



Article

Development of Pharmacophore Model for Indeno[1,2-*b*]indoles as Human Protein Kinase CK2 Inhibitors and Database Mining

Samer Haidar ^{1,2,*}, Zouhair Bouaziz ³, Christelle Marminon ³, Tuomo Laitinen ⁴, Antti Poso ^{4,5}, Marc Le Borgne ³ and Joachim Jose ¹

¹ Institut für Pharmazeutische und Medizinische Chemie, PharmaCampus, Westfälische Wilhelms-Universität Münster, Corrensstr. 48, 48149 Münster, Germany; joachim.jose@uni-muenster.de

² Faculty of Pharmacy, Damascus University, Damascus, P.O. Box 9411, Syria

³ Université de Lyon, Université Claude Bernard Lyon 1, Faculté de Pharmacie—ISPB, EA 4446 Bioactive Molecules and Medicinal Chemistry, SFR Santé Lyon-Est CNRS UMS3453—INSERM US7, 8 Avenue Rockefeller, F-69373 Lyon CEDEX 8, France; zouhair.bouaziz@univ-lyon1.fr (Z.B.); christelle.marminon-davoust@univ-lyon1.fr (C.M.); marc.le-borgne@univ-lyon1.fr (M.L.B.)

⁴ School of Pharmacy, Faculty of Health Sciences, University of Eastern, 70211 Kuopio, Finland; tuomo.laitinen@uef.fi (T.L.); antti.poso@uef.fi (A.P.)

⁵ University Hospital Tübingen, Department of Internal Medicine VIII, Otfried-Müller-Straße 10, 72076 Tübingen, Germany

* Correspondence: shaid_01@uni-muenster.de; Tel.: +49-0-251-833-3154

Academic Editor: Lorenzo A. Pinna

Received: 13 December 2016; Accepted: 4 January 2017; Published: 9 January 2017

Abstract: Protein kinase CK2, initially designated as casein kinase 2, is an ubiquitously expressed serine/threonine kinase. This enzyme, implicated in many cellular processes, is highly expressed and active in many tumor cells. A large number of compounds has been developed as inhibitors comprising different backbones. Beside others, structures with an indeno[1,2-*b*]indole scaffold turned out to be potent new leads. With the aim of developing new inhibitors of human protein kinase CK2, we report here on the generation of common feature pharmacophore model to further explain the binding requirements for human CK2 inhibitors. Nine common chemical features of indeno[1,2-*b*]indole-type CK2 inhibitors were determined using MOE software (Chemical Computing Group, Montreal, Canada). This pharmacophore model was used for database mining with the aim to identify novel scaffolds for developing new potent and selective CK2 inhibitors. Using this strategy several structures were selected by searching inside the ZINC compound database. One of the selected compounds was bikaverin (6,11-dihydroxy-3,8-dimethoxy-1-methylbenzo[*b*]xanthene-7,10,12-trione), a natural compound which is produced by several kinds of fungi. This compound was tested on human recombinant CK2 and turned out to be an active inhibitor with an IC₅₀ value of 1.24 μM.

Keywords: CK2; cancer; indeno[1,2-*b*]indoles; pharmacophore; MOE; ZINC database

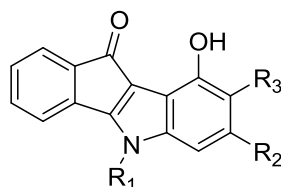
1. Introduction

Cancer remains the leading cause of death in the world and around eight million deaths related to cancer were reported worldwide in 2012. The cancer cases are expected to increase sharply within the coming twenty years [1]. Different strategies for the treatment of cancer, including kinase inhibition [2] were employed and investigated to cure the disease or prolong life and increase its quality [3]. The first known protein kinase inhibitor was developed in the early 80s, and since then a large number of compounds has been described (for reviews see [3,4]). The first protein kinase

Table 1. Cont.

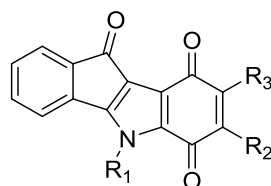
Code	R ₁	R ₂	R ₂ '	R ₃	R ₃ '	R ₄	R ₅	IC ₅₀ (μM)
32	CH(CH ₃) ₂	H	H	H	H	H	O-CH ₂ CH=C(CH ₃) ₂	>10
37	CH(CH ₃) ₂	(<i>para</i> -F)Ph	H	H	H	H	H	>10
39	CH(CH ₃) ₂	furan-2-yl	H	H	H	H	H	>10
40	CH ₂ Ph	H	H	H	H	H	H	>10
41	CH ₂ CH ₂ Ph	Ph	H	H	H	H	H	>10
43	H	CH ₃	H	COOCH ₃	H	H	H	>10
44	H	H	H	H	H	H	H	>10
45	CH ₂ Ph	CH ₃	H	COOCH ₃	H	H	H	>10
46	CH(CH ₃) ₂	H	H	CH(CH ₃) ₂	H	H	H	>10
47	CH ₂ Ph	CH ₃	CH ₃	H	H	H	H	>10
48	CH ₂ Ph	CH ₃	H	H	H	H	H	>10
49	CH(CH ₃) ₂	Ph	H	H	H	H	H	>10
50	CH ₂ Ph	Ph	H	H	H	H	H	>10

Table 2. Structures of the phenolic indeno[1,2-*b*]indoles and their IC₅₀ values towards CK2, which were used for the training and test sets, data from Hundsdorfer et al. [10], and Gozzi et al. [12].



Code	R ₁	R ₂	R ₃	IC ₅₀ (μM)
6	CH(CH ₃) ₂	CH ₃	H	1.27
7	CH ₂ CH ₂ (<i>ortho</i> -OMe)Ph	H	H	1.30
10	CH(CH ₃) ₂	CH(CH ₃) ₂	H	1.65
12	CH(CH ₃) ₂	H	H	2.00
15	CH(CH ₃) ₂	(<i>para</i> -F)Ph	H	2.77
16	CH(CH ₃) ₂	furan-2-yl	H	3.63
25	CH ₂ CH ₂ C ₆ H ₅	H	H	7.50
27	CH ₂ Ph	Ph	H	>10
30	CH ₂ CH ₂ C ₆ H ₅	CH ₃	H	>10
33	CH(CH ₃) ₂	H	CH ₃	>10
38	CH(CH ₃) ₂	H	CH(CH ₃) ₂	>10
42	CH ₂ Ph	H	H	>10

Table 3. Structures of the quinonic indeno[1,2-*b*]indoles and their IC₅₀ values towards CK2, which were used for the training and test sets, data from Alchab et al. [9], Gozzi et al. [12].



Code	R ₁	R ₂	R ₃	IC ₅₀ (μM)
4	CH(CH ₃) ₂	CH ₃	H	0.43
11	CH(CH ₃) ₂	furan-2-yl	H	1.65
13	CH ₂ C ₆ H ₅	H	H	2.20
17	CH ₂ CH ₂ C ₆ H ₅	CH ₃	H	4.10
19	CH(CH ₃) ₂	CH(CH ₃) ₂	H	4.76
20	CH(CH ₃) ₂	H	CH ₃	4.90
21	CH(CH ₃) ₂	H	H	5.50
31	CH(CH ₃) ₂	H	CH(CH ₃) ₂	>10
34	CH(CH ₃) ₂	(<i>para</i> -F)Ph	H	>10
35	CH(CH ₃) ₂	Ph	H	>10
36	CH ₂ CH ₂ Ph	H	H	>10

MOE software (Chemical Computing Group, Montreal, Canada) package was used to perform this study [21]. MOE has been proved to be an effective tool for pharmacophore construction [22], other alternative software in this field might be Catalyst, LigandScout, and Phase, which are also effective for pharmacophore modeling. The resulting test set contained 524 conformations of these 50 compounds. Inhibitors with IC_{50} values of less than 10 μ M were considered as moderate or highly active compounds. All others were designated as none active. This filter resulted in a number of 26 active and 24 non active compounds.

The pharmacophore model was developed by aligning the structures of the five most active compounds (training set), which were very well aligned as it is clear in Figure 1 were the backbones of the compounds fits very well above each other due to structure similarity.

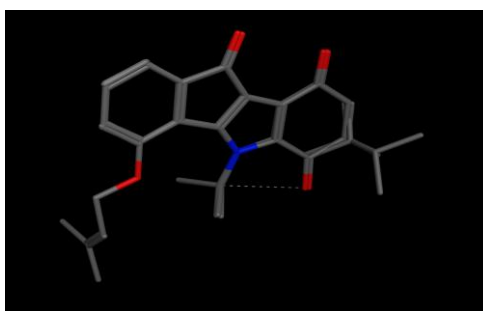


Figure 1. Alignment of compounds 1–5 from the training set of indeno [1,2-*b*]indole inhibitors of CK2, carbon atoms are in gray, oxygen atoms are in red, nitrogen atom in blue and intermolecular H-bond in dots.

The pharmacophore model derived thereof is shown in Figure 2. It is described by nine necessary features. In particular, a π ring center on the B ring, a hydrophobic centroid, two aromatic center/hydrophobic atoms on ring A and C, a π ring center/aromatic/hydrophobic centroid on ring D, and two hydrogen bond acceptors on rings B and D, together with two hydrogen acceptor projections, beside one excluded volume (no matching atom can be inside). Validity of the pharmacophore model was analyzed by its ability to identify the medium and highly active compounds only, which are represented by compounds 1–26. It turned out that with this pharmacophore model it was possible to identify 22 out of the 26 designated as active compounds, which represents 85% of all. Compounds 9, 13, 17, and 20 were not identified. Only four compounds out of the 24 non active compounds were selected and hence identified as false positive, which represents 17% of the non-active compounds. The compounds that were selected as false positives were compounds 29, 31, 36, and 40.

The nine features of this model as described were used to search in part of the ZINC database “All Now” (all purchasable in 2 weeks), with the aim of identifying an active CK2 inhibitor. However, by applying all the nine features of the developed pharmacophore model, it was not possible to identify any compound from the selected database. For that reason, the search was repeated using only eight out of nine features together with the excluding volume. The best result obtained was by omitting F2 (this feature is outside the main backbone of the indeno[1,2-*b*]indoles) and keeping all other features, which resulted in the selection of 57 compounds. The 57 compounds selected belong to different chemical backbones such as naphtho[2,3-*b*]furanedione, quino[2,3-*b*]acridinetetrone, naphthacenedione, and pyrazoloquinazoline. From this set of compounds, only two pyrrolizine based compounds were excluded from further observations, due to their inappropriate structure for enzyme inhibitors. They are rather fragment-like compounds according to “the role of three” filters ($MW \leq 300$, $cLogP \leq 3$, number of H-bond donors ≤ 3 , number of H-bond acceptors ≤ 3) [23], which can be misleading for the development of active and selective inhibitors. The structures of the 55 selected compounds are shown in Supplementary Table S1. Surprisingly none of the selected compounds belonged to the indeno[1,2-*b*]indole group of compounds. As a control, the ZINC database

was searched on the presence of indeno[1,2-*b*]indole like compounds and—to our surprise—it did not contain any.

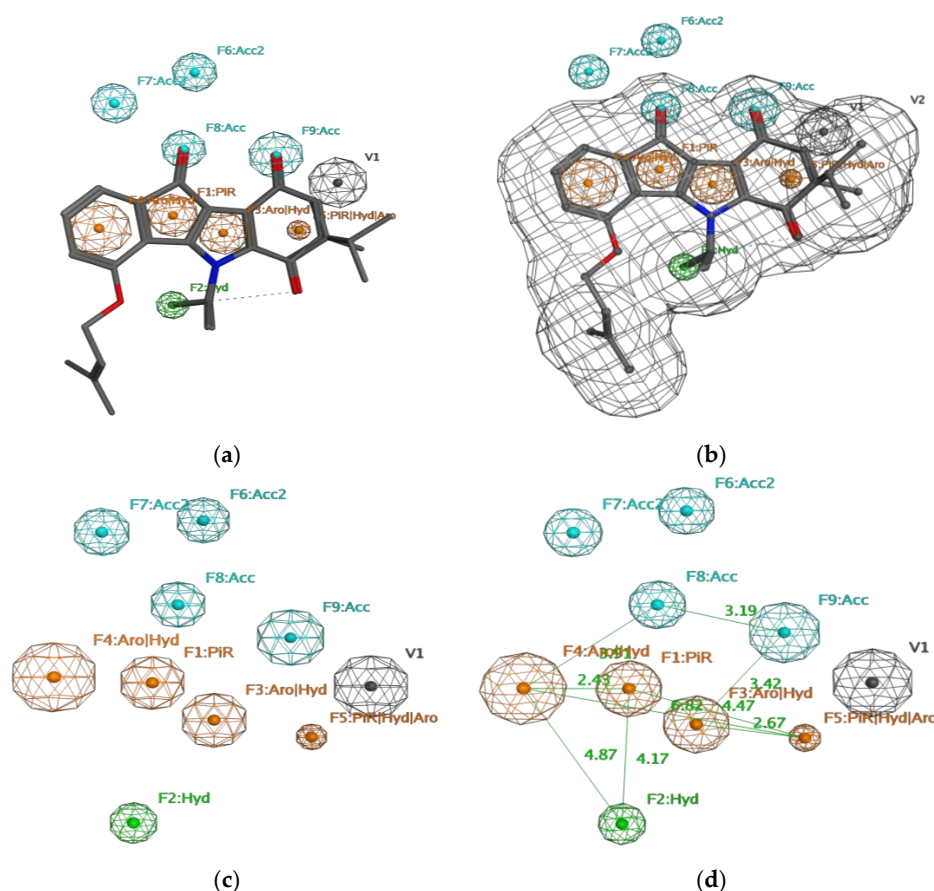


Figure 2. The developed pharmacophore model. (a) Alignment of common feature pharmacophore model with training set; (b) Alignment of common feature pharmacophore model with training set with occupied volume; (c) Common feature pharmacophore model of indeno[1,2-*b*]indole-type CK2 inhibitors; (d) Common feature pharmacophore model with the distance constraints. **Acc**: H-bond acceptor, **Acc 2**: H-bond acceptor projection, **Aro**: Aromatic center, **Hyd**: Hydrophobic centroid, **PiR**: π ring center.

In order to select the best candidates among the hit compounds, docking studies of the selected compounds against the ATP active site of the CK2 kinase were performed. A conformational search for the 55 selected compounds was carried out by MOE and all the resulting 777 conformations were used for the docking study. The conformations of all structures were docked in human CK2 enzyme using the MOE. For this purpose, the 3D X-ray crystal structure of the catalytic subunit of protein kinase CK2 (PDB ID: 3C13, resolution 1.95 Å [24]) was used. All conformations were sorted according to S score (energy-based scoring method implemented in MOE) to rank the best ligand in terms of orientation and binding to the active site, the top three ranking conformations with the minimum S score were selected after visual 2D inspection. Visual 2D inspection is a common additional tool in order to exclude “false positives due to assumptions and shortcomings in docking methods and scoring function” [25], where the active site is analyzed to determine protein-ligand interaction and show exactly which atoms have tether restraints [21]. It is important to note that scoring function values might not always correlated with biological activity. Compound ZINC35643753 was ranked as a top pose followed by compound ZINC44136135 and ZINC05765165 (bikaverin) with S scores of -24.0 , -23.5 , and -21.1 , respectively. Beside the minimum S score, each pose for each compound was

analyzed to find hydrogen binding and π - π interactions. 2D interactions between receptor and ligands for the three top ranked compounds were shown in Figure 3. The three best compounds fit well in the ATP binding site as it is shown in Figure 4.

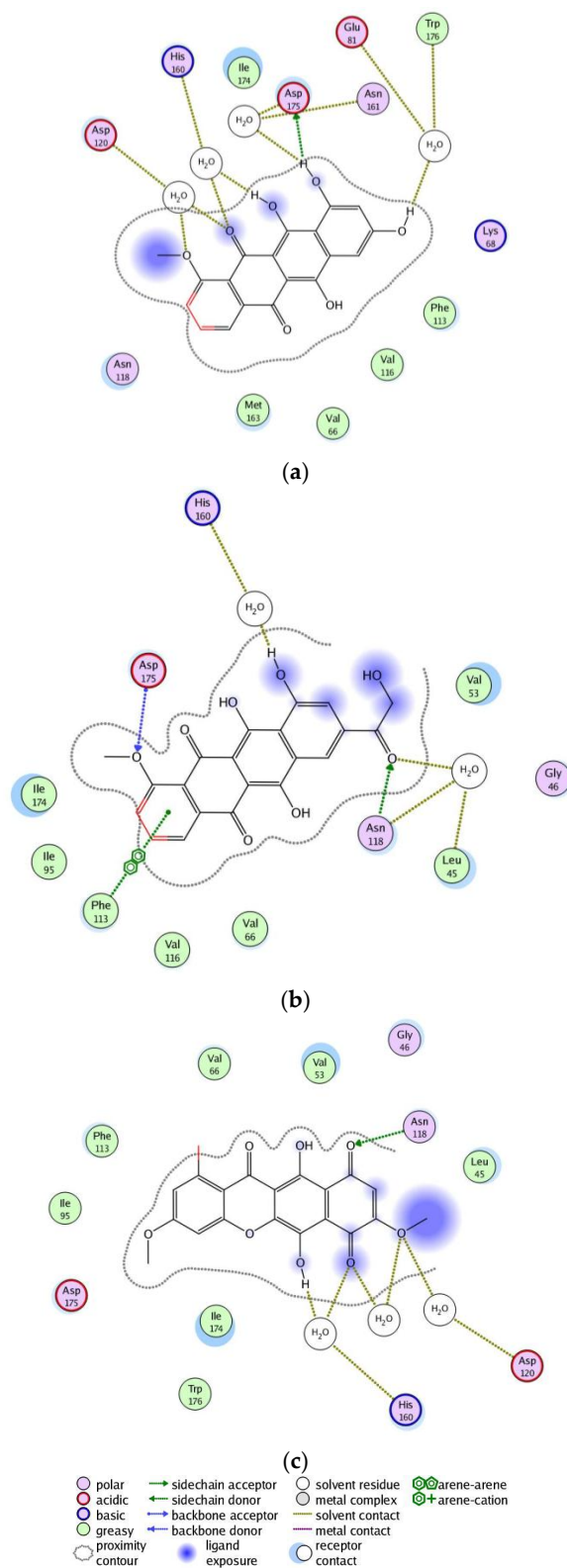


Figure 3. 2-D interactions between the three best selected compounds and the ATP binding site. (a) ZINC35643753; (b) ZINC44136135; (c) ZINC05765165.

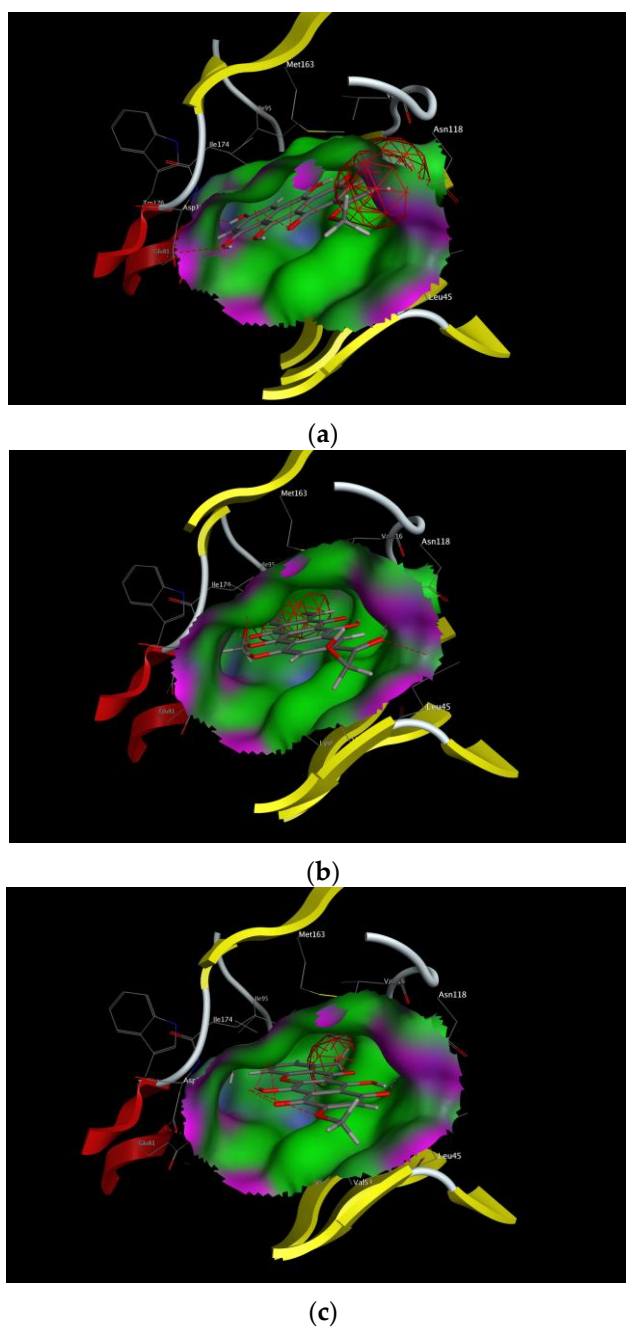


Figure 4. Binding mode of the selected ligands with the binding site of CK2. (a) ZINC35643753; (b) ZINC44136135; (c) ZINC05765165.

According to MOE docking, ZINC35643753 has direct bonding to Asp175, beside indirect bonding with His160, Asp120, Trp176, Glu81 and Asn161 via water molecules, Figure 3a, while ZINC44136135 shows direct interaction with Asp195 and Asn118, and arene-arene interaction with Phe113, as well as two indirect bonding with Leu45 and Asn118, via water molecules (Figure 3b). ZINC05765165 has interaction via hydrogen bonding with Asn118, as well as two indirect interactions with His160 and Asp120 via water molecules (Figure 3c). From the docking poses of the best selected compounds, it is clear that that docking strongly proposes the interaction between some functional groups of the compounds and some amino acid residues from the enzyme, and this is in line with known ATP kinase inhibitors. It might indicate that the compounds fit well in the ATP binding site of the enzyme.

Compound ZINC35643753 and compound ZINC44136135 are commercially available compounds as all compounds included in the ZINC database, both are anthracycline analogues. This group of compounds is among the most effective drugs used in chemotherapy for treatment of both solid tumors and leukemia in adults and children. Nevertheless those compounds suffer from several severe adverse effects, especially cardiotoxicity [26]. From the three compounds identified by ZINC database mining only bikaverin (6,11-dihydroxy-3,8-dimethoxy-1-methylbenzo[*b*]xanthene-7,10,12-trione, Figure 5) was chosen for further experiments. Compound ZINC35643753 and compound ZINC44136135 belong to a group of drugs known to have severe toxicities as it is mention above, while bikaverin is a natural compound with different biological activities. The fact that bikaverin is a natural compound with antitumor activity encourage us to investigate whether this activity might be related to CK2 inhibitory activity [27].

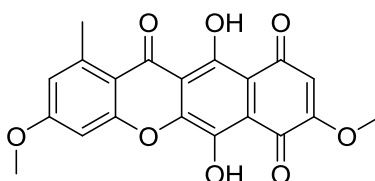


Figure 5. The chemical structure of bikaverin (6,11-dihydroxy-3,8-dimethoxy-1-methylbenzo[*b*]xanthene-7,10,12-trione), first isolated from the culture of *Fusarium vasinfectum* [28].

Bikaverin was tested on inhibition with purified human protein kinase CK2 expressed in *E. coli* as described before [29]. For this purpose eight concentrations ranging from 0.001 μM to 100 μM of bikaverin were used in a capillary electrophoresis (CE)-based activity assay [30] in comparison the enzyme without inhibitor. The obtained dose-response curve is shown in Figure 6, and was used to determine the IC_{50} value of bikaverin, which turned out to be 1.24 μM . The IC_{50} value was determined in three independent biological replicates with basically similar results (1.29, 1.30 and 1.12 μM) the mean value was determined. It is important to note that all attempts to achieve 100% inhibition were not successful. This was not due to limited solubility of the compound. As it is shown in Figure 6, maximum activity with the highest concentration of bikaverin was 80%, and the relative IC_{50} value was 0.78 μM .

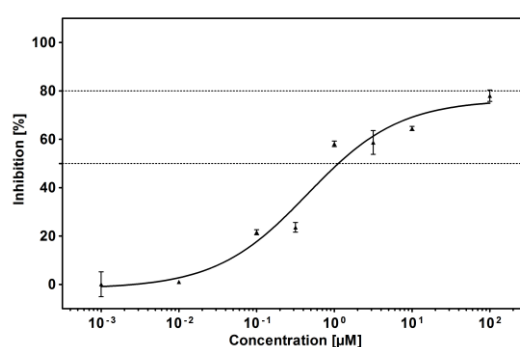


Figure 6. Determination of the IC_{50} value towards recombinant human CK2 of bikaverin (6,11-dihydroxy-3,8-dimethoxy-1-methylbenzo[*b*]xanthene-7,10,12-trione), the hit compound identified by ZINC database mining. CK2 holoenzyme was pre-incubated with different bikaverin concentrations (0.001–100 μM) and subsequently the in vitro phosphorylation of CK2 specific substrate peptide was determined by CE [30]. Relative CK2 activity at each inhibitor concentration is given in a dose-response diagram. IC_{50} values were determined in three independent replications and mean values with corresponding standard deviations are given.

3. Discussion

In this study a pharmacophore model for ATP-competitive inhibitors of human protein kinase CK2 was developed on the basis of known inhibitors with an indeno[1,2-*b*]indole scaffold. This model has been challenged against a set of compounds and was able to select most active compounds and excluded most nonactive ones, which indicate its validity. By using this model for database mining using the ZINC compound database, bikaverin ZINC05765165 was identified as a hit. By testing this natural compound with recombinant human CK2 it turned out to have an IC₅₀ value of 1.24 μM. Bikaverin, also known as lycopersin [31], is a reddish pigment produced by different fungal species. Chemically it is a polyketide with a tetracyclic benzoxanthone structure. It has been reported to possess diverse biological activities e.g., to have antibiotic, antifungal and anticancer properties [27]. Although the antitumoral activity of bikaverin has been reported, only few reports are focusing on its mode of action and up to now, no inhibition of CK2, as a possible target, was investigated. For these reasons we chose it for in vitro inhibition determination. Our in vitro test for this compound proved that it is active and can clearly inhibit the CK2, which is an evidence of the validity for the developed pharmacophore model.

In further studies bikaverin could be used for structural modification in order to improve its inhibitory towards CK2. Further studies are necessary to test the effects of some derivatives of this compound such as acetylated derivatives or dibromo-*O*-methylbikaverin, as those compounds were more cytotoxic than bikaverin in cell lines such as EAC cells [27,32]. Also further studies to test other selected structures from the 55 compounds and modify them accordingly is planned with the hope of finding new highly active and selective inhibitor of CK2. Actually, the aim of this study was to primarily in silico filter the database and try to introduce new backbones serving as possible new hits for human CK2 which was performed by discovering that bikaverin is an active CK2 inhibitor with inhibitory activity comparable to other natural inhibitors of the target enzyme such as emodin which has an IC₅₀ value of 0.58 μM in our test system.

4. Materials and Methods

4.1. The Chemical Compounds

All compounds used in this study except bikaverin were described by us recently. The synthesis procedures to access to our target indeno[1,2-*b*]indoles have been published previously [9,10,12,13], bikaverin was purchased from Sigma-Aldrich (Munich, Germany).

4.2. In Vitro Assay

All indeno[1,2-*b*]indoles were tested for their inhibitory activity towards the human CK2 holoenzyme following the procedure described earlier [29]. The synthetic peptide RRRDDDSDDD was used as the substrate, which is reported to be most efficiently phosphorylated by CK2. The purity of the CK2 holoenzyme was superior to 99%. For initial testing, inhibition was determined relative to the controls at inhibitor concentrations of 10 μM in DMSO as a solvent. Therefore, 2 μL of the dissolved inhibitors (stock solution in DMSO) were mixed with 78 μL of CK2-supplemented kinase buffer which was composed of 1 μg CK2 holoenzyme, 50 mM Tris/HCl (pH 7.5), 100 mM NaCl, 10 mM MgCl₂ and 1 mM DTT. The reaction was started by the addition of 120 μL assay buffer, which was composed of 25 mM Tris/HCl (pH 8.5), 150 mM NaCl, 5 mM MgCl₂, 1 mM DTT, 100 μM ATP and 0.19 mM of the substrate peptide RRRDDDSDDD. The reaction was carried out for 15 minutes at 37 °C and stopped by the addition of 4 μL EDTA (0.5 M). Subsequently the reaction mixture was analyzed by a PA800 capillary electrophoresis from Beckman Coulter (Krefeld, Germany). Acetic acid (2 M, adjusted with conc. HCl to a pH of 2.0) was used as the electrolyte for electrophoretic separation. The separated substrate and product peptide were detected at 214 nm using a DAD-detector. Pure solvent was used as negative control (0% inhibition), assays without the enzyme were used as positive control (100% inhibition). Compounds with at least 50% inhibition at 10 μM were used for IC₅₀ determinations.

For the determination of IC_{50} , inhibition was determined using nine inhibitor concentrations ranging from 0.001 μM to 100 μM . IC_{50} were calculated from the resulting dose-response curves [30].

4.3. Computational Methods

4.3.1. Pharmacophore Generation

Molecular Operating Environment software package (MOE, Chemical Computing Group, Montreal, QC, Canada) was used to perform this study [21] running on an Intel Core, Duo based, 2.26 GHz processor. The molecular structures of the inhibitors were built with MOE and energy was minimized in the MMFF94x force field as implemented in the software. In order to develop a reliable pharmacophore model to identify new CK2 inhibitors, a database of known indeno[1,2-*b*]indole inhibitors was created. The structures of the inhibitors together with their inhibitory activity were published by us as mentioned above. In total this data base contained 50 compounds (Tables 1–3). The pharmacophore model was developed by aligning the minimized structures of the five most active compounds in the database namely compounds 1–5 with IC_{50} values of 25, 170, 360, 430, and 610 nM, respectively (training set). This alignment was obtained using MOE's flexible alignment and all conformations of the molecules were considered for the alignment [21]. Due to the relatively identical backbones of the compounds, the selected compounds were very well aligned (Figure 1). A conformational search was performed for each of the 50 compounds using the MMFF94x force field within the MOE to generate a multi-conformer database (test set). The search was performed using the default settings of MOE, and a query was developed based on the alignment of the five most active compounds (training set). The Consensus query of MOE was used to create all necessary features of the hypothetical pharmacophore model, tolerance was set at 1 and threshold was set at 80%. In order to optimize this multi features model, each individual pharmacophore feature was removed and the test set was scanned using the remaining features. Nine features were necessary as mentioned earlier (Figure 2), one Pi ring center on the B ring, one hydrophobic centroid, two aromatic center/hydrophobic atoms on ring A and C, one Pi ring center/aromatic/hydrophobic centroid on ring D, and two hydrogen bond acceptors on rings B and D, together with two hydrogen acceptor projections, beside one excluded volume. The radius of F1 and F3 were set at 0.8 \AA , F2 was set at 0.6 \AA , F4, F9 were set on 1 \AA , F5 was set on 0.4 \AA , F6 was set on 0.5 \AA , F7 and F8 were set on 0.7 \AA , and V1 was set on 1 \AA (Figure 2). The pharmacophore search function of MOE was used to scan the test set using all default options of MOE.

4.3.2. Database Search

ZINC Database is a free database of commercially available compounds for virtual screening. It contains over 35 million purchasable compounds in ready-to-dock, 3D formats. ZINC is provided by Department of Pharmaceutical Chemistry at the University of California, San Francisco [20]. The compounds in the ZINC Database are organized in several categories namely, Standard: for delivery within 10 weeks, including in-stock and make on demand compounds; Clean: where stricter filtering rules have been applied, in stock: for immediate delivery; and Boutique: expensive selection of compounds not included in the former categories, and each of these categories is also redivided into Lead-like, Fragment-like, Drug-like and All. Since we are trying to find an active structure which can be directly purchasable, we chose in this work the "All Now" (all purchasable in 2 weeks) database which contains around 13 million compounds and was used to search for compounds that fit to most features of the developed pharmacophore. The compounds from the ZINC database were downloaded into MOE then used for the screening. The selected list of compounds from the database was docked against CK2 enzyme using the MOE software package.

4.3.3. Receptor Refinement

Three dimensional 3D structure of the CK2 complex with emodin was obtained from the Protein Data Bank (PDB) using PDB ID: (3C13) having a resolution of 1.95 Å. The structure was optimized by adding hydrogen atoms using the MOE software [21]. Then water molecules were removed from the structure and 3D protonation was done to change the state into ionization level. In the second step, energy minimization was performed using defaults parameters, where the force field was MMFF94x.

4.3.4. Database Generation

The selected compounds from the database were rebuilt with MOE building option implemented in the software. The compounds were optimized by adding hydrogen atoms using the option of MOE software. Energy of the compounds was minimized using the following parameters gradient: 0.05, Force Field: MMFF94X, Chiral constraint and Current Geometry. The conformation methodology was used to develop low energy conformations for each compound, applying the LowModMD method with RMS gradient of 0.05, all other parameters were used as default. All of the compounds and their conformations were saved in mdb database and later employed for docking studies.

4.3.5. Molecular Docking

The docking of the selected compounds from the database (compounds 1–55) into the active site of CK2 enzyme (3C13) was achieved using MOE-Dock implemented on MOE. The docking parameters were set as Rescoring 1: London dG, Placement: triangle matcher, Retain 30, Refinement Force field, and Rescoring 2: London dG. Docking part of MOE can give correct conformation of the ligand to obtain minimum energy structure. The top conformation for each compound was selected based on the S score and visual inspection was carried out by Lgplot implemented in MOE. Compounds showing significant interaction with the residues of binding pocket of CK2 were picked as promising hits. Prior to dock, the initial ligand from the complex structure was extracted. For the scoring function, lower scores indicate more favorable poses. The unit for the scoring function is Kal/mol, and the S score refers to the final score, which is the score of the last stage that was not set to None. The Lig X function in MOE was used for conducting interactive ligand modification and energy minimization in the active site of the receptor.

5. Conclusions

In this study we were able to valorize the library of indeno[1,2-*b*]indoles designed for CK2 inhibition to determine the necessary ligand binding requirement for ATP binding CK2 inhibitors. We were also able to use the new model for searching in ZINC database. We discovered a potential inhibitor of CK2 and we experimentally confirmed its potency to inhibit CK2. Bikaverin can be regarded as a hit scaffold for designing CK2 inhibitors. It is also possible to use the pharmacophore model to further identify new inhibitors for the target enzyme from other databases, and modify the selected structures accordingly. Finally discovering that bikaverin is a CK2 inhibitor is an important finding and provides an important contribution toward finding active and selective CK2 inhibitors.

Supplementary Materials: The following is available online at <http://www.mdpi.com/1424-8247/10/1/8/s1>, Table S1.

Author Contributions: S.H. designed the virtual screening study, conducted most of the experiments, analyzed the data and wrote most parts of the manuscript. M.L.B., B.Z. and C.M. provided the compounds for the study, draw structures of compounds and critically read the manuscript, T.L. and A.P. helped with pharmacophore modeling, analyzed the data and critically read the manuscript, J.J. coordinated the project and wrote part of the manuscript.

Conflicts of Interest: The authors declare no conflict of interest.

References

1. WHO: Cancer Fact Sheet N°297. Available online: <http://www.who.int/mediacentre/factsheets/fs297/en/> (accessed on 4 January 2017).
2. Ahmad, K.A.; Wang, G.; Slaton, J.; Unger, G.; Ahmed, K. Targeting CK2 for cancer therapy. *Anticancer Drugs* **2005**, *16*, 1037–1043. [[CrossRef](#)] [[PubMed](#)]
3. Cozza, G.; Pinna, L.A. Casein kinases as potential therapeutic targets. *Expert Opin. Ther. Targets* **2016**, *20*, 319–340. [[CrossRef](#)] [[PubMed](#)]
4. Cozza, G.; Pinna, L.A.; Moro, S. Protein kinase CK2 inhibitors: A patent review. *Expert Opin. Ther. Pat.* **2012**, *22*, 1081–1097. [[CrossRef](#)] [[PubMed](#)]
5. Druker, B.J.; Sawyers, C.L.; Kantarjian, H.; Resta, D.J.; Reese, S.F.; Ford, J.M.; Capdeville, R.; Talpaz, M. Activity of a specific inhibitor of the BCR-ABL tyrosine kinase in the blast crisis of chronic myeloid leukemia and acute lymphoblastic leukemia with the philadelphia chromosome. *N. Engl. J. Med.* **2001**, *344*, 1038–1042. [[CrossRef](#)] [[PubMed](#)]
6. Fabbro, D.; Cowan-Jacob, S.W.; Mobitz, H.; Martiny-Baron, G. Targeting cancer with small-molecular-weight kinase inhibitors. *Methods Mol. Biol.* **2012**, *795*, 1–34. [[PubMed](#)]
7. Faust, R.A.; Gapany, M.; Tristani, P.; Davis, A.; Adams, G.L.; Ahmed, K. Elevated protein kinase CK2 activity in chromatin of head and neck tumors: Association with malignant transformation. *Cancer Lett.* **1996**, *101*, 31–35. [[CrossRef](#)]
8. Rongved, P.; Kirsch, G.; Bouaziz, Z.; Jose, J.; le Borgne, M. Indenoindoles and cyclopentacarbazoles as bioactive compounds: Synthesis and biological applications. *Eur. J. Med. Chem.* **2013**, *69*, 465–479. [[CrossRef](#)] [[PubMed](#)]
9. Alchab, F.; Ettouati, L.; Bouaziz, Z.; Bollacke, A.; Delcros, J.G.; Gertzen, C.G.; Gohlke, H.; Pinaud, N.; Marchivie, M.; Guillon, J.; et al. Synthesis, biological evaluation and molecular modeling of substituted indeno[1,2-*b*]indoles as inhibitors of human protein kinase CK2. *Pharmaceuticals* **2015**, *8*, 279–302. [[CrossRef](#)] [[PubMed](#)]
10. Hundsdorfer, C.; Hemmerling, H.J.; Gotz, C.; Totzke, F.; Bednarski, P.; Le Borgne, M.; Jose, J. Indeno[1,2-*b*]indole derivatives as a novel class of potent human protein kinase CK2 inhibitors. *Bioorg. Med. Chem.* **2012**, *20*, 2282–2289. [[CrossRef](#)] [[PubMed](#)]
11. Hundsdorfer, C.; Hemmerling, H.J.; Hamberger, J.; le Borgne, M.; Bednarski, P.; Gotz, C.; Totzke, F.; Jose, J. Novel indeno[1,2-*b*]indoloquinones as inhibitors of the human protein kinase CK2 with antiproliferative activity towards a broad panel of cancer cell lines. *Biochem. Biophys. Res. Commun.* **2012**, *424*, 71–75. [[CrossRef](#)] [[PubMed](#)]
12. Gozzi, G.J.; Bouaziz, Z.; Winter, E.; Daflon-Yunes, N.; Honorat, M.; Guragossian, N.; Marminon, C.; Valdameri, G.; Bollacke, A.; Guillon, J.; et al. Phenolic indeno[1,2-*b*]indoles as ABCG2-selective potent and non-toxic inhibitors stimulating basal atpase activity. *Drug Des. Dev. Ther.* **2015**, *9*, 3481–3495.
13. Jabor Gozzi, G.; Bouaziz, Z.; Winter, E.; Daflon-Yunes, N.; Aichele, D.; Nacereddine, A.; Marminon, C.; Valdameri, G.; Zeinyeh, W.; Bollacke, A.; et al. Converting potent indeno[1,2-*b*]indole inhibitors of protein kinase CK2 into selective inhibitors of the breast cancer resistance protein ABCG2. *J. Med. Chem.* **2015**, *58*, 265–277. [[CrossRef](#)] [[PubMed](#)]
14. Tuccinardi, T.; Poli, G.; Corchia, I.; Granchi, C.; Lapillo, M.; Macchia, M.; Minutolo, F.; Ortore, G.; Martinelli, A. A virtual screening study for lactate dehydrogenase 5 inhibitors by using a pharmacophore-based approach. *Mol. Inform.* **2016**, *35*, 434–439. [[CrossRef](#)] [[PubMed](#)]
15. Patel, P.; Singh, A.; Patel, V.; Jain, D.K.; Veerasamy, R.; Rajak, H. Pharmacophore based 3D-qsar, virtual screening and docking studies on novel series of HDAC inhibitors with thiophen linker as anticancer agents. *Comb. Chem. High Throughput Screen.* **2016**, *1*, 1. [[CrossRef](#)]
16. Meetei, P.A.; Rathore, R.S.; Prabhu, N.P.; Vindal, V. In silico screening for identification of novel β -1,3-glucan synthase inhibitors using pharmacophore and 3D-QSAR methodologies. *Springerplus* **2016**, *5*, 965. [[CrossRef](#)] [[PubMed](#)]
17. Berinyuy, E.; Soliman, M.E. Identification of novel potential GP120 of HIV-1 antagonist using per-residue energy contribution-based pharmacophore modelling. *Interdiscip. Sci.* **2016**, *10*. [[CrossRef](#)] [[PubMed](#)]

18. Ugale, V.G.; Bari, S.B. Identification of potential GLY/NMDA receptor antagonists by cheminformatics approach: A combination of pharmacophore modelling, virtual screening and molecular docking studies. *SAR QSAR Environ. Res.* **2016**, *27*, 125–145. [[CrossRef](#)] [[PubMed](#)]
19. Cozza, G.; Bonvini, P.; Zorzi, E.; Poletto, G.; Pagano, M.A.; Sarno, S.; Donella-Deana, A.; Zagotto, G.; Rosolen, A.; Pinna, L.A.; et al. Identification of ellagic acid as potent inhibitor of protein kinase CK2: A successful example of a virtual screening application. *J. Med. Chem.* **2006**, *49*, 2363–2366. [[CrossRef](#)] [[PubMed](#)]
20. Irwin, J.J.; Sterling, T.; Mysinger, M.M.; Bolstad, E.S.; Coleman, R.G. Zinc: A free tool to discover chemistry for biology. *J. Chem. Inf. Model.* **2012**, *52*, 1757–1768. [[CrossRef](#)] [[PubMed](#)]
21. Molecular Operating Environment (MOE), C.C.G.I., 1010 Sherbooke St. West, Suite #910, Montreal, QC, Canada, H3A 2R7, 2013. Available online: https://www.chemcomp.com/MOE-Molecular_Operating_Environment.htm (accessed on 4 January 2017).
22. Sanders, M.P.; Barbosa, A.J.; Zarzycka, B.; Nicolaes, G.A.; Klomp, J.P.; de Vlieg, J.; del Rio, A. Comparative analysis of pharmacophore screening tools. *J. Chem. Inf. Model.* **2012**, *52*, 1607–1620. [[CrossRef](#)] [[PubMed](#)]
23. Congreve, M.; Chessari, G.; Tisi, D.; Woodhead, A.J. Recent developments in fragment-based drug discovery. *J. Med. Chem.* **2008**, *51*, 3661–3680. [[CrossRef](#)] [[PubMed](#)]
24. RCSB PDB-3C13: Low pH-Value Crystal Structure of Emodin in Complex with the Catalytic Subunit of Protein Kinase CK2. Available online: <http://www.rcsb.org/pdb/explore/explore.do?structureId=3C13> (accessed on 4 January 2017).
25. Pauli, I.; dos Santos, R.N.; Rostirolla, D.C.; Martinelli, L.K.; Ducati, R.G.; Timmers, L.F.; Basso, L.A.; Santos, D.S.; Guido, R.V.; Andricopulo, A.D.; et al. Discovery of new inhibitors of mycobacterium tuberculosis inhA enzyme using virtual screening and a 3D-pharmacophore-based approach. *J. Chem. Inf. Model.* **2013**, *53*, 2390–2401. [[CrossRef](#)] [[PubMed](#)]
26. Budman, D.R.; Berry, D.A.; Cirrincione, C.T.; Henderson, I.C.; Wood, W.C.; Weiss, R.B.; Ferree, C.R.; Muss, H.B.; Green, M.R.; Norton, L.; et al. Dose and dose intensity as determinants of outcome in the adjuvant treatment of breast cancer. The cancer and leukemia group B. *J. Natl. Cancer Inst.* **1998**, *90*, 1205–1211. [[CrossRef](#)] [[PubMed](#)]
27. Limon, M.C.; Rodriguez-Ortiz, R.; Avalos, J. Bikaverin production and applications. *Appl. Microbiol. Biotechnol.* **2010**, *87*, 21–29. [[CrossRef](#)] [[PubMed](#)]
28. Kreitman, G.; Nord, F.F. Lycopersin, a pigment from fusarium lycopersici. *Arch. Biochem.* **1949**, *21*, 457. [[PubMed](#)]
29. Olgen, S.; Gotz, C.; Jose, J. Synthesis and biological evaluation of 3-(substituted-benzylidene)-1,3-dihydro-indolin derivatives as human protein kinase CK2 and p60(c-SRC) tyrosine kinase inhibitors. *Biol. Pharm. Bull.* **2007**, *30*, 715–718. [[CrossRef](#)] [[PubMed](#)]
30. Gratz, A.; Gotz, C.; Jose, J. A ce-based assay for human protein kinase CK2 activity measurement and inhibitor screening. *Electrophoresis* **2010**, *31*, 634–640. [[CrossRef](#)] [[PubMed](#)]
31. Brase, S.; Encinas, A.; Keck, J.; Nising, C.F. Chemistry and biology of mycotoxins and related fungal metabolites. *Chem. Rev.* **2009**, *109*, 3903–3990. [[CrossRef](#)] [[PubMed](#)]
32. Fuska, J.; Proksa, B.; Fuskova, A. New potential cytotoxic and antitumor substances I. In vitro effect of bikaverin and its derivatives on cells of certain tumors. *Neoplasma* **1975**, *22*, 335–338. [[PubMed](#)]

