



Changes in network centrality of psychopathology symptoms between the COVID-19 outbreak and after peak

Yuanyuan Wang^{1,2} · Zhishan Hu³ · Yi Feng^{4,5} · Amanda Wilson² · Runsen Chen^{1,6,7}

Received: 11 July 2020 / Revised: 2 September 2020 / Accepted: 3 September 2020 / Published online: 14 September 2020
© The Author(s) 2020. This article is published with open access

Abstract

The current study investigated the mechanism and changes in psychopathology symptoms throughout the COVID-19 outbreak and after peak. Two studies were conducted separately in China during outbreak and the after peak stages, with 2540 participants were recruited from February 6 to 16, 2020, and 2543 participants were recruited from April 25 to May 5, 2020. The network models were created to explore the relationship between psychopathology symptoms both within and across anxiety and depression, with anxiety measured by the Generalized Anxiety Disorder-7 and depression measured by the Patient Health Questionnaire-9. Symptom network analysis was conducted to evaluate network and bridge centrality, and the network properties were compared between the outbreak and after peak. Noticeably, psychomotor symptoms such as impaired motor skills, restlessness, and inability to relax exhibited high centrality during the outbreak, which still relatively high but showed substantial remission during after peak stage (in terms of strength, betweenness, or bridge centrality). Meanwhile, symptoms of irritability (strength, betweenness, or bridge centrality) and loss of energy (bridge centrality) played an important role in the network after the peak of the pandemic. This study provides novel insights into the changes in central features during the different COVID-19 stages and highlights motor-related symptoms as bridge symptoms, which could activate the connection between anxiety and depression. The results revealed that restrictions on movement were associated with worsen in psychomotor symptoms, indicating that future psychological interventions should target motor-related symptoms as priority.

These authors contributed equally: Yuanyuan Wang, Zhishan Hu, Yi Feng

Supplementary information The online version of this article (<https://doi.org/10.1038/s41380-020-00881-6>) contains supplementary material, which is available to authorized users.

✉ Runsen Chen
runsen.chen@psych.ox.ac.uk

- ¹ National Clinical Research Center for Mental Disorders, Department of Psychiatry, and China National Technology Institute on Mental Disorders, The Second Xiangya Hospital of Central South University, Changsha 410011 Hunan, China
- ² Division of Psychology, Faculty of Health and Life Sciences, De Montfort University, Leicester, UK
- ³ State Key Laboratory of Cognitive Neuroscience and Learning, Beijing Normal University, Beijing, China
- ⁴ Mental Health Center, Central University of Finance and Economics, Beijing, China
- ⁵ School of Psychology, Beijing Normal University, Beijing, China
- ⁶ Department of Psychiatry, The Affiliated Brain Hospital of Nanjing Medical University, Nanjing, China
- ⁷ Department of Psychiatry, University of Oxford, Oxford, UK

Introduction

The COVID-19 pandemic has caused substantial threats to people's physical health and lives, as well as triggered psychological distresses such as anxiety and depression [1]. Unlike previous infections, worldwide mass media reports have highlighted the unique threat of COVID-19, increasing people's psychological distress and panic [2]. COVID-19 is considered highly contagious and currently there is no targeted medical treatment available, instead reducing exposure to the virus is considered to be the best prevention strategy [2]. However, the negative effects of COVID-19 on mental health could be exacerbated by prevention-related measures, such as social distancing and isolation, resulting in a continued fear and panic toward the virus [3]. Therefore, timely mental health care has been required during this pandemic [4]. In order to provide the general public with appropriate mental health care, researchers have made an urgent call for guidance and practical evidence to inform the creation of both health and psychological interventions [5]. A number of recent studies have focused on mental health

problems during COVID-19, with the most frequently reported symptoms being depression and anxiety aspects [1, 6, 7]. A meta-analysis on the mental health within the general population during the COVID-19 pandemic reported the prevalence of anxiety to be 31.9% (95% CI: 27.5–36.7) and the prevalence of depression as 33.7% (95% CI: 27.5–40.6) [8]. When understanding mental health problems, co-occurrence becomes a complex and principal issue in regards to treatment adherence and engagement in prevention measures [9]. Considerations to better understand co-occurrence during the pandemic are required.

Depression and anxiety are commonly co-occur at high rates, with a co-occurrence of depression and anxiety resulting in more severe and chronic psychopathology [10, 11]. Several theoretical models have been proposed to explain the co-occurrence of anxiety and depression; the diathesis-stress model proposes a simultaneously development of symptoms and left untreated anxiety could increase the risk of depressive disorders and vice versa [12–15]. However, there is no universal agreement to explain the co-occurrence of anxiety and depression. In order to further investigate the relationship between anxiety and depression, the current study applied network analysis.

To interpret the mechanisms of any underlying psychopathology and develop effective interventions, it is essential to characterize the interactions between the two different mental disorders. Network models describe mental disorders using an interacting web of symptoms, which can offer new insight into co-occurrence [9, 16]. According to Network Theory, the symptoms of a mental disorder can lead to development of another disorder; the co-occurrence belongs to a dynamic network of symptoms that cause, sustain, and underlie the symptomology [17, 18]. Bridge symptoms can be regarded as the symptoms that connect two mental health disorders, and the activation of the bridge symptoms increase the risk of symptoms transferring from one disorder to another [9]. Thus, the identification of bridge symptoms between depression and anxiety could provide meaningful clinical implications to prevent co-occurrence. This could be done through applying targeted and prioritized treatment for bridge symptoms to control and prevent activation that can lead to the co-occurring symptoms between depression and anxiety. During the pandemic, there has been a dramatic decreases in individuals' social activities [2]. Considering the preventative measures of quarantine, social distancing, and lockdown, people's mobile-related activities have been largely reduced. It is likely that motor-related symptoms could then be considered bridge symptoms between anxiety and depression.

To understand how symptoms change over time, several studies have focused on psychologically related distresses

during different COVID-19 stages, with a lack of consensus within the studies' results. In a recent longitudinal study on mental health during COVID-19, no significant changes in anxiety and depression were found in the general Chinese population between the initial outbreak and the after peak period [6]. On the other hand, Qiu et al. [1] conducted a national survey among Chinese individuals and found that the distress caused by COVID-19 decreased significantly over time among the general public. However, the existing studies did not investigate the mechanism and changes in anxiety and depressive symptoms throughout the COVID-19 outbreak and the after peak using network analysis. A recently developed symptom network perspective has highlighted the importance of not only measuring whether symptoms have changed but measuring the interactions between individual symptoms [19–21]. Using network analysis may then provide a more in-depth understanding on the dynamic changes between symptoms of depression and anxiety at different points throughout the pandemic. The researchers aimed to assess the interactions between anxiety and depressive symptom over the outbreak and peak of COVID-19, and to identify the bridge symptoms (i.e., depressive symptoms with strong associations with anxiety symptoms) using network analysis. Considering the COVID-19-related prevention measures of social distancing and isolation, we hypothesized that motor-related symptoms would be the bridge symptoms between depression and anxiety.

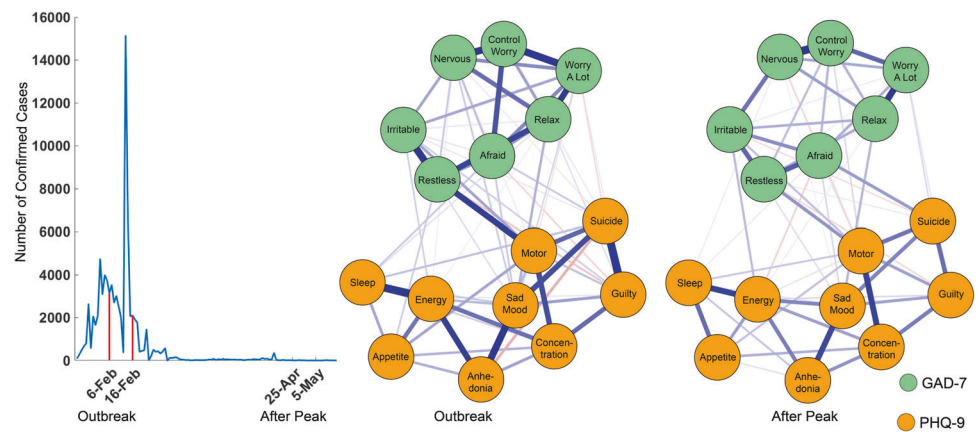
Materials and methods

Study sample

The current survey included a total of 5274 Chinese participants who completed a surveyed via “Wenjuanxing,” a Chinese online platform providing functions equivalent to Qualtrics. The location was verified by participants' cell-phone GPS trackers. To avoid duplication of data, each IP address was only granted access once to complete the questionnaire.

Detailed data collection information, inclusion and exclusion criteria, and demographic information are described in Supplementary information. A total of 5083 participants were included in the analysis. Specifically, 2540 participants (mean age = 25.28 ± 8.07 , education years = 15.93 ± 1.82) were surveyed during the outbreak stage from February 6 to 16, 2020 (Fig. 1). And, 2543 participants (mean age = 22.03 ± 6.30 , education years = 15.97 ± 1.26) were surveyed during the after peak stage. The study was approved by the ethics committee of Central University of Finance and Economics and The Second Xiangya Hospital of Central South University.

Fig. 1 Symptom network at outbreak and after peak stages. The line chart illustrates the data collection periods and the daily confirmed new cases in mainland China. The green nodes denote the GAD-7 items and the orange nodes denote the PHQ-9 items. Meanwhile, the blue edges denote the positive correlations and the red edges denote the negative correlations.



Assessment of psychopathology symptoms

The Patient Health Questionnaire-9 (PHQ-9)

Depression symptoms were assessed via the nine-item PHQ-9 [22]. The items of PHQ-9 and their reference names are listed in Table S1. The scales for the questionnaire are in a four-point Likert format where participants evaluate their symptoms on a scale from 0 (not at all) to 3 (nearly every day), with higher scores indicating severe symptoms. The validated Chinese version uses a cutoff score of 5 to determine whether a participant had mild depression symptoms, and the same cutoff score was used for this study [22–24]. The Cronbach's alpha was 0.915.

The Generalized Anxiety Disorder Scale (GAD-7)

Anxiety symptoms were assessed using the seven-item GAD-7 Scale [25]. The items of GAD-7 and their reference names are listed in Table S1. The scales consist of a four-point Likert format, in which participants evaluate their symptoms on a scale from 0 (not at all) to 3 (nearly every day), with higher scores indicating severe symptoms. The validated Chinese version uses a cutoff score of 5 to determine whether a participant has at least mild anxiety symptoms, and was also used to determine the cutoff score for this study [23, 26, 27]. The Cronbach's alpha was 0.941.

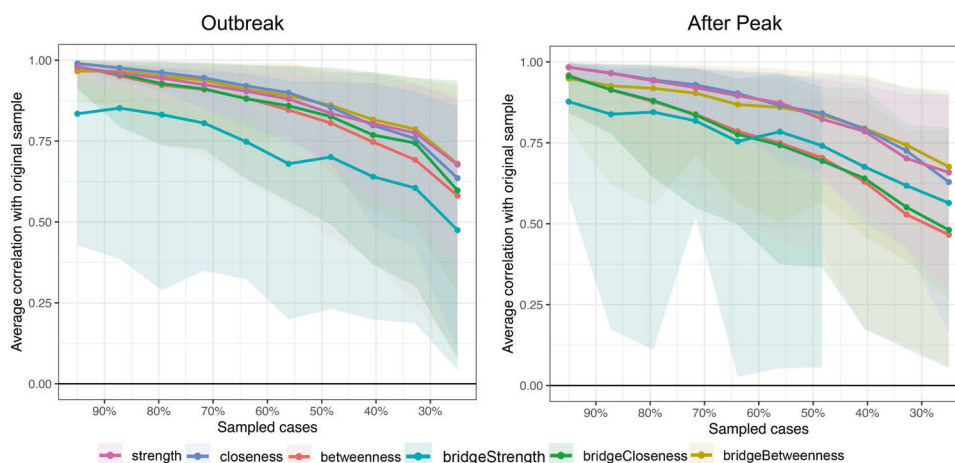
Analytical strategies

The changes of sum scores for depression and anxiety were compared, respectively, between the outbreak and after peak stages using two-tailed independent *t*-tests, with the significance level set as 0.05. The network analysis was then performed in the aspects of network estimation, network stability, and network differences [28].

Network estimation

In accordance with network parlance, the scores of the items were considered as nodes and the pair-wise correlations between these scores were considered as edges [18, 29–32]. To estimate the symptom network illustrating the relationship between depression and anxiety symptoms, pair-wise Pearson correlations were run and a sparse Gaussian graphical model with the graphical lasso was performed to estimate the network [33]. The tuning parameter was decided upon using the extended Bayesian information criterion [34]. Within this procedure, symptom networks at outbreak and after peak stages were estimated. The R package “bootnet” was utilized to complete this analysis [35]. The network structure was characterized by network centrality indices, this is where each node is placed within a weighted network, i.e., strength, closeness, and betweenness [36, 37]. Specifically, strength is the sum of edge weights directly connected to a node, which measures the importance of a symptom in the network. Closeness is the inverse of the average shortest path length between a node and other nodes, it measures how close the symptom is linked to other symptoms. Betweenness is the number of times that the shortest path between any two nodes passes through another node and measures the importance of the symptom in linking to other symptoms. The “centrality Plot” function from “qgraph” package in R was used to complete this analysis [38]. The role of a symptom as a bridge between anxiety and depressive symptoms was also assessed. Similar to the network centrality, the bridge centrality, which includes bridge strength, bridge closeness, and bridge betweenness, of each symptom was analyzed. The only difference between network and bridge centrality is that the associated two symptoms, as mentioned above, are from different disorders. The bridge centrality of the nodes measures the importance of a symptom in linking two mental health disorders. To complete this analysis the R package “networktools” [39] was used.

Fig. 2 Stability of network structures. The x-axis indicates the included portion of cases, and the y-axis indicates the correlations between the original centrality indices with the estimated centrality after dropping part of the cases. Lines with different colors represent different network properties. The shades indicate the range from the 2.5th quantile to the 97.5th quantile.



Network differences

After checking the stability of the network structure (see Supplementary information), the symptom connections and the network properties, as mentioned above, were compared. The comparison was between the outbreak and the after peak stages to allow for any symptom network changes caused by the pandemic to be quantified. The differences were quantified using permutation tests with 1000 iterations [40, 41] using the R package “Network Comparison Test” [42]. Specifically, participants were randomly assigned into two groups (within the outbreak group and the same within the after peak group). Then the symptom networks were constructed, estimated, and compared using a bootstrap method of resampling by repeating 1000 times to get the null distribution of the network differences under the null hypothesis. The significance level was set as 0.05.

In addition, the network differences in both edge and network properties, in global and local level, were compared. The global differences in edge weights were measured by the largest difference in paired edges between two networks. Meanwhile, the local edge weight differences were also separately measured. In addition, the global difference in strength was measured by the difference between average strength. Finally, the differences in local network properties were also measured separately.

Results

General differences in symptom scores

The severity of each disorder, between outbreak and after peak stages, was compared. It was found that participants at the after peak stage were more depressed than that at the outbreak stage (PHQ-9, $M_{\text{After Peak}} = 4.72$, $M_{\text{Outbreak}} = 4.17$, $t_{5075.5} = 4.0313$, $p < 0.001$). However, the anxiety disorder

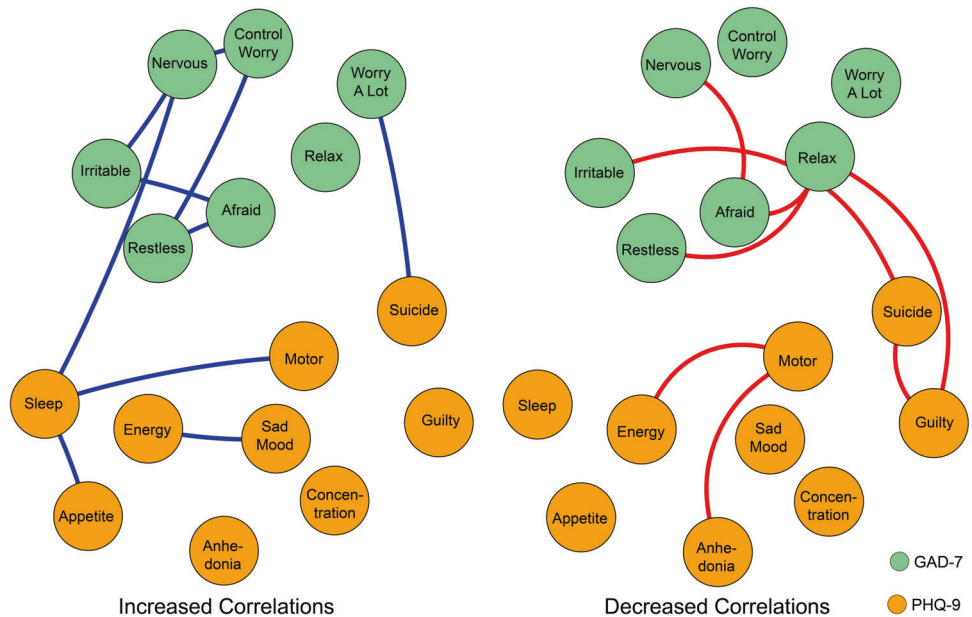
scale scores (GAD-7) showed no difference between these two stages ($M_{\text{After Peak}} = 3.60$, $M_{\text{Outbreak}} = 3.57$). Using the cutoff score of 5 (at least experiencing mild depression and anxiety symptoms), after the peak stage, 42.94% of the participants showed depression symptoms, which is significantly higher ($\chi^2 = 24.29$, $p < 0.001$) than that in outbreak stage (36.14%). Meanwhile, we found more participants showed anxiety symptoms ($\chi^2 = 10.57$, $p = 0.001$) after peak (36.41%), compared to the outbreak stage (32.05%).

Network estimation and comparison

The estimated networks are displayed in Fig. 1. Detailed edges weights are listed in Tables S2 and S3. The symptom network at outbreak stage showed different patterns regarding the number and thickness of the edges. Before characterizing the network properties and quantifying the property differences, the stability of the symptom networks during outbreak and after peak stages was evaluated by using the bootstrap method, results are displayed in Figs. S1 and 2. These figures showed that most of the edges and centrality were stable. Detailed results are provided in Supplementary information. Therefore, the network differences between the outbreak and after peak stages reflect solid changes of the psychological interaction patterns that were caused by the pandemic.

The network differences in both edge and network properties were compared. No global differences were found between networks from outbreak and after peak stages. Globally, according to the permutation test, the maximum difference (diff, contrast: after peak – outbreak, same below) between stages in any of the edge weights from both networks was not significant (the maximum difference in Edge was between “afraid” and “inability to relax” symptoms from current networks, diff = -0.16 , $p = 0.20$). Meanwhile, the global strength difference between

Fig. 3 Edges exhibiting significant differences between outbreak and after peak stages. The green nodes denote the GAD-7 items and the orange nodes denote the PHQ-9 items. Meanwhile, the blue edges denote the increased correlations between items at the after peak stage when compared with those in the outbreak stage and the red edges denote the decreased ones.



outbreak (global strength = 8.38) and after peak (global strength = 8.24) stages was also found as not significant ($p = 0.70$). However, local differences were found in multiple edges and nodes. Locally, the networks at outbreak and after peak stages differed not only in symptom connections (edge weights), but also in network properties (network and bridge centrality).

Specifically, for the edge weights, the significant positive and negative correlations were visualized separately in Fig. 3 ($p < 0.05$). At the after peak stage, insomnia symptom from the PHQ-9 showed stronger connections with impaired motor skills and changes in appetite symptoms from the GAD-7 as well as with nervous symptoms from the PHQ-9. No decreased connections with other symptoms were shown. By contrast, the symptom of inability to relax from the GAD-7 showed a decreased connection with symptoms of being afraid, restless, and irritable from the GAD-7 and also with suicidal thoughts and guilty symptoms from the PHQ-9. There were no increased connections with other symptoms shown. It should also be noted that during the after peak stage, compared to the outbreak stage, suicidal thoughts showed a decreased connection with “inability to relax” and “guilty” symptoms, whereas suicidal thoughts showed an increased connection with the “too much worry” symptom. The decreased connection between feeling guilty and suicidal thoughts from the outbreak stage to the after peak stage is also illustrated in Fig. S1, in which the edge weights, no matter if from the current sample or bootstrapped sample, ranked at the top in the outbreak stage and dropped to number nine in the after peak stage.

For the network properties, bar plots indicate the network and bridge centrality of each symptom in each stage as displayed in Fig. 4. During the outbreak, psychomotor

symptoms such as impaired “motor skills, restless, and inability to relax” exhibited high network betweenness and bridge betweenness. While during the after peak stage, although these symptoms decreased, they were still relatively high when compared with other symptoms. These symptoms might not necessarily exhibit intensive connections with other symptoms. However, they stand between the associated symptoms, which may have played a key role as a mediator that regulated the connections between the symptoms in the network [43]. Moreover, besides these symptoms, several other symptoms also showed increased network and bridge centrality during the after peak stage.

In specific, using permutation tests, it was found that the “inability to relax” symptom showed a decreased strength at the after peak stage (diff = -0.16 , $p = 0.03$) when compared to the outbreak stage. Meanwhile, the “restlessness” symptom exhibited decreased betweenness (diff = -25 , $p = 0.04$) and the “impaired motor skills symptom” showed decreased betweenness (diff = -26 , $p = 0.01$), bridge closeness (diff = -0.021 , $p = 0.048$), and bridge betweenness (diff = -27 , $p = 0.01$). By contrast, the “irritable” symptom showed increased strength (diff = 0.22 , $p = 0.02$), betweenness (diff = 14 , $p = 0.03$), and bridge betweenness (diff = 14 , $p = 0.02$) during the after peak stage, compared to the outbreak stage. Meanwhile, the “loss of energy” symptom showed increased bridge closeness (diff = 0.016 , $p = 0.03$) and bridge betweenness (diff = 11 , $p = 0.02$).

Discussion

The novelty of the current study was to evaluate the psychopathological symptom changes between the outbreak



Fig. 4 Network and bridge centrality. GAD-7: Generalized Anxiety Disorder-7; PHQ-9: Patient Health Questionnaire-9.

and after peak in China, which have significant implications for other countries that still have not reached their after peak. The current study identified the bridge symptoms and aimed to identify the risks of co-occurrence between anxiety and depressive symptoms during different phrases of COVID-19 to prevent increasing psychological distress. The network differences and changes between outbreak and after peak stages showed the impact of the COVID-19 pandemic on psychological interaction patterns.

The prevalence of anxiety and depression in this study during outbreak was 32.05% and 36.14%, and during after peak phase was 36.41% and 42.94%. Similar to the meta-analysis on depression and anxiety during the COVID-19, over one-third of the population suffered from anxiety and depressive symptoms [8]. Researchers have suggested that the mental health consequences of COVID-19 could last over time and that mental health problems could peak later than the actual pandemic [3]. Our results were consistent with the prediction and showed that after the COVID-19 peak the prevalence of depression and anxiety increased. This could be due to the far-reaching influences of COVID-19, such as the induced economic uncertainty, the fear of economic crisis and recession, and increased unemployment [44, 45]. These aftereffects could all work toward increasing anxiety and depression after the actual pandemic peak.

Research has noted that different mental health problems have emerged during the COVID-19 outbreak, which

mainly included anxiety and depression [46]. Previous research has examined the symptoms of anxiety and depression using network analysis in psychiatric patients and found that sad mood and worry were the most central symptoms in the network [28]. In the current study, during the outbreak stage psychomotor symptoms such as impaired motor skills, restlessness, and inability to relax were the most central symptoms in the network. During the after peak stage these symptoms showed a decreased centrality but were still relatively high when compared with other symptoms. In addition, the irritable symptom showed increased centrality during the after peak stage. That is, after the peak time, psychomotor centrality decreased, while the mental health problems were more severe due to the contributions from other non-psychomotor-related aspects. After the pandemic peak time, normal social activities started to resume. This could explain why people’s physical- and motor-related activities began to show normality as the psychomotor-related symptoms would be eased.

However, the mental health problems caused by the pandemic could have prolonged effects [3] and people might be anxious and depressed from other non-psychomotor aspects. During the COVID-19 period, there was a perceived decrease in physical-related activities [2], which correspond with the central symptoms identified from the data. Compared with the non-symptomatic group, depressed patients presented disturbances in psychomotor

symptoms in terms of motor activities, body movement, and motor reaction time [47–49]. Researchers have proposed that psychomotor symptoms may have unique significance in depression, which could explain the psychomotor manifestations and pathophysiologic significance of depression [47]. Restless-agitation in anxiety is also related to psychomotor functions, in which the higher level of restless-agitation indicated more severe anxiety [25].

After assessing the interactions between anxiety and depressive symptoms, it was identified that the bridge symptoms during the outbreak also focused on psychomotor symptoms such as impaired motor skills, restlessness, and inability to relax. In particular, the impaired motor skill symptoms showed a significant decrease in bridge centrality during the after peak phase, although it was still relatively high when compared with other symptoms. Meanwhile, it was also observed that the inability to relax showed decreased connections with being afraid, restlessness, suicidal thoughts, and feelings of guilt. In addition, during the after peak phase, other bridge symptoms such as irritable and loss of energy emerged, which showed higher bridge centrality than the outbreak stage. In a risky network, the connections among symptoms are tight and strong, and the activation of one symptoms could lead to others, resulting in more severe consequences [28, 30]. During the outbreak and after peak, the occurrence of either impaired motor skills with depression symptoms or restlessness with anxiety symptoms could increase the risk of activation for other mental disorders. This was different from a previous study conducted during the pre-pandemic period. Previous network analysis has shown that the association of anxiety and depression can be attributed to the strong connection from anxious worrying to sleep problems and difficulty concentrating [50]. Our results also indicated that during the after peak insomnia showed enhanced connections with appetite changes, impaired motor skills, and nervous symptoms.

Compared to the non-pandemic period, there have been a wide-scale lockdown and restrictions on transportation during the COVID-19 pandemic. The beneficial effects of physical health on mental health have been well-documented in research [51, 52]. COVID-19 is having a negative impact on people's physical activity on a global level [53, 54]. Recent COVID-19 research in psychiatric patients also reported that poor physical health was related with higher levels of anxiety and depression [55]. This could explain why the impaired motor skills aspect and restlessness become the bridge symptoms between anxiety and depression.

Depression and anxiety are frequently co-occurring mental disorders, and previous research has indicated the likelihood of a causal relationship between these two mood disorders [50]. A cognitive neuroscience study using default

model network (DMN) indicated that cortical areas of the DMN showed functional connectivity associated with anxiety and depression [56]. Similar to previous studies, the current study cannot confirm the causal relation between anxiety and depression. However, the current network analysis can be utilized in clinical practice during the COVID-19 period. A previous study suggested that interventions should focus on depression and anxiety symptoms which are most closely related to other symptoms, since those symptoms should theoretically decrease the associated risk [57]. Moreover, symptoms with a high centrality may also have crucial roles in the network [58]. Those core symptoms could have important roles in maintaining the psychopathology network and treating those symptoms could help to cure the psychopathology. That is, for treating COVID-19-related mood problems, the study results suggest clinical practitioners to focus on the symptoms highlighted by our network analysis.

Researchers have expressed concern about the consequence of mental disorders resulting from the COVID-19 pandemic [59] and mental health professionals have speculated a globe increase of mental disorders due to the impact of COVID-19 [60, 61]. WHO has also mentioned that COVID-19 related specific measures, such as self-isolation, quarantine, and social distancing, might increase loneliness and mood-related problems such as anxiety and depression in people [62]. Our results showed that during the after peak phase, the impaired motor-skill-related symptoms were still prominent. It is hard to predict the duration of the COVID-19 crisis, especially as cities such as Leicester, United Kingdom [63] are undergoing a second lockdown. It is possible that impaired motor-skill-related symptoms could persistent in people in the second lockdown control zones. During the COVID-19 lockdown, physical health professionals have recommended people to stay active with home-based physical activities in order to maintain their health, engaging in activities such as aerobic exercise training and body weight training [53]. A healthy lifestyle and regular exercise are associated with an enhanced immune system [2], which could help protect people from COVID-19-related health problems. This study suggests that health professionals could provide tailored and practical suggestions for the general population by targeting mood symptoms through exercise as a prevention or as a treatment strategy. Researchers have proposed to use mindfulness-based stress reduction practices to improve mental health during the COVID-19 [64–66]. In the current literature, mindfulness-based interventions have shown effectiveness in reducing anxiety and depression [67, 68].

There are several limitations to the study that should be acknowledged. First, depression and anxiety were measured by self-reported questionnaires rather than systematic diagnosis. Second, this network analysis on depression and

anxiety focused specifically on the COVID-19 pandemic and cannot be generalized to non-pandemic times. Therefore, the central symptoms and bridge symptoms identified in the current study may not be applicable during other periods. Third, the age of the participants was relatively young. Fourth, due to the cross-sectional design, causal relationship could not be established. Future longitudinal studies are needed to investigate the causal relationship between anxiety and depression. Finally, the study did not measure the changes in physical health and the degree of reduction in physical activities during COVID-19.

In conclusion, this is the first network analysis focusing on psychopathological symptoms during the COVID-19 pandemic, which provides valuable insights to understand the interactions between depression and anxiety. The current findings indicated the central symptoms and bridge symptoms during the COVID-19 outbreak and after peak stages in order to provide clinical suggestions for psychological interventions that target reducing the co-occurrence of symptoms between different mental health problems.

Author contributions RC, YW, ZH, and YF designed the study. YF conducted the study. YF, and ZH analyzed the data. YW, RC, ZH, and AW drafted the paper. All authors read and approved the final paper.

Compliance with ethical standards

Conflict of interest The authors declare that they have no conflict of interest.

Publisher's note Springer Nature remains neutral with regard to jurisdictional claims in published maps and institutional affiliations.

Open Access This article is licensed under a Creative Commons Attribution 4.0 International License, which permits use, sharing, adaptation, distribution and reproduction in any medium or format, as long as you give appropriate credit to the original author(s) and the source, provide a link to the Creative Commons license, and indicate if changes were made. The images or other third party material in this article are included in the article's Creative Commons license, unless indicated otherwise in a credit line to the material. If material is not included in the article's Creative Commons license and your intended use is not permitted by statutory regulation or exceeds the permitted use, you will need to obtain permission directly from the copyright holder. To view a copy of this license, visit <http://creativecommons.org/licenses/by/4.0/>.

References

1. Qiu J, Shen B, Zhao M, Wang Z, Xie B, Xu Y. A nationwide survey of psychological distress among Chinese people in the COVID-19 epidemic: implications and policy recommendations. *Gen Psychiatry*. 2020;33:e100213.
2. Kim S-W, Su K-P. Using psychoneuroimmunity against COVID-19. *Brain Behav Immun*. 2020;87:4–5.
3. Gunnell D, Appleby L, Arensman E, Hawton K, John A, Kapur N, et al. Suicide risk and prevention during the COVID-19 pandemic. *Lancet Psychiatry*. 2020;7:468–71.
4. Xiang YT, Yang Y, Li W, Zhang L, Zhang Q, Cheung T, et al. Timely mental health care for the 2019 novel coronavirus outbreak is urgently needed. *Lancet Psychiatry*. 2020;7:228–9. [https://doi.org/10.1016/S2215-0366\(20\)30046-8](https://doi.org/10.1016/S2215-0366(20)30046-8).
5. Rubin EJ, Baden LR, Morrissey S, Campion EW. Medical journals and the 2019-nCoV Outbreak. *N Engl J Med*. 2020;382:866.
6. Wang C, Pan R, Wan X, Tan Y, Xu L, McIntyre RS, et al. A longitudinal study on the mental health of general population during the COVID-19 epidemic in China. *Brain Behav Immun*. 2020;87:40–8. <https://doi.org/10.1016/j.bbi.2020.04.028>.
7. Wang C, Pan R, Wan X, Tan Y, Xu L, Ho CS, et al. Immediate psychological responses and associated factors during the initial stage of the 2019 coronavirus disease (COVID-19) epidemic among the general population in China. *Int J Environ Res Public Health*. 2020;17:1729.
8. Salari N, Hosseini-Far A, Jalali R, Vaisi-Raygani A, Rasoulpoor S, Mohammadi M, et al. Prevalence of stress, anxiety, depression among the general population during the COVID-19 pandemic: a systematic review and meta-analysis. *Global Health*. 2020;16:1–11.
9. Jones PJ, Ma R, McNally RJ. Bridge centrality: a network approach to understanding comorbidity. *Multivariate Behav Res*. 2019:1–15. <https://doi.org/10.1080/00273171.2019.1614898>. [published online ahead of print, 2019 Jun 10].
10. Schoevers RA, Deeg DJ, van Tilburg W, Beekman AT. Depression and generalized anxiety disorder: co-occurrence and longitudinal patterns in elderly patients. *Am J Geriatr Psychiatry*. 2005;13:31–9.
11. Hirschfeld RM. The comorbidity of major depression and anxiety disorders: recognition and management in primary care. *Prim Care Companion J Clin Psychiatry*. 2001;3:244–54.
12. Wolk CB, Carper MM, Kendall PC, Olinio TM, Marcus SC, Beidas RS. Pathways to anxiety-depression comorbidity: a longitudinal examination of childhood anxiety disorders. *Depress Anxiety*. 2016;33:978–86.
13. Gray JA. *The psychology of fear and stress*. Cambridge: Cambridge University Press; 1987.
14. Clark LA, Watson D. Tripartite model of anxiety and depression: psychometric evidence and taxonomic implications. *J Abnorm Psychol*. 1991;100:316–36.
15. Cummings CM, Caporino NE, Kendall PC. Comorbidity of anxiety and depression in children and adolescents: 20 years after. *Psychol Bull*. 2014;140:816–45.
16. Cramer AO, Waldorp LJ, Van Der Maas HL, Borsboom D. Complex realities require complex theories: refining and extending the network approach to mental disorders. *Behav Brain Sci*. 2010;33:178.
17. Kendler K, Zachar P, Craver C. What kinds of things are psychiatric disorders? *Psychol Med*. 2011;41:1143–50. <https://doi.org/10.1017/S0033291710001844>.
18. Borsboom D, Cramer AO. Network analysis: an integrative approach to the structure of psychopathology. *Annu Rev Clin Psychol*. 2013;9:91–121.
19. Borsboom D. Psychometric perspectives on diagnostic systems. *J Clin Psychol*. 2008;64:1089–108.
20. Schieren L, van Borkulo CD, Fried E, Goodyer IM. Assessment of symptom network density as a prognostic marker of treatment response in adolescent depression. *JAMA Psychiatry*. 2018;75:98–100.
21. Armour C, Fried EI, Deserno MK, Tsai J, Pietrzak RH. A network analysis of DSM-5 posttraumatic stress disorder symptoms and correlates in US military veterans. *J Anxiety Disord*. 2017;45:49–59.
22. Kroenke K, Spitzer RL, Williams JB. The PHQ-9: validity of a brief depression severity measure. *J Gen Intern Med*. 2001;16:606–13.

23. Lin L-Y, Wang J, Ou-yang X-Y, Miao Q, Chen R, Liang F-X, et al. The immediate impact of the 2019 novel coronavirus (COVID-19) outbreak on subjective sleep status. *Sleep Med.* <https://doi.org/10.1016/j.sleep.2020.05.018>. [published online ahead of print, 2020 1 June].
24. Arrieta J, Aguerrebera M, Raviola G, Flores H, Elliott P, Espinosa A, et al. Validity and utility of the Patient Health Questionnaire (PHQ)-2 and PHQ-9 for screening and diagnosis of depression in rural Chiapas, Mexico: a cross-sectional study. *J Clin Psychol.* 2017;73:1076–90.
25. Spitzer RL, Kroenke K, Williams JB, Löwe B. A brief measure for assessing generalized anxiety disorder: the GAD-7. *Arch Intern Med.* 2006;166:1092–7.
26. Seo J-G, Park S-P. Validation of the Generalized Anxiety Disorder-7 (GAD-7) and GAD-2 in patients with migraine. *J Headache Pain.* 2015;16:97.
27. Kertz S, Bigda-Peyton J, Bjorgvinsson T. Validity of the Generalized Anxiety Disorder-7 scale in an acute psychiatric sample. *Clin Psychol Psychother.* 2013;20:456–64.
28. Beard C, Millner AJ, Forgeard MJ, Fried EI, Hsu KJ, Treadway MT, et al. Network analysis of depression and anxiety symptom relationships in a psychiatric sample. *Psychol Med.* 2016;46:3359–69.
29. Fonseca-Pedrero E, Ortuno J, Debbane M, Chan RCK, Cicero D, Zhang LC, et al. The network structure of schizotypal personality traits. *Schizophr Bull.* 2018;44:S468–79.
30. van Borkulo C, Boschloo L, Borsboom D, Penninx BW, Waldorp LJ, Schoevers RA. Association of symptom network structure with the course of depression. *JAMA Psychiatry.* 2015;72:1219–26.
31. Carrington PJ, Scott J, Wasserman S. *Models and methods in social network analysis.* vol. 28. UK: Cambridge University Press, 2005.
32. Belvederi Murri M, Amore M, Respino M, Alexopoulos GS. The symptom network structure of depressive symptoms in late-life: results from a European population study. *Mol Psychiatry.* 2020;25:1447–56. <https://doi.org/10.1038/s41380-018-0232-0>.
33. Friedman J, Hastie T, Tibshirani R. Sparse inverse covariance estimation with the graphical lasso. *Biostatistics.* 2008;9:432–41.
34. Van Borkulo CD, Borsboom D, Epskamp S, Blanken TF, Boschloo L, Schoevers RA, et al. A new method for constructing networks from binary data. *Sci Rep.* 2014;4:1–10.
35. Epskamp S, Borsboom D, Fried EI. Estimating psychological networks and their accuracy: a tutorial paper. *Behav Res Methods.* 2018;50:195–212.
36. Opsahl T, Agneessens F, Skvoretz J. Node centrality in weighted networks: generalizing degree and shortest paths. *Soc Netw.* 2010;32:245–51.
37. Masi A, Breen EJ, Alvares GA, Glozier N, Hickie IB, Hunt A, et al. Cytokine levels and associations with symptom severity in male and female children with autism spectrum disorder. *Mol Autism.* 2017;8:63.
38. Epskamp S, Cramer AO, Waldorp LJ, Schmittmann VD, Borsboom D. qgraph: network visualizations of relationships in psychometric data. *J Stat Softw.* 2012;48:1–18.
39. Jones P. *Networktools: Assorted Tools for Identifying Important Nodes in Networks.* R Package Version 1.1.2, 2017. p. 1. Available online at: <https://cran.r-project.org/package=networktools>.
40. Bryant RA, Creamer M, O'Donnell M, Forbes D, McFarlane AC, Silove D, et al. Acute and chronic posttraumatic stress symptoms in the emergence of posttraumatic stress disorder: a network analysis. *JAMA Psychiatry.* 2017;74:135–42.
41. Spiller TR, Schick M, Schnyder U, Bryant RA, Nickerson A, Morina N. Symptoms of posttraumatic stress disorder in a clinical sample of refugees: a network analysis. *Eur J Psychotraumatol.* 2017;8:1318032.
42. Van Borkulo C, Boschloo L, Kossakowski J, Tio P, Schoevers R, Borsboom D. Comparing network structures on three aspects: a permutation test. 2017;26. www.researchgate.net/publication/314750838.
43. Barrat A, Barthelemy M, Pastor-Satorras R, Vespignani A. The architecture of complex weighted networks. *Proc Natl Acad Sci.* 2004;101:3747–52.
44. Baker SR, Bloom N, Davis SJ, Terry SJ. Covid-induced economic uncertainty. National Bureau of Economic Research. 2020. Report no. 0898-2937.
45. Nicola M, Alsafi Z, Sohrabi C, Kerwan A, Al-Jabir A, Iosifidis C, et al. The socio-economic implications of the coronavirus pandemic (COVID-19): a review. *Int J Surg.* 2020;78:185–93.
46. Shakya DR. Problems shared in psychiatry help-line of a teaching hospital in eastern Nepal during COVID-19 pandemic lockdown. *Insights Depress Anxiety.* 2020;4:37–9.
47. Sobin C, Sackeim HA. Psychomotor symptoms of depression. *Am J Psychiatry.* 1997;154:4–17.
48. Schrijvers D, Hulstijn W, Sabbe BG. Psychomotor symptoms in depression: a diagnostic, pathophysiological and therapeutic tool. *J Affect Disord.* 2008;109:1–20.
49. Parker G, Hadzi-Pavlovic D, Brodaty H, Boyce P, Mitchell P, Wilhelm K, et al. Psychomotor disturbance in depression: defining the constructs. *J Affect Disord.* 1993;27:255–65.
50. Frewen PA, Schmittmann VD, Bringmann LF, Borsboom D. Perceived causal relations between anxiety, posttraumatic stress and depression: extension to moderation, mediation, and network analysis. *Eur J Psychotraumatol.* 2013;4:20656.
51. Hernandez JC, Di Castro VC, Mendonca ME, Porto CC. Quality of life of women who practice dance: a systematic review protocol. *Syst Rev.* 2018;7:92.
52. VanKim NA, Nelson TF. Vigorous physical activity, mental health, perceived stress, and socializing among college students. *Am J Health Promot.* 2013;28:7–15.
53. Hammami A, Harrabi B, Mohr M, Krstrup P. Physical activity and coronavirus disease 2019 (COVID-19): specific recommendations for home-based physical training. *Manag Sp Leis.* 2020. <https://doi.org/10.1080/23750472.2020.1757494>. [published online ahead of print, Apr 20:1–6].
54. Lippi G, Henry BM, Bovo C, Sanchis-Gomar F. Health risks and potential remedies during prolonged lockdowns for coronavirus disease 2019 (COVID-19). *Diagnosis.* 2020;7:85–90.
55. Hao F, Tan W, Jiang L, Zhang L, Zhao X, Zou Y, et al. Do psychiatric patients experience more psychiatric symptoms during COVID-19 pandemic and lockdown? A case-control study with service and research implications for immunopsychiatry. *Brain Behav Immun.* 2020;87:100–6. <https://doi.org/10.1016/j.bbi.2020.04.069>.
56. Coutinho JF, Fernandes SV, Soares JM, Maia L, Goncalves OF, Sampaio A. Default mode network dissociation in depressive and anxiety states. *Brain Imaging Behav.* 2016;10:147–57.
57. Levinson CA, Zerwas S, Calebs B, Forbush K, Kordy H, Watson H, et al. The core symptoms of bulimia nervosa, anxiety, and depression: a network analysis. *J Abnorm Psychol.* 2017;126:340–54.
58. Hayes AM, Yasinski C, Ben Barnes J, Bockting CL. Network destabilization and transition in depression: new methods for studying the dynamics of therapeutic change. *Clin Psychol Rev.* 2015;41:27–39.
59. Kumar A, Nayar KR. COVID 19 and its mental health consequences. *J Ment Health.* 2020:1–2. <https://doi.org/10.1080/09638237.2020.1757052>. [published online ahead of print, 2020 Apr 27].

60. Li W, Yang Y, Liu ZH, Zhao YJ, Zhang Q, Zhang L, et al. Progression of mental health services during the COVID-19 outbreak in China. *Int J Biol Sci.* 2020;16:1732–8.
61. Yao H, Chen JH, Xu YF. Patients with mental health disorders in the COVID-19 epidemic. *Lancet Psychiatry.* 2020;7:e21.
62. WHO. Mental health and COVID-19. <https://www.euro.who.int/en/health-topics/health-emergencies/coronavirus-covid-19/technical-guidance/mental-health-and-covid-19> (2020). Accessed 2 Sep.
63. Harby J, Shoker S. Leicester lockdown: streets deserted in city. BBC News, <https://www.bbc.com/news/uk-england-leicestershire-53290314>; Date of accessed 9 September 2020.
64. Bäuerle A, Graf J, Jansen C, Dörrie N, Junne F, Teufel M, et al. An e-mental health intervention to support burdened people in times of the COVID-19 pandemic: CoPE It. *J Public Health.* 2020;42:647–8. <https://doi.org/10.1093/pubmed/fdaa058>.
65. Behan C. The benefits of meditation and mindfulness practices during times of crisis such as Covid-19. *Ir J Psychol Med.* 2020:1–3. <https://doi.org/10.1017/ipm.2020.38>. [published online ahead of print, 2020 May 14].
66. Venkatesh A, Edirappuli S. Social distancing in covid-19: what are the mental health implications? *BMJ.* 2020;369:m1379.
67. Serpa JG, Taylor SL, Tillisch K. Mindfulness-based stress reduction (MBSR) reduces anxiety, depression, and suicidal ideation in veterans. *Med Care.* 2014;52:S19–24.
68. Ando M, Morita T, Akechi T, Ito S, Tanaka M, Ifuku Y, et al. The efficacy of mindfulness-based meditation therapy on anxiety, depression, and spirituality in Japanese patients with cancer. *J Palliat Med.* 2009;12:1091–4.