



Cite this: *RSC Adv.*, 2018, 8, 33674

# Sensitive detection of the IS6110 sequence of *Mycobacterium tuberculosis* complex based on PCR-magnetic bead ELISA†

Soe Paing Kyaw,<sup>ab</sup> Jariya Hanthamrongwit,<sup>a</sup> Kulachart Jangpatarapongsa,<sup>c</sup> Prasong Khaenam<sup>d</sup> and Chaniya Leepiyasakulchai<sup>id\*<sup>a</sup></sup>

Tuberculosis (TB) is ranked as the top killer among infectious diseases worldwide. Early and accurate diagnosis of the disease is crucial to end the global TB epidemic. The current commercially available molecular tests are still unaffordable by most TB affected communities. Herein, we developed a novel rapid and sensitive diagnostic method to detect the IS6110 sequence of *Mycobacterium tuberculosis* (*M. tuberculosis*) complex using PCR-magnetic bead ELISA. PCR amplification of a 123 bp repetitive sequence of the IS6110 gene was performed by using digoxigenin (DIG) and biotin-labelled primers. Streptavidin-conjugated magnetic beads were used to collect the dual-labelled amplicons and subsequently, colourimetric detection was done by using horseradish peroxidase (HRP)-conjugated anti-DIG antibody. This method is able to detect *M. tuberculosis* DNA down to 0.5 fg per reaction within 3 hours. The sensitivity of IS6110 PCR detection by magnetic bead ELISA is 100 times higher than that of conventional agarose gel electrophoresis. The assay specificity was determined using a panel of DNA extracted from 10 common bacteria causing lower respiratory tract infections. No cross-reactivity was detected from those bacteria by IS6110 PCR-magnetic bead ELISA. Thus, the novel highly sensitive and specific, reduced assay time and simplicity of this PCR-magnetic bead ELISA for the detection of the specific gene of *M. tuberculosis* complex makes it an attractive diagnostic tool for large-scale screening of tuberculosis in standard clinical laboratories.

Received 6th August 2018  
Accepted 23rd September 2018

DOI: 10.1039/c8ra06599c

rsc.li/rsc-advances

## Introduction

Tuberculosis (TB) is a major public health catastrophe with 1.6 million worldwide deaths in 2016.<sup>1</sup> Despite the fact that TB is preventable and curable, it is still standing as the leading cause of death by communicable diseases.<sup>2</sup> According to the World Health Organization (WHO), only 6.3 million new cases were reported in 2016 despite 10.4 million estimated incidences.<sup>1</sup> The significant improvements in diagnostic method development of TB during recent years led to the endorsement of GeneXpert MTB/RIF and GeneXpert MTB/RIF ultra for detection of *M. tuberculosis*, by WHO.<sup>3</sup> Gene Xpert MTB/RIF is a real-time PCR-based amplification technique for simultaneous detection

of an *M. tuberculosis*-specific gene as well as gene mutations related to the rifampicin (RIF) resistance within 2 h.<sup>4</sup> However, the implementation of GeneXpert assay for detection of *M. tuberculosis* in resource-limited countries is hindered especially due to its high-cost as well as the requirements of a stable electrical power supply and maintenance.<sup>5,6</sup> Therefore, detection of TB in resource-limited high TB burden countries relies mainly upon the poor sensitive sputum smear microscopy.<sup>7</sup> Thus, the development of rapid, sensitive and cost-effective diagnostic method is the utmost important to narrow down the substantial gap in the detection of TB.

The IS6110 is an insertion sequence belongs to the IS3 family and 10–16 copies of this repetitive sequence are exclusively present in the most strains of *M. tuberculosis* complex, the causal organisms of TB in human.<sup>8</sup> The polymerase chain reaction (PCR) amplification of IS6110 sequence has been successfully applied for the detection of *M. tuberculosis* complex from the various types of clinical specimens.<sup>9–11</sup> However, the lower sensitivity of agarose gel electrophoresis, the commonly used method for the detection and visualization of PCR products, is the limitation of conventional PCR amplification.<sup>12</sup> Quantitative PCR amplification technique offers the real-time quantitation of target nucleic acids during PCR reaction cycles overcoming the laborious post-PCR detection methods.<sup>13</sup>

<sup>a</sup>Department of Clinical Microbiology and Applied Technology, Faculty of Medical Technology, Mahidol University, Bangkok, Thailand, 73170. E-mail: chaniya.lee@mahidol.edu

<sup>b</sup>Clinical Pathology Laboratory, (1000) Bedded General Hospital, Nay Pyi Taw, Myanmar, 15011

<sup>c</sup>Center for Research and Innovation, Faculty of Medical Technology, Mahidol University, Bangkok, Thailand, 73170

<sup>d</sup>Center for Standardization and Product Validation, Faculty of Medical Technology, Mahidol University, Bangkok, Thailand, 73170

† Electronic supplementary information (ESI) available. See DOI: 10.1039/c8ra06599c



However, real-time amplification requires the expensive PCR machine with integrated detection modules.<sup>14</sup>

Alternatively, enzyme-linked immunosorbent assay for colourimetric detection of DIG-labelled PCR amplicons (PCR-ELISA) was developed for the detection of pathogenic microorganisms in the past decades.<sup>15–17</sup> PCR-ELISA methods allow the semi-quantitative detection of DNA on a large number of samples simultaneously.<sup>18</sup> In standard PCR-ELISA assays, target specific biotinylated probes immobilized on the streptavidin-coated microtiter plate are used to hybridize the DIG-labelled PCR amplicons. The detection of the colourimetric signal is accomplished after incubation with the peroxidase-conjugated anti-DIG antibody and the colourimetric substrate.<sup>19</sup> PCR-ELISA technique is a sensitive, specific and less expensive method for semi-quantitative detection of PCR products.<sup>20</sup> However, the requirement of laborious and time-consuming hybridization steps are considered as the limitation of the conventional PCR-ELISA method.

An improved and optimized PCR-ELISA method was introduced by Kobets *et al.* for the detection and quantification of *Leishmania* parasites from tissue samples. The assay could detect 0.3 fg of *Leishmania* DNA per reaction which is corresponding to 0.004 parasites within 7 h after DNA preparation.<sup>21</sup> The assay was designed to overcome the laborious hybridization step by using biotin and DIG-labelled primers in the PCR amplification.<sup>21</sup> However, the method still required an overnight coating of a microtiter plate with streptavidin and longer incubation time to capture the biotinylated PCR amplicons to the streptavidin-coated wells of a microtiter plate.

Magnetic particles have been applied in a wide variety of biomedical applications due to their properties of the high surface area to volume ratio, stability, fast kinetic processes and high response rate to the external magnetic field.<sup>22–26</sup> Streptavidin-conjugated magnetic beads are widely used for selective isolation of biotinylated target molecules from the complex suspension of biomaterials since the binding of streptavidin to biotin exhibits the strongest noncovalent interaction with the dissociation constant as much as  $10^{-15}$  M.<sup>27,28</sup>

In the present study, taking advantages offered by the multiple copies of the repetitive IS6110 sequence, we developed a sensitive method for detection of *M. tuberculosis* complex using PCR and magnetic bead ELISA. Biotin and DIG-labelled IS6110 specific primers were used in PCR reaction. The amplified products were enriched by using streptavidin-conjugated magnetic beads. Subsequent colourimetric detection was directly done on the bead-bound amplicons without any pretreatments such as plate coating and blocking steps, allowing a shorter turnaround time compared to standard PCR-ELISA assay.

## Method

### DNA samples

*M. tuberculosis* DNA samples extracted from the reference strain (H37Rv, ATCC 27294) and clinical isolate were obtained from Tuberculosis Research Laboratory, National Center for Genetic Engineering and Biotechnology, and Department of Medicine,

Khon Kean University, Thailand. For assay specificity testing, 10 bacteria (*Klebsiella pneumoniae*, *Streptococcus pneumoniae*, *Acinetobacter baumannii*, *Acinetobacter lwoffii*, *Pseudomonas aeruginosa*, *Escherichia coli*, *Corynebacterium diphtheriae*, *Moraxella catarrhalis* and *Staphylococcus aureus* and *Enterobacter aerogenes*) commonly recovered from the lower respiratory tract infections were tested. All the bacteria were sub-cultured and maintained in the Department. The bacteria were grown in the Luria-Bertani broth (LB) medium at 37 °C overnight. DNA extraction was performed using Quick-gDNA MiniPrep (Zymo Research, CA, USA) DNA extraction kit following the manufacturer's instruction. The DNA concentration of all *Mycobacteria* and non-*Mycobacterium* bacteria were measured with the Nanodrop 2000 (Thermo Scientific, Wilmington, USA).

### PCR amplification

PCR amplification was performed with IS6110 specific forward primer 5'-DIG-C<sub>6</sub>-CCTGCGAGCGTAGCGTCGG-3' and reverse primer 5'-biotin-C<sub>6</sub>-CTCGTCCAGCGCCGCTTCGG-3', where C<sub>6</sub> is the 6-carbon spacer to reduce the possible steric hindrance (Pacific Science Co. Ltd, Bang Bumru, Thailand).<sup>29</sup> The optimal concentration of each DIG and biotin-labelled forward and reverse primer was determined by varying the concentration of primers from 80 to 200 nM per reaction. One nanogram of *M. tuberculosis* (H37Rv) was used as a template in PCR amplification. The optimization of primer concentration is the critical step in the PCR-magnetic bead ELISA assay since the excess biotin-labelled reverse primer in the PCR amplification can compete with the biotin-labelled PCR amplicons for the streptavidin coated on the magnetic beads. The optimal concentration of each forward and reverse primer was selected as 160 nM since the amplified products obtained from this primer set is comparable to that obtained from 200 nM (ESI Fig. S1†).

A total of 25 µl reaction was set up with 1× Go TaqGreen master mix (Madison, Wisconsin, USA), 160 nM of each forward and reverse primers, and 1 µl of DNA template. PCR reaction was carried out with initial denaturation at 94 °C for 2 min, followed by 30 cycles of 15 seconds at 94 °C, 45 seconds at 64 °C and 30 seconds at 72 °C and then one-step of final extension at 72 °C for 1 min. PCR products were separated on 2% agarose gel pre-stained with GelStar nucleic acid stain (Rockland, ME, USA) at 100 V for 30 min. Then, IS6110 specific 123 bp amplicons were visualized by using Gel Doc™ EZ System (Hercules, CA, USA). Band intensities of amplicons were measured using the volume tool of Image Lab software, version 5.2.1 (Hercules, CA, USA).

### Magnetic bead ELISA

DNA products obtained from PCR amplification were detected by the magnetic bead-based colourimetric enzyme substrate detection system. Briefly, Sera-Mag SpeedBead blocked streptavidin particles (1.0 µm diameter) (GE Healthcare, UK) were washed twice in 1× phosphate buffered saline (PBS) with 0.5% tween 20 with the aid of an external magnet. PCR amplicons were diluted to 5% concentration with binding buffer containing 2% bovine serum albumin (BSA) in PBS. Then, the diluted

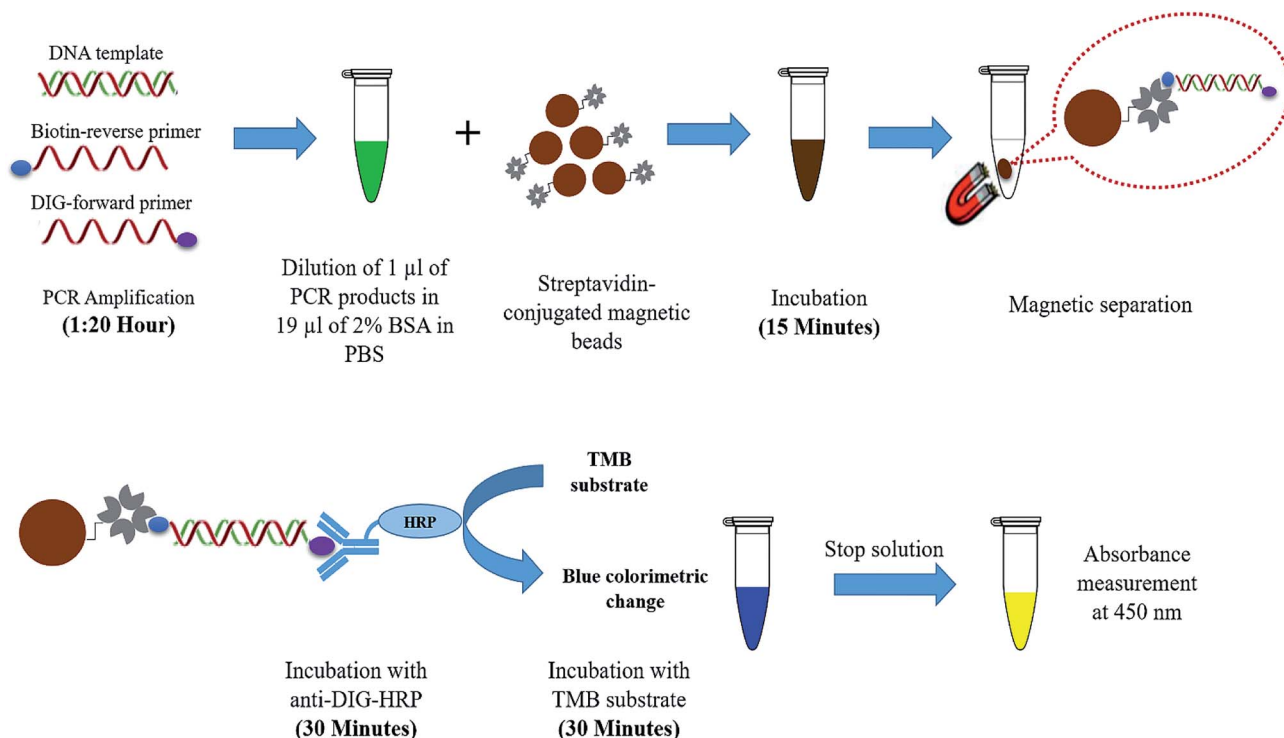


Fig. 1 Schematic illustration of PCR-magnetic bead ELISA. The component enclosed in the dashed balloon was elaborated in the lower panel.

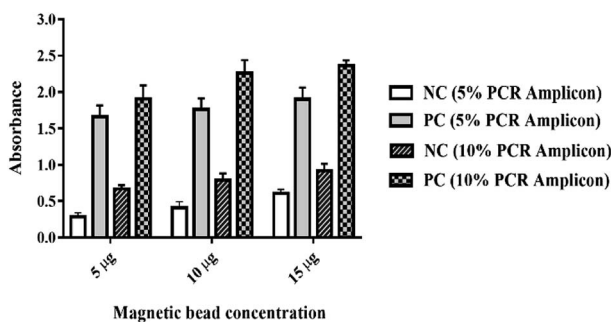


Fig. 2 Optimization of magnetic bead ELISA. Different concentration of magnetic beads (5, 10 and 15  $\mu\text{g}$ ) and PCR amplicons (5% and 10%) were incubated with 50  $\mu\text{l}$  of anti-DIG-HRP (20  $\text{ng ml}^{-1}$ ) for 30 min and colourimetric detection was done to determine the optimal concentrations of magnetic beads and PCR amplicons. One nanogram of *M. tuberculosis* (H37Rv) DNA and molecular biology grade water were used as template in the PCR amplification of positive and negative control samples respectively.

PCR amplicons were added to the washed magnetic beads and incubated for 15 min with gentle rotation to capture the biotinylated PCR amplicons on the magnetic beads. After that, the bead-bound amplicons were washed two times with the aid of an external magnetic field. Thereafter, 50  $\mu\text{l}$  of HRP-conjugated mouse monoclonal anti-DIG antibody (Ab 6212, Abcam, UK) diluted with 0.5% BSA in deionized water to get a final concentration of 20  $\text{ng ml}^{-1}$  was added to the amplicons bound to the magnetic beads and incubated at room temperature for 30 min. The beads were then washed for 4 times with washing buffer (0.5% tween in  $1\times$  PBS) to remove unbound excess HRP-

conjugated antibodies. Fifty microliters of TMB substrate (Merck, Billerica, MA, USA) was added and incubated in the dark for 30 min to develop the colour. Finally, 50  $\mu\text{l}$  of TMB stop solution (BioLegend, San Diego CA, USA) was added to stop the colour reaction. The external magnet was used to hold the magnetic beads and supernatant was collected. The optical density was measured at 450 nm using BioTek Synergy HTX multi-mode microplate reader (Winooski, VT, USA).

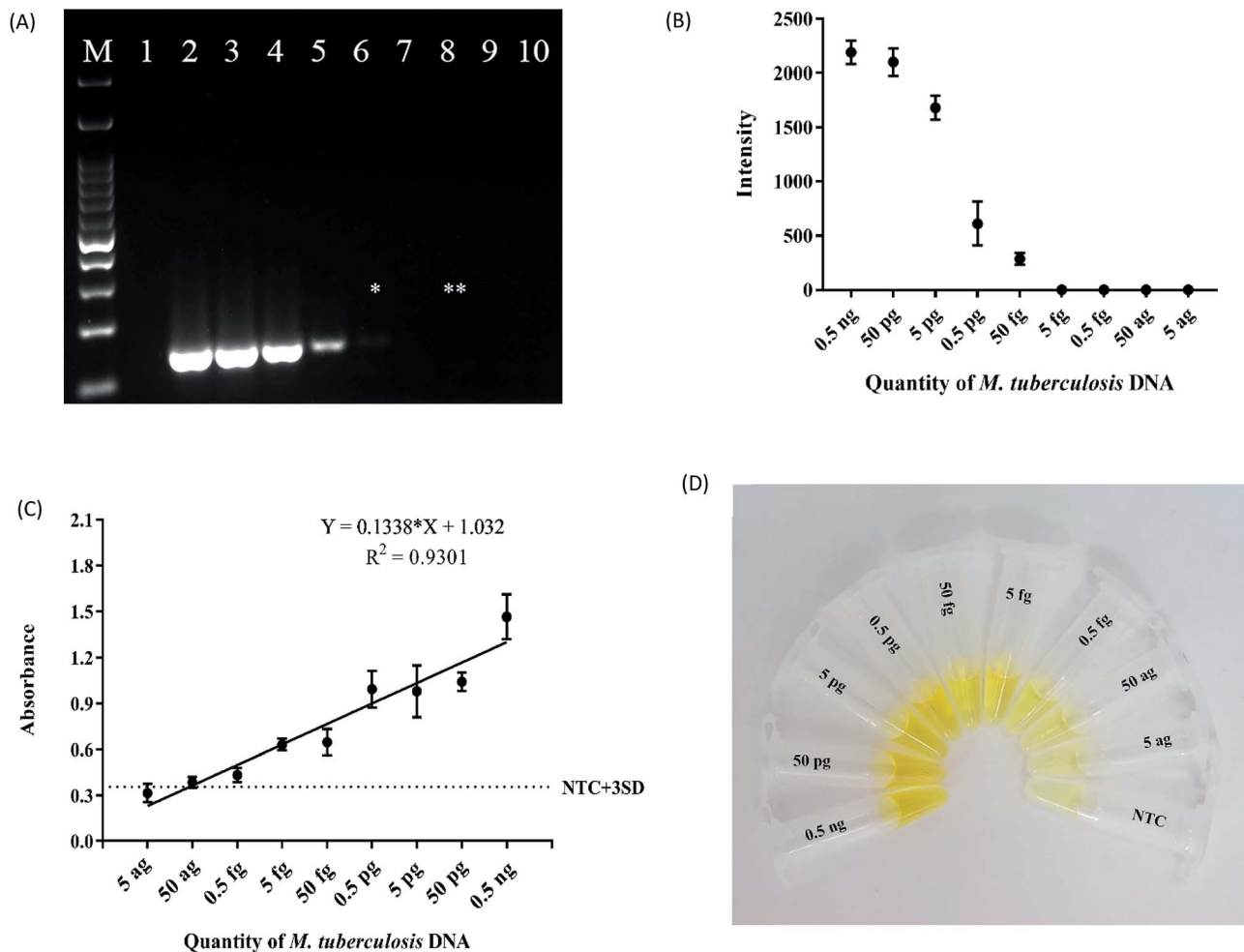
### Statistical analysis

The absorbance values were imported to GraphPad Prism version 7.00 (GraphPad Software Inc, La Jolla, CA, USA) and linear regression analysis was done to observe the relationship between the DNA concentration and absorbance values. Samples are regarded as positive for the IS6110 gene when the absorbance values are above the cut-off value derived from the average absorbance + 3 standard deviation (SD) of no template control samples.

## Results and discussion

### Scheme design

Herein, a rapid and sensitive PCR-magnetic bead ELISA was developed for *M. tuberculosis* detection. The schematic illustration of the developed assay is shown in Fig. 1. PCR amplification of the IS6110 sequence was performed with target-specific forward and reverse primers modified with DIG and biotin respectively. Streptavidin-conjugated magnetic beads were used not only to capture the biotinylated PCR amplicons



**Fig. 3** (A) Agarose gel electrophoresis of PCR amplicons obtained from 10-fold serial dilution of H37Rv DNA template starting from 0.5 ng to 5 ag (M = marker, 1 = NTC, 2 = 0.5 ng, 3 = 50 pg, 4 = 5 pg, 5 = 0.5 pg, 6 = 50 fg, 7 = 5 fg, 8 = 0.5 fg, 9 = 50 ag and 10 = 5 ag). The lowest detection limit of agarose gel electrophoresis (marked with \*) is 50 fg which is 100 times higher than the 0.5 fg detection limit of magnetic bead ELISA (\*\*). (B) An intensity plot obtained from triplicate analysis of agarose gel images. (C) Sensitivity testing of magnetic bead ELISA. The same set of PCR amplicons used in the agarose gel electrophoresis were tested by magnetic bead ELISA. Error bars were obtained from 3 independent experiments. The lowest concentration of *M. tuberculosis* DNA above the cutoff value was 0.5 fg. (D) A representative photograph showing the colour intensity of magnetic bead ELISA from various concentration of *M. tuberculosis* template and no template control (NTC).

but also to provide the solid support for colourimetric detection of the bead-bound amplicons. The magnetic beads used in the current assay are pre-blocked with non-protein and non-surfactant blocking agent to minimize the non-specific bindings in the antigen-antibody reaction. The capture of amplicons to the beads is accomplished within 15 min as streptavidin-coated magnetic beads exhibit high affinity to the biotinylated targets. Moreover, the faster magnetic response time of magnetic beads allows the easy and quick handling of amplicons during washing steps. The turnaround time for the colourimetric detection after PCR amplification is less than 90 min.

### Optimization of assay platform

The experimental conditions including the concentration of HRP-conjugated anti-DIG, the concentration of magnetic beads and the amount of PCR amplicons were optimized to attain the

maximum performance of the assay. To obtain the optimal colour intensity, proper concentration of HRP-conjugated anti-DIG antibody was ascertained as follows. HRP-conjugated anti-DIG antibody diluted to  $200 \text{ ng ml}^{-1}$ ,  $100 \text{ ng ml}^{-1}$ ,  $50 \text{ ng ml}^{-1}$ ,  $25 \text{ ng ml}^{-1}$  and  $20 \text{ ng ml}^{-1}$  in 0.5% BSA were incubated with TMB substrate for 30 min and the optical density for each concentration was measured after adding the TMB stop solution. The optimal concentration of HRP-conjugated anti-DIG antibody was selected at  $20 \text{ ng ml}^{-1}$  (data not shown). Then, the concentration of magnetic bead per reaction (5, 10 and 15  $\mu\text{g}$ ) and the amount of PCR amplicons per reaction (5%, and 10% in 2% BSA in PBS) were optimized simultaneously. The results showed that the absorbance of positive and negative control samples were increased together with the concentration of both magnetic beads and PCR amplicons while maintaining the absorbance difference between negative and positive samples (Fig. 2). Therefore, the concentration of magnetic beads and PCR amplicons that provide the lowest absorbance of

negative samples were selected as the optimal concentration. The optimal concentration of magnetic beads and PCR amplicons were 5  $\mu\text{g}$  and 5% (1  $\mu\text{l}$  of PCR products in 19  $\mu\text{l}$  of 2% BSA in  $1\times$  PBS) per reaction. The optimization of the concentration of magnetic beads and PCR products is critical for the success of the current assay since there was no difference in absorbance values from the different concentrations of undiluted PCR products (data not shown). This is plausible since highly saturated streptavidin molecules on the magnetic beads allowed the maximal binding of biotinylated PCR amplicons that provide the high signal intensities between different concentrations of PCR products. The optimal incubation time for binding HRP-conjugated anti-DIG was 30 min. Colour development was done by incubation with TMB substrate for 30 min after washing the excess antibodies with  $1\times$  PBS for 4 times.

### Analytical sensitivity

The analytical sensitivity of magnetic bead ELISA was determined using a 10-fold serial dilution of H37Rv DNA, starting from 0.5 ng to 5  $\mu\text{g}$  per PCR reaction. Six and one microliter(s) of each of these products were analyzed by agarose gel electrophoresis and magnetic bead ELISA, respectively. Due to the difference in PCR efficiency, the difference in band intensities were also observed by agarose gel electrophoresis (Fig. 3A). To estimate the concentration of PCR amplicon obtained from each DNA dilution, relative DNA concentrations were calculated based on the DNA ladder concentration suggested by the manufacturer (Biotech rabbit, Berlin, Germany). However, the band intensities from 0.5 ng to 5  $\mu\text{g}$  DNA input were very similar, suggesting the saturation of PCR reaction (Fig. 3B). Therefore, only 2 dilutions of DNA input, 0.5  $\mu\text{g}$ , and 50  $\text{fg}$  were used in the estimation of PCR amplicon concentration. Roughly, 4 and 2  $\text{ng } \mu\text{l}^{-1}$  were estimated for these two dilutions, respectively (ESI Fig. S2†). Since we loaded 6  $\mu\text{l}$  of PCR products

onto agarose gel, the lowest quantity of PCR amplicon visible by our electrophoresis system is 12 ng.

In order to determine the lowest detection limit of magnetic bead ELISA assay, the positive result is considered by comparing to the cutoff absorbance 0.355 calculated from the average absorbance + 3 SD of the negative controls (no template control). Although the variation in PCR efficiency was also detected by this assay, almost all dilutions, except 5 and 50  $\mu\text{g}$ , of DNA input were considered as positive with the magnetic bead ELISA (Fig. 3C). The assay also captured slightly lower in PCR efficiency obtained from 5  $\text{fg}$  DNA input while the band of this DNA dilution was absent by agarose gel inspection. In the other word, both 5 and 50  $\text{fg}$  DNA input might yield approximately 2 ng amplicon but the quantity slightly less than 2 ng cannot be detected by agarose gel inspection. However, with the signal amplification of ELISA, 5  $\text{fg}$  input DNA provides the absorbance close to that obtained from 50  $\text{fg}$ . The mean absorbance as well as its SD of the lowest quantity of *M. tuberculosis* DNA above the cut-off value was 0.5  $\text{fg}$  input. Thus, the limit of detection (LOD) of magnetic bead ELISA was 0.5  $\text{fg}$  which is more sensitive than 1  $\text{pg}$  detection limit of IS6110 detection using isothermal amplification method.<sup>30</sup> Fig. 3D showed the colour intensity obtained from each concentration of H37Rv DNA samples. These results indicate that magnetic bead ELISA is 100 times more sensitive than the conventional agarose gel electrophoresis. According to this high sensitivity, our PCR ELISA-based assay shows a great promise to detect even a trace amount of PCR amplicons as long as PCR is success.

In addition, the results of our developed assay show a good linear relationship between absorbance and the quantity of *M. tuberculosis* DNA with the  $R^2 = 0.9301$  (Fig. 3D). This high correlation offers the good performance of the assay to distinguish between low and high DNA input albeit qualitative measurement is the expected principle of this assay. Interestingly, it has been estimated that one genome equivalent of *M. tuberculosis* is 5  $\text{fg}$  of DNA.<sup>31</sup> Therefore, it can be expected that

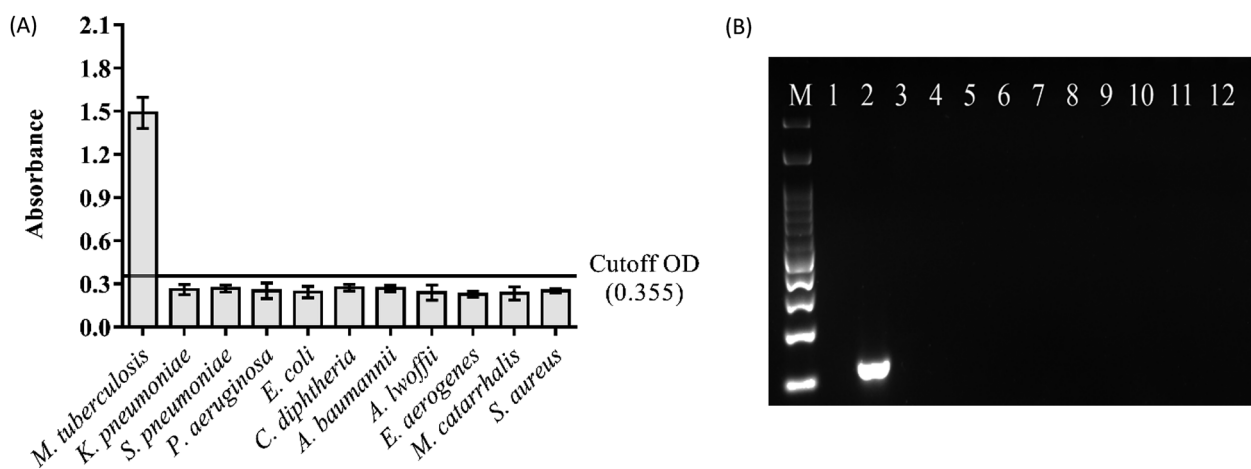


Fig. 4 Specificity testing of (A) magnetic bead ELISA. PCR amplification was performed with 1 ng of DNA samples from each non-*Mycobacterium* bacteria and *M. tuberculosis* clinical isolate. Error bars were obtained from two independent experiments. (B) Agarose gel electrophoresis of PCR amplicons from specificity testing. M = Marker, 1 = NTC, 2 = *M. tuberculosis*, 3 = *K. pneumoniae*, 4 = *S. pneumoniae*, 5 = *P. aeruginosa*, 6 = *E. coli*, 7 = *C. diphtheriae*, 8 = *A. baumannii*, 9 = *A. lwoffii*, 10 = *E. aerogenes*, 11 = *M. catarrhalis* and 12 = *S. aureus*. IS6110 specific 123 bp amplicon was detected only in DNA sample extracted from *M. tuberculosis*.

our magnetic bead ELISA is sensitive for the detection of *M. tuberculosis* even if only one organism is presented in the sample.

### Assay specificity

To verify the specificity, genomic DNA extracted from *K. pneumoniae*, *S. pneumoniae*, *P. aeruginosa*, *E. coli*, *C. diphtheriae*, *A. baumannii*, *A. lwoffii*, *E. aerogenes*, *M. catarrhalis* and *S. aureus* together with *M. tuberculosis* DNA extracted from clinical isolate were tested with PCR-magnetic bead ELISA. PCR amplification was performed with 1 ng of each bacterial DNA as the template by using IS6110 specific primers. Then, magnetic bead ELISA was performed and the results were compared with the agarose gel electrophoresis. The absorbance values of all non-*Mycobacterium* bacterial DNA samples were below the cut-off absorbance of 0.355, indicating that the magnetic bead ELISA is specific to IS6110 sequence only (Fig. 4A) as well as there was no non-specific background of the detecting system. Concordance with the agarose gel electrophoresis, 123 bp specific amplicon was detected only in *M. tuberculosis* DNA sample and exhibit the agreement of results with the magnetic bead ELISA (Fig. 4B).

## Conclusion

In summary, we have developed a sensitive method for the detection of the IS6110 sequence of *M. tuberculosis* complex. Firstly, the exponential amplification power of PCR was used to amplify the target sequence to get the biotin and DIG dual-labelled amplicons. Then, separation of dual-labelled PCR amplicons from the un-amplified products was done using streptavidin-conjugated magnetic beads and subsequent colourimetric detection was done to the amplicons bound to the beads. Utilization of specific biotin and DIG primers in the PCR reaction overcomes the requirement of laborious hybridization steps in the conventional PCR-ELISA system. As colourimetric detection was done on the magnetic beads-bound PCR amplicons in the single tube, the step of overnight coating of the ELISA plates with streptavidin is avoidable in our developed assay. The handling of magnetic beads-bound amplicons during incubation steps and washing steps was done quickly with the external magnet. The detection limit of the magnetic bead ELISA is 0.5 fg of *M. tuberculosis* DNA, which is 100 times more sensitive than the conventional agarose gel electrophoresis. This method also provides the semi-quantitative detection of DNA as the colour intensity is directly proportional to the amount of PCR amplicons. In addition, reagents and instruments required for magnetic bead ELISA are commercially available and affordable. Thus, our developed assay could be useful for the detection of *M. tuberculosis*, especially in the remote areas where the diagnosis of tuberculosis remains concerned. Finally, this assay platform could be applied to the detection of any targeted gene.

## Conflicts of interest

The authors have no conflicts of interest to declare.

## Acknowledgements

We thank senior researcher Dr Saradee Warit, Tuberculosis research unit, National Science and Technology Development Agency, Thailand and Assistant Professor Dr Kiaticchai Faksri, Faculty of Medicine, Khon Kaen University for providing DNA samples from *Mycobacterium tuberculosis* H37Rv reference strain and from the clinical isolate. We also grateful to Assistant Professor Dr Sakda Yainoi and Assistant Professor Dr Rungrot Cherdtrakulkiat, Faculty of Medical Technology, Mahidol University for the culture isolate of non-*Mycobacterium* bacteria. This work is supported by Mahidol-Norway capacity building initiative for ASEAN PhD scholarship to SPK and National Science and Technology Development Agency, Thailand grant to CL. The funders had no role in study design, data analysis and decision for publication of the manuscript.

## References

- 1 World Health Organization, in *Global tuberculosis report 2017*, 2017.
- 2 World Health Organization, *Bending the curve—ending TB: annual report 2017*, WHO report, 2017.
- 3 A. L. García-Basteiro, A. DiNardo, B. Saavedra, *et al.*, Point of care diagnostics for tuberculosis, *Rev. Port. Pneumol.*, 2018.
- 4 R. McEnerney, M. Maeurer, I. Abubakar, *et al.*, Tuberculosis diagnostics and biomarkers: needs, challenges, recent advances, and opportunities, *J. Infect. Dis.*, 2012, **205**(suppl. 2), S147–S158.
- 5 C. C. Boehme, M. P. Nicol, P. Nabeta, *et al.*, Feasibility, diagnostic accuracy, and effectiveness of decentralised use of the Xpert MTB/RIF test for diagnosis of tuberculosis and multidrug resistance: a multicentre implementation study, *Lancet*, 2011, **377**(9776), 1495–1505.
- 6 B. Y. Ng, E. J. Wee, N. P. West and M. Trau, Naked-Eye Colorimetric and Electrochemical Detection of *Mycobacterium tuberculosis* toward Rapid Screening for Active Case Finding, *ACS Sens.*, 2015, **1**(2), 173–178.
- 7 A. J. Caulfield and N. L. Wengenack, Diagnosis of active tuberculosis disease: From microscopy to molecular techniques, *Journal of Clinical Tuberculosis and Other Mycobacterial Diseases*, 2016, **4**, 33–43.
- 8 B. Sekar, L. Selvaraj, A. Alexis, S. Ravi, K. Arunagiri and L. Rathinavel, The utility of IS6110 sequence based polymerase chain reaction in comparison to conventional methods in the diagnosis of extra-pulmonary tuberculosis, *Indian J. Med. Microbiol.*, 2008, **26**(4), 352.
- 9 A. L. Osman, N. S. Saeed and M. M. Elhassan, Polymerase Chain Reaction targeting insertion sequence IS6110 for the diagnosis of pulmonary tuberculosis among Sudanese children and young adults, *Int. J. Mycobact.*, 2014, **3**(4), 252–258.
- 10 P. S. Deshpande, R. S. Kashyap, S. S. Ramteke, *et al.*, Evaluation of the IS6110 PCR assay for the rapid diagnosis of tuberculous meningitis, *Cerebrospinal Fluid Res.*, 2007, **4**(1), 10.

- 11 V. Makesh Kumar, R. Madhavan and S. Narayanan, Polymerase chain reaction targeting insertion sequence for the diagnosis of extrapulmonary tuberculosis, *Indian J. Med. Res.*, 2014, **139**(1), 161.
- 12 M. J. Sue, S. K. Yeap, A. R. Omar and S. W. Tan, Application of PCR-ELISA in molecular diagnosis, *BioMed Res. Int.*, 2014, **2014**.
- 13 E. A. Mothershed and A. M. Whitney, Nucleic acid-based methods for the detection of bacterial pathogens: present and future considerations for the clinical laboratory, *Clin. Chim. Acta*, 2006, **363**(1–2), 206–220.
- 14 R. A. Babu, S. Manoharan, P. Ramadass and N. Chandran, Evaluation of RT-PCR assay for routine laboratory diagnosis of rabies in post mortem brain samples from different species of animals, *Indian J. Virol.*, 2012, **23**(3), 392–396.
- 15 C. Metzger-Boddien and J. Kehle, Development and evaluation of a sensitive PCR-ELISA for detection of adenoviruses in feces, *Intervirology*, 2005, **48**(5), 297–300.
- 16 G. Daeschlein, O. Assadian, F. Daxboeck and A. Kramer, Multiplex PCR-ELISA for direct detection of MRSA in nasal swabs advantageous for rapid identification of non-MRSA carriers, *Eur. J. Clin. Microbiol. Infect. Dis.*, 2006, **25**(5), 328–330.
- 17 A. Di Pinto, V. Terio, P. Di Pinto, V. Colao and G. Tantillo, Detection of *Vibrio parahaemolyticus* in shellfish using polymerase chain reaction–enzyme-linked immunosorbent assay, *Lett. Appl. Microbiol.*, 2012, **54**(6), 494–498.
- 18 F. Tayebbeh, S. Nazarian, S. A. Mirhosseini and J. Amani, Novel PCR-ELISA Technique as a Good Substitute in Molecular Assay, *J. Appl. Biotechnol. Rep.*, 2017, **4**(2), 567–572.
- 19 C. P. Adikaram, J. Perera and S. S. Wijesundera, DNA probe based colorimetric method for detection of rifampicin resistance of *Mycobacterium tuberculosis*, *J. Microbiol. Methods*, 2014, **96**, 92–98.
- 20 L. I. Gomes, L. H. dos Santos Marques, M. J. Enk, M. C. de Oliveira, P. M. Z. Coelho and A. Rabello, Development and evaluation of a sensitive PCR-ELISA system for detection of *Schistosoma* infection in feces, *PLoS Neglected Trop. Dis.*, 2010, **4**(4), e664.
- 21 T. Kobets, J. Badalová, I. Grekov, H. Havelková, M. Svobodová and M. Lipoldová, *Leishmania* parasite detection and quantification using PCR-ELISA, *Nat. Protoc.*, 2010, **5**(6), 1074.
- 22 A. van Reenen, A. M. de Jong, J. M. den Toonder and M. W. Prins, Integrated lab-on-chip biosensing systems based on magnetic particle actuation—a comprehensive review, *Lab Chip*, 2014, **14**(12), 1966–1986.
- 23 A. Ito, M. Shinkai, H. Honda and T. Kobayashi, Medical application of functionalized magnetic nanoparticles, *J. Biosci. Bioeng.*, 2005, **100**(1), 1–11.
- 24 A. Akbarzadeh, M. Samiei and S. Davaran, Magnetic nanoparticles: preparation, physical properties, and applications in biomedicine, *Nanoscale Res. Lett.*, 2012, **7**(1), 144.
- 25 V. Mani, B. V. Chikkaveeraiah and J. F. Rusling, Magnetic particles in ultrasensitive biomarker protein measurements for cancer detection and monitoring, *Expert Opin. Med. Diagn.*, 2011, **5**(5), 381–391.
- 26 N. Tran and T. J. Webster, Magnetic nanoparticles: biomedical applications and challenges, *J. Mater. Chem.*, 2010, **20**(40), 8760–8767.
- 27 Z. Zhang, H. Zhu, Y. Tang, *et al.*, Preparation and application of streptavidin magnetic particles, *Sci. China, Ser. B: Chem.*, 2007, **50**(1), 127–134.
- 28 H. Sakahara and T. Saga, Avidin–biotin system for delivery of diagnostic agents, *Adv. Drug Delivery Rev.*, 1999, **37**(1–3), 89–101.
- 29 K. D. Eisenach, M. Donald Cave, J. H. Bates and J. T. Crawford, Polymerase chain reaction amplification of a repetitive DNA sequence specific for *Mycobacterium tuberculosis*, *J. Infect. Dis.*, 1990, **161**(5), 977–981.
- 30 D. Liu, B. Zhao, X. Ou, *et al.*, A novel isothermal amplification-based method to detect *Mycobacterium tuberculosis* complex, *J. Microbiol. Methods*, 2018, **145**, 59–65.
- 31 B. Y. Ng, E. J. Wee, N. P. West and M. Trau, Rapid DNA detection of *Mycobacterium tuberculosis*-towards single cell sensitivity in point-of-care diagnosis, *Sci. Rep.*, 2015, **5**, 15027.