



OPINION ARTICLE

REVISED **The endothelial deprotection hypothesis for lupus pathogenesis: the dual role of C1q as a mediator of clearance and regulator of endothelial permeability [v2; ref status: indexed, <http://f1000r.es/5d5>]**

József Prechl^{1,2}, László Cziráj³

¹Diagnosticum Zrt, Budapest, 1047, Hungary

²MTA-ELTE Immunology Research Group, Budapest, 1117, Hungary

³Department of Rheumatology and Immunology, Clinic Center, University of Pécs, Pécs, 7632, Hungary

v2 **First published:** 26 Jan 2015, 4:24 (doi: [10.12688/f1000research.6075.1](https://doi.org/10.12688/f1000research.6075.1))
Latest published: 11 May 2015, 4:24 (doi: [10.12688/f1000research.6075.2](https://doi.org/10.12688/f1000research.6075.2))

Abstract

Systemic lupus erythematosus (SLE) is a heterogeneous multifactorial systemic autoimmune disease affecting several organs. SLE can start relatively early in life and results in impaired quality of life and shortened life expectancy because of a gradual disease progression leading to cardiovascular, renal and neoplastic disease. The basic mechanisms of the pathogenesis of the disease still remain to be clarified. It is clear that complement proteins play a key and complex role in the development of SLE. Complement component C1q has been known to be a fundamental component of lupus development, but most explanations focus on its role in apoptotic debris removal. Importantly, C1q was recently found to play a key role in the maintenance of vascular endothelial integrity.

We suggest that apoptotic products, endothelial cells and extracellular matrix components, which display negatively charged moieties, compete for binding to molecules of the innate humoral immune response, like C1q. Genetic or acquired factors leading to an increased load of apoptotic cell debris and decrease or absence of C1q therefore interfere with the regulation of endothelial permeability and integrity. Furthermore, we suggest that lupus is the net result of an imbalance between the two functions of immune clearance and vascular endothelial integrity maintenance, an imbalance triggered and sustained by autoimmunity, which skews C1q consumption by IgG-mediated complement classical pathway activation on autoantigens. In this triangle of innate clearance, autoimmunity and endothelial integrity, C1q plays a central role.

Hence, we interpret the pathogenesis of lupus by identifying three key components, namely innate immune clearance, autoimmunity and endothelial integrity and we establish a link between these components based on the protective role that innate clearance molecules play in endothelial renewal. By including the vasoprotective role of C1q in the interpretation of SLE development we attempt to provide novel explanations for the symptoms, organ damage, diagnostic and therapeutic difficulties of the disease.

Open Peer Review

Referee Status:

Invited Referees

1 2 3

REVISED**version 2**

published
11 May 2015

version 1

published
26 Jan 2015



report



report



report

- 1 **Marko Radic**, University of Tennessee Health Science Center USA
- 2 **Gregg Silverman**, New York University Langone Medical Center USA
- 3 **Fleur Bossi**, University of Trieste Italy

Discuss this article

Comments (0)

Corresponding author: József Prechl (jprechl@gmail.com)

How to cite this article: Prechl J and Czirják L. **The endothelial deprotection hypothesis for lupus pathogenesis: the dual role of C1q as a mediator of clearance and regulator of endothelial permeability [v2; ref status: indexed, <http://f1000r.es/5d5>]** *F1000Research* 2015, 4:24 (doi: [10.12688/f1000research.6075.2](https://doi.org/10.12688/f1000research.6075.2))

Copyright: © 2015 Prechl J and Czirják L. This is an open access article distributed under the terms of the [Creative Commons Attribution Licence](#), which permits unrestricted use, distribution, and reproduction in any medium, provided the original work is properly cited. Data associated with the article are available under the terms of the [Creative Commons Zero "No rights reserved" data waiver](#) (CC0 1.0 Public domain dedication).

Grant information: The project that helped the development of this hypothesis was funded by the European Union Seventh Framework Programme FP7/2007–2013 under grant agreement n° 314971 (GAPAID-314971, FP7-SME-2012), entitled 'Genes and proteins for autoimmunity diagnostics' and by support from the National Science Fund to JP, grant number K109683 and to LC, grant number K 112939. *The funders had no role in study design, data collection and analysis, decision to publish, or preparation of the manuscript.*

Competing interests: Diagnosticum and MTA-TKI, the employers of JP, are the licensor/owner of a patent on measuring complement activation on microarrays and owners of a patent application on the assessment of immunological reactivity using cell-based functional assays.

First published: 26 Jan 2015, 4:24 (doi: [10.12688/f1000research.6075.1](https://doi.org/10.12688/f1000research.6075.1))

First indexed: 18 Mar 2015, 4:24 (doi: [10.12688/f1000research.6075.1](https://doi.org/10.12688/f1000research.6075.1))

REVISED Amendments from Version 1

In this version of the manuscript, we have inserted two new figures in addition to making slight formatting corrections to previous Figure 2. As requested by the referees, we have supplemented figure legends, inserted new citation and corrected grammatical errors.

See referee reports

Introduction

A database search for the word “lupus” in the title of biomedical publications brings up 39,306 papers as of the writing of this manuscript. Thus, there is an abundance of experimental and clinical research data on systemic lupus erythematosus (SLE), yet the comprehensive etiopathogenesis of this group of heterogeneous diseases with multifactorial origin is still unknown (Figure 1). SLE is an enigmatic disease, with a range of manifestations. Indeed, currently systemic lupus erythematosus is classified, but not diagnosed, on the basis of the coexistence of several alterations from a list of criteria^{1,2}. Immune complexes containing IgG and complement are found deposited in various tissues and are responsible for inflammatory processes causing skin rash, mucosal ulcers, arthritis, nephritis, and serositis. Hematological changes include diverse cytopenias, while immunological tests show antibodies against nuclear material, dsDNA, Sm antigen and phospholipids³.

In an attempt to simultaneously monitor antibody and complement binding to various autoantigens, we have developed a functional immunomics approach^{4,5} allowing a complex analysis of serological events in SLE. Interestingly, we observed that copious amounts of complement products are fixed by nucleic acids but not other negatively charged molecules in SLE patients with decreased complement C4 levels⁶ (and manuscript in preparation), which finally led us to formulate the hypothesis presented below. In this paper, we attempt to collect all the pieces of knowledge of the lupus puzzle and place them next to each other in a way that a novel picture

emerges. We hope that this hypothesis will stimulate discussions along a novel course and finally will result in a better understanding of the lupus syndrome.

The pieces of the puzzle we already have

We can arrange most of the currently accepted mechanisms of lupus pathology in three main sets of factors: impaired clearance, autoimmunity and vascular injury. The elements of these particular processes are highly interconnected but for didactic reasons we will discuss them within one of these categories.

Impaired immune clearance

Increased load of cellular debris. The initiation of pathological autoimmune responses requires autoantigens to reach and trigger lymphocytes in the lymphoid organs. Cellular debris released from dying and dead cells is thought to be the most important source of self-antigen in lupus. One of the most widely used animal models of human SLE is the MRL/lpr mouse strain. These animals carry multiple susceptibility genes, which control lymphoproliferation and apoptosis⁷, and spontaneously develop a lupus-like disease with antinuclear antibody production and nephritis. Interestingly, in human autoimmune lymphoproliferative syndrome (ALPS), where apoptotic signaling is impaired, some of the symptoms observed in SLE also appear⁸, underlining the role of this factor. Direct evidence for the role of apoptotic load is also available, since increased apoptosis of monocytes⁹, neutrophils¹⁰, lymphocytes¹¹ and endothelial cells (EC)¹² has been described in SLE patients.

Impairment of apoptotic debris removal. Cells undergoing programmed cell death are cleared from the body without inducing inflammation. This is part of the physiological tissue maintenance and regeneration events continuously occurring in the body. Dead cells, apoptotic blebs and debris are recognized by several soluble molecules and cell surface receptors, all promoting uptake by tissue macrophages and dendritic cells. This silent removal locally prevents inflammation and systemically the development of autoreactive lymphocytes¹³. Inefficient removal of apoptotic cell debris in lupus¹⁴

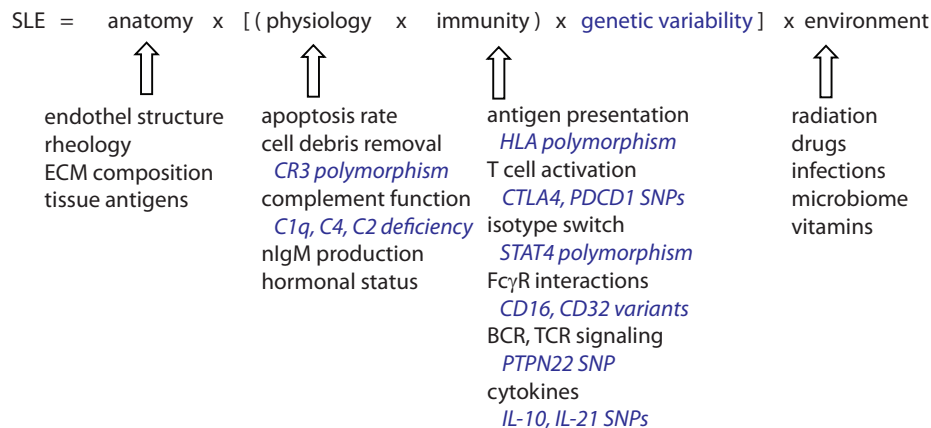


Figure 1. Systemic lupus erythematosus is a heterogeneous group of multifactorial diseases. The development of lupus is influenced by genetic factors, controlling individual variability especially with regard to the immune system and also with regard to physiology (some examples of genetic variability are shown in blue). Anatomical features may determine organ damage and source of autoantigens. Environmental factors can act upon all these elements, and may be the component we could try to modulate with the aim of preventing disease development. SLE, systemic lupus erythematosus; BCR, B-cell antigen receptor; TCR, T-cell antigen receptor; ECM, extracellular matrix; FcγR, Fc receptor for IgG.

leads to the clonal expansion of autoreactive lymphocytes, with both B cells and T cells involved. Nucleosomes become accessible on the cell surface¹⁵, exposing negatively charged nucleic acid containing complexes. NETosis, a form of programmed cell death recently described in neutrophil granulocytes, has also been implicated as a source of cellular debris that contributes to lupus pathogenesis¹⁶.

The complement system plays an important role in apoptotic cell removal: C1q binds to negatively charged molecules like phosphatidyl serine and cardiolipin¹⁷ and polyanionic targets, like DNA^{18,19}. Various cells display receptors for C1q and help silent phagocytosis of apoptotic cells opsonized by C1q^{13,20,21}. The classical pathway of complement is activated, its components playing a hierarchical role in clearance²². Deposited C4 and C3 fragments are then recognized by the CR3 of myeloid cells, a receptor encoded by lupus susceptibility gene ITGAM. The allelic variant of CR3 associated with lupus shows impaired phagocytotic and adhesion function²³.

Hereditary complement deficiencies. Early complement components have long been known to play a key role in lupus development. Genetic deficiency of C1q is the strongest susceptibility factor for lupus²⁴, with close to 100% of the deficient subjects showing signs of the syndrome. Deficiency in the components involved in the later steps of classical pathway activation, C2 and C4, also predisposes to lupus development, albeit with lower probability. Interestingly, people with lupus show a secondary deficiency of these particular complement components suggesting the consumption of these proteins by factors playing a role in disease pathogenesis. These intriguing relations between complement and lupus have been discussed in depth by excellent reviews^{25,26}.

Complement deficiency due to consumption. Immunoglobulins undergo a conformational change upon antigen binding. This event coupled with immobilization and provision of affixed C1q binding sites promotes the binding of the C1 complex. The attachment of C1 will activate C1r and C1s, initiating the complement cascade²⁷. The fact that DNA specific immunoglobulins trigger complement activation to such an extent that the systemic consumption is measurable as decreased C4, C3 and CH50 levels has been known for decades²⁸. The measurement of these parameters forms part of the diagnostic routine even today, because secondary complement deficiency in lupus is associated with disease activity²⁹. Complement is also consumed by being deposited on blood cells in the circulation of lupus patients, a fact that is beginning to be exploited for diagnostic purposes³⁰.

Development of autoimmunity

Breaking of tolerance. Lymphocytes go through several checkpoints during their development, ensuring that self-reactivity is kept within a rational range³¹. The process results in immunological tolerance to self-antigens. Tolerance can be broken by increased load of apoptotic cell debris reaching the secondary lymphoid organs³², increased propensity for positive selection of B cells³³, the presence of molecular patterns in autoantigen that activates Toll-like receptors³⁴, the production of cytokines regulating B-cell development³⁵. The breaking of tolerance is characterized by the production of immunoglobulins specific for the autoantigens which induce autoimmunity, therefore these autoantibodies can be used as disease markers and also to identify the source of the autoantigens.

Development of autoantibodies. Once tolerance against self is broken, antibodies against various nuclear components appear, including various forms of DNA, RNA, nucleosome complexes and nuclear proteins³⁶. Autoantibodies are detectable before the clinical onset of SLE³⁷ and with the development of organ damage various specific autoantibodies appear in the circulation³⁸. These can involve various extractable nuclear antigens³⁹, phospholipids⁴⁰, complement proteins^{41,42} and even cytokines like BAFF⁴³. The composition of the immune complexes has important consequences regarding its cell activating properties: DNA in the immune complexes that are formed upon the production of IgG antibodies stimulates plasmacytoid dendritic cells, which in turn release type I interferons, promoting tissue injury⁴⁴. The antigen-driven development and appearance of high affinity double-stranded DNA specific IgG is considered a hallmark of systemic lupus erythematosus⁴⁵.

Vascular injury

Circulating immune complexes bind to vessel wall. In lupus, immune complexes are found in the circulation, attached to vessel walls and deposited perivascularly. Binding to capillary wall endothelium was shown to be dependent on the presence of C1q in the immune complexes C1q⁴⁶⁻⁴⁸. Thus, once immunity is triggered against autoantigens, the presence of both autoreactive IgG and autoantigen in the circulation will lead to the formation of C1q containing immune complexes. Circulating immune complexes with characteristic components are found in various autoimmune diseases⁴⁹.

Neutrophil granulocytes and FcγRs as effectors of inflammatory injury. Neutrophil granulocytes rolling along the vessel wall bind to the IgG component of deposited ICs via Fc gamma receptors. This binding, as modelled in our functional antibody assay⁵⁰, will trigger adhesion and activation of the cell. Neutrophil granulocytes secrete type I interferon and play important roles in the initiation and perpetuation of the disease⁵¹. Fc gamma receptors displayed by the granulocyte play intricate roles in the recognition and uptake of IgG immune complexes and the induction of NETosis⁵². Dysregulation of NET formation itself has also been suggested to play a role in lupus pathogenesis⁵³.

Endothelial cell (EC) dysfunction in lupus. Lupus patients have a high risk of developing cardiovascular disease. Endothelial dysfunction, one of the key factors of atherogenesis, can be triggered by various endothelium damaging factors present in lupus⁵⁴. The effects of cytokines, inflammatory cells and immune complexes are combined with compromised endothelial functions resulting in increased atherogenicity in lupus⁵⁴. Endothelial repair is also compromised by a decrease in the number of bone marrow derived endothelial cell progenitors⁵⁵. Interestingly, C1q and mannose binding lectin (MBL), recognition molecules of the classical and lectin pathways of complement activation, respectively, help remove atherogenic lipoproteins⁵⁶, establishing a link between C1q deficiency and cardiovascular disease development in lupus. Increased vascular endothelial permeability resulting in edema, infiltration of inflammatory cells and deposition of immune complexes are the commonly observed histological features of the disease.

Coagulation and thrombosis defects in lupus. SLE patients are susceptible to cardiovascular morbidity and mortality⁵⁷. Abnormal coagulation and thrombus formation is associated with the presence

of anti-phospholipid antibodies, exemplified by anti-cardiolipin, anti- β 2-glycoprotein and lupus anticoagulant antibodies⁵⁸. These autoantibodies have been suggested to directly cause endothelial injury or promote atherogenesis by altering lipoprotein metabolism⁵⁹.

The missing piece: molecules of innate immunity contribute to endothelial integrity

One important question that has been left largely unanswered so far is why and how exactly are the vascular wall and surrounding tissues damaged? How do the above named three main categories, impaired clearance, autoimmunity and vascular injury interact with each other? We propose that the answer lies in the protective role that innate clearance molecules play in endothelial renewal.

The globular head of complement C1q binds to negatively charged molecules like DNA⁶⁰ and cardiolipin¹⁷, and also to immunoglobulins mainly via ionic interactions⁶¹. C1q has also been shown to bind heparan sulfate⁶², a component of the extracellular matrix and of the surface structures of adherent cells⁶³. Thus, C1q beyond its role in the clearance of apoptotic cell debris could also be involved in endothelial cell interactions with the extracellular matrix. Indeed, C1q has been shown to play a role in vascular regeneration by binding to endothelial cells and promoting endothelial adhesion and spreading⁶⁴ and exert proangiogenic effects like stimulation of endothelial proliferation, migration and permeability⁶⁵. With these multiple roles of C1q in mind, we propose the following two scenarios, one describing events occurring in the presence of intact endothelium and another for leaky endothelium (Figure 2).

Proposed role of C1q in transendothelial transport

In a healthy adult male, the endothelium is quiescent⁶⁶. Significant amounts of C1q bind to EC only in tissues with discontinuous endothelium. Discontinuous endothelium is found at sites of transendothelial trafficking and is characterized by the fusion of the luminal and abluminal plasma membranes, the presence of pores of various diameters and high heparan sulfate content of the glycocalyx^{67,68}. Discontinuous endothelium is divided into sinusoidal and fenestrated types. Sinusoidal endothelium lines bone marrow sinuses, splenic and liver sinuses; fenestrated endothelium covers capillary walls in kidney glomeruli, in the gastrointestinal tract, in endocrine glands and in the choroid plexus⁶⁶. In healthy adult females of the childbearing

age the endothelium is subject to the effects of factors that regulate cyclic renewal of the endometrium, an event accompanied by vascular regeneration⁶⁹.

Where endothelium is discontinuous the glycocalyx becomes a major determinant of transendothelial traffic. The glycocalyx is a layer of macromolecules, mostly glycosaminoglycans, decorating the surface of ECs. Heparan sulfate constitutes more than 50% of the glycosaminoglycan pool in EC, localizing especially in cave-like structures (caveolae)⁷⁰ and the fenestrac⁶⁷, both areas playing primary roles in transendothelial transport and filtration, respectively. We envisage that C1q binds to heparan sulfate-rich regions on the luminal surface of EC and is also efficiently transported to the abluminal side into the tissues.

Proposed role of C1q in paracellular endothelial leakage

If the integrity of the endothelium is disrupted, the subendothelial lamina becomes exposed to the blood plasma. When ECs are in the process of cell division or death, large pores with diameters reaching 1 micrometer are formed in the endothelium, as a result of cellular discontinuity⁷¹. Upon exposure, subendothelial collagen immediately binds to several molecules from the blood plasma, triggering repair, coagulation and thrombocyte binding. This event remains silent as long as the endothelium is only modestly damaged. Even though the physiological turnover of EC is low⁷² subendothelial collagen can be exposed whenever and wherever endothelial cells die. The renewal process is restricted in time and space, unless massive endothelial cell apoptosis is triggered by external factors, such as UV radiation. C1q or C1q containing IC can pass through these leaky junctions and deposit in the extracellular matrix (ECM), where heparan sulfate is an essential proteoglycan component⁷³. Since C1q is an eat-me-silently signal for myeloid cells, as discussed above, C1q deposition protects these areas of endothelial regeneration from myeloid cell-mediated damage, until integrity is reconstituted.

Based on the above observations we hypothesize that sufficient amounts of free C1q should be available in the blood in order to maintain endothelial trafficking, integrity and renewal. Free serum C1q protects exposed collagen from triggering attachment, activation and extravasation of monocytes and neutrophil granulocytes during endothelial renewal.

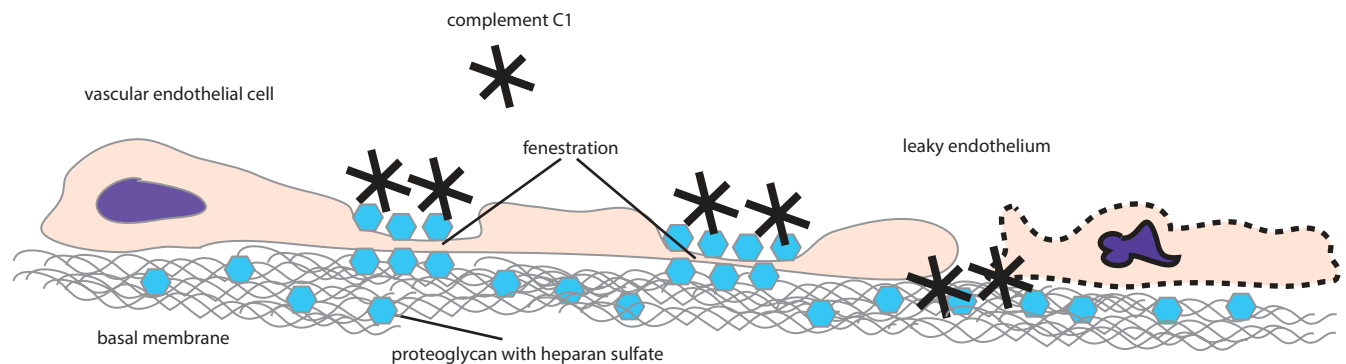


Figure 2. Interactions of C1q with the endothelium. Complement C1q binds to the negatively charged heparan sulfate-rich proteoglycans of the glycocalyx. At leaky endothelial junctions C1q will bind to the subendothelial basal membrane, where it promotes adhesion and regeneration.

Potential role of other molecules with similar binding pattern

However, C1q is actually not the only multivalent molecule which binds negatively charged moieties. In addition there is – at least – one other molecule with the ability to bind to apoptotic cells multivalently. Natural IgM (nIgM) molecules, which are produced without a clearly identifiable antigenic stimulus, have been shown to promote the clearance of apoptotic cells in mice⁷⁴ and enhance phagocytic clearance of host cells⁷⁵. IgM against dsDNA was shown to be protective in a murine autoimmune model⁷⁶. The general immunological protective properties of natural IgM were recently reviewed by Grönwall *et al.*^{77,78}. Anti-apoptotic cell IgM antibodies bind C1q and promote clearance by phagocytes⁷⁹. An interesting aspect of IgM is that it can bypass the classical activation pathway by binding MBL and induce C4b deposition via MASPs. MBL deficient mice displayed impaired apoptotic cell clearance, without overt signs of autoimmunity, suggesting an alternative role for clearance by the lectin pathway⁸⁰. Natural IgM binding and the ensuing events lead to the recognition and removal of apoptotic cells without activating the phagocytic cells⁷⁵. The fact that antibodies of the IgM class do bind to collagen and this binding is decreased in lupus patients has been reported^{6,81}. The question that remains to be answered is whether it is nIgM that binds to collagen. It is also intriguing whether other molecules of the innate humoral immune system, such as pentraxins and collectins may play similar roles.

In summary, multivalent molecules with a propensity to bind negatively charged targets and the ability to initiate complement activation are consumed by apoptotic cells, immune complexes, EC and the extracellular matrix. As long as these molecules are available in excess this competition will go unnoticed. Once this balance is tipped pathological events start to take place.

Putting the pieces together: the endothelial deprotection hypothesis

If C1q binds negatively charged molecules then those molecules compete for C1q binding. Competition for C1q binding by deoxyribose and heparan sulfate has been experimentally confirmed⁶². Thus, negatively charged components of the exposed nuclear content of dying cells and of the EC fenestrae or the exposed subendothelial matrix can all bind C1 complex from the circulation. Physiologically there is sufficient amount of C1 available and a balance exists between the vessel wall and cellular debris. This binding results in tightly controlled classical complement pathway activation, leading to the production of C4b. Other factors controlling complement activation also bind to negatively charged molecules; these include complement factor H, C4bBP⁸² amongst several other recognition molecules of the innate humoral immune system, like pentraxins⁸³ and surfactant proteins^{84,85}. These molecules regulate further activation of the complement cascade, the production of anaphylatoxins and the activation of surrounding and recruited cells. Opsonized apoptotic debris will therefore be silently removed by macrophages (Figure 3A). The fact that not only the absence of C1q but also functional C1q deficiency leads to lupus development⁸⁶ suggests that initiation of the classical pathway activation is required for the removal of cellular debris and prevention of development of immune complex disease.

This balanced binding to EC, subendothelial collagen and cellular debris can be tipped basically by three main factors: decrease

in C1q levels, increased load of apoptotic cells and increased collagen exposure. Genetic deficiency in C1q is accompanied by highly increased (more than 90%) likelihood of developing SLE⁸⁷. Increased cell death can be triggered by ionizing radiation or by drugs with cytotoxic effects⁸⁸. Inefficient phagocytic capacity of CR3 polymorphic variant r77h⁸⁹, a lupus susceptibility factor, may also increase apoptotic load. Increased collagen exposure can be the result of endothelial apoptosis induced by sunlight but physiological turnover of the endothelium is also accompanied by macromolecular permeability and access to the subendothelial lamina⁹⁰.

As a result of one or more of these factors, cellular debris will reach secondary lymphoid organs, triggering immunity against self-molecules, including DNA. IgM is first produced, which may help restore the balance by enhancing apoptotic debris removal via complement activation (Figure 3B). This is in agreement with the findings of Li *et al.*, who reported increased IgM reactivity to several autoantigens in patients with incomplete lupus erythematosus syndromes³⁶. The generation of DNA specific IgG further tips the balance towards opsonization of cellular debris, taking away more C1q, leaving exposed subendothelial collagen unprotected (Figure 3C). Furthermore, circulating complexes of nuclear material, IgG and C1q will bind to exposed collagen by nature of the multivalent C1q molecule and diffuse into the tissues. Alternatively, in organs with discontinuous endothelium, immune complexes will bind to the fenestrae and be transported into the tissue. Deposition of immune complexes containing IgG will trigger activation of monocytes and neutrophil granulocytes, attracted by C3 and C5 derived anaphylatoxins of the alternative pathway. This results in damage to the vessel wall itself, to increased permeability and to IgG-mediated damage to the tissues (Figure 3D).

To summarize, impaired clearance of cell debris and immune complexes together with pathological anti-nuclear antibodies consume C1q, an important vascular regeneration factor, from the circulation, by directing it to immune complexes and apoptotic cells. In turn, not free but immune complex-bound C1q will attach to EC and exposed subendothelial collagen. IgG will trigger inflammation instead of regeneration. According to this scenario, dsDNA IgG triggers inflammation, while dsDNA IgM can act against it, by competing with IgG for dsDNA binding. Indeed, the ratio of dsDNA IgG to IgM has been shown to be a good indicator of renal damage in SLE^{91,92}.

Interpreting the lupus syndrome in light of the hypothesis

Sex difference in susceptibility

Even though lupus can develop in both men and women, 90% of patients diagnosed with the disease are women, most of them being in the childbearing age⁹³. How hormones contribute to this skewed susceptibility is not defined. Our hypothesis emphasizes the role of vascular endothelial renewal in the pathogenesis of SLE, pointing to sex differences in angiogenesis.

In fact, angiogenesis is a critical component of endometrial renewal. Various hormones and growth factors interact during the formation of new vessels, including vascular endothelial growth factor (VEGF)^{69,94}. VEGF is produced in ovarian tissues during the menstrual cycle and regulates vascular remodeling and repair. VEGF is a permeability factor as well, its topical administration

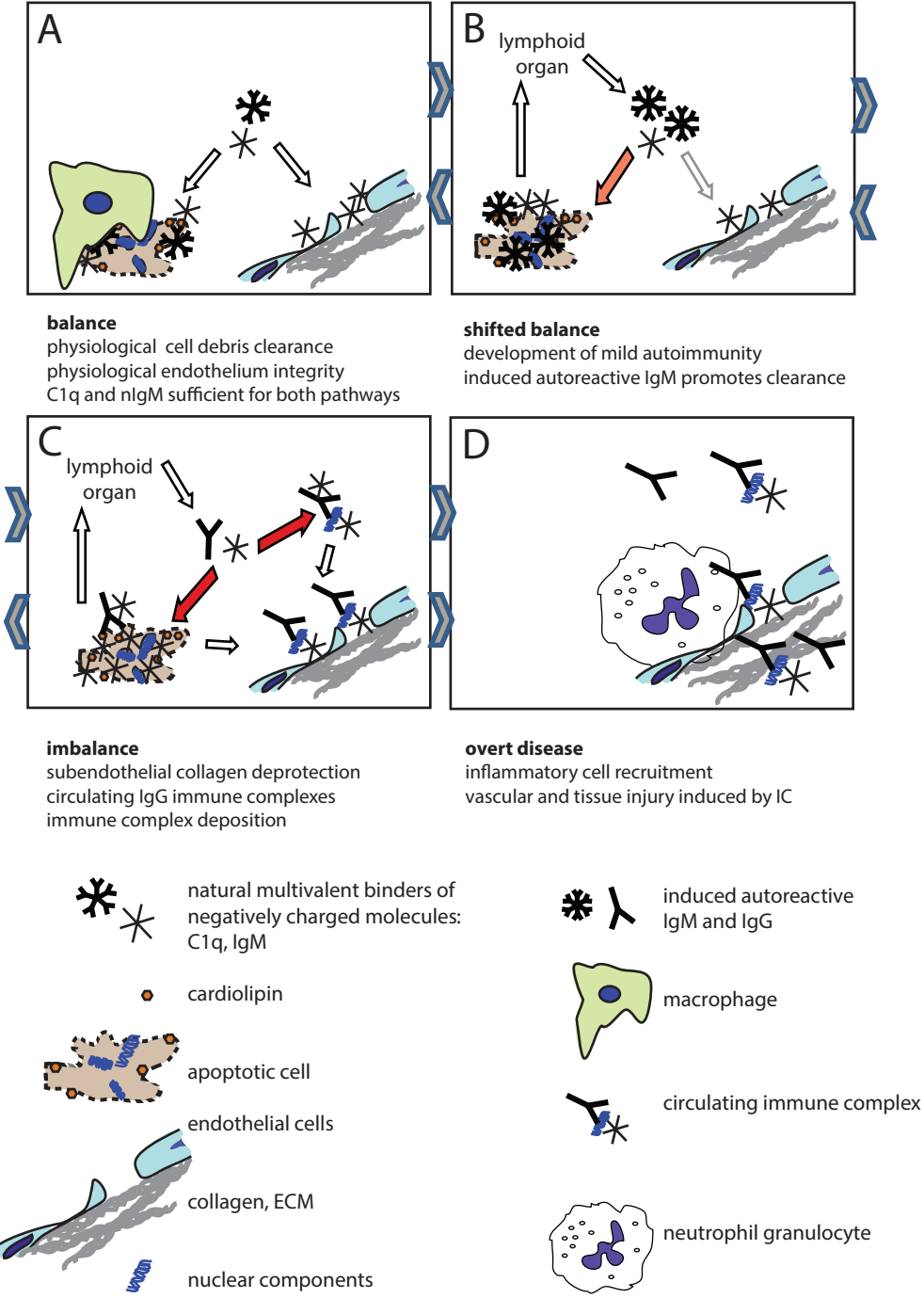


Figure 3. The endothelial deprotection hypothesis. Maintenance of endothelial integrity and clearance of cellular debris both requires multimeric innate molecules (C1q, nIgM) with the ability to bind anionic surfaces (A). C1q binds to fenestrated regions of the endothelial cell and to collagen exposed due to leaky endothelial junctions. Increased use of these innate molecules by the clearance mechanism, or deficiency of these molecules shifts this balance, which results in cellular debris reaching the lymphoid organs (B). This triggers the production of IgM against the autoantigens. Induced autoreactive IgM binds to apoptotic autoantigens, activates the complement system and promotes clearance. Sustained autoantigenic stimulus and genetically determined clearance deficiency coupled with tendency of mounting inflammatory immune responses will result in the production of IgG against the tissue derived autoantigens (C). Immune complexes containing IgG and C1q will bind to the vascular wall, since free C1q levels are low and circulating immune complexes will outcompete them. Deposited immune complexes containing IgG recruit white blood cells with Fc γ receptors, which can trigger cell activation, release of inflammatory cytokines, frustrated phagocytosis, NETosis (D). Immune complexes and autoantibodies can penetrate the tissues via the damaged endothelium, causing organ specific damage. Sustained inflammation leads to irreversible organ damage. Orange and red arrows indicate mild and strong redirection of C1q usage, respectively. Arrows in between figure boxes indicate reversibility (A-C) or irreversibility (C-D).

can induce the development of fenestrations in the endothelium of small venules and capillaries⁹⁵. Estradiol itself can also directly increase permeability⁹⁶ and act indirectly⁹⁷ by modulating VEGF production in endothelial cells. As highlighted above and further discussed below, fenestration, accessibility of the subendothelial lamina promotes the deposition of both bare C1q and nIgM and C1q containing immune complexes. This would render women of the childbearing age, with functioning ovaries, more susceptible to immune complex deposition and vascular damage in SLE.

Organ damage in SLE

Our hypothesis suggests that anatomical sites with discontinuous endothelium and tissues where collagen in the subendothelial lamina is exposed will be more vulnerable to immune complex induced damage. There is one more important aspect we have to consider: what is the source of the autoantigen that will induce autoimmunity? Keeping with the notion that in lupus it is the material from dead cells that induces autoimmune response we need to locate the source of apoptotic cells. Here we consider two main categories: cell death within the circulation and outside of the circulation (Figure 4). Within the circulation it is the corpuscles in the blood⁹⁸ and endothelial cells¹²

that are sources of cellular debris. Actually we will also consider the bone marrow as a source of apoptotic debris within the circulation because of the high rate of apoptotic death during lymphocyte development and the sinusoidal structure of the endothelium in the tissue. Apoptotic antigens within the circulation will be distributed by the blood flow throughout the body. Immune complexes formed from this material will be deposited anywhere where there is blood flow, and preferentially where blood flow is high, the endothelium is discontinuous and where subendothelial collagen is more accessible. We suggest that renal, bone marrow, joint, serosal and synovial, and partly skin damage in lupus is mediated by this route and constitutes the core components of SLE.

Apoptotic cells that come into contact with blood also initiate coagulation events⁹⁹. Therefore in addition to lipids that become exposed on apoptotic cells, phospholipid-binding proteins (β 2-glycoprotein) and components of the coagulation cascade will serve as autoantigens targeted by the immune response. Anti-cardiolipin antibodies and lupus anticoagulant could be produced as the result of these pathological events¹⁰⁰, and are responsible for the secondary antiphospholipid antibody syndrome in SLE.

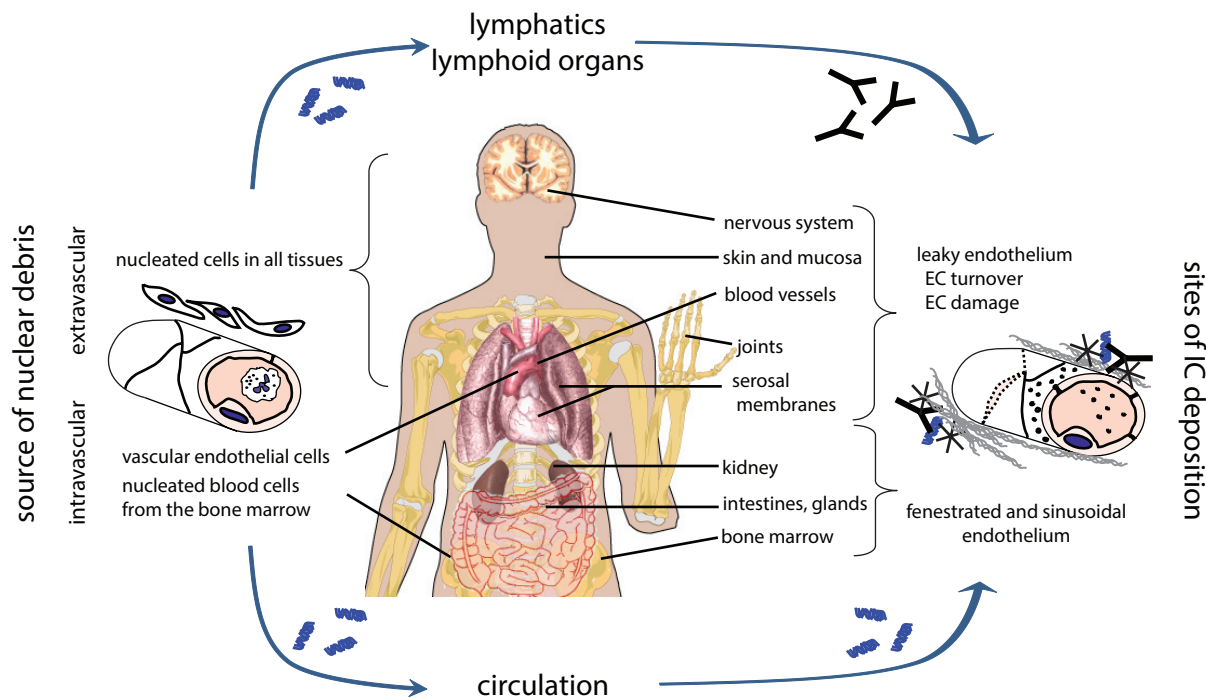


Figure 4. Endothelial deprotection and organ involvement in SLE. Apoptotic nuclear material can originate within the circulation or outside of the circulation. Apoptotic or apoptosis-prone nucleated blood cells can enter the blood stream from the bone marrow crossing the sinusoid endothelium. Endothelial cell apoptosis can be triggered by physical or pharmacological stimuli. These events result in circulating apoptotic debris load unless it is swiftly removed by physiological clearance pathways. Apoptotic debris outside of the circulation reaches the draining lymph nodes. Anti-nuclear antibody production is induced in the lymphoid organs when genetic and environmental susceptibility factors interact. Nuclear debris within the circulation is covered by various clearance molecules, including C1q. Anti-nuclear IgM and IgG modulates C1q deposition and complement activation. C1q promotes the deposition of nuclear immune complexes at sites where the endothelium is leaky or fenestrated. These surfaces are normally masked and covered by C1q and early complement activation products, along with other innate protection molecules, like nIgM. Overload of apoptotic debris can however consume these molecules, deprotecting the endothelium and opening the way for IgG Fc receptor mediated inflammation and tissue damage. While the endothelial lining of the liver is sinusoid, the lower blood pressure due to portal venous blood supply and the unique macrophages (Kupffer cells) of the liver seemingly prevent accumulation of IC. Source of body organ depictions: Wikimedia Commons.

Outside of the circulation, basically meaning in the tissues, apoptotic cells and their fragments and antigen presenting cells carrying and processing those will reach the secondary lymphoid organs first. Antibodies generated in the lymphoid organs will enter the circulation and immune complexes may or may not be formed, depending on the presence or absence of antigen. Once these autoantibodies appear, they could sustain organ specific damage and disease course by binding to their targets thanks to increased permeability by general impairment in endothelial regeneration.

Photosensitivity. Cutaneous manifestations of SLE are often linked to exposure to sunlight or artificial sources of ultraviolet (UV) light. Malar rash, the butterfly shaped erythematous lesion on the face is a classical sign of lupus. It may be present in about 50% of SLE patients at the time of the diagnosis¹⁰¹ and is part of the general photosensitivity observed in SLE. UV-light induced apoptosis of keratinocytes is thought to be a source of cellular debris that promotes the induction of rheumatic diseases¹⁰². Actually endothelial cells are quite sensitive to radiation-induced, ceramide-mediated apoptotic cell death¹⁰³⁻¹⁰⁵. We speculate that UV light penetrating the epidermis may cause endothelial damage in dermal capillaries. Dead endothelial cells will be removed inefficiently in the relative absence of C1q and nIgM, while the exposed subendothelial lamina will be less protected by these molecules. Increased paracellular leakage and transcellular trafficking in activated EC would result in increased deposition of IC, edema and extravasation of myeloid cells and the appearance of rash. Additionally, the entry of apoptotic endothelial cells¹² or their products containing nuclear material and proinflammatory mediators¹⁰⁶ into the circulation may contribute to disease flares triggered by UV exposure.

Renal involvement. SLE can lead to the development of lupus nephritis, which is one of the most disabling complications¹⁰⁷. The kidneys are prone to immune complex mediated damage for at least two reasons. It is the organ with the second highest blood flow rate¹⁰⁸ and the endothelium is fenestrated, leaving access to C1q bearing immune complexes. Apoptotic debris that is generated within the circulation or enters the circulation will have a very high chance of ending up in the glomeruli. Should these complexes contain IgG, the necessary component for triggering inflammation will be present. Other factors, such as DNase activity may modulate the severity and prognosis of nephritis¹⁰⁹.

Synovitis and serositis. Besides ionizing radiation mechanical injuries may also negatively influence endothelial integrity. Synovial and serosal membranes are rich with blood circulation and are continuously exposed to micromechanical injuries due to the movement of the joints and inner organs, respectively. We suggest that the healing of these microinjured sites would be slower and accompanied by edema and cellular infiltration, because of the deposition of circulating immune complexes. These microinjuries may therefore be responsible for arthritis, pleuritis and pericarditis in SLE (Figure 4).

Bone marrow involvement. The bone marrow is a site of intensive cell proliferation and cell death. Lymphocyte development involves selection steps when useless or harmful clones are deleted by programmed cell death. Any defect in the clearance of apoptotic cells is therefore expected to influence homeostasis in this tissue. Additionally, it is a site where there is intensive migration via the endothelial

layer in both directions, facilitated by a special endothelial structure: the sinusoidal endothelium. We suggest that this tissue would be vulnerable to immune complex deposition and inflammation. In SLE patients abnormal bone marrow histology is observed¹¹⁰. Comparative analysis of gene expression revealed upregulation of genes involved in cell death and granulopoiesis in active SLE patients, confirming the role of apoptosis and granulocytes in the pathogenesis of the disease¹¹¹. We suggest that cytopenias, the detection of which constitute pillars of the diagnostic algorithm of SLE², are the consequence of abnormal bone marrow function, in addition to specific antibody mediated direct damage.

Consequences for diagnostic efforts

Classification of systemic lupus erythematosus relies on clinical examination, hematological tests and serological test. The presence of dsDNA specific IgG is quite specific but less sensitive for the identification of SLE patients⁶. Decreased complement levels and complement activity are also used but not specific for the disease. Indeed our hypothesis suggests that there is no single protein marker, which could be used alone, because a state of imbalance can only be assessed by the measurement of the different components characterizing the degree of imbalance. The measurement of free C1q or C1 complex and also of nIgM could be assessed for incorporation into the set of laboratory tests characterizing autoimmune conditions. Alternatively, instead of measuring the levels of individual proteins, a functional test that is capable of gauging the degree of endothelial damage, the propensity of immune complex deposition and inflammatory cell reactions all together, could be used for assisting diagnosis.

Implications for future therapy and prevention of SLE

The causal therapy for lupus, based on the endothelial deprotection hypothesis, would be the restoration of endothelial integrity by the introduction or induction of C1q or nIgM. In the case of genetic C1q deficiency replacement therapy seems to be the logical solution¹¹². Indeed, hematopoietic stem cell transplantation was recently shown to be successful treatment for hereditary C1q immunodeficiency¹¹³. For replacement therapy the administration of C1q or natural IgM is a potential solution. Immunoglobulin preparations for high dose intravenous immunoglobulin therapy contain mainly IgG and exert their effects via pathways related to IgG. However, successful management of SLE with IgM enriched intravenous immunoglobulin (IVIg) has also been reported¹¹⁴, providing support for the beneficial role of nIgM.

It is tempting to speculate that the production of natural IgM, endothelial turnover and integrity and innate clearance are influenced by environmental factors such as nutrition and lifestyle^{115,116} or factors produced by the mucosal microbiome, like vitamin K¹¹⁷. If so, we could even look for prevention strategies in light of this hypothesis. The relatively low concordance of SLE in monozygotic twins¹¹⁸ implies that there is ample room for the modulation of environmental effects.

Concluding remarks and future directions

We propose an interaction scheme for SLE pathogenesis with three key components, each of these contributing to disease development by their mutual interactions (Figure 5). These components are innate immune clearance, adaptive immune response quality and

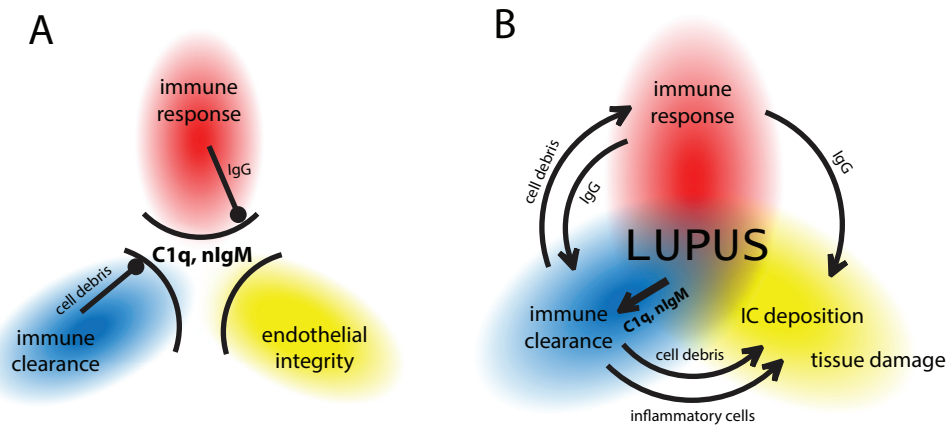


Figure 5. The lupus triangle in health and disease. C1q and natural IgM are gatekeepers that ensure innate immune clearance of apoptotic cellular debris and immune complexes, and also maintain endothelial integrity (A). Under physiological conditions these processes do not interfere with each other. Major abnormality in one or more of these processes, or combinations of minor abnormalities lead to imbalance, consumption of the gatekeepers, the breakdown of these gates and the development of lupus erythematosus (B). Depending on the contribution of these factors lupus will have different colors and shades, which define distinct disease entities or subtypes within such entities.

endothelial integrity. The endothelial deprotection hypothesis assumes that the mechanisms of innate clearance and endothelial integrity share molecules like C1q and nIgM, therefore the two systems can interfere. We suggest that SLE is the net result of an imbalance between these two systems, which is aggravated by the development of autoreactive antibodies, leading to the leakage of immune complexes from the circulation and the triggering of inflammation in the vessel walls and in the tissues.

It will be imperative to create sets and networks of genetic factors that underlie these events and upon that superimpose the protein interactions to create a framework for further interpretation of cellular and immunological processes leading to various forms and manifestations of lupus. We speculate that other systemic autoimmune diseases will share some of these components while also possessing distinct other susceptibility factors to create a continuum of diseases with overlaps. We hope that this hypothesis will serve the further understanding of lupus and these other related diseases as well, leading to novel medical approaches and improvement in the quality of life of all those suffering from these conditions.

Author contributions

JP developed the theoretical part of the hypothesis, LC supervised clinical aspects of the studies leading to this hypothesis and also clinical aspects of the hypothesis itself. Both authors contributed to the writing and agreed to the final content of the manuscript.

Competing interests

Diagnostic and MTA-TKI, the employers of JP, are the licensor/owner of a patent on measuring complement activation on microarrays and owners of a patent application on the assessment of immunological reactivity using cell-based functional assays.

Grant information

The project that helped the development of this hypothesis was funded by the European Union Seventh Framework Programme FP7/2007–2013 under grant agreement n° 314971 (GAPAID-314971, FP7-SME-2012), entitled ‘Genes and proteins for autoimmunity diagnostics’ and by support from the National Science Fund to JP, grant number K109683 and to LC, grant number K 112939.

I confirm that the funders had no role in study design, data collection and analysis, decision to publish, or preparation of the manuscript.

Acknowledgements

This theoretical work is dedicated to János Gergely who dreamed about finding a treatment for systemic autoimmune diseases. I wish to thank Anna Erdei who established the complement study group at the department, which I joined 17 years ago, for planting the seeds of complement science in me. Krisztián Papp helped me in setting up the protein microarray group and the development of functional antibody profiling technology, which played key role in developing this hypothesis. I thank my wife for her patience and critical comments on this work. Last but not least, I wish to express my gratitude to Ferenc Péterfy and Klára Rásky, whose trust and experience helped our work ever since we started studying autoimmunity.

While we strived to introduce to the reader most of the aspects, theories and thereby research groups who contributed to the understanding of lupus, considering the breadth of this field and the huge number of publications it is practically impossible to provide a complete overview within the frame of this hypothesis. We acknowledge the work of all those, whose work could not be included in this short paper.

References

1. Urowitz MB, Gladman DD, Ibañez D, *et al.*: **American College of Rheumatology criteria at inception, and accrual over 5 years in the SLICC inception cohort.** *J Rheumatol.* 2014; **41**(5): 875–80.
[PubMed Abstract](#) | [Publisher Full Text](#)
2. Hochberg MC: **Updating the American College of Rheumatology revised criteria for the classification of systemic lupus erythematosus.** *Arthritis Rheum.* 1997; **40**(9): 1725.
[PubMed Abstract](#) | [Publisher Full Text](#)
3. Petri M, Orbai AM, Alarcón GS, *et al.*: **Derivation and validation of the Systemic Lupus International Collaborating Clinics classification criteria for systemic lupus erythematosus.** *Arthritis Rheum.* 2012; **64**(8): 2677–86.
[PubMed Abstract](#) | [Publisher Full Text](#) | [Free Full Text](#)
4. Prechl J, Papp K, Erdei A: **Antigen microarrays: descriptive chemistry or functional immunomics?** *Trends Microbiol.* 2010; **31**(4): 133–7.
[PubMed Abstract](#) | [Publisher Full Text](#)
5. Prechl J, Sztitner Z, Papp K: **Complementing antibody profiles: assessing antibody function on antigen microarrays.** *Immunol Lett.* 2012; **143**(1): 101–5.
[PubMed Abstract](#) | [Publisher Full Text](#)
6. Papp K, Végh P, Hóbor R, *et al.*: **Immune complex signatures of patients with active and inactive SLE revealed by multiplex protein binding analysis on antigen microarrays.** *PLoS One.* 2012; **7**(9): e44824.
[PubMed Abstract](#) | [Publisher Full Text](#) | [Free Full Text](#)
7. Perry D, Sang A, Yin Y, *et al.*: **Murine models of systemic lupus erythematosus.** *J Biomed Biotechnol.* 2011; **2011**: 271694.
[PubMed Abstract](#) | [Publisher Full Text](#) | [Free Full Text](#)
8. Teachey DT, Seif AE, Grupp SA: **Advances in the management and understanding of autoimmune lymphoproliferative syndrome (ALPS).** *Br J Haematol.* 2010; **148**(2): 205–16.
[PubMed Abstract](#) | [Publisher Full Text](#) | [Free Full Text](#)
9. Shoshan Y, Shapira I, Toubi E, *et al.*: **Accelerated Fas-mediated apoptosis of monocytes and maturing macrophages from patients with systemic lupus erythematosus: relevance to *in vitro* impairment of interaction with IC3b-opsonized apoptotic cells.** *J Immunol.* 2001; **167**(10): 5963–9.
[PubMed Abstract](#) | [Publisher Full Text](#)
10. Courtney PA, Crockard AD, Williamson K, *et al.*: **Increased apoptotic peripheral blood neutrophils in systemic lupus erythematosus: relations with disease activity, antibodies to double stranded DNA, and neutropenia.** *Ann Rheum Dis.* 1999; **58**(5): 309–14.
[PubMed Abstract](#) | [Publisher Full Text](#) | [Free Full Text](#)
11. Chan EY, Ko SC, Lau CS: **Increased rate of apoptosis and decreased expression of bcl-2 protein in peripheral blood lymphocytes from patients with active systemic lupus erythematosus.** *Asian Pac J Allergy Immunol.* 1997; **15**(1): 3–7.
[PubMed Abstract](#)
12. Kluz J, Kopeć W, Jakobsche-Policht U, *et al.*: **Circulating endothelial cells, endothelial apoptosis and soluble markers of endothelial dysfunction in patients with systemic lupus erythematosus-related vasculitis.** *Int Angiol.* 2009; **28**(3): 192–201.
[PubMed Abstract](#)
13. Benoit ME, Clarke EV, Morgado P, *et al.*: **Complement protein C1q directs macrophage polarization and limits inflammasome activity during the uptake of apoptotic cells.** *J Immunol.* 2012; **188**(11): 5682–93.
[PubMed Abstract](#) | [Publisher Full Text](#) | [Free Full Text](#)
14. Kruse K, Janko C, Urbonaviciute V, *et al.*: **Inefficient clearance of dying cells in patients with SLE: anti-dsDNA autoantibodies, MFG-E8, HMGB-1 and other players.** *Apoptosis.* 2010; **15**(9): 1098–113.
[PubMed Abstract](#) | [Publisher Full Text](#)
15. Radic M, Marion T, Monestier M: **Nucleosomes are exposed at the cell surface in apoptosis.** *J Immunol.* 2004; **172**(11): 6692–700.
[PubMed Abstract](#) | [Publisher Full Text](#)
16. Radic M: **Clearance of Apoptotic Bodies, NETs, and Biofilm DNA: Implications for Autoimmunity.** *Front Immunol.* 2014; **5**: 365.
[PubMed Abstract](#) | [Publisher Full Text](#) | [Free Full Text](#)
17. Tan LA, Yu B, Sim FC, *et al.*: **Complement activation by phospholipids: the interplay of factor H and C1q.** *Protein Cell.* 2010; **1**(11): 1033–49.
[PubMed Abstract](#) | [Publisher Full Text](#)
18. Van Schravendijk MR, Dwek RA: **Interaction of C1q with DNA.** *Mol Immunol.* 1982; **19**(9): 1179–87.
[PubMed Abstract](#) | [Publisher Full Text](#)
19. Farrera C, Fadel B: **Macrophage clearance of neutrophil extracellular traps is a silent process.** *J Immunol.* 2013; **191**(5): 2647–56.
[PubMed Abstract](#) | [Publisher Full Text](#)
20. Ramirez-Ortiz ZG, Pendergraft WF 3rd, Prasad A, *et al.*: **The scavenger receptor SCARF1 mediates the clearance of apoptotic cells and prevents autoimmunity.** *Nat Immunol.* 2013; **14**(9): 917–26.
[PubMed Abstract](#) | [Publisher Full Text](#) | [Free Full Text](#)
21. Prabagar MG, Do Y, Ryu S, *et al.*: **SIGN-R1, a C-type lectin, enhances apoptotic cell clearance through the complement deposition pathway by interacting with C1q in the spleen.** *Cell Death Differ.* 2013; **20**(4): 535–45.
[PubMed Abstract](#) | [Publisher Full Text](#) | [Free Full Text](#)
22. Taylor PR, Carugati A, Fadok VA, *et al.*: **A hierarchical role for classical pathway complement proteins in the clearance of apoptotic cells *in vivo*.** *J Exp Med.* 2000; **192**(3): 359–66.
[PubMed Abstract](#) | [Publisher Full Text](#) | [Free Full Text](#)
23. Hom G, Graham RR, Modrek B, *et al.*: **Association of systemic lupus erythematosus with *C8orf13-BLK* and *ITGAM-ITGAX*.** *N Engl J Med.* 2008; **358**(9): 900–9.
[PubMed Abstract](#) | [Publisher Full Text](#)
24. Nishino H, Shibuya K, Nishida Y, *et al.*: **Lupus erythematosus-like syndrome with selective complete deficiency of C1q.** *Ann Intern Med.* 1981; **95**(3): 322–4.
[PubMed Abstract](#) | [Publisher Full Text](#)
25. Pickering MC, Botto M, Taylor PR, *et al.*: **Systemic lupus erythematosus, complement deficiency, and apoptosis.** *Adv Immunol.* 2000; **76**: 227–324.
[PubMed Abstract](#) | [Publisher Full Text](#)
26. Leffler J, Bengtsson AA, Blom AM: **The complement system in systemic lupus erythematosus: an update.** *Ann Rheum Dis.* 2014; **73**(9): 1601–6.
[PubMed Abstract](#) | [Publisher Full Text](#)
27. Venkatraman Girija U, Gingras AR, Marshall JE, *et al.*: **Structural basis of the C1q/C1s interaction and its central role in assembly of the C1 complex of complement activation.** *Proc Natl Acad Sci U S A.* 2013; **110**(34): 13916–20.
[PubMed Abstract](#) | [Publisher Full Text](#) | [Free Full Text](#)
28. Davis P, Cumming RH, Verrier-Jones J: **Relationship between anti-DNA antibodies complement consumption and circulating immune complexes in systemic lupus erythematosus.** *Clin Exp Immunol.* 1977; **28**(2): 226–32.
[PubMed Abstract](#) | [Free Full Text](#)
29. Julkunen H, Ekblom-Kullberg S, Miettinen A: **Nonrenal and renal activity of systemic lupus erythematosus: a comparison of two anti-C1q and five anti-dsDNA assays and complement C3 and C4.** *Rheumatol Int.* 2012; **32**(8): 2445–51.
[PubMed Abstract](#) | [Publisher Full Text](#)
30. Putterman C, Furie R, Ramsey-Goldman R, *et al.*: **Cell-bound complement activation products in systemic lupus erythematosus: comparison with anti-double-stranded DNA and standard complement measurements.** *Lupus Sci Med.* 2014; **1**(1): e000056.
[PubMed Abstract](#) | [Publisher Full Text](#) | [Free Full Text](#)
31. Goodnow CC, Sprent J, Fazekas de St Groth B, *et al.*: **Cellular and genetic mechanisms of self tolerance and autoimmunity.** *Nature.* 2005; **435**(7042): 590–7.
[PubMed Abstract](#) | [Publisher Full Text](#)
32. Pieterse E, van der Vlag J: **Breaking immunological tolerance in systemic lupus erythematosus.** *Front Immunol.* 2014; **5**: 164.
[PubMed Abstract](#) | [Publisher Full Text](#) | [Free Full Text](#)
33. Eilat D, Wabl M: **B cell tolerance and positive selection in lupus.** *J Immunol.* 2012; **189**(2): 503–9.
[PubMed Abstract](#) | [Publisher Full Text](#) | [Free Full Text](#)
34. Kono DH, Haraldsson MK, Lawson BR, *et al.*: **Endosomal TLR signaling is required for anti-nucleic acid and rheumatoid factor autoantibodies in lupus.** *Proc Natl Acad Sci U S A.* 2009; **106**(29): 12061–6.
[PubMed Abstract](#) | [Publisher Full Text](#) | [Free Full Text](#)
35. Dorner T, Putterman C: **B cells, BAFF/TNF4, TACI, and systemic lupus erythematosus.** *Arthritis Res.* 2001; **3**(4): 197–9.
[PubMed Abstract](#) | [Publisher Full Text](#) | [Free Full Text](#)
36. Li QZ, Zhou J, Wandstrat AE, *et al.*: **Protein array autoantibody profiles for insights into systemic lupus erythematosus and incomplete lupus syndromes.** *Clin Exp Immunol.* 2007; **147**(1): 60–70.
[PubMed Abstract](#) | [Publisher Full Text](#) | [Free Full Text](#)
37. Arbuckle MR, McClain MT, Rubertone MV, *et al.*: **Development of autoantibodies before the clinical onset of systemic lupus erythematosus.** *N Engl J Med.* 2003; **349**(16): 1526–33.
[PubMed Abstract](#) | [Publisher Full Text](#)
38. Li QZ, Xie C, Wu T, *et al.*: **Identification of autoantibody clusters that best predict lupus disease activity using glomerular proteome arrays.** *J Clin Invest.* 2005; **115**(12): 3428–39.
[PubMed Abstract](#) | [Publisher Full Text](#) | [Free Full Text](#)
39. Fredi M, Cavazzana I, Quinzani M, *et al.*: **Rare autoantibodies to cellular antigens in systemic lupus erythematosus.** *Lupus.* 2014.
[PubMed Abstract](#) | [Publisher Full Text](#)
40. McClain MT, Arbuckle MR, Heinlen LD, *et al.*: **The prevalence, onset, and clinical significance of antiphospholipid antibodies prior to diagnosis of systemic lupus erythematosus.** *Arthritis Rheum.* 2004; **50**(4): 1226–32.
[PubMed Abstract](#) | [Publisher Full Text](#)
41. Meszaros T, Füst G, Farkas H, *et al.*: **C1-inhibitor autoantibodies in SLE.** *Lupus.* 2010; **19**(5): 634–8.
[PubMed Abstract](#) | [Publisher Full Text](#)
42. Horvath L, Czirják L, Fekete B, *et al.*: **High levels of antibodies against C1q are associated with disease activity and nephritis but not with other organ manifestations in SLE patients.** *Clin Exp Rheumatol.* 2001; **19**(6): 667–72.
[PubMed Abstract](#)
43. Price JV, Haddon DJ, Kemmer D, *et al.*: **Protein microarray analysis reveals BAFF-binding autoantibodies in systemic lupus erythematosus.** *J Clin Invest.* 2013; **123**(12): 5135–45.
[PubMed Abstract](#) | [Publisher Full Text](#) | [Free Full Text](#)

44. Ardoin SP, Pisetsky DS: **Developments in the scientific understanding of lupus.** *Arthritis Res Ther.* 2008; **10**(5): 218.
[PubMed Abstract](#) | [Publisher Full Text](#) | [Free Full Text](#)
45. Nossent HC, Rekvig OP: **Is closer linkage between systemic lupus erythematosus and anti-double-stranded DNA antibodies a desirable and attainable goal?** *Arthritis Res Ther.* 2005; **7**(2): 85–7.
[PubMed Abstract](#) | [Publisher Full Text](#) | [Free Full Text](#)
46. Stokol T, O'Donnell P, Xiao L, *et al.*: **C1q governs deposition of circulating immune complexes and leukocyte Fcγ receptors mediate subsequent neutrophil recruitment.** *J Exp Med.* 2004; **200**(7): 835–46.
[PubMed Abstract](#) | [Publisher Full Text](#) | [Free Full Text](#)
47. Tan Y, Song D, Wu LH, *et al.*: **Serum levels and renal deposition of C1q complement component and its antibodies reflect disease activity of lupus nephritis.** *BMC Nephrol.* 2013; **14**: 63.
[PubMed Abstract](#) | [Publisher Full Text](#) | [Free Full Text](#)
48. Daha MR, Miltenburg AM, Hiemstra PS, *et al.*: **The complement subcomponent C1q mediates binding of immune complexes and aggregates to endothelial cells *in vitro*.** *Eur J Immunol.* 1988; **18**(5): 783–7.
[PubMed Abstract](#) | [Publisher Full Text](#)
49. Ohyama K, Baba M, Tamai M, *et al.*: **Proteomic profiling of antigens in circulating immune complexes associated with each of seven autoimmune diseases.** *Clin Biochem.* 2015; **48**(3): 181–5.
[PubMed Abstract](#) | [Publisher Full Text](#)
50. Szittner Z, Papp K, Sándor N, *et al.*: **Application of fluorescent monoclonal antibodies for probing immune complexes on antigen microarrays.** *PLoS One.* 2013; **8**(9): e72401.
[PubMed Abstract](#) | [Publisher Full Text](#) | [Free Full Text](#)
51. Kaplan MJ: **Neutrophils in the pathogenesis and manifestations of SLE.** *Nat Rev Rheumatol.* 2011; **7**(12): 691–9.
[PubMed Abstract](#) | [Publisher Full Text](#) | [Free Full Text](#)
52. Chen K, Nishi H, Travers R, *et al.*: **Endocytosis of soluble immune complexes leads to their clearance by FcγRIIIB but induces neutrophil extracellular traps via FcγRIIA *in vivo*.** *Blood.* 2012; **120**(22): 4421–31.
[PubMed Abstract](#) | [Publisher Full Text](#) | [Free Full Text](#)
53. Villanueva E, Yalavarthi S, Berthier CC, *et al.*: **Netting neutrophils induce endothelial damage, infiltrate tissues, and expose immunostimulatory molecules in systemic lupus erythematosus.** *J Immunol.* 2011; **187**(1): 538–52.
[PubMed Abstract](#) | [Publisher Full Text](#) | [Free Full Text](#)
54. Mak A, Kow NY: **Imbalance between endothelial damage and repair: a gateway to cardiovascular disease in systemic lupus erythematosus.** *Biomed Res Int.* 2014; **2014**: 178721.
[PubMed Abstract](#) | [Publisher Full Text](#) | [Free Full Text](#)
55. Westerweel PE, Luijten RK, Hoefler IE, *et al.*: **Haematopoietic and endothelial progenitor cells are deficient in quiescent systemic lupus erythematosus.** *Ann Rheum Dis.* 2007; **66**(7): 865–70.
[PubMed Abstract](#) | [Publisher Full Text](#) | [Free Full Text](#)
56. Fraser DA, Tenner AJ: **Innate immune proteins C1q and mannan-binding lectin enhance clearance of atherogenic lipoproteins by human monocytes and macrophages.** *J Immunol.* 2010; **185**(7): 3932–9.
[PubMed Abstract](#) | [Publisher Full Text](#) | [Free Full Text](#)
57. Esdaile JM, Abrahamowicz M, Grodzicky T, *et al.*: **Traditional Framingham risk factors fail to fully account for accelerated atherosclerosis in systemic lupus erythematosus.** *Arthritis Rheum.* 2001; **44**(10): 2331–7.
[PubMed Abstract](#) | [Publisher Full Text](#)
58. Sallai KK, Nagy E, Bodó I, *et al.*: **Thrombosis risk in systemic lupus erythematosus: the role of thrombophilic risk factors.** *Scand J Rheumatol.* 2007; **36**(3): 198–205.
[PubMed Abstract](#) | [Publisher Full Text](#)
59. Narshi CB, Giles IP, Rahman A: **The endothelium: an interface between autoimmunity and atherosclerosis in systemic lupus erythematosus?** *Lupus.* 2011; **20**(1): 5–13.
[PubMed Abstract](#) | [Publisher Full Text](#)
60. Peltier AP, Cyna L, Dryll A: **'*In vitro*' study of a reaction between the complement system and cellular DNA.** *Immunology.* 1978; **35**(5): 779–84.
[PubMed Abstract](#) | [Free Full Text](#)
61. Kishore U, Gupta SK, Perdikoulis MV, *et al.*: **Modular organization of the carboxyl-terminal, globular head region of human C1q, A, B, and C chains.** *J Immunol.* 2003; **171**(2): 812–20.
[PubMed Abstract](#) | [Publisher Full Text](#)
62. Garlatti V, Chouquet A, Lunardi T, *et al.*: **Cutting edge: C1q binds deoxyribose and heparan sulfate through neighboring sites of its recognition domain.** *J Immunol.* 2010; **185**(2): 808–12.
[PubMed Abstract](#) | [Publisher Full Text](#)
63. Bernfield M, Götte M, Park PW, *et al.*: **Functions of cell surface heparan sulfate proteoglycans.** *Annu Rev Biochem.* 1999; **68**: 729–77.
[PubMed Abstract](#) | [Publisher Full Text](#)
64. Feng X, Tonnesen MG, Peerschke EI, *et al.*: **Cooperation of C1q receptors and integrins in C1q-mediated endothelial cell adhesion and spreading.** *J Immunol.* 2002; **168**(5): 2441–8.
[PubMed Abstract](#) | [Publisher Full Text](#)
65. Bossi F, Tripodo C, Rizzi L, *et al.*: **C1q as a unique player in angiogenesis with therapeutic implication in wound healing.** *Proc Natl Acad Sci U S A.* 2014; **111**(11): 4209–14.
[PubMed Abstract](#) | [Publisher Full Text](#) | [Free Full Text](#)
66. Risau W: **Differentiation of endothelium.** *FASEB J.* 1995; **9**(10): 926–33.
[PubMed Abstract](#)
67. Simionescu M, Simionescu N, Silbert JE, *et al.*: **Differentiated microdomains on the luminal surface of the capillary endothelium. II. Partial characterization of their anionic sites.** *J Cell Biol.* 1981; **90**(3): 614–21.
[PubMed Abstract](#) | [Publisher Full Text](#) | [Free Full Text](#)
68. Netelenbos T, Dräger AM, van het Hof B, *et al.*: **Differences in sulfation patterns of heparan sulfate derived from human bone marrow and umbilical vein endothelial cells.** *Exp Hematol.* 2001; **29**(7): 884–93.
[PubMed Abstract](#) | [Publisher Full Text](#)
69. Molskness TA, Stouffer RL, Burry KA, *et al.*: **Circulating levels of free and total vascular endothelial growth factor (VEGF)-A, soluble VEGF receptors-1 and -2, and angiogenin during ovarian stimulation in non-human primates and women.** *Hum Reprod.* 2004; **19**(4): 822–30.
[PubMed Abstract](#) | [Publisher Full Text](#)
70. Tarbell JM: **Shear stress and the endothelial transport barrier.** *Cardiovasc Res.* 2010; **87**(2): 320–30.
[PubMed Abstract](#) | [Publisher Full Text](#) | [Free Full Text](#)
71. Weinbaum S, Tzeghai G, Ganatos P, *et al.*: **Effect of cell turnover and leaky junctions on arterial macromolecular transport.** *Am J Physiol.* 1985; **248**(6 Pt 2): H945–60.
[PubMed Abstract](#)
72. Woywodt A, Bahlmann FH, De Groot K, *et al.*: **Circulating endothelial cells: life, death, detachment and repair of the endothelial cell layer.** *Nephrol Dial Transplant.* 2002; **17**(10): 1728–30.
[PubMed Abstract](#) | [Publisher Full Text](#)
73. Poole AR: **Proteoglycans in health and disease: structures and functions.** *Biochem J.* 1986; **236**(1): 1–14.
[PubMed Abstract](#) | [Free Full Text](#)
74. Notley CA, Brown MA, Wright GP, *et al.*: **Natural IgM is required for suppression of inflammatory arthritis by apoptotic cells.** *J Immunol.* 2011; **186**(8): 4967–72.
[PubMed Abstract](#) | [Publisher Full Text](#)
75. Chen Y, Khanna S, Goodyear CS, *et al.*: **Regulation of dendritic cells and macrophages by an anti-apoptotic cell natural antibody that suppresses TLR responses and inhibits inflammatory arthritis.** *J Immunol.* 2009; **183**(2): 1346–59.
[PubMed Abstract](#) | [Publisher Full Text](#) | [Free Full Text](#)
76. Werwitzke S, Trick D, Kamino K, *et al.*: **Inhibition of lupus disease by anti-double-stranded DNA antibodies of the IgM isotype in the (NZB x NZW)F1 mouse.** *Arthritis Rheum.* 2005; **52**(11): 3629–38.
[PubMed Abstract](#) | [Publisher Full Text](#)
77. Vas J, Gronwall C, Silverman GJ: **Fundamental roles of the innate-like repertoire of natural antibodies in immune homeostasis.** *Front Immunol.* 2013; **4**: 4.
[PubMed Abstract](#) | [Publisher Full Text](#) | [Free Full Text](#)
78. Gronwall C, Vas J, Silverman GJ: **Protective Roles of Natural IgM Antibodies.** *Front Immunol.* 2012; **3**: 66.
[PubMed Abstract](#) | [Publisher Full Text](#) | [Free Full Text](#)
79. Chen Y, Park YB, Patel E, *et al.*: **IgM antibodies to apoptosis-associated determinants recruit C1q and enhance dendritic cell phagocytosis of apoptotic cells.** *J Immunol.* 2009; **182**(10): 6031–43.
[PubMed Abstract](#) | [Publisher Full Text](#)
80. Stuart LM, Takahashi K, Shi L, *et al.*: **Mannose-binding lectin-deficient mice display defective apoptotic cell clearance but no autoimmune phenotype.** *J Immunol.* 2005; **174**(6): 3220–6.
[PubMed Abstract](#) | [Publisher Full Text](#)
81. Fattal I, Shental N, Mevorach D, *et al.*: **An antibody profile of systemic lupus erythematosus detected by antigen microarray.** *Immunology.* 2010; **130**(3): 337–43.
[PubMed Abstract](#) | [Publisher Full Text](#) | [Free Full Text](#)
82. Trouw LA, Bengtsson AA, Gelderman KA, *et al.*: **C4b-binding protein and factor H compensate for the loss of membrane-bound complement inhibitors to protect apoptotic cells against excessive complement attack.** *J Biol Chem.* 2007; **282**(39): 28540–8.
[PubMed Abstract](#) | [Publisher Full Text](#)
83. Lech M, Römmele C, Kulkarni OP, *et al.*: **Lack of the long pentraxin PTX3 promotes autoimmune lung disease but not glomerulonephritis in murine systemic lupus erythematosus.** *PLoS One.* 2011; **6**(5): e20118.
[PubMed Abstract](#) | [Publisher Full Text](#) | [Free Full Text](#)
84. Palaniyar N, Clark H, Nadesalingam J, *et al.*: **Surfactant protein D binds genomic DNA and apoptotic cells, and enhances their clearance, *in vivo*.** *Ann NY Acad Sci.* 2003; **1010**: 471–5.
[PubMed Abstract](#) | [Publisher Full Text](#)
85. Palaniyar N, Nadesalingam J, Reid KB: **Innate immune collectins bind nucleic acids and enhance DNA clearance *in vitro*.** *Ann NY Acad Sci.* 2003; **1010**: 467–70.
[PubMed Abstract](#) | [Publisher Full Text](#)
86. Roumenina LT, Sène D, Radanova M, *et al.*: **Functional complement C1q abnormality leads to impaired immune complexes and apoptotic cell clearance.** *J Immunol.* 2011; **187**(8): 4369–73.
[PubMed Abstract](#) | [Publisher Full Text](#)
87. Morgan BP, Walport MJ: **Complement deficiency and disease.** *Immunol Today.* 1991; **12**(9): 301–6.
[PubMed Abstract](#) | [Publisher Full Text](#)

88. Vasoo S: **Drug-induced lupus: an update.** *Lupus*. 2006; **15**(11): 757–61.
[PubMed Abstract](#) | [Publisher Full Text](#)
89. MacPherson M, Lek HS, Prescott A, *et al.*: **A systemic lupus erythematosus-associated R77H substitution in the CD11b chain of the Mac-1 integrin compromises leukocyte adhesion and phagocytosis.** *J Biol Chem*. 2011; **286**(19): 17303–10.
[PubMed Abstract](#) | [Publisher Full Text](#) | [Free Full Text](#)
90. Chen YL, Jan KM, Lin HS, *et al.*: **Ultrastructural studies on macromolecular permeability in relation to endothelial cell turnover.** *Atherosclerosis*. 1995; **118**(1): 89–104.
[PubMed Abstract](#) | [Publisher Full Text](#)
91. Forger F, Matthias T, Oppermann M, *et al.*: **Clinical significance of anti-dsDNA antibody isotypes: IgG/IgM ratio of anti-dsDNA antibodies as a prognostic marker for lupus nephritis.** *Lupus*. 2004; **13**(1): 36–44.
[PubMed Abstract](#) | [Publisher Full Text](#)
92. Witte T, Hartung K, Sachse C, *et al.*: **IgM anti-dsDNA antibodies in systemic lupus erythematosus: negative association with nephritis.** *SLE Study Group. Rheumatol Int*. 1998; **18**(3): 85–91.
[PubMed Abstract](#) | [Publisher Full Text](#)
93. McCarty DJ, Manzi S, Medsger TA Jr, *et al.*: **Incidence of systemic lupus erythematosus. Race and gender differences.** *Arthritis Rheum*. 1995; **38**(9): 1260–70.
[PubMed Abstract](#) | [Publisher Full Text](#)
94. Ferrara N, Davis-Smyth T: **The biology of vascular endothelial growth factor.** *Endocr Rev*. 1997; **18**(1): 4–25.
[PubMed Abstract](#) | [Publisher Full Text](#)
95. Roberts WG, Palade GE: **Increased microvascular permeability and endothelial fenestration induced by vascular endothelial growth factor.** *J Cell Sci*. 1995; **108**(Pt 6): 2369–79.
[PubMed Abstract](#)
96. Groten T, Pierce AA, Huen AC, *et al.*: **17 beta-estradiol transiently disrupts adherens junctions in endothelial cells.** *FASEB J*. 2005; **19**(10): 1368–70.
[PubMed Abstract](#) | [Publisher Full Text](#)
97. Bausero P, Ben-Mahdi M, Mazucatielli J, *et al.*: **Vascular endothelial growth factor is modulated in vascular muscle cells by estradiol, tamoxifen, and hypoxia.** *Am J Physiol Heart Circ Physiol*. 2000; **279**(5): H2033–42.
[PubMed Abstract](#)
98. Robak E, Sysa-Jedzejowska A, Robak T, *et al.*: **Peripheral blood lymphocyte apoptosis and circulating dendritic cells in patients with systemic lupus erythematosus: correlation with immunological status and disease-related symptoms.** *Clin Rheumatol*. 2006; **25**(2): 225–33.
[PubMed Abstract](#) | [Publisher Full Text](#)
99. Casciola-Rosen L, Rosen A, Petri M, *et al.*: **Surface blebs on apoptotic cells are sites of enhanced procoagulant activity: implications for coagulation events and antigenic spread in systemic lupus erythematosus.** *Proc Natl Acad Sci U S A*. 1996; **93**(4): 1624–9.
[PubMed Abstract](#) | [Publisher Full Text](#) | [Free Full Text](#)
100. Ferro D, Pittoni V, Quintarelli C, *et al.*: **Coexistence of anti-phospholipid antibodies and endothelial perturbation in systemic lupus erythematosus patients with ongoing prothrombotic state.** *Circulation*. 1997; **95**(6): 1425–32.
[PubMed Abstract](#) | [Publisher Full Text](#)
101. Rothfield N, Sontheimer RD, Bernstein M: **Lupus erythematosus: systemic and cutaneous manifestations.** *Clin Dermatol*. 2006; **24**(5): 348–62.
[PubMed Abstract](#) | [Publisher Full Text](#)
102. Werth VP, Bashir M, Zhang W: **Photosensitivity in rheumatic diseases.** *J Invest Dermatol Symp Proc*. 2004; **9**(1): 57–63.
[PubMed Abstract](#) | [Publisher Full Text](#)
103. Kolesnick R, Fuks Z: **Radiation and ceramide-induced apoptosis.** *Oncogene*. 2003; **22**(37): 5897–906.
[PubMed Abstract](#) | [Publisher Full Text](#)
104. Garcia-Barros M, Paris F, Cordon-Cardo C, *et al.*: **Tumor response to radiotherapy regulated by endothelial cell apoptosis.** *Science*. 2003; **300**(5622): 1155–9.
[PubMed Abstract](#) | [Publisher Full Text](#)
105. Marathe S, Schissel SL, Yellin MJ, *et al.*: **Human vascular endothelial cells are a rich and regulatable source of secretory sphingomyelinase. Implications for early atherogenesis and ceramide-mediated cell signaling.** *J Biol Chem*. 1998; **273**(7): 4081–8.
[PubMed Abstract](#) | [Publisher Full Text](#)
106. Berda-Haddad Y, Robert S, Salers P, *et al.*: **Sterile inflammation of endothelial cell-derived apoptotic bodies is mediated by interleukin-1alpha.** *Proc Natl Acad Sci U S A*. 2011; **108**(51): 20684–9.
[PubMed Abstract](#) | [Publisher Full Text](#) | [Free Full Text](#)
107. Lech M, Anders HJ: **The pathogenesis of lupus nephritis.** *J Am Soc Nephrol*. 2013; **24**(9): 1357–66.
[PubMed Abstract](#) | [Publisher Full Text](#) | [Free Full Text](#)
108. Williams LR, Leggett RW: **Reference values for resting blood flow to organs of man.** *Clin Phys Physiol Meas*. 1989; **10**(3): 187–217.
[PubMed Abstract](#) | [Publisher Full Text](#)
109. Mortensen ES, Rekvig OP: **Nephritogenic potential of anti-DNA antibodies against necrotic nucleosomes.** *J Am Soc Nephrol*. 2009; **20**(4): 696–704.
[PubMed Abstract](#) | [Publisher Full Text](#)
110. Voulgarelis M, Giannouli S, Tasidou A, *et al.*: **Bone marrow histological findings in systemic lupus erythematosus with hematologic abnormalities: a clinicopathological study.** *Am J Hematol*. 2006; **81**(8): 590–7.
[PubMed Abstract](#) | [Publisher Full Text](#)
111. Nakou M, Knowlton N, Frank MB, *et al.*: **Gene expression in systemic lupus erythematosus: bone marrow analysis differentiates active from inactive disease and reveals apoptosis and granulopoiesis signatures.** *Arthritis Rheum*. 2008; **58**(11): 3541–9.
[PubMed Abstract](#) | [Publisher Full Text](#) | [Free Full Text](#)
112. Mehta P, Norsworthy PJ, Hall AE, *et al.*: **SLE with C1q deficiency treated with fresh frozen plasma: a 10-year experience.** *Rheumatology (Oxford)*. 2010; **49**(4): 823–4.
[PubMed Abstract](#) | [Publisher Full Text](#)
113. Arkwright PD, Riley P, Hughes SM, *et al.*: **Successful cure of C1q deficiency in human subjects treated with hematopoietic stem cell transplantation.** *J Allergy Clin Immunol*. 2014; **133**(1): 265–7.
[PubMed Abstract](#) | [Publisher Full Text](#)
114. Enk AH, Knop J: **[Successful management of systemic lupus erythematosus with IgM enriched immunoglobulins].** *Hautarzt*. 2000; **51**(6): 416–8.
[PubMed Abstract](#) | [Publisher Full Text](#)
115. Sakthiswary R, Raymond AA: **The clinical significance of vitamin D in systemic lupus erythematosus: a systematic review.** *PLoS One*. 2013; **8**(1): e55275.
[PubMed Abstract](#) | [Publisher Full Text](#) | [Free Full Text](#)
116. Wong MS, Leisegang MS, Kruse C, *et al.*: **Vitamin D promotes vascular regeneration.** *Circulation*. 2014; **130**(12): 976–86.
[PubMed Abstract](#) | [Publisher Full Text](#)
117. Webb JH, Blom AM, Dahlback B: **Vitamin K-dependent protein S localizing complement regulator C4b-binding protein to the surface of apoptotic cells.** *J Immunol*. 2002; **169**(5): 2580–6.
[PubMed Abstract](#) | [Publisher Full Text](#)
118. Deapen D, Escalante A, Weinrib L, *et al.*: **A revised estimate of twin concordance in systemic lupus erythematosus.** *Arthritis Rheum*. 1992; **35**(3): 311–8.
[PubMed Abstract](#) | [Publisher Full Text](#)

Open Peer Review

Current Referee Status:



Version 1

Referee Report 18 March 2015

doi:[10.5256/f1000research.6504.r8022](https://doi.org/10.5256/f1000research.6504.r8022)



Fleur Bossi

Department of Life Sciences, University of Trieste, Trieste, Italy

The title and Abstract are appropriate.

The article is well written, and the hypothesis is consistent and supported by a good number of references.

The conclusions are balanced and well documented.

Minor comments:

Page 3 Figure 1 endothel should be endothelial

Page 7 Figure 2 sufficient should be sufficient

Page 7 Figure 2 Legend (A) endothel should be endothelial

I have read this submission. I believe that I have an appropriate level of expertise to confirm that it is of an acceptable scientific standard.

Competing Interests: No competing interests were disclosed.

Author Response 30 Apr 2015

József Prechl,

Thank you for reading our paper with scrutiny and helping to improve the quality of the paper. We have made the corrections you suggested in the second version.

Competing Interests: No competing interests were disclosed.

Referee Report 17 March 2015

doi:[10.5256/f1000research.6504.r7993](https://doi.org/10.5256/f1000research.6504.r7993)



Gregg Silverman

Department of Medicine, New York University Langone Medical Center, New York, NY, USA

The manuscript of Prechl and Czirjak provides a thoughtful review of the interface of endothelial cells and soluble factors of complement and antibodies in the pathogenesis of SLE and related diseases. I would

recommend to the authors that they also consider the work of two independent groups on the effects of autoantigen specific IgM in the development of post ischemic injury to the vasculature ^{1,2}. Candidate autoantigens have been identified (i.e., annexin IV, non-muscle myosin heavy chain II) ³. Overt apoptosis of the endothelial cells may not be an absolute requirement for the expression of modified self antigens that then become accessible to IgM molecules. Furthermore the authors comment that products of complement activation are involved in the clearance of injured and apoptotic cells, but there is extensive evidence that deposition of C1q or MBL are themselves sufficient to serve as “eat me “ signals ^{4,5}. Complexes of (auto) antigen and IgM can therefore enhance phagocytic clearance as they can further enhance MBL and C1q recruitment ⁶.

References

1. Kulik L, Fleming SD, Moratz C, Reuter JW, Novikov A, Chen K, Andrews KA, Markaryan A, Quigg RJ, Silverman GJ, Tsokos GC, Holers VM: Pathogenic natural antibodies recognizing annexin IV are required to develop intestinal ischemia-reperfusion injury. *J Immunol.* 2009; **182** (9): 5363-5373 [PubMed Abstract](#) | [Free Full Text](#) | [Publisher Full Text](#) | [Reference Source](#)
2. Zhang M, Takahashi K, Alicot EM, Vorup-Jensen T, Kessler B, Thiel S, Jensenius JC, Ezekowitz RA, Moore FD, Carroll MC: Activation of the lectin pathway by natural IgM in a model of ischemia/reperfusion injury. *J Immunol.* 2006; **177** (7): 4727-4734 [PubMed Abstract](#) | [Publisher Full Text](#) | [Reference Source](#)
3. Zhang M, Alicot EM, Carroll MC: Human natural IgM can induce ischemia/reperfusion injury in a murine intestinal model. *Mol Immunol.* 2008; **45** (15): 4036-4039 [PubMed Abstract](#) | [Free Full Text](#) | [Publisher Full Text](#) | [Reference Source](#)
4. Navratil JS, Watkins SC, Wisnieski JJ, Ahearn JM: The globular heads of C1q specifically recognize surface blebs of apoptotic vascular endothelial cells. *J Immunol.* 2001; **166** (5): 3231-3239 [PubMed Abstract](#) | [Publisher Full Text](#) | [Reference Source](#)
5. Taylor PR, Carugati A, Fadok VA, Cook HT, Andrews M, Carroll MC, Savill JS, Henson PM, Botto M, Walport MJ: A hierarchical role for classical pathway complement proteins in the clearance of apoptotic cells in vivo. *J Exp Med.* 2000; **192** (3): 359-366 [PubMed Abstract](#) | [Free Full Text](#) | [Publisher Full Text](#) | [Reference Source](#)
6. Chen Y, Park YB, Patel E, Silverman GJ: IgM antibodies to apoptosis-associated determinants recruit C1q and enhance dendritic cell phagocytosis of apoptotic cells. *J Immunol.* 2009; **182** (10): 6031-6043 [PubMed Abstract](#) | [Publisher Full Text](#) | [Reference Source](#)

I have read this submission. I believe that I have an appropriate level of expertise to confirm that it is of an acceptable scientific standard.

Competing Interests: No competing interests were disclosed.

Author Response 30 Apr 2015

József Prechl,

Thank you for taking the time to read and constructively comment on our hypothesis. We have incorporated some of the suggested papers as references. Actually we tried to build our hypothesis mostly on human data, because of the known differences in complement regulation between human and mouse. It was of course unavoidable to utilize murine experimental observations, but we kept it to a minimum. Nevertheless, some of the references are murine experimental data and biochemical observations probably hold for the human as well. More caution is probably needed when biological phenomenon and specific immune mechanisms, as specificity of natural

antibodies, are considered. A careful comparison and analysis of human and murine data is probably required but this exceeded the scope of this hypothesis paper.

Competing Interests: No competing interests were disclosed.

Referee Report 23 February 2015

doi:10.5256/f1000research.6504.r7494



Marko Radic

Microbiology, Immunology and Biochemistry, University of Tennessee Health Science Center, Memphis, TN, USA

Prechl and Czirjak present an attempt to synthesize several aspects of lupus pathogenesis. In many respects, the opinion article reviews well known territory and the novel aspect is that the authors seek to include a role for complement C1q in the processes of transendothelial transport and paracellular leakage. These events could be compromised by the reduced levels of C1q that are associated with lupus or with DNA-anti-DNA immune complexes (IC). The proposed hypothesis is appealing because it may account for the early steps in pathogenesis. It may also provide a convincing connection to sites of vascular disease and IC deposition. One aspect that is not thoroughly covered is the deposition of C1q at sites of endothelial discontinuity. These are presented as areas that arise from the apoptotic death of endothelial cells which could expose underlying ECM. However, previous reports of apoptosis in a continuous endothelium revealed the rapid displacement of the dead cell by surrounding cells in the cell layer. This needs to be discussed more fully. In addition, the primary references describing the role of C1q in endothelial healing and renewal are sparse and incomplete. Possibly, the involvement of C1q in angiogenesis could be related to the proposed process but the connection is not clearly developed. Overall, the opinion piece could be streamlined by focusing on the innovative concept of C1q's role in regenerating endothelial gaps.

Minor comments:

- Figure 1 shows brackets that do not make sense mathematically. Why are genetic factors shown in purple?
- "Endothel" should be endothelium.
- Figure 2 is a bit busy and difficult to deconstruct. Also the color of arrows is not explained.
- Figure 3 is confusing as to what factors make the three colored ovals merge and overlap.

I have read this submission. I believe that I have an appropriate level of expertise to confirm that it is of an acceptable scientific standard, however I have significant reservations, as outlined above.

Competing Interests: No competing interests were disclosed.

Author Response 30 Apr 2015

József Prechl,

Thank you for your thorough analysis of our hypothesis and its description. We do agree that the data supporting the role of C1q in regulating endothelial permeability, healing and renewal is sparse. This is main the reason for calling this work a hypothesis and not yet a theory. The reports of C1q influencing endothelial renewal however do fit into the overall emerging big picture of the complement system playing a general role in morphogenesis and tissue repair. We hope and expect to see more experimental data on these aspects of complement in the near future. To highlight the interactions of C1q with the endothelium and the consequences of C1q-containing immune complexes binding to the endothelium we have inserted two new figures into the second revised version of the paper.

The speed of dead endothelial cell replacement and also the turnover rate of these cells are difficult issues. Data are not consistent on these values but because of the huge surface the endothelium covers we expect that even minor and accidental discontinuities count and serve as sites of damage initiation. This may well contribute to the randomness of the development of damage sites and of flares.

We accept that brackets and parentheses do not change the result of a multiplication when numbers are multiplied. If we consider these factors not as numbers but something more complex, like matrices, then brackets might make sense. Here, using the brackets and blue/purple color, we only intended to highlight that genetic variability mainly affects proteins contributing to physiology and immunity but not anatomy. We explained this in the legends now.

Syntax errors were corrected as suggested.

We explained the colors of the arrows in figure 2. To make this figure somewhat less busy we also decreased the size of the arrows in between the boxes.

We think that it is one major abnormality (e.g. C1q deficiency) or the combination of several abnormalities (multiple genetic factors affecting e.g. apoptotic debris clearance via CR3, adaptive response e.g. via HLA alleles, together with environmental effects, like an infection) that trigger the imbalance and the merging of these different pathways. The consumption and relative depletion of C1q and natural IgM is key to this overlap and lupus development.

To help the reader follow this line of thinking we added „consumption of the gatekeepers,” to the legend.

We hope that our responses and corrections are acceptable and improve understandability.

Competing Interests: No competing interests were disclosed.