



Body Composition Is a Predictor for Postoperative Complications After Gastrectomy for Gastric Cancer: a Prospective Side Study of the LOGICA Trial

Thaïs T. T. Tweed¹ · Arjen van der Veen² · Stan Tummers¹ · David P. J. van Dijk¹ · Misha D. P. Luyer³ · Jelle P. Ruurda² · Richard van Hillegersberg² · Jan H. M. B. Stoot¹ · LOGICA study group · Juul J. W. Tegels · Karel W. E. Hulsewe · Hylke J. F. Brenkman · Maarten F. J. Seesing · Grard A. P. Nieuwenhuijzen · Jeroen E. H. Ponten · Bas P. L. Wijnhoven · Sjoerd M. Lagarde · Wobbe O. de Steur · Henk H. Hartgrink · Ewout A. Kouwenhoven · Marc J. van Det · Eelco B. Wassenaar · Edwin S. van der Zaag · Werner A. Draaisma · Ivo A. M. J. Broeders · Suzanne S. Gisbertz · Mark I. van Berge Henegouwen · Hanneke W. M. van Laarhoven

Received: 17 January 2022 / Accepted: 29 March 2022 / Published online: 29 April 2022
© The Author(s) 2022

Abstract

Purpose There is a lack of prospective studies evaluating the effects of body composition on postoperative complications after gastrectomy in a Western population with predominantly advanced gastric cancer.

Methods This is a prospective side study of the LOGICA trial, a multicenter randomized trial on laparoscopic versus open gastrectomy for gastric cancer. Trial patients who received preoperative chemotherapy followed by gastrectomy with an available preoperative restaging abdominal computed tomography (CT) scan were included. The CT scan was used to calculate the mass (M) and radiation attenuation (RA) of skeletal muscle (SM), visceral adipose tissue (VAT), and subcutaneous adipose tissue (SAT). These variables were expressed as Z-scores, depicting how many standard deviations each patient's CT value differs from the sex-specific study sample mean. Primary outcome was the association of each Z-score with the occurrence of a major postoperative complication (Clavien-Dindo grade $\geq 3b$).

Results From 2015 to 2018, a total of 112 patients were included. A major postoperative complication occurred in 9 patients (8%). A high SM-M Z-score was associated with a lower risk of major postoperative complications (RR 0.47, 95% CI 0.28–0.78, $p=0.004$). Furthermore, high VAT-RA Z-scores and SAT-RA Z-scores were associated with a higher risk of major postoperative complications (RR 2.82, 95% CI 1.52–5.23, $p=0.001$ and RR 1.95, 95% CI 1.14–3.34, $p=0.015$, respectively). VAT-M, SAT-M, and SM-RA Z-scores showed no significant associations.

Conclusion Preoperative low skeletal muscle mass and high visceral and subcutaneous adipose tissue radiation attenuation (indicating fat depleted of triglycerides) were associated with a higher risk of developing a major postoperative complication in patients treated with preoperative chemotherapy followed by gastrectomy.

Keywords Body composition · Skeletal muscle mass · Radiation attenuation · Gastrectomy · Chemotherapy

T.T.T. Tweed and A. van der Veen contributed equally.

✉ Thaïs T. T. Tweed
th.tweed@zuyderland.nl

¹ Department of Surgery, Zuyderland Medical Center, Heerlen and Sittard-Geleen, the Netherlands

² Department of Surgery, University Medical Center Utrecht, Utrecht University, Utrecht, the Netherlands

³ Department of Surgery, Catharina Hospital, Eindhoven, the Netherlands

Introduction

Gastric cancer is the sixth most prevalent cancer and the third most common cause of cancer-related death worldwide.¹ Perioperative chemotherapy followed by gastrectomy is the treatment of choice in the Western population.² Approximately, 42% of all gastric cancer patients who undergo surgical resection develop a postoperative complication and 21% a major postoperative complication (Clavien-Dindo grade III or higher).^{3,4}

Clinically, accurate prediction of major postoperative complication may help in the choice to refrain from surgery in very fragile patients or to improve the patient's health status preoperatively. Several risk factors for a higher risk of postoperative complications and mortality have been identified (age, malnutrition, anemia, smoking, total gastrectomy). Yet, these factors do not fully explain the observed wide variation in postoperative complications after gastrectomy.^{5,6}

Recently, sarcopenia, and other body composition parameters such as myosteatorosis (lipid infiltration in skeletal muscle) have been identified as independent risk factors for postoperative complications.^{7–9} Sarcopenia is defined as a progressive loss of skeletal muscle strength in the presence of low skeletal muscle mass or skeletal muscle quality.^{10–15} An example of reduced muscle quality is myosteatorosis which is associated with reduced physical fitness.¹⁶ For both lower and upper gastrointestinal surgery, previous studies have demonstrated that sarcopenia, myosteatorosis, and other body composition parameters are associated with a worse postoperative outcome.^{13,17–19} For gastric cancer surgery, a recent meta-analysis including mostly Eastern studies showed that the odds of developing major postoperative complications and overall mortality were higher in patients with a low muscle mass.⁹ However, most the studies included in this meta-analysis were retrospective and used a wide variety of sarcopenia cut-off points. Furthermore, Western and Eastern gastric cancer population have important differences, impeding generalizability of Eastern studies on the Western population.²⁰ Hence, there is a need for more prospective Western studies.

The aim of the current study was to evaluate body composition as predictor for postoperative complications in patients with gastric cancer treated with preoperative chemotherapy and gastrectomy.

Materials and Methods

Study Design

This is a multicenter, prospective, observational cohort side study of patients included in the Laparoscopic versus open gastrectomy for gastric cancer (LOGICA) trial.²¹ The current side study was initiated in 2015 together with the LOGICA trial. The LOGICA trial evaluated surgical and oncological outcomes between laparoscopic and open gastric surgery for gastric cancer. The results of the main trial were previously published.²¹ The current side study was conducted in compliance with the Dutch law and in accordance with the principles of the declaration of Helsinki. Written informed consent was obtained from all participating patients for inclusion in the LOGICA trial. The abdominal computed tomography (CT) scans of all LOGICA trial participants

were pseudonymized and used for body composition analysis, as was approved by the Dutch Ethical Committee of Utrecht (medisch-ethische toetsingscommissie).

Procedures

Clinical staging included gastroesophagoscopy with biopsy and a CT scan of the thorax and abdomen. All patients were discussed in a multidisciplinary tumor board meeting prior to treatment. Perioperative chemotherapy was recommended in all eligible patients with advanced tumors (cT3-4N0-3 or cT1-2N1-3). For each individual patient who underwent preoperative chemotherapy, the multidisciplinary tumor board of each individual hospital determined whether a restaging CT scan was made during the last courses of chemotherapy or after completion of chemotherapy. A restaging CT scan was thus not obligatory, as is in line with standard of care in the Netherlands.

In the LOGICA trial, patients were randomized in a 1:1 ratio between laparoscopic and open surgery.²¹ Surgical procedures included total or distal gastrectomy with total omentectomy and D2 lymphadenectomy, as previously described.²¹ Postoperative treatment protocols were in accordance with to the guidelines for Enhanced Recovery After Surgery (ERAS).²² Multiple quality control measures were included in the LOGICA trial, as previously described.²¹

Patients and Data Collection

Patients included in the LOGICA trial were eligible for this study and therefore met the same inclusion criteria set for the trial.²¹ Both study arms (laparoscopic and open gastrectomy) were included. The primary analysis included the patients who underwent preoperative chemotherapy followed by a D2 gastrectomy. As this was an observational prospective side study, a restaging CT scan was not obligatory, and only patients with a restaging CT scan were included. Subgroup analyses were performed in patients who underwent primary surgery, by using the CT scan closest to the operation date (but within 6 months prior to the operation data). The distinction between the primary surgery group and preoperative chemotherapy group was made, since the primary surgery group was expected to consist of a more heterogeneous cohort of patients in worse clinical condition and with different preoperative body compositions, compared to the preoperative chemotherapy group.

For the purpose of the current prospective side study, the patients included in the LOGICA trial completed the Short Nutritional Assessment Questionnaire (SNAQ)²³ and Groningen Frailty Index (GFI) questionnaire²⁴ 1 week prior to gastrectomy. Higher questionnaire scores indicate more malnutrition or more frailty, respectively.

Body Composition Analysis

For each abdominal CT scan, a single transverse slice at the level of the third lumbar vertebra (L3) was extracted by a single researcher trained in **body composition analysis** (TT). Total cross-sectional surface area (cm²) measurements of skeletal muscle tissue (SM), visceral adipose tissue (VAT), and subcutaneous adipose tissue (SAT) were performed using Slice-O-Matic 5.0® software using predefined Hounsfield unit (HU) ranges (– 29 to 150 HU, – 150 to – 50 HU, and – 190 to – 30 HU, respectively).^{13,25,26} Total cross-sectional surface area (cm²) of SM, VAT, and SAT was corrected for patient height to calculate the L3-index (cm²/m²). This parameter will be referred to as the mass (M) of these 3 tissues: SM-M, VAT-M, and SAT-M (Table 1).

Additionally, these 3 tissues were assessed for radiation attenuation (RA). RA indicates how much radiation is absorbed in the body tissues (expressed in HU) during the diagnostic CT scan. The remaining radiation passes through the body and produces a grayscale image on CT. The RA of fat lies between – 190 and – 30 HU; the RA of water is per definition 0 HU; and the RA of muscle lies between – 29 and 150 HU. Hence, a decreased RA in fat could be indicative of better nutritional status (higher triglyceride concentration, lower water concentration), whereas a decreased RA in muscle could be indicative of worse muscle quality due to myosteatosis (higher triglyceride concentration) or muscle edema (higher water concentration).^{25,27–31} The RA of the 3 tissues will be referred to as: SM-RA, VAT-RA, and SAT-RA (Table 1).

Z-Score

In an effort to correct for the effects of sex and standardize the scores, SM-M, VAT-M, SAT-M, SM-RA, VAT-RA,

and SAT-RA were expressed as Z-scores. The Z-score depicts how each patient's standard deviation differs from the mean value of patients of the same sex.³² It is calculated by taking the measured value of each patient and subtracting the sex-specific mean and thereafter dividing by the sex-specific standard deviation.

Outcome Measurements

The primary outcome was the association of the 6 body composition Z-scores (SM-M, VAT-M, SAT-M, SM-RA, VAT-RA, and SAT-RA) with the occurrence of a major postoperative complication. Secondary outcomes were the association of the SNAQ score²³ and GFI²⁴ with the occurrence of a major postoperative complication. Postoperative complications were defined according to the Esophagectomy Complications Consensus Group (ECCG) definitions and scored according to the Clavien-Dindo Classification, as previously described.^{21,33,34} A major postoperative complication was defined as a Clavien-Dindo grade \geq 3b complication.

Statistical Analysis

Statistical analysis was performed using R statistical computing version 3.6.1 (R Foundation for Statistical Computing, Vienna, Austria). As previously described, the primary analysis included patients who underwent preoperative chemotherapy followed by gastrectomy. Subgroup analyses included patients who underwent primary surgery. The Z-scores of the body composition parameters were used, as previously described. Gaussian distributed continuous data are presented as means with standard deviations and non-Gaussian distributed continuous data as medians with interquartile ranges. Univariable and multivariable Poisson regression with robust error variances were performed for the binary outcome major postoperative complication yes/

Table 1 Variables and abbreviations

Variable	Abbreviation
Skeletal muscle	SM
Visceral adipose tissue	VAT
Subcutaneous adipose tissue	SAT
Mass	-M
Mass indicates the amount of the assessed tissue, corrected for the patient's height. Higher scores indicate a higher volume of tissue	
Radiation attenuation	-RA
Radiation attenuation indicates how much radiation is absorbed in tissues upon making a CT scan (expressed in Hounsfield units). Higher values indicate lower triglyceride concentration. For muscle, this indicates worse tissue quality. For fat, this indicates better nutritional reserves	
Short Nutritional Assessment Questionnaire	SNAQ
Higher scores indicate more malnutrition	
Groningen Frailty Index	GFI
Higher scores indicate more frailty	

no, producing relative risks according to the methods by Zou et al.^{35,36}. The 6 body composition Z-scores (SM-M, VAT-M, SAT-M, SM-RA, VAT-RA, and SAT-RA), SNAQ score, and GFI were each tested in a separate multivariable model without correction from the other 6 body composition Z-scores, SNAQ score, and GFI. Relevant baseline and treatment characteristics were first tested univariably and added to the multivariable models only if the *p* value was 0.200 or smaller. This was done to prevent over-fitting of the models.

Results

Patient Characteristics

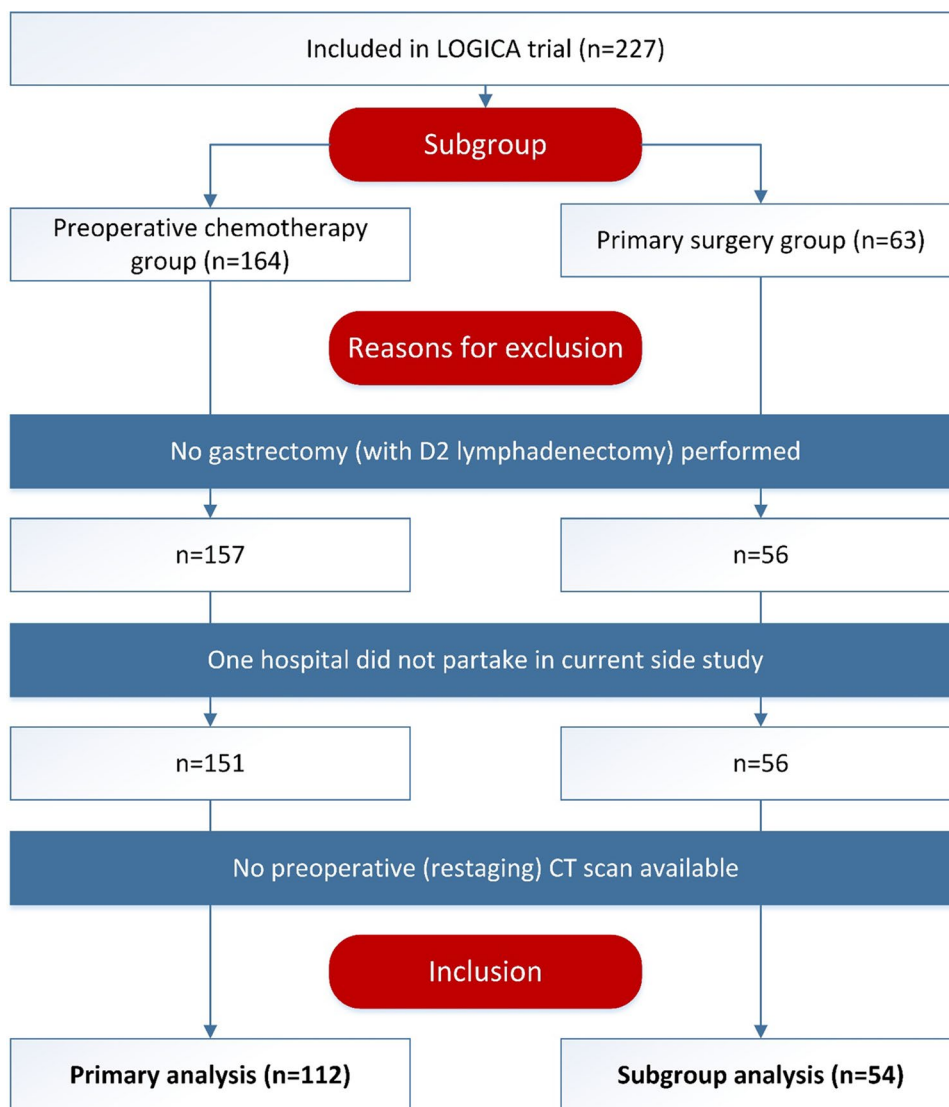
From February 2015 to August 2018, 227 patients were included in the LOGICA trial in the 10 participating hospitals. A total of 164 patients received preoperative

chemotherapy and 63 patients received primary surgery (Fig. 1).

Of the 164 patients in the preoperative chemotherapy group, 6 patients received a laparoscopy without resection, and 1 patient received an esophagogastric resection with cervical esophagostomy.²¹ The remaining 157 patients were potentially eligible for inclusion in the primary analysis. A total of 6 patients (4%) were excluded because one hospital chose not to partake in the current side study and 39 patients (25%) were excluded because no restaging CT scan was available. The remaining 112 patients (71%) were included in the primary analysis.

Of the 63 patients in the primary surgery group, 4 patients received a laparoscopy or laparotomy without resection, 1 patient received a distal gastrectomy with D1 lymphadenectomy, and 2 patients did not proceed to surgery.²¹ The remaining 56 were potentially eligible for inclusion in the subgroup analysis. After exclusion of 2 patients (4%)

Fig. 1 Study flowchart



without available CT scans, the remaining 54 patients were included in the subgroup analysis.

Patient characteristics at baseline, body composition parameters, treatment characteristics, and outcomes are described in Table 2. In the preoperative chemotherapy group, preoperative chemotherapy was completed in 89 patients (79%) and stopped prematurely in 21 patients (19%), and data on completion were missing in two patients (2%). Total gastrectomy was performed in 50 patients (45%) and distal gastrectomy in 62 patients (55%). A grade $\geq 3b$ postoperative complication occurred in 9 patients (8%). The excluded 33 patients without a restaging CT scan had similar patient characteristics, treatment, and outcome as the included 112 patients (Supplementary Table 1).

In the primary surgery group, total gastrectomy was performed in 18 patients (33%) and distal gastrectomy in 36 patients (67%). A grade $\geq 3b$ postoperative complication occurred in 14 patients (26%).

CT Scan Timing

The CT scan timing is displayed in Fig. 2. For the preoperative chemotherapy group, median time from start of preoperative chemotherapy to restaging CT scan was 56 days [IQR 42–63]. Median time from restaging CT scan to surgery was 37 days [IQR 31–55]. For the primary surgery group, median time from CT scan to surgery was 39 days [IQR 28–56].

Primary Analyses: Preoperative Chemotherapy Group

Tissue Mass

In the preoperative chemotherapy group, a high SM-M Z-score (more muscle) was significantly associated with a lower risk of a grade $\geq 3b$ postoperative complication in univariable (RR 0.48, 95% CI 0.30–0.77, $p=0.002$) and multivariable analyses (RR 0.47, 95% CI 0.28–0.78, $p=0.004$) (Table 3, Fig. 3).

A high VAT-M Z-score (more visceral fat) showed a trend towards being associated with a lower risk of a grade $\geq 3b$ postoperative complication in univariable (RR 0.47, 95% CI 0.16–1.36, $p=0.164$) and multivariable analyses (RR 0.44, 95% CI 0.14–1.40, $p=0.166$), but did not reach statistical significance (Table 3).

Likewise, a high SAT-M Z-score (more subcutaneous fat) showed a trend towards being associated with a lower risk of a grade $\geq 3b$ postoperative complication in univariable (RR 0.64, 95% CI 0.37–1.10, $p=0.105$) and multivariable analyses (RR 0.61, 95% CI 0.35–1.08, $p=0.088$), but did not reach statistical significance (Table 3).

Radiation Attenuation

In the preoperative chemotherapy group, a high SM-RA Z-score (good muscle quality) was not associated with a lower risk of a grade $\geq 3b$ postoperative complication in univariable (RR 0.95, 95% CI 0.61–1.48, $p=0.821$) and multivariable analyses (RR 0.95, 95% CI 0.58–1.55, $p=0.825$) (Table 3).

In contrast, a high VAT-RA Z-score (visceral fat depleted of triglycerides) was associated with a higher risk of a grade $\geq 3b$ postoperative complication in both univariable (RR 2.62, 95% CI 1.39–4.94, $p=0.003$) and multivariable analyses (RR 2.82, 95% CI 1.52–5.23, $p=0.001$) (Table 3).

Likewise, a high SAT-RA Z-score (subcutaneous fat depleted of triglycerides) was associated with a higher risk of a grade $\geq 3b$ postoperative complication in both univariable (RR 2.00, 95% CI 1.13–3.53, $p=0.017$) and multivariable analyses (RR 1.95, 95% CI 1.14–3.34, $p=0.015$) (Table 3).

SNAQ and GFI

In the preoperative chemotherapy group, a high SNAQ score (more malnutrition) was not associated with an increased risk of a grade $\geq 3b$ postoperative complication in both univariable (RR 0.99, 95% CI 0.70–1.42, $p=0.971$) and multivariable analyses (RR 1.07, 95% CI 0.79–1.44, $p=0.684$) (Table 3). Likewise, a high GFI (more frailty) showed a trend towards being associated with a lower risk of a grade $\geq 3b$ postoperative complication in univariable (RR 0.76, 95% CI 0.52–1.11, $p=0.157$) and multivariable analyses (RR 0.78, 95% CI 0.56–1.10, $p=0.156$), but did not reach statistical significance (Table 3).

Total Versus Distal Gastrectomy

In the preoperative chemotherapy group, distal gastrectomy showed a trend towards being associated with a lower risk of a grade $\geq 3b$ postoperative complication in univariable analysis (RR 0.40, 95% CI 0.11–1.53, $p=0.182$). Hence, in multivariable analyses, each CT body composition parameter, the SNAQ score and GFI, was adjusted for whether a total or distal gastrectomy was performed (Table 3).

Subgroup Analysis: Primary Surgery Group

Tissue Mass

In the primary surgery group, a high SM-M Z-score (more muscle) was significantly associated with an increased risk of a grade $\geq 3b$ postoperative complication in univariable (RR 1.47, 95% CI 1.22–1.77, $p<0.001$) and multivariable analyses (RR 1.58, 95% CI 1.28–1.94, $p<0.001$) (Table 4).

Table 2 Patient characteristics, treatment and outcomes

	Preoperative chemotherapy		Primary surgery	
	n	(%)	n	(%)
	112		54	
Male sex	73	(65.2)	32	(59.3)
Age, years (mean (SD))	65.6	(9.6)	74.7	(8.3)
BMI, kg/m² (median [IQR])	25.7	[23.2, 29.0]	25.4	[22.1, 28.1]
ASA score				
1	14	(12.5)	3	(5.6)
2	73	(65.2)	36	(66.7)
3	25	(22.3)	15	(27.8)
Cardiovascular comorbidity	55	(49.1)	38	(70.4)
Pulmonary comorbidity	23	(20.5)	12	(22.2)
Location of tumor				
Proximal stomach	14	(12.5)	3	(5.6)
Middle stomach	31	(27.7)	20	(37.0)
Distal stomach	67	(59.8)	31	(57.4)
cT-stage				
cT1	5	(4.5)	8	(14.8)
cT2	29	(25.9)	20	(37.0)
cT3	67	(59.8)	23	(42.6)
cT4	11	(9.8)	3	(5.6)
cN1-3	51	(45.5)	22	(40.7)
Advanced cancer¹	88	(78.6)	32	(59.3)
SNAQ score, (mean (SD))	2	(2.1)	2.3	(2.5)
Missing	38	(34.9)	15	(27.8)
GFI, (mean (SD))	2.9	(2.3)	2.9	(2.3)
Missing	26	(23.2)	11	(20.4)
SM, cm²/m² (mean (SD))	44.8	(8.1)	42.8	(8.0)
VAT, cm²/m² (mean (SD))	51.9	(32.3)	57.5	(36.8)
SAT, cm²/m² (mean (SD))	63.8	(33.4)	58.6	(31.1)
SM-RA, HU² (mean (SD))	36.7	(10.7)	32.0	(8.0)
VAT-RA, HU² (mean (SD))	-90.5	(7.8)	-89.9	(8.8)
SAT-RA, HU² (mean (SD))	-96.1	(8.9)	-92.5	(9.7)
Preoperative chemotherapy				
ECC or equivalent	84	(75.0)	n/a	
FLOT	19	(17.0)	n/a	
Others	9	(8.0)	n/a	

Table 2 (continued)

	Preoperative chemotherapy	Primary surgery
n (%)	112	54
Preoperative chemotherapy completed (> 80% of courses)		
Yes	89 (79.5)	n/a
No	21 (18.8)	n/a
Missing	2 (1.8)	n/a
Type of operation		
Total gastrectomy	50 (44.6)	18 (33.3)
Distal gastrectomy	62 (55.4)	36 (66.7)
Laparoscopic gastrectomy	53 (47.3)	34 (63.0)
Complication	38 (33.9)	31 (57.4)
CDC of most severe complication (%)		
1	8 (7.1)	2 (3.7)
2	16 (14.3)	12 (22.2)
3a	5 (4.5)	3 (5.6)
3b	2 (1.8)	3 (5.6)
4a	4 (3.6)	2 (3.7)
4b	0 (0.0)	1 (1.9)
5	3 (2.7)	8 (14.8)
Anastomotic leakage	8 (7.1)	8 (14.8)
Anastomotic leakage grade (ECCG)		
I	2 (1.8)	1 (1.9)
II	1 (0.9)	0 (0.0)
III	5 (4.5)	7 (13.0)
Adjuvant chemotherapy started	59 (52.7)	1 (1.9)
1-year all-cause mortality	20 (17.9)	16 (29.6)

IQR interquartile range; *SD* standard deviation; *ASA* American Society of Anaesthesiologists; *SM* skeletal muscle; *SAT* subcutaneous adipose tissue; *VAT* visceral adipose tissue; *RA* radiation attenuation; *HU* Hounsfield units; *SNAQ* Short Nutritional Assessment Questionnaire; *GFI* Groningen Frailty Index. *ECC* epirubicin + cisplatin + capecitabine; *FLOT* fluorouracil + leucovorin + oxaliplatin + docetaxel; *CDC* Clavien-Dindo Classification; *ECCG* Esophagectomy Complications Consensus Group

¹Defined as cT3–4N0 or cT1–2N+

Fig. 2 Histograms showing the timing of the CT scans. *The primary surgery group has one outlier at 160 days. This patient underwent a staging CT scan, followed by an endoscopic submucosal dissection for early stage gastric cancer. Pathological analysis showed dubious radicality and angioinvasion, which prompted extensive cardiac screening of the patient due to comorbidity, followed by distal gastrectomy. This patient did not suffer a severe postoperative complication and was discharged in good clinical condition 10 days after surgery

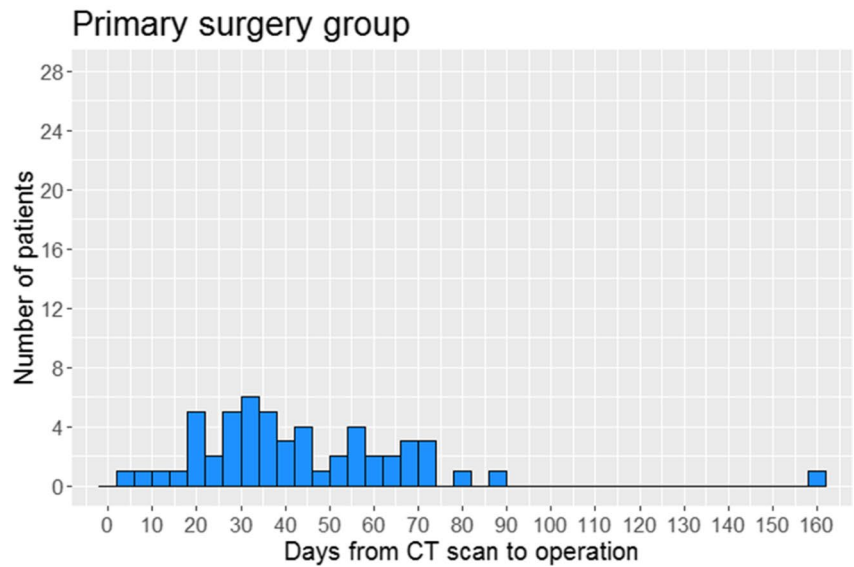
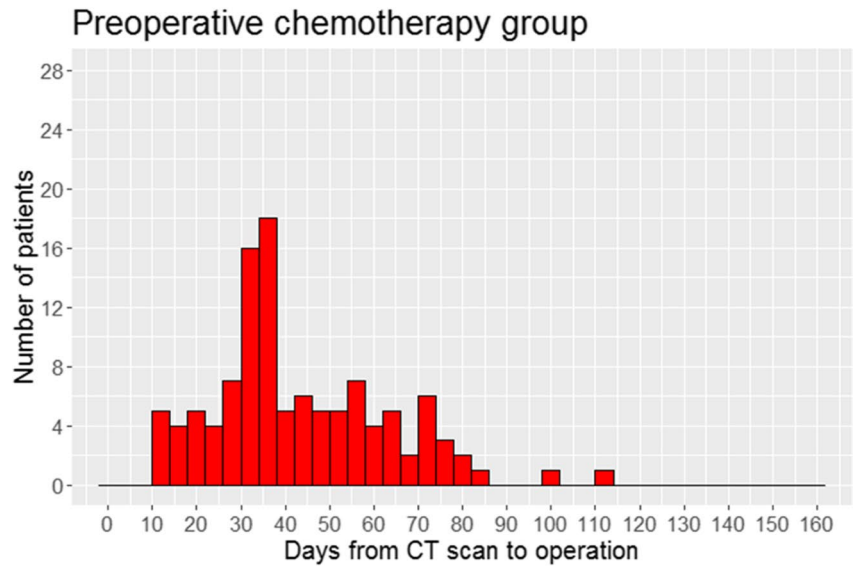
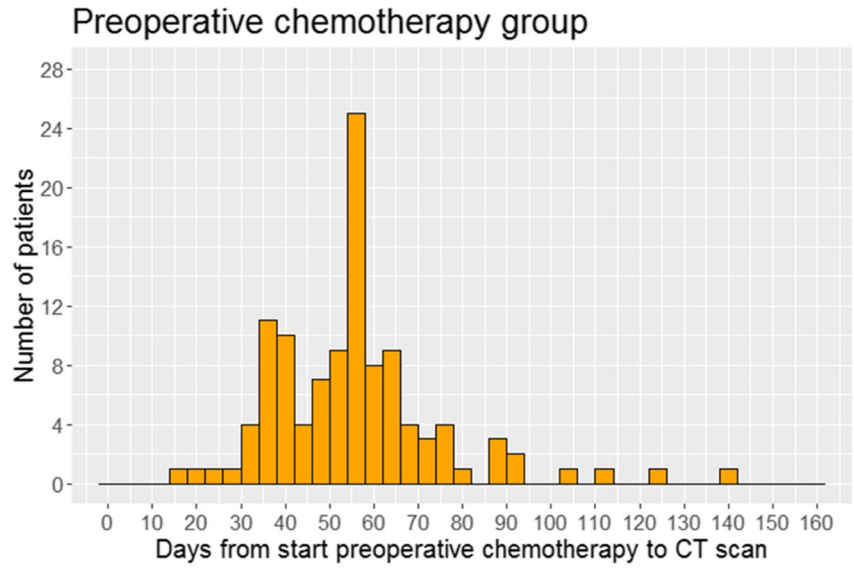


Table 3 Preoperative chemotherapy group. Relative risks of having a postoperative grade $\geq 3b$ complication

	Preoperative chemotherapy group						
	Univariable			Multivariable			
	RR	[95% CI]	<i>p</i>	RR	[95% CI]	<i>p</i>	
SM-M Z-score	0.48	[0.30–0.77]	0.002	0.47	[0.28–0.78]	0.004	*
VAT-M Z-score	0.47	[0.16–1.36]	0.164	0.44	[0.14–1.40]	0.166	*
SAT-M Z-score	0.64	[0.37–1.10]	0.105	0.61	[0.35–1.08]	0.088	*
SM-RA Z-score	0.95	[0.61–1.48]	0.821	0.95	[0.58–1.55]	0.825	*
VAT-RA Z-score	2.62	[1.39–4.94]	0.003	2.82	[1.52–5.23]	0.001	*
SAT-RA Z-score	2.00	[1.13–3.53]	0.017	1.95	[1.14–3.34]	0.015	*
SNAQ score	0.99	[0.70–1.42]	0.971	1.07	[0.79–1.44]	0.684	*
GFI	0.76	[0.52–1.11]	0.157	0.78	[0.56–1.10]	0.156	*
Additional year of age	1.00	[0.95–1.05]	0.980				
ASA score							
1 or 2	Ref	-	-				
3	0.99	[0.22–4.5]	0.994				
cT stage							
T1–T2	Ref	-	-				
T3–T4	1.53	[0.33–7.0]	0.586				
cN stage							
cN0	Ref	-	-				
cN1–cN3	0.96	[0.27–3.38]	0.945				
Distal gastrectomy	0.40	[0.11–1.53]	0.182	0.40	[0.10–1.58]	0.191	**
Laparoscopic surgery	0.89	[0.25–3.14]	0.857				

Poisson regressions with robust error variances were performed, producing a relative risk of having a postoperative grade $\geq 3b$ complication (yes/no) for each of the CT body composition parameters. Bold values indicate significance ($p < 0.05$)

RR relative risk; CI confidence interval; ref reference; SM skeletal muscle; VAT visceral adipose tissue; SAT subcutaneous adipose tissue; M mass; RA radiation attenuation; SNAQ Short Nutritional Assessment Questionnaire; GFI Groningen Frailty Index

*In multivariable analyses, each CT body composition parameter, the SNAQ score and GFI, was adjusted only for whether a total or distal gastrectomy was performed

**The displayed values for the variable distal gastrectomy are from the multivariable analysis in which SM-M Z-score and distal gastrectomy were included only. The values for the variable distal gastrectomy in the multivariable analyses of the remaining 5 CT body composition parameters, SNAQ score and GFI, were comparable (data not shown)

VAT-M and SAT-M (amount of fat) were not significantly associated with the occurrence of a grade $\geq 3b$ postoperative complication (Table 4).

Radiation Attenuation

In the primary surgery group, SM-RA, VAT-RA, and SAT-RA (quality of muscle or fat) were not significantly associated with the occurrence of a grade $\geq 3b$ postoperative complication (Table 4).

SNAQ and GFI

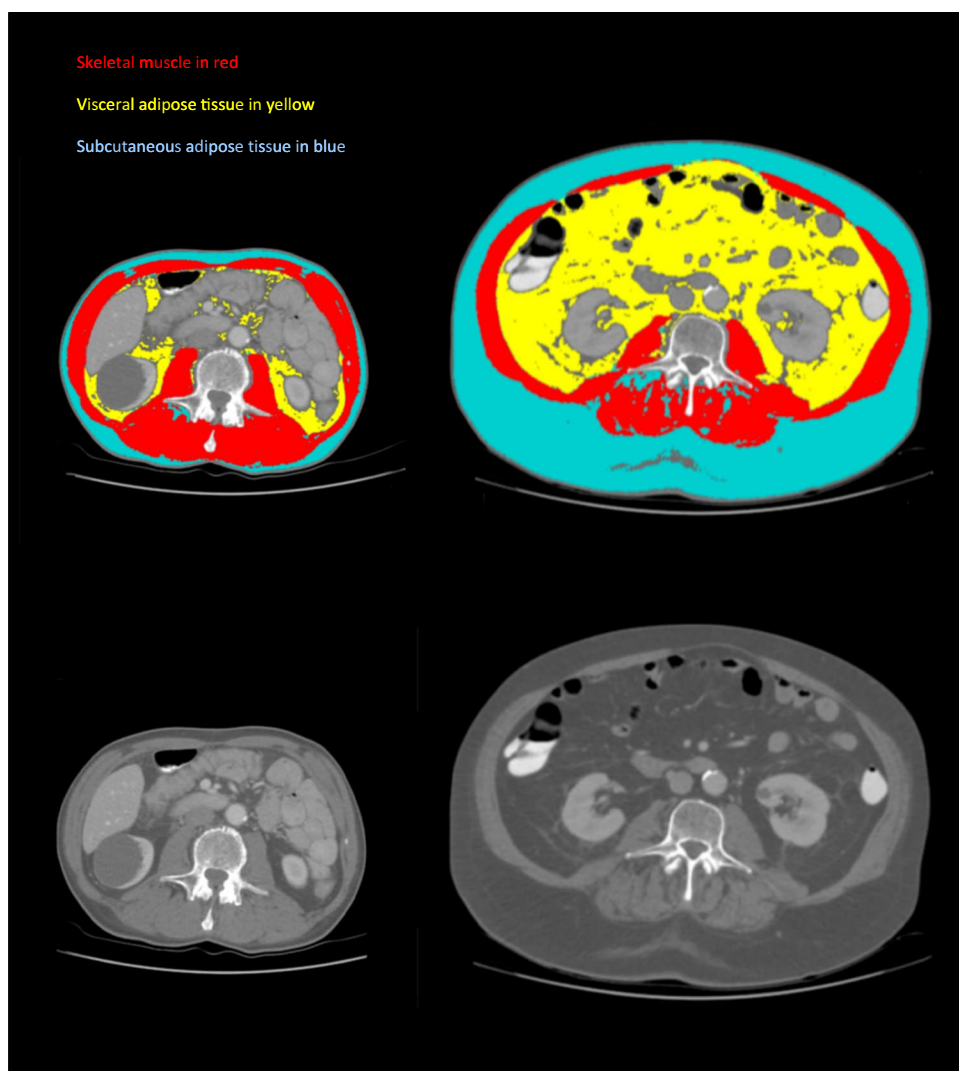
In the primary surgery group, a high SNAQ score (more malnutrition) was not associated with an increased risk of a grade $\geq 3b$ postoperative complication in univariable and

multivariable analyses (Table 4). However, a high GFI (more frailty) was significantly associated with an increased risk of a grade $\geq 3b$ postoperative complication in univariable (RR per extra point 1.30, 95% CI 1.17–1.45, $p < 0.001$) and multivariable analyses (RR per extra point 1.30, 95% CI 1.16–1.45, $p < 0.001$) (Table 4).

Total Versus Distal Gastrectomy

In the primary surgery group, distal gastrectomy showed a trend towards being associated with a lower risk of a grade $\geq 3b$ postoperative complication in univariable analysis (RR 0.50, 95% CI 0.21–1.21, $p = 0.123$). Hence, in multivariable analyses, each CT body composition parameter, the SNAQ score and GFI, was adjusted for whether a total or distal gastrectomy was performed (Table 4).

Fig. 3 Example CT scans. In the top 2 scans SM, VAT, and SAT are delineated in red, yellow, and blue, respectively. The bottom 2 scans are the same scans without delineations. On the left, a patient is displayed with low Z-scores for VAT-M/SAT-M (low amount of fat) and high Z-scores for VAT-RA/SAT-RA (lighter shade of gray, indicative of low triglyceride concentration). On the right, a patient is displayed with high Z-scores for VAT-M/SAT-M (high amount of fat) and low Z-scores for VAT-RA/SAT-RA (darker shade of gray, indicative of high triglyceride concentration). The body composition of the patient on the left is associated with a higher rate of severe postoperative complications



Discussion

This prospective multicenter study found that patients with a low skeletal muscle mass on preoperative restaging CT scan had a significantly higher risk of developing a major postoperative complication after preoperative chemotherapy followed by gastrectomy. Furthermore, patients with higher visceral or subcutaneous adipose tissue radiation attenuation (fat depleted of triglycerides) also had a significantly higher risk of developing a major postoperative complication. This is the first prospective multicenter study on the effects of body composition on postoperative complications in a Western population with predominantly advanced gastric cancer. These findings may help in better preoperative identification of high-risk patients.

A recent meta-analysis of Borggreve et al.⁹ concluded that patients with low skeletal muscle mass had an increased chance of developing (major) postoperative complications. However, only four retrospective studies from a Western

population were included in this meta-analysis.^{7,8,37,38} Three studies ($n = 36$, $n = 56$, and $n = 138$) found a statistically significant association between sarcopenia and an increased risk of postoperative complications,^{7,37,38} whereas the study by Tegels et al. ($n = 152$) did not.⁸ The Tegels et al. study results might be explained due to the retrospective single-center design, introducing possible selection and historical bias. In addition, patients were likely in a poor condition since only 46.3% received preoperative chemotherapy, which is recommended for all eligible patients in the Western advanced gastric cancer population since 2006.⁸ Lastly, binary cut-off values for sarcopenia were used from the Prado et al. study, which were based on obese Canadian patients and were not externally validated.^{12,13} The current study does not have these limitations, due to the prospective design and the fact that all body composition parameters were expressed as continuous Z-scores.

Low skeletal muscle radiation attenuation (SM-RA) indicates a greater accumulation of lipids/fat in and around

Table 4 Primary surgery group. Relative risks of having a postoperative grade $\geq 3b$ complication

	Primary surgery group						
	Univariable			Multivariable			
	RR	[95% CI]	<i>p</i>	RR	[95% CI]	<i>p</i>	
SM-M Z-score	1.47	[1.22–1.77]	< 0.001	1.58	[1.28–1.94]	< 0.001	*
VAT-M Z-score	1.06	[0.69–1.61]	0.798	1.17	[0.76–1.80]	0.466	*
SAT-M Z-score	0.96	[0.57–1.63]	0.883	1.04	[0.61–1.79]	0.875	*
SM-RA Z-score	1.50	[0.91–2.48]	0.109	0.59	[0.23–1.52]	0.277	*
VAT-RA Z-score	1.30	[0.91–1.85]	0.145	1.25	[0.85–1.83]	0.251	*
SAT-RA Z-score	1.23	[0.88–1.72]	0.221	1.25	[0.90–1.74]	0.178	*
SNAQ score	1.03	[0.86–1.24]	0.711	1.01	[0.85–1.20]	0.937	*
GFI	1.30	[1.17–1.45]	< 0.001	1.30	[1.16–1.45]	< 0.001	*
Additional year of age	0.99	[0.95–1.04]	0.810				
ASA score							
1 or 2	Ref	-	-				
3	1.44	[0.58–3.6]	0.432				
cT stage							
T1–T2	Ref	-	-				
T3–T4	1.44	[0.58–3.6]	0.438				
cN stage							
cN0	Ref	-	-				
cN1–cN3	0.81	[0.31–2.09]	0.660				
Distal gastrectomy	0.50	[0.21–1.21]	0.123	0.44	[0.18–1.06]	0.069	**
Laparoscopic surgery	0.59	[0.24–1.43]	0.243				

Poisson regressions with robust error variances were performed, producing a relative risk of having a postoperative grade $\geq 3b$ complication (yes/no) for each of the CT body composition parameters. Bold values indicate significance ($p < 0.05$)

RR relative risk; CI confidence interval; ref reference; SM skeletal muscle; VAT visceral adipose tissue; SAT subcutaneous adipose tissue; M mass; RA radiation attenuation; SNAQ Short Nutritional Assessment Questionnaire; GFI Groningen Frailty Index

*In multivariable analyses, each CT body composition parameter, the SNAQ score and GFI, was adjusted only for whether a total or distal gastrectomy was performed

**The displayed values for the variable distal gastrectomy are from the multivariable analysis in which SM-M Z-score and distal gastrectomy were included only. The values for the variable distal gastrectomy in the multivariable analyses of the remaining 5 CT body composition parameters, SNAQ score and GFI, were comparable (data not shown)

myocytes; this is called myosteosis.³⁹ The current study found no association between low skeletal muscle radiation attenuation (SM-RA) and postoperative complications after preoperative chemotherapy and gastrectomy. Literature on SM-RA in other abdominal cancers is ambiguous, with some studies demonstrating an association between low SM-RA and poor prognoses (possibly due to poor physical fitness),^{11,16,31,40} whereas other studies do not.^{17,41–43}

Lower visceral adipose tissue radiation attenuation (VAT-RA) and subcutaneous adipose tissue radiation attenuation (SAT-RA) indicate a higher concentration of lipids/fat in the adipose tissue.³⁰

This is a fairly new but very relevant outcome, which has been shown to be associated with worse outcomes in other abdominal cancers.^{17,44} In the current study on gastric cancer, low VAT-RA and SAT-RA (fat with high

triglyceride concentration) were associated with a lower risk of developing a major postoperative complication after preoperative chemotherapy followed by gastrectomy. This effect might be due to the better nutritional status of these patients and increased lipid reserves. Whether this finding of low VAT-RA and SAT-RA on CT scan can also be seen intraoperatively, for example, as fat that easily tears was not investigated in the current study, but might be of interest for further research (Fig. 3). Of note, VAT-M and SAT-M (quantity of fat) were previously reported to be associated with VAT-RA and SAT-RA, indicating that all these variables are indicators of the patients' lipid reserves. Indeed, VAT-M and SAT-M also showed a trend towards an association with major postoperative complications in the current study. Surprisingly, age and American Society of Anaesthesiologists (ASA) score were not significantly associated with

the risk of developing a major postoperative complication in the current trial cohort, underlining the added value of the CT body composition parameters in predicting postoperative complications. Furthermore, the main LOGICA paper from which this manuscript is a side study of showed no difference between laparoscopic and open gastrectomy with respect to postoperative complications (44% vs 42%, $p=0.91$).²¹ Moreover, both the laparoscopic and open study arm had comparable amount of patients who received total and distal gastrectomy, as the randomization was stratified for total/distal gastrectomy.

Importantly, since postoperative complications are associated with lower survival rates after gastroesophageal surgery, reducing postoperative complications is key.⁴⁵ Nevertheless, it lies beyond the scope of the current study to determine whether the effect of body composition is prognostic and can't be influenced (i.e., patients with a poor prognosis have poor preoperative body composition) or whether this effect can be influenced with therapeutic interventions (i.e., patients have poor postoperative outcomes due to poor preoperative body composition, improving body composition would improve outcomes).

Hence, based upon the current study data, the authors are not able to recommend whether additional nutritional replacement based on preoperative body composition is of additive value or not.

For patients undergoing primary surgery in the current study ($n=54$), a lower skeletal muscle (SM) Z-score was associated with a significantly lower risk of developing a major postoperative complication. Strikingly, an opposite effect was found in the preoperative chemotherapy followed by gastrectomy group ($n=112$). The primary surgery group result is presumably due to (selection) bias, though an actual effect cannot be excluded based upon the current study data. The authors believe results from the primary surgery group should be regarded with caution, since the primary surgery group is deemed to be representative of a more heterogeneous cohort of patients, who are in worse clinical condition and have a worse prognosis, compared to the more homogeneous preoperative chemotherapy group. Indeed, the primary surgery group has a higher mean age (75 versus 66 years), higher prevalence of cardiovascular comorbidity (70% versus 49%), higher number of distal gastrectomies performed (67% versus 55%), higher occurrence of a grade $\geq 3b$ postoperative complication (26% versus 8%), and higher occurrence of 1-year mortality (30% versus 18%). The majority of patients in the primary surgery group were older, had advanced cancer, and, according to Dutch guidelines, should receive perioperative chemotherapy if eligible.^{2,46} Hence, a proportion of the primary surgery group was likely in poor clinical condition, deeming them not eligible for preoperative chemotherapy. The current study results underline that future research should analyze patients undergoing

preoperative chemotherapy followed by surgery and patients undergoing the primary surgery as separate groups.

A higher frailty, indicated by the Groningen frailty index, showed a trend but no statistically significant association for the development of a major postoperative complication in the preoperative chemotherapy group.⁴⁷ In the primary surgery group, a higher GFI (more frailty) was significantly associated with reduced occurrence of a major postoperative complication. As mentioned in the previous paragraph, results from the primary surgery group should be regarded with caution due to possible (selection) bias. Furthermore, a higher SNAQ score was not predictive for the development of a major postoperative complication in both the preoperative chemotherapy and the primary surgery group. The SNAQ was originally designed as a hospital screening tool for malnutrition.

Current literature highlights the effects of gastric cancer in relations to malnutrition and the development of cancer cachexia. Malnutrition could occur through physical obstruction of the gastrointestinal tract or systemic inflammation due to cancer.^{43,48} In the current trial, malnourished patients' nutrition was preoperatively optimized according to standard care, based upon the national guidelines and the guidelines of Enhanced Recovery After Surgery (ERAS).^{22,49} Perhaps no association was found between the SNAQ score and major postoperative complications, due to the SNAQ being a subjective patient reported outcome, which was not specifically designed for scientific purposes in a trial cohort. The authors believe CT body composition measures are more objective and thus more reliable.

In the preoperative chemotherapy group, the restaging CT scans, and not the initial staging CT scans, were used to determine the patients' body composition. The restaging CT scans were expected to give the best uniform representation of the patients' condition during surgery, since body composition often changes during preoperative chemotherapy.^{19,50–52}

A limitation of the current study is the exclusion of 39 patients, due to the unavailability of a restaging CT scan. Since the current study was an observational prospective side study of the LOGICA trial, the restaging CT scan was not obligatory but made according to standard of care. Even though the multidisciplinary tumor board decided when a restaging CT scan did not have to be made, these missings appear to have occurred at random, since patient characteristics, treatment, and outcome did not change upon including these 39 patients (Online Resource 1). Thus, selection bias is presumably limited. It is considered a strength of the current study that the timing of the CT scans was reported in detail, which is not the case in the majority of studies in the recent Borggreve et al. meta-analysis.⁹

In addition, the average BMI of our cohort was relatively low (~ 25) when compared to that of the American, Canadian, or South American population. This is representative for

the typical West-European population with gastric cancer. Considering this, one could argue that the findings of this study cannot necessarily be extrapolated to populations with a higher BMI.³ The occurrence of any postoperative complication is used as an outcome in some body composition studies in literature, whereas other studies use only postoperative complications of a certain Clavien-Dindo grade.⁹ In the current study, a grade $\geq 3b$ complication was used, since predicting this grade preoperatively is deemed to be the most useful to guide clinical decision making. In the preoperative chemotherapy group, the point estimated relative risks for the SM-M, VAT-RA, and SAT-RA Z-scores were 0.47, 2.82, and 1.95, respectively. Hence, a patient with a VAT-RA of 1 standard deviation above the study population mean (belonging to the 16% highest VAT-RA values in the study population) would have almost 3 times the estimated chance of developing a grade $\geq 3b$ postoperative complication, compared to the patient with an average VAT-RA (Fig. 3).

Based upon the current study results, routine assessment and collection of CT body composition could be implemented in standard oncological care of gastric cancer patients. Once large prospectively collected datasets with continuous variables for CT body composition, known predictors such as age, ASA grade, and type of resection and postoperative complication rates, are available to serve as population reference values, body composition can be used to guide clinical decision making for the individual patient.⁵³ Body composition analysis could then be used during preoperative multidisciplinary tumor board discussions to objectively and reproducibly predict the relative risk of a major postoperative complication.

In conclusion, this prospective multicenter study demonstrated that low skeletal muscle mass and a high visceral or subcutaneous adipose tissue radiation attenuation (fat depleted of triglycerides) are strong predictors of developing a major postoperative complication in gastric cancer patients treated with preoperative chemotherapy followed by gastrectomy. Incorporating body composition analysis could lead to a better selection of at-risk patients for major postoperative complications and aid in treatment decision-making.

Collaborators (LOGICA study group)

Juul J.W. Tegels¹, Karel W.E. Hulsewe¹, Hylke J.F. Brenkman², Maarten F.J. Seesing², Grard A.P. Nieuwenhuijzen³, Jeroen EH Ponten³, Bas P.L. Wijnhoven⁴, Sjoerd M Lagarde⁴, Wobbe O de Steur⁵, Henk H Hartgrink⁵, Ewout A Kouwenhoven⁶, Marc J van Det⁶, Eelco B Wassenaar⁷, Edwin S van der Zaag⁷, Werner A Draaisma⁸, Ivo A.M.J. Broeders⁸, Suzanne S Gisbertz⁹, Mark I van Berge Henegouwen⁹, Hanneke W. M. van Laarhoven¹⁰.

Supplementary Information The online version contains supplementary material available at <https://doi.org/10.1007/s11605-022-05321-0>.

Acknowledgements The authors would like to thank each patient that participated in the LOGICA trial. In addition, the authors would like to thank ZonMW (The Netherlands Organization for Health Research and Development) for the funding of the original LOGICA trial (project number 837002502). Finally, the authors would like to thank everyone who contributed to data collection and local coordination at the 9 participating hospitals of the current study.

Author Contribution All authors equally contributed and met all four criteria as per Definition of Authorship of the International Committee of Medical Journal Editors.

Tweed: Protocol/project development, data collection and analysis, data analysis, manuscript writing and editing.

van der Veen: Protocol/project development, data collection and analysis, data analysis, manuscript writing and editing.

Tummers: Aiding in protocol/project development, data collection and management, data analysis, manuscript review and editing.

van Dijk: Aiding in protocol/project development, data collection and management, data analysis, manuscript review and editing.

Luyer: Aiding in protocol/project development, aiding in access for data collection, advisory role for data analysis, manuscript review and editing.

Ruurda: Aiding in protocol/project development, aiding in access for data collection, advisory role for data analysis, manuscript review and editing.

Hillegersberg: Aiding in protocol/project development, aiding in access for data collection, advisory role for data analysis, manuscript review and editing.

Stoot: Protocol/project development and supervision hereof, aiding in data collection and advisory role of analysis, advisory role data analysis, manuscript reviewing and editing, supervisor of this study as principal investigator.

Funding ZonMW (The Netherlands Organization for Health Research and Development) for the funding of the original LOGICA trial (project number 837002502).

Declarations

Conflict of Interest All authors and collaborators except the following have no conflict of interest to declare: Misha D. P. Luyer: Consulting or advisory role, Galvani, Medtronic; research funding, Dutch Cancer Foundation; travel, accommodations, expenses, Medtronic. Grard A. P. Nieuwenhuijzen: Consulting or advisory role, Medtronic; research funding, Dutch Cancer Foundation; travel, accommodations, expenses, Medtronic. Jelle P. Ruurda: Consulting or advisory role, Intuitive Surgical. Richard van Hillegersberg: Consulting or advisory role, Intuitive Surgical, Medtronic. Mark I van Berge Henegouwen: Consulting or advisory role, Medtronic; Johnson and Johnson; B. Braun; Alesi Surgical; Mylan; unrestricted grants from Olympus and Stryker. All grants and fees paid to institution.

Open Access This article is licensed under a Creative Commons Attribution 4.0 International License, which permits use, sharing, adaptation, distribution and reproduction in any medium or format, as long as you give appropriate credit to the original author(s) and the source, provide a link to the Creative Commons licence, and indicate if changes were made. The images or other third party material in this article are included in the article's Creative Commons licence, unless indicated otherwise in a credit line to the material. If material is not included in the article's Creative Commons licence and your intended use is not

permitted by statutory regulation or exceeds the permitted use, you will need to obtain permission directly from the copyright holder. To view a copy of this licence, visit <http://creativecommons.org/licenses/by/4.0/>.

References

- Bray F, Ferlay J, Soerjomataram I, Siegel RL, Torre LA, Jemal A: Global cancer statistics 2018: GLOBOCAN estimates of incidence and mortality worldwide for 36 cancers in 185 countries. *CA Cancer J Clin* 2018, 68(6):394-424.
- Cunningham D, Allum WH, Stenning SP, Thompson JN, Van de Velde CJ, Nicolson M, Scarffe JH, Lofts FJ, Falk SJ, Iveson TJ *et al*: Perioperative chemotherapy versus surgery alone for resectable gastroesophageal cancer. *The New England journal of medicine* 2006, 355(1):11-20.
- Auditing DIFC: Dutch Upper GI Cancer Audit (DUCA) In: *Annual*. 2017.
- Dindo D, Demartines N, Clavien PA: Classification of surgical complications: a new proposal with evaluation in a cohort of 6336 patients and results of a survey. *Annals of surgery* 2004, 240(2):205-213.
- Martin AN, Das D, Turrentine FE, Bauer TW, Adams RB, Zaydfudim VM: Morbidity and Mortality After Gastrectomy: Identification of Modifiable Risk Factors. *Journal of gastrointestinal surgery : official journal of the Society for Surgery of the Alimentary Tract* 2016, 20(9):1554-1564.
- Pan Y, Chen K, Yu WH, Maher H, Wang SH, Zhao HF, Zheng XY: Laparoscopic gastrectomy for elderly patients with gastric cancer: A systematic review with meta-analysis. *Medicine (Baltimore)* 2018, 97(8):e0007.
- O'Brien S, Twomey M, Moloney F, Kavanagh RG, Carey BW, Power D, Maher MM, O'Connor OJ, Ó'Súilleabháin C: Sarcopenia and Post-Operative Morbidity and Mortality in Patients with Gastric Cancer. *J Gastric Cancer* 2018, 18(3):242-252.
- Tegels JJ, van Vugt JL, Reisinger KW, Hulsewe KW, Hoofwijk AG, Derikx JP, Stoot JH: Sarcopenia is highly prevalent in patients undergoing surgery for gastric cancer but not associated with worse outcomes. *Journal of surgical oncology* 2015, 112(4):403-407.
- Borggreve AS, den Boer RB, van Boxel GI, de Jong PA, Veldhuis WB, Steenhagen E, van Hillegersberg R, Ruurda JP: The Predictive Value of Low Muscle Mass as Measured on CT Scans for Postoperative Complications and Mortality in Gastric Cancer Patients: A Systematic Review and Meta-Analysis. *J Clin Med* 2020, 9(1).
- Baracos VE, Reiman T, Mourtzakis M, Gioulbasanis I, Antoun S: Body composition in patients with non-small cell lung cancer: a contemporary view of cancer cachexia with the use of computed tomography image analysis. *The American journal of clinical nutrition* 2010, 91(4):1133s-1137s.
- Gustafsson UO, Scott MJ, Schwenk W, Demartines N, Roulin D, Francis N, McNaught CE, Macfie J, Liberman AS, Soop M *et al*: Guidelines for perioperative care in elective colonic surgery: Enhanced Recovery After Surgery (ERAS(R)) Society recommendations. *World J Surg* 2013, 37(2):259-284.
- Prado CM, Lieffers JR, McCargar LJ, Reiman T, Sawyer MB, Martin L, Baracos VE: Prevalence and clinical implications of sarcopenic obesity in patients with solid tumours of the respiratory and gastrointestinal tracts: a population-based study. *The Lancet Oncology* 2008, 9(7):629-635.
- Reisinger KW, van Vugt JL, Tegels JJ, Snijders C, Hulsewe KW, Hoofwijk AG, Stoot JH, Von Meyenfeldt MF, Beets GL, Derikx JP *et al*: Functional compromise reflected by sarcopenia, frailty, and nutritional depletion predicts adverse postoperative outcome after colorectal cancer surgery. *Annals of surgery* 2015, 261(2):345-352.
- Bahat G, Tufan A, Tufan F, Kilic C, Akpınar TS, Kose M, Erten N, Karan MA, Cruz-Jentoft AJ: Cut-off points to identify sarcopenia according to European Working Group on Sarcopenia in Older People (EWGSOP) definition. *Clinical nutrition (Edinburgh, Scotland)* 2016, 35(6):1557-1563.
- Cruz-Jentoft AJ, Baeyens JP, Bauer JM, Boirie Y, Cederholm T, Landi F, Martin FC, Michel JP, Rolland Y, Schneider SM *et al*: Sarcopenia: European consensus on definition and diagnosis: Report of the European Working Group on Sarcopenia in Older People. *Age Ageing* 2010, 39(4):412-423.
- West MA, van Dijk DPJ, Gleadowe F, Reeves T, Primrose JN, Abu Hilal M, Edwards MR, Jack S, Rensen SSS, Grocott MPW *et al*: Myosteatosis is associated with poor physical fitness in patients undergoing hepatopancreatobiliary surgery. *J Cachexia Sarcopenia Muscle* 2019, 10(4):860-871.
- van Dijk DPJ, Krill M, Farshidfar F, Li T, Rensen SS, Olde Damink SWM, Dixon E, Sutherland FR, Ball CG, Mazurak VC *et al*: Host phenotype is associated with reduced survival independent of tumour biology in patients with colorectal liver metastases. *J Cachexia Sarcopenia Muscle* 2019, 10(1):123-130.
- van Baar H, Winkels RM, Brouwer JGM, Posthuma L, Bours MJL, Weijenberg MP, Boshuizen HC, van Zutphen M, van Duijnhoven FJB, Kok DE *et al*: Associations of Abdominal Skeletal Muscle Mass, Fat Mass, and Mortality among Men and Women with Stage I-III Colorectal Cancer. *Cancer Epidemiol Biomarkers Prev* 2020, 29(5):956-965.
- Hagens ERC, Feenstra ML, van Egmond MA, van Laarhoven HWM, Hulshof M, Boshier PR, Low DE, van Berge Henegouwen MI, Gisbertz SS: Influence of body composition and muscle strength on outcomes after multimodal oesophageal cancer treatment. *J Cachexia Sarcopenia Muscle* 2020, 11(3):756-767.
- Russo A, Li P, Strong VE: Differences in the multimodal treatment of gastric cancer: East versus west. *Journal of surgical oncology* 2017, 115(5):603-614.
- Arjen van der Veen HJFB, Maarten F. J. Seusing, Leonie Haverkamp, Misha D. P. Luyer, Grard A. P. Nieuwenhuijzen, Jan H. M. B. Stoot, Juul J. W. Tegels, Bas P. L. Wijnhoven, Sjoerd M. Lagarde, Wobbe O. de Steur, Henk H. Hartgrink, Ewout A. Kouwenhoven, Eelco B. Wassenaar, Werner A. Draaisma, Suzanne S. Gisbertz, Donald L. van der Peet, Anne M. May, Jelle P. Ruurda, Richard van Hillegersberg, LOGICA Study Group.: Laparoscopic Versus Open Gastrectomy for Gastric Cancer (LOGICA): A Multicenter Randomized Clinical Trial. *Journal of Clinical Oncology* 2021, 39 (9):978-989
- Mortensen K, Nilsson M, Slim K, Schafer M, Mariette C, Braga M, Carli F, Demartines N, Griffin SM, Lassen K: Consensus guidelines for enhanced recovery after gastrectomy: Enhanced Recovery After Surgery (ERAS(R)) Society recommendations. *The British journal of surgery* 2014, 101(10):1209-1229.
- Kruizenga HM, Seidell JC, de Vet HC, Wierdsma NJ, van Bokhorst-de van der Schueren MA: Development and validation of a hospital screening tool for malnutrition: the short nutritional assessment questionnaire (SNAQ). *Clin Nutr* 2005, 24(1):75-82.
- Steverink N, Slaets JJP, Schuurmans H, van Lis M: Measuring frailty: Developing and testing the GFI (Groningen frailty indicator). *Gerontologist* 2001, 41:236-237.
- DenOtter TD, Schubert J: Hounsfield Unit. In: *StatPearls*. edn. Treasure Island FL: © 2020, StatPearls Publishing LLC.; 2020.
- Dello SA, Lodewick TM, van Dam RM, Reisinger KW, van den Broek MA, von Meyenfeldt MF, Bemelmans MH, Olde Damink SW, Dejong CH: Sarcopenia negatively affects preoperative total functional liver volume in patients undergoing liver resection. *HPB (Oxford)* 2013, 15(3):165-169.
- Zhuang CL, Shen X, Huang YY, Zhang FM, Chen XY, Ma LL, Chen XL, Yu Z, Wang SL, Zhang Y *et al*: Myosteatosis predicts

- prognosis after radical gastrectomy for gastric cancer: A propensity score-matched analysis from a large-scale cohort. *Surgery* 2019, 166(3):297-304.
28. Zhang Y, Wang JP, Wang XL, Tian H, Gao TT, Tang LM, Tian F, Wang JW, Zheng HJ, Zhang L *et al*: Computed tomography-quantified body composition predicts short-term outcomes after gastrectomy in gastric cancer. *Curr Oncol* 2018, 25(5):e411-e422.
 29. Aubrey J, Esfandiari N, Baracos VE, Buteau FA, Frenette J, Putman CT, Mazurak VC: Measurement of skeletal muscle radiation attenuation and basis of its biological variation. *Acta Physiol (Oxf)* 2014, 210(3):489-497.
 30. Goodpaster BH, Kelley DE, Thaete FL, He J, Ross R: Skeletal muscle attenuation determined by computed tomography is associated with skeletal muscle lipid content. *J Appl Physiol (1985)* 2000, 89(1):104-110.
 31. van Dijk DP, Bakens MJ, Coolen MM, Rensen SS, van Dam RM, Bours MJ, Weijenberg MP, Dejong CH, Olde Damink SW: Low skeletal muscle radiation attenuation and visceral adiposity are associated with overall survival and surgical site infections in patients with pancreatic cancer. *J Cachexia Sarcopenia Muscle* 2017, 8(2):317-326.
 32. Mourtzakis M, Prado CM, Lieffers JR, Reiman T, McCargar LJ, Baracos VE: A practical and precise approach to quantification of body composition in cancer patients using computed tomography images acquired during routine care. *Appl Physiol Nutr Metab* 2008, 33(5):997-1006.
 33. Katayama H, Kurokawa Y, Nakamura K, Ito H, Kanemitsu Y, Masuda N, Tsubosa Y, Satoh T, Yokomizo A, Fukuda H *et al*: Extended Clavien-Dindo classification of surgical complications: Japan Clinical Oncology Group postoperative complications criteria. *Surg Today* 2016, 46(6):668-685.
 34. Low DE, Alderson D, Ceconello I, Chang AC, Darling GE, D'Journo XB, Griffin SM, Holscher AH, Hofstetter WL, Jobe BA *et al*: International Consensus on Standardization of Data Collection for Complications Associated With Esophagectomy: Esophagectomy Complications Consensus Group (ECCG). *Annals of surgery* 2015, 262(2):286-294.
 35. Zou G: A modified poisson regression approach to prospective studies with binary data. *Am J Epidemiol* 2004, 159(7):702-706.
 36. Knol MJ, Le Cessie S, Algra A, Vandenbroucke JP, Groenwold RH: Overestimation of risk ratios by odds ratios in trials and cohort studies: alternatives to logistic regression. *CMAJ* 2012, 184(8):895-899.
 37. Mirkin KA, Luke FE, Gangi A, Pimiento JM, Jeong D, Hollenbeck CS, Wong J: Sarcopenia related to neoadjuvant chemotherapy and perioperative outcomes in resected gastric cancer: a multi-institutional analysis. *J Gastrointest Oncol* 2017, 8(3):589-595.
 38. Sierzega M, Chrzan R, Wiktorowicz M, Kolodziejczyk P, Richter P: Prognostic and predictive implications of sarcopenia in Western patients undergoing gastric resections for carcinoma of the stomach. *Journal of surgical oncology* 2019, 120(3):473-482.
 39. Bhullar AS, Anoveros-Barrera A, Dunichand-Hoedl A, Martins K, Bigam D, Khadaroo RG, McMullen T, Bathe OF, Putman CT, Clandinin MT *et al*: Lipid is heterogeneously distributed in muscle and associates with low radiodensity in cancer patients. *J Cachexia Sarcopenia Muscle* 2020, 11(3):735-747.
 40. Fujiwara N, Nakagawa H, Kudo Y, Tateishi R, Taguri M, Watadani T, Nakagomi R, Kondo M, Nakatsuka T, Minami T *et al*: Sarcopenia, intramuscular fat deposition, and visceral adiposity independently predict the outcomes of hepatocellular carcinoma. *J Hepatol* 2015, 63(1):131-140.
 41. Malietzis G, Johns N, Al-Hassi HO, Knight SC, Kennedy RH, Fearon KC, Aziz O, Jenkins JT: Low Muscularity and Myosteatosis Is Related to the Host Systemic Inflammatory Response in Patients Undergoing Surgery for Colorectal Cancer. *Annals of surgery* 2016, 263(2):320-325.
 42. Malietzis G, Currie AC, Athanasiou T, Johns N, Anyamene N, Glynne-Jones R, Kennedy RH, Fearon KC, Jenkins JT: Influence of body composition profile on outcomes following colorectal cancer surgery. *The British journal of surgery* 2016, 103(5):572-580.
 43. McSorley ST, Black DH, Horgan PG, McMillan DC: The relationship between tumour stage, systemic inflammation, body composition and survival in patients with colorectal cancer. *Clinical nutrition (Edinburgh, Scotland)* 2018, 37(4):1279-1285.
 44. van Dijk DPJ, Zhao J, Kemter K, Baracos VE, Dejong CHC, Rensen SS, Olde Damink SWM: Ectopic fat in liver and skeletal muscle is associated with shorter overall survival in patients with colorectal liver metastases. *J Cachexia Sarcopenia Muscle* 2021.
 45. van der Werf LR, Wijnhoven BPL, Franssen LFC, van Sandick JW, Nieuwenhuijzen GAP, Busweiler LAD, van Hillegersberg R, Wouters M, Luyer MDP, van Berge Henegouwen MI: A National Cohort Study Evaluating the Association Between Short-term Outcomes and Long-term Survival After Esophageal and Gastric Cancer Surgery. *Annals of surgery* 2019, 270(5):868-876.
 46. Al-Batran SE, Homann N, Pauligk C, Goetze TO, Meiler J, Kasper S, Kopp HG, Mayer F, Haag GM, Luley K *et al*: Perioperative chemotherapy with fluorouracil plus leucovorin, oxaliplatin, and docetaxel versus fluorouracil or capecitabine plus cisplatin and epirubicin for locally advanced, resectable gastric or gastro-oesophageal junction adenocarcinoma (FLOT4): a randomised, phase 2/3 trial. *Lancet* 2019, 393(10184):1948-1957.
 47. Tegels JJ, de Maat MF, Hulsewe KW, Hoofwijk AG, Stoot JH: Value of geriatric frailty and nutritional status assessment in predicting postoperative mortality in gastric cancer surgery. *Journal of gastrointestinal surgery : official journal of the Society for Surgery of the Alimentary Tract* 2014, 18(3):439-445; discussion 445-436.
 48. Baracos VE, Martin L, Korc M, Guttridge DC, Fearon KCH: Cancer-associated cachexia. *Nat Rev Dis Primers* 2018, 4:17105.
 49. Maagcarcinoom [<https://www.oncoline.nl/maagcarcinoom>]. Accessed 12-08-2020
 50. Cooper AB, Slack R, Fogelman D, Holmes HM, Petzel M, Parker N, Balachandran A, Garg N, Ngo-Huang A, Varadhachary G *et al*: Characterization of Anthropometric Changes that Occur During Neoadjuvant Therapy for Potentially Resectable Pancreatic Cancer. *Ann Surg Oncol* 2015, 22(7):2416-2423.
 51. Lyon TD, Frank I, Takahashi N, Boorjian SA, Moynagh MR, Shah PH, Tarrell RF, Chevillat JC, Viers BR, Tollefson MK: Sarcopenia and Response to Neoadjuvant Chemotherapy for Muscle-Invasive Bladder Cancer. *Clin Genitourin Cancer* 2019, 17(3):216-222 e215.
 52. den Boer RB, Jones KI, Ash S, van Boxel GI, Gillies RS, O'Donnell T, Ruurda JP, Sgromo B, Silva MA, Maynard ND: Impact on postoperative complications of changes in skeletal muscle mass during neoadjuvant chemotherapy for gastro-oesophageal cancer. *BJS Open* 2020, 4(5):847-854.
 53. Nelen SD, Bosscha K, Lemmens V, Hartgrink HH, Verhoeven RHA, de Wilt JHW: Morbidity and mortality according to age following gastrectomy for gastric cancer. *The British journal of surgery* 2018, 105(9):1163-1170.
- Publisher's Note** Springer Nature remains neutral with regard to jurisdictional claims in published maps and institutional affiliations.
- This paper was presented at the European Association for Endoscopic Surgery (EAES) in Barcelona on November 26th, 2021.