



RESEARCH

Open Access

Factors predicting prolonged empirical antifungal treatment in critically ill patients

Mohamed Zein¹, Erika Parmentier-Decrucq¹, Amer Kalaoun¹, Olivier Bouton¹, Frédéric Wallyn¹, Anne Baranzelli¹, Dia Elmanser¹, Boualem Sendid^{2,3} and Saad Nseir^{1,3*}

Abstract

Objective: To determine the incidence, risk factors, and impact on outcome of prolonged empirical antifungal treatment in ICU patients.

Methods: Retrospective observational study performed during a one-year period. Patients who stayed in the ICU >48 h, and received empirical antifungal treatment were included. Patients with confirmed invasive fungal disease were excluded. Prolonged antifungal treatment was defined as percentage of days in the ICU with antifungals > median percentage in the whole cohort of patients.

Results: Among the 560 patients hospitalized for >48 h, 153 (27%) patients received empirical antifungal treatment and were included in this study. Fluconazole was the most frequently used antifungal (46% of study patients). Median length of ICU stay was 19 days (IQR 8, 34), median duration of antifungal treatment was 8 days (IQR 3, 16), and median percentage of days in the ICU with antifungals was 48% (IQR 25, 80). Seventy-seven patients (50%) received prolonged empirical antifungal treatment. Chemotherapy (OR [95% CI] 2.6 [1.07-6.69], $p = 0.034$), and suspected infection at ICU admission (3.1 [1.05-9.48], $p = 0.041$) were independently associated with prolonged empirical antifungal treatment.

Duration of mechanical ventilation and ICU stay were significantly shorter in patients with prolonged empirical antifungal treatment compared with those with no prolonged empirical antifungal treatment. However, ICU mortality was similar in the two groups (46 versus 52%, $p = 0.62$).

Conclusion: Empirical antifungal treatment was prescribed in a large proportion of study patients. Chemotherapy, and suspicion of infection at ICU admission are independently associated with prolonged empirical antifungal treatment.

Keywords: Antifungal treatment, Empirical treatment, Fungal infection, Invasive fungal disease, De-escalation

Introduction

Invasive fungal disease is common in critically ill patients. Based on the results of the large international EPIC II study [1], fungi are responsible for 19.4% of all documented infections in the intensive care unit (ICU). These patients have several risk factors for fungal infection, including invasive procedures, prolonged antimicrobial treatment, fungal colonization, abdominal surgery, parental nutrition, and immunosuppression [2,3]. Substantial morbidity and mortality were reported in ICU patients

with confirmed invasive fungal disease. Prompt appropriate antifungal treatment is a key factor in the prognosis of ICU patients suffering from invasive fungal disease [4]. Therefore, empirical antifungal treatment is frequently prescribed to these patients when fungal infection is suspected. However, the diagnosis of invasive fungal disease is still extremely difficult in this population, because of the absence of an accurate non invasive diagnostic method [5]. In addition, no clear evidence-based recommendations are available on how and when to de-escalate antifungal treatment. Therefore, empirical antifungal treatment is frequently used for a long period of time in the ICU. Prolonged antifungal treatment is responsible for

* Correspondence: s-nseir@chru-lille.fr

¹Pôle de Réanimation Médicale, CHRU de Lille, Hôpital Salengro, Lille, France

³Université Lille Nord de France, Lille, France

Full list of author information is available at the end of the article

higher hospital cost, and might promote antifungal resistance.

To our knowledge, few data are available on prolonged empirical antifungal treatment. A recent study was conducted to determine the incidence of systemic antifungal use in critically ill patients without invasive fungal disease [6]. However, no information was provided on prolonged empirical antifungal treatment incidence. In addition, risk factors for prolonged duration of antifungal treatment and its impact on outcome are unknown. Further, prolonged antifungal use is a well-known risk factor for emergence of antifungal resistance [7]. Identifying the incidence, risk factors and impact on outcome of prolonged empirical antifungal treatment might be helpful for future studies aiming at reducing the duration of this treatment. Therefore, we conducted this retrospective observational study to determine, incidence, risk factors, and impact on outcome of prolonged antifungal treatment.

Patients and methods

This retrospective study was conducted in a 30-bed medical and surgical university ICU during a one-year period (from January 2011 to January 2012). Informed consent was not required by the local IRB because of the retrospective non interventional design of the study.

All adult patients hospitalized in the ICU for more than 48 hours who received empirical antifungal treatment were eligible for this study. Patients with confirmed invasive fungal disease were excluded.

Study patients

In patients with suspected invasive fungal infection, blood cultures were systematically performed before empirical antifungal treatment [8]. In addition, other microbiological specimens were performed based on patient's clinical status. *Candida* colonization index was not routinely performed. Antifungal treatment was based on written local guidelines. Briefly, fluconazole, or caspofungin were recommended as initial therapy for suspected invasive candidiasis in non neutropenic patients. Lipid formulation of amphotericin B was recommended as alternative if there is intolerance to other antifungals. In neutropenic patients, lipid formulation of amphotericin B, caspofungin, or voriconazole were recommended for empirical treatment of suspected candidiasis. No prophylactic antifungal treatment was used during the study period.

Definitions

Prolonged antifungal treatment was defined as percentage of days in the ICU with antifungals > median percentage in the whole cohort of patients. Recent hospitalization was defined as any hospitalization for >48 h during the 3 months preceding ICU admission. Immunosuppression was defined as neutropenia (<500/ μ L), chemotherapy

during the last three months, or long-term corticosteroids use. Prior antimicrobial, and antifungal treatment, was defined as any treatment by these agents during the 3 months preceding ICU admission.

Data collection

The following data were collected at ICU admission: age, gender, simplified acute physiology score II, logistic organ dysfunction score, location before ICU admission (other wards, other ICUs, home), recent hospitalization, category of admission (medical, surgical, trauma), comorbidities (diabetes mellitus, chronic heart failure, chronic obstructive pulmonary disease, cirrhosis, chronic dialysis, immunosuppression), McCabe score, causes for ICU admission, suspected infection at ICU admission, prior antibiotic treatment, and prior antifungal treatment. In addition, the following data were collected during ICU stay: number of sites colonized with fungi, antibiotic treatment, mechanical ventilation, central venous catheter, arterial catheter, dialysis, duration of ICU stay, duration of antifungal treatment, parental nutrition, and ICU mortality.

Statistical analysis

The percentage of days in the ICU with antifungal treatment was calculated for each patient, as well as median (25th, 75th IQR) percentage in the study cohort. Patients were classified as having a prolonged duration of antifungal treatment if they had a percentage of days in the ICU with antifungal treatment > median percentage of days in the ICU with antifungals, or as not having a prolonged duration of antifungal treatment if they had a percentage of days in the ICU with antifungal treatment \leq median percentage of days in the ICU with antifungals.

Statistical analysis was performed using SPSS software (version 15.0, SPSS, Chicago, IL). Results of qualitative variables are presented as numbers (percentage). Distribution of quantitative variables was tested. Normally and non normally distributed variables are expressed as mean \pm SD and median (25th, 75th IQR); respectively.

To determine risk factors for prolonged empirical antifungal treatment, patients with prolonged empirical antifungal treatment were compared with patients with no prolonged empirical antifungal treatment by univariate analysis. Qualitative variables were compared using chi² or Fischer's exact test, as appropriate. Quantitative variables were compared using Student's t test or Mann Whitney U test, as appropriate. Multivariate analysis was used to determine risk factors independently associated with prolonged empirical antifungal treatment. All data from univariate analysis with *p* values <0.1 were incorporated in the multivariate conditional logistic regression analysis. Backward stepwise was used in the logistic

regression model. The Hosmer-Lemeshow test was used to determine the model goodness-of-fit.

Results

Among the 560 patients hospitalized >48 h during the study period, 161 (28%) patients were eligible for this study, and 153 (27%) patients were included. Eight (1.4%) patients were excluded for confirmed invasive fungal disease (8 candidemia) (Figure 1). Fluconazole was the most frequently used antifungal (46% of study patients), followed by caspofungin (39%), voriconazole (12%), and liposomal amphotericin B (3%). Four patients (2%) received more than one antifungal during their ICU stay.

In study patients, median length of ICU stay was 19 days (IQR 8, 34), median duration of antifungal treatment was 8 days (IQR 3, 16), and median percentage of days in the ICU with antifungals was 48% (IQR 25, 80). Seventy-seven patients (50%) received prolonged empirical antifungal treatment. Patient characteristics are presented in Tables 1, and 2. 35 patients (22% of study patients, and 6% of the whole cohort) received empirical antifungal treatment before ICU admission.

Factors associated with prolonged empirical antifungal treatment by univariate analysis

At ICU admission, chemotherapy, corticosteroid use, hospital-acquired pneumonia, suspected infection, and prior antifungal treatment were significantly more frequent in patients with prolonged antifungal treatment compared with those with no prolonged antifungal treatment.

During ICU stay, percentage of patients with arterial catheter, duration of central venous catheter use, and arterial catheter use were significantly lower in patients with prolonged antifungal treatment compared with those with no prolonged antifungal treatment.

Factors associated with prolonged empirical antifungal treatment by multivariate analysis

Chemotherapy (OR [95% CI] 2.6 [1.07-6.69], $p = 0.034$), and infection at ICU admission (3.1 [1.05-9.48], $p = 0.041$) were independently associated with prolonged

empirical antifungal treatment. Hosmer-Lemeshow test was not significant ($p = 0.579$), confirming the model goodness-of-fit.

Impact of prolonged empirical antifungal treatment on outcome

Duration of mechanical ventilation (12.5 [4,9] versus 20 d (0, 36), $p = 0.007$) and ICU stay (18 [5-28] versus 24 d [15-38], $p = 0.001$) were significantly shorter in patients with prolonged empirical antifungal treatment compared with those with non prolonged empirical antifungal treatment. However, ICU mortality was similar in the two groups (46 versus 52%, $p = 0.62$).

Discussion

Our results suggest that empirical antifungal treatment is used in about one third of ICU patients hospitalized for more than 48 h, during 48% of their ICU stay. Chemotherapy, and suspicion of infection at ICU admission were independently associated with prolonged empirical antifungal treatment. Although duration of mechanical ventilation and ICU stay were significantly shorter in patients with prolonged empirical antifungal treatment compared with those with no prolonged empirical antifungal treatment, no significant impact of prolonged empirical antifungal treatment was found on ICU mortality.

To the best of our knowledge, our study is the first to report on the incidence of prolonged use of empirical antifungal treatment. Empirical antifungal treatment was used in a large percentage (27%) of ICU patients, during a large percentage (48%) of their ICU stay. A recent Spanish multicenter study [9] analyzed 8240 antifungal prescriptions during a 5 year-period. An increase in antifungal use was reported to the year 2008, with a subsequent stabilization. The median duration of antifungal treatment was 8 days, which is in line with our results. However, no information was provided on empirical antifungal use, or on duration of ICU stay. Another recent one-day cross sectional multicenter study was performed to determine the incidence of ICU patients without documented invasive fungal disease who receive systematic antifungal treatment [6]. Among the 2047 included patients, 5.2% received antifungal treatment without confirmed invasive fungal disease. At least two reasons could explain the lower rate of empirical antifungal use found in this study compared with ours. First, this study was a one day study. Therefore, antifungals stopped before, or started after the study's day were not taken into account. Second, patients with short duration (<48H) of ICU stay were not excluded from that study. These patients rarely receive antifungal treatment.

Chemotherapy, and suspicion of infection at ICU admission were identified as independent risk factors for

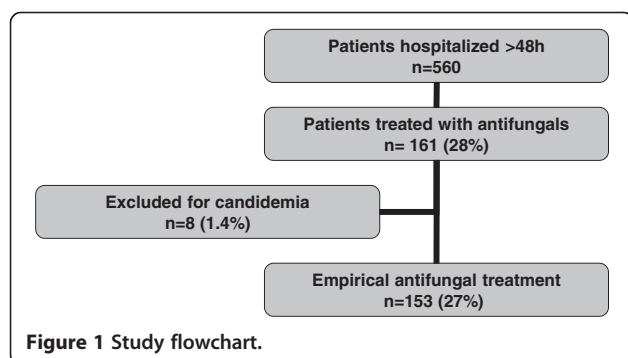


Table 1 Risk factors for prolonged empirical antifungal treatment at ICU admission

Patient characteristics	Prolonged empirical antifungal treatment		p value
	Yes n = 77	No n = 76	
Age, years, mean ± SD	55 ± 14	60 ± 15	0.429
Male	42 (54)	49 (64)	0.277
SAPS II	54 (35, 71)	52 (37, 73)	0.518
LOD score	7 (4,10)	7.5 (4,11)	0.423
Location before ICU admission			0.963
Other wards	60 (78)	58 (76)	
Other ICUs	7 (9)	7 (9)	
Home	10 (13)	11 (14)	
Recent hospitalization	34 (44)	22 (28)	0.058
Category of admission			0.500
Medical	58 (75)	51 (67)	
Surgical	18 (23)	23 (30)	
Trauma	1 (1)	2 (2)	
Comorbidities			
Diabetes	14 (18)	19 (25)	0.305
Chronic heart failure	15 (19)	9 (12)	0.192
COPD	15 (19)	16 (21)	0.809
Cirrhosis	4 (5)	4 (5)	>0.999
Chronic dialysis	6 (7)	5 (6)	0.771
Immunosuppression			
Neutropenia	14 (18)	7 (9)	0.111
Chemotherapy	22 (28)	8 (10)	0.005*
Corticosteroids	21 (27.3)	9 (12)	0.017*
McCabe score			0.137
Non fatal disease	24 (31)	34 (44)	
Ultimately fatal disease	23 (29)	14 (18)	
Rapidly fatal disease	30 (38)	28 (36)	
Causes for ICU admission**			
Septic shock	42 (54)	36 (47)	0.374
Acute exacerbation of COPD	21 (27)	14 (18)	0.192
ARDS	13 (16)	20 (26)	0.156
CAP	11 (14)	14 (18)	0.489
HAP	24 (31)	12 (15)	0.024*
Congestive heart failure	5 (6)	2 (2)	0.442
Poisoning	2 (2)	8 (10)	0.056
Neurologic failure	2 (2)	6 (7)	0.167
Infection on admission	72 (93)	58 (76)	0.002*
Prior antibiotic treatment	45 (58)	33 (43)	0.063
Prior antifungal treatment	25 (32.5)	10 (13)	0.004*

*OR (95% CI) 3.3 (1.3-8.1), 2.7 (1.1-6.4), 2.4 (1.1-5.2), 4.4 (1.5-12.7), 3.1 (1.4-7.1); respectively.

**Several patients had more than one cause for ICU admission.

Data are n (%), or median (25th, 75th IQR), unless otherwise specified.

SAPS, simplified acute physiology score; LOD, logistic organ dysfunction; ICU, intensive care unit; COPD, chronic obstructive pulmonary disease; ARDS, acute respiratory distress syndrome; CAP, community acquired pneumonia; HAP, hospital acquired pneumonia.

Table 2 Patient characteristics during ICU stay

Patient characteristics	Prolonged empirical antifungal treatment		p value
	Yes n = 77	No n = 76	
Multifocal fungal colonization	24 (31)	35 (46)	0.076
Antimicrobial treatment	73 (94)	70 (93)	0.744
Mechanical ventilation	59 (76)	67 (88)	0.059
Duration of mechanical ventilation, d	12.5 (4, 25)	20 (0, 36)	0.007
Central venous catheter	69 (89)	71 (93)	0.396
Duration of central venous catheter use, d	13 (4, 20)	18 (10, 25)	0.015
Arterial catheter	62 (81)	71 (93)	0.025*
Duration of arterial catheter use, d	8 (3, 15)	13 (10, 20)	0.002
Dialysis	30 (39)	28 (37)	0.97
Parenteral nutrition	26 (33)	29 (38)	0.571
Duration of antifungal treatment, d	9 (4, 19)	6 (2, 11)	0.003
Percentage of days in the ICU with antifungals	80 (65, 100)	25 (13, 35)	<0.001
Length of ICU stay, d	14 (5, 27)	22 (14, 39)	0.001
ICU mortality	36 (46)	39 (52)	0.518

*OR (95% CI) 0.3 (0.1-0.9).

Data are n (%), or median (25th, 75th IQR).
 ICU, intensive care unit.

prolonged empirical antifungal use. These factors might reflect patients with increased risk for invasive fungal disease. Previous studies reported that immunosuppressed patients, and those with other infections and prior antibiotic treatment are at higher risk for invasive fungal disease [10-13]. However, none of these factors is modifiable.

There is no consensual definition for prolonged antifungal treatment, probably because this duration could be very different according to ICU population and local protocols. In order to adjust for duration of ICU stay, and to take into account the number of days in the ICU without antifungals, we used the median of percentage of days in the ICU with antifungals to define prolonged antifungal treatment. This definition is probably more accurate than total duration of antifungal treatment, or days in the ICU without antifungals. For example, two patients who receive the same duration of antifungal treatment (7 days) in the ICU could have a percentage of days in the ICU with antifungals of 100% and 50%, if they are discharged at day 7, and day 14; respectively. This adjustment was already used for antimicrobials in previous studies [14,15].

Duration of mechanical ventilation and ICU stay were significantly shorter in patients with prolonged empirical antifungal treatment compared with those with no prolonged empirical antifungal treatment. This result could be explained by the definition we used for prolonged antifungal treatment. Based on this definition, the shorter duration of ICU stay, the higher percentage of days with empirical antifungal treatment. However, no significant

impact of prolonged empirical antifungal treatment was found on ICU mortality, suggesting that prolonged empirical antifungal treatment is probably not justified in this population. Further, percentage of patients with arterial catheter, and those under mechanical ventilation are higher in patients with no prolonged empirical antifungal treatment compared with those with prolonged antifungal treatment. The explanation for these findings is probably the longer duration of ICU stay in patients with no prolonged duration of antifungal treatment. Previous studies clearly showed that patients with longer duration of ICU stay receive more invasive procedures, for longer period of time [16,17].

Potential explanations for the high percentage of patients with prolonged antifungal treatment in our ICU include the difficult diagnosis of invasive fungal disease in ICU patients [18], and the absence of recommendations on optimal duration of treatment and de-escalation in this population [5]. Prolonged use of antifungals is associated with high hospital cost [19], and increased risk for fungal resistance [7]. Further studies should determine the impact of clinical, and biological markers use on duration of empirical antifungal treatment, and patient outcomes. For example, the use of PCR [20,21], galactomannan [22], and biomarkers for invasive fungal disease, such as mannan, anti-mannan [9,23,24], and β -D-glucan [25-29], could be helpful for reducing duration of empirical antifungal treatment. In our ICU, galactomannan, and biomarkers for invasive fungal disease are available, and used by physicians. However, no clear recommendation is available on how to use these markers

to tailor antifungal treatment initiation or duration in critically ill patients.

Our study has some limitations, including the retrospective observational design, and the single center design. Therefore, other large prospective multicenter studies are needed to confirm our results. Further, no information was collected on corticosteroid treatment during ICU stay. In fact, corticosteroids treatment in the ICU might reflect refractory septic shock. No significant difference was found in percentage of patients with septic shock at ICU admission between patients with prolonged empirical antifungal use and those with no prolonged empirical treatment. However, no information was collected on septic shock occurring during ICU stay. In addition, as no information was available on appropriateness of antibiotic treatment in patients with infection, we could not adjust for for this factor in mortality analysis. Finally, as explained above, the prolonged duration of mechanical ventilation and ICU stay in patients who had no prolonged duration of antifungal treatment is probably due to the definition we used for this condition. However, the possibility of beneficial effects of antifungal treatment on duration of mechanical ventilation and ICU stay could not be ruled out. Further randomized controlled studies are needed to determine the impact of duration of empirical antifungal treatment on outcome of critically ill patients.

Conclusion

Empirical antifungal treatment was used in a large proportion of study patients. Chemotherapy, and suspicion of infection at ICU admission were independently associated with prolonged empirical antifungal treatment. No significant impact of prolonged empirical antifungal treatment was found on ICU mortality.

Competing interests

The authors declare that they have no competing interests.

Authors' contributions

EP, BS, and SN designed the study. MZ, AK, OB, FW, AB, FW, and DE collected the data. MZ, EP, and SN drafted the manuscript. All authors read and approved the final manuscript.

Author details

¹Pôle de Réanimation Médicale, CHRU de Lille, Hôpital Salengro, Lille, France.

²Laboratoire de Mycologie et de Parasitologie, CHRU de Lille, Lille, France.

³Université Lille Nord de France, Lille, France.

Received: 12 November 2013 Accepted: 23 February 2014

Published: 11 March 2014

References

1. Vincent J-L, Rello J, Marshall J, Silva E, Anzueto A, Martin CD, Moreno R, Lipman J, Gomersall C, Sakr Y, Reinhart K: **International study of the prevalence and outcomes of infection in intensive care units.** *JAMA* 2009, **302**:2323–9.
2. Ostrosky-Zeichner L: **Invasive mycoses: diagnostic challenges.** *Am J Med* 2012, **125**:S14–24.
3. Eggmann P, Bille J, Marchetti O: **Diagnosis of invasive candidiasis in the ICU.** *Ann Intensive Care* 2011, **1**:37.
4. Cornely OA, Bassetti M, Calandra T, Garbino J, Kullberg BJ, Lortholary O, Meersseman W, Akova M, Arendrup MC, Arikan-Akdagli S, Bille J, Castagnola E, Cuenca-Estrella M, Donnelly JP, Groll AH, Herbrecht R, Hope WW, Jensen HE, Lass-Flörl C, Petrikos G, Richardson MD, Roilides E, Verweij PE, Viscoli C, Ullmann AJ: **ESCMID* guideline for the diagnosis and management of Candida diseases 2012: non-neutropenic adult patients.** *Clin Microbiol Infect* 2012, **18**(Suppl 7):19–37.
5. Ostrosky-Zeichner L, Kullberg BJ, Bow EJ, Hadley S, León C, Nucci M, Patterson TF, Perfect JR: **Early treatment of candidemia in adults: a review.** *Med Mycol* 2011, **49**:113–20.
6. Azoulay E, Dupont H, Tabah A, Lortholary O, Stahl J-P, Francois A, Martin C, Guidet B, Timsit J-F: **Systemic antifungal therapy in critically ill patients without invasive fungal infection.** *Crit Care Med* 2012, **40**:813–22.
7. Fournier P, Schwebel C, Maubon D, Vesin A, Lebeau B, Foroni L, Hamidfar-Roy R, Cornet M, Timsit J-F: **Pelloux, H Antifungal use influences Candida species distribution and susceptibility in the intensive care unit.** *J Antimicrob Chemoth* 2011, **66**:2880–6.
8. Schuster MG, Edwards JE, Sobel JD, Darouiche RO, Karchmer AW, Hadley S, Slotman G, Panzer H, Biswas P, Rex JH: **Empirical fluconazole versus placebo for intensive care unit patients: a randomized trial.** *Ann Intern Med* 2008, **149**:83–90.
9. Olaechea-Astigarraga PM, Alvarez-Lerma F, Palomar-Martinez M, Insausti-Ordeñana J, López-Pueyo MJ, Seijas-Betolaza I, Otal-Entraigas JJ, Gimeno-Costa R, Gracia-Arnillas MP: **Trends in systemic antifungal use in critically ill patients. Multicenter observational study, 2006–2010.** *Enfermedades infecciosas Microbiología Clínica* 2012, **30**:435–40.
10. Yang S-P, Chen Y-Y, Hsu H-S, Wang F-D, Chen L, Fung C-P: **A risk factor analysis of healthcare-associated fungal infections in an intensive care unit: a retrospective cohort study.** *BMC Infect Dis* 2013, **13**:10.
11. Pratikaki M, Platsouka E, Sotiropoulou C, Douka E, Paramythiotou E, Kaltsas P, Kotanidou A, Paniara O, Roussos C, Routsis C: **Epidemiology, risk factors for and outcome of candidaemia among non-neutropenic patients in a Greek intensive care unit.** *Mycoses* 2011, **54**:154–61.
12. Vardakas KZ, Michalopoulos A, Kiriakidou KG, Siampili EP, Samonis G, Falagas ME: **Candidaemia: incidence, risk factors, characteristics and outcomes in immunocompetent critically ill patients.** *Clin Microbiol Infect* 2009, **15**:289–92.
13. León C, Alvarez-Lerma F, Ruiz-Santana S, León MA, Nolla J, Jordá R, Saavedra P, Palomar M: **Fungal colonization and/or infection in non-neutropenic critically ill patients: results of the EPCAN observational study.** *Eur J Clin Microbiol Infect Dis* 2009, **28**:233–42.
14. Drees M, Snyderman DR, Schmid CH, Barefoot L, Hansjosten K, Vue PM, Cronin M, Nasraway SA, Golan Y: **Golan, Y Prior environmental contamination increases the risk of acquisition of vancomycin-resistant enterococci.** *Clin Infect Dis* 2008, **46**:678–85.
15. Nseir S, Zerimech F, Fournier C, Lubret R, Ramon P, Durocher A, Balduyck M: **Continuous control of tracheal cuff pressure and microaspiration of gastric contents in critically ill patients.** *Am J Respir Crit Care Med* 2011, **184**:1041–7.
16. Van der Kooij TII, de Boer AS, Manniën J, Wille JC, Beaumont MT, Mooi BW, van den Hof S: **Incidence and risk factors of device-associated infections and associated mortality at the intensive care in the Dutch surveillance system.** *Intensive Care Med* 2007, **33**:271–8.
17. Nseir S, Hoel J, Grailles G, Soury-Lavergne A, Di Pompeo C, Mathieu D, Durocher A: **Remifentanyl discontinuation and subsequent intensive care unit-acquired infection: a cohort study.** *Crit Care* 2009, **13**:R60.
18. Monneret G, Venet F, Kullberg B-J, Netea MG: **ICU-acquired immunosuppression and the risk for secondary fungal infections.** *Med Mycol* 2011, **49**(Suppl 1):S17–23.
19. Dodds Ashley E, Drew R, Johnson M, Danna R, Dabrowski D, Walker V, Prasad M, Alexander B, Papadopoulos G, Perfect J: **Cost of invasive fungal infections in the era of new diagnostics and expanded treatment options.** *Pharmacotherapy* 2012, **32**:890–901.
20. Lass-Flörl C, Mutschlechner W, Aigner M, Grif K, Marth C, Girschikofsky M, Grandt W, Greil R, Russ G, Cerkl P, Eller M, Kropshofer G, Eschertzhuber S, Kathrein H, Schmid S, Beer R, Lorenz I, Theurl I, Nachbauer D: **Utility of PCR in diagnosis of invasive fungal infections: real-life data from a multicenter study.** *J Clin Microbiol* 2013, **51**:863–8.
21. Nguyen MH, Wissel MC, Shields RK, Salomoni MA, Hao B, Press EG, Shields RM, Cheng S, Mitsani D, Vadnerkar A, Silveira FP, Kleiboeker SB, Clancy CJ:

- Performance of *Candida* real-time polymerase chain reaction, β -D-glucan assay, and blood cultures in the diagnosis of invasive candidiasis. *Clin Infect Dis* 2012, **54**:1240–8.
22. Morrissey CO, Chen SC-A, Sorrell TC, Milliken S, Bardy PG, Bradstock KF, Szer J, Halliday CL, Gilroy NM, Moore J, Schwarer AP, Guy S, Bajel A, Tramontana AR, Spelman T, Slavin MA: **Galactomannan and PCR versus culture and histology for directing use of antifungal treatment for invasive aspergillosis in high-risk haematology patients: a randomised controlled trial.** *Lancet Infect Dis* 2013, **13**:519–28.
 23. Mikulska M, Calandra T, Sanguinetti M, Poulain D, Viscoli C: **The use of mannan antigen and anti-mannan antibodies in the diagnosis of invasive candidiasis: recommendations from the Third European Conference on Infections in Leukemia.** *Crit Care* 2010, **14**:R222.
 24. Sendid B, Dotan N, Nseir S, Savaux C, Vandewalle P, Standaert A, Zerimech F, Guery BP, Dukler A, Colombel JF, Poulain D: **Antibodies against glucan, chitin, and *Saccharomyces cerevisiae* mannan as new biomarkers of *Candida albicans* infection that complement tests based on *C. albicans* mannan.** *Clin Vaccine Immunol* 2008, **15**:1868–77.
 25. León C, Ruiz-Santana S, Saavedra P, Castro C, Ubeda A, Loza A, Martín-Mazuelos E, Blanco A, Jerez V, Ballús J, Alvarez-Rocha L, Utande-Vázquez A, Fariñas O: **Value of β -D-glucan and *Candida albicans* germ tube antibody for discriminating between *Candida* colonization and invasive candidiasis in patients with severe abdominal conditions.** *Intensive Care Med* 2012, **38**:1315–25.
 26. Fontana C, Gaziano R, Favaro M, Casalino I, Pistoia E, Di Francesco P: **(1–3)- β -D-Glucan vs Galactomannan Antigen in Diagnosing Invasive Fungal Infections (IFIs).** *Open Microbiol J* 2012, **6**:70–3.
 27. Hanson KE, Pfeiffer CD, Lease ED, Balch AH, Zaas AK, Perfect JR, Alexander BD: **β -D-glucan surveillance with preemptive anidulafungin for invasive candidiasis in intensive care unit patients: a randomized pilot study.** *PLoS One* 2012, **7**:e42282.
 28. Tissot F, Lamoth F, Hauser PM, Orasch C, Flückiger U, Siegemund M, Zimmerli S, Calandra T, Bille J, Eggimann P, Marchetti O: **Beta-Glucan Antigenemia Anticipates Diagnosis of Blood Culture-Negative Intra-Abdominal Candidiasis.** *Am J Respir Crit Care Med* 2013, doi:10.1164/rccm.201211-2069OC.
 29. Posteraro B, De Pascale G, Tumbarello M, Torelli R, Pennisi MA, Bello G, Maviglia R, Fadda G, Sanguinetti M, Antonelli M: **Early diagnosis of candidemia in intensive care unit patients with sepsis: a prospective comparison of (1 \rightarrow 3)- β -D-glucan assay, *Candida* score, and colonization index.** *Crit Care* 2011, **15**:R249.

doi:10.1186/1476-0711-13-11

Cite this article as: Zein et al.: Factors predicting prolonged empirical antifungal treatment in critically ill patients. *Annals of Clinical Microbiology and Antimicrobials* 2014 **13**:11.

Submit your next manuscript to BioMed Central and take full advantage of:

- Convenient online submission
- Thorough peer review
- No space constraints or color figure charges
- Immediate publication on acceptance
- Inclusion in PubMed, CAS, Scopus and Google Scholar
- Research which is freely available for redistribution

Submit your manuscript at
www.biomedcentral.com/submit

