



Published in final edited form as:

*Stem Cell Res.* 2019 December ; 41: 101643. doi:10.1016/j.scr.2019.101643.

## Generation of a knock-in MAP2-tdTomato reporter human embryonic stem cell line with inducible expression of *NEUROG2/1* (NYGCe001-A)

Congyi Lu<sup>a,b</sup>, Neville E. Sanjana<sup>a,b,\*</sup>

<sup>a</sup>New York Genome Center, New York, NY, USA

<sup>b</sup>Department of Biology, New York University, New York, NY, USA

### Abstract

Overexpression of *NEUROG2* and *NEUROG1* (*NEUROG2/1*) in human embryonic stem cells (hESCs) rapidly produces functional networks of excitatory and inhibitory neurons. To facilitate the use of this efficient inducible human neuron model in neuroscience research, we generated hESCs with doxycycline-inducible *NEUROG2/1* via lentivirus and a tdTomato fluorescent reporter knock-in at the *MAP2* locus using the CRISPR nuclease Cas9. Upon doxycycline-driven induction of *NEUROG2/1*, these hESCs differentiate within days into cells that are uniformly MAP2 immunoreactive and tdTomato fluorescent.

### 1. Resource utility

MAP2 is a widely-used marker for mature neurons. This HUES66 hESC line with doxycycline-inducible *NEUROG2* and *NEUROG1* and a MAP2-tdTomato knock-in expresses a red fluorescent protein upon neuronal differentiation. This cell line can help identify critical factors in neuronal differentiation or to study how newly-formed neurons integrate into neural networks *in vivo*.

### 2. Resource details

We generated a HUES66 human embryonic stem cell (hESC) line with inducible expression of *NEUROG2/1* via lentiviral transgenesis and a knock-in MAP2-T2A-tdTomato fluorescent reporter via CRISPR-mediated homologous recombination (HR). As previously described (Busskamp et al., 2014; Lu et al., 2019), doxycycline-inducible expression of *NEUROG2/1* was achieved via lentiviral delivery of transgenes for the reverse tetracycline transactivator 3 (rtTA3) linked to the blasticidin resistance gene and tet-inducible expression of the master neuronal transcription factors *NEUROG2* and *NEUROG1* linked to the puromycin resistance gene.

This is an open access article under the CC BY-NC-ND license (<http://creativecommons.org/licenses/by-nc-nd/4.0/>).

\*Corresponding author at: New York Genome Center, 101 Avenue of the Americas, New York, NY 10013, USA. nsanjana@nygenome.org (N.E. Sanjana).

Supplementary materials

Supplementary material associated with this article can be found, in the online version, at doi:10.1016/j.scr.2019.101643.

To create the neuron reporter line, we targeted the beginning of the 3' untranslated region (UTR) of the *MAP2* gene by designing a Cas9 single-guide RNA that cuts 31 bp after the MAP2 stop codon (Fig. 1A). We combined the Cas9 plasmid with a donor vector containing ~850 bp homology arms (HA) flanking the *MAP2* stop codon (Fig. 1B). The donor vector contains a self-cleaving 2A peptide and tdTomato fluorescent protein that are in frame with the end of MAP2. The donor also contains a zeocin selection cassette flanked by FRT sites to enable selection after successful integration and a small mutation in the right HA at the Cas9 protospacer-adjacent motif (PAM) to prevent Cas9 from cutting either the donor vector or the genome after HR. After integration of the donor, transient expression of *Flp* recombinase removes the zeocin selection cassette (Fig. 1C).

We transfected HUES66 with inducible expression of *NEUROG2/1*, a plasmid containing Cas9 nuclease and the sgRNA and a plasmid with the donor template (Fig. 1D). Two days after transfection, zeocin was used to select for cells that underwent successful HR at the *MAP2* locus. Zeocin selection was maintained for 5 days to select for cells with stable integration. Using dilution plating, we established monoclonal lines and validated successful HR by PCR amplification with a primer outside the HA and a primer that only binds the *tdTomato* transgene. After initial validation, we excised the bleomycin resistance cassette by transient transfection of *Flp* recombinase. We performed a second dilution plating and verified excision using PCR. In total, the HUES66 cells were passaged 14 times over the course of the derivation of the monoclonal reporter line.

The selected monoclonal line (NYGCe001-A) contains the desired in-frame knock-in fragment and a designed GG to TT mutation at the PAM sequence (to prevent re-cutting by Cas9) (Tables 1 and 2). On the other allele, there is a small deletion in a noncoding region near the cut site (3' UTR) (Fig. 1E). Using low-pass, whole-genome sequencing (WGS) of parental and knock-in lines, we confirmed that NYGCe001-A had no copy number changes at 5 Mb resolution. To evaluate the pluripotency and differentiation ability of the selected line, we performed immunocytochemical staining of the pluripotency marker OCT3/4 and the neuron marker MAP2 (Fig. 1F). Prior to differentiation, all NYGCe001-A cells examined were positive for OCT3/4 and negative for MAP2 by immunofluorescence and, using flow cytometry, we found that 99.3% cells were positive for the pluripotency cell surface marker TRA-1-81 by flow cytometry (Supplemental Fig. 1A). Also, using chemical growth factors, we confirmed that NYGCe001-A hESCs could differentiate into all three germ layers via immunofluorescent staining for layer-specific marker genes (Supplemental Fig. 1B).

After 5 days of doxycycline-induced (*NEUROG2/1*-driven) neural differentiation, all cells examined stained negative for OCT3/4 and positive for MAP2 by immunofluorescence. Similarly, the endogenous tdTomato fluorescence signal for the selected line was negative prior to doxycycline induction, but, after doxycycline treatment, tdTomato expression was initially visible at day 5 and intensified at day 10 (Fig. 1G). Flow cytometry at day 7 post-doxycycline induction indicated that 99.2% of cells were tdTomato positive (Fig. 1H).

### 3. Materials and methods

#### 3.1. Cell culture

HUES66 human embryonic stem cells (hESCs) were maintained according to the Enhanced Culture Platform, which is less prone to spontaneous differentiation and aids in culturing hESCs as single cells for selection after genome engineering (Lu et al., 2019; Peters et al., 2013; Schinzel et al., 2011). Briefly, hESCs were maintained in Essential 8 media (ThermoFisher) supplemented with 100 µg/mL Normocin (InvivoGen) and cultured in standard tissue culture dishes coated with Geltrex (ThermoFisher) at 37 °C in 5% CO<sub>2</sub>. For passaging, the cells were dissociated using Accutase (STEMCELL). When subculturing or growing at very low density, we added 10 µM Rho kinase inhibitor Y-27632 (MilliporeSigma) to the culture medium to increase survival.

#### 3.2. Lentiviral transduction

Lentiviral delivery was used to introduce constitutive expression of reverse tetracycline transactivator (rtTA3) driven by the human elongation factor-1a promoter (hEF1a) and inducible expression of *NEUROG2/1* driven by a tetracycline response element promoter into hESCs. Lentivirus was produced as previously described (Sanjana et al., 2014). The two viral constructs were packaged separately and then pooled at the time of transduction.

#### 3.3. Transfection

We cloned a single guide RNA (sgRNA) targeting the 3' end of the *MAP2* gene into lentiCRISPRv2 (Addgene 52961), a plasmid that contains both Cas9 and a sgRNA cassette, as previously described (Sanjana et al., 2014). We transfected hESCs using Lipofectamine 3000 (ThermoFisher) with this CRISPR construct and a plasmid donor template T2A-tdTomato-FRT-SV40 promoter-Zeo-SV40pA-FRT flanked by 837 bp left and 876 bp right homology arms. We plated 0.4 million cells per well into a 12-well dish 6 h before transfection. A total of 2 µg plasmid was transfected into the plated cells with 2 µl of Lipofectamine 3000. Culture media was fully refreshed 12 h after transfection. After successful homology-directed integration of the donor, we removed the zeocin selection cassette using recombinase plasmid pCAG-Flpe (Addgene 13787).

#### 3.4. In vitro differentiation assay

NYGce001-A cells were differentiated to ectoderm, mesoderm, and endoderm using the media supplements and growth factors in the Human Pluripotent Stem Cell Functional Identification Kit (R&D Systems SC027B). To validate lineage commitment, differentiated cells were stained with anti-Otx2 (ectoderm), anti-Brachyury (mesoderm), and anti-SOX17 (endoderm).

#### 3.5. Immunocytochemistry

Cells were grown on Geltrex-coated coverslips and fixed with 4% paraformaldehyde and 4% sucrose in PBS at room temperature for 5 min followed by washing 3 times with PBS. The fixed cells were then permeabilized with 0.1% Triton X-100 in PBS for 5 min, washed 3 times with PBS, and incubated in 3% bovine serum albumin in PBS for 1 h to block

nonspecific binding. The cells were incubated overnight with the primary antibodies at 4 °C overnight followed by incubation with the secondary antibodies at room temperature for 1 h. The images were collected using an Axio Observer Z1 microscope (Zeiss).

### 3.6. Flow cytometry

The cells were dissociated into a single cell suspension using Accutase and passed through a 35 µm cell strainer (BD Falcon). Flow cytometry data was acquired on a Sony SH800 and analyzed using FlowJo v10.5 (BD).

### 3.7. Karyotype analysis

Karyotyping was done using the digital karyotyping service from FIND Genomics. Briefly, DNA was extracted using the GeneJET DNA Purification Kit (ThermoFisher), followed by nanopore library preparation using the Rapid Barcoding Kit (Oxford Nanopore). The gDNA library was sequenced using a MinION nanopore sequencer (Oxford Nanopore). The collected DNA data was analysed using the FIND Cell software (FIND Genomics) and analyzed to confirm cell population identity and digital karyotype with a structural variant detection resolution of 5Mb or greater. Digital karyotyping was done on 3 separate genomic DNA samples.

### 3.8. Mycoplasma detection

We verified the absence of mycoplasma in the culture medium using a luminescence-based assay, MycoAlert PLUS (Lonza).

### 3.9. Short tandem repeat analysis

STR analysis was performed by ATCC using a PowerPlex 18D kit (Promega) and the Prism 3500xl Genetic Analyzer (Applied Biosystems). STR profiles were analyzed using GeneMapper ID-X v1.2 (Applied Biosystems).

## Supplementary Material

Refer to Web version on PubMed Central for supplementary material.

## Acknowledgments

We thank the entire Sanjana laboratory for support and advice. We also thank G. Garipler and E. Mazzoni for the homology donor vector and D. Peters and C. Cowan for guidance with stem cell culture. N.E.S. is supported by NYU and NYGC startup funds, NIH/NHGRI (R00HG008171, DP2HG010099), NIH/NCI (R01CA218668), DARPA (D18AP00053), the Sidney Kimmel Foundation, and the Brain and Behavior Foundation.

## References

- Busskamp V, Lewis NE, Guye P, Ng AHM, Shipman SL, Byrne SM, Sanjana NE, Murn J, Li Y, Li S, et al. , 2014. Rapid neurogenesis through transcriptional activation in human stem cells. *Mol. Syst. Biol* 10, 760. [PubMed: 25403753]
- Lu C, Shi X, Allen A, Baez-Nieto D, Nikish A, Sanjana NE, Pan JQ, 2019. Overexpression of NEUROG2 and NEUROG1 in human embryonic stem cells produces a network of excitatory and inhibitory neurons. *FASEB J.* 33, 5287–5299. [PubMed: 30698461]

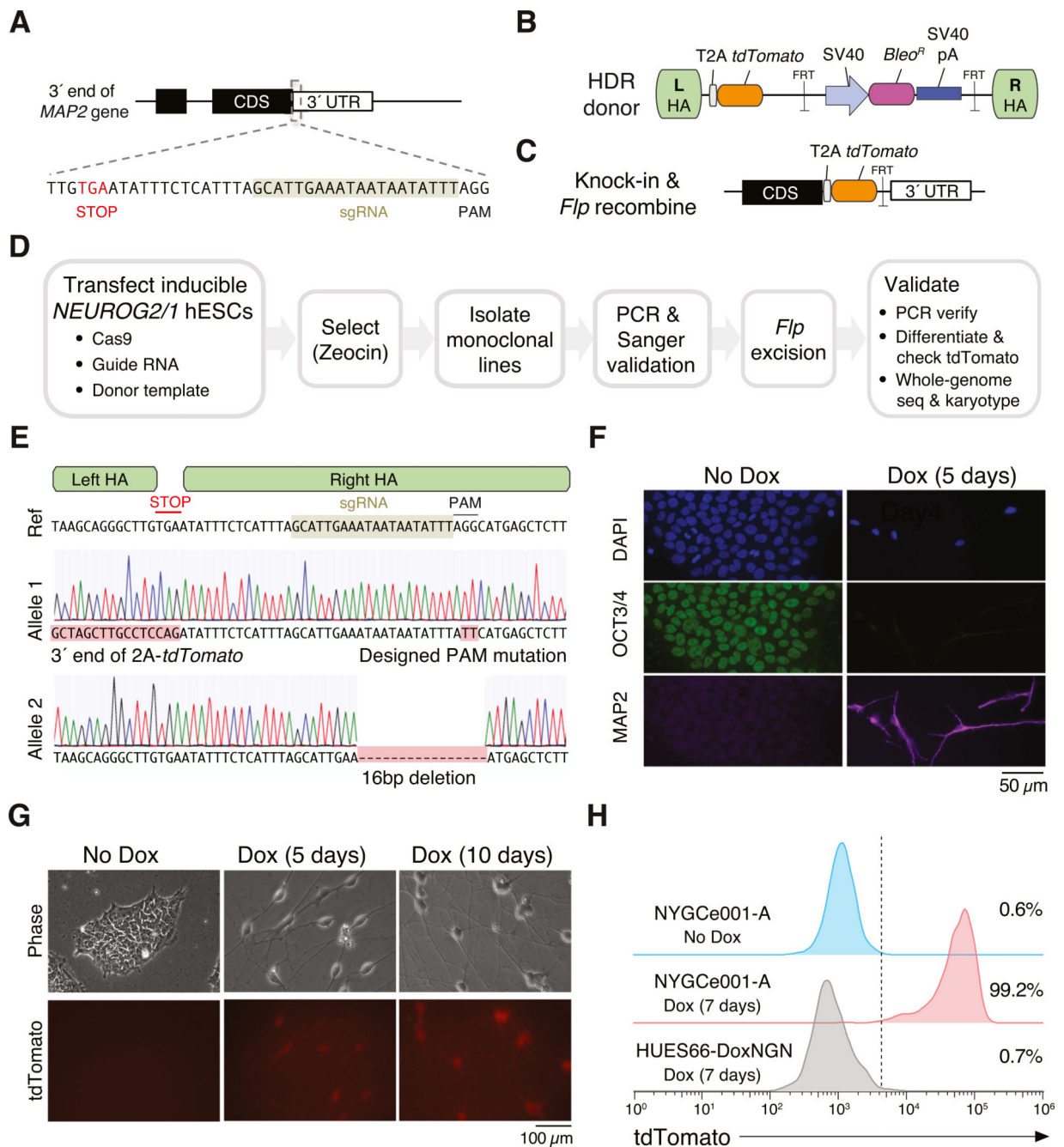
- Peters DT, Cowan CA, Musunuru K, 2013. Genome editing in human pluripotent stem cells. Stembook. Harvard Stem Cell Institute, CambridgeMA.
- Sanjana NE, Shalem O, Zhang F, 2014. Improved vectors and genome-wide libraries for CRISPR screening. Nat. Methods 11, 783–784. [PubMed: 25075903]
- Schinzl RT, Ahfeldt T, Lau FH, Lee Y-K, Cowley A, Shen T, Peters D, Lum DH, Cowan CA, 2011. Efficient culturing and genetic manipulation of human pluripotent stem cells. PLoS One 6, e27495. [PubMed: 22194785]

Author Manuscript

Author Manuscript

Author Manuscript

Author Manuscript



**Fig. 1.** Generation and characterization of the MAP2 knock-in reporter cell line NYGCe001-A. (A) Schematic of 3' region of the MAP2 coding sequence with stop codon and Cas9 target site. (B) Schematic of donor plasmid. (C) Schematic of MAP2 locus after homology-directed repair and Flp recombination. (D) Workflow to generate a monoclonal MAP2 reporter cell line. (E) Sanger sequencing of individual MAP2 alleles in NYGCe001-A near the Cas9 target site. (F) Immunocytochemistry for OCT4 and DAPI before and after Dox-induced expression of *NEUROG2* and *NEUROG1*. (G) Endogenous *tdTomato* fluorescence before and after Dox induction. (H) Flow cytometry of endogenous *tdTomato* before and after Dox

induction in NYGce001-A and after Dox induction in the parental line (without the MAP2 reporter knock-in).

Author Manuscript

Author Manuscript

Author Manuscript

Author Manuscript

## Resource table:

Unique stem cell line identifier	NYGCe001-A
Alternative name(s) of stem cell line	HUES66-DoxNGN-MAP2-tdTomato
Institution	New York Genome Center
Contact information of distributor	Neville Sanjana (neville@sanjanalab.org)
Type of cell line	hESC
Origin	Human
Additional origin info	Sex: Female
Cell Source	Harvard Stem Cell Institute
Clonality	Monoclonal
Method of reprogramming	N/A
Genetic Modification	Yes
Type of Modification	Lentiviral transgenic for Dox-inducible <i>Neurogenin2/1</i> and CRISPR-Cas9 knock-in of tdTomato at MAP2 locus
Associated disease	N/A
Gene/locus	Chr2/MAP2
Method of modification	Lentiviral transgenic; CRISPR-Cas9 homology-mediated repair following by Flp recombinase
Name of transgene or resistance	Transgenes: <i>NEUROG2</i> , <i>NEUROG1</i> , <i>rtTA3</i> , tdTomato; Resistance markers: blasticidin, puromycin
Inducible/constitutive system	TET-ON (rtTA3) for <i>NEUROG2-2A-NEUROG1-2A-PuroR</i>
Date archived/stock date	N/A
Cell line repository/bank	N/A
Ethical approval	New York Genome Center IBC (ISCRO003-Y2-M0); HUES66 line from Harvard Stem Cell Institute

Author Manuscript

Author Manuscript

Author Manuscript

Author Manuscript



Table 1

Characterization and validation.

Classification	Test	Result	Data
Morphology	Photography	Normal	Fig. 1G
Phenotype	Immunocytochemistry	100% of cells were stained positive for OCT3/4 before Dox induction. 100% of cells were stained positive for MAP2 at day 5 after Dox induction.	Fig. 1F
	Fluorescent photography	All cells showed tdTomato signal at day 10 after Dox induction.	Fig. 1G
	Flow cytometry	99.2% of NYGc001-A cells were tdTomato positive at day 7 after Dox induction.	Fig. 1H
Genotype Identity	Flow cytometry	99.3% of NYGc001-A cells were stained positive for TRA-1-81.	Supplemental Fig. 1A
	Digital karyotype	46XX : 2.5 – 10 MB resolution	Supplemental Fig. 2
	Microsatellite PCR (mPCR)	Not performed	
Identity	STR analysis	18 sites tested	Submitted in archive with journal
Mutation analysis			
	Sequencing	Precise insertion in chr2 at desired location; small deletion on the other allele.	Fig. 1E
Mutation analysis	WGS	N/A	
Microbiology and virology	Mycoplasma	Mycoplasma testing by luminescence: Negative.	Supplemental Fig. 3
Differentiation potential	NEUROG2/1-overexpression to differentiate neurons	Expression of neuron marker MAP2.	Fig. 1F
	<i>In vitro</i> differentiation assay	Cells from ectoderm differentiation were stained positive for Otx2; cells from mesoderm differentiation were stained positive for Brachyury; cells from endoderm differentiation were stained positive for SOX17.	Supplemental Fig. 1B

Table 2

Reagents details.

Antibodies used for immunocytochemistry/flow-citometry			
	Antibody	Dilution	Company Cat # and RRID
Pluripotency Marker	Mouse anti-OCT3/4	1:500	Santa Cruz Biotech Cat# sc-5279, RRID: AB_628051
	Mouse anti-TRA-1-81 (Podocalyxin), PE	1:20	ThermoFisher Cat# 12-8883-80 RRID: AB_891608
Differentiation Marker	Guinea pig anti-MAP2	1:1000	Synaptic Systems Cat # 188 004, RRID: AB_2138181
	Goat anti-SOX17	1:500	R&D Systems Cat# AF1924, RRID: AB_355060
	Goat anti-Otx2	1:500	R&D Systems Cat# AF1979, RRID: AB_2157172
Secondary antibodies	Goat anti-Brachyury	1:500	R&D Systems Cat# BAF2085 RRID: AB_2303014
	Donkey anti-guinea pig Alexa 647	1:1000	Jackson ImmunoResearch Cat# 706-605-148, RRID: AB_2340476
	Goat anti-mouse Alexa 488	1:1000	ThermoFisher Scientific Cat# A32723, RRID: AB_2633275
	Donkey anti-goat Northern Lights 557	1:200	R&D Systems Cat# NL001, RRID: AB_663766
Primers			
	<b>Target</b>	<b>Forward/Reverse primer (5' -3')</b>	
Targeted mutation analysis/sequencing	MAP2 exon 15, tdTomato knock-in	aggtccagatttagacctgg/ cgtccatgccgtacaggaa	
Targeted mutation analysis/sequencing	tdTomato knock-in, MAP2 3' UTR	tccggaatcgtttccgggac/ gccttcaggacatgaaaggt	