

# Impact of DNA ligase IV on nonhomologous end joining pathways during class switch recombination in human cells

Qiang Pan-Hammarström,<sup>1</sup> Anne-Marie Jones,<sup>2</sup> Aleksi Lähdesmäki,<sup>1</sup> Wei Zhou,<sup>1</sup> Richard A. Gatti,<sup>3</sup> Lennart Hammarström,<sup>1</sup> Andrew R. Gennery,<sup>4</sup> and Michael R. Ehrenstein<sup>2</sup>

<sup>1</sup>Clinical Immunology, Department of Laboratory Medicine, Karolinska University Hospital Huddinge, SE-14186 Stockholm, Sweden

<sup>2</sup>Department of Medicine, University College London, London W1T 4NJ, England, UK

<sup>3</sup>Department of Pathology, University of California Los Angeles School of Medicine, CA 90095

<sup>4</sup>Department of Pediatric Immunology, Newcastle General Hospital, Newcastle NE4 6BE, England, UK

**Class switch recombination (CSR) is a region-specific, transcriptionally regulated, nonhomologous recombinational process that is initiated by activation-induced cytidine deaminase (AID). The initial lesions in the switch (S) regions are subsequently processed and resolved, leading to recombination of the two targeted S regions. The mechanisms by which repair and ligation of the broken DNA ends occurs is still elusive. Recently, a small number of patients lacking DNA ligase IV, a critical component of the nonhomologous end joining (NHEJ) machinery, have been identified. We show that these patients display a considerably increased donor/acceptor homology at S<sub>μ</sub>-S<sub>α</sub> junctions compared with healthy controls. In contrast, S<sub>μ</sub>-S<sub>γ</sub> junctions show an increased frequency of insertions but no increase in junctional homology. These altered patterns of junctional resolution may be related to differences in the homology between the S<sub>μ</sub> and the downstream isotype S regions, and could reflect different modes of switch junction resolution when NHEJ is impaired. These findings link DNA ligase IV, and thus NHEJ, to CSR.**

## CORRESPONDENCE

Michael Ehrenstein:  
m.ehrenstein@ucl.ac.uk  
or

Qiang Pan-Hammarström:  
Qiang.Pan-Hammarstrom@  
labmed.ki.se

DNA double-strand breaks (DSBs) represent a serious threat to cell survival and can arise in a number of ways, such as ionizing radiation, or as intermediates in normal endogenous processes including replication, meiosis, and V(D)J recombination. In response to these DNA breaks, cells have developed an impressive arsenal of DNA repair pathways. There are two general types of repair: homologous recombination (HR) and nonhomologous end joining (NHEJ). The former includes gene conversion, break-induced replication, and single-strand annealing and is predominant in *Saccharomyces cerevisiae* and in the G2 phase of the vertebrate cell cycle. The latter is the principle mechanism used in vertebrate cells (1).

Class switch recombination (CSR) is a programmed gene rearrangement that allows a B lymphocyte to alter the class of antibody secreted, thus changing its biological properties. It is initiated by activation-induced cytidine deaminase (AID; reference 2) and resolution of

the DSBs and is thought to rely on the NHEJ pathway. Based on murine gene targeting studies, three components of the NHEJ machinery have been implicated in CSR: DNA-PKcs, Ku70, and Ku80 (for review see reference 3). However, the impact of the other two components, DNA ligase IV and XRCC4, which are critical to NHEJ, have not been analyzed to date, as disruption of *LIG4* or *XRCC4* in mice results in embryonic lethality (4, 5).

A homozygous mutation in *LIG4* was first described in a developmentally normal leukemia patient (6). Recently, a few additional patients with defective DNA ligase IV activity have been reported with a syndrome consisting of microcephaly, growth retardation, immunodeficiency, and photosensitivity (7). Studies on cell lines derived from these patients have shown aberrant, but detectable, levels of V(D)J recombination (7). These patients provide a unique opportunity to study the DSB repair pathways in CSR in the absence of (or with a markedly reduced level of) DNA ligase IV. Using our previously developed PCR-based

The online version of this article contains supplemental material.

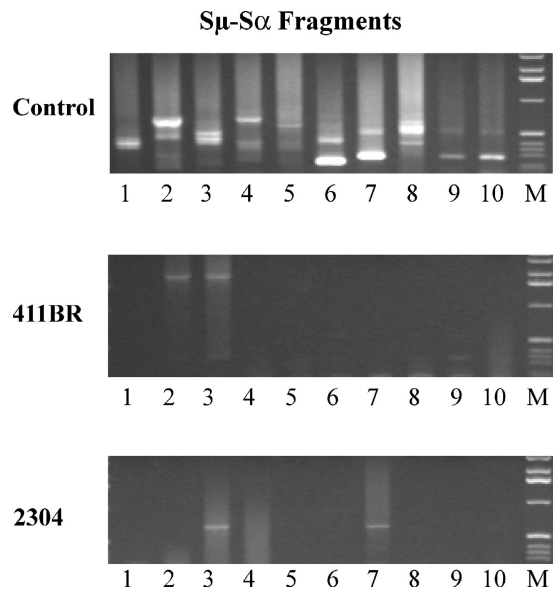
assay (8), we report that the nature of switch recombination junctions is altered, showing either a marked shift to utilization of microhomologies ( $\geq 4$  bp) ( $\mu$ - $\alpha$ ), or an increased frequency of insertions ( $\mu$ - $\gamma$ ). This implies that DNA ligase IV is directly involved in CSR, and when it is defective, alternative pathways may be required to repair DSBs.

## RESULTS AND DISCUSSION

### Switching to IgA and IgG in Lig4D patients

Genomic DNA was purified from peripheral blood samples from healthy blood donors and the two Lig4D patients (411BR and 2304). To determine whether switch recombination was affected by a lack of functional DNA ligase IV, individual switch junctions were amplified using a previously described PCR protocol (8–10). The numbers of  $S\mu$ - $S\alpha$  fragments were determined from 10 PCR reactions run in parallel using DNA from each individual and can be used as an estimation of the number of clones that have switched to IgA. As shown in Fig. 1, when 30 ng of template DNA was added in each PCR reaction, only two weak bands were generated from each of the Lig4D patients (Fig. 1, 411BR, lanes 2 and 3, and 2304, lanes 3 and 7), whereas at least 14 distinct  $S\mu$ - $S\alpha$  fragments were amplified from the control. The experiments were repeated independently several times and the intensity of the smear and the numbers of bands obtained from the patients (ranging from 0 to 2) were consistently less compared with those of the controls.

To estimate the degree of reduction in the number of switched clones in the patients, we subsequently performed the same PCRs on a series of dilutions of the DNA templates from normal individuals ( $n = 5$ ) and patients. The average number of  $S\mu$ - $S\alpha$  fragments generated from controls correlated with the amount of DNA template ( $r = 0.84$ ,  $P < 0.05$ ) and 30 ng of DNA input from the patient was equivalent to 0.37–0.74 ng (41–81-fold less) of the control samples (Fig. S1 B, available at <http://www.jem.org/cgi/content/full/jem.20040772/DC1>). No switch fragment could be amplified from the two patients when DNA input was  $< 30$  ng (Fig. S1 B). Taking into account that one patient had lymphopenia (an approximately threefold reduction) and that the proportion of B cells was low in the remaining lymphocytes (411BR: 2.6% of PBLs are B cells, normal controls showing 5–17%), the number of clones that have switched to IgA appears to be reduced by  $\sim 2$ –14-fold in this patient. To further estimate the relative proportion of B cells in the peripheral blood, we amplified the VH-JH rearrangements from the DNA samples used in the CSR assay. 411BR had a reduced level of rearranged VH genes ( $\sim 4$ –8-fold less), which is comparable to the estimation from the lymphocyte count (6–20-fold less), whereas 2304 had close to the normal level of rearranged VH genes. Additional experiments performed using mixtures of cells with a known proportion of B cells from normal controls ( $n = 2$ ) showed that one to two switch fragments could still be amplified when “normal” B cells constituted as few as 0.15–0.45% of PBL (5–17-fold fewer B cells than present in 411BR). Thus, the reduced number of switch fragments we observed in the patients is not only due to fewer B cells



**Figure 1. PCR amplification of  $S\mu$ - $S\alpha$  fragments in Lig4D patients and controls.** The numbers of  $S\mu$ - $S\alpha$  switch fragments were determined from 10 PCR reactions run in parallel (lanes 1–10) using DNA from each individual. M, molecular weight marker.

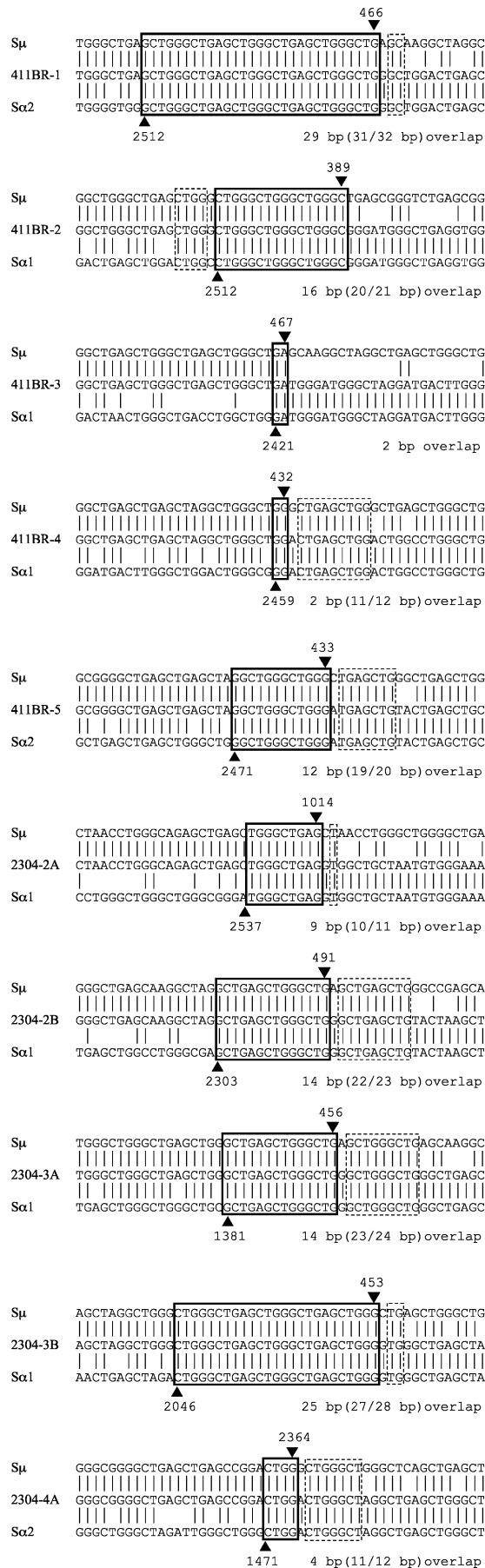
but also appears to reflect a reduced number of cells that had switched to IgA.

Patient 411BR had a reduced serum IgG2 and very low levels of anti-*Pneumococcal* antibody titres before and after vaccination (6 and 14 IU/ml, respectively; normal range, 20–200), which would support the notion of a reduced efficiency of switching in this patient. Indeed, we could not amplify any  $S\mu$ - $S\gamma 2$  fragment from this patient using a  $S\gamma 2$ -specific primer, whereas in controls ( $n = 3$ ), an average of 16 fragments could be amplified under the same conditions. Similarly, only one  $S\mu$ - $S\gamma 2$  fragment was amplified from the second patient. The numbers of  $S\mu$ - $S\gamma 1$  and  $S\mu$ - $S\gamma 3$  fragments were also lower in both patients than those from controls (Fig. S1 C and not depicted), suggesting a parallel reduction in the number of clones that have switched to IgG in these patients.

### $S\mu$ - $S\alpha$ junctions exhibit long microhomology in Lig4D patients

The amplified  $S\mu$ - $S\alpha$  fragment sequences were aligned to the germline  $S\mu$  and  $S\alpha$  sequences to define the switch junctions. Altogether, 30  $S\mu$ - $S\alpha$  junctions from the Lig4D patients were characterized (Fig. S2, available at <http://www.jem.org/cgi/content/full/jem.20040772/DC1>). Five sequences from each patient are shown in Fig. 2. Switching to  $\alpha 1$  occurred more often than to  $\alpha 2$  both in patients and controls (60 and 66%, respectively). No sequential switching through  $S\gamma$  was observed (7% in controls), further supporting the notion that there may be a reduction in the efficiency of CSR in these patients, as sequential switching would involve more than one recombination event.

Next, we analyzed the actual usage of microhomology at the switch junctions. There was a strikingly high degree of overlap between the  $S\mu$  and  $S\alpha$  sequences in switch junctions derived from the Lig4D patients ( $9.8 \pm 7.5$  vs.  $1.8 \pm 3.2$  nucleotides in controls; Student's  $t$  test,  $P < 0.00001$ ). Almost



all junctions (29 out of 30; 97%) displayed microhomology of  $\geq 1$  bp (i.e., at least one nucleotide is shared by both the S $\mu$  and S $\alpha$  regions; Table I). Moreover, 60% of the junctions exhibited a long microhomology of  $\geq 7$  bp (Table I). This was in sharp contrast with S $\mu$ -S $\alpha$  junctions derived from normal donors (Table I), where approximately half (42%) showed no sequence homology at all and only a minority of the junctions showed a microhomology of  $\geq 7$  bp (10%). When one mismatch was allowed at either side of the switch junction,  $>80\%$  of the switch junctions from the patients were flanked by  $\geq 10/11$  bp of imperfect repeats (Table I). The shift in using long microhomologies or imperfect repeats in the S $\mu$ -S $\alpha$  junctions from Lig4D patients was even more pronounced than previously observed in patients with other disorders involving DNA repair (ataxia-telangiectasia [A-T]), Nijmegen breakage syndrome (NBS) and ataxia-telangiectasia-like disorder (ATLD; references 10, 11).

Significantly more S $\mu$  breakpoints from the patients (73 vs. 31% in controls) were located in the part of the amplified S $\mu$  region that shows the highest degree of homology with S $\alpha$ 1 or S $\alpha$ 2 (position 275-760;  $\chi^2$  test,  $P < 0.001$ ; Fig. S3, available at <http://www.jem.org/cgi/content/full/jem.20040772/DC1>). Similar shifts have been described previously in A-T, NBS, and ATLD patients and PMS2 knockout mice, where increased junctional microhomology is also observed (11, 12). Subsequently, we compared all the junctions with breakpoints within bp 275-760 of the S $\mu$  region from Lig4D patients and controls (22 and 47 junctions, respectively); the junctions from Lig4D patients still exhibited a significantly higher degree of microhomology in all the categories ( $P < 0.01$  or  $P < 0.001$ ). This suggests that clustering of breakpoints in the part of the S $\mu$  where homology to S $\alpha$  is most pronounced is due to the need for donor/acceptor homology in resolving the DSBs associated with IgA switching.

Another feature of the S $\mu$ -S $\alpha$  junctions from the Lig4D patients was a reduction in the number of mutations or insertions at, or around, the breakpoints. We have demonstrated previously that mutations or insertions frequently occur close to CSR junctions ( $\pm 15$  bp; references 11, 13). However, this was rarely seen in the S $\mu$ -S $\alpha$  junctions from Lig4D patients, where only 3 out of 30 fragments (10%) showed mutations or insertions in this region (compared with 56% in controls;  $\chi^2$  test,  $P < 0.001$ ).

Point mutations in the germline S $\mu$  region, which are probably generated by an AID-dependent process (14, 15),

**Figure 2. Sequences of S $\mu$ -S $\alpha$  junctions.** The S $\mu$  and S $\alpha$ 1 or S $\alpha$ 2 sequences are aligned above and below the recombined switch junctional sequences. Microhomology was determined by identifying the longest region at the switch junction of perfect uninterrupted donor/acceptor identity (boxed with solid lines). Imperfect repeat was determined by identifying the longest overlap region at the switch junction by allowing one mismatch on either side of the breakpoint (the extra nucleotide identity beyond the perfect-matched sequence identity is boxed by dotted lines). The S $\mu$  and S $\alpha$  breakpoints for each switch fragment are indicated by ▼ and ▲, respectively, and their positions in the germline sequences are indicated on the top or below the arrowheads. The number of base pairs involved in microhomology and imperfect repeat (numbers indicated in parentheses) for each junction is shown at the bottom right of each switch junction.

**Table I.** Characterization of S $\mu$ -S $\alpha$  and S $\mu$ -S $\gamma$  junctions<sup>a</sup>

	Perfectly matched homology				Imperfect repeats (with one mismatch)				1-bp insertion	Total no. of S junctions
	$\geq 1$ bp	$\geq 4$ bp	$\geq 7$ bp	$\geq 10$ bp	$\geq 4/5$ bp	$\geq 7/8$ bp	$\geq 10/11$ bp	$\geq 15/16$ bp		
S $\mu$ -S $\alpha$ junctions										
Controls	90 (58%)	31 (20%)	16 (10%)	5 (3%)	63 (41%)	34 (22%)	17 (11%)	3 (2%)	39 (25%)	154
Lig4D	<b>29 (97%)</b>	<b>22 (73%)</b>	<b>18 (60%)</b>	<b>14 (47%)</b>	<b>25 (83%)</b>	<b>24 (80%)</b>	<b>24 (80%)</b>	<b>16 (53%)</b>	<b>1 (3%)</b>	30
S $\mu$ -S $\gamma$ junctions										
Controls	40 (68%)	3 (5%)	0 (0%)	0 (0%)	10 (17%)	2 (3%)	0 (0%)	0 (0%)	6 (10%)	59
Lig4D	19 (56%)	4 (12%)	0 (0%)	0 (0%)	12 (35%)	3 (9%)	0 (0%)	0 (0%)	<b>11 (32%)</b>	34

<sup>a</sup>Statistical analysis was performed using  $\chi^2$  test, comparing the number of junctions from the Lig4D patients with the corresponding category of junctions from normal controls. For S $\mu$ -S $\alpha$  junctions, in all categories, significant differences ( $P < 0.001$ ) between patients (bold numbers) and controls were observed. For S $\mu$ -S $\gamma$  junctions, a significant difference ( $P < 0.05$ ) between patients and controls was observed only in the category with 1-bp insertion (bold). Parts of the data from controls have been described previously (references 9–11). The S $\mu$ -S $\alpha$  and S $\mu$ -S $\gamma$  junctions were derived from 17 and 33 normal controls, respectively.

can also be observed in the recombined S $\mu$  region, away from (starting 15-bp upstream) the switch junctions (16). The pattern of these mutations is similar to those in the V regions (thus referred to as SHM like). However, they are clearly different from those at, or close to, the switch junctions and occurred at a much lower frequency, suggesting the involvement of a different repair mechanism (11, 16). In Lig4D patients, SHM-like mutations were observed at a much lower frequency (1.8/1,000 bp) as compared with those from controls (6.4/1,000 bp,  $\chi^2$  test,  $P < 0.001$ ). Furthermore, the general pattern of base substitutions was altered, occurring mainly at A-T sites (56 vs. 37% in controls) and showing a preference for transitions (78 vs. 59% in controls).

The RGYW/WRCY (R = A or G, Y = C or T, W = A or T) motifs serve as hotspots for the SHM-like mutations in the recombined S $\mu$  region (16, 17) in normal controls. In Lig4D patients, a similar rate of targeting was observed (72 vs. 70% in controls). Most of the mutations in these motifs are due to transitions (92 vs. 60% in controls;  $\chi^2$  test,  $P < 0.05$ ) and the last nucleotide of the motif was more often mutated in the patients than in controls (38 vs. 5%,  $\chi^2$  test,  $P < 0.001$ ). Although a diminished rate of CSR or proliferative response may explain the reduction of SHM-like mutations, this cannot explain the bias for targeting within the RGYW/WRCY motifs and the altered pattern of mutations. Thus, like ATM (16), DNA ligase IV is also, directly or indirectly, involved in the generation of SHM-like mutations in the S $\mu$  region.

We further analyzed a few S $\mu$ -S $\alpha$  junctions ( $n = 8$ ) generated from experiments with a low amount of template DNA or a reduced proportion of B cells from normal controls. The nature of these junctions was similar to those amplified under standard conditions (30 ng of DNA from peripheral blood cells). Therefore, the aberrant switch junctions derived from patients are not likely to be due to any bias arising from PCR amplification when specific target sequences are rare.

#### S $\mu$ -S $\gamma$ switch junctions show an increased proportion of 1-bp insertions in Lig4D patients

A high proportion of S $\mu$ -S $\gamma$  junctions ( $n = 59$ ) from normal blood donors display a microhomology of  $\geq 1$  bp; a frequency similar to, or even higher, than at S $\mu$ -S $\alpha$  junctions (68 vs.

58%; Table I). However, fewer S $\mu$ -S $\gamma$  junctions showed a microhomology of  $\geq 4$  bp (5 vs. 20%) or  $\geq 7$  bp (0 vs. 10%) as compared with the corresponding S $\mu$ -S $\alpha$  junctions (Table I). This is probably due to the low degree of homology between S $\mu$  and S $\gamma$  and the likelihood of obtaining a 4-, 7-, 10-, or 15-bp microhomology between the S $\mu$ -S $\alpha$  regions is 1.5, 8.1, 270, and  $>1,000$ -fold higher than the S $\mu$ -S $\gamma$  regions.

Mutations or insertions are frequently associated with the S $\mu$ -S $\gamma$  junctions ( $\pm 15$  bp) in controls (47%). However, the pattern of nucleotide changes seems to be slightly different from those associated with the S $\mu$ -S $\alpha$  junctions, with more mutations occurring at G/C sites (91 vs. 83%) and, although transitions are preferred (54 vs. 45% in S $\mu$ -S $\alpha$  junctions), G $\rightarrow$ T nucleotide changes occur more often at the S $\mu$ -S $\gamma$  junctions (27 vs. 9%;  $\chi^2$  test,  $P < 0.01$ ). Together, these data suggest that S $\mu$ -S $\gamma$  junctions may be resolved differently from S $\mu$ -S $\alpha$  in normal controls.

Subsequently, we cloned and sequenced 36 S $\mu$ -S $\gamma$  fragments from the Lig4D patients. 34 of these fragments were unique in their junctional sequences and the majority of the junctions were due to switching to IgG1 ( $n = 18$ ) or IgG3 ( $n = 13$ ). There was a trend toward an increased usage of microhomologies ( $\geq 4$  bp) or imperfect repeats ( $\geq 4/5$  or  $\geq 7/8$  bp) in the Lig4D patients, but not to a statistically significant degree (Table I).

Mutations occurred at a normal frequency around the S $\mu$ -S $\gamma$  junctions in cells from the Lig4D patients (15 out of 34 fragments; 44 vs. 41% in controls) and no statistically significant alteration in the mutation pattern was observed. However, S $\mu$ -S $\gamma$  junctions from patients exhibited insertions (1 bp) at the breakpoints (Table I) more frequently than those from controls ( $\chi^2$  test,  $P < 0.05$ ).

#### End joining pathways in CSR in Lig4D patients

A number of alternative NHEJ pathways have been proposed in yeast and vertebrates (18). In the former, a Mre11/Rad50/Rad1-dependent pathway characterized by microhomology-mediated end joining, which is only partially dependent on the yeast DNA ligase IV homologue, Dnl4, has been described previously (19). In vertebrates, substantial evidence exists for an alternative end-joining mechanism that is



independent of the “classical” NHEJ proteins. Thus, end joining during V(D)J recombination or in various plasmid assays is inefficient in Ku, DNA ligase IV, or XRCC4-deficient systems, and the recovered junctions occur principally at short direct repeats with several (usually  $\geq 4$  or  $\geq 6$ ) base-pairs of microhomology flanking the DSB (20–23).

The data presented here demonstrate that the resolution of CSR junctions is significantly altered when DNA ligase IV function is impaired. Although the  $S\mu$ – $S\alpha$  junctions show considerable donor/acceptor microhomology, far more than that seen in healthy individuals, the  $S\mu$ – $S\gamma$  junctions show only a trend toward an increase in homology compared with controls. The predominantly used, error-prone, end joining pathway in CSR appears to be impaired in Lig4D patients, and the  $S\mu$ – $S\alpha$  regions are joined by an alternative, error-free end joining mechanism, involving microhomology. This alternative mechanism may also be used in recombination of  $S\mu$ – $S\gamma$  regions in the patients, although to a much lower degree. It is possible that yet another alternative pathway is used for joining of the  $S\mu$ – $S\gamma$  regions in Lig4D patients, where 1-bp insertions are frequently introduced. It is worth noting that even in normal controls, the  $S\mu$ – $S\alpha$  and  $S\mu$ – $S\gamma$  regions are resolved differently, with varying degrees of dependence on microhomology and different patterns of junctional mutations, which suggests that multiple pathways (dominant and alternative) are involved in resolving the initial lesions in the S regions. The balance in utilization between these putative different pathways might depend not only on the factors available but also on the degree of homology between the S regions. It remains unclear if the alternative mechanisms proposed are totally independent of DNA ligase IV, as some residual level of functional protein might still be present because our patients carry hypomorphic mutations.

A further characteristic of the  $S\mu$ – $S\alpha$  junctions in Lig4D patients is the lack of junctional mutations. This feature has previously been observed in  $S\mu$ – $S\alpha$  junctions from A-T patients (ATM defective; reference 10), but not those derived from NBS and ATLD patients (NBS1 and Mre11 defective, respectively; reference 11), or  $S\mu$ – $S\gamma$  junctions from PMS2 deficient mice (12). Therefore, the end joining mechanism, used in  $S\mu$ – $S\alpha$  recombination when ligase IV or ATM is defective, is partially different from the alternative NHEJ pathways demonstrated in yeast, where mutations and insertions are observed along with an increased usage of microhomology (19). DNA ligase IV is probably not only necessary in the final ligation step in CSR, but also, as suggested previously by *in vitro* studies, required for alignment-based gap filling (24). This process involves noncomplementary ends, is error-prone or imprecise, and could well be accompanied by recruitment of an error-prone polymerase such as pol  $\eta$ , which has previously been implicated in the generation of mutations in the switch region (25).

In conclusion, the involvement of DNA ligase IV in CSR is clearly demonstrated by the altered pattern of *in vivo* recombination at the switch junctions. Three components of

NHEJ (DNA-PKcs, Ku70, and Ku 80) have previously been implicated in CSR. However, as both Ku and DNA PKcs display additional NHEJ-independent functions (3), it is uncertain whether the CSR defects observed in Ku and DNA-PKcs knockout mice are due to an impairment of the NHEJ pathway. Because DNA ligase IV and XRCC4 have no reported roles outside NHEJ, our study links DNA ligase IV and, therefore NHEJ, to CSR.

## MATERIALS AND METHODS

**Patients.** Two out of the four DNA ligase IV-defective (Lig4D) patients characterized previously (7) were included in this study. Patient 411BR carries three homozygous alterations in *LIG4* and the second patient (2304), from an independent family with two affected siblings, is a compound heterozygote for two truncating mutations (7). Patient 411BR was reported to have pancytopenia (7), at the time of sampling having  $0.37 \times 10^9$  cells/ml of lymphocytes with a lowered proportion (2.6%) of B cells. Pretreatment Ig level determination showed that IgG2 was below the normal range; the patient is currently being treated with regular immunoglobulin infusions. Patient 2304 had chronic respiratory infections and “bone marrow failure” although the lineages affected were not clearly stated at the time. Previous records on Ig levels or lymphocyte counts were not available from this patient. The institution review boards at the Karolinska Institute approved the study.

**Amplification of switch (S) $\mu$ – $S\alpha$  and  $S\mu$ – $S\gamma$  fragments.** Genomic DNA was purified from peripheral blood cells from patients and healthy blood donors. The amplification of  $S\mu$ – $S\alpha$  fragments was performed as described previously (8, 10). In brief, two pairs of  $S\mu$  and  $S\alpha$ -specific primers were used in a nested PCR assay (Fig. S1 A). The number of  $S\mu$ – $S\alpha$  fragments was determined from 10 reactions run in parallel using DNA (30 ng per reaction) from each individual and represents random amplification of *in vivo*-switched clones. The PCR error rate was estimated previously (0.9/1,000 nucleotides; reference 8).

CD19-positive B cells were isolated from peripheral blood mononuclear cells from normal individuals using Dynabeads M-450 CD19 (Dyna). Genomic DNA was extracted from the positively isolated B cells and the negatively isolated non-B cell populations from the same individual. The VH-FR3-JH rearrangements were PCR amplified as described previously (26).

The  $S\mu$ – $S\gamma$ 3 fragments were amplified as described previously (9) and two new primers,  $S\gamma$ 1 specific (5'-ACGTGCAGCCCTCAGCTGTC-TGTT-3') and  $S\gamma$ 2 specific (5'-GTCTGCAGTGTGGCTGCTCTG-CTCTGAT-3') were applied to allow detection of switching to IgG1 and IgG2, respectively.

**Analysis of the  $S\mu$ – $S\alpha$  and  $S\mu$ – $S\gamma$  junctions.** The PCR-amplified  $S\mu$ – $S\alpha$  and  $S\mu$ – $S\gamma$  fragments were purified, cloned, and sequenced as described previously (8). The breakpoints were determined by aligning the switch fragment sequences with the  $S\mu$  (X54713)/ $S\alpha$ 1 (L19121)/ $S\alpha$ 2 (AF030305) or  $S\mu$ / $S\gamma$ 1 (U39737)/ $S\gamma$ 2 (U39934)/ $S\gamma$ 3 (U39935)/ $S\gamma$ 4 (Y12547-52; reference 27) sequences. Microhomology was defined as successive nucleotides that were shared by both the  $S\mu$  and  $S\alpha$  or  $S\gamma$  regions at the switch junction (without mismatches). The term imperfect repeat was used when one mismatch was allowed adjacent to the breakpoint. Insertion was defined as a nucleotide at the breakpoints that was not identical to either of the switch regions. Mutation close to, or at, the junction was defined as a nucleotide change within 15 bp on either side of the switch junction. Polymorphisms in the switch regions were excluded from the mutation analysis.

**Online supplemental material.** Fig. S1 describes the PCR strategy for amplification of  $S\mu$ – $S\alpha$  and  $S\mu$ – $S\gamma$  fragments and estimation of the input of DNA templates. The sequences for all the  $S\mu$ – $S\alpha$  junctions are presented in Fig. S2. Distribution of the  $S\mu$ – $S\alpha$  breakpoints is given in Fig. S3. Online supplemental material is available at <http://www.jem.org/cgi/content/full/jem.20040772/DC1>.

This work was supported by the Swedish Research Council, the Swedish Society for Medical Research (SSMF), STINT, and the Leukaemia Research Fund, UK.  
The authors have no conflicting financial interests.

Submitted: 19 April 2004

Accepted: 7 December 2004

## REFERENCES

- Lieber, M.R., Y. Ma, U. Pannicke, and K. Schwarz. 2003. Mechanism and regulation of human non-homologous DNA end-joining. *Nat. Rev. Mol. Cell Biol.* 4:712–720.
- Muramatsu, M., K. Kinoshita, S. Fagarasan, S. Yamada, Y. Shinkai, and T. Honjo. 2000. Class switch recombination and hypermutation require activation-induced cytidine deaminase (AID), a potential RNA editing enzyme. *Cell.* 102:553–563.
- Chaudhuri, J., and F.W. Alt. 2004. Class-switch recombination: interplay of transcription, DNA deamination and DNA repair. *Nat. Rev. Immunol.* 4:541–552.
- Gao, Y., Y. Sun, K.M. Frank, P. Dikkes, Y. Fujiwara, K.J. Seidl, J.M. Sekiguchi, G.A. Rathbun, W. Swat, J. Wang, et al. 1998. A critical role for DNA end-joining proteins in both lymphogenesis and neurogenesis. *Cell.* 95:891–902.
- Barnes, D.E., G. Stamp, I. Rosewell, A. Denzel, and T. Lindahl. 1998. Targeted disruption of the gene encoding DNA ligase IV leads to lethality in embryonic mice. *Curr. Biol.* 8:1395–1398.
- Riballo, E., S.E. Critchlow, S.H. Teo, A.J. Doherty, A. Priestley, B. Broughton, B. Kysela, H. Beamish, N. Plowman, C.F. Arlett, et al. 1999. Identification of a defect in DNA ligase IV in a radiosensitive leukaemia patient. *Curr. Biol.* 9:699–702.
- O'Driscoll, M., K.M. Cerosaletti, P.M. Girard, Y. Dai, M. Stumm, B. Kysela, B. Hirsch, A. Gennery, S.E. Palmer, J. Seidel, et al. 2001. DNA ligase IV mutations identified in patients exhibiting developmental delay and immunodeficiency. *Mol. Cell.* 8:1175–1185.
- Pan, Q., C. Petit-Frere, S. Dai, P. Huang, H.C. Morton, P. Brandtzaeg, and L. Hammarström. 2001. Regulation of switching and production of IgA in human B cells in donors with duplicated alpha1 genes. *Eur. J. Immunol.* 31:3622–3630.
- Pan, Q., H. Rabbani, F.C. Mills, E. Severinson, and L. Hammarström. 1997. Allotype-associated variation in the human  $\gamma 3$  switch region as a basis for differences in IgG3 production. *J. Immunol.* 158:5849–5859.
- Pan, Q., C. Petit-Frere, A. Lähdesmäki, H. Gregorek, K.H. Chrzanowska, and L. Hammarström. 2002. Alternative end joining during switch recombination in patients with ataxia-telangiectasia. *Eur. J. Immunol.* 32:1300–1308.
- Lähdesmäki, A., A.M. Taylor, K.H. Chrzanowska, and Q. Pan-Hammarström. 2004. Delineation of the role of the Mre11 complex in class switch recombination. *J. Biol. Chem.* 279:16479–16487.
- Ehrenstein, M.R., C. Rada, A.M. Jones, C. Milstein, and M.S. Neuberger. 2001. Switch junction sequences in PMS2-deficient mice reveal a microhomology-mediated mechanism of Ig class switch recombination. *Proc. Natl. Acad. Sci. USA.* 98:14553–14558.
- Pan, Q., and L. Hammarström. 1999. Targeting of human switch recombination breakpoints: implications for the mechanism of  $\mu$ - $\gamma$  isotype switching. *Eur. J. Immunol.* 29:2779–2787.
- Petersen, S., R. Casellas, B. Reina-San-Martin, H.T. Chen, M.J. Difi-lippantonio, P.C. Wilson, L. Hanitsch, A. Celeste, M. Muramatsu, D.R. Pilch, et al. 2001. AID is required to initiate Nbs1/gamma-H2AX focus formation and mutations at sites of class switching. *Nature.* 414:660–665.
- Nagaoka, H., M. Muramatsu, N. Yamamura, K. Kinoshita, and T. Honjo. 2002. Activation-induced deaminase (AID)-directed hypermutation in the immunoglobulin S $\mu$  region: implication of AID involvement in a common step of class switch recombination and somatic hypermutation. *J. Exp. Med.* 195:529–534.
- Pan-Hammarström, Q., S. Dai, Y. Zhao, I.F. van Dijk-Härd, R.A. Gatti, A.L. Borresen-Dale, and L. Hammarström. 2003. ATM is not required in somatic hypermutation of VH, but is involved in the introduction of mutations in the switch  $\mu$  region. *J. Immunol.* 170:3707–3716.
- Schrader, C.E., S.P. Bradley, J. Vardo, S.N. Mochegova, E. Flanagan, and J. Stavnezer. 2003. Mutations occur in the Ig S $\mu$  region but rarely in S $\gamma$  regions prior to class switch recombination. *EMBO J.* 22:5893–5903.
- Haber, J.E. 2000. Lucky breaks: analysis of recombination in Saccharomyces. *Mutat. Res.* 451:53–69.
- Ma, J.L., E.M. Kim, J.E. Haber, and S.E. Lee. 2003. Yeast Mre11 and Rad1 proteins define a Ku-independent mechanism to repair double-strand breaks lacking overlapping end sequences. *Mol. Cell. Biol.* 23:8820–8828.
- Bogue, M.A., C. Wang, C. Zhu, and D.B. Roth. 1997. V(D)J recombination in Ku86-deficient mice: distinct effects on coding, signal, and hybrid joint formation. *Immunity.* 7:37–47.
- Verkaik, N.S., R.E. Esveldt-van Lange, D. van Heemst, H.T. Bruggenwirth, J.H. Hoeijmakers, M.Z. Zdzienicka, and D.C. van Gent. 2002. Different types of V(D)J recombination and end-joining defects in DNA double-strand break repair mutant mammalian cells. *Eur. J. Immunol.* 32:701–709.
- van Heemst, D., L. Bruggmans, N.S. Verkaik, and D.C. van Gent. 2004. End-joining of blunt DNA double-strand breaks in mammalian fibroblasts is precise and requires DNA-PK and XRCC4. *DNA Repair (Amst.)* 3:43–50.
- Smith, J., E. Riballo, B. Kysela, C. Baldeyron, K. Manolis, C. Masson, M.R. Lieber, D. Papadopoulo, and P. Jeggo. 2003. Impact of DNA ligase IV on the fidelity of end joining in human cells. *Nucleic Acids Res.* 31:2157–2167.
- Lee, J.W., S.M. Yannone, D.J. Chen, and L.F. Povirk. 2003. Requirement for XRCC4 and DNA ligase IV in alignment-based gap filling for nonhomologous DNA end joining in vitro. *Cancer Res.* 63:22–24.
- Faili, A., S. Aoufouchi, S. Weller, F. Vuillier, A. Sary, A. Sarasin, C.A. Reynaud, and J.C. Weill. 2004. DNA polymerase  $\eta$  is involved in hypermutation occurring during immunoglobulin class switch recombination. *J. Exp. Med.* 199:265–270.
- van Dongen, J.J., A.W. Langerak, M. Bruggemann, P.A. Evans, M. Hummel, F.L. Lavender, E. Delabesse, F. Davi, E. Schuurink, R. Garcia-Sanz, et al. 2003. Design and standardization of PCR primers and protocols for detection of clonal immunoglobulin and T-cell receptor gene recombinations in suspect lymphoproliferations: report of the BIOMED-2 Concerted Action BMH4-CT98-3936. *Leukemia.* 17:2257–2317.
- Pan, Q., H. Rabbani, and L. Hammarström. 1998. Characterization of human  $\gamma 4$  switch region polymorphisms suggests a meiotic recombination hot spot within the Ig locus: influence of S region length on IgG4 production. *J. Immunol.* 161:3520–3526.