

## Video Article

**Agroinfiltration and PVX Agroinfection in Potato and *Nicotiana benthamiana***Juan Du<sup>1,2</sup>, Hendrik Rietman<sup>1</sup>, Vivianne G. A. A. Vleeshouwers<sup>1</sup><sup>1</sup>Wageningen UR Plant Breeding, Wageningen University<sup>2</sup>Key Laboratory of Horticultural Plant Biology, Huazhong Agricultural University, Ministry of Education, National Centre for Vegetable Improvement (Central China), Potato Engineering and Technology Research Centre of Hubei Province, Huazhong Agricultural UniversityCorrespondence to: Vivianne G. A. A. Vleeshouwers at [vivianne.vleeshouwers@wur.nl](mailto:vivianne.vleeshouwers@wur.nl)URL: <http://www.jove.com/video/50971>DOI: [doi:10.3791/50971](https://doi.org/10.3791/50971)Keywords: Plant Biology, Issue 83, Genetics, Bioengineering, Plants, Genetically Modified, DNA, Plant Immunity, Plant Diseases, Genes, Genome, Plant Pathology, Effectoromics, Agroinfiltration, PVX agroinfection, potato, *Nicotiana benthamiana*, high-throughput, functional genomics

Date Published: 1/3/2014

Citation: Du, J., Rietman, H., Vleeshouwers, V.G.A.A. Agroinfiltration and PVX Agroinfection in Potato and *Nicotiana benthamiana*. *J. Vis. Exp.* (83), e50971, doi:10.3791/50971 (2014).**Abstract**

Agroinfiltration and PVX agroinfection are two efficient transient expression assays for functional analysis of candidate genes in plants. The most commonly used agent for agroinfiltration is *Agrobacterium tumefaciens*, a pathogen of many dicot plant species. This implies that agroinfiltration can be applied to many plant species. Here, we present our protocols and expected results when applying these methods to the potato (*Solanum tuberosum*), its related wild tuber-bearing *Solanum* species (*Solanum* section *Petota*) and the model plant *Nicotiana benthamiana*. In addition to functional analysis of single genes, such as resistance (*R*) or avirulence (*Avr*) genes, the agroinfiltration assay is very suitable for recapitulating the R-AVR interactions associated with specific host pathogen interactions by simply delivering *R* and *Avr* transgenes into the same cell. However, some plant genotypes can raise nonspecific defense responses to *Agrobacterium*, as we observed for example for several potato genotypes. Compared to agroinfiltration, detection of AVR activity with PVX agroinfection is more sensitive, more high-throughput in functional screens and less sensitive to nonspecific defense responses to *Agrobacterium*. However, nonspecific defense to PVX can occur and there is a risk to miss responses due to virus-induced extreme resistance. Despite such limitations, in our experience, agroinfiltration and PVX agroinfection are both suitable and complementary assays that can be used simultaneously to confirm each other's results.

**Video Link**The video component of this article can be found at <http://www.jove.com/video/50971/>**Introduction**

Effectoromics, a high-throughput functional genomics approach has recently emerged as a powerful tool to identify resistance (*R*) genes in crop plants and matching avirulence (*Avr*) genes of pathogens<sup>1-4</sup>. In contrast to the more time-consuming stable transformation with *R* genes, the effectoromics strategy is based on transient assays of pathogen gene sequences.

Since the genomics era, genomes of plant pathogens have widely been explored. For example for oomycetes, which include the most devastating plant pathogens, large collections of sequences have been generated and analyzed for genes that play a role during the interaction with the plant<sup>5-10</sup>. One class of pathogen proteins represents effectors, which manipulate host cell structure and function either to facilitate infection (virulence factors) or to trigger defense responses (avirulence factors)<sup>11-13</sup>. Expression of *Avr* genes in plant cells containing *R* genes usually results in the hypersensitive cell death response (HR)<sup>14,15</sup>. *In planta* expression of *R* and *Avr* genes can be accomplished using transient expression systems such as *Agrobacterium tumefaciens*-based transient transformation (agroinfiltration)<sup>16</sup>. This transient transformation can also be applied in combination with viral expression systems (agroinfection)<sup>17,18</sup>.

For agroinfiltration, the most commonly used agent is *A. tumefaciens*, a broad host range pathogen of dicot plants. *A. tumefaciens* contains a tumor-inducing (Ti) plasmid. Transfer DNA (T-DNA) from a Ti plasmid will translocate into the plant cells after the virulence machinery of the bacterium is activated. This can be triggered in wounded plant cells, by the released low-molecular-weight phenolic compounds and monosaccharides in a slightly acidic environment<sup>19</sup>. The virulence gene is activated after the infiltration of *Agrobacterium* suspensions into leaf panels defined by major veins. Then plant cells in the leaf panels will be transformed and express the transgene(s) contained in the T-DNA region.

Agroinfection is based on wound-inoculated *Agrobacterium*, which mediates translocation of a virus to plant cells. The virus then further spreads to adjacent plant tissues, in the absence of *Agrobacterium*. For agroinfection, several plant viruses can be used. RNA viruses are ideal vectors for gene expression because they can multiply to very high levels in infected plants. Among plant RNA viruses, *Potato Virus X* (PVX) is widely used for effectoromics screens. To facilitate functional tests for an inserted gene, binary vectors that contain the PVX genome flanked by the Cauliflower mosaic virus 35S promoter and the nopaline synthase terminator, were cloned into the T-DNA of *A. tumefaciens*<sup>20</sup>. After the T-DNA is transferred into plant cells, the PVX genome contained in the T-DNA is transcribed from the 35S promoter. Then virus particles spread

systemically in the infected plants, resulting in the expression of the inserted gene. This method based on both *Agrobacterium* and PVX is called PVX agroinfection.

Here we show examples for both the agroinfiltration and PVX agroinfection assays. As host plants we use potato germplasm (*Solanum* section *Petota*), for which effectoromics approaches have been pioneered and proven successful<sup>3,4</sup>. We also use *Nicotiana benthamiana*, which is renowned as a model plant in *Solanaceous* plants<sup>14,21,22</sup>.

## Protocol

### 1. Plant Growing and Testing Conditions

1. Grow and maintain plants in controlled greenhouses or climate chambers within the temperature range of 18-22 °C and under natural light regime or with a 16 hr/8 hr day/night regime. Remove axillary branches in order to make the plants more manageable.
2. For potato, maintain *in vitro* plantlets in sterile plastic jars containing *Murashige-Skoog* (MS) medium (20 g/L sucrose, 5 g/L MS salts with vitamins, 8 g/L agar, pH 5.8) under controlled conditions in climate chambers at 18 °C with a 16 hr/8 hr day/night regime for two weeks and then transfer them into pots of sterilized soil in regulated greenhouse compartments.

### 2. Agroinfiltration

1. Plant material:  
For *Nicotiana benthamiana*, use around 4-5 week old seed-grown plants. For potato, use around 4-5 week old transplants from *in vitro*. Choose young, healthy and fully developed leaves for infiltrations.
2. *Agrobacterium* culture:
  1. Prepare the YEB medium in advance (**Table 1**). Fill the 50 ml tubes with 10 ml YEB medium supplemented with 1 µl acetosyringone (200 mM), 100 µl MES buffer (2-(N-morpholino)-ethane sulfonic acid, 1 M) and the appropriate antibiotics. Pipette 20 µl glycerol stock of the desired strains (**Table 2**) (containing the gene of interest) into the YEB. Initiate cultures for all the *Agrobacterium* strains in this assay at the same time. Incubate cells by shaking for 1-2 days at 28 °C and 200 rpm to an OD<sub>600</sub> of approximately 1.0.
  2. Harvest cells by centrifugation at 3,000 x g for 10 min. Pour off the supernatant and resuspend the pellet in freshly made MMA medium (**Table 3**) to an OD<sub>600</sub> of 0.3. Gently vortex cells to resuspend them. For coinfiltration of two bacterial strains, mix the culture in a 1:1 ratio.
  3. Leave the culture on the bench at room temperature for 1-6 hr before infiltrations. In the meantime, label the plants to be infiltrated and the date of the experiment.
3. Infiltrations:  
Use a 1 ml needleless syringe to infiltrate the *Agrobacterium* suspensions. Carefully and slowly inject leaf panels with the suspensions from the syringe (for health and safety reasons eye protection should be worn during this process). Infiltrate at least three plants for each strain. Use three leaves per plant to serve as triplicates.  
Note: Normally, 1 ml of *Agrobacterium* suspension could be enough for 3 plants of *N. benthamiana*. For potato, more suspension is needed because the leaves of *Solanum* species are more difficult to infiltrate. Required volumes of suspensions depend on the *Solanum* species. Avoid cross-contamination by changing gloves or sterilizing gloves with ethanol between infiltrations and by not watering the plants until the day after the inoculation.
4. Scoring:  
Score macroscopic responses about 3 days after infiltration when the cell death phenotype is clear (**Figure 1**). If the cell death phenotype is quantitative, use the given criteria (**Figure 2**). Briefly, the scales for macroscopic scoring of cell death mainly depend on the cell death percentages of the infiltrated area. Percentages of cell death are depicted on a scale from 0% (no symptoms) to 100% (confluent cell death). Intermediate responses range from weak responses such as chlorosis to increasing levels of cell death. If desired, the macroscopic scoring can also be quantitatively assessed using modern photo-imaging equipment.

### 3. PVX Agroinfection

1. Plant material:  
For *N. benthamiana*, use around 2-3 week old seed-grown plants. For potato, use around 2-3 week old transplants from *in vitro*. For large-scale tests, use slightly older (4-5 weeks) plants, as these plants have more and larger leaves to accommodate higher numbers of *Agrobacterium* inoculation spots.
2. *Agrobacterium* culturing:
  1. Prepare the YEB medium in advance. Fill the 10 ml tubes with 3 ml YEB supplemented with the appropriate antibiotics. Pipette 20 µl glycerol stock of the desired strains (**Table 2**) (containing the gene of interest) into the YEB. Initiate cultures for all the *Agrobacterium* strains in this assay at the same time. Incubate cells by shaking for 1-2 days at 28 °C and 200 rpm to an OD<sub>600</sub> of approximately 1.0.
  2. Pipette about 300 µl of each *Agrobacterium* strain and spread them onto LB solid agar medium plates supplemented with the appropriate antibiotics and incubate cells at 28 °C for 1-2 days.
3. Infections:  
Use a spatula to collect the *Agrobacterium* culture in the plate. Dip a wooden toothpick in the *Agrobacterium* culture on the spatula and pierce the leaves to inoculate large amount of bacteria. Inoculate at least three plants for each strain. Use three leaves per plant to serve as triplicates. In each leaf, make multiple inoculation sites for each strain.
4. Scoring:

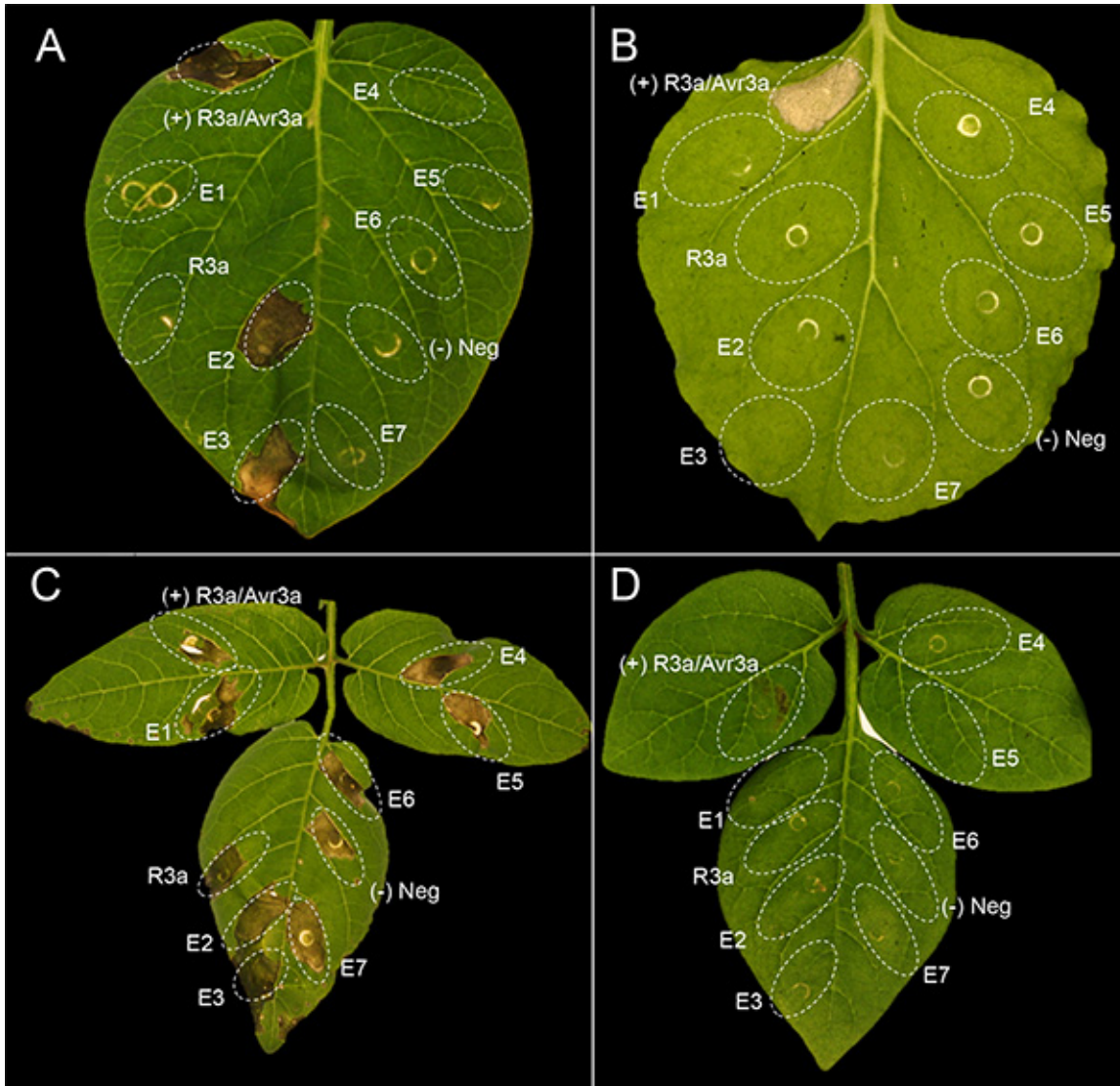
Score macroscopic responses about two weeks after inoculation (**Figure 3**). For high-throughput screens, record the qualitative responses (yes/no) for each inoculation spot. Then calculate the percentage of responding sites and compare them with controls.

## Representative Results

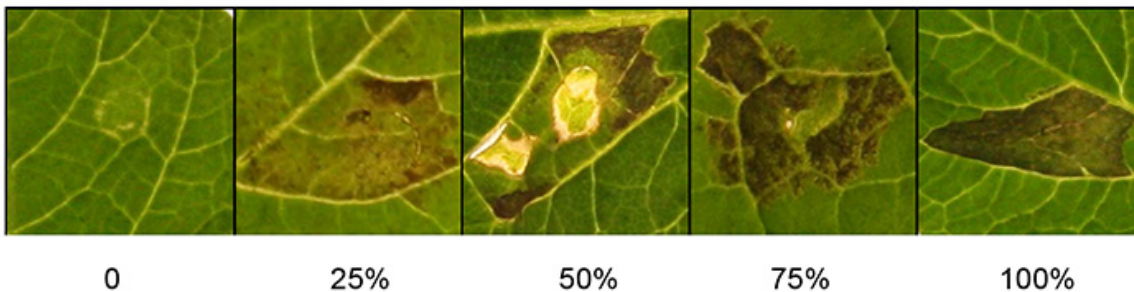
**Figure 1** shows a representative experiment of agroinfiltration with 7 different effectors (E1-E7) in potato and *N. benthamiana*. Cell death appears in the infiltrated leaf panels about 3 days after infiltration. The extent of the cell death phenotype needs to be compared with the controls. A mixture of the *Agrobacterium* strain AGL1(pVirG)<sup>23</sup> containing pBINplus-R3a and pK7WG2-AVR3a was used as positive control<sup>24,25</sup>, while AGL1(pVirG) was used as negative control. **Figures 1A** and **1B** show good examples of agroinfiltration in the potato genotype MaR8 (Mastenbroek R8)<sup>26</sup> and *N. benthamiana*, respectively, which are very amenable for agroinfiltration. There is confluent cell death in the leaf panel coinfiltrated with positive control, while no cell death response occurs with negative control or pBINplus-R3a. In MaR8, two effectors AVR3a (E2) and AVR4 (E3) induce a cell death, while the other effectors (E1 and E4-E7) do not. In *N. benthamiana*, none of the tested effectors induce a cell death response. **Figures 1C** and **1D** show examples of agroinfiltration in the wild potato *Solanum berthaultii* 483-1 and *Solanum rechei* 210-5, which are not well amenable for the agroinfiltration technique. In *S. berthaultii* 483-1, the leaf tissue shows a nonspecific necrosis to negative controls as well as to all tested effectors. In *S. rechei* 210-5, infiltrated leaf panels show very weak cell death response to positive control.

**Figure 2** shows a range of scoring scales that can be used to quantify the response to agroinfiltrated *Agrobacterium*. Percentages of cell death are depicted on a scale 0-100%. Observed phenotypes range from macroscopically not visible symptoms (0%), through a range of intermediate responses displaying chlorosis and increasing levels of cell death, up to confluent cell death (100%).

**Figure 3** shows a representative experiment after PVX agroinfection in potato. Normally, expanding cell death can be found at the sites about two weeks after tooth-pick inoculation. As shown in both figure panels, expanding cell death is present at the sites that were tooth-pick inoculated with pGR106-CRN2 (positive control using the effector crinkler Crn2), which is a general cell death inducing gene from *P. infestans*<sup>27</sup>. Apart from minor response to wounding, no expanding cell death is noted at the sites that were tooth-pick inoculated with the pGR106-empty (negative control). In **Figure 3A**, representing the potato genotype MaR3 (Mastenbroek R3), two pGR106-effectors (E1 and E2) did not induce cell death. In **Figure 3B**, a positive result of effector screening in the wild *Solanum huancabambense* 354-1 is presented; cell death response was observed to two pGR106-effectors (E1-E3, representing elicitors)<sup>28</sup>.

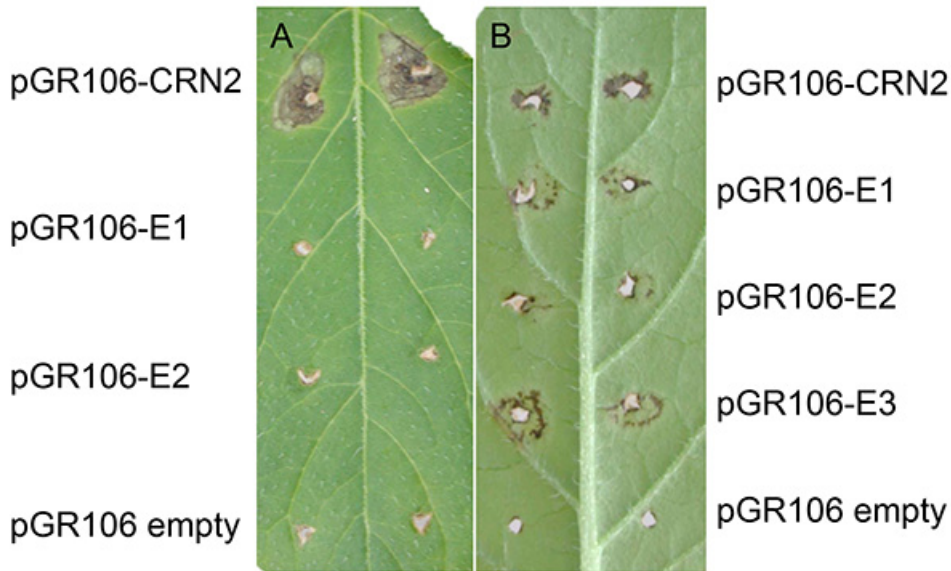


**Figure 1. Examples of agroinfiltration in potato and *N. benthamiana*.** Plants including (A) a potato genotype MaR8 (Mastenbroek R8), (B) *N. benthamiana*, (C) *Solanum berthaultii* 483-1 and (D) *Solanum rechei* 210-5 were infiltrated with a mixture of the *Agrobacterium* strain AGL1(pVirG)<sup>23</sup> containing pBINplus-R3a and pK7WG2-AVR3a (positive control), AGL1(pvirG) (negative control), pBINplus-R3a, and seven effectors (E1-E7). [Click here to view larger image.](#)



**Figure 2. Quantification of agroinfiltration responses.** The photograph shows representative scoring scales for cell death, ranging from 0% (no symptoms) to 100% (confluent cell death). Intermediate responses range from weak responses such as chlorosis to increasing levels of cell death. [Click here to view larger image.](#)





**Figure 3. Examples of PVX agroinfection in potato.** Potato genotype MaR3 (Mastenbroek R3) (A) and *Solanum huancabambense* 354-1 (B) tooth-pick inoculated with pGR106-CRN2 (positive control), pGR106-empty (negative control) and pGR106-E1-2 (effectors), or pGR106-E1-E3, respectively. [Click here to view larger image.](#)

**Table 1. YEB medium**

1 L	distilled H <sub>2</sub> O
5 g	sucrose
5 g	beef extract
5 g	bacteriological peptone
1 g	yeast extract
2 ml	MgSO <sub>4</sub> (1 M)

**Table 2. Vectors and strains used for agroinfiltration and PVX agroinfection.** Several binary vectors can be used. Vectors in the list below allow high expression of the candidate genes and have worked well in our hands. We prefer using the *Agrobacterium strain* GV3101(pMP90)<sup>29</sup> in *N. benthamiana* and find AGL1<sup>30</sup> containing the helper plasmid pVirG (pBBR1MCS-5.virGN54D)<sup>23</sup> more suitable in potato<sup>31</sup>. Additional strains have been analyzed in other groups on various model plants including *N. benthamiana* but not in potato<sup>32</sup>.

Assay	Vector	Reference	Antibiotics for vector selection (50 µg/ml)
Agroinfiltration	pBINplus (GW)	33	Kanamycin
	pK7WG2 (GW)	34	Spectinomycin
	pCB302-3 (GW)	35	Kanamycin
	pMDC32 (GW)	36	Kanamycin
PVX agroinfection	pGR106	20	Kanamycin

GW: gateway version<sup>36</sup>

**Table 3. MMA medium.**

1 L	distilled H <sub>2</sub> O
20 g	sucrose
5 g	MS salts (without vitamins)
1.95 g	MES
2 ml	NaOH (1M)
1 ml	Acetosyringone (200 mM)

Adjust the pH to 5.6.

## Discussion

Transient assays like agroinfiltration and agroinfection are efficient methods that are vital to modern molecular plant pathology research. Despite some limitations, these methods meet the demand for efficient and robust high-throughput functional analysis in plants.

The agroinfiltration system is a widely used functional assay in a range of plant species. Agroinfiltration facilitates the delivery of several transgenes into the same cell with simultaneous expression of interacting proteins. This is advantageous for recapitulating R-AVR relationships, by coinfiltrating *Agrobacterium* strains that express *Avr* genes with strains that express the matching *R* genes. Also, for known R-AVR pairs, such coinfiltrations can be used as positive controls. Including such controls is important because in some plant genotypes, the transformation efficiency can be below the threshold to detect responses. Including negative controls, e.g. an *Agrobacterium* strain containing a vector without a gene insert, is also essential to determine whether a certain plant genotype raises nonspecific defense responses to the *Agrobacterium*. This feature occurs at a certain frequency in potato germplasm, and not all *Solanum* species are well suitable for this *Agrobacterium*-based expression system. Generally, the agroinfiltration assay works very well in *N. benthamiana* and most potato genotypes. In addition to effectoromics, there are various other potential applications for the agroinfiltration technique, such as production of proteins from transgenes and protein localization in plant cells by confocal microscopy.

PVX agroinfection is a highly sensitive screening system and typically more suitable for high-throughput screenings. Since the *Agrobacterium* is now only locally present, nonspecific responses to this bacterium are now not very disturbing, as the PVX virus takes over further spread of the transgene. However, plants may be resistant to PVX, or mount extreme resistance (ER) responses, and in that case the agroinfection method is not suitable. Another limitation of the PVX agroinfection method is the insert size of the gene of interest. Observed phenotypes of responses may vary from an intense black necrosis surrounding the wound to faint necrosis near the inoculation spot. In both *N. benthamiana* and *Solanum* species, PVX agroinfection is recognized as more sensitive than agroinfiltration.

Keeping into account that the genetic background of the diverse tested plant genotypes can have some restrictions (see above), we generally obtain similar conclusions by PVX agroinfection and agroinfiltration. These results are also comparable as obtained in other assays, such as protein infiltrations<sup>29</sup> and ELISA<sup>3</sup>. Considering the advantages and limitations of both systems, we recommend using both methods to either complement each other or confirm independent results.

## Disclosures

The authors declare that they have no competing financial interests.

## Acknowledgements

The work is partially supported by Wageningen University Fund (WUF), China Scholarship Council Program for Graduate Students, and a NWO-VIDI grant 12378.

## References

1. Vleeshouwers, V. G. A. A. *et al.* Understanding and exploiting late blight resistance in the age of effectors. *Ann. Rev. Phytopathol.* **49**, 507-531 (2011).
2. Ellis, J. G., Rafiqi, M., Gan, P., Chakrabarti, A. & Dodds, P. N. Recent progress in discovery and functional analysis of effector proteins of fungal and oomycete plant pathogens. *Curr. Opin. Plant Biol.* **12**, 399-405 (2009).
3. Vleeshouwers, V. G. A. A. *et al.* Effector genomics accelerates discovery and functional profiling of potato disease resistance and *Phytophthora infestans* avirulence genes. *Plos One.* **3**, 1-10 (2008).
4. Oh, S. K. *et al.* In planta expression screens of *Phytophthora infestans* RXLR effectors reveal diverse phenotypes, including activation of the *Solanum tuberosum* disease resistance protein Rpi-blb2. *Plant Cell.* **21**, 2928-2947 (2009).
5. Tyler, B. M. *et al.* *Phytophthora* genome sequences uncover evolutionary origins and mechanisms of pathogenesis. *Science.* **313**, 1261-1266 (2006).
6. Haas, B. J. *et al.* Genome sequence and analysis of the Irish potato famine pathogen *Phytophthora infestans*. *Nature.* **461**, 393-398 (2009).

7. Levesque, C. A. *et al.* Genome sequence of the necrotrophic plant pathogen *Pythium ultimum* reveals original pathogenicity mechanisms and effector repertoire. *Genome Biol.* **11**, 1-22 (2010).
8. Lamour, K. H., Win, J. & Kamoun, S. Oomycete genomics: new insights and future directions. *FEMS Microbiol. Lett.* **274**, 1-8 (2007).
9. Stassen, J. H. M. *et al.* Effector identification in the lettuce downy mildew *Bremia lactucae* by massively parallel transcriptome sequencing. *Mol. Plant Pathol.* **13**, 719-731 (2012).
10. Kemen, E. *et al.* Gene gain and loss during evolution of obligate parasitism in the white rust pathogen of *Arabidopsis thaliana*. *PLoS Biol.* **9**, 1-21 (2011).
11. Win, J. *et al.* Effector biology of plant-associated organisms: concepts and perspectives. *Cold Spring Harb. Symp. Quant. Biol.* 1-13 (2012).
12. Hogenhout, S. A., van der Hoorn, R. A. L., Terauchi, R. & Kamoun, S. Emerging concepts in effector biology of plant-associated organisms. *Mol. Plant Microbe Interact.* **22**, 115-122 (2009).
13. Kamoun, S. A catalogue of the effector secretome of plant pathogenic oomycetes. *Ann. Rev. Phytopathol.* **44**, 41-60 (2006).
14. van der Hoorn, R. A. L., Laurent, F., Roth, R. & De Wit, P. J. G. M. Agroinfiltration is a versatile tool that facilitates comparative analyses of Avr9/Cf-9-induced and Avr4/Cf-4-induced necrosis. *Mol. Plant Microbe Interact.* **13**, 439-446 (2000).
15. Dangl, J. L. & Jones, J. D. G. Plant pathogens and integrated defence responses to infection. *Nature.* **411**, 826-833 (2001).
16. Kapila, J., de Rycke, R., van Montagu, M. & Angenon, G. An *Agrobacterium*-mediated transient gene expression system for intact leaves. *Plant Sci.* **122**, 101-108 (1997).
17. Kanneganti, T. D., Huitema, E. & Kamoun, S. *In planta* expression of oomycete and fungal genes. *Methods Mol. Biol.* **354**, 35-43 (2007).
18. Vleeshouwers, V. G. G. A. & Rietman, H. *In planta* expression systems. *Oomycete Genetics and Genomics: Diversity, Interactions, and Research Tools.* eds K. Lamour & S. Kamoun. **23**, 455-475 (2009).
19. Peng, W. T., Lee, Y. W. & Nester, E. W. The phenolic recognition profiles of the *Agrobacterium tumefaciens* VirA protein are broadened by a high level of the sugar binding protein ChvE. *J. Bacteriol.* **180**, 5632-5638 (1998).
20. Lu, R. *et al.* High throughput virus-induced gene silencing implicates heat shock protein 90 in plant disease resistance. *EMBO J.* **22**, 5690-5699 (2003).
21. Ma, L., Lukasik, E., Gawehns, F. & Takken, F. L. W. The use of agroinfiltration for transient expression of plant resistance and fungal effector proteins in *Nicotiana benthamiana* leaves. *Methods Mol. Biol.* **835**, 61-74 (2012).
22. Bhaskar, P. B., Venkateshwaran, M., Wu, L., Ané, J. M. & Jiang, J. *Agrobacterium*-mediated transient gene expression and silencing: A rapid tool for functional gene assay in potato. *Plos One.* **4**, 1-8 (2009).
23. van der Fits, L., Deakin, E. A., Hoge, J. H. C. & Memelink, J. The ternary transformation system: constitutive virG on a compatible plasmid dramatically increases *Agrobacterium*-mediated plant transformation. *Plant Mol. Biol.* **43**, 495-502 (2000).
24. Huang, S. *et al.* Comparative genomics enabled the isolation of the *R3a* late blight resistance gene in potato. *Plant J.* **42**, 251-261 (2005).
25. Armstrong, M. R. *et al.* An ancestral oomycete locus contains late blight avirulence gene *Avr3a*, encoding a protein that is recognized in the host cytoplasm. *Proc. Natl. Acad. Sci. U.S.A.* **102**, 7766-7771 (2005).
26. Kim, H. J. *et al.* Broad spectrum late blight resistance in potato differential set plants MaR8 and MaR9 is conferred by multiple stacked *R* genes. *Theor. Appl. Genet.* **124**, 923-935 (2012).
27. Torto, T. A. *et al.* EST mining and functional expression assays identify extracellular effector proteins from the plant pathogen *Phytophthora*. *Genome Res.* **13**, 1675-1685 (2003).
28. Vleeshouwers, V. G. G. A. *et al.* Agroinfection-based high-throughput screening reveals specific recognition of INF elicitors in *Solanum*. *Mol. Plant Pathol.* **7**, 499-510 (2006).
29. Koncz, C. & Schell, J. The promoter of  $T_L$ -DNA gene 5 controls the tissue-specific expression of chimeric genes carried by a novel type of *agrobacterium* binary vector. *Mol. Gen. Genet.* **204**, 383-396 (1986).
30. Lazo, G. R., Stein, P. A. & Ludwig, R. A. A DNA transformation-competent *Arabidopsis* genomic library in *Agrobacterium*. *Bio-Technol.* **9**, 963-967 (1991).
31. Rietman, H. *Putting the Phytophthora infestans genome sequence at work; multiple novel avirulence and potato resistance gene candidates revealed.* PhD thesis, Wageningen University, (2011).
32. Wroblewski, T., Tomczak, A. & Michelmore, R. Optimization of *Agrobacterium*-mediated transient assays of gene expression in lettuce, tomato and *Arabidopsis*. *Plant Biotechnol. J.* **3**, 259-273 (2005).
33. van engelen, F. A. *et al.* pBINPLUS - an improved plant transformation vector based on pBIN19. *Transgenic Res.* **4**, 288-290 (1995).
34. Karimi, M., Inze, D. & Depicker, A. GATEWAY™ vectors for *Agrobacterium*-mediated plant transformation. *Trends Plant Sci.* **7**, 193-195 (2002).
35. Xiang, C. B., Han, P., Lutziger, I., Wang, K. & Oliver, D. J. A mini binary vector series for plant transformation. *Plant Mol. Biol.* **40**, 711-717 (1999).
36. Curtis, M. D. & Grossniklaus, U. A gateway cloning vector set for high-throughput functional analysis of genes *in planta*. *Plant Physiol.* **133**, 462-469 (2003).