

## Hypothesis

# Much Ado about $\text{Na}^+$ in the atrium: modelling tissue sodium as a highly sensitive marker of subclinical and localized oedema

 Giacomo Rossitto,  Rhian M. Touyz,  Mark C. Petrie and  Christian Delles

Institute of Cardiovascular and Medical Sciences, University of Glasgow, Glasgow, U.K.

**Correspondence:** Giacomo Rossitto (Giacomo.Rossitto@glasgow.ac.uk)



Hypertonic  $\text{Na}^+$  accumulation in peripheral tissues is a recently described phenomenon: it has been associated with ageing, hypertension, diabetes, chronic kidney disease and heart failure, but its clinical meaning has yet to be determined. This concept conflicts with the classic physiological paradigm of constant balance between salt intake and excretion, and its water-independent nature is still a matter of debate.

We developed a theoretical model explaining changes in the chemical composition of tissues as a function of extracellular volume fraction and excess extracellular fluid, i.e. oedema. The model suggests that the proportional increase in absolute  $\text{Na}^+$  content and concentration due to different degrees of oedema is higher than the parallel increase in water content, thus making  $\text{Na}^+$  a more sensitive index to detect this oedema.

Our model would explain some of the recent findings of high tissue  $\text{Na}^+$  content in pathological conditions. More importantly, it prompts the reappraisal of tissue  $\text{Na}^+$  analysis from being a topic of niche interest to a potential diagnostic tool with broad applicability in the investigation of subclinical systemic and localized oedema.

## A paradigm shift: from equilibrium to local hypertonic sodium accumulation

Classic physiology advocates the ultimate achievement of a constant balance between salt intake and excretion. At variance, over the last few years work by Titze and his collaborators has highlighted the phenomenon of hypertonic sodium ( $\text{Na}^+$ ) accumulation in peripheral tissues. Having observed considerable changes in total body  $\text{Na}^+$  without corresponding changes in body weight in a human long-term balance study [1], they first proposed skin as an extensive depot for water-independent  $\text{Na}^+$  storage based on studies in rodents [2]. Further preclinical investigations identified local regulatory mechanisms, entailing glycosaminoglycans as the putative binding site and tonicity-dependent modulation of skin lymphatic vessels as a buffering system [3,4], as well as the hypertensive phenotype associated with their disruption.

Availability of  $^{23}\text{Na}$ -magnetic resonance imaging ( $^{23}\text{Na}$ -MRI) allowed translation back to humans: an increase in skin  $\text{Na}^+$  content occurs with ageing; in patients with refractory hypertension or primary aldosteronism compared to normotensive controls [5,6]; and in other clinical conditions such as acute heart failure [7], systemic sclerosis [8] and diabetes [9]. Skin  $\text{Na}^+$  also correlates better than total body overhydration or blood pressure with left ventricular mass in patients with chronic kidney disease [10], thus stimulating the quest for interventions specifically targeting tissue  $\text{Na}^+$  to improve cardiovascular outcomes in this population.

Overall, this new notion of local  $\text{Na}^+$  accumulation was acknowledged by independent influential reports as a paradigm shift [11,12], closely linked to the enormous public health burden of ageing and cardiovascular disease, which deserves a clearer understanding [12].

Received: 30 June 2018  
Revised: 17 October 2018  
Accepted: 02 November 2018

Version of Record published:  
13 December 2018

## A Na<sup>+</sup> model beyond the skin

The above MRI studies, which were all performed in the lower leg, revealed an increase in <sup>23</sup>Na signal not only in the skin but also in the skeletal muscle [6,7,9]; this is at odds with mechanisms for hypertonic Na<sup>+</sup> accumulation, described as skin-specific in the preclinical studies.

In an attempt to study whether a similar phenomenon could be generalized to other tissues, we analyzed myocardial water and total electrolyte composition in a rodent model of ageing and hypertension [13]. After tissue digestion, we observed an increase in tissue Na<sup>+</sup> content and concentration, which was not hypertonic, but paralleled by water accrual and an associated decrease in potassium (K<sup>+</sup>) concentration, previously described by others as a ‘loss’ [2].

We, therefore, developed a simple mathematical model (Supplementary Information for calculations) for predicting total Na<sup>+</sup> and K<sup>+</sup> composition of any tissue, as a function of the extracellular volume fraction (ECV%): intuitively, the higher the ECV% (i.e. the proportion of the Na<sup>+</sup>-rich extracellular solution), the higher the total concentration of Na<sup>+</sup> in the ‘final solution’ from whole tissue (Figure 1, left panel, open circles). Vice versa, the decrease in K<sup>+</sup> concentration is explained by a proportionally less represented intracellular, K<sup>+</sup>-rich compartment (Figure 1, left panel, open squares), without any ‘loss’.

More importantly, we interpreted the increase in water content and the overall unchanged sum of Na<sup>+</sup> and K<sup>+</sup> in our experiment as ‘isotonic’ oedema. Accordingly, we challenged the above model by simulating the effect of adding a fixed and biologically plausible moiety of fluid (e.g. 1%, 2.5% or 5%), equal in composition to the extracellular Na<sup>+</sup>-rich solution, to the tissues (i.e. oedema). This shifted the curves up for Na<sup>+</sup> and down for K<sup>+</sup>, as expected from the equivalent of a global increase in ECV% (Figure 1, left panel, closed symbols for 5% oedema). Unexpectedly, however, we also noted that the proportional increase in tissue Na<sup>+</sup> concentration due to oedema was much higher than the increase in water in tissues where the ECV% is low, such as skeletal muscle and myocardium with an ECV% of 16–20% and 25–30%, respectively (Figure 1, right panel; black lines). This phenomenon is even more pronounced and holds true across all the spectrum of possible ECV% when absolute Na<sup>+</sup> content, rather than concentration, is taken into account (Figure 1, right panel; red lines).

With due consideration of experimental variability, this theoretical model is in keeping with data from us and others [2–4,13,14]. Moreover, the concept of a ‘final solution’ applies to chemical analysis of ashed [2,4] and/or digested [13] tissues, but also to any other technique that does not allow (accurate) spatial differentiation of intracellular and extracellular compartments. This is the case for MRI voxels in clinical practice: apart from some approaches currently limited to research [15,16], <sup>23</sup>Na-MRI only offers ‘total’ <sup>23</sup>Na signal thus far. Indeed, measurement of absolute changes (i.e. red lines; Figure 1) rather than concentration is much closer to what MRI actually does when recording signals from single atoms. Recent evidence of higher sensitivity of <sup>23</sup>Na-based analysis over standard <sup>1</sup>H T<sub>2</sub> MRI approaches to monitor acute ischaemic extracellular compartment changes within skeletal muscle in humans [15] supports our contentions.

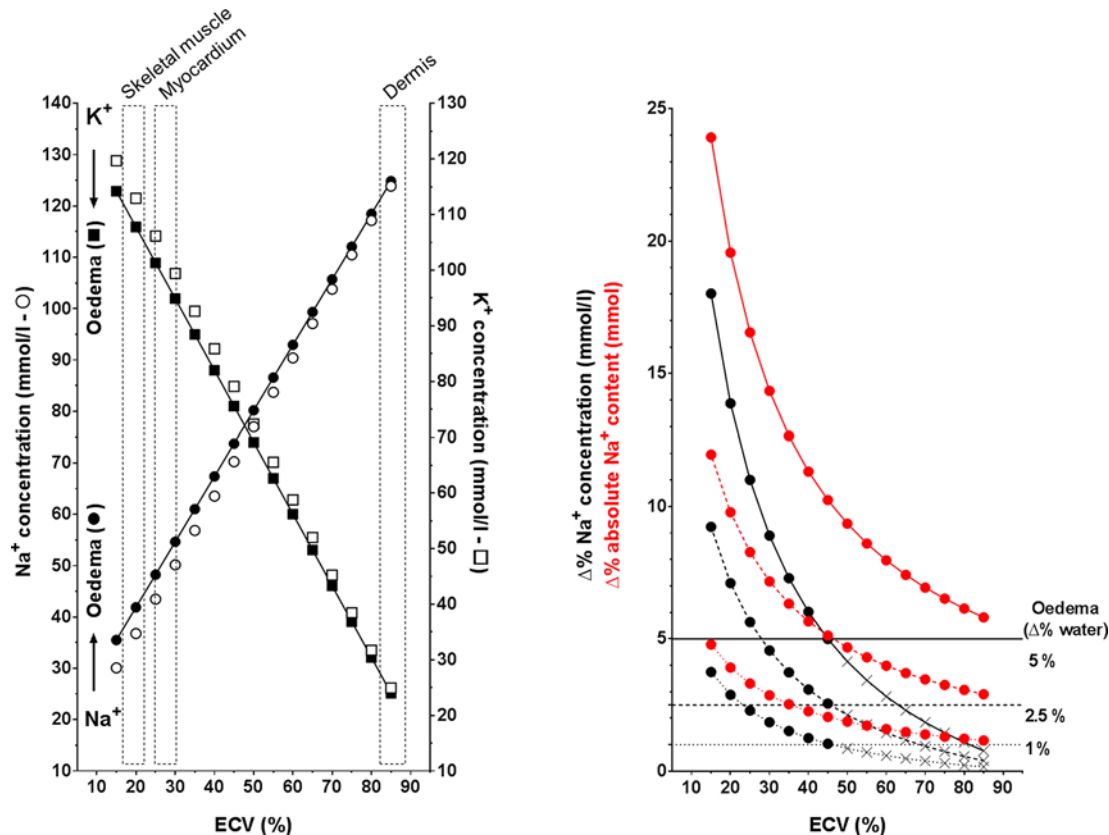
## Implications of the model

In our view this model has broad and important implications.

First, relative differences and/or changes in the proportion of intracellular and extracellular compartments in a tissue affect total tissue Na<sup>+</sup> and K<sup>+</sup> concentrations *per se*.

Second, as long as one has valid tools for its measurement (e.g. tissue chemical analysis by flame photometry/absorption spectroscopy or non-invasive MRI), Na<sup>+</sup> can be much (up to 3.5–4 times) more sensitive than water itself to detect oedema. Therefore, it is no more acceptable to claim solely for a ‘more pronounced Na<sup>+</sup> – than water – accumulation’ [14] to support its water-free, hypertonic nature. In fact, when parallel changes in skin or muscle water content were carefully examined, despite sometimes lacking statistical significance due to the difference in sensitivity described above, they could often be detected [9,10,13].

Third, as an Occamian consequence of the two above, our model could justify most of the proportionally higher increase in Na<sup>+</sup> moles or <sup>23</sup>Na-MR signal in tissues observed thus far, without the need for it to represent a novel, water-independent phenomenon. Skin and particularly the relatively acellular, glycosaminoglycans-rich dermis, where an excess of total osmolytes has been more convincingly demonstrated [2–4,14], are possible exceptions, which could offer a depot for a Na<sup>+</sup> excess storage at least in part hypertonic [17]. With this regard, a parallelism between the physiology of kidney and skin, both acting as ‘barrier’ organs, has been suggested [18]. However, we wonder how much of that Na<sup>+</sup> excess is due to the accumulation of Na<sup>+</sup> itself or, rather, to a relative deficit of water which went lost at the barrier at some point and left its accompanying Na<sup>+</sup> behind. In line with this argument, the finalistic dominance of body water – over Na<sup>+</sup> – homeostasis has been recently reappraised [19].



**Figure 1. Model for chemical composition of tissues and impact of oedema**

Left panel: Expected total concentration of Na<sup>+</sup> (open circles) and K<sup>+</sup> (open squares) in a tissue, before and after addition of 5% of oedema (closed squares and circles, respectively), as a function of the extracellular volume fraction (ECV%). Values for representative tissues with different ECV% are shown in dashed boxes. Right panel: Percentage change of tissue Na<sup>+</sup> concentration (black) or absolute content (red) after addition of 1% (dotted line), 2.5% (dashed line) or 5% (continuous line) oedema to the tissue, as a function of the extracellular volume fraction (ECV%).

These speculations could possibly in part reconcile contrasting positions within the field of salt research. In particular, our work does not aim to disprove the occurrence of any hypertonic Na<sup>+</sup> accumulation at all, but to highlight that the high salt tissue signal observed in ageing, uncontrolled and/or secondary hypertension, diabetes, CKD, heart failure and systemic sclerosis is likely to be (at least in a considerable part) a different phenomenon. In a sense, to the ‘hypothetical framework’ described by Bhawe and Neilson [17] to explain ‘real’ water-independent Na<sup>+</sup> storage, our model adds another but seemingly highly prevalent mechanism for ‘apparent’ water-independent Na<sup>+</sup> storage.

Furthermore, of much broader interest to the medical community at large, our model could help address the largely unmet need to diagnose subclinical and/or local oedema, as outlined below.

## The potential for ‘isotonic’ Na<sup>+</sup> excess investigation

### Systemic (subclinical) congestion

The <sup>23</sup>Na-MRI data collected in different patient populations at-risk-of [6,7,9,10] or with clinically overt heart failure [6,7,9,10], together with the chemical data in our rodent model of ageing and hypertension, point to a common increase in tissue Na<sup>+</sup> content and, as a consequence of the model, to subclinical congestion. We now interpret many of the aforementioned ‘at-risk’ patients as affected by subclinical (or clinically unrecognized) heart failure that tissue Na<sup>+</sup> analysis could make evident.

Classic diuretic interventions (i.e. loop-diuretics) or novel approaches such as SGLT2-inhibition, which ultimately produces a natriuretic/diuretic-like effect, are both effective in reducing tissue Na<sup>+</sup> [7,9]. It therefore comes as no surprise that the former is the cornerstone for heart failure treatment and the latter offered tremendous and unexpected

reduction in incident heart failure hospitalizations and deaths, even when used in not-overtly congested diabetic patients [20].

## Local oedema

In addition to the cardiovascular field, appreciation of the direct link between the  $^{23}\text{Na}$  signal and oedema and of its higher sensitivity to detect oedema compared with water (Figure 1, right panel; red lines) prompts development of multiple  $^{23}\text{Na}$ -MRI applications also in the whole range of diseases where mechanical or inflammatory localized oedema is implicated, including rheumatological, immunological, oncological and neurological conditions. As an example, both global and regional differences in total  $^{23}\text{Na}$  brain signal were found in multiple sclerosis patients compared to controls [16]. The diagnostic potential, even if more sophisticated analysis of intra-extracellular  $\text{Na}^+$  transmembrane regulation within lesions is still limited to research, seems obvious:  $^{23}\text{Na}$ -MRI could represent a radionuclide-free, ‘endogenous’ PET for early (or late) oedema. In addition, relatively inexpensive chemical investigation in preclinical models might similarly help identifying and addressing early stages of diseases.

## Conclusions

In conclusion, we acknowledge that our model lacks the detailed insights discussed extensively in many physiological reviews by others, for example in terms of interstitial dynamics and biophysical properties [17]. However, it provides a pragmatic, deliberately simple but also clear-cut demonstration that the sole addition of an extra moiety of fluid, equal in composition to the extracellular, i.e. oedema, has a considerable impact on total tissue  $\text{Na}^+$  *per se*. As a result, the model offers a somewhat ‘traditional’, water-paralleled perspective on what appeared as a ‘new’ phenomenon. While our hypothesis obviously warrants further validation, we believe there is clinical utility for tissue- $\text{Na}^+$  analysis beyond the physiology laboratory. Our paradigm could be useful in many clinical disciplines where oedema is a key pathological component.

## Clinical perspectives

- Tissue accumulation of sodium is a recently described phenomenon and is thought to be associated with a wide range of cardiovascular diseases. It has been suggested to be water independent but remains incompletely understood.
- Based on a simple model of the chemical (water and cations) content of tissue, we demonstrate that changes in the proportion of intracellular and extracellular compartments in a tissue affect total tissue  $\text{Na}^+$  and  $\text{K}^+$  concentrations *per se* and that sodium is intrinsically more sensitive than water itself to identify oedematous conditions.
- Our model could provide an explanation that could explain the high tissue sodium content found in different pathological conditions. More importantly, tissue sodium analysis has broad potential in the early diagnosis of subclinical and/or localized oedema.

## Author Contribution

G.R. designed and performed the experiments from which the model is derived, developed the conceptual idea and theoretical formalism for it, performed the calculations and drafted the manuscript. C.D., R.M.T. and M.C.P. provided key input to the development of the conceptual idea and to the manuscript in its final form.

## Competing Interests

The authors declare that there are no competing interests associated with the manuscript.

## Funding

This work was supported by the British Heart Foundation (BHF) [Centre of Research Excellence Award, RE/13/5/30177].

## Abbreviations

ECV%, extracellular volume fraction; MRI, magnetic resonance imaging; PET, positron emission tomography; SGLT2, sodium/glucose cotransporter 2.

## References

- 1 Titze, J., Maillet, A., Lang, R., Gunga, H.C., Johannes, B., Gauquelin-Koch, G. et al. (2002) Long-term sodium balance in humans in a terrestrial space station simulation study. *Am. J. Kidney Dis.* **40**, 508–516, <https://doi.org/10.1053/ajkd.2002.34908>
- 2 Titze, J., Bauer, K., Schaffhuber, M., Dietsch, P., Lang, R., Schwind, K.H. et al. (2005) Internal sodium balance in DOCA-salt rats: a body composition study. *Am. J. Physiol. Ren. Physiol.* **289**, F793–802, <https://doi.org/10.1152/ajprenal.00096.2005>
- 3 Machnik, A., Neuhofer, W., Jantsch, J., Dahlmann, A., Tammela, T., Machura, K. et al. (2009) Macrophages regulate salt-dependent volume and blood pressure by a vascular endothelial growth factor-C-dependent buffering mechanism. *Nat. Med.* **15**, 545–552, <https://doi.org/10.1038/nm.1960>
- 4 Wiig, H., Schroder, A., Neuhofer, W., Jantsch, J., Kopp, C., Karlsen, T.V. et al. (2013) Immune cells control skin lymphatic electrolyte homeostasis and blood pressure. *J. Clin. Invest.* **123**, 2803–2815, <https://doi.org/10.1172/JCI60113>
- 5 Kopp, C., Linz, P., Wachsmuth, L., Dahlmann, A., Horbach, T., Schofl, C. et al. (2012) <sup>23</sup>Na magnetic resonance imaging of tissue sodium. *Hypertension* **59**, 167–172, <https://doi.org/10.1161/HYPERTENSIONAHA.111.183517>
- 6 Kopp, C., Linz, P., Dahlmann, A., Hammon, M., Jantsch, J., Muller, D.N. et al. (2013) <sup>23</sup>Na magnetic resonance imaging-determined tissue sodium in healthy subjects and hypertensive patients. *Hypertension* **61**, 635–640, <https://doi.org/10.1161/HYPERTENSIONAHA.111.00566>
- 7 Hammon, M., Grossmann, S., Linz, P., Kopp, C., Dahlmann, A., Garlachs, C. et al. (2015) <sup>23</sup>Na magnetic resonance imaging of the lower leg of acute heart failure patients during diuretic treatment. *PLoS One* **10**, e0141336, <https://doi.org/10.1371/journal.pone.0141336>
- 8 Kopp, C., Beyer, C., Linz, P., Dahlmann, A., Hammon, M., Jantsch, J. et al. (2017) Na<sup>+</sup> deposition in the fibrotic skin of systemic sclerosis patients detected by <sup>23</sup>Na-magnetic resonance imaging. *Rheumatology* **56**, 556–560, <https://doi.org/10.1093/rheumatology/kew371>
- 9 Karg, M.V., Bosch, A., Kannenkeril, D., Striepe, K., Ott, C., Schneider, M.P. et al. (2018) SGLT-2-inhibition with dapagliflozin reduces tissue sodium content: a randomised controlled trial. *Cardiovasc. Diabetol.* **17**, 5, <https://doi.org/10.1186/s12933-017-0654-z>
- 10 Schneider, M.P., Raff, U., Kopp, C., Scheppach, J.B., Toncar, S., Wanner, C. et al. (2017) Skin sodium concentration correlates with left ventricular hypertrophy in CKD. *J. Am. Soc. Nephrol.* **8**, 1867–1876, <https://doi.org/10.1681/ASN.2016060662>
- 11 Elijovich, F., Weinberger, M.H., Anderson, C.A., Appel, L.J., Bursztyjn, M., Cook, N.R. et al. (2016) Salt sensitivity of blood pressure: a scientific statement From the American Heart Association. *Hypertension* **68**, e7–e46
- 12 Mancia, G., Oparil, S., Whelton, P.K., McKee, M., Dominiczak, A., Luft, F.C. et al. (2017) The technical report on sodium intake and cardiovascular disease in low- and middle-income countries by the joint working group of the World Heart Federation, the European Society of Hypertension and the European Public Health Association. *Eur. Heart J.* **38**, 712–719
- 13 Rossitto, G., Lacchini, S., A, H., Petrie, M., Touyz, R. and Delles, C. (2017) Abstracts from the 2017 Annual Scientific Meeting of the British and Irish Hypertension Society (BIHS), 0–13. *J. Hum. Hypertens.* **31**, 657–686, <https://doi.org/10.1038/jhh.2017.63>
- 14 Nikpey, E., Karlsen, T.V., Rakova, N., Titze, J.M., Tenstad, O. and Wiig, H. (2017) High-salt diet causes osmotic gradients and hyperosmolality in skin without affecting interstitial fluid and lymph. *Hypertension* **69**, 660–668, <https://doi.org/10.1161/HYPERTENSIONAHA.116.08539>
- 15 Gerhalter, T., Carlier, P.G. and Marty, B. (2017) Acute changes in extracellular volume fraction in skeletal muscle monitored by (<sup>23</sup>)Na NMR spectroscopy. *Physiol. Rep.* **5** (16), 1–13, <https://doi.org/10.14814/phy2.13380>
- 16 Petracca, M., Vancea, R.O., Fleysher, L., Jonkman, L.E., Oesingmann, N. and Inglese, M. (2016) Brain intra- and extracellular sodium concentration in multiple sclerosis: a 7 T MRI study. *Brain* **139**, 795–806, <https://doi.org/10.1093/brain/awv386>
- 17 Bhawe, G. and Neilson, E.G. (2011) Body fluid dynamics: back to the future. *J. Am. Soc. Nephrol.* **22**, 2166–2181, <https://doi.org/10.1681/ASN.2011080865>
- 18 Hofmeister, L.H., Perisic, S. and Titze, J. (2015) Tissue sodium storage: evidence for kidney-like extrarenal countercurrent systems? *Pflugers Arch.* **467**, 551–558, <https://doi.org/10.1007/s00424-014-1685-x>
- 19 Kitada, K., Daub, S., Zhang, Y., Klein, J.D., Nakano, D., Pedchenko, T. et al. (2017) High salt intake reprioritizes osmolyte and energy metabolism for body fluid conservation. *J. Clin. Invest.* **127**, 1944–1959, <https://doi.org/10.1172/JCI8532>
- 20 Zinman, B., Wanner, C., Lachin, J.M., Fitchett, D., Bluhmki, E., Hantel, S. et al. (2015) Empagliflozin, Cardiovascular Outcomes, and Mortality in Type 2 diabetes. *N. Engl. J. Med.* **373**, 2117–2128, <https://doi.org/10.1056/NEJMoa1504720>