

Stocker's line in pterygium

Yusuke Arai MD | Shinji Makino MD, PhD | Hiroto Obata MD, PhD

Department of Ophthalmology, Jichi Medical University, Tochigi, Japan

Correspondence

Shinji Makino, Department of Ophthalmology, Jichi Medical University, Tochigi, Japan.
Email: makichan@jichi.ac.jp

KEYWORDS: iron lines of the cornea, pterygium, Stocker's line

Pterygium is a fibrovascular proliferative disorder in which conjunctival tissue grows medially to cover the clear cornea. It is well known that outdoor work in situations with high light reflectivity enhances pterygium development. Surgical resection is not always necessary for patients without visual disturbance or cosmetic complaint.

A 63-year-old woman presented with a 5-year history of a slow growing wing-shaped ocular surface lesion in the left eye. Her best corrected visual acuity was 1.2 in the right eye and .9 in the left eye. On slit-lamp examination showed marked pterygium that extend from the nasal side of bulbar conjunctiva onto the cornea in the left eye. A vertical gold leaf-like line was also detected at the head of pterygium (Figure 1 arrow). Inferior conjunctival autograft transplantation was performed. One year after the surgery, there was no evidence of recurrence (Figure 2). Her left visual acuity improved to 1.2.

A vertical line at the head of pterygium has been termed Stocker's line.¹⁻⁴ The lesion consisted of corneal linear iron deposition.^{3,4} Several

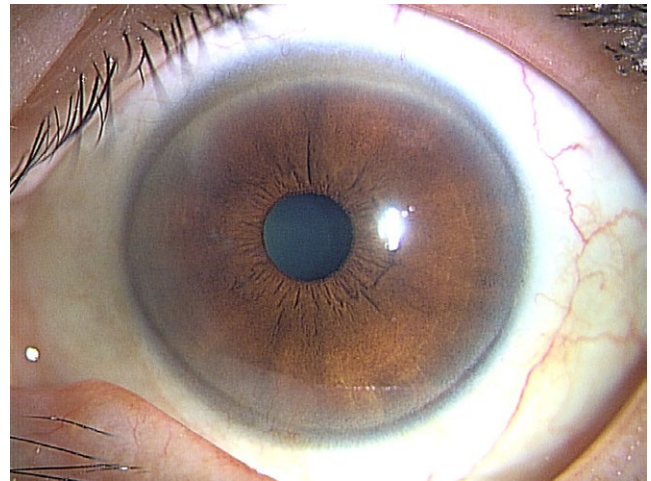


FIGURE 2 Postoperative slit-lamp photograph

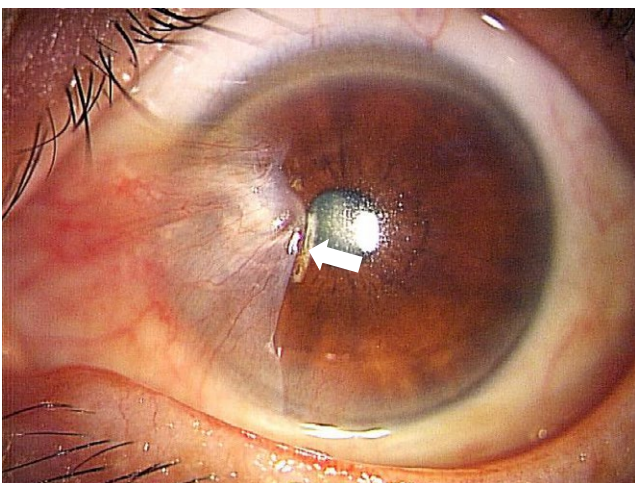


FIGURE 1 Preoperative slit-lamp photograph

iron lines of the superficial cornea are generally recognized in ophthalmology: Fleischer's ring in keratoconus, Hudson-Stähli's line in corneal scar, Ferry's line in filtering bleb, and Stocker's line in pterygium.²⁻⁴ Stocker's line is a punctate, brownish, subepithelial line passing vertically in front of the invasive apex of the pterygium. The mechanism of iron deposition in the development of pterygium is still unknown, but iron level was reported significantly higher in the pterygium tissue than in the normal conjunctiva.⁵

Although pterygium is a common disease, we emphasize that peculiar vertical line related to pterygium.

CONFLICT OF INTERESTS

The authors have stated explicitly that there are no conflicts of interest in connection with this article.

This is an open access article under the terms of the Creative Commons Attribution-NonCommercial-NoDerivs License, which permits use and distribution in any medium, provided the original work is properly cited, the use is non-commercial and no modifications or adaptations are made.

© 2017 The Authors. *Journal of General and Family Medicine* published by John Wiley & Sons Australia, Ltd on behalf of Japan Primary Care Association.

REFERENCES

1. Stocker FW. Eine pigmentierte Hornhautlinie beim Pterygium (Beitrag zur Entstehung von Brüchen in der Bowmanschen Membran). *Klin Monatsbl Augenheilkd* 1939;102:384-48.
2. Stocker FW, Prindle RE. A new type of pigment line in the cornea. *Am J Ophthalmol* 1944;27:341-5.
3. Gass JDM. The iron lines of the superficial cornea. Hudson-Stahli line, Stocker's line and Fleischer's ring. *Arch Ophthalmol* 1964;71:348-58.
4. Loh A, Hadziahmetovic M, Dunaief JL. Iron homeostasis and eye disease. *Biochim Biophys Acta* 2009;1790:637-49.
5. Ortak H, Demir HD, Mendil D, Söğüt E, Ardagil A, Eğri M. Evaluation of iron, zinc, and copper levels in pterygium tissue. *Jpn J Ophthalmol* 2012;56:219-23.

How to cite this article: Arai Y, Makino S, Obata H. Stocker's line in pterygium. *J Gen Fam Med*. 2017;18:92-93. <https://doi.org/10.1002/jgf2.8>.