

Original Paper

Cite this article: Suomenrinne-Nordvik A, Leino T, Shubin M, Auranen K and Vänskä S (2025). Quantifying the direct and indirect components of COVID-19 vaccine effectiveness during the Delta variant era. *Epidemiology and Infection*, **153**, e59, 1–10
<https://doi.org/10.1017/S0950268825000354>

Received: 02 July 2024

Revised: 29 December 2024

Accepted: 07 March 2025

Keywords:



COVID-19; Vaccines; Mathematical modelling

Corresponding author:

Anna Suomenrinne-Nordvik;

Email: anna.suomenrinne-nordvik@thl.fi

Quantifying the direct and indirect components of COVID-19 vaccine effectiveness during the Delta variant era

Anna Suomenrinne-Nordvik¹ , Tuija Leino¹, Mikhail Shubin^{1,2}, Kari Auranen^{1,3} and Simopekka Vänskä¹ 

¹Department of Public Health, Finnish Institute for Health and Welfare, Helsinki, Finland; ²Department of Mathematics and Statistics, University of Helsinki, Helsinki, Finland and ³Department of Mathematics and Statistics, University of Turku, Turku, Finland

Abstract

The efficacy of COVID-19 vaccines against the Delta variant has been observed to be high, both against severe disease and infection. The full population level vaccine effectiveness, however, also contains the indirect effects of vaccination, which require analysis of transmission dynamics to uncover. Finland was close to naïve to SARS-CoV-2 infections before the Delta dominant era, and non-pharmaceutical interventions (NPIs) were at an internationally low level. We utilize Finnish register data and a mathematical model for transmission and COVID-19 disease burden to construct a completely unvaccinated control population and estimate the different components of the vaccine effectiveness. The estimated direct effectiveness was 72% against COVID-19 cases and 87–96% against severe disease outcomes, but the estimated indirect effectiveness was even better, 93% against cases and 94–97% against severe disease. The total and overall effectiveness, including both direct and indirect effects of vaccination, were thus excellent. Our results show how well the population was protected by vaccination during the Delta era, especially by the indirect effectiveness, providing protection also to the unvaccinated part of the population. The estimated averted numbers of hospitalizations, ICU admissions, and deaths in Finland during the Delta era under the implemented NPIs were about 100 times the observed numbers.

Introduction

The COVID-19 pandemic emerged in China at the end of 2019. The disease burden of COVID-19 has been reduced by imposing non-pharmaceutical interventions (NPIs), and by vaccination after COVID-19 vaccines became available. Typically, NPIs have aimed at limiting the spread of infections (SARS-CoV-2) by reducing relevant social contacts or by reducing transmission per contact. COVID-19 vaccination started at the end of 2020 but due to limited supply, the vaccination coverage in Europe and North America increased slowly in the first half of 2021. Many countries started vaccine roll-out from various risk groups, for example, the elderly and those with underlying diseases, and healthcare professionals. In the second half of 2021, that is, during the era of the Delta variant (B.1.617.2), the vaccination coverage rose to at least moderate levels [1], which asks a natural question of the population level effectiveness of vaccination.

To fully evaluate the population level effectiveness of COVID-19 vaccination, different components of effectiveness must be assessed [2]. Following the terminology of Halloran et al. [3], *direct effectiveness* of vaccination is defined as the reduction of risk of a given infection endpoint in the vaccinated part of a partially vaccinated *intervention population*, compared to the unvaccinated part of the same population. To expand from direct effectiveness to *total effectiveness* of vaccination, the vaccinated part of the population is compared against a completely unvaccinated *control population*, comparable to the intervention population in all other aspects relevant to pathogen transmission and disease risk, such as the demographics and level of contacts. The total effectiveness describes the total reduction of risk for the vaccinated individuals. *Indirect effectiveness* compares the unvaccinated part of the intervention population against the control population, capturing the reduction of risk for the unvaccinated individuals in a partially vaccinated population. *Overall effectiveness* of vaccination compares the overall intervention population, including both vaccinated and unvaccinated individuals, against the control population. This measures the full benefits of vaccination on the population level. In addition, comparisons of the overall intervention population against the unvaccinated part of the intervention population have been reported [4, 5], to which we refer here by *direct benefits*.

In Finland, the COVID-19 vaccination was initiated in the beginning of 2021 using a 3-month interval between the first and second doses. Vaccination started from those over 80 years old and risk groups and progressed to the younger age groups following the imported vaccine deliveries.

© The Author(s), 2025. Published by Cambridge University Press. This is an Open Access article, distributed under the terms of the Creative Commons Attribution-NonCommercial-NoDerivatives licence (<http://creativecommons.org/licenses/by-nc-nd/4.0/>), which permits non-commercial re-use, distribution, and reproduction in any medium, provided that no alterations are made and the original article is properly cited. The written permission of Cambridge University Press must be obtained prior to any commercial use and/or adaptation of the article.

When the Delta variant started to spread in mid-June 2021, over 80% coverage of the first dose had been reached in those over 50 years old, as well as for the second dose in those over 80. Young adults had just started to receive their first doses [6]. At the time, Finland had one of the lowest cumulative incidences (< 2%) of COVID-19 cases (detected SARS-CoV-2 infections) among the European countries [1], confirmed by low levels of immunity from preceding SARS-CoV-2 infections in a population based serological study [7]. Moreover, NPIs in the country were at an internationally low level during the Delta era [8], thus diminishing the influence of NPIs on the assessments of effectiveness of vaccination.

In this work, we estimate the different components of the population level effectiveness of vaccination on the COVID-19 disease burden, using the Finnish population during the Delta variant era as our intervention population. A mathematical infectious disease model, calibrated with register data on the COVID-19 epidemic in Finland, is used to simulate an unvaccinated control population, identical to the intervention population except for vaccination. In particular, we compare the magnitudes between the direct and indirect components of effectiveness. Simultaneously, we achieve estimates of the averted disease burden in Finland.

Methods

The study period was from mid-June through December 2021, which corresponds to the era of the Delta variant in Finland. The starting point is set to the week the Delta variant was the most common observed variant for the first time in the country, to Monday 14 June 2021 [9]. The end is set to Sunday 5 December 2021, just before the rapid spread of the Omicron variant (B.1.1.529) began.

Data description

To monitor the COVID-19 epidemic, the Finnish Institute for Health and Welfare (THL) has collected COVID-19 data from several national healthcare registers and made publicly available aggregated data with variable age, time, and areal stratifications [10–13]. The registers are individual based, enabling linkage between them. In this study, the COVID-19 data, retrieved from the register databases on 28 September 2022, were used both for determining the realized disease burden and for model parameter estimation. The aggregated weekly-level data by 10 years age groups and vaccination status are made available (decision by THL COVID-19 research executive committee, 10 May 2023) in the [Supplementary Material](#).

Different COVID-19-related disease endpoints (registered COVID-19 cases, hospitalizations, intensive care admissions, and deaths) were retrieved from the national health registers and included in the analysis with the following definitions. Laboratory confirmed COVID-19 cases were retrieved from the National Infectious Diseases Register (NIDR) [14]. Hospitalizations from the Care Register for Health Care [15] were included if there existed a record of confirmed COVID-19 in the NIDR within a time window of $-14/+7$ days from the date of hospitalization, and a relevant primary or secondary ICD-10 diagnosis code (U07.1, U07.2, J00–22, J46, J80–84, J85.1, J86).

Laboratory-confirmed ICU COVID-19 admissions were retrieved from the Finnish Intensive Care Consortium's Database [16]. Multiple records for an individual within 30 days apart were

considered as one episode. Deaths from the Population Information System [17] with a COVID-19 case registered within 30 days were included.

All disease endpoints were stratified by the vaccination status (0/1/2+ doses), based on the individuals' recorded COVID-19 vaccination dates in the National Vaccination Register [6, 18]. To account for the time needed to obtain protection, the classification of vaccination status was delayed by 21 days for the first dose, and 7 days for the subsequent doses. The corresponding time- and age-specific coverages by dose were determined by combining the information from the National Vaccination Register and the Population Information System.

Model description

A mathematical model of SARS-CoV-2 transmission and development of COVID-19 disease was used to simulate an unvaccinated Control Population. First, the parameters of the model were estimated using the healthcare register data and the model with the realized vaccination programme. The model was then run from the start of 2020 with the estimated parameters but with vaccine efficacy parameters set to zero to produce a population that experienced the same epidemic and level of NPIs as the Finnish one, but without the vaccination programme. The model and the parameter estimation are briefly described next. A detailed description of the model is presented in the Supplementary Methods.

Model for transmission and development of disease

The transmission of SARS-CoV-2 infections within the population was modelled as a deterministic compartmental SEIR (Susceptible–Exposed–Infectious–Removed) model. The population was stratified into $9 \times 3 = 27$ subgroups by nine age groups and three vaccination statuses (0, 1, or 2+ received doses). The spread of infection within and between the age groups was modelled through a 9×9 contact matrix (Finnish matrix from POLYMOD study [19]), adjusted by age-specific factors (f_a) acting equally on susceptibility and infectiousness. The next-generation matrix (NGM) for the 27 subgroups was formed by 3×3 blocks of contact matrices between individuals with different vaccination statuses. In each block, both the susceptibility to SARS-CoV-2 and the infectiousness, risk of onwards transmission conditional on being infected, were reduced according to the age- and dose-specific vaccine efficacy (Table 1). In addition to the within-population transmission, the model included an option for external incidence

Table 1. Model parameters in the sensitivity analysis scenarios

Detection probability ^a	Baseline 0.75		Higher 0.9		Lower 0.5	
Vaccine efficacy ^b	Baseline		Higher		Lower	
Dose	1	2+	1	2+	1	2+
Against infection, overall	0.5	0.7	0.5	0.8	0.5	0.6
Against infectiousness,	0.5	0.5	0.5	0.6	0.5	0.625
conditional (overall)	(0.75)	(0.85)	(0.75)	(0.92)	(0.75)	(0.85)
Against severe disease,	0.5	0.5	0.5	0.7	0.5	0.625
conditional (overall)	(0.75)	(0.85)	(0.75)	(0.94)	(0.75)	(0.85)

^aProbability of COVID-19 case per SARS-CoV-2 infection.

^bVaccine efficacy parameters for ages 0–69. A reduction in efficacy against infection of 2+ doses was applied for ages 70–79 (25%), and 80+ (50%).

due to imported infections, which was used at the beginning of the epidemic in 2020 and at the arrival of the Delta variant when a peak in imported cases was observed [9]. The computational time step of the model was 1 day.

The model produced the incidence rates of disease endpoints (COVID-19 case, hospitalization, ICU admission, death) in each of the 27 subgroups by attaching endpoint-specific risks and delays to the SARS-CoV-2 incidence in the subgroup. The risks were assumed to depend on both age and vaccination status. Vaccine efficacy against the different disease endpoints was implemented with a hierarchical structure. For the vaccinated and infected individuals, the risk of severe disease endpoints (hospitalization, ICU admission, death) was reduced by the vaccine efficacy parameter against severe disease conditioned on infection.

Model parameters

The age-dependent risks for ICU admission per hospitalization and death per confirmed case were estimated using data from the beginning of 2021 to the end of the study period. Vaccine efficacy parameters (Table 1) were set so that the overall efficacy against severe disease was in agreement with the vaccine efficacy observed in COVID-19 vaccine studies [5, 20–23]. All vaccine efficacy parameters were taken to depend on age and the number of vaccine doses and vaccine efficacy was set to wane with time since vaccination to approximately 75% of initial efficacy after three months and 65% six months after vaccination [22, 24]. Sensitivity analyses with higher and lower vaccine efficacy against infection were performed (Table 1). In the higher vaccine efficacy scenario the efficacy against both infectiousness and severe disease were increased. A sensitivity analysis with 0% efficacy against infectiousness was also performed. The probability for an infection to become detected under intensive COVID-19 testing was set as 75% in the baseline scenario. The cumulative PCR-confirmed incidence and SARS-CoV-2 nucleoprotein seroprevalence (corresponding to immunity from infection but not vaccination) were not markedly different up until the end of the study period [7], suggesting a relatively high detection probability. To consider the uncertainty related to the parameter a sensitivity analysis was performed using higher (90%) and lower (50%) detection probabilities.

Given the earlier listed parameters, for each sensitivity analysis scenario, the posterior distribution of the following parameters was estimated from the number of cases and hospitalizations: the age-specific adjustment factors f_a , age-specific risk of hospitalization per infection, time-dependent reproduction number $R(t)$, and model hyper-parameters of the negative binomial likelihood. The number of cases and hospitalizations were assumed to be Poisson distributed and the Poisson rates were assumed to be Gamma distributed around the model incidence rates. Thus, the likelihood consisted of the corresponding negative binomial distributions at each time point, for each age, and vaccination status.

$R(t)$ is the expected number of people one infectious individual infects over their entire infectious period, assuming everyone they contact are susceptible. The effective reproduction number $R_{eff}(t)$ is $R(t)$ scaled by the probability that a contact is susceptible, that is, the actual expected number of secondary cases in the population in question. As such, $R(t)$ describes the combined effect of the variant properties and the overall level of contacts on transmission. In other words, both changes in behaviour and variant result in a change over time in the estimated $R(t)$, whereas an increase in levels of immunity in the population, either from infection or vaccine induced, results in divergence of $R_{eff}(t)$ from $R(t)$. In practice, $R(t)$ was represented as

a piece-wise constant function changing logistically between dates set to observed inflection points in case numbers.

The Bayesian estimation of the posterior distribution of the model parameters was performed using the weekly data on confirmed cases from an extended estimation period (1 July 2020–20 December 2021) and hospitalizations (15 April 2020–20 December 2021), both stratified by age and vaccination status. Using an uninformative prior distribution of the model parameters, the posterior distribution was sampled with an adaptive Metropolis algorithm [25]. See Supplementary Methods for the full list of parameters.

Vaccine effectiveness components

We defined the populations needed to assess the different effectiveness components as follows. The *Overall Population* was the Finnish population containing both vaccinated and unvaccinated individuals, that is, the intervention population. The *Vaccinated Population* was defined as those in the intervention population who had received at least one dose, and the *Unvaccinated Population* was defined as those with no doses received. The *Control Population* was the intervention population in a counterfactual scenario of no vaccination, simulated with the model and the estimated parameters.

The age structure in the Vaccinated and Unvaccinated Populations changed over the study period, as the vaccination coverage increased in all targeted ages, but at different rates. In these populations, the incidence rates (events per week per 100000 persons) were age standardized with the intervention population, that is, the entire Finnish population as the reference. Only the age-standardized rates are comparable to those in the Overall and Control Populations. The age-standardized incidence rate for the disease endpoint d in the population of those with vaccination status v ($v = 0, 1 +$) at time t was determined by formula:

$$I(d, v, t) = \left(\frac{n(d, v = 0, a = 0 - 9, t)}{N(v = 0, a = 0 - 9, t)} \frac{N(0 - 9)}{N} + \sum_{a \geq 10} \frac{n(d, v, a, t)}{N(v, a, t)} \frac{N(a)}{N} \right) \cdot 100000, \quad (1)$$

where $n(v, d, a, t)$ is the number of events d among individuals in age group a with vaccination status v at time t , $N(v, a, t)$ the size of the corresponding population, and $N(a)/N$ the fraction of age group a in the intervention population. The age group 0–9 years, not targeted by vaccination, were also included in the Vaccinated Population ($v = 1 +$) when defining the age-standardized incidence rates, thus making the corresponding effectiveness estimates conservative.

The vaccine effectiveness components compared the corresponding populations as presented in the Introduction. The vaccine effectiveness was defined as the relative reduction of the cumulative incidence over the study period (14 June–5 December 2021), based on the age-standardized weekly incidence rates.

Results

Data

Figure 1 presents the weekly numbers of COVID-19 cases, hospitalizations, ICU admissions, and deaths by vaccination status in the overall, that is, the Finnish population with vaccinated and unvaccinated individuals during the study period. The study period included two phases of increasing incidence for all endpoints.

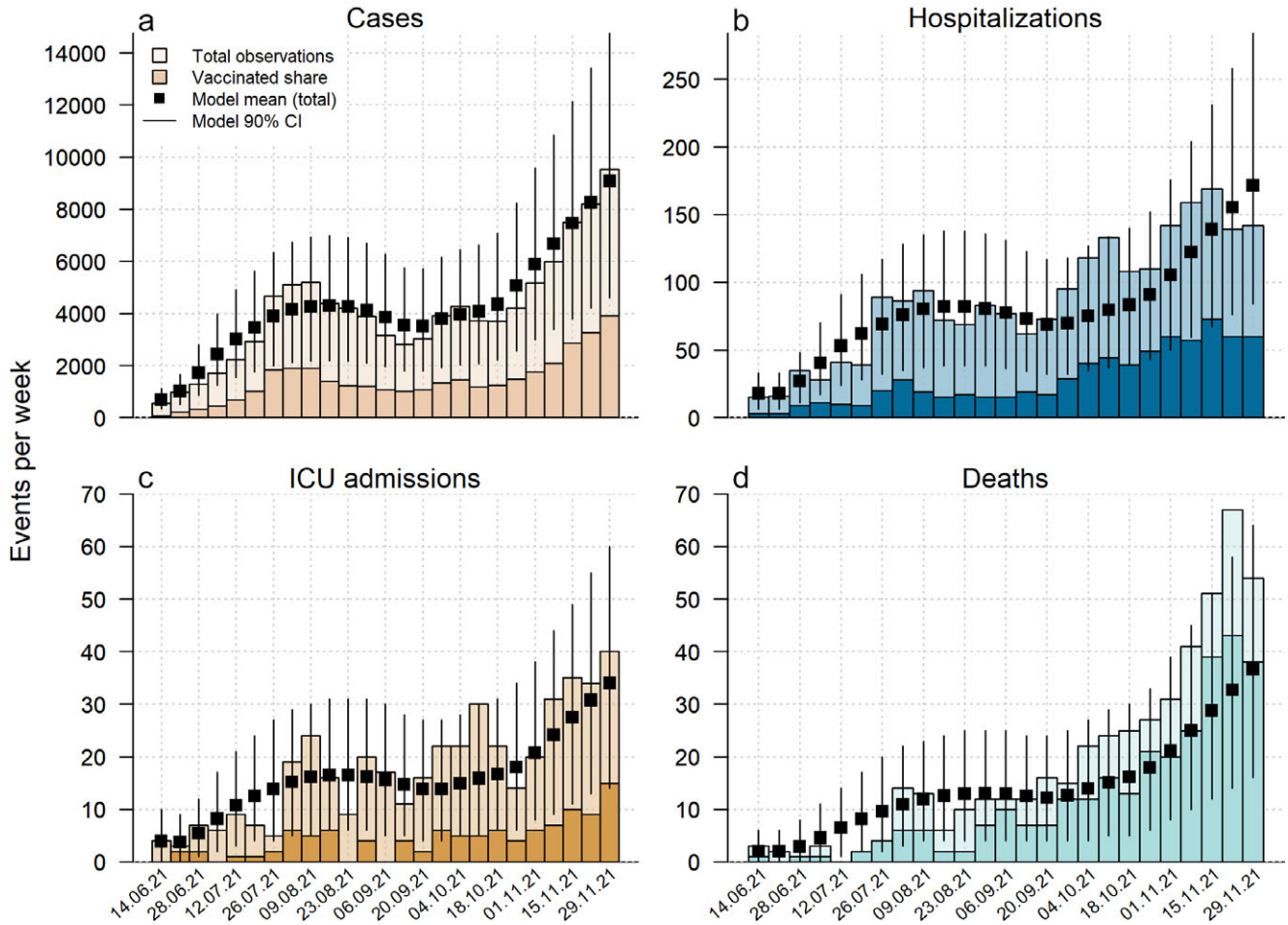


Figure 1. Weekly data from Finland (population approximately 5.6 million) during the Delta variant era. Darker coloured bars indicate the vaccinated (1+ doses) share of the total observations. (a) COVID-19 cases, (b) hospitalizations, (c) ICU admissions, (d) deaths. The figures include the posterior prediction means and 90% credible intervals of the calibrated model for the total number of events per week in the baseline scenario.

Following the high levels of vaccination coverage in most age groups (Figure 2a), the numbers of all four disease endpoints increased also among vaccinated individuals. The distribution of disease endpoints varied between ages, see Supplementary Figures S5–S8 for age- and dose-specific numbers. Younger ages had the highest numbers of COVID-19 cases, whereas severe disease endpoints occurred mostly in the older ages.

The calibrated model

Figure 1 shows the aggregated posterior predictions of the total number of events per week for all four endpoints in the Overall Population, corresponding to the model calibration on the age and vaccination status level. The posterior predictive distributions of the model corresponding to the Overall Population include both the posterior uncertainty of the parameter estimation, and the uncertainty from a model of the measurement process (Supplementary Methods, Section S3). The posterior predictions of the incidence rates in the 27 subgroups (nine groups by age, three by vaccination) are presented in Supplementary Figures S5–S8. All estimated parameter values are given in the Supplementary Methods. The model agreed well with the observed data in all scenarios (Supplementary Figures S1–S24), except for an underestimation of the total number of deaths to some extent towards the

end of the study period. In the age-specific and vaccination status-specific predictions, the underestimation of deaths was less pronounced, stemming mostly from those over 80 years of age. The sensitivity analysis with a higher vaccine efficacy produced a slightly better agreement with the observations than the two other efficacy scenarios for hospitalizations in the adult age groups with two or more vaccine doses.

Estimated $R(t)$

In the Overall Population, the model was calibrated to the observed data assuming the realized vaccination. The estimated time-dependent reproduction number $R(t)$ (Figure 2b, grey line) increased from below one at the start of the study period to almost two in the beginning of July 2021. The increase occurred simultaneously to the Delta variant displacing the previous, less transmissible variants in circulation. During the autumn, the reproduction number estimates increased to around three by December, reflecting the gradually increasing frequency of contacts in Finland. The corresponding effective reproduction number $R_{eff}(t)$ (Figure 2b, yellow line), remained initially close to $R(t)$, reflecting the low level of immunity in the population. In early July, $R_{eff}(t)$ started to decline after peaking at around 1.4, as the progressing vaccination programme led to an increased proportion of protected individuals

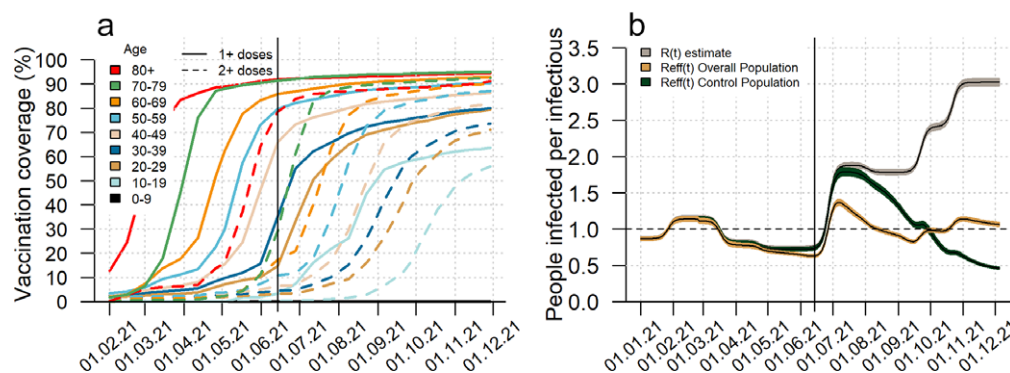


Figure 2. (a) The coverage of the first (solid line) and second (dashed line) COVID-19 vaccine doses by 10-year age groups in Finland in year 2021. (b) Estimated reproduction number $R(t)$ (grey) in Finland in year 2021, and the corresponding effective reproduction numbers $R_{eff}(t)$ in the partially vaccinated Overall Population (yellow) and completely unvaccinated Control Population (green). The two curves for $R_{eff}(t)$ were calculated with the calibrated model using the estimated $R(t)$ under differing assumptions on vaccination. The vertical line marks the beginning of the study period, that is, of the Delta variant era in Finland.

in the population. By early August, $R_{eff}(t)$ had declined to below one. Thereafter it remained close to one, even as $R(t)$ increased considerably, because the pool of susceptibles was steadily decreasing by vaccination.

In the Control Population, that is, when running the calibrated model with the vaccine efficacy parameters set to zero, the $R_{eff}(t)$ (Figure 2b, green line) had a markedly different trajectory. Increasing almost as much as the reproduction number $R(t)$ after the arrival of the Delta variant, $R_{eff}(t)$ in the Control Population did not decline to below one until the beginning of October. In this case, the estimated decline was solely due to immunity from infections as there was no vaccination.

COVID-19 incidence rates in the different populations

Figure 3 presents the age-standardized COVID-19 incidence rates for all four endpoints in the Overall, Vaccinated, Unvaccinated, and Control Populations, and Table 2 the cumulative incidences. For example, the cumulative incidence for hospitalizations was 39/100000 in the Overall Population, 16 in the Vaccinated Population (relative risk [RR] 0.4 vs. the Overall Population), 200 in the Unvaccinated Population (RR 5.1), and almost 4000 in the Control Population (RR 98.1). For ICU admissions and deaths, the cumulative incidences in the Overall Population were 7.9 and 8.3, compared to 860 (RR 108.9) and 1208 (RR 145.5) in the Control Population. In a population of 5.6 million the Control Population incidence rate for cases would correspond to 300000 new weekly cases before the epidemic starts to decline.

In all sensitivity analyses, the epidemic formed similar large waves in the Control Population, and the cumulative incidence was at least tens of times higher compared to the Overall Population. The cumulative incidence increased with the assumed detection rate of infections. For hospitalization, RR was 68/98/116 in the low/baseline/high detection rate scenario, respectively. In the sensitivity analyses for vaccine efficacy, the changes in RR were smaller, from RR 105 for hospitalization in the lower vaccine efficacy scenario to 114 in the higher efficacy scenario.

Vaccine effectiveness components

The estimates for the different components of effectiveness of vaccination, based on the cumulative incidences, are given in Table 3. The direct effectiveness (Vaccinated vs. Unvaccinated

Population) improved with severity of endpoint (72% against COVID-19 cases, 92% against hospitalization, 96% against ICU admission), except for death (87%), and the direct benefits (Overall vs. Unvaccinated Population) ranged from 54% against cases to 84% against ICU. The direct effectiveness values correspond to the observed vaccine efficacy in the entire Finnish population during the Delta era. The indirect effectiveness of vaccination (Unvaccinated Population vs. Control Population) was 93% against COVID-19 cases and 94–97% against severe endpoints. Together, the direct and indirect components combine to as high as 98% total effectiveness (Vaccinated Population vs. Control Population) against cases and more than 99.5% against severe endpoints. Also, the estimated overall effectiveness (Overall Population vs. Control Population) was exceedingly high, from 97% against cases to over 99% against all other endpoints. The sensitivity analyses or changing the efficacy against infectiousness to 0% (Supplementary Table S1) did not substantially change the results.

Averted disease burden in Finland

In Finland, with 5.6 million inhabitants, the realized disease burden was 102286 COVID-19 cases, 2194 hospitalizations, 442 ICU admissions, and 467 deaths registered during the study period. The estimated 97–99% overall effectiveness in the baseline Control Population scenario corresponds to 3.1 million COVID-19 cases, 209000 hospitalizations, 47000 ICU admissions, and 66000 deaths averted during the study period (Supplementary Table S2). These numbers include the burden averted both directly and indirectly, illustrated in Figure 4. For example, of all averted hospitalizations 96% were due to indirect effectiveness, and 4% due to direct benefits. The averted disease burden estimates do not include the potential additional detrimental effects of reaching the limits of healthcare capacity, as the risks of the different infection endpoints were estimated with data from a period without serious capacity issues.

Discussion

Our analysis based on the Finnish register data and infectious disease modelling shows the crucial role of indirect protection in the overall effectiveness of COVID-19 vaccination during the Delta era. The direct effectiveness of vaccination experienced by the vaccinated part of the intervention population was 72% against

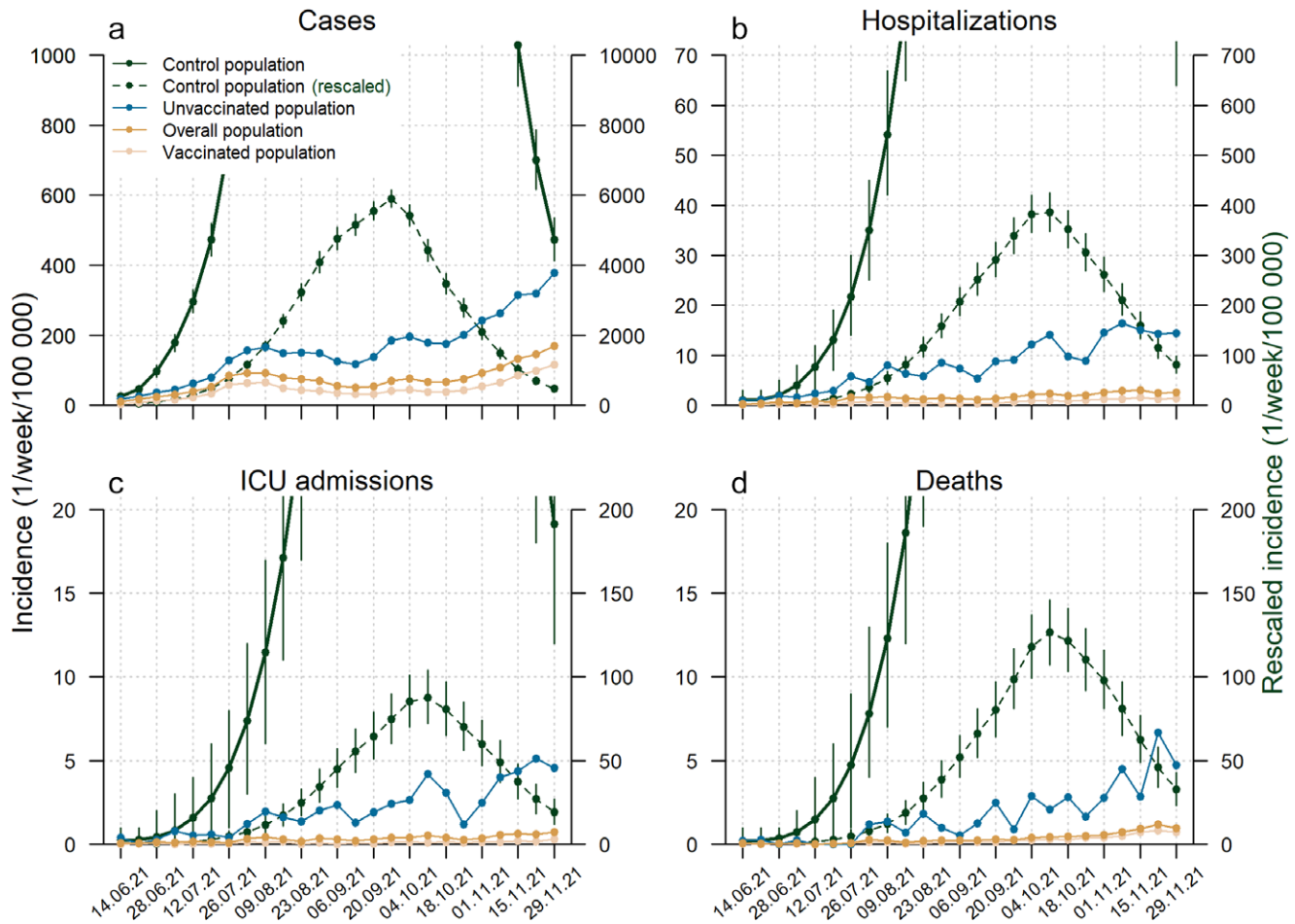


Figure 3. Realized age-standardized weekly incidence rates in the Overall (yellow), Vaccinated (beige), and Unvaccinated (blue) Populations and model-predicted weekly incidence rates with 90% credible intervals in the Control Population (green) for COVID-19 cases (a), hospitalizations (b), ICU admissions (c), and deaths (d). Solid lines are on the scale of the left y-axes, while the green dashed lines are on the scale of the right y-axes to illustrate the shape of the epidemic in the Control Population.

COVID-19 cases and 87–96% against severe disease, in line with previous estimates of vaccine efficacy in different parts of the Finnish population [5, 22]. In the vaccinated part of the population, the direct and indirect components of vaccine effectiveness combine to the total effectiveness of 98% against COVID-19 cases and over 99.5% for all severe disease endpoints. Note that an increase in the effectiveness from 0% to 90%, or from 90% to 99%, both reduce the incidence of an endpoint to one tenth from the original level. The indirect effectiveness alone, protecting also the unvaccinated part of the population, was as high as 93% against COVID-19 cases and 94–97% against severe disease. Consequently, in the intervention population, including both vaccinated and unvaccinated individuals, the overall effectiveness was 97% against COVID-19 cases and over 99% against severe disease.

Without vaccination under the low level of NPIs, the Delta variant would have reached roughly four fifths of the population in only a few months. Such high COVID-19 waves as in the simulated Control Population were not observed in any country during the Delta variant era. This kind of counterfactual model analysis is, however, the only way to evaluate the indirect effects in this context. Vaccination was ongoing in many countries, and countries with low vaccination coverage typically had extensive NPIs in place [1, 8]. Also, without vaccination the huge wave would likely have been lowered in Finland, as an increase in the incidence of infection and disease would have led to increasing the level of

NPIs in use. However, during the subsequent Omicron variant era, when the vaccine protection against infection had weakened, the number of cases increased worldwide, even if NPIs were still in place. In Finland, even if intensive testing was not anymore recommended at the time, 60000 weekly cases were registered mid-January 2022, and a level of weekly 50000 cases persisted up to mid-March 2022. Under intensive testing, these numbers would likely not have differed much from the peak of 300000 weekly cases in the simulated Control Population. During the Omicron era, however, the observed disease burden was much lower by the persisting strong vaccine protection against severe disease [26–28] and the lower severity of Omicron [29].

The estimated relative risk in the Control Population versus Overall Population increased with disease severity, which can be explained as follows. Older age groups had both higher coverage of vaccination and higher risk for severe disease compared to the younger age groups. Thus, removing vaccination resulted in stronger relative increase of infections in older age groups, and consequently, of severe disease overall. This effect is amplified by the large size of older age groups in the Overall Population.

The direct benefits and direct effectiveness of COVID-19 vaccination, and corresponding averted disease burden, have been studied in many countries under different levels of NPIs and variants [4, 30–35]. A study from Sweden using the same methodology as us to analyse also the indirect effects during the roughly the

Table 2. Cumulative incidences per 100000 over the study period in the different populations for all endpoints. The Vaccinated and Unvaccinated Population numbers were obtained from the age-standardized incidence rates. The rates for the Control Population are from the model in the baseline and sensitivity analysis scenarios, and include the 90% credible intervals of the posterior predictive distribution. The relative risks (RR, mean) are against the Overall Population

		Overall Population	Vaccinated Population	Unvaccinated Population	Control Population sensitivity analysis scenario ^a				
					Control Population ^b	Baseline VE, lower detection	Baseline VE, higher detection	Lower VE, baseline detection	Higher VE, baseline detection
COVID-19 cases	Cum. inc/100 k	1823	1136	3997	57682 (56166–59207)	37555 (36556–38560)	69797 (67988–71616)	57926 (56395–59465)	59513 (57973–61063)
	Relative risk (RR)	1	0.62	2.19	31.64	20.60	38.29	31.78	32.65
Hospitalizations	Cum. inc/100 k	39.1	15.8	200	3834 (3643–4029)	2653 (2510–2799)	4527 (4301–4757)	4088 (3884–4296)	4461 (4235–4690)
	RR	1	0.40	5.12	98.06	67.85	115.8	104.6	114.1
ICU admissions	Cum.inc/100 k	7.9	2.2	50.7	860 (799–923)	594 (546–643)	1013 (943–1084)	909 (846–974)	999 (929–1070)
	RR	1	0.28	6.42	108.9	75.19	128.2	115.1	126.5
Deaths	Cum.inc/100 k	8.3	5.6	42.8	1208 (1137–1280)	787 (734–841)	1455 (1377–1535)	1221 (1150–1294)	1279 (1208–1352)
	RR	1	0.67	5.16	145.5	94.82	175.3	147.1	154.1

^aSensitivity analysis scenarios: Lower detection probability 0.5, higher detection 0.9. Lower VE: 0.6 against infection, 0.85 against infectiousness, 0.85 against severe disease. Higher VE: 0.8 against infection, 0.94 against infectiousness, 0.92 against severe disease.

^bBaseline scenario: 0.75 detection probability, vaccine efficacy of 2+ doses (VE) 0.7 against infection, 0.85 against infectiousness, 0.85 against severe disease.

Table 3. The vaccine effectiveness components, that is, the relative reduction of the cumulative incidences over the study period in the different populations. The components calculated from the Control Population incidences include the 90% credible intervals of the posterior predictive distribution from the model

Control Population sensitivity analysis scenario ^a		COVID-19 cases	Hospitalizations	ICU admissions	Deaths
Direct benefits (%) Overall vs. Unvaccinated Population	–	54.4	80.4	84.4	80.6
Direct effectiveness (%) Vaccinated vs. Unvaccinated Population	–	71.6	92.1	95.7	86.9
Indirect effectiveness (%) Unvaccinated vs. Control Population	Baseline	93.1 (92.9–93.2)	94.8 (94.5–95.0)	94.1 (93.7–94.5)	96.5 (96.2–96.7)
	Baseline VE, lower detection	89.4 (89.1–89.6)	92.5 (92.0–92.9)	91.5 (90.7–92.1)	94.6 (94.2–94.9)
	Baseline VE, higher detection	94.3 (94.1–94.4)	95.6 (95.3–95.8)	95.0 (94.6–95.3)	97.1 (96.9–97.2)
	Lower VE, baseline detection	93.1 (92.9–93.3)	95.1 (94.9–95.3)	94.4 (94.0–94.8)	96.5 (96.3–96.7)
	Higher VE, baseline detection	93.3 (93.1–93.5)	95.5 (95.3–95.7)	94.9 (94.5–95.3)	96.7 (96.5–96.8)
Overall effectiveness (%) Overall vs. Control Population	Baseline	96.8 (96.8–96.9)	99.0 (98.9–99.0)	99.1 (99.0–99.1)	99.3 (99.3–99.4)
	Baseline VE, lower detection	95.1 (95.0–95.3)	98.5 (98.4–98.6)	98.7 (98.6–98.8)	98.9 (98.9–99.0)
	Baseline VE, higher detection	97.4 (97.3–97.5)	99.1 (99.1–99.2)	99.2 (99.2–99.3)	99.4 (99.4–99.5)
	Lower VE, baseline detection	96.9 (96.8–96.9)	99.0 (99.0–99.1)	99.1 (99.1–99.2)	99.4 (99.3–99.4)
	Higher VE, baseline detection	96.9 (96.9–97.0)	99.1 (99.1–99.2)	99.2 (99.1–99.3)	99.4 (99.3–99.4)
Total effectiveness (%) Vaccinated vs. Control Population	Baseline	98.0 (98.0–98.1)	99.6 (99.6–99.6)	99.7 (99.7–99.8)	99.5 (99.5–99.6)
	Baseline VE, lower detection	97.0 (96.9–97.1)	99.4 (99.4–99.4)	99.6 (99.6–99.7)	99.3 (99.2–99.3)
	Baseline VE, higher detection	98.4 (98.3–98.4)	99.7 (99.6–99.7)	99.8 (99.8–99.8)	99.6 (99.6–99.6)
	Lower VE, baseline detection	98.0 (98.0–98.1)	99.6 (99.6–99.6)	99.8 (99.7–99.8)	99.5 (99.5–99.6)
	Higher VE, baseline detection	98.1 (98.0–98.1)	99.6 (99.6–99.7)	99.8 (99.8–99.8)	99.6 (99.5–99.6)

^aBaseline scenario: 0.75 detection probability, vaccine efficacy of 2+ doses (VE) 0.7 against infection, 0.85 against infectiousness, 0.85 against severe disease. Sensitivity analysis scenarios: Lower detection probability 0.5, higher detection 0.9. Lower VE: 0.6 against infection, 0.85 against infectiousness, 0.85 against severe disease. Higher VE: 0.8 against infection, 0.94 against infectiousness, 0.92 against severe disease.

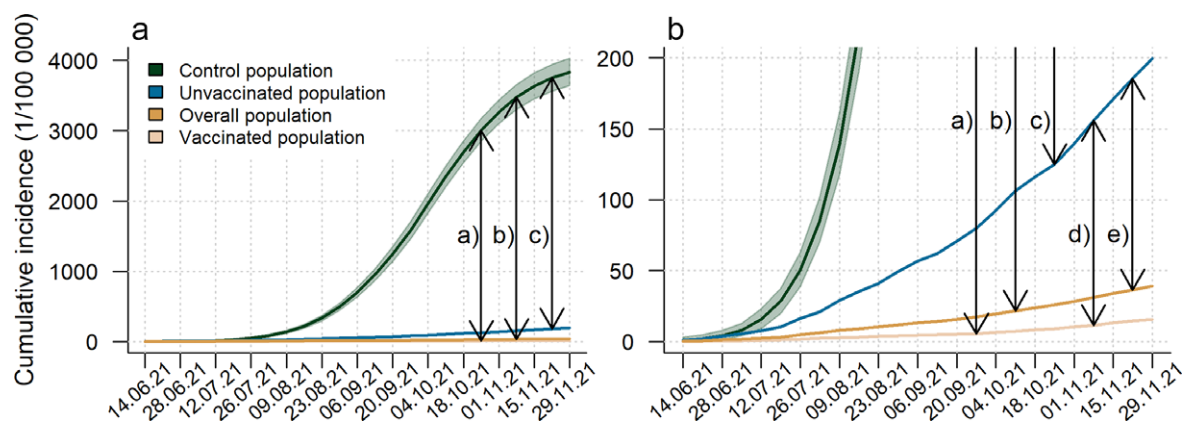


Figure 4. The different components of vaccine effectiveness illustrated with the cumulative age-standardized incidence of hospitalizations during the study period, on two different scales (a and b) for the Overall (yellow), Vaccinated (beige), Unvaccinated (blue), and Control (green, with 90% credible intervals of model prediction) Populations. Arrows correspond to (a) Total effectiveness, (b) Overall effectiveness, (c) Indirect effectiveness, (d) Direct effectiveness, (e) Direct benefits. Total effectiveness (a) comprises of indirect effectiveness (c) and direct effectiveness (d). Overall effectiveness (b) comprises of indirect effectiveness (c) and direct benefits (e).

same time period had notably similar results [36]. In Japan, total effectiveness of vaccination during the Delta era was estimated to 92.6% for infections and 97.2% for deaths, with indirect effectiveness accounting for 89.0% and 92.1% of reduction in disease burden [37]. Indirect effects of vaccination have also been estimated applying other methods [38–40]. The estimates of the different components of vaccine effectiveness are in general not comparable from

country to country as, for example, age structure, vaccine roll-out, and NPI levels vary. Even so, in all studies the key observations are consistent – direct effects of COVID-19 vaccination have been good, the corresponding averted disease burden was large, and indirect effects were substantial against the Delta variant, leading to an even larger averted disease burden. These analyses also reveal the immense potential of the Delta variant to spread and cause

disease burden, which was hidden by vaccination in many countries, consistent with the estimates of transmissibility compared to preceding variants [40].

A strength of this study was the use of comprehensive age- and vaccination status-specific health register data from the entire Finnish population. Even so, uncertainty remains whether the severe disease extracted from the registers with the chosen definitions were due to or with COVID-19. However, during the Delta era COVID-19 cases were still relatively rare in Finland, so that the fraction of with COVID-19 was low compared to the subsequent Omicron era, as observed later [41]. The inherently unknown proportion of detected infections was a limitation. In addition, our choice of vaccine efficacy parameter values is based on several studies, but especially efficacy against infectiousness after infection is highly uncertain. To account for these unknowns, we ran sensitivity analyses varying the detection probability and the parameters for vaccine efficacy. Indeed, the higher vaccine efficacy scenario corresponded better to the observations for adult hospitalizations than the baseline scenario, indicating that the baseline efficacy parameters were perhaps too conservative. Still, all scenarios produced notably similar results.

The choice of the model structure is a potential source of bias. For example, the model overshot COVID-19 cases in fully vaccinated young adults and underestimated deaths in the 80+ age group in the last weeks of the study period, compared to observations in the calibration phase. The overestimation of cases may stem from using the same detection probability for all ages. To compensate, we estimated an age-specific adjustment factor for the contact matrix, adjusting for age-specific susceptibility, infectiousness, and infection detection, as well as the contacts themselves. The discrepancy between the model and the observations was in fact expected, as test seeking behaviour after vaccination likely fell during the study period. The bias did not play a role in the simulation of the Control Population, as everyone was unvaccinated. The underestimation of age-dependent risks for death per confirmed case was likely caused by being estimated with data from a period when the most vulnerable groups were especially well isolated. This might have led to an underestimation of averted deaths in Finland. As it is never possible to identify all influencing factors from the available data, the choice of model structure must strike a balance between rigidity and overfitting to data.

The realized disease burden in Finland during the Delta era, with an estimated SARS-CoV-2 seroprevalence of only 6% (2–22%) at the end of 2021 [7], was remarkably low compared to the potential burden illustrated in the simulated Control Population, reflecting close to optimal timing of vaccination. In addition to disease burden, the need for additional NPIs was averted by vaccination. When the Delta variant started to spread, younger age groups with high transmission potential were rapidly being vaccinated with their first dose, already providing good protection against infection. By then the oldest age groups had also obtained a good second dose coverage. Finally, the rapid displacement of Delta by Omicron happened in Finland before any possible waning of vaccine efficacy against Delta infections was observed.

In conclusion, the indirect effectiveness was an essential factor in the excellent overall and total effectiveness against the Delta variant of SARS-CoV-2, providing extraordinary protection also to the unvaccinated. The population level impact of vaccination shown here is substantially larger than in analyses of direct efficacy and effectiveness alone. When strong indirect effects exist, looking only at the data about the realized disease burden does not reveal the whole

story. Quantifying the full impact of vaccination requires also analysing the mechanisms that result in the observed disease burden.

Supplementary material. The supplementary material for this article can be found at <http://doi.org/10.1017/S0950268825000354>.

Data availability statement. The data are available in the Supplementary Material. Model codes are available upon reasonable request from the corresponding author.

Acknowledgements. The authors want to acknowledge the THL data management team, especially Toni Lehtonen and Oskari Luomala.

Author contribution. Conceptualization: S.V., M.S., T.L., K.A., A.S.; Formal analysis: S.V., A.S.; Methodology: S.V., M.S., K.A., A.S.; Software: S.V., M.S., A.S.; Supervision: S.V., T.L.; Visualization: S.V., M.S., A.S.; Writing – original draft: S.V., A.S.; Writing – review & editing: S.V., M.S., T.L., K.A., A.S.; Investigation: T.L.

Funding statement. The Finnish Institute for Health and Welfare has received research funding from several pharmaceutical vaccine manufacturing companies until March 2022.

Competing interests. The authors declare no competing interests exist.

References

- [1] Mathieu E, et al. (2020) Coronavirus pandemic (COVID-19). *Our World in Data*. <https://ourworldindata.org/coronavirus>.
- [2] Wilder-Smith A, et al. (2017) The public health value of vaccines beyond efficacy: methods, measures and outcomes. *BMC Medicine*, **15**, 1–9.
- [3] Halloran ME, et al. (1991) Direct and indirect effects in vaccine efficacy and effectiveness. *American Journal of Epidemiology*, **133**, 323–331.
- [4] Kayano T, et al. (2022) Number of averted COVID-19 cases and deaths attributable to reduced risk in vaccinated individuals in Japan. *The Lancet Regional Health-Western Pacific*, **28**, 100571.
- [5] Baum U, et al. (2021) Effectiveness of vaccination against SARS-CoV-2 infection and Covid-19 hospitalisation among Finnish elderly and chronically ill – An interim analysis of a nationwide cohort study. *PLoS One*, **16**: e0258704.
- [6] Finnish Institute of Health and Welfare. National vaccination register. <https://thl.fi/en/web/infectious-diseases-and-vaccinations/surveillance-and-registers/finnish-national-vaccination-register-and-monitoring-of-the-vaccination-programme>.
- [7] Solastie A, et al. (2023) Changes in SARS-CoV-2 seroprevalence and population immunity in Finland, 2020–2022. *Emerging Microbes & Infections*, **12**, 2222849.
- [8] European Centre for Disease Prevention and Control. Impact of selected non-pharmaceutical interventions on EU adults' work-life balance during the COVID-19 pandemic, 2020–2022. https://www.ecdc.europa.eu/sites/default/files/documents/Impact_of_selected_NPIs_on_EU_adult_work-life_balance_during_COVID-19_pandemic.pdf.
- [9] Finnish Institute of Health and Welfare (2022). COVID-19-epidemia hybridistrategian seuranta – tilannearvioraportti 1.6.2022. <https://thl.fi/aiheet/infektiaudit-jarokotukset/ajankohtaista/ajankohtaista-korona-viruksesta-covid-19/tilannekatsaus-koronaviruksesta/koronaviruksen-seuranta>.
- [10] Finnish Institute of Health and Welfare. COVID epidemic reports. <https://sampo.thl.fi/pivot/prod/en/epirapo>.
- [11] Finnish Institute of Health and Welfare. COVID epidemic reports: effectiveness of coronavirus vaccinations in Finland, number of infections requiring hospitalisation. https://sampo.thl.fi/pivot/prod/en/epirapo/covid19inci/fact_epirapo_covid19inci.
- [12] Finnish Institute of Health and Welfare. Coronavirus cases, hospital treatment situation and deaths. <https://www.thl.fi/episeuranta/tautita-paukset/coronamap.html>.

- [13] **Finnish Institute of Health and Welfare (2020–2022)** COVID modelling webinar material. <https://thl.fi/fi/web/infektiaudit-ja-rokotukset/ajan-kohtaista/ajankohtaista-koronaviruksesta-covid-19/tilannekatsaus-koronaviruksesta/koronavirusepidemia-mallinnusta>.
- [14] **Finnish Institute of Health and Welfare.** National infectious diseases register. <https://thl.fi/en/web/infectious-diseases-and-vaccinations/surveillance-and-registers/finnish-national-infectious-diseases-register>.
- [15] **Finnish Institute of Health and Welfare.** Care register for health care. <https://thl.fi/en/web/thlfi-en/statistics-and-data/data-and-services/register-descriptions/care-register-for-health-care>.
- [16] **Reinikainen M,** et al. (2012) Association of automated data collection and data completeness with outcomes of intensive care: a new customised model for outcome prediction. *Acta Anaesthesiologica Scandinavica*, **56**, 1114–1122.
- [17] **Digital and Population Data Services Agency.** Finnish population information system. <https://dvv.fi/en/population-information-system>.
- [18] **Finnish Institute of Health and Welfare.** COVID epidemic reports: effectiveness of coronavirus vaccinations in Finland, vaccine protection by age. https://sampo.thl.fi/pivot/prod/en/epirapo/covid19inci/fact_epirao_covid19inci?row=642743L&column=inciagegroup-639348&filter=measure-650912&column=incivacstatus-639350#.
- [19] **Mossong J,** et al. (2008) Social contacts and mixing patterns relevant to the spread of infectious diseases. *PLoS Medicine*, **5**:e74.
- [20] **Lopez Bernal J,** et al. (2021) Effectiveness of Covid-19 vaccines against the B. 1.617. 2 (delta) variant. *New England Journal of Medicine*, **385**, 585–594.
- [21] **Andrews N,** et al. (2022) Duration of protection against mild and severe disease by COVID-19 vaccines. *New England Journal of Medicine*, **386**, 340–350.
- [22] **Baum U,** et al. (2022) High vaccine effectiveness against severe COVID-19 in the elderly in Finland before and after the emergence of omicron. *BMC Infectious Diseases*, **22**, 816.
- [23] **Hall VJ,** et al. (2021) COVID-19 vaccine coverage in health-care workers in England and effectiveness of BNT162b2 mRNA vaccine against infection (SIREN): a prospective, multicentre, cohort study. *The Lancet*, **397**, 1725–1735.
- [24] **Poukka E,** et al. (2022) Cohort study of Covid-19 vaccine effectiveness among healthcare workers in Finland, December 2020–October 2021. *Vaccine*, **40**, 701–705.
- [25] **Haario H, Saksman E, Tamminen J** (2001) An adaptive metropolis algorithm. *Bernoulli*, **7**, 223–242.
- [26] **Andrews N,** et al. (2022) Covid-19 vaccine effectiveness against the omicron (B. 1.1. 529) variant. *New England Journal of Medicine*, **386**, 1532–1546.
- [27] **Rufino J,** et al. (2023) Using survey data to estimate the impact of the omicron variant on vaccine efficacy against COVID-19 infection. *Scientific Reports*, **13**, 900.
- [28] **Lau JJ,** et al. (2023) Real-world COVID-19 vaccine effectiveness against the omicron BA. 2 variant in a SARS-CoV-2 infection-naïve population. *Nature Medicine*, **29**, 348–357.
- [29] **Lewnard JA,** et al. (2022) Clinical outcomes associated with SARS-CoV-2 omicron (B. 1.1. 529) variant and BA. 1/BA. 1.1 or BA. 2 subvariant infection in Southern California. *Nature Medicine*, **28**, 1933–1943.
- [30] **Meslé MM,** et al. (2021) Estimated number of deaths directly averted in people 60 years and older as a result of COVID-19 vaccination in the WHO European Region, December 2020 to November 2021. *Eurosurveillance*, **26**, 2101021.
- [31] **Public Health England and University of Warwick** (2021). Impact of COVID-19 vaccines on mortality in England: December 2020 to February 2021. https://assets.publishing.service.gov.uk/media/605b259de90e0724c14950bb/COVID-19_vaccine_impact_on_mortality_240321.pdf.
- [32] **Ferreira LS,** et al. (2023) Estimating the impact of implementation and timing of the COVID-19 vaccination programme in Brazil: a counterfactual analysis. *The Lancet Regional Health–Americas*, **17**, 100397.
- [33] **Haas EJ,** et al. (2021) Impact and effectiveness of mRNA BNT162b2 vaccine against SARS-CoV-2 infections and COVID-19 cases, hospitalisations, and deaths following a nationwide vaccination campaign in Israel: an observational study using national surveillance data. *The Lancet*, **397**, 1819–1829.
- [34] **Gram MA,** et al. (2022) Vaccine effectiveness against SARS-CoV-2 infection or COVID-19 hospitalization with the alpha, delta, or omicron SARS-CoV-2 variant: a nationwide danish cohort study. *PLoS Medicine*, **19**, e1003992.
- [35] **Nordström P, Ballin M, Nordström A** (2022) Risk of infection, hospitalisation, and death up to 9 months after a second dose of COVID-19 vaccine: a retrospective, total population cohort study in Sweden. *The Lancet*, **399**, 814–823.
- [36] **Bergström, F, Gunther, F, Britton, T** (2024) A counterfactual analysis quantifying the COVID-19 vaccination impact in Sweden. *medRxiv* 2024–08.
- [37] **Kayano T,** et al. (2023) Evaluating the COVID-19 vaccination program in Japan, 2021 using the counterfactual reproduction number. *Scientific Reports*, **13**, 17762.
- [38] **Watson OJ,** et al. (2022) Global impact of the first year of COVID-19 vaccination: a mathematical modelling study. *The Lancet Infectious Diseases*, **22**, 1293–1302.
- [39] **Shoukat A,** et al. (2022) Lives saved and hospitalizations averted by COVID-19 vaccination in New York City: a modeling study. *The Lancet Regional Health–Americas*, **5**, 100085.
- [40] **Panovska-Griffiths J,** et al. (2022) Statistical and agent-based modelling of the transmissibility of different SARS-CoV-2 variants in England and impact of different interventions. *Philosophical Transactions of the Royal Society A*, **380**, 20210315.
- [41] **Finnish Institute of Health and Welfare** Inpatient care of acute respiratory tract infections in Finland. https://sampo.thl.fi/pivot/prod/en/epirapo/respinfcare/fact_epirapo_respinfcare?row=yearmonthweek-769527&column=respinfcareuserole-817278.817289#.