

OPEN

# Author Correction: Earth tectonics as seen by GOCE - Enhanced satellite gravity gradient imaging

Jörg Ebbing<sup>1</sup>, Peter Haas<sup>1</sup>, Fausto Ferraccioli<sup>2</sup>, Folker Pappa<sup>1</sup>, Wolfgang Szwillus<sup>1</sup> & Johannes Bouman<sup>3</sup>

Correction to: *Scientific Reports* <https://doi.org/10.1038/s41598-018-34733-9>, published online 05 November 2018

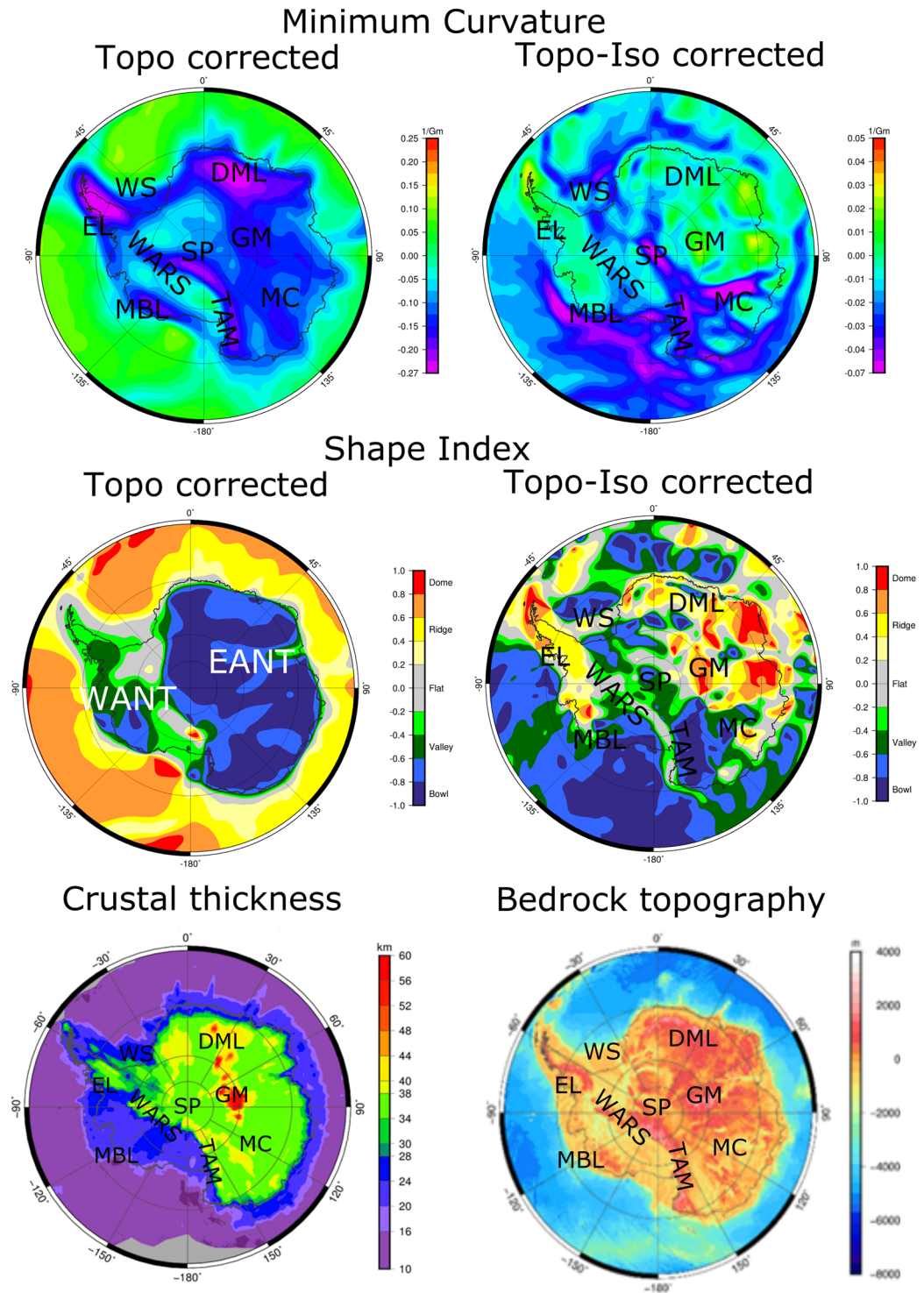
This Article contains errors in Figure 3.

The top two images in the first column that show the minimum curvature and shape index after topographic correction, and the top two images in the second column that show the same fields after additional isostatic correction, have all been incompletely plotted.

The complete correct Figure 3 appears below as Figure 1.

<sup>1</sup>Institut für Geowissenschaften, Kiel University, Kiel, Germany. <sup>2</sup>British Antarctic Survey, Cambridge, UK.

<sup>3</sup>Bundesamt für Kartographie und Geodäsie (BKG), Frankfurt am Main, Germany. Correspondence and requests for materials should be addressed to J.E. (email: [joerg.ebbing@ifg.uni-kiel.de](mailto:joerg.ebbing@ifg.uni-kiel.de))



**Figure 1.** Comparison of GOCE products with Moho depth and bedrock topography for Antarctica. Left column: Minimum curvature and shape index after topographic correction. Right column: the same fields after additional isostatic correction. In the bottom: Moho depth<sup>34</sup> and bedrock topography<sup>48</sup>. EANT = East Antarctica, WANT = West Antarctica, DML = Dronning Maud Land, EL = Ellsworth Land, GM = Gamburtsev Subglacial Mountains, MBL = Marie Byrd Land, MC = Mawson Craton, WS = Weddell Sea, SP = South Pole, WARS = West Antarctic Rift System, TAM = Transantarctic Mountains.



**Open Access** This article is licensed under a Creative Commons Attribution 4.0 International License, which permits use, sharing, adaptation, distribution and reproduction in any medium or format, as long as you give appropriate credit to the original author(s) and the source, provide a link to the Creative Commons license, and indicate if changes were made. The images or other third party material in this article are included in the article's Creative Commons license, unless indicated otherwise in a credit line to the material. If material is not included in the article's Creative Commons license and your intended use is not permitted by statutory regulation or exceeds the permitted use, you will need to obtain permission directly from the copyright holder. To view a copy of this license, visit <http://creativecommons.org/licenses/by/4.0/>.

© The Author(s) 2019