

thorough analysis is necessary.

On the other hand, the proportion of news cases with GPD II at diagnosis showed an increasing trend (AAPC 2%,  $p < 0.01$ ). This finding reinforces the existence of a late diagnosis and little effectiveness of the activities of timely case detection, supporting the hypothesis of a high hidden prevalence.<sup>2,5</sup>

Regarding the proportion of GPD among newly-diagnosed cases, there was an increasing trend between 2001-2015. When considering the whole period, the pattern observed was stationary (AAPC 0.3%,  $p = 0.3$ ). The variation in the proportion of GPD evaluated at the time of discharge is highlighted. In this indicator, three significant trends were observed: the first of decrease, between 2001 and 2007 (AP -1.5%,  $p < 0.01$ ), the second of increase, between 2007 and 2010 (APC 8.6,  $p < 0.01$ ) and the third of decrease, between 2010 and 2015 (APC -1.4,  $p < 0.01$ ). When considering the whole period, the pattern observed was stationary.

These two indicators are capable of monitoring the quality of health services in patient care.<sup>4</sup> Despite the improvement observed, we believe the services still have a long way to go to be able to offer an adequate care to patients, both for diagnosis and prevention of disabilities. It is important to highlight the differences between the percentages of evaluation at diagnosis, which was considered average for the period (between 75% and 90%) and at cure, considered poor (lower than 75%).


Finally, we highlight the need to implement actions that allow for improvement in health services provide an early diagnosis, timely treatment and appropriate follow-up of patients, and, therefore, achieve a sustainable and real reduction of the burden of Hansen's disease in Brazil. □

#### REFERENCES

1. Apps.who.int [Internet]. Organização Mundial da Saúde (OMS). Estratégia global para hanseníase 2016-2020: Aceleração rumo a um mundo sem hanseníase. [cited 2017 Dez 15]. Disponível em: <http://apps.who.int/iris/bitstream/handle/10665/208824/9789290225201-pt.pdf?sequence=17&isAllowed=y>.
2. Portal.arquivos.saude.gov.br [Internet]. Brasil. Ministério da Saúde. Secretaria de Vigilância em Saúde. Indicadores epidemiológicos e operacionais de hanseníase. Brasil, 2001-2016 [updated 2017 Jun 09; cited 2018 Feb 21]. Available from: <http://portal.arquivos.saude.gov.br/images/pdf/2017/julho/10/Indicadores-epidemiol-gicos-e-operacionais-de-hansen-ase.%20Brasil,%202001-.pdf>.
3. Van Brakel WH, Sihombing B, Djarir H, Beise K, Kusumawardhani L, Yulihane R, et al. Disability in people affected by leprosy: the role of impairment, activity, social participation, stigma and discrimination. *Glob Health Action*. 2012;5:18394.
4. Portal.saude.pe.gov.br [Internet]. Brasil. Ministério da Saúde. Secretaria de Vigilância em Saúde. Departamento de Vigilância das Doenças Transmissíveis. Diretrizes para vigilância, atenção e eliminação da Hanseníase como problema de saúde pública: manual técnico-operacional [cited 2017 Dez 15]. Available from: [http://portal.saude.pe.gov.br/sites/portal.saude.pe.gov.br/files/diretrizes\\_para\\_eliminaao\\_hanseniase\\_-\\_manual\\_-\\_3fev16\\_isbn\\_nucom\\_final\\_2.pdf](http://portal.saude.pe.gov.br/sites/portal.saude.pe.gov.br/files/diretrizes_para_eliminaao_hanseniase_-_manual_-_3fev16_isbn_nucom_final_2.pdf).
5. Sales AM, Campos DP, Hacker MA, Costa Nery JA, Düppre NC, Rangel E, et al. Progression of leprosy disability after discharge: is multidrug therapy enough? *Trop Med Int Health*. 2013;18:1145-53.

#### AUTHORS' CONTRIBUTIONS

Carlos Dornels Freire de Souza

 ORCID 0000-0003-0837-8254

Statistical analysis; Approval of the final version of the manuscript; Conception and planning of the study; Elaboration and writing of the manuscript; Obtaining, analyzing and interpreting the data; Effective participation in research orientation; Intellectual participation in propaedeutic and/or therapeutic conduct of the cases studied; Critical review of the literature; Critical review of the manuscript

**How to cite this article:** Souza CDF. Physical disability and Hansen's disease in Brazil in the 21st century: Brief analysis. *An Bras Dermatol*. 2019;94(1):107-8.

## Patterns of proliferation and apoptosis in different subtypes of basal cell carcinoma, adjacent epidermis, and recurrent forms\*

Jacqueline Silva Brito Lima<sup>1</sup>  
Anna Carolina Miola<sup>2</sup>  
Mariângela Esther Alencar Marques<sup>3</sup>  
Hélio Amante Miot<sup>4</sup>

DOI: <http://dx.doi.org/10.1590/abd1806-4841.20198165>

Dear Editor,

Basal cell carcinomas (BCC) present different subtypes that exhibit diverse prognostic behavior. The main histological subtypes are nodular (including cystic and pigmented), sclerodermiform, superficial, and rare variants: micronodular and fibroepithelioma of Pinkus.<sup>1</sup>

The evolutionary differences of the different types of BCC are not well defined, nor are the processes that determine their histological differentiation. The three most representative subtypes are nodular, sclerodermiform (infiltrative), and superficial. Although more than 40% of the lesions present mixed components, different characteristics, invasiveness, and recurrences related to the subtypes are observed, suggesting different biological behaviors.<sup>1,2</sup>

The rate of cell proliferation is associated with the growth and invasiveness of various malignancies. However, the ability to promote apoptosis represents a form of primary cellular resistance to genomic and metabolic alterations linked to malignant neoplastic

Received 06 February 2018.

Accepted 18 May 2018.

\* Work conducted at the Department of Dermatology, Faculdade de Medicina, Campus Universitário de Rubião Jr., Universidade Estadual Paulista, Botucatu (SP), Brazil.

Financial Support: FUNADERSP - 2016.

Conflict of interest: None.

<sup>1</sup> Anatomy Course, Department of Morphology, Universidade Federal de Alagoas, Maceió (AL), Brazil.

<sup>2</sup> Program of Pathophysiology in Clinical Medicine, Faculdade de Medicina, Universidade Estadual Paulista, Botucatu (SP), Brazil.

<sup>3</sup> Pathology Course, Department of Pathology, Faculdade de Medicina, Universidade Estadual Paulista, Botucatu (SP), Brazil.

<sup>4</sup> Dermatology Course, Department of Dermatology and Radiotherapy, Faculdade de Medicina, Universidade Estadual Paulista, Botucatu (SP), Brazil.

MAILING ADDRESS:

Hélio Amante Miot

E-mail: [heliomiot@fmb.unesp.br](mailto:heliomiot@fmb.unesp.br)

initiation, promotion, and proliferation.<sup>3</sup> Thus, different expression profiles of proteins linked to proliferation and apoptosis, such as p53, ki67, survivin, and NFκB pathway (p105), may characterize the clinical subtypes of BCC and the pattern of recurrent cases relative to the adjacent normal epithelium.

This study aimed to evaluate the expression of cell proliferation and apoptosis markers in the nodular, superficial, and infiltrative (sclerodermiform) types of BCC and recurrent tumors.

We conducted a cross-sectional study involving BCC smaller than 2cm operated between 2012 and 2013 in the HC-Unesp (Botucatu-SP, Brazil), divided into: nodular only (n=18), superficial (n=6), infiltrative (n=6), and surgical recurrences, with three subtypes: superficial (n=7), nodular (n=11), and infiltrative (n=4). The research project was approved by the local research ethics committee.

The specimens' histological slides were submitted to immunohistochemical (DAB) labeling for ki67, p53, survivin, and p105 according to manufacturers' protocols. Micrographs of three hotspot areas of the tumor blocks and adjacent epithelium were sampled to calculate the percentage of immunolabelled cells or relative intensity of p105 cytoplasmic labeling, calculated by digital imaging analysis.

The results of the tumor subtypes, adjacent epithelium, and the recurrent cases were compared by multivariate models: generalized linear mixed effects model and multiple correspondence analysis. Significance was set at p<0.05.

The sample of 50 individuals consisted of 25 (50%) females, with mean age 64.4±14.2 years and lesion diameter 0.73±0.47cm.

Table 1 shows the percentages of immunolabelled cells or the relative intensity of the cytoplasmic labeling of each marker, highlighting differences between ki67, survivin, and p53 among the different histological subtypes, especially the infiltrative type and the epidermis adjacent to the lesions. The p105 marker showed no differential behavior for any group.

Multivariate analysis (Figure 1) identified an individualized pattern for the different subtypes. Nodular forms were associated with higher p105 and lower values of survivin. The epidermis showed higher survivin and intermediate ki67 values. Recurrent BCC subtypes maintained the same expression patterns of proliferation and apoptosis markers as the other histological subtypes of primary BCC.

All BCC subgroups showed higher ki67-to-survivin ratio (Figure 2) than the epidermis (p<0.05). The ki67/p53 ratio differed between the infiltrative and superficial subtypes (p<0.05). The other ratios between markers did not present striking results (data not shown).

The current study explored patterns of proliferation and apoptosis in different BCC subgroups, compared to relapses and adjacent epithelium.

Ki67 is the principal marker of cell proliferation and serves as a prognostic index for various neoplasms, as well as cancerization field activity. The p53 protein is associated with apoptotic activity, resistance to proliferation, and invasion. Survivin, on the other hand, is expressed in several neoplasms, evidencing resistance to apoptosis.<sup>3</sup>

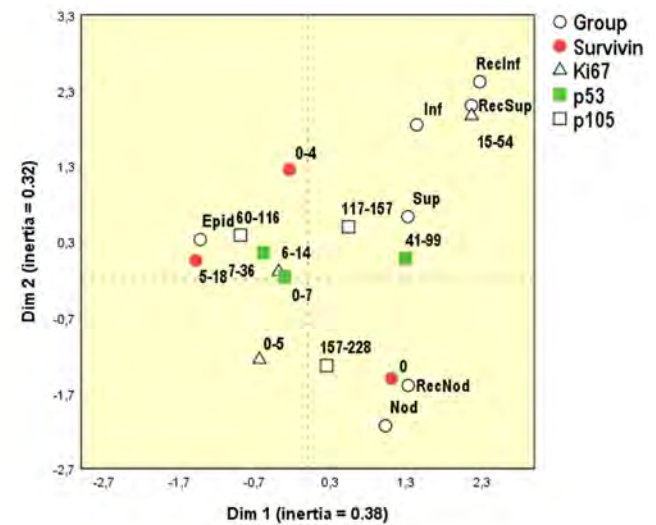


FIGURE 1: Perceptual map of Multiple Correspondence Analysis. Black circles represent the cell types studied, and the other symbols represent the response intensity of each marker (Epid = epidermis, RecNod, RecInf, and RecSup = recurrence with nodular, infiltrative, or superficial histology)

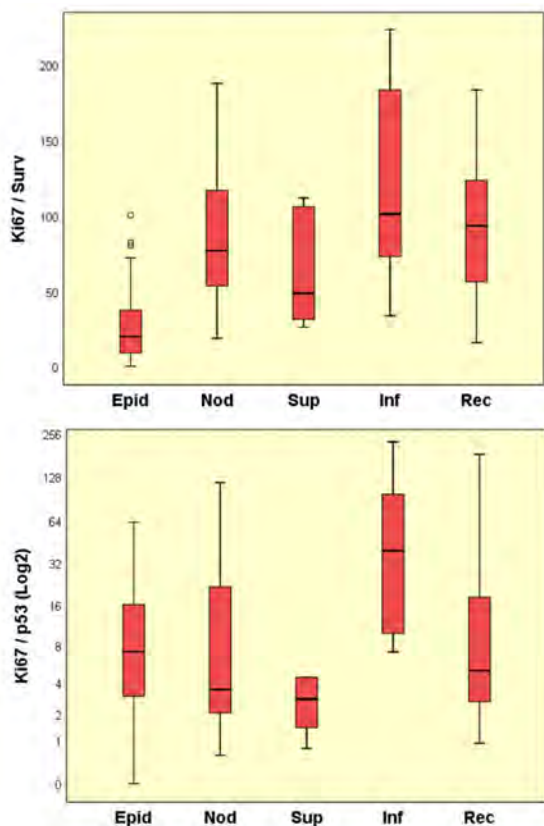
TABLE 1: Comparison of the median (p25-p75) percentages of immunolabeled nuclei (ki67, p53, and survivin) or relative cytoplasmic labeling intensity (p105) in histological subtypes of basal cell carcinomas and adjacent epidermis

	ki67*	p53*	Survivin*	p105**
Epidermis	7,5 (5,0-9,7)	7,2 (2,0-24,8)	2,3 (1,0-7,7)	124,7 (107,8-151,0)
Nodular	7,7 (5,3-11,7) <sup>a</sup>	16,8 (3,3-57,7) <sup>a</sup>	0,0 (0,0-0,0) <sup>b</sup>	144,5 (113,0-165,0)
Superficial	9,3 (5,0-17,7)	63,3 (18,0-71,7) <sup>a,b</sup>	0,8 (0,0-1,7) <sup>b</sup>	132,2 (101,7-189,7)
Infiltrative	17,0 (12,7-21,3) <sup>b</sup>	4,3 (0,0-15,0)	0,3 (0,0-1,0) <sup>b</sup>	150,0 (122,7-159,7)
Recurrence	12,5 (9,0-18,3) <sup>b</sup>	26,5 (4,0-62,7) <sup>a,b</sup>	0,0 (0,0-3,0) <sup>b</sup>	149,2 (127,0-157,3)

\* Percentage of immunolabelled nuclei in each histological field (hotspot)

\*\* Relative intensity of cytoplasmic labeling.

p <0.05 compared to infiltrative; b p <0.05 relative to the epidermis



Epid=epiderme; Nod=Nodular; Inf=Infiltrativo; Sup=Superficial; Rec=Recidivas

FIGURE 2: Ratios between expression of ki67 / survivin and ki67 / p53, among the subgroups studied

Neoplasms differed from the adjacent epithelium due to higher ki67 and lower survivin expression, suggesting that the latter may play a key role in resistance to apoptosis in the skin cancerization field. Unlike squamous cell carcinomas and actinic keratoses, the basal cell carcinomas express little survivin, indicating that they use another mechanism of resistance to apoptosis, such as interference in the p53 and Bcl2 pathways.<sup>4</sup>

The p53 protein appears to significantly influence the containment of invasive neoplasms. The higher ki67/p53 ratio in infiltrative versus superficial BCC may provide the basis for the invasive growth versus radial expansion characterizing these subgroups.<sup>5</sup>

There is some question as to modification of the biological behavior in BCC recurrence, but in this study the labelling patterns of the underlying histological subtypes were maintained. The highest relapse rate occurred in the infiltrative subtypes.

In conclusion, BCC subtypes and adjacent epithelium presented different patterns of proliferation and apoptosis expression. Recurrent tumors expressed the same patterns as the primary BCC subtypes. □

REFERENCES

1. Chinem VP, Miot HA. Epidemiology of basal cell carcinoma. *An Bras Dermatol.* 2011;86:292-305.
2. Ocanha JP, Dias JT, Miot HA, Stolf HO, Marques ME, Abbade LP. Relapses and recurrences of basal cell face carcinomas. *An Bras Dermatol.* 2011;86:386-8.
3. Corrêa MPD, Ferreira AP, Gollner AM, Rodrigues MF, Guerra MCS. Markers expression of cell proliferation and apoptosis in basal cell carcinoma. *An Bras Dermatol.* 2009;84:606-14.
4. Adamkov M, Halasova E, Rajcani J, Bencat M, Vybohova D, Rybarova S, et al. Relation between expression pattern of p53 and survivin in cutaneous basal cell carcinomas. *Med Sci Monit.* 2011;17:BR74-80.
5. Ansarin H, Daliri M, Soltani-Arabshahi R. Expression of p53 in aggressive and non-aggressive histologic variants of basal cell carcinoma. *Eur J Dermatol.* 2006;16:543-7.

AUTHORS' CONTRIBUTIONS

Jacqueline Silva Brito Lima	ORCID 0000-0003-2278-5585
Conception and planning of the study; Obtaining, analyzing and interpreting the data; Intellectual participation in propaedeutic and/or therapeutic conduct of the cases studied; Critical review of the literature	
Anna Carolina Miola	ORCID 0000-0001-8926-734X
Approval of the final version of the manuscript; Elaboration and writing of the manuscript; Critical review of the literature; Critical review of the manuscript	
Mariângela Esther Alencar Marques	ORCID 0000-0001-6947-5627
Obtaining, analyzing and interpreting the data; Effective participation in research orientation	
Hélio Amante Miot	ORCID 0000-0002-2596-9294
Statistical analysis; Approval of the final version of the manuscript; Conception and planning of the study; Elaboration and writing of the manuscript; Obtaining, analyzing and interpreting the data; Effective participation in research orientation; Intellectual participation in propaedeutic and/or therapeutic conduct of the cases studied; Critical review of the literature; Critical review of the manuscript	

**How to cite this article:** Lima JSB, Miola AC, Marques MEA, Miot HA. Patterns of proliferation and apoptosis in the different subtypes of basal cell carcinoma, adjacent epidermis, and recurrent forms. *An Bras Dermatol.* 2019;94(1):108-10.