

# Fibrinogen/Lymphocyte Count Ratio Can Be Used as a New Indicator of Prognosis in Patients with Hepatocellular Carcinoma After Radical Resection

This article was published in the following Dove Press journal:  
*Cancer Management and Research*

Yicheng Li<sup>1-3,\*</sup>  
Zhengli Li<sup>2,\*</sup>  
Kangjian Deng<sup>2,\*</sup>  
Minjun Liao<sup>2,4</sup>  
Shengguang Yuan<sup>1,2</sup>  
Zhaoquan Huang<sup>2,5</sup>

<sup>1</sup>Department of Hepatobiliary and Pancreatic Surgery, The Second Affiliated Hospital of Guilin Medical University, Guilin 541199, Guangxi, People's Republic of China; <sup>2</sup>Laboratory of Hepatobiliary and Pancreatic Surgery, Affiliated Hospital of Guilin Medical University, Guilin 541001, Guangxi, People's Republic of China; <sup>3</sup>Second Clinical Medical College, Guangxi Medical University, Nanning 530021, Guangxi, People's Republic of China; <sup>4</sup>Science Experiment Center, Guangxi Medical University, Nanning, Guangxi, 530021, People's Republic of China; <sup>5</sup>Department of Pathology, Guilin Medical University, Guilin 541001, Guangxi, People's Republic of China

\*These authors contributed equally to this work

**Purpose:** Preoperative fibrinogen levels are associated with the development, recurrence and metastasis of malignant tumors. This study was designed to investigate the clinical value of preoperative fibrinogen/lymphocyte count ratio (FLR) index in hepatocellular carcinoma (HCC).

**Patients and Methods:** The clinical data of 479 patients with HCC who underwent radical resection were retrospectively analyzed. The correlation between FLR and clinicopathological features was analyzed by chi-square test or non-parametric test. The overall survival (OS) and progression-free survival (PFS) were analyzed by Kaplan–Meier method.

**Results:** The optimal cut-off value of FLR was determined as 1.6 according to the receiver operating characteristic curve (ROC) analysis, in order to predict prognosis for HCC patients after radical resection. It was further found that FLR level was correlated with tumor size, TNM stage, microvascular invasion and prognosis. Multivariate Cox regression analyses found that FLR was an independent predictor for postoperative OS (overall survival) ( $p = 0.002$ ) and PFS (progression-free survival) ( $p = 0.001$ ) in patients with HCC; and the 1-, 3- and 5-year OS and PFS of HCC patients in the  $FLR \leq 1.6$  level group were significantly higher than those in the  $FLR > 1.6$  level group.

**Conclusion:** Preoperative FLR level is a novel and effective predictor of prognosis in patients with HCC, and elevated FLR level is associated with poor prognosis in patients with HCC.

**Keywords:** hepatocellular carcinoma, FLR, prognosis, recurrence

## Introduction

Hepatocellular carcinoma (HCC), one of the leading causes of cancer death in China, is insidious and has a high degree of malignancy.<sup>1</sup> Radical resection and professional rehabilitation training can improve the overall survival of patients with HCC,<sup>2</sup> however, HCC patients' long-term survival is still poor,<sup>3</sup> and some biomarkers were reported and used to predict the prognosis of HCC patients and guide clinical decision-making. At present, the conventional and classic factors indicators used to predict the prognosis of HCC are AFP, tumor size, TNM stage, microvascular invasion, etc. In view of the existence of obvious heterogeneity of HCC, it is necessary to explore more novel potential factors for sub-stratification analyses. Therefore, it is important to find more effective biomarkers to identify high-risk patients who are prone to suffer from recurrence and metastasis and provide better personalized treatments.

Correspondence: Zhaoquan Huang; Shengguang Yuan  
Laboratory of Hepatobiliary and Pancreatic Surgery, Affiliated Hospital of Guilin Medical University, Guilin 541001, Guangxi, People's Republic of China  
Email 477922581@qq.com;  
yuanshengguang6@163.com

The inflammatory response plays an important role in the progression of malignant tumors.<sup>4</sup> Inflammatory cells such as neutrophils,<sup>5</sup> macrophages,<sup>6</sup> and lymphocytes<sup>7</sup> are all involved in the biological behaviors of tumors. Fibrinogen is a coagulation factor synthesized in hepatic cells, is one kind of the positive acute-phase proteins, and fibrinogen is often increased during systemic inflammation.<sup>8</sup> On one hand, as a hemostatic factor, fibrinogen is a key factor in tumor progression; on the other hand, fibrinogen can bind to receptors that regulate tumor progression by regulating cell proliferation, cell migration, and apoptosis,<sup>9</sup> and therefore, affect tumor progression. Recent studies have shown that inflammatory response-related biomarkers can potentially predict the prognosis of tumors, such as systemic immune-inflammation index (SII),<sup>10</sup> neutrophil to lymphocyte ratio (NLR),<sup>11,12</sup> platelet lymphocyte ratio (PLR),<sup>13</sup> lymphocyte-to-monocyte ratio (LMR),<sup>14,15</sup> etc. As a new and effective method to predict the prognosis of cancer patients, inflammation index will be much more concerned. In view of the important role of fibrinogen and lymphocytes in tumor progression, this study focused on the potential application value of plasma fibrinogen level to peripheral blood lymphocyte ratio (FLR) index in the prognosis of HCC.

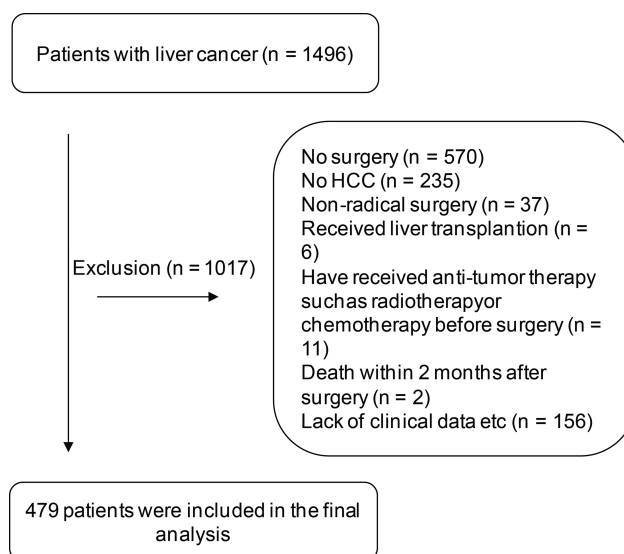
## Patients and Methods

### Research Object

The clinical data of 479 HCC patients who underwent radical resection in our hospital from 2006 to 2012 were retrospectively studied. The inclusion criteria were: postoperative pathological diagnosis of HCC; received radical resection and without distant metastasis. The exclusion criteria were: did not receive surgery, did not receive radical surgery, received liver transplantation, received anti-tumor therapy such as radiotherapy or chemotherapy before surgery; radiographic examination confirmed recurrence within 2 months after surgery; death within 2 months after surgery. And 156 patients were excluded due to the lack of clinical data, and therefore a total of 479 patients were enrolled and analyzed in this study. This study is in line with the declaration of Helsinki Principles. This study was approved by the Ethics Committee of the Affiliated Hospital of Guilin Medical University, and complied with the Declaration of Helsinki. Written informed consent was obtained from all patients (Figure 1).

### Clinical Information

Patients' general information and clinical data were collected, including gender, age, and laboratory results.



**Figure 1** Flow chart shows the selection of patients eligible for this study.

Laboratory tests include blood routines and biochemical indicators. Tumor size, tumor number, tumor location, and microvascular invasion were determined according to the postoperative specimens. The clinical stage of the tumor refers to the TNM staging criteria (Table 1).

### Follow-Up and Observation Index

All patients were followed up regularly by outpatient service or telephone until death or the deadline of March 31, 2019. The patients were reviewed every 2 months within the first 2 years after surgery and every 3–6 months thereafter. The follow-up monitoring includes symptoms, signs, blood routine, blood biochemistry, liver function, serum alpha-fetoprotein (AFP), abdominal ultrasonography, etc., and Computed Tomography (CT) or Magnetic Resonance Imaging (MRI) examinations if necessary. Progression free survival (PFS) was defined as the time from surgery to recurrence, metastasis, death or the last follow-up, and overall survival (OS) was defined as the time from surgery to death or the last follow-up.

### Statistical Analysis

Part of the data was expressed as the mean  $\pm$ SD, and statistical analyses were performed using the SPSS22.0 software (SPSS Inc., Chicago, IL).  $p < 0.05$  was considered statistically significant. The correlation between FLR and clinicopathological characteristics was analyzed by chi-square test or non-parametric test. OS and PFS were analyzed by Kaplan–Meier method using the Log rank

**Table 1** Clinical and Biochemical Data of Examined Patients

Parameter	Mean±SD*
Age (years)	50.21±11.46
HBsAg: positive/negative (n)	402/77
Tumor size (range, cm)	8.31±4.92
WBC ( $\times 10^9/L$ )	6.40±2.31
LYMPH ( $\times 10^9/L$ )	1.65±0.61
Platelets ( $\times 10^9/L$ )	183.65±79.86
Albumin (g/L)	38.59±4.78
Globulin (g/L)	31.07±6.05
TB ( $\mu\text{mol/L}$ ): median, range	13.37 (3.66–229.05)
DB ( $\mu\text{mol/L}$ ): median, range	4.9 (0.5–168.2)
ALT (U/L)	47.28±45.61
AST (U/L)	54.07±48.26
ALP (U/L)	102.72±68.15
AFP	337.2 (0.25–328,030)
FIB	2.96±1.05
FLR	2.05±1.14

**Note:** \*Data presented as mean ± SD or others.

**Abbreviations:** SD, standard deviation; N, number of patients; HBsAg, hepatitis B surface antigen; AFP, alpha-fetoprotein; WBC, white blood cell; LYMPH, lymphocyte count; TB, total bilirubin; DB, direct bilirubin; ALT, alanine aminotransferase; AST, aspartate aminotransferase; ALP, alkaline phosphatase.

test. Cox regression model was used to evaluate the multi-factor hazard ratio.

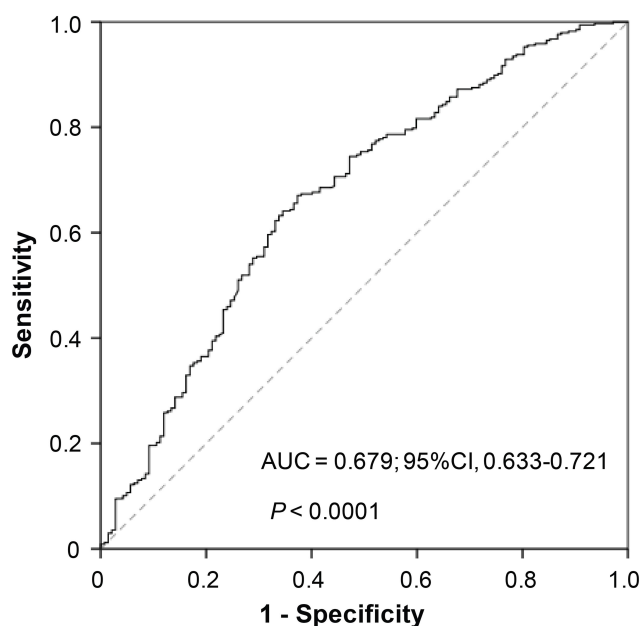
## Results

### The Optimal Cutoff Value of FLR

The ROC curve analysis was used to obtain the optimal cut-off value of FLR, and the optimal cut-off value was determined as 1.6 to predict postoperative patients' survival, with relatively high sensitivity and specificity (Figure 2).

### Relationship Between Preoperative FLR Level and Clinicopathological Characteristics of HCC

The relationship between preoperative FLR and clinicopathological variables in patients with HCC was analyzed, as is shown in Table 2. The optimal cut-off value of FLR was determined according to the ROC curve and then all patients were divided into two groups: low FLR level group (FLR  $\leq$  1.6, n = 196) and high FLR level group (FLR > 1.6, n = 283). The results showed that there was a positive correlation between FLR level and tumor size (>5 cm) ( $\chi^2 = 32.69$ ,  $p < 0.001$ ), TNM III–IV stage ( $\chi^2 = 33.86$ ,  $p < 0.001$ ), microvascular invasion ( $\chi^2 = 19.40$ ,  $p < 0.001$ ) and recurrence ( $\chi^2 = 9.218$ ,  $p = 0.002$ ). However, no correlation was found between preoperative FLR and



**Figure 2** Determination of the cut-off value for FLR in HCC patients. **Abbreviations:** FLR, plasma fibrinogen level to lymphocyte ratio; HCC, hepatocellular carcinoma.

age, hepatitis B surface antigen, tumor number, alcohol consumption, and serum alpha-fetoprotein level ( $p > 0.05$ ). Figure 3A–C showed that TNM stage, tumor size, and microvascular invasion were positively correlated with FLR levels ( $p < 0.001$ ). The above results suggested that high FLR level status was more likely to promote malignant progression, invasion and postoperative recurrence of HCC.

### Predictive Factors Analysis of OS and PFS for Postoperative HCC Patients

Univariate analysis showed that preoperative FLR > 1.6 (HR = 2.03; 95% CI: 1.62–2.51,  $p < 0.001$ ), tumor size (>5 cm), tumor number  $\geq 2$ , TNM III–IV stage, recurrence, microvascular invasion, AFP > 20ng/mL were unfavorable predictors of OS. Multivariate Cox regression model analysis suggested that preoperative FLR > 1.6 (HR = 1.56; 95% CI: 1.18–2.09,  $p = 0.002$ ), tumor size (> 5 cm), TNM III–IV stage, recurrence, microvascular invasion were independent predictors of shorter OS. Likewise, in the univariate analysis, preoperative FLR > 1.6 (HR = 1.96; 95% CI: 1.60–2.47,  $p < 0.001$ ), tumor size (>5 cm), tumor number  $\geq 2$ , TNM III–IV stage, microvascular invasion, AFP > 20 ng/mL were unfavorable predictors of PFS. And multivariate Cox regression model analysis revealed that only preoperative FLR > 1.6 (HR = 1.58; 95% CI: 1.21–2.10,  $p = 0.001$ ), tumor size (>5 cm), TNM III–IV

**Table 2** Correlation Between the Clinicopathologic Variables and FLR in HCC

Clinical Character	Clinical Variable	No. of Patients	FLR level		$\chi^2$	p value
			≤ 1.6 n (%)	> 1.6 n (%)		
Age (years)	≤ 55	319	131(41.1)	188(58.9)	0.009	0.926
	> 55	160	65(40.6)	95(59.4)		
HBsAg	Negative	77	34(44.2)	43(55.8)	0.398	0.528
	Positive	402	162(40.3)	240(59.7)		
Tumor size (range, cm)	≤ 5	170	99(58.2)	71(41.8)	32.69	<0.001
	> 5	309	97(31.4)	212(68.6)		
Tumor number	Single	351	146(41.6)	205(58.4)	0.249	0.618
	Multiple	128	50(39.1)	78(60.9)		
Drinking	Absent	267	114(42.7)	153(57.3)	0.789	0.374
	Present	212	82(38.7)	130(61.3)		
TNM stage	I–II	210	117(55.7)	93(44.3)	33.86	<0.001
	III–IV	269	79(29.4)	190(70.6)		
Microvascular invasion	Absent	341	161(47.2)	180(52.8)	19.40	<0.001
	Present	138	35(25.4)	103(74.6)		
Recurrence	Absent	367	164(44.7)	203(55.3)	9.218	0.002
	Present	112	32(28.6)	80(71.4)		
AFP (ng/mL)	≤ 20	143	67(46.9)	76(53.1)	2.970	0.85
	> 20	336	129(38.4)	207(61.6)		

**Abbreviations:** FLR, plasma fibrinogen level to lymphocyte ratio; N, number of patients; HBsAg, hepatitis B surface antigen; TNM, tumor-node-metastasis; AFP, alpha-fetoprotein; AST, aspartate aminotransferase.

stage, microvascular invasion were independent predictors of shorter PFS (Table 3).

## The Predictive Value of FLR and the Novel Model Based on 4 Variables for OS and PFS in HCC

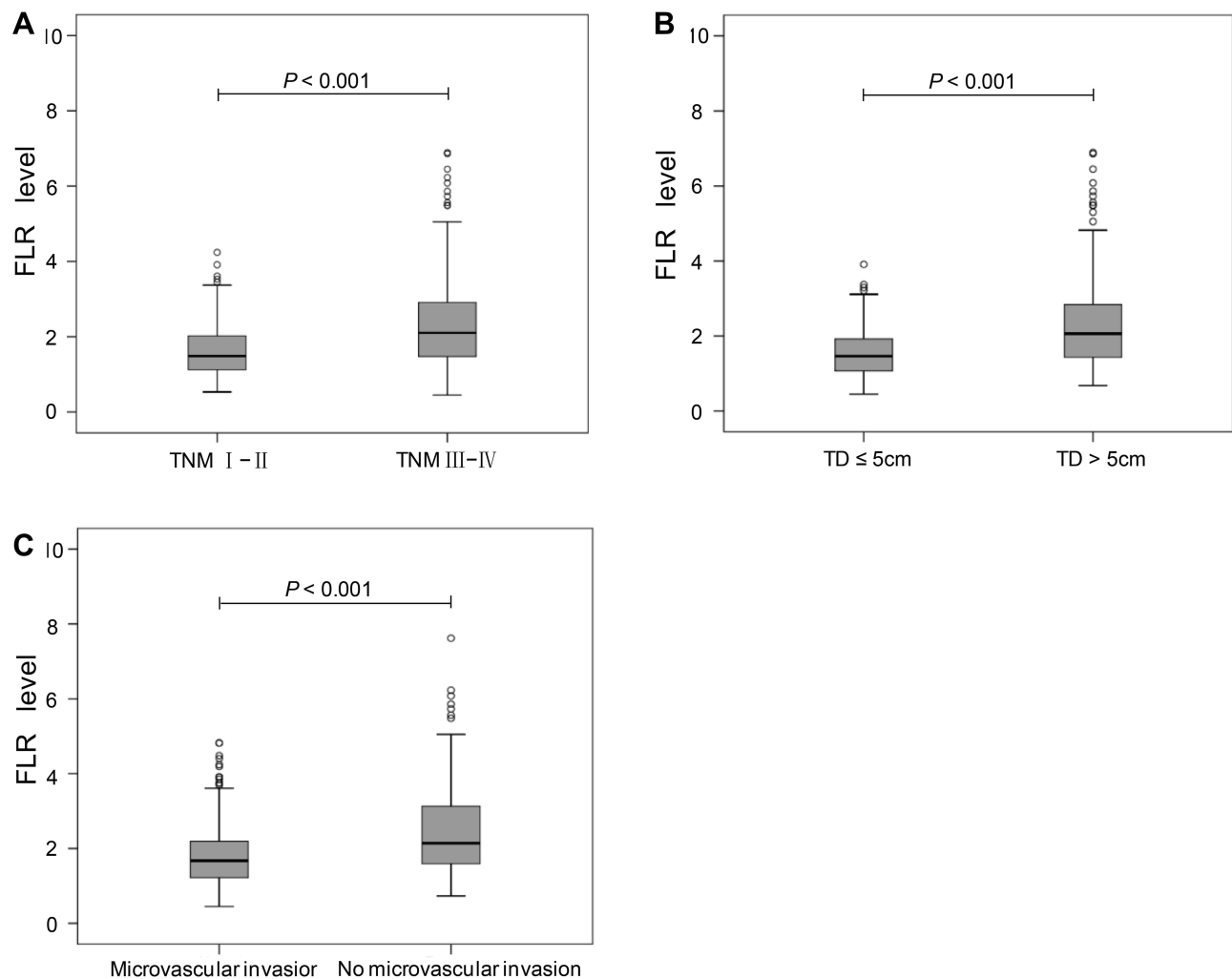
According to the Kaplan–Meier analysis, in the low FLR level group, the median OS was 69.2 months and the median PFS was 60.4 months, whereas in the high FLR level group, the median OS was 44.2 months and the median PFS was 34.4 months. As for PFS, the 1-, 3-, and 5-year progression-free survival rates of patients in the low FLR level group were significantly higher than those in the high FLR level group, respectively (74% vs 56.25%, 46.5% vs 43.6% and 24.1% vs 18.9%,  $p < 0.001$ ). For OS, the 1-, 3-, and 5-year overall survival rates of the low FLR level group were significantly higher than those of the high FLR level group (86.7% vs 77.4%, 61.7% vs 39.6% and 48.8% vs 25.4%,  $p < 0.001$ ) (Figure 4A and B).

Then, each of the four important variables was assigned and re-evaluated in order to construct a new

scoring model, including FLR, tumor size, TNM stage, and microvascular invasion. One point would be given to the following circumstances: FLR > 1.6, tumor size (>5 cm), TNM III–IV stage, and microvascular invasion; otherwise, the score is 0. Therefore, the highest score is 4, and the lowest score is 0. According to their scores, HCC patients were divided into the low-risk group (score 0 points), the medium-risk group (score 1–2), and the high-risk group (score 3–4). The analysis revealed that PFS ( $p < 0.001$ ,  $\chi^2 = 81.8$ ) and OS ( $p < 0.001$ ,  $\chi^2 = 111.2$ ) were significantly different among the three groups (Figure 4C and D), suggesting that this novel scoring model constructed by four variables may have favorable predictive value for the prognosis of HCC.

## Comparison of FLR and AFP on PFS and OS in Subgroups of HCC

In the subgroup of patients with tumor size ≤3 cm, compared to FLR ≤ 1.6, patients with FLR > 1.6 had a shorter PFS (median survival time: 82.2 vs 50.8 months,  $p = 0.011$ ), and a shorter OS (median survival time: 88.0 vs 60.9 months,  $p = 0.023$ ) (Figure 5A–D); similar results



**Figure 3** Box plot showing the relationship between FLR levels and TNM stage (A) TD (B) and Microvascular invasion (C).  
**Abbreviations:** TD, tumor diameter; TNM, tumor-node-metastasis.

were found in the subgroup of patients with tumor size  $\leq 5$  cm: patients with FLR  $> 1.6$  had a shorter PFS (median survival time: 77.1 vs 48.4 months,  $p < 0.001$ ) and a shorter OS (median survival time: 85.8 vs 60.8 months,  $p < 0.001$ ) (Figure 5E–H). In contrast, there was no prognostic prediction value for AFP (cut-off value: 20 ng/mL) in the above two subgroups.

## Discussion

Researches on the mechanism of tumor progression and improvements on tumor treatment strategies will help improve the quality of life for HCC patients.<sup>16</sup> The mechanism of hepatoma's development and progression is complicated; and it is the result of a combination of various factors, and one critical factor is the inflammation condition. Inflammation is closely related to the occurrence of tumors.<sup>4</sup> Inflammation in the tumor

microenvironment also promotes tumor growth, proliferation and metastasis. Chronic hepatitis is also a major factor in the development of HCC, and inflammation in the liver micro-environment can promote the development of liver cancer.<sup>17</sup> Fibrinogen, a coagulation factor synthesized in hepatocytes, is one kind of the positive acute-phase proteins that plays an important role in the development of inflammation. Fibrinogen can change the functions of inflammatory cells function through different receptors and mechanisms.<sup>18</sup> As a hemostatic factor, fibrinogen is the critical and decisive factor of tumor cell's metastasis potency, for it can combine with other proteins and deposit on the extracellular matrix, and then functioning as a scaffold, which can combine with the growth factors, as a result, promotes cell proliferation, adhesion and tumor metastasis.<sup>19</sup> Studies have shown that elevated serum fibrinogen levels are associated with poor prognosis in patients

**Table 3** Univariate and Multivariate Cox Regression Analyses of the FLR with Clinicopathologic Characteristics

Variables	Univariate Analysis			Multivariate Analysis		
	HR	95% CI	p value	HR	95% CI	p value
Overall survival						
FLR (> 1.6 vs ≤ 1.6)	2.03	1.62–2.51	< 0.001	1.56	1.18–2.09	0.002
Gender (male vs female)	1.11	0.80–1.53	0.526			
Age, yeas (> 55 vs ≤ 55)	0.85	0.68–1.07	0.163			
HBsAg (positive vs negative)	1.01	0.75–1.34	0.960			
Cirrhosis (positive vs negative)	0.97	0.66–1.40	0.884			
Tumor size, cm (>5 vs ≤ 5)	2.30	1.76–2.87	< 0.001	1.39	1.09–1.76	0.007
Tumor number (multiple vs single)	1.42	1.12–1.80	0.003			
Drinking (present vs absent)	1.06	0.86–1.31	0.572			
TNM stage (III–IV vs I–II)	2.37	2.02–3.12	< 0.001	1.71	1.31–2.26	< 0.001
Recurrence (present vs absent)	2.06	1.70–2.65	< 0.001	1.62	1.26–2.16	0.001
Vascular invasion (present vs absent)	2.16	1.76–2.63	< 0.001	1.41	1.09–1.84	0.009
AFP, ng/mL (> 20 vs ≤ 20)	1.45	1.16–1.86	0.002			
Progression-free survival						
FLR (> 1.6 vs ≤ 1.6)	1.96	1.60–2.47	< 0.001	1.58	1.21–2.10	0.001
Gender (male vs female)	1.07	0.77–1.48	0.656			
Age, yeas (> 55 vs ≤ 55)	0.89	0.71–1.12	0.329			
HBsAg (positive vs negative)	1.02	0.76–1.36	0.905			
Cirrhosis (positive vs negative)	0.98	0.67–1.41	0.953			
Tumor size, cm (> 5 vs ≤ 5)	2.12	1.68–2.66	< 0.001	1.38	1.08–1.75	0.008
Tumor number (multiple vs single)	1.38	1.09–1.72	0.007			
Drinking (present vs absent)	1.04	0.84–1.29	0.700			
TNM stage (III–IV vs I–II)	2.24	1.86–2.83	< 0.001	1.66	1.32–2.31	< 0.001
Vascular invasion (present vs absent)	1.89	1.53–2.32	< 0.001	1.43	1.12–1.81	0.004
AFP, ng/mL (> 20 vs ≤ 20)	1.44	1.13–1.82	0.004			

**Abbreviations:** HR, hazard ratio; CI, confidence interval; HBsAg, hepatitis B surface antigen; TNM, tumor-node-metastasis; AFP, alpha-fetoprotein.

with liver cancer,<sup>20–22</sup> esophageal cancer,<sup>23</sup> ovarian cancer.<sup>24</sup> The involvement of lymphocytes in the immune function plays an extremely important role in many aspects, such as tumor immunization assessment<sup>25</sup> and immunological therapy.<sup>26</sup>

In this study, the optimal cut-off value of FLR was determined to be 1.6, and based on this value, elevated FLR level was found to be positively correlated with tumor size, TNM stage, microvascular invasion, recurrence, and poor prognosis of HCC, suggesting that FLR may play a crucial role in HCC, and that high FLR level can promote tumor's growth, vascular invasion and other biological behaviors evolution in HCC, and then exert a great impact on the recurrence and survival prognosis of postoperative HCC patients. In view of this important finding, the malignant progression of HCC could be postponed, postoperative recurrence could be reduced and patients' survival time may be prolonged, if HCC patients'

physical condition is well managed, such as the fibrinogen level and inflammatory condition are well controlled, the immune environment is improved, etc.

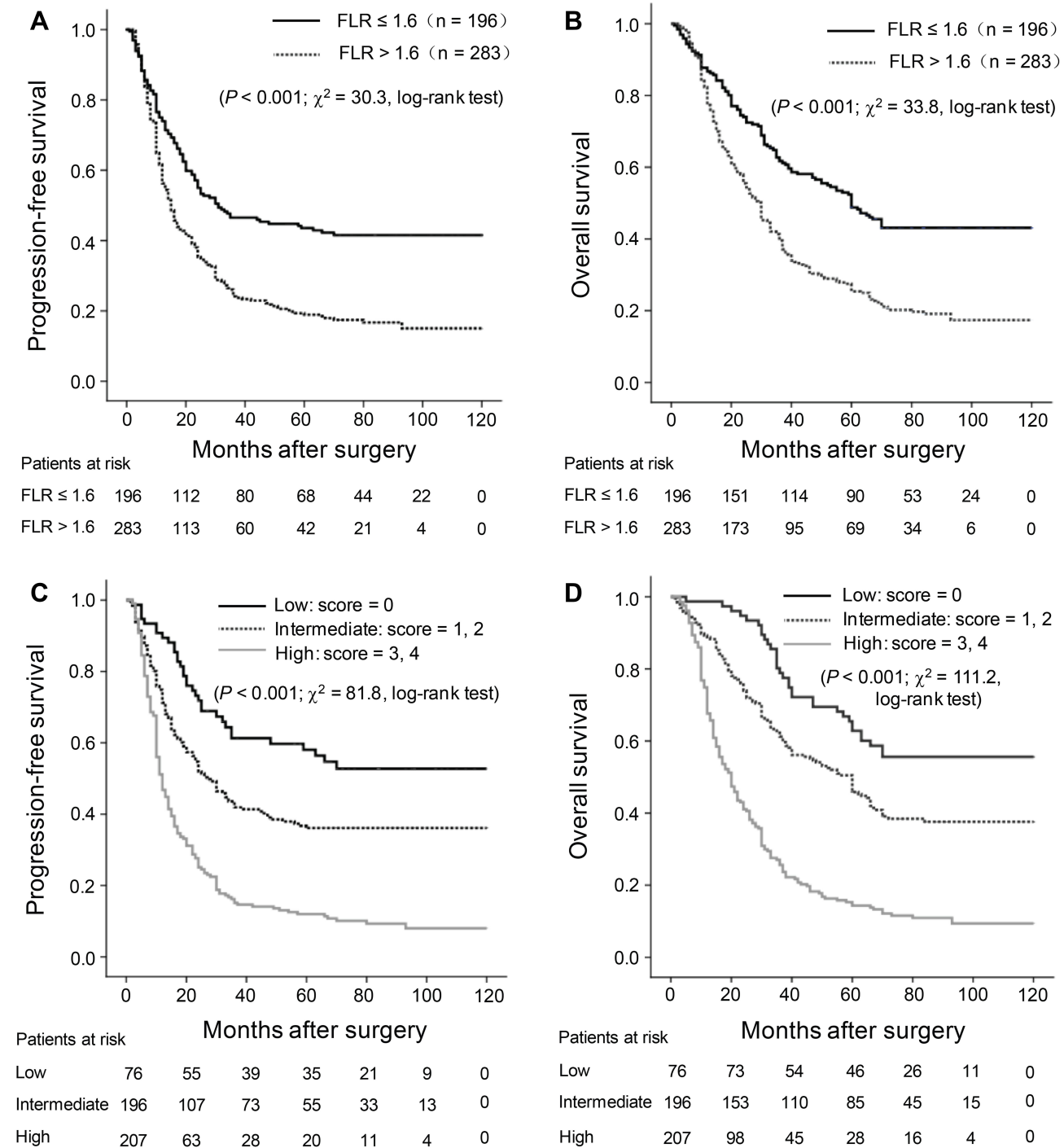
For patients with elevated FLR and poor prognosis, it is possible to select appropriate treatment methods based on the actual clinical conditions of the patients, such as consider the combined treatment of transarterial chemoembolization (TACE) + radiofrequency ablation (RFA) instead of surgical resection.<sup>27</sup> Furthermore, the application of different staging standards also has an impact on the prognosis of HCC patients.<sup>28</sup> The current international staging standards include Barcelona Clinic Liver Cancer (BCLC) staging system, Hong Kong Liver Cancer (HKLC) staging system, TNM staging system, etc. Medical institutions should select a more suitable staging system for their HCC patients.<sup>29</sup>

Except for FLR being an independent predictor of survival prognosis in HCC, some previous studies have

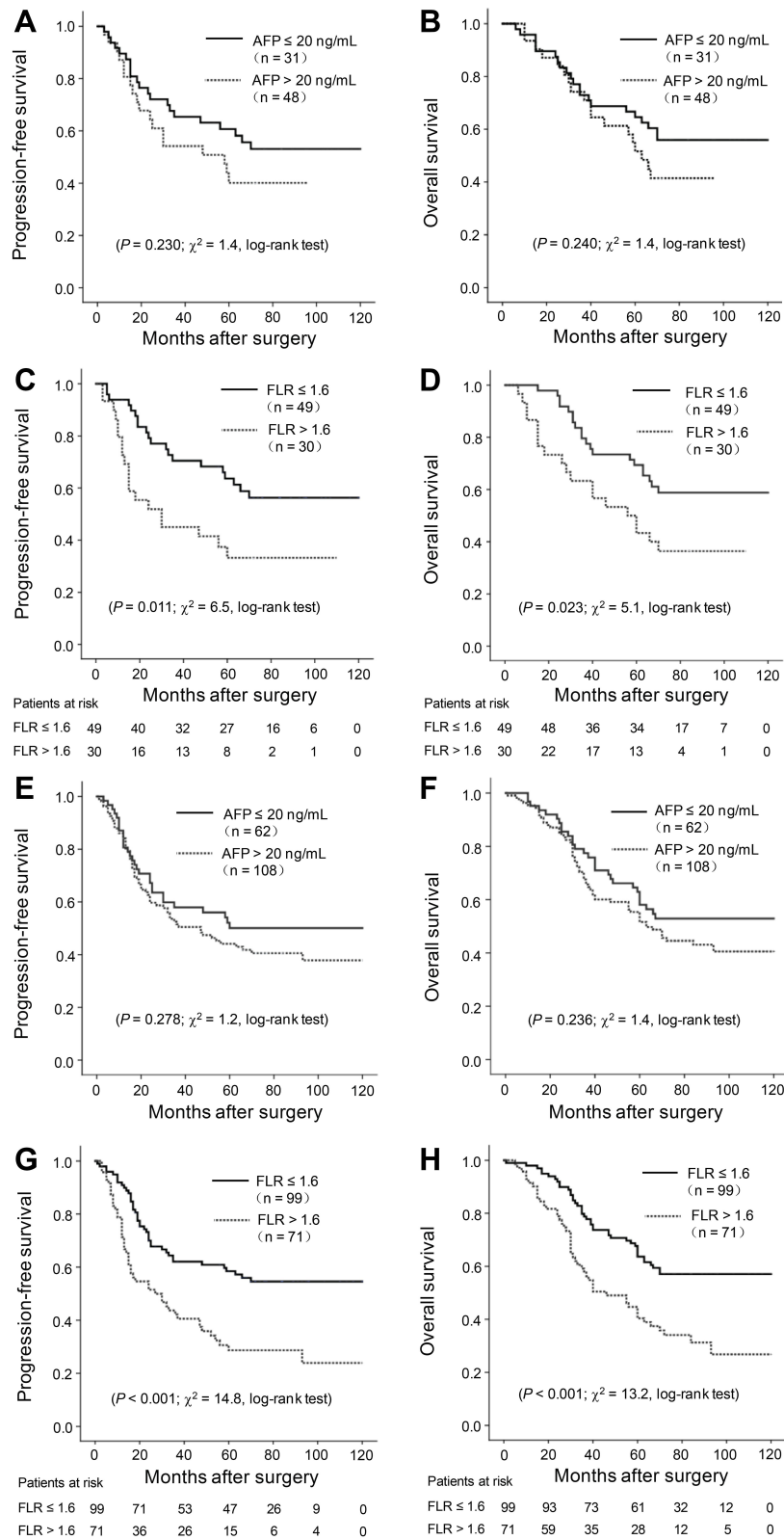
found that larger tumor size (greater than 5 cm), higher TNM stage (stage III–IV), and microvascular invasion are all independent predictors for poor prognosis of HCC. In this study, these results have been verified again. Interestingly, the new scoring model precisely consisting of the above four independent predictive factors has

prominent prognostic potency for HCC, and its potential significance is worthy of further discussions.

Although the study has found a series of indicators or models that appear to be useful in the diagnosis and prognosis of HCC, AFP is still the index for HCC’s diagnosis and postoperative monitoring in clinical practice, but



**Figure 4** Kaplan–Meier curves of progression-free survival (A) and overall survival (B) are shown for HCC patients. Progression-free survival curves (C) and overall survival curves (D) for the HCC patients according to the score.



**Figure 5** Kaplan–Meier analysis revealed the relationship of FLR and AFP with PFS or OS in the HCC patients with tumor size < 3cm (A–D) and tumor size < 5cm (E–H).



actually, AFP's ability to predict prognosis for small and medium-sized HCC is limited.<sup>30</sup> In this study, we investigated the postoperative survival of HCC patients with tumor size  $\leq 5$  cm and  $\leq 3$  cm, respectively, and the results showed that AFP has no prognostic significance in these sub-groups; in contrast, HCC patients in these sub-groups can be favorably divided into two significant groups: FLR  $\leq 1.6$  group and FLR  $> 1.6$  group. It was suggested that FLR may be a new potential indicator of HCC's prognosis prediction, and FLR may be better than AFP to some extent.

This study also has certain limitations. For example, this was a retrospective study in which patients were selected from a single medical institution with 83.9% cases were hepatitis B-related HCC, 156 patients were excluded due to lack of clinical data, and the data of FLR were collected preoperatively. In the following studies, multi-centered and different viral types originated HCC patients should be enrolled in prospective analyses, and regular follow-up data should also be added for comprehensive demonstration of FLR's potential value in the prognosis of HCC. The FLR, a low-cost and easily obtained indicator for HCC prognosis, is worthy of further investigations for its important significance in the future clinical practice; and it is expected that FLR might have greater potential for more accurate prognostic prediction and better guidance significance for clinical decision-making in HCC patients.

## Acknowledgments

This work was supported in part by the National Natural Science Foundation of China (No. 81773148), the National Key Sci-Tech Special Project of China (No. 2018ZX10302207) and the Natural Science Foundation of Guangxi (No. 2018GXNSFDA138001).

## Disclosure

The authors report no conflicts of interest in this work.

## References

- Chen W, Zheng R, Baade PD, et al. Cancer statistics in China, 2015. *CA Cancer J Clin*. 2016;66(2):115–132. doi:10.3322/caac.21338
- Wang B, Shelat VG, Chow JLL, et al. Prehabilitation program improves outcomes of patients undergoing elective liver resection. *J Surg Res*. 2020;251:119–125. doi:10.1016/j.jss.2020.01.009
- Gluer AM, Cocco N, Laurence JM, et al. Systematic review of actual 10-year survival following resection for hepatocellular carcinoma. *Hpb*. 2012;14(5):285–290. doi:10.1111/j.1477-2574.2012.00446.x
- Grivennikov SI, Greten FR, Karin M. Immunity, inflammation, and cancer. *Cell*. 2010;140(6):883–899. doi:10.1016/j.cell.2010.01.025
- Coffelt SB, Kersten K, Doornebal CW, et al. IL-17-producing gamma-delta T cells and neutrophils conspire to promote breast cancer metastasis. *Nature*. 2015;522(7556):345–348. doi:10.1038/nature14282
- Na YR, Je S, Seok SH. Metabolic features of macrophages in inflammatory diseases and cancer. *Cancer Lett*. 2018;413:46–58. doi:10.1016/j.canlet.2017.10.044
- Ostromov D, Fekete-Drimusz N, Saborowski M, et al. CD4 and CD8 T lymphocyte interplay in controlling tumor growth. *Cell Mol Life Sci*. 2018;75(4):689–713. doi:10.1007/s00018-017-2686-7
- Ghanim B, Hoda MA, Klikovits T, et al. Circulating fibrinogen is a prognostic and predictive biomarker in malignant pleural mesothelioma. *Br J Cancer*. 2014;110(4):984–990. doi:10.1038/bjc.2013.815
- Steinbrecher KA, Horowitz NA, Blevins EA, et al. Colitis-associated cancer is dependent on the interplay between the hemostatic and inflammatory systems and supported by integrin alpha(M)beta(2) engagement of fibrinogen. *Cancer Res*. 2010;70(7):2634–2643. doi:10.1158/0008-5472.CAN-09-3465
- Hu B, Yang XR, Xu Y, et al. Systemic immune-inflammation index predicts prognosis of patients after curative resection for hepatocellular carcinoma. *Clin Cancer Res*. 2014;20(23):6212–6222. doi:10.1158/1078-0432.CCR-14-0442
- Shelat VG. Role of inflammatory indices in management of hepatocellular carcinoma-neutrophil to lymphocyte ratio. *Ann Transl Med*. 2020;8(15):912. doi:10.21037/atm-2020-90
- Robinson AV, Keeble C, Lo MCI, et al. The neutrophil-lymphocyte ratio and locoregional melanoma: a multicentre cohort study. *Cancer Immunol Immun*. 2020;69(4):559–568. doi:10.1007/s00262-019-02478-7
- Kabir T, Ye M, Mohd Noor NA, et al. Preoperative neutrophil-to-lymphocyte ratio plus platelet-to-lymphocyte ratio predicts the outcomes after curative resection for hepatocellular carcinoma. *Int J Hepatol*. 2019;2019:4239463. doi:10.1155/2019/4239463
- Nishijima TF, Muss HB, Shachar SS, et al. Prognostic value of lymphocyte-to-monocyte ratio in patients with solid tumors: a systematic review and meta-analysis. *Cancer Treat Rev*. 2015;41(10):971–978. doi:10.1016/j.ctrv.2015.10.003
- Mandaliya H, Jones M, Oldmeadow C, et al. Prognostic biomarkers in stage IV non-small cell lung cancer (NSCLC): neutrophil to lymphocyte ratio (NLR), lymphocyte to monocyte ratio (LMR), platelet to lymphocyte ratio (PLR) and advanced lung cancer inflammation index (ALI). *Transl Lung Cancer Res*. 2019;8(6):886–894. doi:10.21037/tlcr.2019.11.16
- Ahmed S, de Souza NN, Qiao W, et al. Quality of life in hepatocellular carcinoma patients treated with transarterial chemoembolization. *Hpb Surg*. 2016;2016:6120143. doi:10.1155/2016/6120143
- Galun E. Liver inflammation and cancer: the role of tissue microenvironment in generating the tumor-promoting niche (TPN) in the development of hepatocellular carcinoma. *Hepatology*. 2016;63(2):354–356. doi:10.1002/hep.28344
- Luyendyk JP, Schoenecker JG, Flick MJ. The multifaceted role of fibrinogen in tissue injury and inflammation. *Blood*. 2019;133(6):511–520. doi:10.1182/blood-2018-07-818211
- Palumbo JS, Kombrinck KW, Drew AF, et al. Fibrinogen is an important determinant of the metastatic potential of circulating tumor cells. *Blood*. 2000;96(10):3302–3309. doi:10.1182/blood.V96.10.3302
- Simpson-Haidaris PJ, Rybarczyk B. Tumors and fibrinogen. The role of fibrinogen as an extracellular matrix protein. *Ann N Y Acad Sci*. 2001;936:406–425. doi:10.1111/j.1749-6632.2001.tb03525.x
- Huang G, Jiang H, Lin Y, et al. Prognostic value of plasma fibrinogen in hepatocellular carcinoma: a meta-analysis. *Cancer Manag Res*. 2018;10:5027–5041. doi:10.2147/CMAR.S175780
- Gan W, Yi Y, Fu Y, et al. Fibrinogen and C-reactive protein score is a prognostic index for patients with hepatocellular carcinoma undergoing curative resection: a prognostic nomogram study. *J Cancer*. 2018;9(1):148–156. doi:10.7150/jca.22246

23. Zhang X, Long Q. Elevated serum plasma fibrinogen is associated with advanced tumor stage and poor survival in hepatocellular carcinoma patients. *Medicine (Baltimore)*. 2017;96(17):e6694. doi:10.1097/MD.0000000000006694
24. Lv GY, Yu Y, An L, et al. Preoperative plasma fibrinogen is associated with poor prognosis in esophageal carcinoma: a meta-analysis. *Clin Transl Oncol*. 2018;20(7):853–861. doi:10.1007/s12094-017-1794-z
25. Luo Y, Kim HS, Kim M, et al. Elevated plasma fibrinogen levels and prognosis of epithelial ovarian cancer: a cohort study and meta-analysis. *J Gynecol Oncol*. 2017;28(3):e36. doi:10.3802/jgo.2017.28.e36
26. Dieci MV, Radosevic-Robin N, Fineberg S, et al. Update on tumor-infiltrating lymphocytes (TILs) in breast cancer, including recommendations to assess TILs in residual disease after neoadjuvant therapy and in carcinoma in situ: a report of the International Immuno-Oncology Biomarker Working Group on Breast Cancer. *Semin. Cancer Biol*. 2018;52:16–25. doi:10.1016/j.semcancer.2017.10.003
27. Zhang D, He W, Wu C, et al. Scoring system for tumor-infiltrating lymphocytes and its prognostic value for gastric cancer. *Front Immunol*. 2019;10:71. doi:10.3389/fimmu.2019.00071
28. Gui CH, Baey S, D’Cruz RT, et al. Trans-arterial chemoembolization + radiofrequency ablation versus surgical resection in hepatocellular carcinoma – A meta-analysis. *Eur J Surg Oncol*. 2020;46(5):763–771. doi:10.1016/j.ejso.2020.01.004
29. Selby LKE, Tay RXY, Woon WWL, et al. Validity of the Barcelona clinic liver cancer and Hong Kong liver cancer staging systems for hepatocellular carcinoma in Singapore. *J Hepatobiliary Pancreat Sci*. 2017;24(3):143–152. doi:10.1002/jhbp.423
30. Giannini EG, Marengo S, Borgonovo G, et al. Alpha-fetoprotein has no prognostic role in small hepatocellular carcinoma identified during surveillance in compensated cirrhosis. *Hepatology*. 2012;56(4):1371–1379. doi:10.1002/hep.25814

## Cancer Management and Research

Dovepress

### Publish your work in this journal

Cancer Management and Research is an international, peer-reviewed open access journal focusing on cancer research and the optimal use of preventative and integrated treatment interventions to achieve improved outcomes, enhanced survival and quality of life for the cancer patient.

The manuscript management system is completely online and includes a very quick and fair peer-review system, which is all easy to use. Visit <http://www.dovepress.com/testimonials.php> to read real quotes from published authors.

Submit your manuscript here: <https://www.dovepress.com/cancer-management-and-research-journal>