

## Clinical Study

# A large Venous-Arterial PCO<sub>2</sub> Is Associated with Poor Outcomes in Surgical Patients

João M. Silva Jr.,<sup>1</sup> Amanda M. Ribas R. Oliveira,<sup>2</sup> Juliano Lopes Segura,<sup>3</sup>  
Marcel Henrique Ribeiro,<sup>3</sup> Carolina Nacevicius Sposito,<sup>3</sup> Diogo O. Toledo,<sup>2</sup>  
Ederlon Rezende,<sup>2</sup> and Luiz M. Sá Malbouisson<sup>4</sup>

<sup>1</sup> *Anestesiologia e Cuidados Intensivos, Hospital do Servidor Público Estadual, 04039-901 São Paulo, SP, Brazil*

<sup>2</sup> *De Terapia Intensiva, Hospital do Servidor Público Estadual, 04039-901 São Paulo, SP, Brazil*

<sup>3</sup> *Anestesiologia, Hospital do Servidor Público Estadual, 04039-901 São Paulo, SP, Brazil*

<sup>4</sup> *De Terapia Intensiva, Hospital das Clínicas, 05403-900 São Paulo, SP, Brazil*

Correspondence should be addressed to João M. Silva Jr., joao.s@globo.com

Received 23 May 2011; Revised 31 July 2011; Accepted 4 August 2011

Academic Editor: William McBride

Copyright © 2011 João M. Silva Jr et al. This is an open access article distributed under the Creative Commons Attribution License, which permits unrestricted use, distribution, and reproduction in any medium, provided the original work is properly cited.

**Background.** This study evaluated whether large venous-arterial CO<sub>2</sub> gap (PCO<sub>2</sub> gap) preoperatively is associated to poor outcome. **Method.** Prospective study which included adult high-risk surgical patients. The patients were pooled into two groups: wide [P(v-a)CO<sub>2</sub>] versus narrow [P(v-a)CO<sub>2</sub>]. In order to determine the best value to discriminate hospital mortality, it was applied a ROC (receiver operating characteristic) curve for the [P(v-a)CO<sub>2</sub>] values collected preoperatively, and the most accurate value was chosen as cut-off to define the groups. **Results.** The study included 66 patients. The [P(v-a)CO<sub>2</sub>] value preoperatively that best discriminated hospital mortality was 5.0 mmHg, area = 0.73. Preoperative patients with [P(v-a)CO<sub>2</sub>] more than 5.0 mmHg presented a higher hospital mortality (36.4% versus 4.5%  $P = 0.004$ ), higher prevalence of circulatory shock (56.8% versus 22.7%  $P = 0.01$ ) and acute renal failure postoperatively (27.3% versus 4.5%  $P = 0.02$ ), and longer hospital length of stays 20.0 (14.0–30.0) versus 13.5 (9.0–25.0) days  $P = 0.01$ . **Conclusions.** The PCO<sub>2</sub> gap values more than 5.0 mmHg preoperatively were associated with worse postoperatively outcome.

## 1. Introduction

Although every year millions of surgeries are performed all around the world, few patients that undergo major surgeries are judged to be of high risk for postoperative complications and death [1]. An observational study reported that only 12.5% of all surgical procedures are considered high risk, but over 80% of the deaths which occurred were in the high-risk group [1]. Despite the high mortality rate, less than 15% of those patients are admitted to intensive care units (ICU) [1], which shows that the individual risk may easily be underestimated and that high-risk patients may not be recognized.

The mechanisms by which inflammatory response and tissue hypoperfusion occur in major surgery are still not entirely clear, but evidence indicates that oxygen requirements

increase significantly as a result of the injury and metabolic response to the trauma caused by the surgery. However, very often high-risk patients are not able to increase their cardiac output and thus the oxygen delivery [2]. Therefore, those patients will more likely develop tissue hypoperfusion and severe systemic inflammatory response and death due to the organ dysfunction [3].

Surgical patients with a high risk for complications admitted to an ICU frequently die as a primary or secondary consequence of hypoperfusion-related organ dysfunction or severe infections [4, 5]. However, predictors of death caused by tissue hypoperfusion are still not studied very much in high-risk surgery patients. The [P(v-a)CO<sub>2</sub>] has been reversely correlated to cardiac output in surgical patients [6–8]. In a recent review, Lamia et al. [9] showed that PCO<sub>2</sub> gap is a blood flow marker to remove total CO<sub>2</sub> produced by

the peripheral tissue. Cuschieri et al. [10] have found a reverse correlation between  $[P(\text{cv-a})\text{CO}_2]$  and cardiac index with a central venous blood sample and suggested that, for this purpose, a sample of central venous blood could be used instead of blood from the pulmonary artery.

In the literature, we find only very few prospective clinical studies with surgical patients, which have evaluated the real impact from  $[P(\text{v-a})\text{CO}_2]$  as complications and death preoperative marker in this population. Therefore, the objective of this study was to evaluate the role of  $\text{PCO}_2$  gap as a predictor for complications and death in high-risk surgical patients.

## 2. Methods

The study was performed in a tertiary hospital. It was approved by the local Ethics and Research Committees, and a written postinformed consent was obtained from each patient or legal responsible. The study design was a post hoc analysis applying a cut point derived from the data, with the following inclusion criteria: (1) patients aged 18 years or older and (2) surgeries which required a central venous catheter in intraoperative and intensive care in postoperative phase. Patients were selected during the preanesthetic evaluation. High-risk surgeries were patients undergoing surgeries with requested ICU postoperative stay and at least one of the following:

- (i) severe cardiorespiratory comorbidities (coronary insufficiency, chronic obstructive pulmonary disease, previous stroke),
- (ii) surgery scheduled for neoplasm resection (esophagectomy, total gastrectomy) longer than 8 hours,
- (iii) above 70 years-old, with evidence of physiological reserve impairment involving at least one vital organ,
- (iv) acute renal failure (blood urea nitrogen  $> 100$  mg/dL or creatinine  $> 3$  mg/dL),
- (v) advanced vascular disease, or aortal involvement,
- (vi) massive acute intraoperative blood loss predicted,
- (vii) severe nutritional disorders patients.

Patients undergoing palliative surgery, with low life expectancy, liver failure (Child B or C), patients with a functional class IV heart failure or an echocardiogram-measured ejection fraction of less than 30%, and those who did not accept participating in the study were excluded. The patients with a functional class IV heart failure or ejection fraction of less than 30% could present flow alteration due to underlying disease, which is not related to surgery procedure.

At the time of the inclusion, the Multiple-Organ Dysfunction Syndrome (MODS) [11] and Acute Physiology And Chronic Health Evaluation (APACHE II) [12] scores were also evaluated by taking the worst values of their variables. An echocardiogram, which is an integral part of preoperative evaluation of high-risk surgical patients in our institution, was performed to measure the ejection fraction and the presence or absence of systolic or diastolic ventricular dysfunction, considering the increasingly clear literature data on their similarities regarding mortality and morbidity [13–16].

At the day of the surgery, patients were equipped with central venous (positioned with the tip within the superior vena cava) and arterial catheters. A chest X-ray confirmed central venous catheter position. Before anesthesia induction, in intraoperatively and postoperatively central venous and arterial blood samples were collected to measure  $[P(\text{v-a})\text{CO}_2]$ .

The surgical team decided on which therapy should be used during the intraoperative period. In the postoperative phase, the intensive care physician's goal was to improve the perfusion parameters according to standard in local institution; he had no knowledge about preoperative  $[P(\text{v-a})\text{CO}_2]$ .

The primary endpoint was hospital mortality; all patients were therefore monitored until they were discharged from hospital. The secondary endpoint was to check for the presence of an organ dysfunction, shock (need of vasoactive drugs for over 1 hour, despite volemic resuscitation), acute pulmonary dysfunction ( $\text{PaO}_2/\text{FiO}_2$  ratio  $< 200$ ), renal failure (increase of creatinine by 50% or urinary output of less than 400 mL in 24 hours), confusion (change in behavior, memory lapses, or psychomotor agitation), and platelet dysfunction (platelets reduced by 30% compared to the basal value) in up to 24 hours in the postoperative period. Diagnosis of postoperative infection was based on international consensus guidelines and/or use of antibiotic [17]. The infections incidence during ICU length of stay and the time of mechanical ventilation were verified, besides the hospital length of stay.

Based on the best  $[P(\text{v-a})\text{CO}_2]$  value which discriminated hospital mortality, the patients were allocated in two groups: narrow  $[P(\text{v-a})\text{CO}_2]$  (group 1) and wide  $[P(\text{v-a})\text{CO}_2]$  (group 2).

*2.1. Statistical Analysis.* Initially, we described the demographic, clinical, and physiological characteristics from patients that were included in the study. Frequencies were calculated to describe categorical variables. Quantitative variables were described by using measures of central tendency and dispersion.

The statistical method to be used in the assessment of each variable was chosen based on its distribution. Categorical variables were analyzed through the Chi-square test, and continuous variables through the mean with the Student's *t*-test for normal distribution and continuous variables with irregular distribution were analyzed by means of the Mann-Whitney Test. *P* values  $< 0.05$  (two-tailed) were considered significant. ROC curves were used to test the discrimination power of the groups in predicting clinical evolution (the capacity of correctly classifying survivors and nonsurvivors) and to determine the best cut-off value of tissue perfusion in connection with hospital mortality. SPSS 13.0 was used to analyze those calculations. Group 01 patients were compared to those of group 02. Box plots were created to compare survivors and nonsurvivors in  $[P(\text{v-a})\text{CO}_2]$  in different time points through Mann-Whitney test.

To determine the risk of hospital death we developed a multivariable Cox proportional hazard model in the population. Variables were included in the model if they reached

TABLE 1: Patient characteristics and comparison between patients with  $[P(v-a)CO_2] < 5.0$  and  $[P(v-a)CO_2] \geq 5.0$ .

Variables	All patients (n = 66)	$[P(v-a)CO_2] < 5.0$ mmHg (n = 22)	$[P(v-a)CO_2] \geq 5.0$ mmHg (n = 44)	P
Age	65.6 ± 12.2	64.6 ± 13.5	66.0 ± 11.7	0.67
Males (%)	56.1	50.0	59.1	0.48
APACHE II	16.9 ± 5.6	15.8 ± 5.1	17.4 ± 5.8	0.29
MODS	3 (1.0–4.0)	3.0 (1.0–4.0)	3.5 (1.0–4.5)	0.46
ASA (%)				0.65
I	6.6	9.5	5.0	
II	68.9	71.4	67.5	
III	24.6	19.0	27.5	
Elective surgery (%)	95.5	95.5	95.5	1.00
Emergency surgery (%)	4.5	4.5	4.5	1.00
Gastrointestinal surgery (%)	78.8	81.8	73.3	0.38
$[P(v-a)CO_2]$ (mmHg)	5.4 ± 2.0	3.3 ± 1.2	6.5 ± 1.4	0.00
Lactate (mmol/L)	1.5 ± 0.8	1.4 ± 0.6	1.6 ± 0.9	0.35
Base excess (mmol/L)	-0.7 (-3.0–0.6)	-1.6 (-3.4–0.7)	-0.5 (-2.4–0.6)	0.35
ScvO <sub>2</sub> (%)	74.1 ± 7.6	77.0 ± 6.2	72.7 ± 7.9	0.03
Ventricular dysfunction (%)	77.3	54.5	88.6	0.002
Ejection fraction (%)	63.7 ± 9.5	63.5 ± 9.9	63.9 ± 9.2	0.93
Hemoglobin (g/dL)	11.4 ± 1.7	11.3 ± 1.7	11.5 ± 1.7	0.70
Glucose (mg/dL)	120.0 ± 54.2	120.7 ± 61.7	120.3 ± 50.8	0.98

ScvO<sub>2</sub>-central venous oxygen saturation; ASA: American Society of Anesthesiologists; values between brackets represent the median and percentile 25–75%.

a significance level of  $P < 0.05$  in univariate analysis or were clinically relevant. Mortality estimative curve was created using the Cox method and compared by Cox regression.

### 3. Results

Over a period of 6 months, the study included 66 patients, of which 37 males and 29 females, with an average age of 65.6 years old. Elective surgeries were more frequent (Table 1).

During surgery, 50% of patients received blood transfusions, 32.5% vasoactive drugs, and 54.5% of them had complications, where circulatory shock was most prevalent (Table 2).

A ROC curve was created in order to establish the best  $[P(v-a)CO_2]$  value, which discriminated hospital mortality in this population, where  $[P(v-a)CO_2] = 5.0$  mmHg was the cut-off between narrow  $[P(v-a)CO_2]$  and wide  $[P(v-a)CO_2]$ , presenting sensitivity of 93.3% and specificity of 50.2%, ROC area of 0.73,  $P(\text{area} = 0.5) = 0.0006$ , 95% CI = 0.61 to 0.84 (Figure 1). Moreover, comparative ROC curves from lactate, BE and ScvO<sub>2</sub> can demonstrate that  $[P(v-a)CO_2]$  had the greatest AUC, respectively, 0.53 (0.41 to 0.67), 0.56 (0.43 to 0.69), and 0.71 (0.59 to 0.82).

A Box plot graphic has compared survivors and non survivors in pre-, intra-, and postoperatively; it could show that only the preoperatively period presented statistical significance between them (Figure 2).

Thus, when comparing the groups with narrow  $[P(v-a)CO_2]$  and wide  $[P(v-a)CO_2]$ , although they present the same pre- and intraoperative demographic and clinical data,

except for a lower ScvO<sub>2</sub> and a higher ventricular dysfunction in patients with  $[P(v-a)CO_2] \geq 5.0$  mmHg, we find that patients with  $[P(v-a)CO_2] \geq 5.0$  mmHg had a higher hospital mortality and a higher incidence of complications in the postoperative period, mainly circulatory shock, renal failure, and ICU infection. (Tables 1, 2, 3, and 4)

When patients with  $[P(v-a)CO_2] < 5.0$  mmHg and  $[P(v-a)CO_2] \geq 5.0$  mmHg were compared, the group with  $[P(v-a)CO_2] \geq 5.0$  mmHg had a lower survival probability, even when it was adjusted by MODS, ScvO<sub>2</sub>, ventricular dysfunction heart. HR = 2.07 IC95% 1.14–3.77 (Figure 3).

### 4. Discussion

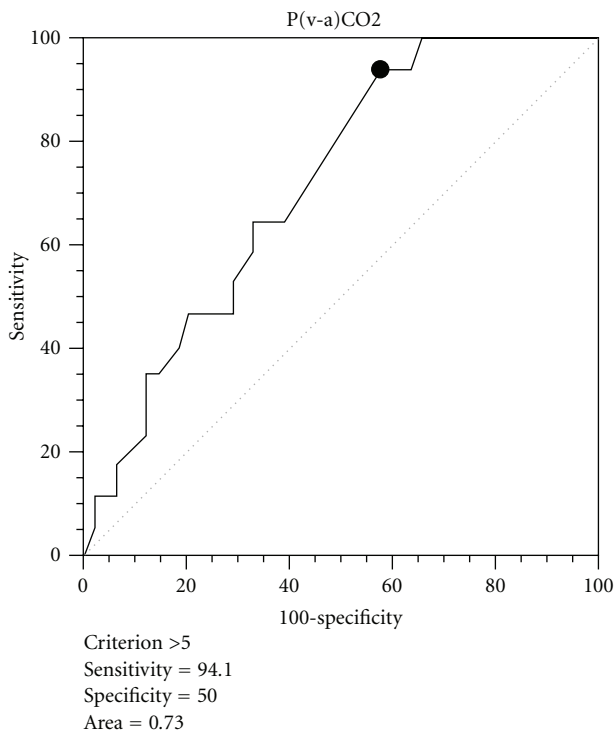
Despite the large quantity of resources that are directed towards assessing perioperative risk and of cardiovascular complications, this study shows that a simple analysis of PCO<sub>2</sub> gap  $\geq 5.0$  mmHg in the preoperative period is an important marker for postoperative complications, mainly shock, renal failure, infection, increased length hospital stay, and hospital mortality. Currently, few parameters are used at bed side to assess tissue hypoxia, such as urinary output, base differences, and blood lactate, but those parameters show that hypoperfusion is already installed and may be late to guide the onset of a hemodynamic resuscitation [18]. However, in this study,  $[P(v-a)CO_2]$  has proven to be an early parameter to identify worse outcome in surgery patients.

The worse outcome of these patients can be explained by previous reports that have suggested the PCO<sub>2</sub> gap as a marker for tissue hypoxia [19, 20]. In an animal model for

TABLE 2: Patient characteristics and comparison between patients with  $[P(v-a)CO_2] < 5.0$  and  $[P(v-a)CO_2] \geq 5.0$  in intraoperative.

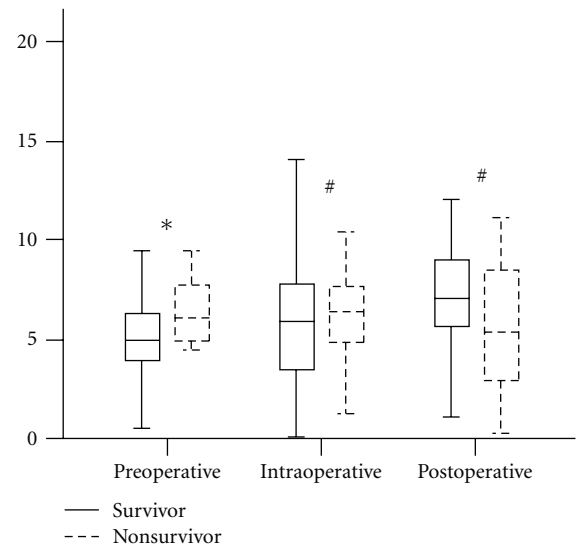
Variables	All patients (n = 66)	$[P(v-a)CO_2] < 5.0$ mmHg (n = 22)	$[P(v-a)CO_2] \geq 5.0$ mmHg (n = 44)	P
Transfusion (%)	50.0	40.9	54.5	0.29
Crystalloids (mL)	7000 (4625–8875)	5500 (4500–8650)	7000 (5500–8875)	0.44
Colloids (mL)	1000 (500–1000)	500 (500–1250)	1000 (500–1000)	0.26
Fluid balance (ml)	800 (175–1420)	400 (–250–875)	800 (262–1750)	0.13
Vasopressors (%)	32.5	23.5	40.5	0.27
Length of surgery (hours)	6.9 ± 2.4	7.0 ± 3.1	6.8 ± 1.9	0.83

Values between brackets represent the median and percentile 25–75%.

FIGURE 1: Roc curve from  $[P(v-a)CO_2]$  and hospital mortality.

acute hemorrhage, Van der Linden et al. [21] found a significant correlation between blood lactate and  $PCO_2$  gap. A progressive increase of  $[P(v-a)CO_2]$  was observed during the dependence period of oxygen consumption and delivery ( $VO_2/DO_2$ ) in another experimental model with progressive flow reduction [22]. High  $[P(v-a)CO_2]$  values have been reported during cardiac arrest and cardiopulmonary resuscitation [19, 23]. However, in all those studies, tissue hypoxia was secondary to the reduction of blood flow.

Circulatory failure is followed by tissue  $CO_2$  accumulation. Tissue  $CO_2$  increases as a consequence of an accumulation of the carbon dioxide produced by the aerobic metabolism and by the tissue bicarbonate buffer effect, which is necessary to correct the excess of hydrogen ions during the anaerobic metabolism. When the cell concentration of bicarbonate ion ( $HCO_3^-$ ) and hydrogen ion ( $H^+$ ) rises,  $HCO_3^-$  diffuses out of red blood cells into the plasma, but

FIGURE 2: Box plot between  $[P(v-a)CO_2]$  value from survivors and nonsurvivors (\* $P < 0.05$ ; # $P > 0.05$ ).

$H^+$  cannot diffuse easily because the cell membrane is relatively impermeable to cations. Some of  $H^+$  liberated are bound to hemoglobin (Hb). This reaction occurs because reduced Hb is a better acceptor of  $H^+$  than the oxygenated Hb. In the peripheral blood the loading of  $CO_2$  is facilitated by the presence of reduced Hb (Haldane effect) [9].

Low blood flow can result in tissue hypercapnia. Under anaerobic metabolism conditions, it is expected that the production of  $CO_2$  ( $VCO_2$ ) decreases less than the consumption of  $O_2$  ( $VO_2$ ). In other words, the  $VCO_2/VO_2$  ratio (respiratory quotient) should increase. According to the Fick equation, a low blood flow may result in an increase of  $[P(v-a)CO_2]$ , even without any additional production of  $CO_2$ . This can be explained by the  $CO_2$ -stagnation phenomenon [24] due to the slower microcirculation blood flow, which is larger than normal  $CO_2$  production; hypercapnia tends to be generated in the venous circulation.

Therefore,  $[P(v-a)CO_2]$  is proportional to  $CO_2$  production and inversely related to cardiac output (Fick equation). Anaerobic  $CO_2$  production occurs when tissue hypoxia is present, mainly to protect bicarbonate ions against excess protons, produced as a secondary consequence of adenosine triphosphate hydrolysis [25].

TABLE 3: Patient characteristics and comparison between patients with adequate  $[P(v-a)CO_2] < 5.0$  and  $[P(v-a)CO_2] \geq 5.0$  in postoperative.

Variables	All patients ( <i>n</i> = 66)	$[P(v-a)CO_2] < 5.0$ mmHg ( <i>n</i> = 22)	$[P(v-a)CO_2] \geq 5.0$ mmHg ( <i>n</i> = 44)	<i>P</i>
Transfusion (%)	18.2	18.2	18.2	1.00
Crystalloids (mL)	1900 (1000–2500)	1500 (1000–2875)	2000 (1000–2500)	0.77
Colloids (mL)	500 (500–875)	500 (500–750)	500 (500–1000)	1.00
Duration of mechanical ventilation (hours)	24 (12–24)	12 (12–24)	24 (12–30)	0.07

Values between brackets represent the median and percentile 25–75%.

TABLE 4: Outcomes.

Variables	All patients ( <i>n</i> = 66)	$[P(v-a)CO_2] < 5.0$ mmHg ( <i>n</i> = 22)	$[P(v-a)CO_2] \geq 5.0$ mmHg ( <i>n</i> = 44)	RR	<i>P</i>
Postoperative complications (%)	54.5	40.9	61.4	1.73	0.09
Shock	45.5	22.7	56.8	2.83	0.01
ARF	19.7	4.5	27.3	5.15	0.02
Platelet dysfunction	19.7	13.6	22.7	1.55	0.38
Infection	16.7	4.5	22.7	4.20	0.05
Acute pulmonary dysfunction	10.6	9.1	11.4	1.18	0.77
Confusional state	7.6	0.0	11.4	0.64	0.10
Length of ICU stay (days)	3.0 (2.0–4.0)	2.5 (1.0–4.0)	3.0 (2.0–4.5)		0.12
Hospital length of stay (days)	20.0 (12.5–27.5)	13.5 (9.0–25.0)	20.0 (14.0–30.0)		0.01
Hospital mortality (%)	25.8	4.5	36.4	2.10	0.004

ARF: acute renal failure; ICU: intensive care unit; values between brackets represent the median and percentile 25–75%; RR: relative risk.

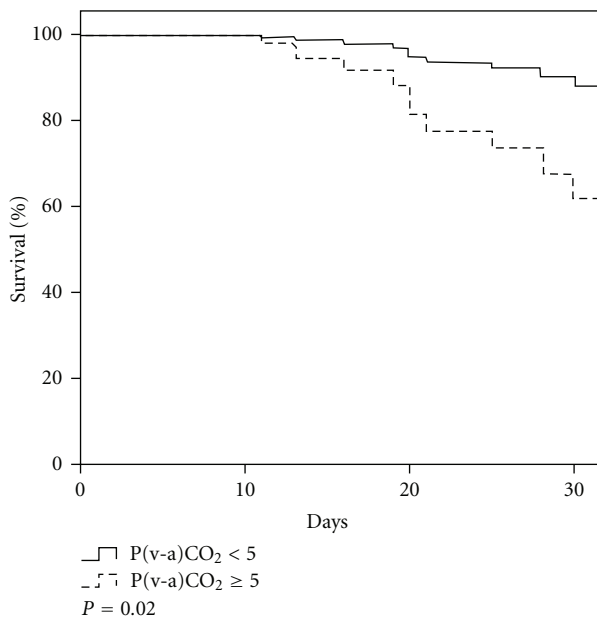


FIGURE 3: Kaplan Meier curve.

In this respect, an increased  $[P(v-a)CO_2]$  value has been reported in patients with low cardiac output and no global tissue hypoxia, as demonstrated by the normal lactate levels that were found [26]. This emphasizes the lack of specificity of  $[P(v-a)CO_2]$  in detecting tissue hypoxia. In this study,

we observed that even patients with inadequate  $[P(v-a)CO_2]$  values presented normal lactate or base difference values. Serum lactate has been traditionally accepted like an indicator of anaerobic metabolism and of tissue hypoxia, but it has to be emphasized that, under normal conditions, the liver is capable of increasing the metabolism of the produced lactate; this means that, in hypoxia and anaerobic metabolism situations, a few hours may elapse between the onset of the phenomenon and the detection of elevated lactate levels in the blood [27], which explains why the lactate may not be as early as of the  $[P(v-a)CO_2]$ .

Otherwise, a normal  $[P(v-a)CO_2]$  value may be associated with global tissue hypoxia in normal or hyperdynamic states, which was demonstrated by some authors [28]. This fact explains why an elevated venous flow is sufficient to clear the  $CO_2$  that is produced by the hypoxic cell, even if the production of  $CO_2$  is higher than normal due to the anaerobiosis that generates  $CO_2$  [24]. Indeed, Vallet and colleagues evidenced that  $PCO_2$  gap increased during low blood flow-induced tissue hypoxia (ischemic hypoxia) while it remained unchanged during hypoxemia-induced hypoxia (hypoxic hypoxia) [29]. We emphasize once again the poor sensitivity of  $[P(v-a)CO_2]$  to detect tissue hypoxia in some cases. However, in this study, patients with an inadequate  $[P(v-a)CO_2]$  had a lower  $ScvO_2$ , which may be explained by the fact that  $ScvO_2$  is influenced by different variables [30], such as low blood flow; this might be occurring with the sample in question. This hypothesis is substantiated by a higher percentage of ventricular dysfunction in this group.

The prevalence of ventricular dysfunction in this study was evaluated, considering both the systolic and diastolic ventricular dysfunction, since their evolution as for morbidity and mortality is similar [13–16]. A greater prevalence of ventricular dysfunction was found in the inadequate  $[P(v-a)CO_2]$  group. The EF—close to 65% in both groups—reflects a predominant diastolic dysfunction, which substantiates current data, which present diastolic dysfunction as a more relevant prognosis predictor than EF per se. [31–34].

However, Vallée et al. [35] found that a  $ScvO_2$  of over 70% in septic patients was not enough to reach adequate resuscitation, and that  $[P(v-a)CO_2] \geq 6.0$  mmHg could be helpful to identify patients that were not adequately resuscitated. Mekontso-Dessap et al. [24] demonstrated that, under conditions of tissue hypoperfusion, defined as a blood lactate level of  $>2.0$  mmol/L, a  $PvCO_2$ - $PaCO_2$ / $Ca-vO_2$  ratio of  $>1.4$  was the best predictor of hyperlactatemia and a good prognostic index.

Thus, it is important to detect early a risk factor for low oxygen delivery due to low blood flow evaluated by  $PCO_2$  gap  $\geq 5.0$  mmHg in surgery patients, because changes in clinical management may be made in order to avoid an unfavorable outcome in this population. Several clinical studies have documented that and aggressive early resuscitation using defined protocols improve the patient's outcome [36, 37]. These studies used therapy strategies to increase the cardiac function and keep organ perfusion, which reduced the ICU length of stay, accelerated the recovery of the gastrointestinal function, and reduced the mortality rate in high-risk surgery patients [38]. Therefore,  $[P(v-a)CO_2]$  could help identify patients that require such optimizations in the preoperative phase and specific measures taken in the preoperative or intraoperative period to ensure that the increase of blood flow could bring benefits to the postoperative period and improve the prognosis.

However, in this study, the  $[P(v-a)CO_2]$  value that best discriminated mortality was lower than of those described previously in the literature. This can be probably explained by the fact that those studies discussed more severe patients with septic conditions that required high oxygen delivery, contrary to what was shown in the study in question, since their patients were in the preoperative period of elective surgeries, with low APACHE II values, most of them in ASA II physical condition. In addition, values of the inadequate  $[P(v-a)CO_2]$  found in this evaluation may eventually mean that the patients were not well enough to undergo major surgeries, but tolerable for basal activities, which are not comparable to the stress experienced in a surgical procedure.

Another aspect that has to be discussed is related to the fact that inadequate  $[P(v-a)CO_2]$  was found only in the preoperative and not in the intraoperative phase; it is important to highlight that in the intraoperative period some variables may interfere in the measurement of  $[P(v-a)CO_2]$ , such as the anesthesia and hypothermia that might occur during surgery; they may reduce cell respiration and, thus,  $CO_2$  production. Hypothermia reduces metabolism by 7% per grade, with reduction of ATP formation and reduction of cellular oxygen and cerebral glucose requirements, in addition, decrease in  $CO_2$  production and  $O_2$  consumption [39].

Other aspects can bring impact to change in  $[P(v-a)CO_2]$ , due to  $CO_2$  dissociation curve, which is curvilinear more than oxygen dissociation curve, and temperature, hematocrit, oxygen saturation, and pH influence the  $PCO_2/CO_2$  content relationship an example is showed when metabolic acidosis worsens; the relationship is shifted to the right; it means that the same  $CO_2$  content value can determinate superior  $PCO_2$  value [9].

Besides, although in most studies that evaluated  $[P(v-a)CO_2]$  patients were monitored by means of a pulmonary artery catheter [24], absence of this tool in this study does not limit the results that were found. By the other hand, the gastric tonometry has also been utilized as carbon dioxide monitoring [40], but this method assesses the regional tissue dysoxia, differently of the proposal from present study which has aimed to measure the systemically problem. Therefore, since the study's objective does not require the measures that are evaluated by these devices, this way can be cheaper.

The complications, except infection, were evaluated in 24 hours only, which makes a limitation, but the length of ICU stay of all patients was short, that is, median 3.0 days.

The sample sizes as well as the observational character of this study are limiting factors. Future researches are needed to validate this finding.

Therefore, patients who underwent major surgeries and that—in the preoperative period—presented a  $PCO_2$  gap  $\geq 5$  mmHg had a worse prognosis in the postoperative. This marker may turn out to be important to stratify risk and suggests a useful additional tool for perioperative management.

## Conflict of Interests

The authors declare that there is no conflict of interests.

## Authors' Contribution

J. M. S. Jr. conceived of this study, participated in the design of the study, performed the statistical analysis, and drafted the paper. A. M. R. R. Oliveira participated in the design of the study, performed the collection of data and the statistical analysis, and drafted the paper. J. L. Segura, M. H. Ribeiro, and C. N. Sposito performed the collection of data. D. O. Toledo, E. Rezende, and L. M. S. Malbouisson helped in revising of the draft, the paper and helped in the final revision of writing the paper. All authors read and approved the final paper.

## References

- [1] S. Jhanji, B. Thomas, A. Ely, D. Watson, C. J. Hinds, and R. M. Pearse, "Mortality and utilisation of critical care resources amongst high-risk surgical patients in a large NHS trust," *Anaesthesia*, vol. 63, no. 7, pp. 695–700, 2008.
- [2] W. C. Shoemaker, P. L. Appel, H. B. Kram, K. Waxman, and T. S. Lee, "Prospective trial of supranormal values of survivors as therapeutic goals in high-risk surgical patients," *Chest*, vol. 94, no. 6, pp. 1176–1186, 1988.
- [3] P. Older, R. Smith, P. Courtney, and R. Hone, "Preoperative evaluation of cardiac failure and ischemia in elderly patients

- by cardiopulmonary exercise testing," *Chest*, vol. 104, no. 3, pp. 701–704, 1993.
- [4] V. D. Mayr, M. W. Dünser, V. Greil et al., "Causes of death and determinants of outcome in critically ill patients," *Critical Care*, vol. 10, no. 6, 154, 2006.
  - [5] D. D. Tran, A. B. Groeneveld, J. van der Meulen, J. J. Nauta, R. J. S. van Schijndel, and L. G. Thijs, "Age, chronic disease, sepsis, organ system failure, and mortality in a medical intensive care unit," *Critical Care Medicine*, vol. 18, no. 5, pp. 474–479, 1990.
  - [6] A. B. Groeneveld, C. G. Vermeij, and L. G. Thijs, "Arterial and mixed venous blood acid-base balance during hypoperfusion with incremental positive end-expiratory pressure in the pig," *Anesthesia and Analgesia*, vol. 73, no. 5, pp. 576–582, 1991.
  - [7] R. Durkin, M. A. Gergits, J. F. Reed III, and J. Fitzgibbons, "The relationship between the arteriovenous carbon dioxide gradient and cardiac index," *Journal of Critical Care*, vol. 8, no. 4, pp. 217–221, 1993.
  - [8] L. S. Brandi, F. Giunta, M. Pieri, A. M. Sironi, and T. Mazzanti, "Venous-arterial PCO<sub>2</sub> and pH gradients in acutely ill postsurgical patients," *Minerva Anestesiologica*, vol. 61, no. 9, pp. 345–350, 1995.
  - [9] B. Lamia, X. Monnet, and J. L. Teboul, "Meaning of arteriovenous PCO<sub>2</sub> difference in circulatory shock," *Minerva Anestesiologica*, vol. 72, no. 6, pp. 597–604, 2006.
  - [10] J. Cuschieri, E. P. Rivers, M. W. Donnino et al., "Central venous-arterial carbon dioxide difference as an indicator of cardiac index," *Intensive Care Medicine*, vol. 31, no. 6, pp. 818–822, 2005.
  - [11] J. C. Marshall, D. J. Cook, N. V. Christou, G. R. Bernard, C. L. Sprung, and W. J. Sibbald, "Multiple organ dysfunction score: a reliable descriptor of a complex clinical outcome," *Critical Care Medicine*, vol. 23, no. 10, pp. 1638–1652, 1995.
  - [12] W. A. Knaus, E. A. Draper, D. P. Wagner, and J. E. Zimmerman, "APACHE II: a severity of disease classification system," *Critical Care Medicine*, vol. 13, no. 10, pp. 818–829, 1985.
  - [13] H. Tsutsui, M. Tsuchihashi-Makaya, and S. Kinugawa, "Clinical characteristics and outcomes of heart failure with preserved ejection fraction: lessons from epidemiological studies," *Journal of Cardiology*, vol. 55, no. 1, pp. 13–22, 2010.
  - [14] R. S. Bhatia, J. V. Tu, D. S. Lee et al., "Outcome of heart failure with preserved ejection fraction in a population-based study," *New England Journal of Medicine*, vol. 355, no. 3, pp. 260–269, 2006.
  - [15] G. C. Fonarow, W. G. Stough, W. T. Abraham et al., "Characteristics, treatments, and outcomes of patients with preserved systolic function hospitalized for heart failure: a report from the OPTIMIZE-HF registry," *Journal of the American College of Cardiology*, vol. 50, no. 8, pp. 768–777, 2007.
  - [16] M. Tsuchihashi-Makaya, S. Hamaguchi, S. Kinugawa et al., "Characteristics and outcomes of hospitalized patients with heart failure and reduced vs preserved ejection fraction. Report from the Japanese cardiac registry of heart failure in cardiology (JCARE-CARD)," *Circulation Journal*, vol. 73, no. 10, pp. 1893–1900, 2009.
  - [17] M. M. Levy, M. P. Fink, J. C. Marshall et al., "2001 SCCM/ESICM/ACCP/ATS/SIS international sepsis definitions conference," *Critical Care Medicine*, vol. 31, no. 4, pp. 1250–1256, 2003.
  - [18] E. Rezende, J. M. Silva Jr., A. M. Isola, E. V. Campos, C. P. Amendola, and S. L. Almeida, "Epidemiology of severe sepsis in the emergency department and difficulties in the initial assistance," *Clinics*, vol. 63, no. 4, pp. 457–464, 2008.
  - [19] M. H. Weil, E. C. Rackow, R. Trevino, W. Grundler, J. L. Falk, and M. I. Griffel, "Difference in acid-base state between venous and arterial blood during cardiopulmonary resuscitation," *New England Journal of Medicine*, vol. 315, no. 3, pp. 153–156, 1986.
  - [20] B. A. Johnson and M. H. Weil, "Redefining ischemia due to circulatory failure as dual defects of oxygen deficits and of carbon dioxide excesses," *Critical Care Medicine*, vol. 19, no. 11, pp. 1432–1438, 1991.
  - [21] P. van der Linden, I. Rausin, A. Deltell et al., "Detection of tissue hypoxia by arteriovenous gradient for PCO<sub>2</sub> and pH in anesthetized dogs during progressive hemorrhage," *Anesthesia and Analgesia*, vol. 80, no. 2, pp. 269–275, 1995.
  - [22] H. Zhang and J. L. Vincent, "Arteriovenous differences in PCO<sub>2</sub> and pH are good indicators of critical hypoperfusion," *American Review of Respiratory Disease*, vol. 148, no. 4, pp. 867–871, 1993.
  - [23] H. J. Adroque, M. N. Rashad, A. B. Gorin, J. Yacoub, and N. E. Madias, "Assessing acid-base status in circulatory failure. Differences between arterial and central venous blood," *New England Journal of Medicine*, vol. 320, no. 20, pp. 1312–1316, 1989.
  - [24] A. Mekontso-Dessap, V. Castelain, N. Anguel et al., "Combination of venoarterial PCO<sub>2</sub> difference with arteriovenous O<sub>2</sub> content difference to detect anaerobic metabolism in patients," *Intensive Care Medicine*, vol. 28, no. 3, pp. 272–277, 2002.
  - [25] H. M. Randall Jr. and J. J. Cohen, "Anaerobic CO<sub>2</sub> production by dog kidney in vitro," *The American Journal of Physiology*, vol. 211, no. 2, pp. 493–505, 1966.
  - [26] J. L. Teboul, A. Mercat, F. Lenique, C. Berton, and C. Richard, "Value of the venous-arterial Pco<sub>2</sub> gradient to reflect the oxygen supply to demand in humans: effects of dobutamine," *Critical Care Medicine*, vol. 26, no. 6, pp. 1007–1010, 1998.
  - [27] H. B. Nguyen, E. P. Rivers, B. P. Knoblich et al., "Early lactate clearance is associated with improved outcome in severe sepsis and septic shock," *Critical Care Medicine*, vol. 32, no. 8, pp. 1637–1642, 2004.
  - [28] J. Bakker, J. L. Vincent, P. Gris, M. Leon, M. Coffernils, and R. J. Kahn, "Veno-arterial carbon dioxide gradient in human septic shock," *Chest*, vol. 101, no. 2, pp. 509–515, 1992.
  - [29] B. Vallet, J. L. Teboul, S. Cain, and S. Curtis, "Venoarterial CO<sub>2</sub> difference during regional ischemic or hypoxic hypoxia," *Journal of Applied Physiology*, vol. 89, no. 4, pp. 1317–1321, 2000.
  - [30] J. M. Silva Jr., D. O. Toledo, D. D. Magalhães et al., "Influence of tissue perfusion on the outcome of surgical patients who need blood transfusion," *Journal of Critical Care*, vol. 24, no. 3, pp. 426–434, 2009.
  - [31] W. C. Little and J. K. Oh, "Echocardiographic evaluation of diastolic function can be used to guide clinical care," *Circulation*, vol. 120, no. 9, pp. 802–809, 2009.
  - [32] S. F. Nagueh, C. P. Appleton, T. C. Gillebert et al., "Recommendations for the evaluation of left ventricular diastolic function by echocardiography," *Journal of the American Society of Echocardiography*, vol. 22, no. 2, pp. 107–133, 2009.
  - [33] S. Brucks, W. C. Little, T. Chao et al., "Relation of anemia to diastolic heart failure and the effect on outcome," *American Journal of Cardiology*, vol. 93, no. 8, pp. 1055–1057, 2004.
  - [34] D. J. Sturgess, T. H. Marwick, C. Joyce et al., "Prediction of hospital outcome in septic shock: a prospective comparison of tissue Doppler and cardiac biomarkers," *Critical Care*, vol. 14, no. 2, p. R44, 2010.
  - [35] F. Vallée, B. Vallet, O. Mathe et al., "Central venous-to-arterial carbon dioxide difference: an additional target for goal-directed therapy in septic shock?" *Intensive Care Medicine*, vol. 34, no. 12, pp. 2218–2225, 2008.

- [36] E. Fenwick, J. Wilson, M. Sculpher, and K. Claxton, "Pre-operative optimisation employing dopexamine or adrenaline for patients undergoing major elective surgery: a cost-effectiveness analysis," *Intensive Care Medicine*, vol. 28, no. 5, pp. 599–608, 2002.
- [37] M. G. Mythen and A. R. Webb, "Perioperative plasma volume expansion reduces the incidence of gut mucosal hypoperfusion during cardiac surgery," *Archives of Surgery*, vol. 130, no. 4, pp. 423–429, 1995.
- [38] J. W. Kern and W. C. Shoemaker, "Meta-analysis of hemodynamic optimization in high-risk patients," *Critical Care Medicine*, vol. 30, no. 8, pp. 1686–1692, 2002.
- [39] H. Aslami and N. P. Juffermans, "Induction of a hypometabolic state during critical illness—a new concept in the ICU?" *Netherlands Journal of Medicine*, vol. 68, no. 5, pp. 190–198, 2010.
- [40] P. E. Marik, "Regional carbon dioxide monitoring to assess the adequacy of tissue perfusion," *Current Opinion in Critical Care*, vol. 11, no. 3, pp. 245–251, 2005.