



Clinical characteristics of patients with *ROS1* gene rearrangement in non-small cell lung cancer: a meta-analysis

Huanhuan Bi, Dunqiang Ren, Xiaoqian Ding, Xiaojiao Yin, Shichao Cui, Caihong Guo, Hongmei Wang

Department of Respiratory and Critical Care Medicine, the Affiliated Hospital of Qingdao University, Qingdao 266000, China

Contributions: (I) Conception and design: H Wang; (II) Administrative support: H Wang; (III) Provision of study materials or patients: H Bi, D Ren; (IV) Collection and assembly of data: H Bi, D Ren, H Wang; (V) Data analysis and interpretation: H Bi, X Ding, X Yin, S Cui, C Guo; (VI) Manuscript writing: All authors; (VII) Final approval of manuscript: All authors.

Correspondence to: Hongmei Wang. Department of Respiratory and Critical Care Medicine, the Affiliated Hospital of Qingdao University, Qingdao 266000, China. Email: dor.whm@163.com.

Background: *ROS1* gene rearrangement has been reported in several types of cancers, including non-small cell lung cancer (NSCLC). It is reported that tyrosine kinase inhibitors are effective in the treatment of *ROS1*-rearranged NSCLC. Therefore, the identification of *ROS1* rearrangement can be used as potential therapeutic target in lung cancer. Epidemiological data indicates that *ROS1* gene rearrangement occurs in approximately 1–2% of NSCLC patients. The small sample sizes of the existing associated studies only represent the characteristics of patients in specific regions or countries, and there is still no latest statistical analysis on *ROS1* gene rearrangement anywhere in the world.

Methods: We conducted a systematic search of the PubMed, Embase, Cochrane Central Register of Controlled Trials (CENTRAL), CBM, CNKI, Wanfang, and VIP databases to identify studies on *ROS1* gene rearrangement in NSCLC patients from January 1, 2015 to October 27, 2019. We conducted a meta-analysis to investigate the relationship between *ROS1* gene rearrangement and clinical characteristics of NSCLC patients. The four clinical features are as follows: gender, smoking status, pathological type, and lung cancer stage.

Results: Thirty-nine studies constituting of 25,055 NSCLC patients were eligible for inclusion in this meta-analysis. A prominently higher rate of *ROS1* gene rearrangement was observed in female NSCLC patients (OR =1.94, 95% CI: 1.62–2.32%, $P<0.05$), patients with no smoking history (OR =2.82, 95% CI: 2.24–3.55%, $P<0.05$), patients with adenocarcinoma (OR =1.55, 95% CI: 1.14–2.11%, $P<0.05$), and patients with stage III–IV disease (OR =1.50, 95% CI: 1.15–1.94%, $P<0.05$). Our meta-analysis also showed that the prevalence of *ROS1* rearrangement in adenocarcinoma was 2.49% (95% CI: 1.92–3.11%), while it was lower in non-adenocarcinoma patients (1.37%).

Conclusions: *ROS1* gene rearrangement was more predominant in female patients, patients without smoking history, patients with adenocarcinoma and patients with advanced-stage disease (stages III to IV).

Keywords: *ROS1*; clinicopathologic features; non-small cell lung cancer (NSCLC); meta-analysis

Submitted Mar 07, 2020. Accepted for publication May 26, 2020.

doi: 10.21037/tcr-20-1813

View this article at: <http://dx.doi.org/10.21037/tcr-20-1813>

Introduction

Non-small cell lung cancer (NSCLC) accounts for 85% of all lung cancer cases (1). The majority of NSCLC patients are locally advanced or metastatic at the time of diagnosis

which leads to a dire overall prognosis (2). In the past decade, the clinical application of targeted therapy and immunotherapy has broken the traditional single-treatment model of lung cancer, and the 5-year survival rate has risen to 15.5% (3).

In the age of precision medicine, molecular detection has become an extremely important way of identifying the type of gene mutations in lung cancer. In normal lung tissue, *ROS1*, a receptor tyrosine kinase (RTK), is usually expressed at low levels (4). The *ROS1* gene was first discovered in 1986 in ornithion sarcoma virus (UR2), which has a unique carcinogenic gene sequence (5). The *ROS1* gene is located in the q12 region of chromosome 6, encoding 2,347 amino acids with a molecular weight of 259 kDa (6,7). In 1987, *FIG-ROS1* fusion gene was first discovered in pleomorphic glioblastoma cell line U118MG (8). In fact, the expression of *ROS1* fusion *in vitro* and *in vivo* can lead to carcinogenic transformation (9,10). *ROS1* gene fusion of *LC34A2-ROS1* and *CD74-ROS1* were first identified in lung adenocarcinoma in 2007 (11). Subsequently, various fusion partners of *ROS1* were discovered, including *SLC34A1*, *EZR*, *SDC4*, *FIG*, *TPM3*, *LRIG3* and *CCDC6* (12). *ROS1* gene fusions with carcinogenic potential have been recognized for their involvement with the activation of the *ROS1* signaling pathway. Although the mechanism of how *ROS1* fusion protein is activated is still unclear, however, the PIK/AKT, MAPK/ERK, and JAK/STAT3 signaling pathways are known to be related (13). *ROS1* bears some resemblance to the *ALK* (14); therefore, *ALK* inhibitor crizotinib is regarded as the first-line therapy for *ROS1*-rearranged patients (15). These promising results emphasize the necessity of investigating *ROS1* gene rearrangement in patients with NSCLC. Because the probability of *ROS1* gene rearrangement is low, and most of the sample sizes are small to medium, it is not enough to fully represent the current state of *ROS1* gene rearrangement mutation. In addition, we present the following article in accordance with the PRISMA reporting checklist (<http://dx.doi.org/10.21037/tcr-20-1813>).

Methods

Literature search

We performed our meta-analysis according to the Preferred Reporting Items for Systematic Reviews and Meta-Analyses (PRISMA) guidelines (16). Articles from between January 1, 2015 and October 27, 2019, were systematically retrieved from the PubMed, Embase, Cochrane Central Register of Controlled Trials (CENTRAL), CBM, CNKI, Wanfang, and VIP databases. Search terms were retrieved as title/abstract by MESH subject word and customary terminology, the final retrieval strategy is formulated after

several pre-searches, and the search records are output to Endnote. The search term is Carcinoma, Non-Small-Cell Lung/Carcinomas, Non-Small-Cell Lung/Lung Carcinoma, Non-Small-Cell/Lung Carcinomas, Non-Small-Cell/Non-Small-Cell Lung Carcinomas/Nonsmall Cell Lung Cancer/Non-Small-Cell Lung Carcinoma/Non Small Cell Lung Carcinoma/Carcinoma, Non-Small Cell Lung/Non-Small Cell Lung Cancer/non-small cell lung cancer/NSCLC/lung neoplasm/lung cancer/lung carcinoma/pulmonary neoplasm/pulmonary cancer/pulmonary carcinoma; *ROS1*/ROS-1/c-ros protein/Ros1 proto-oncogene protein/Ros-1 protein". No language limits were applied. Take PubMed as an example, the retrieval strategy was as follows: #1 Search "Carcinoma, Non-Small-Cell Lung"[Mesh] OR (((((((((((((((Carcinomas, Non-Small-Cell Lung[Title/Abstract]) OR Lung Carcinoma, Non-Small-Cell[Title/Abstract]) OR Lung Carcinomas, Non-Small-Cell[Title/Abstract]) OR Non-Small-Cell Lung Carcinomas[Title/Abstract]) OR Nonsmall Cell Lung Cancer[Title/Abstract]) OR Non-Small-Cell Lung Carcinoma[Title/Abstract]) OR Non Small Cell Lung Carcinoma[Title/Abstract]) OR Carcinoma, Non-Small Cell Lung[Title/Abstract]) OR Non-Small Cell Lung Cancer[Title/Abstract]) OR non-small cell lung cancer[Title/Abstract]) OR NSCLC[Title/Abstract]) OR lung neoplasm[Title/Abstract]) OR lung cancer[Title/Abstract]) OR lung carcinoma[Title/Abstract]) OR pulmonary neoplasm) OR pulmonary cancer) OR pulmonary carcinoma), #2 Search ((((*ROS1*[Title/Abstract]) OR ROS-1[Title/Abstract]) OR c-ros protein[Title/Abstract]) OR Ros1 proto-oncogene protein[Title/Abstract]) OR Ros-1 protein[Title/Abstract, #3 ("2015/01/01"[Date-Publication]: "2019/10/27"[Date-Publication]), #4 Search #1 AND #2 AND #3.

Study selection

Two independent investigators separately screened the study selection against the inclusion criteria. The differences between the two investigators were settled by negotiation. If necessary, we try to contact the author of the original article for accurate information. The inclusion criteria for articles were as follows: (I) involved NSCLC patients, regardless of pathology type; (II) *ROS1* gene rearrangement was involved; (III) included the clinical characteristics of patients with *ROS1* gene rearrangement, e.g., gender, smoking status, pathological type and clinical stage; and (IV) included the number of *ROS1* gene rearranged patients and

their specific clinical characteristics. Articles that met any of the following criteria were excluded: (I) case reports, reviews, guidelines, or correspondence; (II) containing no highly relevant information, non-original articles; (III) lacking sufficient data to calculate odds ratios (ORs) and 95% confidence intervals (CIs).

Data collection and quality assessment

Data from the eligible studies were extracted by two independent researchers. During the data extraction period, in order to reduce the offset and error probability, the two researchers exchanged the original data tables for checking. If a dispute arises, the third researcher shall conduct arbitration. The information we collected is as follows: the first author's name, year of publication, country of the study, total number of patients, race, age (range), detection technique for the *ROS1* gene rearrangement, number of *ROS1*-rearranged patients, and tumor pathological type.

The quality assessment of the studies included was assessed using an 11 items checklist which was recommended by Agency for Healthcare Research and Quality (AHRQ). If an item was selected "NO" or "UNCLEAR" as answer, the score for "0"; If an item was selected "YES" as answer, then the items' score for "1". Article quality was assessed as follows: low quality =0–3; moderate quality =4–7; high quality =8–11. This group into the article 10 articles belongs to high quality articles, article 29 belongs to medium quality articles. From the results of quality evaluation, the original research is reliable. The data sources and inclusion exclusion criteria of all the included cross-sectional studies are explicit, which makes the confounding factors under reasonable control. In addition, some studies provided the response rate and follow-up results. The specific quality score results are shown in *Table 1*.

Statistical analysis

The relationship between *ROS1* gene rearrangement and four clinical characteristics was studied in NSCLC patients. The four clinical characteristics were: gender, smoking status, pathological type, and clinical stage. Heterogeneity was tested by I^2 statistic and χ^2 -based Q test (56). With I^2 higher than 50% or P value of Q statistic's test under 0.10 showing significant heterogeneity significant (57). If the heterogeneity was reduced to a mild degree after the source had been identified, then a fixed effects model was applied. If the heterogeneity was still obvious, then a random effects

model was adopted to pool effect sizes of ORs and their corresponding 95% CIs (58). Because I^2 was not an absolute measure of heterogeneity (59), sensitivity analysis was also carried out to rule out the possibility that heterogeneity among studies could be offset. We observed whether the OR value of each study was located near the aggregate OR value of the total effect quantity and decided whether to delete some articles. Quantitative evaluation of publication bias by Begg's funnel plot and Egger's test, $P \leq 0.05$ show that publication bias has statistical significance. If the number of studies included is less than 10, the stability of the conclusions will be further evaluated after the publication bias is eliminated by trim-fill method.

Review Manager 5.3 (Computer Program, Copenhagen, The Nordic Cochrane Centre, The Cochrane Collaboration, 2014) was used to create a forest plot. However, figure 10 is generated using STATA software. Sensitivity analysis and publication bias were conducted using STATA version 15.0 software (STATA Corporation, College Station, TX, USA). GraphPad Prism 8 (GraphPad software, San Diego, CA, USA) was used to produce a flow chart.

Results

Study selection and characteristics

The flow chart of the literature selection process is exhibited in *Figure 1*. Our systematic search generated 2,619 studies, of which 2,580 studies were duplications, case reports, reviews, guidelines, or correspondence, etc. Finally, 39 studies involving 25,055. This meta-analysis included 39 studies that described the clinical characteristics of patients with *ROS1* gene rearrangement. Due to the high expression of *ROS1*, in alveolar type II lung cells, macrophages, and osteoclasts during bone metastasis, which may lead to an increase in false positive rate, when used alone in the immunohistochemical (IHC) method to determine the results of *ROS1* gene rearrangement (60). Only the results of *ROS1* gene rearrangement by immunohistochemical method were excluded. The specific screening results are shown in *Table 1*.

Relationship between *ROS1* gene rearrangement and gender in NSCLC patients

Thirty-five studies in the analysis discussed the correlation between *ROS1*-rearranged patients and gender. These studies involved a total of 8,440 male patients and 12,506

Table 1 Characteristics of included studies

Study/first author	Year	Country	Race	No. of patients	Age [range]	ROS1(+)	Detection methods	Tumor type	Quality score
Bai <i>et al.</i> (17)	2019	China	Asian	379	60 [19–89]	12	PCR	NSCLC	6
Bu <i>et al.</i> (18)	2017	China	Asian	1875	NA	11	FISH	NSCLC	8
Chen <i>et al.</i> (19)	2019	China	Asian	89	32 [18–35]	1	RT-PCR	Ade	8
Chen <i>et al.</i> (20)	2019	China	Asian	205	57 [38–82]	5	RT-PCR	NSCLC	6
Clavé <i>et al.</i> (21)	2016	USA	Caucasian	314	64 [25–91]	5	FISH	Ade	6
Dugay <i>et al.</i> (22)	2017	France	Caucasian	71	65.6±10.7	15	FISH	NSCLC	6
Fu <i>et al.</i> (23)	2015	China	Asian	204	NA	4	FISH	Ade	8
Gao <i>et al.</i> (24)	2018	China	Asian	356	NA	15	FISH PCR	NSCLC	6
Ha <i>et al.</i> (25)	2015	Korea	Asian	198	60 [29–81]	2	PCR	Ade	6
He <i>et al.</i> (26)	2019	China	Asian	347	62 [26–86]	6	RT-PCR	NSCLC	6
Huang <i>et al.</i> (27)	2019	China	Asian	300	NA	5	NGS	NSCLC	6
Jiang <i>et al.</i> (28)	2017	China	Asian	297	NA	3	IHC/FISH	NSCLC	6
Joshi <i>et al.</i> (29)	2019	India	Asian	535	60 [16–84]	22	FISH	NSCLC	8
Jurmeister <i>et al.</i> (30)	2015	Germany	Caucasian	473	54 [29–75]	4	FISH	NSCLC	6
Kuang <i>et al.</i> (31)	2019	China	Asian	113	NA	4	NGS	NSCLC	6
Lee <i>et al.</i> (32)	2018	Korea	Asian	407	66.9±12.1	14	IHC/FISH	NSCLC	6
Li <i>et al.</i> (33)	2017	China	Asian	76	61 [33–85]	1	PCR	NSCLC	6
Li <i>et al.</i> (34)	2018	China	Asian	116	51 [28–86]	5	RT-PCR	NSCLC	6
Li <i>et al.</i> (35)	2018	China	Asian	162	NA	20	RT-PCR	NSCLC	8
Liang <i>et al.</i> (36)	2016	China	Asian	332	59 [32–77]	13	FISH	Ade	6
Liu <i>et al.</i> (37)	2015	China	Asian	369	59 [27–84]	16	RT-PCR	Ade	6
Liu <i>et al.</i> (38)	2018	China	Asian	139	NA	1	RT-PCR	NSCLC	6
Mazieres <i>et al.</i> (39)	2019	France	Mixed	551	60 [29–83]	7	PCR/NGS	NSCLC	8
Plodkowsk <i>et al.</i> (40)	2015	USA	Caucasian	73	61 [36–89]	17	FISH	Ade	6
Qiao <i>et al.</i> (41)	2017	China	Asian	514	60 [30–85]	5	PCR	NSCLC	6
Rogers <i>et al.</i> (42)	2015	Australia	Caucasian	362	73 [36–97]	3	FISH	Ade	6
Song <i>et al.</i> (43)	2017	China	Asian	385	58	58	FISH	NSCLC	8
Vlajnic <i>et al.</i> (44)	2018	Australia	Caucasian	295	70 [30–100]	13	FISH	NSCLC	8
Wang <i>et al.</i> (45)	2015	China	Asian	41	26.4±3.5	2	PCR	NSCLC	8
Wang <i>et al.</i> (46)	2017	China	Asian	172	59 [26–80]	3	FISH PCR	Ade	6
Wu <i>et al.</i> (47)	2015	China	Asian	127	61 [26–82]	5	FISH	Ade	8
Wu <i>et al.</i> (48)	2016	China	Asian	238	61 [27–85]	10	FISH	NSCLC	6
Yang <i>et al.</i> (49)	2017	China	Asian	86	55 [33–85]	2	RT-PCR	NSCLC	6
Yang <i>et al.</i> (50)	2019	China	Asian	3,487	55 [24–85]	55	RT-PCR	NSCLC	6
Zhang <i>et al.</i> (51)	2016	China	Asian	280	60 [31–87]	5	PCR	Ade	6
Zhang <i>et al.</i> (52)	2018	China	Asian	3,345	NA	90	RT-PCR	NSCLC	8
Zhang <i>et al.</i> (53)	2019	China	Asian	6,066	60.1±10.6	157	RT-PCR	NSCLC	6
Song <i>et al.</i> (54)	2017	China	Asian	732	60 [28–81]	32	RT-PCR	Ade	8
Zhong <i>et al.</i> (55)	2015	China	Asian	302	60 [19–82]	12	PCR	NSCLC	6

ROS1(+), *ROS1* rearrangement positive; RT-PCR, reverse transcriptase PCR; FISH, fluorescence in situ hybridization; IHC, immunohistochemistry; NSCLC, non-small cell lung cancer; NGS, next generation sequencing; Ade, adenocarcinoma.

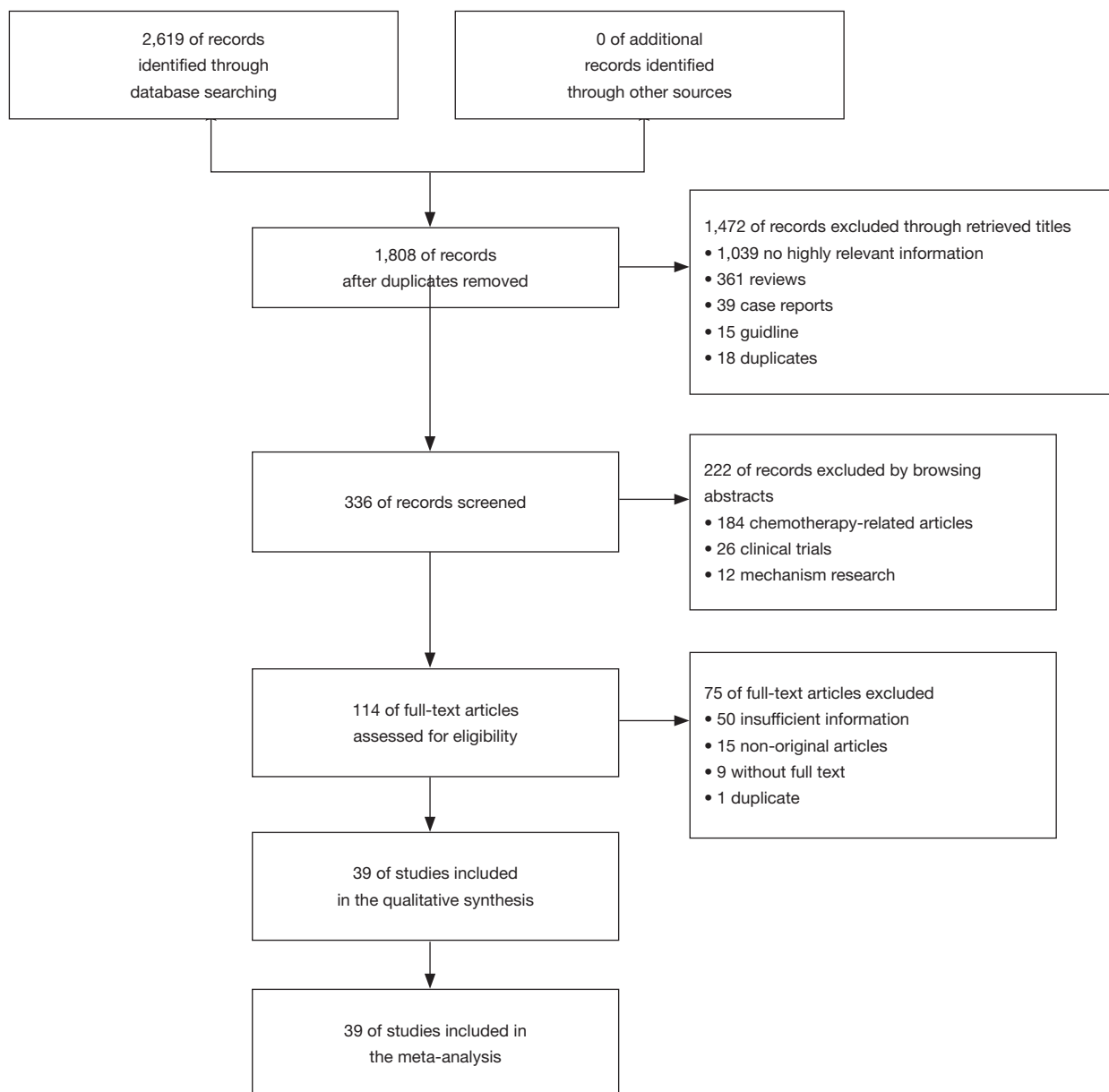


Figure 1 Flow chart of the study selection for the meta-analysis.

female patients, and *ROS1* gene rearrangement was observed in 288 females (3.41%, 288/8,440) and 217 males (1.73%, 217/12,506) patients. We found no significant heterogeneity ($I^2=0\%$, $P=0.48$; *Figure S1A*), we didn't find obvious heterogeneity by sensitivity analysis (*Figure S1B*), and so the fixed effects model was selected to incorporate the effect size. Pooled results suggested that female NSCLC patients displayed a higher rate of *ROS1* gene rearrangement when compared with male patients (OR =1.94, 95% CI: 1.62–2.32%, $P<0.05$; *Figure S1A*).

Publication bias was tested by Begg's test ($P=0.532$) and Egger's test ($P=0.574$), and no publication bias was observed.

Relationship between ROS1 gene rearrangement and smoking status in NSCLC patients

Thirty studies in the analysis explored the relationship between *ROS1* gene rearrangement and smoking status. A total of 10,161 non-smokers and 8,690 smokers or former

smokers were calculated, and *ROS1* gene rearrangement was observed in 328 non-smokers (3.22%, 328/10,161) and 97 smokers or former smokers (1.11%, 97/8,690). No significant heterogeneity was observed ($I^2 = 8\%$, $P = 0.34$; *Figure S2A*), Sensitivity analysis was performed (*Figure S2B*) and no significant heterogeneity was discovered, so the fixed effects model was selected to incorporate the effect size. Pooled results suggested that patients with no smoking history had an increased rate of *ROS1* gene rearrangement compared with smokers (OR = 2.82, 95% CI: 2.24–3.55%, $P < 0.05$) (*Figure S2A*). Publication bias was checked by Begg's test ($P = 0.392$) and Egger's test ($P = 0.321$), and no publication bias was found to exist.

Relationship between ROS1 gene rearrangement and pathological subtype in NSCLC patients

There were 29 studies about the relationship between *ROS1* gene rearrangement and pathological subtype, mild heterogeneity was can be observed ($I^2 = 18\%$ and $P = 0.2$; *Figure S3A*). Sensitivity analysis showed that 2 articles [Yang *et al.* (2019) (50) and Zhang *et al.* (2018) (52)] had significantly influenced the final results (*Figure S3B*); therefore, these studies were omitted from the data analysis. Among the 27 remaining articles, the heterogeneity decreased obviously ($I^2 = 0\%$ and $P = 0.82$; *Figure S3C*). A total number of 12,256 adenocarcinoma patients and 3,567 non-adenocarcinoma patients were included in the calculation, with *ROS1* gene rearrangement observed in 281 adenocarcinoma patients (2.30%, 281/12,256) and 49 non-adenocarcinoma patients (1.37%, 49/3,567). We did a sensitivity analysis again and found no other studies that had a significant impact on heterogeneity (*Figure S3D*), so the fixed effects model was selected to incorporate the effect size. Pooled results suggested that adenocarcinoma patients had a higher rate of *ROS1* gene rearrangement than non-adenocarcinoma patients (OR = 1.55, 95% CI: 1.14–2.11%, $P < 0.05$; *Figure S3C*). Publication bias was tested by Begg's test ($P = 0.802$) and Egger's test ($P = 0.798$) and no publication bias was detected.

Relationship between ROS1 gene rearrangement and clinical stage in NSCLC patient

There were 20 studies on the relationship between *ROS1* gene rearrangement in NSCLC patients and clinical stage. A total of 8,683 patients with stage III–IV and 5,904 patients with stage I–II were calculated. The merged

frequency of *ROS1* gene rearrangement was 2.81% (244/8,683) in patients with stage III–IV disease and 1.61% (95/5,904) in patients with stage I–II disease. No significant heterogeneity was found ($I^2 = 0\%$, $P = 0.568$; *Figure S4A*). Sensitivity analysis was performed (*Figure S4B*) and no significant heterogeneity was discovered, so the fixed effects model was selected to incorporate the effect size. The merged results showed that an advanced clinical stage (III–IV) was associated with a significantly higher *ROS1* rearrangement rate (OR = 1.50, 95% CI: 1.15–1.94%, $P = 0.003$; *Figure S4A*). Begg's test ($P = 0.456$) and Egger's test ($P = 0.917$) publication bias.

Prevalence of ROS1 gene rearrangement in lung adenocarcinoma

There were 37 studies involved in the analysis of the prevalence of *ROS1* gene rearrangement. A total of 19,385 adenocarcinoma patients were analyzed and 503 were positive for the *ROS1* gene rearrangement. Significant heterogeneity was detected ($I^2 = 78.15\%$, $P = 0$; *Figure S5A*) Sensitivity analysis was carried out to find the source of heterogeneity, none of the literature caused great interference to the results of this meta-analysis, indicating that the stability of this study is acceptable, as shown in the picture (*Figure S5B*). The lack of control groups in single-arm studies could serve as one reason for the increased heterogeneity. Therefore, the random effects model was used to obtain the total effect quantity, as shown in the forest plot above. Pooled analysis of all 37 studies showed a prevalence of 2.49% (95% CI: 1.92–3.11%; *Figure S5A*) in adenocarcinoma.

Discussion

This meta-analysis of these studies showed that *ROS1* gene rearrangement was more common in female patients with no smoking history, adenocarcinoma patients, and patients at a more advanced stage (stage III–IV). The study also showed that prevalence rate of adenocarcinoma of *ROS1* gene rearrangement was 2.49% (95% CI: 1.92–3.11%), the prevalence of non-adenocarcinoma tumors was significantly lower (1.37%). According to the results of this study, *ROS1* gene rearrangement should be included in the genetic test for all NSCLC patients. Zhu *et al.* suggested that *ROS1* gene rearrangement should be routinely screened for adenocarcinoma patients, since *ROS1* gene rearrangement was only 0.2% in non-adenocarcinoma patients (61). In

comparison, the proportion of *ROS1*-rearranged non-adenocarcinoma patients in this study was 1.37%. The incidence of *ROS1* gene rearrangement is higher in adenosquamous carcinoma and pleomorphic carcinoma than adenocarcinoma, which is one of the reasons for the higher rate (62).

Although similar articles have emerged recently. Kho *et al.* has made a similar analysis (63), this article was published in a short format in the Ann Oncol supplement and only focused on Asian population. We have analyzed more data collected from all over the world in our meta-analysis, the summarized results have little heterogeneity and good data stability. We did sensitivity analysis and our summarized results have little heterogeneity, indicating good data stability. In addition, we used the AHRQ scale to evaluate the data quality from the original articles and only kept the satisfactory data set in our meta-analysis.

The relationship between NSCLC patients with *ROS1* gene rearrangement and treatment needs further prospective study. The treatment of patients with *ROS1* gene rearrangement is classical chemotherapy and/or targeted therapy, and the commonly used targeted drug is crizotinib. Scheffler's study showed that 64.2% of patients with *ROS1* gene rearrangement responded to chemotherapy, and the average overall survival (OS) of patients who received chemotherapy and crizotinib was estimated at 5.3 years (64). The results are somewhat consistent with the recently reported efficacy of crizotinib in the treatment of advanced NSCLC (65,66), recent studies have shown a change in the choice of treatment for patients with advanced *ROS1* rearrangement in NSCLC. Patients with first-line selection of platinum-pemetrexed and crizotinib had different objective remission rates (85.1% *vs.* 86.7%) and progression-free survival (8.6 *vs.* 18.4 months), and there was no significant difference in OS (less than *vs.* 28.4 months) between the two groups (66). The relationship between *ROS1* gene rearrangement and drug therapy needs further research to provide evidence.

There are some limitations in the current meta-analysis. Firstly, there may be potential publication bias in our analysis. Although we conducted a systematic search of many databases and berg's tests didn't show significant publication bias, we still can't rule out the possibility of omitting relevant research. Secondly, the purpose of our study of the *ROS1* gene rearrangement was to provide guidance for the selection of clinical treatment regime. The selection of targeted therapy, chemotherapy and targeted combination chemotherapy is related to overall survival.

There was no standardized scheme among the 39 studies in this meta-analysis. The selection of drugs for patients with *ROS1* gene rearrangement is still under investigation, and more large-scale clinical trials or prospective studies are required. Finally, *ROS1* differs from *ALK*, in which the kinase is activated by the rearrangement partner providing a dimeric domain to induce constitutive oligomers, while the constitutive activation mechanism of *ROS1* fusion proteins is unclear. Indeed, many known *ROS1* fusion partners do not contain dimer domains (67). Attention should be paid to the clinical effect of TKI in patients with *ROS1* gene rearrangement, and further related observation and research are needed.

Acknowledgments

Funding: None.

Footnote

Reporting Checklist: The authors have completed the PRISMA reporting checklist. Available at <http://dx.doi.org/10.21037/tcr-20-1813>

Conflicts of Interest: All authors have completed the ICMJE uniform disclosure form (available at <http://dx.doi.org/10.21037/tcr-20-1813>). The authors have no conflicts of interest to declare.

Ethical Statement: The authors are accountable for all aspects of the work in ensuring that questions related to the accuracy or integrity of any part of the work are appropriately investigated and resolved.

Open Access Statement: This is an Open Access article distributed in accordance with the Creative Commons Attribution-NonCommercial-NoDerivs 4.0 International License (CC BY-NC-ND 4.0), which permits the non-commercial replication and distribution of the article with the strict proviso that no changes or edits are made and the original work is properly cited (including links to both the formal publication through the relevant DOI and the license). See: <https://creativecommons.org/licenses/by-nc-nd/4.0/>.

References

1. Zheng ZH, Wu DM, Fan SH, et al. Upregulation of miR-675-5p induced by lncRNA H19 was associated

- with tumor progression and development by targeting tumor suppressor p53 in non-small cell lung cancer. *J Cell Biochem* 2019;120:18724-35.
2. Arenberg D. Update on screening for lung cancer. *Transl Lung Cancer Res* 2019;8:S77-87.
 3. Spitaleri G, Passaro A, de Marinis F. Ensartinib (X-396) a novel drug for anaplastic lymphoma kinase-positive non-small cell lung cancer patients: we need smart trials to avoid wasting good bullets. *Chin Clin Oncol* 2019;8:S1.
 4. Sehgal K, Patell R, Rangachari D, et al. Targeting ROS1 rearrangements in non-small cell lung cancer with crizotinib and other kinase inhibitors. *Transl Cancer Res* 2018;7:S779-86.
 5. Matsushime H, Wang LH, Shibuya M. Human c-ros-1 gene homologous to the v-ros sequence of UR2 sarcoma virus encodes for a transmembrane receptorlike molecule. *Mol Cell Biol* 1986;6:3000-4.
 6. Charest A, Lane K, McMahon K, et al. Fusion of FIG to the receptor tyrosine kinase ROS in a glioblastoma with an interstitial del(6)(q21q21). *Genes Chromosomes Cancer* 2003;37:58-71.
 7. Wang LH, Hanafusa H. Avian sarcoma viruses. *Virus Res* 1988;9:159-203.
 8. Birchmeier C, Sharma S, Wigler M. Expression and rearrangement of the ROS1 gene in human glioblastoma cells. *Proc Natl Acad Sci U S A* 1987;84:9270-4.
 9. Jun HJ, Johnson H, Bronson RT, et al. The oncogenic lung cancer fusion kinase CD74-ROS activates a novel invasiveness pathway through E-Syt1 phosphorylation. *Cancer Res* 2012;72:3764-74.
 10. Charest A, Wilker EW, McLaughlin ME, et al. ROS fusion tyrosine kinase activates a SH2 domain-containing phosphatase-2/phosphatidylinositol 3-kinase/mammalian target of rapamycin signaling axis to form glioblastoma in mice. *Cancer Res* 2006;66:7473-81.
 11. Rikova K, Guo A, Zeng Q, et al. Global survey of phosphotyrosine signaling identifies oncogenic kinases in lung cancer. *Cell* 2007;131:1190-203.
 12. Roskoski R Jr. ROS1 protein-tyrosine kinase inhibitors in the treatment of ROS1 fusion protein-driven non-small cell lung cancers. *Pharmacol Res* 2017;121:202-12.
 13. Lin JJ, Shaw AT. Recent Advances in Targeting ROS1 in Lung Cancer. *J Thorac Oncol* 2017;12:1611-25.
 14. Mazières J, Zalcman G, Crinò L, et al. Crizotinib therapy for advanced lung adenocarcinoma and a ROS1 rearrangement: results from the EUROS1 cohort. *J Clin Oncol* 2015;33:992-9.
 15. Ettinger DS, Aisner DL, Wood DE, et al. NCCN Guidelines Insights: Non-Small Cell Lung Cancer, Version 5.2018. *J Natl Compr Canc Netw* 2018;16:807-21.
 16. Stroup DF, Berlin JA, Morton SC, et al. Meta-analysis of observational studies in epidemiology: a proposal for reporting. Meta-analysis Of Observational Studies in Epidemiology (MOOSE) group. *JAMA* 2000;283:2008-12.
 17. Bai DY, Zhang HP, Suo WH, et al. Changes of EGFR mutations, ALK and ROS1 fusion gene expressions in non-small cell lung cancer patients and their clinicopathologic significance. *Chinese Journal of Histochemistry and Cytochemistry* 2019;28:32-6.
 18. Bu S, Wang R, Pan Y, et al. Clinicopathologic Characteristics of Patients with HER2 Insertions in Non-small Cell Lung Cancer. *Ann Surg Oncol* 2017;24:291-7.
 19. Chen Z, Teng X, Zhang J, et al. Molecular features of lung adenocarcinoma in young patients. *BMC Cancer* 2019;19:777.
 20. Chen Y, Huang Y, Ning H, et al. Clinic-pathologic features and gene fusion pattern of ALK and ROS1 in non-small cell lung cancer show association with household coal combustion. *Transl Cancer Res* 2019;8:2164-74.
 21. Clavé S, Gimeno J, Muñoz-Mármol AM, et al. ROS1 copy number alterations are frequent in non-small cell lung cancer. *Oncotarget* 2016;7:8019-28.
 22. Dugay F, Llamas-Gutierrez F, Gournay M, et al. Clinicopathological characteristics of ROS1- and RET-rearranged NSCLC in caucasian patients: Data from a cohort of 713 non-squamous NSCLC lacking KRAS/EGFR/HER2/BRAF/PIK3CA/ALK alterations. *Oncotarget* 2017;8:53336-51.
 23. Fu S, Liang Y, Lin YB, et al. The Frequency and Clinical Implication of ROS1 and RET Rearrangements in Resected Stage IIIA-N2 Non-Small Cell Lung Cancer Patients. *PLoS One* 2015;10:e0124354.
 24. Gao QQ. Correlation research of ALK, ROS1 and EGFR genemutations and clinicopathological features in NSCLC. Zhejiang, China: Zhejiang University In, 2018.
 25. Ha SY, Choi SJ, Cho JH, et al. Lung cancer in never-smoker Asian females is driven by oncogenic mutations, most often involving EGFR. *Oncotarget* 2015;6:5465-74.
 26. He RZ, Liu, Cai J, et al. Analysis of EGFR, ALK, ROS1 gene mutations and clinicopathological features in non-small cell lung cancer. *J Clin Exp Pathol* 2019;35:843-5.
 27. Huang QJ, Chen TD, Chen HR, et al. Relationship between driver gene mutation and clinicopathological features in 300 cases of non- small cell lung cancer based on next generation sequencing. *J Clin Exp Pathol*

- 2019;35:286-90.
28. Jiang L, Su X, Zhang T, et al. PD-L1 expression and its relationship with oncogenic drivers in non-small cell lung cancer (NSCLC). *Oncotarget* 2017;8:26845-57.
 29. Joshi A, Pande N, Noronha V, et al. ROS1 mutation non-small cell lung cancer-access to optimal treatment and outcomes. *Ecancermedalscience* 2019;13:900.
 30. Jurmeister P, Lenze D, Berg E, et al. Parallel screening for ALK, MET and ROS1 alterations in non-small cell lung cancer with implications for daily routine testing. *Lung Cancer* 2015;87:122-9.
 31. Kuang X, Xiao J, Dai LX, et al. Correlative analysis of gene mutation and clinical features in patients with non-small cell lung cancer. *Transl Cancer Res* 2019;8:736-51.
 32. Lee J, Park CK, Yoon HK, et al. PD-L1 expression in ROS1-rearranged non-small cell lung cancer: A study using simultaneous genotypic screening of EGFR, ALK, and ROS1. *Thorac Cancer* 2019;10:103-10.
 33. LiXie MD, Luo K, Wu SF, et al. Mutation Analysis of EGFR, ALK and ROS1 in Tumor Tissues of Patients with Non-Small Cell Lung Cancer in South of China. *J Mod Lab Med* 2017;32:16-8,23.
 34. Li XF, Zhang GJ, Wang YY, et al. Combined detection and coexistent genetic mutation analysis of EGFR, ALK and ROS1 in non-small cell lung cancer. *J Mol Diagn Ther* 2018;10:378-84.
 35. Li JN, Yu GY, Han YP. Relationship between driving genes and clinical pathology and prognosis in non-small cell lung cancer. *J Trop Med* 2018;18:28-31+5.
 36. Liang XQ, Liu FL, Zhao FH, et al. Detection of ALK and ROS1 fusion gene in lung adenocarcinomas patients and its clinical significance. *Int J Respir* 2016;36:1686-90.
 37. Liu JG, Zhao RY, Teng HH, et al. Detection of ROS1 fusion gene in pulmonary adenocarcinoma and its clinicopathologic features. *Chin J Pathol* 2015;(6):390-4.
 38. Liu CY, Sun Y, Gao LL, et al. Analysis of the mutation state of EGFR, ALK and ROS1 genes in 139 biopsy specimens of lung cancer. *J Clin Pathol Res* 2018;38:498-503.
 39. Mazieres J, Drilon A, Lusque A, et al. Immune checkpoint inhibitors for patients with advanced lung cancer and oncogenic driver alterations: Results from the IMMUNOTARGET registry. *Ann Oncol* 2019;30:1321-8.
 40. Plodkowski AJ, Drilon A, Halpenny DF, et al. From genotype to phenotype: Are there imaging characteristics associated with lung adenocarcinomas harboring RET and ROS1 rearrangements? *Lung Cancer* 2015;90:321-5.
 41. Qiao X, Ai D, Liang H, et al. Gene Expression and Clinical Characteristics of Molecular Targeted Therapy in Non-small Cell Lung Cancer Patients in Shandong. *Zhongguo Fei Ai Za Zhi* 2017;20:14-20.
 42. Rogers TM, Russell PA, Wright G, et al. Comparison of methods in the detection of ALK and ROS1 rearrangements in lung cancer. *J Thorac Oncol* 2015;10:611-8.
 43. Song Z, Yu X, Zhang Y. Clinicopathological characteristics and survival of ALK, ROS1 and ret arrangements in non-adenocarcinoma non-small cell lung cancer patients. *J Thorac Oncol* 2017;12:S494.
 44. Vlajnic T, Savic S, Barascud A, et al. Detection of ROS1-positive non-small cell lung cancer on cytological specimens using immunocytochemistry. *Cancer Cytopathol* 2018;126:421-9.
 45. Wang Y, Chen J, Ding W, et al. Clinical Features and Gene Mutations of Lung Cancer Patients 30 Years of Age or Younger. *PLoS One* 2015;10:e0136659.
 46. Wang Q, Lv Y, Zhong M, et al. Analysis of the status of EGFR, ROS1 and MET genes in non-small cell lung adenocarcinoma. *J Buon* 2017;22:1053-60.
 47. Wu S, Wang J, Zhou L, et al. Clinicopathological characteristics and outcomes of ROS1-rearranged patients with lung adenocarcinoma without EGFR, KRAS mutations and ALK rearrangements. *Thorac Cancer* 2015;6:413-20.
 48. Wu J, Lin Y, He X, et al. Comparison of detection methods and follow-up study on the tyrosine kinase inhibitors therapy in non-small cell lung cancer patients with ROS1 fusion rearrangement. *BMC Cancer* 2016;16:599.
 49. Yang CS, Yang YL, Ding XJ, et al. Diver gene mutation among non-small cell lung cancer tissue and its clinical significance. *Chin J Exp Pathol* 2017;33:1183-7.
 50. Yang SH, Wen MM, Zhang ZP, et al. Relationship of ROS1 fusion gene mutation with EGFR mutation and clinicopathological features in non-small cell lung cancer. *Chin Clin Oncol* 2019;24:175-8.
 51. Zhang S, Yan B, Zheng J, et al. Gene status and clinicopathologic characteristics of lung adenocarcinomas with mediastinal lymph node metastasis. *Oncotarget* 2016;7:63758-66.
 52. Zhang Q, Han Y, Zhang J, et al. A large-scale retrospective study on ROS1 fusion in lung carcinoma in a Chinese population. *Ann Oncol* 2018;29:IX148.
 53. Zhang Q, Wu C, Ding W, et al. Prevalence of ROS1 fusion in Chinese patients with non-small cell lung cancer. *Thorac Cancer* 2019;10:47-53.
 54. Song Z, Zheng Y, Wang X, et al. ALK and ROS1

- rearrangements, coexistence and treatment in epidermal growth factor receptor-wild type lung adenocarcinoma: a multicenter study of 732 cases. *J Thorac Dis* 2017;9:3919-26.
55. Zhong S, Zhang H, Bai D, et al. Detection of ALK, ROS1 and RET fusion genes in non-small cell lung cancer patients and its clinicopathologic correlation. *Zhonghua Bing Li Xue Za Zhi* 2015;44:639-43.
 56. Higgins JPT, Thompson SG, Deeks JJ, et al. Measuring inconsistency in meta-analyses. *BMJ* 2003;327:557-60.
 57. Dekkers OM. Meta-analysis: Key features, potentials and misunderstandings. *Res Pract Thromb Haemost* 2018;2:658-63.
 58. Borenstein M, Hedges LV, Higgins JPT, et al. A basic introduction to fixed-effect and random-effects models for meta-analysis. *Res Synth Methods* 2010;1:97-111.
 59. Borenstein M, Higgins JPT, Hedges LV, et al. Basics of meta-analysis: I(2) is not an absolute measure of heterogeneity. *Res Synth Methods* 2017;8:5-18.
 60. Rossi G, Jocolle G, Conti A, et al. Detection of ROS1 rearrangement in non-small cell lung cancer: current and future perspectives. *Lung Cancer* 2017;8:45-55.
 61. Zhu Q, Zhan P, Zhang X, et al. Clinicopathologic characteristics of patients with ROS1 fusion gene in non-small cell lung cancer: a meta-analysis. *Transl Lung Cancer Res* 2015;4:300-9.
 62. Yang J, Pyo JS, Kang G. Clinicopathological significance and diagnostic approach of ROS1 rearrangement in non-small cell lung cancer: a meta-analysis: ROS1 in non-small cell lung cancer. *Int J Biol Markers* 2018;1724600818772194.
 63. Kho CYX, Lim DWT, Tan DSW, et al. Clinicopathological characteristics and outcome of advanced ROS1-positive non-small cell lung cancer in Asian patients. *Ann Oncol* 2019;30:ii38-ii68.
 64. Scheffler M, Schultheis A, Teixido C, et al. ROS1 rearrangements in lung adenocarcinoma: prognostic impact, therapeutic options and genetic variability. *Oncotarget* 2015;6:10577-85.
 65. Xu H, Zhang Q, Liang L, et al. Crizotinib vs platinum-based chemotherapy as first-line treatment for advanced non-small cell lung cancer with different ROS1 fusion variants. *Cancer Med* 2020;9:3328-36.
 66. Shen L, Qiang T, Li Z, et al. First-line crizotinib versus platinum-pemetrexed chemotherapy in patients with advanced ROS1-rearranged non-small-cell lung cancer. *Cancer Med* 2020;9:3310-8.
 67. Takeuchi K, Soda M, Togashi Y, et al. RET, ROS1 and ALK fusions in lung cancer. *Nat Med* 2012;18:378-81.

Cite this article as: Bi H, Ren D, Ding X, Yin X, Cui S, Guo C, Wang H. Clinical characteristics of patients with *ROS1* gene rearrangement in non-small cell lung cancer: a meta-analysis. *Transl Cancer Res* 2020;9(7):4383-4392. doi: 10.21037/tcr-20-1813

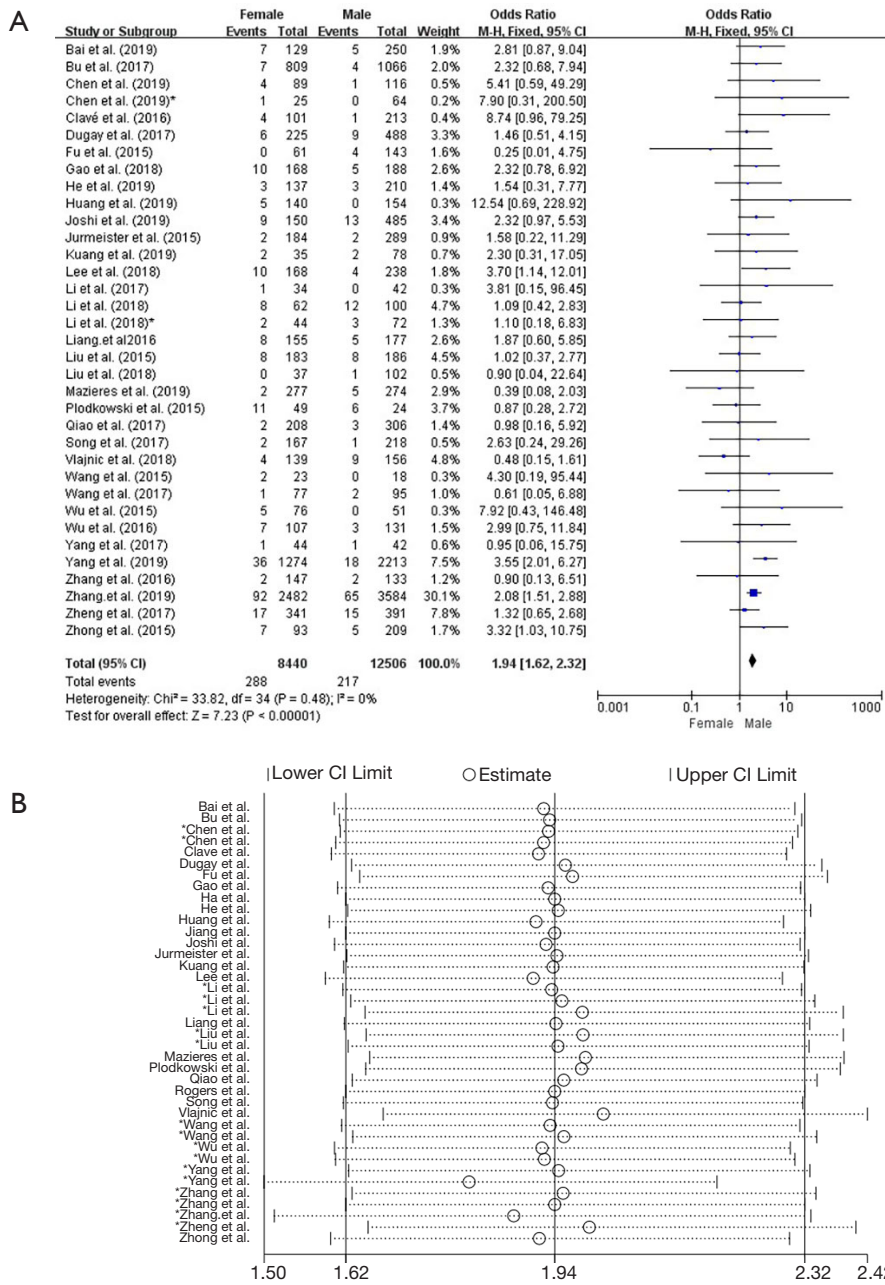


Figure S1 The relationship between *ROS1* gene rearrangement and gender in NSCLC patients. (A) Forest plot of odds ratios (ORs) and 95% confidence intervals (CIs) from the related studies. The first author has the same last name. (B) Sensitivity analysis of the relationship between *ROS1* gene rearrangement and gender in NSCLC patients. The order of first names of the same surname is shown in *Table 1*.

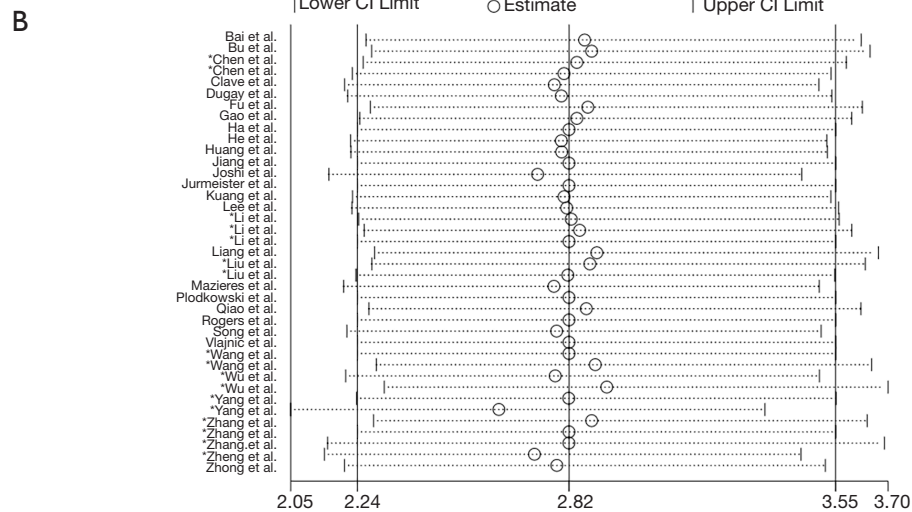
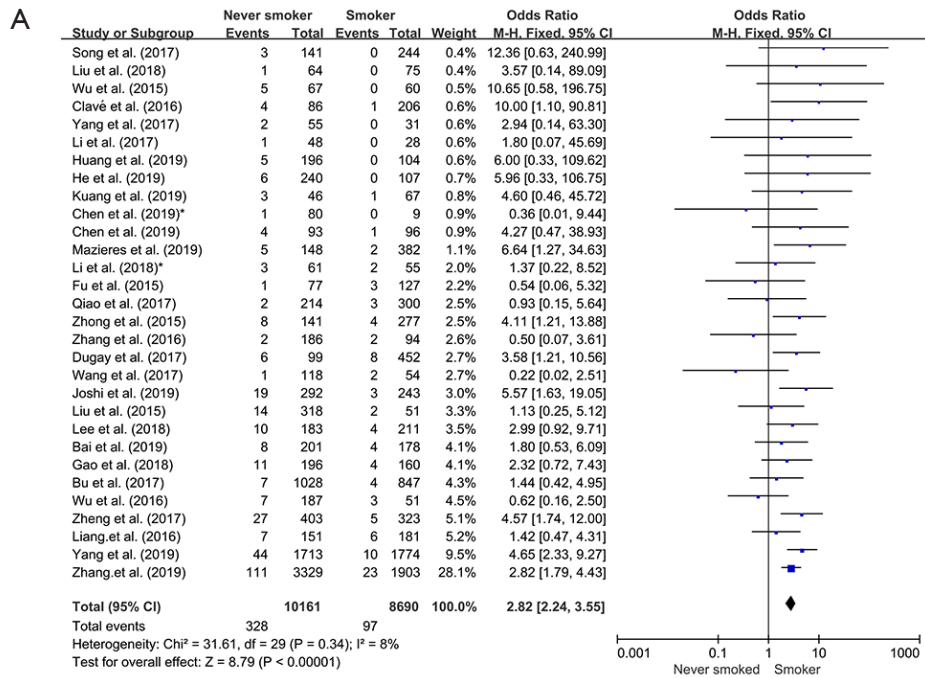


Figure S2 The relationship between *ROS1* gene rearrangement and smoking status in NSCLC patients. (A) Forest plot of odds ratios (ORs) and 95% confidence intervals (CIs) from the related studies. The first author has the same last name. (B) Sensitivity analysis of the relationship between *ROS1* gene rearrangement and smoking status in NSCLC patients. The order of first names of the same surname is shown in *Table 1*.

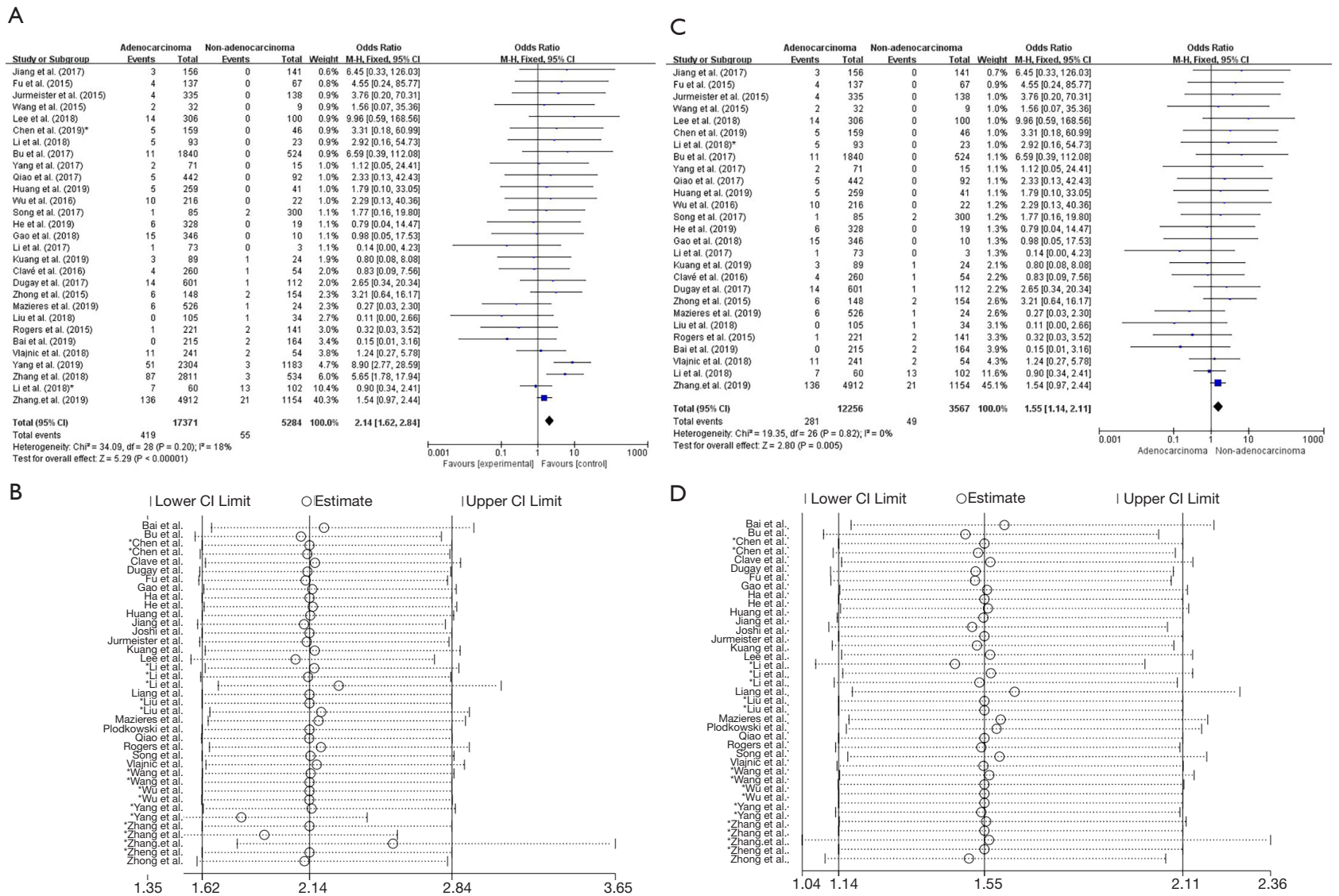


Figure S3 Relation between *ROS1* gene rearrangement positive and Pathological subtype in NSCLC patients. (A) Forest plot of odds ratios (ORs) and 95% confidence intervals (CI) from related study. The first author has the same last name. (B) Sensitivity analysis of the relationship between *ROS1* gene rearrangement positive and pathological subtype in NSCLC patients. The order of first names of the same surname is shown in *Table 1*. (C) The relationship between *ROS1* gene rearrangement and pathological subtype in NSCLC patients. Forest plot of odds ratios (ORs) and 95% confidence intervals (CIs) from the related studies. The first author has the same last name. (D) Sensitivity analysis of the relationship between *ROS1* gene rearrangement and pathological subtype in NSCLC patients. The order of first names of the same surname is shown in *Table 1*.

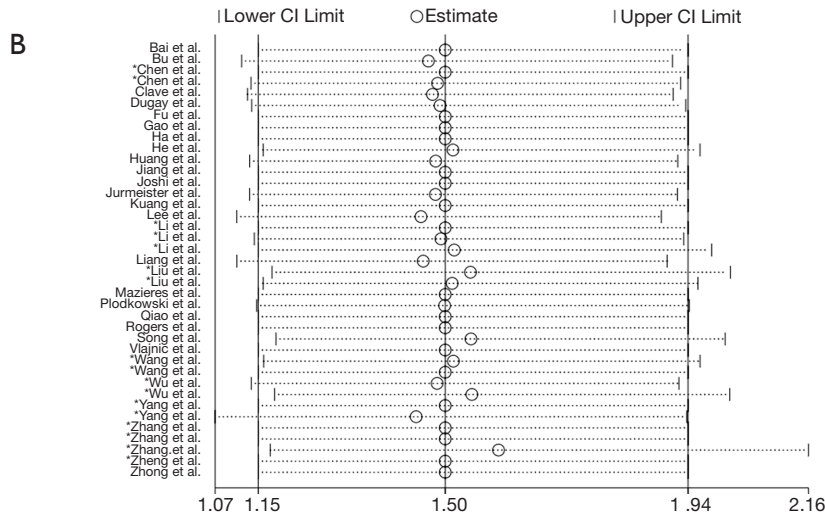
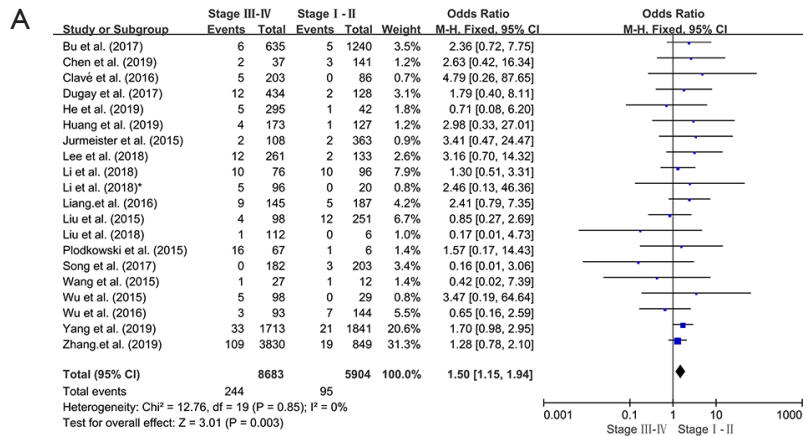


Figure S4 The relationship between *ROS1* gene rearrangement and clinical stage in NSCLC patients. (A) Forest plot of odds ratios (ORs) and 95% confidence intervals (CIs) from the related studies. The first author has the same last name. (B) Sensitivity analysis of the relationship between *ROS1* gene rearrangement and clinical stage in NSCLC patients. The order of first names of the same surname is shown in *Table 1*.

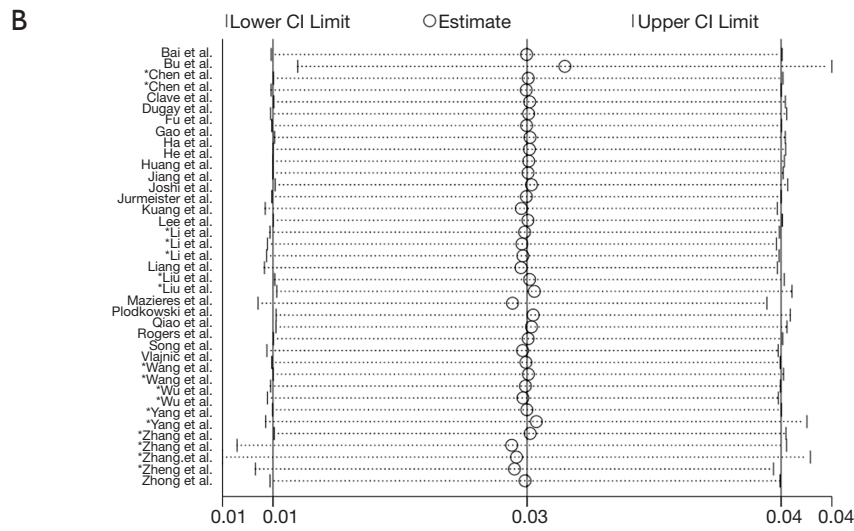
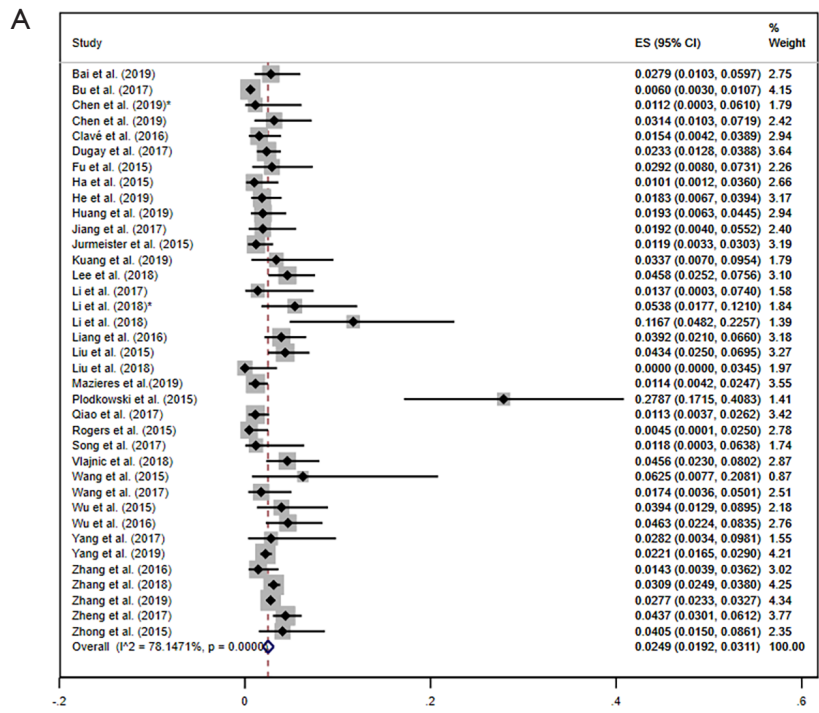


Figure S5 Prevalence of *ROS1* gene rearrangement in NSCLC patients with adenocarcinoma. (A) Forest plot of odds ratios (ORs) and 95% confidence intervals (CIs) from each study. The first author has the same last name. (B) Sensitivity analysis of prevalence of *ROS1* gene rearrangement in lung adenocarcinoma. The order of first names of the same surname is shown in *Table 1*.