

Role of EXO1 nuclease activity in genome maintenance, the immune response and tumor suppression in *Exo1^{D173A}* mice

Shanzhi Wang^{1,2}, Kyeryoung Lee¹, Stephen Gray^{3,4}, Yongwei Zhang¹, Catherine Tang⁵, Rikke B. Morrish⁶, Elena Tosti¹, Johanna van Oers¹, Mohammad Ruhul Amin⁷, Paula E. Cohen³, Thomas MacCarthy⁵, Sergio Roa^{8,9,10,*}, Matthew D. Scharff^{1,*}, Winfried Edelmann^{1,*} and Richard Chahwan^{11,*}

¹Department of Cell Biology, Albert Einstein College of Medicine, 1300 Morris Park Avenue, NY 10461, USA, ²Current position: Department of Chemistry, University of Arkansas at Little Rock, Little Rock, AR 72204, USA, ³Department of Biomedical Sciences, Cornell University, NY 14853, USA, ⁴Current position: School of Life Sciences, University of Nottingham, Nottingham NG7 2UH, UK, ⁵Department of Applied Mathematics and Statistics, Stony Brook University, Stony Brook, NY, USA, ⁶Current position: School of Physics and Astronomy, University of Exeter, Exeter EX4 4QD, UK, ⁷Department of Computer and Information Science, Fordham University, Bronx, NY, USA, ⁸Department of Biochemistry and Genetics, University of Navarra, 31008 Pamplona, Spain, ⁹Centro de Investigacion Biomedica en Red de Cancer (CIBERONC), Instituto de Salud Carlos III, Madrid, Spain, ¹⁰Navarra Institute for Health Research (IdiSNA), Pamplona, Spain and ¹¹Institute of Experimental Immunology, University of Zurich, Zurich 8057, Switzerland

Received September 04, 2021; Revised May 30, 2022; Editorial Decision June 24, 2022; Accepted June 30, 2022

ABSTRACT

DNA damage response pathways rely extensively on nuclease activity to process DNA intermediates. Exonuclease 1 (EXO1) is a pleiotropic evolutionary conserved DNA exonuclease involved in various DNA repair pathways, replication, antibody diversification, and meiosis. But, whether EXO1 facilitates these DNA metabolic processes through its enzymatic or scaffolding functions remains unclear. Here, we dissect the contribution of EXO1 enzymatic versus scaffolding activity by comparing *Exo1^{DA/DA}* mice expressing a proven nuclease-dead mutant form of EXO1 to entirely EXO1-deficient *Exo1^{-/-}* and EXO1 wild type *Exo1^{+/+}* mice. We show that *Exo1^{DA/DA}* and *Exo1^{-/-}* mice are compromised in canonical DNA repair processing, suggesting that the EXO1 enzymatic role is important for error-free DNA mismatch and double-strand break repair pathways. However, in non-canonical repair pathways, EXO1 appears to have a more nuanced function. Next-generation sequencing of heavy chain V region in B cells showed the mutation spectra of *Exo1^{DA/DA}* mice to be interme-

diated between *Exo1^{+/+}* and *Exo1^{-/-}* mice, suggesting that both catalytic and scaffolding roles of EXO1 are important for somatic hypermutation. Similarly, while overall class switch recombination in *Exo1^{DA/DA}* and *Exo1^{-/-}* mice was comparably defective, switch junction analysis suggests that EXO1 might fulfill an additional scaffolding function downstream of class switching. In contrast to *Exo1^{-/-}* mice that are infertile, meiosis progressed normally in *Exo1^{DA/DA}* and *Exo1^{+/+}* cohorts, indicating that a structural but not the nuclease function of EXO1 is critical for meiosis. However, both *Exo1^{DA/DA}* and *Exo1^{-/-}* mice displayed similar mortality and cancer predisposition profiles. Taken together, these data demonstrate that EXO1 has both scaffolding and enzymatic functions in distinct DNA repair processes and suggest a more composite and intricate role for EXO1 in DNA metabolic processes and disease.

INTRODUCTION

Exonuclease 1 (EXO1) is an evolutionarily conserved member of the XPG/Rad2 family of metallo-nucleases. EXO1

*To whom correspondence should be addressed. Tel: +41 446353710; Email: richard.chahwan@uzh.ch
Correspondence may also be addressed to Winfried Edelmann. Tel: +1 718 678 1086; Email: winfried.edelmann@einsteinmed.org
Correspondence may also be addressed to Matthew D. Scharff. Tel: +1 718 430 3527; Email: matthew.scharff@einsteinmed.org
Correspondence may also be addressed to Sergio Roa. Tel: +34 948425600; Email: sroa@unav.es

and its biochemical nuclease activity was initially identified in extracts of fission yeast undergoing meiosis and has since been shown to fulfill broader biological functions in mammalian cells during DNA damage responses (DDR), including DNA mismatch repair (MMR), DNA double-strand break repair (DSBR), and telomere maintenance (1–3). In immune B cells, EXO1 can also mediate non-canonical forms of MMR that promote antibody diversification through somatic hypermutation (SHM) and class switch recombination (CSR) (4). In germ cells, EXO1 mediates genetic diversity by promoting recombination during meiosis (5). Catalytically, EXO1 has 5' to 3' exonuclease and 5'-flap endonuclease activities (6,7). Yet, these seemingly distinct nuclease activities are now shown to be mechanistically integrated (8).

DNA mismatches are some of the most common forms of DNA damage, arising mainly during replication. MMR is the main pathway that removes misincorporated nucleotides that result from erroneous replication. During MMR, the coordination of mismatch recognition and excision is facilitated by MutS homolog (MSH) and MutL homolog (MLH) complexes. Briefly, MSH2 forms a complex with MSH6 (MutS α) to predominantly initiate the repair of single-base mispairs and insertion/deletions (IDLs) and with MSH3 (MutS β) to predominantly initiate the repair of larger IDLs of two to four bases. Subsequent to mismatch recognition, MutS α and MutS β interact with the MLH1-PMS2 (MutL α) complex in an ATP-dependent manner to initiate EXO1 mediated excision of the DNA strand carrying the mismatched base(s). The repair process is completed by DNA re-synthesis to fill the resulting single strand gap and ligation. Thus far, EXO1 is the only known exonuclease that facilitates the removal of the mismatch-carrying strand during MMR (9,10). MMR is shown to improve replicative fidelity by over two orders of magnitude; hence, reducing genomic mutator phenotypes (9,11), and EXO1 plays an important part in that process. During MMR, EXO1 directly interacts with MLH1, MSH2, and MSH3 both in yeast (12,13) and mammalian cells (14,15). As a result, it was speculated that EXO1 could fulfill both catalytic and structural roles during MMR but direct *in vivo* evidence for this idea remained elusive (16). EXO1-independent excision in MMR has been described in yeast involving PCNA, Msh2/6 and Mlh1/Pms1 endonuclease (17,18). In addition, Exo1 independent MMR was proposed to involve replication dependent strand displacement of the mismatch carrying strand in *in vitro* experiments (19). Interestingly, a non-canonical error-prone subset of MMR occurs during B cell maturation. During this process, initiated by AID-induced U:G mismatches in germinal center B cells, EXO1 is believed to resect mismatches akin to its role during canonical MMR. However, when repairing AID induced mismatches in antibody V regions, this process subsequently diverges by the recruitment of error-prone polymerases, which were shown to be recruited by ubiquitinated PCNA (20,21).

Another repair mechanism that relies on EXO1 activity is DSBR, which repairs some of the most toxic forms of DNA damage. DNA end resection of DSBs in the 5' to 3' direction is a critical intermediate in this process. The ensuing single-stranded DNA (ssDNA) induces two interdependent responses, namely checkpoint signaling and ini-

tiation of homologous recombination (HR) mediated DNA repair. Studies in yeast and mammals (22,23) suggest a two-step model for DSB processing. MRE11-RAD50-NBS1 (MRN) and CtIP initiate the 'end-trimming' of the DSB, which is then followed by the generation of longer stretches of ssDNA by either EXO1 or the BLM/DNA2 helicase-nuclease complex (22,24). Two physiological and beneficial subsets of DSBR occur during B cell maturation through CSR and during meiosis in germ cells. Both processes are dependent on adequate upstream DSBR signaling, but they diverge considerably downstream. While meiosis relies on the error-free HR pathway for crossover formation, CSR relies on the error-prone pathway of non-homologous end joining (NHEJ) to generate intra-chromosomal switch region translocations and facilitate isotype switching. As a result of this divergence, the dependency of these two processes on EXO1-mediated resection remains unclear.

Deficiencies in MMR and DSBR associated processes can lead to chromosomal instability, infertility, neurodegeneration, tumorigenesis, and immune defects (25). Given its pleiotropic roles in the DNA damage response, it is expected that defects in EXO1 could also lead to some of these anomalies. Indeed, mice with an inactivating mutation in EXO1 had meiotic defects and sterility due to loss of chiasmata during metaphase (26), impaired SHM and CSR, loss of mismatch repair activity, and a 30 fold increase of mutation frequency in mouse ES cells (4,5). EXO1 inactivation also reduced overall survival in mice and caused an increased incidence of cancers, especially lymphomas (4,5). In humans, germline mutations in *EXO1* have been associated with hereditary nonpolyposis colorectal cancer/Lynch syndrome (HNPCC/LS) (27).

To dissect the scaffolding function from the enzymatic function of EXO1, a mouse line with the cancer-associated E109K mutation was previously generated and characterized (5). Residue E109 is a surface residue of the catalytic domain in the crystal structure (28) and, even though it does not directly affect the catalytic site, it had been reported to be essential for the nuclease activity when the N-terminal fragment of human EXO1 was examined biochemically (5,29). *In vivo*, homozygous mutant *Exo1^{EK/EK}* knock-in mice carrying the EXO1^{E109K} showed defects in the DNA damage response (DDR) and increased cancer predisposition. Unexpectedly the *Exo1^{EK/EK}* mice showed normal activity in SHM, CSR, MMR, meiosis and were fertile, while *Exo1^{-/-}* mice had defects in all of these processes. This was interpreted to mean that EXO1 had an essential scaffolding role, but its enzymatic activity could be replaced by some unknown factor during SHM, CSR, MMR, and meiosis (5). However, this conclusion was challenged by two subsequent independent biochemical observations, where for the first time full-length non-tagged EXO1^{E109K} was purified *in vitro*, and near WT activity was detected (30,31). In contrast to the E109K mutation, these studies also confirmed that the EXO1^{D173A} mutation within the catalytic site, which had been previously reported to be nuclease-dead in yeast and mammals (32–35), also caused the clear inactivation of EXO1 nuclease activity *in vitro* (6,30,31), offering a new alternative to reevaluate the nuclease and scaffold functions of EXO1 *in vivo*. To adequately separate the nuclease and scaffold functions of EXO1, we herein generate a

new knock-in mouse line carrying the Exo1^{D173A} mutation (Exo1^{DA}) and compare it to Exo1^{-/-} and Exo1^{+/+} mice. Characterization of these animals confirms that EXO1 exhibits both scaffolding and catalytic functions, demonstrating that its exonuclease activity is essential in most DNA repair mechanisms (i.e. DDR, MMR, SHM and CSR) while it remains nonessential for meiosis, where EXO1 appears to play a critical structural role.

MATERIALS AND METHODS

Mice and MEF strains

The generation of Exo1^{-/-} mice has been described previously (4). Exo1^{DA/DA} mice were generated using CRISPR/Cas9 technology (36–38). In brief, the mixture of guide RNA targeting to the adjacent area of Exo1 D173 coding region on exon-6 (CRISPR targeting sequence is gactctgacctctcctgcattTGG), Cas9 mRNA, and donor DNA carrying the ~1 kb homologous arms at each side and the surrounded desired DNA mutation were injected into zygotes of C57BL/6J mice and then the injected fertilized eggs were transferred into pseudopregnant CD1 female mice for producing pups. The resulting offspring were genotyped by PCR and Sanger sequencing to identify the founders carrying the desired Exo1 D173A mutation. The founders (F0) were mated with wild-type C57BL/6J mice, and then the resulting germline transmitted F1 heterozygotes were bred to establish study cohorts. When indicated, Exo1^{+/+}, Exo1^{+/DA} and Exo1^{+/-} mice were further crossed to Big Blue transgenic mice (58) or p53^{+/-} mice (5). Mouse embryonic fibroblasts (MEFs) were isolated from embryos of pregnant mice at day 13.5 post-conception. MEF cell lines were passaged 4–6 times and cryopreserved. All protocols were performed in accordance with the Animal Care and Use Committee of Albert Einstein College of Medicine (AECOM) under the direction of Public Health Service (PHS) Policy on Humane Care and Use of Laboratory Animals.

Analysis of cII mutation frequencies

Exo1^{+/+}, Exo1^{+/-} and Exo1^{+/DA} mice were crossed to Big Blue transgenic mice (56) to generate Exo1^{+/+}/BigBlue, Exo1^{-/-}/BigBlue, and Exo1^{DA/DA}/BigBlue mice. Mutations in genomic DNA from the spleen and liver were detected using the λ Select-cII Mutation Detection System for Big Blue Rodents (Stratagene) as we have done in the past (58).

CPT treatment and immunofluorescence

Primary MEFs were grown on coverslips and treated with 1 μM CPT or DMSO (control). After 1 h, the drug was removed and cells were pre-extracted for 5 min on ice in 10 mM Pipes buffer (pH 6.8) containing 300 mM sucrose, 50 mM NaCl, 3 mM EDTA, 0.5% Triton X-100, and Protease Inhibitor Mixture (EDTA-free; Roche) before fixation in 2% (wt/vol) paraformaldehyde for 15 min at 25°C. After fixation, cells were washed with PBS and then were blocked with 5% (wt/vol) BSA and 0.1% Triton X-100 in PBS before staining with mouse anti-γH2AX (Cell Signaling), rabbit anti-RPA pS4/S8 (Bethyl), and DAPI (Vector) for 1 h.

After washes in PBS + 0.1% Triton X-100, Alexa 488 goat anti-mouse/rabbit, and Alexa 598 goat anti-mouse/rabbit (Molecular Probes) were used as secondary antibodies. Images were acquired using a Bio-Rad Radiance 2100 (Nikon Eclipse E800) microscope using Lasersharp 2000 software (Zeiss).

MNNG treatment

After crossing all models presented here to p53^{+/-} mice, MEF cell lines were generated and pretreated with 20 μM O-6-benzylguanine (O6BG, Sigma) before the addition of MNNG to inhibit the repair of O6meG adducts by O-6-methylguanine-DNA methyltransferase (MGMT, Sigma). After 48 h MNNG treatment, relative cell viability was determined using thiazolyl blue tetrazolium bromide (MTT)-conversion (Sigma) as per the manufacturer's instructions. The absorbance of converted dye was measured at a wavelength of 570 nm using a Perkin Elmer Victor X5 plate reader. Cell viability was calculated relative to DMSO-treated cells incubated in parallel.

Analysis of murine tumors and survival

Mice were routinely observed until they became moribund and/or signs of tumour development occurred and required euthanasia. The Kaplan–Meier method was used to compare the overall survival curves of the mice, using the log-rank analysis to evaluate significance. All tumors were processed for paraffin embedding, and sections were prepared for H&E staining and evaluated by a pathologist. Statistical analysis of tumour incidence was performed using the Fisher's exact test.

Immunization and hypermutation analysis on VH186.2

Age-matched mice (Exo1^{+/+}, Exo1^{-/-} and Exo1^{DA/DA}) were immunized intraperitoneally with 200 μg NP(33)-CGG (BioSearch Technologies) on alum. For primary response analysis, animals were sacrificed, and spleens were removed 10 days after a single immunization. Subsequently, RNA was extracted using Purelink RNA Mini Kit (ThermoFisher) and cDNA was generated using AccuScript High Fidelity 1st Strand cDNA Synthesis Kit (Stratagene). The *Mus musculus* IGHV1-72*01 allele (IMGT accession number J00530:206–499), referred here as VH186.2, was amplified using a nested PCR as previously described (21), and PCR products were gel purified and stored in 50 μl buffer containing 10 mM Tris (pH 8.0) until submission to TruSeq® DNA library preparation (Illumina) following manufacturer's instructions. After quality control by Bioanalyzer (Bio-Rad), libraries were pair-end sequenced on a MiSeq Sequencer (Illumina) at Einstein Epigenetics Facility. Using an in-house computational pipeline based on Kernel written in ultra-fast C++ and a GUI written in Java, Illumina pair-reads were assembled and collapsed according to their unique molecular identifier (UMI) to reconstruct unique overlap VH186.2DJ regions. These sequences in FASTA format were then submitted to IMGT/HighV-QUEST (39) for VH186.2-D-J usage and CDR3 clonality identification. Then, customized Python and R scripts

were used for mutational analyses after randomly resampling during 1000 iterations one single sequence per CDR3 clone, allowing us to increase our sensitivity for unique mutations, which are expected to derive from independent mutational events, and avoid overestimating mutation frequencies by repeated counting of non-unique mutations inherited within the clonal CDR3 lineage. For each group of *Exo1*^{+/+}, *Exo1*^{-/-} and *Exo1*^{DA/DA} iterations, frequencies of mutation were normalized to the potential maximum number of the corresponding mutation subtype as we have previously described (40), which corrects for sequence composition and size of CDR3 repertoire.

Ex Vivo assay of class switching

Splenic cells were isolated from immunized animals (*Exo1*^{+/+}, *Exo1*^{-/-} and *Exo1*^{DA/DA}). Red blood cells and T cells were removed by ammonium chloride and complement-dependent lysis with details described as previously (21). The rest of the cells were stimulated either using 50 µg/ml of LPS from Sigma-Aldrich (St. Louis, MO) or using 50 µg/ml of LPS plus 50 ng/ml of mouse IL-4 from R&D Systems (Minneapolis, MN). After 4 days in complete RPMI media at 37°C, cells were stained against surface IgM (ImmunoResearch) plus IgG1 (SouthernBiotech) or IgM plus IgG3 (SouthernBiotech), which was followed by FACS analysis.

Switch junction analysis

After LPS stimulation for 4 days, splenic B cells were collected for genomic DNA isolation using the DNeasy kit (Qiagen). S_μ-S_γ3 regions were amplified using nested PCR with details and primers as previously described (41). PCR products were purified with QIAquick PCR purification kit (Qiagen), ligated to Topo Blunt vector (Invitrogen) and transformed in *E. coli* chemical competent cells. Plasmids from individual *E. coli* colonies were purified and sequenced for the inserted switch junctional regions. Switch junctions were analyzed by alignment using BLAST2seq with the automatic low-complexity filter disabled and using consensus sequences from the NC.000078.6 GenBank record. The nonparametric Kruskal-Wallis test followed by the Dunn's post-tests were used to calculate *P*-values and interrogate whether the different groups showed identical distributions of microhomology lengths at the S_μ-S_γ3 junctions (computed as 0 for blunt junctions, as positive values for short and long microhomologies, and as negative values for insertions). Frequency of insertions was calculated by dividing the number of occurrences by the total number of S_μ-S_γ3 junctions characterized in each group, and statistically compared through Fisher's exact tests.

Meiosis

Analysis of Meiotic Prophase I was performed as previously described (42,43). After Chromosome spreading, the slides were washed, blocked, and then incubated with a primary antibody against synaptonemal complex protein 3 (SYCP3), MLH1, or CDK2. After subsequent washing and blocking, the slides were incubated with a secondary

antibodies conjugated to fluorophores. After further washing, slides were analyzed using an upright fluorescent microscope (Zeiss Axiophot with Zen 2.0 software).

Spermatocyte diakinesis spread preparations

Spread diakinesis preparations were made as described (44,45). Briefly, testis cells were liberated by manual dissection of tubules in 0.5% KCl. Multiple mixing and slow centrifugation followed by fixation in 30% methanol: 10% acetic acid: 0.05% chloroform. Cells were finally fixed in 30% methanol: 10% acetic acid and then pipette onto heated slides. Finally slides were stained in using Giemsa and imaged. Slides were imaged on a Zeiss Axiophot with Zen 2.0 software.

RESULTS

Generation of nuclease-dead *Exo1*^{D173A} mice

To create an inactivating nuclease-dead EXO1 mutation, we generated a novel knock-in mouse line that carries the EXO1^{D173A} mutation (termed *Exo1*^{DA}) by CRISPR/Cas9 technology in fertilized oocytes isolated from C57BL/6 female mice (Supplementary Figure S1A). The *Exo1*^{DA} mutation was verified in the offspring by PCR and Sanger sequencing (Supplementary Figure S1B). This mutant protein was previously shown to have no detectable nuclease activity biochemically (30,31). Notably, the EXO1^{D173} residue is evolutionarily conserved in both fission and budding yeast as well as mouse and humans (Figure 1A, B). Furthermore, structural modeling of the resolved EXO1 crystal structure shows that residue EXO1^{D173} is embedded in the exonuclease active site and is in direct contact with DNA moieties (8), which predicts a pronounced anomaly in the EXO1 nuclease active site as a consequence of the EXO1^{D173A} mutation (Figure 1C). However, such a perturbation is not expected to affect protein folding and stability, DNA binding, or MMR protein interactions as demonstrated by the distinct domain dependencies (Figure 1B, C; Supplementary Figure S2A, B) and this is supported by studies in yeast and mammalian cells (30,31,33,34,46). Consistent with this, we observed stable expression of mutant EXO1^{DA} protein comparable to wild type EXO1 by Western-blot analysis, compared to complete protein loss in previously characterized *Exo1*^{-/-} mice (5) (Supplementary Figure S1C).

The catalytic activity of EXO1 is predominant over scaffolding functions in canonical DDR

To measure the integrity of canonical error-free MMR function *in vivo*, *Exo1*^{+/+}, *Exo1*^{DA/DA} and *Exo1*^{-/-} mice were crossed to *BigBlue* mice (5,47). The accumulation of mutations in the *cII* reporter gene was analyzed in genomic DNA from the liver and spleen in all three cohorts. We observed that mutation rates were consistently 2–3 times higher in both *Exo1*^{-/-} and *Exo1*^{DA/DA} mutant mice compared to *Exo1*^{+/+} mice, thereby confirming that the catalytic role of EXO1 is essential for canonical error-free DNA mismatch repair in mammalian cells *in vivo* (Figure 2A).

In order to investigate the role of EXO1 in DSB repair, we established primary mouse embryonic fibroblasts (MEFs)

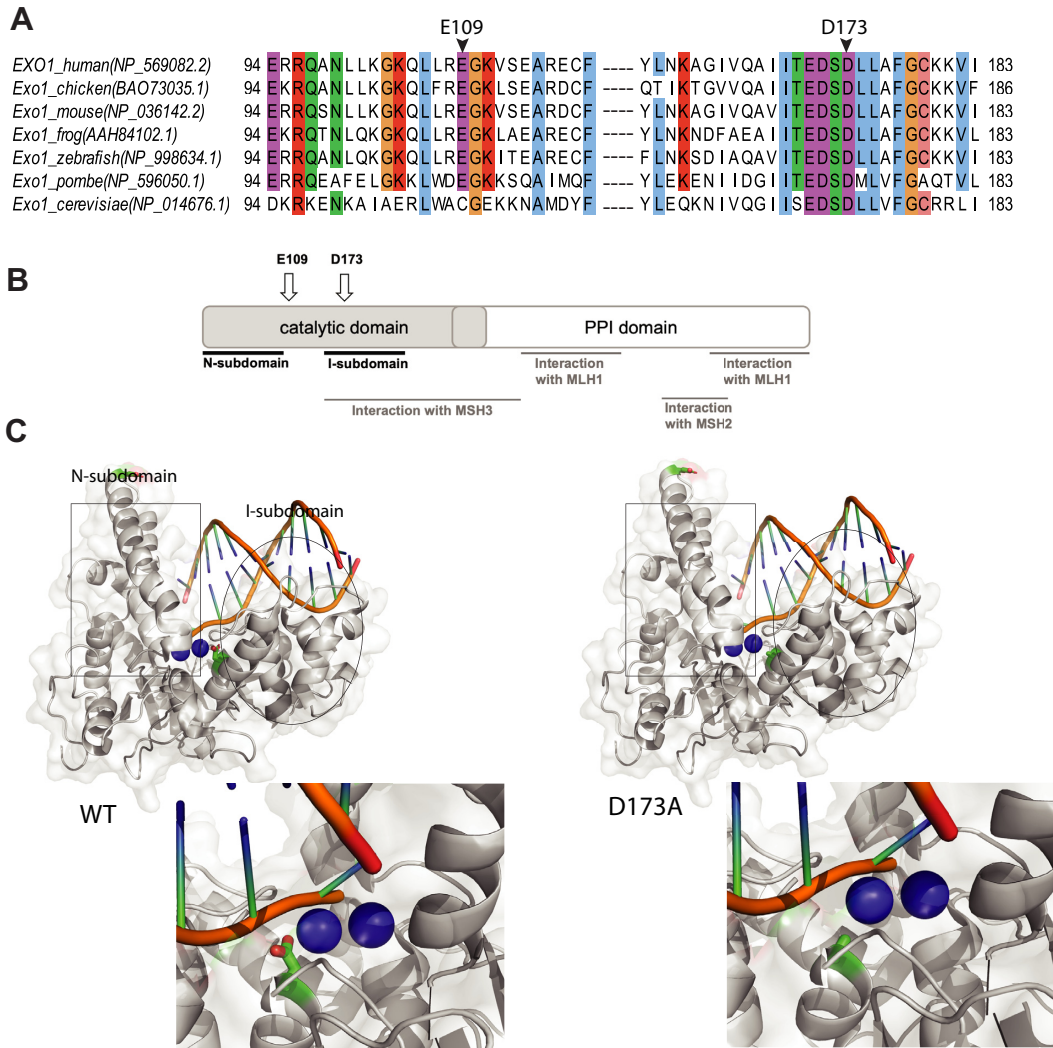


Figure 1. Modeling EXO1 mutations in mice. (A) Jalview ClustalW alignment of EXO1 from the denoted species shows high evolutionary conservation of the D173 residue. (B) Schematic structure depicting human EXO1 domains and binding partners MSH3, MSH2 and MLH1 which help mediate some of EXO1 non-catalytic scaffolding functions. (C) Crystal structure of the N-terminal nuclease (enzymatic) domain (dark grey) of human EXO1 (left), with the inset showing a 180° rotation of the active site; and D173A modeled structure (right), with the inset showing a 180° rotation of the active site. Active site metals shown in blue. The RMSD of the D173A crystal structure and the pymol modeled D173A structure (based on WT) is 0.66. As a result, a modeled D173A structure was presented to better demonstrate the active site metals (PDB: 3QEB). The insets highlights the difference between the proximity of the metal ions (2 cyan circles) in the active site to the acidic D173 amino acid residue (green and red) compared to the neutral A173 amino acid residue (green) mutation.

from *Exo1*^{+/+}, *Exo1*^{DA/DA} and *Exo1*^{-/-} mice and quantified chromosomal breaks in metaphase spreads (Figure 2B). Compared to control *Exo1*^{+/+}, both *Exo1*^{-/-} and *Exo1*^{DA/DA} MEFs exhibited a similar increase in the percentage of cells carrying chromosomal breaks, suggesting that EXO1 nuclease is also essential for DSB repair and chromosomal stability. To examine whether the accumulation of these DSBs responded to defects in EXO1 functions during end resection to initiate DSB repair, we exposed *Exo1*^{+/+}, *Exo1*^{DA/DA} and *Exo1*^{-/-} primary MEFs to camptothecin (CPT), which induces DSBs specifically in S-phase as a result of increased replication fork collapse intermediates (5). We then investigated the frequency and co-localization in foci of hyperphosphorylated RPA (S4/S8-pRPA) and γH2AX, which are targeted by DNA damage-activated protein ki-

nases of the PI3-family like ATM/ATR as a reaction at DSBs (Figure 2C). This allowed us to score DNA end resection events during DSB repair, where both *Exo1*^{-/-} and *Exo1*^{DA/DA} MEFs showed significantly reduced co-localization of activated pRPA-S4/S8 and γH2AX (Figure 2C). These results indicate impaired DSB-resection in response to CPT treatment and suggest a critical role for the catalytic activity of EXO1 during DSB repair in mitotic cells.

MMR proteins also play a critical role in mediating adequate DDR signaling following genotoxic stress either directly by acting as DNA damage sensors to activate DDR signaling networks (direct signaling model) or indirectly by sequentially escalating a mutation in a ssDNA intermediate to make a dsDNA break, which in turn triggers cell cycle arrest and cell death (futile cycle model) (48). To in-

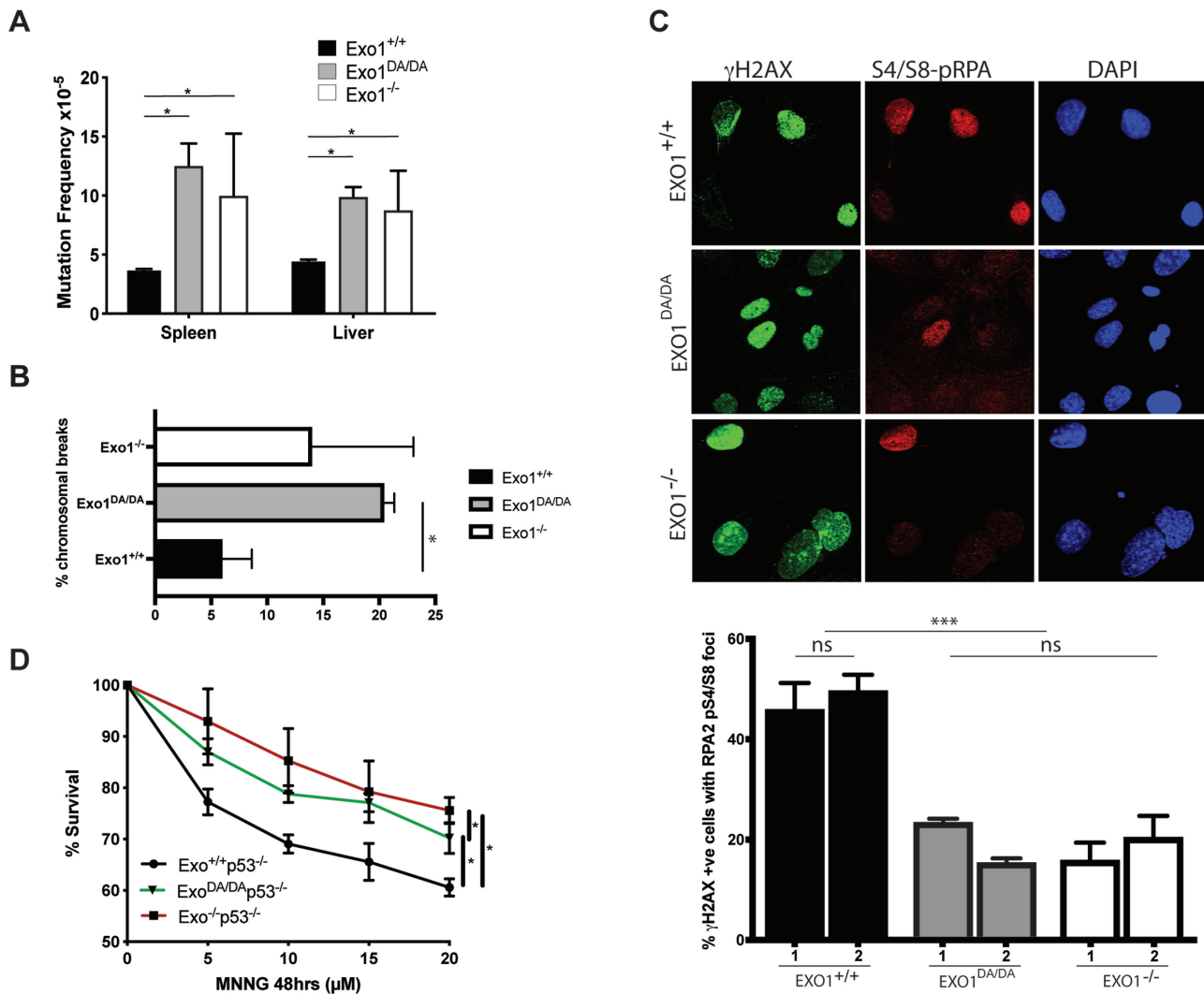


Figure 2. *In vivo* nuclease activity of EXO1 is required for canonical DDR. (A) *cll* reporter gene mutation frequencies in spleen and liver of *Exo1*^{+/+}, *Exo1*^{DA/DA}, and *Exo1*^{-/-} mice (mice/genotype). Mutation frequency is increased by two- to threefold in *Exo1*^{-/-} and *Exo1*^{DA/DA}. (B) Quantification of the number of chromosomal breaks from metaphase spreads of the denoted *Exo1* genotypes. At least two independent cell lines we used per genotype and more than 100 cells were counted per cell line. Significance was established using *t*-test (**P* < 0.01). (C) Representative photographs showing γH2AX, pS4/S8-RPA2, and DAPI stained MEFs after camptothecin treatment (2 h, 1 μM) of the indicated genotypes. (Mag: 1000×; >80 cells were visualized per genotype from three independent experiments). Histogram of the rates of γH2AX-positive (DSB marker) cells with RPA2-pS4/S8 foci (ssDNA marker) in MEFs of the indicated genotypes. ns: not significant; ****P* < 0.001. (D) Cellular survival curves of MEFs from *Exo1*^{+/+}, *Exo1*^{DA/DA} and *Exo1*^{-/-} mice in a p53-null background following 48h treatment with the denoted concentration of MNNG (x-axis). Error bars represent ± SD; ns: not significant; **P*-value < 0.01.

investigate whether the EXO1^{D173A} mutation could impair the eliciting of a G2-phase checkpoint arrest and apoptosis in response to S_N1 DNA methylators such as MNNG (49,50), we compared the survival of immortalized MEFs on a p53^{-/-} background isolated from *Exo1*^{+/+}/p53^{-/-}, *Exo1*^{DA/DA}/p53^{-/-} and *Exo1*^{-/-}/p53^{-/-} mice. We found that *Exo1*^{-/-} and also *Exo1*^{DA/DA} p53-deficient MEFs, although slightly less robustly in the *Exo1*^{DA/DA} mutants, displayed increased resistance to MNNG treatment compared to *Exo1*^{+/+} MEFs, suggesting inefficient DDR signaling in both EXO1 mutant backgrounds (Figure 2D). In conjunction with previous mechanistic studies showing the emergence of ssDNA and dsDNA breaks following MNNG exposure (30–32), these results indicate that the nuclease activity of EXO1 facilitates MMR-mediated DDR signaling.

EXO1 catalytic function is important for survival and tumor suppression

DNA mismatches and DSBs are considered the most abundant and harmful of all genotoxic lesions, respectively. Failure to adequately repair these lesions can have severe adverse effects on organisms, including genomic instability and induction of tumorigenesis (51–53). To study the long-term effects of EXO1 nuclease inactivation on survival and cancer susceptibility, *Exo1*^{+/+}, *Exo1*^{-/-} and *Exo1*^{DA/DA} mouse cohorts were monitored for a period of up to 26 months. While *Exo1*^{+/+} mice exhibited the expected overall survival with 50% of mice still alive at 24 months of age, both *Exo1*^{-/-} and *Exo1*^{DA/DA} mice had a comparable decreased survival rate with 50% of mice dead at 16

months of age (Figure 3A). These accelerated death rates in *Exo1*^{-/-} and *Exo1*^{DA/DA} mice were due to increased cancer predisposition at a comparable incidence (Figure 3B). The majority of *Exo1*^{DA/DA} mice died of lymphoma (58%, *n* = 14/24) between six and 22 months of age (Figure 3C, D). In addition, three mice developed gastrointestinal adenomas (10%, *n* = 3/24) and two mice developed sarcomas (8%, *n* = 2/24). In two mice, both lymphoma and sarcoma or lymphoma and fibroma were found. Five mice died before an autopsy could be performed (21%, *n* = 5/24). The tumor spectrum on *Exo1*^{-/-} was largely identical to that of *Exo1*^{DA/DA} mice (Figure 3C,D). In addition, similar to *Exo1*^{-/-}/*p53*^{-/-} mice, the introduction of a p53 knockout allele led to the rapid deaths of *Exo1*^{DA/DA}/*p53*^{-/-} mice between two to three months of age due to the development of T cell lymphoma (100%, *n* = 17/17) ((5) and not shown). Taken together, these results indicate that an intact nuclease activity is essential for EXO1 tumor suppressor functions.

Catalytic and structural functions of EXO1 are required for non-canonical DDR during antibody diversification

To delineate the precise contribution of EXO1 structural and/or catalytic functions during SHM, we examined error-prone repair of the VH186.2 heavy chain variable region during primary immune responses in the *Exo1*^{+/+} (*n* = 7), *Exo1*^{DA/DA} (*n* = 8) and *Exo1*^{-/-} (*n* = 3) cohorts (Figure 4A and B). In the absence of either the EXO1 protein or its nuclease activity, a significant imbalance of mutations at G:C and A:T pairs was revealed when frequencies of mutation were compared to those normally observed in *Exo1*^{+/+} mice. While mutations at A:T pairs and error-prone Polη hotspots were significantly reduced, the remaining mutations were not only restricted but also increased at G:C pairs and AID hotspots in both *Exo1*^{-/-} and *Exo1*^{DA/DA} mice (Figure 4A). This pattern of nucleotide substitutions strongly suggests that G:C mutations are due to replication over the initial AID-induced U:G lesion without proper EXO1-dependent resection of the surrounding area and, therefore, without the consequent induction of A:T mutations by the recruitment of error-prone DNA polymerases like Polη. Interestingly, the latter defect in error-prone repair at A:T sites was less dramatic in the presence of the mutant EXO1^{DA} protein than in its complete absence (Figure 4A), suggesting that some intermediate scaffolding functions might still persist in *Exo1*^{DA/DA} B cells. Consistently, while a reduction in the spread of A:T mutations across the length of the VH186.2 region, specially at Polη hotspots, could be observed in both EXO1-compromised models, *Exo1*^{-/-} mice showed a more clear altered phenotype with its few remaining A:T mutations distributed around CDR2 (Figure 4B). On the other hand, the overall distribution and preference for mutations at G:C sites in the CDRs was maintained and even increased at non-hotspot G:C sites in *Exo1*^{-/-} and *Exo1*^{+/+} mice (Figure 4B). Overall, analysis of *in vivo* SHM at immunoglobulin genes suggests that the structural and enzymatic functions of Exo1 work in tandem to provide adequate error-prone MMR around AID-induced U:G mismatches.

In B lymphocytes, generating and resolving DSB intermediates are critical to ensure diversity of antibody effector functions through CSR (53–56). To determine whether the aforementioned lack of adequate ssDNA generation observed in EXO1 nuclease-deficient cells (Figure 2) bears any physiological cellular phenotype in B cells, we conducted *ex vivo* CSR experiments where DSBs at Ig switch regions are obligate intermediates in the isotype recombination process (53). To this end, B cell splenocytes were isolated from *Exo1*^{+/+} (*n* = 8), *Exo1*^{-/-} (*n* = 5) and *Exo1*^{DA/DA} (*n* = 8) mice and subjected to lipopolysaccharide (LPS) to induce IgM to IgG3 isotype switching or LPS and interleukin-4 (IL-4) to induce IgM to IgG1 isotype switching *ex vivo* (Figure 4C). Notably, both *Exo1* mutant cohorts exhibited a significant decrease in CSR efficacy towards both IgG3 and IgG1, compared to *Exo1*^{+/+} cohorts (Figure 4C and D), suggesting that EXO1 nuclease activity is critical for CSR. Next, to further explore whether EXO1 nuclease was required not only to generate the switch region DSBs themselves but also to resolve them, we cloned and sequenced Sμ-Sγ3 junctions from *Exo1*^{+/+} and *Exo1*^{-/-} and *Exo1*^{DA/DA} mutant splenic B cells stimulated with LPS plus IL-4 for 72 h. Switch region DSBs are known to be primarily resolved by classical NHEJ (cNHEJ), though a significant subset is also repaired through microhomology-mediated alternative-NHEJ (alt-EJ), where between 1 to 30 base pairs of ssDNA microhomologies flanking the AID-induced DSB guide the aNHEJ repair process (57,58). We could observe that Sμ-Sγ3 junctions in *Exo1*^{DA/DA} cells were different from those in *Exo1*^{+/+} or *Exo1*^{-/-} cells (Figure 4E). While *Exo1*^{+/+} cells showed the expected range of 2–20bp microhomology at Sμ-Sγ3 junctions, *Exo1*^{-/-} and *Exo1*^{DA/DA} cells exhibited a slight decrease in long microhomologies. Furthermore, *Exo1*^{DA/DA} cells were further skewed towards the use of blunt joints, with a clear increase in the number and length of insertions compared to the other two groups (Figure 4E, inset). This resembles the phenotype previously observed with the depletion of the DNA end-processing factor CtIP (59), although this notion has now been contested (60). Taken together, these results appear to suggest that while EXO1 nuclease activity contributes to the end resection mechanisms that promote microhomology-mediated aNHEJ during CSR, a catalytically-dead protein may interfere with other factors that otherwise might participate and partially compensate during aNHEJ in the complete absence of EXO1.

The structural function of EXO1, but not its catalytic activity, is critical for meiosis

Like CSR, meiosis is another example of beneficial DSBs in normal physiology. We had previously shown that *Exo1*^{-/-} mice of both sexes were sterile (5). Interestingly, *Exo1*^{DA/DA} male and female mice are fertile, suggesting normal meiotic progression. To observe crossover events in pachynema, we employed two well-characterized markers of these sites: MLH1 and CDK2 (61–63), which colocalize on the paired chromosomes and the telomeres during meiotic crossing over of mouse cells. In all our genotypic cohorts, MLH1

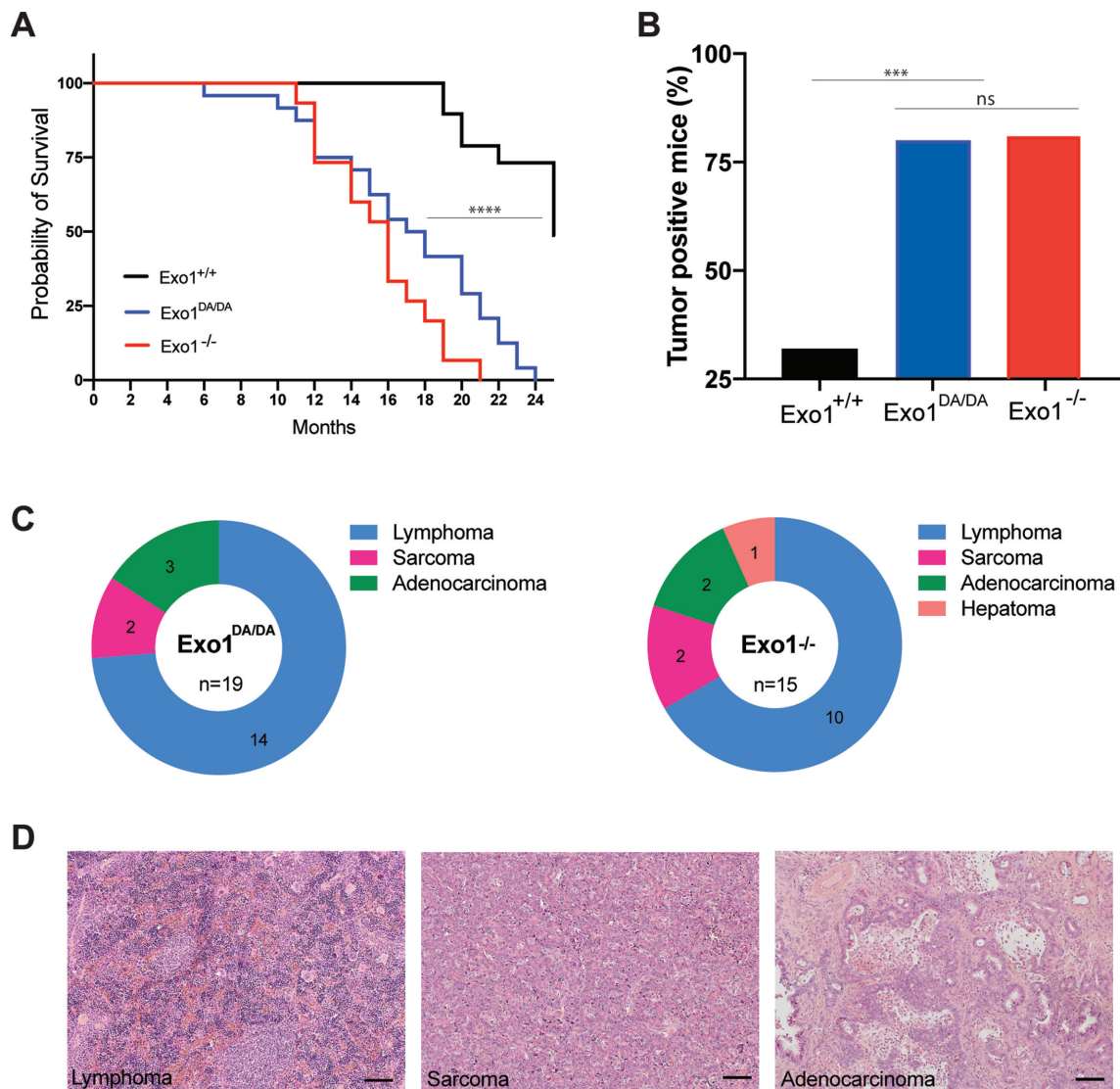


Figure 3. The role of EXO1 nuclease-dead mutant on tumorigenesis. (A) Animal survival curve of the denoted genotypes showing faster death of EXO1^{DA/DA} ($n = 24$) and EXO1^{-/-} ($n = 15$) mice compared to WT ($n = 47$). ***P-value < 0.0001. (B) Exo1^{-/-} ($n = 15$) and EXO1^{DA/DA} ($n = 19$), which, as shown in (B), had a considerably higher tumor positive incidence compared to WT ($n = 20$). ***P-value < 0.001; ns: not significant. (C) representative distribution of the tumor profiles of the samples quantified in (B). (D) representative H&E stains of the tumor samples denoted in (C). Bar is 50 μ m.

and CDK2 localized to crossover sites and CDK2 additionally localized to telomeres (Figure 5). These crossover markers remained associated with SYCP3, chromosome cores, and/or telomeres at a frequency and intensity that is indistinguishable between *Exo1*^{+/+} and *Exo1*^{DA/DA} and *Exo1*^{DA/DA} mice (Figure 5), indicating normal meiosis progression through prophase-I. In addition, by analyzing and quantifying metaphase spreads, we could show that the number of chiasmata and bivalent chromosomes was also comparable in all groups (Figure 5). This is in contrast to our previous findings in *Exo1*^{-/-} mice in which metaphase spreads predominantly displayed abnormal spindle structures with mostly achiasmatic univalent chromosomes (5). Altogether, these results suggest that EXO1 nuclease activity, but not its structural function, is dispensable during meiotic progression.

DISCUSSION

As exemplified in this study, EXO1 fulfills many complex even contradictory functions ranging from maintaining genomic stability to promoting immune diversity as well as meiotic recombination. We specifically were interested in dissecting the distinct contributions of the catalytic and scaffolding functions of EXO1 in each of these genome maintenance processes *in vivo* by comparing the phenotypes of *Exo1*^{+/+}, *Exo1*^{DA/DA} and *Exo1*^{-/-} mice. The N-terminal fragment of EXO1 encodes the nuclease domain bearing the HNPCC-associated E109K mutation, which apparently compromised EXO1 nuclease activity *in vitro* when assayed using tagged N-terminal fragments of both mouse and human EXO1 (5,29). However, recent studies in which the authors were finally able to isolate the full-length human EXO1^{E109K}, without using any N-terminal tag, showed

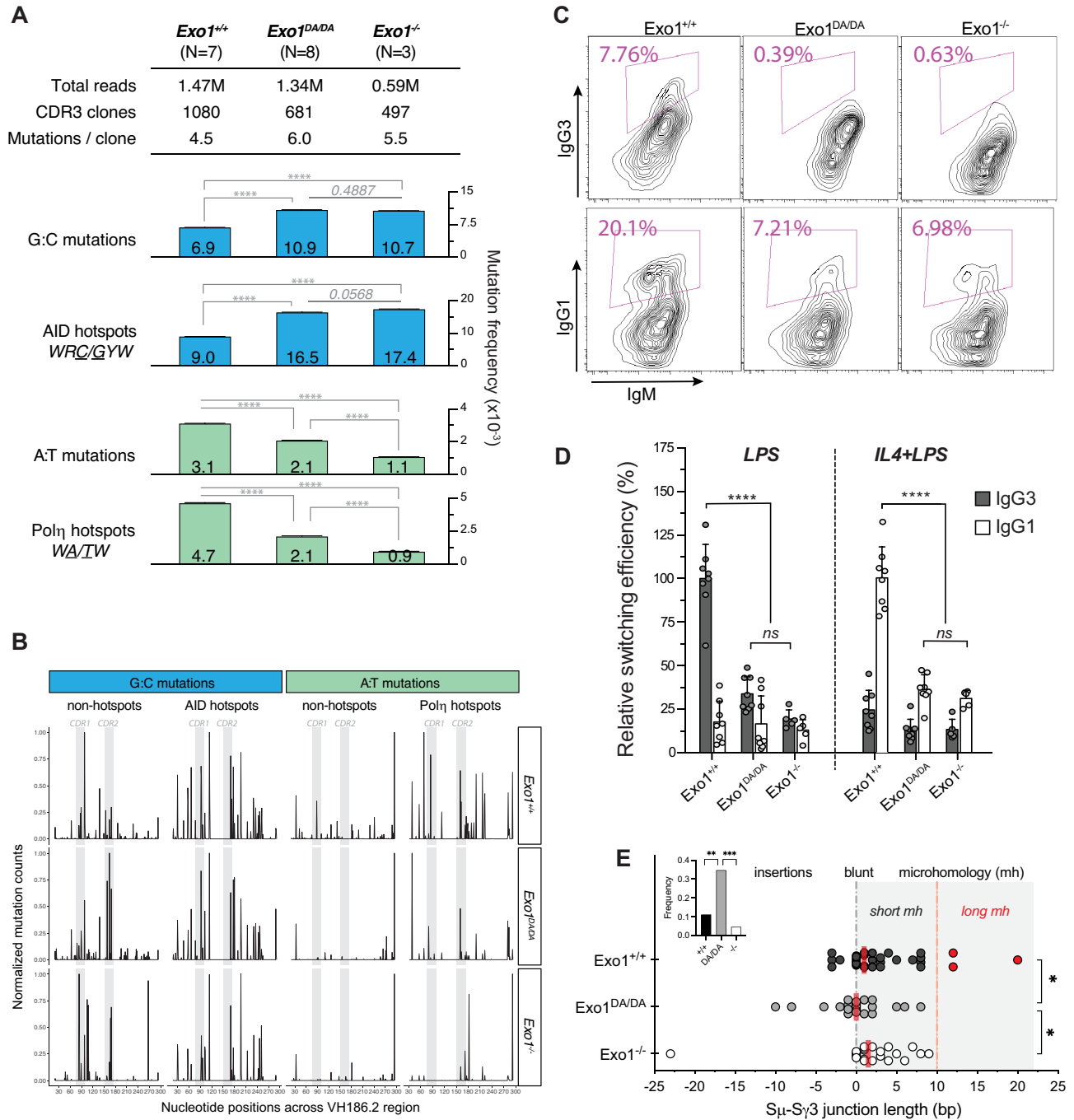


Figure 4. Abrogation of EXO1 or its nuclease activity impairs antibody diversification. **(A)** Global analysis of *in vivo* SHM at the VH186.2 region during primary response of NP-immunized mice. For comparison of average mutation frequencies of *Exo1^{-/-}* and *Exo1^{DA/DA}* to WT, contingency tables were assigned to the mutation data and Pearson's Chi-squared test with Yates' continuity correction was applied. ****P-value < 0.0001. **(B)** Distribution of unique mutations across the VH186.2 region and its CDRs as observed during the 1000 iterations that were performed for each genotype group and normalized within each mutation subtype to maximum of 1. Mutations in G:C or A:T residues are split and are colored according to the hotspot definition for AID (WRC/GYW) or poln (WA/TW). **(C)** Representative flow cytometry profiles analyzed by FloJo showing CSR efficiency in the three denoted mouse cohorts. **(D)** Summary of *ex vivo* relative CSR efficiencies in WT (*n* = 8), *Exo1^{DA/DA}* (*n* = 8) and *Exo1^{-/-}* (*n* = 5) mice. As reference, mean efficiency of switching in the WT group to IgG3 after stimulation with LPS or to IgG1 after stimulation with IL4 + LPS were defined as 100% in two independent experiments. Relative percentages of switching to each isotype and stimulation cocktail are depicted by dots, and bars represent mean ± SD of the replicates. The background switching to IgG1 after LPS stimulation and to IgG3 after IL4 + LPS stimulation are also shown. ****P-value < 0.0001; ns: not significant. **(E)** Distribution of blunt breakpoints (0 bp), microhomologies (from 1 to >10 bp in length) or insertions (represented as negative integers) in S μ -S γ 3 switch junctions cloned and sequenced in *ex vivo* LPS-stimulated splenic B cells from the different genotype groups (*n* > 22 per group). Dots represent individual S μ -S γ 3 switch junctions, and red bars denote median length in the distribution of blunt junctions, microhomologies and insertions within each group. The nonparametric Kruskal-Wallis test followed by the Dunn's post-tests were used to explore these distributions. Long microhomologies (>10 bp in length) in the wild-type group are highlighted in red, and increased frequency of insertions (as explored by Fisher's exact tests) in the *Exo1^{DA/DA}* group is highlighted as an inset plot. ***P-value < 0.001.

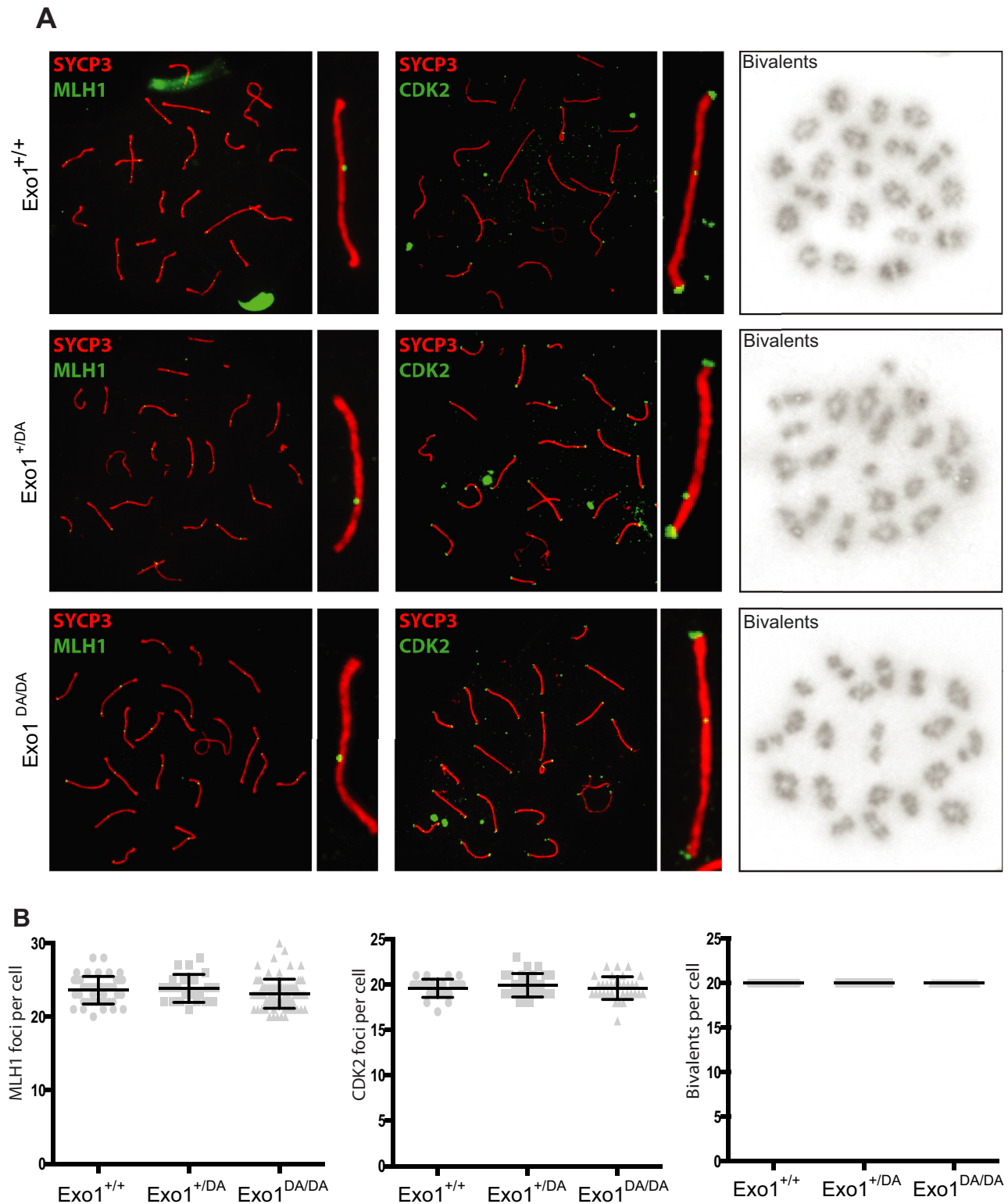


Figure 5. EXO1 nuclease activity is dispensable for meiosis during spermatogenesis. (A) MLH1 and CDK2 (green) localize to the synaptonemal complex SYCP3 (red) in WT (top), *Exo1*^{DA/+} (middle), and *Exo1*^{DA/DA} (bottom) in pachytene spermatocytes. Left-hand panels show merged red and green channels, while the right-hand inset shows representative merged channels of a sample chromosome showing MLH1 and CDK2 at crossover sites and additional telomere-associated CDK2. Most right panels show the quantification of bivalent chromosome pairing during pachytene. (B) charts show the quantification of foci for each genotype at pachynema. Counts for WT, *Exo1*^{DA/+} and *Exo1*^{DA/DA} are not statistically different from each other (by unpaired *t*-test with Welch's correction). The number of cells counted is depicted in grey (at least 45 cells per genotype). Values given are the number of foci per nucleus \pm S.D.

retention of significant nuclease activity (30,31). A possible explanation for these conflicting observations could be related to structural instability in the EXO1^{E109K} mutant N-terminal fragment, together with the presence of a 6xHis-tag used for purification, which could both interfere with EXO1 enzymatic activity. Consistent with these observations, canonical and non-canonical MMR (SHM and CSR in B cells) were not affected in *Exo1*^{EK/EK} mice. Yet, *Exo1*^{EK/EK} mice showed increased cancer predisposition and displayed defective DDR and DSBR (5). This unexpected limited phenotype might be related to the recently identified overlap of the EXO1 nuclease domain with a PAR-interaction (PIN) domain, which has been proposed to facilitate recruitment and resection functions of EXO1 during DSBR (64). Here, we bypassed those issues by creating and characterizing a novel *Exo1*^{DA/DA} knock-in mouse model carrying the nuclease-dead EXO1-D173A mutation (33,34) that represented an optimal *in vivo* system allowing us to more precisely dissect potential structural and catalytic functions of EXO1 in different mammalian genome maintenance processes. Although a miniscule residual nuclease activity was observed in purified human EXO1-DA *in vitro* (28,29), this does not seem to translate into *in vivo* function in either yeast or humans (33–35).

Our results suggest that EXO1 may have a 3-tier function in the various DDR processes in which it participates. This 3-tier approach depends on differential requirements for the catalytic vs. scaffolding domains of EXO1: catalytic, scaffolding, or both. They also seem to suggest that the complexity of the DDR mechanism somehow directs what activities of EXO1 are needed. In addition to the differential role of EXO1 nuclease domain in various DDR pathways, recent yeast studies have highlighted the importance of EXO1's unstructured C terminal domain for critical protein-protein interactions such as the binding with MSH2 and MLH1 (17,18,65). These studies also highlight the potential of EXO1 independent resection via either Rad27 or MLH1-PMS2 during MMR (17,18). Our proposed rationale for EXO1's 3-tier function is in agreement with these studies and provide what is arguably the first demonstration of the biological importance of EXO1 scaffold function.

In tier-1, we show here that the role of EXO1 in canonical DDR pathways, such as error-free MMR and DSBR, are primarily mediated by EXO1 nuclease activity. In our assay measuring the MMR of spontaneous genomic mutations, mutation frequencies were similar between EXO1 depleted (*Exo1*^{-/-}) and EXO1 nuclease-dead (*Exo1*^{DA/DA}) mouse models. Similarly, DSBR analyses through DNA end resection assays showed indistinguishable responses in these same mouse models. Furthermore, *Exo1*^{DA/DA} and *Exo1*^{-/-} mice exhibited similarly reduced survival due to the development of lymphomas, sarcomas, and gastrointestinal adenocarcinomas. These data suggest that error-free DNA repair through MMR and DSBR requires EXO1 resection activity and little or no distinct effects from its scaffolding function. Or that these two activities are completely epistatic or redundant in these particular repair mechanisms.

That EXO1 is involved in two dichotomous DDR pathways, namely error-free and error-prone MMR and DSBR, has been well documented. EXO1 can also be involved in

other repair mechanisms such as post-replication repair but we focus on the former two in this study (66,67). SHM and CSR are two immune diversification mechanisms in B cells that specifically require non-canonical error-prone MMR and DSBR, respectively (68,69). What was unexpected, though, is that during these two error-prone DNA repair processes, EXO1 seems to depend on both its catalytic and non-catalytic scaffolding functions (tier-2). EXO1 seems to initiate both SHM and CSR processes through its nuclease activity in the first instance. That is why our SHM analysis revealed a general increase in replication-fixed unrepaired C:G mutations and a decrease in error-prone introduced A:T mutations in both *Exo1*^{DA/DA} and *Exo1*^{-/-} models, which is in line with other MMR factor deletions, including MSH2 or MSH6 depletion (68,69). Likewise, the overall decrease of IgM to IgG1 and IgG3 switching was comparable in the two mutant *Exo1* mouse models which in turn are comparable to canonical MMR factors MSH2/MSH6 double deletion (69), suggesting that the overall instigation of DSBs at switch junctions and their resolution by cNHEJ highly depend on EXO1 nuclease activity. However, upon further analysis of SHM mutation patterns, we could observe that while the increase in G:C mutations fixed by replication at AID-associated hotspot mutations were comparable between *Exo1*^{DA/DA} and *Exo1*^{-/-}, the recruitment of error-prone mechanisms and Polη-mediated mutations at A:T sites where only intermediary impaired in *Exo1*^{DA/DA} compared to *Exo1*^{-/-} B cells. These data suggest that during complex error-prone MMR repair, additional scaffolding functions of EXO1 are also needed. The rationale for how that could happen include: i) a passive reason, where nuclease-dead EXO1 could be recruited to sites of DNA mismatches, but its lack of nuclease activity could act as a dominant negative, thereby preventing subsequent downstream MMR signaling. However, this rationale should also apply for canonical MMR as well, which we did not observe in our assays. Another explanation could be the result of ii) an active scaffolding function of EXO1, which diversifies its function. In this sense, PCNA was shown to bind and increase EXO1 processivity at DSB sites (17,18,70,71), and PCNA is required for A:T mutagenesis during error-prone MMR through its recruitment of Polη (21). It is plausible that PCNA might still be recruited by the retained scaffolding functions of the mutant EXO1^{DA} protein and result in partial functionality, which would not otherwise occur in the complete absence of EXO1. Hence, such a scaffolding function might contribute to the intermediate phenotype we observed in *Exo1*^{DA/DA} mice during the error-prone MMR phase that introduces A:T mutations during SHM in B cells.

Further supporting tier-2 in B cells, we also observed independent contributions from the nuclease and scaffolding functions of EXO1 during CSR. Two variants of error-prone DSBR, namely cNHEJ and microhomology-mediated alt-EJ, are known to contribute during CSR, which can be roughly dissected by studying antibody S-S junctions (53). Our data highlight that *Exo1*^{DA/DA} mice show a clear preference for blunt-end NHEJ with an average of 0 bp S-S overlap compared to *Exo1*^{-/-} B cells that show about 2–3 bp of S-S microhomology overlap. *Exo1*^{DA/DA} cells also have a decreased propensity for long microhomologies at the S-S junctions and at the same time

an increased propensity for insertions. This again could be explained by a (i) passive dominant-negative effect of the *Exo1^{DA/DA}* protein manifesting longer than usual residency period on DSB sites. But it could also be argued that (ii) in complex scenarios such as during the competition between NHEJ and alt-EJ at S–S junctions, EXO1 can fulfill a more complex role than the basic nuclease activity primarily required for HR. This complexity could be mostly attributed to high selection for NHEJ and alt-EJ at S–S junctions where EXO1 is not expected to fulfill a catalytic role but rather a scaffolding one. The recruitment of EXO1 by CtIP or DNA2 nucleases which are shown to bind, recruit, and synergize with EXO1 nuclease activity, might contribute to this S–S junction process through an EXO1 scaffolding role.

Finally, our data show that while EXO1 catalytic activity is completely dispensable for apparently normal meiotic progression, it is critically dependent on the presence of EXO1 protein. This tier-3 scaffolding EXO1 function is surprising because meiosis is considered a specialized and unique form of a hybrid between error-prone HR and MMR which contributes to organismal diversity (72,73). It is not clear why EXO1 nuclease activity is not required in meiosis, but it is consistent with budding yeast studies, which confirm our findings and further suggest that the nickase activity of the MLH1–MLH3 complex is responsible for crossover formation; albeit dependent on EXO1 protein but not on EXO1 nuclease activity (34). This could explain why both sexes of *Exo1^{-/-}* mice are sterile (74). Furthermore, recent studies in *Exo1^{DA/DA}* mice showed that EXO1 is not an important contributor to 5' to 3' end resection in murine meiosis or is substantially redundant with other resection activities (74). In fact, recent studies suggest that EXO1 facilitates the MLH1–MLH3 nuclease activity in meiosis (33,75) and EXO1 protein but not its nuclease activity might mediate the DNA nicks protection during meiotic crossover (76).

In conclusion, we show that EXO1 fulfills 3-tier activity in genome maintenance depending on the process it is involved in and the complexity of that DNA repair process. One tier is predominantly dependent on the nuclease function of EXO1 such as canonical MMR and DSBR. Another tier depends primarily on the scaffolding function, such as meiosis, and a final tier depends on the concerted act of nuclease and scaffolding functions during non-canonical repair processes in B cells for antibody diversification.

DATA AVAILABILITY

Sequencing data are available through GEO accession GSE183344. Mutation analysis scripts are on Github: <https://gitlab.com/maccarthyslab/SHMPrep> and <https://gitlab.com/maccarthyslab/SHMServer>.

SUPPLEMENTARY DATA

[Supplementary Data](#) are available at NAR Online.

FUNDING

NIH [CA72649, CA102705 to M.D.S., 1R01AI132507-01A1 to M.D.S. and T.M., CA76329, CA222358,

CA248536 to W.E.]; UZH-URPP, BBSRC [BB/N017773/2]; SNF [CRSK-3_190550]; Vontobel [41309 to R.C.]; Agencia Estatal de Investigación [PID2020-112994RB-I00/AEI/10.13039/501100011033]; Ministerio de Economía, Industria y Competitividad [SAF2017-82309-R/MINECO/AEI/FEDER, EU to S.R.]; M.D.S. is supported by the Harry Eagle Chair, provided by the National Women's Division of the Albert Einstein College of Medicine; S.R. was supported by Ministerio de Economía y Competitividad through Programa Ramón y Cajal [RYC-2014-16399/MEC]; R.C. was supported by AMS [SBF001\1005]; R.B.M. was supported by EPSRC [EP/M506527/1]. Funding for open access charge: NIH; SNF; BBSRC.

Conflict of interest statement. SR receives research support from Roche/Genentech (imCORE) and Gilead.

REFERENCES

- Szankasi, P. and Smith, G.R. (1995) A role for exonuclease I from *S. pombe* in mutation avoidance and mismatch correction. *Science*, **267**, 1166–1169.
- Szankasi, P. and Smith, G.R. (1992) A single-stranded DNA exonuclease from *Schizosaccharomyces pombe*. *Biochemistry*, **31**, 6769–6773.
- Käslin, E. and Heyer, W.D. (1994) A multifunctional exonuclease from vegetative *Schizosaccharomyces pombe* cells exhibiting in vitro strand exchange activity. *J. Biol. Chem.*, **269**, 14094–14102.
- Bardwell, P.D., Woo, C.J., Wei, K., Li, Z., Martin, A., Sack, S.Z., Parris, T., Edelman, W. and Scharff, M.D. (2004) Altered somatic hypermutation and reduced class-switch recombination in exonuclease 1-mutant mice. *Nat. Immunol.*, **5**, 224–229.
- Schaetzlein, S., Chahwan, R., Avdievich, E., Roa, S., Wei, K., Eoff, R.L., Sellers, R.S., Clark, A.B., Kunkel, T.A., Scharff, M.D. *et al.* (2013) Mammalian Exo1 encodes both structural and catalytic functions that play distinct roles in essential biological processes. *Proc. Natl. Acad. Sci. U.S.A.*, **110**, E2470–E2479.
- Lee, B.I. and Wilson, D.M. (1999) The RAD2 domain of human exonuclease 1 exhibits 5' to 3' exonuclease and flap structure-specific endonuclease activities. *J. Biol. Chem.*, **274**, 37763–37769.
- Qiu, J., Qian, Y., Chen, V., Guan, M.X. and Shen, B. (1999) Human exonuclease 1 functionally complements its yeast homologues in DNA recombination, RNA primer removal, and mutation avoidance. *J. Biol. Chem.*, **274**, 17893–17900.
- Orans, J., McSweeney, E.A., Iyer, R.R., Hast, M.A., Hellinga, H.W., Modrich, P. and Beese, L.S. (2011) Structures of human exonuclease 1 DNA complexes suggest a unified mechanism for nuclease family. *Cell*, **145**, 212–223.
- Sertic, S., Quadri, R., Lazzaro, F. and Muzi-Falconi, M. (2020) EXO1: a tightly regulated nuclease. *DNA Repair (Amst)*, **93**, 102929.
- Mimitou, E.P. and Symington, L.S. (2009) DNA end resection: many nucleases make light work. *DNA Repair (Amst)*, **8**, 983–995.
- Keelagher, R.E., Cotton, V.E., Goldman, A.S.H. and Borts, R.H. (2011) Separable roles for Exonuclease I in meiotic DNA double-strand break repair. *DNA Repair (Amst)*, **10**, 126–137.
- Tishkoff, D.X., Boerger, A.L., Bertrand, P., Filosi, N., Gaida, G.M., Kane, M.F. and Kolodner, R.D. (1997) Identification and characterization of *Saccharomyces cerevisiae* EXO1, a gene encoding an exonuclease that interacts with MSH2. *Proc. Natl. Acad. Sci. U.S.A.*, **94**, 7487–7492.
- Tran, P.T., Simon, J.A. and Liskay, R.M. (2001) Interactions of Exo1p with components of MutL α in *Saccharomyces cerevisiae*. *Proc. Natl. Acad. Sci. U.S.A.*, **98**, 9760–9765.
- Tishkoff, D.X., Amin, N.S., Viars, C.S., Arden, K.C. and Kolodner, R.D. (1998) Identification of a human gene encoding a homologue of *Saccharomyces cerevisiae* EXO1, an exonuclease implicated in mismatch repair and recombination. *Cancer Res.*, **58**, 5027–5031.
- Schmutte, C., Marinescu, R.C., Sadoff, M.M., Guerrette, S., Overhauser, J. and Fishel, R. (1998) Human exonuclease I interacts

- with the mismatch repair protein hMSH2. *Cancer Res.*, **58**, 4537–4442.
16. Amin, N.S., Nguyen, M.-N., Oh, S. and Kolodner, R.D. (2001) exo1-Dependent Mutator mutations: model system for studying functional interactions in mismatch repair. *Mol. Cell. Biol.*, **21**, 5142–5155.
 17. Goellner, E.M., Smith, C.E., Campbell, C.S., Hombauer, H., Desai, A., Putnam, C.D. and Kolodner, R.D. (2014) PCNA and Msh2-Msh6 activate an Mlh1-Pms1 endonuclease pathway required for Exo1-independent mismatch repair. *Mol. Cell.*, **55**, 291–304.
 18. Goellner, E.M., Putnam, C.D. and Kolodner, R.D. (2015) Exonuclease 1-dependent and independent mismatch repair. *DNA Repair (Amst.)*, **32**, 24–32.
 19. Kadyrov, F.A., Genschel, J., Fang, Y., Penland, E., Edelman, W. and Modrich, P. (2009) A possible mechanism for exonuclease 1-independent eukaryotic mismatch repair. *Proc. Natl. Acad. Sci. U.S.A.*, **106**, 8495–8500.
 20. Langerak, P., Nygren, A.O.H., Krijger, P.H.L., Van Den Berk, P.C.M. and Jacobs, H. (2007) A/T mutagenesis in hypermutated immunoglobulin genes strongly depends on PCNAK164 modification. *J. Exp. Med.*, **204**, 1989–1998.
 21. Roa, S., Avdievich, E., Peled, J.U., MacCarthy, T., Werling, U., Fei, L.K., Kan, R., Zhao, C., Bergman, A., Cohen, P.E. *et al.* (2008) Ubiquitylated PCNA plays a role in somatic hypermutation and class-switch recombination and is required for meiotic progression. *Proc. Natl. Acad. Sci. U.S.A.*, **105**, 16248–16253.
 22. Zhu, Z., Chung, W.H., Shim, E.Y., Lee, S.E. and Ira, G. (2008) Sgs1 helicase and two nucleases Dna2 and Exo1 resect DNA double-strand break ends. *Cell*, **134**, 981–994.
 23. Mimitou, E.P. and Symington, L.S. (2008) Sae2, Exo1 and Sgs1 collaborate in DNA double-strand break processing. *Nature*, **455**, 770–774.
 24. Nimonkar, A.V., Özsoy, A.Z., Genschel, J., Modrich, P. and Kowalczykowski, S.C. (2008) Human exonuclease 1 and BLM helicase interact to resect DNA and initiate DNA repair. *Proc. Natl. Acad. Sci. U.S.A.*, **105**, 16906–16911.
 25. Hartlerode, A.J. and Scully, R. (2009) Mechanisms of double-strand break repair in somatic mammalian cells. *Biochem. J.*, **423**, 157–168.
 26. Wei, K., Clark, A.B., Wong, E., Kane, M.F., Mazur, D.J., Parris, T., Kolas, N.K., Russell, R., Hou, H., Kneitz, B. *et al.* (2003) Inactivation of exonuclease I in mice results in DNA mismatch repair defects, increased cancer susceptibility, and male and female sterility. *Genes Dev.*, **17**, 603–614.
 27. Wu, Y., Berends, M.J.W., Post, J.G., Mensink, R.G.J., Verlind, E., Van der Sluis, T., Kempinga, C., Gijmns, R.H., Van der Zee, A.G.J., Hollema, H. *et al.* (2001) Germ-line mutations of EXO1 gene in patients with hereditary nonpolyposis colorectal cancer (HNPCC) and atypical HNPCC forms. *Gastroenterology*, **120**, 1580–1587.
 28. Marsolier-Kergoat, M.C., Khan, M.M., Schott, J., Zhu, X. and Llorente, B. (2018) Mechanistic view and genetic control of DNA recombination during meiosis. *Mol. Cell*, **70**, 9–20.
 29. Sun, X., Zheng, L. and Shen, B. (2002) Functional alterations of human exonuclease 1 mutants identified in atypical hereditary nonpolyposis colorectal cancer syndrome. *Cancer Res.*, **62**, 6026–6030.
 30. Shao, H., Baitinger, C., Soderblom, E.J., Burdett, V. and Modrich, P. (2014) Hydrolytic function of Exo1 in mammalian mismatch repair. *Nucleic Acids Res.*, **42**, 7104–7112.
 31. Bregenhorn, S. and Jiricny, J. (2014) Biochemical characterization of a cancer-associated E109K missense variant of human exonuclease 1. *Nucleic Acids Res.*, **42**, 7096–7103.
 32. Tran, P.T., Erdeniz, N., Dudley, S. and Liskay, R.M. (2002) Characterization of nuclease-dependent functions of Exo1p in *Saccharomyces cerevisiae*. *DNA Repair (Amst.)*, **1**, 895–912.
 33. Kulkarni, D.S., Owens, S.N., Honda, M., Ito, M., Yang, Y., Corrigan, M.W., Chen, L., Quan, A.L. and Hunter, N. (2020) PCNA activates the MutL endonuclease to promote meiotic crossing over. *Nature*, **586**, 623–627.
 34. Zakharyevich, K., Ma, Y., Tang, S., Hwang, P.Y.H., Boiteux, S. and Hunter, N. (2010) Temporally and biochemically distinct activities of Exo1 during meiosis: double-strand break resection and resolution of double Holliday junctions. *Mol. Cell*, **40**, 1001–1015.
 35. Mimitou, E.P., Yamada, S. and Keeney, S. (2017) A global view of meiotic double-strand break end resection. *Science*, **355**, 40–45.
 36. Yang, H., Wang, H., Shivalila, C.S., Cheng, A.W., Shi, L. and Jaenisch, R. (2013) XOne-step generation of mice carrying reporter and conditional alleles by CRISPR/cas-mediated genome engineering. *Cell*, **154**, 1370.
 37. Dyaico, M.J., Scott Provost, G., Kretz, P.L., Ransom, S.L., Moores, J.C. and Short, J.M. (1994) The use of shuttle vectors for mutation analysis in transgenic mice and rats. *Mutat. Res. - Fundam. Mol. Mech. Mutagen.*, **307**, 461–478.
 38. Narayanan, L., Fritzell, J.A., Baker, S.M., Liskay, R.M. and Glazer, P.M. (1997) Elevated levels of mutation in multiple tissues of mice deficient in the DNA mismatch repair gene Pms2. *Proc. Natl. Acad. Sci. U.S.A.*, **94**, 3122–3127.
 39. Aouinti, S., Malouche, D., Giudicelli, V., Kossida, S. and Lefranc, M.P. (2015) IMGT/HighV-QUEST statistical significance of IMGT clonotype (AA) diversity per gene for standardized comparisons of next generation sequencing immunoprofiles of immunoglobulins and T cell receptors. *PLoS One*, **10**, e0142353.
 40. MacCarthy, T., Roa, S., Scharff, M.D. and Bergman, A. (2009) SHMTool: a webserver for comparative analysis of somatic hypermutation datasets. *DNA Repair (Amst.)*, **8**, 137–141.
 41. van Oers, J.M.M.M., Edelman, W., Scharff, M.D., Roa, S., Zhao, C., Chahwan, R., Avdievich, E., van Oers, J.M.M.M., Avdievich, E., Zhao, C. *et al.* (2012) The ATPase activity of MLH1 is required to orchestrate DNA double-strand breaks and end processing during class switch recombination. *J. Exp. Med.*, **209**, 671–678.
 42. Kolas, N.K., Svetlanov, A., Lenzi, M.L., Macaluso, F.P., Lipkin, S.M., Liskay, R.M., Grealley, J., Edelman, W. and Cohen, P.E. (2005) Localization of MMR proteins on meiotic chromosomes in mice indicates distinct functions during prophase I. *J. Cell Biol.*, **171**, 447–458.
 43. Oers, J.M.M. Van, Roa, S., Werling, U., Liu, Y., Genschel, J., Hou, H., Sellers, R.S., Van Oers, J.M.M., Roa, S., Werling, U. *et al.* (2010) PMS2 endonuclease activity has distinct biological functions and is essential for genome maintenance. *Proc. Natl. Acad. Sci. U.S.A.*, **107**, 13384–13389.
 44. Holloway, J.K., Sun, X., Yokoo, R., Villeneuve, A.M. and Cohen, P.E. (2014) Mammalian CNTD1 is critical for meiotic crossover maturation and deselection of excess precrossover sites. *J. Cell Biol.*, **205**, 633–641.
 45. Gray, S., Santiago, E.R., Chappie, J.S. and Cohen, P.E. (2020) Cyclin N-Terminal domain-containing-1 coordinates meiotic crossover formation with cell-cycle progression in a cyclin-independent manner. *Cell Rep.*, **32**, 107858.
 46. Desai, A. and Gerson, S. (2014) Exo1 independent DNA mismatch repair involves multiple compensatory nucleases. *DNA Repair (Amst.)*, **21**, 55–64.
 47. Kucherlapati, M.H., Lee, K., Nguyen, A., Clark, A.B., Hou, H., Rosulek, A., Li, H., Yang, K., Fan, K., Lipkin, M. *et al.* (2010) An Msh2 conditional knockout mouse for studying intestinal cancer and testing anticancer agents. *Gastroenterology*, **138**, 993–1002.
 48. Kat, A., Thilly, W.G., Fang, W.H., Longley, M.J., Li, G.M. and Modrich, P. (1993) An alkylation-tolerant, mutator human cell line is deficient in strand-specific mismatch repair. *Proc. Natl. Acad. Sci. U.S.A.*, **90**, 6424–6428.
 49. Cejka, P., Stojic, L., Mojas, N., Russell, A.M., Heinemann, K., Cannavò, E., di Pietro, M., Marra, G. and Jiricny, J. (2003) Methylation-induced G(2)/M arrest requires a full complement of the mismatch repair protein hMLH1. *EMBO J.*, **22**, 2245–2254.
 50. Schroering, A.G., Edelbrock, M., Richards, T.J. and Williams, K.J. (2007) The cell cycle and DNA mismatch repair. *Exp. Cell Res.*, **313**, 292–304.
 51. Zhao, F., Kim, W., Kloeber, J.A. and Lou, Z. (2020) DNA end resection and its role in DNA replication and DSB repair choice in mammalian cells. *Exp. Mol. Med.*, **52**, 1705–1714.
 52. Sheppard, E.C., Rogers, S., Harmer, N.J. and Chahwan, R. (2019) A universal fluorescence-based toolkit for real-time quantification of DNA and RNA nuclease activity. *Sci. Rep.*, **9**, 8853.
 53. Sheppard, E.C., Morrish, R.B., Dillon, M.J., Leyland, R. and Chahwan, R. (2018) Epigenomic modifications mediating antibody maturation. *Front. Immunol.*, **9**, 355.
 54. Morrish, R.B., Hermes, M., Metz, J., Stone, N., Pagliara, S., Chahwan, R. and Palombo, F. (2019) Single cell imaging of nuclear architecture changes. *Front. Cell Dev. Biol.*, **7**, 141.

55. Morrish,R., Yim,K.H.W., Pagliara,S., Palombo,F., Chahwan,R. and Stone,N. (2021) Single cell label-free probing of chromatin dynamics during B lymphocyte maturation. *Front. Cell Dev. Biol.*, **9**, 646616.
56. Martin,A., Chahwan,R., Parsa,J.Y. and Scharff,M.D. (2014) Somatic hypermutation: the molecular mechanisms underlying the production of effective high-affinity antibodies. *Molecular Biology of B Cells. 2nd edn*, 363–388.
57. Maul,R.W. and Gearhart,P.J. (2010) AID and somatic hypermutation. In: *Advances in Immunology*. Academic Press Inc., Vol. **105**, pp. 159–191.
58. Stavnezer,J., Björkman,A., Du,L., Cagigi,A. and Pan-Hammarström,Q. (2010) Mapping of switch recombination junctions, a tool for studying DNA repair pathways during immunoglobulin class switching. In: *Advances in Immunology*. Academic Press Inc., Vol. **108**, pp. 45–109.
59. Lee-Theilen,M., Matthews,A.J., Kelly,D., Zheng,S. and Chaudhuri,J. (2011) CtIP promotes microhomology-mediated alternative end joining during class-switch recombination. *Nat. Struct. Mol. Biol.*, **18**, 75–79.
60. Wang,X.S., Zhao,J., Wu-Baer,F., Shao,Z., Lee,B.J., Cupo,O.M., Rabadan,R., Gautier,J., Baer,R. and Zha,S. (2020) CtIP-mediated DNA resection is dispensable for IgH class switch recombination by alternative end-joining. *Proc. Natl. Acad. Sci. U.S.A.*, **117**, 25700–25711.
61. Ward,J.O., Reinholdt,L.G., Motley,W.W., Niswander,L.M., Deacon,D.C., Griffin,L.B., Langlais,K.K., Backus,V.L., Schimenti,K.J., O'Brien,M.J. *et al.* (2007) Mutation in mouse Hei10, an E3 ubiquitin ligase, disrupts meiotic crossing over. *PLoS Genet.*, **3**, 1550–1563.
62. Qiao,H., Prasada Rao,H.B.D., Yang,Y., Fong,J.H., Cloutier,J.M., Deacon,D.C., Nagel,K.E., Swartz,R.K., Strong,E., Holloway,J.K. *et al.* (2014) Antagonistic roles of ubiquitin ligase HEI10 and SUMO ligase RNF212 regulate meiotic recombination. *Nat. Genet.*, **46**, 194–199.
63. Ashley,T., Walpita,D. and De Rooij,D.G. (2001) Localization of two mammalian cyclin dependent kinases during mammalian meiosis. *J. Cell Sci.*, **114**, 685–693.
64. Zhang,F., Shi,J., Chen,S.H., Bian,C. and Yu,X. (2015) The PIN domain of EXO1 recognizes poly(ADP-ribose) in DNA damage response. *Nucleic Acids Res.*, **43**, 10782–10794.
65. Goellner,E.M., Putnam,C.D., Graham,W.J., Rahal,C.M., Li,B.Z. and Kolodner,R.D. (2018) Identification of Exo1-Msh2 interaction motifs in DNA mismatch repair and new Msh2-binding partners. *Nat. Struct. Mol. Biol.*, **25**, 650–659.
66. Tran,P.T., Fey,J.P., Erdeniz,N., Gellon,L., Boiteux,S. and Liskay,R.M. (2007) A mutation in EXO1 defines separable roles in DNA mismatch repair and post-replication repair. *DNA Repair (Amst)*, **6**, 1572–1583.
67. Peña-Díaz,J., Bregenhorn,S., Ghodgaonkar,M., Follonier,C., Artola-Borán,M., Castor,D., Lopes,M., Sartori,A. and Jiricny,J. (2012) Noncanonical mismatch repair as a source of genomic instability in human cells. *Mol. Cell*, **47**, 669–680.
68. Chahwan,R., Edelman,W., Scharff,M.D. and Roa,S. (2011) Mismatch-mediated error prone repair at the immunoglobulin genes. *Biomed. Pharmacother.*, **65**, 529–536.
69. Roa,S., Li,Z., Peled,J.U., Zhao,C., Edelman,W. and Scharff,M.D. (2010) MSH2/MSH6 complex promotes error-free repair of AID-Induced dU:G mispairs as well as error-prone hypermutation of A:T Sites. *PLoS One*, **5**, e11182.
70. Chen,X., Paudyal,S.C., Chin,R.I. and You,Z. (2013) PCNA promotes processive DNA end resection by Exo1. *Nucleic Acids Res.*, **41**, 9325–9338.
71. Nielsen,F.C., Jäger,A.C., Lützen,A., Bundgaard,J.R. and Rasmussen,L.J. (2003) Characterization of human exonuclease 1 in complex with mismatch repair proteins, subcellular localization and association with PCNA. *Oncogene*, **23**, 1457–1468.
72. Gray,S. and Cohen,P.E. (2016) Control of meiotic crossovers: from double-strand break formation to designation. *Annu. Rev. Genet.*, **50**, 175–210.
73. Hunter,N. (2015) Meiotic recombination: the essence of heredity. *Cold Spring Harb. Perspect. Biol.*, **7**, a016618
74. Yamada,S., Hinch,A.G., Kamido,H., Zhang,Y., Edelman,W. and Keeney,S. (2020) Molecular structures and mechanisms of DNA break processing in mouse meiosis. *Genes Dev.*, **34**, 806–818.
75. Cannavo,E., Sanchez,A., Anand,R., Ranjha,L., Hugener,J., Adam,C., Acharya,A., Weyland,N., Aran-Guiu,X., Charbonnier,J.B. *et al.* (2020) Regulation of the MLH1–MLH3 endonuclease in meiosis. *Nature*, **586**, 618–622.
76. Gioia,M., Payero,L., Pannafino,G., Chen,J.J., Salim,S., Fajith,G., Farnaz,A.F., Momoh,S., Scotland,M., Raghavan,V. *et al.* (2021) Exo1-protected DNA nicks direct crossover formation in meiosis. bioRxiv doi: <https://doi.org/10.1101/2021.08.29.458102>, 30 August 2021, preprint: not peer reviewed.