

Research

Open Access

Peripheral infusion of rat bone marrow derived endothelial progenitor cells leads to homing in acute lung injury

Christian M Kähler*¹, Jutta Wechselberger¹, Wolfgang Hilbe²,
Andreas Gschwendtner³, Daniela Colleselli¹, Harald Niederegger⁴, Eva-
Maria Boneberg⁵, Gilbert Spizzo⁶, Albrecht Wendel⁷, Eberhard Gunsilius⁶,
Josef R Patsch^{1,2} and Jürg Hamacher*^{7,8}

Address: ¹Department of Internal Medicine, Division of General Internal Medicine, Pneumology Centre, Innsbruck Medical University, Austria, ²Department of Internal Medicine, Division of General Internal Medicine, Oncology Service, Innsbruck Medical University, Austria, ³Department of Pathology, Innsbruck Medical University, Austria, ⁴Department of Experimental Pathology, Innsbruck Medical University, Austria, ⁵Biotechnology Institute Thurgau, University of Konstanz, Tägerwilen, Switzerland, ⁶Department of Internal Medicine, Division of Haematology and Oncology, Innsbruck Medical University, Austria, ⁷Biochemical Pharmacology, Faculty of Biology, University of Konstanz, Germany, ⁸Pulmonary Division, Department of Internal Medicine, University Hospital of Homburg, University of Saarland, D-66421 Homburg, Germany, and

Email: Christian M Kähler* - c.m.kaehler@i-med.ac.at; Jutta Wechselberger - jutta_tux@hotmail.com; Wolfgang Hilbe - wolfgang.hilbe@i-med.ac.at; Andreas Gschwendtner - Andreas.Gschwendtner@Klinikum-Coburg.de; Daniela Colleselli - daniela.colleselli@i-med.ac.at; Harald Niederegger - harald.niederegger@i-med.ac.at; Eva-Maria Boneberg - eva.maria.boneberg@bitg.ch; Gilbert Spizzo - gilbert.spizzo@i-med.ac.at; Albrecht Wendel - Albrecht.Wendel@uni-konstanz.de; Eberhard Gunsilius - eberhard.gunsilius@uki.at; Josef R Patsch - josef.patsch@uki.at; Jürg Hamacher* - hamacher@greenmail.ch

* Corresponding authors

Published: 9 July 2007

Received: 2 March 2007

Respiratory Research 2007, 8:50 doi:10.1186/1465-9921-8-50

Accepted: 9 July 2007

This article is available from: <http://respiratory-research.com/content/8/1/50>

© 2007 Kähler et al; licensee BioMed Central Ltd.

This is an Open Access article distributed under the terms of the Creative Commons Attribution License (<http://creativecommons.org/licenses/by/2.0>), which permits unrestricted use, distribution, and reproduction in any medium, provided the original work is properly cited.

Abstract

Background: Bone marrow-derived progenitors for both epithelial and endothelial cells have been observed in the lung. Besides mature endothelial cells (EC) that compose the adult vasculature, endothelial progenitor cells (EPC) are supposed to be released from the bone marrow into the peripheral blood after stimulation by distinct inflammatory injuries. Homing of ex vivo generated bone marrow-derived EPC into the injured lung has not been investigated so far. We therefore tested the hypothesis whether homing of EPC in damaged lung tissue occurs after intravenous administration.

Methods: Ex vivo generated, characterized and cultivated rat bone marrow-derived EPC were investigated for proliferation and vasculogenic properties in vitro. EPC were tested for their homing in a left-sided rat lung transplant model mimicking a severe acute lung injury. EPC were transplanted into the host animal by peripheral administration into the femoral vein (10^6 cells). Rats were sacrificed 1, 4 or 9 days after lung transplantation and homing of EPC was evaluated by fluorescence microscopy. EPC were tested further for their involvement in vasculogenesis processes occurring in subcutaneously applied Matrigel in transplanted animals.

Results: We demonstrate the integration of intravenously injected EPC into the tissue of the transplanted left lung suffering from acute lung injury. EPC were localized in vessel walls as well as in destructed lung tissue. Virtually no cells were found in the right lung or in other organs. However, few EPC were found in subcutaneous Matrigel in transplanted rats.

Conclusion: Transplanted EPC may play an important role in reestablishing the endothelial integrity in vessels after severe injury or at inflammatory sites and might further contribute to vascular repair or wound healing processes in severely damaged tissue. Therapeutic applications of EPC transplantation may ensue.

Background

Aimed at a huge surface between blood and ambient air to accomplish the optimal external breathing, the lung is a high-throughput blood sponge that has matched its endothelial surface virtually to the same size as the alveolar space [1]. Endothelial cells (EC) regulate the transport of nutrients and mediators, the traffic of inflammatory cells, and regulate the vascular tone, density and selectivity of the blood-interstitial barrier [2]. In many pathophysiological processes, e.g. during haemostasis, inflammation and angiogenesis they thus are suggested to play a key role [3].

Due to the lung's serial position in the blood circulation the whole amount of cardiac output has to pass through the pulmonary capillary network, giving the lung an important role as a capillary filter. This capillary network has furthermore been organized as an intravascular storage pool for polymorphonuclear neutrophil granulocytes (PMN). This strategical position in a serially circulated organ like the lung may be an advantage to rapidly overcome infective agents, but may be dangerous in case of overwhelming inflammatory stimuli during pneumonia, trauma or sepsis, conditions that may cause acute lung injury (ALI). ALI and consecutively, the Acute Respiratory Distress Syndrome (ARDS) are characterized by a diffuse transmural alveolar wall damage leading to severe epithelial injury and cell death [4]. Pulmonary EC death and dysfunction of the vessel network seem to be characteristic for this severe lung damage which is still leading in a high proportion to patients death [5]. Besides vascular lesions in main pulmonary arteries [6], up to 50% of lung capillaries have been shown to be lost during ALI/ARDS [7]. The importance of EC cell death has been further supported by data observed in animal models inducing ALI after lipopolysaccharide injection [8,9]. Severe tissue injury in ALI/ARDS is suggested to result further in an acute inflammatory response followed by repair processes that may result in additional apoptosis/necrosis of EC or epithelial cells [3,8-10]. The replacement of these dead cells during this repair process was formerly uniquely believed to be derived from cells in the vicinity of the damage within a given tissue [11]. However, recently published data suggest that repair mechanisms may in part also rely on bone marrow-derived progenitor cells that are capable of differentiating in the directions that the injured site needs [3,12,13], and that there is a dose-relationship between the degree of lung injury and the amount of repair cells stemming from the bone marrow [14].

Indeed, bone marrow has become a recognized source for progenitor cells of several cell types [15], including EC [13,16,17], epithelial cells [13,18-23], mesenchymal stem cells [24,25], hepatocytes [26], cardiac [27], striated [28] and smooth muscle cells [29], fibroblasts or myofibro-

blasts [30,31] and neurons [32,33]. However, a number of observations have been made on rare engrafted cells, where circulating blood cells, dead cells, cell fusion, or artifacts like autofluorescence might lead to misinterpretation. Therefore, the reconstitution of lung epithelium by bone marrow cells has recently been questioned [34].

Nevertheless, therapeutic trials aiming for organ repair utilising cell progenitors are evolving [35-42]. Additionally, EPC can circulate in the peripheral blood and track to other organs [17,43].

In contrast to mature EC that compose the adult vasculature, EPC are supposed to be released from the bone marrow into the peripheral blood after stimulation by distinct inflammatory injuries [3,44]. EPC have been shown to display a higher proliferative potential [45] and may migrate to regions of the circulatory system with injured endothelia, including sites of traumatic, degenerative, or ischemic injury and thus promote repair or the formation of new vessels [13,45-52]. Whereas in blood the mature endothelial cells may originate from sloughing off the vessel wall following some form of vascular insult, higher numbers of circulating EPC seem consistently associated with a more normal vascular function or less endothelial dysfunction, and less cardiovascular risk factors [43], cardiovascular events and death [53]. Functional circulating EPC are thus interpreted as the repair cells of vascular beds [54]. A recent study suggests a superior survival of patients with acute lung injury and higher number of circulating EPC than their counterparts with lower numbers [55]. Also in pneumonia patients, circulating EPC increase. Imaging data further imply persistent fibrotic changes if circulating EPC numbers remained low during pneumonia, therefore suggest some role in the evolution or repair of such tissular injury [56]. In healthy adults, the concentration of EPC in peripheral blood is low (2-3 cells/ml) [57], but vastly depends on the determination technique [54]. EPC levels have been shown to be about threefold higher in human umbilical cord blood.

In this study we tested the hypothesis whether the homing of intravenously administered bone marrow-derived EPC occurred in damaged lung tissue after the setting of severe tissue injury, as previously shown in part in an abstract [58]. As these cells are suggested to be important for repairing tissue damage, are rather homogeneous compared to bone marrow [59], and we ought to investigate their presence in the lung, we chose a unilateral model of severe ALI. Due to a prolonged ischemia of 20 h, such severe lung injury occurred as ischemia-reperfusion injury in a model of left-sided rat lung allotransplantation. Such transplantation of EPC would primarily elucidate key pathogenic aspects of repair. It may also open prospects to modulate biological responses by such cells for gene

delivery, drug- or chemosensitization or apoptosis in tumor vasculature as Trojan horses [60].

Methods

Isolation and culture conditions of endothelial progenitor cells (EPC) from rat bone marrow

EPC were collected from the femurs of 6 to 8 weeks old male Sprague-Dawley rats (220–280 g). Aspirated bone marrow was mixed with 1000 U/ml heparin (Immuno, Vienna, Austria), deoxyribonuclease I 1000 U/ml (Sigma, St. Louis, MO) in Dulbecco's PBS (PAA Laboratories, Austria) as described [61]. The mononuclear cell fraction was obtained from a Lymphoprep density gradient (Nycomed, Norway) after centrifugation for 30 min at 1700 rpm (centrifuge GPR, Beckman, Hettich, Germany). The mononuclear cell fraction was carded, washed and centrifuged at 800 rpm for 10 min. The cell pellet was then suspended in EBM-2 medium (Clonetics, San Diego, California) supplemented with 20% fetal calf serum (FCS, PAA Laboratories, Austria) and plated on rat-derived fibronectin-coated (10 µg/ml, Sigma, F0635, St. Louis, MO) 12-well plates (Costar, Corning, The Netherlands). After 24 h the non-adherent cell population was aspirated and transferred to a new fibronectin-coated plate. After another 24 h this procedure was repeated to remove rapidly adherent hematopoietic cells or mature EC being possibly present in the aspirate. Only the non-adherent cell population harvested after 48 h was evaluated further in all experiments. This fraction was cultured in EBM-2 medium containing vascular endothelial growth factor (VEGF), human fibroblast growth factor-B (hFGF-B), R³-insulin like growth factor (R³-IGF-1), human epidermal growth factor (hEGF), ascorbic acid, hydrocortisone, gentamycin, amphotericin B (MV-Kit, Clonetics, San Diego, California) and stem cell growth factor (SCGF, Prepro-Tech EC Ltd., USA). After 2–3 days a kind of angioblast-like cells were observed and spindle-shaped cell outgrowth documented. After 7 to 10 days confluence of the outgrowing cell population was reached and cells were divided by collagenase (Type CLS-CI-22, Biochrom AG, Berlin, Germany).

Characterization of EPC from rat bone marrow

Cells were primarily characterized by phase contrast microscopy evaluating cobblestone morphology which is typical for confluent EC. EPC were further imaged for their incorporation of acetylated low density lipoprotein (aLDL) labeled with fluorescent Dil dye (Dil-acLDL; Biomedical Technologies, Stoughton, Massachusetts). Indirect immunofluorescence for detection of CD31 (PharMingen, USA), was performed using rabbit anti-rat PECAM-1 antibody by a standard protocol as given by the manufacturer. Secondary FITC-labeled antibodies (swine anti-rabbit Ig) were purchased from DAKO (Carpenteria, California). Von Willebrand Factor (vWF) was detected by

direct immunofluorescence using a FITC-marked anti-vWF antibody (DAKO, Carpenteria, California). Direct and indirect immunofluorescence microscopy was done using a Olympus BH-2 RFCA fluorescence microscope and KAPPAImage software (Kappa Optoelectronics, Germany).

Additionally, flow cytometry (FACS) analyses were performed for further characterization of EPC. EPC were checked for the presence of CD146-PE (P1H12) (Chemicon, Temecula, USA), CD133-PE (Milteny-Biotec, Bergisch-Gladbach, Germany), VEGF receptor-2 (KDR; R&D, Wiesbaden, Germany) and CD106 (clone 1.G11B1, Serotec, Oxford, UK). Expression of cell surface markers were measured in a LSR flow cytometer (Becton Dickinson, USA) using the Cell Quest software (Becton Dickinson, USA).

Isolation and culture conditions of arterial endothelial cells from rat thoracic aorta (rAEC)

Female Sprague-Dawley rats weighing 230–280 g were housed in a light-, temperature-, and humidity-controlled environment and provided with food and water ad libitum. Before killing by decapitation, rats were anesthetized with diethylether and thoracic aortas prepared immediately after removal. Aortas were cut into consecutive 2 mm segmental rings, mounted on the plastic surface of 24-well tissue culture plates coated with a distinct mixture of collagen type I (0.1 mg/ml; Collaborative Biomedical Products, Bedford, MA), fibronectin (10 µg/ml; Collaborative Biomedical Products) and porcine gelatin (0.2%; Sigma, St. Louis, MO). Cells were cultured in M199 with 10% FCS, 100 U/ml penicillin, 100 mg/ml streptomycin and 100 mg/ml endothelial cell growth factor supplement (Sigma, St. Louis, MO) and kept in a humidified incubator at 37 °C in 5% CO₂. Rat aortic endothelial cells (rAEC) were used between passages three and five for all experiments.

Isolation and culture conditions of arterial endothelial cells from rat pulmonary arteries (rPAEC)

As given above two female Sprague-Dawley rats weighing 230–280 g were killed by decapitation: rats were anesthetized with diethylether and main pulmonary arteries prepared immediately after removal. Pulmonary arteries were cut into consecutive 2 mm segmental rings, mounted on the plastic surface of 24-well tissue culture plates coated with rat 10 µg/ml fibronectin. Rat pulmonary artery endothelial cells (rPAEC) were cultured in endothelial culture medium (Promo Cell, Heidelberg, Germany) containing 10% FCS and 2% endothelial cell growth supplement (Promo Cell, Heidelberg, Germany), 1% penicillin/streptomycin solution (Sigma, St. Louis, MO) and kept in a humidified incubator at 37 °C in 5% CO₂. rPAEC were used between passages three and five for all experiments.

Culture conditions of human lung microvascular endothelial cells (hL-MVEC)

Primary human lung microvascular endothelial cells (hL-MVEC; Clonetics, San Diego, CA, USA) were cultured according to the manufacturer's protocol in EBM-2 medium containing vascular endothelial growth factor (VEGF), human fibroblast growth factor-B (hFGF-B), R³-insulin like growth factor (R³-IGF-1), human epidermal growth factor (hEGF), ascorbic acid, hydrocortisone, gentamycin, amphotericin B (MV-Kit, Clonetics, San Diego, California).

Proliferation experiments

After incubation at 37°C for various time periods cellular proliferation was measured using a colorimetric assay for cell growth and chemosensitivity. This colorimetric assay based on the tetrazolium salt MTT ((3-(4,5-dimethylthiazol-2-yl)-2,5-diphenyl tetrazolium bromide; Sigma, St. Louis, MO) detects living but not dead cells, and the signal generated is directly proportional to the number of cells [62]. After 6 h of incubation, medium was aspirated from adherent cells without disturbing formazan crystals formed within the cells. Subsequently, dimethylsulfoxide (Merck, Darmstadt, Germany) was added to each well, the plates were agitated on a plate shaker, and the optical density was read with an enzyme-linked immunoabsorbent assay reader at 570 nm (MR 700; Dynatech Labs, Guernsey, United Kingdom).

In vitro capillary tube formation assay in Matrigel

For analysis of capillary tube formation, 150 µl Matrigel (Becton Dickinson, Heidelberg, Germany), an extracellular mouse sarcoma matrix (Engelbreth-Holm-Swarm tumor) known to be *in vivo* and *in vitro* a pro-angiogenic stimulus, was laid into the wells of a 48-well plate (Falcon, Heidelberg, Germany) and incubated at 37°C for 60 minutes. EPC or hL-MVEC were harvested and 3×10^4 cells resuspended in 200 µl EBM-2/MV medium and plated. Conditions with EBM-2/MV with 10% FCS or supplemented with 50 ng/ml VEGF were studied. Capillary tube formation on Matrigel was observed under an inverted Zeiss Axiovert microscope after 5 or 18 h of incubation.

Application of subcutaneous Matrigel

200 µl of Matrigel (Becton Dickinson, Heidelberg, Germany) was subcutaneously administered into the left-sided flank subcutis of lung transplant recipients with EPC injection eight days before transplantation in order to assess angiogenesis as shown in figure five.

Ex vivo cell tracer labeling of EPC

EPC were kept on fibronectin-coated culture flasks within EBM-2/MV medium as given above without further complementation prior to *in vivo* coloration. After a washing

procedure in buffer solution EPC were stained with the anionic sulfophenyl cell tracer SP-DiIC₁₈(3) (Molecular Probes, Leyden, The Netherlands), a formaldehyde and acetone resistant Dil dye at a concentration of 2 µg/ml solution in standard PBS. Staining was performed on adherent EPC at 37°C for 10 min followed by a further incubation period of 35 min at 4°C. After staining, cells were washed in EBM-2 supplemented with 10% FCS. Efficacy of coloration and cell morphology was checked by fluorescence microscopy twice before transplantation. Furthermore, growth, morphology and fluorescence intensity of SP-DiIC₁₈(3)-*in vivo* staining was checked at the end of each experiment. No differences in biological functions of SP-DiIC₁₈(3)-stained EPC tested have been observed (data not shown). SP-DiIC₁₈(3) staining was detectable up to 14 days in *in vitro* cultured EPC (data not shown).

Flow cytometry (FACS) of EPC in rat blood samples

100 µl of EDTA blood was withdrawn from an EPC-injected lung transplant recipient 12 h post reperfusion from the jugular vein. Whole blood was stained with 10 µl anti rat CD42d-FITC (Becton Dickinson, Heidelberg, Germany), 10 µl anti rat CD45-FITC (Becton Dickinson), and 10 µl anti human CD146-PE (clone P1H12, Chemicon, Hofheim, Germany) for 30 min at room temperature. Red blood cells were lysed with 1 ml of BD Lysing Solution (Becton Dickinson) for 10 min at room temperature. After washing twice with 3 ml PBS, cells were measured in a BD LSR flow cytometer (Becton Dickinson) using Cell Quest software (Becton Dickinson). To quantify the amount of circulating EC in the blood samples a standardized amount of 6 µm latex microspheres (Polysciences, Eppelheim, Germany) was added to each blood sample. With this internal standard it was possible to calculate the amount of circulating EC per ml of blood.

In vivo experimental protocol including the intravenous injection of EPC

All experiments were performed according to the Helsinki convention for the use and care of animals and were approved by the local review boards for animal care. Briefly, weight matched female Sprague-Dawley rats of 220 – 270 g received orthotopic single left lung allografts under general anesthesia with 2% halothane from female Sprague-Dawley rats after a total graft ischemia of 20 h. A standard cuff technique for the vessel anastomoses and a running suture for the bronchial anastomosis were applied, as well as for the donor procedure and transplantation [63]. Immediately before injection of EPC into the host rat, SP-DiIC₁₈(3)-labelled cells were harvested, washed and resuspended in EBM-2 medium at a concentration of 1×10^6 /ml. Injection of EPC was done under general anesthesia with 2% halothane into the saphenous vein of the right hind leg under microscopic vision to

ascertain the successful and complete venous administration into each host animal. Intravenous application of EPC was performed 50 to 120 min after reperfusion of the transplanted left lung (n = 9). Two further control animals were not lung transplanted but received labelled EPC as given above.

In vivo experimental protocol

Host animals

Weight matched female Sprague-Dawley rats of 220 – 270 g received orthotopic single left lung allografts from female Sprague-Dawley rats after a total graft ischemia of 20 h. A cuff technique for the vessel anastomoses and a running suture for the bronchial anastomosis were applied. The experiments were performed according to the Helsinki convention for the use and care of animals and were approved by the local review boards for animal care.

Donor procedure

Animals were anaesthetized by intraperitoneally administered pentobarbital (50 mg/kg) and heparinized (500 I.U./kg). After tracheotomy the animals were ventilated through a 14 gauge cannula (FiO₂ = 1.0) by a Unno rodent ventilator (Hugo Sachs Harvard Apparatus, March-Hugstetten, Germany) at a tidal volume of 8 ml/kg at 100/min. After division of the inferior vena cava and resection of the left appendix of the heart, a small silicon tube was inserted into the main pulmonary artery. Both lungs were flushed with 20 ml of Low Potassium Dextrane (LPD) solution (Perfadex, kindly provided from Xvivo, Göteborg, Sweden) at a pressure of 20 cm H₂O. The trachea was tied in end-inspiration, the heart-lung block removed and 16 gauge cuffs (Abbocath-T, Abbott, Sligo, Ireland) were placed around the pulmonary artery and vein. The vessels were inverted and tied onto the cuff with an 8-0 monomeric filament. The lung was stored in LPD solution at 1.5°C until implantation.

Recipient procedure

Transplantation was performed after 20 h of cold ischemia at 1.5°C. The recipient rat was anesthetized by breathing 4% halothane in a glass chamber followed by intubation. Anesthesia was maintained throughout the operative procedure with 2% halothane. A left lateral thoracotomy was performed in the 4th intercostal space. The left hilum was dissected and after clamping of the left pulmonary artery and vein with removable microvascular clips, the pulmonary vein was opened, flushed with heparinized saline solution, and the cuff was inserted and fixed with 6-0 Silk. With the same technique, the pulmonary artery was anastomosed. The native left lung was removed and the bronchial anastomosis performed with a running over-and-over suture with 9-0 Monosof (Tyco Healthcare, Wollerau, Switzerland). The lung was first

reventilated and then reperfused. A chest tube was inserted and the thoracotomy closed. The chest tube was removed after restoration of spontaneous breathing when the animal was extubated.

Intravenous injection of EPC

Immediately before injection of EPC into the host rat, SP-DiIC₁₈(3)-labelled cells were harvested, washed and resuspended in EBM-2 medium at a concentration of 1 × 10⁶/ml. Injection of EPC (1 × 10⁶ cells) was done under general anesthesia with 2% halothane into the saphenous vein of the right hind leg under microscopic vision to ascertain the successful and complete venous administration into each host animal. In preliminary experiments tolerability of intravenous application of EBM-2 (1 ml) alone turned out to be safe. Intravenous application of EPC was performed 50 to 120 min after reperfusion of the transplanted left lung.

Assessment of transplanted EPC in the host animal

To evaluate the incorporation of EPC into rat organs, animals were anesthetized by intraperitoneal pentobarbital (50 mg/kg) and ventilated after tracheotomy with an FiO₂ of 1.0 at 100/min, a tidal volume of 8 ml/kg, and a positive end-expiratory pressure (PEEP) of 5 cm H₂O. Lung transplanted animals were sacrificed after one day (n = 7), 3 days (n = 1), or 9 days (n = 1) post transplantation. Controls were killed at day one after peripheral EPC injection. Animals were sacrificed after median thoracotomy and intracardiac heparinization with 500 U/kg, when lungs were flushed with 20 ml saline solution through the pulmonary artery. The heart-lung block was excised and the lungs separated: Each lung was divided and one part put into 10% PBS-buffered formalin solution, and the remainder part was deep-frozen in liquid nitrogen and stored at -70°C.

Further organs of the host rats (spleen, liver, kidney and adrenals, stomach, small intestine, colon, bone) were preserved in 10% PBS-buffered formalin solution as well as deep-frozen in liquid nitrogen and stored at -70°C.

Immunofluorescence staining of tissue specimens

The formalin-fixed tissue was paraffin-embedded and cut at 4 μm to 10 μm (as given in detail in some experiments). Slides were heated in an incubator at 70°C for 30 min before they were deparaffinized in xylene and hydrated in graded ethanol. Slides were incubated with FITC-labelled lectin from *Bandeiraea simplicifolia* (*Griffonia simplicifolia*) BS-I (Sigma, St. Louis, MO) and 3', 6'-diamidino-2-phenylindole, dihydrochloride (DAPI; Molecular Probes, Leyden, The Netherlands) according to the manufacturers' protocol. *Bandeiraea simplicifolia* lectin was chosen due to its affinity to EC, and DAPI staining was used to stain nuclei specifically with blue fluorescence. Lectin was

diluted at 1:100 and DAPI at 1:1000 in PBS containing 1% bovine serum albumin (BSA). Analysis was performed by three of the authors (H. N., J.H., C.M.K.) using a Zeiss Axioskop 2 light and fluorescence microscope (Zeiss, Göttingen, Germany). For additional confocal microscopic analysis, histological sections with a thickness up to 10 μm (left-sided injured lung, right lung and the other organs investigated) were examined with an Inverse Axiovert 100 M BP (Base Port) confocal microscope LSM 510 (Zeiss, Göttingen, Germany) using the following laser emissions: DAPI: excitation 364 nm, emission BP 385–470 nm; FITC: excitation 488 nm, emission BP 405–430 nm; SP-DiIC₁₈(3): excitation 543 nm: emission LP 585 nm. Fluorescent signals from DAPI, FITC-lectin and SP-DiIC₁₈(3) were viewed simultaneously in separate detector channels. True color overlays of single and serial sections were generated with Zeiss confocal software 2.8 SP1.

Statistical analyses

Values are presented as mean \pm S.E.M. The values were compared by Mann-Whitney U test as given in the text. Differences were considered statistically significant at $p \leq 0.05$.

Results

Characteristics of ex vivo-generated bone marrow-derived rat EPC

Cells were harvested from the non-adherent fraction of rat bone marrow mononuclear cells after 48 h of culture on fibronectin-coated culture dishes (Figure 1A). EPC appeared to grow out of a so-called angioblast as had been already described for human EPC [64] (Figure 1C, D). The outgrowth cells first exhibited a spindle cell shape (Figure 1B), and after 7 to 10 days in culture a more endothelial cell-like cobblestone morphology was observed (Figure 1D).

Utilizing phase contrast microscopy as well bone marrow-derived EPC (Figure 2A) as rAEC (Figure 2B) showed typical endothelial cobblestone morphology after reaching confluence. The endothelial phenotype was further confirmed by immunostaining with antibodies specific for several endothelial markers and compared with mature rAEC. EPC incorporated Dil-acLDL (Figure 2C) as observed in mature rAEC (Figure 2D). Furthermore, EPC (Figure 2E) as well as rAEC (Figure 2F) uniformly expressed vWF in their cytoplasmic granules. EPC further showed positive staining for CD34, CD31 and VEGF receptor-2 (KDR; Flk-1) in immunofluorescence experiments (data not shown).

Additionally, expression of endothelial surface markers (Figure 2G) on EPC and hL-MVEC were compared by flow cytometry. EC showed a bright staining with CD146-PE (P1H12) and are not stained with the platelet marker

CD42d-FITC and the leukocyte marker CD45-FITC. Those antibody combinations ensure that no leukocytes or platelet aggregates with non-specific CD146-PE staining are gated as EC. As depicted, EPC and hL-MVEC express the markers CD146 (P1H12), CD133, KDR and CD106. However, EPC showed higher expression of the stem cell marker CD133 as well as CD146 (P1H12) than mature microvascular endothelial cells.

Appearance of these tested markers was comparable further with staining intensity of mature rAEC. Thus, the expression of diverse EC markers detected confirmed the endothelial identity of the outgrowth cells of the non-adherent cell fraction cultured from rat bone marrow. The endothelial phenotype remained constant for more than 20 passages, demonstrating the stability of freshly isolated EPC from rat bone marrow.

Proliferative kinetics of rat bone marrow-derived EPC in vitro

As depicted in Figure 3A, EPC show a dramatic increase in their proliferative kinetics when compared with mature rPAEC after stimulation with 20% FCS. The increase in cell number was about threefold when compared with mature rPAEC. These observations are in good agreement with published data by Bompais et al. [45]. Also increasing concentrations of basic fibroblast growth factor (bFGF) resulted in a significant increase of EPC cell number with a maximal effect observed between 10 $\mu\text{g}/\text{ml}$ and 100 $\mu\text{g}/\text{ml}$ after 72 h (maximal concentration tested; Figure 3B).

Vasculogenic properties of rat bone marrow-derived EPC

Consistent with the observed endothelial phenotype (phase contrast microscopy, detection of endothelial markers by flow cytometry), EPC formed capillary-like formations within 6–12 hours when plated on Matrigel after stimulation with VEGF (50 ng/ml; Figure 4B) when compared with the angiogenic potential of hL-MVEC (Figure 4A). Even spontaneous formations of capillary-like structures were observed by EPC when seeded at low cell numbers on fibronectin-coated (10 $\mu\text{g}/\text{ml}$) cell culture plates (Figure 4C). However, after cell number of EPC increased they showed a more cobblestone morphology (Figure 1, 2). These observations suggest a high capacity of EPC to form new vessels.

Flow cytometry analyses of circulating EC after peripheral EPC transplantation

Flow cytometry analyses with species cross-reactive monoclonal antibodies showed baseline levels of 302 (SD 222) circulating EC/ml peripheral blood in untreated animals. 12 h after reperfusion the amount of circulating EC (presumably mainly including transplanted EPC) increased to 22.300 (SD 14.190) circulating EC/ml

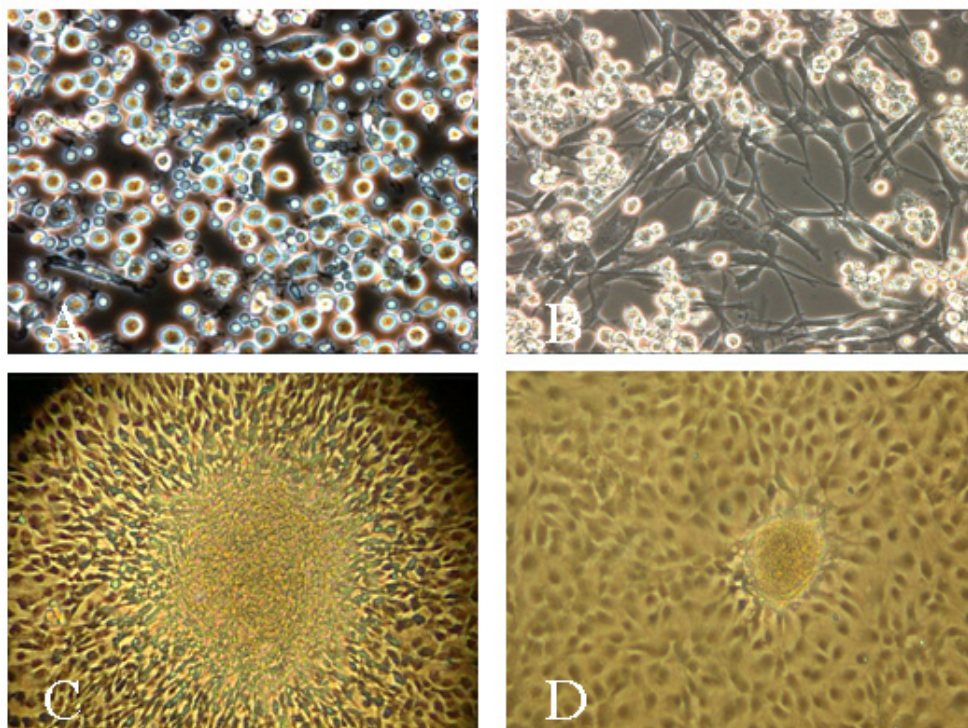


Figure 1

Rat bone marrow-derived EPC in culture. A highly purified population of EPC was isolated from hindlimb bone marrow of male Sprague-Dawley rats and maintained in EB2 medium containing several growth factors (A). Typical morphology (spindle cell shape) for rat EPC (B) occurred after a few days in culture (phase contrast microscopy 30 \times). Outgrowth of EPC appeared to occur from an angioblast-like cell as already documented for human EPC (C, 30 \times). Maintaining of the endothelial colonies in specific growth medium resulted in the proliferation of characteristic endothelial cobblestone colonies (D, 20 \times).

peripheral blood. An example of the flow cytometric measurement and the gating is depicted in Figure 5. This preliminary finding suggests that a rather high number of circulating EC can be detected in the circulation already few hours after initiation of ALI. However, as a limitation of these observations, transplanted EPC could not be determined directly by this method since the erythrocyte lysis buffer, which must be used for the flow cytometric analysis of blood samples, removed the fluorescence of the tracer dye SP-DiIC₁₈.

Incorporation of rat bone marrow-derived EPC into the injured left-sided transplanted lung and in subcutaneously administered Matrigel

SP-DiIC₁₈(3)-labeled EPC were administered intravenously 50 to 120 min after reperfusion of the transplanted left sided lung after a cold ischemia for 20 h. This unilateral orthotopic lung transplant model leads to a severe

ischemia-reperfusion injury resulting in an ALI in the transplanted lung leading to a P_aO₂/F_iO₂ of about 50 – 70 mm Hg [63]. Already one day after transplantation, SP-DiIC₁₈(3) – labeled EPC were detectable in the injured lung tissue. Specific immunofluorescence for SP-DiIC₁₈(3), was found throughout the left lung in all left lung transplanted animals (n = 9) while in the right lung or other organs of the same rats transplanted EPC were virtually not found. In all lung sections investigated we were able to detect injected EPC at a number of about 10 to 15 cells per slide. As a rat lung is about 30.000 μ m long we can suggest that about 30.000 (3%) up to 112.500 (11%) of EPC transplanted may home in the injured left lung (Figure 6). However, as a limitation of the method used (in vivo cell labeling) staining of partner cells upon cell fusion can not be excluded completely. *Ex vivo* generated EPC seemed to be incorporated into pulmonary capillaries as suggested by double-staining with lectin BS-I

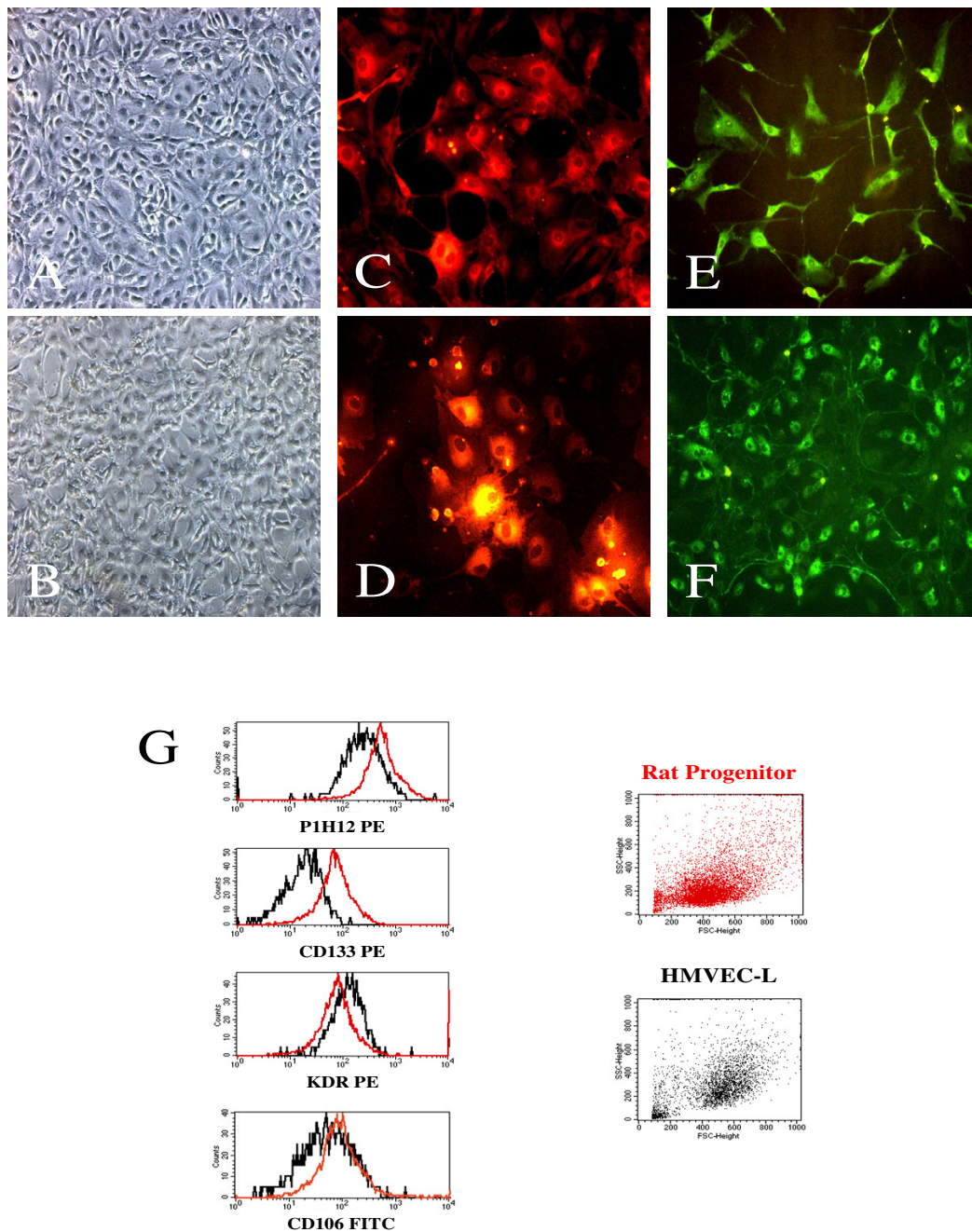
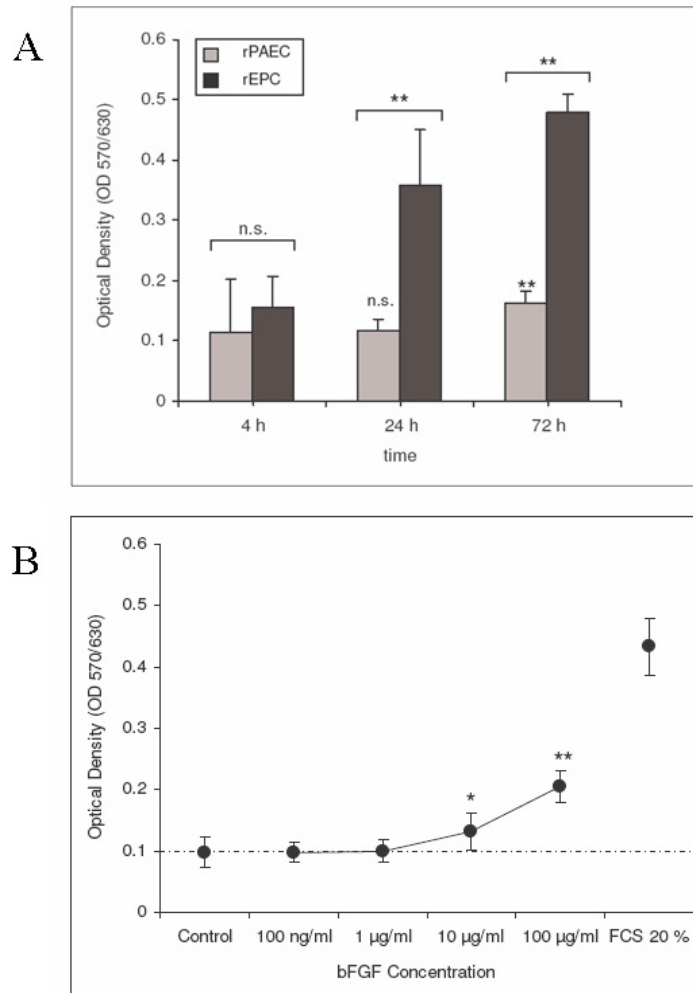


Figure 2

Characteristics of rat bone marrow-derived EPC. Utilizing phase contrast microscopy as well EPC (Figure 2A, 20 \times) as rAEC (Figure 2B, 20 \times) showed a typical cobblestone morphology after reaching confluence. The endothelial phenotype was further confirmed by immunostaining with antibodies specific for several endothelial markers and compared with mature rAEC: EPC cultured from rat bone-marrow incorporated acetylated low-density lipoprotein (aLDL, Figure 2c, 30 \times) to the same extent than observed in mature rAEC (Figure 2d, 30 \times). Furthermore, as well EPC (Figure 2E, 30 \times) as rAEC (Figure 2F, 20 \times) uniformly expressed von Willebrand factor (vWF). Figure 2G and 2H show the flow cytometric (FACS) characteristics of EPC (red lines) compared to hL-MVEC (black lines). Staining was performed for PIH12 corresponding to CD146, CD133, the VEGF-receptor 2 (KDR) and CD106 (VCAM-1) as given in Materials and Methods.

**Figure 3**

Proliferative characteristics of bone marrow-derived EPC. EPC and rPAEC were cultured in the presence of 20% FCS in EBM-2 without further supplements (Figure 3A) or in EBM-2 containing bFGF (Figure 3B). Figure 3A shows the differential growth capacities of EPC and mature rPAEC in the presence of EBM-2 supplemented with 20% FCS. Figure 3B shows the proliferative kinetics of EPC cultured in EBM-2 supplemented with 0.5% FCS towards increasing concentrations of bFGF (100 ng/ml to 100 µg/ml). Cells were seeded in 96-well plates, grown for 24 h in culture medium, washed twice with HEPES/EDTA and treated with bFGF in EBM-2 medium containing 0.5% FCS for 48 h as indicated. Cells were incubated with MTT solution, lysed and the absorbance was read. MTT activity is expressed as Optical Density and represents mean \pm SEM of five independent experiments, ** $p < 0.01$, * $p < 0.05$.

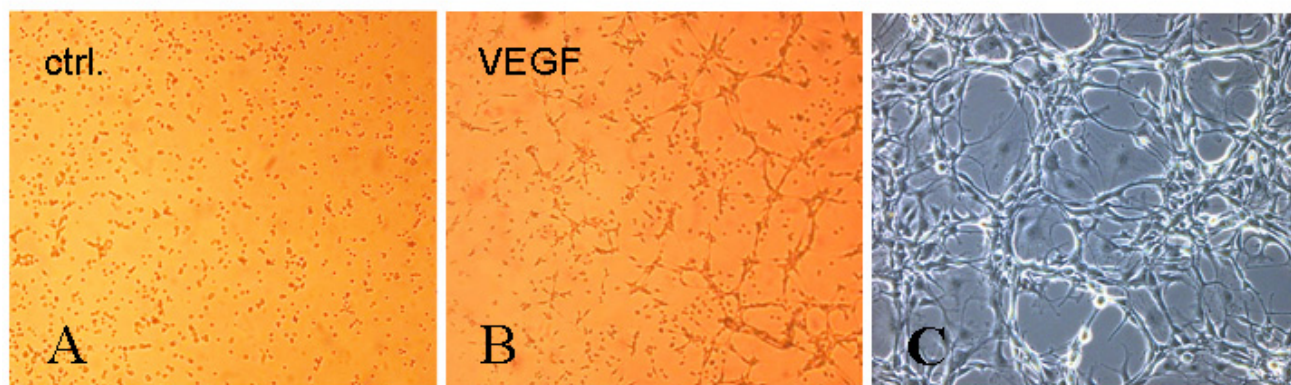


Figure 4

Capillary-like structures formed by rat bone marrow-derived EPC. Formation of tubular structures on Matrigel by EPC as a form of organisation characteristic of EC. EPC stimulated with VEGF (50 ng/ml) exhibited more tubular formation and with a particular tendency to multiple links between cell nest (Figure 4B) than observed with the control: hL-MVEC (Figure 4A) However, EPC have the capability to form capillary like structures when seeded at low cell numbers even in the absence of high concentrations of cytokines which suggests their high angiogenic potential. Picture represents a 20× magnification phase contrast microscopic picture (Figure 4C).

and nuclear staining with DAPI (Figure 7). Still 9 days after injection of SP-DiIC₁₈(3)-labeled cells, EPC were detectable in the transplanted left lung and seemingly integrated in capillary-like structures therein but not in the non-transplanted right lung. EPC were attributed to alveolar septal capillaries while we observed only few immunofluorescent signals in larger pulmonary vessels. Furthermore, SP-DiIC₁₈(3)-labeled EPC were also detected within widened septa of thickened alveoli. These cells could not be directly attributed to patent vessels. Interestingly, no EPC were found in alveolar spaces or in vessel lumina ever. DAPI staining confirmed functional integrity of injected EPC (Figure 7). In control animals (n = 2) virtually no peripheral administered EPC could be found in lung tissue. However, only about 0.5% of DAPI positive cells were co-labeled SP-DiIC₁₈. These observations are in good agreement with recently published data concerning peripheral injection of GFP-expressing EPC in immunodeficient (F344/N rnu/rnu) nude rats [65].

EPC were not detectable in the investigated specimens of other tissues such as myocardium, kidney and liver by fluorescence microscopy so far. However, EPC have been found in subcutaneously administered Matrigel which had been administered 8 days before lung transplantation in six animals. Figure 5 confirms both, that vessels have sprouted into the matrix and that about 24 h after left sided lung transplantation and about 23 h after EPC administration some of the peripherally injected EPC

have invaded the Matrigel as evidenced by confocal microscopy (Figure 8).

Discussion

The main finding of this study of one-sided severe ALI by ischemia and reperfusion is that incorporation of EPC could be demonstrated in the injured lung vascular bed and within the damaged tissue after peripheral administration. EPC were detected at a percentage between 3 to 11% in the left lung in our model. Homing of *ex vivo* generated EPC was selectively found in the injured transplanted left-sided, but not in the right lung (not transplanted). Also other organs like liver, spleen, kidney, stomach or intestines showed no detectable homing, whereas subcutaneously administered Matrigel gave evidence of few cells having migrated in. However, the number of EPC detected in the injured left lung and in the administered Matrigel might be underestimated as after cell division the fluorescent cell marker has been shown to lose its intensity. These findings, together with that of high amounts of circulating EC found after injection of EPC in venous blood, also corroborated that EPC found in the transplanted lung are not explained by simple embolism and suggests that a tropism of such cells to vasculogenic or wound healing areas might occur.

Homing of EPC in injured lung tissue gives evidence of a potential repair mechanism not yet observed in ALI. Indeed, not only the capillary leak that underlines the altered EC filter function of pulmonary microvessels, but

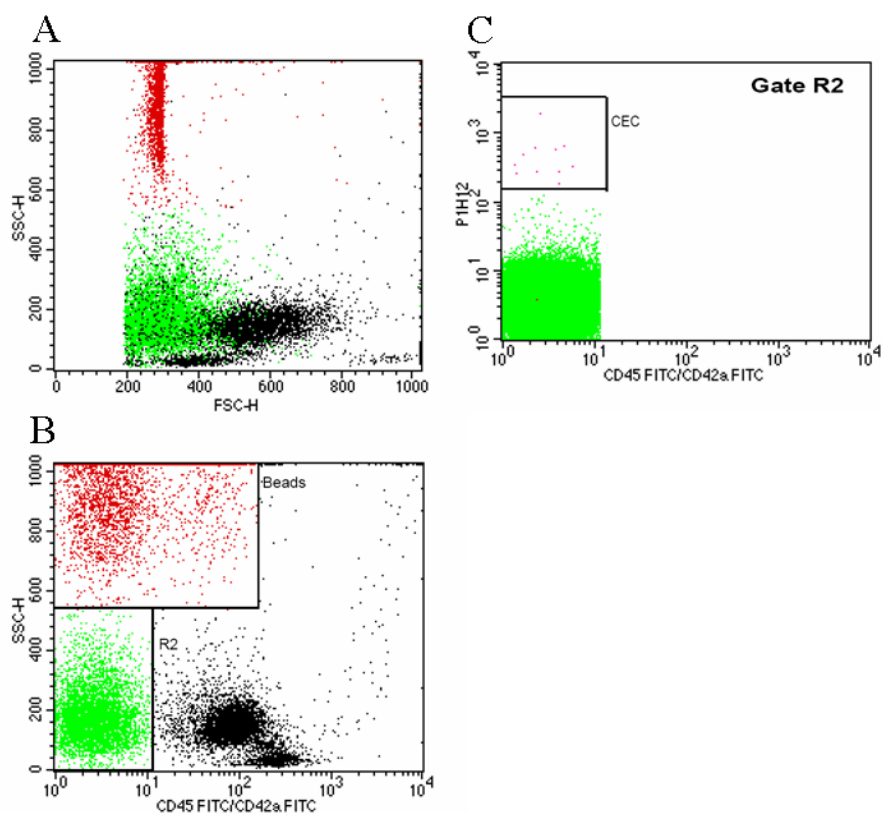


Figure 5

Flow cytometry analysis of circulating EC after transplantation. Flow Cytometry Analysis of Circulating EC after Transplantation. Example of a flow cytometric analysis of circulating EC in peripheral blood. The depicted data show a blood sample from an EPC-injected lung transplant recipient 12 h post reperfusion. Whole blood was stained with CD42d-FITC to exclude platelet aggregates and with CD45-FITC to exclude leukocytes, as well as CD146-PE (PIH12) as second fluorescence. Circulating EC are defined as CD146 positive and negative for CD45 and CD42d. The localization of that cell group in forward and side scatter is shown in Panel A as the green cell group. Panel A and B contain furthermore as a red group a standard dose of control beads in order to quantify cells. Panel A shows the forward and side scatter characteristics of the blood sample. In panel B the latex beads which are used as internal quantification standard (gate Beads) and the CD45 and CD42a negative population (gate R2) are gated. In panel C the CD45 and CD42a negative population of R2 is analyzed for their expression of the endothelial cell marker PIH12. Cells were counted as circulating endothelial cells when they were included in the depicted gate CEC.

also cell death has been described to be a clear feature of such transmural lung injury [5,7]. A high number of capillaries may be destroyed, and EC may undergo apoptosis or necrosis. It is therefore conceivable that EPC home at these pulmonary vascular sites where the adult EC phenotype is demised. This hypothesis is supported further by a recent study of Nagaya *et al.* [65]. They showed in a rat model that homing of EPC in pulmonary hypertension occurs and ameliorates monocrotaline-induced pulmonary hypertension, similar to recent work of Zaho *et al.* [66], suggesting that apoptotic mature EC are replaced by novel functional cells. Further work from Davie *et al.* gave evidence of a participation of EPC in adventitial vasa vaso-

rum in a hypoxia model [67]. A number of similar approaches have been described. Mouse studies on hind-limb ischemia have shown an enhanced tissue neovascularization with increased blood flow and capillary density [68] and a significantly lower number of lost limbs due to the transplantation of human EPC in athymic nude mice [69]. A pilot study and randomized controlled trial in limb ischemia patients treated with autologous transplanted bone-marrow cells in ischemic limb muscles showed a sustained significant effect of such therapeutic angiogenesis [35].

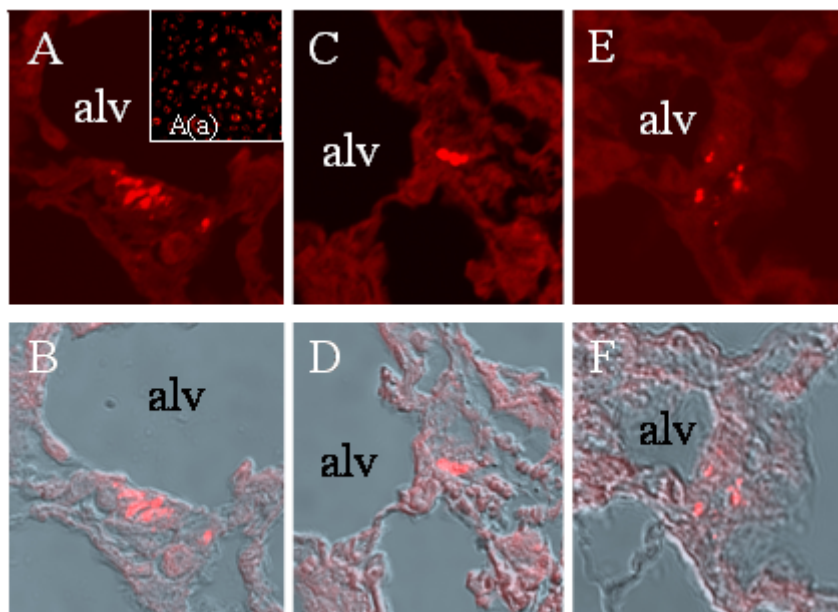


Figure 6

Localisation of EPC in the left-side transplanted lung. Lung specimens from rats after left-sided lung transplantation. EPC were stained prior to transplantation with SP-DiIC₁₈(3) (red). Figure 6A shows SP-DiIC₁₈(3)-staining (red) of EPC prior to intravenous transplantation. A-C, C-D and D-F show the same specimens, respectively. In the upper line confocal fluorescence microscopy for SP-DiIC₁₈(3)-stained EPC (red) is showed (A-C). In the lower row fluorescence is overlaid with light microscopy (D-F) for the same specimens. Abbreviation used: alv stands for alveoli.

Thereby, it is noteworthy that cell demise seems a critical phenomenon in ALI. Apoptosis seems to be a major pathway to EC death in ALI, and by the use of a caspase inhibitor to block the execution of apoptosis, there is some indirect evidence that influencing such apoptosis may affect animal survival [9]. On the other hand, apoptosis may be under circumstances of infection protective for the animal survival [70]. In our utilized lung injury model such apoptosis has been demonstrated to occur [71]. Second, it gives first evidence that such a stem cell-based replacement of dying or dead cells in the lung may be accomplished as a therapeutic strategy by an intravenous cell transplantation approach in severe ALI [72].

Furthermore, a CD34-negative subpopulation of bone marrow cells has been shown to uniquely engraft and reconstitute a minute part of ischemic myocardium with cardiomyocytes and EC [73]. The very similar finding of EC engraftment contrasts with the quite dissimilar cell population they used. Whether the difference in used populations may be of less importance due to the plasticity of such stem cells or progenitor cells [74,75] that may be able to transdifferentiate or dedifferentiate and even

cross germ lines, or due to the difficulty to define such cell populations [76] remains open. Also cell fusion [77-79] might be a reason for such a trans- or dedifferentiation hypothesis and may further increase the difficulty to categorize such cells. Observed controversies might be part of the different origins of EPC used in these studies [80].

Recently, Voswinckel *et al.* investigated after reporter gene bone marrow grafting in a model of left-sided pneumonectomy the compensatory lung growth that leads to important alveolization in rodents [81]. They could not find bone marrow-derived EC or smooth muscle cells, pericytes or fibroblasts in their model of rather slow regeneration and alveolarization where no injured lung tissue is present. Their very thorough approach to use three different mouse strains may imply, contrary to our finding in an ALI model, that the proliferative capacity of endogenous cell compartments of the lung [11] would be sufficient for such regeneration in their model of rather slow regeneration.

On the other hand it has been suggested that circulating bone marrow-derived stem cells support tissue-specific

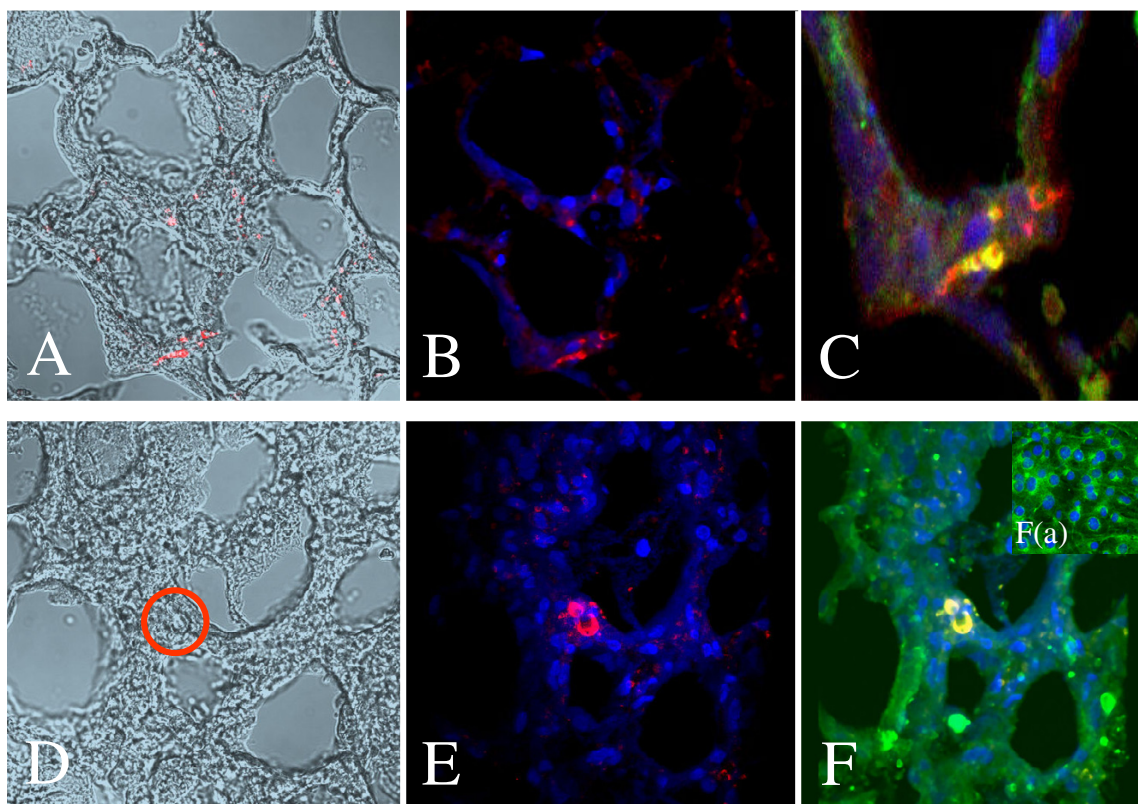


Figure 7

Localisation of EPC in the left-sided transplanted lung. All pictures show the same lung specimens from rats after left-sided lung transplantation and EPC injection. EPC were stained prior to transplantation with SP-DiIC₁₈(3) (red), followed by staining of histological specimens with the nuclear dye DAPI (blue) and the more endothelial specific FITC-labeled lectin from *Bandeiraea simplicifolia* (*Griffonia simplicifolia*) BS-I (green) showing the distribution of EPC. A-C: A-SP-DiIC₁₈(3) (red), B – SP-DiIC₁₈(3) (red) and DAPI (blue), C – merge: SP-DiIC₁₈(3) (red), DAPI (blue) and FITC-labeled lectin from *Bandeiraea simplicifolia* (*Griffonia simplicifolia*) BS-I (green) – Orange reveals staining for red and green) [Figure 7C represent magnification and a merge picture of a marked section of Figure 7A, B]; D-F: D: SP-DiIC₁₈(3) (red), E: SP-DiIC₁₈(3) (red) and DAPI (blue), F – merge: SP-DiIC₁₈(3) (red), DAPI (blue) and FITC-labeled lectin from *Bandeiraea simplicifolia* (*Griffonia simplicifolia*) BS-I (green) – Orange reveals staining for red and green). F(a): Staining of EPC in culture with DAPI (blue) and FITC-labeled lectin from *Bandeiraea simplicifolia* (*Griffonia simplicifolia*) BS-I (green) Abbreviation used: alv stands for alveoli.

cells during periods of severe acute injury in different tissues [82-84], or even repair more generally. A recent study by Yamada *et al.* corroborated the cell substitution hypothesis in the lung after pulmonary LPS exposure in mice. They observed a rapid mobilization in terms of an increase of bone marrow-derived progenitor cells in the circulation 4 h after exposure by about a factor of four, an accumulation of those cells within inflammatory sites and then their differentiation to endothelial or epithelial cells

[13]. If progenitors were suppressed by body irradiation, within one week the mice developed emphysema-like lesions, probably due to missing substitution of apoptotic or necrotic cells [10] and similar to an emphysema model of repeated LPS exposure [85]. In contrast, mice with LPS exposure and intact bone marrow did not have such structural changes one week later. These findings suggest that an inflammatory stimulus does not only induce the release of inflammatory cells from the bone marrow, but

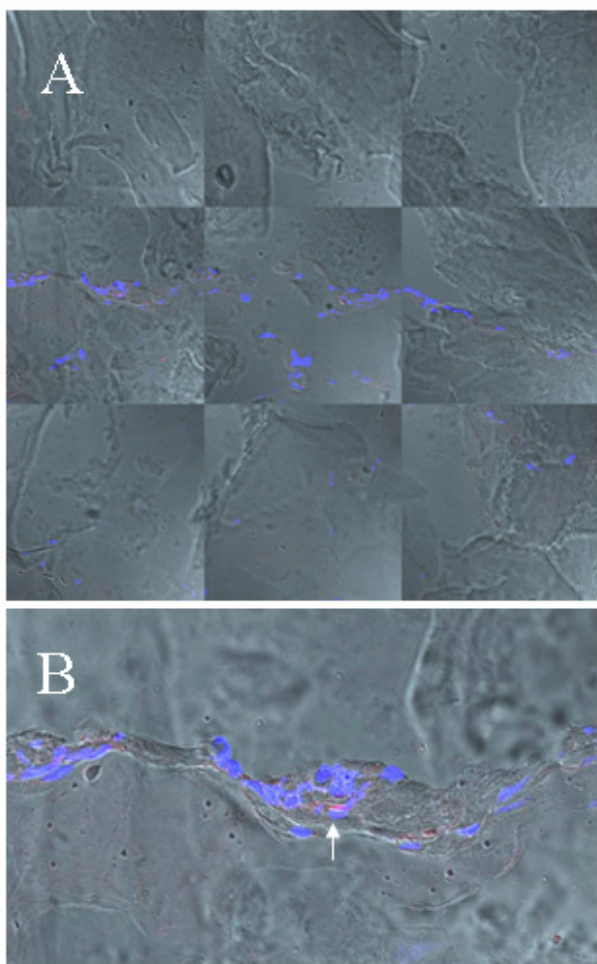


Figure 8
Localisation of EC and EPC in subcutaneous matrigel.
 Confocal fluorescence microscopic examination of a subcutaneously administered Matrigel, an extracellular mouse sarcoma matrix (Engelbreth-Holm-Swarm tumor) known to be *in vivo* a pro-angiogenic stimulus, that had been administered to the rats with EPC injection one week before transplantation subcutaneously. Matrigel showed invasion of cells building up capillary like structures. EPC are positive for SP-DilC₁₈(3) and DAPI. Figure A,B; blue: DAPI, red: SP-DilC₁₈(3)-labeled EPC).

also that of progenitor cells. Furthermore, these cells might be crucial to repair the lung in order to maintain the organ structure, as they integrate in the tissue and seem to differentiate or to fuse with other parenchymal cells to endothelial or epithelial cells. Whether these progenitors may have a more general therapeutic role in inflammatory diseases to repair lung parenchyma or even in diseases with important chronic lung destruction like emphysema remains open [13].

A number of studies addressed the role of such circulating progenitors: their mobilization [86,87], homing [88] and their association with inflammation [43,89], pneumonia [56], pulmonary hypertension [65-67], acute lung injury [55], or cancer [57,90,91]. Furthermore, we were able to detect CD133-positive EPC in tumor tissue of patients suffering from bronchial carcinoma [92], a concept that has been questioned experimentally [93]. Further studies are necessary to better understand their dynamics in such a repair process in health as well as in the addressed disease states.

As a limitation of our study protocol we can not give evidence of functional improvement by EPC homing. However, there are other reports from studies on therapeutic strategies that such transplantation of EPC may be favorable. Indeed, injured arteries or bio-prosthetic grafts have been shown to be early re-endothelialized with administered EPC, apparently resulting in less neointima deposition [46,94]. The progressive loss over time of transplanted cells in the grafts might be a result of rapid cell turnover and simultaneous replacement by recipient cells, be it from bone marrow or from nearby. Whereas similar findings were also made with another study using transfected cells [95], a definitive answer on the rapidity of cell replacement is still lacking due to technical limitations of such studies.

Conclusion

We could demonstrate the integration of intravenously injected *ex-vivo* expanded bone marrow-derived EPC in the injured vasculature uniquely of the transplanted lung with ALI. Those transplanted EPC may play a central role in reestablishing the endothelial integrity in injured vessels [13] and might further contribute in wound healing processes [21,55]. Our observations may have implications for novel cell-based therapeutic strategies [96], be it as endothelia per se to establish the vascular integrity, be it as vector for mediators as already shown with bone-marrow derived cells for the pulmonary epithelium [97] or as a "Trojan horse" aiming at tumor vessels for therapeutic interventions.

Competing interests

The author(s) declare that they have no competing interests.

Authors' contributions

C.M. Kaehler made substantial contribution to the conception, design, acquisition of data, analysis of data and interpretation thereof; J. Wechselberger performed characterisation and isolation of EPC; W. Hilbe was engaged in evaluation of immunohistochemistry and fluorescence microscopy; D. Colleselli did the proliferation experiments; H. Niederegger performed the confocal flo-

rescent microscopy; E. Boneberg did all FACS experiments; G. Spizzo was associated with the preparation of pathological specimens; A. Wensel, E. Gunsilius and J.R. Patsch have been involved in given final approval of the version to be published. J Hamacher performed all experimental animal procedures, the vasculogenesis experiments in vitro and made substantial contribution to the conception, design, acquisition of data, analysis of data and interpretation thereof. All authors read and approved the final manuscript.

Acknowledgements

The authors thank Mrs. Petra Freitag (University of Giessen) and Mrs. Frieda Oberwasserlechner (Innsbruck Medical University), Dr. Frank Schwöbel and Mrs. Maren Pflüger (University of Konstanz) for their assistance, and Mrs. Ina Kähler, Prof. M. Clauss (University of Indianapolis) and Prof. M. D. Menger (University of Saarland) for the critical reading of the manuscript.

The work of C.M. Kähler was supported by the "Verein für Tumorforschung – Pneumologie".

The work of J. Hamacher was supported by a grant from the "Deutsche Forschungsgemeinschaft" (FOR 321/2-1; research group "Endogenous tissue injury: Mechanisms of autodestruction") and by the Herrmann Josef Schieffer Prize of the "Freunde des Universitätsklinikums Homburg e.V.".

References

- Weibel ER, Taylor CR: **Design and structure of the human lung.** In *Pulmonary diseases and disorders Volume 2*. 2nd edition. Edited by: Fishman AP. New York, St. Louis, San Francisco, McGraw-Hill; 1988:11-60.
- Lin Y, Weisdorf DJ, Solovey A, Hebbel RP: **Origins of circulating endothelial cells and endothelial outgrowth from blood.** *J Clin Invest* 2000, **105**:71-77.
- Rafii S: **Circulating endothelial precursors: mystery, reality, and promise.** *J Clin Invest* 2000, **105**:17-19.
- Matute-Bello G, Liles WC, Steinberg KP, Kiener PA, Mongovin S, Chi EY, Jonas M, Martin TR: **Soluble Fas ligand induces epithelial cell apoptosis in humans with acute lung injury (ARDS).** *J Immunol* 1999, **163**:2217-2225.
- Bernard GR, Artigas A, Drighan DL, Carlet J, Falke K, Hudson L, Lamy N, Legall JR, Maurice A, Spragg R, committee : **The American-European consensus on ARDS: Definition, mechanisms, relevant outcome, and clinical trial coordination.** *Am J Respir Crit Care Med* 1994, **149**:818-824.
- Tomashefski JF Jr, Davies P, Boggis C, Greene R, Zapol WM, Reid LM: **The pulmonary vascular lesions of the adult respiratory distress syndrome.** *Am J Pathol* 1983, **112**:112-126.
- Bachofen M, Weibel ER: **Alterations of the gas exchange apparatus in adult respiratory insufficiency associated with septicemia.** *Am Rev Respir Dis* 1977, **116**:589-615.
- Fujita M, Kuwano K, Kunitake R, Hagimoto N, Miyazaki H, Kaneko Y, Kawasaki M, Maeyama T, Hara N: **Endothelial cell apoptosis in lipopolysaccharide-induced lung injury in mice.** *Int Arch Allergy Immunol* 1998, **117**:202-208.
- Kawasaki M, Kuwano K, Hagimoto N, Matsuba T, Kunitake R, Tanaka T, Maeyama T, Hara N: **Protection from lethal apoptosis in lipopolysaccharide-induced acute lung injury in mice by a caspase inhibitor.** *Am J Pathol* 2000, **157**:597-603.
- Kitamura Y, Hashimoto S, Mizuta N, Kobayashi A, Kooguchi K, Fujiwara I, Nakajima H: **Fas/FasL-dependent apoptosis of alveolar cells after lipopolysaccharide-induced lung injury in mice.** *Am J Respir Crit Care Med* 2001, **163**:762-769.
- Kim CFB, Jackson EL, Woolfenden AE, Lawrence S, Babar I, Vogel S, Crowley D, Bronson RT, Jacks T: **Identification of Bronchioalveolar Stem Cells in Normal Lung and Lung Cancer.** *Cell* 2005, **121**:823-835.
- Springer ML, Brazelton TR, Blau HM: **Not the usual suspects: the unexpected sources of tissue regeneration.** *J Clin Invest* 2001, **107**:1355-1356.
- Yamada M, Kubo H, Kobayashi S, Ishizawa K, Numasaki M, Ueda S, Suzuki T, Sasaki H: **Bone marrow-derived progenitor cells are important for lung repair after lipopolysaccharide-induced lung injury.** *J Immunol* 2004, **172**:1266-1272.
- Herzog EL, Van Arnam J, Hu BQ, Krause DS: **Threshold of Lung Injury Required for the Appearance of Marrow-Derived Lung Epithelia.** *Stem Cells* 2006, **24**:1986-1992.
- Krause DS: **Plasticity of marrow-derived stem cells.** *Gene Ther* 2002, **9**:754-758.
- Rafii S, Oz MC, Seldomridge JA, Ferris B, Asch AS, Nachman RL, Shapiro F, Rose EA, Levin HR: **Characterization of hematopoietic cells arising on the textured surface of left ventricular assist devices.** *Ann Thorac Surg* 1995, **60**:1627-1632.
- Asahara T, Murohara T, Sullivan A, Silver M, van der ZR, Li T, Witzenbichler B, Schattman G, Isner JM: **Isolation of putative progenitor endothelial cells for angiogenesis.** *Science* 1997, **275**:964-967.
- Krause DS, Theise ND, Collector MI, Henegariu O, Hwang S, Gardner R, Neutzel S, Sharkis SJ: **Multi-organ, multi-lineage engraftment by a single bone marrow-derived stem cell.** *Cell* 2001, **105**:369-377.
- Okamoto R, Yajima T, Yamazaki M, Kanai T, Mukai M, Okamoto S, Ikeda Y, Hibi T, Inazawa J, Watanabe M: **Damaged epithelia regenerated by bone marrow-derived cells in the human gastrointestinal tract.** *Nat Med* 2002, **8**:1011-1017.
- Kotton DN, Ma BY, Cardoso WV, Sanderson EA, Summer RS, Williams MC, Fine A: **Bone marrow-derived cells as progenitors of lung alveolar epithelium.** *Development* 2001, **128**:5181-5188.
- Suratt BT, Cool CD, Serls AE, Chen L, Varella-Garcia M, Shpall EJ, Brown KK, Worthen GS: **Human pulmonary chimerism after hematopoietic stem cell transplantation.** *Am J Respir Crit Care Med* 2003, **168**:318-322.
- Abe S, Boyer C, Liu X, Wen FQ, Kobayashi T, Fang Q, Wang X, Hashimoto M, Sharp JG, Rennard SI: **Cells derived from the circulation contribute to the repair of lung injury.** *Am J Respir Crit Care Med* 2004, **170**:1158-1163.
- Spencer H, Rampling D, Aurora P, Bonnet D, Hart SL, Jaffe A: **Transbronchial biopsies provide longitudinal evidence for epithelial chimerism in children following sex mismatched lung transplantation.** *Thorax* 2005, **60**:60-62.
- Sata M, Saiura A, Kunisato A, Tojo A, Okada S, Tokuhisa T, Hirai H, Makuuchi M, Hirata Y, Nagai R: **Hematopoietic stem cells differentiate into vascular cells that participate in the pathogenesis of atherosclerosis.** *Nat Med* 2002, **8**:403-409.
- Rocheffort GY, Vaudin P, Bonnet N, Pages JC, Domenech J, Charbord P, Eder V: **Influence of hypoxia on the domiciliation of mesenchymal stem cells after infusion into rats: possibilities of targeting pulmonary artery remodeling via cells therapies?** *Respir Res* 2005, **6**:125:125.
- Lagasse E, Connors H, Al Dhalimy M, Reitsma M, Dohse M, Osborne L, Wang X, Finegold M, Weissman IL, Grompe M: **Purified hematopoietic stem cells can differentiate into hepatocytes in vivo.** *Nat Med* 2000, **6**:1229-1234.
- Orlic D, Kajstura J, Chimenti S, Jakoniuk I, Anderson SM, Li B, Pickel J, McKay R, Nadal-Ginard B, Bodine DM, Leri A, Anversa P: **Bone marrow cells regenerate infarcted myocardium.** *Nature* 2001, **410**:701-705.
- Ferrari G, Cusella-De Angelis G, Coletta M, Paolucci E, Stornaiuolo A, Cossu G, Mavilio F: **Muscle regeneration by bone marrow-derived myogenic progenitors.** *Science* 1998, **279**:1528-1530.
- Hillebrands JL, Klatter FA, van den Hurk BM, Popa ER, Nieuwenhuis P, Rozing J: **Origin of neointimal endothelium and alpha-actin-positive smooth muscle cells in transplant arteriosclerosis.** *J Clin Invest* 2001, **107**:1411-1422.
- Pereira RF, Halford KW, O'Hara MD, Leeper DB, Sokolov BP, Pollard MD, Bagasra O, Prockop DJ: **Cultured adherent cells from marrow can serve as long-lasting precursor cells for bone, cartilage, and lung in irradiated mice.** *Proc Natl Acad Sci U S A* 1995, **92**:4857-4861.
- Epperly MW, Guo H, Grettton JE, Greenberger JS: **Bone marrow origin of myofibroblasts in irradiation pulmonary fibrosis.** *Am J Respir Cell Mol Biol* 2003, **29**:213-224.

32. Eglitis MA, Mezey E: **Hematopoietic cells differentiate into both microglia and macroglia in the brains of adult mice.** *Proc Natl Acad Sci U S A* 1997, **94**:4080-4085.
33. Mezey E, Chandross KJ, Harta G, Maki RA, Mc Kercher SR: **Turning blood into brain: cells bearing neuronal antigens generated in vivo from bone marrow.** *Science* 2000, **290**:1779-1782.
34. Kotton DN, Fabian AJ, Mulligan RC: **Failure of Bone Marrow to Reconstitute Lung Epithelium.** *Am J Respir Cell Mol Biol* 2005:2005-0175RC.
35. Tateishi-Yuyama E, Matsubara H, Murohara T, Ikeda U, Shintani S, Masaki H, Amano K, Kishimoto Y, Yoshimoto K, Akashi H, Shimada K, Iwasaka T, Imaizumi T: **Therapeutic angiogenesis for patients with limb ischaemia by autologous transplantation of bone-marrow cells: a pilot study and a randomised controlled trial.** *Lancet* 2002, **360**:427-435.
36. Assmus B, Schachinger V, Teupe C, Britten M, Lehmann R, Dobert N, Grunwald F, Aicher A, Urbich C, Martin H, Hoelzer D, Dimmeler S, Zeiher AM: **Transplantation of Progenitor Cells and Regeneration Enhancement in Acute Myocardial Infarction (TOP-CARE-AMI).** *Circulation* 2002, **106**:3009-3017.
37. Strauer BE, Brehm M, Zeus T, Kostering M, Hernandez A, Sorg RV, Kogler G, Wernet P: **Repair of Infarcted Myocardium by Autologous Intracoronary Mononuclear Bone Marrow Cell Transplantation in Humans.** *Circulation* 2002, **106**:1913-1918.
38. Assmus B, Honold J, Schachinger V, Britten MB, Fischer-Rasokat U, Lehmann R, Teupe C, Pistorius K, Martin H, Abolmaali ND, Tonn T, Dimmeler S, Zeiher AM: **Transcatheter Transplantation of Progenitor Cells after Myocardial Infarction.** *N Engl J Med* 2006, **355**:1222-1232.
39. Schachinger V, Erbs S, Elsasser A, Haberbosch W, Hambrecht R, Holschermann H, Yu J, Corti R, Mathey DG, Hamm CW, Suselbeck T, Assmus B, Tonn T, Dimmeler S, Zeiher AM, the REPA: **Intracoronary Bone Marrow-Derived Progenitor Cells in Acute Myocardial Infarction.** *N Engl J Med* 2006, **355**:1210-1221.
40. Lunde K, Solheim S, Aakhus S, Arnesen H, Abdelnoor M, Egeland T, Endresen K, Ilebakk A, Mangschau A, Fjeld JG, Smith HJ, Taraldsrud E, Groggaard HK, Bjornerheim R, Brekke M, Muller C, Hopp E, Ragnarsson A, Brinchmann JE, Forfang K: **Intracoronary Injection of Mononuclear Bone Marrow Cells in Acute Myocardial Infarction.** *N Engl J Med* 2006, **355**:1199-1209.
41. Janssens S, Dubois C, Bogaert J, Theunissen K, Deroose C, Desmet W, Kalantzi M, Herbots L, Sinnaeve P, Dens J, Maertens J, Rademakers F, Dymarkowski S, Gheysens O, Van Cleemput J, Bormans G, Nuyts J, Belmans A, Mortelmans L, Boogaerts M, Van de WF: **Autologous bone marrow-derived stem-cell transfer in patients with ST-segment elevation myocardial infarction: double-blind, randomised controlled trial.** *Lancet* 2006, **367**:1113-1121.
42. Meyer GP, Wollert KC, Lotz J, Steffens J, Lippolt P, Fichtner S, Hecker H, Schaefer A, Arseniev L, Hertenstein B, Ganser A, Drexler H: **Intracoronary bone marrow cell transfer after myocardial infarction: eighteen months' follow-up data from the randomized, controlled BOOST (BOne marrow transfer to enhance ST-elevation infarct regeneration) trial.** *Circulation* 2006, **113**:1287-1294.
43. Hill JM, Zalos G, Halcox JP, Schenke WH, Waclawiw MA, Quyyumi AA, Finkel T: **Circulating endothelial progenitor cells, vascular function, and cardiovascular risk.** *N Engl J Med* 2003, **348**:593-600.
44. Bull TM, Golpon H, Heibel RP, Solovey A, Cool CD, Tudor RM, Geraci MW, Voelkel NF: **Circulating endothelial cells in pulmonary hypertension.** *Thromb Haemost* 2003, **90**:698-703.
45. Bompais H, Chagraoui J, Canron X, Crisan M, Liu XH, Anjo A, Tolla-Le Port C, Leboeuf M, Charbord P, Bikfalvi A, Uzan G: **Human endothelial cells derived from circulating progenitors display specific functional properties as compared to mature vessel wall endothelial cells.** *Blood* 2004, **103**:2577-2584.
46. Werner N, Junk S, Laufs U, Link A, Walenta K, Bohm M, Nickenig G: **Intravenous Transfusion of Endothelial Progenitor Cells Reduces Neointima Formation After Vascular Injury.** *Circ Res* 2003, **93**:17e-24.
47. Espinosa-Heidmann DG, Caicedo A, Hernandez EP, Csaky KG, Cousins SW: **Bone marrow-derived progenitor cells contribute to experimental choroidal neovascularization.** *Invest Ophthalmol Vis Sci* 2003, **44**:4914-4919.
48. Xu Q, Zhang Z, Davison F, Hu Y: **Circulating progenitor cells regenerate endothelium of vein graft atherosclerosis, which is diminished in ApoE-deficient mice.** *Circ Res* 2003, **93**:e76-e86.
49. Sata M: **Circulating vascular progenitor cells contribute to vascular repair, remodeling, and lesion formation.** *Trends Cardiovasc Med* 2003, **13**:249-253.
50. Park S, Tepper OM, Galiano RD, Capla JM, Baharestani S, Kleinman ME, Pelo CR, Levine JP, Gurtner GC: **Selective recruitment of endothelial progenitor cells to ischemic tissues with increased neovascularization.** *Plast Reconstr Surg* 2004, **113**:284-293.
51. Hu Y, Davison F, Zhang Z, Xu Q: **Endothelial replacement and angiogenesis in arteriosclerotic lesions of allografts are contributed by circulating progenitor cells.** *Circulation* 2003, **108**:3122-3127.
52. Peinado VI, Ramirez J, Roca J, Rodriguez-Roisin R, Barbera JA: **Identification of Vascular Progenitor Cells in Pulmonary Arteries of Patients with Chronic Obstructive Pulmonary Disease.** *Am J Respir Cell Mol Biol* 2006, **34**:257-263.
53. Werner N, Kosiol S, Schiegl T, Ahlers P, Walenta K, Link A, Bohm M, Nickenig G: **Circulating endothelial progenitor cells and cardiovascular outcomes.** *N Engl J Med* 2005, **353**:999-1007.
54. Blann AD, Woywodt A, Bertolini F, Bull TM, Buyon JP, Clancy RM, Haubitz M, Heibel RP, Lip GY, Mancuso P, Sampol J, Solovey A, Dignat-George F: **Circulating endothelial cells. Biomarker of vascular disease.** *Thromb Haemost* 2005, **93**:228-235.
55. Burnham EL, Taylor WR, Quyyumi AA, Rojas M, Brigham KL, Moss M: **Increased Circulating Endothelial Progenitor Cells are Associated with Survival in Acute Lung Injury.** *Am J Respir Crit Care Med* 2005:200410-1325OC.
56. Yamada M, Kubo H, Ishizawa K, Kobayashi S, Shinkawa M, Sasaki H: **Increased circulating endothelial progenitor cells in patients with bacterial pneumonia: evidence that bone marrow derived cells contribute to lung repair.** *Thorax* 2005, **60**:410-413.
57. Mancuso P, Burlini A, Pruneri G, Goldhirsch A, Martinelli G, Bertolini F: **Resting and activated endothelial cells are increased in the peripheral blood of cancer patients.** *Blood* 2001, **97**:3658-3661.
58. Kahler CM, Wechselberger J, Hilbe W, Gschwendtner A, Colleselli D, Hinteregger B, Boneberg EM, Wiedermann CJ, Günsilius E, Hamacher J: **Endothelial progenitor cells home in the transplanted lung after ischemia-reperfusion injury.** *European Respiratory Journal* 2004, **2004**:30s.
59. Khakoo AY, Finkel T: **Endothelial progenitor cells.** *Annual Review of Medicine* 2005, **56**:79-101.
60. Novak K: **Angiogenesis: Trojan horses.** *Nat Rev Cancer* 2003, **3**:396.
61. Jamur MC, Grodzki AC, Moreno AN, de Mello LF, Pastor MV, Berenstein EH, Siraganian RP, Oliver C: **Identification and isolation of rat bone marrow-derived mast cells using the mast cell-specific monoclonal antibody AA4.** *J Histochem Cytochem* 2001, **49**:219-228.
62. Kahler CM, Herold M, Reinisch N, Wiedermann CJ: **Interaction of substance P with epidermal growth factor and fibroblast growth factor in cyclooxygenase-dependent proliferation of human skin fibroblasts.** *J Cell Physiol* 1996, **166**:601-608.
63. Stammberger U, Hamacher J, Hillinger S, Schmid RA: **sCR1sLeX ameliorates ischemia/reperfusion injury in experimental lung transplantation.** *J Thorac Cardiovasc Surg* 2000, **120**:1078-1084.
64. Günsilius E, Petzer AL, Duba HC, Kahler CM, Gastl G: **Circulating endothelial cells after transplantation.** *Lancet* 2001, **357**:1449-1450.
65. Nagaya N, Kangawa K, Kanda M, Uematsu M, Horio T, Fukuyama N, Hino J, Harada-Shiba M, Okumura H, Tabata Y, Mochizuki N, Chiba Y, Nishioka K, Miyatake K, Asahara T, Hara H, Mori H: **Hybrid cell-gene therapy for pulmonary hypertension based on phagocytosing action of endothelial progenitor cells.** *Circulation* 2003, **108**:889-895.
66. Zhao YD, Courtman DW, Deng Y, Kugathasan L, Zhang Q, Stewart DJ: **Rescue of monocrotaline-induced pulmonary arterial hypertension using bone marrow-derived endothelial-like progenitor cells: efficacy of combined cell and eNOS gene therapy in established disease.** *Circ Res* 2005, **96**:442-450.
67. Davie NJ, Crossno JT Jr., Frid MG, Hofmeister SE, Reeves JT, Hyde DM, Carpenter TC, Brunetti JA, McNiece IK, Stenmark KR:

- Hypoxia-induced pulmonary artery adventitial remodeling and neovascularization: contribution of progenitor cells.** *Am J Physiol Lung Cell Mol Physiol* 2004, **286**:L668-L678.
68. Murohara T, Ikeda H, Duan J, Shintani S, Sasaki K, Eguchi H, Onitsuka I, Matsui K, Imaizumi T: **Transplanted cord blood-derived endothelial precursor cells augment postnatal neovascularization.** *J Clin Invest* 2000, **105**:1527-1536.
 69. Kalka C, Masuda H, Takahashi T, Kalka-Moll WM, Silver M, Kearney M, Li T, Isner JM, Asahara T: **Transplantation of ex vivo expanded endothelial progenitor cells for therapeutic neovascularization.** *Proc Natl Acad Sci U S A* 2000, **97**:3422-3427.
 70. Grassmé H, Kirschnek S, Riethmueller J, Riehle A, von Kürthy G, Lang F, Weller M, Gulbins E: **CD95/CD95 ligand interactions of epithelial cells in host defense to *Pseudomonas aeruginosa*.** *Science* 2000, **290**:527-530.
 71. Stammberger U, Gaspert A, Hillinger S, Vogt P, Odermatt B, Weder W, Schmid RA: **Apoptosis induced by ischemia and reperfusion in experimental lung transplantation.** *Ann Thorac Surg* 2000, **69**:1532-1536.
 72. Matthay MA, Zimmerman GA, Esmon C, Bhattacharya J, Coller B, Doerschuk CM, Floros J, Gimbrone MA Jr., Hoffman E, Hubmayr RD, Leppert M, Matalon S, Munford R, Parsons P, Slutsky AS, Tracey KJ, Ward P, Gail DB, Harabin AL: **Future Research Directions in Acute Lung Injury: Summary of a National Heart, Lung, and Blood Institute Working Group.** *Am J Respir Crit Care Med* 2003, **167**:1027-1035.
 73. Jackson KA, Majka SM, Wang H, Pocius J, Hartley CJ, Majesky MW, Entman ML, Michael LH, Hirschi KK, Goodell MA: **Regeneration of ischemic cardiac muscle and vascular endothelium by adult stem cells.** *J Clin Invest* 2001, **107**:1395-1402.
 74. Moore MAS: **Putting the neo into neoangiogenesis.** *J Clin Invest* 2002, **109**:313-315.
 75. Badorff C, Brandes RP, Popp R, Rupp S, Urbich C, Aicher A, Fleming I, Busse R, Zeiher AM, Dimmeler S: **Transdifferentiation of blood-derived human adult endothelial progenitor cells into functionally active cardiomyocytes.** *Circulation* 2003, **107**:1024-1032.
 76. Gulati R, Jevremovic D, Peterson TE, Chatterjee S, Shah V, Vile RG, Simari RD: **Diverse origin and function of cells with endothelial phenotype obtained from adult human blood.** *Circ Res* 2003, **93**:1023-1025.
 77. Terada N, Hamazaki T, Oka M, Hoki M, Mastalerz DM, Nakano Y, Meyer EM, Morel L, Petersen BE, Scott EW: **Bone marrow cells adopt the phenotype of other cells by spontaneous cell fusion.** *Nature* 2002, **416**:542-545.
 78. Wang X, Willenbring H, Akkari Y, Torimaru Y, Foster M, Al Dhalimy M, Lagasse E, Finegold M, Olson S, Grompe M: **Cell fusion is the principal source of bone-marrow-derived hepatocytes.** *Nature* 2003, **422**:897-901.
 79. Vassilopoulos G, Wang PR, Russell DW: **Transplanted bone marrow regenerates liver by cell fusion.** *Nature* 2003, **422**:901-904.
 80. Rehman J, Li J, Orschell CM, March KL: **Peripheral blood "endothelial progenitor cells" are derived from monocyte/macrophages and secrete angiogenic growth factors.** *Circulation* 2003, **107**:1164-1169.
 81. Voswinckel R, Ziegelhoeffer T, Heil M, Kostin S, Breier G, Mehling T, Haberberger R, Clauss M, Gaumann A, Schaper W, Seeger W: **Circulating vascular progenitor cells do not contribute to compensatory lung growth.** *Circ Res* 2003, **93**:372-379.
 82. Theise ND, Nimmakayalu M, Gardner R, Illei PB, Morgan G, Teperman L, Henegariu O, Krause DS: **Liver from bone marrow in humans.** *Hepatology* 2000, **32**:11-16.
 83. Orlic D, Kajstura J, Chimenti S, Limana F, Jakoniuk I, Quaini F, Nadal-Ginard B, Bodine DM, Leri A, Anversa P: **Mobilized bone marrow cells repair the infarcted heart, improving function and survival.** *Proc Natl Acad Sci U S A* 2001, **98**:10344-10349.
 84. Wollert KC, Meyer GP, Lotz J, Ringes-Lichtenberg S, Lippolt P, Breidenbach C, Fichtner S, Korte T, Hornig B, Messinger D: **Intracoronary autologous bone-marrow cell transfer after myocardial infarction: the BOOST randomised controlled clinical trial.** *The Lancet* 2004, **364**:141-148.
 85. Vernooij JH, Dentener MA, van Suylen RJ, Buurman WA, Wouters EF: **Intratracheal instillation of lipopolysaccharide in mice induces apoptosis in bronchial epithelial cells: no role for tumor necrosis factor-alpha and infiltrating neutrophils.** *Am J Respir Cell Mol Biol* 2001, **24**:569-576.
 86. Heeschen C, Aicher A, Lehmann R, Fichtschere S, Vasa M, Urbich C, Mildner-Rihm C, Martin H, Zeiher AM, Dimmeler S: **Erythropoietin is a potent physiologic stimulus for endothelial progenitor cell mobilization.** *Blood* 2003, **102**:1340-1346.
 87. Schuch G, Heymach JV, Nomi M, Machluf M, Force J, Atala A, Eder JP Jr., Folkman J, Soker S: **Endostatin inhibits the vascular endothelial growth factor-induced mobilization of endothelial progenitor cells.** *Cancer Res* 2003, **63**:8345-8350.
 88. Dorrell MI, Otani A, Aguilar E, Moreno SK, Friedlander M: **Adult bone marrow-derived stem cells utilize R-cadherin to target sites of neovascularization in the developing retina.** *Blood* 2004.
 89. Grefte A, van der GM, van Son W, The TH: **Circulating cytomegalovirus (CMV)-infected endothelial cells in patients with an active CMV infection.** *J Infect Dis* 1993, **167**:270-277.
 90. Monestiroli S, Mancuso P, Burlini A, Pruneri G, Dell'Agnola C, Gobbi A, Martinelli G, Bertolini F: **Kinetics and viability of circulating endothelial cells as surrogate angiogenesis marker in an animal model of human lymphoma.** *Cancer Res* 2001, **61**:4341-4344.
 91. Beerepoot LV, Mehra N, Vermaat JS, Zonnenberg BA, Gebbink MF, Voest EE: **Increased levels of viable circulating endothelial cells are an indicator of progressive disease in cancer patients.** *Ann Oncol* 2004, **15**:139-145.
 92. Hilbe W, Dirnhofer S, Oberwasserlechner F, Schmid T, Gunsilius E, Hilbe G, Woll E, Kahler CM: **CD133 positive endothelial progenitor cells contribute to the tumour vasculature in non-small cell lung cancer.** *Journal of Clinical Pathology* 2004, **57**:965-969.
 93. Shinde P V, Friedrich EB, Wolley AE, Gerszten RE, Allport JR, Weissleder R: **Bone marrow-derived lin(-)c-kit(+)-Sca-1+ stem cells do not contribute to vasculogenesis in Lewis lung carcinoma.** *Neoplasia* 2005, **7**:234-240.
 94. Griese DP, Ehsan A, Melo LG, Kong D, Zhang L, Mann MJ, Pratt RE, Mulligan RC, Dzau VJ: **Isolation and transplantation of autologous circulating endothelial cells into denuded vessels and prosthetic grafts: implications for cell-based vascular therapy.** *Circulation* 2003, **108**:2710-2715.
 95. Conte MS, Birinyi LK, Miyata T, Fallon JT, Gold HK, Whittemore AD, Mulligan RC: **Efficient repopulation of denuded rabbit arteries with autologous genetically modified endothelial cells.** *Circulation* 1994, **89**:2161-2169.
 96. Rafii S, Lyden D: **Therapeutic stem and progenitor cell transplantation for organ vascularization and regeneration.** *Nat Med* 2003, **9**:702-712.
 97. Grove JE, Lutzko C, Priller J, Henegariu O, Theise ND, Kohn DB, Krause DS: **Marrow-derived cells as vehicles for delivery of gene therapy to pulmonary epithelium.** *Am J Respir Cell Mol Biol* 2002, **27**:645-651.

Publish with **BioMed Central** and every scientist can read your work free of charge

"BioMed Central will be the most significant development for disseminating the results of biomedical research in our lifetime."

Sir Paul Nurse, Cancer Research UK

Your research papers will be:

- available free of charge to the entire biomedical community
- peer reviewed and published immediately upon acceptance
- cited in PubMed and archived on PubMed Central
- yours — you keep the copyright

Submit your manuscript here:
http://www.biomedcentral.com/info/publishing_adv.asp

