

POSTER PRESENTATION

Open Access

Expiratory time constants by electrical impedance tomography in hypoxemic and hypercapnic acute lung failure - a feasibility study

PL Róka^{1,2*}, AD Waldmann², F Ender¹, SH Bohm², W Windisch^{3,4}, S Strassmann³, C Karagiannidis^{3,4}

From ESICM LIVES 2015

Berlin, Germany. 3-7 October 2015

Introduction

During relaxed breathing expiration can be compared to a RC-circuit with R being the airway resistance, C the respiratory system compliance and $\tau = R \cdot C$ the expiratory time constant. For the adult respiratory system, the normal τ is around 0.8 s. Different lung pathologies have different time constants. Two common disease types are the acute respiratory distress syndrome (ARDS) and the chronic obstructive pulmonary disease (COPD). ARDS is characterized by stiff or noncompliant lungs with low compliance and normal or lower resistance which results in shorter τ . COPD is characterized by impaired airflow or high airways resistance and high compliance which results higher τ .

τ reveals information about respiratory mechanics and the time required for the lungs to empty. Traditional pulmonary function tests provide global information only. EIT is a non-invasive real-time imaging technology which determines changes of lung volumes on a regional basis assuming that local impedance changes are proportional to local changes in lung volume. Pikkemaat [1] introduced the method to calculate regional τ , what we improved and applied in 10 patients.

Methods

Time constants were calculated from global and regional volume signals measured with EIT in 10 patients with hypoxemic (mainly ARDS) or hypercapnic (COPD) lung failure. Since the onset of expiration is mostly dominated

by inertial effects it does not show an exponential behaviour [2], it is advised [3] to start analysis only at 75% of the signal amplitude. Skipping the first 25% of every signal's amplitude we analysed the global and regional temporal behaviour of each pixel until the end of their expiration of an EIT sequence by fitting in a nonlinear least square manner using MATLAB (The MathWorks, USA) an exponential curve whose decay provides the τ .

EIT data were measured with *Swisstom BB²* (Swisstom AG, Switzerland) and the time constants of ensemble averaged of 10 consecutive breaths of 5 patients with COPD and 5 with ARDS were determined. Only τ values within the range of 0.05 and 5 sec stemming from curve fits with an R^2 higher than 0.6 were considered thereby excluding poorly ventilated areas and those in which curve fitting was poor, see Table 1. Overall results for ARDS and COPD are expressed as mean \pm SD.

Results and Conclusions

In these 10 patients global τ was 0.56 ± 0.13 s in ARDS and 1.26 ± 0.29 s in COPD, and the mean of regional τ was 0.57 ± 0.12 s in ARDS and 1.17 ± 0.20 s in COPD. In ventilated areas their values and distribution were within the expected range. ARDS lungs were "faster" whereas COPD-lungs were "slower" reflecting the airway diseases. We showed that EIT can be used to determine global and regional time constants from passive exhalation and distinguish different lung pathologies.

¹Budapest University of Technology and Economics, Budapest, Hungary
Full list of author information is available at the end of the article

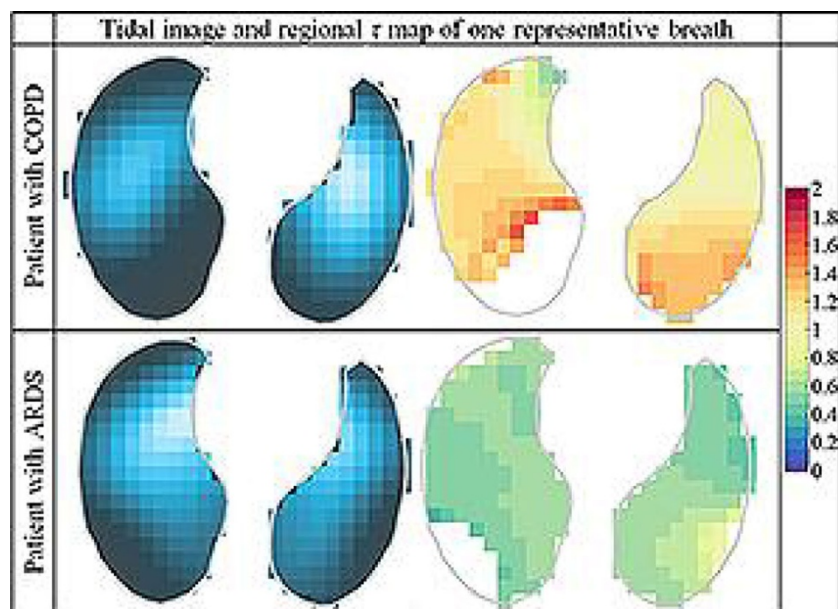


Figure 1 [Table 1: Ventilation and τ distribution].

Authors' details

¹Budapest University of Technology and Economics, Budapest, Hungary.
²Swisstrom AG, Landquart, Switzerland. ³Kliniken der Stadt Köln, Pneumology and Critical Care Medicine, Cologne, Germany. ⁴Witten/Herdecke University, Witten, Germany.

Published: 1 October 2015

References

1. Pikkemaat R: *IFMBE Proc* 2009, **25**/7:604-607.
2. Guttman J: *Eur. Respir. J.* 1995, **8**/1:114-120.
3. Lourens M: *Intens. Care Med* 2000, **26**/11:1612-1618.

doi:10.1186/2197-425X-3-S1-A1000

Cite this article as: Róka et al.: Expiratory time constants by electrical impedance tomography in hypoxemic and hypercapnic acute lung failure - a feasibility study. *Intensive Care Medicine Experimental* 2015 **3** (Suppl 1):A1000.

Submit your manuscript to a SpringerOpen[®] journal and benefit from:

- Convenient online submission
- Rigorous peer review
- Immediate publication on acceptance
- Open access: articles freely available online
- High visibility within the field
- Retaining the copyright to your article

Submit your next manuscript at ► springeropen.com