



## Long-term results of modified bentall procedures : 18-year experience of the flanged technique

Takashi Igarashi<sup>1)</sup>, Hirono Satokawa<sup>1)</sup>, Yoichi Sato<sup>2)</sup>, Shinya Takase<sup>1)</sup>, Hiroki Wakamatsu<sup>1)</sup>,  
Yuki Seto<sup>1)</sup>, Hiroyuki Kurosawa<sup>1)</sup>, Masumi Iwai-Takano<sup>1)</sup>, Tsuyoshi Fujimiya<sup>1)</sup>, Hiroharu Shinjo<sup>1)</sup>,  
Keiichi Ishida<sup>1)</sup> and Hitoshi Yokoyama<sup>1)</sup>

<sup>1)</sup>Department of Cardiovascular Surgery, Fukushima Medical University, Fukushima, Japan, <sup>2)</sup>Department of Cardiovascular Surgery, Yonezawa City Hospital, Yamagata, Japan

(Received April 28, 2021, accepted October 11, 2021)

### Abstract

**Objectives :** To evaluate the early and late outcomes of the modified Bentall procedure with the flanged technique.

**Methods :** We reviewed the medical records of 63 patients who had undergone root replacement by the modified Bentall procedure at our institute between January 2001 and December 2018. In most cases, we adopted a composite graft constructed with a mechanical valve or bioprosthesis and a Dacron graft by the flanged technique. Since 2011, we have used Valsalva grafts.

**Results :** Mean age  $57 \pm 16$  years, range 16-80, male 43 cases. The mean follow-up was  $75 \pm 56$  months (range 0-216). Through April 1, 2020, we could follow up on 61 cases (97%) within a six-month period. Hospital mortality was 7.9% (4.8% in elective cases). In late follow-up, eight deaths were observed. In the bio-Bentall group ( $n=26$ ), no deaths or major adverse valve-related events (MARVEs) occurred. In the mechanical Bentall group ( $n=37$ ), seven cases of MARVEs, including two cerebral hemorrhages and one cerebral embolism, were observed. All patients were free from MARVEs at 5 years post procedure in the bio-Bentall group, and 93.8% and 76.8% were event-free at 5 years and 10 years, respectively, in the mechanical Bentall group.

**Conclusions :** The 18-year results of the modified Bentall procedure were acceptable, providing excellent outcomes in the bio-Bentall group. The flanged technique enabled the use of a larger prosthesis, which may have resulted in good durability with the bio-Bentall procedure.

**Key words :** modified Bentall procedure, bio-Bentall, flanged technique, Valsalva graft, long-term outcome

### Introduction

The Bentall procedure<sup>1)</sup> is the gold-standard treatment for aortic root pathologies and is now used worldwide. This procedure is a reliable technique for many cardiac surgeons and its reported clinical results are acceptable<sup>2-10)</sup>. We applied the modified Bentall procedure in which coronary reconstruction was performed by the Carrel button technique as the first choice for patients with aortic root patholo-

gies. We also applied the flanged technique to construct a composite graft<sup>11)</sup>. In this study, we evaluated the early and long-term results of modified Bentall procedures with the flanged technique and discussed indications for bio- and mechanical Bentall procedures.

### Patients and methods

This was a retrospective single-center study.

Corresponding author : Takashi Igarashi, MD, PhD. E-mail : igao5150@fmu.ac.jp

©2021 The Fukushima Society of Medical Science. This article is licensed under a Creative Commons [Attribution-NonCommercial-ShareAlike 4.0 International] license.  
<https://creativecommons.org/licenses/by-nc-sa/4.0/>

Informed consent was obtained from all patients at initial admission. Our institutional review board approved this study (approval number : 2019-238).

### Patients

We reviewed the medical records of 63 patients who had undergone root replacement by the modified Bentall procedure at our institute between January 2001 and December 2018 (mean age  $57 \pm 16$  years, range 16-80, male 43 cases). The mean follow-up was  $75 \pm 56$  months (range 0-216). Through April 1, 2020, we could follow up on 61 cases (97%).

### Surgical Procedures

Under general anesthesia and mechanical ventilation, the chest was opened via the median full-sternotomy approach. Extracorporeal circulation was established by perfusion from the ascending aorta and drainage from the superior and inferior vena cava. A left ventricular vent was inserted from the right superior pulmonary vein. During cross-clamping of the ascending aorta, antegrade and retrograde blood cardioplegia was administered every 20 minutes to maintain cardiac arrest. We used a composite graft, which was prepared in the operating room using an artificial aortic valve and a Dacron graft, in most cases. A bioprosthesis was selected if a patient was older than 65 years old. In younger patients, a mechanical valve was used. As a result, 26 patients underwent the bio-Bentall procedure. The choice of valve model was up to the surgeon. The valve size was selected according to the patient's body surface area, securing enough effective orifice area. A graft 3-5 mm larger than the valve was used. Until the introduction of the Valsalva graft (Valsalva™ Ante-Flo, TERUMO, Tokyo, Japan) in April 2011, we used a straight Dacron graft. A composite graft was then constructed by the flanged technique as reported by Yakut<sup>11</sup>. Everting pledgeted 2-0 polyester sutures were placed on the aortic annulus and passed through the Valsalva graft collar below the sewing cuff of the valve prosthesis (Figure 1a, b). To secure hemostasis of the aortic annulus, an additional running suture with 4-0 polypropylene was performed at the proximal anastomosis of the graft (Figure 1c). The coronary ostiums were trimmed with a 7-mm long cuff of the aortic wall and were anastomosed with a 5-0 polypropylene running suture by the Carrel button technique. In cases with bioprosthesis, antico-

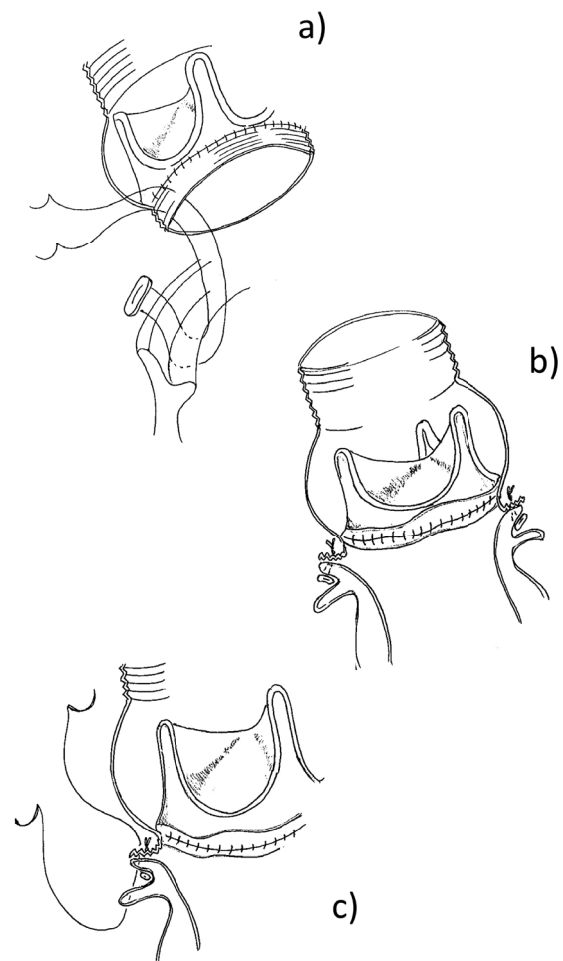


Fig. 1. Flanged technique using composite graft (bioprosthesis and Valsalva graft).

1a and 1b) Everting pledgeted 2-0 polyester sutures were placed on the aortic annulus and passed through the Valsalva graft collar below the sewing cuff of the valve prosthesis.

1c) To secure hemostasis of the aortic annulus, an additional running suture with 4-0 polypropylene was performed at the proximal anastomosis of the graft.

agulation therapy with warfarin was maintained for 3 months as the postoperative antithrombotic therapy.

Antiplatelet therapy was then continued with aspirin.

### Follow-up

After discharge, the patients received regular medical follow-up at our hospital or outpatient clinic. The patients' condition was checked by medical record, direct telephone interview, and questionnaire research.

### *Definitions of Major Adverse Valve-Related Events*

Major adverse valve-related events include the following: (1) valve-related mortality; (2) all valve-related morbidity (structural valve deterioration, nonstructural dysfunction, valve thrombosis, embolism, bleeding events, operated valve endocarditis, and reintervention); and (3) need for a new permanent pacemaker or defibrillator within 14 days after the valve intervention<sup>12</sup>.

### *Echocardiographic Evaluation*

Ventricular and valvular functions were evaluated with transthoracic echocardiography using standard views according to current guidelines<sup>13</sup>. Aortic regurgitation and stenosis were graded as mild, moderate, moderate-severe, and severe. Moderate aortic stenosis was defined as a mean systolic aortic valve pressure gradient of  $\geq 20$  mmHg<sup>14</sup>.

### *Statistical Analysis*

Statistical analysis was performed using the Statistical Package for Social Sciences, ver. 25 (SPSS Inc., Chicago, Illinois, USA). Preoperative characteristics, operative data and postoperative early results were analyzed. Data were expressed as means  $\pm$  standard deviation with range for continuous variables. Categorical variables were expressed as numbers and percentages. In the univariable analyses, continuous and categorical variables were compared using the Student's *t*-test,  $\chi^2$ , or Fisher's exact test as appropriate (Fisher's exact test was used only when one of the four cells of a 2 $\times$ 2 table had less than five observations). Survival curves were estimated using the Kaplan-Meier method. All tests were two-sided, with statistical significance set at 0.05.

## **Results**

### *Perioperative Data and Early Results*

Preoperative patient characteristics are summarized in Table 1. Twenty-eight patients (44%) with annulo-aortic ectasia, 19 (30%) with root aneurysm, 12 (19%) with aortic dissection, 3 (5%) with bicuspid aortic valve, 37 (59%) with more than moderate aortic regurgitation, 5 (8%) with infective endocarditis, 3 (5%) with root abscess, and 11 (18%) with Marfan syndrome were included in our study. Table 2 shows the operative data and early

results. As a concomitant procedure, coronary artery bypass grafting (12 cases, 19%), aortic arch repair (6 cases, 10%) and other valve procedure (8 cases, 13%) were performed. The Valsalva graft was used in 19 cases (30%). The aorta cross-clamping time was  $197 \pm 62$  minutes. The extracorporeal circulation time was  $256 \pm 97$  minutes. Hospital mortality was 7.9%. Mortality of elective surgery was 4.8%. The causes of in-hospital death were as follows: one systemic inflammatory response syndrome, one pneumonia, one multiple organ failure due to low output syndrome, one sepsis and one intestinal ischemia due to aortic dissection.

### *Valve Size of Bioprosthesis*

The type and number of bioprostheses and mechanical valves are summarized in Table 3. Carpentier-Edwards Perimount bioprosthesis 25 mm in size was most frequently used (10 cases, 38%) in patients who underwent the bio-Bentall procedure.

### *Long-Term Results in Late Follow-up*

Table 4 shows the long-term results in late follow-up. Eight deaths were observed in the late follow-up. In the bio-Bentall group, only two patients died due to cancer, and there were no deaths caused by cardiac or cerebrovascular events. However, in the mechanical Bentall group, six deaths, including one sudden death, one due to hemoptysis, one by congestive heart failure, and two during reoperations due to prosthetic valve endocarditis, were observed. In the bio-Bentall group, there were no major adverse cardiac or cerebrovascular events. In the mechanical Bentall group, two cerebral hemorrhages and one cerebral embolism were observed. Figure 2a shows the results of the Kaplan-Meier analysis regarding freedom from all-cause death. In the bio-Bentall group, the rate of freedom from all-cause death at 5 years was 94.1%, and the rates at 5 and 10 years in the mechanical Bentall group were 93.1% and 79.3%, respectively.

Figure 2b indicates the results of the Kaplan-Meier analysis regarding freedom from major adverse valve-related events (MAVREs). In the bio-Bentall group, the rate of freedom from cardiac events was 100% at 5 years, and the rates at 5 and 10 years in the mechanical Bentall group were 93.8% and 76.8%, respectively (one sudden death, one congestive heart failure, two reoperations due to prosthetic valve endocarditis, two cerebral hem-

Table 1. Patient Characteristics

| Variables                           | Total<br>( <i>n</i> = 63) (%) | Range     | Bio-Bentall<br>( <i>n</i> = 26) | Mechanical Bentall<br>( <i>n</i> = 37) | <i>p</i> |
|-------------------------------------|-------------------------------|-----------|---------------------------------|--|----------|
| Age (y)                             | 57±16                         | 16-81     | 63±15                           | 52±13                                  | 0.003    |
| Female gender                       | 20 (32)                       |           | 10 (38)                         | 10 (27)                                | 0.435    |
| Height (cm)                         | 165±10                        | 142-191   | 166±8                           | 165±12                                 | 0.814    |
| Weight (kg)                         | 60±12                         | 30-84     | 60±12                           | 61±12                                  | 0.754    |
| Body surface area (m <sup>2</sup> ) | 1.66±0.19                     | 1.19-2.07 | 1.67±0.1                        | 1.65±0.2                               | 0.636    |
| Hypertension                        | 37 (59)                       |           | 18 (69)                         | 19 (51)                                | 0.268    |
| Dyslipidemia                        | 11 (17)                       |           | 4 (15)                          | 7 (19)                                 | 0.447    |
| Diabetes mellitus                   | 5 (8)                         |           | 2 (8)                           | 3 (8)                                  | 0.636    |
| Smoking                             | 21 (33)                       |           | 8 (31)                          | 13 (35)                                | 0.589    |
| COPD                                | 8 (13)                        |           | 4 (15)                          | 4 (11)                                 | 0.473    |
| CVA                                 | 11 (18)                       |           | 6 (23)                          | 5 (14)                                 | 0.297    |
| CAD                                 | 10 (16)                       |           | 5 (19)                          | 5 (14)                                 | 0.437    |
| OMI                                 | 2 (3)                         |           | 1 (4)                           | 1 (3)                                  | 0.677    |
| Atrial fibrillation                 | 8 (13)                        |           | 5 (19)                          | 3 (8)                                  | 0.206    |
| CKD                                 | 6 (10)                        |           | 6 (23)                          | 0                                      | 0.004    |
| Creat (mg/dL)                       | 1±0.84                        | 0.42-6.86 | 1.15±1.2                        | 0.87±0.3                               | 0.222    |
| PAD                                 | 1 (2)                         |           | 1 (4)                           | 0                                      | 0.429    |
| Prev. cardiac surgery               | 16 (25)                       |           | 4 (15)                          | 12 (32)                                | 0.095    |
| AAE                                 | 28 (44)                       |           | 13 (50)                         | 15 (41)                                | 0.608    |
| Root aneurysm                       | 19 (30)                       |           | 10 (38)                         | 9 (24)                                 | 0.225    |
| Aortic dissection                   | 12 (19)                       |           | 4 (15)                          | 8 (22)                                 | 0.342    |
| BAV                                 | 3 (5)                         |           | 0                               | 3 (8)                                  | 0.18     |
| Aortic stenosis                     | 4 (6)                         |           | 0                               | 4 (11)                                 | 0.099    |
| More than moderate AR               | 37 (59)                       |           | 18 (69)                         | 19 (51)                                | 0.268    |
| Infective endocarditis              | 5 (8)                         |           | 2 (8)                           | 3 (8)                                  | 0.636    |
| Pseudo aneurysm                     | 2 (3)                         |           | 0                               | 2 (5)                                  | 0.323    |
| Root abscess                        | 3 (5)                         |           | 1 (4)                           | 2 (5)                                  | 0.608    |
| Aortitis                            | 1 (2)                         |           | 0                               | 1 (3)                                  | 0.571    |
| Marfan syndrome                     | 11 (18)                       |           | 3 (12)                          | 8 (22)                                 | 0.21     |
| NYHA classification                 | 1.38±0.7                      |           | 1.41±0.7                        | 1.36±0.6                               | 0.778    |
| Echocardiography                    |                               |           |                                 |  |          |
| LVDd (mm)                           | 59±10                         | 37-76     | 61±9                            | 58±10                                  | 0.252    |
| LVDs (mm)                           | 40±10                         | 25-66     | 42±10                           | 37±9                                   | 0.082    |
| LVEF (%)                            | 56±11                         | 32-76     | 53±10                           | 59±11                                  | 0.03     |

AAE, annuloaortic ectasia ; AR, aortic regurgitation ; BAV, bicuspid aortic valve ; CAD, coronary artery disease ; CKD, chronic kidney disease ; COPD, chronic obstructive pulmonary disease ; CVA, cerebrovascular accident ; LVDd, diastolic left ventricular diameter ; LVDs, systolic left ventricular diameter ; LVEF, left ventricular ejection fraction ; OMI, old myocardial infarction ; PAD, peripheral artery disease.

orrhages, and one cerebral embolism).

#### Valve Function of Bio-prosthesis in Late Follow-up

Echocardiographic follow-up was performed in 22 cases (96%) in the bio-Bentall group. Figure 2c shows the results of the Kaplan-Meier analysis regarding freedom from more than moderate aortic stenosis due to structural valve deterioration in the

bio-Bentall group (*n* = 22). The rates of freedom from more than moderate aortic stenosis at 5 and 10 years were 100% and 85.7%, respectively. Figure 3 shows the results of the Kaplan-Meier analysis regarding freedom from severe aortic stenosis due to structural valve deterioration in the bio-Bentall group (*n* = 22). The rate of freedom from severe aortic stenosis due to SVD was 100% at both 5 years and 10 years.

Table 2. Operative Data and Early Results

| Variables                                    | Total (n=63) | Range   |
|--|--------------|---------|
| AoX time (minutes)                           | 197±62       | 118-419 |
| ECC time (minutes)                           | 256±97       | 141-615 |
| Concomitant procedure                        |              |         |
| CABG   | 12 (19)      |         |
| Arch repair                                  | 6 (10)       |         |
| Other valve                                  | 8 (13)       |         |
| Valsalva graft use                           | 19 (30)      |         |
| ICU stay (days)                              | 3.5±3.8      | 1-18    |
| Hospital stay (days)                         | 23±11        | 1-55    |
| In-hospital death                            | 5            |         |
| Hospital mortality (%)                       | 7.9          |         |
| Mortality of elective surgery (%)            | 4.8          |         |
| Cause of in-hospital death                   |              |         |
| SIRS   | 1            |         |
| Peumonia                                     | 1            |         |
| MOF due to LOS                               | 1            |         |
| Sepsis                                       | 1            |         |
| Intestinal ischemia due to aortic dissection | 1            |         |

AoX, aorta cross-clamp ; CABG, coronary artery by-pass grafting ; ECC, extracorporeal circulation ; ICU, intensive care unit ; LOS, low output syndrome ; MOF, multiple organ failure ; SIRS, systemic inflammatory response syndrome.

Table 3. Valve Size

| Valve model of bioprosthesis |    | Valve model of mechanical prosthesis |   |              |   |
|------------------------------|----|--------------------------------------|---|--------------|---|
| CEP 21                       | 4  | SJM 17                               | 1 | CM 21        | 2 |
| CEP 23                       | 6  | SJM 19                               | 3 | CM 23        | 1 |
| CEP 25                       | 10 | SJM 21                               | 6 | CM 26        | 1 |
| CEP 27                       | 1  | SJM 23                               | 9 | Mira 23      | 2 |
| Mosaic 21                    | 1  | SJM 25                               | 1 | Carboseal 21 | 2 |
| Mosaic 23                    | 2  | SJM 27                               | 2 | Carboseal 23 | 3 |
| Trifecta 23                  | 1  | SJM 29                               | 1 | Carboseal 25 | 1 |
| Epic 21                      | 1  | SJM 31                               | 1 | Carboseal 27 | 1 |

CEP, Carpentier-Edwards Perimount ; SJM, St. Jude Medical ; CM, Carbomedics

### Discussion

The Bentall procedure is standard therapy for aortic root pathologies. We have consistently performed the modified Bentall procedure for patients of aortic root replacement since 2001. The current study shows excellent long-term outcomes in late follow-up, especially among patients of the bio-Bentall procedure. During the follow-up, no MAVRES were observed in the patients who received the bio-Bentall procedure. Castrovinci *et al.* reported a

Table 4. Long-term Results (mean follow-up 75 ± 56 months, range 0-216)

| Variables           | Total (n = 58) | Bio-Bentall (n = 23) | Mechanical Bentall (n = 35) |
|---------------------|----------------|----------------------|-----------------------------|
| Death               | 8              | 2                    | 6                           |
| Cause of death      |                |                      |                             |
| Sudden death        | 1              | 0                    | 1                           |
| Hemoptysis          | 1              | 0                    | 1                           |
| CHF                 | 1              | 0                    | 1                           |
| PVE                 | 2              | 0                    | 2                           |
| Pneumonia           | 1              | 0                    | 1                           |
| Cancer              | 2              | 2                    | 0                           |
| MAVRES              | 3              | 0                    | 3                           |
| Cerebral hemorrhage | 2              | 0                    | 2                           |
| Cerebral embolism   | 1              | 0                    | 1                           |

CHF, congestive heart failure ; MAVRES, major adverse valve-related events ; PVE, prosthetic valve endocarditis.

systematic review of aortic root replacement with biological valved conduits<sup>3)</sup>. They showed that the rates of freedom from all-cause death at 5 and 10 years were 76% and 58%, respectively, and the rate of freedom from reoperation at 5 years was 90%. In the current study, the rate of freedom from severe aortic stenosis due to structural valve deterioration was 100% at 10 years, an excellent result. Bourguignon *et al.* showed very long-term outcomes of the Carpentier-Edwards Perimount Valve in aortic position<sup>15)</sup>. In that study, 2,559 patients underwent aortic valve replacement with Carpentier-Edwards Perimount Valve. The valve size was 19 mm in 384 patients (13.9%), 21 mm in 888 patients (32.2%) and 23 mm in 924 patients (33.5%). The rate of severe SVD (severe aortic stenosis or regurgitation) was 94.2% at 10 years and 78.6% at 15 years.

During the observation period, no reoperation was required among the patients who underwent the bio-Bentall procedure. The longer durability after the bio-Bentall procedure resulted in favorable long-term outcomes. These results may be due to the larger bioprosthesis used as the composite graft. In the cases using a larger bioprosthesis, it takes longer for clinically significant and/or symptomatic structural valve deterioration to occur. Issa *et al.* reported that small bioprosthesis size independently predicted structural valve deterioration<sup>16)</sup>.

Johnston *et al.* reported a long-term series of Carpentier-Edwards Perimount aortic valves in aortic valve replacement<sup>17)</sup>. Among their 12,569 patients, a 23-mm valve was most frequently used (n = 4,145, 33%), followed by a 21-mm valve

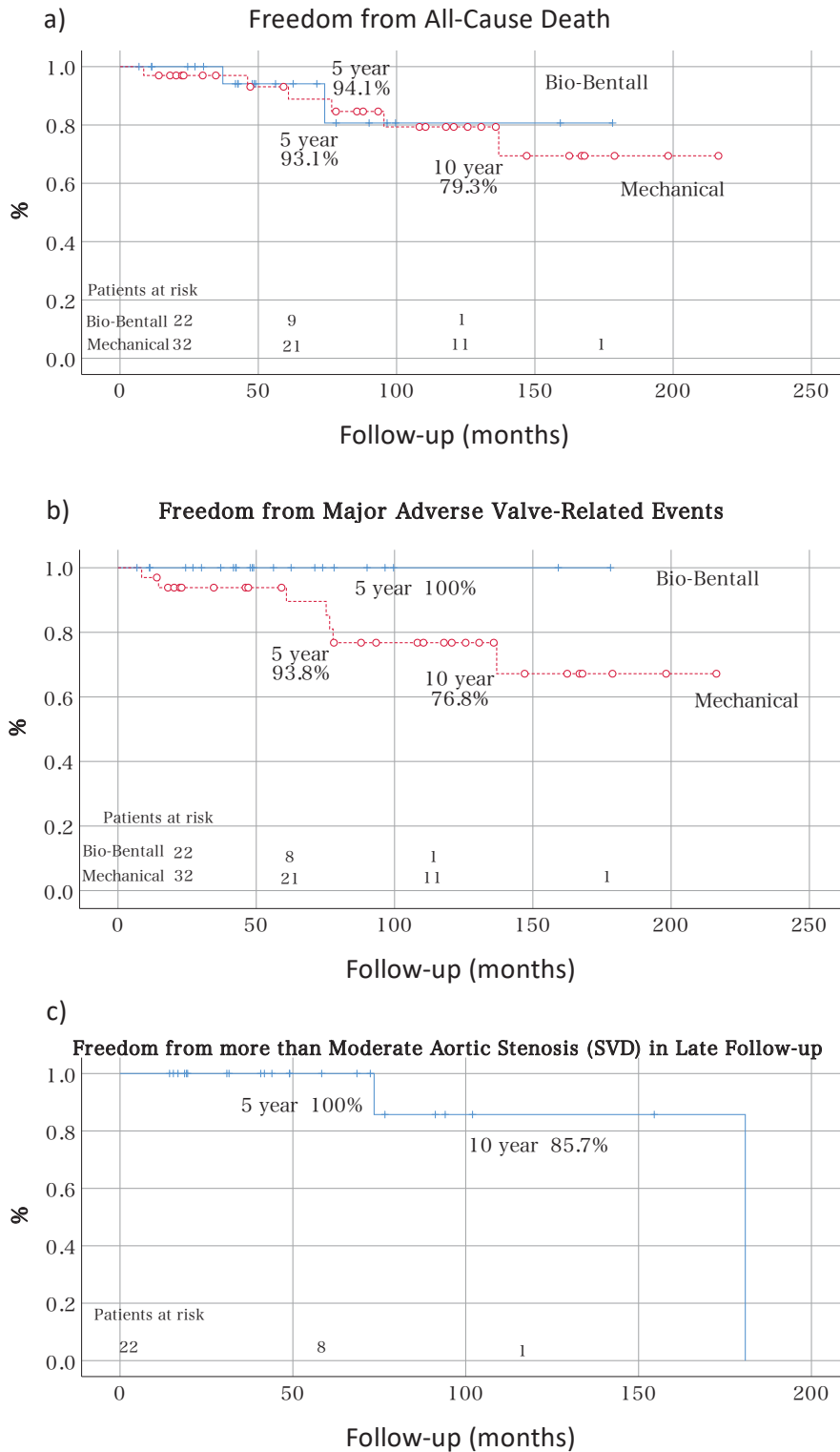


Fig. 2. Kaplan-Meier analysis of freedom from all-cause death, MAVRE, and SVD.  
 a) In the bio-Bentall group, the rate of freedom from all-cause death at 5 years was 94.1%, and the rates at 5 and 10 years in the mechanical Bentall group were 93.1% and 79.3%, respectively.  
 b) In the bio-Bentall group, the rate of freedom from cardiac events was 100% at 5 years, and the rates at 5 and 10 years in the mechanical Bentall group were 93.8% and 76.8%.  
 c) The rates of freedom from more than moderate aortic stenosis at 5 and 10 years in bio-Bentall group were 100% and 85.7%, respectively.

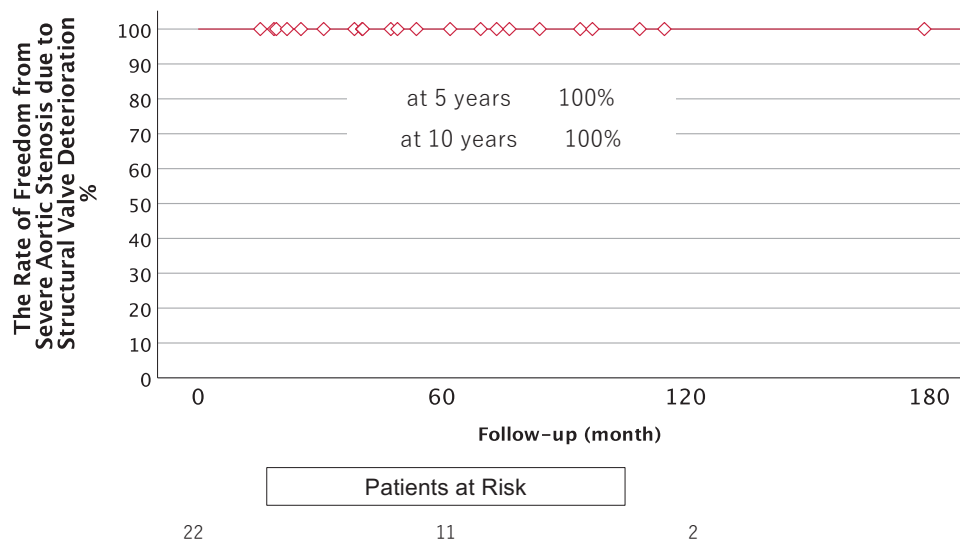


Fig. 3. The results of the Kaplan-Meier analysis regarding freedom from severe aortic stenosis due to structural valve deterioration in the bio-Bentall group. The rate of freedom from severe aortic stenosis due to SVD was 100% at both 5 years and 10 years.

( $n = 3,385$ , 27%). Minakata *et al.* reported the long-term outcome of Carpentier-Edwards pericardial valves in the aortic position among Japanese patients<sup>18</sup>. In a total 591 patients who underwent aortic valve replacement, the 21-mm valve was most frequently used ( $n = 207$ , 38.3%), followed by the 23-mm valve ( $n = 154$ , 28.5%). In our study, a 25-mm Carpentier-Edwards bioprosthesis was more frequently used (10 cases, 38%), followed by the 23-mm valve (6 cases, 23%). The mean body surface area of our patients was  $1.66 \pm 0.19$  m<sup>2</sup>, which is around average for Japanese patients. Regarding the required effective orifice area, we could use relatively larger bioprostheses than in the isolated aortic valve replacement. The flanged technique was reported by Yakut *et al.*<sup>11</sup> in 2001 as a new modification of the modified Bentall procedure. They described that this technique enables the aortic annulus to maintain its flexibility and elasticity, and facilitates the annular dilatation technique if needed. We began using the flanged technique to secure hemostasis at the proximal anastomosis. In addition, this technique contributes to enabling the use of a larger prosthesis than required. Tabata *et al.* also reported that their case series had undertaken a similar technique using a bioprosthesis and a Valsalva graft<sup>19</sup>. They described that this technique allows the surgeon to place a valve larger than the annulus, which especially helps patients with a small aortic annulus.

Chirichilli *et al.* reported their experience with the Bentall procedure using the Perimount biopros-

thesis and the Valsalva graft<sup>20</sup>. In a total of 309 cases, a 25-mm valve was most frequently used (149 cases, 48%), followed by a 23-mm valve (101 cases, 33%). These results were similar to those of our study. The use of large-sized bioprostheses may have contributed to the good long-term outcomes.

During our echocardiographic follow-up, the severity of aortic stenosis was of very low grade in all cases except two. One of the patients (a 21-year-old woman, operated on for annulo-aortic ectasia using a Carpentier-Edwards perimount 25 mm and a straight Dacron graft) had moderate aortic stenosis 15 years after the initial operation.

In addition, the Valsalva graft may play a role in improving valve durability and decreasing valve-related complications. Chirichilli *et al.* found that the Valsalva graft with the presence of pseudosinuses appears to play a beneficial role in regulating aortic root blood flow and may potentially decrease the risk of coronary button complication. Furthermore, the presence of vortices tends to wash the transitional area between the prosthetic valve and the Dacron conduit, potentially decreasing the incidence of thromboembolism<sup>20</sup>. In our study, the Valsalva conduit was used in 19 patients (73%). We expect further improvement in long-term outcomes by means of the Valsalva graft. From the results of this study, at present, the bio-Bentall procedure is the first choice in our strategy for the patients over age 65 with aortic root pathologies.

After the mechanical Bentall procedure, throm-

boembolic complications and bleeding events can occur. Among our patients, there were two cases of cerebral hemorrhage and one of cerebral embolism. Although the mechanical valve was selected due to its long-term durability and for avoidance of reoperation, maintaining a quality of life is also important, especially in young patients who have long life-expectancy. Bouhout *et al.* showed that the survival of patients after mechanical AVR was inferior to that of the general population who were age- and sex-matched<sup>21)</sup>. They concluded that AVR with a mechanical valve is the standard therapy for young patients; however, the outcomes were suboptimal. Our study suggests that life-long anticoagulation therapy in young patients should be avoided if possible. In this regard, valve-sparing aortic root repair (VSARR)<sup>22)</sup> and the Ross procedure<sup>23,24)</sup> have great advantages.

There are several limitations in our study. First, this study was a retrospective single-center study, and the sample size and the number of events were very small. Second, we could not have a comparison with propensity matching to clarify the difference between the bio-Bentall group and the mechanical Bentall group in terms of early and late outcomes. Third, we used several types of bio- and mechanical prostheses and were not able to identify differences among any prosthetic varieties. Finally, we could not make a comparison between the small and large bioprostheses in terms of their long-term durability.

### Conclusion

This study showed the excellent early and long-term outcomes of bio- and mechanical Bentall procedures with the flanged technique for patients with aortic root pathologies. Based on the rate of freedom from MAVREs in the current study, the bio-Bentall procedure may be the first-choice treatment, especially for patients over 65 years old.

### Compliance with ethical standards

All authors declare that they have no conflicts of interest pertaining to this investigation.

### References

1. Bentall H, De Bono A. A technique for complete replacement of the ascending aorta. *Thorax*, **23** : 338-339, 1968.
2. Mookhoek A, Korteland NM, Arabkhani B, *et al.* Bentall procedure : a systematic review and meta-analysis. *Ann Thorac Surg*, **101** : 1684-1689, 2016.
3. Castrovinci S, Tian DH, Murana G, *et al.* Aortic root replacement with biological valved conduits. *Ann Thorac Surg*, **100** : 337-353, 2015.
4. Urbanski PP, Heinz N, Zhan X, *et al.* Modified bio-Bentall procedure : 10-year experience. *Eur J Cardiothorac Surg*, **37** : 1317-1321, 2010.
5. Di Marco L, Pacini D, Pantaleo A, *et al.* Composite valve graft implantation for the treatment of aortic valve and root disease : Results in 1045 patients. *J Thorac Cardiovasc Surg*, **152** : 1041-1048.e1, 2016.
6. Lechiancole A, Celiento M, Isola M, *et al.* Modified Bentall procedure : mechanical vs biological valved conduits in patients older than 65 years. *Int J Cardiol*, **296** : 38-42, 2019.
7. Stefanelli G, Pirro F, Macchione A, *et al.* Long-term follow-up after Bentall operation using a stentless Shelhigh NR-2000 bio-conduit. *J Card Surg*, **35** : 988-995, 2020.
8. Katselis C, Samanidis G, Papatotiriou A, *et al.* Long-term results after modified Bentall operation in 200 patients. *J Heart Valve Dis*, **26** : 639-645, 2017.
9. Celiento M, Ravenni G, Margaryan R, *et al.* The modified Bentall procedure : a single-institution experience in 249 patients with a maximum follow up 21.5 years. *J Heart Valve Dis*, **25** : 448-455, 2016.
10. Dhurandhar V, Parikh R, Saxena A, *et al.* The aortic root replacement procedure : 12-year experience from the Australian and New Zealand society of cardiac and thoracic surgeons database. *Heart Lung Circ*, **25** : 1245-1251, 2016.
11. Yakut C. A new modified Bentall procedure : the flanged technique. *Ann Thorac Surg*, **71** : 2050-2052, 2001.
12. Akins CW, Miller DC, Turina MI, *et al.* Guidelines for reporting mortality and morbidity after cardiac valve interventions. *Ann Thorac Surg*, **85** : 1490-1495, 2008.
13. Baumgartner H, Falk V, Bax JJ, *et al.* 2017 ESC/EACTS guidelines for the management of valvular heart disease. *Eur Heart J*, **38** : 2739-2791, 2017.
14. Baumgartner H Chair, Hung J Co-Chair, Bermejo J, *et al.* Recommendations on the echocardiographic assessment of aortic valve stenosis : a focused update from the European association of cardiovascular imaging and the American society of echocardiography. *Eur Heart J Cardiovasc Imaging*, **18** : 254-275, 2017.
15. Bourguignon T, Bouquiaux-Stablo AL, Candolfi P, *et al.* Very long-term outcomes of the Carpentieri



- er-Edwards Perimount valve in aortic position. *Ann Thorac Surg*, **99** : 831-837, 2015.
16. Issa IF, Poulsen SH, Waziri F, *et al.* Structural valve deterioration in the Mitroflow biological heart valve prosthesis. *Eur J Cardiothorac Surg*, **53** : 136-142, 2018.
  17. Johnston DR, Soltesz EG, Vakil N, *et al.* Long-term durability of bioprosthetic aortic valves : implications from 12,569 implants. *Ann Thorac Surg*, **99** : 1239-1247, 2015.
  18. Minakata K, Tanaka S, Okawa Y, *et al.* Long-term outcome of the Carpentier-Edwards pericardial valve in the aortic position in Japanese patients. *Circ J*, **78** : 882-889, 2014.
  19. Tabata M, Takayama H, Bowdish ME, *et al.* Modified Bentall operation with bioprosthetic valved conduit : Columbia University experience. *Ann Thorac Surg*, **87** : 1969-1970, 2009.
  20. Chirichilli I, Irace FG, D'Aleo S, *et al.* Long-term follow-up of Bentall procedure using the perimount bioprosthesis and Valsalva graft. *Interact Cardiovasc Thorac Surg*, **30** : 679-684, 2020. doi : 10.1093/icvts/ivaa007.
  21. Bouhout I, Stevens LM, Mazine A, *et al.* Long-term outcomes after elective isolated mechanical aortic valve replacement in young adults. *J Thorac Cardiovasc Surg*, **148** : 1341-1346, 2014.
  22. David TE. Aortic valve sparing in different aortic valve and aortic root conditions. *J Am Coll Cardiol*, **68** : 654-664, 2016.
  23. Mazine A, El-Hamamsy I, Verma S, *et al.* Ross procedure in adults for cardiologists and cardiac surgeons. *J Am Coll Cardiol*, **72** : 2761-2777, 2018.
  24. Sievers HH, Stierle U, Charitos EI, *et al.* A multi-centre evaluation of the autograft procedure for young patients undergoing aortic valve replacement : update on the German Ross Registry. *Eur J Cardiothorac Surg*, **49** : 212-218, 2016.