

Hypo-Attenuated Leaflet Thickening and Reduced Leaflet Motion in Sutureless Bioprosthetic Aortic Valves

Magnus Dalén, MD, PhD; Ulrik Sartipy, MD, PhD; Kerstin Cederlund, MD, PhD; Anders Franco-Cereceda, MD, PhD; Anders Svensson, PhD; Raquel Themudo, MD, PhD; Peter Svenarud, MD, PhD; Elin Bacsovcics Brolin, MD, PhD

Background—The prevalence of hypo-attenuated leaflet thickening (HALT) and reduced leaflet motion (RLM) is unknown in surgically implanted bioprostheses because systematic investigation of HALT and/or RLM is limited to a few catheter-based valves. The aim of this study was to investigate the prevalence of HALT and RLM by cardiac computed tomography in patients who underwent surgical aortic valve replacement and received a Perceval sutureless aortic valve bioprosthesis.

Methods and Results—This was a single-center prospective observational study that included 47 patients (83.5% of the total number of implantations) who underwent surgical aortic valve replacement with implantation of the Perceval sutureless bioprosthesis (LivaNova PLC, London, UK) at Karolinska University Hospital in Stockholm, Sweden from 2012 to 2016 and were studied by cardiac computed tomography. Cardiac computed tomography was performed at a median of 491 days (range 36–1247 days) postoperatively. HALT was found in 18 (38%) patients and RLM in 13 (28%) patients. All patients with RLM had HALT. Among patients with HALT, 5 out of 18 patients (28%) were treated with anticoagulation (warfarin or any novel oral anticoagulant) at the time of cardiac computed tomography. Among patients with RLM, 3 out of 13 patients (23%) were treated with anticoagulation.

Conclusions—HALT and RLM were prevalent in the surgically implanted Perceval sutureless aortic valve bioprosthesis. Both HALT and RLM were found in patients with ongoing anticoagulation treatment. Whether these findings are associated with adverse events needs further study.

Clinical Trial Registration—URL: <http://www.clinicaltrials.gov>. Unique identifier: NCT02671474. (*J Am Heart Assoc.* 2017;6:e005251. DOI: 10.1161/JAHA.116.005251.)

Key Words: aortic valve surgery • bioprosthesis • cardiac computed tomography • leaflet motion • leaflet thickening

Recent reports have shown a high prevalence of hypo-attenuated leaflet thickening (HALT) with or without reduced leaflet motion (RLM) detected with cardiac computed

tomography (CT) of transcatheter aortic valve implantation (TAVI) prostheses.^{1–4} The prevalence of RLM and HALT has been studied in a small number of different types of surgically implanted bioprostheses.⁴ Additional data for prosthetic heart valves have been requested by the US Food and Drug Administration (FDA).⁵ Patients are frequently asymptomatic and the abnormalities have been detected incidentally. Leaflet thrombosis has been speculated to be the underlying cause of HALT and RLM because anticoagulation therapy with warfarin has been associated with a decreased prevalence of RLM. Furthermore, restoration of cusp thickness and leaflet motion has been noted in patients receiving warfarin. Although the clinical consequences of HALT and RLM are still uncertain, left-sided prosthetic valve thrombosis is a risk factor for stroke,^{6,7} and prosthetic valve thrombosis is associated with prosthesis dysfunction and reduced prosthesis durability.⁸

During recent years, sutureless surgical aortic bioprostheses have gained popularity as an alternative to conventional sutured stented bioprostheses for patients undergoing aortic valve replacement (AVR). Sutureless

From the Departments of Cardiothoracic Surgery and Anesthesiology (M.D., U.S., A.F.-C., P.S.) and Radiology Huddinge (K.C., A.S., R.T., E.B.B.), Karolinska University Hospital, Stockholm, Sweden; Departments of Molecular Medicine and Surgery (M.D., U.S., A.F.-C., P.S.), Clinical Science, Intervention and Technology (K.C., A.S., E.B.B.), and Clinical Physiology (R.T.), Karolinska Institutet, Stockholm, Sweden.

Accompanying Data S1, Table S1, Figures S1 through S4, and Videos S1 through S7 are available at <http://jaha.ahajournals.org/content/6/8/e005251.full#sec-34>

Correspondence to: Magnus Dalén, MD, PhD, Department of Cardiothoracic Surgery and Anesthesiology, Karolinska University Hospital, Stockholm SE-171 76, Sweden. E-mail: magnus.dalen@sl.se

Received December 7, 2016; accepted April 27, 2017.

© 2017 The Authors. Published on behalf of the American Heart Association, Inc., by Wiley. This is an open access article under the terms of the Creative Commons Attribution-NonCommercial-NoDerivs License, which permits use and distribution in any medium, provided the original work is properly cited, the use is non-commercial and no modifications or adaptations are made.

Clinical Perspective

What Is New?

- Hypo-attenuated leaflet motion and reduced leaflet motion were prevalent in the surgically implanted Perceval sutureless aortic valve bioprosthesis.
- Both hypo-attenuated leaflet thickening and reduced leaflet motion were found in patients with ongoing anticoagulation treatment.

What Are the Clinical Implications?

- Whether hypo-attenuated leaflet thickening and reduced leaflet motion in the Perceval sutureless aortic valve bioprosthesis are associated with adverse events is currently unknown and warrants further investigation.
- The findings cannot be regarded as recommendations regarding anticoagulation therapy following Perceval sutureless implantation since the study was not designed to investigate this.

surgical aortic bioprostheses were introduced to facilitate implantation and shorten the procedure to reduce adverse effects associated with aortic cross-clamping and cardiopulmonary bypass. The Perceval (LivaNova PLC, London, UK) valve is a sutureless aortic bioprosthesis made of bovine pericardium that received CE (Conformité Européenne) mark approval in 2011 and US FDA approval in 2016. It is currently the most frequently used sutureless prosthetic valve and has been implanted in more than 15 000 patients in more than 310 hospitals worldwide.⁹ The Perceval bioprosthesis shares structural similarities with current TAVI prosthetic valves, with a nickel-titanium alloy stent supporting the valve and anchoring it to the aortic annulus. The prevalence of HALT and RLM in the Perceval bioprosthesis is unknown.

The aim of this study was to investigate the prevalence of HALT and RLM by cardiac CT in patients who underwent surgical AVR and received a Perceval sutureless aortic valve bioprosthesis. We also sought to examine the association between HALT and RLM.

Methods

Study Design

This was a single-center prospective observational study approved by the regional Human Research Ethics Committee, Stockholm, Sweden. Informed consent was obtained from patients meeting the inclusion criteria. Study design and data collection were conducted by the study institution with no sponsor contribution.

Study Population

All patients who had undergone surgical AVR with implantation of the Perceval sutureless bioprosthesis at Karolinska University Hospital in Stockholm, Sweden (October 2012 to February 2016) were eligible. The criterion to implant the Perceval sutureless bioprosthesis was aortic stenosis with indication for primary isolated nonemergent AVR. Implantation was considered feasible if the aortic annulus size was between 19 and 27 mm and the ratio between the diameter of the sinotubular junction and the diameter of the aortic annulus did not exceed 1.3. A type 0 bicuspid aortic valve was a contraindication for Perceval sutureless bioprosthesis implantation. Exclusion criteria were death, severely impaired renal function (glomerular filtration rate $<30 \text{ mL}\cdot\text{min}^{-1}\cdot 1.73 \text{ m}^{-2}$), unwillingness to undergo CT examination, or inability to participate in the examination for logistical reasons.

Clinical Outcomes

Clinical data were obtained by chart review. We investigated the associations between HALT and RLM and baseline, procedural, and follow-up data. At the time of the cardiac CT examination, we collected data on antithrombotic treatment to assess its effect on the prevalence of HALT and RLM. Warfarin treatment was classified as being within therapeutic range if the international normalized ratio had been >2 within 7 days of CT. We also collected data on symptoms of heart failure according to the New York Heart Association functional classification and change in New York Heart Association class at cardiac CT examination.

Sutureless Surgical Aortic Valve Replacement

Information about the Perceval bioprosthesis design (Figure S1) is presented in the Methods section of Data S1. Patients underwent sutureless bioprosthesis AVR via either full sternotomy or partial upper hemisternotomy. The surgeon determined eligibility for implantation of a sutureless bioprosthesis and the preferred incision. Cardiopulmonary bypass was established with central arterial and central or peripheral percutaneous venous cannulation. Implantation was performed as previously described¹⁰ and details are presented in the Methods section of Data S1.

Peri- and Postprocedural Antithrombotic Regimen

Before initiation of cardiopulmonary bypass, 400 IU heparin/kg body weight was administered. If necessary, additional heparin was administered to maintain an activated clotting time of more than 480 s during cardiopulmonary bypass.

After weaning from cardiopulmonary bypass, protamine was administered at a ratio of 1.0 to 1.3 mg/100 IU of the initial dose of heparin. All patients received tranexamic acid perioperatively (10–20 mg·kg⁻¹ before surgery followed by an infusion of 5 to 10 mg·kg⁻¹·h⁻¹ during the operation).

According to the standard antithrombotic protocol for aortic bioprostheses at our center, postoperative antithrombotic treatment consisted of low-molecular-weight heparin until full mobilization and lifelong treatment with acetylsalicylic acid 75 mg once daily. Patients without a preoperative indication for oral anticoagulation did not receive oral anticoagulants postoperatively. In patients perioperatively receiving long-term anticoagulation treatment, warfarin or novel oral anticoagulant (dabigatran, apixaban, or rivaroxaban) treatment was paused 3 days before the operation without bridging with low-molecular-weight heparin. In these patients, anticoagulation therapy was readministered at day 1 postoperatively. These patients were not treated with acetylsalicylic acid.

Cardiac Computed Tomography Data Acquisition

Details regarding cardiac CT data acquisition are presented in the Methods section of Data S1. All patients were scanned using a dual-source 2×64-row multidetector computed tomograph (Siemens Somatom Definition Flash; Siemens Healthcare, Forchheim, Germany) with retrospective ECG gating and individualized contrast medium administration.

Cardiac Computed Tomography Analysis

Details regarding cardiac CT analysis are presented in Data S1. Cardiac CT examinations were analyzed independently by 2 experienced readers (level 2 according to American College of Cardiology Foundation/American Heart Association levels of CT reading competence¹¹). Joint readings involving a third experienced reader were subsequently performed to reach a consensus.

For assessment of leaflet anatomy and motion, multiplanar reformatted reconstructions (MPR) were used as still images from selected phases of the cardiac cycle, as well as dynamic images of the entire cardiac cycle. An examination was considered nondiagnostic if artifacts prevented reliable assessment of 1 or more valve leaflet (for example, because of motion or image noise).

HALT was defined according to the definition previously proposed¹: evidence of 1 or more leaflet with hypo-attenuated thickening, with or without rigidity, identifiable in at least 2 different MPR projections. To evaluate leaflet motion, time-resolved 1-mm MPR were used, providing high-quality dynamic images of the prosthetic valve throughout the cardiac cycle, in the plane of the leaflets and in a

perpendicular plane adjusted to the leaflet being assessed. Leaflet motion was considered normal or reduced based on visual assessment. Leaflet motion was considered reduced when the entire cusp displayed reduced motion. The opening area of the prosthetic valve was measured using planimetry in MPR.¹²

During subsequent separate reading sessions, the 2 readers performed additional analyses of leaflet motion, with access only to 3-dimensional (3D) volume-rendered (VR) images of the aortic-valve bioprosthesis, blinded to findings of previous MPR analyses.

Statistical Methods

Variables were described using frequencies and percentages for categorical variables, and means and SD or medians and interquartile range (quartile Q1, Q3) for continuous variables. Continuous variables were compared using the *t* test or analysis of variance, and categorical or binary variables were compared using Pearson's χ^2 test. *P* values were not corrected for multiple comparisons. A 2-sided *P* value of <0.05 was considered to indicate statistical significance. Data management and statistical analyses were performed using Stata 13.1 (Stata Corp, College Station, TX).

Results

Study Population

Between October 2012 and February 2016, a total of 58 patients received a Perceval sutureless bioprosthesis at our center. All procedures were primary isolated AVR because of aortic stenosis. One patient had a subarachnoid hemorrhage and died 127 days postoperatively, before initiation of the study. Fifty-seven patients were eligible for participation in the study. Ten patients were not included in the study (1 with impaired renal function, 7 unwilling to participate in the study, 2 who were indisposed for logistical reasons). Cardiac CT was performed between February and March 2016 in 47 patients (83.5% of the patients who were eligible for participation). All cardiac CT examinations were diagnostic regarding the evaluation of HALT. One examination was nondiagnostic regarding the assessment of valve leaflet motion because of motion artifacts as the result of irregular heart rhythm. Patient characteristics at the time of surgery are shown in Table 1. Cardiac CT was performed at a median of 491 days (range 36–1247 days, Q1 287, Q3 933 days) postoperatively. Patient age, sex, and surgical risk score assessed with EuroSCORE (European System for Cardiac Operative Risk Evaluation Score) II did not differ significantly between excluded patients and patients who underwent cardiac CT examination (age: 73.3 years versus 74.5 years, *P*=0.51;

Table 1. Patient and Procedural Characteristics

	Total Population (n=47)	No HALT (n=29)	HALT (n=18)	P Value	Normal Leaflet Motion (n=33)	RLM (n=13)	P Value
Age, y, mean (SD)	74.5 (5.4)	75.6 (3.9)	72.8 (7.1)	0.082	76.5 (4.3)	69.8 (5.4)	<0.001
Female sex	36 (77%)	22 (76%)	14 (78%)	0.88	26 (79%)	9 (69%)	0.49
Body mass index, kg/m ² , mean (SD)	27.70 (4.96)	27.5 (3.9)	28.1 (6.5)	0.69	27.1 (3.9)	29.4 (7.0)	0.16
Ministernotomy	40 (85%)	23 (79%)	17 (94%)	0.35	26 (79%)	13 (100%)	0.20
Prosthesis size				0.41			0.40
Small	4 (9%)	4 (14%)	0 (0%)		4 (12%)	0 (0%)	
Medium	18 (38%)	11 (38%)	7 (39%)		14 (42%)	4 (31%)	
Large	20 (43%)	11 (38%)	9 (50%)		12 (36%)	7 (54%)	
Extra large	5 (11%)	3 (10%)	2 (11%)		3 (9%)	2 (15%)	
Left ventricular ejection fraction				0.85			0.84
>50%	44 (94%)	27 (93%)	17 (94%)		31 (94%)	12 (92%)	
30% to 50%	3 (6%)	2 (7%)	1 (6%)		2 (6%)	1 (8%)	
<30%	0	0	0		0	0	
Estimated glomerular filtration rate				0.56			0.27
>60 mL·min ⁻¹ ·1.73 m ⁻²	32 (68%)	21 (72%)	11 (61%)		23 (70%)	8 (62%)	
45 to 60 mL·min ⁻¹ ·1.73 m ⁻²	10 (21%)	6 (21%)	4 (22%)		8 (24%)	2 (15%)	
30 to 45 mL·min ⁻¹ ·1.73 m ⁻²	4 (9%)	2 (7%)	2 (11%)		2 (6%)	2 (15%)	
15 to 30 mL·min ⁻¹ ·1.73 m ⁻²	1 (2%)	0 (0%)	1 (6%)		0 (0%)	1 (8%)	
Diabetes mellitus	10 (21%)	4 (14%)	6 (33%)	0.11	5 (15%)	5 (38%)	0.084
Insulin-dependent diabetes mellitus	3 (6%)	1 (3%)	2 (11%)	0.30	1 (3%)	2 (15%)	0.13
Hypertension	34 (72%)	21 (72%)	13 (72%)	0.99	25 (76%)	9 (69%)	0.65
Stroke	0	0	0	...	0	0	...
Transient ischemic attack	6 (13%)	4 (14%)	2 (11%)	0.79	4 (12%)	2 (15%)	0.77
Chronic lung disease	4 (9%)	4 (14%)	0 (0%)	0.099	3 (9%)	0 (0%)	0.26
Hemodialysis	0	0	0	...	0	0	...
Neurologic dysfunction	0	0	0	...	0	0	...
Critical preoperative state	1 (2%)	1 (3%)	0 (0%)	0.43	1 (3%)	0 (0%)	0.53
Active cancer	0	0	0	...	0	0	...
History of cancer	5 (11%)	4 (14%)	1 (6%)	0.37	5 (15%)	0 (0%)	0.14
Peripheral artery disease	0	0	0	...	0	0	...
Coronary artery disease	0	0	0	...	0	0	...
Previous myocardial infarction	1 (2%)	0 (0%)	1 (6%)	0.20	0 (0%)	1 (8%)	0.11
Atrial fibrillation	6 (13%)	5 (17%)	1 (6%)	0.24	5 (15%)	0 (0%)	0.14
New York Heart Association class				0.42			0.91

Continued

Table 1. Continued

	Total Population (n=47)	No HALT (n=29)	HALT (n=18)	P Value	Normal Leaflet Motion (n=33)	RLM (n=13)	P Value
I	3 (6%)	2 (7%)	1 (6%)		2 (6%)	1 (8%)	
II	23 (49%)	12 (41%)	11 (61%)		16 (48%)	7 (54%)	
III	21 (45%)	15 (52%)	6 (33%)		15 (45%)	5 (38%)	
IV	0	0	0		0	0	
Previous cardiac surgery	1 (2%)	1 (3%)	0 (0%)	0.43	1 (3%)	0 (0%)	0.53
Pacemaker	0	0	0	...	0	0	...
EuroSCORE II, mean (SD)	2.01 (1.07)	2.08 (1.17)	1.91 (0.92)	0.62	2.09 (1.13)	1.82 (0.97)	0.45
Days between operation and CT, median (Q1, Q3)	491 (287, 933)	547 (287, 989)	420 (289, 50)	0.65	583 (364, 1045)	331 (272, 492)	0.095

Baseline and procedural characteristics in relation to HALT and leaflet motion in 47 patients who underwent cardiac CT at different time points after surgical aortic valve replacement with the Perceval sutureless aortic valve bioprosthesis. Data are n (%) unless otherwise noted. CT indicates computed tomography; EuroSCORE II, European System for Cardiac Operative Risk Evaluation Score II; HALT, hypo-attenuated leaflet thickening; Q, quartile; RLM, reduced leaflet motion.

female sex: 82% versus 77%, $P=0.71$; EuroSCORE II: 2.70 versus 1.68, $P=0.20$).

HALT and RLM

Validation of CT evaluation methods is presented in the Results section of Data S1. HALT was found in 18 (38%) patients, of which 10 (56%) had 1 affected leaflet, 6 (33%) had 2 affected leaflets, and 2 (11%) had HALT of all 3 leaflets. Ten right aortic valve cusps, 8 left cusps, and 10 noncoronary cusps had HALT. The mean HALT leaflet thickening was 3 mm (range 1–5 mm; Figure S2). At discharge after AVR, transaortic pressure gradients were comparable between patients with and without HALT (mean transaortic pressure gradient 15.2 ± 5.3 mm Hg versus 15.5 ± 5.6 mm Hg, $P=0.84$). RLM was seen in 13 of 18 (72%) patients with HALT. Thirty-one patients (66%) had evidence of hypo-attenuated lesions different from leaflet thickening (a majority located below the insertion of the prosthetic valve leaflets).

RLM was found in 13 (28%) patients, of which 11 patients had 1 leaflet with reduced motion and 2 patients had 2 leaflets with reduced motion. RLM was found in 3 right aortic valve cusps, 5 left cusps, and 7 noncoronary cusps (Figures S3 and S4). None of the patients with RLM showed clinical symptoms of aortic stenosis. At discharge after AVR, transaortic pressure gradients were comparable between patients with normal and RLM (mean transaortic pressure gradient 14.5 ± 4.1 mm Hg versus 16.2 ± 6.9 mm Hg, $P=0.32$). All patients with RLM had evidence of HALT of at least 1 leaflet and there was a significant association between RLM and the presence of HALT ($P<0.001$). Dynamic images are presented in Videos S1 through S7.

Patient and procedural characteristics are presented in Table 1 but the study was underpowered to detect possible associations between these characteristics and the risk of HALT and RLM. Patients with RLM were younger than patients with normal leaflet motion (69.8 ± 5.4 years versus 76.5 ± 4.3 years, $P<0.001$). We investigated a possible relation between time interval from operation to CT, and HALT/RLM but found none. However, the study might have been underpowered to detect such a difference. Implanted prosthesis size and prosthetic valve opening area in relation to HALT and leaflet motion are presented in Table S1.

Antithrombotic Treatment

All patients treated with warfarin or a novel oral anticoagulant had been taking the medication for at least 5 months without interruption before CT examination. Both HALT and RLM were found in patients treated with acetylsalicylic acid, warfarin, or a novel oral anticoagulant (Table 2, Figure). All patients with HALT or RLM and oral anticoagulant treatment at the time of CT had ongoing anticoagulant treatment at the time of operation or started it within 1 month after the operation. There was no time effect in relation to type of antithrombotic therapy (novel oral anticoagulant or warfarin) used during the study period.

Clinical Outcomes

Clinical outcomes are shown in Table 3. Three (6%) patients had a perioperative stroke, and 1 (2%) transient ischemic attack (at 406 days postoperatively) occurred during follow-up. Two of these 4 patients with a cerebrovascular

Table 2. Antithrombotic Treatment at the Time of CT

	Total Population (n=47)	No HALT (n=29)	HALT (n=18)	P Value	Normal Leaflet Motion (n=33)	RLM (n=13)	P Value
Anticoagulation treatment at the time of computed tomography							
Warfarin	8/47 (17%)	4/29 (14%)	4/18 (22%)	0.45	6/33 (18%)	2/13 (15%)	0.82
Any novel oral anticoagulant	9/47 (19%)	8/29 (28%)	1/18 (6%)	0.062	7/33 (21%)	1/13 (8%)	0.28
Warfarin or any novel oral anticoagulant	17/47 (36%)	12/29 (41%)	5/18 (28%)	0.35	13/33 (39%)	3/13 (23%)	0.30
Rivaroxaban	2/47 (4%)	2/29 (7%)	0	0.25	2/33 (6%)	0	0.36
Apixaban	7/47 (15%)	6/29 (21%)	1/18 (6%)	0.16	5/33 (15%)	1/13 (8%)	0.50
Dabigatran	0	0	0	...	0	0	...
Platelet inhibition treatment at the time of computed tomography							
Dual antiplatelet therapy	0	0	0	...	0	0	...
Acetylsalicylic acid	28/47 (60%)	15/29 (52%)	13/18 (72%)	0.16	19/33 (58%)	9/13 (69%)	0.47

Anticoagulant and platelet inhibition treatment at the time of cardiac computed tomography in relation to HALT and leaflet motion in 47 patients who underwent computed tomography at different time points after surgical aortic valve replacement with the Perceval sutureless aortic valve bioprosthesis. Data are n (%) unless otherwise noted. HALT indicates hypo-attenuated leaflet thickening; RLM, reduced leaflet motion.

thromboembolic event had HALT and RLM and 2 had neither HALT nor RLM at CT examination. There were no other significant differences in clinical outcomes between the groups but the study was not designed to detect such differences.

Discussion

In this study, cardiac CT revealed a high prevalence of HALT and RLM among patients with a surgically implanted Perceval sutureless aortic valve bioprosthesis. HALT was found in all patients with RLM. Both HALT and RLM were found in patients with ongoing anticoagulation treatment.

Previous Studies of HALT and RLM

Three recently published series have reported on HALT and/or RLM detected with CT in patients who received TAVI prostheses.^{1,3,4} In 1 of these reports, a small number of different types of surgically implanted bioprostheses was also studied.⁴ None of these studies investigated both HALT and RLM systematically. In a series of 156 consecutive patients undergoing CT after a median of 5 days after implantation of the SAPIEN 3 (Edwards Lifesciences, Irvine, CA) transcatheter valve, HALT was found in 10.3% with RLM in 50% of these cases.¹ HALT was clinically insignificant in all cases and reversible by anticoagulation treatment with phenprocoumon for 3 months. In a report of 140 patients who underwent CT 1 to 3 months after implantation of the SAPIEN XT (Edwards Lifesciences) transcatheter valve, HALT was reported in 5 (4%) patients, of whom 4 were asymptomatic.³ None of these patients received anticoagulation treatment at the time of the

CT scan. HALT was reversible by anticoagulation treatment with warfarin for 3 months in all 5 patients.

The Assessment of Transcatheter and Surgical Aortic Bioprosthetic Valve Thrombosis and Its Treatment with Anticoagulation (RESOLVE) registry and Subclinical Aortic Valve Bioprosthesis Thrombosis Assessed with Four-Dimensional Computed Tomography (SAVORY) registry reported the prevalence of subclinical leaflet thrombosis in bioprosthetic aortic valves on the basis of 890 patients (84% TAVI patients, 16% surgical AVR patients) who had interpretable CT imaging done after either TAVI or surgical AVR. Reduced leaflet motion was diagnosed in 3.6% of the patients with surgical valves versus 13% of patients with transcatheter valves. Six different types of surgical bioprostheses were studied and the prevalence of RLM ranged 0% to 11% between these prosthesis types. Prevalence of RLM ranged 0% to 30% in studied transcatheter valve types. HALT was found in all patients with RLM. Patients with reduced leaflet motion had a small increase in aortic valve gradients measured with transthoracic echocardiography at CT examination. The prevalence of RLM was lower among patients receiving anticoagulation therapy compared with patients receiving dual antiplatelet therapy at the time of cardiac CT (4% versus 15%). Reduced leaflet motion resolved in all 36 patients who received anticoagulation for 3 months but persisted in 20 of 22 patients not receiving anticoagulation. Reduced leaflet motion was associated with increased rates of transient ischemic attacks (4.18 versus 0.60 per 100 person-years).

In summary, these 3 previous reports indicate that HALT and RLM can be detected on cardiac CT and could be associated with increased rates of transient ischemic attacks and a small increase in valve gradients. HALT and RLM have

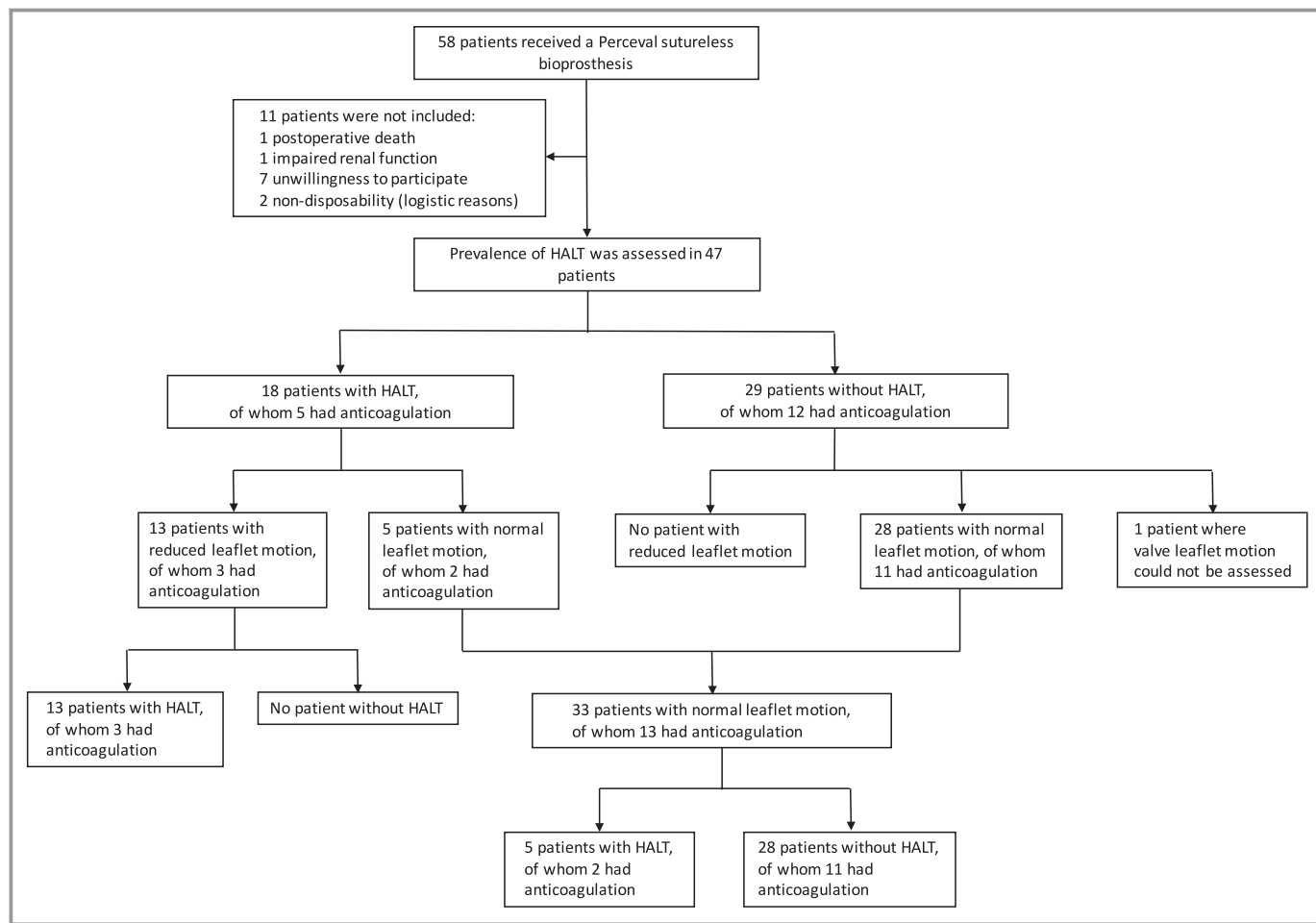


Figure. Study flow chart and prevalence of hypo-attenuated leaflet thickening and reduced leaflet motion in relation to anticoagulation treatment (warfarin or any novel oral anticoagulant). HALT indicates hypo-attenuated leaflet thickening.

been demonstrated in practically all studied prosthesis types, including surgically implanted bioprostheses. Anticoagulation treatment at the time of CT has been associated with a decreased incidence of RLM and both HALT and RLM resolved with anticoagulation treatment for 3 to 6 months.^{1,3,4} These findings have led to the interpretation that HALT and RLM could be either early markers of leaflet thrombosis or equivalent to subclinical leaflet thrombosis.

Prevalence of HALT and RLM

The reported prevalence of HALT and RLM has varied considerably between published series. There are several differences between these series that might explain the variability, (eg, multiple prosthesis types, both transcatheter and surgical), the timing of cardiac CT after valve implantation, and different cardiac CT techniques.

The prevalence of HALT in the Perceval sutureless aortic bioprosthesis was high (38%) compared with previous TAVI studies (4–10%).^{1,3} This may in part be related to the different prosthetic designs and to the fact that CT acquisition was

generally performed late in our study, at a median of 491 days after Perceval implantation. Another explanation of the high prevalence of HALT in the present study may be the high diagnostic quality of the cardiac CT scans, with no nondiagnostic examinations, compared with 28% nondiagnostic scans in 1 previous study,³ together with the thorough evaluation by 2 experienced readers, assessing time-resolved MPR as well as VR images.

The prevalence of RLM found in this study was higher than that reported from the RESOLVE/SAVORY study. There are differences between the RESOLVE/SAVORY study and our study. First, the diagnosis of RLM differed between the two studies, since RESOLVE/SAVORY used only 3D VR to diagnose RLM, but in our study 3D VR was only used for comparative studies and the reported prevalence of RLM was based on MPR results. Evaluation of RLM based on 3D VR images alone correlated moderately with findings based on MPR, but interobserver variability was greater for 3D VR. No cases of RLM were missed when evaluating VR images alone, but there were 3 false-positive cases as compared with MPR assessments. Based on these findings, it is unlikely that the use of

Table 3. Clinical Outcomes

	Total Population (n=47)	No HALT (n=29)	HALT (n=18)	P Value	Normal Leaflet Motion (n=33)	RLM (n=13)	P Value
Paravalvular leakage grade at discharge				0.25			0.36
None	45 (96%)	27 (93%)	18 (100%)		31 (94%)	13 (100%)	
Mild	2 (4%)	2 (7%)	0 (0%)		2 (6%)	0 (0%)	
Moderate	0	0	0		0	0	
Severe	0	0	0		0	0	
Reoperation because of paravalvular leakage	0	0	0	...	0	0	...
Device embolization perioperatively	0	0	0	...	0	0	...
Conversion to sternotomy	0	0	0	...	0	0	...
Transaortic pressure gradient at discharge							
Maximum, mm Hg, mean (SD)	28.9 (10.7)	27.3 (7.3)	31.7 (14.7)	0.20	28.2 (9.5)	31.3 (13.8)	0.40
Mean, mm Hg, mean (SD)	15.1 (5.3)	14.5 (4.1)	16.2 (6.9)	0.32	15.2 (5.3)	15.5 (5.6)	0.84
New-onset atrial fibrillation	22 (47%)	15 (52%)	7 (39%)	0.39	16 (48%)	6 (46%)	0.89
Atrial fibrillation before discharge	28 (60%)	20 (69%)	8 (44%)	0.096	21 (64%)	6 (46%)	0.28
Atrial fibrillation after discharge	13 (28%)	11 (38%)	2 (11%)	0.046	11 (33%)	1 (8%)	0.075
De novo pacemaker	6 (13%)	2 (7%)	4 (22%)	0.13	3 (9%)	3 (23%)	0.20
Stroke postoperatively excluding perioperatively	0	0	0	...	0	0	...
Stroke perioperatively	3 (6%)	1 (3%)	2 (11%)	0.30	1 (3%)	2 (15%)	0.13
Transient ischemic attack	1 (2%)	1 (3%)	0 (0%)	0.43	1 (3%)	0 (0%)	0.53

Clinical outcomes in relation to HALT and leaflet motion in 47 patients who underwent cardiac computed tomography at different time points after surgical aortic valve replacement with the Perceval sutureless aortic valve bioprosthesis. Data are n (%) unless otherwise noted. HALT indicates hypo-attenuated leaflet thickening; RLM, reduced leaflet motion.

different RLM diagnosis criteria used in RESOLVE/SAVORY and our study could explain the large difference in the prevalence of RLM in surgically implanted bioprostheses between the two studies. Secondly, baseline characteristics in the RESOLVE/SAVORY surgical cohort differed from characteristics of the patients included in our study. Patients in our study were more likely to be female (77% versus 36%) and were older (74.5 years versus 71.9 years). They also more frequently had a history of transient ischemic attacks (13% versus 2.2%) but less frequently of stroke (0% versus 6.6%) and atrial fibrillation (13% versus 22.6%). Anticoagulation at the time of discharge after the operation as well as at the time of CT was more common in our cohort compared with the RESOLVE/SAVORY surgical cohort. The differences in baseline characteristics might have contributed to the differences in prevalence of RLM in surgically implanted bioprostheses between the two studies. Finally, the time interval between operation and CT differed substantially between the studies. In our study, the median time from aortic valve replacement to CT was 491 days versus 163 days in RESOLVE/SAVORY surgical cohort. The association between time interval between operation and CT and the prevalence of RLM has not been thoroughly studied, and it is unclear whether this might have influenced the differences in RLM prevalence between the 2 studies.

The large difference in prevalence of RLM in surgically implanted bioprostheses in RESOLVE/SAVORY versus in surgically implanted sutureless bioprostheses in our study could either be because of different baseline characteristics or differences in time between operation and CT. However, it cannot be excluded that the prevalence of RLM is higher in the sutureless bioprosthetic valve studied compared with standard surgically implanted bioprostheses. The Perceval prosthesis has several features in common with transcatheter valves (eg, the stent design, which could hypothetically affect the tendency for RLM).

Anticoagulation Therapy

Both HALT and reduced leaflet motion were found in patients with ongoing anticoagulation treatment. In previous studies, because of CT characteristics and findings that resolved with anticoagulation treatment, thrombosis has been considered to be a likely cause of HALT and RLM.² The number of patients in the current study may be too small to detect differences in anticoagulation therapy. However, HALT and RLM were noted in patients receiving ongoing anticoagulation therapy, indicating that anticoagulation therapy is not a guarantee against these phenomena. This finding is

supported by findings of a recent larger series of bioprosthetic valves.^{4,13,14}

Although both HALT and RLM have been shown to resolve with anticoagulation therapy in previous studies, this treatment may not be generally recommended because anticoagulation generally carries a risk of major bleeding complications.¹⁵ In addition, there are sparse data regarding the association between HALT and RLM and adverse clinical events, and the risk–benefit ratio of anticoagulation treatment for HALT or RLM remains uncertain. Furthermore, it is not known for how long anticoagulation therapy should be continued or what happens when anticoagulation treatment is subsequently discontinued. Guidelines for the possible treatment of HALT and RLM are currently lacking. Current American Heart Association/American College of Cardiology and European Society of Cardiology guidelines state that anticoagulation treatment with a vitamin K antagonist may be considered for the first 3 months after bioprosthetic surgical AVR,^{16,17} but there is no strong evidence supporting this statement and many centers prescribe only low-dose acetylsalicylic acid after the procedure. Anticoagulation treatment recommendations after Perceval sutureless valve implantation follow the standard antithrombotic protocol for bioprosthetic valves at the implanting center.¹⁸ Our analyses cannot be regarded as recommendations regarding anticoagulation treatment after Perceval sutureless valve implantation because our findings regarding HALT and RLM are descriptive and their potential clinical implications are unknown.

Underlying Mechanism

As for other valve types, the underlying mechanism of HALT and RLM in Perceval sutureless bioprostheses is unknown. Leaflet thrombosis has been speculated to be the underlying cause because restoration of cusp thickness and leaflet motion has been noted in patients receiving warfarin. All patients with RLM in this study, as well as in a previous TAVI study,⁴ had evidence of HALT and it seems likely that the reduced leaflet motion is secondary to the thickening of the valve leaflets. It has been speculated that the leaflet material of transcatheter and surgical bioprostheses may to some degree be procoagulant.¹ The Perceval prosthesis has several features in common with transcatheter valves (eg, the stent design may cause blood trauma and thereby induce a hypercoagulable state).^{1,19} After insertion into the aortic annulus, the Perceval prosthesis inflow ring is dilated with a balloon catheter. However, the balloon should only be in contact with the inflow ring and not the prosthetic leaflets during inflation. Furthermore, HALT and RLM have been observed in both balloon-expandable and self-expandable transcatheter valves.^{1–3} Another theory relates to the fact that degenerated native valve material is not removed during

TAVI procedures, which may increase the risk for HALT and RLM because the remnant native valve may be a procoagulant.¹ However, in the current report, the prevalence of HALT and RLM was high despite excision of the native valve followed by complete decalcification. We found that patients with RLM were younger than patients with normal leaflet motion; however, previous data regarding the association between age and RLM are conflicting.⁴

Clinical Implications of HALT and RLM

The potential clinical consequences of HALT and RLM in bioprostheses in general and the Perceval sutureless valve in particular are uncertain, and only 1 previous report has shown an association between RLM and cerebrovascular events.⁴ The incidence of stroke after Perceval sutureless valve implantation has been reported to be low and comparable to the incidence after conventional stented surgical bioprosthetic implantation.^{20,21} Implantation of the Perceval sutureless valve has been associated with satisfactory hemodynamic performance without any overall increase in transvalvular gradients over time, and a low incidence of adverse events such as structural valve degeneration or clinically apparent valve thrombosis.^{20,21} However, maximum follow-up is currently limited to 5 years with very few patients followed for more than 2 years postoperatively, which prohibits definitive conclusions regarding clinical outcomes. The potential for increased risks of adverse events related to HALT and RLM warrants systematic investigation.⁵

Limitations and Strengths

This was a single-center observational study with the aim to investigate the prevalence of HALT and RLM in the Perceval sutureless bioprosthesis and it was not designed to find predictors of, nor adverse events associated with, these phenomena. The study might have been underpowered to detect differences regarding patient characteristics, postoperative outcomes, and anticoagulation treatment. It is noteworthy that several patients receiving anticoagulation therapy at the time of the CT scan demonstrated HALT as well as RLM. Patients were not included in the study at the time of valve replacement and therefore the time intervals between AVR and CT examinations varied considerably. Furthermore, no echocardiographic analyses were performed as a part of this study. Because the Perceval sutureless prosthesis has similarities with both conventional surgical as well as transcatheter aortic bioprostheses, investigation of HALT and RLM of this prosthesis is of particular interest. Other strengths of this study include the high proportion of included patients and a very low rate of nondiagnostic cardiac CT examinations.

Conclusion

HALT and RLM were frequent findings in the Perceval sutureless bioprosthesis. HALT was found in all patients with RLM. Both HALT and RLM were found in patients with ongoing anticoagulation treatment. Whether these CT findings are associated with adverse events is currently unknown and needs further study.

Sources of Funding

This study was supported by the Mats Kleberg Foundation and a donation from Mr Fredrik Lundberg. Dalén was financially supported by Hirsch Fellowship.

Disclosures

Svenarud is a consultant for LivaNova. The other authors have no conflicts of interest to declare.

References

- Pache G, Schoechlin S, Blanke P, Dorfs S, Jander N, Arepalli CD, Gick M, Buettner HJ, Leipsic J, Langer M, Neumann FJ, Ruile P. Early hypo-attenuated leaflet thickening in balloon-expandable transcatheter aortic heart valves. *Eur Heart J*. 2016;37:2263–2271.
- Makkar RR, Fontana G, Jilalawi H, Chakravarty T, Kofoed KF, de Backer O, Asch FM, Ruiz CE, Olsen NT, Trento A, Friedman J, Berman D, Cheng W, Kashif M, Jelmin V, Kliger CA, Guo H, Pichard AD, Weissman NJ, Kapadia S, Manasse E, Bhatt DL, Leon MB, Sondergaard L. Possible subclinical leaflet thrombosis in bioprosthetic aortic valves. *N Engl J Med*. 2015;373:2015–2024.
- Leetmaa T, Hansson NC, Leipsic J, Jensen K, Poulsen SH, Andersen HR, Jensen JM, Webb J, Blanke P, Tang M, Norgaard BL. Early aortic transcatheter heart valve thrombosis: diagnostic value of contrast-enhanced multidetector computed tomography. *Circ Cardiovasc Interv*. 2015;8:e001596. DOI: 10.1161/CIRCINTERVENTIONS.114.001596.
- Chakravarty T, Sondergaard L, Friedman J, De Backer O, Berman D, Kofoed KF, Jilalawi H, Shiota T, Abramowitz Y, Jorgensen TH, Rami T, Israr S, Fontana G, de Knecht M, Fuchs A, Lyden P, Trento A, Bhatt DL, Leon MB, Makkar RR; Resolve, Investigators S. Subclinical leaflet thrombosis in surgical and transcatheter bioprosthetic aortic valves: an observational study. *Lancet*. 2017; pii: S0140-6736(17)30757-2. DOI: 10.1016/S0140-6736(17)30757-2. [Epub ahead of print].
- Laschinger JC, Wu C, Ibrahim NG, Shuren JE. Reduced leaflet motion in bioprosthetic aortic valves—the FDA perspective. *N Engl J Med*. 2015;373:1996–1998.
- Anselmino M, Andria A. Embolization from biological prosthetic aortic root. *Eur J Echocardiogr*. 2006;7:228–229.
- Pozsonyi Z, Lengyel M. Successful thrombolysis of late, non-obstructive mitral bioprosthetic valve thrombosis: case report and review of the literature. *J Heart Valve Dis*. 2011;20:526–530.
- Roudaut R, Serri K, Lafitte S. Thrombosis of prosthetic heart valves: diagnosis and therapeutic considerations. *Heart*. 2007;93:137–142.
- LivaNova PLC announces the first patient enrolled in the PERSIST-AVR Trial. Available at: http://www.livanova.com/investor-relations/pressreleases/news_release_2153818. Accessed May 21, 2016.
- Fischlein T, Meuris B, Hakim-Meibodi K, Misfeld M, Carrel T, Zembala M, Gaggianesi S, Madonna F, Laborde F, Asch F, Haverich A; Investigators CT. The sutureless aortic valve at 1 year: a large multicenter cohort study. *J Thorac Cardiovasc Surg*. 2016;151:1617–1626.e4.
- Budoff MJ, Cohen MC, Garcia MJ, Hodgson JM, Hundley WG, Lima JA, Manning WJ, Pohost GM, Raggi PM, Rodgers GP, Rumberger JA, Taylor AJ, Creager MA, Hirshfeld JW Jr, Lorell BH, Merli G, Rodgers GP, Tracy CM, Weitz HH; American College of Cardiology F, American Heart A, American College of Physicians Task Force on Clinical C, American Society of E, American Society of Nuclear C, Society of Atherosclerosis I, Society for Cardiovascular A, Interventions, Society of Cardiovascular Computed T. ACCF/AHA clinical competence statement on cardiac imaging with computed tomography and magnetic resonance. *Circulation*. 2005;112:598–617.
- Pfleiderer T, Achenbach S. Aortic valve stenosis: CT contributions to diagnosis and therapy. *J Cardiovasc Comput Tomogr*. 2010;4:355–364.
- Hansson NC, Grove EL, Andersen HR, Leipsic J, Mathiassen ON, Jensen JM, Jensen KT, Blanke P, Leetmaa T, Tang M, Krusell LR, Klaaborg KE, Christiansen EH, Terp K, Terkelsen CJ, Poulsen SH, Webb J, Botker HE, Norgaard BL. Transcatheter aortic valve thrombosis: incidence, predisposing factors, and clinical implications. *J Am Coll Cardiol*. 2016;68:2059–2069.
- Yanagisawa R, Hayashida K, Yamada Y, Tanaka M, Yashima F, Inohara T, Arai T, Kawakami T, Maekawa Y, Tsuruta H, Itabashi Y, Murata M, Sano M, Okamoto K, Yoshitake A, Shimizu H, Jinzaki M, Fukuda K. Incidence, predictors, and mid-term outcomes of possible leaflet thrombosis after TAVR. *JACC Cardiovasc Imaging*. 2016; pii: S1936-878X(16)30897-X. DOI: 10.1016/j.jcmg.2016.11.005. [Epub ahead of print].
- Reynolds MW, Fahrback K, Hauch O, Wygant G, Estok R, Cella C, Nalysnyk L. Warfarin anticoagulation and outcomes in patients with atrial fibrillation: a systematic review and metaanalysis. *Chest*. 2004;126:1938–1945.
- Nishimura RA, Otto CM, Bonow RO, Carabello BA, Erwin JP III, Guyton RA, O’Gara PT, Ruiz CE, Skubas NJ, Sorajja P, Sundt TM III, Thomas JD; American College of Cardiology/American Heart Association Task Force on Practice G. 2014 AHA/ACC guideline for the management of patients with valvular heart disease: a report of the American College of Cardiology/American Heart Association Task Force on Practice Guidelines. *J Am Coll Cardiol*. 2014;63:e57–e185.
- Joint Task Force on the Management of Valvular Heart Disease of the European Society of C, European Association for Cardio-Thoracic S, Vahanian A, Alfieri O, Andreotti F, Antunes MJ, Baron-Esquivias G, Baumgartner H, Borger MA, Carrel TP, De Bonis M, Evangelista A, Falk V, Jung B, Lancellotti P, Pierard L, Price S, Schafers HJ, Schuler G, Stepinska J, Swedberg K, Takkenberg J, Von Oppell UO, Windecker S, Zamorano JL, Zembala M. Guidelines on the management of valvular heart disease (version 2012). *Eur Heart J*. 2012;33:2451–2496.
- Perceval sutureless aortic heart valve instructions for use. Available at: http://www.accessdata.fda.gov/cdrh_docs/pdf15/P150011d.pdf. Accessed June 7, 2016.
- Huck V, Schneider MF, Gorzelanny C, Schneider SW. The various states of von Willebrand factor and their function in physiology and pathophysiology. *Thromb Haemostasis*. 2014;111:598–609.
- Meuris B, Flameng WJ, Laborde F, Folliguet TA, Haverich A, Shrestha M. Five-year results of the pilot trial of a sutureless valve. *J Thorac Cardiovasc Surg*. 2015;150:84–88.
- Shrestha M, Fischlein T, Meuris B, Flameng W, Carrel T, Madonna F, Misfeld M, Folliguet T, Haverich A, Laborde F. European multicentre experience with the sutureless Perceval valve: clinical and haemodynamic outcomes up to 5 years in over 700 patients. *Eur J Cardiothorac Surg*. 2016;49:234–241.

SUPPLEMENTAL MATERIAL

Data S1.

Supplemental Methods

Perceval sutureless aortic valve bioprosthesis

The biologic component consists of glutaraldehyde-fixed bovine pericardium treated with homocysteic acid and the stent is made of an elastic nickel-titanium alloy covered by Carbofilm (LivaNova). The design features one proximal and one distal ring segment and nine vertical struts designed to support the valve and allow the prosthesis to anchor to the aortic root and the sinus of Valsalva. The stent supports the valve and holds it in place without the need for suturing. To aid the positioning of the prosthesis into the aortic annulus, the inflow ring has three loops through which temporary guiding sutures are passed. At the back table before implantation, the valve is collapsed with a device-specific system provided by the manufacturer and after temporary deformation the valve can return to its original shape owing to elastic alloy design.

Sutureless surgical aortic valve replacement

A transverse aortotomy approximately 3.5 cm above the aortic annulus was performed. After removal of the native valve leaflets, complete decalcification of the annulus was performed. Product-specific seizers were used to estimate annular size. Three guiding sutures were placed at the nadir of each valve sinus and passed through the corresponding loops in the inflow ring of the valve prosthesis. At the back table, the prosthesis was collapsed and loaded onto the delivery device. The valve was released at the level of the aortic annulus, followed by dilation of the inflow ring segment with a specifically designed balloon catheter at 4 atm for 30 s. The guiding sutures were removed and the aortotomy closed. After weaning from cardiopulmonary bypass, intraoperative transesophageal echocardiography was performed to confirm correct positioning of the prosthesis.

Cardiac computed tomography data acquisition

All patients were informed to avoid nicotine and caffeine 4 hours prior to the cardiac CT examination. For patients without any contraindications and with a systolic blood pressure >110 mmHg, oral metoprolol (50 mg if heart rate 60-65 bpm, 100 mg if heart rate >65 bpm) was administered 1 hour prior to scheduled CT examination. A 16-gauge peripheral venous catheter was inserted into the antecubital vein. ECG leads were placed midclavicular and lateral.

All patients were scanned by using a dual source 2x64 row multidetector computed tomograph (Siemens Somatom Definition Flash, Siemens Healthcare, Forchheim, Germany). Scanning parameters were as follows: retrospective ECG gating, 100-120 kVp, automatic dose modulation (CARE Dose), full dose R-R scanning (no ECG mA modulation), quality reference 370 mAs, 64 x 0.6 mm detector collimation, 0.28 seconds rotation time (75 ms temporal resolution). In order to reduce the risk of arrhythmia during scanning the iso-osmolar intravenous contrast medium (CM) iodixanol 320 mg iodine per mL (Visipaque, GE Healthcare, Stockholm, Sweden) was used. The intravenous CM was injected with a fixed injection time of 8 seconds and a dose of 200 mg iodine/kg body weight. This resulted in a dose variation of 31-50 ml with an injection rate of 3.9-6.3 ml per second. For patients examined with 120 kVp, another 20% was added to the calculated individual CM dose, in order to compensate for the lower level of x-ray attenuation of the CM molecule at 120 kVp compared to 100 kVp. This resulted in a maximum CM dose of 60 ml. Delay time was defined by using the test bolus technique: 10 ml of iodixanol 320 mg iodine/ml was injected at the same individual injection rate calculated for the cardiac CT examination. Monitoring scans were obtained every second. A delay of 2 seconds was added to the time to peak automatically calculated by the CT scanner analysis program from a 10 mm region of interest placed in the ascending aorta.

All acquired CT data was reconstructed to 0.75 mm slice thickness with an increment of 0.4 mm at 5% intervals (20 phases) throughout the R-R interval and at best systolic and diastolic phase.

All reconstructed image data was transferred to a dedicated workstation (Advantage Workstation, ADW 4.6, GE Healthcare, Milwaukee, USA) for post-processing and time resolved volume rendering (VR). In order to simplify the transformation of the time-resolved image data set into dynamic VR reconstructions, four different 3D presets were created, corresponding to different levels of intravenous CM enhancement, measured as Hounsfield units (HU), in the ascending aorta. The 5% acquisition data set was used for the creation of time-resolved 4D VR. A 2-image 3D VR was made from the best systolic and diastolic phase (one en face VR image at maximal leaflet opening and one in diastole).

Cardiac computed tomography analysis

Cardiac CT data analysis was performed using the syngo.via software (Siemens Healthcare) on a PACS workstation. The optimal image display setting for leaflet visualization was chosen on an individual basis, but in general at a window width of 800–1200 Hounsfield units (HU) and a level of 200–300 HU.

In the presence of HALT, the maximum thickness of the cusp was measured in mid-diastole, using a 1-mm MPR perpendicular to the aortic annulus and to the cusp to be analyzed. The prosthetic valve leaflets were defined according to their location relative to the sinus of Valsalva: right cusp, left cusp, and non-coronary cusp and the number of affected cusps was noted.

During subsequent separate reading sessions, the two readers performed additional analyses of leaflet motion, with access only to three-dimensional (3D) volume-rendered (VR) images of the aortic-valve bioprosthesis, blinded to findings of previous MPR analyses. First, they had access to two 3D VR en face images of the aortic valve prosthesis: one image in diastole and one image at maximal leaflet opening, similar to analyses previously described. In a final reading, assessment of leaflet motion was based on time-resolved VR (4D VR) images.

Supplemental Results

Validation of computed tomography evaluation methods

When comparing two independent readers' assessment of RLM, based on time-resolved MPR images of 46 patients, there was 100% agreement (Cohen's kappa 1.0). Interobserver agreement regarding the presence of HALT, based on still MPR images, was almost complete (overall agreement 96%, Cohen's kappa 0.91, 95% CI 0.78-1.0).

Evaluation of RLM based on 3D VR images alone correlated with findings based on thorough assessment of MPR, but interobserver variability was greater. For assessment of two VR en face images of the bioprosthesis (one in diastole and one at maximal leaflet opening; Figure 7) the proportion of overall agreement with MPR analysis was 85% (Cohen's kappa 0.68, 95% CI 0.47-0.89). For assessment of leaflet motion based on time-resolved VR (4D VR, Supplementary video 4-7) images overall agreement with MPR analysis was 89% (Cohen's kappa 0.76, 95% CI 0.57-0.95). Interobserver agreement was moderate and identical for the two methods of assessment based on VR images alone (overall agreement 76%, Cohen's kappa 0.54, 95% CI 0.33-0.75). No cases of RLM were missed when evaluating VR images alone, but there were false positive cases as compared with MPR assessments. We found 3 false positive cases for diastolic vs. systolic VR images, and 3 false positive cases for 4D VR images.

Table S1. Prosthesis size

	Total population (n=47)	No HALT (n=29)	HALT (n=18)	p Value	Normal leaflet motion (n=33)	RLM (n=13)	p Value
<i>Prosthesis size</i>							
Small	4/47 (9%) 2.04 (0.66)	4/4 (100%) 2.04 (0.66)	0	-	4/4 (100%) 2.04 (0.66)	0	-
Medium	18/47 (38%) 1.85 (0.37)	11/18 (61%) 1.95 (0.35)	7/18 (39%) 1.69 (0.36)	0.15	14/18 (78%) 1.93 (0.36)	4/18 (22%) 1.56 (0.25)	0.068
Large	20/47 (43%) 2.27 (0.34)	11/20 (55%) 2.48 (0.28)	9/20 (45%) 2.04 (0.24)	0.002	12/19 (63%) 2.37 (0.36)	7/19 (37%) 2.10 (0.23)	0.093
Extra large	5/47 (11%) 2.37 (0.51)	3/5 (60%) 2.13 (0.52)	2/5 (40%) 2.73 (0.32)	0.25	3/5 (60%) 2.13 (0.52)	2/5 (40%) 2.73 (0.32)	0.25

Implanted prosthesis size and prosthetic valve opening area in relation to HALT and leaflet motion in 47 patients who underwent computed tomography at different time points after surgical aortic valve replacement with the Perceval sutureless aortic valve bioprosthesis. Data are n (%) and mean aortic valve area (standard deviation) in cm². HALT = hypo-attenuated leaflet thickening; RLM = reduced valve leaflet motion.

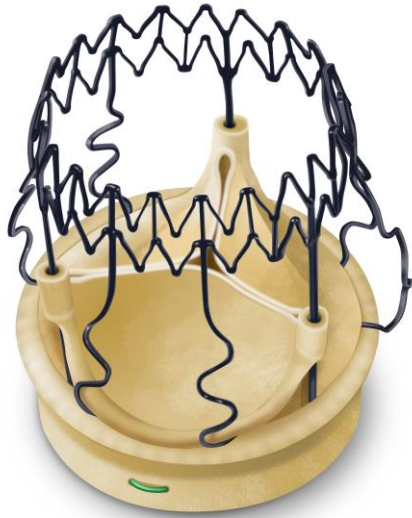


Figure S1. Perceval Sutureless Aortic Valve Bioprosthesis (LivaNova, Milan, Italy).

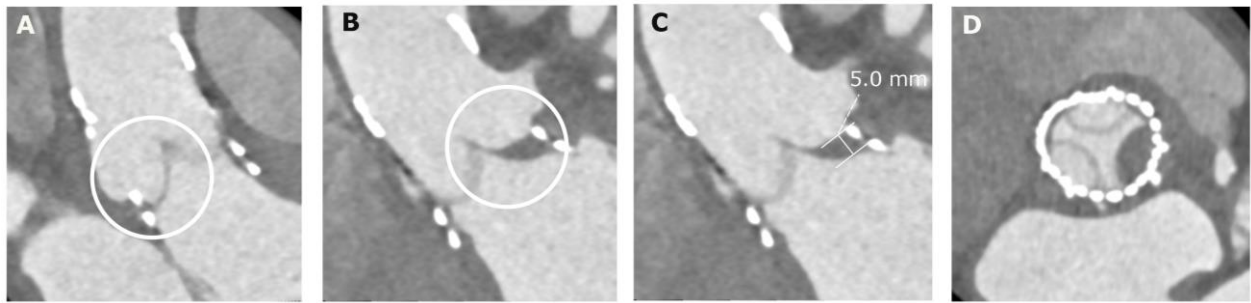


Figure S2. Cardiac Computed Tomography Multiplanar Reformatted Reconstructions of a Perceval Sutureless Aortic Valve Bioprosthesis in Mid-diastole.

The non-coronary cusp (*panel A*) was normal, with no signs of hypo-attenuated leaflet thickening. The left cusp (*panel B*) was markedly thickened with hypo-attenuated leaflet thickening. The maximum leaflet thickness was 5 mm (*panel C*). The three-valve leaflets are shown simultaneously; two of them normal and the left cusp with hypo-attenuated leaflet thickening (*panel D*).

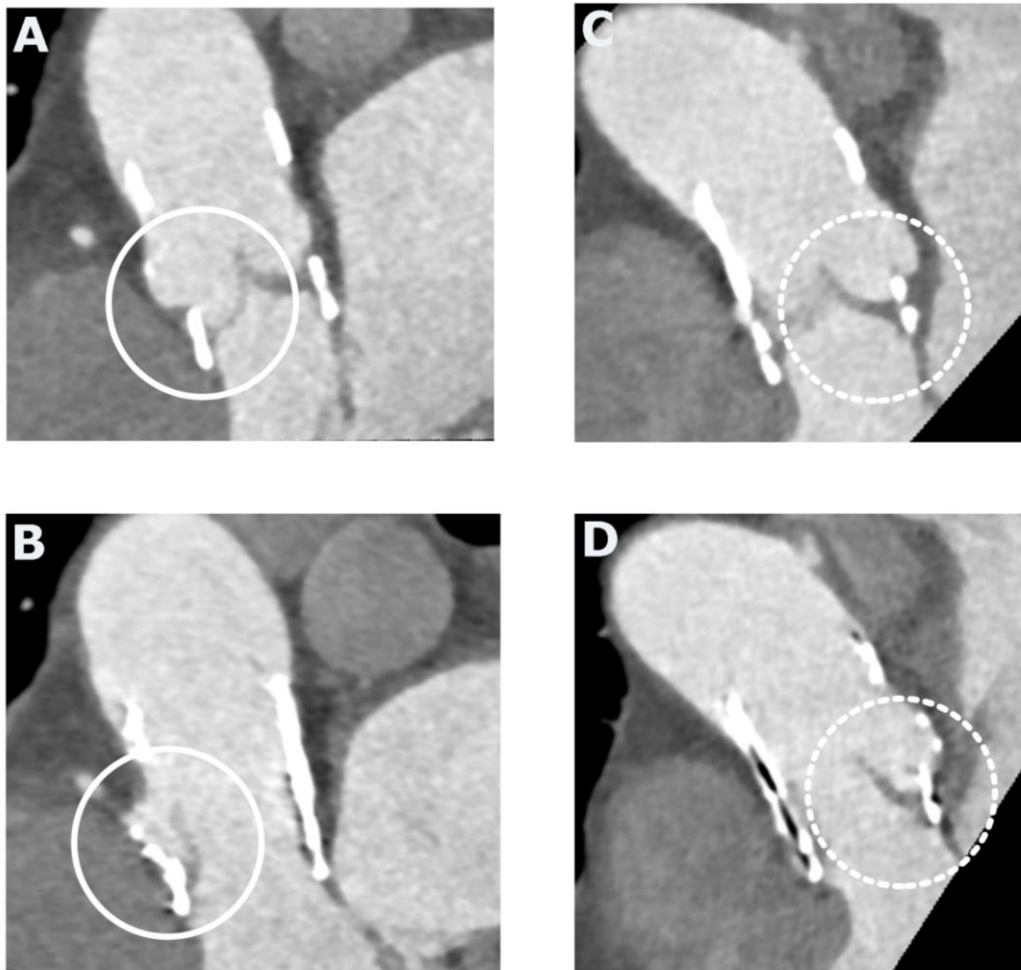


Figure S3. Multiplanar Reformatted Reconstructions for Evaluation of Leaflet Motion in a Perceval Sutureless Aortic Valve Bioprosthesis. Top panels show images in diastole and bottom panels show images of maximum leaflet opening in systole. Images to the left show the normal right cusp (white circle) in diastole (*panel A*) and fully open in systole (*panel B*). Images to the right show the non-coronary cusp (dashed circle) of the same patient in diastole (*panel C*) and with reduced leaflet opening in systole (*panel D*). Hypo-attenuated leaflet thickening of the non-coronary cusp was also present. Dynamic images are presented in Videos S1A–D, 2A–B, 3A–D.

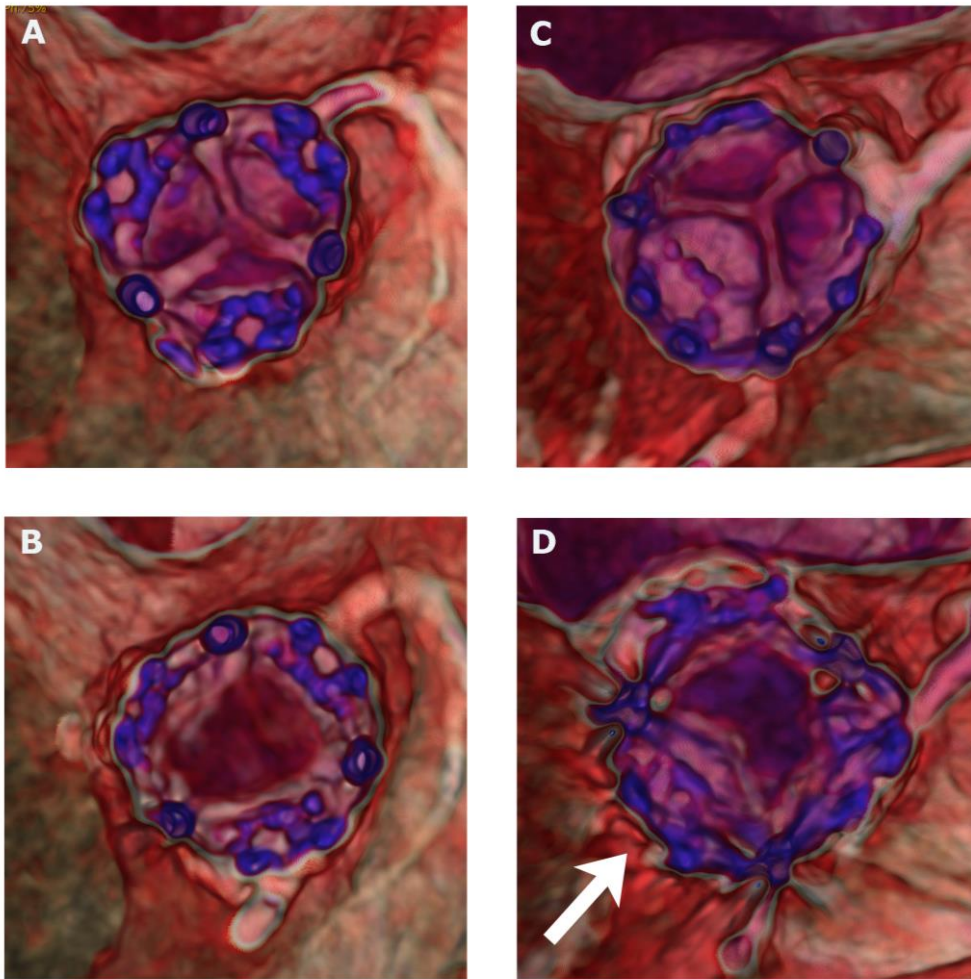


Figure S4. 3D Volume-rendered en face Images of the Perceval Sutureless Aortic Valve Bioprosthesis. Top panels show images in diastole and bottom panels show images in systole. Images to the left show a normal bioprosthesis in diastole (*panel A*) and in systole (*panel B*). To the right, a bioprosthesis with reduced motion of the right cusp (white arrow) is shown in diastole (*panel C*) and in systole (*panel D*). Dynamic 4D volume-rendered images are presented in Videos S4–S7).

Video Legends:

Videos S1A-D: Cardiac computed tomography (CT) dynamic multiplanar reformatted reconstructions (MPR) of a Perceval sutureless aortic valve bioprosthesis, with normal motion of all three leaflets. Preferred program for viewing: VLC Media Player. **S1A)** Images reconstructed in the opening plane of the valve, throughout the cardiac cycle, showing normal motion of all three leaflets. **S1B)** Images reconstructed perpendicularly to the right cusp, throughout the cardiac cycle, showing normal motion of the right cusp (located to the left in the dynamic images). **S1C)** Images reconstructed perpendicularly to the left cusp, throughout the cardiac cycle, showing normal motion of the left cusp (located to the left in the dynamic images). **S1D)** Images reconstructed perpendicularly to the non-coronary cusp, throughout the cardiac cycle, showing normal motion of the non-coronary cusp (located to the right in the dynamic images).

Videos S2A-B: Cardiac computed tomography (CT) dynamic multiplanar reformatted reconstructions (MPR) of a Perceval sutureless aortic valve bioprosthesis, with reduced leaflet motion of one cusp. Preferred program for viewing: VLC Media Player. **S2A)** Images reconstructed in the opening plane of the valve, throughout the cardiac cycle, showing reduced leaflet motion of the left cusp and normal leaflet motion of the other two cusps. **S2)** Images reconstructed perpendicularly to the left cusp, throughout the cardiac cycle, showing markedly reduced motion of the left cusp (located to the right in the dynamic images). Hypo-attenuated leaflet thickening of the left cusp is present.

Videos 3A-D: Cardiac computed tomography (CT) dynamic multiplanar reformatted reconstructions (MPR) of a Perceval sutureless aortic valve bioprosthesis, with reduced leaflet motion of two cusps. Preferred program for viewing: VLC Media Player. **S3A)** Images reconstructed in the opening plane of the valve, throughout the cardiac cycle, showing reduced leaflet motion of the left and right cusps and normal leaflet motion of the non-coronary cusp.

S3B) Images reconstructed perpendicularly to the left cusp, throughout the cardiac cycle, showing reduced motion of the left cusp (located to the right in the dynamic images). Hypo-attenuated leaflet thickening of the left cusp is present. **S3C)** Images reconstructed perpendicularly to the right cusp, throughout the cardiac cycle, showing reduced motion of the right cusp (located to the right in the dynamic images). Hypo-attenuated leaflet thickening of the right cusp is present, involving only the basal parts of the leaflet. **S3D)** Images reconstructed perpendicularly to the non-coronary cusp, throughout the cardiac cycle, showing normal motion of the non-coronary cusp (located to the left in the dynamic images).

Videos S4-7: Cardiac computed tomography (CT) time-resolved volume rendered (4D VR) en face images of four different Perceval sutureless aortic valve bioprostheses. Preferred program for viewing: VLC Media Player.

Video S4: Aortic valve bioprosthesis with normal motion of all three leaflets, throughout the cardiac cycle.

Video S5: Aortic valve bioprosthesis with normal motion of all three leaflets, throughout the cardiac cycle.

Video S6: Aortic valve bioprosthesis with reduced leaflet motion of the left cusp.

Video S7: Aortic valve bioprosthesis with reduced leaflet motion of the right cusp. Reduced motion is also present in a portion of the left cusp, but not in the entire cusp (which is more reliably evaluated using multiplanar reformatted images).