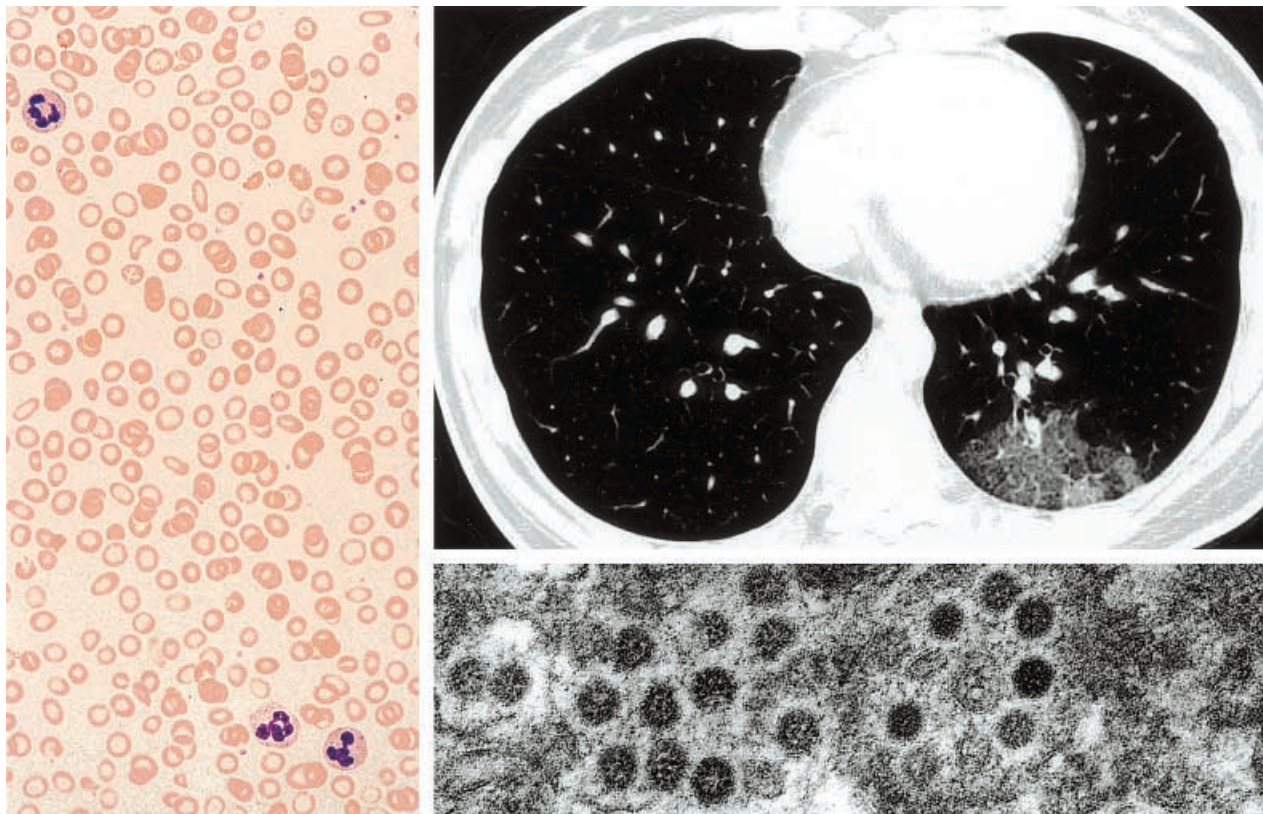


IMAGES IN HAEMATOLOGY

## Severe acute respiratory syndrome (SARS)



Severe acute respiratory syndrome (SARS) is an emerging infectious disease caused by a novel coronavirus (SARS coronavirus). Most patients present with fever, chills and myalgia, followed by development of respiratory symptoms. The image shows the early signs of this syndrome: Left, the peripheral blood shows lymphopenia. In this field of the peripheral smear, three neutrophils are seen, but there are no lymphocytes. Upper right, high resolution computerized tomography (CT) scan of the lung shows an area of ground glass attenuation over the peripheral region of the left lower lobe. Lower right: electron microscopy of lung biopsy shows the presence of coronavirus. The viral particles are enveloped, and show short radiating spikes.

*Departments of Pathology and Radiology & Imaging, Queen Elizabeth Hospital, Hong Kong, China.  
E-mail: kfwong@ha.org.hk*

K. F. WONG  
T. S. To  
JOHN K. C. CHAN