

Prognostic values of GMPS, PR, CD40, and p21 in ovarian cancer

Ping Wang¹, Zengli Zhang², Yujie Ma¹, Jun Lu¹, Hu Zhao¹, Shuiliang Wang¹, Jianming Tan^{1,3} and Bingyan Li²

¹Fujian Key Laboratory of Transplant Biology, Fuzhou General Hospital, Fuzhou, Fujian, China

²Department of Nutrition and Food Hygiene, School of Public Health, Soochow University, Suzhou, Jiangsu, China

³Fujian Hongyi Health Institute, Fuzhou, Fujian, China

ABSTRACT

Early detection and prediction of prognosis and treatment responses are all the keys in improving survival of ovarian cancer patients. This study profiled an ovarian cancer progression model to identify prognostic biomarkers for ovarian cancer patients. Mouse ovarian surface epithelial cells (MOSECs) can undergo spontaneous malignant transformation *in vitro* cell culture. These were used as a model of ovarian cancer progression for alterations in gene expression and signaling detected using the Illumina HiSeq2000 Next-Generation Sequencing platform and bioinformatical analyses. The differential expression of four selected genes was identified using the gene expression profiling interaction analysis (<http://gepia.cancer-pku.cn/>) and then associated with survival in ovarian cancer patients using the Cancer Genome Atlas dataset and the online Kaplan–Meier Plotter (<http://www.kmplot.com>) data. The data showed 263 aberrantly expressed genes, including 182 up-regulated and 81 down-regulated genes between the early and late stages of tumor progression in MOSECs. The bioinformatic data revealed four genes (i.e., guanosine 5'-monophosphate synthase (GMPS), progesterone receptor (PR), CD40, and p21 (cyclin-dependent kinase inhibitor 1A)) to play an important role in ovarian cancer progression. Furthermore, the Cancer Genome Atlas dataset validated the differential expression of these four genes, which were associated with prognosis in ovarian cancer patients. In conclusion, this study profiled differentially expressed genes using the ovarian cancer progression model and identified four (i.e., GMPS, PR, CD40, and p21) as prognostic markers for ovarian cancer patients. Future studies of prospective patients could further verify the clinical usefulness of this four-gene signature.

Submitted 15 August 2018
Accepted 14 December 2018
Published 25 January 2019

Corresponding authors
Jianming Tan, tanjm156@xmu.edu.cn
Bingyan Li, bingyanli@suda.edu.cn

Academic editor
D. Gareth Evans

Additional Information and
Declarations can be found on
page 15

DOI 10.7717/peerj.6301

© Copyright
2019 Wang et al.

Distributed under
Creative Commons CC-BY 4.0

OPEN ACCESS

Subjects Bioinformatics, Cell Biology, Oncology

Keywords Ovarian cancer, Gene profiling, Biomarker, TCGA dataset, Prognosis

INTRODUCTION

Ovarian cancer is a lethal disease in women. Epithelial ovarian cancer accounts for approximately 90% of all ovarian malignancies (*Siegel, Miller & Jemal, 2018*) and is frequently diagnosed at the advanced stages when cancer cells have already metastasized to other organs (*Jayson et al., 2014*). For example, ovarian cancer only represents 2.5% of all female malignancies but contributes to 5% of female cancer deaths, indicating a poor 5-year survival rate (*Jayson et al., 2014*). However, if diagnosed early, the 5-year survival

rate could reach approximately 93% (Torre et al., 2018). Thus, early tumor detection and effective prognosis prediction are the keys in improving survival of ovarian cancer patients. To this end, previous studies have searched and evaluated biomarkers to diagnose this now deadly disease early and to predict survival or treatment responses or target the biomarker genes to develop novel therapies for ovarian cancer (Jayson et al., 2014) as well as analyzed the differential gene expression patterns between mucinous and clear cell ovarian cancers or between low-grade, low malignant potential and high-grade, metastatic ovarian cancer (Bonome et al., 2005; Meinhold-Heerlein et al., 2005). Other studies associated alterations in gene or gene expression as biomarkers for the early detection or risk assessment of ovarian cancer (Earp et al., 2018; Urban et al., 2018). However, to date, there are no useful or reliable molecular or clinical markers available for such a purpose (Force et al., 2018). The current approaches or analyses of differential gene expression profiles usually compare ovarian cancer vs. normal tissues, which leads to limited data; nevertheless, the characterization of differential gene expression profiles between early stage precursor lesions and ovarian cancer could provide novel insights into identifying biomarkers for early detection or prognosis prediction and therapeutic targets of ovarian cancer.

We established and characterized an *in vitro* cell model of mouse epithelial ovarian cancer progression according to the method of previous research (Gamwell, Collins & Vanderhyden, 2012). This cell model system uses isolated ovarian surface epithelial cells (MOSECs) from mice and cultures them *in vitro*. These MOSECs can undergo spontaneous malignant transformation into epithelial ovarian cancer cells (Flesken-Nikitin et al., 2013b; Gamwell, Collins & Vanderhyden, 2012; McCloskey et al., 2014; Roberts et al., 2005). During *in vitro* cell culture and passages, the MOSECs show morphology changes and gene alterations (Flesken-Nikitin et al., 2013b; Gamwell, Collins & Vanderhyden, 2012; McCloskey et al., 2014; Roberts et al., 2005), which could be a good *in vitro* cell model to mimic human ovary carcinogenesis. Previous studies showed that the spontaneously transformed MOSECs had reliable formation of homologous HGSC tumors. MOSE-I cells refer as a pre-cancerous benign tumor, while MOSE-II cells are malignantly transformed cells (McCloskey et al., 2014).

To date, epithelial ovarian cancer has a terrible prognosis and detection of differentially expressed genes (DEGs) in ovarian cancer could better stratify the risk in predicting ovarian cancer in women and/or treatment responses. Thus, in this study, we first isolated MOSECs from six-month female BALB/c mice and continuously cultured and passaged them in more than 35 passages, during which we obtained early passaging MOSECs and later passaging MOSECs and named them MOSE-I and MOSE-II, respectively. These MOSE cells model is a credible in research on ovarian cancer because these two types of MOSECs displayed distinguished cell morphology and growth potential in soft agar. We thus utilized them to profile differentially expressed genes using the Illumina HiSeq2000 Next-Generation Sequencing (NGS) platform and bioinformatical analyses and to identify prognostic biomarkers for ovarian cancer patients using the gene expression profiling interaction analysis (GEPIA; <http://gepia.cancer-pku.cn/>). Our hypothesis was to utilize MOSECs to identify and evaluate DEGs as biomarkers for ovarian cancer early diagnosis and prognosis prediction; thus, we then associated these DEGs with survival of ovarian

cancer patients using the Cancer Genome Atlas dataset and the online Kaplan–Meier Plotter (<http://www.kmplot.com>) data. We also used the Gene Ontology (GO) and the Kyoto Encyclopedia of Genes (KEGG) tools to assess the functions of these DEGs for better understanding of ovarian cancer biology.

MATERIALS AND METHODS

Isolation and culture of MOSE cells

The animal protocol for this study was approved by the Institutional Animal Care and Use Committee (IACUC) of Fuzhou General Hospital (Fujian, China) and followed the regulatory animal care guidelines of the United State National Institute of Health (Bethesda, MD, USA). In this study, we obtained six-month female BALB/c mice from the Shanghai SLAC Laboratory Animal Co., Ltd. (Shanghai, China). We isolated mouse ovarian surface epithelial cells (MOSECs) and cultured them in the “MOSE medium” containing α -Minimum Essential Medium from Thermo-Fisher Scientific Company (Waltham, MA, USA) supplemented with 4% heat-inactivated 3:1 donor bovine serum: fetal bovine serum (Gibco, Gaithersburg, MD, USA), 5 U/ml of penicillin and 5 μ g/ml of streptomycin solution (Invitrogen, Carlsbad, CA), 0.1 μ g/ml of gentamicin (Invitrogen) at 37 °C with 5% CO₂ according to the previous described protocols (*Gamwell, Collins & Vanderhyden, 2012; McCloskey et al., 2014*). The MOSECs with spontaneously malignant transformation phenotypes were maintained in the MOSE medium according to a previous study (*Flesken-Nikitin et al., 2013a*), which have two phases, i.e., the early stage (MOSE-I; normal epithelial cells) and the later stage (MOSE-II; various phenotypes of ovarian cancer cells).

Generation and characterization of MOSE-I and MOSE-II cells

To induce spontaneous malignant transformation of MOSECs, we grew and passaged the primary cultured MOSECs in the MOSE medium continuously. The early passages of MOSECs were MOSE-I, whereas MOSECs at 35 passages or more become MOSE-II. To distinguish them, we monitored their morphology under an inverted phase contrast microscope (Thermo-Fisher, Waltham, MA, USA) and grew them in the soft agar. Specifically, cells were passaged from adherent cultures using 0.05% trypsin, washed with phosphate-buffered saline (PBS) to make a single cell suspension by passing cells through a syringe, and then 100 cells were plated into each of the 40-mm cell culture dishes and grown for 14 days. The cells were then stained with crystal violet (Sigma Aldrich Chemicals, St. Louis, MO, USA), photographed under an inverted microscope, and counted. For the soft agar assay, we first made the base layer agar by mixing 1:1 of 2 \times Ham’s F-12: the MOSE medium (Sigma Aldrich Chemicals, St. Louis, MO, USA) in 60-mm cell culture dishes and then mixing the cell suspension (2.5×10^4) with the ultrapure LMP agarose (Invitrogen, Carlsbad, CA, USA) at 37 °C and then pouring this into the top of the base layer of agar and incubating them at 37 °C for 7 days. The cell colonies were photographed using the EVOS XL imaging system (Invitrogen) and quantified using Image J software (National Institute of Health, Bethesda, MD, USA).

Next-generation sequencing of differentially expressed genes between MOSE-I and MOSE-II cells

To profile differentially expressed genes between MOSE-I and MOSE-II cells, we performed next-generation sequencing of differentially expressed genes between MOSE-I and MOSE-II cells. In brief, the total cellular RNA was isolated from MOSE-I and MOSE-II cells using Trizol Reagent (Invitrogen, Carlsbad, CA, USA) according to the manufacturer's protocol. After RNA quantitation and reverse transcription into cDNA, we prepared the cDNA library for each cell type using Illumina TruSeq Libraries (Illumina, #RS-122-2001, NY USA) and then performed next-generation sequencing of differentially expressed genes between MOSE-I and MOSE-II cells using the Illumina HiSeq2000 NGS platform available at Tigem Institute in Pozzuoli (Naples).

Bioinformatic analysis with the Gene Ontology (GO) terms and the Kyoto Encyclopedia of Genes and Genomes (KEGG) database

These differentially expressed genes (DEGs) were bioinformatically analyzed using the GO term to annotate the unique biological functions of these DEGs. We then further analyzed their signaling in the pathways using the KEGG database. The significant GO terms and pathways were generated using Fisher's exact test and statistically corrected using the false discovery rate (FDR) of the p -values.

Construction of DEGs into a protein-protein interaction (PPI) network

After bioinformatic analysis of these DEGs with the GO terms and the KEGG database, we further constructed these DEGs into the PPI network using STRING (version 9.1, <http://www.string-db.org/>) according to the previous description (*Franceschini et al., 2013*). This web resource contains a biological database for the comprehensive prediction of the known protein-protein interactions. We uploaded our DEGs into the STRING database; the web site then generated the PPIs for these DEGs. We used a combined score of >0.5 as the cut-off criterion to identify any given protein interacts with another one and then imported these PPI pairs into the Cytoscape software (<http://www.cytoscape.org/>) according to previous research (*Saito et al., 2012*) to help us to construct the PPI network, in which the hub nodes (the key proteins that possess important biological functions) were revealed by calculating the degree to connect to other proteins vs. non-connected ones.

Gene expression profiling interaction analysis (GEPIA)

GEPIA is a web tool (<http://gepia.cancer-pku.cn/>) to profile gene expressions between tumor and non-tumor tissues and provides interactive data analyses. In this study, we utilized this online tool to analyze the levels of four selected DEGs (i.e., GMPS, PR, CD40, and p21) between ovarian cancer specimens and normal controls and performed a Student's t -test to for statistical significance with a cut-off of p value <0.05 and four-fold changes.

The TCGA database and cBioPortal

The Cancer Genome Atlas database was used to store both DEGs and clinicopathological data on 30 different human cancers (*Tomczak, Czerwinska & Wiznerowicz, 2015*). In this study, we retrieved the ovary invasive carcinoma (TCGA, Provisional) dataset, which

includes DEGs data on 606 cases of ovarian cancer vs. 311 normal tissues. We then put our DEGs data vs. TCGA data into the cBioPortal (<http://www.cbioportal.org>), which is a web resource to help explore, visualize, and analyze DEGs data (Gao *et al.*, 2013). The overall survival (OS) and disease-free survival (DFS) were stratified by these DEGs and then calculated according to the cBioPortal's online instructions. In addition, we also generated the Kaplan–Meier curves of ovarian cancer patients stratified by the expression of GMPS, PR, Cd40, and p21 mRNA levels using the online Kaplan–Meier Plotter (<http://www.kmplot.com>) according to a previous study (Gyorffy *et al.*, 2013). This website accumulated data on the gene expression and survival of 4,142 ovary cancer patients. We analyzed the relapse-free survival (RFS) of ovarian cancer patients stratified by high vs. low expression of GMPS, PR, CD40, and p21 using the Kaplan–Meier curves and the log rank test and the hazard ratio with 95% confidence intervals (CI). The reason to select these four top hub genes was because they possessed a number-at-risk below the main plot (curve).

RESULTS

Characterization of MOSE-I and MOSE-II cells

In this study, we isolated MOSECs from female BALB/c mice and passaged them into MOSE-I and MOSE-II cells *in vitro*. We found that the early passages of MOSE-I cells grew slowly with doubling time of 48 h, whereas the growth rate MOSE-I increased when it was passaged more than 35 passages. Morphologically, MOSE-I cells started to lose the epithelial “cobblestone”-like appearance under an inverted microscope, which is the characteristic of early passage MOSE-I cells (Fig. 1A), consistent with previous studies (Gamwell, Collins & Vanderhyden, 2012; McCloskey *et al.*, 2014). Continual passaging of MOSE-I for more than 35 passages led it to be established as MOSE-II. MOSE-II loses the epithelial “cobblestone”-like morphology and transitions to a more mesenchymal morphology (Fig. 1A). To distinguish them, we monitored their morphology under an inverted phase contrast microscope and grew them in soft agar. The latter assay measures the anchorage-independent growth, which is the characteristic of transformed cells *in vitro*. Our data showed that MOSE-II cells were able to form colonies in the soft agar, whereas MOSE-I could not (Figs. 1B and 1D). We also assessed their proliferation capacity using the plate colony formation assay and found that MOSE-II formed more colonies with larger cell sizes than those of MOSE-I cells (Figs. 1C and 1E and 1F).

Profiling of differentially expressed genes (DEGs) between MOSE-I and MOSE-II cells

Using this cell model of MOSE-I and II, we profiled DEGs using the Illumina HiSeq2000 NGS platform. Our experiments were in three biological replicates to reduce sample variations due to cell heterogeneous cultures. MOSE-I cells were randomly selected at Passage 5 (P5), P15, and P25, respectively, while MOSE-II cells were selected at P50, P70 and P90, respectively. Among them, 14,218 genes were detected and analyzed. We found a total of 263 DEGs, which included 182 up-regulated and 81 down-regulated DEGs using

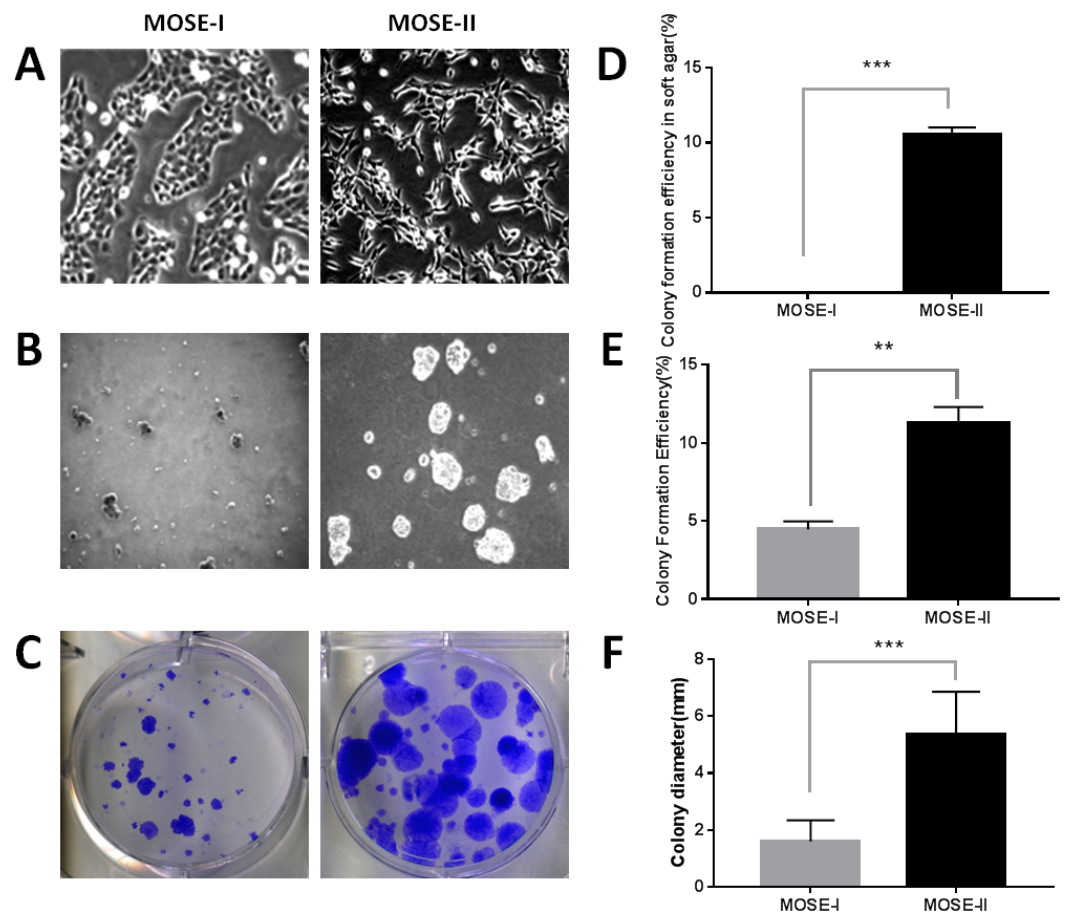


Figure 1 Characterization of MOSE-I and MOSE-II cells *in vitro*. (A) Bright-field inverted microscopy. Cells were grown at Passage 20 for MOSE-I and Passage 90 for MOSE-II and then photographed at a magnification of 100 \times . (B) The soft agar colony formation assay. MOSE-I (passage 20) and MOSE-II (passage 90) were grown in the soft agar for 7 days and photographed. (C) The plate colony formation assay. MOSE-I (passage 20) and MOSE-II (passage 90) were grown for 14 days and stained with crystal violet solution and photographed. The graphs were quantified data of the colony formation assay. ** $p < 0.01$ and *** $p < 0.0001$ analyzed by Student's t test. The data on E and D were generated by the Image J software, while the data on F were from the EVOS XL imaging system.

Full-size DOI: [10.7717/peerj.6301/fig-1](https://doi.org/10.7717/peerj.6301/fig-1)

Volcano plots (Fig. 2). The cut-off values for the up-regulated DEGs were $\log_2 \text{FC} > 2$ and $p < 0.05$, while the down-regulated DEGs were $\log_2 \text{FC} < -2$, $p < 0.05$ (Table 1).

Bioinformatical data on the GO terms, KEGG, and PPI network of the DEGs

The GO terms showed that these DEGs formed several important terms in cell biology, such as positive regulation of cell proliferation, positive regulation of transcription from RNA polymerase II promoter and signal transduction (Fig. 3B). The KEGG pathway analysis showed that these DEGs-formed hub genes were enriched in the pathways related to the PI3K-Akt signaling and pathways in cancer (Fig. 3A), both of which are positively associated with ovarian cancer development (Kurose *et al.*, 2001; Li, Zeng & Shen, 2014; Rossig *et al.*,

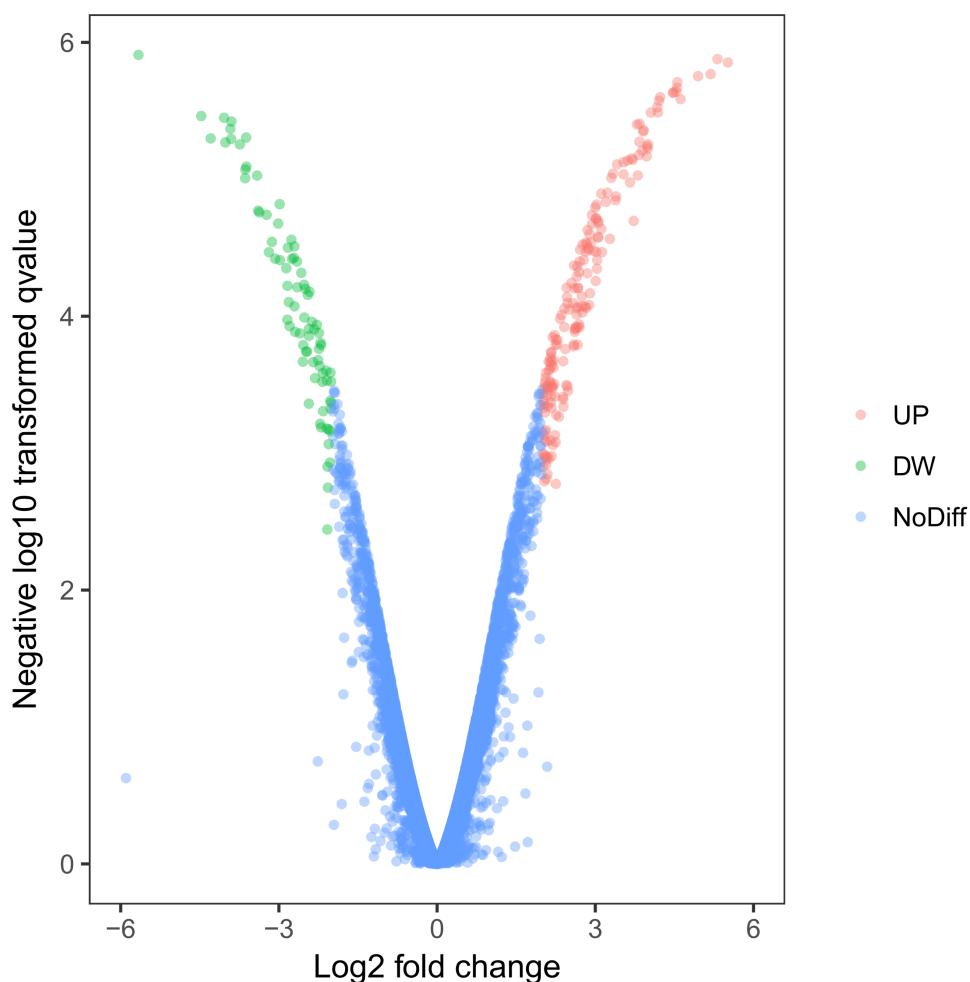


Figure 2 Identification of DEGs using Volcano plots. The X-axis indicates the fold change (logs value), whereas the Y-axis shows the p values (logs value). Each symbol represents a different gene, and the red/-green color shows the up- or downregulated genes falling under different criteria (p value and fold change threshold). A p value < 0.05 is considered as statistically significant, whereas the four fold changes were set as the threshold.

Full-size  DOI: [10.7717/peerj.6301/fig-2](https://doi.org/10.7717/peerj.6301/fig-2)

2001). Furthermore, the PPI network of these DEGs is shown in Fig. 4. In particular, there were 35 nodes forming the hub genes from 27 up-regulated and 8 down-regulated genes (Table 2).

Association of these DEGs-formed hub gene expressions with overall survival of ovarian cancer patients

We then associated the expression of these DEGs-formed hub genes with OS and DFS of ovarian cancer patients using TCGA database data. We first assessed the expression of all 35 hub genes in 182 tissue samples out of 263 ovary invasive cancer patients and found that among these genes, four (GMPS, PR, CD40, and p21) had the alteration rates of more than 10% (Fig. 5A). We then plotted the Kaplan–Meier curves and performed a log-rank test to associate them with OS and DFS of patients. Our data showed that the aberrant expression

Table 1 DEGs between MOSE-I and MOSE-II cells.

Gene name	Log2 fold change	p values
Up-regulated genes		
Ccbe1	5.514199	1.4E-06
Sfrp2	5.316823	1.32E-06
Cntnap2	5.187267	1.7E-06
Cd55	4.949248	1.76E-06
9930013L23Rik	4.617182	2.6E-06
Ephx1	4.554543	1.95E-06
Gnai1	4.548394	2.15E-06
Ctla2a	4.534042	2.29E-06
Csgalnact1	4.478922	2.32E-06
Ahsp	4.473507	2.34E-06
Pkhd11l1	4.230823	2.51E-06
Thy1	4.208894	2.67E-06
Apoe	4.188801	3.25E-06
Tmem45a	4.175247	2.98E-06
Scg5	4.052742	3.26E-06
Slc47a1	4.001494	5.55E-06
Akr1c13	3.99621	5.96E-06
Nxn12	3.980449	5.75E-06
Zfp385b	3.975438	6.79E-06
D630010B17Rik	3.920202	4.38E-06
Down-regulated genes		
Cst12	-5.66249	1.23E-06
Pcolce2	-4.47177	3.45E-06
Serpina3g	-4.29413	5.03E-06
Aif1l	-4.03994	3.55E-06
Tmem79	-4.01531	5.38E-06
Emb	-3.91989	4.28E-06
1810065E05Rik	-3.90506	5.07E-06
Kcnk1	-3.90055	3.78E-06
D0H4S114	-3.73926	5.56E-06
Pip5k1b	-3.01345	2.1E-05
Ano1	-3.07047	3.8E-05
Coro2b	-3.13207	2.86E-05
Cbfa2t3	-3.18901	3.41E-05
Glipr1	-3.23211	1.82E-05
Ms4a3	-3.63888	9.81E-06
Slain1	-3.63583	8.48E-06
Gmps	-3.62074	4.96E-06
Foxc2	-3.61526	8.09E-06
Emp1	-3.41282	9.39E-06
Nkx2-3	-3.39217	1.69E-05

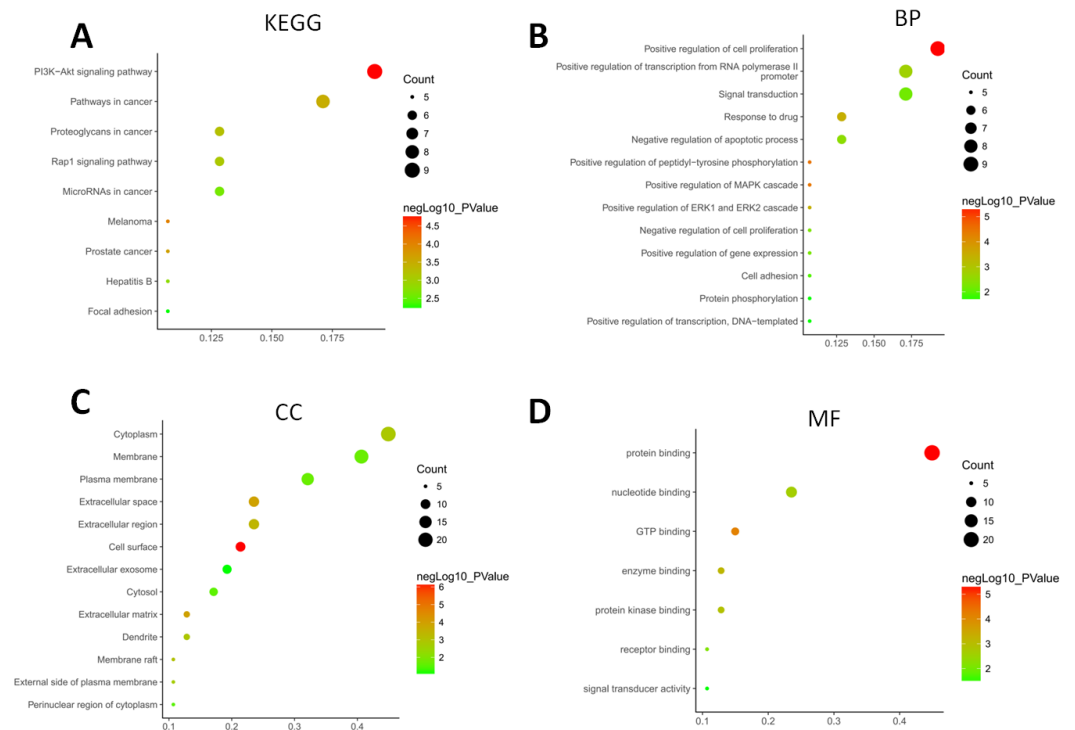


Figure 3 Functional and pathway enrichment analyses of DEGs-formed hub genes. (A) The Kyoto Encyclopedia of Genes and Genomes (KEGG) pathways enriched gene pathways of the DEGs-formed hub genes. (B) The Gene Ontology (GO) terms of DEGS related to the biological process. (C) The GO terms of DEGS related to the cellular component. (D) The GO terms of DEGS related to the molecular functions.

Full-size [DOI: 10.7717/peerj.6301/fig-3](https://doi.org/10.7717/peerj.6301/fig-3)

of GMPS, PR, CD40, and p21 mRNA was associated with poorer OS in patients (Fig. 5B) but not with DFS in patients (Fig. 5C).

Indeed, these four genes were also differentially expressed in ovarian cancer tissues vs. normal tissues; specifically, GMPS was highly expressed in ovary cancer tissues (Fig. 6A), which was associated with RFS in patients (Fig. 6E). In contrast, the expression of PR, CD40, and p21 mRNA was reduced in ovarian cancer tissues (Figs. 6B–6D), which was associated with poor RFS (Figs. 6F, 6G, 6H).

DISCUSSION

In the current study, we profiled DEGs between pre-malignant MOSE-I and highly malignant MOSE-II cells and found 182 up-regulated and 81 down-regulated DEGs. Our bioinformatical analysis showed that these DEGs function to positively regulate cell proliferation, gene transcription from RNA polymerase II promoter, and signal transduction, while KEGG pathway data showed that these DEGs could be related to the PI3K-Akt signaling and pathways in cancer. Furthermore, the PPI network analysis of these DEGs identified 35 hub genes (27 up-regulated and eight down-regulated genes) and that four of them were associated with poor overall survival in ovarian cancer patients. In addition, these four genes were also differentially expressed in ovarian cancer tissues

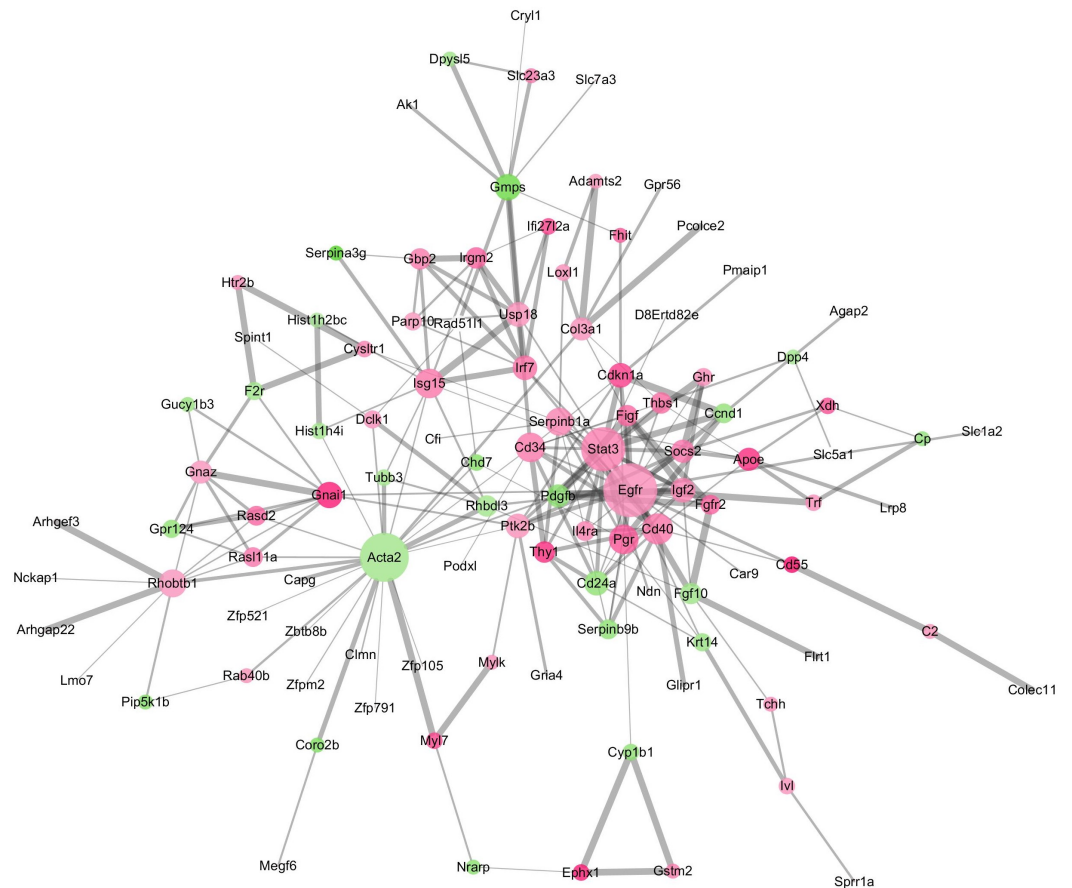


Figure 4 The DEGs-formed protein-protein interaction network. The red and green circles represent up- and down-regulated genes, respectively. The node represents genes and edges for their role in connection between proteins. The nodes are colored based on in-between significance, and the higher the value, the darker the color, whereas the node size is proportional to the degree value, i.e., the higher the value, the bigger the size. The thicker the line, the tighter the connection between the two proteins.

Full-size [DOI: 10.7717/peerj.6301/fig-4](https://doi.org/10.7717/peerj.6301/fig-4)

compared with human normal tissues. Specifically, GMPS was highly expressed in ovary cancer tissues, which was associated with RFS, whereas the expression of PR, CD40, and p21 mRNA was reduced in ovarian cancer tissues, which was associated with poor RFS. In conclusion, the data from the current study profiled and identified four DEGs, which could predict overall survival and recurrence-free survival in ovarian cancer patients. Future prospective study will need to validate our current data before using them clinically. Indeed, this *in vitro* cell model of ovarian cancer progression could provide a useful tool for identifying gene alterations and drug effect tests. In this system, MOSEs cultured *in vitro* can undergo spontaneously malignant transformation into ovarian cancer (McCloskey *et al.*, 2014). Morphologically, MOSE-II cells lost their normal epithelia “cobblestone” characteristic and were able to form soft agar colonies (McCloskey *et al.*, 2014) as well as gene alterations (Lv *et al.*, 2012; Roby *et al.*, 2000; Urzua, Best & Munroe, 2010). When MOSE-II cells were injected into the peritoneal cavity of immunodeficient animals, tumor metastases

Table 2 The hub genes with the node degree >5.

Number	Gene name	Node degree	Regulation
1	Egfr	26	up
2	Acta2	23	down
3	Stat3	20	up
4	Cd40	12	up
5	Cd34	11	up
6	PR	11	up
7	Isg15	11	up
8	Serpinb1a	10	up
9	Rhobtb1	10	up
10	Gmps	9	down
11	Gnai1	9	up
12	Cd24a	8	down
13	Ptk2b	8	up
14	Irf7	8	up
15	Igf2	8	up
16	P21	8	up
17	Usp18	8	up
18	Apoe	7	up
19	Gnaz	7	up
20	Col3a1	7	up
21	Pdgfb	7	down
22	Socs2	7	up
23	Thbs1	6	up
24	Rhbdl3	6	down
25	Thy1	6	up
26	Irgm2	6	up
27	Gbp2	6	up
28	Figf	6	up
29	Fgf10	6	down
30	Rasl11a	5	up
31	Rasd2	5	up
32	Il4ra	5	up
33	Serpinb9b	5	down
34	Ccnd1	5	down
35	Egfr2	5	up

and bloody ascites formed in the mouse peritoneal cavity (*Roberts & Schmelz, 2013; Roby et al., 2000*), which is typical of advanced human ovarian cancer (*Ahmed & Stenvers, 2013*). In 2014, McCloskey and his colleagues discovered that differentially expressed genes of MOSE-II were consistent with the differential genes of human high-grade serous ovarian cancer (HGSC) tumor samples and previous studies of ovarian cancer cell lines (*McCloskey et al., 2014*). HGSC tumors after immunohistochemical profiles confirmed that MOSE-II can be used as a homologous model of HGSC. Finally, MOSE-II expressing SCA1 appeared

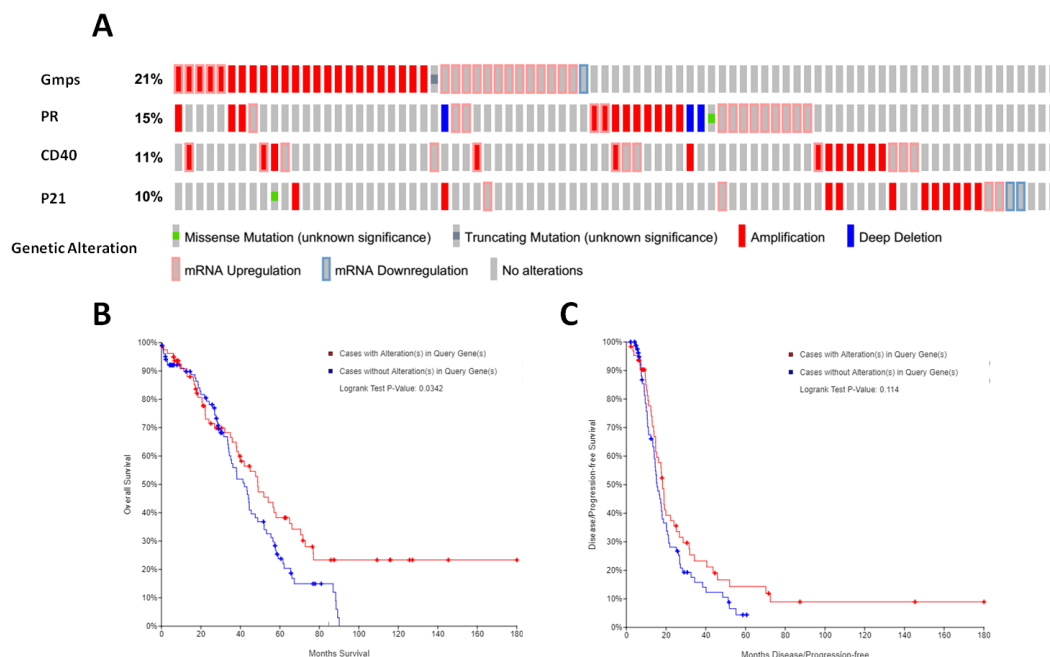


Figure 5 Identification and association of the top four-hub genes with survival of ovarian cancer patients. (A) The Oncoprint analysis to identify the four top hub genes. The cBioPortal represented the proportion and distribution of samples with alterations in hub genes. The graph is cropped to exclude samples without gene alterations or genetic alterations on the right. The red color indicates gene amplification, while the blue color represents gene deletion and the pink color gene up-regulation. (B) The Kaplan-Meier curves of overall survival (OS) stratified by altered expression of these four genes. (C) The Kaplan-Meier curves of disease-free survival (DFS) stratified by altered expression of these four genes.

Full-size DOI: 10.7717/peerj.6301/fig-5

to be more aggressive than ovarian cancer cell lines, with increased colony formation efficiency *in vitro* and faster onset of tumors *in vivo* (McCloskey *et al.*, 2014). Thus, this model of cells is useful in the future study of ovarian cancer prevention and treatment (Ricci, Brogini & Damia, 2013). In the current study, we profiled DEGs between MOSE-I and MOSE-II cells using this model system and found that DEGs were compatible with human disease. Furthermore, our PPI network analysis identified that 35 significant nodes and nine genes participate in the PI3K-Akt signaling pathway, which confirmed data from a previous study, indicating potential therapeutic targets for ovarian cancer (Li, Zeng & Shen, 2014). These genes are frequently altered, such as PIK3CA mutation or amplification in up to 30% ovarian cancer patients, while PTEN expression was lost in up to 40% of patients (Campbell *et al.*, 2004; Kurose *et al.*, 2001). In addition, six of these 35 hub genes are a part of the Rap1 signal pathway, and a previous study reported them to be associated with serous ovarian cancer metastasis (Che *et al.*, 2015).

Furthermore, these DEGs were annotated into the GO terms and were shown to positively regulate cell proliferation, which is one of six essential cancer hallmarks: self-sufficiency in growth signals (Hanahan & Weinberg, 2000). Indeed, the positive regulation of cell proliferation is the basis of cancer development and progression. Moreover, each of these pathways identified in the current study can promote or transform normal cells

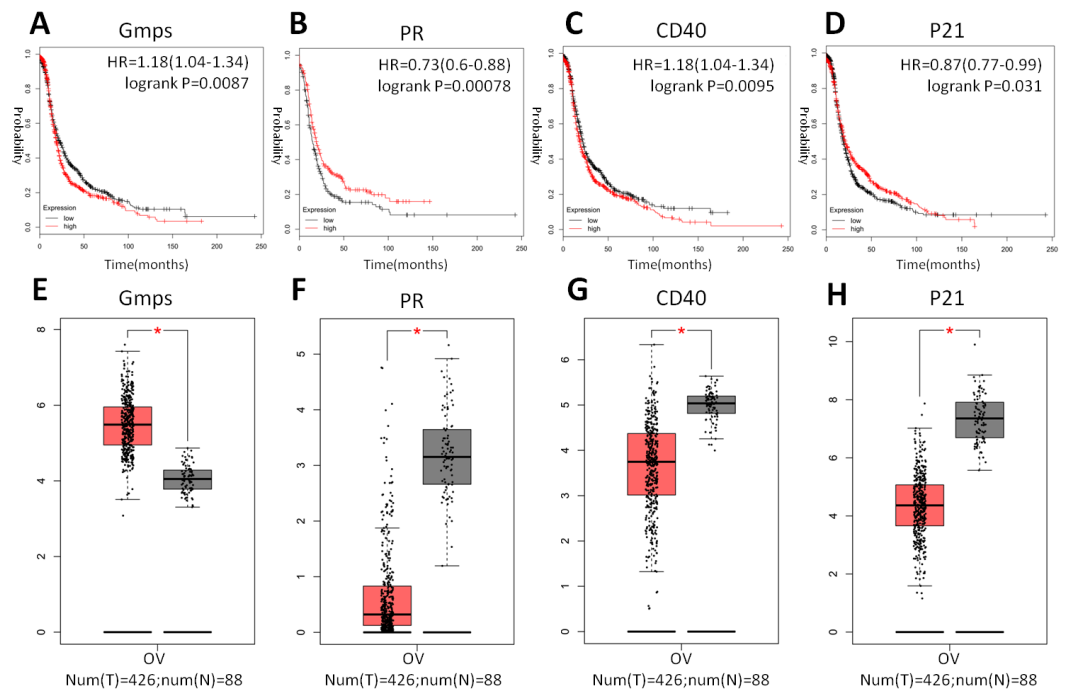


Figure 6 Differential GMPS, PR, CD40, and p21 expression between ovarian cancer and normal tissues and association with recurrence-free survival of ovarian cancer patients. (A–D) The Kaplan–Meier curves of recurrence-free survival (RFS) stratified by altered expression of these four genes. (E–H) Differential expression of GMPS, PR, CD40, and p21 between ovarian cancer and normal tissues.

Full-size DOI: [10.7717/peerj.6301/fig-6](https://doi.org/10.7717/peerj.6301/fig-6)

into cancer cells (Evan & Vousden, 2001). Furthermore, our current study identified a four-gene signature to predict overall survival of ovarian cancer patients. Specifically, GMPS, a guanosine 5'-monophosphate synthase, is an enzyme that converts xanthosine monophosphate to guanosine monophosphate. Thus, GMPS is important in nucleotide biosynthesis for normal cell proliferation and oncogenesis. Reddy's data showed that GMPS in combination of TRIM21 with USP7 formed a molecular cascade that controls p53 stability in response to DNA damage or nucleotide deprivation. Therefore, GMPS is a classical biosynthetic enzyme that promotes cell growth and DNA replication, and is also a key center for p53-restricted cell proliferation (Reddy et al., 2014). In our current study, we found that GMPS was highly expressed in ovary cancer tissues compared with that of non-tumor tissues and that GMPS expression was associated with RFS of patients. This piece of data is novel and has been not reported in literature before. A previous study showed that GMPS was an important p53 repression target in liver cancer cells (Holzer et al., 2017), which further indicates the importance of GMPS in oncogenesis. As we know, p53 is a tumor suppressor protein and can prevent aberrant cell proliferation, which may be through the repression of GMPS activity (Holzer et al., 2017). In addition, PR, as the nuclear receptor, functions to regulate the development and cycle of hormone-responsive tissues, such as the mammary glands and reproductive tract. Several previous studies demonstrated PR expression as a biomarker to predict better prognosis of endometrioid

and high-grade serous ovarian carcinoma (Jonsson et al., 2015; Lee et al., 2005; Lenhard et al., 2012; Sieh et al., 2013), while lost PR expression was associated with advanced stages of ovarian cancer (Feng et al., 2016). Indeed, progesterone and progestin were shown to play a protective role against ovarian carcinogenesis (Edmondson & Monaghan, 2001), and PR expression was a favorable prognostic marker associated with longer progression-free survival in ovarian cancer patients (Tangjitgamol et al., 2009; Van Kruchten et al., 2015; Wong et al., 2007). Our current data confirm these previous data. Furthermore, CD40 is a transmembrane glycoprotein and the member of the tumor necrosis factor receptor superfamily, which can mediate a broad variety of immune and inflammatory responses (Grewal & Flavell, 1998). CD40 is frequently expressed in different immune cells and endothelial and epithelial cells. The binding of CD40 to CD40 ligand was shown to have various physiological and pathological roles in the human body (Grewal & Flavell, 1998; Van Kooten & Banchereau, 2000). A previous study demonstrated that CD40 ligands enhanced the sensitivity of epithelial ovarian cancer cells to cisplatin treatment (Qin et al., 2016). CD40 was highly expressed in ovarian cancer cell lines and tumor samples but not in normal ovarian tissue (Zhou et al., 2012). In our current study, we found elevated CD40 expression in MOSE-II cells compared with MOSE-I cells; however, CD40 expression was reduced in ovarian cancer tissues, which is opposite the findings of a previous study (Zhou et al., 2012). Thus, further study is needed to determine the reason for this discrepancy. In addition, p21 also called as CDKN1A cyclin-dependent kinase inhibitor 1A, functions to regulate cell growth arrest by inhibiting Cdks, which is required for cell cycle transition from the G1 to S phase (Xiong et al., 1993). Through the interaction with the proliferating cell nuclear antigen (PCNA), p21 was able to inhibit DNA replication (Rossig et al., 2001). Our current study showed that p21 was highly expressed in normal tissues but reduced in ovarian cancer tissues, which was associated with better survival of patients, consistent with a previous study (Alves et al., 2018). Indeed, a previous study demonstrated that pyridine derivative-induced ovarian cancer cell senescence occurred through p21 activation (Shang et al., 2018). However, other studies reported that CDKN1A/p21 expression promoted breast cancer and mediated drug resistance (Cheng et al., 2010; Hawthorne et al., 2009), and clinical studies have indicated that high p21 expression was correlated with poor prognosis of gastric and esophageal cancers (Liu et al., 2014; Taghavi et al., 2010). Thus, further study is needed to clarify this discrepancy.

However, our current study does have some limitations; for example, our current study just profiled differentially expressed genes in ovarian cancer and associated them with prognosis of ovarian cancer as well as performed bioinformatical analysis to associate four of them with ovarian cancer progression; however, much more are needed in precise research on their biological functions and role in ovarian cancer development and progression. Furthermore, future validation of these DEGs in ovarian cancer is also needed before any applications to patients.

CONCLUSIONS

Our current study revealed a four-gene signature after profiling a cell model of ovarian cancer progression to predict overall survival and recurrence-free survival in ovarian cancer patients. Future study will verify these data using prospective ovarian cancer patients.

ADDITIONAL INFORMATION AND DECLARATIONS

Funding

This study was supported in part by grants from National Natural Science Foundation of China (No. NSFC81703225) and the Natural Science Foundation of Fujian, China (No.2017J01221). There was no additional external funding received for this study. The funders had no role in study design, data collection and analysis, decision to publish, or preparation of the manuscript.

Grant Disclosures

The following grant information was disclosed by the authors:

Natural Science Foundation of China: NSFC81703225.

Natural Science Foundation of Fujian, China: 2017J01221.

Competing Interests

The authors declare there are no competing interests.

Author Contributions

- Ping Wang performed the experiments, analyzed the data, contributed reagents/materials/analysis tools, prepared figures and/or tables, approved the final draft.
- Zengli Zhang prepared figures and/or tables.
- Yujie Ma contributed reagents/materials/analysis tools.
- Jun Lu and Shuiliang Wang performed the experiments.
- Hu Zhao contributed reagents/materials/analysis tools, authored or reviewed drafts of the paper.
- Jianming Tan conceived and designed the experiments, authored or reviewed drafts of the paper, approved the final draft.
- Bingyan Li conceived and designed the experiments, analyzed the data, authored or reviewed drafts of the paper, approved the final draft.

Animal Ethics

The following information was supplied relating to ethical approvals (i.e., approving body and any reference numbers):

The animal protocol for this study was approved by the Institutional Animal Care and Use Committee (IACUC) of Fuzhou General Hospital (Fujian, China) and followed the regulatory animal care guidelines of the United State National Institute of Health (Bethesda, MD, USA).

Data Availability

The following information was supplied regarding data availability:

The raw measurements are available in the [Supplemental Files](#).

Supplemental Information

Supplemental information for this article can be found online at <http://dx.doi.org/10.7717/peerj.6301#supplemental-information>.

REFERENCES

- Ahmed N, Stenvers KL. 2013. Getting to know ovarian cancer ascites: opportunities for targeted therapy-based translational research. *Frontiers in Oncology* 3:256 DOI 10.3389/fonc.2013.00256.
- Alves MR, e Melo NC, Barros-Filho MC, Do Amaral NS, Silva FIB, Baiocchi Neto G, Soares FA, De Brot Andrade L, Rocha RM. 2018. Downregulation of AGR2, p21, and cyclin D and alterations in p53 function were associated with tumor progression and chemotherapy resistance in epithelial ovarian carcinoma. *Cancer Medicine* 7(7):3188–3199 DOI 10.1002/cam4.1530.
- Bonome T, Lee JY, Park DC, Radonovich M, Pise-Masison C, Brady J, Gardner GJ, Hao K, Wong WH, Barrett JC, Lu KH, Sood AK, Gershenson DM, Mok SC, Birrer MJ. 2005. Expression profiling of serous low malignant potential, low-grade, and high-grade tumors of the ovary. *Cancer Research* 65(22):10602–10612 DOI 10.1158/0008-5472.CAN-05-2240.
- Campbell IG, Russell SE, Choong DY, Montgomery KG, Ciavarella ML, Hooi CS, Cristiano BE, Pearson RB, Phillips WA. 2004. Mutation of the PIK3CA gene in ovarian and breast cancer. *Cancer Research* 64(21):7678–7681 DOI 10.1158/0008-5472.CAN-04-2933.
- Che YL, Luo SJ, Li G, Cheng M, Gao YM, Li XM, Dai JM, He H, Wang J, Peng HJ, Zhang Y, Li WY, Wang H, Liu B, Linghu H. 2015. The C3G/Rap1 pathway promotes secretion of MMP-2 and MMP-9 and is involved in serous ovarian cancer metastasis. *Cancer Letters* 359(2):241–249 DOI 10.1016/j.canlet.2015.01.019.
- Cheng X, Xia W, Yang JY, Hsu JL, Chou CK, Sun HL, Wyszomierski SL, Mills GB, Muller WJ, Yu D, Hung MC. 2010. Activation of p21(CIP1/WAF1) in mammary epithelium accelerates mammary tumorigenesis and promotes lung metastasis. *Biochemical and Biophysical Research Communications* 403(1):103–107 DOI 10.1016/j.bbrc.2010.10.126.
- Earp M, Tyrer JP, Winham SJ, Lin HY, Chornokur G, Dennis J, Aben KKH, Anton-Culver H, Antonenkova N, Bandera EV, Bean YT, Beckmann MW, Bjorge L, Bogdanova N, Brinton LA, Brooks-Wilson A, Bruinsma F, Bunker CH, Butzow R, Campbell IG, Carty K, Chang-Claude J, Cook LS, Cramer DW, Cunningham JM, Cybulski C, Dansonka-Mieszkowska A, Despierre E, Doherty JA, Dork T, Du Bois A, Durst M, Easton DF, Eccles DM, Edwards RP, Ekici AB, Fasching PA, Fridley BL, Gentry-Maharaj A, Giles GG, Glasspool R, Goodman MT, Gronwald J,

- Harter P, Hein A, Heitz F, Hildebrandt MAT, Hillemanns P, Hogdall CK, Hogdall E, Hosono S, Iversen ES, Jakubowska A, Jensen A, Ji BT, Jung AY, Karlan BY, Kellar M, Kiemeny LA, Kiong Lim B, Kjaer SK, Krakstad C, Kupryjanczyk J, Lambrechts D, Lambrechts S, Le ND, Lele S, Lester J, Levine DA, Li Z, Liang D, Lissowska J, Lu K, Lubinski J, Lundvall L, Massuger L, Matsuo K, McGuire V, McLaughlin JR, McNeish I, Menon U, Milne RL, Modugno F, Moysich KB, Ness RB, Nevanlinna H, Odunsi K, Olson SH, Orlow I, Orsulic S, Paul J, Pejovic T, Pelttari LM, Permuth JB, Pike MC, Poole EM, Rosen B, Rossing MA, Rothstein JH, Runnebaum IB, Rzepecka IK, Schernhammer E, Schwaab I, Shu XO, Shvetsov YB, Siddiqui N, Sieh W, Song H, Southey MC, Spiewankiewicz B, Sucheston-Campbell L, Tangen IL, Teo SH, Terry KL, Thompson PJ, Thomsen L, Tworoger SS, Van Altena AM, Vergote I, Vestrheim Thomsen LC, Vierkant RA, Walsh CS, Wang-Gohrke S, Wentzensen N, Whittemore AS, Wicklund KG, Wilkens LR, Woo YL, Wu AH, Wu X, Xiang YB, Yang H, Zheng W, Ziogas A, Lee AW, Pearce CL, Berchuck A, Schildkraut JM, Ramus SJ, Monteiro ANA, Narod SA, Sellers TA, Gayther SA, Kelemen LE, Chenevix-Trench G, Risch HA, Pharoah PDP, Goode EL, Phelan CM. 2018. Variants in genes encoding small GTPases and association with epithelial ovarian cancer susceptibility. *PLOS ONE* 13(7):e0197561 DOI 10.1371/journal.pone.0197561.
- Edmondson RJ, Monaghan JM. 2001. The epidemiology of ovarian cancer. *International Journal of Gynecological Cancer* 11(6):423–429 DOI 10.1046/j.1525-1438.2001.01053.x.
- Evan GI, Vousden KH. 2001. Proliferation, cell cycle and apoptosis in cancer. *Nature* 411(6835):342–348 DOI 10.1038/35077213.
- Feng Z, Wen H, Bi R, Ju X, Chen X, Yang W, Wu X. 2016. A clinically applicable molecular classification for high-grade serous ovarian cancer based on hormone receptor expression. *Scientific Reports* 6:25408 DOI 10.1038/srep25408.
- Flesken-Nikitin A, Hwang CI, Cheng CY, Michurina TV, Enikolopov G, Nikitin AY. 2013b. Ovarian surface epithelium at the junction area contains a cancer-prone stem cell niche. *Nature* 495(7440):241–245 DOI 10.1038/nature11979.
- Flesken-Nikitin A, Hwang C-I, Cheng C-Y, Michurina TV, Enikolopov G, Nikitin AY. 2013a. Ovarian surface epithelium at the junction area contains a cancer-prone stem cell niche. *Nature* 495(7440):241–245 DOI 10.1038/nature11979.
- Force USPST, Grossman DC, Curry SJ, Owens DK, Barry MJ, Davidson KW, Doubeni CA, Epling Jr JW, Kemper AR, Krist AH, Kurth AE, Landefeld CS, Mangione CM, Phipps MG, Silverstein M, Simon MA, Tseng CW. 2018. Screening for ovarian cancer: US preventive services task force recommendation statement. *Jama* 319(6):588–594 DOI 10.1001/jama.2017.21926.
- Franceschini A, Szklarczyk D, Frankild S, Kuhn M, Simonovic M, Roth A, Lin J, Minguez P, Bork P, Von Mering C, Jensen LJ. 2013. STRING v9.1: protein-protein interaction networks, with increased coverage and integration. *Nucleic Acids Research* 41(Database issue):D808–D815 DOI 10.1093/nar/gks1094.
- Gamwell LF, Collins O, Vanderhyden BC. 2012. The mouse ovarian surface epithelium contains a population of LY6A (SCA-1) expressing progenitor cells that

- are regulated by ovulation-associated factors. *Biology of Reproduction* **87**(4):80 DOI [10.1095/biolreprod.112.100347](https://doi.org/10.1095/biolreprod.112.100347).
- Gao J, Aksoy BA, Dogrusoz U, Dresdner G, Gross B, Sumer SO, Sun Y, Jacobsen A, Sinha R, Larsson E, Cerami E, Sander C, Schultz N. 2013.** Integrative analysis of complex cancer genomics and clinical profiles using the cBioPortal. *Science Signaling* **6**(269):pl1 DOI [10.1126/scisignal.2004088](https://doi.org/10.1126/scisignal.2004088).
- Grewal IS, Flavell RA. 1998.** CD40 and CD154 in cell-mediated immunity. *Annual Review of Immunology* **16**:111–135 DOI [10.1146/annurev.immunol.16.1.111](https://doi.org/10.1146/annurev.immunol.16.1.111).
- Gyorffy B, Surowiak P, Budczies J, Lanczky A. 2013.** Online survival analysis software to assess the prognostic value of biomarkers using transcriptomic data in non-small-cell lung cancer. *PLOS ONE* **8**(12):e82241 DOI [10.1371/journal.pone.0082241](https://doi.org/10.1371/journal.pone.0082241).
- Hanahan D, Weinberg RA. 2000.** The hallmarks of cancer. *Cell* **100**(1):57–70 DOI [10.1016/S0092-8674\(00\)81683-9](https://doi.org/10.1016/S0092-8674(00)81683-9).
- Hawthorne VS, Huang WC, Neal CL, Tseng LM, Hung MC, Yu D. 2009.** ErbB2-mediated Src and signal transducer and activator of transcription 3 activation leads to transcriptional up-regulation of p21Cip1 and chemoresistance in breast cancer cells. *Molecular Cancer Research* **7**(4):592–600 DOI [10.1158/1541-7786.MCR-08-0316](https://doi.org/10.1158/1541-7786.MCR-08-0316).
- Holzer K, Drucker E, Roessler S, Dauch D, Heinzmann F, Waldburger N, Eiteneuer EM, Herpel E, Breuhahn K, Zender L, Schirmacher P, Ori A, Singer S. 2017.** Proteomic analysis reveals GMP synthetase as p53 repression target in liver cancer. *American Journal of Pathology* **187**(2):228–235 DOI [10.1016/j.ajpath.2016.09.022](https://doi.org/10.1016/j.ajpath.2016.09.022).
- Jayson GC, Kohn EC, Kitchener HC, Ledermann JA. 2014.** Ovarian cancer. *Lancet* **384**(9951):1376–1388 DOI [10.1016/S0140-6736\(13\)62146-7](https://doi.org/10.1016/S0140-6736(13)62146-7).
- Jonsson JM, Skovbjerg Arildsen N, Malander S, Masback A, Hartman L, Nilbert M, Hedenfalk I. 2015.** Sex steroid hormone receptor expression affects ovarian cancer survival. *Translational Oncology* **8**(5):424–433 DOI [10.1016/j.tranon.2015.09.002](https://doi.org/10.1016/j.tranon.2015.09.002).
- Kurose K, Zhou XP, Araki T, Cannistra SA, Maher ER, Eng C. 2001.** Frequent loss of PTEN expression is linked to elevated phosphorylated Akt levels, but not associated with p27 and cyclin D1 expression, in primary epithelial ovarian carcinomas. *American Journal of Pathology* **158**(6):2097–2106 DOI [10.1016/S0002-9440\(10\)64681-0](https://doi.org/10.1016/S0002-9440(10)64681-0).
- Lee P, Rosen DG, Zhu C, Silva EG, Liu J. 2005.** Expression of progesterone receptor is a favorable prognostic marker in ovarian cancer. *Gynecologic Oncology* **96**(3):671–677 DOI [10.1016/j.ygyno.2004.11.010](https://doi.org/10.1016/j.ygyno.2004.11.010).
- Lenhard M, Tereza L, Heublein S, Ditsch N, Himsl I, Mayr D, Friese K, Jeschke U. 2012.** Steroid hormone receptor expression in ovarian cancer: progesterone receptor B as prognostic marker for patient survival. *BMC Cancer* **12**:553 DOI [10.1186/1471-2407-12-553](https://doi.org/10.1186/1471-2407-12-553).
- Li H, Zeng J, Shen K. 2014.** PI3K/AKT/mTOR signaling pathway as a therapeutic target for ovarian cancer. *Archives of Gynecology and Obstetrics* **290**(6):1067–1078 DOI [10.1007/s00404-014-3377-3](https://doi.org/10.1007/s00404-014-3377-3).

- Liu X, Yu H, Cai H, Wang Y. 2014. Expression of CD24, p21, p53, and c-myc in alpha-fetoprotein-producing gastric cancer: Correlation with clinicopathologic characteristics and survival. *Journal of Surgical Oncology* **109**(8):859–864 DOI [10.1002/jso.23599](https://doi.org/10.1002/jso.23599).
- Lv L, Zhang T, Yi Q, Huang Y, Wang Z, Hou H, Zhang H, Zheng W, Hao Q, Guo Z, Cooke HJ, Shi Q. 2012. Tetraploid cells from cytokinesis failure induce aneuploidy and spontaneous transformation of mouse ovarian surface epithelial cells. *Cell Cycle* **11**(15):2864–2875 DOI [10.4161/cc.21196](https://doi.org/10.4161/cc.21196).
- McCloskey CW, Goldberg RL, Carter LE, Gamwell LF, Al-Hujaily EM, Collins O, Macdonald EA, Garson K, Daneshmand M, Carmona E, Vanderhyden BC. 2014. A new spontaneously transformed syngeneic model of high-grade serous ovarian cancer with a tumor-initiating cell population. *Frontiers in Oncology* **4**:53 DOI [10.3389/fonc.2014.00053](https://doi.org/10.3389/fonc.2014.00053).
- Meinhold-Heerlein I, Bauerschlag D, Hilpert F, Dimitrov P, Sapinoso LM, Orłowska-Volk M, Bauknecht T, Park TW, Jonat W, Jacobsen A, Sehoul J, Luttes J, Krajewski M, Krajewski S, Reed JC, Arnold N, Hampton GM. 2005. Molecular and prognostic distinction between serous ovarian carcinomas of varying grade and malignant potential. *Oncogene* **24**(6):1053–1065 DOI [10.1038/sj.onc.1208298](https://doi.org/10.1038/sj.onc.1208298).
- Qin L, Qiu H, Zhang M, Zhang F, Yang H, Yang L, Jia L, Qin K, Jia L, Dou X, Cheng L, Sang M, Zhang C, Shan B, Zhang Z. 2016. Soluble CD40 ligands sensitize the epithelial ovarian cancer cells to cisplatin treatment. *Biomedicine and Pharmacotherapy* **79**:166–175 DOI [10.1016/j.biopha.2016.01.006](https://doi.org/10.1016/j.biopha.2016.01.006).
- Reddy BA, Van der Knaap JA, Bot AG, Mohd-Sarip A, Dekkers DH, Timmermans MA, Martens JW, Demmers JA, Verrijzer CP. 2014. Nucleotide biosynthetic enzyme GMP synthase is a TRIM21-controlled relay of p53 stabilization. *Molecular Cell* **53**(3):458–470 DOI [10.1016/j.molcel.2013.12.017](https://doi.org/10.1016/j.molcel.2013.12.017).
- Ricci F, Broggini M, Damia G. 2013. Revisiting ovarian cancer preclinical models: implications for a better management of the disease. *Cancer Treatment Reviews* **39**(6):561–568 DOI [10.1016/j.ctrv.2013.01.005](https://doi.org/10.1016/j.ctrv.2013.01.005).
- Roberts PC, Mottillo EP, Baxa AC, Heng HH, Doyon-Reale N, Gregoire L, Lancaster WD, Rabah R, Schmelz EM. 2005. Sequential molecular and cellular events during neoplastic progression: a mouse syngeneic ovarian cancer model. *Neoplasia* **7**(10):944–956 DOI [10.1593/neo.05358](https://doi.org/10.1593/neo.05358).
- Roberts PC, Schmelz EM. 2013. In vitro model of spontaneous mouse OSE transformation. *Methods in Molecular Biology* **1049**:393–408 DOI [10.1007/978-1-62703-547-7_30](https://doi.org/10.1007/978-1-62703-547-7_30).
- Roby KF, Taylor CC, Sweetwood JP, Cheng Y, Pace JL, Tawfik O, Persons DL, Smith PG, Terranova PF. 2000. Development of a syngeneic mouse model for events related to ovarian cancer. *Carcinogenesis* **21**(4):585–591 DOI [10.1093/carcin/21.4.585](https://doi.org/10.1093/carcin/21.4.585).
- Rossig L, Jadidi AS, Urbich C, Badorff C, Zeiher AM, Dimmeler S. 2001. Akt-dependent phosphorylation of p21(Cip1) regulates PCNA binding and proliferation of endothelial cells. *Molecular and Cellular Biology* **21**(16):5644–5657 DOI [10.1128/MCB.21.16.5644-5657.2001](https://doi.org/10.1128/MCB.21.16.5644-5657.2001).

- Saito R, Smoot ME, Ono K, Ruschinski J, Wang PL, Lotia S, Pico AR, Bader GD, Ideker T. 2012. A travel guide to Cytoscape plugins. *Nature Methods* 9(11):1069–1076 DOI 10.1038/nmeth.2212.
- Shang D, Wu Y, Ding Y, Lu Z, Shen Y, Zhu F, Liu H, Zhu C, Tu Z. 2018. Identification of a pyridine derivative inducing senescence in ovarian cancer cell lines via P21 activation. *Clinical and Experimental Pharmacology and Physiology* 45(5):452–460 DOI 10.1111/1440-1681.12891.
- Siegel RL, Miller KD, Jemal A. 2018. Cancer statistics, 2018. *CA: a Cancer Journal for Clinicians* 68(1):7–30 DOI 10.3322/caac.21442.
- Sieh W, Kobel M, Longacre TA, Bowtell DD, deFazio A, Goodman MT, Hogdall E, Deen S, Wentzensen N, Moysich KB, Brenton JD, Clarke BA, Menon U, Gilks CB, Kim A, Madore J, Fereday S, George J, Galletta L, Lurie G, Wilkens LR, Carney ME, Thompson PJ, Matsuno RK, Kjaer SK, Jensen A, Hogdall C, Kalli KR, Fridley BL, Keeney GL, Vierkant RA, Cunningham JM, Brinton LA, Yang HP, Sherman ME, Garcia-Closas M, Lissowska J, Odunsi K, Morrison C, Lele S, Bshara W, Sucheston L, Jimenez-Linan M, Driver K, Alsop J, Mack M, McGuire V, Rothstein JH, Rosen BP, Bernardini MQ, Mackay H, Oza A, Wozniak EL, Benjamin E, Gentry-Maharaj A, Gayther SA, Tinker AV, Prentice LM, Chow C, Anglesio MS, Johnatty SE, Chenevix-Trench G, Whittemore AS, Pharoah PD, Goode EL, Huntsman DG, Ramus SJ. 2013. Hormone-receptor expression and ovarian cancer survival: an Ovarian Tumor Tissue Analysis consortium study. *The Lancet Oncology* 14(9):853–862 DOI 10.1016/S1470-2045(13)70253-5.
- Taghavi N, Biramijamal F, Sotoudeh M, Moaven O, Khademi H, Abbaszadegan MR, Malekzadeh R. 2010. Association of p53/p21 expression with cigarette smoking and prognosis in esophageal squamous cell carcinoma patients. *World Journal of Gastroenterology* 16(39):4958–4967 DOI 10.3748/wjg.v16.i39.4958.
- Tangjitgamol S, Manusirivithaya S, Khunnarong J, Jesadapatarakul S, Tanwanich S. 2009. Expressions of estrogen and progesterone receptors in epithelial ovarian cancer: a clinicopathologic study. *International Journal of Gynecological Cancer* 19(4):620–627 DOI 10.1111/IGC.0b013e3181a44b62.
- Tomczak K, Czerwinska P, Wiznerowicz M. 2015. The Cancer Genome Atlas (TCGA): an immeasurable source of knowledge. *Contemporary Oncology* 19(1A):A68–A77 DOI 10.5114/wo.2014.47136.
- Torre LA, Trabert B, DeSantis CE, Miller KD, Samimi G, Runowicz CD, Gaudet MM, Jemal A, Siegel RL. 2018. Ovarian cancer statistics, 2018. *A Cancer Journal for Clinicians* DOI 10.3322/caac.21456.
- Urban RR, Pappas TC, Bullock RG, Munroe DG, Bonato V, Agnew K, Goff BA. 2018. Combined symptom index and second-generation multivariate biomarker test for prediction of ovarian cancer in patients with an adnexal mass. *Gynecologic Oncology* 150(2):318–323 DOI 10.1016/j.ygyno.2018.06.004.
- Urzua U, Best L, Munroe DJ. 2010. Microarray proteomic analysis discriminates tumorigenic mouse ovarian surface epithelial cells of divergent aggressive potential. *Molecular BioSystems* 6(12):2521–2528 DOI 10.1039/c005220e.

- Van Kooten C, Banchereau J. 2000.** CD40-CD40 ligand. *Journal of Leukocyte Biology* 67(1):2–17 DOI [10.1002/jlb.67.1.2](https://doi.org/10.1002/jlb.67.1.2).
- Van Kruchten M, Van der Marel P, De Munck L, Hollema H, Arts H, Timmer-Bosscha H, De Vries E, Hospers G, Reyners A. 2015.** Hormone receptors as a marker of poor survival in epithelial ovarian cancer. *Gynecologic Oncology* 138(3):634–639 DOI [10.1016/j.ygyno.2015.06.032](https://doi.org/10.1016/j.ygyno.2015.06.032).
- Wong KK, Lu KH, Malpica A, Bodurka DC, Shvartsman HS, Schmandt RE, Thornton AD, Deavers MT, Silva EG, Gershenson DM. 2007.** Significantly greater expression of ER, PR and ECAD in advanced-stage low-grade ovarian serous carcinoma as revealed by immunohistochemical analysis. *International Journal of Gynecological Pathology* 26(4):404–409 DOI [10.1097/pgp.0b013e31803025cd](https://doi.org/10.1097/pgp.0b013e31803025cd).
- Xiong Y, Hannon GJ, Zhang H, Casso D, Kobayashi R, Beach D. 1993.** p21 is a universal inhibitor of cyclin kinases. *Nature* 366(6456):701–704 DOI [10.1038/366701a0](https://doi.org/10.1038/366701a0).
- Zhou Y, He J, Gou LT, Mu B, Liao WC, Ma C, Tang P, Zhou SJ, Zhou YJ, Yang JL. 2012.** Expression of CD40 and growth-inhibitory activity of CD40 agonist in ovarian carcinoma cells. *Cancer Immunology and Immunotherapy* 61(10):1735–1743 DOI [10.1007/s00262-011-1194-0](https://doi.org/10.1007/s00262-011-1194-0).