

RESEARCH ARTICLE

Open Access

# Molecular profiling of the developing mouse axial skeleton: a role for *Tgfbr2* in the development of the intervertebral disc

Philip Sohn<sup>1</sup>, Megan Cox<sup>1</sup>, Dongquan Chen<sup>2,3</sup>, Rosa Serra<sup>1\*</sup>

## Abstract

**Background:** Very little is known about how intervertebral disc (IVD) is formed or maintained. Members of the TGF- $\beta$  superfamily are secreted signaling proteins that regulate many aspects of development including cellular differentiation. We recently showed that deletion of *Tgfbr2* in *Col2a* expressing mouse tissue results in alterations in development of IVD annulus fibrosus. The results suggested TGF- $\beta$  has an important role in regulating development of the axial skeleton, however, the mechanistic basis of TGF- $\beta$  action in these specialized joints is not known. One of the hurdles to understanding development of IVD is a lack of known markers. To identify genes that are enriched in the developing mouse IVD and to begin to understand the mechanism of TGF- $\beta$  action in IVD development, we undertook a global analysis of gene expression comparing gene expression profiles in developing mouse vertebrae and IVD. We also compared expression profiles in tissues from wild type and *Tgfbr2* mutant mice as well as in sclerotome cultures treated with TGF- $\beta$  or BMP4.

**Results:** Lists of IVD and vertebrae enriched genes were generated. Expression patterns for several genes were verified either through in situ hybridization or literature/database searches resulting in a list of genes that can be used as markers of IVD. Cluster analysis using genes listed under the Gene Ontology terms multicellular organism development and pattern specification indicated that mutant IVD more closely resembled vertebrae than wild type IVD. We also generated lists of genes regulated by TGF- $\beta$  or BMP4 in cultured sclerotome. As expected, treatment with BMP4 resulted in up-regulation of cartilage marker genes including *Acan*, *Sox 5*, *Sox6*, and *Sox9*. In contrast, treatment with TGF- $\beta$ 1 did not regulate expression of cartilage markers but instead resulted in up-regulation of many IVD markers including *Fmod* and *Adamtsl2*.

**Conclusions:** We propose TGF- $\beta$  has two functions in IVD development: 1) to prevent chondrocyte differentiation in the presumptive IVD and 2) to promote differentiation of annulus fibrosus from sclerotome. We have identified genes that are enriched in the IVD and regulated by TGF- $\beta$  that warrant further investigation as regulators of IVD development.

## Background

The vertebral column develops from somites (Reviewed in [1-3]). In response to signals from the notochord and floor plate of the neural tube, the maturing somites will undergo a dorsal-ventral compartmentalization establishing the dermamyotome and sclerotome, the latter forming the future axial skeleton. The ventral part of the sclerotome gives rise to the vertebral bodies and IVD [4]. Due to resegmentation of sclerotome during

the formation of the vertebrae, each vertebrae will eventually form from the caudal portion of one somite and the rostral portion of the adjacent somite [5]. The IVD will form at the border of the rostral and caudal domains [6]. IVD are derived from both sclerotome and notochord [7-9]. The outer layer of the IVD, the annulus fibrosus (AF) is derived from sclerotome and provides the structural properties of the IVD. As the vertebral bodies undergo chondrogenesis, notochord cells are removed from the vertebral region and expand into the IVD region to initially form the nucleus pulposus (NP), the central portion of the IVD [10]. TGF- $\beta$ 3 is

\* Correspondence: rserra@uab.edu

<sup>1</sup>Department of Cell Biology, University of Alabama at Birmingham, Birmingham AL, USA

one of the earliest markers of the developing IVD within the sclerotome [11,12].

Members of the TGF- $\beta$  superfamily are secreted signaling molecules that regulate many aspects of cell physiology (Reviewed in [13-15]. The family includes three TGF- $\beta$  isoforms (TGF- $\beta$ 1, 2, and 3), the Activins and Inhibins, Growth and Differentiation Factors (GDFs), and the Bone Morphogenetic Proteins (BMPs). TGF- $\beta$ s signal through heteromeric serine/threonine kinase receptors. The current model is that TGF- $\beta$  binds to the TGF- $\beta$  type II receptor (Tgfr2) on the cell surface [16]. Tgfr2 is then able to recruit the type I receptor (Tgfr1) to form a heterotetrameric complex. Tgfr2 which is a constitutively active kinase, phosphorylates the type I receptor, activating the type I serine/threonine kinase. Downstream targets of Tgfr1 then transduce the signal to the nucleus.

All three isoforms of TGF- $\beta$  are expressed in the developing mouse axial skeleton in distinct and overlapping patterns [11,12,17,18]. Tgfb1 mRNA is localized to intersegmental cells at E12.5 days. By E16.5 days, Tgfb1 mRNA is localized to the ossification centers and perichondrium of vertebrae. At E12.5 days, Tgfb2 mRNA is expressed in all prevertebral segments with the highest levels of expression in the thoracic sclerotome. Tgfb3 mRNA is also expressed in all prevertebral segments marking the location of the future IVD and later becoming restricted to the perichondrium and outer AF of the IVD [11,12]. A systematic study of the expression pattern of the TGF- $\beta$  receptors during mouse vertebral development has not been reported; however, expression has been detected in the somite and IVD [18-21]. Tgfr2 is expressed in the adult AF. A decrease in expression is correlated with aging and degeneration of the IVD [22].

The role and necessity of members of the TGF- $\beta$  superfamily in specific aspects of spinal development and pathology is most clearly illustrated in mice and humans with mutations or targeted deletions in their respective genes [23,24]. Previously, we showed that deletion of Tgfr2 in Col2a expressing sclerotome resulted in defects in development of the vertebrae and the IVD [25,26]. Specifically, alterations in the AF were detected. The boundary between the IVD and vertebral body was not clearly demarcated and Fibromodulin (Fmod) expression was reduced while expression of Type II collagen splice variant B (Col2; [27]) and staining with peanut agglutinin were increased. The results suggested that TGF- $\beta$  was required to promote and/or maintain the IVD during development. TGF- $\beta$  also appears to have a role in maintaining the adult IVD. Polymorphisms within the human Tgfb1 gene have a weak but significant association with Ankylosing Spondylitis and the T29C polymorphism in the Tgfb1 gene is

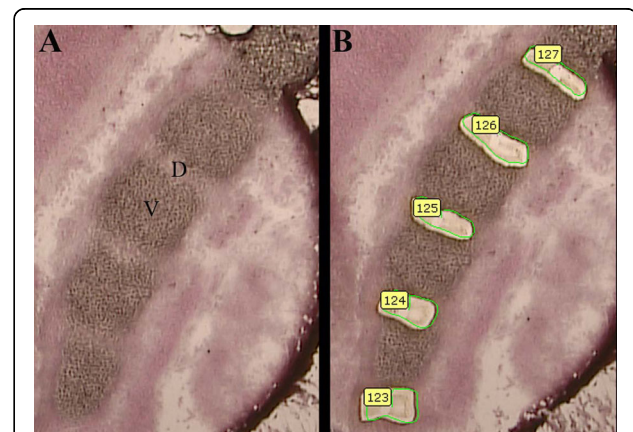
associated with the genetic susceptibility to Spinal Osteophytosis [28,29]. Furthermore, a functional SNP in Cartilage Intermediate Layer Protein (CLIP) is associated with lumbar disc disease. CLIP was shown to co-localize with TGF- $\beta$  in the IVD and the susceptibility-associated allele showed increased binding to TGF- $\beta$  and inhibited TGF- $\beta$  signaling [30].

Very little is known about the molecular mechanisms that govern development of the IVD. One of the barriers to understanding how the IVD develops is a lack of markers to distinguish developing IVD from the cartilage of the vertebrae. In this study, we used laser microdissection and microarray technology to identify genes whose expression was enriched in the developing IVD relative to the adjacent vertebrae. We then used clustering analysis of gene expression profiles in mutant and control vertebrae and IVD to show that in the absence of Tgfr2, IVD molecularly starts to resemble vertebrae. We then show that treatment of sclerotome with TGF- $\beta$  results in up-regulation of many IVD enriched genes. Together the data suggest that TGF- $\beta$  prevents chondrocyte differentiation in the presumptive IVD and promotes differentiation of the AF from sclerotome.

## Results

### Identification of IVD enriched genes

To identify genes that are enriched in the presumptive IVD relative to the presumptive vertebral body, we used laser capture microdissection followed by microarray analysis. RNA was collected from IVD and vertebrae that were microdissected from the lumbar region of E13.5 day mouse embryos (Figure 1). At this stage, we could just begin to distinguish the presumptive IVD



**Figure 1 Laser Microdissection.** Laser Capture Microdissection (LCM) was carried out using a Zeiss/PALM Microbeam Instrument. Lumbar region IVD (D, shown) and vertebrae (V) were microdissected from frozen sections of E13.5 day embryos. (A) shows before and (B) shows after microdissection of IVD. The green circles show the area that was designated for laser cutting.

from the adjacent developing cartilage. In addition, the notochord was just beginning to expand into the presumptive IVD region. Microscopically, IVD samples that were collected contained primarily presumptive AF tissue with only a small amount of notochord/NP. Tissue was microdissected from several separate Cre-negative and Cre+Tgfr2<sup>loxP/loxP</sup> embryos. After isolation and quality control testing of the RNA we had 3 biological replicates from Cre-negative IVD and vertebrae and Tgfr2 mutant vertebrae. We had four biological replicates of Tgfr2 mutant IVD. Each sample was amplified and labelled separately then hybridized to Affymetrix Mouse 430 2.0 GeneChip Arrays (13 arrays total).

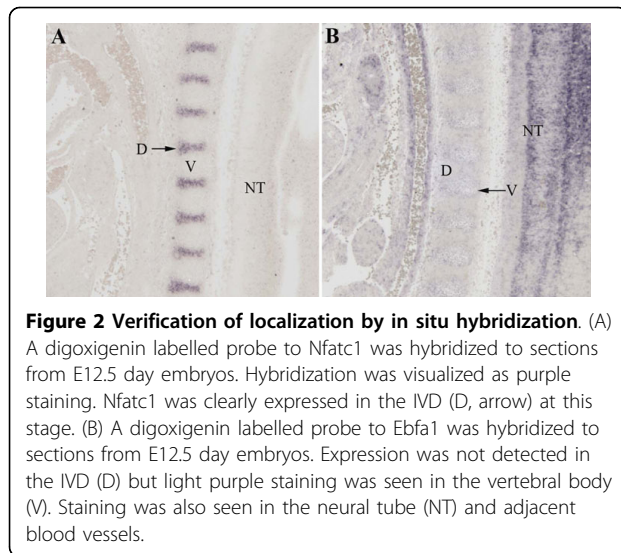
Lists of presumptive IVD and vertebrae-enriched genes were generated by comparing gene expression in wild type (Cre-negative) IVD and vertebrae (Table 1 and additional file 1: supplemental table S1 and additional file 2: supplemental table S2). A total of 263 genes were found enriched in the IVD (additional file 1: supplemental table S1), that is, after normalization and application of statistical cut offs (ANOVA  $p < 0.05$ ), expression of these genes was 2-fold higher in the IVD than in the vertebrae. One hundred and forty one vertebrae enriched genes were identified (additional file 2: supplemental table S2). Genes whose preferential expression in the IVD was verified either by literature/database search or in situ hybridization (Figure 2) are shown in Table 1. The gene expression databases searched were the Gene Expression Database (GXD) at Mouse Genome Informatics (MGI; <http://www.informatics.jax.org>) and the Genepaint database (<http://www.genepaint.org>; [31]). In situ hybridization of Nfatc1, an IVD enriched gene, and Ebf1, a vertebrae enriched gene, are shown in Figure 2. Table 1 thus provides a list of a number of genes that can be used as markers to distinguish developing IVD from vertebrae. The genes include those involved in regulation of the cytoskeleton, extracellular matrix and adhesion, growth factors and regulators of growth factor function, signal transduction, and regulation of transcription. As expected, Tgfb3, was identified in this screen as an IVD enriched gene [11,12].

#### Effects of losing Tgfr2 on IVD development

Previously, we generated mice in which Tgfr2 was deleted using Cre expressed under the control of the *Col2a* promoter. The mice had defects in development of the IVD [25,26]. Specifically, the expression of Fmod, an IVD marker, was reduced and expression of cartilage markers was increased suggesting one of the roles of Tgfr2 is to prevent chondrocyte differentiation in the AF of the presumptive IVD. Here, we used microarray analysis to compare molecular profiles of normal and mutant IVD to see if we could confirm and extend the

**Table 1 IVD enriched, verified genes.**

Probe Set ID	Gene Symbol	Fold Difference	Reference
<b>Cytoskeleton</b>			
1434326_x_at	Coro2b	3.58	[31]
1456312_x_at	Gsn	2.08	[31]
<b>Extracellular matrix and adhesion</b>			
1429214_at	Adamtsl2	2.45	[66]
1448590_at	Col6a1	4.57	[31]
1452250_a_at	Col6a2	3.77	[31]
1426947_x_at		4.11	
1424131_at	Col6a3	4.04	[31]
1427168_a_at	Col14a1	2.84	[67]
1428455_at		2.85	
1436965_at	Emilin3	3.60	[68]
1416164_at	Fbln5	2.79	[69]
1450728_at	Fjx1	2.2	[70]
1415939_at	Fmod	2.72	[42]
1437324_x_at		2.46	
1437685_x_at		2.32	
1437718_x_at		2.35	
1434210_s_at	Lrig1	3.55	[31]
1449893_a_at		4.85	
1421694_a_at	Vcan	2.45	[71]
1427256_at		2.35	
1433043_at		2.09	
<b>Growth factors and regulators</b>			
1448421_s_at	Aspn	8.75	[72]
1416652_at		6.04	
1449545_at	Fgf18	2.5	[73]
1419139_at	Gdf5	8.45	[74]
1422053_at	Inhba	4.29	[75]
1417455_at	Tgfb3	2.63	[11]
1425425_a_at	Wif1	7.82	[31]
1448594_at	Wisp1	2.55	[31]
1448593_at		2.81	
<b>Signal transduction</b>			
1434034_at	Cerk	2.03	[31]
1448830_at	Dusp1	3.57	[31]
<b>Transcription factors</b>			
1433939_at	Aff3	2.20	[76]
1440244_at	Erg	2.91	[58]
1437247_at	Fosl2	6.34	[31]
1434939_at	Foxf1a	2.01	[77]
1418220_at	Foxf2	3.04	[77]
1417621_at	Nfatc1	3.04	Figure 2
1428479_at		4.00	
1449359_at	Pax1	3.04	[4]
1421246_at	Pax9	2.32	[4]
1434286_at	Trps1	3.87	[78]
1438214_at		2.46	



previous findings. Two hundred and eleven genes were found to be either up-regulated or down-regulated in the E13.5 presumptive IVD after deletion of *Tgfb2* (additional file 3: supplemental table S3). Several of the IVD markers that were identified in Table 1 and additional file 1: supplemental table S1 were down-regulated in the mutant IVD relative to the controls (Table 2). Likewise, several genes normally enriched in the vertebrae (additional file 2: supplemental table S2) were up-regulated in the *Tgfb2*-mutant IVD (Table 3). We confirmed the previous results showing down-regulation of *Fmod* in the mutant IVD and extended this finding to show down-regulation of other ECM IVD enriched genes including *Col6* and *Col14*. *Asporin* (*Asp*), which has been associated with lumbar disc disease in humans [32], was down-regulated in mutant IVD. *Trps1*, a transcription factor associated with the skeletal defects of Trichorhinophalangeal Syndrome [33], was also down-regulated in mutant IVD.

A more global analysis of differences in normal and mutant IVD was provided by Gene Ontology (GO)

**Table 2 Selected IVD enriched genes that are down-regulated in the IVD by deletion of *Tgfb2*.**

<i>Arhgap24</i>	<i>Col14a</i>	<i>Fmod</i>	<i>Hhip</i>	<i>Trps1</i>
<i>Asp</i>	<i>D18Ert653e</i>	<i>GDF5</i>	<i>Lsamp</i>	<i>Wif1</i>
<i>Col6a1</i>	<i>Erg</i>	<i>Gna14</i>	<i>Ogn</i>	

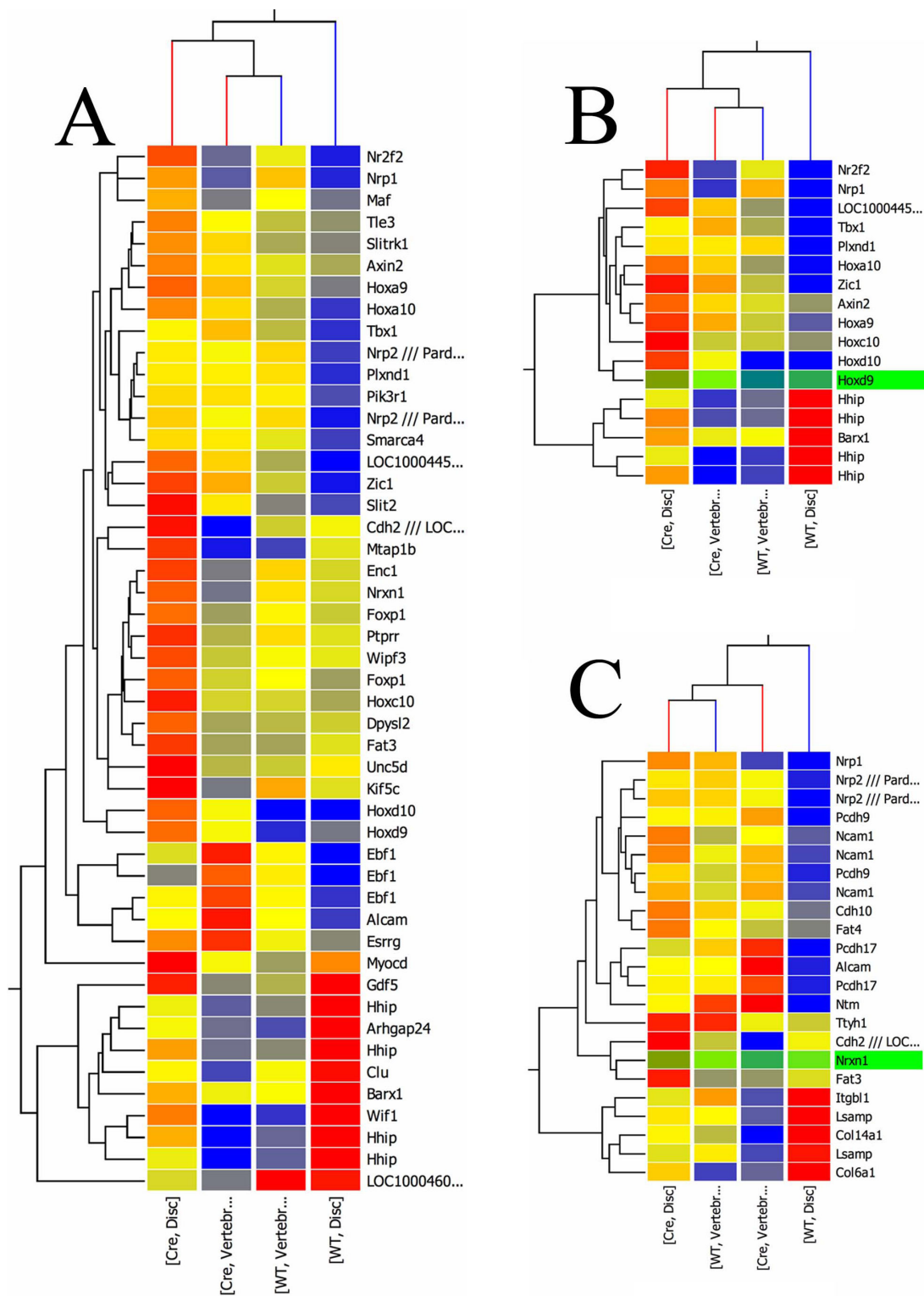
**Table 3 Selected vertebrae enriched genes that are up-regulated in *Tgfb2*-deleted IVD.**

<i>Alcam</i>	<i>Dtna</i>	<i>Pcdh17</i>
<i>Asb4</i>	<i>Ebf1</i>	<i>Pik3r1</i>
<i>Bmper</i>	<i>Pcdh9</i>	<i>Prkg2</i>

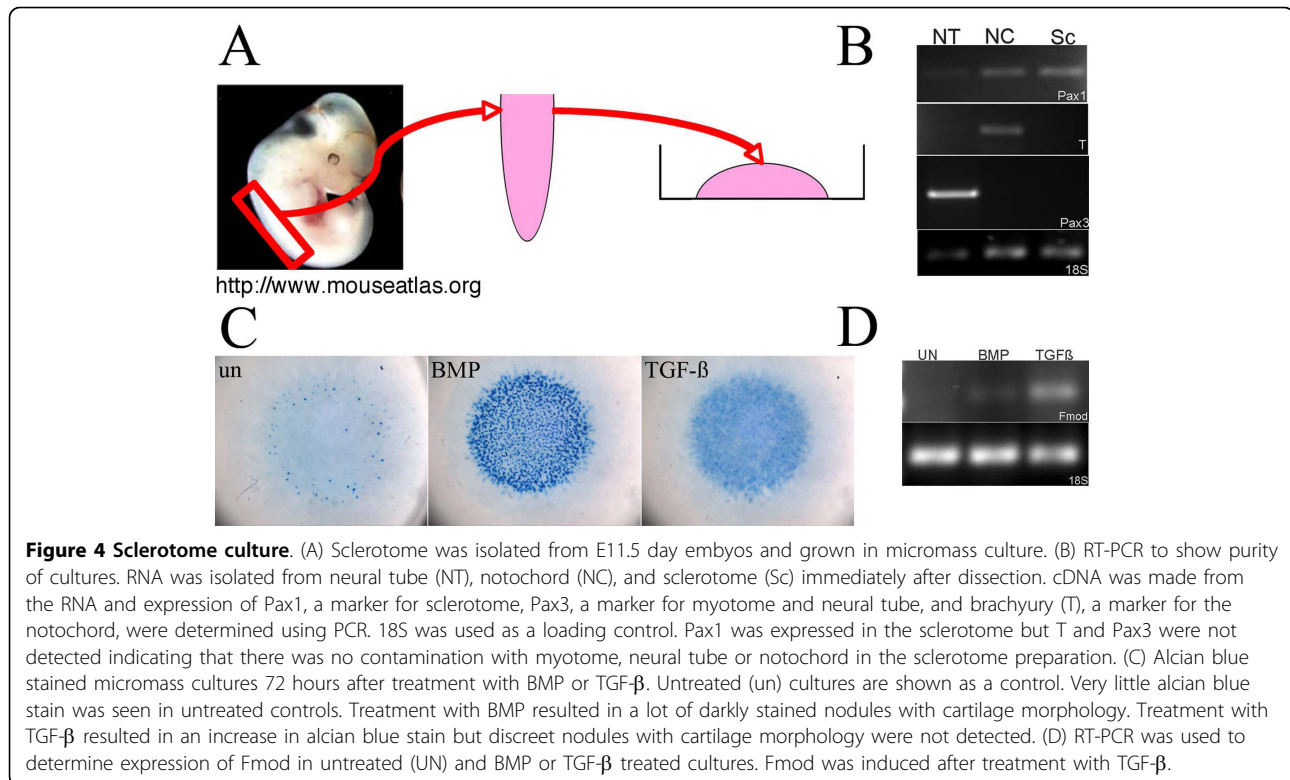
Analysis and hierarchical cluster analysis. First GO analysis indicated that mutations in *Tgfb2* resulted in significant alterations in the IVD in genes associated with development of multicellular organisms, which also included a subset of genes associated with limb development. There are no specific GO terms to define development in the axial skeleton. Genes associated with patterning and cell adhesion were also altered. Hierarchical clustering was used to sort three lists of genes with the GO terms multicellular organism development, pattern specification, and cell adhesion (Figure 3). This analysis clusters conditions that are molecularly most similar together. When genes under the general term of multicellular organism development were used for the cluster analysis, wild type and mutant vertebrae sorted closest together indicating that overall they were molecularly very similar. Mutant IVD clustered closer to the vertebrae samples (Figure 3A). Similar results were obtained for genes under the GO term pattern specification (Figure 3B). In contrast, if the experiment was clustered based on cell adhesion related genes, both IVD and vertebrae were affected so that wild type and mutant IVD did not cluster together and wild type and mutant vertebrae did not cluster together either (Figure 3C). The results support the model in which development and patterning is altered in *Tgfb2*-mutant IVD so that it more closely resembles vertebrae than normal IVD.

#### TGF- $\beta$ treated sclerotome preferentially expresses IVD enriched genes

Next, we wanted to find genes that were potentially directly regulated by TGF- $\beta$  in sclerotome and determine if TGF- $\beta$  treated sclerotome acquired characteristics of IVD. To this end, we set up micromass cultures of sclerotome cells dissected from E11.5 day wild type embryos (Figure 4A). This culture system is similar to that commonly used for embryonic limb mesenchyme [34,35]. To determine if there was contamination from other cell layers, for example the myotome, we isolated RNA from the freshly dissected sclerotome as well as the notochord, and neural tube that were left after the dissection. Marker gene expression was used to determine the quality of the dissection (Figure 4B). *Pax1* is expressed in sclerotome [4], *Pax3* is expressed in the myotome and in the dorsal neural tube [36], and *brachyury* (*T*) is expressed in the notochord [37]. In the sclerotome sample, *Pax1* was expressed at a high level, as expected. There was little to no expression of *Pax3* indicating very little myotome or neural tube contamination in the dissected tissue. The very low level of expression of *Pax1* in the notochord and neural tube samples indicates that a small amount of sclerotome was left behind during the dissection.



**Figure 3 Hierarchical clustering analysis.** Hierarchical clustering using gene lists containing the GO term multicellular organism development (A), patterning (B), or cell adhesion (C). Red indicates highly expressed genes relative to blue, which represents lower expression. When clustered on the relevant gene lists, mutant IVD (Cre, Disc) clusters with mutant (Cre, Vertebrae) and control (WT, Vertebrae) vertebrae. The condition WT, Disc clusters separately.



Cultures were grown in absence of growth factors or in the presence of 50 ng BMP4/ml or 5 ng TGF- $\beta$ 1/ml. After 72 hours in culture, cells were stained with alcian blue (Figure 4C). Cells grown in the absence of growth factors demonstrated a low number of alcian blue stained nodules with similar morphology to the cartilage nodules found in cultures of limb mesenchyme. As expected, treatment with BMP4 resulted in an increase in the number of Alcian blue stained nodules with cartilage morphology [38-40]. Treatment with TGF- $\beta$  resulted in a different response. Alcian blue staining was present throughout the entire culture but not in discreet nodules. Previously, it was shown that C3H10T1/2 cells, immortalized mesenchymal cells, treated with TGF- $\beta$  demonstrate a similar response [41]. Furthermore, treatment with TGF- $\beta$  resulted in increased levels of Fmod mRNA, a previously known marker for IVD (Figure 4D; [42] and Table 1).

Since the TGF- $\beta$  treated micromass cultures expressed Fmod and did not demonstrate typical cartilage morphology, we next used microarray analysis to test the hypothesis that TGF- $\beta$  could promote AF differentiation from sclerotome cells. Sclerotome cultures were set up and left untreated or treated with 5 ng TGF- $\beta$ 1/ml or 50 ng BMP4/ml for 8 hours at which time RNA was extracted. The experiment was set up three separate times so that we would have three biological replicates of each condition. After quality control testing of the RNA, each sample was amplified and labelled separately

then hybridized to Affymetrix Mouse 430 2.0 GeneChip Arrays (9 arrays total).

Gene list for TGF- $\beta$  regulated and BMP regulated genes were generated (Table 4, 5, additional file 4: supplemental table S4 and additional file 5: supplemental table S5). After normalization and statistical analysis, 281 genes that were either 2 fold up- or down-regulated by TGF- $\beta$  were identified (additional file 4: supplemental table S4). Four hundred and forty eight BMP regulated genes were identified (additional file 5: supplemental table S5). Many known cartilage markers including Sox5, Sox6, Sox 9, and Aggrecan (Acan), were up-regulated by BMP (Table 5). In contrast, TGF- $\beta$  did not up-regulate any of these known cartilage markers. Instead, treatment with TGF- $\beta$  up-regulated many genes that were enriched in the developing IVD, including Fmod and Adamts2 (Table 4). It is also interesting to note that many vertebrae enriched genes were down-regulated by TGF- $\beta$  including Maf, a protein known to interact with Sox9 to regulate cartilage gene expression [43]. In addition, at least two tendon markers, Scx and Mxk, were regulated by TGF- $\beta$ . It was recently shown that TGF- $\beta$  is also required for normal tendon development [44]. Semiquantitative RT-PCR (Figure 5) and real time PCR (not shown) were used to verify regulation by TGF- $\beta$  of a subset of genes. As seen in the array data, TGF- $\beta$  up-regulated Adamts2 as well as the transcription factors Bhlhe40, Erg, Mxk, Nfatc1, and Scx. TGF-

**Table 4 Selected genes regulated by TGF- $\beta$  in micromass cultures 2-fold,  $p < 0.05$ .**

Probe set ID	Gene Symbol	Fold Difference	Direction	Localization	Reference
<b>Extracellular matrix and adhesion</b>					
1439827_at	Adamts12	4.38	up	IVD	Table 1
1450627_at	Ank	2.07	up	IVD	[79]
1420569_at	Chad	6.24	up	V (end plate)	[31]
1457296_at	Cilp	3.25	up	IVD	[30]
1416164_at	Fbln5	2.47	up	IVD	Table 1
1422733_at	Fjx1	2.55		IVD	Table 1
1450728_at		2.36	up		
1438966_x_at	Fmod	5.07	up	IVD	Table 1
1456084_x_at		5.01			
1415939_at		5.23			
1437324_x_at		5.77			
1437685_x_at		4.57			
1437718_x_at		5.27			
1434510_at	Papss2	2.02	up	V	[80]
1435603_at	Sned1	6.04	down	V	Table S2
<b>Growth factors and regulators</b>					
1449545_at	Fgf18	4.41	up	IVD	Table 1
1421365_at	Fst	2.20	up	IVD	[75]
1438251_x_at	Htra1	3.06	up	IVD	[81]
1421844_at	Il1rap	2.23	up	IVD	Table S1
1448593_at	Wispl	2.42	up	IVD	Table 1
1448594_at		2.64			
<b>Signal transduction</b>					
1423422_at	Asb4	2.14	down	V	Table S2
1433919_at		2.26			
<b>Transcription factors</b>					
1418025_at	Bhlhe40	2.42	up	IVD	[82]
1416302_at	Ebf1	2.47	down	V	Table S2
1416301_a_at		2.06			
1448293_at		2.37			
1440244_at	Erg	2.11	up	IVD	Table 1
1456786_at	Ldb2	2.32	down	V	Table S2
1435828_at	Maf	4.72	down	V	[83]
1437473_at		3.05			
1447849_s_at		4.23			
1456060_at		4.26			
1437492_at	Mkx	2.45	up	IVD, Tendon	[84]
1417621_at	Nfatc1	3.2	up	IVD	Table 1
1428479_at		2.71			
1428983_at	Scx	4.03	up	Tendon	[85]
<b>Unknown function</b>					
1427182_s_at	D18Ert653e	3.15	up	IVD	Table S1
1452343_at		2.67			
1441977_at	9630023C09Rik	2.49	down	V	Table S2

IVD = intervertebral disc annulus, V = vertebral cartilage, Table S1 = additional file 1: supplemental table S1, Table S2 = additional file 2: supplemental table S2.

**Table 5 Selected genes regulated by BMP4 in micromass cultures 2-fold p < 0.05.**

Probe set ID	Gene Symbol	Fold Difference	Direction	Localization	Reference
<b>Cytoskeleton</b>					
1434326_x_at	Coro2b	2.46	down	IVD	Table 1
<b>Extracellular matrix and adhesion</b>					
1449827_at	Acan	3.71	up	V	[71]
1424131_at	Col6a3	3.03	down	IVD	Table 1
1421987_at	Papss2	6.42	up	V	[80]
1434510_at		9.33			
1421989_s_at		7.30			
<b>Growth factors and regulators</b>					
1429273_at	Bmper	2.70	up	V	Table S2
1449545_at	Fgf18	6.52	down	IVD	Table 1
1419139_at	Gdf5	2.43	down	IVD	Table 1
1450704_at	lhh	4.80	up	V	[86]
1428853_at	Ptch1	2.15	up	V (perichondrium)	[31]
<b>Transcription factors</b>					
1448601_s_at	Msx1	2.89	up	DM	[87]
1423500_a_at	Sox5	2.35	up	V	[88]
1432189_a_at		2.02			
1455535_at		2.12			
1427677_a_at	Sox6	2.23	up	V	[88]
1447655_x_at		2.17			
1424950_at	Sox9	3.36	up	V	Table S2
1451538_at		2.89			

DM = dorsal trunk mesenchyme, IVD = intervertebral disc annulus, V = vertebrae cartilage, Table S1 = additional file 1: supplemental table S1, Table S2 = additional file 2: supplemental table S2.

$\beta$  treatment resulted in down regulation of the transcription factors *Ebf1* and *Maf*.

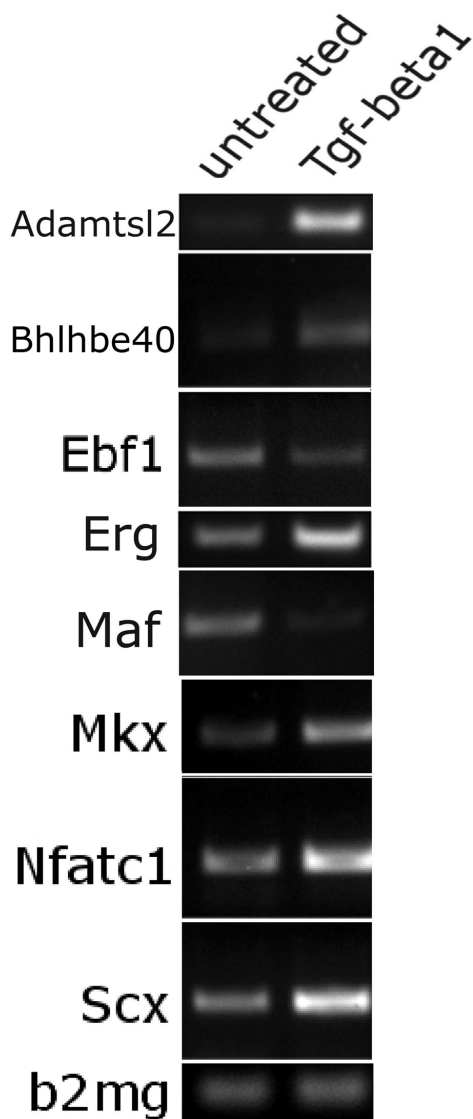
Scatterplot analysis was used to give a more global analysis of the molecular profile of TGF- $\beta$  treated sclerotome (Figure 6). First, the list of TGF- $\beta$  up-regulated genes was superimposed on the experiments describing differential expression of genes in the wild type IVD versus the wild type vertebrae (Figure 6A). In this plot, genes preferentially expressed in the IVD are represented as dots below the center line, with high significance of difference below the outer line. Overall the genes that are up-regulated by TGF- $\beta$  were skewed toward expression in the IVD supporting the hypothesis that TGF- $\beta$  can promote IVD phenotype at the molecular level. Next, the list of genes that are preferentially expressed in the IVD was superimposed on the experiment describing genes that are regulated by TGF- $\beta$  in sclerotome (Figure 6B). In this case, dots above the center line represent genes that are up-regulated by TGF- $\beta$  and genes below the line are down-regulated by TGF- $\beta$ . There were more genes in the IVD that were up-regulated than down-regulated by TGF- $\beta$ . In contrast, if the list of genes that is preferentially expressed in the vertebrae is superimposed on the experiment describing

genes that are regulated by TGF- $\beta$ , genes that are down-regulated by TGF- $\beta$  predominate. Together the results suggest that TGF- $\beta$  supports differentiation of IVD from sclerotome.

## Discussion

In this study we used microarray analysis to begin to address the mechanism of TGF- $\beta$  action in development of the axial skeleton. First, we identified a list of IVD enriched genes that can be used as markers to distinguish developing IVD from the adjacent vertebrae. We also identified a number of genes for which expression is altered in control IVD versus *Tgfbr2*-deleted IVD. GO analysis indicated that genes associated with development of multicellular organisms, patterning, and adhesion were altered by the loss of *Tgfbr2* in the presumptive IVD. Hierarchical clustering analysis indicated that at the molecular level, *Tgfbr2* mutant IVD more closely resembled vertebrae than control IVD. The results suggest that *Tgfbr2* is required to prevent cartilage formation in the presumptive IVD. We then showed that a number of IVD enriched genes are up-regulated by TGF- $\beta$  in cultured sclerotome whereas vertebrae enriched genes tended to be down-regulated by TGF- $\beta$ . The results





**Figure 5** Verification of regulation of selected genes by TGF- $\beta$  using RT-PCR. Sclerotome was treated with TGF- $\beta$ 1 for 8 hours at which time RNA was isolated, cDNA was made and semiquantitative RT-PCR performed. Beta-2-microglobulin (b2 mg) was used as a loading control. Product formation in the linear range is shown.

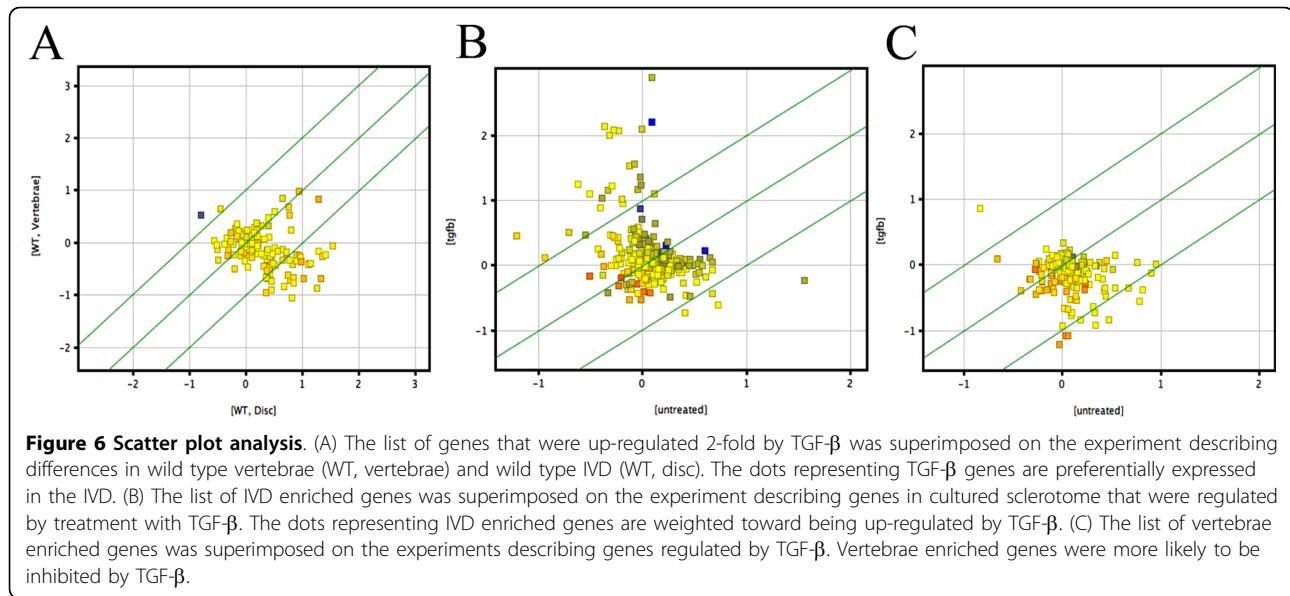
suggest that TGF- $\beta$  can also promote differentiation of IVD (AF compartment) from sclerotome.

One outcome of the molecular profiling described here is a list of genes that can be used as markers for developing IVD. It was shown previously that Tgfb3 is one of the earlier markers to denote where the future IVD will form within the sclerotome [11,12]. In addition, we and others have previously used Fmod as a marker for the developing IVD AF [25,42]. Both of these known markers were identified as IVD enriched genes in the screen described here. In addition, the list

of markers can be expanded to include GDF5 and Wnt9a, which are also expressed in the interzone of developing synovial joints [45]. Furthermore, several disease-related genes were identified as enriched in the IVD. These include Adamtsl2, Aspn, and Trps1. Adamtsl2 is associated with Geleophysic dysplasia (OMIM: #231050). Patients with Geleophysic dysplasia present with a variety of skeletal abnormalities. It was also recently shown that Adamtsl2 regulates the bioavailability of TGF- $\beta$  resulting in increased TGF- $\beta$  activity in fibroblasts from Geleophysic dysplasia patients [46]. Polymorphisms in Asp, like Cilp, which is regulated by TGF- $\beta$ , are associated with Lumbar disc disease (OMIM: #603932). Both Aspn and Clip are extracellular matrix proteins that bind to TGF- $\beta$  and suppresses its activity [30]. The D14 allele of Aspn is associated with both osteoarthritis and Lumbar disc disease and inhibits TGF- $\beta$  activity to a greater extent than other alleles [32,47]. Trichorhinophalangeal syndrome, type I (OMIM: #190350) is caused by haploinsufficiency in the transcription factor Trps1. Patients have distinctive craniofacial and skeletal abnormalities. It is not known how Trps1 might regulate development in the axial skeleton [48].

Gene Ontology (GO) analysis of the genes that were regulated in control versus mutant IVD allowed us to determine biological processes that might be altered by loss of Tgfb2. Eleven GO terms were represented at a significant level in the control versus mutant IVD gene list. The 11 terms could be broadly divided into three categories: multicellular organism development, patterning, and adhesion. Previously we showed that Tgfb2 is required for normal development of the IVD [25,26]. Using Pax1 and Pax9 as markers of rostral-caudal patterning within the sclerotome we also showed that this patterning was disrupted in Tgfb2 mutant mice [25]. The list of patterning genes altered by loss of Tgfb2 is extended in this analysis. We did not previously address alterations in adhesion due to loss of Tgfb2 in the axial skeleton. The profiling presented here suggests that this would be a logical avenue for future experiments to understand the mechanism of Tgfb2 action in the development of the axial skeleton and specifically in development of the IVD.

Hierarchical clustering analysis using a list of genes broadly associated with development indicated that by E13.5 days at the molecular level, mutant IVD more closely resembled vertebrae than control IVD. We previously showed that cartilage fills the presumptive IVD space in mutant mice by E14.5 days suggesting that one of the roles of TGF- $\beta$  in the axial skeleton is to prevent chondrogenic differentiation in the presumptive IVD [25,26]. More recently, we showed that Tgfb2 also acts to limit chondrogenesis in limb mesenchyme grown in micromass culture [35]. Limb mesenchyme from mice



with targeted deletion of *Tgfr2* via *Prx1-Cre* recombination grown in micromass culture consistently demonstrated an increase in the number of cartilage nodules with increased levels of Alcian blue staining relative to untreated cells from control limbs suggesting TGF- $\beta$  limits the formation of cartilage from mesenchymal cells. The *Prx1Cre; Tgfr2<sup>lox/lox</sup>* mice also demonstrated a failure to maintain the interzone during development of the joints in the digits. The presumptive interzone was replaced with cartilage resulting in fusion of the synovial joints in the digits. Overall, the data suggest that TGF- $\beta$  is anti-chondrogenic in limb and sclerotome mesenchyme, allowing development of the synovial and axial joints. The early development of the growth plate of the long bones and vertebral bodies was surprisingly normal in these mice suggesting TGF- $\beta$  is not required for early development of these structures as previously suspected [25,35]. The effects of TGF- $\beta$  on mature permanent cartilages, like the articular cartilage, are distinct in that TGF- $\beta$  appears to maintain the cartilage phenotype and prevent hypertrophic differentiation in these tissues [49-52]. It is known that the response of a cell to TGF- $\beta$  is dependent on its differentiation status [53].

To identify genes that are potentially involved in the anti-chondrogenic activity of TGF- $\beta$ , we can compare the lists of vertebrae enriched genes, genes that are up-regulated in the IVD by loss of *Tgfr2* in vivo and genes that are directly down-regulated by TGF- $\beta$  in sclerotome grown in culture. For example, one transcription factor, *Ebf1*, meets all three of these criteria. Here we showed using in situ hybridization that *Ebf1* is expressed at a low level in the presumptive vertebrae as early as E12.5 days. Nothing is known about the role of this

factor in development of the axial skeleton; however, it was recently shown that *Ebf1* is expressed in cells of the osteoblast lineage and controls osteoblast differentiation [54]. *Ebf1*-null mice are runted but have an increase in the number of osteoblasts in the bone. We can propose a testable model in which *Ebf1* is expressed in the developing vertebrae and is normally down-regulated by TGF- $\beta$  in the IVD. In the absence of TGF- $\beta$ , *Ebf1* is up-regulated in the IVD region promoting vertebral development. Likewise, another transcription factor, *Maf*, is down-regulated by TGF- $\beta$  in cultured sclerotome and up-regulated in mutant IVD relative to control IVD. *Maf* was previously shown to cooperate with *Sox9* to regulate many cartilage-enriched genes [43]. It is possible that down-regulation of *Maf* by TGF- $\beta$  is at least partially responsible for its antichondrogenic activity.

Based on results from overlaying lists of genes that are up-regulated by TGF- $\beta$  with genes that are enriched in the IVD we propose that TGF- $\beta$  can also promote formation of IVD AF from sclerotome. Previous studies have also shown that adult marrow stromal cells treated with TGF- $\beta$  more closely resemble IVD than cartilage based on the expression of a smaller set of molecular markers [55]. More recently, it was suggested that TGF- $\beta$  can either promote cartilage differentiation or shift mesenchymal cell differentiation from a chondrogenic to a fibrous (or tendon) fate depending on the presence of *Tgif1* and down-regulation of *Sox9* [56]. Neither expression of *Sox9* or *Tgif1* were affected by TGF- $\beta$  in either the cell culture or in vivo experiments performed here suggesting additional modes of regulation exist. We can generate hypotheses about how TGF- $\beta$  promotes IVD development by comparison of genes that are enriched

in the IVD, down-regulated in the mutant IVD, and up-regulated by TGF- $\beta$  in culture. For example, the transcription factor, Erg, meets all three criteria. It was previously shown that mouse Erg is preferentially expressed in the developing interzone and in the presumptive IVD [57,58]. Over-expression of Erg in mice using the Col2a promoter resulted in a delay in hypertrophic differentiation in the long bones. Furthermore, Tenascin C expression, a marker for articular cartilage, was expanded. It was suggested that the function of Erg was to promote the formation of permanent cartilage. The effects of Erg in the axial skeleton were not addressed but we can propose a testable model in which TGF- $\beta$  regulates expression of Erg, which in turn could promote formation of the fibrocartilage of the IVD.

### Conclusions

Based on the molecular profiling described here, we propose that TGF- $\beta$  has two functions in development of the AF in the IVD: 1) to prevent chondrocyte differentiation in the presumptive IVD space and 2) to promote differentiation of AF from sclerotome. We have identified genes that are enriched in the IVD and regulated by TGF- $\beta$  that warrant further investigation as important regulators of IVD development.

### Methods

#### Mouse crosses

All mice in this study were maintained under the guidelines of the Institutional Animal Care and Use Committee of the University of Alabama at Birmingham. Mice in which exon2 of *Tgfb2* was flanked with loxP sites (*Tgfb2<sup>fl/fl</sup>*) were obtained from Dr. H.L Moses, Vanderbilt University, Nashville, TN [59]. *Tgfb2<sup>fl/fl</sup>* mice were mated to transgenic mice that express Cre under the control of the Col2a promoter (obtained from Jackson Labs, ME; [60] to create mice in which *Tgfb2* was deleted in sclerotome (Baffi et al 2004, 2006). The genotype of adult transgenic mice was determined by PCR analysis of genomic DNA isolated from tail biopsies as previously described [25,26]. Timed pregnancies were set up by crossing Col2aCre;*Tgfb2<sup>loxP/wt</sup>* mice to *Tgfb2<sup>loxP/loxP</sup>* mice. Noon on the day of the vaginal plug was counted as E 0.5 day. Cre-negative mice were used as controls and sometimes referred to as "wild type". Col2aCre;*Tgfb2<sup>loxP/loxP</sup>* mice were used as the experimental group.

#### Laser Microdissection

E13.5 day control and mutant mouse embryos were rinsed in DEPC treated PBS, embedded into OCT and frozen for sectioning. Using a cryostat, 8-12  $\mu$ m sagittal cut frozen sections were collected and placed on PALM PEN-Membrane Slides (P.A.L.M. Microlaser

Technologies GmbH, Bernried, Germany). The frozen sections were then quickly dehydrated (70 to 100% EtOH) and stored in Xylene prior to LCM. Laser Capture Microdissection (LCM) was carried out by using a Zeiss/PALM Microbeam Instrument (Microdissection System; Carl Zeiss Microimaging GmbH, Munchen, Germany). The presumptive IVD from the lumbar region (Figure 1) were collected into RNase/DNase free special PALM AdhesiveCaps (P.A.L.M. Microlaser Technologies GmbH, Bernried, Germany). After IVDs were collected, the adjacent presumptive vertebrae were collected into a separate adhesive cap. Collected sample tubes were stored at -80C until RNA was isolated. RNA was isolated using Ambion RNAqueous - Micro Kit (Austin, TX). The optional DNase treatment step was included.

#### Sclerotome Micromass Culture

Sclerotome cultures were set up using a method similar to that used for limb micromass cultures [34,35]. Briefly, after removal of the notochord, sclerotome ventral to the neural tube was isolated from E11.5 day mouse embryos. Mesenchymal cells were dissociated into a single cell suspension with incubation in 1 mg/ml collagenase D at 37°C for 30 minutes and reconstituted at a density of  $1 \times 10^7$  cells/ml. Twenty microliters of cell suspension was dropped into each well of a 24 well plate. After a pre-incubation time of 1 h at 37°C to allow cells to attach, the cultures were then flooded with F-12:DMEM (3:2) containing 10% FBS, 50  $\mu$ g/ml ascorbic acid, 10 mM  $\beta$ -glycerolphosphate, 2 mM glutamine, antibiotics with or without 5 ng/ml of TGF $\beta$ 1 or 50 ng/ml BMP4 (R&D Systems). Cultures were incubated at 37°C in CO<sub>2</sub> incubator. To stain with Alcian blue, micromass cultures were rinsed with PBS and fixed with 4% paraformaldehyde for 15 minutes at room temperature at which time cells were incubated in Alcian blue staining solution (75%-ethanol Alcian blue solution: 0.1 M HCl = 4:1) at 37°C overnight. Cells were then washed with 70% ethanol and photographed. RNA was extracted from the cells in culture using the standard Trizol method [61]. RNA was Dnase treated and then tested using RT-PCR to assure there was no DNA contamination in the samples.

#### Affymetrix Microarrays

The Affymetrix Mouse 430 2.0 GeneChip Array was completed in the Gene Expression Shared Facility located in the Hefflin Center for Genomic Sciences at the University of Alabama, Birmingham. The quality of each RNA sample was determined by analysis on the 2100 Agilent Bioanalyzer prior to RNA labeling. Detailed genechip analysis procedures are presented in the Manufacturer's GeneChip Expression Technical

Manual (Affymetrix). Briefly, 50 ng of total RNA from each sample was used in a two cycle cDNA amplification protocol using T7-linked oligo dT primers as per the manufacturer's instructions. After the first round of cDNA synthesis an *in vitro* transcription step was utilized to amplify the RNA following which a second round of cDNA synthesis was performed. Subsequently, cRNA was generated and biotin was incorporated into the cRNA strand by standard methods (Affymetrix) followed by cRNA fragmentation, and preparation of hybridization cocktail. The arrays were hybridized overnight at 45°C, and then washed, stained, and scanned the next day. Gene expression levels were extracted using AGCC (Affymetrix GeneChip Command Console).

### Microarray Analysis

Statistical analysis and gene lists for the array experiments were generated using the software package GeneSprings (Agilent, Santa Clara, CA). Bioinformatics analysis including scatterplots, clustering, Gene Ontology (GO) and Gene Set Enrichment Analysis (GSEA), were also performed using GeneSprings (Agilent, Santa Clara, CA). Briefly, to generate gene lists, the raw GeneChip files (.cel) from GeneChip Operating Software (AGCC, Affymetrix, CA) were uploaded to Genesprings, background was subtracted, and data was normalized using the RMA method and default settings in Genesprings. The control or otherwise mentioned group was used as a baseline to calculate the intensity ratio/fold changes of the treated versus the control groups. The ratio was log<sub>2</sub>-transformed before further statistical analysis. The p-values were obtained by ANOVA assuming unequal variance. Clustering and scatter analysis was also done in Genesprings.

Microarray data was deposited into the Gene Expression Omnibus (GEO; accession number GSE18649).

### In situ hybridization

E12.5 embryos were fixed in 4% paraformaldehyde (PFA) overnight at 4°C then processed for paraffin histology. DIG labeled probes for *Nfatc1* [62] and *Ebf1* [63] were synthesized using T7/Sp6 DIG RNA Labeling Kit (Roche). 5 µm thick tissue sections were dehydrated and fixed for 10 min in 4% PFA then treated with 1 µg/ml proteinase K for 10 min. Sections were post-fixed in 4% PFA for 5 min then treated for 10 min with acetic anhydride in 0.1 M triethanolamine. Pre-treatment was done for 1 hr at 65°C with hybridization buffer (10 mM Tris pH7.5, 600 mM NaCl, 1 mM EDTA, 0.25% SDS, 10% Dextran Sulfate, 1× Denhardt's, 200 µg/ml yeast tRNA, 50% formamide) then incubated overnight at 65°C with probe diluted 1:100 in hybridization buffer. Post-hybridization washes were done in 1× SSC/50% formamide at

65°C for 30 min, TNE (10 mM Tris pH7.5, 500 mM NaCl, 1 mM EDTA) for 10 min at 37°C, TNE/20 µg/ml Rnase A for 30 min at 37°C, TNE for 10 min at 37°C, 2× SSC for 20 min at 65°C, and 2 washes in 0.2× SSC for 20 min each at 65°C. For the antibody incubation, sections were washed in MABT (100 mM Maleic Acid, 150 mM NaCl, 0.1% Tween-20, pH7.5) then incubated for 1 hr in 20% heat inactivated sheep serum (HISS) and 2% blocking solution (Roche) in MABT before adding anti-DIG-AP (1:2500, Roche) in 5% HISS/MABT and incubating overnight at 4°C. Sections were then washed with MABT and placed in BM Purple (Roche).

### RT-PCR

RNA samples were collected from sclerotome micro-mass cultures untreated or treated with 5 ng/ml Tgfb1 for 8 hrs, using Trizol (Invitrogen). cDNA was synthesized from equal amounts of total RNA using Superscript III (Invitrogen) with random primers. Semi-quantitative PCR was done using equal amounts of cDNA templates and samples were collected at 25, 30 and 35 cycles. Template amount was normalized using beta2 microglobulin as an internal control. Primer sets used for PCR are listed in additional file 6: supplemental table S6. Primers were designed using NCBI primer BLAST or selected from Primer Bank [64,65].

**Additional file 1: IVD enriched genes.** List of all E13.5 day IVD enriched genes.

[Click here for file](#)

[<http://www.biomedcentral.com/content/supplementary/1471-213X-10-29-S1.XLS>]

**Additional file 2: Vertebrae enriched genes.** List of all E13.5 day vertebrae enriched genes.

[Click here for file](#)

[<http://www.biomedcentral.com/content/supplementary/1471-213X-10-29-S2.XLS>]

**Additional file 3: Genes differentially expressed in control and Tgfb2-deleted IVD.** List of genes regulated by loss of Tgfb2 in E13.5 day IVD.

[Click here for file](#)

[<http://www.biomedcentral.com/content/supplementary/1471-213X-10-29-S3.XLS>]

**Additional file 4: TGF-β regulated genes.** List of all genes regulated in sclerotome cells after 8 hours of treatment with 5 ng/ml TGF-β1.

[Click here for file](#)

[<http://www.biomedcentral.com/content/supplementary/1471-213X-10-29-S4.XLS>]

**Additional file 5: BMP4 regulated genes.** List of all genes regulated in sclerotome cells after 8 hours of treatment with 50 ng/ml BMP4.

[Click here for file](#)

[<http://www.biomedcentral.com/content/supplementary/1471-213X-10-29-S5.XLS>]

**Additional file 6: Primers table.** Primers used for PCR.

[Click here for file](#)

[<http://www.biomedcentral.com/content/supplementary/1471-213X-10-29-S6.DOC>]

### Acknowledgements

The microarray experiments were carried out in the Heflin Center for Genomic Science supported by the UAB Comprehensive Cancer Center Core Grant 5P30 CA13148-37. We would like to thank Dr. Michael Crowley in the microarray facility for his help and advice on these experiments. We also acknowledge the assistance of the UAB Laser Microdissection Facility. This study was supported by grants from the National Institutes of Health, R01AR053860 and R21AR055110, to R.S. M.C. is supported by NIDCR Training Grant (DART) T32-DE0176707.

### Author details

<sup>1</sup>Department of Cell Biology, University of Alabama at Birmingham, Birmingham AL, USA. <sup>2</sup>Biostatistics Unit Comprehensive Cancer Center, University of Alabama at Birmingham, Birmingham AL, USA. <sup>3</sup>Biomedical Informatics Program, Clinical Translational Science Institute, West Virginia University, Morgantown WV, USA.

### Authors' contributions

PS set up the crosses and genotyped all of the mice used for this study, performed laser capture and RNA isolation, set up the sclerotome cultures, treated and isolated RNA from the cultures. MC performed the in situ hybridization experiments and RT-PCR to verify gene expression. DC generated the initial gene lists from the microarray data and assisted with additional statistical and bioinformatics analysis. RS conceived the experimental design, coordinated the experiments, did literature and database searches for gene expression patterns, performed analysis using GeneSprints software, and wrote the manuscript. All authors read and approved the final manuscript.

Received: 20 October 2009 Accepted: 9 March 2010

Published: 9 March 2010

### References

- Christ B, Huang R, Wilting J: **The development of the avian vertebral column.** *Anat Embryol (Berl)* 2000, **202**:179-94.
- Christ B, Huang R, Scaal M: **Formation and differentiation of the avian sclerotome.** *Anat Embryol (Berl)* 2004, **208**:333-50.
- Stockdale FE, Nikovits W Jr, Christ B: **Molecular and cellular biology of avian somite development.** *Dev Dyn* 2000, **219**:304-21.
- Peters H, Wilm B, Sakai N, Imai K, Maas R, Balling R: **Pax1 and Pax9 synergistically regulate vertebral column development.** *Development* 1999, **126**:5399-408.
- Huang R, Zhi Q, Brand-Saber B, Christ B: **New experimental evidence for somite resegmentation.** *Anat Embryol (Berl)* 2000, **202**:195-200.
- Mittapalli VR, Huang R, Patel K, Christ B, Scaal M: **Arthrotome: a specific joint forming compartment in the avian somite.** *Dev Dyn* 2005, **234**:48-53.
- Paavola LG, Wilson DB, Center EM: **Histochemistry of the developing notochord, perichordal sheath and vertebrae in Danforth's short-tail (sd) and normal C57BL/6 mice.** *J Embryol Exp Morphol* 1980, **55**:227-45.
- Theiler K: **Vertebral malformations.** *Adv Anat Embryol Cell Biol* 1988, **112**:1-99.
- Rufai A, Benjamin M, Ralphs JR: **The development of fibrocartilage in the rat intervertebral disc.** *Anat Embryol (Berl)* 1995, **192**:53-62.
- Poole AR: **The histopathology of ankylosing spondylitis: are there unifying hypotheses?.** *Am J Med Sci* 1998, **316**:228-33.
- Pelton RW, Dickinson ME, Moses HL, Hogan BLM: **In situ hybridization analysis of TGF- $\beta$ 3 RNA expression during mouse development: comparative studies with TGF- $\beta$ 1 and - $\beta$ 2.** *Development* 1990, **110**:600-620.
- Millan FA, Denhez F, Kondaiah P, Akhurst R: **Embryonic gene expression patterns of TGF beta 1, beta 2, and beta 3 suggest different developmental functions in vivo.** *Development* 1991, **111**:131-143.
- Roberts AB, Sporn MB: **The Transforming Growth Factor- $\beta$ s.** *Peptide Growth Factors and their Receptors* Heidelberg: Springer-Verlag; Sporn MB, Roberts AB 1990, 419-472.
- Hogan BLM: **Bone morphogenetic proteins: multifunctional regulators of vertebrate development.** *Genes and Development* 1996, **10**:1580-1594.
- Massague J, Blain SW, Lo RS: **TGFbeta signaling in growth control, cancer, and heritable disorders.** *Cell* 2000, **103**:295-309.
- Wrana JL, Attisano L, Wieser R, Ventura F, Massagué J: **Mechanism of activation of the TGF- $\beta$  receptor.** *Nature* 1994, **370**:341-347.
- Schmid P, Cox D, Bilbe G, Maier R, McMaster GK: **Differential expression of TGF beta 1, beta 2 and beta 3 genes during mouse embryogenesis.** *Development* 1991, **111**:117-30.
- Mummery CL: **Transforming growth factor beta and mouse development.** *Microsc Res Tech* 2001, **52**:374-86.
- Lawler S, Candia AF, Ebner R, Shum L, Lopez AR, Moses HL, Wright CVE, Derynck R: **The murine type II TGF- $\beta$  receptor has a coincident embryonic expression and binding preference for TGF- $\beta$ 1.** *Development* 1994, **120**:165-175.
- Iseki S, Osumi-Yamashita N, Miyazono K, Franzén P, Ichijo H, Ohtani H, Hayashi Y, Eto K: **Localization of transforming growth factor- $\beta$  type I and type II receptors in mouse development.** *Experimental Cell Research* 1995, **219**:339-347.
- Mariano JM, Montuenga LM, Prentice MA, Cuttitta F, Jakowlew SB: **Concurrent and distinct transcription and translation of transforming growth factor-beta type I and type II receptors in rodent embryogenesis.** *Int J Dev Biol* 1998, **42**:1125-36.
- Matsunaga S, Nagano S, Onishi T, Morimoto N, Suzuki S, Komiya S: **Age-related changes in expression of transforming growth factor-beta and receptors in cells of intervertebral discs.** *J Neurosurg* 2003, **98**:63-7.
- Kingsley DM: **What do BMPs do in mammals? Clues from the mouse short ear mutation.** *Trends in Genetics* 1994, **10**:16-21.
- Serra R, Chang C: **TGF-beta signaling in human skeletal and patterning disorders.** *Birth Defects Research (Part C)* 2003, **69**:333-351.
- Baffi MO, Moran MA, Serra R: **Tgfb2 regulates the maintenance of boundaries in the axial skeleton.** *Dev Biol* 2006, **296**:363-74.
- Baffi MO, Slattery E, Sohn P, Moses HL, Chytil A, Serra R: **Conditional deletion of the TGF-beta type II receptor in Col2a expressing cells results in defects in the axial skeleton without alterations in chondrocyte differentiation or embryonic development of long bones.** *Dev Biol* 2004, **276**:124-42.
- Sandell LJ, Morris N, Robbins JR, Goldring MB: **Alternatively spliced type II procollagen mRNAs define distinct populations of cells during vertebral development: differential expression of the amino-propeptide.** *J Cell Biol* 1991, **114**:1307-19.
- Jaakkola E, Crane AM, Laiho K, Herzberg I, Sims AM, Bradbury L, Calin A, Brophy S, Kauppi M, Kaarela K, et al: **The effect of transforming growth factor beta1 gene polymorphisms in ankylosing spondylitis.** *Rheumatology (Oxford)* 2004, **43**:32-8.
- Yamada Y, Okuizumi H, Miyauchi A, Takagi Y, Ikeda K, Harada A: **Association of transforming growth factor beta1 genotype with spinal osteophytosis in Japanese women.** *Arthritis Rheum* 2000, **43**:452-60.
- Seki S, Kawaguchi Y, Chiba K, Mikami Y, Kizawa H, Oya T, Mio F, Mori M, Miyamoto Y, Masuda I, et al: **A functional SNP in CILP, encoding cartilage intermediate layer protein, is associated with susceptibility to lumbar disc disease.** *Nat Genet* 2005, **37**:607-12.
- Visel A, Thaller C, Eichele G: **GenePaint.org: an atlas of gene expression patterns in the mouse embryo.** *Nucleic Acids Res* 2004, **32**:D552-6.
- Song YQ, Cheung KM, Ho DW, Poon SC, Chiba K, Kawaguchi Y, Hirose Y, Alini M, Grad S, Yee AF, et al: **Association of the asporin D14 allele with lumbar-disc degeneration in Asians.** *Am J Hum Genet* 2008, **82**:744-7.
- Ludecke HJ, Schaper J, Meinecke P, Momeni P, Gross S, von Holtum D, Hirche H, Abramowicz MJ, Albrecht B, Apacik C, et al: **Genotypic and phenotypic spectrum in tricho-rhino-phalangeal syndrome types I and III.** *Am J Hum Genet* 2001, **68**:81-91.
- Kaplowitz PB, D'Ercole AJ, Underwood LE: **Stimulation of embryonic mouse limb bud mesenchymal cell growth by peptide growth factors.** *Journal of Cellular Physiology* 1982, **112**:353-359.
- Seo HS, Serra R: **Deletion of Tgfb2 in Prx1-cre expressing mesenchyme results in defects in development of the long bones and joints.** *Dev Biol* 2007, **310**:304-16.
- Brand-Saber B, Wilting J, Ebensperger C, Christ B: **The formation of somite compartments in the avian embryo.** *Int J Dev Biol* 1996, **40**:411-20.
- Inman KE, Downs KM: **Localization of Brachyury (T) in embryonic and extraembryonic tissues during mouse gastrulation.** *Gene Expr Patterns* 2006, **6**:783-93.

38. Yoon BS, Ovchinnikov DA, Yoshii I, Mishina Y, Behringer RR, Lyons KM: **Bmpr1a and Bmpr1b have overlapping functions and are essential for chondrogenesis in vivo.** *Proc Natl Acad Sci USA* 2005, **102**:5062-7.
39. Wozney JM: **Bone morphogenetic proteins.** *Prog Growth Factor Res* 1989, **1**:267-80.
40. Hatakeyama Y, Tuan RS, Shum L: **Distinct functions of BMP4 and GDF5 in the regulation of chondrogenesis.** *J Cell Biochem* 2004, **91**:1204-17.
41. Denker AE, Haas AR, Nicoll SB, Tuan RS: **Chondrogenic differentiation of murine C3H10T1/2 multipotential mesenchymal cells: I. Stimulation by bone morphogenetic protein-2 in high-density micromass cultures.** *Differentiation* 1999, **64**:67-76.
42. Smits P, Lefebvre V: **Sox5 and Sox6 are required for notochord extracellular matrix sheath formation, notochord cell survival and development of the nucleus pulposus of intervertebral discs.** *Development* 2003, **130**:1135-48.
43. Huang W, Lu N, Eberspaecher H, De Crombrughe B: **A new long form of c-Maf cooperates with Sox9 to activate the type II collagen gene.** *J Biol Chem* 2002, **277**:50668-75.
44. Pryce BA, Watson SS, Murchison ND, Staverosky JA, Dunker N, Schweitzer R: **Recruitment and maintenance of tendon progenitors by TGFbeta signaling are essential for tendon formation.** *Development* 2009, **136**:1351-61.
45. Pacifici M, Koyama E, Shibukawa Y, Wu C, Tamamura Y, Enomoto-Iwamoto M, Iwamoto M: **Cellular and molecular mechanisms of synovial joint and articular cartilage formation.** *Ann N Y Acad Sci* 2006, **1068**:74-86.
46. Le Goff C, Morice-Picard F, Dagonneau N, Wang LW, Perrot C, Crow YJ, Bauer F, Flori E, Prost-Squarcioni C, Krakow D, et al: **ADAMTSL2 mutations in geleophysic dysplasia demonstrate a role for ADAMTS-like proteins in TGF-beta bioavailability regulation.** *Nat Genet* 2008, **40**:1119-23.
47. Kizawa H, Kou I, Iida A, Sudo A, Miyamoto Y, Fukuda A, Mabuchi A, Kotani A, Kawakami A, Yamamoto S, et al: **An aspartic acid repeat polymorphism in asporin inhibits chondrogenesis and increases susceptibility to osteoarthritis.** *Nat Genet* 2005, **37**:138-44.
48. Napierala D, Sam K, Morello R, Zheng Q, Munivez E, Shivdasani RA, Lee B: **Uncoupling of chondrocyte differentiation and perichondrial mineralization underlies the skeletal dysplasia in tricho-rhino-phalangeal syndrome.** *Hum Mol Genet* 2008, **17**:2244-54.
49. Serra R, Johnson M, Filvaroff EH, LaBorde J, Sheehan DM, Derynck R, Moses HL: **Expression of a truncated, kinase-defective TGF-beta type II receptor in mouse skeletal tissue promotes terminal chondrocyte differentiation and osteoarthritis.** *Journal of Cell Biology* 1997, **139**:541-552.
50. Zuscik MJ, Baden JF, Wu Q, Sheu TJ, Schwarz EM, Drissi H, O'Keefe RJ, Puzas JE, Rosier RN: **5-azacytidine alters TGF-beta and BMP signaling and induces maturation in articular chondrocytes.** *J Cell Biochem* 2004, **92**:316-31.
51. Yang X, Chen L, Xu X, Li C, Huang C, Deng CX: **TGF-beta/Smad3 signals repress chondrocyte hypertrophic differentiation and are required for maintaining articular cartilage.** *J Cell Biol* 2001, **153**:35-46.
52. Dabovic B, Chen Y, Colarossi C, Obata H, Zambuto L, Perle MA, Rifkin DB: **Bone abnormalities in latent TGF-[beta] binding protein (Ltbp)-3-null mice indicate a role for Ltbp-3 in modulating TGF-[beta] bioavailability.** *J Cell Biol* 2002, **156**:227-32.
53. Moses HL, Serra R: **Regulation of Differentiation by TGF-beta.** *Current Opinion in Genetics and Development* 1996, **6**:581-586.
54. Horowitz MC, Lorenzo JA: **B lymphocytes and the skeleton.** *Ann N Y Acad Sci* 2007, **1117**:82-93.
55. Steck E, Bertram H, Abel R, Chen B, Winter A, Richter W: **Induction of intervertebral disc-like cells from adult mesenchymal stem cells.** *Stem Cells* 2005, **23**:403-11.
56. Lorda-Diez CI, Montero JA, Martinez-Cue C, Garcia-Porrero JA, Hurler JM: **Transforming growth factors beta coordinate cartilage and tendon differentiation in the developing limb mesenchyme.** *J Biol Chem* 2009, **284**:29988-96.
57. Iwamoto M, Tamamura Y, Koyama E, Komori T, Takeshita N, Williams JA, Nakamura T, Enomoto-Iwamoto M, Pacifici M: **Transcription factor ERG and joint and articular cartilage formation during mouse limb and spine skeletogenesis.** *Dev Biol* 2007, **305**:40-51.
58. Vlaeminck-Guillem V, Carrere S, Dewitte F, Stehelin D, Desbiens X, Duterque-Coquillaud M: **The Ets family member Erg gene is expressed in mesodermal tissues and neural crests at fundamental steps during mouse embryogenesis.** *Mech Dev* 2000, **91**:331-5.
59. Chytil A, Magnuson MA, Wright CV, Moses HL: **Conditional inactivation of the TGF-beta type II receptor using Cre:Lox.** *Genesis* 2002, **32**:73-5.
60. Ovchinnikov DA, Deng JM, Ogunrinu G, Behringer RR: **Col2a1-directed expression of Cre recombinase in differentiating chondrocytes in transgenic mice.** *Genesis* 2000, **26**:145-6.
61. Chomerymski P, Sacchi N: **Single-step method of RNA isolation by acid guanidium thiocyanate-phenol-chloroform extraction.** *Analyt Biochem* 1987, **162**:156-159.
62. Lange AW, Molkenin JD, Yutzey KE: **DSCR1 gene expression is dependent on NFATc1 during cardiac valve formation and colocalizes with anomalous organ development in trisomy 16 mice.** *Dev Biol* 2004, **266**:346-60.
63. Garel S, Marin F, Mattei MG, Vesque C, Vincent A, Charnay P: **Family of Ebf/Olf-1-related genes potentially involved in neuronal differentiation and regional specification in the central nervous system.** *Dev Dyn* 1997, **210**:191-205.
64. Spandidos A, Wang X, Wang H, Dragnev S, Thurber T, Seed B: **A comprehensive collection of experimentally validated primers for Polymerase Chain Reaction quantitation of murine transcript abundance.** *BMC Genomics* 2008, **9**:633.
65. Wang X, Seed B: **A PCR primer bank for quantitative gene expression analysis.** *Nucleic Acids Res* 2003, **31**:e154.
66. Koo BH, Le Goff C, Jungers KA, Vasanthi A, O'Flaherty J, Weyman CM, Apte SS: **ADAMTS-like 2 (ADAMTSL2) is a secreted glycoprotein that is widely expressed during mouse embryogenesis and is regulated during skeletal myogenesis.** *Matrix Biol* 2007, **26**:431-41.
67. Eyre DR, Matsui Y, Wu JJ: **Collagen polymorphisms of the intervertebral disc.** *Biochem Soc Trans* 2002, **30**:844-8.
68. Doi M, Nagano A, Nakamura Y: **Molecular cloning and characterization of a novel gene, EMILIN-5, and its possible involvement in skeletal development.** *Biochem Biophys Res Commun* 2004, **313**:888-93.
69. Nakamura T, Ruiz-Lozano P, Lindner V, Yabe D, Taniwaki M, Furukawa Y, Kobuke K, Tashiro K, Lu Z, Andon NL, et al: **DANCE, a novel secreted RGD protein expressed in developing, atherosclerotic, and balloon-injured arteries.** *J Biol Chem* 1999, **274**:22476-83.
70. Rock R, Schrauth S, Gessler M: **Expression of mouse dchs1, fbx1, and fat-j suggests conservation of the planar cell polarity pathway identified in Drosophila.** *Dev Dyn* 2005, **234**:747-55.
71. Shi S, Ciurli C, Cartman A, Pidoux I, Poole AR, Zhang Y: **Experimental immunity to the G1 domain of the proteoglycan versican induces spondylitis and sacroiliitis, of a kind seen in human spondylarthropathies.** *Arthritis Rheum* 2003, **48**:2903-15.
72. Henry SP, Takanosu M, Boyd TC, Mayne PM, Eberspaecher H, Zhou W, de Crombrughe B, Hook M, Mayne R: **Expression pattern and gene characterization of asporin, a newly discovered member of the leucine-rich repeat protein family.** *J Biol Chem* 2001, **276**:12212-21.
73. Yaylaoglu MB, Titmus A, Visel A, Alvarez-Bolado G, Thaller C, Eichele G: **Comprehensive expression atlas of fibroblast growth factors and their receptors generated by a novel robotic in situ hybridization platform.** *Dev Dyn* 2005, **234**:371-86.
74. Settle SH Jr, Rountree RB, Sinha A, Thacker A, Higgins K, Kingsley DM: **Multiple joint and skeletal patterning defects caused by single and double mutations in the mouse Gdf6 and Gdf5 genes.** *Dev Biol* 2003, **254**:116-30.
75. Feijen A, Goumans MJ, Eijnden-van Raaij van den AJ: **Expression of activin subunits, activin receptors and follistatin in postimplantation mouse embryos suggests specific developmental functions for different activins.** *Development* 1994, **120**:3621-37.
76. Britanova O, Lukyanov S, Gruss P, Tarabykin V: **The mouse Laf4 gene: exon/intron organization, cDNA sequence, alternative splicing, and expression during central nervous system development.** *Genomics* 2002, **80**:31-7.

77. Aitola M, Carlsson P, Mahlapuu M, Enerback S, Pelto-Huikko M: **Forkhead transcription factor FoxF2 is expressed in mesodermal tissues involved in epithelio-mesenchymal interactions.** *Dev Dyn* 2000, **218**:136-49.
78. Kunath M, Ludecke HJ, Vortkamp A: **Expression of Trps1 during mouse embryonic development.** *Gene Expr Patterns* 2002, **2**:119-22.
79. Sampson HW, Davis RW, Dufner DC: **Spondyloarthropathy in progressive ankylosis mice: ultrastructural features of the intervertebral disk.** *Acta Anat (Basel)* 1991, **141**:36-41.
80. Stelzer C, Brimmer A, Hermanns P, Zabel B, Dietz UH: **Expression profile of Paps2 (3'-phosphoadenosine 5'-phosphosulfate synthase 2) during cartilage formation and skeletal development in the mouse embryo.** *Dev Dyn* 2007, **236**:1313-8.
81. Ferrer-Vaquero A, Maurey P, Werzowa J, Firnberg N, Leibbrandt A, Neubuser A: **Expression and regulation of HTRA1 during chick and early mouse development.** *Dev Dyn* 2008, **237**:1893-900.
82. Bouadjelal M, Taneja R, Matsubara S, Bouillet P, Dolle P, Chambon P: **Overexpression of Stra13, a novel retinoic acid-inducible gene of the basic helix-loop-helix family, inhibits mesodermal and promotes neuronal differentiation of P19 cells.** *Genes Dev* 1997, **11**:2052-65.
83. Sakai M, Imaki J, Yoshida K, Ogata A, Matsushima-Hibaya Y, Kuboki Y, Nishizawa M, Nishi S: **Rat maf related genes: specific expression in chondrocytes, lens and spinal cord.** *Oncogene* 1997, **14**:745-50.
84. Liu H, Liu W, Maltby KM, Lan Y, Jiang R: **Identification and developmental expression analysis of a novel homeobox gene closely linked to the mouse Twirler mutation.** *Gene Expr Patterns* 2006, **6**:632-6.
85. Schweitzer R, Chyung JH, Murtaugh LC, Brent AE, Rosen V, Olson EN, Lassar A, Tabin CJ: **Analysis of the tendon cell fate using Scleraxis, a specific marker for tendons and ligaments.** *Development* 2001, **128**:3855-66.
86. Tribioli C, Lufkin T: **The murine Bapx1 homeobox gene plays a critical role in embryonic development of the axial skeleton and spleen.** *Development* 1999, **126**:5699-711.
87. Houzelstein D, Cheraud Y, Auda-Boucher G, Fontaine-Perus J, Robert B: **The expression of the homeobox gene Msx1 reveals two populations of dermal progenitor cells originating from the somites.** *Development* 2000, **127**:2155-64.
88. Smits P, Li P, Mandel J, Zhang Z, Deng JM, Behringer RR, de Crombrughe B, Lefebvre V: **The transcription factors L-Sox5 and Sox6 are essential for cartilage formation.** *Dev Cell* 2001, **1**:277-90.

doi:10.1186/1471-213X-10-29

**Cite this article as:** Sohn et al.: Molecular profiling of the developing mouse axial skeleton: a role for Tgfb $\beta$ 2 in the development of the intervertebral disc. *BMC Developmental Biology* 2010 **10**:29.

**Submit your next manuscript to BioMed Central and take full advantage of:**

- Convenient online submission
- Thorough peer review
- No space constraints or color figure charges
- Immediate publication on acceptance
- Inclusion in PubMed, CAS, Scopus and Google Scholar
- Research which is freely available for redistribution

Submit your manuscript at  
[www.biomedcentral.com/submit](http://www.biomedcentral.com/submit)

