

## Whole-exome sequencing identifies multiple pathogenic variants in a large South Indian family with primary open-angle glaucoma

Mohd Hussain Shah<sup>1,‡</sup>, Manojkumar Kumaran<sup>2,3,‡</sup>, Prakash Chermakani<sup>1,4</sup>, Mohideen Abdul Kader<sup>5</sup>, R Ramakrishnan<sup>5</sup>, Subbiah R Krishnadas<sup>4</sup>, Bharanidharan Devarajan<sup>2,‡</sup>, Periasamy Sundaresan<sup>1</sup>

**Purpose:** To identify the pathogenic variants associated with primary open-angle glaucoma (POAG) using whole-exome sequencing (WES) data of a large South Indian family. **Methods:** We recruited a large five-generation South Indian family ( $n = 84$ ) with a positive family history of POAG ( $n = 19$ ). All study participants had a comprehensive ocular evaluation. We performed WES for 16 samples (nine POAG and seven unaffected controls) since Sanger sequencing of the POAG candidate genes (*MYOC*, *OPTN*, and *TBK1*) showed no genetic variation. We used an in-house pipeline for prioritizing the pathogenic variants based on their segregation among the POAG individual. **Results:** We identified one novel and five low-frequency pathogenic variants with consistent co-segregation in all affected individuals. The variant c.G3719A in RPGR-interacting domain of RPGRIP1 that segregated heterozygously with the six POAG cases is distinct from variants causing photoreceptor dystrophies, reported affecting the RPGR protein complex signaling in primary cilia. The cilia in trabecular meshwork (TM) cells has been reported to mediate the intraocular pressure (IOP) sensation. Furthermore, we identified a novel c.A1295G variant in Rho guanine nucleotide exchange factors Gene 40 (ARHGEF40) and a likely pathogenic variant in the RPGR gene, suggesting that they may alter the RhoA activity essential for IOP regulation. **Conclusion:** Our study supports that low-frequency pathogenic variants in multiple genes and pathways probably affect Primary Open Angle Glaucoma's pathogenesis in the large South Indian family. Furthermore, it requires larger case-controls to perform family-based association tests and to strengthen our analysis.

**Key words:** ARGHEF40 gene, Genetic heterogeneity, primary open-angle glaucoma, RPGRIP1 South Indian, whole-exome sequencing

Glaucoma is typically characterized by progressive degeneration of the optic nerve, which causes irreversible blindness. It is the second leading cause of global blindness after cataract.<sup>[1]</sup> Primary open-angle glaucoma (POAG) is a subset of glaucoma majorly associated with loss of retinoganglion cells. Their axons trigger permanent vision loss with an apprehensive exponential growth affecting around 60.5 million people worldwide. Due to the exponential increase in the global aging population, it is estimated that 80 million people will be affected by POAG by the end of 2020<sup>[2]</sup> and the count could be expected to rise 111.8 million people by 2040 and thus has an inexplicable impact on Asian and African population.<sup>[3]</sup> Asia alone accounts for approximately 60% of global glaucoma, whereas the Africa population represents (13%), the second-largest proportion of glaucoma cases globally. In India, it is estimated that 12 million people have been affected by glaucoma.<sup>[4,5]</sup> This number is expected to increase by 16 million by the end

of 2020.<sup>[4,5]</sup> POAG is associated with several external risk factors, including advanced age, central corneal thickness, myopia, steroid responsiveness, and elevated intraocular pressure (IOP).<sup>[6]</sup> However, these risk factors do not capture the full spectrum of the disease. Though, positive family history is also one of the risk factors for POAG. Genetic characterization of the POAG positive family history is useful for identifying POAG-candidate genes (*MYOC*, *OPTN*, and *TBK1*)<sup>[6-8]</sup> that are capable of causing POAG. However, these candidate genes were discovered through large pedigrees with a positive family history of glaucoma. In addition, many studies have shown that POAG development is associated with various genetic risk factors, including genetic variants in *CDKN2B-AS1*<sup>[9-12]</sup>, *CAV1/CAV2*,<sup>[13]</sup> *TMCO1*<sup>[14]</sup>, *AFAP1*,<sup>[15]</sup> *TXNRD2*, *FOXC1/GMDS*, *ATXN2*,<sup>[16]</sup> *FNDC3B*,<sup>[17,18]</sup> *GAS*,<sup>[14]</sup> *PMM2*,<sup>[19]</sup> *TGFBR3*,<sup>[20]</sup> and *SIX1/SIX6*.<sup>[10,11]</sup> The genetic heterogeneity and definitive heritability of the disease necessitated an extensive molecular characterization to identify the factors responsible for the genetic predisposition of POAG in affected individuals.

Departments of <sup>1</sup>Genetics and <sup>2</sup>Bioinformatics, Aravind Medical Research Foundation, <sup>6</sup>Glaucoma Clinic, Aravind Eye Hospital, Madurai, <sup>5</sup>Glaucoma Clinic, Aravind Eye Hospital, Tirunelveli, <sup>3</sup>School of Chemical and Biotechnology, SASTRA (Deemed to be University), Thanjavur, <sup>4</sup>Department of Molecular Biology, Alagappa University, Karaikudi, Tamil Nadu, India

<sup>‡</sup>Authors are equally contributed

**Correspondence to:** Dr. Periasamy Sundaresan, Department of Genetics, Aravind Medical Research Foundation, Madurai, Tamil Nadu, India. E-mail: sundar@aravind.org

Received: 21-Oct-2020

Revision: 21-Feb-2021

Accepted: 05-Apr-2021

Published: 25-Aug-2021

Access this article online

Website:

www.ijo.in

DOI:

10.4103/ijo.IJO\_3301\_20

Quick Response Code:



This is an open access journal, and articles are distributed under the terms of the Creative Commons Attribution-NonCommercial-ShareAlike 4.0 License, which allows others to remix, tweak, and build upon the work non-commercially, as long as appropriate credit is given and the new creations are licensed under the identical terms.

**For reprints contact:** WKHLRPMedknow\_reprints@wolterskluwer.com

**Cite this article as:** Shah MH, Kumaran M, Chermakani P, Kader MA, Ramakrishnan R, Krishnadas SR, et al. Whole-exome sequencing identifies multiple pathogenic variants in a large South Indian family with primary open-angle glaucoma. Indian J Ophthalmol 2021;69:2461-8.

Our previous report suggested that genetic screening of known candidate genes (*MYOC*, *OPTN*, and *TBK1*) in a single large South Indian family with POAG did not detect the genetic risk factors underlying the disease's pathogenesis.<sup>[21]</sup> Therefore, this study aims to perform whole-exome sequencing (WES) to identify the potential genetic risk factors associated with the positive POAG family history of the five-generation south Indian family.

## Methods

### POAG study subjects

The study was approved by the Institutional Review Board at the Aravind Eye Care System, Madurai, Tamil Nadu, India (IRB2011008BAS). This research adhered to the tenets of the Declaration of Helsinki. All the study subjects were recruited and clinically evaluated as previously described.<sup>[21]</sup> Briefly, an ophthalmic examination was conducted for 240 subjects during a field trip to Kayalpattanam; for this current study, 84 members were recruited from a single large South Indian family of five generations with a positive history of POAG [Supplementary Table 1].

### Whole-exome sequencing

For WES, 5 mL of peripheral blood was collected from each study subject. The genomic DNA was extracted using a salting-out precipitation method<sup>[22]</sup> and the concentration of the DNA samples was quantified using Qubit fluorometer. Samples

were subjected to WES using the Agilent's SureSelect Human All Exon V6 kit. The DNA libraries have been sequenced to mean >150× coverage on an Illumina HiSeq 4000 platform.

### Data analysis

We developed an automated pipeline [Supplementary Fig. 1] to identify pathogenic variants from WES data using UNIX script (<https://github.com/bharani-lab/WES-pipelines/tree/master/Script>). Raw reads (FASTQ file) were processed to remove the adapter and low-quality sequences using Cutadapt. Then the reads were further aligned against the human genome build GRCh37 using BWA-mem version 0.7.12. GATK version 4.1.0. for the identification of single-nucleotide variant (SNV) and small Insertion and Deletion (InDel) and it was further annotated using ANNOVAR.<sup>[23]</sup> We first filtered rare and low-frequency variants keeping minor allele frequency (MAF) less than or equal to 0.5% in 1000 genome, ESP, ExAC, and gnomAD. Next, all the protein-coding variants that are either introducing or removing stop codon, altering transcripts (frameshift InDels), altering a canonical splice acceptor or splice donor site, and introducing an amino acid change (non-synonymous/missense variant) selected. The non-synonymous variants were further filtered as deleterious variants with a two-step process; firstly, variants were selected with the conservation score >2.5 (GERP score) and CADD score greater than 10; secondly, the variants should be predicted to be deleterious with at least three prediction tools among the five (Polyphen2, SIFT, Mutation Taster, FATHMM

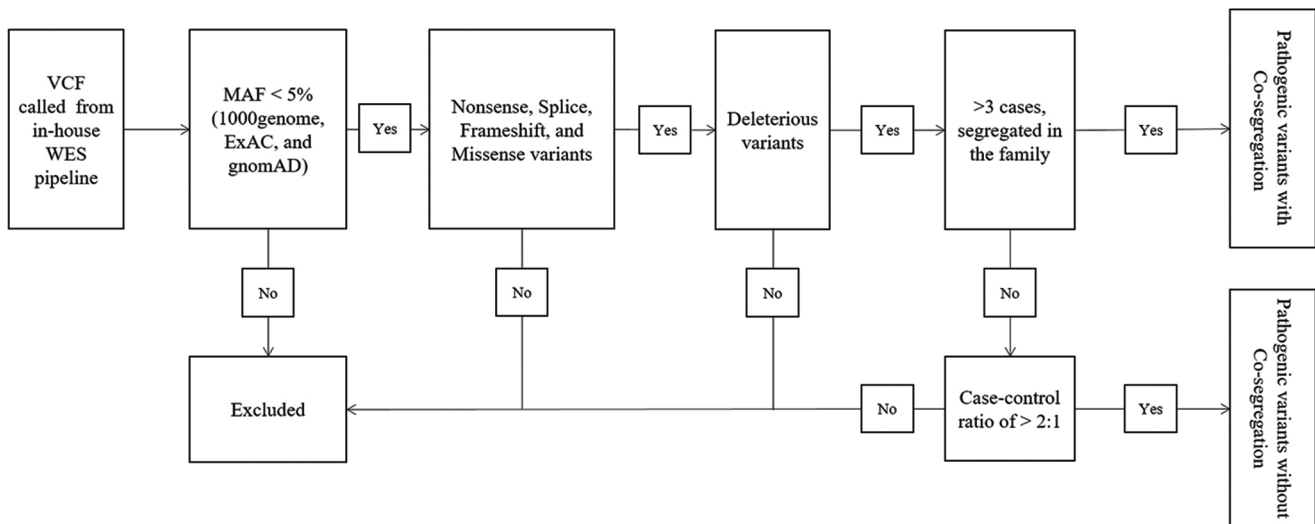


Figure 1: Workflow for variant prioritization

Table 1: List of the pathogenic variants with co-segregation with phenotype

Chromosome position	Accession number	Nucleotide changes	Gene name	Amino acid change	dbSNP	Varlect	Number of cases (sample ID)
14:21816432	NM_020366.3	c.G3719A	RPGRIP1	p.G1240E	rs34725281	8.35 <sup>†</sup>	6 (III-3; III-2; II-2; III-32; IV-26; IV-27)
14:21550588	NM_001278529.2	c.A1295G	ARHGEF40*	p.Q432R	.	1.59 <sup>‡</sup>	6 (III-3; III-2; II-2; III-32; IV-26; IV-27)
14:20666340	NM_001005503.1	c. 847delC	OR11G2	p.H282fs	rs528205284	0.99 <sup>‡</sup>	6 (III-3; III-2; II-2; III-32; IV-26; IV-27)
14:20482998	NM_001004712.1	c.A355G	OR4K14	p.M119V	rs7157076	0.95 <sup>‡</sup>	6 (III-3; III-2; II-2; III-32; IV-26; IV-27)
14:21502110	NM_001012264.4	c.C338T	RNASE13	p.S113F	rs114504351	0.71 <sup>‡</sup>	6 (III-3; III-2; II-2; III-32; IV-26; IV-27)
14:19378312	NM_001013354.1	c.T719G	OR11H12	p.V240G	rs61969158	0.22 <sup>‡</sup>	6 (III-3; III-2; II-2; III-32; IV-26; IV-27)

Varlect score with symbol <sup>†</sup>represents the direct association with glaucoma phenotypes and <sup>‡</sup>represent the indirect association. \*Represent the Novel variant

**Table 2: List of the pathogenic variants without co-segregation with phenotype**

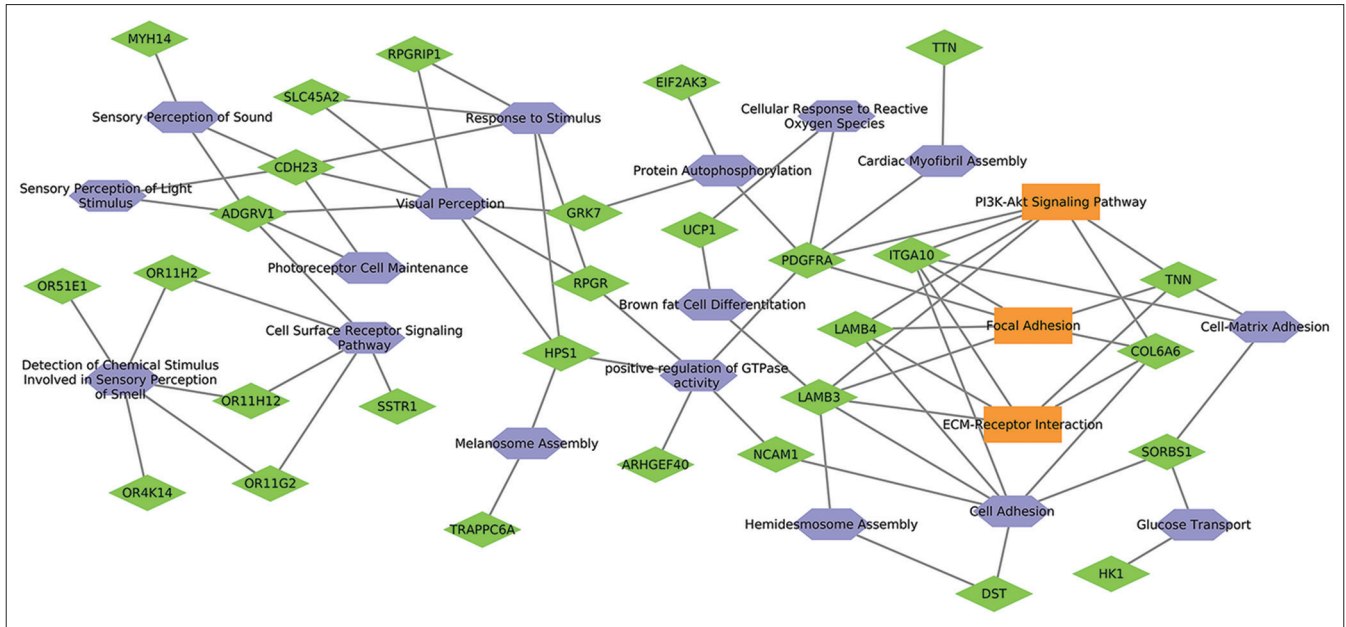
Chromosome position	Accession number	Nucleotide changes	Gene name	Amino acid change	dbSNP	Varflect	Number of cases (sample ID)	Number of controls (sample ID)
X:38144822	NM_001034853.2	c.G3430A	RPGR	p.V1144I	rs12688514	9.02*	4 (III-3; II-2; II-15)	1 (III-41)
4:128816154	NM_001190799.2	c.C2513T	PLK4	p.T838I	rs557954721	6.01*	6 (III-3; III-2; III-32; IV-26; IV-27; II-15)	1 (III-4)
14:45605338	NM_001308133.2	c.C104T	FANCM*	p.P35L	.	4.84*	6 (III-3; III-2; III-32; IV-26; IV-27; II-15)	1 (III-4)
6:56394545	NM_015548.5	c.A9427G	DST	p.N3143D	rs530170321	4.2*	6 (III-3; III-2; II-5; III-32; IV-27)	2 (III-4; III-16)
13:101759922	NM_001350750.2	c.A2408G	NALCN	p.Y803C	rs549182297	4.11*	8 (III-3; III-2; II-5; III-19; III-32; IV-27; II-15)	3 (III-41; III-4IV-10)
1:145534254	NM_001303041.1	c.A1330G	ITGA10	p.T444A	rs782732004	3.98*	3 (III-3; III-2; II-2)	1 (III-4)
1:145541806	NM_001303041.1	c.T2900C	ITGA10*	p.L967P	.	3.98*	3 (III-3; III-2; II-2)	1 (III-4)
2:179528378	NM_001267550.2	c.G36508A	TTN	p.E12170K	rs2163008	3.78*	4 (III-3; III-2; III-32)	1 (IV-28)
19:55350963	NM_001281971.2	c.509_510ins CCCGGAGCT CCTATGACATGTA	KIR2DS4	p.S151fs	rs551456772	3.56*	5 (III-3; II-5; III-32; IV-26; IV-27)	2 (IV-11; III-4)
4:55147769	NM_001347827.2	c.C2345T	PDGFRA	p.T782M	rs2291591	3.56*	4 (III-32; IV-26; IV-27; II-15)	1 (IV-28)
4:141483476	NM_021833.5	c.C680T	UCP1	p.T227I	rs148598275	3.51*	6 (III-3; III-2; III-32; IV-26; IV-27; II-15)	1 (III-4)
1:175046835	NM_022093.2	c.C281T	TNN	p.T94M	rs41266080	3.23*	4 (III-3; III-2; II-5; III-15)	2 (III-41; III-34)
3:141526640	NM_139209.2	c.G1204A	GRK7	p.D402N	rs150840377	3.21*	8 (III-3; III-2; II-5; III-32; IV-26; IV-27; III-19; II-15)	4 (III-34; IV-11; IV-28; III-41)
5:33951693	NM_001012509.4	c.G1122C	SLC45A2	p.L374F	rs166891982	3.17*	5 (III-2; III-32; IV-26; IV-27; II-15)	1 (III-4)
11:113126641	NM_000615.7	c.A1841T	NCAM1*	p.D614V	.	3.16*	6 (III-3; III-2; III-32; IV-26; IV-27; II-15)	2 (IV-28; III-4)
19:45853924	NM_177417.3	c.C1298T	KLC3*	p.S433F	.	3.05*	6 (III-3; III-2; II-5; IV-27; III-32; IV-26)	3 (IV-28; III-4; III-16)
19:50752298	NM_024729.3	c.T1360G	MYH14	p.W454G	rs572234218	2.94*	6 (III-3; III-2; II-5; III-32; IV-26; IV-27)	3 (IV-28; III-16; III-4)
1:209791929	NM_001318046.2	c.C2777A	LAMB3	p.A926D	rs2076222	2.6*	7 (III-3; III-2; II-5; III-32; IV-26; IV-27; III-19)	3 (IV-11; III-4; IV-10)
10:100189242	NM_001322492.1	c.C808T	HPS1	p.P270S	rs34533614	2.55*	3 (III-3; III-2; II-2)	1 (III-4)
10:100202987	NM_000195.5	c.T11C	HPS1	p.V4A	rs58548334	2.55*	6 (III-3; III-2; III-32; IV-26; V-27; II-15)	3 (III-41; III-34; IV-28)
10:97192237	NM_001034957.1	c.C173T	SORBS1	p.P58L	rs200179325	2.49*	6 (II-5; III-32; IV-26; IV-27; II-15; III-19)	1 (IV-10)
7:107746432	NM_001350531.2	c.C700T	LAMB4	p.H234Y	rs2074749	2.47*	8 (III-3; III-2; II-5; III-32; IV-26; IV-27; II-15; III-19)	2 (III-41; III-16)
10:90530612	NM_001289967.1	c.G683C	LIPN	p.G228A	rs201135817	2.33*	9 (III-3; III-2; II-2; II-5; III-32; IV-26)	4 (III-16; IV-28; IV-27; III-41; III-19; III-4)
3:130361856	NM_001102608.2	c.G5216A	COL6A6	p.R1739Q	rs16830494	2.17*	6 (III-3; III-2; II-5; III-32; IV-26; IV-27)	3 (III-4; III-16; ; IV-28)
19:44571252	NM_013361.6	c.1506dup	ZNF223	p.R424fs	rs562593501	2.05*	7 (III-3; III-2; II-5; III-32; IV-26; II-15; III-19)	3 (IV-11; III-4; III-16)
5:90016871	NM_032119.4	c.G9743A	ADGRV1	p.G3248D	rs16869032	2.05*	8 (III-3; III-2; II-5; III-32; IV-26; II-15; III-19)	4 (III-16; IV-28; IV-27; III-41; III-34)
10:73434888	NM_001171930.2	c.G1469C	CDH23	p.G490A	rs1227049	2.05*	6 (III-3; III-2; II-5; III-32; IV-27; III-19)	2 (III-34; III-16; ;)
10:71160787	NM_001322367.1	c.C2554G	HK1*	p.P852A	.	2.05*	6 (III-3; III-32; IV-26; II-15; III-2; II-5)	2 (III-16; III-4)
5:96117554	NM_001040458.3	c.C2290T	ERAP1*	p.P764S	.	1.95*	7 (III-3; III-2; II-2; II-5; IV-26; IV-27; III-19)	0 ( )
3:182788862	NM_001293273.1	c.A335G	MCCC1	p.E112G	rs142629318	1.83*	6 (III-3; III-32; IV-26; IV-27; II-15; II-5)	2 (III-16; III-4)
3:179408072	NM_003940.3	c.A338G	USP13	p.N113S	rs771971543	1.78*	7 (III-3; III-2; II-5; III-32; IV-26; IV-27; II-15)	3 (III-4; III-16; IV-28)
4:141483476	NM_021833.5	c.C680T	TMEM63B	p.R82P	rs371238478	1.69*	6 (III-3; III-5; III-32; IV-26; IV-27; II-15)	3 (III-4; IV-10; III-16)

Contd...

Table 2: Contd...

Chromosome position	Accession number	Nucleotide changes	Gene name	Amino acid change	dbSNP	Varflect	Number of cases (sample ID)	Number of controls (sample ID)
19:40363916	NM_003890.2	c.G14726A	FCGBP	p.T1975M	rs372872173	1.66 <sup>‡</sup>	6 (III-3; III-2; II-5; IV-27; III-32; IV-26)	3 (IV-28; III-4; III-16)
19:40366240	NM_003890.2	c.C13994T	FCGBP	p.R4909H	rs77005739	1.66 <sup>‡</sup>	3 (III-3; II-2; IV-27)	1 (IV-28)
3:141526640	NM_139209.2	c.G1204A	FCGBP	p.P4665L	rs62106922	1.66 <sup>‡</sup>	3 (III-3; II-2; IV-27)	1 (IV-28)
5:96117554	NM_001040458.3	c.C2290T	EIF2AK3	p.S136C	rs867529	1.62 <sup>‡</sup>	7 (III-3; III-2; II-5; III-32; IV-27; II-15; III-19; )	2 (III-4; III-16)
2:179528378	NM_001267550.2	c.G36508A	TIGD4	p.C204F	rs576908904	1.5 <sup>‡</sup>	6 (III-3; III-2; II-5; III-32; IV-26; IV-27; IV-10)	3 (III-16; IV-28)
15:82934639	NM_001322400	c.G941A	GOLGA6L10	p.R314H	rs200928526	1.564 <sup>‡</sup>	7 (III-3; III-2; II-5; III-32; IV-26; IV-27; II-15)	3 (III-4; III-16; IV-28)
X: 38144822	NM_001034853.2	c.G3430A	PEX5L	p.F173C	rs141827659	1.54 <sup>‡</sup>	7 (III-3; III-2; II-5; III-32; IV-26; IV-27; II-15)	3 (III-4; III-16; IV-28)
17:39622068	NM_001017402.1	c.C665A	KRT32	p.S222Y	rs2071561	1.1 <sup>‡</sup>	6 (III-3; III-2; III-32; IV-26; IV-27; II-15)	1 (III-4)
11:103006630	NM_001080463.2	c.G2527A	DYNC2H1	p.A843T	rs548461924	0.97 <sup>‡</sup>	6 (III-3; III-2; III-32; IV-26; IV-27; II-15)	2 (III-4; IV-28)
4:128816154	NM_001190799.2	c.C2513T	PDZD3	p.Q226K	rs147147532	0.85 <sup>‡</sup>	6 (III-3; III-2; III-32; IV-26; IV-27; II-15)	0
3:179529649	NM_001349404.2	c.T518G	OR51E1	p.A156T	rs202113356	0.84 <sup>‡</sup>	6 (III-3; III-2; III-32; II-15; IV-26; IV-27)	3 (III-4; III-16; IV-28)
11:119058667	NM_001168468.2	c.C676A	OR11H2	p.P269S	rs2815979	0.82 <sup>‡</sup>	6 (III-3; III-2; III-32; IV-26; IV-27; II-15)	0 (III-4; IV-28)
21:33735605	NM_014825.3	c.T1369A	URB1	p.S457T	rs148292685	0.81 <sup>‡</sup>	7 (III-3; III-2; II-5; III-32; IV-26; IV-27; II-15)	3 (III-4; III-16; IV-28)
11:30974115	NM_001350255.1	c.G1449T	DCDC1	p.R483S	rs1586633	0.78 <sup>‡</sup>	6 (III-3; III-2; IV-26; IV-27; II-15; III-19)	2 (III-4; III-34)
11:31123752	NM_001350255.1	c.A812G	DCDC1	p.D271G	rs183555899	0.78 <sup>‡</sup>	6 (III-3; III-2; IV-26; IV-27; II-15; III-19)	2 (III-4; III-34)
19:49969382	NM_001145396.2	c.G1627C	ALDH16A1	p.A543P	rs555667637	0.42 <sup>‡</sup>	6 (III-3 III-2 III-5 IV-27 III-32 IV-26)	3 (III-4_C III-16_C IV-28_C )
2:88913273	NM_004836.7	c.C407G	EFHC1	p.R353W	rs527295360	0.42 <sup>‡</sup>	6 (III-3; III-2; IV-26; IV-27; II-15; II-5)	2 (III-4; III-16)
1:209791929	NM_001318046.2	c.C2777A	KLHL24	p.D197A	rs116961268	0.42 <sup>‡</sup>	7 (III-3; III-2; II-5; III-32; IV-26; IV-27; II-15)	3 (III-4; IV-28; III-16)
19:50752298	NM_024729.3	c.T1360G	MAGIX	p.P221L	rs781930221	0.28 <sup>‡</sup>	7 (III-2; II-2; II-5; III-32; IV-26; IV-27; III-19)	3 (III-4; III-34; III-16)
5:33951693	NM_001012509.4	c.G1122C	PIEZO1	p.I2265V	rs1803382	0.24 <sup>‡</sup>	6 (III-3; III-2; III-32; IV-26; IV-27; II-15)	1 (III-4)
10:90530612	NM_001289967.1	c.G683C	LARP1B*	p.I178F	.	0.21 <sup>‡</sup>	7 (III-3; III-2; II-5; III-32; IV-26; IV-27; II-15)	3 (III-4; III-16; IV-28)
6:44103070	NM_001318792.1	c.G245C	SSTR1	p.T390delinsTLX	rs775405351	0.18 <sup>‡</sup>	6 (III-3; III-2; II-5; IV-27; II-15; III-32)	2 (IV-28; III-16)

Varflect score with symbol †represents the direct association with glaucoma phenotypes, and ‡represent the indirect association. \* Represent the Novel variant



**Figure 2:** Functional network enriched with pathways and gene ontology (GO) on genes identified with pathogenic variants. Hexagon represents the gene, rectangle represents pathways, and diamond represents GO

and LRT). Also, we checked all the variants manually with the help of IGV viewers to avoid mapping errors. All predicted deleterious variants were further filtered based on their presence in at least more than three affected individuals in the pedigree. Finally, the variants were sorted out based on their segregation among their affected individuals. We used VarElect software<sup>[24]</sup> to sort the genes based on their direct or indirect association with glaucoma.

We performed pathway and gene ontology analysis using DAVID for all the genes identified with pathogenic variants. A gene network was created using Cytoscape with the enriched pathways and biological processes.

#### Sanger sequencing for the validation of novel variant

For segregation analysis, the novel variant of the ARHGEF40 gene was PCR amplified using the following gene-specific primers (FW-5'-CTGAGCTGACGCCTGAAC TT-3'); (RV-5'-GCCGTGGGTACTGAGAAAG-3') and the fragments were bi-directional sequenced using (3130 Genetic Analyser; Applied Biosystems). Further, the results were compared with the reference sequence of ARHGEF40 gene using NCBI-BLAST program and the chromatogram was analyzed using Chromas lite (2.1) software.

## Results

### Clinical evaluation of patients

A total of 84 family members were recruited from a single large south Indian family of five generations with a positive family history of POAG after a comprehensive ophthalmic screening of 240 family members in Kayalpatanam [as shown in Supplementary Fig. 2]. Clinical assessment and complex pedigree analysis revealed that 19 of the 84 samples had been diagnosed with POAG. The clinical features of all 19 POAG-affected individuals were discussed in detail<sup>[21]</sup> [Supplementary Table 1].

### Exome sequencing and variant filtering

Samples for the WES were selected solely based on the POAG inheritance pattern observed in the pedigree of the South Indian family, which included nine POAG cases belonging to the generation (II-2,5,15, III-2,3,19,32, and IV-26,27) and seven unaffected controls (II-5, III-4, 16, 34, 41, and IV-11, 28) [Supplementary Fig. 2]. WES was carried out using Agilent SureSelect Human All Exon V6 kit and the DNA libraries have been sequenced to the Illumina HiSeq 4000 platform with an average coverage depth of ~150x. The raw data were processed and analyzed to identify the pathogenic variants [as indicated in the methods section of Fig. 1]. Approximately 60,000 variants (SNV and InDel) were identified in each patient's exome aligned to the human reference genome build GRCh37.

### Pathogenic variants

Based on pathogenic variant prioritization and phenotype-based sorting, we identified six pathogenic variants (5 non-synonymous, one frameshift variant) as shown in Table 1. We found a heterozygous variant c.G3719A altering amino acid (p.G1240E) with a deleterious effect that might affect the Retinitis Pigmentosa GTPase regulator-interacting protein1 (*RPGRIP1*) gene, which showed a direct association with glaucoma disease (Varlect score of 8.35). Among the WES screening, the variant was segregated in the family with the phenotype [Supplementary Fig. 3]. Also, Fernández-Martínez *et al.*<sup>[25]</sup> showed that mutations in the *RPGRIP1* gene might cause or increase the susceptibility to various forms of glaucoma, including POAG. Followed by the *RPGRIP1* gene, we found a novel variant c.A1295G (p.Q432R) in the *ARHGEF40* gene, which is also segregated with the family's phenotype. However, further confirmation by Sanger sequencing in the other family members (8 POAG and two unaffected family members) confirmed the same variant in 14 POAG cases and two unaffected family members. The other pathogenic genes were *OR11G2* (c.847delC p.H282fs), *OR4K14* (c.A355G p.M119V), *RNASE13* (c.C338T p.S113F), and *OR11H12* (c.T719G p.V240G).

Interestingly, all the pathogenic variants were found in the genetic loci of chromosomal location between 14q19 and 14q21.

In addition to these, in this study, we also identified 54 variants as likely pathogenic variants in 54 genes, of which 51 were missense and two were InDel variants, as shown in Table 2. From the top list based on the glaucoma phenotype, RPGR gene variants may affect its protein partner RPGRIP1 in the RPGR proteasome complex.<sup>[26]</sup> Mutations in PLK4, encoding a master regulator of centriole biogenesis, cause microcephaly, growth failure, and retinopathy.<sup>[27]</sup> Interestingly, six variants were identified as novel variants. The top variant (c.A1841T p.D614V) in the neural cell adhesion molecule 1 (*NCAM1*) gene was further confirmed in six POAG and two unaffected family members by Sanger sequencing. The *NCAM1* has been reported to be altered in the optic nerve, which is associated with elevated intraocular pressure.<sup>[28]</sup>

### Functional network analysis

A functional network has been developed for all the pathogenic variants identified in POAG-affected individuals to investigate the pathways and biological processes involved in glaucoma pathogenesis. Initially, the DAVID database was used to integrate all genes with KEGG pathways and Gene Ontology (GO) process. 57 genes were significantly enriched into three pathways and 17 GO biological processes ( $P < 0.01$ ). These pathways include Focal adhesion, ECM-receptor interaction, and PI3K-Akt signaling pathway. Further in the Gene-functional network [Fig. 2, *NCAM1*, *LAMB4*, and *PDGFRA* genes connected all three pathways to other GO processes. Of these genes, *NCAM1* was connected to the top gene list RPGRIP1 and ARHGEF40 with pathogenic variants through RPGR protein interaction and GO processes of positive regulation of GTPase activity and visual perception.

### Discussion

Studies of larger pedigree in POAG diagnosed families led to discovering mutation in *MYOC*, *OPTN*, and *TBK1* genes. Ophthalmic examination of a single family in South India with 84 family members over five generations with Egyptian heritage had a positive POAG family history revealed no mutation for the primary candidate genes (*MYOC*, *OPTN*, and *TBK1*) associated with POAG.<sup>[21]</sup>

Hence WES of 16 samples including (nine POAG and seven unaffected controls) of the 84 family members displayed a consistent co-segregation of six pathogenic genes *ARHGEF40*, *RPGRIP1*, *OR4K14*, *RNASE13*, *OR11H12*, and *OR11G2* in six POAG samples. No pathogenic variants have been identified in three of the 9 POAGs and the remaining seven unaffected individuals. Furthermore, candidate genes for the three individuals diagnosed with POAG can be identified through either deep intronic or whole-genome sequencing. All the pathogenic variants identified from WES were further prioritized based on the glaucoma phenotype using a VarElect phenotype sorting tool. Among the six co-segregating pathogenic variants, only two (*ARHGEF40* and *RPGRIP1*) showed association with glaucoma. The exciting fact is all six pathogenic variants were present in chromosome 14q, which had previously been reported to have potential POAG loci.<sup>[10,29,30]</sup> However, we did not identify rare segregating variants in other genetic loci associated with POAG (*CDKN2B-AS*, *CAV1/CAV2*, *TMCO1* *AFAP1*, *TXNRD2*,

*FOXC1/GMDS*, *ATXN2*, *FNDC3B*, *GAS*, *PMM2*, *TGFBR3*, and *SIX1/SIX6*).

The pathogenic variant in retinitis pigmentosa GTPase regulator-interacting protein 1 (*RPGRIP1*) gene is observed with the highest phenotype score in six POAG cases, suggesting that it may have a prominent role in POAG disease pathogenicity. Fernández-Martínez *et al.*<sup>[25]</sup> has shown that the heterozygous non-synonymous variants in C2 domain of *RPGRIP1* gene might cause various forms of glaucoma, including POAG. Also, it has demonstrated that *RPGRIP1* interaction with NPHP4 protein was shown to play a key role in glaucoma pathogenesis.<sup>[25]</sup> In this study, four POAG cases were found to have a heterozygous pathogenic missense variant in the *RPGR* gene. In contrast to this study homozygous or compound heterozygous variants detected in *RPGRIP1* are also associated with photoreceptor dystrophies.<sup>[31,32]</sup>

Interestingly, we observed a pathogenic variant in *RPGR* gene, which is existed in four POAG cases. *RPGRIP1* and its interacting partner *RPGR*, have been shown to express in the human retina and outside of the retina<sup>[26,33-35]</sup> may regulate cilia genesis, maintenance, and function mainly through signaling pathways.<sup>[36]</sup> Luo *et al.*<sup>[37]</sup> reported that the primary cilia of trabecular meshwork (TM) mediates intraocular pressure regulation through signaling pathway in the eye and further highlighted that the signaling pathway defect leads to Lowe syndrome developed congenital glaucoma at birth. *RPGR* and its protein partners play an important role in actin cytoskeleton remodeling of cilia through these signaling pathways by activating the small GTPase, RhoA.<sup>[38]</sup>

This research also identified a novel pathogenic variant in the *ARGHEF40* gene and this variant was further confirmed in all the affected family members using Sanger sequencing [Supplementary Fig. 3]. Studies show that Rho guanine nucleotide exchange factors Gene Family protein (*ARHGEF12*) has been implicated as a risk factor of glaucoma by increasing intraocular pressure through RhoA/RhoA kinase pathway.<sup>[39]</sup> Furthermore, the Rho/ROCK pathway's activation results in trabecular meshwork (TM) contraction, and the inhibition of this pathway would aggravate TM's relaxation with a consequent increase in outflow facility and, thereby, decrease intraocular pressure.<sup>[40]</sup> In the present study, we speculate that the *ARGHEF40* variant may affect the RhoA signaling through *RPGRIP1* and its interacting partner *RPGR* in actin cytoskeleton remodeling TM cilia, which may subsequently increase the intraocular pressure.

The pathogenic variants detected in other genes have not been reported to be directly associated with POAG. Therefore, we constructed a network of genes using GO and pathway enrichment. We have shown three pathways Focal adhesion, ECM-receptor interaction, and PI3K-Akt signaling pathway associated with the pathogenesis of POAG. Furthermore, the highlighted genes *ARHGEF40*, *RPGRIP1*, and *RPGR* were enriched through visual perception and positive regulation of GTPase activity. Intriguingly, the genes *NCAM1*, *HSP1*, and *PDGFRA*, including *ARHGEF40* and *RPGR* in the biological process of positive regulation of GTPase activity are prioritized as top pathogenic variants based on the phenotype score. A study has shown that *NCAM* participates in the optic nerve changes associated with elevated intraocular pressure.<sup>[28]</sup> However, the future work of the study will demand larger

case-controls, which will help to perform family-based association tests to strengthen our analysis.

## Conclusion

Overall, this study presented a panel of pathogenic variants in multiple genes and their possible association with POAG pathogenesis in the five-generation South Indian family. Thus, our findings strongly suggested that WES of the five-generation South Indian family showed extreme genetic heterogeneity of POAG within the family and the identified pathogenic variants showed continuous co-segregation among POAG-affected individuals. Pathway analysis also displayed the association of the candidate genes involved in POAG pathogenesis. However, it requires a larger sample size to ensure the authentic association of these identified genetic variants in POAG-affected individuals.

## Ethics approval and consent to participate

The study adhered to the tenets of the Declaration of Helsinki, and ethics committee approved on 28/01/2011 by the Institutional Review Board of the Aravind Eye Care System (IRB2011008BAS). All study participants read and signed informed consent after explaining the nature and possible significances of the study.

## Availability of data and material

The pipeline lines used for analysis in this study and a detailed tutorial are openly available for the public at (<https://github.com/bharani-lab/Wole-Exome-Analysis-Pipeline>).

We have submitted the data that support the finding of this study to SRA project ID PRJNA555016. Data can be accessed upon request.

## Acknowledgments

We thank all the patients and their families for their participation in this study. We are grateful to the Indian Council of Medical Research (ICMR) for their financial support. We are also thankful to Mr. Saravanan, Mrs. Kalarani, and Mrs. Muthu Selvi for helping us in recruiting the samples and maintaining the clinical data in our lab.

## Financial support and sponsorship

This research was supported by the Indian Council of Medical Research, Government of India (2012-0383/F1).

## Conflicts of interest

There are no conflicts of interest.

## References

- Resnikoff S, Pascolini D, Etya'ale D, Kocur I, Pararajasegaram R, Pokharel GP, *et al.* Global data on visual impairment in the year 2002. *Bull World Health Organ* 2004;82:844-51.
- Quigley H, Broman AT. The number of people with glaucoma worldwide in 2010 and 2020. *Br J Ophthalmol* 2006;90:262-7.
- Tham Y-C, Li X, Wong TY, Quigley HA, Aung T, Cheng C-Y. Global prevalence of glaucoma and projections of glaucoma burden through 2040 A systematic review and meta-analysis. *Ophthalmology* 2014;121:2081-90.
- Thylefors B, Négrel AD, Pararajasegaram R, Dadzie KY. Global data on blindness. *Bull World Health Organ* 1995;73:115-21.
- Vijaya L, George R, Baskaran M, Arvind H, Raju P, Ve Ramesh S, *et al.* Prevalence of primary open-angle glaucoma in an urban South Indian population and comparison with a rural population The Chennai glaucoma study. *Ophthalmology* 2008;115:648-654.e1.
- Fingert J. Primary open-angle glaucoma genes. *Eye (Lond)* 2011;25:587-95.
- Rezaie T, Child A, Hitchings R, Brice G, Miller L, Coca-Prados M, *et al.* Adult-onset primary open-angle glaucoma caused by mutations in optineurin. *Science* 2002;295:1077-9.
- Stone EM, Fingert JH, Alward WL, Nguyen TD, Polansky JR, Sunden SL, *et al.* Identification of a gene that causes primary open angle glaucoma. *Science* 1997;275:668-70.
- Nakano M, Ikeda Y, Tokuda Y, Fuwa M, Omi N, Ueno M, *et al.* Common variants in CDKN2B-AS1 associated with optic-nerve vulnerability of glaucoma identified by Genome-Wide association studies in Japanese. *PLoS One* 2012;7:e33389.
- Osman W, Low S-K, Takahashi A, Kubo M, Nakamura Y. A genome-wide association study in the Japanese population confirms 9p21 and 14q23 as susceptibility loci for primary open angle glaucoma. *Hum Mol Genet* 2012;21:2836-42.
- Ramdas WD, Rizopoulos D, Wolfs RC, Hofman A, de Jong PT, Vingerling JR, *et al.* Defining glaucomatous optic neuropathy from a continuous measure of optic nerve damage – The optimal cut-off point for risk-factor analysis in population-based epidemiology. *Ophthalmic Epidemiol* 2011;18:211-6.
- Wiggs J. The cell and molecular biology of complex forms of glaucoma: Updates on genetic, environmental, and epigenetic risk factors. *Invest Ophthalmol Vis Sci* 2012;53:2467-9.
- Thorleifsson G, Walters GB, Hewitt AW, Masson G, Helgason A, DeWan A, *et al.* Common variants near CAV1 and CAV2 are associated with primary open-angle glaucoma. *Nat Genet* 2010;42:906-9.
- van Koolwijk LM, Ramdas WD, Ikram MK, Jansonius NM, Pasutto F, Hysi PG, *et al.* Common genetic determinants of intraocular pressure and primary open-angle glaucoma. *PLoS Genet* 2012;8:e1002611.
- Gharahkhani P, Burdon KP, Fogarty R, Sharma S, Hewitt AH, Martin S, *et al.* Common variants near ABCA1, AFAP1 and GMD5 confer risk of primary open-angle glaucoma. *Nat Genet* 2014;46:1120-5.
- Cooke Bailey JN, Loomis SJ, Kang JH, Allingham RR, Gharahkhani P, Khor CC, *et al.* Genome-wide association analysis identifies TXNRD2, ATXN2 and FOXC1 as susceptibility loci for primary open-angle glaucoma. *Nat Genet* 2016;48:189-94.
- Hysi PG, Cheng C-Y, Springelkamp H, Macgregor S, Cooke Bailey JN, Wojciechowski R, *et al.* Genome-wide analysis of multiethnic cohorts identifies new loci influencing intraocular pressure and susceptibility to glaucoma. *Nat Genet* 2014;46:1126-30.
- Liu Y, Vitart V, Burdon KP, Khor CC, Bykhovskaya Y, Mirshahi A, *et al.* Genome-wide association analyses identify multiple loci associated with central corneal thickness and keratoconus. *Nat Genet* 2013;45:155-63.
- Chen Y, Lin Y, Vithana EN, Jia L, Zuo X, Wong TY, *et al.* Common variants near ABCA1 and in PMM2 are associated with primary open-angle glaucoma. *Nat Genet* 2014;46:1115-9.
- Li Z, Allingham RR, Nakano M, Jia L, Chen Y, Ikeda Y, *et al.* A common variant near TGFBR3 is associated with primary open angle glaucoma. *Hum Mol Genet* 2015;24:3880-92.
- Abdul Kader M, Namburi P, Ramugade S, Ramakrishnan SR, Krishnadas S, Roos BR, *et al.* Clinical and genetic characterization of a large primary open angle glaucoma pedigree. *Ophthalmic Genet* 2016;38:222-225.
- Miller SA, Dykes DD, Polesky HF. A simple salting out procedure for extracting DNA from human nucleated cells. *Nucleic Acids Res* 1988;16:1215.
- Wang J, Liu X, Zhong Y. Rho/Rho-associated kinase pathway in

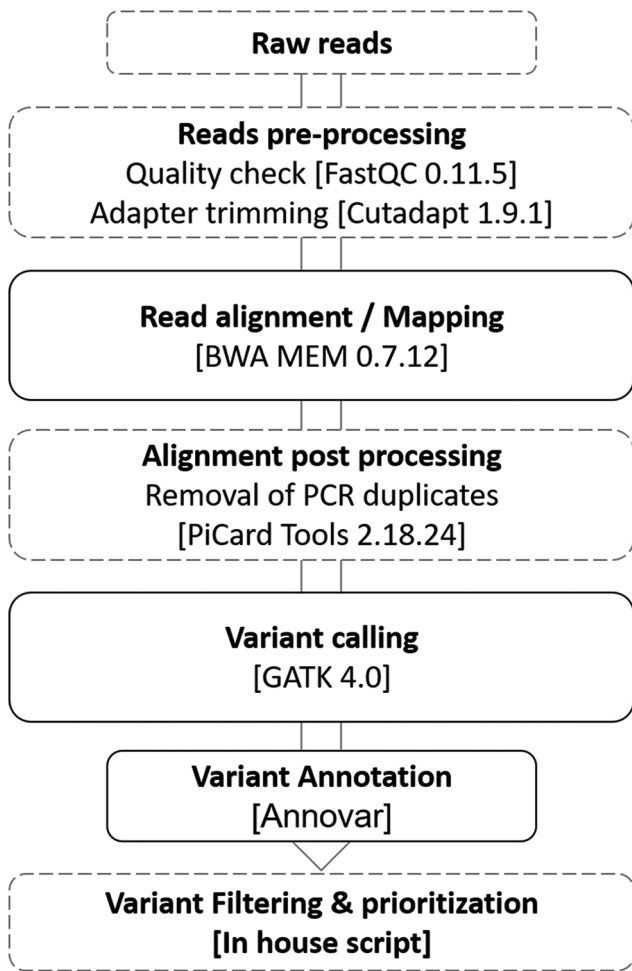
- glaucoma (Review). *Int J Oncol* 2013;43:1357-67.
24. Stelzer G, Plaschkes I, Oz-Levi D, Alkelai A, Olender T, Zimmerman S, *et al.* VarElect: The phenotype-based variation prioritizer of the GeneCards suite. *BMC Genomics* 2016;17:444.
  25. Fernández-Martínez L, Letteboer S, Mardin CY, Weisschuh N, Gramer E, Weber BHf, *et al.* Evidence for RPGRIP1 gene as risk factor for primary open angle glaucoma. *Eur J Hum Genet* 2011;19:445-51.
  26. Roepman R, Bernoud-Hubac N, Schick DE, Maugeri A, Berger W, Ropers H-H, *et al.* The retinitis pigmentosa GTPase regulator (RPGR) interacts with novel transport-like proteins in the outer segments of rod photoreceptors. *Hum Mol Genet* 2000;9:2095-105.
  27. Martin C-A, Ahmad I, Klingseisen A, Hussain MS, Bicknell LS, Leitch A, *et al.* Mutations in PLK4, encoding a master regulator of centriole biogenesis, cause microcephaly, growth failure and retinopathy. *Nat Genet* 2014;46:1283-92.
  28. Ricard CS, Pena JD, Hernandez MR. Differential expression of neural cell adhesion molecule isoforms in normal and glaucomatous human optic nerve heads. *Brain Res Mol Brain Res* 1999;74:69-82.
  29. Fan BJ, Wang DY, Pasquale LR, Haines JL, Wiggs JL. Genetic variants associated with optic nerve vertical cup-to-disc ratio are risk factors for primary open angle glaucoma in a US Caucasian population. *Invest Ophthalmol Vis Sci* 2011;52:1788-92.
  30. Wiggs JL, Allingham RR, Hossain A, Kern J, Auguste J, DelBono EA, *et al.* Genome-wide scan for adult onset primary open angle glaucoma. *Hum Mol Genet* 2000;9:1109-17.
  31. Booi J, Florijn RJ, ten Brink JB, Loves W, Meire F, van Schooneveld MJ, *et al.* Identification of mutations in the AIPL1, CRB1, GUCY2D, RPE65, and RPGRIP1 genes in patients with juvenile retinitis pigmentosa. *J Med Genet* 2005;42:e67.
  32. Dryja TP, Adams SM, Grimsby JL, McGee TL, Hong DH, Li T, *et al.* Null RPGRIP1 alleles in patients with Leber congenital amaurosis. *Am J Hum Genet* 2001;68:1295-8.
  33. Castagnet P, Mavlyutov T, Cai Y, Zhong F, Ferreira P. RPGRIP1s with distinct neuronal localization and biochemical properties associate selectively with RanBP2 in amacrine neurons. *Hum Mol Genet* 2003;12:1847-63.
  34. Ferreira P. Identification of novel murine- and human-specific RPGRIP1 splice variants with distinct expression profiles and subcellular localization. *Invest Ophthalmol Vis Sci* 2005;46:1882-90.
  35. Mavlyutov TA, Zhao H, Ferreira PA. Species-specific subcellular localization of RPGR and RPGRIP isoforms: Implications for the phenotypic variability of congenital retinopathies among species. *Hum Mol Genet* 2002;11:1899-907.
  36. Patnaik SR, Kotapati Raghupathy R, Zhang X, Mansfield D, Shu X. The role of RPGR and its interacting proteins in ciliopathies. *J Ophthalmol* 2015;2015:414781.
  37. Luo N, Conwell MD, Chen X, Insinna CI, Westlake CJ, Cantor LB, *et al.* Primary cilia signaling mediates intraocular pressure sensation. *Proc Natl Acad Sci U S A* 2014;111:12871-6.
  38. Gakovic M, Shu X, Kasioulis I, Carpanini S, Moraga I, Wright A. The role of RPGR in cilia formation and actin stability. *Hum Mol Genet* 2011;20:4840-50.
  39. Abiko H, Fujiwara S, Ohashi K, Hiataru R, Mashiko T, Sakamoto N, *et al.* Rho-guanine nucleotide exchange factors involved in cyclic stretch-induced reorientation of vascular endothelial cells. *J Cell Sci* 2015;128:1683-95.
  40. Wang K, Li M, Hakonarson H. ANNOVAR: Functional annotation of genetic variants from high-throughput sequencing data. *Nucleic Acids Res* 2010;38:e164.



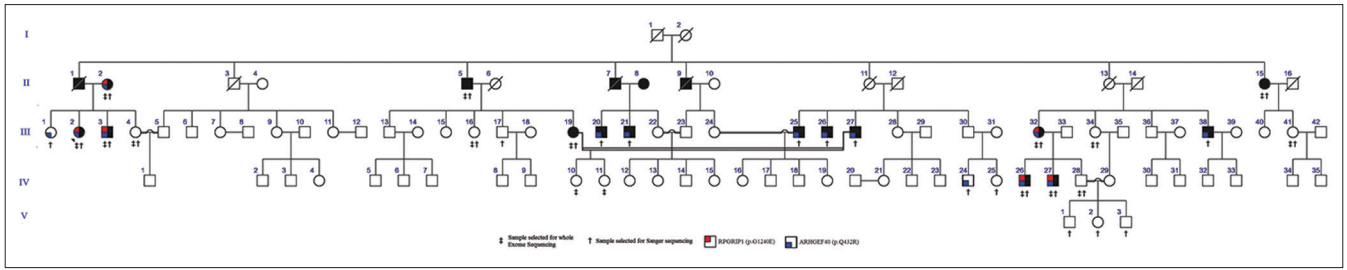
**Supplementary Table 1: Clinical data available for POAG study subject**

Pedigree symbol	Age at diagnosis (years)	Max IOP (mm Hg)	CCT (microns)	Cup-To-disc ratio at first exam		Humphrey visual field analyzer Data (SITA 24-2/10-2*)				Glaucoma surgeries	Comorbidity
				OD	OS	MD OD (dB)	PSD OD (dB)	MD OS (dB)	PSD OS (dB)		
III-2	23	24	522	0.7	0.4	-2.89	8.07	-0.26	1.1	None	None
III-3	34	26	527	0.7	0.8	-8.36	8.36	-10.37	10.01	None	None
II-2	65	15	506.5	0.8	0.8	-6.05	2.42	-9.05	4.93	None	None
III-20	45	21	565.5	0.7	0.6	-7.32	4.07	-9.64	5.71	None	None
III-21	40	14	519	0.6	0.6	NA	NA	NA	NA	None	None
II-5	56	17	NA	0.9	NA	NA	NA	NA	NA	Trabeculectomy	CRVO
III-19	51	24	552	0.5	0.6	-8.8	6.61	-10.09	8.37	None	None
III-32	NA	26	519	0.9	0.9	NA	NA	NA	NA	None	None
IV-26	NA	36	528.5	0.9	0.9	NA	NA	NA	NA	Trabeculectomy	CRVO
IV-27	NA	18	617	0.8	0.8	NA	NA	NA	NA	None	None
III-38	68	22	535	0.6	0.6	-3.63	1.63	-4.42	2.24	None	None
III-26	66	18	486	0.8	0.8	-14.24	8.12	-12.56	9.56	None	CRVO
III-25	48	20	470	0.9	NA	-26.62	9.97	NA	NA	Trabeculectomy	CRVO
II-15	53	34	NA	NA	0.9	NA	NA	-23.57	8.25	Trabeculectomy	CRVO
Mean	50	22.5	529		0.74	-6.18	5.19	-9.63	5.8	NA	NA
Std Dev	14	6.5	37.8		0.14	2.46	2.90	7.19	3.31		

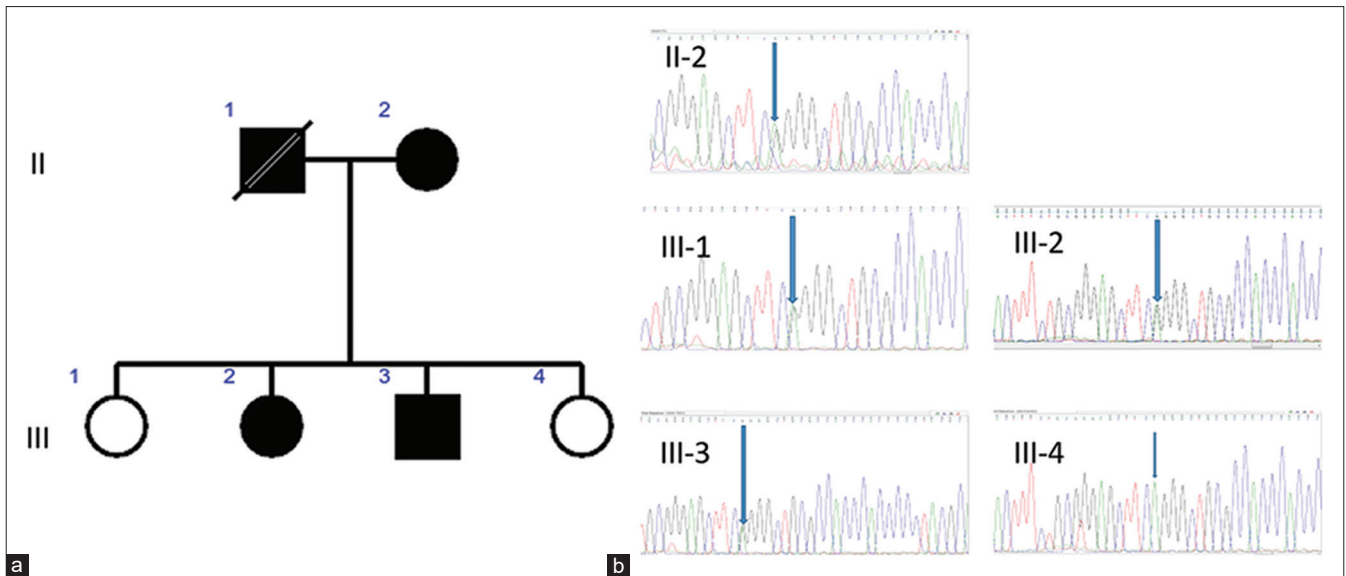
POAG=primary open-angle glaucoma, IOP=intraocular pressure, CCT=central corneal thickness, SITA=Swedish interactive threshold algorithm, MD=mean deviation, PSD=pattern standard deviation, NA=not available, CRVO=central retinal vein occlusion. Nineteen family members were affected with POAG. Five members were dead and not included in the table



Supplementary Figure 1: Modular pipeline



**Supplementary Figure 2:** Pedigree from south India Family. Family members diagnosed with primary open-angle glaucoma are shaded with black



**Supplementary Figure 3:** Pedigree of selected family members from large south India family as shown in supplementary Figure 1 (a). Sanger sequencing results of novel variant c.A1295G in ARGEF40 gene (marked with down arrow). The variant is detected in the family members II-2, III-1, III-2, and III-3 (b)