



Successful ABO-incompatible kidney transplantation and SARS-CoV-2-specific immune monitoring in a patient recovered from coronavirus infection

Su Yeon Hong^{1,2}, Hyunjoo Bae³, Sun Cheol Park⁴, Chul Woo Yang^{1,2}, Eun-Jee Oh⁵, Byung Ha Chung^{1,2}

¹Transplant Research Center, Seoul St. Mary's Hospital, College of Medicine, The Catholic University of Korea, Seoul, Republic of Korea

²Division of Nephrology, Department of Internal Medicine, Seoul St. Mary's Hospital, College of Medicine, The Catholic University of Korea, Seoul, Republic of Korea

³Department of Biomedical Science, Graduate School, College of Medicine, The Catholic University of Korea, Seoul, Republic of Korea

⁴Department of Surgery, Seoul St. Mary's Hospital, College of Medicine, The Catholic University of Korea, Seoul, Republic of Korea

⁵Department of Laboratory Medicine, Seoul St. Mary's Hospital, College of Medicine, The Catholic University of Korea, Seoul, Republic of Korea

Coronavirus disease 2019 (COVID-19), the rapidly ongoing pandemic caused by spread of severe acute respiratory syndrome coronavirus 2 (SARS-CoV-2), led to a significant impact on transplant systems [1]. Because of intensified induction therapy as well as maintenance of immune suppressant, there is significant concern about transplantation after COVID-19 infection. Meanwhile, the immune response to SARS-CoV-2 is crucial in detecting primary infection and in confirming postinfection recovery or reinfection [2]. In this case, we serially monitored humoral and cellular immunity to SARS-CoV-2 in patients who were diagnosed with COVID-19 during preparation for an ABO-incompatible kidney transplantation (ABO icKT) and who successfully received kidney transplantation (KT) without

reinfection or complication before or after.

A 47-year-old male patient with chronic kidney disease (stage 5) secondary to diabetic nephropathy for which he was on hemodialysis was planned for a living donor ABO icKT. The potential donor was his spouse, and the isoagglutinin titer was 1:16. According to our center's protocol, we infused rituximab 4 weeks before KT and planned three plasmapheresis procedures. However, 3 weeks prior to KT, the patient was diagnosed as COVID-19 positive by reverse transcriptase-polymerase chain reaction (SARS-CoV-2 test). Fortunately, the disease course was not severe, and he only required quarantine and symptomatic treatment.

Both humoral and cellular immunity against SARS-CoV-2 had been assessed approximately 2 months prior to KT.

Received: February 12, 2022; **Revised:** February 26, 2022; **Accepted:** February 26, 2022

Correspondence: Eun-Jee Oh

Department of Laboratory Medicine, Seoul St. Mary's Hospital, College of Medicine, The Catholic University of Korea, 222 Banpo-daero, Seocho-gu, Seoul 06591, Republic of Korea. E-mail: ejoh@catholic.ac.kr
ORCID: <https://orcid.org/0000-0001-5870-915X>

Byung Ha Chung

Division of Nephrology, Department of Internal Medicine, Seoul St. Mary's Hospital, College of Medicine, The Catholic University of Korea, 222 Banpo-daero, Seocho-gu, Seoul 06591, Republic of Korea. E-mail: chungbh@catholic.ac.kr
ORCID: <https://orcid.org/0000-0003-0048-5717>

Eun-Jee Oh and Byung Ha Chung contributed equally to this work as corresponding authors.

Copyright © 2022 by The Korean Society of Nephrology

© This is an Open Access article distributed under the terms of the Creative Commons Attribution Non-Commercial and No Derivatives License (<http://creativecommons.org/licenses/by-nc-nd/4.0/>) which permits unrestricted non-commercial use, distribution of the material without any modifications, and reproduction in any medium, provided the original works properly cited.

Humoral immunity of COVID-19 was detected by measuring anti-SARS-CoV-2 antibodies (Elecsys Anti-SARS-CoV-2 chemiluminescent immunoassay, cutoff of 0.8; Roche Diagnostics, Rotkreuz, Switzerland). That antibody level in serum samples was 0.77 U/mL. The low pre-KT humoral immunity level could be due to the immunosuppressive effect of rituximab for ABO incompatibility. Cellular immunity against SARS-CoV-2 was detected by enzyme-linked immune-spot (ELISPOT, the T-SPOT Discovery SARS-Cov-2 assay kit; Oxford Immunotec, Abingdon-on-Thames, London, UK) and flow cytometry of T cell, regulatory T cell (Treg), and natural killer (NK) subset cytokine expression. Our case was characterized by predominant CD4+ and CD8+ T cell responses, which suggests that he had developed SARS-CoV-2-specific T cell responses [3] (Fig. 1). Expression of Treg and NK subset cytokine also was detected. In Fig. 2A, adaptive immunity to SARS-CoV-2 virus was confirmed by measurement of SARS-CoV-2-specific T cell

immunity (spike protein, N protein, and M protein) by the ELISPOT method.

Therefore, we decided to proceed with the ABO icKT. The patient had received rituximab before the COVID-19 diagnosis, and CD19 and CD20 cell counts in peripheral blood were <0.1%. Hence, the patient underwent only plasmapheresis three times just before KT. Antibody measurement and ELISPOT assay were performed at post-KT intervals of 1 and 3 months. One month after KT, the antibody level was less than 0.4 U/mL, and ELISPOT assay and flow cytometry results also showed decreased cellular immune response (Fig. 2B). Three months after KT, CD8+ absolute cell count abruptly rebounded, but NK and Treg subset expression remained low. The patient remained stable with an estimated glomerular filtration rate of 104 mL/min/1.73 m² up to 10 months posttransplant.

There are approximately four previous case reports of successful transplantation in patients with a mild disease

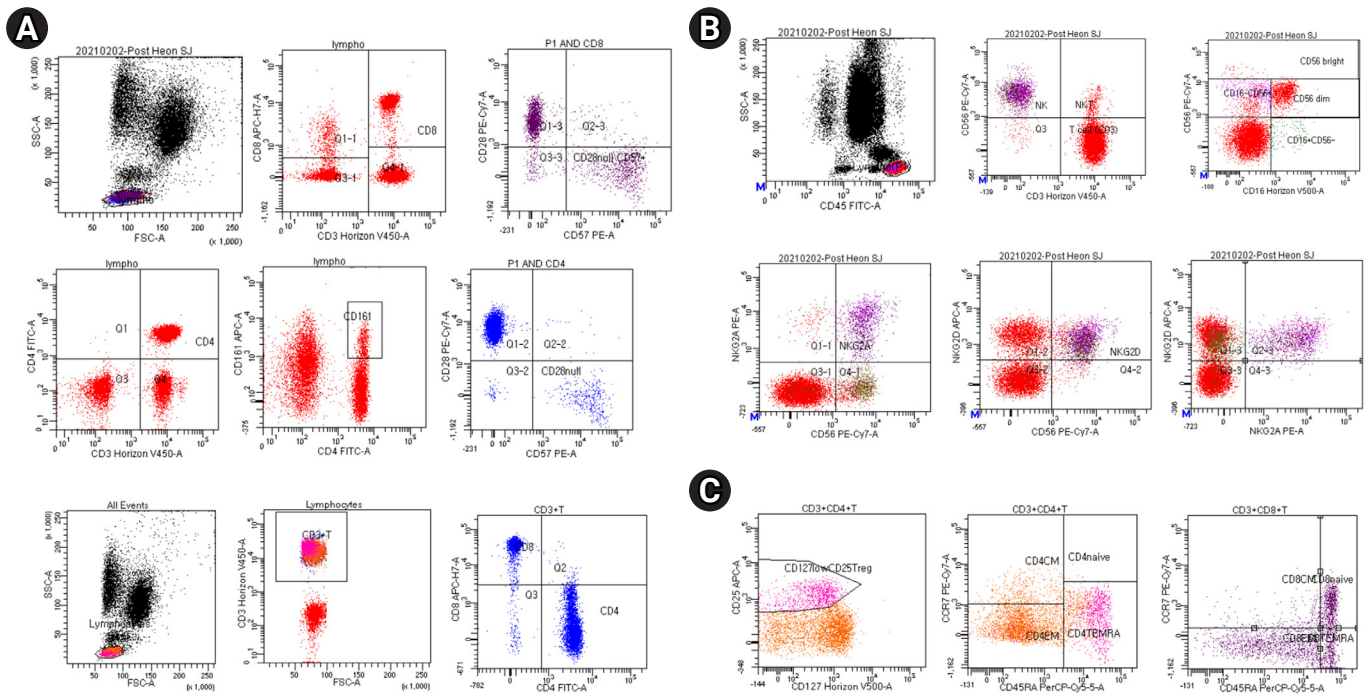


Figure 1. Expression of T cell, NK cell, and Treg subset cytokine as detected by flow cytometry from COVID-19 infection had recovered at 6 weeks after COVID-19 diagnosis. (A) T cells (CD8+ and CD4+) producing cytokines were detectable in flow cytometry. (B) NK (CD16- CD56+ and CD16+ CD56-) subsets producing cytokines were detectable in flow cytometry. (C) Treg (CD25+ CD127low) subsets producing cytokines were detectable by flow cytometry. Flow cytometry results confirm adaptive immunity toward COVID-19 (SARS-CoV-2) in the case patient.

COVID-19, coronavirus disease-19; NK, natural killer; SARS-CoV2, severe acute respiratory syndrome coronavirus 2; Treg, regulatory T cell.

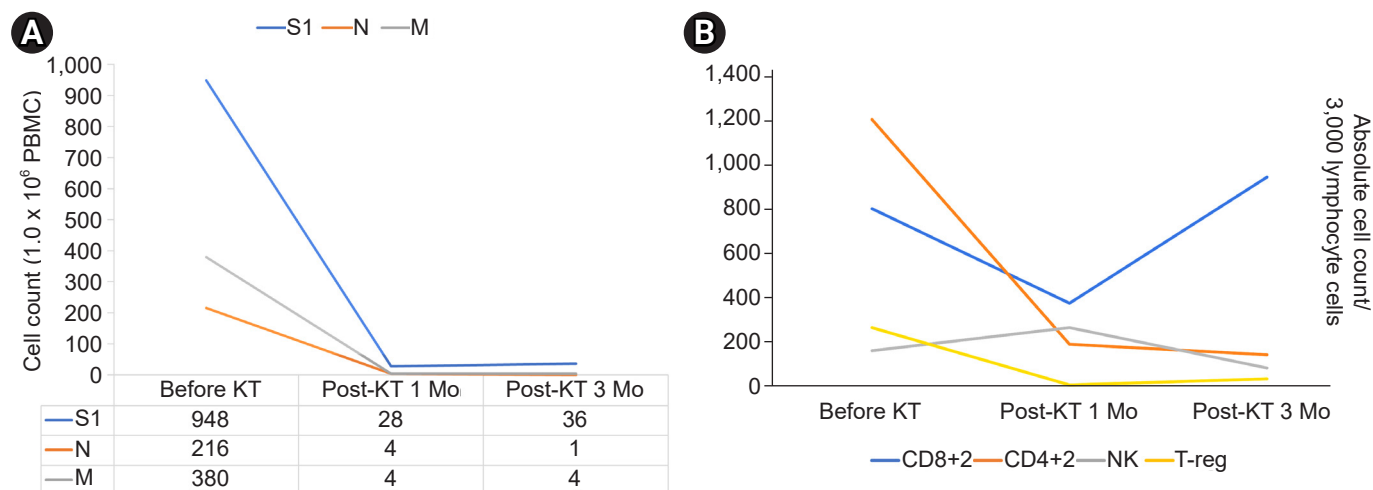


Figure 2. Pre- and posttransplant T cell immunity of the patient. (A) SARS-CoV-2-specific T cell immunity by ELISPOT (spike protein S1, N protein, and M protein). Adaptive immunity to SARS-CoV-2 virus was confirmed by SARS-CoV-2-specific protein (spike protein, N protein, and M protein) detection by the ELISPOT method. After KT, SARS-CoV-2-specific protein level decreased in correlation with flow cytometry results of T cell, Treg, and NK subsets cytokine expression. Decreased adaptive immunity was retained up to 3 months after KT. (B) Adaptive immune response of cytokine expression of T cell, NK and Treg subsets detected by flow cytometry (CD8+, CD4+, NK, and Treg expression). After recovery from COVID-19 infection, our patient showed adaptive immunity toward SARS-CoV-2 before KT, with absolute cell count/3,000 lymphocytes by flow cytometry. T-cell immunity was expressed as CD4+ and CD8+, Treg was expressed as CD25+ CD127low, and the NK subset was expressed as CD16- CD56+ and CD16+ CD56-. The CD8+ and CD4+ absolute cell count decreased at 1 month after KT. The CD8+ absolute cell count abruptly rebounded at 3 months after KT, but CD4+ absolute cell count remained low. Expression of NK and Treg subset also remained low at 3 months after KT. COVID-19, coronavirus disease-19; ELISPOT, enzyme-linked immune absorbent spot; KT, kidney transplant; M, M protein; N, N protein; NK, natural killer; PBMC, peripheral blood mononuclear cell; S1, spike protein; SARS-CoV2, severe acute respiratory syndrome coronavirus 2; Treg, regulatory T cells.

course of COVID-19 and two case reports of such patients with a severe disease course [4-8]. No previous case report or cohort study showed adaptive immunity in both precise humoral and cellular patterns. T cell-mediated immune response is required for protection against SARS-CoV-2 and is a surrogate of acquired immune protection from reinfection [2]. Though detected humoral immunity value was below the cutoff value, we verified adaptive immunity by detection of more precise cellular immunity with ELISPOT.

In conclusion, our data are reassuring that functional SARS-CoV-2-specific T cell responses are acquired as soon as 6 weeks after initial COVID-19 diagnosis and retained for 6 months following infection. This suggests that adaptive T cell immunity is sustained, and the ideal wait time for transplant could be as soon as only 6 weeks after initial diagnosis of COVID-19. Most KT recipients slowly recover their immune status as immunosuppressant dosages are tapered over time. Our patient recovered his immune

status, and CD8+ expression level was normal at 3 months after KT. This case is promising for patients who have suffered from COVID-19 before KT and suggests that recovery from COVID-19 and the presence of T cell immunity against SARS-CoV-2 could be a surrogate marker for safe and successful KT.

Conflicts of interest

All authors have no conflicts of interest to declare.

Funding

This work was supported by a National Research Foundation of Korea (NRF) grant funded by the Korean government (MSIP; NRF-2020R1A2B5B01001859) and was supported by a grant of the Korean Health Technology R&D Project, Ministry of Health & Welfare, Republic of Korea (grant No. HI20C0317).

Authors' contributions

Conceptualization: SCP, SYH

Data curation: HB, SCP, EJO, SYH

Formal analysis: HB, EJO, SYH

Methodology: HB

Funding acquisition: BHC

Supervision: CWY, EJO, BHC

Visualization: HB, SCP, CWY, EJO

Writing-original draft: SYH

Writing-review & editing: BHC

All authors read and approved the final manuscript.

ORCID

Su Yeon Hong, <https://orcid.org/0000-0002-7574-5045>

Hyunjoo Bae, <https://orcid.org/0000-0001-5143-6806>

Sun Cheol Park, <https://orcid.org/0000-0003-2701-0180>

Chul Woo Yang, <https://orcid.org/0000-0001-9796-636X>

Eun-Jee Oh, <https://orcid.org/0000-0001-5870-915X>

Byung Ha Chung, <https://orcid.org/0000-0003-0048-5717>

References

1. Ahn C, Amer H, Anglicheau D, et al. Global transplantation COVID report March 2020. *Transplantation* 2020;104:1974-1983.
2. Cromer D, Juno JA, Khoury D, et al. Prospects for durable immune control of SARS-CoV-2 and prevention of reinfection. *Nat Rev Immunol* 2021;21:395-404.
3. Faresjö M. Enzyme linked immuno-spot; a useful tool in the search for elusive immune markers in common pediatric immunological diseases. *Cells* 2012;1:141-152.
4. Kanchi P, Sambandam S, Siddhan R, Soundappan S, Vaseekaran VP, Gupta A. Successful kidney transplantation after COVID-19 infection in two cases. *Nefrologia (Engl Ed)* 2021;42:217-219.
5. Pascual J. Kidney transplant after a COVID-19. *Trasplante renal después de una COVID-19. Nefrologia (Engl Ed)* 2021;41:91-94.
6. Tuschen K, Anders J, Elfanish A, et al. Renal transplantation after recovery from COVID-19 - a case report with implications for transplant programs in the face of the ongoing corona-pandemic. *BMC Nephrol* 2021;22:251.
7. Varotti G, Dodi F, Garibotto G, Fontana I. Successful kidney transplantation after COVID-19. *Transpl Int* 2020;33:1333-1334.
8. Waghmare I, Shingare A, Bahadur M. ABO incompatible kidney transplant after recovery from severe COVID-19 pneumonia. *Korean J Transplant* 2020;34(Suppl 1):S56.