

Exposure to Air Pollution and Survival in Follow-Up after Hepatocellular Carcinoma

Wei-Shan Chin^a Shin-Chun Pan^b Ching-Chun Huang^c Pei-Jer Chen^{d, e}
Yue Leon Guo^{b, c, f}

^aSchool of Nursing, College of Medicine, National Taiwan University (NTU) and NTU Hospital, Taipei, Taiwan;

^bNational Institute of Environmental Health Sciences, National Health Research Institutes, Miaoli County, Taiwan;

^cDepartment of Environmental and Occupational Medicine, National Taiwan University (NTU) College of Medicine and NTU Hospital, Taipei, Taiwan; ^dGraduate Institute of Microbiology, NTU College of Medicine, Taipei, Taiwan;

^eDepartment of Gastroenterology, NTU Hospital, Taipei, Taiwan; ^fInstitute of Environmental and Occupational Health Sciences, National Taiwan University College of Public Health, Taipei, Taiwan

Keywords

Air pollution · Hepatocellular carcinoma · Liver cancer · Cancer mortality · Follow-up study

Abstract

Introduction: Air pollutants are classified as carcinogens by the International Agency for Research on Cancer. Long-term exposure to ambient particulate matter with an aerodiameter of 2.5 μm or lower ($\text{PM}_{2.5}$) has been reported to be linked with increased mortality due to hepatocellular carcinoma (HCC). However, the effects of air pollutants other than $\text{PM}_{2.5}$ on HCC-related mortality have not been fully investigated. Accordingly, we conducted this study to assess the effect of long-term exposure to air pollutants ($\text{PM}_{2.5}$ and nitrogen dioxide [NO_2]) on HCC-related mortality. **Method:** In 2005, the Taiwan Liver Cancer Network (TLCN) was established by the National Research Program for Genomic Medicine to recruit liver cancer patients from 5 major medical centers in northern, central, and southern Taiwan. The TLCN had successfully recruited 9,344 patients by the end of 2018. In this study, we included 1,000 patients randomly sampled from the TLCN to assess the effect of exposure to air pollutants on

HCC mortality after HCC diagnosis. Daily averages of $\text{PM}_{2.5}$ and NO_2 concentrations were retrieved from 77 air quality-monitoring stations and interpolated to the townships of patients' residences by using the Kriging method. The effect of air pollutants on HCC survival was assessed using a Cox proportional hazards model. **Results:** A total of 940 patients were included in the analysis. After adjusting for potential confounders and mutually adjusting for co-pollutants, we observed that the hazards ratio (95% confidence interval) for HCC-related mortality for every 1- $\mu\text{g}/\text{m}^3$ increase in $\text{PM}_{2.5}$ concentration was 1.11 (1.08–1.14) and that for every 1-ppb increase in NO_2 concentration was 1.08 (1.03–1.13). **Conclusion:** Our study suggests that long-term exposure to $\text{PM}_{2.5}$ and NO_2 was associated with decreased survival time in patients with HCC in Taiwan.

© 2022 The Author(s).

Published by S. Karger AG, Basel

Introduction

Ambient air pollution is one of the leading environmental risk factors for all noncommunicable diseases worldwide [1]. In 2013, on the basis of evidence compiled

from animal and epidemiological studies, the International Agency for Research on Cancer classified outdoor air pollution overall and the corresponding particulate matter with an aerodiameter of 2.5 μm or lower ($\text{PM}_{2.5}$) individually as group 1 human carcinogens for lung cancer [2]. In addition to lung cancer, studies have increasingly reported the adverse effects of outdoor air pollution on outcomes for cancers in other organs, namely breast, bladder, and liver cancers [3].

Liver cancer was the sixth most commonly diagnosed cancer and the third leading cause of cancer death worldwide in 2020, with 905,677 new liver cancer cases and 830,000 deaths [4]. According to annual projections from the World Health Organization, more than 1.0 million patients will die of liver cancer in 2040 [5]. Hepatocellular carcinoma (HCC) is the most common form of liver cancer and accounts for 90% of liver cancer cases [6]. The highest incidence of and mortality for HCC are observed in East Asia, Southeast Asia, and North and West Africa [4]. The contribution of different etiologies to liver cancer mortality varies markedly between countries and regions [7, 8]. For example, hepatitis B infection is the most common cause of HCC in Asia, and hepatitis C infection is the most common cause in Europe [8]. Additionally, nonviral risk factors, such as aflatoxin-contaminated food, heavy alcohol intake, obesity, and smoking, are becoming more relevant to the increase in liver cancer [9].

Recently, exposure to ambient air pollution has been linked with an increased risk of liver abnormalities [10–12] and cancer [13]. Epidemiological evidence indicates that exposure to ambient $\text{PM}_{2.5}$ is correlated with an increased risk of liver cancer mortality [14–17]. However, some of the limitations of previous studies are that they did not include information on individual or tumor characteristics [14, 16, 17], and they used data obtained directly from air-monitoring stations to conduct ecological exposure assessments [15], and they did not distinguish between death due to any cause and death related to liver cancer [15–17]; these factors may lead to biased results. Furthermore, none of the studies have determined the effect of air pollutants other than $\text{PM}_{2.5}$ on liver cancer-related death.

To fill the aforementioned research gap, the present study examined the associations of long-term exposure to ambient $\text{PM}_{2.5}$ and nitrogen dioxide (NO_2) with HCC-related mortality after HCC diagnosis in a population selected from a large cohort in Taiwan. We performed a spatial exposure assessment and extensive control for potential confounders such as alcohol consumption, smoking, and tumor characteristics.

Material and Methods

Participants

Participants were selected from the Taiwan Liver Cancer Network (TLCN). The TLCN was established in 2005 for collecting regionally representative liver cancer data. The TLCN is a biobank that includes the demographic characteristics and samples of liver cancer patients from the 5 major medical centers in northern, central, and southern Taiwan [18]. The medical centers follow a common protocol to recruit patients with liver cancer, collect specimens, collect clinical pathology information, and gather data on demographic characteristics and lifestyle. All samples and data are reported to and saved in the National Health Research Institutes Biobank of Taiwan. During the follow-up period, the information of patients was regularly updated according to the medical records and the death record of the Department of Health of Taiwan [19]. If researchers are interested in liver cancer research, they can obtain the data through a formal application to the TLCN. By the end of 2018, the TLCN had recruited 9,344 patients with liver tumors [18], of whom 85% were patients with HCC. In this study, 1,000 HCC patients with Barcelona Clinic Liver Cancer staging were randomly selected from the TLCN according to their cities of residence and subsequently followed until the end of 2018.

Exposure Assessment

We collected data regarding $\text{PM}_{2.5}$ and the traffic-related air pollutant NO_2 from 77 fixed-site air-monitoring stations in Taiwan [20]. The hourly concentrations of $\text{PM}_{2.5}$ and NO_2 were automatically monitored. Air quality-related data were retrieved from these stations for the purpose of further spatial interpolation. The ordinary Kriging method was applied to interpolate exposure concentrations onto a regular grid (250 m \times 250 m) across Taiwan by using ArcGIS Desktop (version 10; ESRI Inc., Redlands, CA, USA). The interpolated concentrations were then averaged at the township level to derive average daily township exposure levels of air pollutants [21]. These exposure levels were linked with patients' township of residence, and the average concentrations during the follow-up period were calculated as personal exposure levels for each patient.

Covariates

Data on demographics, smoking and drinking history (excessive drinking: 30 g/day for male, 20 g/day for female) [22], and body mass index were obtained at recruitment. The serum levels of alanine aminotransferase, aspartate aminotransferase (AST), alpha-fetoprotein (AFP), HBV-DNA load ($\text{IU} \times 10^6/\text{mL}$), hepatitis B surface antigen, and hepatitis C antibody (anti-HCV) were also measured at recruitment. Tumor data, including the Barcelona Clinic Liver Cancer stage, the pathologic prognostic stage was the TNM staging system according to the American Joint Committee on Cancer (AJCC) and the International Union Against Cancer (UICC), 7th edition, degree of vascular invasion was determined by a histopathological examination of resected HCCs (0: absent, 1: capsular vein invasion, 2: portal vein tumor thrombosis [micro], 3: portal vein tumor thrombosis [grossly], 4: portal vein tumor thrombosis [both]), Child-Pugh score, and tumor size (cm), were also obtained at recruitment.

Table 1. The characteristics of participants (N = 940)

Variables	n (%)	Mean ± SD
Age, years		59.9±12.4
<65	589 (62.7)	
≥65	351 (37.3)	
Sex		
Male	732 (77.9)	
Female	208 (22.1)	
BMI		23.8±3.5
Education, years		
≤6	401 (42.7)	
7–12	348 (37.0)	
>12	191 (20.3)	
Marital status		
Married	793 (84.4)	
Unmarried (single/divorced or separated/widowers and widows)	147 (15.6)	
Smoking		
Never	481 (51.2)	
Ever/now	459 (48.8)	
Drinking		
Never	571 (60.7)	
Ever/now	369 (39.3)	
Excessive drinking		
No/others	706 (75.1)	
Yes	234 (24.9)	
Vascular invasion		
0	470 (50.0)	
1	129 (13.7)	
2	282 (30.0)	
3	6 (0.7)	
4	53 (5.6)	
Cirrhosis		
No	523 (55.6)	
Yes	417 (44.4)	
BCLC stage		
0	152 (16.2)	
A	404 (43.0)	
B	299 (31.8)	
C	85 (9.0)	
Pathologic prognostic stage		
I	360 (38.3)	
II	395 (42.0)	
IIIA	95 (10.1)	
IIIB	79 (8.4)	
IIIC	2 (0.2)	
IVA	5 (0.5)	
IVB	4 (0.4)	
Child-Pugh score		
A	163 (17.3)	
B	776 (82.6)	
C	1 (0.1)	
HBV-DNA load (IU × 10 ⁶ /mL)		
≤0.11 (Q3)	815 (86.7)	
>0.11	125 (13.3)	
HBsAg		
Positive	513 (54.6)	
Negative	417 (44.4)	
Unknown	10 (1.0)	

Table 1 (continued)

Variables	n (%)	Mean ± SD
Anti-HCV		
Positive	354 (37.6)	
Negative	559 (59.5)	
Unknown	27 (2.9)	
AST		53.1±53.7
ALT		58.2±63.9
AFP		3,883.5±22,357.3
Tumor size		5.0±3.8
Survival duration, days		1,982.2±1,119.0
Cancer death during the study period		
No	680 (72.3)	
Yes	260 (27.7)	

ALT, alanine aminotransferase; HBsAg, hepatitis B surface antigen; SD, standard deviation.

Table 2. The exposure level of air pollutants during the follow-up period

Variable	Mean ± SD	p25	p75	IQR
PM _{2.5} , µg/m ³	31.71±6.69	26.48	35.81	9.32
NO ₂ , ppb	16.74±4.04	13.85	19.53	5.67
Temperature, °C	23.99±1.38	23.20	25.12	1.92
Relative humidity, %	74.90±2.01	73.46	76.18	2.72

SD, standard deviation.

Statistical Analysis

The distribution of individual characteristics, tumor data, and HCC-related deaths was analyzed using descriptive statistics. For patients whose death was related to HCC and occurred between the date of HCC diagnosis and December 31, 2018, the event date was defined as the date of death. For patients without HCC-related mortality between the date of HCC diagnosis and the end of 2018, the event date was defined as the date of withdrawal from the TLCN, death, or the end of 2018. Therefore, the total follow-up period for all patients was the period between the date of HCC diagnosis and the event date.

Univariate and multivariate Cox proportional hazards regression models were used to calculate hazard ratios (HRs) and 95% confidence intervals (CIs) for liver cancer-related deaths. Patients without HCC-related death between the date of HCC diagnosis and the end of 2018 were considered to be censored. The follow-up period for censored patients spanned from the date of HCC diagnosis to the date of withdrawal from the TLCN, death through other causes, or study end (the end of 2018). For patients with HCC-related death, their follow-up period spanned from the date of HCC diagnosis to the date of HCC-related death. We added covariates that were significant in the univariate Cox proportional hazards regression models to single-pollutant and 2-pollutant models to analyze the adjusted relative risks for PM_{2.5} and NO₂. Adjusted HRs and CIs were estimated for every 1-µg/m³ increase in PM_{2.5} and every 1-ppb increase in NO₂ concentrations. We per-

formed all analyses using SAS (version 9.4; SAS Institute Inc., Cary, NC, USA) and considered a 2-sided *p* value of <0.05 as statistically significant.

Results

We selected 1,000 patients with HCC from 22 cities in Taiwan. After excluding 46 recurrent cases and 14 patients who did not live on the main island of Taiwan, we included a total of 940 patients in our final analysis.

The demographic characteristics and tumor data of the study patients are summarized in Table 1. The average age of the patients was 59.9 years (standard deviation = 12.4), and 77.9% of the patients were men. Furthermore, 57.3% of the patients had an education level of junior high school or above. More than half of the patients reported being nonsmokers, and approximately 60% of the patients reported never drinking alcohol. Approximately 55% of patients had a positive hepatitis B surface antigen, and 37.6% of them were seropositive for anti-HCV. Baseline measurements of serum levels (alanine aminotrans-

Table 3. The crude HR of relevant factors for death

Variable	HR (95% CI)
Age, years	
<65	1.00
≥65	1.27 (0.99–1.63)
Sex	
Female	1.00
Male	1.13 (0.83–1.54)
BMI	0.97 (0.94–1.01)
Education, years	
≤6	1.00
7–12	0.94 (0.72–1.24)
>12	0.80 (0.57–1.11)
Marital status	
Married	1.00
Unmarried (single/devoice or separate/widowers and widows)	1.56 (1.16–2.12)
Smoking	
Never	1.00
Ever/now	1.18 (0.93–1.51)
Drinking	
Never	1.00
Ever/now	1.06 (0.83–1.36)
Excessive drinking	
No/others	1.00
Yes	1.08 (0.82–1.43)
Vascular invasion	
0	
1	1.69 (1.12–2.56)
2	3.37 (2.53–4.49)
3	7.15 (2.26–22.67)
4	5.50 (3.59–8.42)
Cirrhosis	
No	1.00
Yes	1.08 (0.84–1.37)
Pathologic prognostic stage	
I	1.00
II	2.43 (1.75–3.38)
IIIA/IIIB	5.31 (3.75–7.51)
IIIC/IVA/IVB	10.75 (5.10–22.69)
Child-Pugh score	
A	1.00
B/C	1.17 (0.84–1.63)
HBV-DNA load (IU × 10 ⁶ /mL)	
≤0.11 (Q3)	1.00
>0.11	1.54 (1.13–2.11)
HBsAg	
Negative	1.00
Positive	1.09 (0.85–1.40)
Anti-HCV	
Negative	1.00
Positive	0.71 (0.54–0.93)
ALT, µg/dL	
≤40	1.00
>40	1.00 (0.78–1.31)
AST, µg/dL	
≤40	1.00
>40	1.71 (1.32–2.23)
AFP, µg/dL	
≤40	1.00
>40	1.87 (1.37–2.32)
Tumor size, cm	
≤5	1.00
>5	3.09 (2.42–3.95)

ALT, alanine aminotransferase; HBsAg, hepatitis B surface antigen.

ferase, AST, AFP, and HBV-DNA load) and tumor data are also presented in Table 1. The distribution of the patients' air pollutant exposure levels and climatic factors during the follow-up period is shown in Table 2. Table 3 presents the crude HRs for HCC-related death. Unmarried patients; patients with higher serum levels of AST, AFP, and HBV-DNA load at recruitment; and patients with higher HCC grades and stages were associated with a higher risk of HCC-related mortality. Table 4 demonstrates the effect of air pollutant exposure on HCC-related mortality. The single-pollutant model was adjusted for age; gender; body mass index; marital status; serum levels of AST, AFP, HBV-DNA load, and anti-HCV; the year of diagnosis; vascular invasion; pathologic prognostic stage; Child-Pugh score; tumor size; and climatic factors. After adjustment, we observed that every 1-µg/m³ increase in PM_{2.5} and every 1-ppb increase in NO₂ were significantly associated with an increased risk of HCC-related mortality (aHRs [95% CIs] = 1.11 [1.09–1.14] and 1.08 [1.03–1.13], respectively). In the two-pollutant model, the effect of every 1-µg/m³ increase in PM_{2.5} and every 1-ppb increase in NO₂ exposure on HCC-related mortality remained robust (aHRs [95% CIs] = 1.11 [1.08–1.14] and 1.08 [1.03–1.13], respectively). As illustrated in Figures 1–3, patients who were exposed to higher levels (defined as levels above the median level of exposure) of PM_{2.5} and NO₂ had a decreased cumulative survival rate compared with those exposed to lower levels (defined as levels below the median level of exposure) of PM_{2.5} and NO₂. Online supplementary Table 1 (for all online suppl. material, see www.karger.com/doi/10.1159/000525346) presents the effect of the interaction between ambient air pollutants and cigarette smoking on the risk of HCC-related mortality for two-pollutant models. As indicated in the table, we did not detect interaction effects between cigarette smoking and PM_{2.5} or NO₂ on the risk of HCC-related mortality.

Discussion

In our cohort comprising 1,000 patients with HCC randomly sampled from TLCN, we observed that increased residential exposure to PM_{2.5} and NO₂ after HCC diagnosis was significantly associated with a higher risk of HCC-related mortality. Every 1-µg/m³ increase in PM_{2.5} and every 1-ppb increase in NO₂ were associated with an 11% and 8% increase in the risk of HCC-related mortality, respectively. Furthermore, patients who lived in townships with higher levels of PM_{2.5} and NO₂ had

Table 4. The adjusted HR of death for one- and two-pollutant models

Variable	Units	HR (95% CI)	
		one pollutant	two pollutants
PM _{2.5}	per 1 µg/m ³	1.11 (1.09–1.14)	1.11 (1.08–1.14)
NO ₂	per 1 ppb	1.08 (1.30–1.13)	1.08 (1.03–1.13)
PM _{2.5}	High versus low exposure	1.61 (1.14–2.28)	
NO ₂	High versus low exposure	1.53 (1.13–2.09)	

Adjusted for age, gender, BMI, marital status, anti-HCV, the year of diagnosis, invasion, stage, AST, AFP, HBV-DNA load, Child-Pugh score, tumor size, temperature, and relative humidity. BMI, body mass index.

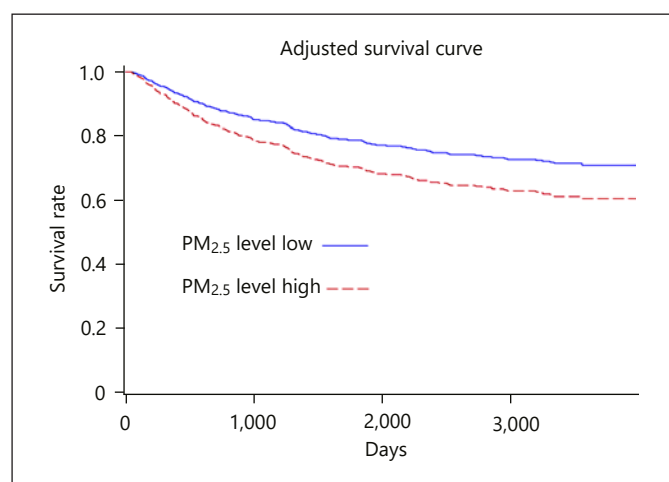


Fig. 1. Adjusted survival curve for exposure to different PM_{2.5} levels

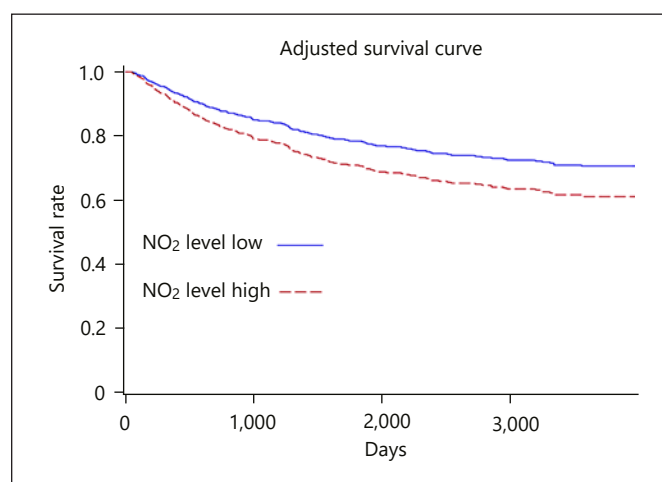


Fig. 2. Adjusted survival curve for exposure to different NO₂ levels.

shorter survival times compared with those who lived in townships with lower levels of these pollutants.

The associations observed in our study are comparable in magnitude to recent reports of the association between mortality and PM_{2.5} exposure [14, 15, 17]. In the USA, Deng et al. [14] studied the association between PM_{2.5} and mortality in patients newly diagnosed as having HCC, as selected from the California Cancer Registry for the period between 2000 and 2009. They reported that exposure to PM_{2.5} after HCC diagnosis was associated with increased all-cause and HCC-related mortality. The risk of mortality associated with a 1-standard deviation (5.0 mg/m³) increase in PM_{2.5} was 1.15 (95% CI: 1.12–1.18) [14]. In Taiwan, Guo et al. examined the long-term effect of exposure to PM_{2.5} on gastrointestinal cancer mortality by using a large cohort selected from a standard medical examination program that was initiated by the MJ Health Management Institution. They revealed that every 10-µg/m³ increase in PM_{2.5} was associated with a 13% increase

in the risk of liver cancer mortality [17]. The aforementioned studies however lacked crucial information on personal data related to the poor prognosis of HCC, such as smoking status, alcohol consumption, viral factors, liver function, HBV-DNA load, and tumor characteristics [23–25], which might lead to biased results. In another study in Taiwan, Lee et al. [15] determined the effect of PM_{2.5} on mortality among 1,003 patients with HCC who were treated at Chang Gung Memorial Hospital between 2000 and 2009. They observed that patients exposed to average concentrations of PM_{2.5} of ≥36 g/m³ yearly had a 58% higher mortality risk than did those exposed to concentrations of <36 g/m³ [15]. In that study, all participants were recruited from the same hospitals, which might lead to selection bias related to healthcare access [26]. Furthermore, their direct use of data on PM_{2.5} concentrations from the nearest air-monitoring stations as a surrogate for patients' actual exposure levels might have resulted in misclassifications of exposure.

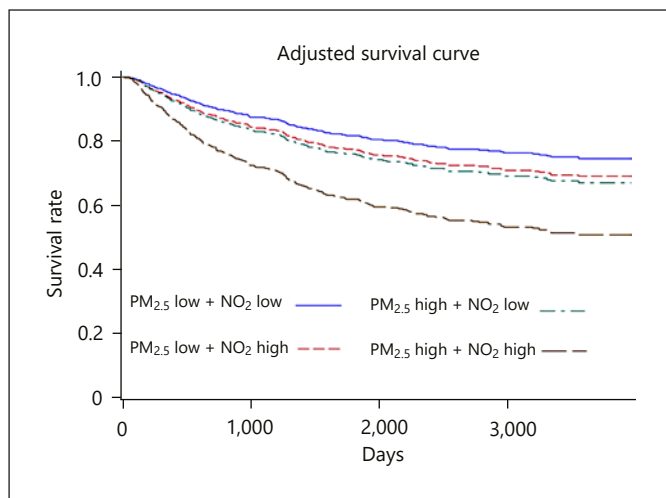


Fig. 3. Survival curve for patients with HCC exposed to different PM_{2.5} and NO₂ levels, adjusted for age, gender, BMI, marital status, anti-HCV, the year of diagnosis, invasion, stage, AST, AFP, HBV-DNA load, Child-Pugh score, tumor size, temperature, and relative humidity. BMI, body mass index.

We observed that patients exposed to higher levels of NO₂ had an increased risk of HCC-related mortality after HCC diagnosis. According to our review of the literature, this is the first longitudinal study to investigate the association between exposure to air pollutants other than PM_{2.5} and HCC-related mortality after HCC diagnosis. A few epidemiological studies have focused on determining the effect of air pollution on liver abnormalities [12, 27]. In the USA, Li et al. [27] recruited 2,513 participants from the third-generation cohort of the Framingham Offspring Study to assess the association between air pollution and liver fat. No effect of PM_{2.5} on liver fat was detected, but they revealed that participants who lived closer to major roadways had more liver fat. They indicated that compared with satellite model-based PM_{2.5} predictions, the predictions of models that consider distance to a major roadway are more closely related to the effects of near-road exposures to pollutants such as vehicle emissions (both particulate and gaseous pollutants) [27]. Orioli et al. [12] investigated the association between exposure to air pollutants and the incidence of cirrhosis in a large population-based cohort in Rome. They reported that every 10- $\mu\text{g}/\text{m}^3$ increase in NO₂ exposure to participants was associated with a 3% increase in the risk of cirrhosis [12]. The results suggest that long-term exposure to traffic-related air pollutants may be involved in liver abnormalities, which indirectly supports our findings

that exposure to air pollution after HCC diagnosis was associated with shortened survival times.

The biological mechanisms underlying the associations between air pollution and HCC mortality remain to be elucidated. Major urban air pollutants, PM_{2.5} and NO₂, are produced by vehicle exhaust emissions. Studies have proposed that some air pollutants could translocate from the lungs into the circulation and then into the liver, stimulating local inflammation [28]. Furthermore, exposure to air pollutants such as PM_{2.5} and NO₂ can induce inflammation and cause oxidative stress by generating reactive oxygen species and also by inhibiting protective enzymes [29–31], which could lead to cell death [32]. PM_{2.5} may be mixed with various toxicants such as chemicals and heavy metals [33–35] that might cause progression of cancer. A previous study demonstrated that exposure to PM_{2.5} inhibits DNA repair and causes DNA damage and its resulting mutations [36], which may increase the risk of cancer mortality. In animal studies, inhaled PM_{2.5} particles can activate Kupffer cells and accelerate tumor necrosis factors alpha upregulation, causing hepatic inflammation and oxidative stress [37, 38]. Furthermore, oxidative stress and inflammation have been reported as crucial factors in the development of carcinogenesis and malignancy in liver cells [39–42].

This study has several strengths. First, the study population was composed of participants enrolled from relatively large and well-characterized cohorts comprising the most eligible patients in the 5 major teaching hospitals in northern, central, and southern Taiwan. Second, the observation period was more than 10 years, which is long. Third, applying random sampling allowed the inclusion of accurate representative samples and eliminated sampling bias. Fourth, data were collected using common protocols for collecting patients' specimens, clinical and pathological information, and demographic information. Fifth, we studied the effects of 2 major traffic-related pollutants, PM_{2.5} and NO₂, which have not been included in previous epidemiological studies. Finally, we constructed models that adjusted for a robust set of potential confounders, including demographic characteristics, liver function, and tumor staging and characteristics.

Our study also has several limitations. First, we only had information about participants' residential townships; therefore, we used the townships' ambient PM_{2.5} and NO₂ levels as the exposure variable, which may have resulted in misclassifications of exposure. However, the method we used to define participants' exposure has been widely applied in epidemiological studies [43, 44]. Second, we lacked information about participants' total exposure, including commuting exposure, occupational

exposure, indoor exposure, and personal use of protective masks, all of which might have affected the observed results. Third, information about residential township was available only for the date of diagnosis and whether patients relocated during the study period was not known. However, patients with HCC are less likely to change residential locations after diagnosis due to their survival times being relatively short. Fourth, we did not have the information on travel distance between the residential township and the medical center for each patient. Therefore, a long distance between patients' residential township and the medical center may lead to some bias. However, the Taiwanese healthcare system is characterized by good accessibility, the average travel distance of patients to access healthcare being 9 km [45]. In the meantime, a more rural and distant township from medical centers might have been less polluted. Therefore, if the accessibility related to travel distance of patients affected our observation, it might have reduced the observable effects.

Conclusion

In summary, this study revealed that PM_{2.5} and NO₂ exposure were positively associated with an increased risk of HCC-related mortality after HCC diagnosis. This finding may be especially important for parts of the world with relatively high levels of air pollutants and high prevalence rates of HCC, such as Asia and Africa. Future work should measure the components of air pollutants and employ specific biological health monitoring to facilitate the understanding of the mechanisms underlying the effects of pollution toxicants on HCC progression.

Acknowledgments

The authors thank National Taiwan University for providing administrative and technical support and appreciate the National Health Research Institute Biobank and its cooperative institutions for providing data (all are de-identified) for our research. The National Health Research Institute Biobank is supported by grants from the Ministry of Health and Welfare, the Ministry of Science and Technology, and the National Health Research Institutes, Taiwan.

Statement of Ethics

This study was reviewed and approved by the Institutional Review Board of the National Health Research Institutes (Number: EC1070302-E) and has been confirmed for waiver of informed consent. Signed written informed consents were obtained from

participants during initial enrollment in TLCN. The use of data in this investigation did not include personal identification. This study was conducted in accordance with the ethical guidelines of the Declaration of Helsinki.

Conflict of Interest Statement

Prof. Chen is an Associate Editor of *Liver Cancer*. The authors declare that they have no known competing financial interests or personal relationships that could have appeared to influence the work reported in this paper.

Funding Sources

This study was supported by grant NHRI-110-EMGP09 from the National Health Research Institutes, Taiwan.

Author Contributions

Dr. Wei-Shan Chin conceptualized and designed the study, interpreted the results, and drafted the manuscript. Dr. Shih-Chun Pan carried out the analysis and drafting the manuscript. Dr. Ching-Chun Huang contributed to data acquisition, preparation, and analysis. Dr. Pei-Jer Chen designed the statistical analysis and reviewed the manuscript. Dr. Yue Leon Guo conceptualized and designed the study, coordinated and supervised data collection, and critically reviewed the manuscript for critical intellectual content. All the authors approved the final manuscript as submitted and agree to be accountable for all aspects of the work.

Data Availability Statement

The data used in this study were from the Taiwan Liver Cancer Network (TLCN) and saved in the National Health Research Institutes Biobank of Taiwan. If researchers are interested in liver cancer research, they can obtain the data through a formal application to the TLCN (<http://tlcn.nhri.edu.tw/TLCN/index.jsp>).

References

- 1 Stanaway JD, Afshin A, Gakidou E, Lim SS, Abate D, Abate KH, et al. Global, regional, and national comparative risk assessment of 84 behavioural, environmental and occupational, and metabolic risks or clusters of risks for 195 countries and territories, 1990–2017: a systematic analysis for the Global Burden of Disease Study 2017. *Lancet*. 2018;392(10159):1923–94.
- 2 The International Agency for Research on Cancer (IARC). *IARC monographs on the evaluation of carcinogenic risks to humans*. Lyon, France; 2015.

- 3 Turner MC, Andersen ZJ, Baccarelli A, Diver WR, Gapstur SM, Pope CA III, et al. Outdoor air pollution and cancer: an overview of the current evidence and public health recommendations. *CA A Cancer J Clin.* 2020;70(6):460–79.
- 4 Sung H, Ferlay J, Siegel RL, Laversanne M, Soerjomataram I, Jemal A, et al. Global Cancer Statistics 2020: GLOBOCAN estimates of incidence and mortality worldwide for 36 cancers in 185 countries. *CA A Cancer J Clin.* 2021;71(3):209–49.
- 5 The World Health Organization (WHO). Estimated number of deaths from 2020 to 2040 by cancer type. 2021.
- 6 Villanueva A. Hepatocellular carcinoma. *N Engl J Med.* 2019;380(15):1450–62.
- 7 Global Burden of Disease Liver Cancer Collaboration; Akinyemiju T, Abera S, Ahmed M, Alam N, Alemayohu MA, et al. The burden of primary liver cancer and underlying etiologies from 1990 to 2015 at the global, regional, and national level: results from the Global Burden of Disease Study 2015. *JAMA Oncol.* 2017;3(12):1683–91.
- 8 Lin L, Yan L, Liu Y, Qu C, Ni J, Li H. The burden and trends of primary liver cancer caused by specific etiologies from 1990 to 2017 at the global, regional, national, age, and sex level results from the Global Burden of Disease Study 2017. *Liver Cancer.* 2020;9(5):563–82.
- 9 Blonski W, Kotlyar DS, Forde KA. Non-viral causes of hepatocellular carcinoma. *World J Gastroenterol.* 2010;16(29):3603–15.
- 10 Kim KN, Lee H, Kim JH, Jung K, Lim YH, Hong YC. Physical activity- and alcohol-dependent association between air pollution exposure and elevated liver enzyme levels: an Elderly Panel Study. *J Prev Med Public Health.* 2015 May;48(3):151–69.
- 11 Kim HJ, Min JY, Seo YS, Min KB. Association of ambient air pollution with increased liver enzymes in Korean adults. *Int J Environ Res Public Health.* 2019 Apr 4;16(7):1213.
- 12 Orioli R, Solimini AG, Michelozzi P, Forastiere F, Davoli M, Cesaroni G. A cohort study on long-term exposure to air pollution and incidence of liver cirrhosis. *Environ Epidemiol.* 2020;4(4):e109.
- 13 Pan W-C, Wu C-D, Chen M-J, Huang Y-T, Chen C-J, Su H-J, et al. Fine particle pollution, alanine transaminase, and liver cancer: a Taiwanese Prospective Cohort Study (REVEAL-HBV). *J Natl Cancer Inst.* 2016;108(3).
- 14 Deng H, Eckel SP, Liu L, Lurmann FW, Cockburn MG, Gilliland FD. Particulate matter air pollution and liver cancer survival. *Int J Cancer.* 2017;141(4):744–9.
- 15 Lee C-H, Hsieh S-Y, Huang W-H, Wang IK, Yen T-H. Association between ambient particulate matter 2.5 exposure and mortality in patients with hepatocellular carcinoma. *Int J Environ Res Public Health.* 2019;16(14):2490.
- 16 Coleman NC, Burnett RT, Higbee JD, Lefler JS, Merrill RM, Ezzati M, et al. Cancer mortality risk, fine particulate air pollution, and smoking in a large, representative cohort of US adults. *Cancer Causes Control.* 2020 Aug 1;31(8):767–76.
- 17 Guo C, Chan TC, Teng YC, Lin C, Bo Y, Chang LY, et al. Long-term exposure to ambient fine particles and gastrointestinal cancer mortality in Taiwan: a cohort study. *Environ Int.* 2020 May;138:105640.
- 18 Huang S-F, Chen C-L, Yeh C-T, Yen T-C, Chen P-J, Liaw Y-F. Introduction of Taiwan Liver Cancer Network. *Hepatol Int.* 2012;6:234.
- 19 Chang IC, Huang SF, Chen PJ, Chen CL, Chen CL, Wu CC, et al. The hepatitis viral status in patients with hepatocellular carcinoma: a study of 3843 patients from Taiwan Liver Cancer Network. *Medicine.* 2016 Apr;95(15):e3284.
- 20 Environmental Protection Administration, Taiwan. 2004–2018 air quality monitoring system. Taipei, Taiwan. 2019.
- 21 Huang CC, Wen HJ, Chen PC, Chiang TL, Lin SJ, Guo YL. Prenatal air pollutant exposure and occurrence of atopic dermatitis. *Br J Dermatol.* 2015;173(4):981–8.
- 22 Kwon I, Jun DW, Moon JH. Effects of moderate alcohol drinking in patients with nonalcoholic fatty liver disease. *Gut Liver.* 2019 May 15;13(3):308–14.
- 23 Yu SJ, Kim YJ. Hepatitis B viral load affects prognosis of hepatocellular carcinoma. *World J Gastroenterol.* 2014;20(34):12039–44.
- 24 Xu X-F, Xing H, Han J, Li Z-L, Lau W-Y, Zhou Y-H, et al. Risk factors, patterns, and outcomes of late recurrence after liver resection for hepatocellular carcinoma: a multicenter study from China. *JAMA Surg.* 2019;154(3):209–17.
- 25 McGlynn KA, Petrick JL, El-Serag HB. Epidemiology of hepatocellular carcinoma. *Hepatology.* 2021;73(S1):4–13.
- 26 Delgado-Rodríguez M, Llorca J. Bias. *J Epidemiol Community Health.* 2004;58(8):635–41.
- 27 Li W, Dorans KS, Wilker EH, Rice MB, Long MT, Schwartz J, et al. Residential proximity to major roadways, fine particulate matter, and hepatic steatosis: the Framingham Heart Study. *Am J Epidemiol.* 2017;186(7):857–65.
- 28 Kim JW, Park S, Lim CW, Lee K, Kim B. The role of air pollutants in initiating liver disease. *Toxicol Res.* 2014 Jun;30(2):65–70.
- 29 Last JA, Sun WM, Witschi H. Ozone, NO, and NO₂: oxidant air pollutants and more. *Environ Health Perspect.* 1994;102 Suppl 10(Suppl 10):179–84.
- 30 Lodovici M, Bigagli E. Oxidative stress and air pollution exposure. *J Toxicol.* 2011;2011:487074–4.
- 31 Petit PC, Fine DH, Vásquez GB, Gamero L, Slaughter MS, Dasse KA. The pathophysiology of nitrogen dioxide during inhaled nitric oxide therapy. *ASAIO J.* 2017;63(1):7–13.
- 32 Peixoto MS, de Oliveira Galvão MF, Batistuzzo de Medeiros SR. Cell death pathways of particulate matter toxicity. *Chemosphere.* 2017;188:32–48.
- 33 Harrison RM, Jones AM, Lawrence RG. Major component composition of PM₁₀ and PM_{2.5} from roadside and urban background sites. *Atmos Environ.* 2004;38(27):4531–8.
- 34 Risom L, Møller P, Loft S. Oxidative stress-induced DNA damage by particulate air pollution. *Mutat Res.* 2005 Dec 30;592(1–2):119–37.
- 35 Park M, Joo HS, Lee K, Jang M, Kim SD, Kim I, et al. Differential toxicities of fine particulate matters from various sources. *Sci Rep.* 2018;8(1):17007.
- 36 Mehta M, Chen L-C, Gordon T, Rom W, Tang M-S. Particulate matter inhibits DNA repair and enhances mutagenesis. *Mutat Res.* 2008;657(2):116–21.
- 37 Tan HH, Fiel MI, Sun Q, Guo J, Gordon RE, Chen LC, et al. Kupffer cell activation by ambient air particulate matter exposure may exacerbate non-alcoholic fatty liver disease. *J Immunotoxicol.* 2009 Dec;6(4):266–75.
- 38 Xu M-X, Ge C-X, Qin Y-T, Gu T-T, Lou D-S, Li Q, et al. Prolonged PM_{2.5} exposure elevates risk of oxidative stress-driven nonalcoholic fatty liver disease by triggering increase of dyslipidemia. *Free Radic Biol Med.* 2019;130:542–56.
- 39 Wang Z, Li Z, Ye Y, Xie L, Li W. Oxidative stress and liver cancer: etiology and therapeutic targets. *Oxid Med Cell Longev.* 2016;2016:7891574.
- 40 Fu Y, Chung F-L. Oxidative stress and hepatocarcinogenesis. *Hepatoma DJ.* 2018;4:39.
- 41 McLoughlin MR, Orlicky DJ, Prigge JR, Krishna P, Talago EA, Cavigli IR, et al. TrxR1, Gsr, and oxidative stress determine hepatocellular carcinoma malignancy. *Proc Natl Acad Sci U S A.* 2019;116(23):11408–17.
- 42 Lemasters JJ, Jaeschke H. Oxidative stress and inflammation in the liver. *The liver.* 2020. p. 714–27.
- 43 Lin S-Y, Ju S-W, Lin CL, Hsu W-H, Lin C-C, Ting IW, et al. Air pollutants and subsequent risk of chronic kidney disease and end-stage renal disease: a population-based cohort study. *Environ Pollut.* 2020;261:114154.
- 44 Pan S-C, Huang C-C, Chin W-S, Chen B-Y, Chan C-C, Guo YL. Association between air pollution exposure and diabetic retinopathy among diabetics. *Environ Res.* 2020;181:108960.
- 45 Chen LC, Sheu JT, Chuang YJ, Tsao Y. Predicting the travel distance of patients to access healthcare using Deep Neural Networks. *IEEE J Transl Eng Health Med.* 2022;10:1–11.