

Review Articles

Regulatory T-Cells in Chronic Lymphocytic Leukemia and Autoimmune Diseases

Giovanni D'Arena¹, Giovanni Rossi², Barbara Vannata³, Silvia Deaglio⁴, Giovanna Mansueto¹, Fiorella D'Auria⁵, Teodora Statuto⁵, Vittorio Simeon⁶, Laura De Martino⁷, Aurelio Marandino⁷, Giovanni Del Poeta⁸, Vincenzo De Feo⁷ and Pellegrino Musto^{1,5,6}

¹Department of Onco-Hematology, IRCCS "Centro di Riferimento Oncologico della Basilicata", Rionero in Vulture, Italy

²Hematology and Stem Cell Transplantation Unit, IRCCS "Casa Sollievo della Sofferenza", San Giovanni Rotondo, Italy

³Hematology Institute, Catholic University of "Sacred Hearth", Rome, Italy

⁴Human Genetics Foundation (HuGeF) and Laboratory of Immunogenetics, University of Turin, Italy

⁵Laboratory of Preclinical and Translational Research, IRCCS "Centro di Riferimento Oncologico della Basilicata", Rionero in Vulture, Italy

⁶Department of Pharmaceutical and Biomedical Sciences, University of Salerno, Italy

⁷Hematology Institute, "Tor Vergata" University, Rome, Italy

Correspondence to: Dr. Giovanni D'Arena, MD. Department of Onco-Hematology, IRCCS "Centro di Riferimento Oncologico della Basilicata", Via Padre Pio n. 1, 85028 Rionero in Vulture (Pz), Italy. Tel: +39.0972.726521
FAX: +39.0972.726217. E-mail: giovannidarena@libero.it

Competing interests: The authors have declared that no competing interests exist.

Published: August 9, 2012

Received: June 2, 2012

Accepted: July 19, 2012

Citation: Mediterr J Hematol Infect Dis 2012, 4(1): e2012053, DOI: 10.4084/MJHID.2012.053

This article is available from: <http://www.mjhid.org/article/view/10576>

This is an Open Access article distributed under the terms of the Creative Commons Attribution License (<http://creativecommons.org/licenses/by/2.0>), which permits unrestricted use, distribution, and reproduction in any medium, provided the original work is properly cited.

Abstract. Regulatory T-cells (Tregs) constitute a small subset of cells that are actively involved in maintaining self-tolerance, in immune homeostasis and in antitumor immunity. They are thought to play a significant role in the progression of cancer and are generally increased in patient with chronic lymphocytic leukemia (CLL). Their number correlates with more aggressive disease status and is predictive of the time to treatment, as well. Moreover, it is now clear that dysregulation in Tregs cell frequency and/or function may result in a plethora of autoimmune diseases, including multiple sclerosis, type 1 diabetes mellitus, myasthenia gravis, systemic lupus erythematosus, autoimmune lymphoproliferative disorders, rheumatoid arthritis, and psoriasis. Efforts are made aiming to develop approaches to deplete Tregs or inhibit their function in cancer and autoimmune disorders, as well.

A Brief History. The human immune system is a well-coordinated network of cells, organs and glands acting in harmony to protect the host from a broad range of pathogenic microorganisms and, at the same time, to

avoid responsiveness to self-antigens (*immunological self-tolerance*) and to control the quality and the magnitude of immune responses to non-self-antigens thus avoiding damage to the host (*immune*

homeostasis). Several mechanisms are thought to be involved in this complex control system (**Table 1**). In this scenario, a distinct small subset of specialized T-lymphocytes, the so-called regulatory T-cells (Tregs), seem to play a pivotal role in maintaining homeostasis and self-tolerance.^{1,2} In fact, Tregs act suppressing the function of self-reactive T-cells to protect the host from autoimmune disease. At the same time they seem to be able to prevent antitumor immune responses.³

Table 1. The main mechanisms of immunological tolerance

Central tolerance	Clonal deletion
	Clonal anergy
	Receptor editing
Peripheral tolerance	Immune deviation
	Suppression
	Immune privilege
	Network-mediated regulation
	Coreceptor modulation

Gershon and Kondo of Yale University firstly proposed the existence of T-cells with suppressive activity more than 40 years ago.⁴ However, its better identification lacked for several years and this field of research shrank until to 1995, when Shimon Sakaguchi and coworkers identified a population of CD4⁺ T-cells expressing surface interleukin-2 (IL)-2 receptor α -chain (recognized by CD25) and termed them 'regulatory' T-cells.⁵ However, CD25 is not exclusively restricted to Tregs because of its expression on the surface of T effector lymphocytes after activation.⁶ Baecher-Allan and co-workers, by means of flow cytometry and *in vitro* study of sorted cells, identified a very small subset of T cells with high expression of CD25 that exhibited a strong regulatory function in humans.⁷⁻⁹ CD4⁺CD25^{high} cells inhibited proliferation and cytokine secretion by activated CD4⁺CD25⁺ responder T-cells in a contact-dependent manner.

In addition, it has been experimentally demonstrated that depleting Tregs produces inflammatory bowel disease, resulting from excessive immune response to intestinal commensal bacteria.¹⁰ Finally, reducing or removing Tregs leads to effective tumor immunity leading in turn to tumor eradication.^{11,12}

More recently, the intracellular transcription factor forkhead/winged helix box P3 (FoxP3), also called scurfin, has been identified as the most accepted marker for Tregs.¹³⁻¹⁵ It functions regulating a set of genes involved in the suppression, proliferation and

metabolic activities of Tregs. Moreover, CD127, that identified the heterodimeric IL-7 receptor, combined with CD4, CD25 and FoxP3, has been shown to better identify Tregs avoiding the contamination of this small cell population (accounting for 1-4% of circulating CD4⁺ lymphocytes in humans) with activated T-cells.^{16,17}

Tregs and Autoimmunity. It is now clear that dysregulation in Tregs cells may result in a plethora of autoimmune diseases, including multiple sclerosis, type 1 diabetes mellitus, myasthenia gravis, systemic lupus erythematosus, autoimmune lymphoproliferative disorders, rheumatoid arthritis, and psoriasis.¹⁸

As a matter of the fact, complex genetic disorders typically associated with the MHC chromosomal region as well as the dysregulation of Treg cells frequency and/or function appear to be involved in autoimmune diseases.¹⁹ In particular, FoxP3, IL-2 and relative receptor play a key role in the maintenance of Tregs associated pathological immune responses.²⁰

Deficiency in FoxP3 due to genetic mutations results in a lethal X-linked recessive lymphoproliferative disease in mice and human subjects characterized by immunodysregulation, polyendocrinopathy, enteropathy, X-linked (IPEX) syndrome.²¹ This autoimmune disorder is characterized by a severe intestinal pathology, with massive T-cell infiltration, type 1 diabetes mellitus, eczema, anemia, liver infiltration, thrombocytopenia, hypothyroidism, and the presence of various autoantibodies. FoxP3 deficiency was also found in the multiple sclerosis although Treg cells frequency was comparable with healthy individuals.^{22,23} Similar results emerged in type 1 autoimmune diabetes, psoriasis, myasthenia gravis and autoimmune polyglandular syndromes (APS).²⁴⁻²⁶ The degree of deficiency of functional anomaly of FoxP3⁺ natural Tregs is able to alter the manifestation of autoimmunity. Alterations of Tregs were also reported in rheumatoid arthritis and in idiopathic juvenile arthritis. Results obtained may suggest a possible role of Tregs in the downregulation of the joint inflammation.²⁷

Defining Tregs. Taken all above into account, Tregs may be defined as a small population of T-cells with a relevant role in the immune homeostasis. For this reason, they are actively involved in the immunosurveillance against autoimmune disorders and cancer, as well. Tregs may be defined as CD4⁺ T-cells expressing CD25 at high levels, cytoplasmic FoxP3, and very low to undetectable CD127 on their surface (**Figure 1**). However, several other markers have been associated to Tregs, but none of them may be considered as a unique marker (**Table 2**).

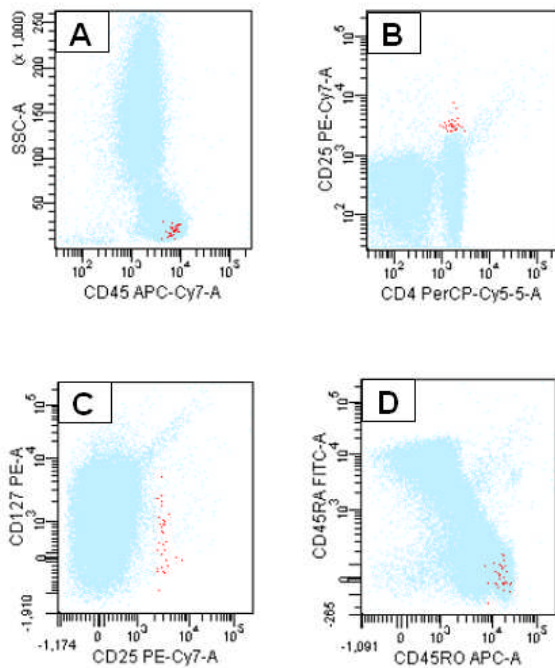


Figure 1. Flow cytometric detection of Tregs. Tregs are CD4+ lymphocytes displaying a CD45 expression of T-cell subpopulations (A). CD25 antigen is expressed at high density whereas CD127 at low to undetectable levels (B and C). Selected CD25+/CD127+ lymphocytes are positive for CD45RO (D).

Two main subsets of Tregs have been described according to their origin. *Innate (or naturally occurring)* Tregs originate in the thymus as a consequence of the interaction with high-affinity antigens expressed in thymic stroma and constitutively expressing FoxP3.²⁸ They are involved in immune homeostasis, thus suppressing the response against self antigens. Such cells persist throughout life despite thymic involution after puberty. *Adaptive* Tregs emerges also from the thymus but acquire its suppressive activity in periphery regulating the response against self and non-self-antigens.²⁹ **Figure 2** summarizes the generation and subpopulations of Tregs.

Tregs have been shown to suppress the proliferation of antigen-stimulated naïve T-cells and several mechanisms have been suggested by means of

Table 2. Immunophenotype of Tregs

Antigen	Expression
CD4	Positive
CD8	Negative
CD25	High
CD127	Low to undetectable
FoxP3	Positive
GITR	High
IL-10	Positive
TGF-β	Positive
CD152 (CTLA-4)	High
CD154 (CD40L)	Negative
CD45RA	Negative
CD45RO	Positive

which they elicit their suppressive activity.^{30,31} Either natural and adaptive Tregs are antigen-specific and are seen to need T-cell receptor (TCR) triggering to become suppressive^{31,32} despite this latter point is still controversial.³³ *In vitro* studies suggested that activated Tregs suppress activated CD4⁺ or CD8⁺ effector T-cells by means of cell-to-cell contact. In this mechanism a crucial role is played by the ligation of CD80/CD86 complex on effector cells by cytotoxic T-lymphocytes antigen-4 (CTLA-4) on Tregs surface resulting in the transmission of inhibitory signals of T-cell function.^{34,35} In a similar fashion, Tregs seem to modulate dendritic cells (DCs) function resulting in the expression and activation of indoleamine 2,3-dioxygenase degradation.³⁶ DCs may be blocked in maturation and/or activation by release of IL-10 and TGF-β that resulting in antigen-presenting capacity impairment due to down-regulation of major histocompatibility complex (MHC) class II and in interfering in costimulatory molecules expression.^{37,38} Other *in vitro* studies suggest Tregs inhibition by means of the release of suppressive cytokines, such as IL-10 and TGF-β.³⁹⁻⁴¹ Activated Tregs are capable to express granzyme A or perforin and kill activated CD4⁺ or CD8⁺ T-cells, through the perforin-dependent way.^{42,43}

Tregs and Chronic Lymphocytic Leukemia. Chronic lymphocytic leukemia (CLL), the most common form of leukemia in Western countries, is characterized by the accumulation of monoclonal B-lymphocytes in bone marrow, lymphoid organs and peripheral blood.⁴⁴ Moreover, there is increasing evidence of T cell dysfunction in CLL and this may probably contribute to the etiology and the progression of the disease.^{45,46} Several authors reported that Tregs are increased in CLL patients.⁴⁷⁻⁵¹ Using multicolor flow cytometry, we showed that CLL patients had a higher absolute number of circulating Tregs compared to age and sex-matched controls.⁵¹ In addition, Tregs cell number was significantly correlated to more advanced Rai clinical stages, peripheral blood B-lymphocytosis, more elevated LDH levels, and absolute number of CD38⁺ neoplastic B-cells.

The evidence that Tregs are reduced after therapy with fludarabine, agrees with the hypothesis that these cells play a critical role in protecting CLL cells from getting killed by the immune system.⁴⁷ The same happens when patients with CLL were treated with thalidomide.⁵² This drug and its analogues, such as lenalidomide, acts as immunomodulatory agents targeting the microenvironment and both are shown to be effective in the treatment of CLL patients, probably by means of TNF modulation.⁵³⁻⁵⁵

The prognostic role of Tregs have been poorly

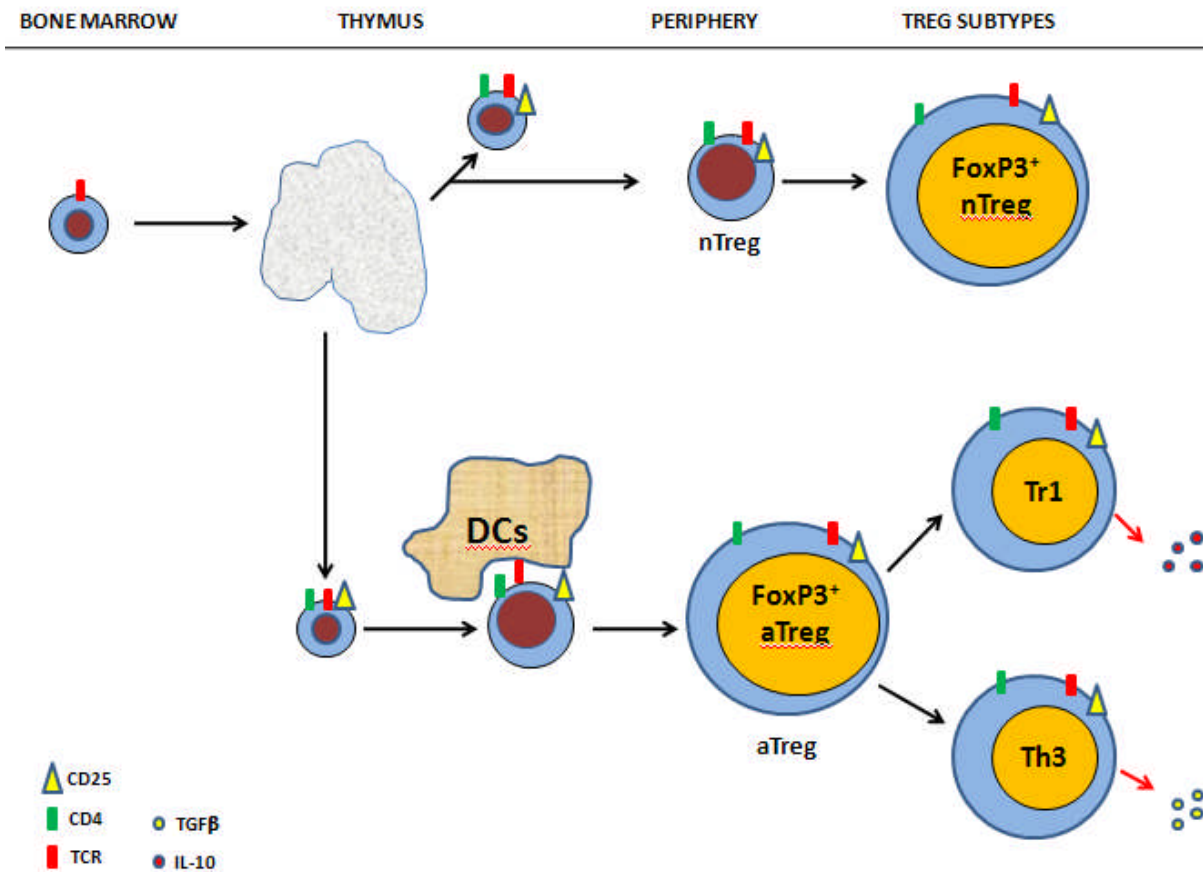


Figure 2. Regulatory T-cells: development and subsets. Three major subsets of Tregs have been recognized so far. A) Tregs (innate and adaptative): they express CD25, FoxP3, CTLA-4, $\alpha\beta$ -TCR, and secrete the immunosuppressive lymphokines IL-10 and TGF- β . B) Tr1 cells: they do not express FoxP3 nor large amount of CD25, secrete IL-10 and TGF- β . Tr1 cells are abundant in the intestine where they elicit their main function that is making tolerance to the many agents that are part of its diet. C) Th₃ cells: they are also prevalent in the intestine and like to Tr1 cells act suppressing immune responses to ingested antigens (oral tolerance) by means of TGF- β secretion.

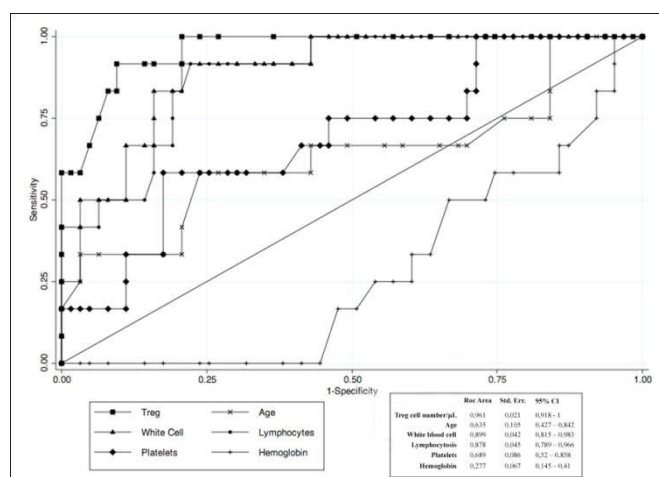


Figure 3. ROC curve graphically showing the trade-offs between sensitivity and specificity for different cutoffs used to discriminate between positive and negative cases (i.e., treatment demand vs no treatment demand patients). The best predictive cutoff of circulating Treg cell number seems to be in the range from ≥ 40 to $\geq 42/\mu$ L. The result of cutoff $\geq 41/\mu$ L shows the best predictive power among the others.

investigated. Only two paper reported that a shorter time to first treatment may be predicted by the

circulating number of Tregs.^{56,57} As showed in **Figure 3**, we found a best predictive cut-off of absolute circulating Tregs able to identify patients with early stage CLL at higher risk of requiring therapy.⁵⁷

Finally, we have studied Tregs in ‘clinical’ monoclonal B-cell lymphocytosis (MBL), a condition in which less than 5000/ μ L circulating monoclonal B-cells, in absence of other features of lymphoproliferative disorders, is found.⁵⁸ We showed that MBL patients had a lower absolute number of Tregs, compared to CLL patients, but higher than controls (**Figure 4**).⁵⁹ Taken together, these data show that the tumor mass (from MBL low to intermediate to high-risk CLL) and the circulating Tregs increase simultaneously, thus suggesting that the expected result is a more robust inhibition of tumor inhibiting cells and, ultimately, a greater expansion of neoplastic B cells.

Conclusions. Tregs play a critical role in immune tolerance (maintaining peripheral tolerance to self-antigens) and in immune homeostasis (regulating the

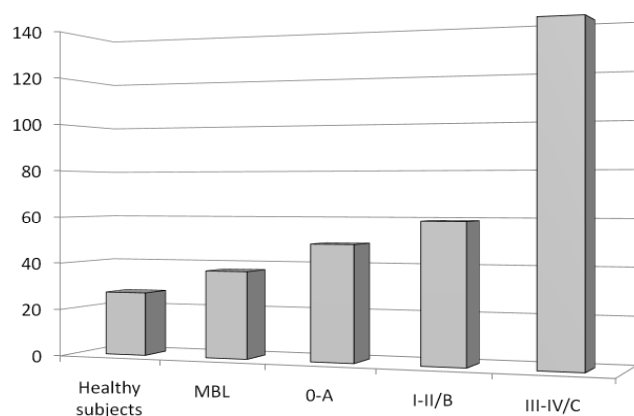


Figure 4. Circulating Tregs number in healthy subjects, MBL and CLL patients grouped according to Rai/Binet clinical stages. Data are expressed as mean absolute circulating Tregs number (/μL) ± standard deviations.

References:

- Jiang H, Chess L. Regulation of immune responses by T cells. *N Engl J Med* 2006; 354: 1166-1176. <http://dx.doi.org/10.1056/NEJMra055446> PMID:16540617
- Sakaguchi S, Yamaguchi T, Nomura T, Ono M. Regulatory T cells and immune tolerance. *Cell* 2008; 133: 775-787. <http://dx.doi.org/10.1016/j.cell.2008.05.009> PMID:18510923
- Beyer M, Schultze JL. Regulatory T cells in cancer. *Blood* 2006; 108: 804-811. <http://dx.doi.org/10.1182/blood-2006-02-002774> PMID:16861339
- Gershon R, Kondo K. Cell interactions in the induction of tolerance: the role of thymic lymphocytes. *Immunology* 1970; 18: 723-737. PMID:4911896 PMCid:1455602
- Sakaguchi S, Sakaguchi N, Asano M, Itoh M, Toda M. Immunologic tolerance maintained by activated T cells expressing IL-2 receptor α -chain (CD25): breakdown of a single mechanism of self-tolerance causes various autoimmune diseases. *J Immunol* 1995; 155: 1151-1164. PMID:7636184
- Robb RJ, Munck A, Smith KA. T cell growth factor receptors. Quantitation, specificity, and biological relevance. *J Exp Med* 1981; 154: 1455-1474. <http://dx.doi.org/10.1084/jem.154.5.1455> PMID:6975347 PMCid:2186509
- Baecher-Allan C, Brown JA, Freeman GJ, Hafler DA. CD4+CD25high regulatory cells in human peripheral blood. *J Immunol* 2001; 167: 1245-1253. PMID:11466340
- Baecher-Allan C, Viglietta V, Hafler DA. Human CD4+CD25+ regulatory T cells. *Semin Immunol* 2004; 16: 89-97. <http://dx.doi.org/10.1016/j.smim.2003.12.005> PMID:15036232
- Baecher-Allan C, Hafler DA. Human regulatory T cells and their role in autoimmune disease. *Immunol Rev* 2006; 212: 203-216. <http://dx.doi.org/10.1111/j.0105-2896.2006.00417.x> PMID:16903916
- Singh B, Read S, Asseman C, Malstrom V, Mottet C, Stephens LA, Stepankova R, Tlaskalova H, Powrie F. Control of intestinal inflammation by regulatory T cells. *Immunol Rev* 2001; 182: 190-200. <http://dx.doi.org/10.1034/j.1600-065X.2001.1820115.x> PMID:11722634
- Wang HY, Wang RF. Regulatory T cells and cancer. *Curr Opin Immunol* 2007; 19: 217-223. <http://dx.doi.org/10.1016/j.coi.2007.02.004> PMID:17306521
- Belkaid Y, Rouse BT. Natural regulatory T cells in infectious disease. *Nat Immunol* 2005; 6: 353-360. <http://dx.doi.org/10.1038/ni1181> PMID:15785761
- Hori S, Nomura T, Sakaguchi S. Control of regulatory T cell development by the transcription factor FoxP3. *Science* 2003; 299: 1057-1061. <http://dx.doi.org/10.1126/science.1079490> PMID:12522256
- Fontenot JD, Gavin MA, Rudensky AY. FOXP3 programs the development and function of CD4+CD25+ regulatory T-cells. *Nat Immunol* 2003; 4: 330-336. <http://dx.doi.org/10.1038/ni904> PMID:12612578
- Rudensky AY, Fontenot JD. A well adapted regulatory contrivance: regulatory T cell development and the forkhead family transcription factor FoxP3. *Nature Immunol* 2005; 6: 331-337. <http://dx.doi.org/10.1038/ni1179> PMID:15785758
- Seddiki N, Santner-Nanan B, Martinson J, Zaunders J, Sasson S, Landay A, Solomon M, Selby W, Alexander SI, Nanan R, Kelleher A, Fazekas de St Groth B. Expression of interleukin (IL)-2 and IL-7 receptors discriminate between human regulatory and activated T cells. *J Exp Med* 2006; 203: 1693-1700. <http://dx.doi.org/10.1084/jem.20060468> PMID:16818676 PMCid:2118333
- Liu W, Putnam AL, Xu-Yu Z, Szot GL, Lee MR, Zhu S, Gottlieb PA, Kapranov P, Gingeras TR, Fazekas de St Groth B, Clayberger C, Soper DM, Ziegler SF, Bluestone JA. CD127 expression inversely correlates with FoxP3 and suppressive function of human CD4+ Treg cells. *J Exp Med* 2006; 203: 1700-1711. <http://dx.doi.org/10.1084/jem.20060772> PMID:16818678 PMCid:2118339
- Dejaco C, Duftner C, Grubeck-Loebenstien B, Schirmer M. Imbalance of regulatory cells in human autoimmune diseases. *Immunology* 2005; 117: 289-300. <http://dx.doi.org/10.1111/j.1365-2567.2005.02317.x> PMID:16476048 PMCid:1782226
- Hafler DA, de Jager PL. Applying a new generation of genetic maps to understand human inflammatory disease. *Nat Rev Immunol* 2005; 5: 83-91. <http://dx.doi.org/10.1038/nri1532> PMID:15630431
- Sakaguchi S, Ono M, Setoguchi R, Yagi H, Hori S, Fehervari Z, Shimizu J, Takahashi T, Nomura T. Foxp3+ CD25+ CD4+ natural regulatory T cells in dominant self-tolerance and autoimmune disease. *Immunol Rev* 2006; 212: 8-27. <http://dx.doi.org/10.1111/j.0105-2896.2006.00427.x> PMID:16903903
- Godfrey VL, Wilkinson JE, Russell LB. X-linked lymphoreticular disease in the scurfy (sf) mutant mouse. *Am J Pathol* 1991; 138: 1379-1387. PMID:2053595 PMCid:1886400
- Viglietta V, Baecher-Allan C, Weiner HL, Hafler DA. Loss of functional suppression by CD4+CD25+ regulatory T cells in patients with multiple sclerosis. *J Exp Med* 2004; 199: 971-979. <http://dx.doi.org/10.1084/jem.20031579> PMID:15067033 PMCid:2211881
- Huan J, Culbertson N, Spencer L, Bartholomew R, Burrows GG, Chou YK, Bourdette D, Ziegler SF, Offner H, Vandenbark AA. Decreased FOXP3 in multiple sclerosis patients. *J Neurosci Res* 2005; 81: 45-52. <http://dx.doi.org/10.1002/jnr.20522> PMID:15952173

immune response to non self-antigens). Moreover, it is now clear that Tregs have a role in suppressing tumor-specific immunity and for that reason are actively involved in the etiology and in progression of cancer, such as CLL, the most frequent form of leukemia in Western countries. Tregs dysregulation is thought to be also involved in the pathogenesis of autoimmune disorders. In light of this, Tregs appear as having a great potential in treating autoimmunity and cancer. There is now considerable evidence in preclinical models to suggest that adoptive Tregs therapy will be highly efficacious. For that reason, clinical strategies are developing to target such cells aiming to modulate their suppressive function.⁶⁰⁻⁶⁵

24. Kriegl MA, Lohmann T, Gabler C, Blank N, Kalden JR, Lorenz HM. Defective suppressor function of human CD4+CD25+ regulatory T cells in autoimmune polygranular T cells in autoimmune polygranular syndrome type II. *J Exp Med* 2004; 199: 1285-1891. <http://dx.doi.org/10.1084/jem.20032158> PMID:15117972 PMCID:2211900
25. Balandina A, Lecart S, Dartevelle P, Saoudi A, Berrich-Aknin S. Functional defect of regulator CD4(+)CD25+ T cells in the thymus of patients with autoimmune myasthenia gravis. *Blood* 2005; 105: 735-41. <http://dx.doi.org/10.1182/blood-2003-11-3900> PMID:15454488 PMCID:1847365
26. Ono M, Shimizu J, Miyachi Y, Sakaguchi S. Control of autoimmune myocarditis and multi-organ inflammation by G_{ITR}^{high} FoxP3⁻ expressing CD25⁺ and CD25⁻ regulatory T cells. *J Immunol* 2006; 176: 4748-4756. PMID:16585568
27. Horak I, Lohler J, Ma A, Smith KA. Interleukin-2 deficient mice: a new model to study autoimmunity and self-tolerance. *Immunol Rev* 1995; 148: 35-44. <http://dx.doi.org/10.1111/j.1600-065X.1995.tb00092.x> PMID:8825281
28. Aschenbrenner K, D'Cruz LH, Vollmann EH, Hintenberger M, Emmerich J, Swee LK, Rolink A, Klein L. Selection of FoxP3 regulatory T cells specific for self antigen expressed and presented by Aire⁺ medullary thymic epithelial cells. *Nature Immunol* 2007; 8: 351-358. <http://dx.doi.org/10.1038/ni1444> PMID:17322887
29. Piccirillo CA, Thornton AM. Cornerstone of peripheral tolerance: naturally occurring CD4+CD25+ regulatory T cells. *Trends Immunol* 2004; 25: 374-380. <http://dx.doi.org/10.1016/j.it.2004.04.009> PMID:15207505
30. Corthay A. How do regulatory T cells work? *Scand J Immunol* 2009; 70: 326-336. <http://dx.doi.org/10.1111/j.1365-3083.2009.02308.x> PMID:19751267 PMCID:2784904
31. Sakaguchi S, Wing K, Onishi Y, Prieto-Martin P, Yamaguchi T. Regulatory T cells: how do they suppress immune responses? *Int Immunol* 2009; 21: 1105-1111. <http://dx.doi.org/10.1093/intimm/dxp095> PMID:19737784
32. Thornton AM, Shevac EM. CD4+CD25+ immunoregulatory T cells suppress polyclonal T cell activation in vitro by inhibiting interleukin 2 production. *J Exp Med* 1998; 188: 287-296. <http://dx.doi.org/10.1084/jem.188.2.287> PMID:9670041 PMCID:2212461
33. Takahashi T, Kuniyasu Y, Toda M, Sakaguchi N, Itoh M, Iwata M, Shimizu J, Sakaguchi J. Immunologic self-tolerance maintained by CD25+CD4+ naturally anergic and suppressive T cells: induction of autoimmune disease by breaking their anergic/suppressive state. *Int Immunol* 1998; 10: 1969-1980. <http://dx.doi.org/10.1093/intimm/10.12.1969> PMID:9885918
34. Walunas TL, Bluestone JA. CTLA-4 regulates tolerance induction and T cell differentiation in vivo. *J Immunol* 1998; 160: 3855-3860. PMID:9558090
35. Shimizu J, Yamazaki S, Takahashi T, Ishida Y, Sakaguchi S. Stimulation of CD25+CD4+ regulatory T cells through G_{ITR} breaks immunological self-tolerance. *Nat Immunol* 2002; 3: 135-142. <http://dx.doi.org/10.1038/ni759> PMID:11812990
36. Deaglio S, Dwyer KM, Gao W, Friedman D, Usheva A, Erat A, Chen JF, Enjyoji K, Linden K, Oukka M, Kuchroo VK, Strom TB, Robson SC. Adenosine generations catalyzed by CD39 and CD73 expressed on regulatory T cells mediate immune suppression. *J Exp Med* 2007; 204: 1257-1265. <http://dx.doi.org/10.1084/jem.20062512> PMID:17502665 PMCID:2118603
37. Geissmann F, Revy P, Regnault A, Lepelletier Y, Dy M, Brousse N, Amigorena S, Hermine O, Durandy A. TGF- β 1 prevents the noncognate maturation of human dendritic Langherans cells. *J Immunol* 1999; 162: 4567-4575. PMID:10201996
38. Strobl H, Knapp W. TGF- β 1 regulation of dendritic cells. *Microbes Infection* 1999; 1: 1283-1290. [http://dx.doi.org/10.1016/S1286-4579\(99\)00256-7](http://dx.doi.org/10.1016/S1286-4579(99)00256-7)
39. Shevac EM. CD4+CD25+ suppressor T cells: more questions than answers. *Nat Rev Immunol* 2002; 2: 389-400. PMID:12093005
40. Taylor A, Vehagen J, Blaser K, Akdis M, Akdis CA. Mechanisms of immune suppression by interleukin-10 and transforming growth factor- β : the role of T regulatory cells. *Immunol* 2006; 117: 443-442.
41. Levings MK, Bacchetta R, Schulz U, Roncarolo MG. The role of IL-10 and TGF- β in the differentiation and effector function of T regulatory cells. *Int Arch Allergy Immunol* 2002; 129: 263-276. <http://dx.doi.org/10.1159/000067596> PMID:12483031
42. Grossman WJ, Verbsky JW, Barchet W, Colonna M, Atkinson JP, Ley TJ. Human T regulatory cells can use the perforin pathway to cause autologous target cell death. *Immunity* 2004; 21: 589-601. <http://dx.doi.org/10.1016/j.immuni.2004.09.002> PMID:15485635
43. Grossman WJ, Verbsky JW, Tollefsen BL, Kemper C, Atkinson JP, Levy TJ. Differential expression of granzymes A and B in human cytotoxic lymphocyte subsets and T regulatory cells. *Blood* 2004; 104: 2840-2848. <http://dx.doi.org/10.1182/blood-2004-03-0859> PMID:15238416
44. Chiorazzi N, Rai KR, Ferrarini M. Chronic lymphocytic leukemia. *N Engl J Med* 2005; 352: 804-815. <http://dx.doi.org/10.1056/NEJMra041720> PMID:15728813
45. Scrivener S, Goddard RV, Kaminski ER, Prentice AG. Abnormal T-cell function in B-cell chronic lymphocytic leukaemia. *Leuk Lymphoma* 2003; 44: 383-389. <http://dx.doi.org/10.1080/1042819021000029993>
46. Christopoulos P, Pfeifer D, Bartholome K, Follo M, Timmer J, Fisch P, Veelken H. Definition and characterization of the systemic T-cell dysregulation in untreated indolent B-cell lymphoma and very early CLL. *Blood* 2011; 117: 3836-3846. <http://dx.doi.org/10.1182/blood-2010-07-299321> PMID:21270444
47. Beyer M, Kochanek M, Darabi K, Popov A, Jensen M, Endl E, Knolle PA, Thomas RK, von Bergwelt-Baildon M, Debey S, Hallek M, Schulte JL. Reduced frequencies and suppressive function of CD4+CD25^{hi} regulatory T cells in patients with chronic lymphocytic leukemia after therapy with fludarabine. *Blood* 2005; 106: 2018-2025. <http://dx.doi.org/10.1182/blood-2005-02-0642> PMID:15914560
48. Giannopoulos K, Schmitt M, Kowal M, Wlasiuk P, Bojarska-Junak A, Chen J, Rolinski J, Dmoszynska A. Characterization of regulatory T cells in patients with B-cell chronic lymphocytic leukemia. *Oncol Rep* 2008; 20: 677-682. PMID:18695923
49. Deutsch V, Pierry C, Polliack A. Expansion of regulatory T cells in B chronic lymphocytic leukemia: enhanced 'brakes' on host immunity. *Leuk Lymphoma* 2009; 50: 687-688. <http://dx.doi.org/10.1080/10428190902954389>
50. Jak M, Mous R, Remmerswaal EBM, Spijker R, Jaspers A, Yague A, Eldering E, van Lier RAW, Van Oers MHJ. Enhanced formation and survival of CD4+CD25^{high}FoxP3⁺ T-cells in chronic lymphocytic leukemia. *Leuk Lymphoma* 2009; 50: 788-801. <http://dx.doi.org/10.1080/10428190902803677>
51. D'Arena G, Laurenti L, Minervini MM, Deaglio S, Bonello L, De Martino L, De Padua L, Savino L, Tarnani M, De Feo V, Cascavilla N. Regulatory T-cell number is increase in chronic lymphocytic leukemia patients and correlate with progressive disease. *Leuk Res* 2011; 35: 363-368. <http://dx.doi.org/10.1016/j.leukres.2010.08.010> PMID:20880586
52. Giannopoulos K, Schmitt M, Wlasiuk P, Chen J, Bojarska-Junak A, Kowal M, Rolinski J, Dmoszynska A. The high frequency of T regulatory cells in patients with B-cell chronic lymphocytic leukemia is diminished through treatment with thalidomide. *Leukemia* 2008; 22: 222-224. <http://dx.doi.org/10.1038/sj.leu.2404869> PMID:17657216
53. Valencia X, Stephens G, Goldbach-Mansky R, Wilson M, Shevach EM, Lipsky PE. TNF downmodulates the function of human CD4+CD25^{hi} T-regulatory cells. *Blood* 2006; 108: 253-261. <http://dx.doi.org/10.1182/blood-2005-11-4567> PMID:16537805 PMCID:1895836
54. Ramsay AG, Gribben JG. Immune dysfunction in chronic lymphocytic leukemia T cells and Lenalidomide as an immunomodulatory drug. *Haematologica* 2009; 94: 1198-1202. <http://dx.doi.org/10.3324/haematol.2009.009274> PMID:19734414 PMCID:2738710
55. Lee B-N, Gao H, Cohen EN, Badoux X, Wierda WG, Estrov Z, Faderl SH, Keating MJ, Ferrajoli A, Reuben JM. Treatment with Lenalidomide modulates T-cell immunophenotype and cytokine production in patients with chronic lymphocytic leukemia. *Cancer* 2011; 117: 3999-4008. <http://dx.doi.org/10.1002/ncr.25983> PMID:21858802
56. Weiss L, Melchardt T, Egle A, Grabmer C, Greil R, Tinhofer I. Regulatory T cells predict the time to initial treatment in early stage chronic lymphocytic leukemia. *Cancer* 2011; 117: 2163-2169. <http://dx.doi.org/10.1002/ncr.25752> PMID:21523729

57. D'Arena G, D'Auria F, Simeon V, Laurenti L, Deaglio S, Mansueto G, Del Principe MI, Statuto T, Pietrantuono G, Guariglia R, Innocenti I, Martorelli MC, Villani O, De Feo V, Del Poeta G, Musto P. A shorter time to the first treatment may be predicted by the absolute number of regulatory T-cells in patients with Rai stage 0 chronic lymphocytic leukemia. *Am J Hematol* 2012; 87: 628-631. <http://dx.doi.org/10.1002/ajh.23170> PMID:22460620
58. Hallek M, Cheson BD, Catovsky D, Caligaris-Cappio F, Dighiero G, Döhner H, Hillmen P, Keating MJ, Montserrat E, Rai KR, Kipps JK. Guidelines for the diagnosis and treatment of chronic lymphocytic leukemia: a report from the International Workshop on Chronic Lymphocytic Leukemia updating the National Cancer Institute – Working Group 1996 Guidelines. *Blood* 2008; 111: 5446-5456. <http://dx.doi.org/10.1182/blood-2007-06-093906> PMID:18216293 PMCID:2972576
59. D'Arena G, Rossi G, Minervini MM, Savino L, D'Auria F, Laurenti L, Del Principe MI, Deaglio S, Biagi A, De Martino L, De Feo V, Cascavilla N, Musto P, Del Poeta G. Circulating regulatory T cells in "clinical" monoclonal B-cell lymphocytosis. *Int J Immunopathol Pharmacol* 2011; 24: 915-923. PMID:22230398
60. Chatila TA. Role of regulatory T cells in human disease. *J Allergy Clin Immunol* 2005; 116: 949-959. <http://dx.doi.org/10.1016/j.jaci.2005.08.047> PMID:16275360
61. Colombo MP, Piconese S. Regulatory T-cell inhibition versus depletion: the right choice in cancer immunotherapy. *Nature Rev* 2007; 7: 880-887. <http://dx.doi.org/10.1038/nrc2250> PMID:17957190
62. Brusko TM, Putnam AL, Bluestone JA. Human regulatory T cells: role in autoimmune disease and therapeutic opportunities. *Immunol Rev* 2008; 223: 371388. <http://dx.doi.org/10.1111/j.1600-065X.2008.00637.x> PMID:18613848
63. Nizar S, Copier J, Meyer B, Bodman-Smith M, Galustian C, Kumar D, Dalglish A. T-regulatory cell modulation: the future of cancer immunotherapy? *Br J Cancer* 2009; 100: 1697-1703. <http://dx.doi.org/10.1038/sj.bjc.6605040> PMID:19384299 PMCID:2695683
64. D'Arena G, Deaglio S, Laurenti L, De Martino L, De Feo V, Fusco BM, Carella AM, Cascavilla N, Musto P. Targeting regulatory T cells for anticancer therapy. *Mini-Rev Med Chem* 2011; 11: 480-485. <http://dx.doi.org/10.2174/138955711795843365> PMID:21561409
65. Wright GP, Ehrenstein MR, Stauss HJ. Regulatory T-cell adoptive immunotherapy: potential for treatment of autoimmunity. *Expert Rev Clin Immunol* 2011; 7: 213-225. <http://dx.doi.org/10.1586/eci.10.96> PMID:21426259