

Spoligotyping analysis of *Mycobacterium tuberculosis* in Khyber Pakhtunkhwa area, Pakistan

This article was published in the following Dove Press journal:
Infection and Drug Resistance

Sajid Ali¹
Muhammad Tahir Khan²
Khan Anwar Sheed³
Muhammad Mumtaz Khan⁴
Fariha Hasan¹

¹Department of Microbiology, Quaid-i-Azam University, Islamabad, Pakistan;

²Department of Bioinformatics and Biosciences, Capital University of Science and Technology, Islamabad, Pakistan;

³Provincial TB Reference Laboratory, Provincial TB Control Program, Khyber Pakhtunkhwa, Pakistan; ⁴Department of Microbiology, University of Haripur, Haripur, Pakistan

Background: Spoligotyping is a reproducible, reverse hybridization approach for genotyping of *Mycobacterium tuberculosis* complex (MTBC). Molecular typing of MTBC is helpful for understanding and controlling tuberculosis epidemics.

Methods: Spoligotyping was performed on 166 clinical isolates of *Mycobacterium tuberculosis* (MTB) collected from 25 districts of Khyber Pakhtunkhwa, Pakistan. Results were compared to SITVIT2, an online database developed by the Institut Pasteur de la Guadeloupe, France.

Results: Spoligotyping results showed that 145 strains (88%) displayed known patterns while 21 (12%) were new. Lineage 3/Central Asian strain (L3/CAS) was the predominant family (73%, $\chi^2=19.9$, $P=0.001$), followed by L2/Beijing (5.4%) and L4 (4.2%). L3/CAS1-Delhi was the major sublineage (82%) among the L3/CAS family ($\chi^2=664$, $P=0.0001$). Analysis showed that the majority of the clinical isolates with an unknown pattern had an evolutionary link with the L3/CAS strain, and nine (5.4%) of the unknown strains were epidemiologically linked and were tentatively named L3/CAS-KP (Khyber Pakhtunkhwa).

Conclusion: The present study demonstrated that L3/CAS is the predominant lineage of MTB, widely distributed in different areas of the Khyber Pakhtunkhwa province of Pakistan. Spoligotyping patterns of some clinical isolates could not be matched to other reported patterns in an international database. Other tools, such as mycobacterial interspersed repetitive unit-variable number tandem repeat (MIRU-VNTR), will be helpful in future investigations into the epidemiological characteristics of clinical isolates in the Khyber Pakhtunkhwa province.

Keywords: spoligotyping, VNTR, L3/CAS, genotyping, molecular characterization, genetic diversity

Introduction

Tuberculosis (TB) has become a major public health problem in Pakistan over the past few decades, and was declared a global emergency by the WHO in 1993. Various national as well as international authorities are highly concerned and are contributing their efforts to abolish TB. Pakistan is among 22 countries identified by the WHO for its high burden of TB cases reported annually. Drug resistance is a major obstacle to TB control in Pakistan.^{1,2} Millions of Afghan refugees have seasonal traffic between the two countries, which suggests an epidemiological linkage and evolutionary genomic characteristics of *Mycobacterium tuberculosis* (MTB) strains in Pakistan. The genome of MTB contains variable copies of 36 bp direct repeats (DRs) in a specific locus, the CRISPR (clustered regularly interspaced short palindromic repeats) locus. These DR loci are interspersed with 34–41

Correspondence: Fariha Hasan
Department of Microbiology, Quaid-i-Azam University, 45320, Islamabad, Pakistan
Tel +920 519 064 3065
Email farihasan@yahoo.com

bp conserved sequences called spacers. More than 100 spacers have been identified so far; however, only 43 spacers are used for genotyping while the others contribute only a small amount of information.³ This set of 43 unique spacer sequences has been used to classify MTB strains based on the pattern of the presence or absence of DRs.⁴ Variation in the number of spacers contributes to combinational or individual effects of the genomic process, such as homologous recombination, DNA replication or transposition of the IS6110 element in the DR locus. The function of CRISPR in bacterial metabolism and its relationship with the spacers have not yet been well defined in MTB;⁵ however, it is evident from the literature that certain patterns of DRs are linked to evolutionary processes.³

Spoligotyping is one of the most highly adopted PCR-based methods for genotyping analysis and is considered both reliable and cost-effective as a first-line genotyping method. Various new techniques have been proposed for spoligotyping analysis, including the DNA microarray,⁶ PixSysn QUAD 4500 Microarrayer,⁷ TB-SPRINT⁸ and hydrogel microarray.⁹ TB-SPRINT is a microbead assay that provides a spoligotyping profile and simultaneous detection of common mutations in the hot-spot regions of *rpoB*, *katG* and *inhA* genes to evaluate drug resistance to rifampicin and isoniazid in MTB. TB-SPRINT is a useful tool for epidemiological studies of TB in resource-limited countries because of its high throughput and acceptable cost.⁸ The aim of the current study was to investigate the epidemiological link between MTB strains and their genotypic families found in Pakistan using the spoligotyping method.

Methods

This study was approved by the research and ethics committee of the Provincial TB Control Program Khyber Pakhtunkhwa (TB/KP/R&D-25-17). Samples for the current study were collected at the Provincial TB Reference Laboratory, Peshawar, which is equipped with a biosafety level-III (BSL-III) facility. Samples were digested and decontaminated using a standard N-acetyl-L-cysteine sodium hydroxide (NALC-NaOH) method. Decontaminated samples were inoculated on Lowenstein-Jensen (LJ) medium and a mycobacterium growth indicator tube (MGIT). Positive growth in the tubes was confirmed using a TBc Identification Test device (ref. 245159; Becton Dickinson, Franklin Lakes, NJ, USA). All confirmed mycobacterial isolates were subsequently processed for genotyping analysis targeting the DR locus in MTB, as

described by Kamerbeek et al.⁴ DNA was extracted from the culture using the cetyl-trimethyl-ammonium-bromide (CTAB) method.⁴

Spoligotyping assay was performed on all samples using a Luminex 200 (Luminex Corp., Austin, TX, USA) instrument.⁸ Spoligotype patterns were entered in binary format into the SITVIT2, a proprietary database of the Institut Pasteur de la Guadeloupe, which is an updated version of the SpolDB4 and SITVIT-WEB databases.^{10,11} Clinical isolates were initially grouped in one of nine lineage and sublineages: L1/EAI, L2/Beijing, L3/CAS, L4.1.1/X, L4.1.2/Haarlem, L4.3/LAM, L4.4/S, L4/T-others, L5 and L6 (*Mycobacterium africanum* WA1 and WAS2).¹¹ The selected clinical isolates that matched with a published spoligo-international type (SIT) were assigned with the corresponding SIT label, while strains with an unknown pattern were declared “orphans”. Lineages were deduced based on the latest next-generation sequencing-based taxonomy when correspondence between whole-genome-based and spoligotyping-based taxonomy was possible.^{12,13} All strains whose pattern did not fall within the above-mentioned lineages were declared new patterns. Furthermore, the patterns of all strains originating from Pakistan were collected from the SITVIT2 database. Evolutionary relationships between the unclustered spoligotype patterns and strains reported from Pakistan were determined using MEGA7 software.¹⁴

The genetic diversity was laid out as a maximum parsimony (MP) tree construct using default settings in MEGA7. The phylogenetic tree was constructed using the subtree-pruning-regrafting (SPR) algorithm, taking the 43 DR pattern as a sequence.¹⁴

Results

In total, 200 isolates of MTB were analyzed by the spoligotyping method. Of these isolates, 166 produced valid and interpretable results. Patterns of 145 isolates were found in the international database (SITVIT2) and 21 unique patterns (13%) were declared new types (Table 1). The results showed that lineage 3/Central Asian strain (L3/CAS) was the predominant genotype lineage with 72.8% (n=121), followed by L2/Beijing with 5.4% (n=9) and L4/T with 4.2% (n=7), and 4.8% (n=8) were other unknown types (Figure 1).

Cluster analysis of widely distributed lineages

Detailed analysis of L3/CAS resulted in 11 different clusters or sub-families. Among the sub-families, L3/CAS1-Delhi

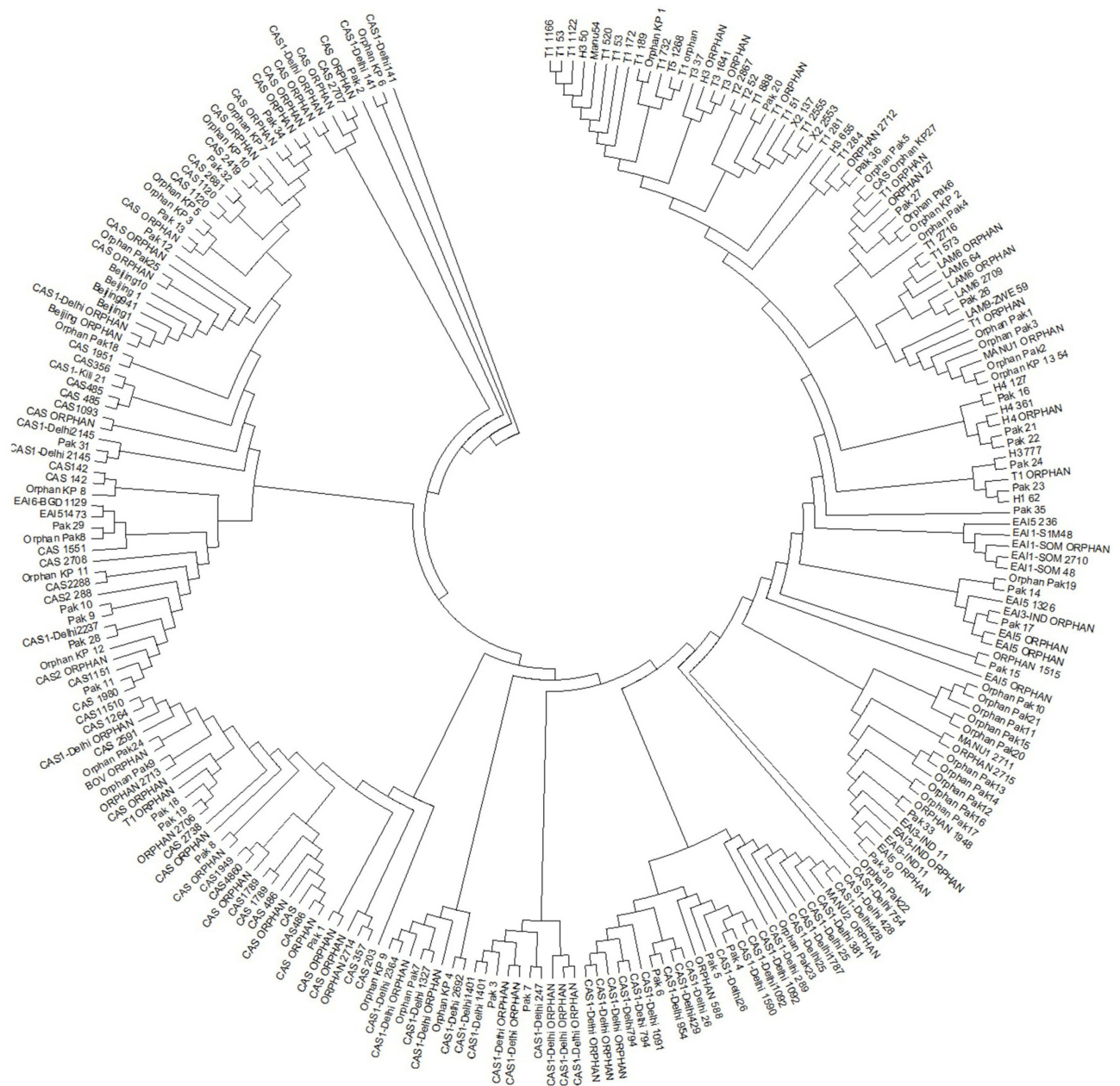


Figure 2 Maximum parsimony analysis of new unclustered spoligotypes.

repeat (MIRU-VNTR) and spoligotyping. The spoligotyping technique has been used worldwide for genotyping and as a first-line method in epidemiological studies of MTB, in conjunction with VNTR analysis. It was originally developed by Kamerbeek et al, based on identical DRs interspersed by short spacers of variable length.⁴ A public database, SITVIT2, is available for the analysis of spoligotyping patterns, which consists of 111,635 clinical isolates from 169 countries of patient origin.²⁰ The distribution of these spoligotypes was analyzed among the 20 studied subregions. It is evident from the literature that these genotypes are specific to

certain geographical regions; for example, L4.3/LAM is geographically widely distributed in South America, followed by L4.1/T and L4.1.2/Haarlem lineage, at 49.3%, 26.7% and 15.7%, respectively. Similarly, L1/EAI is geographically distributed in South-East Asia and L3/CAS in Middle-East Asia.^{11,21}

Our study represents the first molecular characterization of TB bacilli in the study area and may be useful for better management of TB and drug resistance.²² Considering the spoligotyping patterns of the majority of the strains, the current study confirmed a diverse population structure with

a total of 55 different types, whether clustered or not. However, by far the most dominant lineage was L3/CAS-1 Delhi, which belongs to the L3/CAS lineage. Overall, the distribution of genotypes in Khyber Pakhtunkhwa was in line with other spoligotyping analysis in Pakistan.^{16,19,21} However, we do not report any genotype of L4.5 “NEW-1”, an emerging genotype in Pakistan, since no SIT127 types were observed.²³ Spoligotyping, in some cases, is not able to identify L4.5, which is better characterized by RD122, specific VNTR signatures and specific single-nucleotide polymorphisms.^{13,23} A rather important population of 12% of strains could not be matched to the internationally defined genotypes in the database and was declared “new”. In previous investigations, the spoligotyping patterns of new genotypes were underestimated and left unstudied.^{16,19} In-depth analysis revealed clear identification of L3/CAS by the presence of the first three spacers followed by a set of four absent spacers (4–7) and two more spacers (33–34). We confirmed that the majority of the new spoligotypes in this study were likely to have evolved from L3/CAS, characterized by the absence of spacers 4–7 and 23–34, as changes in the DR locus are most likely to occur via consecutive irreversible deletions of either single or contiguous blocks.^{3,24}

The current study provides basic information on the geographical distribution of MTB strains in Khyber Pakhtunkhwa, Pakistan. It has some limitations for the time being, since spoligotyping-based clusters were not further studied using VNTR. However, such comparisons of spoligotypes may not be representative of the true phylogenetic relationships owing to genetic convergence. By contrast, DNA sequencing can be used to determine the true evolution.

Conclusion

We found that L3/CAS is the predominant lineage, which is likely to be epidemiologically linked in many cases, and the majority of the unclustered L3 strains are likely to have evolved from pre-existing L3/CAS strains based on the MP analysis tree construct. Other tools, such as MIRU-VNTR in combination with spoligotyping, would help us to further explore the molecular epidemiology of MTB in our study area.

Acknowledgments

This paper was published in *Journal of Biological Regulators and Homeostatic Agents*, 2018;32(2):195–198 (PMID 29685006; <https://www.ncbi.nlm.nih.gov/pubmed/?term=SPOLIGOTYPING+ANALYSIS+OF+MYCOBACTERIUM+TUBERCULOSIS+WITH+TB->

SPRINT+TECHNOLOGY). The paper was withdrawn by authors for reanalysis of the results. We are thankful to Christophe Sola, Harrison M Gomes, Erica Chimara, and the Provincial TB Control Program Khyber Pakhtunkhwa, BSL-III laboratory facility manager, for ethical support.

Disclosure

The authors report no conflicts of interest in this work.

References

1. Khan MT, Malik SI, Ali S, et al. Pyrazinamide resistance and mutations in *pncA* among isolates of *Mycobacterium tuberculosis* from Khyber Pakhtunkhwa, Pakistan. *BMC Infect Dis*. 2019;19(1):116. doi:10.1186/s12879-019-3764-2
2. Khan MT, Malik SI, Bhatti AI, et al. Pyrazinamide-resistant *Mycobacterium tuberculosis* isolates from Khyber Pakhtunkhwa and *rpsA* mutations. *J Biol Regul Homeost Agents*. 2018;32(3):705–709.
3. van Embden JD, van Gorkom T, Kremer K, Jansen R, van Der Zeijst BA, Schouls LM. Genetic variation and evolutionary origin of the direct repeat locus of *Mycobacterium tuberculosis* complex bacteria. *J Bacteriol*. 2000;182(9):2393–2401.
4. Kamerbeek J, Schouls L, Kolk A, et al. Simultaneous detection and strain differentiation of *Mycobacterium tuberculosis* for diagnosis and epidemiology. *J Clin Microbiol*. 1997;35(4):907–914.
5. Jansen R, van Embden JDA, Gastra W, Schouls LM. Identification of a novel family of sequence repeats among prokaryotes. *Omic J Integr Biol*. 2002;6(1):23–33. doi:10.1089/15362310252780816
6. Ruettger A, Nieter J, Skrypnik A, et al. Rapid spoligotyping of *Mycobacterium tuberculosis* complex bacteria by use of a microarray system with automatic data processing and assignment. *J Clin Microbiol*. 2012;50(7):2492–2495. doi:10.1128/JCM.00442-12
7. Song EJ, Jeong HJ, Lee SM, et al. A DNA chip-based spoligotyping method for the strain identification of *Mycobacterium tuberculosis* isolates. *J Microbiol Methods*. 2007;68(2):430–433. doi:10.1016/j.mimet.2006.09.005
8. Gomgnimbou MK, Hernández-Neuta I, Panaiotov S, et al. Tuberculosis-spoligo-rifampin-isoniazid typing: an all-in-one assay technique for surveillance and control of multidrug-resistant tuberculosis on Luminex devices. *J Clin Microbiol*. 2013;51(11):3527–3534. doi:10.1128/JCM.01523-13
9. Bespyatykh JA, Zimenkov DV, Shitikov EA, et al. Spoligotyping of *Mycobacterium tuberculosis* complex isolates using hydrogel oligonucleotide microarrays. *Infect Genet Evol J Mol Epidemiol Evol Genet Infect Dis*. 2014;26:41–46. doi:10.1016/j.meegid.2014.04.024
10. Brudey K, Driscoll JR, Rigouts L, et al. *Mycobacterium tuberculosis* complex genetic diversity: mining the fourth international spoligotyping database (SpolDB4) for classification, population genetics and epidemiology. *BMC Microbiol*. 2006;6:23. doi:10.1186/1471-2180-6-23
11. Demay C, Liens B, Burguière T, et al. SITVITWEB – a publicly available international multimer database for studying *Mycobacterium tuberculosis* genetic diversity and molecular epidemiology. *Infect Genet Evol*. 2012;12(4):755–766. doi:10.1016/j.meegid.2012.02.004
12. Coll F, Preston M, Guerra-Assunção JA, et al. PolyTB: a genomic variation map for *Mycobacterium tuberculosis*. *Tuberc Edinb Scotl*. 2014;94(3):346–354. doi:10.1016/j.tube.2014.02.005

13. Stucki D, Brites D, Jeljeli L, et al. Mycobacterium tuberculosis lineage 4 comprises globally distributed and geographically restricted sublineages. *Nat Genet.* 2016;48(12):1535–1543. doi:10.1038/ng.3704
14. Kumar S, Stecher G, Tamura K. MEGA7: Molecular Evolutionary Genetics Analysis version 7.0 for bigger datasets. *Mol Biol Evol.* 2016;msw054. doi:10.1093/molbev/msw054
15. Gascoyne-Binzi DM, Barlow REL, Essex A, et al. Predominant VNTR family of strains of Mycobacterium tuberculosis isolated from South Asian patients. *Int J Tuberc Lung Dis Off J Int Union Tuberc Lung Dis.* 2002;6(6):492–496. doi:10.5588/09640569512995
16. Hasan Z, Tanveer M, Kanji A, Hasan Q, Ghebremichael S, Hasan R. Spoligotyping of Mycobacterium tuberculosis isolates from Pakistan reveals predominance of Central Asian Strain 1 and Beijing isolates. *J Clin Microbiol.* 2006;44(5):1763–1768. doi:10.1128/JCM.44.5.1763-1768.2006
17. Ali A, Hasan Z, Tanveer M, et al. Characterization of Mycobacterium tuberculosis Central Asian Strain1 using mycobacterial interspersed repetitive unit genotyping. *BMC Microbiol.* 2007;7:76. doi:10.1186/1471-2180-7-76
18. Ayaz A, Hasan Z, Jafri S, et al. Characterizing Mycobacterium tuberculosis isolates from Karachi, Pakistan: drug resistance and genotypes. *Int J Infect Dis.* 2012;16(4):e303–e309. doi:10.1016/j.ijid.2011.12.015
19. Yasmin M, Gomgnimbou MK, Siddiqui RT, Refrégier G, Sola C. Multi-drug resistant Mycobacterium tuberculosis complex genetic diversity and clues on recent transmission in Punjab, Pakistan. *Infect Genet Evol.* 2014;27:6–14. doi:10.1016/j.meegid.2014.06.017
20. Couvin D, David A, Zozio T, Rastogi N. Macro-geographical specificities of the prevailing tuberculosis epidemic as seen through SITVIT2, an updated version of the Mycobacterium tuberculosis genotyping database. *Infect Genet Evol.* 2018. doi:10.1016/j.meegid.2018.12.030
21. Tanveer M, Hasan Z, Siddiqui AR, et al. Genotyping and drug resistance patterns of M. tuberculosis strains in Pakistan. *BMC Infect Dis.* 2008;8(1):171. doi:10.1186/1471-2334-8-171
22. Khan MT, Malik SI, Ali S, et al. Prevalence of pyrazinamide resistance in Khyber Pakhtunkhwa, Pakistan. *Microb Drug Resist Larchmt N.* 2018;24:1417–1421. doi:10.1089/mdr.2017.0234
23. Mokrousov I, Shitikov E, Skiba Y, Kolchenko S, Chernyaeva E, Vyazovaya A. Emerging peak on the phylogeographic landscape of Mycobacterium tuberculosis in West Asia: definitely smoke, likely fire. *Mol Phylogenet Evol.* 2017;116:202–212. doi:10.1016/j.ympev.2017.09.002
24. Sola C, Filliol I, Gutierrez MC, Mokrousov I, Vincent V, Rastogi N. Spoligotype database of Mycobacterium tuberculosis: biogeographic distribution of shared types and epidemiologic and phylogenetic perspectives. *Emerg Infect Dis.* 2001;7(3):390. doi:10.3201/10.3201/eid0703.0107304

Infection and Drug Resistance

Dovepress

Publish your work in this journal

Infection and Drug Resistance is an international, peer-reviewed open-access journal that focuses on the optimal treatment of infection (bacterial, fungal and viral) and the development and institution of preventive strategies to minimize the development and spread of resistance. The journal is specifically concerned with the epidemiology of

antibiotic resistance and the mechanisms of resistance development and diffusion in both hospitals and the community. The manuscript management system is completely online and includes a very quick and fair peer-review system, which is all easy to use. Visit <http://www.dovepress.com/testimonials.php> to read real quotes from published authors.

Submit your manuscript here: <https://www.dovepress.com/infection-and-drug-resistance-journal>