



OPEN ACCESS

ORIGINAL ARTICLE

# Prognostic impact of blood pressure response plus gadolinium enhancement in dilated cardiomyopathy

Emi Tateishi,<sup>1,2</sup> Teruo Noguchi,<sup>1</sup> Yoichi Goto,<sup>1</sup> Yoshiaki Morita,<sup>3</sup> Hatsue Ishibashi-Ueda,<sup>4</sup> Naoaki Yamada,<sup>3</sup> Hideaki Kanzaki,<sup>1</sup> Kunihiro Nishimura,<sup>5</sup> Yoshihiro Miyamoto,<sup>5</sup> Toshihisa Anzai,<sup>1</sup> Hisao Ogawa,<sup>1,6</sup> Satoshi Yasuda<sup>1,2</sup>

► Additional material is published online only. To view please visit the journal online (<http://dx.doi.org/10.1136/heartjnl-2014-307007>).

For numbered affiliations see end of article.

## Correspondence to

Dr Teruo Noguchi,  
Department of Cardiovascular  
Medicine, National Cerebral  
and Cardiovascular Center,  
5-7-1 Fujishirodai, Suita,  
Osaka 565-8565, Japan;  
[tnoguchi@hsp.ncvc.go.jp](mailto:tnoguchi@hsp.ncvc.go.jp)

Received 25 October 2014  
Accepted 11 February 2015  
Published Online First  
11 March 2015

## ABSTRACT

**Objective** Late gadolinium enhancement (LGE) is not necessarily ideal for detecting diffuse myocardial fibrosis in idiopathic dilated cardiomyopathy (DCM). Since systolic blood pressure response (SBPR) during exercise has been proposed to reflect cardiac pump reserve in patients with heart failure, we wished to determine whether LGE plus SBPR is a better prognostic factor in patients with DCM.

**Methods** LGE and cardiopulmonary exercise testing results in consecutive 207 patients with DCM were examined. Patients were divided into four groups according to the presence or absence of LGE and the SBPR cut-off value of +40 mm Hg according to receiver operating characteristic curve analysis: LGE-positive+SBPR <40 mm Hg (n=65), LGE-positive+SBPR ≥40 mm Hg (n=40), LGE-negative+SBPR <40 mm Hg (n=33) and LGE-negative+SBPR ≥40 mm Hg (n=69). The composite end point was cardiac death, cardiac transplantation, LV assist device implantation, life-threatening arrhythmia or heart failure.

**Results** Forty-two (20%) patients developed the composite end point, with rates of 35%, 20%, 21% and 6% in patients with LGE-positive+SBPR <40 mm Hg, LGE-positive+SBPR ≥40 mm Hg, LGE-negative+SBPR <40 mm Hg and LGE-negative+SBPR ≥40 mm Hg status, respectively. Multivariable Cox regression analysis identified LGE-positive and SBPR <40 mm Hg as a significant independent predictor of cardiac events (HR 2.08, 95% CI 1.06 to 4.11, p=0.034). Of note, there was no significant difference in the cardiac event-free survival rate between the LGE-positive+SBPR ≥40 mm Hg and LGE-negative+SBPR <40 mm Hg groups (p=0.736).

**Conclusions** The combination of LGE and SBPR provides more clinically relevant information for assessing the risk of cardiac events in patients with DCM than LGE status alone.

found in idiopathic dilated cardiomyopathy (DCM).<sup>8</sup> Thus, patients at high risk for cardiac events may have been missed in prior studies that investigated the presence of LGE alone.<sup>5–7</sup>

Peak oxygen uptake (peak VO<sub>2</sub>) or the regression slope relating minute ventilation to carbon dioxide output (VE/VCO<sub>2</sub> slope) has been used to identify patients with either ischaemic or non-ischaemic cardiomyopathy at high risk for cardiac death or in need of cardiac transplantation.<sup>9–10</sup> As a simpler and more convenient index, Williams *et al*<sup>11</sup> and Kallistratos *et al*<sup>12</sup> reported that peak systolic blood pressure (SBP) during exercise was associated with all-cause mortality and cardiac mortality in patients with chronic heart failure (HF). Blood pressure response (BPR) during exercise has been proposed as a marker of haemodynamic instability in patients with chronic HF.<sup>12–14</sup> Based on these previous studies, systolic BPR (SBPR) during exercise testing may reflect cardiac pump performance reserve, which may correspond to the extent of diffuse interstitial myocardial fibrosis.

We hypothesised that the combination of LGE and SBPR may provide more precise information for risk stratification in patients with DCM than LGE alone. The aim of this study was to evaluate the predictive value of the combination of LGE and SBPR for cardiac outcomes in patients with DCM.

## METHODS

### Study population

We conducted a prospective observational study of 207 consecutive patients with DCM at National Cerebral and Cardiovascular Center, Suita, Japan, between April 2005 and December 2012. The diagnosis of DCM was made based on WHO criteria.<sup>15</sup> All patients underwent invasive coronary angiography to exclude significant coronary artery stenosis (>50% diameter stenosis). Myocarditis, hypertrophic cardiomyopathy, secondary cardiomyopathy, valvular heart disease and hypertensive heart disease were excluded. Symptom-limited maximal cardiopulmonary exercise testing (CPX) and CMR were performed while the patient was in a clinically stable, non-congested condition (New York Heart Association (NYHA) functional class ≤II). The median duration between hospital admission and CMR and CPX was 15 days and 25 days, respectively.

### CMR protocol

CMR examinations were performed using a 1.5-T system (Magnetom Sonata, Siemens, Erlangen,



Open Access  
Scan to access more  
free content



► <http://dx.doi.org/10.1136/heartjnl-2014-307426>



CrossMark

**To cite:** Tateishi E, Noguchi T, Goto Y, *et al*. *Heart* 2015;101:774–780.

## INTRODUCTION

Late gadolinium enhancement (LGE) on cardiac magnetic resonance (CMR) has emerged as a first-line non-invasive modality for investigating the aetiology of myocardial dysfunction<sup>1–2</sup> and evaluating cardiac prognosis in patients with ischaemic<sup>3–4</sup> or non-ischaemic cardiomyopathy.<sup>5–7</sup> However, since LGE relies on the difference in signal intensity between focal myocardial fibrosis and normal myocardium, it is limited in its ability to detect diffuse interstitial fibrosis, which is commonly

Germany) with a four-channel surface coil. The procedures used to acquire MR images in this study have been previously described.<sup>16</sup> We identified LGE using a segmented inversion-recovery prepared true fast imaging with steady state precession sequence with ECG triggering at 10 min after the administration of 0.15 mmol/kg body weight of gadolinium diethylenetriamine pentaacetic acid. LGE data was obtained during the mid-diastolic phase with an inversion time of 300 ms.<sup>16 17</sup> Other imaging variables consisted of 65 segments, echo time 1.73 ms, flip angle 60°, field-of-view 340×255 mm, matrix 256×129 and voxel size 1.3×2.0×8.0 mm<sup>3</sup>. We also acquired cine imaging using a true fast imaging with steady state precession sequence (echo time 1.3 ms, repetition time 2.6 ms, flip angle 60°, slice thickness 8 mm, gaps 2 mm, inplane resolution 4.17×2.73 mm) over multiple breath holds in contiguous short-axis slices encompassing the entire LV and three standard long-axis slices.

### LGE analysis

Two experienced radiologists who were blinded to clinical data and outcomes independently determined the presence and location of LGE. LGE was only considered present if it was visible in two orthogonal views. **Figure 1** shows representative LGE-positive (A–C) and LGE-negative (D) cases. LGE pattern was characterised as mid-wall (**figure 1A**), diffuse (**figure 1B**) or focal (**figure 1C**). We categorised LGE-positive patients as having a mid-wall (n=52), diffuse (n=34) or focal LGE pattern (n=19), respectively. Interobserver and intraobserver agreement was evaluated for all study patients, and the  $\kappa$  values for interobserver and intraobserver agreement for the presence of LGE were 0.89 and 0.90, respectively. A third blinded reader adjudicated in cases with disagreement (n=10, 4.8%).

For quantification of LV volumes and LVEF, we manually traced the LV endocardial contours in end-systolic and end-

diastolic frames in cine imaging with a dedicated software program (Argus system, Siemens, Erlangen, Germany).

### Exercise testing protocol

CPX was performed on a stationary cycle ergometer (AE-300, Minato; Tokyo, Japan). Blood pressure was measured every 60 s during exercise. SBPR was calculated as the difference in SBP between peak exercise and rest. During CPX, peak VO<sub>2</sub> and VE/VCO<sub>2</sub> slope were also measured.

### Determination of BNP

Blood samples were collected in tubes containing EDTA, and plasma brain natriuretic peptide (BNP) was measured using a validated and commercially available immunoassay kit (Tosoh Co, Tokyo, Japan).

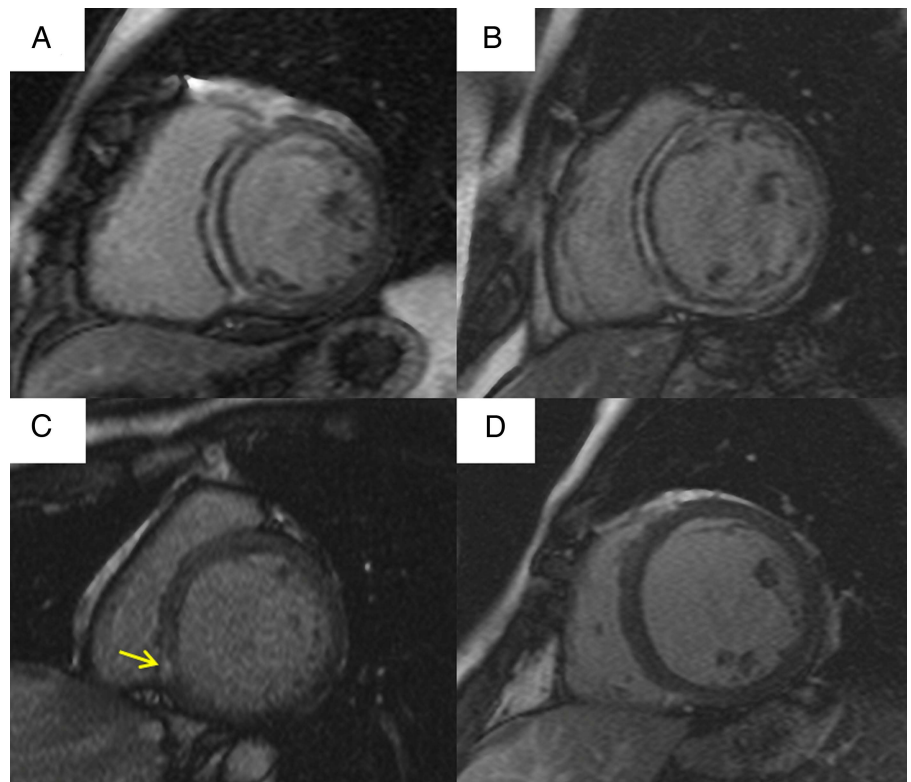
### Follow-up and end points

After CMR data were obtained, study patients were followed at 3 months, 6 months, and 12 months and annually thereafter until the occurrence of one of the following cardiac events: cardiac death, cardiac transplantation, LV assist device implantation, appropriate implantable cardioverter-defibrillator discharge for ventricular tachycardia (VT) or ventricular fibrillation (Vf), and rehospitalisation for HF. Independent attending cardiologists blinded to the patient's LGE and SBPR status reviewed charts to determine if hospitalisations and deaths qualified as cardiac events. No patients were lost to follow-up.

### Statistical analysis

All continuous variables are presented as means±SD and unpaired t tests were used to compare groups. Analysis of variance was used to compare means across multiple groups. Non-continuous and categorical variables are presented as frequencies or percentages and were compared using the  $\chi^2$  test. If a four-group comparison was statistically significant, then post

**Figure 1** Representative examples of short-axis LGE-positive and LGE-negative images. A, B and C are short-axis images from LGE-positive patients. The typical LGE pattern in DCM is mid-wall enhancement in the interventricular septum (A). A diffuse pattern was observed in 34 out of 105 LGE-positive patients (B). Nineteen patients had focal enhancement (C, arrow). **Figure 1D** is a representative example of a LGE-negative case. DCM, dilated cardiomyopathy; LGE, late gadolinium enhancement.



hoc pairwise comparisons between each pair were performed to demonstrate which pair was significantly different. The Tukey-Kramer test was used to compare continuous variables and the  $\chi^2$  test with Bonferroni correction was used for categorical variables. Cumulative event-free survival curves were estimated using the Kaplan-Meier method and compared using the log-rank test. SBPR cut-off values were determined based on receiver operating characteristics (ROC) analysis. Univariable Cox proportional hazards regression models were used to calculate HRs for all cardiac events and 95% CIs. Multivariable Cox regression analysis was performed using covariates that significantly predicted all cardiac events in the univariable analysis, as well as established prognostic risk factors for chronic HF. Stepwise selection with a p value of 0.1 for backward elimination was used to select the best predictive model. All statistical tests were two-sided and p values <0.05 were regarded as statistically significant. Statistical analysis was performed with JMP V.9.0.2 (SAS Institute, Cary, North Carolina, USA) and STATA, V.12 (StataCorp LP, College Station, Texas, USA).

## RESULTS

### SBPR cut-off value for predicting the development of cardiac events

During a median follow-up of 44 months (IQR, 23–62 months), cardiac events were observed in 42 of 207 study patients. The median SBPR elevation for patients with or without cardiac events was significantly different, 32 mm Hg and 46 mm Hg, respectively ( $p < 0.001$ ). Based on ROC curve analysis, the optimal SBPR cut-off value for developing cardiac events was 40 mm Hg. The area under the ROC curve was 0.70 (figure 2A). At this value, the sensitivity and specificity for predicting a cardiac event were 72.1% and 66.8%, respectively. Based on this result, we divided

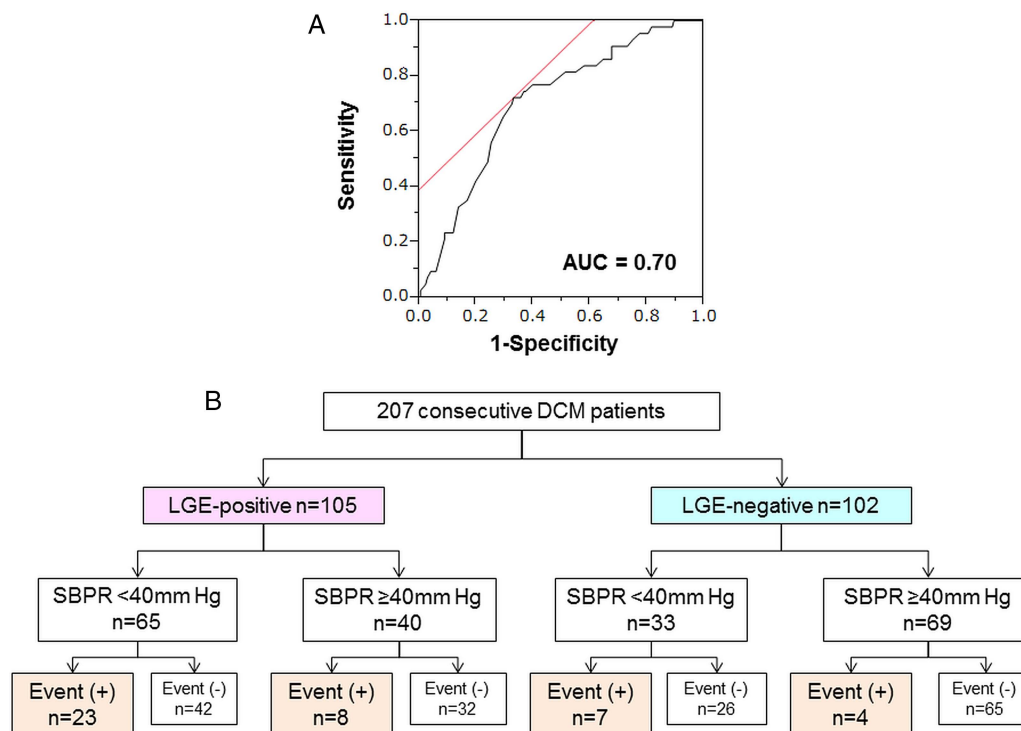
the study patients into four groups according to the presence or absence of LGE and the SBPR cut-off value as follows: LGE-positive+SBPR <40 mm Hg ( $n=65$ ), LGE-positive+SBPR  $\geq 40$  mm Hg ( $n=40$ ), LGE-negative+SBPR <40 mm Hg ( $n=33$ ) and LGE-negative+SBPR  $\geq 40$  mm Hg ( $n=69$ ) (figure 2B). Of the 65 LGE-positive+SBPR <40 mm Hg patients, 23 (35%) experienced a cardiac event, whereas eight (20%) events occurred in the LGE-positive+SBPR  $\geq 40$  mm Hg group ( $n=40$ ). On the other hand, 7 (21%) of the 33 LGE-negative+SBPR <40 mm Hg patients experienced a cardiac event. Only 4 (6%) of the 69 LGE-negative+SBPR  $\geq 40$  mm Hg patients experienced a cardiac event.

### Baseline clinical characteristics and cardiac function

Table 1 shows the baseline clinical characteristics of the four groups. The LGE-negative+SBPR  $\geq 40$  mm Hg group was significantly younger than the other three groups ( $p=0.004$ ). Interestingly, among the LGE-positive patients, those with SBPR <40 mm Hg had higher BNP levels and lower peak  $VO_2$  than those with SBPR  $\geq 40$  mm Hg ( $p < 0.001$ ), even though LV function and volumes were similar. Similarly, within the LGE-negative stratum, the SBPR <40 mm Hg group had higher BNP levels, reduced exercise tolerance, lower LVEF and larger LV volumes compared with the SBPR  $\geq 40$  mm Hg group ( $p < 0.001$ ). Importantly, there were no significant differences in BNP levels, exercise tolerance, and LV function and volumes between the LGE-positive+SBPR  $\geq 40$  mm Hg and LGE-negative+SBPR <40 mm Hg groups.

### Prognostic value of the combination of LGE and SBPR

Of the 207 study patients, 27 (13.0%) developed HF, 7 (3.4%) received appropriate implantable cardioverter-defibrillator



**Figure 2** Receiver operating characteristics (ROC) curve analysis for the development of cardiac events and flow chart of study patients on the basis of LGE and SBPR. (A) ROC curve to determine the optimal cut-off value of SBPR for cardiac events. (B) Flow diagram illustrating the number of participants. DCM, dilated cardiomyopathy; LGE, late gadolinium enhancement; ROC, receiver operator characteristics; SBPR, systolic blood pressure response.

**Table 1** Characteristics of the study patients

	All patients (n=207)	LGE-positive		LGE-negative		p Value
		SBPR <40 mm Hg (n=65)	SBPR ≥40 mm Hg (n=40)	SBPR <40 mm Hg (n=33)	SBPR ≥40 mm Hg (n=69)	
Age (years)	50±16	54±16	52±13	51±16	45±16	0.004
Male	165 (80)	50 (77)	37 (93)	24 (73)	54 (78)	0.096
NYHA functional class						0.009
I	58 (28)	15 (23)	14 (35)	3 (9)	26 (38)	
II	58 (28)	23 (35)	10 (25)	13 (39)	12 (17)	
III	26 (13)	10 (15)	5 (13)	7 (21)	4 (6)	
VI	65 (31)	17 (26)	11 (28)	10 (30)	27 (39)	
Hypertension	76 (37)	23 (35)	16 (40)	6 (18)	31 (45)	0.055
Atrial fibrillation	51 (25)	13 (20)	13 (33)	9 (27)	16 (23)	0.178
History of VT/Vf	8 (4)	6 (9)	0	2 (6)	0	0.006
BNP (mg/dL)	93 (38–213)	170 (72–404)	93 (40–176)	131 (39–252)	50 (13–108)	<0.001
Creatine (mg/dL)	0.85±0.23	0.85±0.23	0.81±0.20	0.91±0.19	0.85±0.25	0.377
ECG parameters						
QRS duration (ms)	117±30	125±37	115±21	119±28	109±25	0.023
QTc interval (ms)	437±53	452±43	430±66	442±59	424±45	0.015
Medications						
β-blocker	196 (95)	65 (100)	37 (93)	31 (94)	63 (91)	0.032
ACE-I/ARB	173 (84)	60 (92)	31 (78)	26 (79)	56 (81)	0.106
Aldosterone antagonist	86 (42)	37 (57)	14 (35)	14 (42)	21 (30)	0.014
Loop diuretics	120 (58)	37 (57)	14 (35)	14 (42)	21 (30)	0.009
Digoxin	41 (20)	15 (23)	6 (15)	10 (30)	10 (14)	0.220
Amiodarone	22 (11)	14 (22)	4 (10)	2 (6)	2 (3)	0.004
Exercise testing						
HR at rest (beats/min)	79±15	77±14	74±15	84±12	80±16	0.029
SBP at rest (mm Hg)	114±18	112±20	111±16	111±18	118±17	0.151
Peak SBP (mm Hg)	157±31	135±22	168±24	135±22	181±24	<0.001
Peak VO <sub>2</sub> (mL/min/kg)	22±6	19±5	23±5	20±5	25±7	<0.001
VE/VCO <sub>2</sub> slope	29±6	31±7	28±5	31±8	26±4	<0.001
CMR parameters						
LVEF (%)	27±11	24±10	25±11	23±10	32±10	<0.001
LVEDVI (mL/m <sup>2</sup> )	143±57	161±64	152±54	153±66	117±34	<0.001
LVESVI (mL/m <sup>2</sup> )	109±56	126±63	117±51	123±66	81±33	<0.001
LV mass (g)	149±49	149±6	162±8	142±9	147±6	0.296
RVEF (%)	36±10	35±10	37±10	35±11	38±10	0.351

Values are means±SD, n (%), or median (first quartile, third quartile).

ACE-I, ACE inhibitor; ARB, angiotensin receptor blocker; BNP, brain natriuretic peptide; CMR, cardiac magnetic resonance; EDVI, end-diastolic volume index; ESVI, end-systolic volume index; HR, heart rate; LGE, late gadolinium enhancement; NYHA, New York Heart Association; peak VO<sub>2</sub>, peak oxygen uptake; SBP, systolic blood pressure; SBPR, systolic blood pressure response; VE/VCO<sub>2</sub> slope, regression slope relating minute ventilation to carbon dioxide output; Vf, ventricular fibrillation; VT, ventricular tachycardia.

discharge for VT or Vf, 3 (1.4%) received a LV assist device and 1 (0.5%) underwent heart transplantation during the follow-up period (table 2). There were four cardiac deaths (1.9%); two patients each died of progressive end-stage HF and sudden

cardiac death. Among the four groups, LGE-positive+SBPR <40 mm Hg status was associated with a higher rate of reaching the all cardiac events end point (p<0.001). Kaplan-Meier analysis showed that the cardiac event-free survival rate was lowest

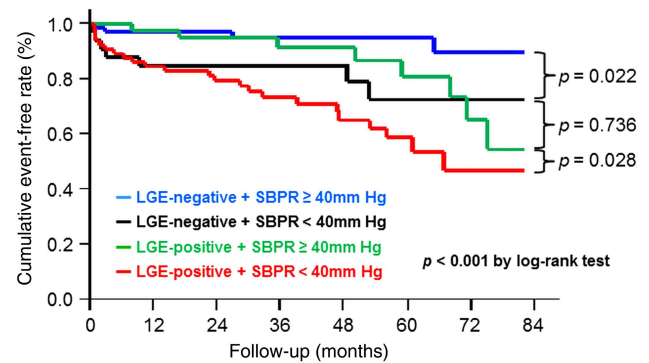
**Table 2** Incidence of cardiac events during follow-up

	All patients (n=207)	LGE-positive		LGE-negative		p Value
		SBPR <40 mm Hg (n=65)	SBPR ≥40 mm Hg (n=40)	SBPR <40 mm Hg (n=33)	SBPR ≥40 mm Hg (n=69)	
All cardiac events	42 (20)	23 (35)	8 (20)	7 (21)	4 (6)	<0.001
Cardiac death	4 (2)	4 (6)	0	0	0	0.024
Cardiac transplantation	1 (0.5)	1 (2)	0	0	0	0.507
LVAD implantation	3 (1)	0	1 (3)	2 (6)	0	0.075
ICD discharge for VT/Vf	7 (3)	3 (5)	2 (5)	2 (6)	0	0.117
Rehospitalisation for HF	27 (13)	15 (23)	5 (13)	3 (9)	4 (6)	0.026

Values are numbers (%).

HF, heart failure; ICD, implantable cardioverter-defibrillator; LVAD, LV assist device; SBPR, systolic blood pressure response; Vf, ventricular fibrillation; VT, ventricular tachycardia.

**Figure 3** Kaplan-Meier curves comparing the probability of all cardiac events. The LGE-positive+SBPR <40 mm Hg group had the worst prognosis. Importantly, the all cardiac event rate in the LGE-negative+SBPR <40 mm Hg group was intermediate, but comparable with the rate in the LGE-positive+SBPR ≥40 mm Hg group ( $p=0.736$ ). LGE, late gadolinium enhancement; SBPR, systolic blood pressure response.



#### No. at risk

Group	0	12	24	36	48	60	72	84
LGE-negative + SBPR ≥ 40mm Hg	69	68	45	21	6			
LGE-negative + SBPR < 40mm Hg	33	29	20	11	2			
LGE-positive + SBPR ≥ 40mm Hg	40	40	28	13	3			
LGE-positive + SBPR < 40mm Hg	65	56	32	14	3			

in the LGE-positive+SBPR <40 mm Hg group and highest in the LGE-negative+SBPR ≥40 mm Hg group ( $p<0.001$  by the log-rank test). Importantly, the all cardiac event rate in the LGE-negative+SBPR <40 mm Hg group was intermediate, but comparable with the rate in the LGE-positive+SBPR ≥40 mm Hg group ( $p=0.736$ ) (figure 3). Online supplementary figure S2 shows the Kaplan-Meier curves comparing the probability of all cardiac events according to the number of risk factors (LGE-positive status and SBPR <40 mm Hg) present when the two intermediate groups were merged.

Univariable analysis showed that a history of VT or Vf, BNP, serum creatine, QRS duration (per 10 ms increments), QTc interval (per 10 ms increments), heart rate and SBP at rest, SBPR <40 mm Hg, LVEF, LV volumes and presence of LGE were all significant predictors for all cardiac events ( $p<0.05$ ) (table 3). When these factors were further analysed in a stepwise multivariable Cox model adjusted for factors that were significant in the univariable analysis as well as established risk factors (age, gender, NYHA functional class, peak  $VO_2$ ,  $VE/VCO_2$ ), a history of VT/Vf, LV end-diastolic volume index, presence of LGE and SBPR <40 mm Hg were significant independent predictors for all cardiac events (table 4, Model 1). When SBPR was considered as a continuous variable, it was still a significant predictor of cardiac risk in the univariable and multivariable analyses (see online supplementary table S2). To further investigate whether the combination of the presence of LGE and a SBPR cut-off value of 40 mm Hg is a better cardiac prognostic factor, we performed an alternative multivariable Cox regression analysis (table 4, Model 2). When this combination was used, LGE-positive+SBPR <40 mm Hg was significantly associated with cardiac events (HR 4.05, 95% CI 1.41 to 14.55,  $p=0.008$ ). Since the number of cardiac events was relatively low in our study population, we demonstrated that the best predictive model adjusted for significant predictors selected in a stepwise Cox regression analysis based on Models 1 and 2. As a result, LGE-positive+SBPR <40 mm Hg (HR 2.08, 95% CI 1.06 to 4.11,  $p=0.034$ ) remained a significant indicator of future cardiac events (table 4, Model 3).

## DISCUSSION

The major finding of this study is that the combination of LGE status and SBPR during exercise is a significant and independent predictor of future cardiac events in patients with DCM. To the best of our knowledge, this is the first clinical study that

demonstrates that a combination of structural (LGE) and simple physiological (SBPR on exercise testing) indices is a relevant prognostic marker of cardiac outcomes compared with either the presence of LGE or SBPR alone.

### The prognostic impact of the combination of LGE and SBPR in patients with DCM

Myocardial fibrosis is associated with worsening ventricular systolic function, progressive remodelling and increased ventricular

**Table 3** Univariable Cox regression analysis of risk factors for all cardiac events

	HR	95% CI	p Value
Age (per 5 years)	1.02	0.92 to 1.12	0.821
Male	1.27	0.60 to 3.10	0.563
NYHA class on admission	1.17	0.91 to 1.52	0.222
Hypertension	0.58	0.28 to 1.12	0.105
Atrial fibrillation	1.42	0.71 to 2.67	0.308
History of VT/Vf	5.16	1.93 to 11.6	0.002
BNP (per 10 mg/dL increments)	1.02	1.01 to 1.02	0.001
Creatine	3.65	1.05 to 11.0	0.042
ECG parameters			
QRS duration (per 10 ms increments)	1.12	1.02 to 1.22	0.022
QTc interval (per 10 ms increments)	1.11	1.04 to 1.18	0.003
Exercise testing			
Heart rate at rest (per 10 bpm increments)	0.81	0.66 to 1.00	0.048
SBP at rest (per 10 mm Hg increments)	0.75	0.62 to 0.90	0.002
SBPR <40 mm Hg	3.31	1.74 to 6.75	<0.001
Peak $VO_2$ (per 1 mL/min/kg decrement)	1.04	0.98 to 1.10	0.134
$VE/VCO_2$ slope	1.01	0.95 to 1.06	0.724
CMR parameters			
LVEF (per 10% decrements)	1.60	1.18 to 2.21	0.002
LVEDVI (per 10 mL/m <sup>2</sup> increments)	1.01	1.06 to 1.14	<0.001
LVESVI (per 10 mL/m <sup>2</sup> increments)	1.11	1.06 to 1.15	<0.001
LV mass	0.99	0.99 to 1.00	0.99
RVEF (per 10% decrements)	1.18	0.89 to 1.56	0.251
Presence of LGE	3.00	1.55 to 6.25	0.001

BNP, brain natriuretic peptide; CMR, cardiac magnetic resonance; EDVI, end-diastolic volume index; ESVI, end-systolic volume index; LGE, late gadolinium enhancement; NYHA, New York Heart Association; peak  $VO_2$ , peak oxygen uptake; SBP, systolic blood pressure; SBPR, systolic blood pressure response;  $VE/VCO_2$  slope, regression slope relating minute ventilation to carbon dioxide output; Vf, ventricular fibrillation; VT, ventricular tachycardia.

**Table 4** Multivariable Cox regression analysis of risk factors for all cardiac events

	Model 1*			Model 2†			Model 3‡		
	HR	95% CI	p Value	HR	95% CI	p Value	HR	95% CI	p Value
History of VT/Vf	3.16	1.26 to 7.89	0.014	2.83	1.03 to 6.67	0.044	2.96	1.06 to 6.98	0.037
QTc interval (per 10 ms increments)	1.01	1.00 to 1.01	0.063	1.04	0.97 to 1.11	0.324	1.04	0.97 to 1.12	0.270
LVEDVI (per 10 mL/m <sup>2</sup> increments)	1.01	1.00 to 1.01	0.001	1.07	1.02 to 1.12	0.004	1.08	1.03 to 1.12	0.012
Presence of LGE	1.96	1.01 to 3.78	0.046						
SBPR <40 mm Hg	1.93	1.02 to 3.65	0.042						
LGE-negative+SBPR <40 mm Hg				2.62	0.77 to 10.19	0.122			
LGE-positive+SBPR ≥40 mm Hg				2.26	0.69 to 8.65	0.179			
LGE-positive+SBPR <40 mm Hg				4.05	1.41 to 14.55	0.008	2.08	1.06 to 4.11	0.034

\*Multivariable Cox model selected by a stepwise method with factors that were significant in the univariable analysis and established risk factors for prognosis (age, gender, NYHA class, peak VO<sub>2</sub>, VE/VCO<sub>2</sub> slope).

†Model with the combination of LGE and SBPR, adjusted for predictors selected by Model 1.

‡Best predictive model, adjusted for significant predictors selected by a stepwise Cox regression analysis based on Models 1 and 2.

EDVI, end-diastolic volume index; LGE, late gadolinium enhancement; NYHA, New York Heart Association; peak VO<sub>2</sub>, peak oxygen uptake; SBPR, systolic blood pressure response; VE/VCO<sub>2</sub> slope, regression slope relating minute ventilation to carbon dioxide output; Vf, ventricular fibrillation; VT, ventricular tachycardia.

stiffness in patients with DCM.<sup>18</sup> Recently, Gulati *et al*<sup>19</sup> suggested that mid-wall LGE was independently associated with cardiovascular mortality and cardiac transplantation in the largest cohort of patients with DCM to date. Although many previous studies have suggested the prognostic value of LGE in patients with DCM, Schalla *et al*<sup>20</sup> reported that the presence of fibrosis detected by LGE was not correlated with the amount of interstitial fibrosis detected on endomyocardial biopsy. Therefore, LGE status alone may be an insufficient prognostic indicator in patients with DCM.

To avoid missing patients at high risk for cardiac events who cannot be identified with LGE alone, we added SBPR during exercise testing to create a simple, convenient index for predicting outcomes in patients with DCM. SBP on exercise has been established as an important prognostic marker of cardiac events.<sup>21</sup> Kitaoka *et al*<sup>13</sup> reported that postexercise BPR was a simple and useful predictor of adverse cardiac events in patients with DCM. Since SBPR reflects the ability of the heart to increase stroke volume in response to exercise,<sup>11–14 22</sup> that is, systolic and diastolic performance reserve during exercise, patients with SBPR <40 mm Hg may have underlying myocardial functional impairment that is not detected by morphological assessment such as LGE with CMR. In the present study, SBPR of 40 mm Hg was identified as the best cut-off value for predicting prognosis based on ROC curve analysis (figure 2A). Therefore, we divided the study patients into four groups according to the presence or absence of LGE and the SBPR cut-off. Indeed, the incidence of cardiac events was highest in the LGE-positive+SBPR <40 mm Hg group and lowest in the LGE-negative+SBPR ≥40 mm Hg group. Importantly, the event rate in the LGE-positive+SBPR ≥40 mm Hg and LGE-negative+SBPR <40 mm Hg groups were intermediate (figure 3). Based on the different rates for cardiac events in the four groups, our study demonstrated that the combination of LGE and SBPR provides more detailed risk stratification in patients with DCM than LGE or SBPR alone.

Regarding the combination of CMR and exercise testing for predicting prognosis in patients with DCM, Yamada *et al*<sup>23</sup> reported that LGE-CMR combined with peak VO<sub>2</sub>-CPX can provide additional prognostic information on cardiac events. However, compared with our study, their study population had clinically mild DCM (prevalence of NYHA functional class I and II; 93% vs 56%). Furthermore, on multivariable analysis, peak VO<sub>2</sub> was not an independent predictor of cardiac events in

our study. Therefore, since our study population included patients with clinically moderate to severe DCM and there were more cardiac events, our present study provides more comprehensive information for assessing the risk of cardiac events in a broader spectrum of patients with DCM.

Recently, several studies have proposed that the measurement of T1 relaxation time, called T1 mapping, is potentially valuable for quantitative assessment of myocardial tissue composition on a global or regional level<sup>24 25</sup> and that it is a promising technique for directly quantifying diffuse interstitial fibrosis in chronic HF.<sup>26</sup> Furthermore, Dass *et al*<sup>27</sup> suggested that since T1 values determined by T1 mapping are strongly correlated with impaired myocardial energetics, T1 mapping may detect functional changes in the myocardium prior to the development of fibrosis as evaluated by LGE. However, the relationship between T1 mapping and future cardiac events has not been fully elucidated. In addition, associations between myocardial T1 values and known prognostic physiological parameters in patients with DCM remain insufficiently characterised. Therefore, further investigations with larger samples are required to address this important issue.

### Study limitations

Several limitations should be mentioned for the present study. First, since this was an observational study, we could not avoid differences in background characteristics among the four groups. Second, this study was limited by the relatively small number of patients examined and the small number of patients who experienced the primary end point during the study. A higher number of events is needed to provide adequate statistical power to fully evaluate whether a novel risk marker contributes additional prognostic information to an established set of risk factors in a multivariable model. Third, although lower glomerular filtration rate has been reported to be a prognostic factor in patients with chronic HF,<sup>28</sup> patients with chronic renal insufficiency were excluded due to the risk of nephrogenic systemic fibrosis associated with gadolinium. Finally, the results from the stepwise selection process are potentially biased as a result of overfitting the derivation data set.

### CONCLUSION

This study highlights the utility of the combination of LGE and SBPR during exercise for risk stratification in patients with DCM, and it cautions against overconfidence in risk stratification based on LGE assessment alone.

## Key messages

**What is already known on this subject?**

Late gadolinium enhancement (LGE) has been established as a prognostic indicator in non-ischaemic cardiomyopathy. However, it is limited in its ability to detect diffuse interstitial fibrosis, which is commonly found in idiopathic dilated cardiomyopathy (DCM).

**What might this study add?**

To avoid missing patients at high risk for cardiac events by assessing LGE-positive status alone, we added systolic blood pressure response (SBPR) during exercise testing to a simple, convenient index for predicting outcomes in patients with DCM.

**How might this impact on clinical practice?**

The cardiac event rate in the LGE-negative+SBPR <40 mm Hg group was comparable with the rate in the LGE-positive+SBPR ≥40 mm Hg group. This finding cautions against overconfidence in risk stratification based on LGE-positive status alone. This combination of physiological (SBPR) and structural (LGE) indices can be used for risk stratification of cardiac events in patients with DCM.

**Author affiliations**

<sup>1</sup>Department of Cardiovascular Medicine, National Cerebral and Cardiovascular Center, Suita, Osaka, Japan

<sup>2</sup>Department of Advanced Cardiovascular Medicine, Graduate School of Medical Sciences, Kumamoto University, Kumamoto, Japan

<sup>3</sup>Department of Radiology, National Cerebral and Cardiovascular Center, Suita, Osaka, Japan

<sup>4</sup>Department of Pathology, National Cerebral and Cardiovascular Center, Suita, Osaka, Japan

<sup>5</sup>Department of Preventive Cardiology, National Cerebral and Cardiovascular Center, Suita, Osaka, Japan

<sup>6</sup>Department of Cardiovascular Medicine, Graduate School of Medical Sciences, Kumamoto University, Kumamoto, Japan

**Contributors** ET and TN contributed to the conception and design of the study and wrote this manuscript. YM and NY contributed to analysis of the MRIs. HI-U contributed to histological analysis and its interpretation. KN and YM provided statistical advice. YG and SY critically reviewed and revised the manuscript for intellectual content. TA and HO reviewed the manuscript.

**Funding** The present work was supported in part by the Takeda Science Foundation and the Japan Cardiovascular Research Foundation.

**Competing interests** None.

**Patient consent** Obtained.

**Ethics approval** The institutional review board and the ethics committees of the National Cerebral and Cardiovascular Center.

**Provenance and peer review** Not commissioned; externally peer reviewed.

**Open Access** This is an Open Access article distributed in accordance with the Creative Commons Attribution Non Commercial (CC BY-NC 4.0) license, which permits others to distribute, remix, adapt, build upon this work non-commercially, and license their derivative works on different terms, provided the original work is properly cited and the use is non-commercial. See: <http://creativecommons.org/licenses/by-nc/4.0/>

**REFERENCES**

- 1 McCrohon JA, Moon JC, Prasad SK, *et al.* Differentiation of heart failure related to dilated cardiomyopathy and coronary artery disease using gadolinium-enhanced cardiovascular magnetic resonance. *Circulation* 2003;108:54–9.
- 2 Karamitsos TD, Francis JM, Myerson S, *et al.* The role of cardiovascular magnetic resonance imaging in heart failure. *J Am Coll Cardiol* 2009;54:1407–24.

- 3 Kim RJ, Wu E, Rafael A, *et al.* The use of contrast-enhanced magnetic resonance imaging to identify reversible myocardial dysfunction. *N Engl J Med* 2000;343:1445–53.
- 4 Kwong RY, Chan AK, Brown KA, *et al.* Impact of unrecognized myocardial scar detected by cardiac magnetic resonance imaging on event-free survival in patients presenting with signs or symptoms of coronary artery disease. *Circulation* 2006;113:2733–43.
- 5 Assomull RG, Prasad SK, Lyne J, *et al.* Cardiovascular magnetic resonance, fibrosis, and prognosis in dilated cardiomyopathy. *J Am Coll Cardiol* 2006;48:1977–85.
- 6 Wu KC, Weiss RG, Thiemann DR, *et al.* Late gadolinium enhancement by cardiovascular magnetic resonance heralds an adverse prognosis in nonischemic cardiomyopathy. *J Am Coll Cardiol* 2008;51:2414–21.
- 7 Lehrke S, Lossnitzer D, Schob M, *et al.* Use of cardiovascular magnetic resonance for risk stratification in chronic heart failure: prognostic value of late gadolinium enhancement in patients with non-ischaemic dilated cardiomyopathy. *Heart* 2011;97:727–32.
- 8 de Leeuw N, Ruiter DJ, Balk AH, *et al.* Histopathologic findings in explanted heart tissue from patients with end-stage idiopathic dilated cardiomyopathy. *Transpl Int* 2001;14:299–306.
- 9 Chua TP, Ponikowski P, Harrington D, *et al.* Clinical correlates and prognostic significance of the ventilatory response to exercise in chronic heart failure. *J Am Coll Cardiol* 1997;29:1585–90.
- 10 Mancini DM, Eisen H, Kussmaul W, *et al.* Value of peak exercise oxygen consumption for optimal timing of cardiac transplantation in ambulatory patients with heart failure. *Circulation* 1991;83:778–86.
- 11 Williams SG, Jackson M, Ng LL, *et al.* Exercise duration and peak systolic blood pressure are predictive of mortality in ambulatory patients with mild-moderate chronic heart failure. *Cardiology* 2005;104:221–6.
- 12 Kallistratos MS, Poulimenos LE, Pavlidis AN, *et al.* Prognostic significance of blood pressure response to exercise in patients with systolic heart failure. *Heart Vessels* 2012;27:46–52.
- 13 Kitaoka H, Hitomi N, Okawa M, *et al.* Prognostic significance of post-exercise blood pressure response in patients with dilated cardiomyopathy. *J Cardiol* 2003;42:165–71.
- 14 Raphael CE, Whinnett ZI, Davies JE, *et al.* Quantifying the paradoxical effect of higher systolic blood pressure on mortality in chronic heart failure. *Heart* 2009;95:56–62.
- 15 Richardson P, McKenna W, Bristow M, *et al.* Report of the 1995 World Health Organization/International Society and Federation of Cardiology Task Force on the Definition and Classification of cardiomyopathies. *Circulation* 1996;93:841–2.
- 16 Ise T, Hasegawa T, Morita Y, *et al.* Extensive late gadolinium enhancement on cardiovascular magnetic resonance predicts adverse outcomes and lack of improvement in LV function after steroid therapy in cardiac sarcoidosis. *Heart* 2014;100:1165–72.
- 17 Yoshida A, Ishibashi-Ueda H, Yamada N, *et al.* Direct comparison of the diagnostic capability of cardiac magnetic resonance and endomyocardial biopsy in patients with heart failure. *Eur J Heart Fail* 2013;15:166–75.
- 18 Beltrami CA, Finato N, Rocco M, *et al.* The cellular basis of dilated cardiomyopathy in humans. *J Mol Cell Cardiol* 1995;27:291–305.
- 19 Gulati A, Jabbour A, Ismail TF, *et al.* Association of fibrosis with mortality and sudden cardiac death in patients with nonischemic dilated cardiomyopathy. *JAMA* 2013;309:896–908.
- 20 Schalla S, Bekkers SC, Dennert R, *et al.* Replacement and reactive myocardial fibrosis in idiopathic dilated cardiomyopathy: comparison of magnetic resonance imaging with right ventricular biopsy. *Eur J Heart Fail* 2010;12:227–31.
- 21 Fagard R, Pardaens K, Vanhaecke J. Prognostic significance of exercise versus resting blood pressure in patients with chronic heart failure. *J Hypertens* 1999;17:1977–81.
- 22 Cotter G, Williams SG, Vered Z, *et al.* Role of cardiac power in heart failure. *Curr Opin Cardiol* 2003;18:215–22.
- 23 Yamada T, Hirashiki A, Okumura T, *et al.* Prognostic impact of combined late gadolinium enhancement on cardiovascular magnetic resonance and peak oxygen consumption in ambulatory patients with nonischemic dilated cardiomyopathy. *J Card Fail* 2014;20:825–32.
- 24 Messroghli DR, Radjenovic A, Kozerke S, *et al.* Modified Look-Locker inversion recovery (MOLLI) for high-resolution T1 mapping of the heart. *Magn Reson Med* 2004;52:141–6.
- 25 Newton N, Liu CY, Croisille P, *et al.* Assessment of myocardial fibrosis with cardiovascular magnetic resonance. *J Am Coll Cardiol* 2011;57:891–903.
- 26 Iles L, Pflugler H, Phrommintikul A, *et al.* Evaluation of diffuse myocardial fibrosis in heart failure with cardiac magnetic resonance contrast-enhanced T1 mapping. *J Am Coll Cardiol* 2008;52:1574–80.
- 27 Dass S, Suttie JJ, Piechnik SK, *et al.* Myocardial tissue characterization using magnetic resonance noncontrast T1 mapping in hypertrophic and dilated cardiomyopathy. *Circ Cardiovasc Imaging* 2012;5:726–33.
- 28 Hillege HL, Nitsch D, Pfeiffer MA, *et al.* Renal function as a predictor of outcome in a broad spectrum of patients with heart failure. *Circulation* 2006;113:671–8.