

## Review Article

# Peripheral Signals Mediate the Beneficial Effects of Gastric Surgery in Obesity

**Silvia Barja-Fernández,<sup>1,2,3</sup> Cintia Folgueira,<sup>1,3,4</sup> Cecilia Castela,<sup>1,3</sup> Rosaura Leis,<sup>2</sup> Felipe F. Casanueva,<sup>3,5</sup> and Luisa M. Seoane<sup>1,3</sup>**

<sup>1</sup>Grupo Fisiopatología Endocrina, Instituto de Investigación Sanitaria de Santiago de Compostela (IDIS), Complejo Hospitalario Universitario de Santiago (CHUS/SERGAS), Travesía Choupana s/n, 15706 Santiago de Compostela, Spain

<sup>2</sup>Departamento de Pediatría, Universidad de Santiago de Compostela (USC), Instituto de Investigación Sanitaria de Santiago de Compostela, Complejo Hospitalario Universitario de Santiago (CHUS/SERGAS), Travesía Choupana s/n, 15706 Santiago de Compostela, Spain

<sup>3</sup>CIBER Fisiopatología de la Obesidad y Nutrición, Instituto de Salud Carlos III, Spain

<sup>4</sup>Departamento de Fisiología, Centro de Investigación en Medicina Molecular y Enfermedades Crónicas (CIMUS), Avenida Barcelona s/n, 15782 Santiago de Compostela, Spain

<sup>5</sup>Laboratorio de Endocrinología Molecular y Celular, Universidad de Santiago de Compostela (USC), Instituto de Investigación Sanitaria de Santiago de Compostela (IDIS), Travesía Choupana s/n, 15706 Santiago de Compostela, Spain

Correspondence should be addressed to Luisa M. Seoane; [luisamaria.seoane@usc.es](mailto:luisamaria.seoane@usc.es)

Received 24 November 2014; Accepted 21 March 2015

Academic Editor: Takuji Tanaka

Copyright © 2015 Silvia Barja-Fernández et al. This is an open access article distributed under the Creative Commons Attribution License, which permits unrestricted use, distribution, and reproduction in any medium, provided the original work is properly cited.

Obesity is nowadays a public health problem both in the industrialized world and developing countries. The different treatments to fight against obesity are not very successful with the exception of gastric surgery. The mechanism behind the achievement of this procedure remains unclear although the modifications in the pattern of gastrointestinal hormones production appear to be responsible for the beneficial effect. The gastrointestinal tract has emerged in the last time as an endocrine organ in charge of response to the different stimulus related to nutritional status by the modulation of more than 30 signals acting at central level to modulate food intake and body weight. The production of some of these gastric derived signals has been proved to be altered in obesity (ghrelin, CCK, and GLP-1). In fact, bariatric surgery modifies the production of both gastrointestinal and adipose tissue peripheral signals beyond the gut microbiota composition. Through this paper the main peripheral signals altered in obesity will be reviewed together with their modifications after bariatric surgery.

## 1. Introduction

Overweight and obesity are serious public health problems in the developed and developing world. It has been estimated that at least 3.4 million people die each year as a result of both disorders [1]. In fact, obesity is considered as an epidemic of the 21st century by the World Health Organization (WHO) due to continued increase over the past decades in the prevalence of this disorder. In the European Union, obesity affects 10–30% of adults [2] whereas in the USA between 30 and 35% of the general population are obese [3]. Child and youth obesity are particular concern since the National Institutes of Health has reported that more than 40 million children

under the age of 5 years were overweight or obese in 2012 [4]. Children with overweight typically progress to become obese adolescents and adults [5]. According to WHO, more than 700 million adults and children will be obese in 2015 [6].

Obesity is defined as abnormal and excessive fat accumulation caused by an imbalance between energy intake and caloric expenditure. This disorder results from the increase of high caloric food intake and reducing physical activity. Moreover, in developing countries malnutrition and nutrient deficiencies coexist with an industrialized profile of lifestyle, characterized by the high energy food ingestion and low physical activity [7, 8].

Both overweight and obesity are associated with a very high prevalence of comorbidities, emphasizing metabolic syndrome, hypertension, type 2 diabetes (TD2), dyslipidemia, coronary heart disease, and certain cancers (colon, endometrial, prostate, and breast). Moreover, obesity is also associated with sleep apnea [9], psychological disorders, and pregnancy complications [10]. It was estimated that 1 kg of weight gain increases the diabetes risk by 4.5–9% and cardiovascular risk by 3.1% [11].

## 2. Energy Balance Regulation

Over millions of years human ancestors lived under selective pressure characterized by hostile environment and intense physical activity. It was postulated that to ensure survival under these situations it was necessary to develop a thirty genotype which enable individuals to efficiently select genes responsible for storage fat reserves during periods of food abundance to be used as a source of energy during periods of food shortage [12]. The body weight and appetite control is a complex and interactive mechanism regulated by nervous, hormonal, and metabolic pathways.

**2.1. Central Regulation of Energy Balance.** The regulation of food intake and energy expenditure at the central nervous system (CNS) involves the action of neurotransmitters and neuromodulators. The hypothalamus, specially the hypothalamic arcuate nucleus (ARC), is the central brain structure responsible for food intake regulation. At this level, neurons coexist expressing anorexigenic peptides such as proopiomelanocortin (POMC) and cocaine and amphetamine-regulated transcript (CART), with an adjacent set of neurons coexpressing orexigenic peptides such as agouti-related peptides (AgRP) and neuropeptide Y (NPY) [13]. Hypothalamic neurons respond to peripheral signals (as leptin, ghrelin, glucose, and insulin) and the main neurotransmitters by modifying the orexigenic/anorexigenic neuropeptides production to finally regulate food intake. In addition, recent researches in central regulation of energy homeostasis field have reported that hypothalamic lipid metabolism is a key mechanism regulating energy homeostasis [13]. In fact, the peripheral signals involved in energy balance regulation (leptin, ghrelin, and cannabinoids) modulate the main lipid metabolism enzymes such as MAP-activated protein kinase (AMPK) and acetyl-CoA carboxylase (ACC) [14].

It has been proposed that the endocannabinoid (EC) system is another central target for energy balance regulation. It has been reported that cannabinoid receptor type 1 (CB1) agonism ensures palatable food consumption, while the antagonism for CB1 induces weight loss in obesity status possibly improving leptin sensitivity at central level [15].

**2.2. Peripheral Regulation of Energy Balance.** In the last time, the classical idea of an only central regulation of energy balance has changed to a novel point of view that considers the regulation of energy balance as the result of a complex interaction between brain and peripheral organs. In this sense, the stomach-brain communication, regulated under neural and

hormonal control, allows stomach to play a role in the homeostatic mechanism participating in body weight maintenance. The neural stomach-brain mechanism, associated with central functions such as appetite and reward [16], is exerted by the autonomic nervous system (ANS) innervating the stomach with a leading role of the vagus nerve [17]. The afferent fibers of the vagus reach the dorsal brainstem and from here to different brain centers, as the hypothalamus, to modulate both orexigenic and anorexigenic signals in charge of regulating energy balance [16]. In addition, the enteric nervous system comprises a set of neurons localized in gastric myenteric and submucous plexus required for different gastrointestinal functions as secretion [18] but also primarily involved in responding to nutrient signalling [19].

**2.2.1. Gastrointestinal Tract Derived Signals Involved in Food Intake Regulation.** The gastrointestinal tract is the largest endocrine organ in the body and gastrointestinal-derived signals are crucial for energy balance regulation. It has described that there exist more than thirty peptides secreted from enteroendocrine cells of the gastrointestinal tract in response to food intake. These peptides participate in hunger/satiety perception by interacting with hormones involved in body weight regulation to maintain energy homeostasis [20]. The majority of satiation-inducing peptides mediate their effects in CNS via vagal afferent fibers, although some exert their effects directly reaching the hypothalamus from the circulation [21].

**The EC System.** The EC System is not only present at central level. The major peripheral organs involved in metabolism regulation are targets for cannabinoid actions. In fact, the EC system participates in lipogenesis, glucose homeostasis, and insulin sensitivity [22]. Recently, it was showed that CB1 receptors are expressed in the stomach, in the same neuroendocrine cells producing ghrelin [23].

**Ghrelin.** Ghrelin, an endogenous ligand for the growth hormone secretagogue (GHS) receptor, is expressed mainly in the neuroendocrine cells from the gastric fundus [24, 25]. Ghrelin isolation from the stomach highlighted the emerging role of the stomach as an endocrine organ. In addition, it is also expressed in the entire gastrointestinal tract and other tissues such as hypothalamus, pituitary, testis, ovary, placenta, and heart [26]. The fact that ghrelin-circulating concentrations decreased by 65% after gastrectomy, both in humans and rodents, suggests that the stomach is the main source of this hormone in the organism [27]. The primary function of ghrelin is to regulate appetite acting as an orexigenic signal, being the first gastric derived peptide with appetite stimulating properties [24, 28, 29]. Additional ghrelin effects include gastric acid secretion and gastric motility [30]. Ghrelin constitutes a crucial link between the stomach and brain to regulate energy homeostasis by acting at the NPY/AgRP pathway in the hypothalamus [21, 28]. Nutritional status regulates ghrelin production from the stomach and circulating levels. Elevated plasma levels in fasting condition were described as a consequence of an increase in ghrelin secretion from the stomach as demonstrated by the use of a novel gastric tissue

explants model [31]. In addition, it has been reported that the exposure to sensory stimuli related with the food (without true feeding) modifies gastric ghrelin secretion and its plasma levels in the same way as real intake [31]. Therefore, relevant factors involved in this process are the CNS sensorial stimuli and they emphasize the relevance of brain-stomach connection in energy balance regulation.

Ghrelin-circulating levels in obesity are low and are negatively correlated with body mass index (BMI), percent body fat, and leptin levels [32]. It is thought that this correlation is due to a physiological adaptation to long-term positive energy balance [33].

*Cholecystokinin (CCK).* CCK is released into circulation from type I endocrine cells present in the duodenum and jejunum mucosa immediately after nutrients intake, and especially to lipids and proteins ingestion. CCK acts as an anorexigenic hormone as showed by its food intake inhibitory effects [34]. Once released in response to food intake, it exerts the anorexigenic effect through the activation of the CCK1 receptor in the afferent vagal nerves on the gastrointestinal tract [35]. Moreover, CCK interacts with other metabolic signals such as leptin, ghrelin, and peptide YY in order to regulate energy balance [36].

In obese individuals a dysfunction in both basal and stimulated by fatty meal CCK plasma levels has been reported [37].

*Glucagon-Like Peptide 1 (GLP1).* GLP1 is an anorexigenic hormone encoded by preproglucagon gene whose post-translational processing generates different peptides products (GLP-1, GLP-2, glucagon, glicentin, and oxyntomodulin) depending on the site expression. GLP-1 is mainly synthesized and secreted by enteroendocrine L cell located in the duodenum and small and large intestine. It is also present in the pancreas and hypothalamus [38, 39]. GLP-1 secretion in the gastrointestinal tract is regulated by glucose and fatty acid levels after food intake and vagus nerve stimulation [40, 41]. This gut hormone is considered an incretin since several experimental studies, both in animal and human models, have showed that the main GLP-1 action is reducing circulating glucose by stimulating insulin production and secretion from pancreatic  $\beta$ -cells and inhibiting glucagon secretion [42, 43]. This glucose-lowering agent activates its own GLP-1 receptor also in the CNS producing central effects as decelerating the rate of gastric emptying and gut motility, suppressing appetite, and reducing body weight [42, 44, 45]. Several rodent studies have showed that GLP-1 or analogs of GLP-1 administration produce a dose-dependent inhibition of food intake attributed to decrease both in meal size and in frequency [46–50]. In humans, the clinical data has showed that this peptide reduces appetite, hunger, and food consumption and promotes satiety [51–55].

With the fact that GLP-1 acts as an inhibitor of food intake, one would expect a decrease in circulating GLP-1 levels in obesity status. However, conflicting results were reported. Initially a hypersecretion was found [56], but in other studies normal [57] or reduced GLP-1 plasma levels were described in obese subjects [58–61]. Moreover, GLP-1

secretory responses were decreased in diabetic subjects [62, 63]. In addition, in obese diabetic patients GLP-1 levels were negatively correlated with BMI [64].

*Nesfatin-1.* Nesfatin-1 is a peptide derived from the precursor nucleobinding protein 2 (NUCB2), identified in 2006 [65] as a satiety factor. At central level, NUCB2 is coexpressed with appetite-regulatory peptides (such as NPY and CART) in hypothalamic nucleus which are involved in food intake control [66]. At peripheral level, nesfatin-1 expression was reported in stomach, pancreas, heart, testis, and adipose tissue [67]. In the stomach, nesfatin-1 expression was showed in the same cells producing ghrelin [68]. Nesfatin-1 is a novel anorexigenic modulator of food intake and body weight by its actions in reducing food intake, weight gain, and fat depots [65, 67]. With respect to nesfatin-1 production, a regulatory role for nesfatin-1 on gastric motor activity as the mediator of its anorexigenic actions has been suggested [65, 66, 69]. The fact that in the stomach nesfatin-1 expression takes place in the same cells producing ghrelin at a tenfold higher level than in the brain and that the vagus nerve is implicated in nesfatin-1 anorexigenic effect suggests that, as with ghrelin, the main source in the organism for nesfatin-1 is the stomach. Moreover, taking into account the opposite effects of both peptides on food intake, adiposity, and body weight, the possibility of an interaction between nesfatin-1 and ghrelin to regulate energy homeostasis should be considered.

Different studies have showed that both gastric expression of NUCB2/nesfatin-1 and circulating levels are increased in obese subject with respect to lean individuals levels [67, 70, 71]. Moreover, plasma nesfatin-1 concentration was positively correlated with BMI [70, 71].

*Gastrin.* Gastrin is a gastrointestinal peptide produced and released mainly by the G-cells in the antral and duodenal mucosa, although its expression was also described in the pancreas. The main biological effects of this hormone are stimulation of acid secretion from gastric parietal cells and stimulation of mucosal growth in the acid-secreting part of the stomach [37, 72]. Moreover, it has been postulated that gastrin presents an insulinotropic effect [73].

It has been reported that EC system in the digestive tract mediates gastric acid secretion among other actions such as gastric emptying and contractility [74, 75]. The cannabinoid agonists inhibit pentagastrin-evoked acid secretion. It has been showed in rat's studies that the mechanism underlying the antisecretory effect of EC is mediated by CB1 receptors in an agonist's dose-dependent manner [74, 75]. In addition, this antisecretory effect is only effective when the CB-1 receptor agonists are administrated peripherally [76].

### 2.2.2. Main Adipokines Involved in Energy Balance Regulation.

Recently, an increasing number of adipose tissue derived signals named adipokines have shown to regulate energy balance by communicating to the brain the organism energy status. In the past, adipose tissue was only considered as a lipid reservoir of the whole body. Nevertheless, this classical vision was banished when leptin was isolated in 1999. This

event supposes an important starting point in the study of the adipose tissue as an endocrine organ.

*Leptin.* Leptin is a protein hormone produced and secreted mainly by white adipose tissue (WAT) and plays an important role in the regulation of food intake (satiety and appetite) and energy expenditure [77]. Their circulating levels correlate positively with the fat mass. Leptin key function is regulating appetite acting through the leptin receptors in the arcuate nucleus of the hypothalamus. The mechanism of leptin action involves the inhibition of orexigenic neuropeptides in parallel with increase in anorexigenic peptides, decreasing hunger [78].

In obese subjects, leptin-circulating levels are increased and do not reduce the food intake [77]. In addition, exogenous leptin administration in these patients does not influence neither appetite nor body weight due to central leptin resistance existence.

*Adiponectin.* Adiponectin is synthesized and secreted mainly by adipocytes into circulation. At central level, adiponectin acts in the brain to produce an increase in energy expenditure and weight loss [79]. One of the key roles of adiponectin is acting as an endogenous insulin sensitizer [80] but also it exerts anti-inflammatory and antiapoptotic actions on different cell types [79].

Adiponectin levels are downregulated under adverse metabolic conditions, as adverse fat distribution and adipose tissue dysfunction typical of obesity status, resulting in decreased adiponectin plasma levels [79]. Accordingly, adiponectin-circulating levels correlated inversely with body weight and especially with visceral fat mass [81].

Besides being considered a gastrokine, *Nesfatin-1* is also categorized as an adipokine due to being synthesized in adipose tissue [82].

**2.2.3. Gut Microbiota Role in Energy Balance Regulation.** A novel key “organ” proposed to be involved in energy homeostasis is the gut microbiota. This is an environmental factor evolving with organism from birth and dietary habits. Besides participating in different intestinal functions (as defense against pathogens and immunity among others), several studies have reported that gut microbiota is involved in the fat mass development and altered energy homeostasis, regulating fat storage [83, 84]. In pathological conditions such as obesity and TD2 the microbiota is able to control the host metabolism and participate in development of low-grade inflammation [85–87].

Obesity pathology is associated with changes in the gut microbiota composition and diversity, which gut permeability alters. Several researches have showed important changes in two gut microbiota-dominant phyla: Firmicutes and Bacteroidetes. In obesity animal models an increase in Firmicutes and decrease in Bacteroidetes were reported [88–91]. In humans, the obesity pathology is also associated with changes in principal bacterial phyla abundance. Generally, the Firmicutes/Bacteroidetes ratio is increased in obese subjects [92, 93].

Recently, a new pathophysiological mechanism linking to gut microbiota, EC system, and adipogenesis has been reported. Gut microbiota alterations activate the gut EC system increasing gut permeability, which produce endotoxemia, exacerbate gut barrier disruption, and activate peripheral EC system, in both intestine and adipose tissue. Under obesity pathological conditions, the endotoxemia and EC system activation dysregulate adipogenesis [94].

### 3. Obesity Treatments

The scientific concern about current alarming obesity rates, in industrialized as in developing countries, has showed that the studies have been focused on understanding the main physiologies mechanisms controlling energy homeostasis to develop efficacy obesity treatments. Currently, there are three strategies for treatment of obesity: lifestyle interventions, pharmacotherapy, and bariatric surgery [95]; the main goal of these strategies is weight loss. Lifestyle modifications in the patterns of diet and increase in daily exercise can be useful in obesity prevention; however in most cases these procedures only achieve short weight loss [96, 97]. Pharmacological interventions have shown limited success and currently antiobesity drugs options are limited. However, new drugs acting through the CNS pathways and/or peripheral adipose tissue and gastrointestinal tract signals are under research and clinical development [82, 98–104]. In fact, FDA has just approved two novel drugs in September 2014 [105].

The third obesity treatment tier is bariatric surgery. Surgical candidates are patients with BMI  $\geq 40$  kg/m<sup>2</sup> or with a BMI  $\geq 35$  kg/m<sup>2</sup> who have associated high-risk comorbid conditions (cardiopulmonary disease or TD2) [106]. The clinical benefits of bariatric surgery in achieving weight loss and improving metabolic comorbidities have largely been attributed to changes in the physiological responses of gastrointestinal hormones and adipose tissue metabolism [107, 108]. Moreover, the role of bariatric surgery in the prevention and treatment of TD2 has garnered attention, since it has been demonstrated that it markedly reduced the incidence of TD2 developing by 78% [109, 110]. At present, the most effective obesity treatment, in terms of weight loss, comorbidity reduction, and enhanced survival, is bariatric surgery [21, 111]. However, owing to concerns about perioperative mortality, surgical complications, and the frequent need for reoperation, this procedure tends to be reserved for the morbidly obese [112].

**3.1. Bariatric Surgery.** Weight loss surgery is divided into the following three types: restrictive, metabolic, and restrictive/metabolic. The first one includes the adjustable gastric band (AGB), which encircles the stomach cardia with an inflatable silicone ring, and the sleeve gastrectomy (SG), which removes most of the stomach greater curvature. Both procedures limit the patient rate of food intake. Metabolic procedures include duodenal-jejunal bypass (DJB) and biliary-pancreatic diversion (BPD). DJB procedure consists in duodenum separation from the stomach outlet connecting a jejunal branch in its place. In this situation, nutrients bypass

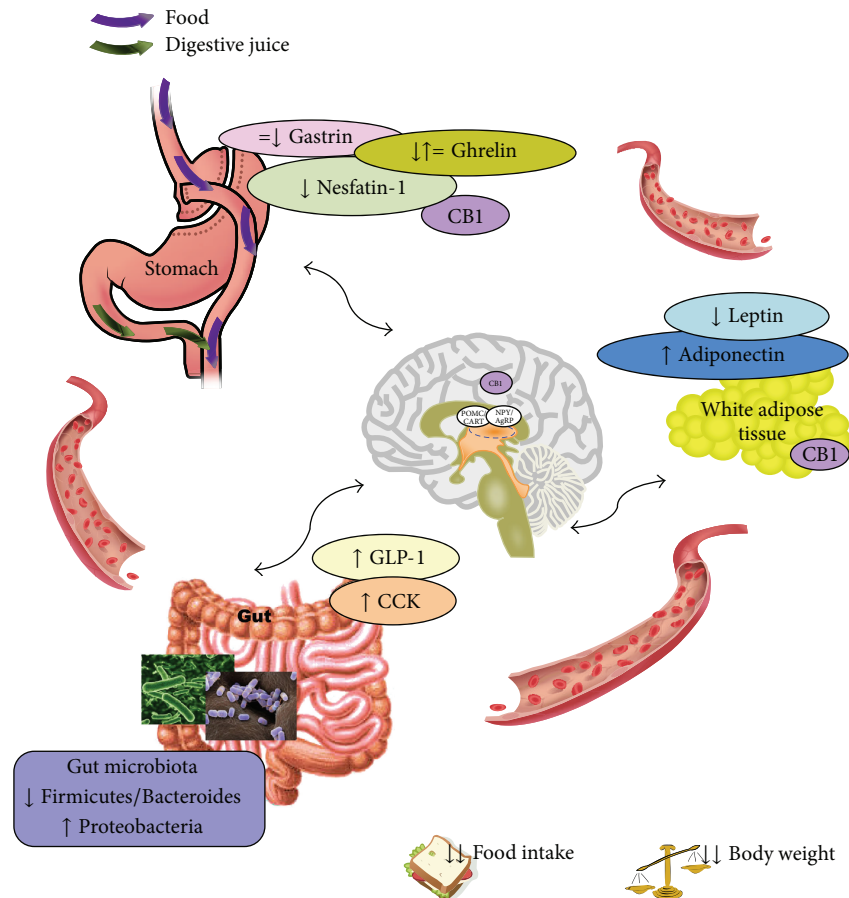


FIGURE 1: The figure represents the major organs involved in the modulation of peripheral signals (ghrelin, nesfatin-1, gastrin, leptin, adiponectin, GLP-1, CCK, and gut microbiota) after Roux-en-Y gastric bypass (RYGB) surgery. The increase/decrease in the signals is designed by arrows. CB1: cannabinoid receptor type 1; CCK: cholecystokinin; GLP-1: glucagon-like peptide 1.

the duodenum, which is exposed to undiluted bile, and nutrients and bile mixture taking place in the jejunum. BPD method involved a much longer intestinal bypass than DJB, in which the alimentary limb is anastomosed to the ileum. The roux-en-Y gastric bypass (RYGB) is considered as both restrictive and metabolic weight loss surgery. In this intervention the stomach is separated into a small upper pouch which is anastomosed to a roux jejunal limb. The remnant stomach remains attached to the biliary limb, into which the bile drains. In this way foods have earlier contact with the mid and distal small bowel.

Each weight loss surgery has its pros and cons. BPD can lead to severe nutrient deficiencies, making the SG or RYGB be the procedure selected [113, 114]. It has been reported that RYGB induces greater weight loss and resolution of diabetes than other procedures. For example, RYGB surgery has greater efficacy for weight loss in obese individuals than AGB (25% weight loss versus 14%) [115]. This indicates that the specific gut anatomical manipulations may produce different physiological effects [116].

#### 4. Changes after Bariatric Surgery

At present, bariatric surgery is the most effective strategy to treat obesity due to the clinical benefits in weight

loss achieved and improving metabolic comorbidities [95]. Between the different procedures for bariatric surgery, the RYGB is currently the key effective bariatric surgery procedure for long-term weight loss maintenance [117, 118]; therefore the metabolic changes after bariatric surgery described in this review mainly focus on this weight loss surgery (Figure 1).

Compare with other gastric surgery procedures RYGB surgery induces greater and sustain rapidly weight loss, between 65 and 75% of excess body weight and fat mass [119]. Moreover, after RYGB improvement of glucose homeostasis and dyslipidemia and decreased diabetes it has been reported [110, 119, 120].

Taking into account the relevant role of RYGB in improving obesity and associated pathologies, an increasing number of studies focus on the main modifications of peripheral signals regulating energy balance after RYGB.

**4.1. Hormonal Changes Associated with Gastric Surgery.** Studies of ghrelin-circulating levels after bariatric surgery showed different controversial results with the surgery procedure. With respect to RYGB strategy, studies have showed that ghrelin levels decreased, increased, or did not change [121–126]. These different results found on ghrelin plasma levels

after RYGB can be explained by the variability in the time at which blood was drawn, the operative technique used, and the remnant gastric pouch in any case. Regarding the remaining bariatric surgery procedures the ghrelin levels are variables. For example, several studies have reported an increase or no change in ghrelin levels after AGB [127–131], a decrease after SG procedure [124, 132, 133], and a decrease or no change both in DJB and in BPD [133, 134].

The bibliography reported controversial data about the modification of the pattern of secretion of CCK after gastric surgery. In fact, the published works about this topic have revealed great variations in the production of CCK depending on the type of procedure. The studies performed after jejunoileal bypass surgery showed an increase in the density of CCK mucosal enteroendocrine cells [135] both in humans and in rats [136]. Moreover, in patients after this surgery procedure CCK levels were increased 3 months [137] and even 20 years [138] after surgery. The first studies with RYGB surgery failed to find modifications in the postprandial CCK response to an enriched protein-fat meal six months after surgery [139]. However, more recently, changes in postprandial CCK levels were reported in patients 2 weeks after surgery [140]. All together might lead to proposing that the increase in postprandial CCK levels might contribute to early satiety after RYGB surgery.

Different studies have showed that circulating GLP-1 levels increase after RYGB surgery, prior to weight loss occurrence which may participate in remission of diabetes [122, 130, 141–143]. In the other bariatric surgery procedures variable responses to circulating GLP-1 levels were showed [134].

It has been demonstrated that circulating nesfatin-1 levels decreased after RYGB surgery [144].

Several studies in animals and humans have revealed that the changes in circulating levels of gastrin after surgery depend on the selected procedure. It has been reported that the levels of serum gastrin strongly increase at 6 and 36 weeks after SG surgery in rats. However, this hypergastrinemia found after SG was not observed in the case of DJB procedure [145]. Similar results were found in patients who showed high circulating gastrin levels after SG, but no modifications were observed after AGB [146, 147]. Regarding RYGB procedure, fasting plasma concentrations of gastrin were unchanged after surgery, although under postprandial conditions these levels were decreased [140]. The fact that SG surgery produces an increase in circulating gastrin levels can be caused by the major reduction of the oxyntic mucosa achieved by this procedure. Accordingly, this reduction of the mucosa leads to hypoacidity decreasing the inhibitory effect of luminal hydrochloric acid on gastrin secretion [145, 148].

Several studies have reported a decrease in circulating leptin levels after RYGB intervention [123, 126, 130, 149, 150]. This fact is not striking taking into account the fact that the circulating leptin concentrations are correlated with body fat mass percent and it has been proved that RYGB surgery reduces adiposity. AGB procedure is the only bariatric surgery strategy where an increase in leptin levels has been reported [130, 151–153], although there are studies which showed no changes or decrease in post-AGB leptin levels [134].

The studies that have researched the adiponectin levels after bariatric surgery have reported an increase in circulating levels after RYGB procedure [142, 150, 154–158].

**4.2. Gut Microbiota Changes.** Several studies show that gut microbial ecology changes significantly after bariatric surgery. Recently, it has been reported that RYGB procedure modifies the gut microbiota profiles in both rats and humans [93, 159, 160]. Gut microbiota analysis has reported that a decrease in the Firmicutes/Bacteroides ratio and an increase in Proteobacteria taxonomic group are induced after RYGB [93, 117, 160–163]. Liou and coworkers have showed that these marked modifications in gut microbiota are due to gastrointestinal reconfiguration caused after RYGB intervention [162]. In the case of Proteobacteria group, which is a bile-tolerant bacterium, the greater amount of free bile acids released into the intestine after RYGB create an environment more hospitable which is responsible for Proteobacteria growth [134]. Moreover, it has been demonstrated that RYGB-associated gut microbiota is able to produce a decrease in body weight and adiposity, probably reducing the ability to harvest energy from diet or regulating lipid metabolism and upregulating energy expenditure through microbial products [93, 162].

## 5. Conclusions

The main mechanism responsible for the beneficial effect of bariatric surgery could be related to variations in the pattern of secretion of peripheral signals, especially those derived from the gastrointestinal tract. However, until now controversial results have been published which do not allow fully elucidating the mechanism responsible for the restoration of body weight after bariatric surgery.

## Conflict of Interests

The authors declare that there is no conflict of interests regarding the publication of this paper.

## Acknowledgments

This research has been funded by Instituto de Salud Carlos III (PS09/02075 and PI1202021) and cofunded by FEDER, Xunta de Galicia (10 PXIB 918 273PR), and Fundación Mutua Madrileña. Ciber Obn, Centro de Investigación Biomedica en Red Fisiopatología de la Obesidad y Nutrición, is an ISCIII initiative. Silvia Barja-Fernández is funded by Xunta de Galicia, Cintia Folgueira by IDIS, and Cecilia Castelao by Ciber Obn. Luisa M. Seoane is funded by SERGAS.

## References

- [1] WHO, *The SuRF Report 2*, 2005.
- [2] European-Commission, *Strategy for Europe and Nutrition, Overweight and Obesity Related Health Issues—Implementation Progress Report 2010*, European-Commission, 2010.

- [3] Y. Wang and M. A. Beydoun, "The obesity epidemic in the United States—gender, age, socioeconomic, racial/ethnic, and geographic characteristics: a systematic review and meta-regression analysis," *Epidemiologic Reviews*, vol. 29, no. 1, pp. 6–28, 2007.
- [4] R. J. Rodgers, M. H. Tschöp, and J. P. H. Wilding, "Anti-obesity drugs: past, present and future," *Disease Models & Mechanisms*, vol. 5, no. 5, pp. 621–626, 2012.
- [5] C. W. Breaux, "Obesity surgery in children," *Obesity Surgery*, vol. 5, no. 3, pp. 279–284, 1995.
- [6] WHO, *Obesity and Overweight-Fact Sheet*, WHO, 2006.
- [7] J. A. Rivera, S. Barquera, F. Campirano, I. Campos, M. Safdie, and V. Tovar, "Epidemiological and nutritional transition in Mexico: rapid increase of non-communicable chronic diseases and obesity," *Public Health Nutrition*, vol. 5, no. 1 A, pp. 113–122, 2002.
- [8] B. M. Popkin, L. S. Adair, and S. W. Ng, "Global nutrition transition and the pandemic of obesity in developing countries," *Nutrition Reviews*, vol. 70, no. 1, pp. 3–21, 2012.
- [9] M. Carotenuto, N. Santoro, A. Grandone et al., "The insulin gene variable number of tandem repeats (INS VNTR) genotype and sleep disordered breathing in childhood obesity," *Journal of Endocrinological Investigation*, vol. 32, no. 9, pp. 752–755, 2009.
- [10] NHLBI, "Clinical guidelines on the identification, evaluation and treatment of overweight and obesity in adults: the evidence report," Tech. Rep. 98-4083, 1998.
- [11] A. H. Mokdad, E. S. Ford, B. A. Bowman et al., "Diabetes trends in the U.S.: 1990–1998," *Diabetes Care*, vol. 23, no. 9, pp. 1278–1283, 2000.
- [12] K. O'Dea, "Overview of the thrifty genotype hypothesis," *Asia Pacific Journal of Clinical Nutrition*, vol. 4, pp. 339–340, 1995.
- [13] C. Diéguez, M. J. Vazquez, A. Romero, M. López, and R. Nogueiras, "Hypothalamic control of lipid metabolism: focus on leptin, ghrelin and melanocortins," *Neuroendocrinology*, vol. 94, no. 1, pp. 1–11, 2011.
- [14] R. Lage, C. Diéguez, A. Vidal-Puig, and M. López, "AMPK: a metabolic gauge regulating whole-body energy homeostasis," *Trends in Molecular Medicine*, vol. 14, no. 12, pp. 539–549, 2008.
- [15] S. J. Guyenet and M. W. Schwartz, "Regulation of food intake, energy balance, and body fat mass: implications for the pathogenesis and treatment of obesity," *The Journal of Clinical Endocrinology and Metabolism*, vol. 97, no. 3, pp. 745–755, 2012.
- [16] O. Al-Massadi, A. B. Crujeiras, R. C. González et al., "Age, sex, and lactating status regulate ghrelin secretion and GOAT mRNA levels from isolated rat stomach," *The American Journal of Physiology—Endocrinology and Metabolism*, vol. 299, no. 3, pp. E341–E350, 2010.
- [17] P. E. Sawchenko, "Central connections of the sensory and motor nuclei of the vagus nerve," *Journal of the Autonomic Nervous System*, vol. 9, no. 1, pp. 13–26, 1983.
- [18] S. J. Konturek, T. Brzozowski, P. C. Konturek et al., "Brain-gut and appetite regulating hormones in the control of gastric secretion and mucosal protection," *Journal of Physiology and Pharmacology*, vol. 59, no. 2, pp. 7–31, 2008.
- [19] H.-R. Berthoud, "The vagus nerve, food intake and obesity," *Regulatory Peptides*, vol. 149, no. 1–3, pp. 15–25, 2008.
- [20] M. T. Neary and R. L. Batterham, "Gut hormones: implications for the treatment of obesity," *Pharmacology & Therapeutics*, vol. 124, no. 1, pp. 44–56, 2009.
- [21] C. Folgueira, L. M. Seoane, and F. F. Casanueva, "The brain-stomach connection," *Frontiers of Hormone Research*, vol. 42, pp. 83–92, 2014.
- [22] D. Cota, G. Marsicano, B. Lutz et al., "Endogenous cannabinoid system as a modulator of food intake," *International Journal of Obesity and Related Metabolic Disorders*, vol. 27, no. 3, pp. 289–301, 2003.
- [23] M. R. Pazos, R. M. Tolón, C. Benito et al., "Cannabinoid CB1 receptors are expressed by parietal cells of the human gastric mucosa," *The Journal of Histochemistry and Cytochemistry*, vol. 56, no. 5, pp. 511–516, 2008.
- [24] M. Kojima, H. Hosoda, Y. Date, M. Nakazato, H. Matsuo, and K. Kangawa, "Ghrelin is a growth-hormone-releasing acylated peptide from stomach," *Nature*, vol. 402, no. 6762, pp. 656–660, 1999.
- [25] Y. Date, M. Kojima, H. Hosoda et al., "Ghrelin, a novel growth hormone-releasing acylated peptide, is synthesized in a distinct endocrine cell type in the gastrointestinal tracts of rats and humans," *Endocrinology*, vol. 141, no. 11, pp. 4255–4261, 2000.
- [26] O. Al Massadi, M. H. Tschöp, and J. Tong, "Ghrelin acylation and metabolic control," *Peptides*, vol. 32, no. 11, pp. 2301–2308, 2011.
- [27] H. Ariyasu, K. Takaya, T. Tagami et al., "Stomach is a major source of circulating ghrelin, and feeding state determines plasma ghrelin-like immunoreactivity levels in humans," *The Journal of Clinical Endocrinology and Metabolism*, vol. 86, no. 10, pp. 4753–4758, 2001.
- [28] A. Inui, A. Asakawa, C. Y. Bowers et al., "Ghrelin, appetite, and gastric motility: the emerging role of the stomach as an endocrine organ," *The FASEB Journal*, vol. 18, no. 3, pp. 439–456, 2004.
- [29] L. M. Seoane, O. Al-Massadi, F. Barreiro, C. Dieguez, and F. F. Casanueva, "Growth hormone and somatostatin directly inhibit gastric ghrelin secretion. An in vitro organ culture system," *Journal of Endocrinological Investigation*, vol. 30, no. 9, pp. RC22–RC25, 2007.
- [30] A. M. Wren and S. R. Bloom, "Gut hormones and appetite control," *Gastroenterology*, vol. 132, no. 6, pp. 2116–2130, 2007.
- [31] L. M. Seoane, O. Al-Massadi, J. E. Caminos, S. A. Tovar, C. Dieguez, and F. F. Casanueva, "Sensory stimuli directly acting at the central nervous system regulate gastric ghrelin secretion. An ex vivo organ culture study," *Endocrinology*, vol. 148, no. 8, pp. 3998–4006, 2007.
- [32] M. Tschöp, C. Weyer, P. A. Tataranni, V. Devanarayan, E. Ravussin, and M. L. Heiman, "Circulating ghrelin levels are decreased in human obesity," *Diabetes*, vol. 50, no. 4, pp. 707–709, 2001.
- [33] T. K. Hansen, R. Dall, H. Hosoda et al., "Weight loss increases circulating levels of ghrelin in human obesity," *Clinical Endocrinology*, vol. 56, no. 2, pp. 203–206, 2002.
- [34] H. R. Kissileff, F. X. Pi-Sunyer, J. Thornton, and G. P. Smith, "C-terminal octapeptide of cholecystokinin decreases food intake in man," *The American Journal of Clinical Nutrition*, vol. 34, no. 2, pp. 154–160, 1981.
- [35] R. C. Ritter, M. Covasa, and C. A. Matson, "Cholecystokinin: proofs and prospects for involvement in control of food intake and body weight," *Neuropeptides*, vol. 33, no. 5, pp. 387–399, 1999.
- [36] F. A. Duca and M. Covasa, "Current and emerging concepts on the role of peripheral signals in the control of food intake and development of obesity," *The British Journal of Nutrition*, vol. 108, no. 5, pp. 778–793, 2012.
- [37] K. Zwirska-Korcza, S. J. Konturek, M. Sodowski et al., "Basal and postprandial plasma levels of PYY, ghrelin, cholecystokinin, gastrin and insulin in women with moderate and morbid

- obesity and metabolic syndrome," *Journal of Physiology and Pharmacology*, vol. 58, no. 1, pp. 13–35, 2007.
- [38] J.-F. Gautier, S.-P. Choukem, and J. Girard, "Physiology of incretins (GIP and GLP-1) and abnormalities in type 2 diabetes," *Diabetes & Metabolism*, vol. 34, supplement 2, pp. S65–S72, 2008.
- [39] B. Kreymann, G. Williams, M. A. Ghatti, and S. R. Bloom, "Glucagon-like peptide-1(7-36): a physiological incretin in man," *The Lancet*, vol. 2, no. 8571, pp. 1300–1304, 1987.
- [40] R. M. Elliott, L. M. Morgan, J. A. Tredger, S. Deacon, J. Wright, and V. Marks, "Glucagon-like peptide-1(7-36)amide and glucose-dependent insulinotropic polypeptide secretion in response to nutrient ingestion in man: acute post-prandial and 24-h secretion patterns," *The Journal of Endocrinology*, vol. 138, no. 1, pp. 159–166, 1993.
- [41] E. Adamska, L. Ostrowska, M. Gońska, and A. Kretowski, "The role of gastrointestinal hormones in the pathogenesis of obesity and type 2 diabetes," *Przegląd Gastroenterologiczny*, vol. 9, no. 2, pp. 69–76, 2014.
- [42] J. J. Holst, "The physiology of glucagon-like peptide 1," *Physiological Reviews*, vol. 87, no. 4, pp. 1409–1439, 2007.
- [43] L. L. Baggio and D. J. Drucker, "Biology of Incretins: GLP-1 and GIP," *Gastroenterology*, vol. 132, no. 6, pp. 2131–2157, 2007.
- [44] S. E. Kanoski, S. M. Fortin, M. Arnold, H. J. Grill, and M. R. Hayes, "Peripheral and central GLP-1 receptor populations mediate the anorectic effects of peripherally administered GLP-1 receptor agonists, liraglutide and exendin-4," *Endocrinology*, vol. 152, no. 8, pp. 3103–3112, 2011.
- [45] D. A. D'Alessio, D. A. Sandoval, and R. J. Seeley, "New ways in which GLP-1 can regulate glucose homeostasis," *The Journal of Clinical Investigation*, vol. 115, no. 12, pp. 3406–3408, 2005.
- [46] F. Rodriguez de Fonseca, M. Navarro, E. Alvarez et al., "Peripheral versus central effects of glucagon-like peptide-1 receptor agonists on satiety and body weight loss in Zucker obese rats," *Metabolism: Clinical and Experimental*, vol. 49, no. 6, pp. 709–717, 2000.
- [47] C. R. Abbott, M. Monteiro, C. J. Small et al., "The inhibitory effects of peripheral administration of peptide YY(3-36) and glucagon-like peptide-1 on food intake are attenuated by ablation of the vagal-brainstem-hypothalamic pathway," *Brain Research*, vol. 1044, no. 1, pp. 127–131, 2005.
- [48] P. K. Chelikani, A. C. Haver, and R. D. Reidelberger, "Intravenous infusion of glucagon-like peptide-1 potently inhibits food intake, sham feeding, and gastric emptying in rats," *The American Journal of Physiology—Regulatory Integrative and Comparative Physiology*, vol. 288, no. 6, pp. R1695–R1706, 2005.
- [49] E. B. Rüttimann, M. Arnold, J. J. Hillebrand, N. Geary, and W. Langhans, "Intrameal hepatic portal and intraperitoneal infusions of glucagon-like peptide-1 reduce spontaneous meal size in the rat via different mechanisms," *Endocrinology*, vol. 150, no. 3, pp. 1174–1181, 2009.
- [50] K. A. Scott and T. H. Moran, "The GLP-1 agonist exendin-4 reduces food intake in nonhuman primates through changes in meal size," *The American Journal of Physiology—Regulatory Integrative and Comparative Physiology*, vol. 293, no. 3, pp. R983–R987, 2007.
- [51] E. Näslund, M. Gutniak, S. Skogar, S. Rössner, and P. M. Hellström, "Glucagon-like peptide 1 increases the period of post-prandial satiety and slows gastric emptying in obese men," *The American Journal of Clinical Nutrition*, vol. 68, no. 3, pp. 525–530, 1998.
- [52] J. P. Gutzwiller, J. Drewe, B. Göke et al., "Glucagon-like peptide-1 promotes satiety and reduces food intake in patients with diabetes mellitus type 2," *The American Journal of Physiology—Regulatory Integrative and Comparative Physiology*, vol. 276, no. 5, pp. R1541–R1544, 1999.
- [53] A. Flint, A. Raben, A. Astrup, and J. J. Holst, "Glucagon-like peptide 1 promotes satiety and suppresses energy intake in humans," *The Journal of Clinical Investigation*, vol. 101, no. 3, pp. 515–520, 1998.
- [54] A. Flint, A. Raben, A. K. Ersbøll, J. J. Holst, and A. Astrup, "The effect of physiological levels of glucagon-like peptide-1 on appetite, gastric emptying, energy and substrate metabolism in obesity," *International Journal of Obesity and Related Metabolic Disorders*, vol. 25, no. 6, pp. 781–792, 2001.
- [55] C. Verdich, A. Flint, J.-P. Gutzwiller et al., "A meta-analysis of the effect of glucagon-like peptide-1 (7-36) amide on ad libitum energy intake in humans," *The Journal of Clinical Endocrinology and Metabolism*, vol. 86, no. 9, pp. 4382–4389, 2001.
- [56] N. Fukase, M. Igarashi, H. Takahashi et al., "Hypersecretion of truncated glucagon-like peptide-1 and gastric inhibitory polypeptide in obese patients," *Diabetic Medicine*, vol. 10, no. 1, pp. 44–49, 1993.
- [57] T. Vilsbøll, T. Krarup, J. Sonne et al., "Incretin secretion in relation to meal size and body weight in healthy subjects and people with type 1 and type 2 diabetes mellitus," *The Journal of Clinical Endocrinology and Metabolism*, vol. 88, no. 6, pp. 2706–2713, 2003.
- [58] C. Verdich, S. Toubro, B. Buemann, J. Lysegård Madsen, J. Juul Holst, and A. Astrup, "The role of postprandial releases of insulin and incretin hormones in meal-induced satiety—effect of obesity and weight reduction," *International Journal of Obesity and Related Metabolic Disorders*, vol. 25, no. 8, pp. 1206–1214, 2001.
- [59] L. R. Ranganath, J. M. Beety, L. M. Morgan, J. W. Wright, R. Howland, and V. Marks, "Attenuated GLP-1 secretion in obesity: cause or consequence?" *Gut*, vol. 38, no. 6, pp. 916–919, 1996.
- [60] P. J. Tomasik, K. Sztéfko, and A. Malek, "GLP-1 as a satiety factor in children with eating disorders," *Hormone and Metabolic Research*, vol. 34, no. 2, pp. 77–80, 2002.
- [61] R. Lugari, A. Dei Cas, D. Ugolotti et al., "Glucagon-like peptide 1 (GLP-1) secretion and plasma dipeptidyl peptidase IV (DPP-IV) activity in morbidly obese patients undergoing biliopancreatic diversion," *Hormone and Metabolic Research*, vol. 36, no. 2, pp. 111–115, 2004.
- [62] M.-B. Toft-Nielsen, M. B. Damholt, S. Madsbad et al., "Determinants of the impaired secretion of glucagon-like peptide-1 in type 2 diabetic patients," *The Journal of Clinical Endocrinology and Metabolism*, vol. 86, no. 8, pp. 3717–3723, 2001.
- [63] A. A. Vaag, J. J. Holst, A. Vølund, and H. Beck-Nielsen, "Gut incretin hormones in identical twins discordant for non-insulin-dependent diabetes mellitus (NIDDM)—evidence for decreased glucagon-like peptide 1 secretion during oral glucose ingestion in NIDDM twins," *European Journal of Endocrinology*, vol. 135, no. 4, pp. 425–432, 1996.
- [64] E. Muscelli, A. Mari, A. Casolaro et al., "Separate impact of obesity and glucose tolerance on the incretin effect in normal subjects and type 2 diabetic patients," *Diabetes*, vol. 57, no. 5, pp. 1340–1348, 2008.
- [65] I. S. Oh, H. Shimizu, T. Satoh et al., "Identification of nesfatin-1 as a satiety molecule in the hypothalamus," *Nature*, vol. 443, no. 7112, pp. 709–712, 2006.



- [66] M. Goebel-Stengel and L. Wang, "Central and peripheral expression and distribution of NUCB2/nesfatin-1," *Current Pharmaceutical Design*, vol. 19, no. 39, pp. 6935–6940, 2013.
- [67] A. Stengel, M. Mori, and Y. Taché, "The role of nesfatin-1 in the regulation of food intake and body weight: Recent developments and future endeavors," *Obesity Reviews*, vol. 14, no. 11, pp. 859–870, 2013.
- [68] A. Stengel, M. Goebel, and Y. Taché, "Nesfatin-1: a novel inhibitory regulator of food intake and body weight," *Obesity Reviews*, vol. 12, no. 4, pp. 261–271, 2011.
- [69] D. García-Galiano and M. Tena-Sempere, "Emerging roles of NUCB2/Nesfatin-1 in the metabolic control of reproduction," *Current Pharmaceutical Design*, vol. 19, no. 39, pp. 6966–6972, 2013.
- [70] B. K. Tan, M. Hallschmid, W. Kern, H. Lehnert, and H. S. Randevara, "Decreased cerebrospinal fluid/plasma ratio of the novel satiety molecule, nesfatin-1/NUCB-2, in obese humans: evidence of nesfatin-1/NUCB-2 resistance and implications for obesity treatment," *The Journal of Clinical Endocrinology and Metabolism*, vol. 96, no. 4, pp. E669–E673, 2011.
- [71] M. Ramanjaneya, J. Chen, J. E. Brown et al., "Identification of nesfatin-1 in human and murine adipose tissue: a novel depot-specific adipokine with increased levels in obesity," *Endocrinology*, vol. 151, no. 7, pp. 3169–3180, 2010.
- [72] J. H. Walsh, "Role of gastrin as a trophic hormone," *Digestion*, vol. 47, supplement 1, pp. 11–16, 49–52, 1990.
- [73] J. F. Rehfeld and F. Stadil, "The effect of gastrin on basal- and glucose-stimulated insulin secretion in man," *The Journal of Clinical Investigation*, vol. 52, no. 6, pp. 1415–1426, 1973.
- [74] M. Adami, P. Frati, S. Bertini et al., "Gastric antisecretory role and immunohistochemical localization of cannabinoid receptors in the rat stomach," *British Journal of Pharmacology*, vol. 135, no. 7, pp. 1598–1606, 2002.
- [75] G. Coruzzi, M. Adami, G. Coppelli, P. Frati, and G. Soldani, "Inhibitory effect of the cannabinoid receptor agonist WIN 55,212-2 on pentagastrin-induced gastric acid secretion in the anaesthetized rat," *Naunyn-Schmiedeberg's Archives of Pharmacology*, vol. 360, no. 6, pp. 715–718, 1999.
- [76] M. Adami, R. Zamfirova, E. Sotirov et al., "Gastric antisecretory effects of synthetic cannabinoids after central or peripheral administration in the rat," *Brain Research Bulletin*, vol. 64, no. 4, pp. 357–361, 2004.
- [77] R. S. Ahima and J. S. Flier, "Leptin," *Annual Review of Physiology*, vol. 62, pp. 413–437, 2000.
- [78] L. M. Seoane, M. López, S. Tovar, F. F. Casanueva, R. Señaris, and C. Diéguez, "Agouti-related peptide, neuropeptide Y, and somatostatin-producing neurons are targets for ghrelin actions in the rat hypothalamus," *Endocrinology*, vol. 144, no. 2, pp. 544–551, 2003.
- [79] A. T. Turer and P. E. Scherer, "Adiponectin: mechanistic insights and clinical implications," *Diabetologia*, vol. 55, no. 9, pp. 2319–2326, 2012.
- [80] J. Fruebis, T.-S. Tsao, S. Javorschi et al., "Proteolytic cleavage product of 30-kDa adipocyte complement-related protein increases fatty acid oxidation in muscle and causes weight loss in mice," *Proceedings of the National Academy of Sciences of the United States of America*, vol. 98, no. 4, pp. 2005–2010, 2001.
- [81] K. Kishida, T. Funahashi, and I. Shimomura, "Adiponectin as a routine clinical biomarker," *Best Practice & Research: Clinical Endocrinology and Metabolism*, vol. 28, no. 1, pp. 119–130, 2014.
- [82] M. Blüher, "Adipokines—removing road blocks to obesity and diabetes therapy," *Molecular Metabolism*, vol. 3, no. 3, pp. 230–240, 2014.
- [83] N. M. Delzenne and P. D. Cani, "Interaction between obesity and the gut microbiota: relevance in nutrition," *Annual Review of Nutrition*, vol. 31, pp. 15–31, 2011.
- [84] F. Bäckhed, H. Ding, T. Wang et al., "The gut microbiota as an environmental factor that regulates fat storage," *Proceedings of the National Academy of Sciences of the United States of America*, vol. 101, no. 44, pp. 15718–15723, 2004.
- [85] P. D. Cani, J. Amar, M. A. Iglesias et al., "Metabolic endotoxemia initiates obesity and insulin resistance," *Diabetes*, vol. 56, no. 7, pp. 1761–1772, 2007.
- [86] P. D. Cani, R. Bibiloni, C. Knauf et al., "Changes in gut microbiota control metabolic endotoxemia-induced inflammation in high-fat diet-induced obesity and diabetes in mice," *Diabetes*, vol. 57, no. 6, pp. 1470–1481, 2008.
- [87] P. D. Cani, S. Possemiers, T. van de Wiele et al., "Changes in gut microbiota control inflammation in obese mice through a mechanism involving GLP-2-driven improvement of gut permeability," *Gut*, vol. 58, no. 8, pp. 1091–1103, 2009.
- [88] P. J. Turnbaugh, R. E. Ley, M. A. Mahowald, V. Magrini, E. R. Mardis, and J. I. Gordon, "An obesity-associated gut microbiome with increased capacity for energy harvest," *Nature*, vol. 444, no. 7122, pp. 1027–1031, 2006.
- [89] P. J. Turnbaugh, F. Bäckhed, L. Fulton, and J. I. Gordon, "Diet-induced obesity is linked to marked but reversible alterations in the mouse distal gut microbiome," *Cell Host & Microbe*, vol. 3, no. 4, pp. 213–223, 2008.
- [90] E. F. Murphy, P. D. Cotter, S. Healy et al., "Composition and energy harvesting capacity of the gut microbiota: relationship to diet, obesity and time in mouse models," *Gut*, vol. 59, no. 12, pp. 1635–1642, 2010.
- [91] L. Geurts, V. Lazarevic, M. Derrien et al., "Altered gut microbiota and endocannabinoid system tone in obese and diabetic leptin-resistant mice: Impact on apelin regulation in adipose tissue," *Frontiers in Microbiology*, vol. 2, article 149, 2011.
- [92] R. E. Ley, D. A. Peterson, and J. I. Gordon, "Ecological and evolutionary forces shaping microbial diversity in the human intestine," *Cell*, vol. 124, no. 4, pp. 837–848, 2006.
- [93] J.-P. Furet, L.-C. Kong, J. Tap et al., "Differential adaptation of human gut microbiota to bariatric surgery-induced weight loss: links with metabolic and low-grade inflammation markers," *Diabetes*, vol. 59, no. 12, pp. 3049–3057, 2010.
- [94] G. G. Muccioli, D. Naslain, F. Bäckhed et al., "The endocannabinoid system links gut microbiota to adipogenesis," *Molecular Systems Biology*, vol. 6, article 392, 2010.
- [95] R. F. Kushner, "Weight loss strategies for treatment of obesity," *Progress in Cardiovascular Diseases*, vol. 56, no. 4, pp. 465–472, 2014.
- [96] M. L. Dansinger, J. A. Gleason, J. L. Griffith, H. P. Selker, and E. J. Schaefer, "Comparison of the Atkins, Ornish, Weight Watchers, and Zone Diets for weight loss and heart disease risk reduction: a randomized trial," *Journal of the American Medical Association*, vol. 293, no. 1, pp. 43–53, 2005.
- [97] E. S. Leblanc, E. O'Connor, E. P. Whitlock, C. D. Patnode, and T. Kapka, "Effectiveness of primary care-relevant treatments for obesity in adults: a systematic evidence review for the U.S. Preventive Services Task Force," *Annals of Internal Medicine*, vol. 155, no. 7, pp. 434–447, 2011.
- [98] M. Blüher, "Clinical relevance of adipokines," *Diabetes & Metabolism Journal*, vol. 36, no. 5, pp. 317–327, 2012.

- [99] S. Z. Yanovski and J. A. Yanovski, "Long-term drug treatment for obesity: a systematic and clinical review," *Journal of the American Medical Association*, vol. 311, no. 1, pp. 74–86, 2014.
- [100] T. D. Müller, L. M. Sullivan, K. Habegger et al., "Restoration of leptin responsiveness in diet-induced obese mice using an optimized leptin analog in combination with exendin-4 or FGF21," *Journal of Peptide Science*, vol. 18, no. 6, pp. 383–393, 2012.
- [101] J. T. Heiker, N. Klötting, P. Kovacs et al., "Vaspin inhibits kallikrein 7 by serpin mechanism," *Cellular and Molecular Life Sciences*, vol. 70, no. 14, pp. 2569–2583, 2013.
- [102] C. Cantó and J. Auwerx, "PGC-1 $\alpha$ , SIRT1 and AMPK, an energy sensing network that controls energy expenditure," *Current Opinion in Lipidology*, vol. 20, no. 2, pp. 98–105, 2009.
- [103] L. L. Senin, O. Al-Massadi, C. Fogueira et al., "The gastric CB1 receptor modulates ghrelin production through the mTOR pathway to regulate food intake," *PLoS ONE*, vol. 8, no. 11, Article ID e80339, 2013.
- [104] A. Caixas, L. Albert, I. Capel, and M. Rigla, "Naltrexone sustained-release/bupropion sustained-release for the management of obesity: review of the data to date," *Drug Design, Development and Therapy*, vol. 8, pp. 1419–1427, 2014.
- [105] S. Barja-Fenández, R. Leis, F. F. Casanueva, and L. M. Seoane, "Drug development strategies for the treatment of obesity: how to ensure efficacy, safety, and sustainable weight loss," *Drug Design, Development and Therapy*, no. 8, pp. 2391–2400, 2014.
- [106] "Gastrointestinal surgery for severe obesity: National Institutes of Health consensus development conference statement," *The American Journal of Clinical Nutrition*, vol. 55, no. 2, supplement, pp. 615S–619S, 1992.
- [107] A. D. Miras and C. W. le Roux, "Mechanisms underlying weight loss after bariatric surgery," *Nature Reviews. Gastroenterology & Hepatology*, vol. 10, no. 10, pp. 575–584, 2013.
- [108] V. Ionut, M. Burch, A. Youdim, and R. N. Bergman, "Gastrointestinal hormones and bariatric surgery-induced weight loss," *Obesity*, vol. 21, no. 6, pp. 1093–1103, 2013.
- [109] J. B. Dixon, C. W. le Roux, F. Rubino, and P. Zimmet, "Bariatric surgery for type 2 diabetes," *The Lancet*, vol. 379, no. 9833, pp. 2300–2311, 2012.
- [110] L. M. S. Carlsson, M. Peltonen, S. Ahlin et al., "Bariatric surgery and prevention of type 2 diabetes in Swedish obese subjects," *The New England Journal of Medicine*, vol. 367, no. 8, pp. 695–704, 2012.
- [111] S. Scholtz, A. D. Miras, N. Chhina et al., "Obese patients after gastric bypass surgery have lower brain-hedonic responses to food than after gastric banding," *Gut*, vol. 63, no. 6, pp. 891–902, 2014.
- [112] I. Melnikova and D. Wages, "Anti-obesity therapies," *Nature Reviews Drug Discovery*, vol. 5, no. 5, pp. 369–370, 2006.
- [113] P. Topart, G. Becouarn, A. Sallé, and P. Ritz, "Biliopancreatic diversion requires multiple vitamin and micronutrient adjustments within 2 years of surgery," *Surgery for Obesity and Related Diseases*, vol. 10, no. 5, pp. 936–941, 2014.
- [114] H. P. Santry, D. L. Gillen, and D. S. Lauderdale, "Trends in bariatric surgical procedures," *The Journal of the American Medical Association*, vol. 294, no. 15, pp. 1909–1917, 2005.
- [115] L. Sjöström, M. Peltonen, P. Jacobson et al., "Bariatric surgery and long-term cardiovascular events," *Journal of the American Medical Association*, vol. 307, no. 1, pp. 56–65, 2012.
- [116] M. A. Stefater, H. E. Wilson-Pérez, A. P. Chambers, D. A. Sandoval, and R. J. Seeley, "All bariatric surgeries are not created equal: insights from mechanistic comparisons," *Endocrine Reviews*, vol. 33, no. 4, pp. 595–622, 2012.
- [117] M. Osto, K. Abegg, M. Bueter, C. W. le Roux, P. D. Cani, and T. A. Lutz, "Roux-en-Y gastric bypass surgery in rats alters gut microbiota profile along the intestine," *Physiology & Behavior*, vol. 119, pp. 92–96, 2013.
- [118] M. Gass, C. Beglinger, and R. Peterli, "Metabolic surgery—principles and current concepts," *Langenbeck's Archives of Surgery*, vol. 396, no. 7, pp. 949–972, 2011.
- [119] I. J. Hatoum, D. M. Greenawalt, C. Cotsapas, M. L. Reitman, M. J. Daly, and L. M. Kaplan, "Heritability of the weight loss response to gastric bypass surgery," *The Journal of Clinical Endocrinology & Metabolism*, vol. 96, no. 10, pp. E1630–E1633, 2011.
- [120] T. Auguet, X. Terra, M. Hernández et al., "Clinical and adipocytokine changes after bariatric surgery in morbidly obese women," *Obesity*, vol. 22, no. 1, pp. 188–194, 2014.
- [121] R. Peterli, B. Wölnerhanssen, T. Peters et al., "Improvement in glucose metabolism after bariatric surgery: comparison of laparoscopic roux-en-Y gastric bypass and laparoscopic sleeve gastrectomy: a prospective randomized trial," *Annals of Surgery*, vol. 250, no. 2, pp. 234–241, 2009.
- [122] M. Nannipieri, S. Baldi, A. Mari et al., "Roux-en-Y gastric bypass and sleeve gastrectomy: mechanisms of diabetes remission and role of gut hormones," *The Journal of Clinical Endocrinology & Metabolism*, vol. 98, no. 11, pp. 4391–4399, 2013.
- [123] X. Terra, T. Auguet, E. Guiu-Jurado et al., "Long-term changes in leptin, chemerin and ghrelin levels following different bariatric surgery procedures: Roux-en-Y gastric bypass and sleeve gastrectomy," *Obesity Surgery*, vol. 23, no. 11, pp. 1790–1798, 2013.
- [124] A. Youssef, J. Emmanuel, E. Karra et al., "Differential effects of laparoscopic sleeve gastrectomy and laparoscopic gastric bypass on appetite, circulating acyl-ghrelin, peptide YY3-36 and active GLP-1 levels in non-diabetic humans," *Obesity Surgery*, vol. 24, no. 2, pp. 241–252, 2014.
- [125] W.-J. Lee, C.-Y. Chen, K. Chong, Y.-C. Lee, S.-C. Chen, and S.-D. Lee, "Changes in postprandial gut hormones after metabolic surgery: a comparison of gastric bypass and sleeve gastrectomy," *Surgery for Obesity and Related Diseases*, vol. 7, no. 6, pp. 683–690, 2011.
- [126] C. Holdstock, B. E. Engström, M. Öhrvall, L. Lind, M. Sundbom, and F. A. Karlsson, "Ghrelin and adipose tissue regulatory peptides: effect of gastric bypass surgery in obese humans," *Journal of Clinical Endocrinology and Metabolism*, vol. 88, no. 7, pp. 3177–3183, 2003.
- [127] A. F. R. Dixon, J. B. Dixon, and P. E. O'Brien, "Laparoscopic adjustable gastric banding induces prolonged satiety: a randomized blind crossover study," *The Journal of Clinical Endocrinology and Metabolism*, vol. 90, no. 2, pp. 813–819, 2005.
- [128] R. Stoeckli, R. Clianda, I. Langer, and U. Keller, "Changes of body weight and plasma ghrelin levels after gastric banding and gastric bypass," *Obesity Research*, vol. 12, no. 2, pp. 346–350, 2004.
- [129] A. C. Krieger, H. Youn, F. Modersitzki et al., "Effects of laparoscopic adjustable gastric banding on sleep and metabolism: a 12-month follow-up study," *International Journal of General Medicine*, vol. 5, pp. 975–981, 2012.
- [130] J. Korner, W. Inabnet, G. Febres et al., "Prospective study of gut hormone and metabolic changes after adjustable gastric banding and Roux-en-Y gastric bypass," *International Journal of Obesity*, vol. 33, no. 7, pp. 786–795, 2009.

- [131] F. Rodieux, V. Giusti, D. A. D'Alessio, M. Suter, and L. Tappy, "Effects of gastric bypass and gastric banding on glucose kinetics and gut hormone release," *Obesity (Silver Spring)*, vol. 16, no. 2, pp. 298–305, 2008.
- [132] E. Dimitriadis, M. Daskalakis, M. Kampa, A. Peppe, J. A. Papadakis, and J. Melissas, "Alterations in gut hormones after laparoscopic sleeve gastrectomy: a prospective clinical and laboratory investigational study," *Annals of Surgery*, vol. 257, no. 4, pp. 647–654, 2013.
- [133] M. Tsoli, A. Chronaiou, I. Kehagias, F. Kalfarentzos, and T. K. Alexandrides, "Hormone changes and diabetes resolution after biliopancreatic diversion and laparoscopic sleeve gastrectomy: a comparative prospective study," *Surgery for Obesity and Related Diseases*, vol. 9, no. 5, pp. 667–677, 2013.
- [134] T. E. Sweeney and J. M. Morton, "Metabolic surgery: action via hormonal milieu changes, changes in bile acids or gut microbiota? A summary of the literature," *Best Practice & Research. Clinical Gastroenterology*, vol. 28, pp. 727–740, 2014.
- [135] L. Ockander, J. L. Hedenbro, J. F. Rehfeld, and K. Sjölund, "Jejunioileal bypass changes the duodenal cholecystokinin and somatostatin cell density," *Obesity Surgery*, vol. 13, no. 4, pp. 584–590, 2003.
- [136] C. B. Chan, A. M. J. Buchan, K. A. Green, and R. A. Pederson, "The effect of jejunioileal bypass (JIB) in the obese Zucker rat on a sub-group of enteroendocrine cells," *International Journal of Obesity*, vol. 11, no. 3, pp. 285–293, 1987.
- [137] A. M. J. Buchan, R. A. Pederson, I. Koop, R. H. Gourlay, and I. G. M. Cleator, "Morphological and functional alterations to a sub-group of regulatory peptides in human pancreas and intestine after jejuno-ileal bypass," *International Journal of Obesity*, vol. 17, no. 2, pp. 109–113, 1993.
- [138] E. Näslund, P. Grybäck, P. M. Hellström et al., "Gastrointestinal hormones and gastric emptying 20 years after jejunioileal bypass for massive obesity," *International Journal of Obesity*, vol. 21, no. 5, pp. 387–392, 1997.
- [139] J. M. Kellum, J. F. Kuemmerle, T. M. O'Dorisio et al., "Gastrointestinal hormone responses to meals before and after gastric bypass and vertical banded gastroplasty," *Annals of Surgery*, vol. 211, no. 6, pp. 763–770, 1990.
- [140] S. H. Jacobsen, S. C. Olesen, C. Dirksen et al., "Changes in gastrointestinal hormone responses, insulin sensitivity, and beta-cell function within 2 weeks after gastric bypass in non-diabetic subjects," *Obesity Surgery*, vol. 22, no. 7, pp. 1084–1096, 2012.
- [141] R. Peterli, R. E. Steinert, B. Woelnerhanssen et al., "Metabolic and hormonal changes after laparoscopic Roux-en-Y gastric bypass and sleeve gastrectomy: a randomized, prospective trial," *Obesity Surgery*, vol. 22, no. 5, pp. 740–748, 2012.
- [142] C. P. de Carvalho, D. M. Marin, A. L. de Souza et al., "GLP-1 and adiponectin: effect of weight loss after dietary restriction and gastric bypass in morbidly obese patients with normal and abnormal glucose metabolism," *Obesity Surgery*, vol. 19, no. 3, pp. 313–320, 2009.
- [143] S. Evans, Z. Pamuklar, J. Rosko et al., "Gastric bypass surgery restores meal stimulation of the anorexigenic gut hormones glucagon-like peptide-1 and peptide YY independently of caloric restriction," *Surgical Endoscopy and Other Interventional Techniques*, vol. 26, no. 4, pp. 1086–1094, 2012.
- [144] W.-J. Lee, C.-Y. Chen, K.-H. Ser et al., "Differential influences of gastric bypass and sleeve gastrectomy on plasma nesfatin-1 and obestatin levels in patients with type 2 diabetes mellitus," *Current Pharmaceutical Design*, vol. 19, no. 32, pp. 5830–5835, 2013.
- [145] E. Grong, I. B. Arbo, O. K. Thu, E. Kuhry, B. Kulseng, and R. Mårvik, "The effect of duodenojejunosomy and sleeve gastrectomy on type 2 diabetes mellitus and gastrin secretion in Goto-Kakizaki rats," *Surgical Endoscopy*, vol. 29, no. 3, pp. 723–733, 2015.
- [146] T. Sillakivi, J. Suumann, Ü. Kirsimägi, and A. Peetsalu, "Plasma levels of gastric biomarkers in patients after bariatric surgery: biomarkers after bariatric surgery," *Hepato-Gastroenterology*, vol. 60, no. 128, pp. 2129–2132, 2013.
- [147] J. R. Shak, J. Roper, G. I. Perez-Perez et al., "The effect of laparoscopic gastric banding surgery on plasma levels of appetite-control, insulinotropic, and digestive hormones," *Obesity Surgery*, vol. 18, no. 9, pp. 1089–1096, 2008.
- [148] N. Basso, D. Capoccia, M. Rizzello et al., "First-phase insulin secretion, insulin sensitivity, ghrelin, GLP-1, and PYY changes 72 h after sleeve gastrectomy in obese diabetic patients: The gastric hypothesis," *Surgical Endoscopy*, vol. 25, no. 11, pp. 3540–3550, 2011.
- [149] N. G. de la Torre, M. A. Rubio, E. Bordiú et al., "Effects of weight loss after bariatric surgery for morbid obesity on vascular endothelial growth factor-A, adipocytokines, and insulin," *The Journal of Clinical Endocrinology & Metabolism*, vol. 93, no. 11, pp. 4276–4281, 2008.
- [150] B. Woelnerhanssen, R. Peterli, R. E. Steinert, T. Peters, Y. Borbély, and C. Beglinger, "Effects of postbariatric surgery weight loss on adipokines and metabolic parameters: comparison of laparoscopic Roux-en-Y gastric bypass and laparoscopic sleeve gastrectomy—a prospective randomized trial," *Surgery for Obesity and Related Diseases*, vol. 7, no. 5, pp. 561–568, 2011.
- [151] G. Frühbeck, A. Diez-Caballero, J. Gómez-Ambrosi et al., "Disruption of the leptin-insulin relationship in obese men 24 hours after laparoscopic adjustable silicone gastric banding," *Obesity Surgery*, vol. 12, no. 3, pp. 366–371, 2002.
- [152] P. Maruna, R. Gürlich, M. Fried, R. Frasko, I. Chachkhanian, and M. Haluzik, "Leptin as an acute phase reactant after non-adjustable laparoscopic gastric banding," *Obesity Surgery*, vol. 11, no. 5, pp. 609–614, 2001.
- [153] M. A. Trakhtenbroit, J. G. Leichman, M. F. Algahim et al., "Body weight, insulin resistance, and serum adipokine levels 2 years after 2 types of bariatric surgery," *The American Journal of Medicine*, vol. 122, no. 5, pp. 435–442, 2009.
- [154] F. Carrasco, K. Basfi-Fer, P. Rojas et al., "Changes in bone mineral density after sleeve Gastrectomy or gastric bypass: relationships with variations in vitamin D, ghrelin, and adiponectin levels," *Obesity Surgery*, vol. 24, no. 6, pp. 877–884, 2014.
- [155] C. C. Coughlin, B. N. Finck, J. C. Eagon et al., "Effect of marked weight loss on adiponectin gene expression and plasma concentrations," *Obesity*, vol. 15, no. 3, pp. 640–645, 2007.
- [156] M. M. Swarbrick, I. T. Austrheim-Smith, K. L. Stanhope et al., "Circulating concentrations of high-molecular-weight adiponectin are increased following Roux-en-Y gastric bypass surgery," *Diabetologia*, vol. 49, no. 11, pp. 2552–2558, 2006.
- [157] C. Shrestha, H. He, Y. Liu, S. Zhu, J. Xiong, and Z. Mo, "Changes in adipokines following laparoscopic Roux-en-Y gastric bypass surgery in Chinese individuals with type 2 diabetes mellitus and BMI of 22–30 kg·m<sup>-2</sup>," *International Journal of Endocrinology*, vol. 2013, Article ID 240971, 6 pages, 2013.
- [158] L. M. Umeda, A. Z. Pereira, G. Carneiro, C. H. Arasaki, and M. T. Zanella, "Postprandial adiponectin levels are associated

with improvements in postprandial triglycerides after Roux-en-Y gastric bypass in type 2 diabetic patients,” *Metabolic Syndrome and Related Disorders*, vol. 11, no. 5, pp. 343–348, 2013.

- [159] J. V. Li, H. Ashrafiyan, M. Bueter et al., “Metabolic surgery profoundly influences gut microbial-host metabolic cross-talk,” *Gut*, vol. 60, no. 9, pp. 1214–1223, 2011.
- [160] H. Zhang, J. K. DiBaise, A. Zuccolo et al., “Human gut microbiota in obesity and after gastric bypass,” *Proceedings of the National Academy of Sciences of the United States of America*, vol. 106, no. 7, pp. 2365–2370, 2009.
- [161] J. V. Li, R. Reshat, Q. Wu et al., “Experimental bariatric surgery in rats generates a cytotoxic chemical environment in the gut contents,” *Frontiers in Microbiology*, vol. 2, article 183, 2011.
- [162] A. P. Liou, M. Paziuk, J.-M. Luevano Jr., S. Machineni, P. J. Turnbaugh, and L. M. Kaplan, “Conserved shifts in the gut microbiota due to gastric bypass reduce host weight and adiposity,” *Science Translational Medicine*, vol. 5, no. 178, Article ID 178ra41, 2013.
- [163] J. Graessler, Y. Qin, H. Zhong et al., “Metagenomic sequencing of the human gut microbiome before and after bariatric surgery in obese patients with type 2 diabetes: correlation with inflammatory and metabolic parameters,” *The Pharmacogenomics Journal*, vol. 13, no. 6, pp. 514–522, 2013.