


Research Article

Efficacy and Safety of Chuan Huang Fang Combining Reduced Glutathione in Treating Acute Kidney Injury (Grades 1–2) on Chronic Kidney Disease (Stages 2–4): Study Protocol for a Multicenter Randomized Controlled Clinical Trial

Ling Chen  and Xuezhong Gong 

Department of Nephrology, Shanghai Municipal Hospital of Traditional Chinese Medicine, Shanghai University of Traditional Chinese Medicine, 274 Zhijiang Middle Road, Shanghai 200071, China

Correspondence should be addressed to Xuezhong Gong; shnanshan@hotmail.com

Received 28 August 2021; Revised 11 January 2022; Accepted 22 February 2022; Published 14 March 2022

Academic Editor: Min Li

Copyright © 2022 Ling Chen and Xuezhong Gong. This is an open access article distributed under the Creative Commons Attribution License, which permits unrestricted use, distribution, and reproduction in any medium, provided the original work is properly cited.

Background. Acute kidney injury (AKI) is a global public health challenge resulting in considerable morbidity and mortality. AKI on chronic kidney disease (CKD) (AKI on CKD, A on C) accounts for about a third of total AKI. For severe AKI grade 3, renal replacement therapy (RRT) should be implemented in time. However, the lack of recognized drug treatment method for AKI grades 1–2 is a crucial problem in clinic. Chuan Huang Fang (CHF) is a Chinese herbal formulation developed for the treatment of A on C from the Shanghai Municipal Hospital of Traditional Chinese Medicine. Our previous studies suggested that CHF might effectively protect renal functions of A on C patients. As a widely used antioxidant in clinic, reduced glutathione (RG) is reported to improve the clinical efficacy of high-flux hemodialysis (HFHD) in severe AKI patients recently. To address the crucial problem mentioned above, thus we design a new clinical protocol of CHF combining RG and try to evaluate the efficacy and safety of this protocol in treating patients diagnosed with CKD stages 2–4 complicated with AKI grades 1–2. **Methods.** This is a multicenter randomized controlled clinical trial. We intend to enroll 162 participants, and these participants will be divided into the RG group, the CHF group, and the RG + CHF group randomly assigning 1:1:1 principle. The RG group will be general treatments combining RG, the CHF group will be general treatments combining CHF, and the RG + CHF group will be general treatments combining RG and CHF. The duration of treatment will last two weeks. The primary evaluation outcome will be the change in the slope of serum creatinine (Scr) over 2 weeks. Secondary evaluation outcomes include changes in blood urea nitrogen (BUN), estimated glomerular filtration rate (eGFR), urinary AKI biomarkers (neutrophil gelatinase-associated lipocalin (NGAL), interleukin-18 (IL-18), gamma-glutamyl transpeptidase (γ -GT), etc.), traditional Chinese medicine (TCM) symptoms, inflammatory indicators, and oxidative stress indicators. Meanwhile, the vital sign indicators and adverse events (AEs) will be closely observed. These dates will be meticulously recorded and properly handled by investigators throughout the study. **Discussion.** This study will provide convictive research-derived data to evaluate clinical efficacy and safety of CHF combing RG for CKD stages 2–4 complicated with AKI grades 1–2 and provide an evidence-based recommendation for clinicians. The timely completion of this trial will provide a novel drug treatment method for A on C. This trial is registered with ChiCTR2100043311 and registered on February 9, 2021.

1. Introduction

AKI is defined as an abrupt decrease in kidney function, which encompasses both structural damage and functional loss [1]. According to 2012 Kidney Disease Improving

Global Outcomes (KDIGO-2012) AKI definition [2], it is diagnosed by an increase in Scr to at least 0.3 mg/dl (26.5 μ mol/l) within 48 hours, or an increase in Scr to more than 1.5 times baseline during prior 7 days, or a urine volume decrease to less than 0.5 ml/kg/h for 6 hours. AKI is a

global public health challenge [3], it is a severe complication caused by various critical diseases leading to considerable morbidity and mortality both in short term and long term [4, 5], and it implicates a great burden in sanitary costs [6]. A on C accounts for about a third of total AKI [7]. It is estimated that there are more than 13 million patients with AKI worldwide every year [8]. US statistical data indicate that the incidence of AKI is about 2100 per million [9]. A study on the clinical status of AKI in China points out that over 2 million patients are hospitalized with AKI, and about 700,000 patients died of AKI every year [10].

For severe AKI (grade 3), RRT should be implemented as soon as possible. It is reported that about 26.9% of patients with AKI require RRT eventually [11]. Current modalities of RRT for AKI include intermittent hemodialysis (IHD), continuous renal replacement therapy (CRRT), and peritoneal dialysis (PD). Also, sustained low-efficiency dialysis (SLED) has been put forward as an alternative RRT method and applied to clinical practice in many medical institutions worldwide [2, 12]. Recently, although AKI has attracted more and more attention and lots of related basic or clinical studies have been accomplished, there is still a lack of recognized drug treatment method for AKI grades 1–2 [13–15].

Studies have confirmed that oxidative stress injuries exist in the occurrence of AKI, and it plays an important role in affecting the prognosis of AKI [16]. At the same time, oxidative stress might induce inflammation by activating macrophages and complement systems, which would aggravate the potential kidney damage [16, 17]. Therefore, it is of great significance to pay more attention to the effect of oxidative stress in AKI.

Furthermore, several studies have shown that increasing pro-inflammatory biomarkers in AKI patients have a close connection with an elevated short-term mortality [18, 19]. Studies on AKI show that tumor necrosis factor- α (TNF- α), interleukin-6 (IL-6), and other cytokines have a significant meaning in the process of inflammation mediation [20]. During the early period of AKI, renal blood flow insufficiency might lead to sub-fatal renal tubular injury, and the inflammatory mediators generated by the injury might lead to vasoconstriction and aggravate ischemia. In addition, A on C may be the result of combined effects of abnormal hemodynamics, inflammation, oxidative stress, decreased prostaglandin synthesis, and increased synthesis of thromboxane in renal cortex [15, 21–23].

Based on the published data, during RRT unpopular period, Chinese doctors used to treat AKI with TCM methods [24]. CHF is a Chinese herbal formulation of Professor Gong Xuezhong for treating A on C developed from the Shanghai Municipal Hospital of Traditional Chinese Medicine [25], and our previous small sample clinical studies suggest that CHF might effectively protect renal functions of A on C patients by preventing oxidant damage and inhibiting inflammation [15, 26, 27]. In the process of AKI, numerous oxygen-free radicals are generated, endogenous antioxidants are constantly consumed, and large numbers of inflammatory factors are released, aggravating kidney injury [28]. Reduced glutathione (RG) can effectively

control the local inflammatory response, reduce the accumulation of reactive oxygen species in renal tissues, lower the level of inflammatory factors, and relieve oxidative stress in organs and tissues [29–31]. Recently, RG is reported to improve the clinical efficacy of HFHD in patients with severe AKI [32, 33]. Therefore, we plan to further optimize the original protocol, using CHF combining RG to form a new treatment method and finally carry out such a multicenter randomized controlled clinical trial on CKD stages 2–4 complicated with AKI grades 1–2 to evaluate the clinical efficacy and safety of this new method. The timely completion of this trial will provide a novel drug treatment method for A on C.

2. Methods

2.1. Objectives. This clinical trial is based on years of research studies in the early stage, which lays a solid foundation for successful completion. The aim was to evaluate the efficacy and safety of new treatment method CHF combining RG in treating A on C.

2.2. Study Design and Setting. This is a multicenter randomized controlled clinical trial in which participants will be recruited from the department of nephrology. Three hospitals are listed below: (1) Shanghai Municipal Hospital of Traditional Chinese Medicine; (2) Shuguang Hospital Affiliated to Shanghai University of Traditional Chinese Medicine; and (3) Minhang Branch of Yueyang Hospital of Integrative Chinese and Western Medicine Affiliated to Shanghai University of Traditional Chinese Medicine.

The design of this trial follows strict scientific clinical research methodology and complies with principles of the *Declaration of Helsinki* [34] and the *Guidelines for Good Clinical Practice* [35].

This trial is registered in the Chinese Clinical Trial Register (No. ChiCTR2100043311). The study flow chart is shown in Figure 1.

2.3. Participants. This trial plans to enroll potential eligible participants diagnosed with CKD stages 2–4 complicated with AKI grades 1–2 with spleen-kidney qi deficiency and toxicity stasis inter-combination syndrome. To encourage patients to participate in the trial, we will post recruitment posters in the above three hospitals and trial advertisements will also be accessed through study's Web page. Besides, we will pay attention to enrollment progress to make sure it could reach the target sample size.

2.3.1. Diagnostic Criteria for AKI. According to KDIGO clinical practice guideline for acute kidney injury [2] and Quality Control Manual of Shanghai Nephrology Department [36], patients would be diagnosed with AKI if (1) increase in Scr by ≥ 0.3 mg/dl ($\geq 26.5 \mu\text{mol/l}$) within 48 hours; or (2) increase in Scr to ≥ 1.5 times baseline during prior 7 days; or (3) urine volume < 0.5 ml/kg/h for 6 hours. If patients cannot provide Scr baseline, clinicians can refer to

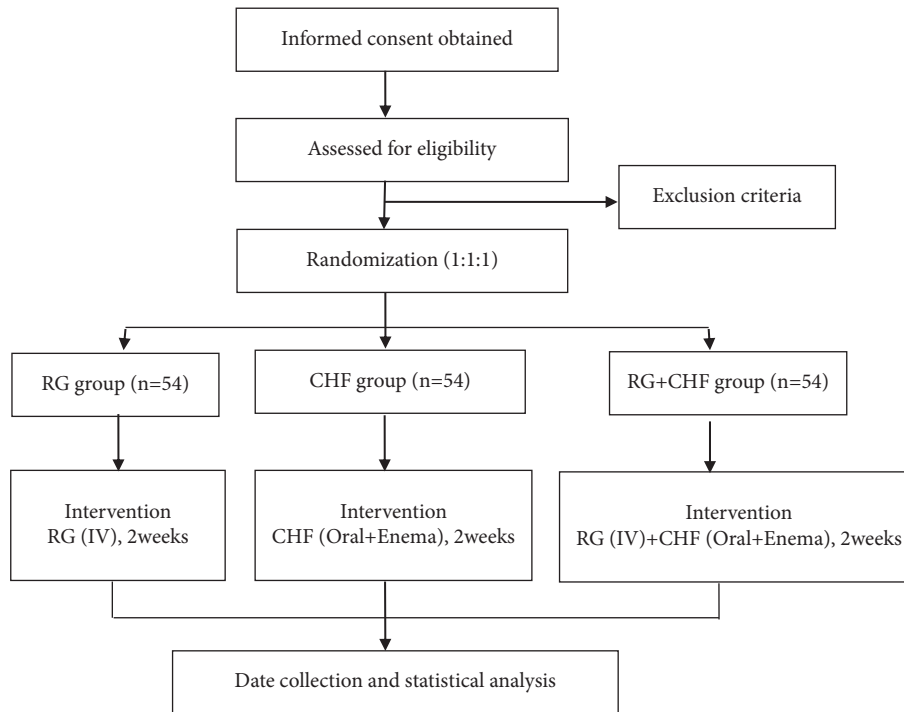


FIGURE 1: Flow chart of the study. RG: reduced glutathione, CHF: Chuan Huang Fang.

Scr value within the last 3 months (no more than 1 year at the longest). If the value is still not available, patients should be required to repeat testing Scr within 24 hours to help diagnose AKI. KDIGO classification of AKI is as follows (Table 1).

2.3.2. Diagnostic Criteria for CKD. CKD is characterized by structural or functional abnormalities in the kidney, and the complex symptom situation lasts for more than 3 months, impacting health well-being [37]. KDIGO classification of CKD is as follows (Table 2).

2.3.3. Diagnostic Criteria for TCM Syndrome Differentiation. According to Guidelines for Clinical Research of Chinese Medicine (New Drug) [38] and Diagnosis, Syndrome Differentiation, and Efficacy Evaluation of Chronic Renal Failure (Trial Protocol) [39], patients conformed to 4 primary symptoms and 1–2 secondary symptoms listed below can be diagnosed with spleen-kidney qi deficiency and toxicity stasis inter-combination syndrome. The primary symptoms are as follows: (1) fatigue or shortness of breath and reluctance to speak; (2) nausea and vomiting; (3) dim complexion; and (4) soreness in waists and knees. The secondary symptoms are as follows: (1) abdominal fullness and distention; (2) lack of appetite and numb to react; (3) squamous and dry skin; (4) thick and greasy tongue coating; (5) dark and purple tongue or petechiae; and (6) fine tart or slow sunken pulse.

2.3.4. Inclusion Criteria. Participants will be enrolled in the trial if they satisfy all the following criteria: (1) meet the

diagnostic criteria for CKD stages 2–4 and AKI grades 1–2; (2) meet the diagnostic criteria of TCM syndrome differentiation; (3) 24 h U-pro ≤ 2.5 g; (4) between 18 and 70 years old; and (5) voluntary to be enrolled in the clinical trial and sign informed consents.

2.3.5. Exclusion Criteria. Participants will not be enrolled in the trial if they have any of the following criteria: (1) pregnancy or lactation; (2) with serious primary diseases of other organs in urgent need of immediate treatment or with malignant tumors, active tuberculosis, and other consumption diseases; (3) with anorectal diseases not suitable for enema; (4) kidney transplantation; (5) psychopaths, patients who cannot cooperate; (6) allergic to therapeutic medicine; and (7) participating in clinical trials or participated in other clinical trials within 3 months.

2.3.6. Withdrawal Criteria. Participants will withdraw from the trial if (1) poor subject compliance; (2) allergic to therapeutic medicine; (3) cases lost to follow-up in the trial; (4) patients request to withdraw from the trial; (5) cannot meet the inclusion criteria after inclusion; and (6) serious diseases or complications occur suddenly during the trial that has no causal relationship with AKI. Participants developing serious diseases or complications during the treatment cannot be withdrawn until the assessment of causal relationship with AKI has been accomplished. Complications such as cardiorenal syndrome and sepsis usually indicate the progression of AKI and should not be simply excluded from the efficacy analysis. Reasons should be given for withdrawal cases, and related forms should be

TABLE 1: KDIGO classification of AKI.

Stage	Serum creatinine	Urine output
1	1.5–1.9 times baseline, or ≥ 0.3 mg/dl ($26.5 \mu\text{mol/l}$) increase	< 0.5 ml/kg/h for 6–12 h
2	2.0–2.9 times baseline	< 0.5 ml/kg/h for ≥ 12 h
3	3.0 times baseline, or ≥ 4.0 mg/dl ($353.6 \mu\text{mol/l}$), or initiation of RRT, or < 18 years, eGFR < 35 ml/min per 1.73 m^2	< 0.3 ml/kg/h for ≥ 24 h or anuria for ≥ 12 hours

TABLE 2: KDIGO classification of CKD.

GFR category	GFR (ml/min/ 1.73 m^2)	Terms
G1	≥ 90	Normal or high
G2	60–89	Mildly decreased
G3a	45–59	Mildly to moderately decreased
G3b	30–44	Moderately to severely decreased
G4	15–29	Severely decreased
G5	< 15	Kidney failure

reserved for future reference. Those cases are not statistically analyzed for efficacy, but adverse reactions should be analyzed for those who have received at least one treatment and can be determined to have records of adverse reactions. Participants who withdraw within two weeks after treatment will be defined as missing case and will not be enrolled in the pee-protocol population.

2.3.7. Shedding Criteria. Natural shedding and loss of follow-up during observation may occur during the trial. He/she will quit by himself/herself if it is not suitable to continue participating in the trial because of severe complications or unpredictable events. Shedding cases should be documented in detail, and intention-to-treat (ITT) analysis should be performed in the end.

2.3.8. Trial Suspension Criteria. It is essential to suspend the trial if serious safety problems occur during the process of trial. The chief supervisor will be in charge of dealing with this particular situation when it occurs. Critical issues should be recorded in detail and handled properly. All collected data will only be analyzed in the end, and no planned interim analyses will be performed.

2.4. Randomization and Blinding. A simple random method is adopted, and SPSS (version 21.0) software will be used by independent biostatisticians to generate random number sequences. Written informed consent should be signed immediately by himself/herself, agreeing to voluntarily enroll in the trial. Participants should be consented for randomization and participation. According to the sequence of enrolling in clinical observation, participants will be randomly numbered and divided into the RG group, the CHF group, and the RG + CHF group by investigators at 1 : 1 : 1 ratio. During randomization producer, sealed envelopes marked with sequential coding numbers will be adopted to

keep allocation details, and group allocation should be kept blind to patients, biostatisticians, and investigators. As placebo is not used in the control group, it is not possible to be blind in the treatment. However, it is masked from staff performing all laboratory investigations.

2.5. Interventions. Patients diagnosed with CKD stages 2–4 complicated with AKI grades 1–2 will be enrolled after signing written informed consents. They will be randomly divided into the RG group, the CHF group, and the RG + CHF group. To minimize potential loss and help participants conduct the trial smoothly, three group patients will receive study behavior and health education, and they will also be told possible risks and benefits, their rights and obligations, and how to handle an emergency situation. All patients will receive a low-salt, high-quality, and low-protein diet (protein intake 0.6–0.8 g/kg/d). Also, they will receive general treatments, whose purposes are to correct water, electrolyte, and acid-base balance disorders, control blood pressure, improve anemia, and correct renal bone diseases. Designed investigations will keep in touch with participants regularly and assist them to receive treatment and testing on schedule.

The RG group will be given RG 1.8 g added to 0.9% normal saline or 5% glucose 250 ml for injection, intravenous injection (IV), once per day for 2 weeks. The CHF group will be given CHF orally, twice per day for 2 weeks. At the same time, the concentrated solution of CHF will be given an enema, once per day for 5 days, and then rest for 2 days, 5 times in a week. The RG + CHF group will be the combination of the RG group and the CHF group, and intervention methods are the same as the above.

Pharmaceutical compositions of CHF are mainly as follows: prepared rhubarb (Zhida Huang), Ligusticum wallichii (Chuan Xiong), Codonopsis pilosula (Dangshen), Coptidis rhizome (Huanglian), Smilacis glabrae (Tufuling), etc. RG will be produced by Chongqing Yaoyou Pharmaceutical Co. Ltd., and CHF will be produced by Jiangyin Tianjiang Pharmaceutical Co. Ltd. Therefore, the quantity and quality of medicine can be effectively guaranteed.

Related examinations will be conducted and collected at baseline, every 1 week during treatment. Patient information will be recorded, and efficacy-related examinations, mechanism-related indicators, safety-related indicators, and drug management will be closely observed. Measured items and time points are listed in Table 3.

2.6. Outcome Measures. The primary evaluation outcome will be the change in the slope of Scr over 2 weeks. Post-treatment changes in BUN, eGFR, and urinary AKI

TABLE 3: SPIRIT table: measured items and time points.

Items	Baseline	Treatment	
	0 week	1 week	2 weeks
General	×		
Informed consent	×		
Inclusion and exclusion criteria	×		
General information	×		
General physical examination	×		
Urine HCG (only women)	×		
Medical and drug use history	×		
Concomitant disease and treatment	×		
Combined medication	×	×	×
Randomization	×		
Intervention			
RG group		⇔	
CHF group		⇔	
RG + CHF group		⇔	
Effectiveness observation			
Renal functions (Scr, BUN, eGFR)	×		×
AKI biomarkers (NGAL, IL-18, γ-GT)	×		×
TCM symptoms	×		×
Mechanism observation			
Inflammatory indicators (IL-6, TNF-α)	×		×
Oxidative stress indicators (HO-1, MDA, SOD)	×		×
Safety observation			
Electrocardiogram	×		×
Blood routine	×		×
Urine routine	×		×
Fecal routine and occult blood test	×		×
Serum potassium	×		×
Hemoglobin	×		×
Adverse events		×	×
Drug management			
Drug distribution	×	×	×
Drug recycling		×	×
Drug count		×	×
Research conclusion			×

biomarkers including urinary NGAL, IL-18, γ -GT, and TCM symptoms will be the secondary evaluation outcomes.

In addition to the secondary evaluation outcome, inflammatory indicators including TNF- α and IL-6 and oxidative stress indicators including heme oxygenase-1 (HO-1), malondialdehyde (MDA), and superoxide dismutase (SOD) will also be measured before and after treatment.

Safety outcomes and vital sign indicators (electrocardiogram, blood routine, urine routine, serum potassium, hemoglobin, etc.) will be recorded once before and 2 weeks after medication. Meanwhile, AEs will be closely observed, meticulously recorded, and properly handled by investigators throughout the study.

HCG: human chorionic gonadotropin; Scr: serum creatinine; BUN: blood urea nitrogen; eGFR: estimated glomerular filtration rate; TCM: traditional Chinese medicine; NGAL: neutrophil gelatinase-associated lipocalin; IL-18: interleukin-18; γ -GT: gamma-glutamyl transpeptidase; IL-6: interleukin-6; TNF- α : tumor necrosis factor- α ; HO-1: heme oxygenase-1; MDA: malondialdehyde; SOD: superoxide dismutase.

2.7. Evaluation Criteria for TCM Syndrome Effect. Statistics are carried out according to the improvement of clinical symptom score with reference to the *Guidelines for Clinical Research of Chinese Medicine (New Drug)* [38], and the primary and secondary symptoms of spleen-kidney qi deficiency and toxicity stasis inter-combination syndrome will be classified as mild, moderate, and severe with 4, 8, and 12 points and 2, 4, and 8 points, respectively. The two total scores calculated by the measurement scale according to TCM symptoms for each patient will be summed up, and then, they will be used to calculate efficacy indicator (EI):

$$EI = (\text{total symptom score before treatment} - \text{total symptom score after treatment}) / \text{total symptom score before treatment} \times 100\%$$

EI is adopted to evaluate the treatment efficacy after treatment. Symptom improvement levels will be demonstrated in following categories: clinical control (EI \geq 95%), significant effect (94% > EI \geq 70%), and effectiveness (69% > EI \geq 30%) to inefficacy (EI < 30%).

2.8. Data Entry and Management. Case report forms (CRFs) will be filled out by investigators, and each selected participant must complete CRFs. All information in CRFs should be accurately and truthfully recorded. Completed CRFs will be inspected by the clinical supervisor, and then, they should be delivered to the data administrators. Data entry and management will be accomplished by designated data administrators. Patients' personal information should be kept strictly confidential. All data should be recognized through coding numbers without displaying their personal information directly. All data will not be accessible without the permission of the supervisor. The data administrator will use EpiData software to compile data entry software and carry out data entry and management. The supervisor will be in charge of data entry and management procedure. As GCP requires, all data is required to keep for at least five years in the database after the trial accomplishes.

2.9. Sample Size Estimation. The sample size will be calculated according to the primary outcome of baseline Scr change. Based on previous studies and literature reports [26, 30], the mean value of Scr was $160.39 \mu\text{mol/l}$, and the standard deviation was $44.43 \mu\text{mol/l}$. We thus hypothesize that Scr for CHF combing RG group would be significantly lower than the other two groups by more than $30 \mu\text{mol/l}$. It is calculated using the sample size estimation software PASS (version 15.0.3) to achieve test efficacy $1-\beta=0.90$ and significant difference $\alpha=0.05$ (one-sided test). Considering 20% drop rate, the estimated sample size for randomization will be 54 cases in each group for a total of 162 cases.

2.10. Statistical Analysis. The principal analysis will be conducted on a full analysis set (FAS), which consists of participants randomly allocated into two groups. Participants completing and complying well with the study protocol without major violation will be referred to the per-protocol population. All participants taking test drugs will be enrolled in safety analysis and conform with the ITT principle.

For non-normally distributed variables, mean \pm standard deviation or median will be brought to describe continuous variables. Categorical variables will be presented in the form of numbers and percentages. The difference in Scr will be tested using the one-way ANOVA with repeated measures. The secondary outcomes will be compared between two groups using the independent-samples Student's *t*-tests for normally distributed continuous data and using Pearson's chi-square test (or Fisher's exact test if cell count <5 in any cell) for categorical data. Two-sided tests will be used for all statistical tests, and $P < 0.05$ will be considered statistically significant. SPSS (version 21.0) software will be used to carry out statistical analysis by a biostatistician not involved in the study. No additional analyses or interim analysis will be performed.

2.11. Quality Control of Data. Before initiating the trial, a conference will be held in Shanghai to make sure all

participants can receive centralized training. They will receive professional training to ensure accurate, complete, and timely recording of observations and results in the CRFs. The clinical protocol is designed on the foundation of expertise and clinical experience of all participants to ensure it is scientific and operational. Patients will be selected strictly according to inclusion and exclusion criteria, and the entire trial process will follow a multicenter randomized controlled clinical design. At each site, test sample materials including blood, urine, and other materials will be collected and delivered to the central laboratory for analysis and destruction to reduce data bias. If there are AEs during the trial, appropriate treatments should be taken for subjects and it is necessary to report the situation to authorities immediately. Biostatisticians will participate in designing the trial and analyzing collected data up to the end of the trial. Data administrators will primarily conduct manual checks of data entry and then perform systematic checks after completion. The data monitoring committee (DMC) will meet regularly to monitor the conduct of the trial and evaluate quality control of data.

2.12. Safety Assessment. In this trial, AEs are recognized as negative or untoward medical manifestations during the study conducting period, regardless of the possibility of a causal relationship. CHF has been applied to clinical treatments and animal experiments for many years and proved an effective prescription, and no obvious AEs have been observed. According to the package insert of RG, it may have skin rash and other allergic symptoms such as anorexia, nausea, upper abdominal discomfort, and other gastrointestinal symptoms occasionally. Relevant AEs occurring in this trial will be recorded systematically in detail throughout the trial. Meticulous description of event cause, subsequent interventions, handling outcome, and other relevant information will also be included in the form. If AEs occur, the patient will be closely observed and properly taken care of until AEs disappear. It is essential to carry out follow-up investigations. Besides, the results should be recorded in detail and then reasons will be analyzed. Serious adverse events (SAEs) are as follows: (1) critical or life-threatening complications; (2) hospitalization or disability, even death; and (3) other serious event significant hazards to participants. AEs and SAEs will be monitored and evaluated by researchers, and then, researchers will give related participants proper treatments and report them to authorities. They will also be reported in trial publications at the end of the study.

2.13. Ethics Approval. This trial must be conducted in accordance with the *Declaration of Helsinki* [34], and it has been approved by the international review board of each participating hospital. This trial has been approved by the Ethics Committee of the Shanghai Municipal Hospital of Traditional Chinese Medicine (No. 2020SHL-KYYS-60) and other ethics committees at each center. When each patient is enrolled, investigators should introduce the purpose, procedure, and possible risks of the study and then ask patients

to sign informed consent forms. The relevant personal information of participants and potential participants will be kept confidential throughout the whole trial process and will not be disclosed to anyone else other than staff in charge of the trial.

3. Discussion

Considering AKI is a clinical syndrome defined as rapid loss of renal function and CKD is characterized by structural or functional abnormalities in the kidney, AKI and CKD are closely connected. Meanwhile, AKI is a common factor causing CKD. While AKI-to-CKD transition has already been numerous reported, studies of A on C are relatively limited [3–6]. It is well known that AKI occurring in patients with CKD is commonly more intractable to handle. Besides, CKD is also a significant hazardous element for the progress of AKI [40]. Related studies demonstrated that the preexistence of CKD jeopardized renal function in AKI patients and postponed its recovery after AKI [41].

TCM has been widely used in the treatment of kidney diseases in China [42]. CHF is a Chinese herbal formulation for treating A on C and has achieved positive clinical efficacy in our previous clinical studies [15, 26, 27]. Tetramethylpyrazine (TMP), as an active ingredient of CHF and herbal medicine *Ligusticum wallichii* (Chuanxiong), could prevent AKI by the possible mechanisms of alleviating oxidative stress injury, inhibiting inflammation, preventing apoptosis of intrinsic renal cells, and regulating autophagy [43–45]. Recently, increasing clinical and experimental studies suggest that TMP might effectively prevent AKI in several AKI models [43, 46, 47].

According to the KDIGO guidelines, the main treatment strategies for AKI are to stabilize the body's internal environment and most treatments are supportive [2]. During the early stage of AKI, it is essential to find out the major cause, maintain hemodynamic stabilization, and deal with complex complications [48]. In consideration of autoregulation mechanisms damaged in AKI, maintaining hemodynamic stabilization should be attached great significance to [49]. As stated above, RG could clear away the harmful peroxide metabolites, restrain oxidative stress, and play certain metabolic roles in inflammatory factors [29–31].

RRT is intended for severe AKI grade 3, while there still lacks recognized drug treatment method for AKI grades 1–2 [11, 13–15]. Based on our previous clinical data and the current developments of A on C clinical treatment, we thus design such a new protocol about the drug treatment method of CHF combining RG for CKD stages 2–4 complicated with AKI grades 1–2. We hope that the present multicenter randomized controlled clinical trial will be helpful to solve this clinical problem. It could be considered that CHF combining RG might effectively reduce renal injury in patients with A on C, promote recovery of renal function, and improve clinical symptoms of patients, and thus it has acceptable clinical application values. On this basis, we will further observe the curative effect of combination CHF with RG for A on C patients to obtain more direct clinical evidence.

Abbreviations

AKI:	Acute kidney injury
CKD:	Chronic kidney disease
RRT:	Renal replacement therapy
CHF:	Chuan Huang Fang
RG:	Reduced glutathione
HFHD:	High-flux hemodialysis
Scr:	Serum creatinine
BUN:	Blood urea nitrogen
eGFR:	Estimated glomerular filtration rate
NGAL:	Neutrophil gelatinase-associated lipocalin
IL-18:	Interleukin-18
γ -GT:	Gamma-glutamyl transpeptidase
TCM:	Traditional Chinese medicine
AEs:	Adverse events
IHD:	Intermittent hemodialysis
CRRT:	Continuous renal replacement therapy
PD:	Peritoneal dialysis
SLED:	Sustained low-efficiency dialysis
TNF- α :	Tumor necrosis factor- α
IL-6:	Interleukin-6
ITT:	Intention-to-treat
IV:	Intravenous injection
HO-1:	Heme oxygenase-1
MDA:	Malondialdehyde
SOD:	Superoxide dismutase
HCG:	Human chorionic gonadotropin
EI:	Efficacy indicator
CRFs:	Case report forms
FAS:	Full analysis set
DMC:	Data monitoring committee
SAEs:	Serious adverse events.

Data Availability

It is not applicable for the submitted manuscript to share primary data as databases have not been established or analyzed during this present period. Further information unaddressed would be accessible from the corresponding author after the trial is completed.

Ethical Approval

The protocol has been approved by the Ethics Committee of the Shanghai Municipal Hospital of Traditional Chinese Medicine (reference number 2020SHL-KYYS-60) and other ethics committees at each center. Based on the Declaration of Helsinki, participants cannot be enrolled in the trial until written informed consents are obtained.

Disclosure

The funders had no role in the study design, data collection, and data analyses. The funders were also not involved in the manuscript preparation and decision to publish the final experimental data. Future trial publication or presentation will be published in a peer-reviewed journal or presented at academic conferences. All participants contributing substantively to the

trial are recognized in the form of granting authorship. Professional authors are not necessary.

Conflicts of Interest

The authors declare that they have no potential competing interests.

Authors' Contributions

XZG is the principal investigator in charge of this trial program. He designed the whole trial protocol and coordinated personnel and facilities from all aspects. In addition, he participated in, supervised, and took responsibility for the smooth progress of the whole program. LC participated in the registration of the trial and the drafting of the manuscript and will assist in the smooth implementation of subsequent trial program. All authors participated in the drafting, revision, and final review of the manuscript.

Acknowledgments

The authors are very grateful to all staff and funders for their hard work on this protocol. This study was supported by grants from the National Natural Science Foundation of China (Nos. 82074387 and 81873280) and the Traditional Chinese Medicine Guidance Project of Shanghai Science and Technology Commission (No. 20Y21902200).

Supplementary Materials

S1: ethical approval document. S2: SPIRIT 2013 Checklist. S3: copy of the original funding document. S4: original version of the informed consent document. (*Supplementary Materials*)

References

- [1] K. Makris and L. Spanou, "Acute kidney injury: definition, pathophysiology and clinical phenotypes," *Clinical Biochemist Reviews*, vol. 37, no. 2, pp. 85–98, 2016.
- [2] Kidney Disease: Improving Global Outcomes (KDIGO) Acute Kidney Injury Work Group, "KDIGO clinical practice guideline for acute kidney injury," *Kidney International Supplements*, vol. 2, pp. 1–138, 2012.
- [3] S. Sawhney and S. D. Fraser, "Epidemiology of AKI: utilizing large databases to determine the burden of AKI," *Advances in Chronic Kidney Disease*, vol. 24, no. 4, pp. 194–204, 2017.
- [4] S. M. Bagshaw and R. Wald, "Starting kidney replacement therapy in critically III patients with acute kidney injury," *Critical Care Clinics*, vol. 37, no. 2, pp. 409–432, 2021.
- [5] D. J. Cooper, K. Plewes, M. J. Grigg et al., "The effect of regularly dosed paracetamol versus no paracetamol on renal function in Plasmodium knowlesi malaria (PACKNOW): study protocol for a randomised controlled trial," *Trials*, vol. 19, no. 1, p. 250, 2018.
- [6] D. Collister, N. Pannu, F. Ye et al., "Health care costs associated with AKI," *Clinical Journal of the American Society of Nephrology*, vol. 12, no. 11, pp. 1733–1743, 2017.
- [7] H. S. Kang and S. X. Lin, "Clinical analysis of integrated traditional Chinese and western medicine in treating chronic kidney disease with acute kidney injury," *Smart Healthcare*, vol. 4, no. 17, pp. 56–57, 2018.
- [8] C. X. Dong and L. Yang, "Epidemiology of AKI: incidence of AKI, patient mortality, and renal mortality," *Chinese Journal of Blood Purification*, vol. 16, no. 1, pp. 8–10, 2017.
- [9] A. Khwaja, "KDIGO clinical practice guidelines for acute kidney injury," *Nephron Clinical Practice*, vol. 120, no. 4, pp. c179–84, 2012.
- [10] L. Yang, G. Xing, L. Wang et al., "Acute kidney injury in China: a cross-sectional survey," *The Lancet*, vol. 386, no. 10002, pp. 1465–1471, 2015.
- [11] E. Peters, M. Antonelli, X. Wittebole et al., "A worldwide multicentre evaluation of the influence of deterioration or improvement of acute kidney injury on clinical outcome in critically ill patients with and without sepsis at ICU admission: results from the Intensive Care over Nations audit," *Critical Care*, vol. 22, no. 1, p. 188, 2018.
- [12] S. K. Sethi, R. Chakraborty, H. Joshi, and R. Raina, "Renal replacement therapy in pediatric acute kidney injury," *Indian Journal of Pediatrics*, vol. 87, no. 8, pp. 608–617, 2020.
- [13] J. A. Kellum and C. Ronco, "The 17th acute disease quality initiative international consensus conference: introducing precision renal replacement therapy," *Blood Purification*, vol. 42, no. 3, pp. 221–223, 2016.
- [14] M. Meersch, M. Küllmar, C. Schmidt et al., "Long-term clinical outcomes after early initiation of RRT in critically ill patients with AKI," *Journal of the American Society of Nephrology*, vol. 29, no. 3, pp. 1011–1019, 2018.
- [15] X. Z. Gong, X. C. Tang, and Q. Wang, "Observe the clinical efficacy of Chuanhuang decoction combined with lipo PGE1 in treating acute kidney injury (AKI) on phase 2~4 chronic kidney disease (CKD) patients," *Chin J Integr Trad West Med Nephrol*, vol. 15, no. 9, pp. 784–787, 2014.
- [16] K. M. Soliman, R. C. Campbell, T. Fülöp, T. Goddard, and R. Pisoni, "Acute kidney injury in subjects with chronic kidney disease undergoing total joint arthroplasty," *The American Journal of the Medical Sciences*, vol. 358, no. 1, pp. 45–50, 2019.
- [17] A. Navaratnarajah, A. Bhan, E. Alcock et al., "Systemic inflammation and oxidative stress contribute to acute kidney injury after transcatheter aortic valve implantation," *Journal of Cardiology*, 2020.
- [18] A. Zarbock, J. Gerß, H. Van Aken, A. Boanta, J. A. Kellum, and M. Meersch, "Early versus late initiation of renal replacement therapy in critically ill patients with acute kidney injury (The ELAIN-Trial): study protocol for a randomized controlled trial," *Trials*, vol. 17, no. 1, p. 148, 2016.
- [19] K. D. Liu, S. L. Goldstein, A. Vijayan et al., "AKI!Now initiative: recommendations for awareness, recognition, and management of AKI," *Clinical Journal of the American Society of Nephrology*, vol. 15, no. 12, pp. 1838–1847, 2020.
- [20] A. Grivei, K. T. K. Giuliani, X. Wang et al., "Oxidative stress and inflammasome activation in human rhabdomyolysis-induced acute kidney injury," *Free Radical Biology and Medicine*, vol. 160, pp. 690–695, 2020.
- [21] L. M. A. Barnett and B. S. Cummings, "Nephrotoxicity and renal pathophysiology: a contemporary perspective," *Toxicological Sciences*, vol. 164, no. 2, pp. 379–390, 2018.
- [22] E. Ruedig and T. E. Johnson, "An evaluation of health risk to the public as a consequence of in situ uranium mining in Wyoming, USA," *Journal of Environmental Radioactivity*, vol. 150, pp. 170–178, 2015.
- [23] X. Z. Gong, Y. R. Wang, and D. Fu, "Effects of zhidahuang-chuanxiong drug pair on tubular epithelial cell apoptosis in

- contrast-induced nephropathy rats,” *Chinese Journal of Integrative Medicine Nephrology*, vol. 13, no. 8, pp. 675–677, 2012.
- [24] H.-D. Li, X.-M. Meng, C. Huang, L. Zhang, X.-W. Lv, and J. Li, “Application of herbal traditional Chinese medicine in the treatment of acute kidney injury,” *Frontiers in Pharmacology*, vol. 10, p. 376, 2019.
- [25] X. C. Tang, X. Z. Gong, and Q. Wang, “Experiences of professor Gong Xuezhong in treating acute kidney injury on chronic kidney disease based on toxicity and blood stasis,” *Shenzhen J Integr Trad Chin West Med*, vol. 25, no. 17, pp. 40–42, 2015.
- [26] X. Z. Gong, Y. R. Duan, and Y. Wang, “Effects of Chuanhuang Decoction on renal function and oxidative stress in patients of chronic kidney disease at stage 2-4 complicated with acute kidney injury,” *Journal of Shanghai Traditional Chinese Medical Sciences*, vol. 34, no. 1, pp. 11–16, 2020.
- [27] X. Z. Gong, Z. Ye, and X. N. Xu, “Effects of Chuanhuang Formula combined with prostaglandin E1 in treating patients of chronic kidney disease complicated with acute kidney injury and its influence on NLRP3,” *Journal of Shanghai Traditional Chinese Medical Sciences*, vol. 35, no. 06, pp. 12–16, 2021.
- [28] S. J. Han and H. T. Lee, “Mechanisms and therapeutic targets of ischemic acute kidney injury,” *Kidney Research and Clinical Practice*, vol. 38, no. 4, pp. 427–440, 2019.
- [29] W. M. Wang and Y. Wu, “Clinical effect of reduced glutathione combined with jinshuibao in the treatment of acute renal injury,” *Guide of China Medicine*, vol. 19, no. 24, pp. 7–9, 2021.
- [30] L. Zhang and L. Bai, “Therapeutic effect of Reduced Glutathione on acute kidney injury in patients with sepsis,” *Chinese Modern Medicine*, vol. 26, no. 9, pp. 54–60, 2019.
- [31] A. Matsubara, S. Oda, R. Jia, and T. Yokoi, “Acute kidney injury model established by systemic glutathione depletion in mice,” *Journal of Applied Toxicology*, vol. 39, no. 6, pp. 919–930, 2019.
- [32] F. Yang, J. H. Tong, and H. Li, “Effects of reduced glutathione combined with high-flux hemodialysis on serum CysC, KIM-1 and Scr in patients with acute kidney injury,” *West China Medical Journal*, vol. 32, no. 6, pp. 863–867, 2020.
- [33] D. J. Hu, “Reduced glutathione with high flux hemodialysis therapy of acute renal injury in clinical study,” *J Clin Nephrol*, vol. 15, no. 1, pp. 39–41, 2015.
- [34] World Medical Association, “World Medical Association Declaration of Helsinki: ethical principles for medical research involving human subjects,” *JAMA*, vol. 310, no. 20, pp. 2191–2194, 2013.
- [35] Good Clinical Practice 2013 [https://www.nmpa.gov.cn/xxgk/fgwj/bmgzh/200308060101471_01443.html].
- [36] Shanghai Clinical Quality Control Center of Nephrology Department, *Shanghai Nephrology Department Quality Control Manual*, Shanghai Science and Technology Press, Shanghai, China, 2017.
- [37] Kidney Disease: Improving Global Outcomes (KDIGO) Chronic Kidney Disease Work Group, “KDIGO 2012 clinical practice guideline for the evaluation and management of chronic kidney disease,” *Kidney Int Suppl*, vol. 3, no. 1, pp. 1–150, 2013.
- [38] Y. Y. Zheng, *Guidelines for Clinical Research of Chinese Medicine (New Drug)*, Chinese Medicine and Science Publication House, Beijing, China, 2002.
- [39] L. Q. He, “Diagnosis, syndrome differentiation and efficacy evaluation of chronic renal failure (trial protocol),” *Shanghai Journal of Traditional Chinese Medicine*, vol. 40, no. 8, pp. 8–9, 2006.
- [40] L. He, Q. Wei, J. Liu et al., “AKI on CKD: heightened injury, suppressed repair, and the underlying mechanisms,” *Kidney International*, vol. 92, no. 5, pp. 1071–1083, 2017.
- [41] I. Acosta-Ochoa, J. Bustamante-Munguira, and A. Mendiluce-Herrero, “Impact on outcomes across KDIGO-2012 AKI criteria according to baseline renal function,” *Journal of Clinical Medicine*, vol. 8, no. 9, 2019.
- [42] S. Norgren and X.-z. Gong, “Contrast-induced nephropathy-time for Western medicine and Chinese medicine to team up,” *Chinese Journal of Integrative Medicine*, vol. 24, no. 1, pp. 3–5, 2018.
- [43] X. Gong, Y. Duan, J. Zheng, Z. Ye, and T. K. Hei, “Tetramethylpyrazine prevents contrast-induced nephropathy via modulating tubular cell mitophagy and suppressing mitochondrial fragmentation, CCL2/CCR2-mediated inflammation, and intestinal injury,” *Oxidative Medicine and Cellular Longevity*, vol. 2019, Article ID 7096912, 12 pages, 2019.
- [44] X.-Z. Gong, “Chinese medicine might be a promising way for a solution to arsenic nephrotoxicity,” *Chinese Journal of Integrative Medicine*, vol. 26, no. 2, pp. 83–87, 2020.
- [45] X.-Z. Gong, “Recent advances in Chinese medicine for contrast-induced nephropathy,” *Chinese Journal of Integrative Medicine*, vol. 24, no. 1, pp. 6–9, 2018.
- [46] X. Gong, V. N. Ivanov, and T. K. Hei, “2,3,5,6-Tetramethylpyrazine (TMP) down-regulated arsenic-induced heme oxygenase-1 and ARS2 expression by inhibiting Nrf2, NF- κ B, AP-1 and MAPK pathways in human proximal tubular cells,” *Archives of Toxicology*, vol. 90, no. 9, pp. 2187–2200, 2016.
- [47] X. Gong, V. N. Ivanov, M. M. Davidson, and T. K. Hei, “Tetramethylpyrazine (TMP) protects against sodium arsenite-induced nephrotoxicity by suppressing ROS production, mitochondrial dysfunction, pro-inflammatory signaling pathways and programmed cell death,” *Archives of Toxicology*, vol. 89, no. 7, pp. 1057–1070, 2015.
- [48] P. K. Moore, R. K. Hsu, and K. D. Liu, “Management of acute kidney injury: core curriculum 2018,” *American Journal of Kidney Diseases*, vol. 72, no. 1, pp. 136–148, 2018.
- [49] M. Ostermann, K. Liu, and K. Kashani, “Fluid management in acute kidney injury,” *Chest*, vol. 156, no. 3, pp. 594–603, 2019.