

CORRECTION

Open Access



Correction: Utility of support vector machine and decision tree to identify the prognosis of metformin poisoning in the United States: analysis of National Poisoning Data System

Omid Mehrpour^{1,2*}, Farhad Saeedi^{3,4}, Christopher Hoyte^{4,5}, Foster Goss^{6,7} and Farshad M. Shirazi⁸

Correction: BMC Pharmacol Toxicol 23, 49 (2022)
<https://doi.org/10.1186/s40360-022-00588-0>

Following publication of the original article [1], the authors identified some errors in Figs. 1, 2, 3, 4, 5 and 6. The correct figures are given below.

The original article [1] has been corrected.

analysis of National Poisoning Data System. BMC Pharmacol Toxicol. 2022;23:49. <https://doi.org/10.1186/s40360-022-00588-0>.

Author details

¹Data Science Institute, Southern Methodist University, Dallas, TX, USA. ²Rocky Mountain Poison & Drug Safety, Denver Health and Hospital Authority, Denver, CO, USA. ³Medical Toxicology and Drug Abuse Research Center (MTDRC, Birjand University of Medical Sciences (BUMS), Birjand, Iran. ⁴Student Research Committee, Birjand University of Medical Sciences, Birjand, Iran. ⁵University of Colorado Anschutz Medical Campus, Aurora, CO, USA. ⁶University of Colorado Hospital, Aurora, CO, USA. ⁷Department of Emergency Medicine, University of Colorado Hospital, Aurora, CO, USA. ⁸Arizona Poison & Drug Information Center, the University of Arizona, College of Pharmacy and University of Arizona, College of Medicine, Tucson, AZ, USA.

Published online: 09 September 2022

Reference

1. Mehrpour O, et al. Utility of support vector machine and decision tree to identify the prognosis of metformin poisoning in the United States:

The original article can be found online at <https://doi.org/10.1186/s40360-022-00588-0>.

*Correspondence: omehrpour@smu.edu

² Rocky Mountain Poison & Drug Safety, Denver Health and Hospital Authority, Denver, CO, USA

Full list of author information is available at the end of the article



© The Author(s) 2022. **Open Access** This article is licensed under a Creative Commons Attribution 4.0 International License, which permits use, sharing, adaptation, distribution and reproduction in any medium or format, as long as you give appropriate credit to the original author(s) and the source, provide a link to the Creative Commons licence, and indicate if changes were made. The images or other third party material in this article are included in the article's Creative Commons licence, unless indicated otherwise in a credit line to the material. If material is not included in the article's Creative Commons licence and your intended use is not permitted by statutory regulation or exceeds the permitted use, you will need to obtain permission directly from the copyright holder. To view a copy of this licence, visit <http://creativecommons.org/licenses/by/4.0/>. The Creative Commons Public Domain Dedication waiver (<http://creativecommons.org/publicdomain/zero/1.0/>) applies to the data made available in this article, unless otherwise stated in a credit line to the data.

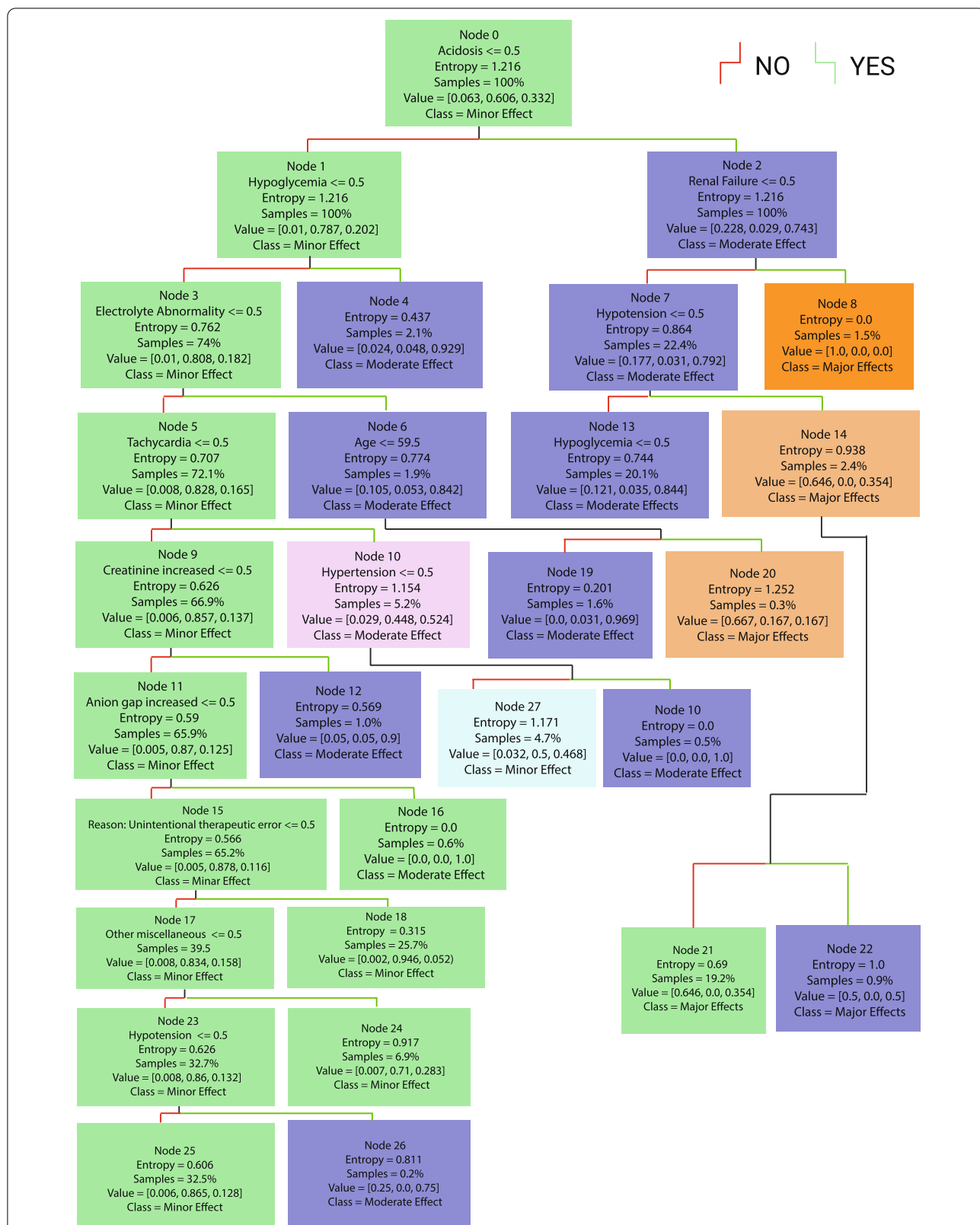


Fig. 1 Decision Tree Model1

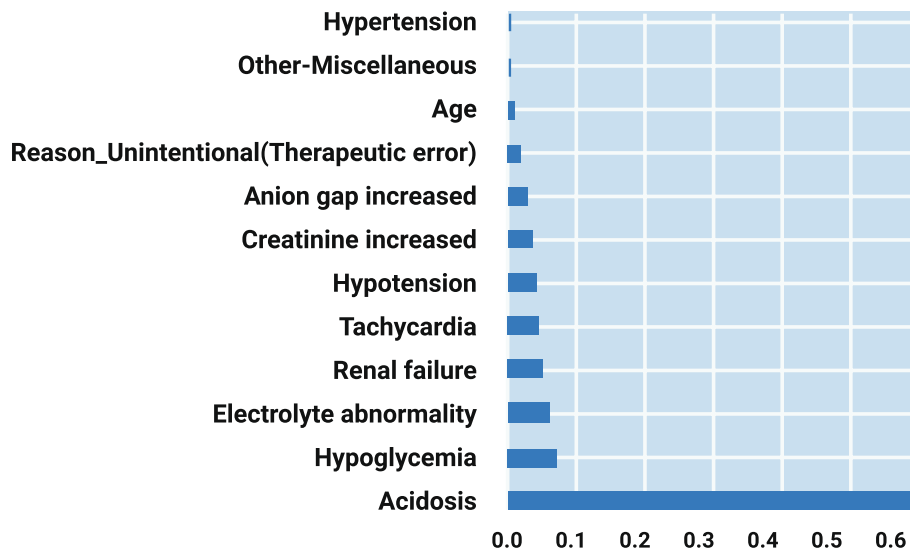


Fig. 2 Important Features Based on Decision Tree Algorithm

Precision-Recall Curve for Decision Tree Classifier

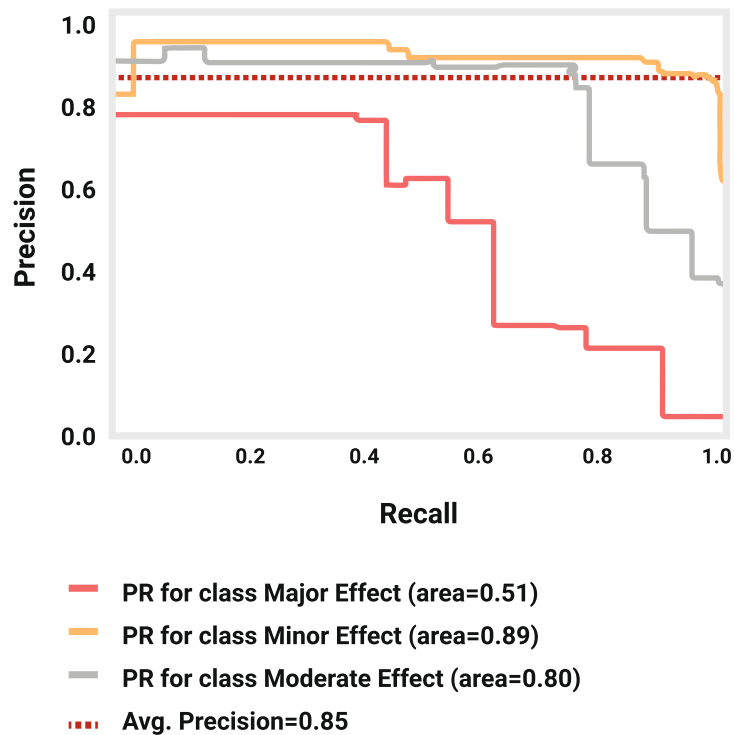
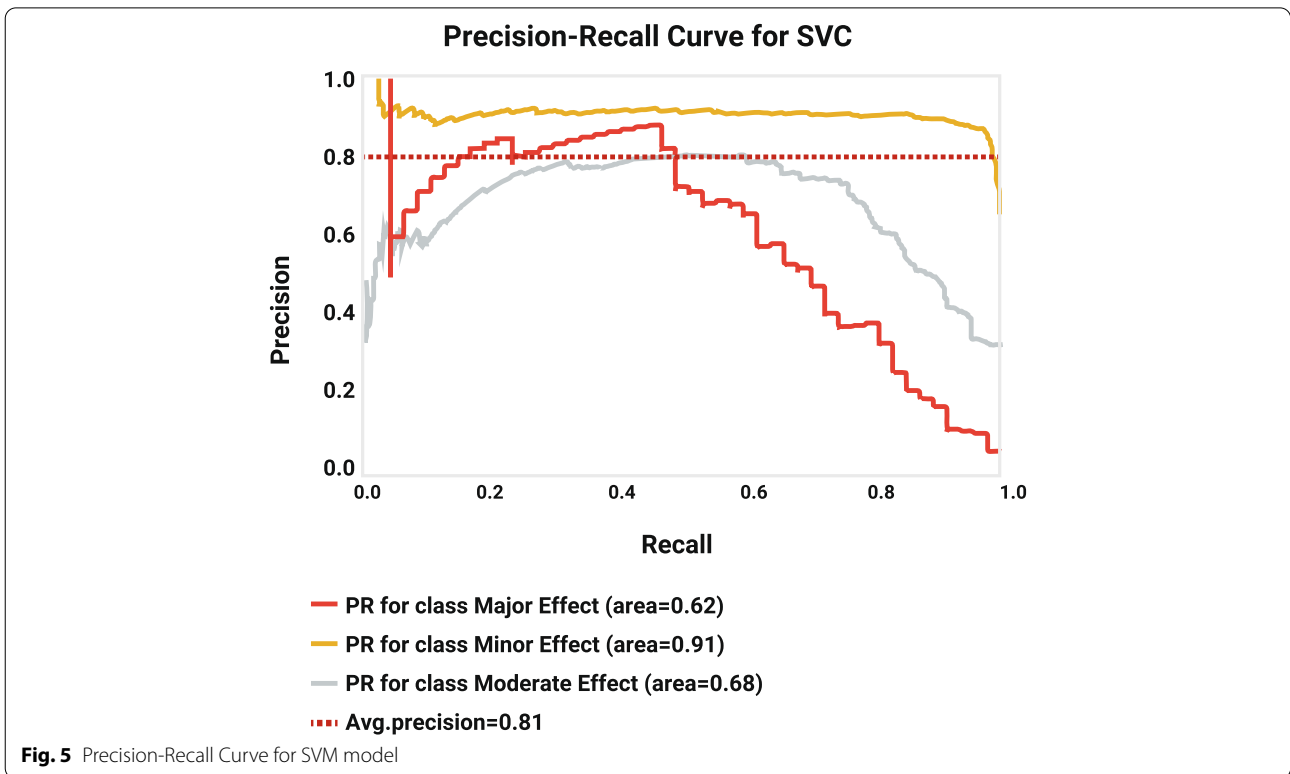
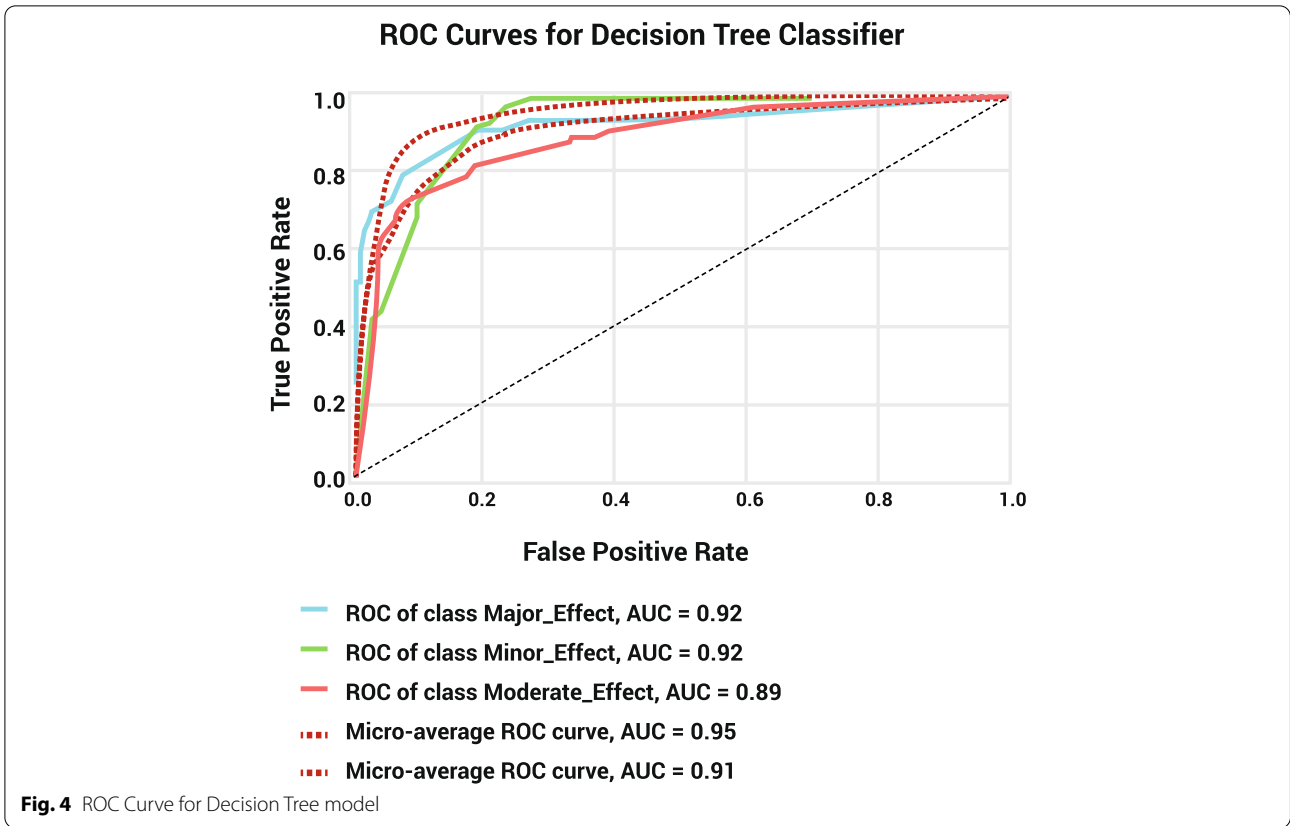


Fig. 3 Precision-Recall Curve for Decision Tree model



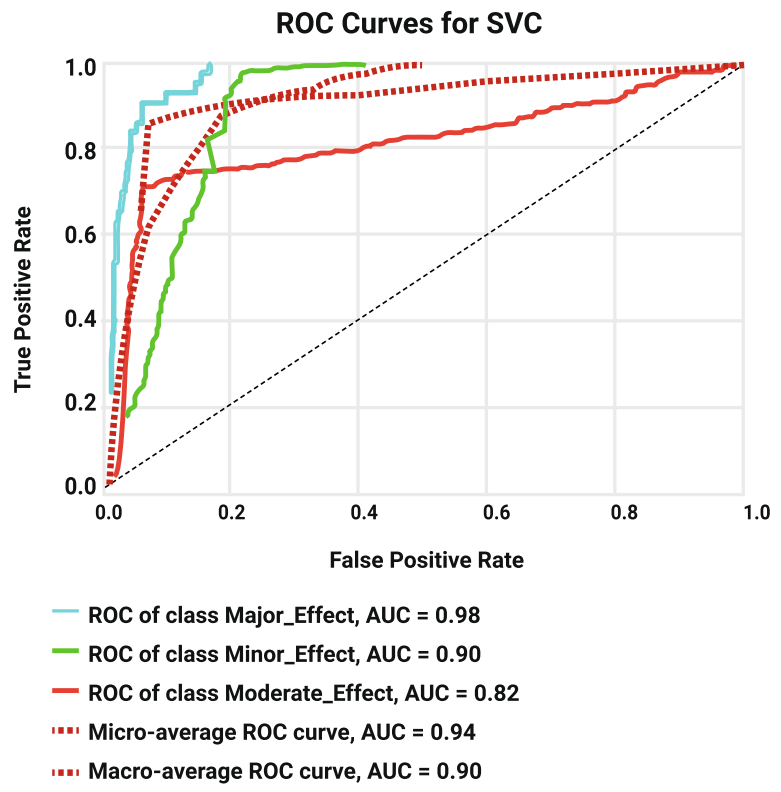


Fig. 6 ROC Curve for SVM modell