

WALKING POSTER PRESENTATION

Open Access

Transmural gradients of preferential diffusion motility in the normal rat myocardium characterized by diffusion tensor imaging

Archontis Giannakidis^{1,2*}, Pedro Ferreira^{1,2}, Grant T Gullberg^{3,4}, David Firmin^{1,2}, Dudley J Pennell^{1,2}

From 18th Annual SCMR Scientific Sessions
Nice, France. 4-7 February 2015

Background

In recent years, diffusion tensor imaging (DTI) has emerged as a powerful noninvasive tool that infers the cardiac tissue organization through measuring water molecule motility.[1] Previous DTI studies [2] on normal hearts largely assumed that the measured diffusion magnitude along the 3 preferred directions and the measured degree of diffusion anisotropy remain the same over the endo-, meso-, and epi-cardial layers of the left ventricular (LV) wall. Our goal is to test the validity of this assumption.

Methods

MRI

DTI of 6 excised Wistar Kyoto rat hearts was performed on a 7T Bruker BioSpec using a 3D spin echo sequence with 12 optimized [3] diffusion directions at $b=1000\text{ s/mm}^2$ (+ b_0) with $160\mu\text{m}$ isotropic resolution.

Data analysis

Tensor data was fitted [4] and diagonalized on a pixel-by-pixel basis. Maps of fractional anisotropy (FA), and longitudinal (λ_L), transverse (λ_T) and mean (MD) diffusivities were computed. The equatorial short-axis slice with the largest area was analysed. 3 transmural sectors were defined evenly spanning the LV wall (Fig 1a). Zonal averages for all parameters were computed. To test the statistical significance of the differences among the zonal averages, one-way ANOVA was employed.

Results

Distinct transmural gradients were observed (Fig 1b) in all measurements. Even though the exact mechanisms are still not perfectly understood, the measured extracellular diffusivity properties are, intuitively, sensitive to local cellular characteristics. Since the primary eigenvector is aligned to the cell long-axis, the revealed increase trend ($p<0.05$) of λ_L from the endo- to the epi-cardium is consistent with previous studies [5] on isolated LV myocytes that showed a similar trend in the cell length. The rises in measured extracellular λ_T ($p<0.05$) and MD ($p<0.05$) from the inner to the outer wall layers may be explained by the documented [6] reverse trend in the inversely proportional cell cross-sectional area. On similar grounds, the decrease in FA ($p<0.05$) from endo- to epi-cardium is in agreement with the manifested⁵ reverse trend in the cell length/width ratio.

Conclusions

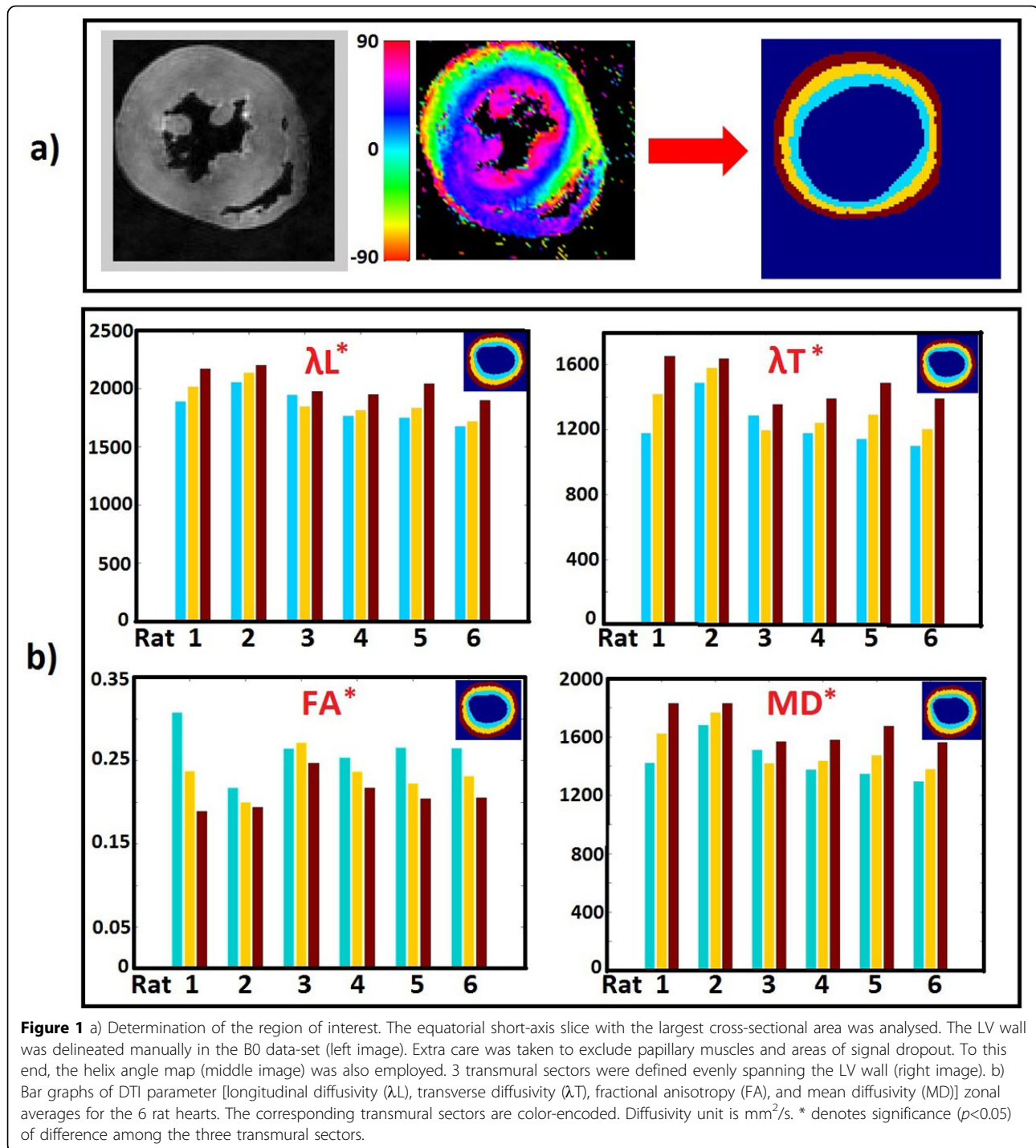
Significant transmural heterogeneity of preferential diffusion properties was observed in the normal rat myocardium. The results corroborate previous labor-intensive cellular morphometry studies on the same animal model. They may be used to improve our understanding of the heart functioning through dissecting critical underlying mechanisms.

Funding

NIHR Cardiovascular BRU, Royal Brompton & Harefield NHS Trust and Imperial College London. NIH:R01 EB007219, the Director, SC, BER, Medical Sciences Division, U.S. DOE under Contract DE-AC02-05CH11231.

¹NIHR Cardiovascular Biomedical Research Unit, Royal Brompton Hospital, London, UK

Full list of author information is available at the end of the article



Authors' details

¹NIHR Cardiovascular Biomedical Research Unit, Royal Brompton Hospital, London, UK. ²National Heart and Lung Institute, Imperial College London, London, UK. ³Life Sciences Division, Lawrence Berkeley National Laboratory, Berkeley, CA, USA. ⁴Radiology and Biomedical Imaging, University California San Francisco, San Francisco, CA, USA.

References

1. Hsu, et al: *Am J Physiol Heart Circ Physiol* 1998, **274**:H1627.
2. Chen, et al: *Am J Physiol Heart Circ Physiol* 2005, **289**:H1898.
3. Papadakis, et al: *J Magn Reson* 1999, **137**:67.
4. Koay, et al: *J Magn Reson* 2006, **182**:115.
5. McCrossan, et al: *Cardiovasc Res* 2004, **63**:283.
6. Gerdes, et al: *Am J Anat* 1979, **156**:523.

doi:10.1186/1532-429X-17-S1-Q117

Cite this article as: Giannakidis *et al.*: Transmural gradients of preferential diffusion motility in the normal rat myocardium characterized by diffusion tensor imaging. *Journal of Cardiovascular Magnetic Resonance* 2015 **17**(Suppl 1):Q117.

**Submit your next manuscript to BioMed Central
and take full advantage of:**

- Convenient online submission
- Thorough peer review
- No space constraints or color figure charges
- Immediate publication on acceptance
- Inclusion in PubMed, CAS, Scopus and Google Scholar
- Research which is freely available for redistribution

Submit your manuscript at
www.biomedcentral.com/submit

