

RESEARCH ARTICLE

Open Access

# FixJ family regulator AcfR of *Azorhizobium caulinodans* is involved in symbiosis with the host plant



Wei Liu<sup>1,2,3</sup>, Xue Bai<sup>1</sup>, Yan Li<sup>1,2,3</sup>, Haikun Zhang<sup>1,2,3</sup> and Xiaoke Hu<sup>1,2,3\*</sup>

## Abstract

**Background:** A wide variety of bacterial adaptive responses to environmental conditions are mediated by signal transduction pathways. Two-component signal transduction systems are one of the predominant means used by bacteria to sense the signals of the host plant and adjust their interaction behaviour. A total of seven open reading frames have been identified as putative two-component response regulators in the gram-negative nitrogen-fixing bacteria *Azorhizobium caulinodans* ORS571. However, the biological functions of these response regulators in the symbiotic interactions between *A. caulinodans* ORS571 and the host plant *Sesbania rostrata* have not been elucidated to date.

**Results:** In this study, we identified and investigated a two-component response regulator, AcfR, with a phosphorylatable N-terminal REC (receiver) domain and a C-terminal HTH (helix-turn-helix) LuxR DNA-binding domain in *A. caulinodans* ORS571. Phylogenetic analysis showed that AcfR possessed close evolutionary relationships with NarL/FixJ family regulators. In addition, six histidine kinases containing HATPase\_c and HisKA domains were predicted to interact with AcfR. Furthermore, the biological function of AcfR in free-living and symbiotic conditions was elucidated by comparing the wild-type strain and the  $\Delta acfR$  mutant strain. In the free-living state, the cell motility behaviour and exopolysaccharide production of the  $\Delta acfR$  mutant were significantly reduced compared to those of the wild-type strain. In the symbiotic state, the  $\Delta acfR$  mutant showed a competitive nodule defect on the stems and roots of the host plant, suggesting that AcfR can provide *A. caulinodans* with an effective competitive ability for symbiotic nodulation.

**Conclusions:** Our results showed that AcfR, as a response regulator, regulates numerous phenotypes of *A. caulinodans* under the free-living conditions and in symbiosis with the host plant. The results of this study help to elucidate the involvement of a REC + HTH\_LuxR two-component response regulator in the *Rhizobium*-host plant interaction.

**Keywords:** Two-component response regulator, REC domain, HTH\_LuxR domain, Bacterial motility, Exopolysaccharides, Competitive nodulation

\* Correspondence: [xkhu@yic.ac.cn](mailto:xkhu@yic.ac.cn)

<sup>1</sup>Key Laboratory of Coastal Biology and Bioresource Utilization, Yantai Institute of Coastal Zone Research, Chinese Academy of Sciences, Yantai 264003, China

<sup>2</sup>Laboratory for Marine Biology and Biotechnology, Qingdao National Laboratory for Marine Science and Technology, Qingdao 266237, China

Full list of author information is available at the end of the article



© The Author(s). 2021 **Open Access** This article is licensed under a Creative Commons Attribution 4.0 International License, which permits use, sharing, adaptation, distribution and reproduction in any medium or format, as long as you give appropriate credit to the original author(s) and the source, provide a link to the Creative Commons licence, and indicate if changes were made. The images or other third party material in this article are included in the article's Creative Commons licence, unless indicated otherwise in a credit line to the material. If material is not included in the article's Creative Commons licence and your intended use is not permitted by statutory regulation or exceeds the permitted use, you will need to obtain permission directly from the copyright holder. To view a copy of this licence, visit <http://creativecommons.org/licenses/by/4.0/>. The Creative Commons Public Domain Dedication waiver (<http://creativecommons.org/publicdomain/zero/1.0/>) applies to the data made available in this article, unless otherwise stated in a credit line to the data.

## Background

The alphaproteobacterium *Azorhizobium caulinodans* ORS571, as a gram-negative nitrogen-fixing bacterium, has the dual ability to fix nitrogen both under free-living conditions and in a symbiotic interaction with the tropical legume *Sesbania rostrata*, which forms both stem nodules and root nodules [1]. The nitrogen-fixing symbiosis of soil bacteria with legume plants is a multistep process that involves an exchange of signals between compatible partners. Host plants signal compounds, which are released by induced rhizobial cells, induce the curling of root hairs. Next, rhizobial cells attach to root hairs and begin to infect root tissue. Subsequently, bacterial cells are released into plant cells, where they divide into bacteroids that will eventually return atmospheric nitrogen to ammonia [2]. The interaction between rhizobia and the host is initiated by a complex molecular dialogue.

Bacteria possess various signalling systems that enable them to sense and respond to diverse signals from external environmental conditions. Two-component system (TCS), a major type of cellular signal transduction system, are widely used by bacteria to sense and adjust their behaviour according to environmental changes [3]. TCS plays major role in a wide range of adaptive mechanisms, such as host-pathogen interactions, symbiotic interactions, intracellular signaling, metabolism, notably in response to stress conditions, and motility [4]. The canonical TCS comprises a sensor histidine kinase (HK) and a cytoplasmic response regulator (RR). Typical HKs contain a transmembrane domain and intracellular domain. Generally, the intracellular component has two obvious domains: the histidine-associated ATPase, C-terminal (HATPase\_c) and the histidine kinase acceptor (HisKA). HK responds to received signals or stimuli and undergoes autophosphorylation on a conserved histidine residue. Next, the phosphate group is transferred to a conserved aspartate in the N-terminal receiver domain of the RR [5]. Phosphorylation of the RR occurs within the receiver domain and typically leads to cellular change by activating an output domain. RRs are classified into different groups according to protein domain organization. The LuxR family RRs contain a C-terminal HTH (helix-turn-helix) domain of approximately 65 amino acids, which can be activated by different mechanisms. QS (quorum sensing) LuxR regulators (such as *Vibrio fischeri* luxR and *Agrobacterium tumefaciens* traR) are activated when they bind to N-acyl homoserine lactones [6, 7]. The NarL/FixJ family RRs are the second most abundant family of bacteria [8] and have a typical HTH DNA-binding output domain that is similar to the QS LuxR family. *Sinorhizobium meliloti* FixJ [9], *Escherichia coli* NarL [10], UhpA [11], and *Enterobacteria* RcsB belong to this category. Other types of RRs contain

autonomous effector domains but do not have a regulatory domain (GerE) [12] or multiple ligand-binding domains (MalT) [13].

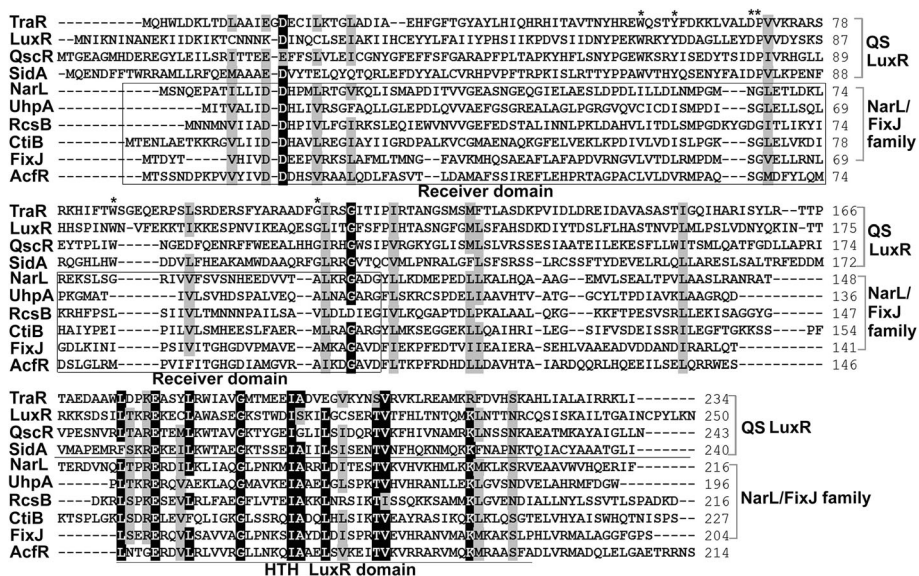
In the symbiotic bacterium *S. meliloti*, FixJ contains a phosphorylatable N-terminal REC domain and a C-terminal HTH\_LuxR DNA-binding domain. FixJ, the oxygen-sensitive two-component response regulator, plays a pivotal role in symbiotic nitrogen fixation in *S. meliloti*. FixJ is a positive activator required for the regulation of nitrogen-fixing gene transcription [9]. Genome analysis of *A. caulinodans* ORS571 (<https://www.ncbi.nlm.nih.gov/>) suggested the existence of a FixJ family response regulator AcfR (*A. caulinodans* fixJ family regulator) that contains a REC domain in the N-terminus and an HTH\_LuxR domain in the C-terminus. In this work, we elucidated the potential role played by AcfR in *A. caulinodans* under free-living and symbiotic conditions.

## Results

### AcfR is a REC + HTH\_LuxR response regulator of the NarL/FixJ family

To identify AcfR (WP\_012168725), we analysed the domain architecture and phylogenetic relationship of AcfR and some proteins containing an HTH DNA-binding domain. First, the protein sequence was entered in SMART (<http://smart.embl.de/>), which indicated that it contains an N-terminal signal receiver domain REC (SM00448) and an HTH\_LuxR DNA-binding domain (SM00421) (Supplemental Fig. 1a). Second, the amino acid sequences of AcfR and some well-studied proteins containing the HTH\_LuxR DNA-binding domain were aligned by BioEdit software. As shown in Fig. 1, LuxR-type proteins contained highly conserved HTH\_LuxR domains and C-terminal autoinducer-binding domains (six conserved amino acid residues). However, AcfR and the other types of HTH\_LuxR proteins (FixJ, NarL, UhpA, RcsB, and CitB) contain the REC domain and HTH\_LuxR domain.

Furthermore, the evolutionary relationship between AcfR and several proteins that contain REC + HTH\_LuxR domains was analysed. For phylogenetic reconstruction, these proteins were aligned with the ClustalW program and the phylogenetic tree was created with MEGA-X software by the neighbor-joining method. As shown in Fig. 2, AcfR was grouped into a cluster with NarL/FixJ family response regulators. The typical QS regulator LuxR of *Vibrio fischeri* served as an outgroup. These NarL/FixJ family proteins shared the signal receiver domain REC in the N-terminus and the HTH\_LuxR domain in the C-terminus. Furthermore, the amino acid sequences of AcfR and FixJ family regulators were aligned (Fig. 3). Amino acid sequence analysis showed that the similarity between AcfR and response regulator (RR) of *Azorhizobium* sp. (WP\_133864704),



**Fig. 1** Multiple sequences alignment of AcfR and other HTH\_LuxR response regulators of LuxR/FixJ subfamily. The selected QS LuxR-type sequences include *A. tumefaciens* TraR, *V. fischeri* LuxR, *Pseudomonas aeruginosa* QscR, and *Salmonella enterica* SidA. The selected NarL/FixJ family regulators include *E. coli* NarL and RcsB, *Salmonella typhimurium* UhpA, *Methylobacterium inflorum* CitB, and *S. meliloti* FixJ. Alignment was performed using BioEdit software. Completely conserved amino acids are shown on a black background. 80% conservation are indicated by a dark-grey background. Asterisks indicate six conserved residues in autoinducer binding domains of AHL-QS LuxRs, and the C terminal HTH domain is underlined. The receiver domain is shown in a rectangular box

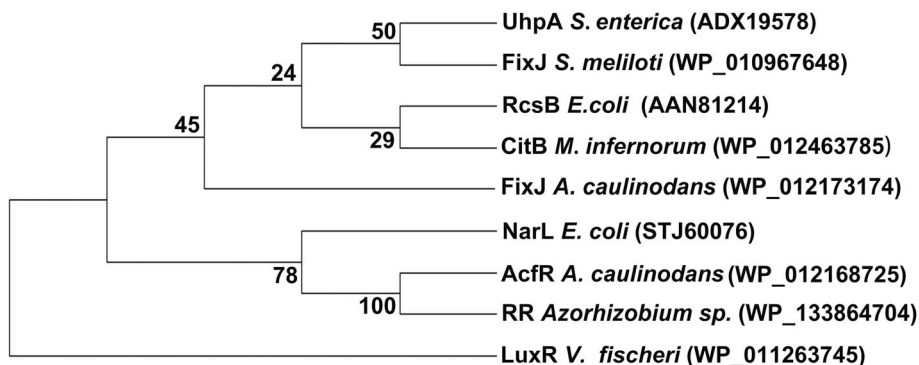
FixJ of *S. meliloti* and *A. caulinodans* ORS571 was 97.20, 41.20, 44.02%, respectively. These results suggested that AcfR belongs to the FixJ family of two-component response regulators.

To elucidate understand the biological function of AcfR, a protein-protein interaction network was constructed using the STRING database (<https://string-db.org/>) [14]. As shown in Supplementary Fig. 1b, a total of 8 proteins were predicted to interact with AcfR in the genome of *A. caulinodans*, including FixL, two AAA family ATPase proteins, two PAS domain S-box proteins, a two-component sensor histidine kinase, a GHKL

domain-containing protein, and a magnesium-translocating P-type ATPase. Interestingly, six of eight proteins were predicted to be histidine kinases with HisKA and HATPase\_c domains (Supplementary Fig. 2). These results suggested that AcfR, as an RR of the two-component regulatory system, may be involved in histidine kinase signal transduction.

**acfR mutation does not affect bacterial growth**

To further characterize the regulatory function of AcfR, we generated an *acfR* deletion mutant strain ( $\Delta acfR$ ) of *A. caulinodans* by gene homologous recombination and



**Fig. 2** Phylogenetic analysis of AcfR and proteins with conserved HTH\_LuxR and REC domains. The phylogenetic trees were constructed based on the amino acid sequence neighbor-joining algorithm by the MEG-X program, and the bootstrap test carried out with 1000 replicates. LuxR of *Vibrio fischeri* was selected as the outgroup the tree. Bootstrap values are included at the tree nodes

```

AcfR A. caulinodans MTSSNDPKPVVYIVDDHDSVRAALQDLFASVTLDAMAFSSIREFLEHPRTAGAPACIVLDV 60
RR Azorhizobium sp. MTSSNDPKPVVYIVDDHDSVRAALQDLFASVTLDAMAFSSIREFLEHPRTAGAACIVLDV 60
FixJ A. caulinodans MPES----LKVHVIDDDAVRSLAFLESSLGLAVTQHTSAAAFIDAGVPLDRGCIVITDV 56
FixJ S. meliloti MTD-----YTVHIVDDEEVRKSLAFMLTMNGFAVKMHCSAEAFIAFAPDVRNGVIVITDL 55

AcfR A. caulinodans RMPAQCSCMDFYLQMDSLGLRMPVLEITGHGDIAMGVFAIKDGAVDFLTKPFRDHLDDAV 120
RR Azorhizobium sp. RMPAQCSCMDFYLQMDSLGLRMPVLEITGHGDIAMGVFAIKDGAVDFLTKPFRDHLDDAV 120
FixJ A. caulinodans RMPGISCLELLKELNARGAHMAVIVMVGHDVPLAVFAAMKGAADFLKPFDDAAI IAVV 116
FixJ S. meliloti RMPDMSCVELLRNLGDLKINIPSLVITGHGCVPMAVEAMKAGAVDFIEKPFEDIVTIVEAI 115

AcfR A. caulinodans H-TAIARDQORLHQEEIILSELQRRWESINTGERDVLRLVVRGLINKQLAELSVKEITVK 179
RR Azorhizobium sp. H-TAIARDQORLHQEEIHSSELQRRWESINMGERDVLRLVVRGLINKQLAELSVKEITVK 179
FixJ A. caulinodans R-ASLGRSAEQGRQEDARSEVGRRIAGLSQRERDVECTVNGLANKTIAYDLGISPRITVE 175
FixJ S. meliloti ERASEHLVAEADVDDAN-DIRARFQTLSEERERDLSAVVAGLENKSLAYDLDISPRITVE 174

AcfR A. caulinodans VVRAVVMQRMRAASFAALVRMADQLELGAETRRNS- 214
RR Azorhizobium sp. VVRAVVMQRMRAASFAALVRMADQLELGAETRRNS- 214
FixJ A. caulinodans VVRANVMTRMRAASLPELVRMALLAGVAPADDATPT 211
FixJ S. meliloti VVRANVMTRMRAASLPELVRMALLAGGFGPS----- 204

```

**Fig. 3** Comparison of amino acid sequences. Alignment of AcfR and FixJ family response regulator (RR) of *Azorhizobium* sp., FixJ of *S. meliloti* and *A. caulinodans* was performed using BioEdit software. Completely conserved amino acids are shown on a black background. 80% residue conservation are indicated by a grey background

constructed its complemented strain ( $\Delta acfR$ -C). To confirm whether this mutation affects bacterial growth under normal conditions, the dynamic growth curves of the wild-type (WT), mutant, and complemented strains were tested at various stages of growth. The results indicated that the relative growth rates of the mutant and complemented strains were not significantly different from that of the WT strain (Supplementary Fig. 3), indicating that deletion of the *acfR* gene did not significantly affect the normal growth of bacteria.

#### AcfR regulated motility and exopolysaccharide production in free-living state

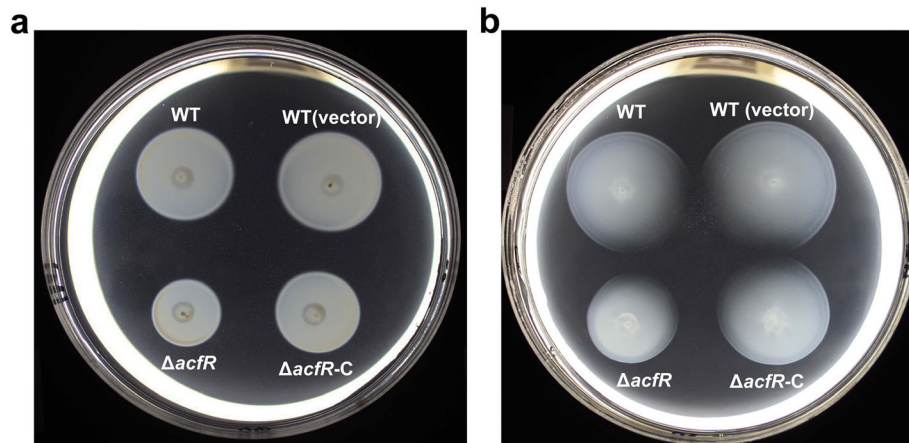
To further investigate the functions of AcfR in bacterial motility behaviour, the swimming activity of the WT, mutant ( $\Delta acfR$ ), and complemented ( $\Delta acfR$ -C) strains was tested on 0.3% soft agar plates. Bacterial cultures of these strains were inoculated in the middle of soft agar plates. The plates were incubated for 2–3 days at 37 °C. As shown in Fig. 4, the mutant strain exhibited decreased swimming motility ability compared to that of the WT on L3 plates, with sodium lactate (Fig. 4a) or glycine (Fig. 4b) serving as the sole carbon sources. The motility-deficient phenotype in the mutant was able to be rescued by the complemented strain  $\Delta acfR$ -C. These results indicated that AcfR positively modulates the cells swimming motility behaviour of *A. caulinodans* ORS571.

Congo red is often used to detect exopolysaccharide (EPS) production in bacteria [15]. Figure 5 shows that the EPS production levels of the WT, mutant, and complemented strains on Congo red plates. There were no significant differences in the colony morphology and total EPS production among the WT,  $\Delta acfR$ , and  $\Delta acfR$ -C strains when they were grown on Congo red plates with sodium lactate as the sole carbon source. However,

the colony morphology and the total EPS production were significantly different ( $P \leq 0.01$ ) between the  $\Delta acfR$  and WT cells. The  $\Delta acfR$  mutant produced less “black pigmented” (Fig. 5a) and total EPS (Fig. 5b) than did the WT when grown on L3 medium containing glycine as the sole carbon source. These results indicated that AcfR was involved in the secretion process of EPS and that different carbon sources might influence the regulation of AcfR on the EPS phenotype.

#### $\Delta acfR$ mutant strain is impaired in competitive nodulation of the host plants

To investigate whether the motility and EPS formation phenotypic defects of the  $\Delta acfR$  mutant also affect symbiosis characteristics with the host plant, competitive nodulation assays were performed by analysing the levels of nodulation on the host plant. To test whether  $\Delta acfR$  possessed a competitive disadvantage when competing with WT, cultures of WT and  $\Delta acfR$  were mixed at 1:1, 1:5, and 1:10 ratios and subsequently incubated with *S. rostrata* roots and stems. The ratio of the number of wild-type cells to the number of mutant cells in the inoculum was determined by cell counts performed before mixing. At the end of each experiment (usually 35 days), the ratio of nodules induced by the wild-type or the mutant strain was determined by PCR to detect the colonies that grew from surface-sterilized crushed nodules on TY agar plates. The results shown in Fig. 6 demonstrate that the WT formed more nodules (by five- to sixfold) than the mutant strain when inoculated on roots and stems at a 1:1 ratio. With increases in the ratio of the inoculated mutant strain (WT: $\Delta acfR$  = 1:5 or 1:10), the nodule occupancy also increased. These results indicated that the competitive nodulation ability of the mutant strain was dramatically weakened compared with that of the WT.



**Fig. 4** Mutation of *acfR* affects swimming motility ability. Swimming motility behaviour of the *A. caulinodans* (WT), WT containing pBBR1MCS-2 plasmid (WT vector), mutant ( $\Delta acfR$ ), and complemented strains ( $\Delta acfR$ -C) were tested on 0.3% soft agar plates. Representative L3 plates with 10 mM sodium lactate (a) or glycine (b) as the sole carbon source are shown

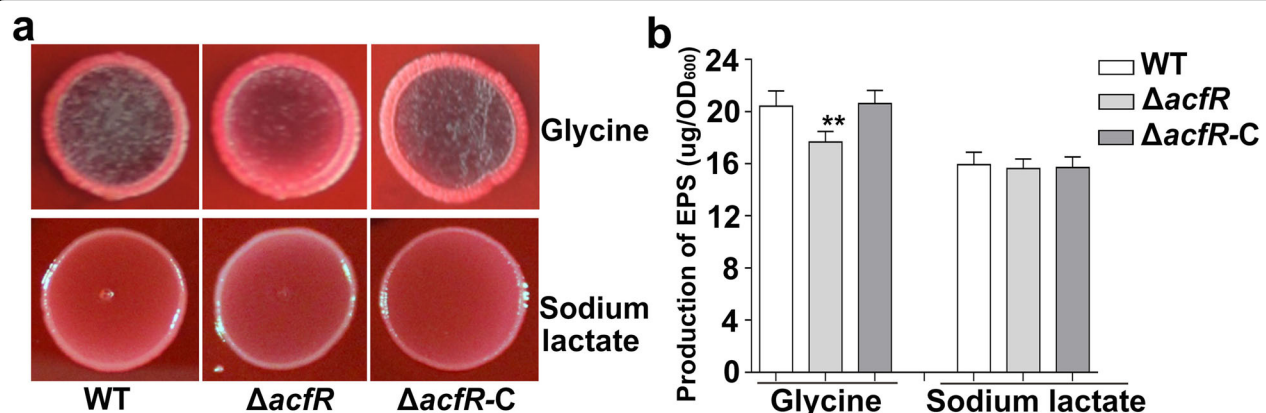
However, the number of nodules induced by  $\Delta acfR$ -C was not significantly different compared with that of the WT when inoculated at a 1:1 ratio, indicating that the competitive nodulation ability was restored in the complemented strain. Therefore, we conclude that the AcfR regulator is essential for normal nodulation competitiveness during symbiosis on *S. rostrata*.

**Discussion**

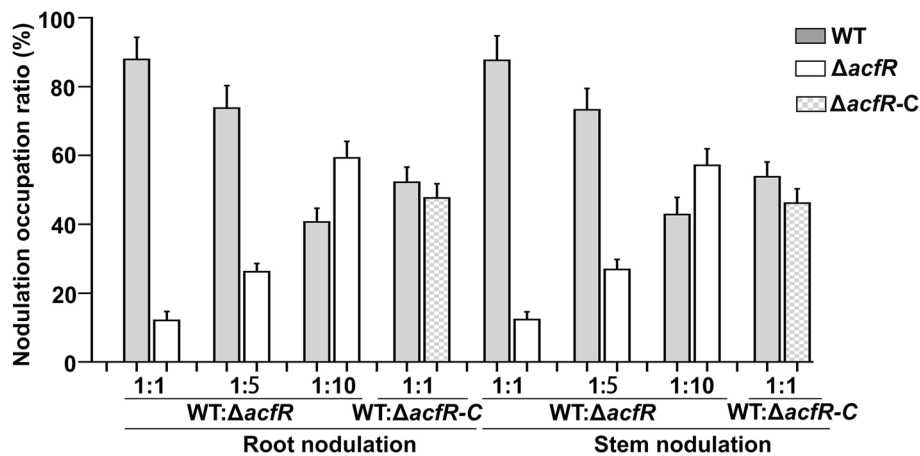
AcfR, a typical two-component response regulator, includes an N-terminal REC domain and a C-terminal HTH\_LuxR DNA-binding domain. Previous studies have shown that among the 991 LuxR-associated protein sequences (containing at least one HTH\_LuxR domain) of Actinobacteria, the REC domain appears to be associated

with LuxR in 53% of cases [16]. These RECs present upstream LuxR domains and are primarily involved in the signal transduction pathway, suggesting that REC + HTH\_LuxR proteins should be viewed not only as single transcription factors but also as response regulators of TCS. In some gram-positive bacteria of Actinobacteria, the REC + HTH\_LuxR proteins are most commonly utilized as RRs of TCS. This specific association of REC + HTH\_LuxR appears to be a widespread phenomenon in *B. subtilis* and *Lactobacillus plantarum* [17] that is involved in QS-related competence regulation.

In gram-negative bacteria, NarL with the REC + HTH\_LuxR domain regulates the nitrate/nitrite signal transduction pathway in *E. coli* [18]. In *S. meliloti*, the FixJ



**Fig. 5** Morphotypes observation and quantitative analysis of EPS production. a The morphology of colonies (WT,  $\Delta acfR$ , and  $\Delta acfR$ -C) grown on L3 Congo red plates at 37 °C for 2–3 days. L3 plates contain 10 mM glycine or sodium lactate as the sole carbon source. b Quantitative analysis of the total EPS produced by strains of WT,  $\Delta acfR$ , and  $\Delta acfR$ -C. The error bars indicate standard deviations which were calculated by three independent experiments. Statistically significant differences between the WT and mutant strain was indicated by the asterisks (\*\* $P \leq 0.01$ )



**Fig. 6** The  $\Delta acfR$  mutant reduced nodulation competitiveness on roots and stems. The  $\Delta acfR$  mutant was mixed at a 1:1, 1:5 or 1:10 with WT and inoculated onto roots and stems of *S. rostrata*. The complemented strain  $\Delta acfR-C$  and WT was mixed at a 1:1 ratio. Data are shown the % of WT, mutant or complemented strain recovered from root nodules or stem nodules. At least 100 colonies that reisolated from randomly selected nodules from ten individual plants were identified and analyzed. The error bars represent the standard deviations of three independent experiments

and FixL are two-component regulators that are widely spread among prokaryotes. FixL, as a transmembrane protein, senses and transduces environmental signals to FixJ. Next, the transcriptional regulator FixJ activated the expression of *nif* and *fix* genes [19]. In the genome of the gram-negative bacterium *A. caulinodans* ORS571, seven REC + HTH\_LuxR regulators were identified. Our previous results showed that the REC + HTH\_LuxR regulator AcLR1 (WP\_012169103) is involved in the c-di-GMP signalling pathway and initiates a downstream related signal transcription pathway [20]. In this work, we have characterized the response regulator AcfR of *A. caulinodans*, which showed multiple affected phenotypes: (i) AcfR positively regulates the swimming motility behaviour of *A. caulinodans* under free-living conditions but does not affect the normal growth of cells; (ii) the *acfR* gene deletion mutant strain produced less “black pigmentation” and EPS than the WT when glycine was used as the sole carbon source; and (iii) AcfR positively regulated the competitive nodulation ability of *S. rostrata* roots and stems. These pleiotropic phenotypes were attributable to the deletion of the *acfR* gene, which encodes a REC + HTH\_LuxR response regulator of the NarL/FixJ family. Rhizobial motility, chemotaxis and EPS are considered to play essential roles in the early stages of competitive colonization and nodulation [21, 22]. AcfR of *A. caulinodans* ORS571 regulates competitive nodulation ability and may directly affect the symbiotic pathway or indirectly regulate symbiosis by affecting bacterial motility behaviour and EPS production. Further research is warranted to investigate the signalling pathway of symbiosis between *A. caulinodans* and its host plant.

## Conclusions

Our results indicated that AcfR, as a FixJ family response regulator, is involved in the regulation of gram-negative bacterial motility, exopolysaccharide production and competitive symbiosis processes with the host. These findings indicate that AcfR is both a response regulator of the TCS and a transcription factor that plays an important role in regulating *Rhizobium*-legume host symbiosis.

## Methods

### Bacterial strains and growth conditions

*A. caulinodans* ORS571 was used throughout this study as the wild-type strain. All strains and plasmids used in this study are listed in Table 1. Bacteria (*E. coli*) were routinely grown overnight in Luria-Bertani (LB) broth or on LB agar at 37 °C for the amplification of recombinant clones and plasmid isolation. The *A. caulinodans* ORS571 WT strain and mutant  $\Delta acfR$  were grown in L3 medium containing 100 µg/mL ampicillin and 25 µg/mL nalidixic acid antibiotics at 37 °C [22]. The complemented strain  $\Delta acfR-C$  was grown in L3 medium containing 100 µg/mL ampicillin, 25 µg/mL nalidixic acid and 50 µg/mL kanamycin. The L3 medium was supplemented with 10 mM NH<sub>4</sub>Cl as nitrogen source and with 10 mM glycine or succinate as the sole carbon sources.

### Phylogenetic analysis

Amino acid sequences were aligned and analysed with the multiple sequence alignment program ClustalW of BioEdit software. Phylogenetic and molecular evolutionary analyses were conducted using MEGA-X version. A neighbour-joining phylogenetic tree was constructed by

**Table 1** Strains and plasmids used in the study

Strain or plasmid	Relevant properties	Source or reference
<b>Strain:</b>		
<i>A. caulinodans</i> ORS571	Wild-type strain, <i>Amp<sup>r</sup></i> , <i>Nal<sup>r</sup></i>	[1]
$\Delta acfR$	ORS571 derivative, <i>acfR</i> deletion mutant, <i>Amp<sup>r</sup></i> , <i>Nal<sup>r</sup></i>	This study
$\Delta acfR$ -C	$\Delta acfR$ mutant harboring the pBBR- <i>acfR</i> plasmid, <i>Amp<sup>r</sup></i> , <i>Nal<sup>r</sup></i> , <i>Kan<sup>r</sup></i>	This study
<i>E. coli</i> DH5a	F <sup>-</sup> S-upE44 $\Delta lacU169$ ( $\phi 80 lacZ\Delta M15$ ) <i>hsdR17 recA1 endA1 gyrA96 thi-1 relA1</i>	Transgen
<b>Plasmid:</b>		
pCM351	Mobilizable allelic exchange vector, <i>Amp<sup>r</sup></i> , <i>Gen<sup>r</sup></i>	[23]
pCM157	IncP plasmid that expresses Cre recombinase, <i>Tet<sup>r</sup></i>	[23]
pRK2013	Helper plasmid, ColE1 replicon, <i>Tra<sup>+</sup></i> , <i>Kan<sup>r</sup></i>	[24]
pBBR1MCS-2	Broad-host-range cloning vector, <i>Kan<sup>r</sup></i>	[25]
pBBR- <i>acfR</i>	pBBR1MCS-2 with <i>acfR</i> ORF and upstream promoter region, <i>Kan<sup>r</sup></i>	This study

*Amp<sup>r</sup>* ampicillin resistance, *Nal<sup>r</sup>* Nalidixic acid, *Gen<sup>r</sup>* gentamicin resistance, *Kan<sup>r</sup>* kanamycin resistance, *Tet<sup>r</sup>* tetracycline resistance

using amino acid sequences with 1000 bootstrap replications. These sequences include AcfR and NarL/FixJ family proteins (FixJ family response regulator of *Azorhizobium* sp. AG788, FixJ of *S. meliloti*, FixJ of *A. caulinodans*, NarL, CitB, RcsB, and UhpA). QS-LuxR of *Vibrio fischeri* as an outgroup was analysed to construct a phylogenetic tree.

#### Construction of mutant, and complemented strains

To construct the *acfR* gene deletion mutant, a 710-bp fragment was amplified using the primers AcfRUF and AcfRUR (Table 2) and inserted into pCM351 [23] after restriction with KpnI and NdeI. The positive recombinant plasmid was designated pCM351::UF. A 650-bp fragment was amplified with primers AcfRDF and AcfRDR (Table 2) and cloned into the pCM351::UF after restriction with ApaI and AgeI. The positive plasmid (pCM351::UF::DF) was transformed into ORS571 by using pRK2013 as the helper plasmid [24], and the *acfR* gene deletion mutant was subsequently screened based on homologous double exchange as previously described [26]. The correct integration of the mutants was confirmed by PCR and named  $\Delta acfR$ .

To construct the complemented strain of  $\Delta acfR$ , a fragment containing the *acfR* gene and the predicted promoter sequence was obtained by PCR with the primer combination AcfR-CF/AcfR-CR and subsequently was digested with KpnI and BamHI. This fragment was ligated into the vector pBBR-MCS2 [25], which had been cut with KpnI and BamHI. The correct sequence was verified by DNA sequencing. Next, the recombinant vector was transformed into the  $\Delta acfR$  mutant to screen the complemented strain ( $\Delta acfR$ -C) based on kanamycin resistance.

#### Growth kinetics experiments

The growth kinetics of WT and mutant strains were grown in TY medium with 25  $\mu$ g/ml nalidixic acid and 100  $\mu$ g/ml ampicillin antibiotics. The overnight cultures were diluted into fresh L3 medium to an initial OD<sub>600</sub> of 0.02 and grown at 37 °C with rotary shaking at 180 rpm. Growth kinetics were determined by monitoring turbidity at 600 nm. The experiments were performed in triplicate, and the data shown are the means and standard deviation.

**Table 2** Oligonucleotides used in the study

Primer name	Sequence (5'-3') <sup>a</sup>	Purpose
AcfR-UF-KpnI	GGGGTACCCTGATGACCCTCAGCCAGTTG	$\Delta acfR$ mutant construction
AcfR-UR-NdeI	TCCATATGTGGATCGTTTGACGAGGTAC	$\Delta acfR$ mutant construction
AcfR-DF-ApaI	TCGGGCCCCGAGACGCGTCGGAATTCCTGA	$\Delta acfR$ mutant construction
AcfR-DR-AgeI	CGACGCGTAATGGCGATGCCAACTACCGA	$\Delta acfR$ mutant construction
AcfR-CF-KpnI	GGGTACCTGGGTGCGACGCTA TCACGGA	$\Delta acfR$ -C construction
AcfR-CR-BamHI	CGGGATCCCCTGACGGCAGACATCGAAACG	$\Delta acfR$ -C construction
AcfR-F	GTGACCTCGTCAAACGATCCA	Validation of <i>acfR</i>
AcfR-R	TCAGGAATTCGACGCGTCTC	Validation of <i>acfR</i>

<sup>a</sup>Engineered restriction sites are underlined

### Motility behaviour assays

Motility assays were performed on 0.3% soft agar L3 plates according to previous publications [26]. The L3 plates contained a 10 mM carbon source (sodium lactate or glycine) and 10 mM NH<sub>4</sub>Cl. Briefly, 5 µl of overnight grown cultures were added to plates and incubated at 37 °C for 2–3 days. The swimming diameter at the agar surface was utilized to assess the swimming motility ability.

### Exopolysaccharide production assays

L3 plates supplemented with 40 µg/ml Congo red, 10 mM NH<sub>4</sub>Cl and 10 mM carbon sources (sodium lactate and glycine) were used to determine the Congo red-binding properties of colonies. To examine EPS production, mid-logarithmic phase cultures were adjusted at an OD<sub>600</sub> of 1.0, and 15 µl bacterial cultures were spotted onto the L3 plates (0.8% agar). Morphological observations were made after an incubation period of 2–3 days at 37 °C. The total EPS was quantified by referring to the method described by Liu et al. [20].

### Competitive nodulation assays on plant roots

Plant cultivation and nodulation tests were performed as described by previously [27, 28] with minor modifications. Briefly, two types of treatment were tested: WT:  $\Delta acfR$  at approximately 1:1, 1:5 and 1:10 and WT: $\Delta acfR$ -C in approximately 1:1. For competitive nodulation on roots, surface-sterilized seedlings of *S. rostrata* were inoculated with bacterial cultures corresponding to each treatment at an OD<sub>600</sub> of 0.5 for 30 min. For competitive nodulation on stems, cell suspensions corresponding to each treatment were painted onto *S. rostrata* stems after 35 days of plant growth. Ten plants were used for each of the three treatments. Bacterial endophytes were then isolated from surface-sterilized root or stem nodules at 35 days postinoculation and analysed. The WT and  $\Delta acfR$  reisolated from nodules were determined by PCR using the primer pair AcfR-F and AcfR-R. The WT and  $\Delta acfR$ -C reisolated from nodules were distinguished based on kanamycin resistance markers.

### Statistical analysis

All statistical analyses were performed using the SPSS 17.0 software package. We determined average values from at least three independent experiments and performed one-way analysis of variance followed by pairwise two-sample t-test assuming equal variances. Student's t-test assuming equal variances was used to calculate the *p*-values. *P*-values < 0.05 and < 0.01 were tested. Each experiment was repeated in at least three independent experiments.

### Abbreviations

TCS: Two-component regulatory system; HK: Histidine kinase; RR: Response regulator; REC: Receiver domain; HTH: Helix-turn-helix; QS: Quorum sensing; HATPase\_c: Histidine kinase-like ATPases; HisKA: His Kinase A domain; ORF: Open reading frame; EPS: Extracellular polysaccharide

### Supplementary Information

The online version contains supplementary material available at <https://doi.org/10.1186/s12866-021-02138-w>.

**Additional file 1: Figure S1.** Domain architecture and interaction network of AcfR. (a) Domain architecture of AcfR predicted by SMART. AcfR was identified encoding a protein of 214 amino acids that containing a REC domain and a HTH\_LuxR domain. (b) The interactive protein network of the AcfR predicted by STRING. Eight proteins (containing two AAA family ATPase, two PAS domain S-box, FixL, etc.) predicted to interact with *A. caulinodans* AcfR. (c) The predicted functional partners based on the neighborhood evidence, cooccurrence evidence, and text-mining evidence. **Figure S2.** Domain structures of proteins that predicted in Fig. S1. The protein domains were predicted by using the SMART program. There are eight predicted interaction proteins (AZC\_0278, 2411, 2412, 3126, 3970, 3971, 3914, and 0489). Six of eight proteins with HATPase\_c and HisKA domains. Abbreviations: PAS, Per-Arnt-Sim domain; PAC, Motif C-terminal to PAS motifs; GAF, Domain present in phytochromes and cGMP-specific phosphodiesterases; HATPase\_c, Histidine kinase-like ATPases; HisKA, His Kinase A (phospho acceptor) domain. **Figure S3.** Growth rates of the wild-type, mutant, and complemented strain are similar. Growth curves of the WT,  $\Delta acfR$ , and  $\Delta acfR$ -C in L3 liquid medium with 10 mM sodium lactate as sole carbon source and 10 mM NH<sub>4</sub>Cl as nitrogen source.

### Acknowledgements

Not applicable.

### Authors' contributions

WL and XKH designed the experiments, analyzed the data and wrote the manuscript. WL, XB, YL, and HKZ carried out the experiments. All authors have revised and approved the manuscript.

### Funding

This work was financially supported by the National Natural Science Foundation of China (31800099 and 32070112).

### Availability of data and materials

The datasets used and/or analyzed during the current study available from the corresponding author on reasonable request.

### Declarations

#### Ethics approval and consent to participate

Not applicable.

#### Consent for publication

Not applicable.

#### Competing interests

The authors declare that they have no conflict of interest.

#### Author details

<sup>1</sup>Key Laboratory of Coastal Biology and Bioresource Utilization, Yantai Institute of Coastal Zone Research, Chinese Academy of Sciences, Yantai 264003, China. <sup>2</sup>Laboratory for Marine Biology and Biotechnology, Qingdao National Laboratory for Marine Science and Technology, Qingdao 266237, China. <sup>3</sup>Center for Ocean Mega-Science, Chinese Academy of Sciences, Qingdao, China.



Received: 25 October 2020 Accepted: 22 February 2021

Published online: 09 March 2021

## References

- Dreyfus BL, Elmerich C, Dommergues YR. Free-living *Rhizobium* strains able to grow on N<sub>2</sub> as sole nitrogen source. *Appl Environ Microbiol*. 1983;45:711–3.
- Stacey G. The *Rhizobium*-legume nitrogen-fixing symbiosis. In: *Biology of the nitrogen cycle*. Amsterdam: Elsevier; 2007. p. 147–63.
- Hoch JA, Varughese KI. Keeping signals straight in phosphorelay signal transduction. *J Bacteriol*. 2001;183:4941–9.
- Stock AM, Robinson VL, Goudreau PN. Two-component signal transduction. *Annu Rev Biochem*. 2000;69:183–215.
- Stock AM, West AH. Response regulator proteins and their interactions with histidine protein kinases. New York: Academic Press; 2003.
- Slock J, VanRiet D, Kolibachuk D, Greenberg EP. Critical regions of the *Vibrio fischeri* luxR protein defined by mutational analysis. *J Bacteriol*. 1990;172:3974–9.
- Vannini A, Volpari C, Di Marco S. Crystal structure of the quorum-sensing protein TraM and its interaction with the transcriptional regulator TraR. *J Biol Chem*. 2004;279(23):24291–6.
- Galperin MY. Diversity of structure and function of response regulator output domains. *Curr Opin Microbiol*. 2010;13(2):150–9.
- Agron PG, Helinski DR. Symbiotic expression of *Rhizobium meliloti* nitrogen fixation genes is regulated by oxygen. In: Hoch JA, Silhavy T, editors. *Two-Component Signal Transduction*. Washington D.C: ASM Press; 1995. p. 275–87.
- Katsir G, Jarvis M, Phillips M, Ma Z, Robert PG. The *Escherichia coli* NarL receiver domain regulates transcription through promoter specific functions. *BMC Microbiol*. 2015;15:174.
- Webber CA, Kadner RJ. Action of receiver and activator modules of UhpA in transcriptional control of the *Escherichia coli* sugar phosphate transport system. *Molecular Microbiology*. 1995;15(5):883–93.
- Zheng L, Halberg R, Roels S, Ichikawa H, Kroos L, Losic R. Sporulation regulatory protein gerE from *Bacillus subtilis* binds to and can activate or repress transcription from promoters for mother-cell-specific genes. *J Mol Biol*. 1992;226(4):1037–50.
- Richet E, Raibaud O. MalT, the regulatory protein of the *Escherichia coli* maltose system, is an ATP-dependent transcriptional activator. *EMBO J*. 1989;8(3):981–7.
- Szklarczyk D, Franceschini A, Wyder S, Forslund K, Heller D, Huerta-Cepas J, Simonovic M, Roth A, Santos A, Tsafou KP. STRING v10: protein-protein interaction networks, integrated over the tree of life. *Nucleic Acids Res*. 2015;43:D447–52.
- Ueda A, Wood TK. Connecting quorum sensing, c-di-GMP, pel polysaccharide, and biofilm formation in *Pseudomonas aeruginosa* through tyrosine phosphatase TpbA (PA3885). *PLoS Pathog*. 2009;5:1–15.
- Santos CL, Correia-Neves M, Moradas-Ferreira P, Mendes MV. A walk into the LuxR regulators of Actinobacteria: Phylogenomic distribution and functional diversity. *PLoS One*. 2012;7(10):e46758.
- Sturme MH, Francke C, Siezen RJ, de Vos WM, Kleerebezem M. Making sense of quorum sensing in lactobacilli: a special focus on *Lactobacillus plantarum* WCFS1. *Microbiology*. 2007;153:3939–47.
- Zhang JH, Xiao GP, Gunsalus RP, Hubbell WL. Phosphorylation triggers domain separation in the DNA binding response regulator NarL. *Biochemistry*. 2003;42(9):2552–9.
- David M, Daveran ML, Batut J, Dedieu A, Domergue O, Ghai J, Hertig C, Boistard P, Kahn D. Cascade regulation of *nif* gene expression in *Rhizobium meliloti*. *Cell*. 1994;54:671–84.
- Liu W, Li Y, Bai X, Wu HG, Bian LX, Hu XK. LuxR-type regulator AclR1 of *Azorhizobium caulinodans* regulates cyclic di-GMP and numerous phenotypes in free-living and symbiotic states. *Mol Plant-Microbe Interact*. 2020;33:3.
- Brencic A, Winans SC. Detection of and response to signals involved in host-microbe interactions by plant-associated bacteria. *Microbiol Mol Biol Rev*. 2005;69:155–94.
- Liu W, Sun Y, Shen RM, Dang XX, Liu XL, Sui F, Li Y, Zhang ZP, Alexandre G, Elmerich C. A chemotaxis-like pathway of *Azorhizobium caulinodans* controls flagella-driven motility, which regulates biofilm formation, exopolysaccharide biosynthesis, and competitive nodulation. *Mol Plant-Microbe Interact*. 2018;31(7):737–49.
- Marx CJ, Lidstrom ME. Broad-host-range cre-lox system for antibiotic marker recycling in gram-negative bacterium. *Biotechniques*. 2002;33:1062–7.
- Figurski DH, Helinski DR. Replication of an origin-containing derivative of plasmid RK2 dependent on a plasmid function provided in trans. *Proc Natl Acad Sci U S A*. 1979;76:1648–52.
- Kovach ME, Elzer PH, Hill DS, Robertson GT, Farris MA, Roop RM, Peterson KM. Four new derivatives of the broad-host-range cloning vector pBRR1MCS, carrying different antibiotic-resistance cassettes. *Gene*. 1995;166:175–6.
- Liu W, Bai X, Li Y, Min J, Kong YC, Hu XK. CheY1 and CheY2 of *Azorhizobium caulinodans* ORS571 regulate chemotaxis and competitive colonization with the host plant. *Appl Environ Microbiol*. 2020;86:15.
- Yost CK, Rochepeau P, Hynes MF. *Rhizobium leguminosarum* contains a group of genes that appear to code for methyl-accepting chemotaxis proteins. *Microbiol*. 1998;144:1945–56.
- Callow JA, Vincent JM. A manual for the practical study of root nodule bacteria. *J Appl Ecol*. 1971;8:977.

## Publisher's Note

Springer Nature remains neutral with regard to jurisdictional claims in published maps and institutional affiliations.

Ready to submit your research? Choose BMC and benefit from:

- fast, convenient online submission
- thorough peer review by experienced researchers in your field
- rapid publication on acceptance
- support for research data, including large and complex data types
- gold Open Access which fosters wider collaboration and increased citations
- maximum visibility for your research: over 100M website views per year

At BMC, research is always in progress.

Learn more [biomedcentral.com/submissions](https://www.biomedcentral.com/submissions)

