

Allosteric control of the exportin CRM1 unraveled by crystal structure analysis

Thomas Monecke, Achim Dickmanns and Ralf Ficner

Abteilung für Molekulare Strukturbiologie, Institut für Mikrobiologie und Genetik, Göttinger Zentrum für Molekulare Biowissenschaften, Georg-August-Universität Göttingen, Germany

Keywords

CRM1, HEAT repeats, importin β , nuclear export, nuclear transport receptor, X-ray crystallography

Correspondence

R. Ficner, Abteilung für Molekulare Strukturbiologie, Justus-von-Liebig-Weg 11, 37077 Göttingen, Germany
Fax: +49 (0)551 3914082
Tel: +49 (0)551 3914071
E-mail: rficner@uni-goettingen.de

(Received 1 April 2014, revised 2 May 2014, accepted 12 May 2014)

doi:10.1111/febs.12842

Nucleocytoplasmic trafficking in eukaryotic cells is a highly regulated and coordinated process which involves an increasing variety of soluble nuclear transport receptors. Generally, transport receptors specifically bind their cargo and facilitate its transition through nuclear pore complexes, aqueous channels connecting the two compartments. Directionality of such transport events by receptors of the importin β superfamily requires the interaction with the small GTPase Ras-related nuclear antigen (Ran). While importins need RanGTP to release their cargo in the nucleus and thus to terminate import, exportins recruit cargo in the RanGTP-bound state. The exportin chromosome region maintenance 1 (CRM1) is a highly versatile transport receptor that exports a plethora of different protein and RNP cargoes. Moreover, binding of RanGTP and of cargo to CRM1 are highly cooperative events despite the fact that cargo and RanGTP do not interact directly in crystal structures of assembled export complexes. Integrative approaches have recently unraveled the individual steps of the CRM1 transport cycle at a structural level and explained how the HEAT-repeat architecture of CRM1 provides a framework for the key elements to mediate allosteric interactions with RanGTP, Ran binding proteins and cargo. Moreover, during the last decade, CRM1 has become a more and more appreciated target for anti-cancer drugs. Hence, detailed understanding of the flexibility, the regulatory features and the positive binding cooperativity between CRM1, Ran and cargo is a prerequisite for the development of highly effective drugs. Here we review recent structural advances in the characterization of CRM1 and CRM1-containing complexes with a special emphasis on X-ray crystallographic studies.

Introduction

Membrane enclosed cellular compartments of eukaryotes like the nucleus, mitochondria or plastids allow a strict spatiotemporal separation of cellular processes.

Beyond the pure functional division, compartmentalization allows concentration gradients of ions or molecules to be generated and separate reaction spaces to

Abbreviations

CBD, cap binding domain; CRIME, CRM1-importin β etc.; CRM1, chromosome region maintenance 1; EM, electron microscopy; HEAT, huntingtin, elongation factor 3 (EF3), the regulatory A subunit of protein phosphatase 2A (PP2A) and the P3 kinase TOR1; LMB, leptomycin B; MD, molecular dynamics; NES, nuclear export signal; NPC, nuclear pore complex; Nup, nucleoporin; PHAX, phosphorylated adapter for RNA export; PKI, protein kinase inhibitor; RanBP, Ran binding protein; RanGAP1, Ran GTPase activating protein; Ran, Ras-related nuclear antigen; Rev, regulator of expression of virion proteins; SINE, selective inhibitor of nuclear export; snRNA, small nuclear RNA; SPN1, snurportin1; UsnRNP, uridine-rich small nuclear ribonucleoprotein.

be established. Hence, compartmentalization poses regulatory advantages; however, it also represents a formidable challenge, namely to ensure the efficient exchange of macromolecules between the individual compartments, e.g. the nucleus and the cytoplasm.

Besides export of most mRNAs and import of RanGDP, active transport of macromolecules across the double-layered nuclear envelope is mediated by soluble nuclear transport receptors of the importin β superfamily termed importins or exportins [1,2]. An intrinsic property of importin β type nuclear transport receptors is their ability to bind both cargo [3,4] and/or the small GTPase Ras-related nuclear antigen (Ran) in its GTP-bound form [5,6]. Importins recruit their cargo in the cytoplasm and, as binary complexes, pass the nuclear pore into the nucleus, where RanGTP binding promotes cargo release and import termination (Fig. 1) [5,6]. Conversely, exportins bind cargo and RanGTP cooperatively in the nucleus to form a functional ternary export complex, which translocates to the cytoplasm [3,4]. Here, additional factors like Ran binding proteins (e.g. RanBP1 and RanBP2), the Ran GTPase activating protein (RanGAP1) or nucleoporins (Nups) like Nup214 support cargo release and facilitate GTP hydrolysis by Ran (Fig. 1). The RanGTP gradient across the nuclear envelope with a 200–1000-fold higher RanGTP concentration in the nucleus [7–9] enables directionality of transport and

allows the transport receptors to act as highly efficient unidirectional cargo pumps [6,10]. The RanGTP gradient itself is maintained by the asymmetric distribution of Ran regulatory factors, namely RanGAP1 in the cytoplasm [11–13] and the Ran guanine nucleotide exchange factor in the nucleus (Fig. 1) [14,15].

The exportin chromosome region maintenance 1 (CRM1) mediates export of a plethora of functionally and structurally unrelated protein and RNP cargoes [16,17] and was found to be essential in all organisms tested so far. For example, CRM1 depletes several proteins from cell nuclei including the import adapter snurportin1 (SPN1) [18] as well as a set of eukaryotic translation initiation and termination factors [19]. Apart from this function, CRM1 is strictly required for several viral lifecycles. For example, export of the unspliced HIV-1 mRNA depends on CRM1 [3,20–22]. Moreover, export of several cellular mRNAs, like COX-2, c-Fos, cyclin D1 [23–26], and of diverse RNPs including the small and large ribosomal subunit and the signal recognition particle is mediated by CRM1 [27–29].

In recent years, great progress has been made by several groups towards a complete understanding of the structure–function relation of CRM1 at an atomic level. In this review we focus on the recent advances in the structural characterization of CRM1 and CRM1-containing complexes with a special emphasis on

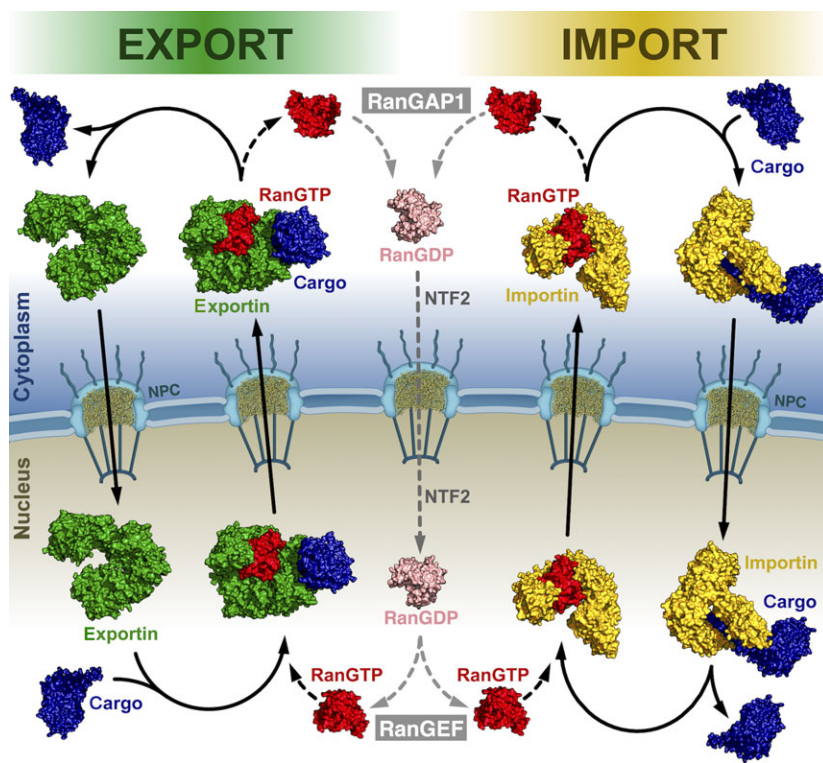


Fig. 1. Schematic overview of nuclear export (left) and nuclear import (right) by importin β type transport receptors through nuclear pore complexes (NPCs). Exportins (green) need RanGTP (red) to recruit cargo (blue) in the nucleus while importin-cargo complexes are dissociated by RanGTP binding (import termination). Note the opposite function of RanGTP in nuclear import and export. The cytoplasmic Ran GTPase activating protein (RanGAP1) constantly hydrolyzes RanGTP to RanGDP, which is actively transported back to the nucleus by the nuclear transport factor 2 (NTF2). The Ran guanine nucleotide exchange factor (RanGEF) ensures a constant high RanGTP concentration in the nucleus.

X-ray crystallography and provide an outlook to the future challenges.

Cellular functions of CRM1

CRM1 was first identified as a gene mutated in cold-sensitive strains of the budding yeast *Schizosaccharomyces pombe*, which exhibits deformed chromosomes at restrictive temperatures [30]. Subsequent investigations demonstrated that mutations in the *crm1* gene trigger the deregulation of a transcription factor, namely pap1 (homologue of human transcription factor AP1) [31], and may lead to multiple drug resistances [32,33]. Later CRM1 was found to interact with a protein of the nuclear pore complex (NPC), Can/Nup214 [34,35], suggestive of a role as a nuclear transport receptor. CRM1 function is highly conserved in eukaryotes, as human CRM1 has the ability – at least in part – to complement a yeast defect [36]. *In vitro* and *in vivo* experiments clearly demonstrated its role as an export receptor [3,37–41] and identified the cargoes as proteins bearing a so-called classical or leucine-rich nuclear export signal (NES) [21,22]. For more complicated export events additional factors and adapters may be necessary. For example, export of m⁷G-capped small nuclear RNAs (snRNAs) additionally requires PHAX (phosphorylated adapter of RNA export) as well as the cap binding complex composed of the cap binding proteins 20 and 80 [42,43].

In recent years, CRM1 has been identified as a binding partner of various (proto-) oncogenes like p53, Rb, BRCA1, p21/CIP, p27/KIP1 and cyclin D1 [44–48], making it an interesting target in molecular oncology and therapeutics. The identification of the natural CRM1-specific export inhibitor leptomycin B (LMB) [3,36,37,49], the recent structural understanding of cargo recognition by CRM1 within the NES cleft and the blockade of exactly that binding cleft by LMB [50–52] led to the development of novel therapeutics [53–55]. These compounds block CRM1-mediated export, and by influencing the nucleocytoplasmic distribution pattern of the oncogenes they modulate the fate of cancer cells by decreasing their survival rate [54–61]. With respect to the growing interest in medical research towards CRM1 and its role related to various cancers such as breast cancer, pancreatic cancer, leukemia and lymphoma [44,54,55,57–59,61–63] it is important to understand also the dynamics of mammalian CRM1 with a special emphasis on the NES cleft, where the therapeutic compounds bind.

Later investigations manifested additional roles of CRM1 in different cellular processes, e.g. opposing the

effects of importin β in mitosis [64]. Moreover, CRM1 plays a role in mitotic progression as it localizes to kinetochores and binds RanGAP1 and RanBP2 in a RanGTP-dependent manner. In addition, CRM1 affects the definition of kinetochore fibers and is involved in chromosome segregation at mitosis. In particular, CRM1 activity in the metaphase and late anaphase changes repartitioning of RanGTP and thus of effectors on kinetochores and centrosomes [64–69]. While CRM1 function in all the latter processes remains less well understood, recent progress in structural analysis has revealed a detailed picture of the structural changes in CRM1 during the individual steps of the nuclear transport cycle.

In 2004, the crystal structure of the C-terminal third of human CRM1 (amino acids 707–1027) was published, reporting on the architecture of CRM1 HEAT-repeat helices 15A–21A [70]. To date, 26 crystal structures of free CRM1 or CRM1 in complex with different interacting proteins are available in the Protein Data Bank (PDB). For example, crystal structures of CRM1 in complexes with the cargo SPN1 (CRM1-SPN1; PDB ID [3GB8](#)) [51], RanGTP (CRM1-RanGTP; PDB ID [3NC1](#)) [71], cargo and RanGTP (CRM1-RanGTP-SPN1; PDB ID [3GJX](#)) [50] as well as RanGTP and the cytoplasmic release trigger factor RanBP1 (CRM1-RanGTP-RanBP1; PDB ID [3M11](#)) [72] are available (Table 1). In addition to the relatively rigid and similar conformation of CRM1 in the various complexes, X-ray crystallography, electron microscopy (EM) and small angle X-ray scattering of free CRM1 provided evidence of the great conformational flexibility of this transport receptor (PDB IDs [4FGV](#), [3VYC](#), [4BSN](#), [4BSM](#); EMD-2110, 2111, 2274, 5564) [73–76]. Moreover, molecular dynamics (MD) simulations provided insight into the structural or conformational selection and stabilization of the different binding sites by their respective binding partners [73,74].

CRM1 – structural requirements for Ran and cargo binding

Generally, importin β type nuclear transport receptors are composed of a varying number of HEAT repeats. The canonical HEAT repeat is a structural motif formed by two anti-parallel helices (named A- and B-helix) connected by a short linker loop and a typical total length of ~ 40–50 residues (Fig. 2A) [77,78]. They have been named after the first couple of proteins bearing this motif, namely huntingtin, elongation factor 3 (EF3), the regulatory A subunit of protein phosphatase 2A (PP2A) and the P3 kinase TOR1.

Table 1. Properties of all CRM1-containing crystal structures available in the Protein Data Bank. The structure completeness is the percentage of CRM1 atoms present in the coordinate file with respect to the expected total number of atoms based on each wild-type sequence. *Hs*, *Homo sapiens*; *Mm*, *Mus musculus*; *Sc*, *Saccharomyces cerevisiae*; *Ct*, *Chaetomium thermophilum*.

Structure	State	Resolution	PDB ID	Space group	Mol/au	Structure completeness	Reference
Export complexes							
<i>Hs</i> CRM1 <i>Hs</i> SPN1	Ran-free cargo complex	2.90 Å	3GB8	<i>P6₄22</i>	1	88%	[51]
<i>Mm</i> CRM1 <i>Hs</i> SPN1 <i>Hs</i> RanGTP	Export complex	2.50 Å	3GJX	<i>P2₁</i>	2	98%	[50]
<i>Mm</i> CRM1 <i>Hs</i> SPN1-PKI <i>Hs</i> RanGTP	PKI-NES (SPN1 chimera)	3.42 Å	3NBY	<i>P2₁</i>	2	97%	[71]
<i>Mm</i> CRM1 <i>Hs</i> SPN1-Rev <i>Hs</i> RanGTP	Rev-NES (SPN1 chimera)	2.80 Å 2.90 Å	3NBZ 3NC0	<i>P2₁</i> <i>P2₁</i>	2 2	97% 97%	
<i>Mm</i> CRM1 <i>Hs</i> RanGTP	Cargo-free Ran complex	3.35 Å	3NC1	<i>C222₁</i>	1	96%	
Disassembly complex							
<i>Sc</i> CRM1 <i>Sc</i> RanBP1 <i>Sc</i> RanGTP	Disassembly complex (Δ 377–413)	2.00 Å 1.80 Å	3M11 4HB2	<i>P4₃2₁2</i> <i>P4₃2₁2</i>	1	94% 98%	[72] [52]
Inhibitors							
<i>Sc</i> CRM1 ^b <i>Sc</i> RanBP1 <i>Sc</i> RanGTP	LMB bound (Δ 377–413)	1.78 Å 1.90 Å 2.30 Å 2.05 Å 2.80 Å 1.90 Å 2.20 Å	4HAT 4HAW 4HAY 4HB4 4HB3^a 4HAZ 4HB0	<i>P4₃2₁2</i> <i>P4₃2₁2</i> <i>P4₃2₁2</i> <i>P4₃2₁2</i> <i>P4₃2₁2</i> <i>P4₃2₁2</i> <i>P4₃2₁2</i>	1 1 1 1 1 1 1	97% 96% 97% 95% 95% 95% 95%	[52]
	Anguinomycin B bound (Δ 377–413)	2.00 Å	4HAV	<i>P4₃2₁2</i>	1	97%	
	Ratjadone A bound (Δ 377–413)	2.00 Å	4HAU	<i>P4₃2₁2</i>	1	97%	
	KPT185 bound (Δ 377–413)	2.28 Å	4HAX	<i>P4₃2₁2</i>	1	97%	
	KPT251 bound (Δ 377–413)	2.10 Å 2.22 Å	4GMX 4GPT	<i>P4₃2₁2</i> <i>P4₃2₁2</i>	1 1	97% 96%	[54] [55]
Free CRM1							
<i>Ct</i> CRM1	Thermophilic CRM1	2.94 Å 3.10 Å	4FGV 4HZK	<i>P2₁2₁2₁</i> <i>P3₁</i>	1 2	99% 96%	[74]
<i>Hs</i> CRM1	C-terminal deletion (Δ 1033–1071)	4.10 Å 4.50 Å	4BSN 4BSM	<i>C222₁</i> <i>C222₁</i>	1 1	63% 79%	[76]
<i>Sc</i> CRM1	(Δ 377–413, Δ 971–984)	2.10 Å	3VYC	<i>P4₁</i>	1	90%	[75]
<i>Hs</i> CRM1	HEAT helices 15A–21A (amino acids 707–1027)	2.30 Å	1W9C	<i>P2₁2₁2</i>	2	30%	[70]

^a LMB in this crystal structure was weakly bound and thus not modeled.

^b Crystal structures contain different point mutations in the NES cleft of *Sc* CRM1 as specified in the PDB file.

CRM1 is composed of an array of 21 such HEAT repeats forming a continuous hydrophobic core (Fig. 2B) [50]. A slight tilt between consecutive HEAT repeats and their tandem-stacking arrangement in nuclear transport receptors leads to an overall superhelical shape. Structural analysis of a variety of nuclear transport receptors revealed a lack of interac-

tions of residues sequentially distant to each other, which is a quite common feature of globular proteins. Consequently, this arrangement provides the transport receptor with a remarkable high flexibility, as demonstrated by various crystal structures and MD simulations for the prototypical transport receptor importin β [79–84].

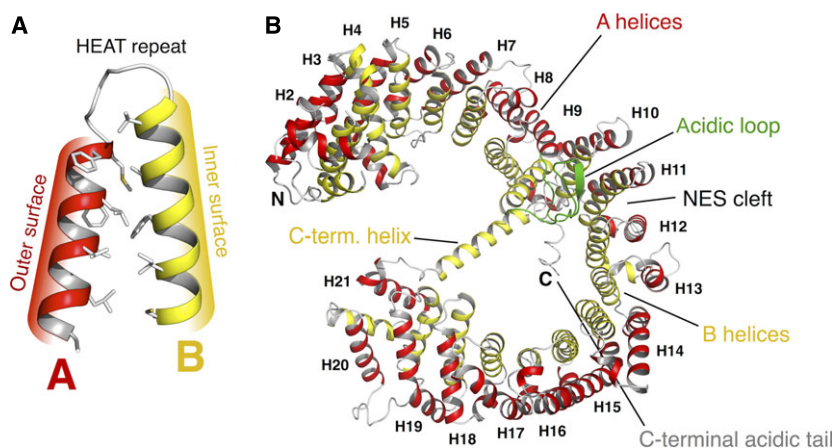
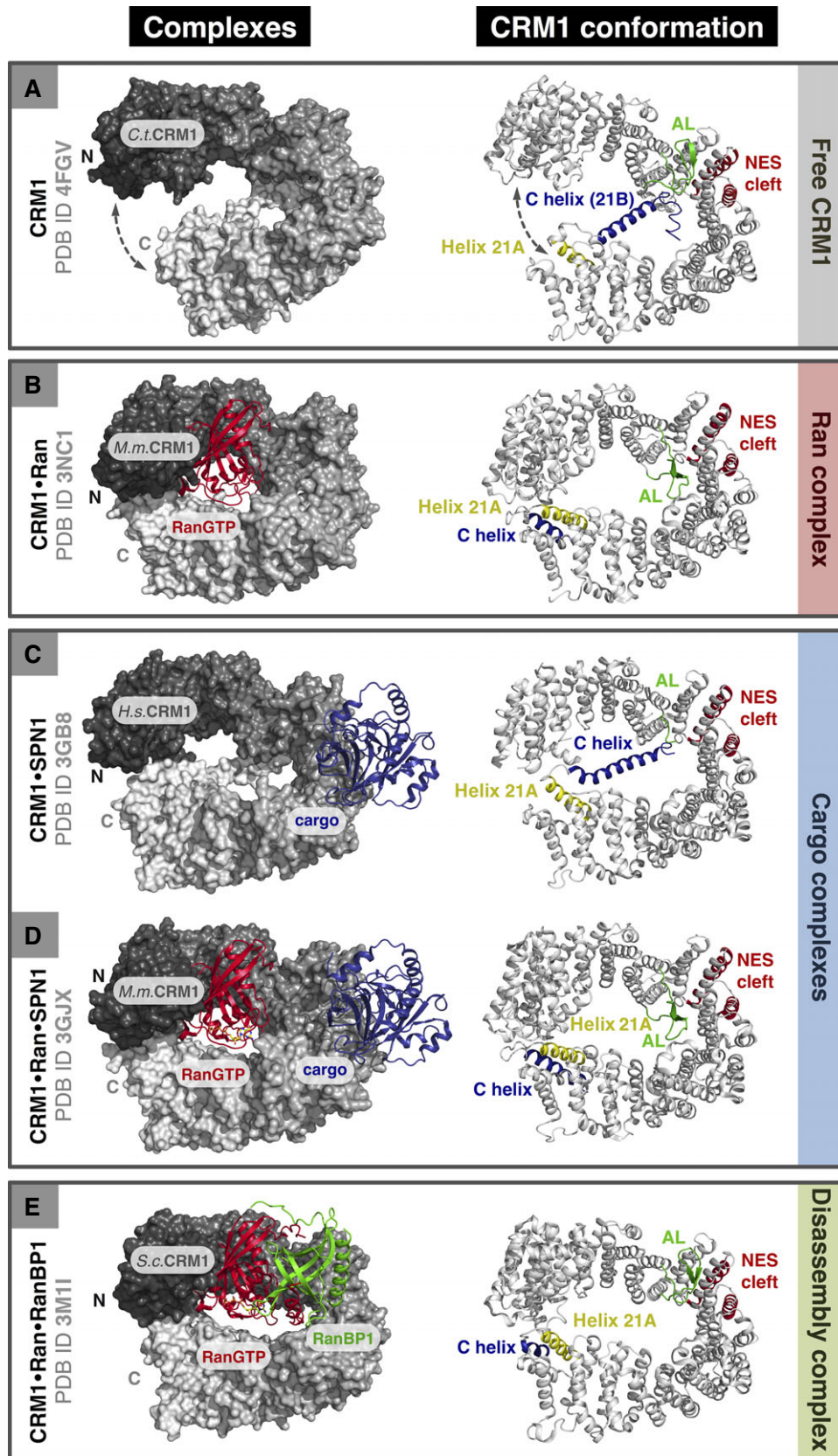


Fig. 2. HEAT-repeat architecture and overall structure of CRM1. (A) Structural organization of a HEAT repeat composed of two consecutive anti-parallel helices connected by a short linker loop. Commonly, the A-helix (red) is located at the outer, convex surface and the B-helix (yellow) lines the inner, concave area. HEAT repeats are characterized by pronounced intra-HEAT-repeat hydrophobic interactions. (B) CRM1 consists of an array of 21 consecutive HEAT repeats (H1–H21) forming an overall superhelical and flexible molecule. The acidic loop (green), NES cleft and the C-terminal helix with the adjacent C-terminal acidic tail are structural key features crucial for CRM1 function.

With respect to the overall structure of CRM1, the A-helices form the outer convex surface and may interact with phenylalanine-glycine-rich repeats of Nups during NPC passage. In contrast, the B-helices form the concave inner surface and interact with RanGTP [50] and, for most members of the importin β superfamily, with cargo (Fig. 2B).

Generally, importin β type nuclear transport receptors share a relatively low sequence homology of 10%–20%. The highest degree of sequence conservation between CRM1 and other importin β type transport receptors has been detected in the first three HEAT repeats. This N-terminal region has been termed the CRIME domain (CRM1–importin β etc.) [35,85] and is strictly required for the association with RanGTP (Figs 3 and 4). The CRIME domain binds to the switch II region of Ran, one of the two GTP-triggered switches common to small GTPases – hence nuclear transport receptors are able to sense the loading state of Ran [86,87]. Another important region involved in RanGTP binding is the acidic loop or HEAT9 loop (Fig. 4), a stretch of 26 residues of CRM1 forming a β -hairpin (Figs 2B and 3) [50]. In complex with cargo and/or RanGTP, the acidic loop adopts a seatbelt-like conformation, which locks Ran in a position intricately interacting with the CRIME domain of CRM1. In this conformation the acidic loop tip touches HEAT repeats 14 and 15 located on the opposing side of the CRM1 toroid (Fig. 3B,D) [50], thus increasing the rigidity of CRM1 in complexes [73]. In contrast, in the structure of CRM1 in complex with RanGTP and the Ran binding protein RanBP1 (Fig. 3E) the acidic loop

is shifted from its seatbelt lock to a position that triggers RanGTP and cargo release [72]. An amazing and unique property of CRM1 is the atypical arrangement of HEAT repeat 21 and especially the orientation of helix 21B, for which two major conformations have been found (Fig. 3). In complex with SPN1 and RanGTP or RanGTP alone, the B-helix of HEAT repeat 21 is in a stacking arrangement to the other HEAT repeats (e.g. HEAT repeat 20), but in an inverted orientation facing the convex outer side of the toroid (Fig. 3B,D) [50,72]. In contrast, in the crystal structures of free CRM1 or bound to SPN1, the B-helix of HEAT repeat 21 spans the central channel of CRM1 and interacts with a region in the vicinity of the base of the acidic loop contacting the back side of the NES cleft (Fig. 3A,C) [51,74,75]. This again indicates the high structural flexibility of CRM1 and is further highlighted by the fact that not all N-terminally located HEAT repeats (CRIME domain) could be modeled in the Ran-free CRM1–SPN1 structure due the lack of electron density (Fig. 3C and Table 1). Moreover, the orientation of helix 21B has implications on the distance between the N- and C-terminal HEAT repeats. While in the parallel orientation (e.g. in the ternary CRM1–RanGTP–SPN1 complex) the N- and C-terminal regions form a tight and intricate interaction pattern (Fig. 3B,D), the conformation of free CRM1 lacks such interactions entirely (Figs 2B and 3A) [50,51,72,74,75]. An additional feature located C-terminally adjacent to the helix 21B is a stretch of acidic residues named C-terminal acidic tail (Fig. 2B). The electrostatic interaction of this stretch and basic resi-



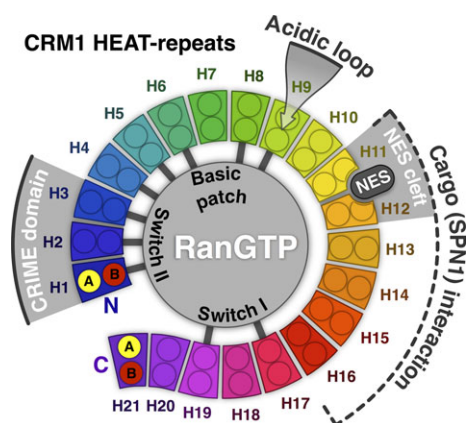


Fig. 4. Schematic representation of structural properties and cargo as well as RanGTP binding sites on CRM1. CRM1 HEAT repeats are represented by ring segments colored from dark blue (HEAT repeat 1, H1) to purple (HEAT repeat 21, H21). RanGTP is depicted as a gray circle with the location of the important switch regions I/II and the basic patch labeled. HEAT repeats interacting with RanGTP in crystal structures are connected to the respective part of RanGTP (gray line). The NES cleft is represented by a groove between HEAT repeats 11 and 12. HEAT repeats of binding sites for cargo, the location of the acidic loop and the CRIME domain are highlighted in gray.

dues on the helix B of HEAT repeat 12 in proximity to the NES cleft have been shown to play a pivotal role in NES binding and release [88].

In contrast to other known exportins, CRM1 is a remarkable exception as it has been shown to bind cargoes on the convex surface of the superhelical toroid involving HEAT repeats 11–16 (Figs 3C,D and 4). Several crystal structures show how the cargo SPN1 interacts with CRM1 in a multipartite manner. SPN1 is a specific adapter for the import of uridine-rich small nuclear RNP (UsnRNP) core particles into nuclei after their cytoplasmic maturation step has been completed. After import, for the re-localization into the cytoplasm, SPN1 harbors an N-terminal NES (called SPN1-NES), which forms an amphipathic α -helix and contains five hydrophobic key residues (Φ -residues) for binding. These key residues dock into preformed hydrophobic pockets of the NES cleft of CRM1, which is located between the A-helices of the highly conserved HEAT repeats 11 and 12 (Figs 2B

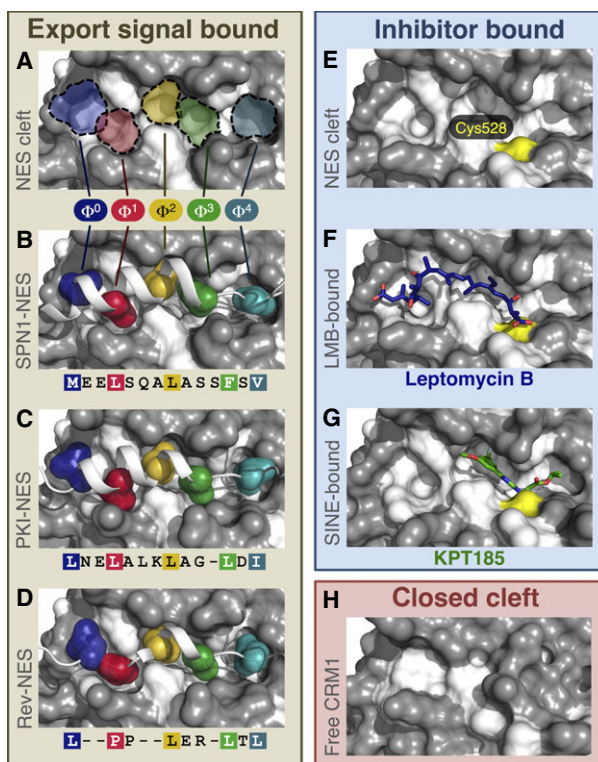


Fig. 5. Binding of nuclear export signals (NESs) and inhibitors to the NES cleft of CRM1. Detail view on the NES clefts of CRM1 bound to the SPN1-NES (A) and (B) (PDB ID [3GJX](#)), PKI-NES (C) (PDB ID [3NC1](#)) and Rev-NES (D) (PDB ID [3NBZ](#)). The SPN1-NES has been removed in (A) for clarity to show the dimensions of the cleft and the respective Φ -pockets (blue, Φ^0 ; red, Φ^1 ; yellow, Φ^2 ; green, Φ^3 ; teal, Φ^4). Note that the key residues of all three NESs occupy identical Φ -pockets and differences in the Φ -spacing are compensated by a different arrangement of the NES-peptide main chain. Blocking of the NES cleft by CRM1-specific inhibitors LMB (E) and (F) (PDB ID [4HAT](#)) as well as KPT185 (G) (PDB ID [4GMX](#)). LMB has been removed in (E) to show the dimensions of the occupied NES cleft. In the closed NES cleft of free CRM1 (H) (PDB ID [4FGV](#)) the Φ -pockets are inaccessible due to a 2.8 Å movement of helices 11A and 12A towards each other.

and 5B) [50,51,71]. Subsequent analysis of additional NESs of the cAMP-dependent protein kinase A inhibitor (PKI) and the HIV-1 protein Rev revealed that the identical pockets within the quite rigid NES cleft are used for binding of structurally distinct export signals (Fig. 5C,D). Because the five NES Φ -residues may

Fig. 3. Crystal structures of free CRM1 and CRM1-containing complexes. A surface representation of CRM1 (left panels) is shown gradient-colored from the N-terminus (dark gray) to the C-terminus (white) either alone or bound to various interaction partners (cartoon representation). Right panels show the conformation of the structural key features of CRM1 (cartoon representation) in the respective crystal structures of free CRM1 (A), a CRM1-RanGTP complex (B), a CRM1-cargo complex (C), a CRM1-RanGTP-cargo complex (D) and a disassembly complex (E). Proteins, originating organisms and key features are labeled and PDB IDs are given. AL, acidic loop; C helix, C-terminal helix. See main text for details.

exhibit different spacings in individual NESs, they require different arrangements of the NES-peptide chains to compensate for the differences in spacing (Fig. 5B,C,D) [71]. Moreover, the NES cleft of mammalian CRM1 contains a cysteine residue (Cys528 in human CRM1), which shows pronounced sensitivity to the CRM1-specific inhibitor LMB (Fig. 5E). Structural analysis revealed that LMB covalently modifies this cysteine in a Michael-type addition at the α,β -unsaturated δ -lactone moiety, and by spatial competition restricts binding of NESs to the binding cleft (Fig. 5F) [52,89,90]. Moreover, novel and small inhibitors of the SINE class (selective inhibitor of nuclear export) have been developed with the help of crystal structures which bind to the NES cleft and allow the (reversible) inhibition of CRM1-mediated export (Fig. 5G) [54,55].

In addition to the NES, other regions of SPN1 have been shown to play an important role in binding to the outer surface of CRM1. For example, the cap binding domain (CBD, amino acids 97–300) and C-terminal residues (amino acids 349–360) of SPN1 interact with A-helices of HEAT repeats 12–14 and 14–16, respectively (Figs 3C,D and 4) [18,50,51]. In general, other export cargoes might be recognized by a composite signal as well, e.g. the Rev protein mediating export of unspliced HIV-1 RNA [18,91]. Rev bears a second binding site interacting either as a compact entity like the SPN1-CBD or as a linear stretch with CRM1. This region strongly modulates the overall binding properties of Rev to CRM1 by a factor of 100

at sites corresponding to HEAT repeats 15 and 17 [91]. In fact, these HEAT repeats of CRM1 also interact with the C-terminal residues of SPN1 in the ternary CRM1-RanGTP-SPN1 export complex. Whether the regions surrounding the NES cleft of CRM1 are commonly used by other cargoes is still unclear, but the precise understanding of the binding mode of various cargoes would greatly help in the development of new potential CRM1 inhibitors for treatment of cancer. Interestingly, the surface of CRM1 reveals distinct charged and conserved patches in the vicinity of the NES cleft, which would enable cargoes with opposing surface charge to bind to other patches of CRM1 in addition to the common NES cleft interaction (Fig. 6, yellow contour).

The available structural information on CRM1 and its various export and disassembly complexes allowed the deduction of a detailed flowchart with the gross overall movements as well as the important interaction sites with Ran, cargo and disassembly factors (Ran-BPs) in the individual steps of a CRM1 transport cycle (Fig. 7).

Structural flexibility of CRM1 during the transport cycle

Assembly process

Free CRM1 in the nucleus serves as the starting point of the transport cycle. It has been shown that cargoes

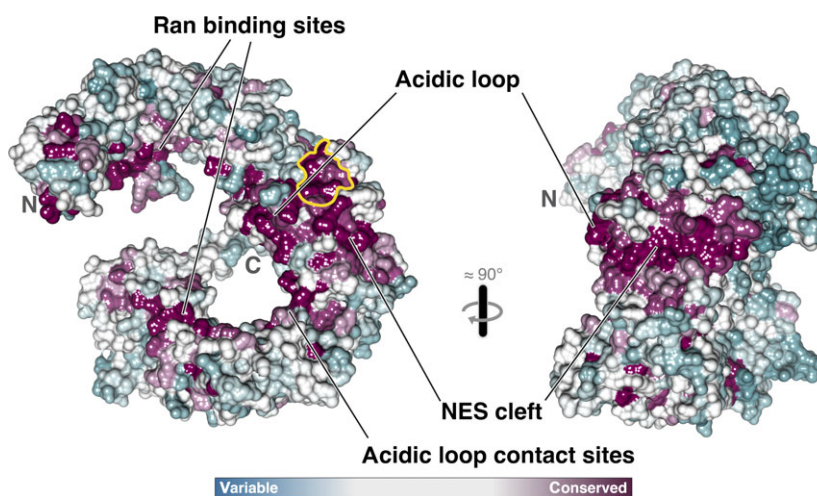


Fig. 6. Sequence conservation of CRM1 in the structural context of free CRM1 (PDB ID [4FGV](#)). CRM1 is depicted in two orthogonal views and surface colored according to sequence conservation from invariant (deep purple) to variable (deep teal). The left view is identical to the orientation of CRM1 in Fig. 3A. Note that crucial structural key features like the acidic loop, the NES cleft as well as binding sites for RanGTP and contact sites of N- and C-terminal parts of CRM1 are well conserved. Conservation coloring is based on a multiple sequence alignment of 16 CRM1 orthologs from yeast to human. A conserved area in the vicinity of the acidic loop and the NES cleft is encircled by a yellow line and would be available for interaction with alternative composite export signals different from the one of SPN1.

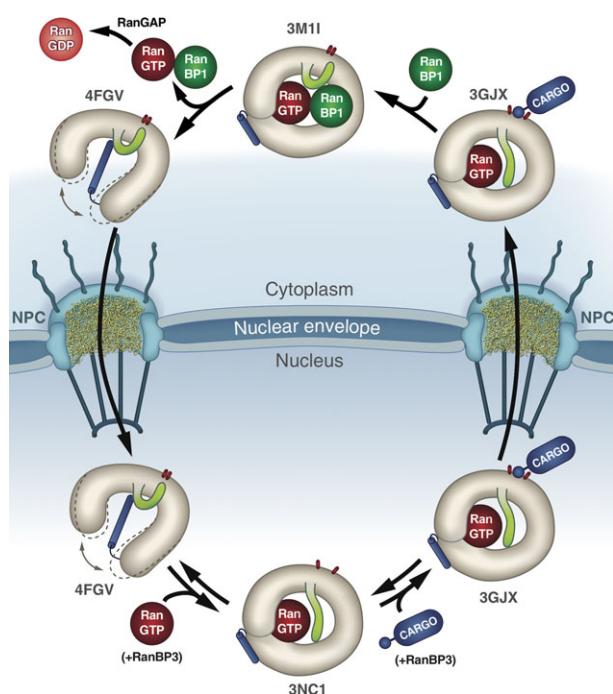


Fig. 7. Schematic overview of the individual steps and conformational changes during a CRM1 export cycle. The steps depicted highlight the different states of CRM1 (wheat) with respect to the overall shape as well as the positions of the acidic loop (light green), the C-terminal helix (HEAT helix 21B, blue) and the conformation of the NES cleft (red) during the transport cycle. The dashed line emanating from free CRM1 indicates its high structural flexibility. See main text for details.

in the absence of RanGTP have a relatively low affinity, which is increased strongly if RanGTP is present and *vice versa*. For the cargo SPN1, a binary CRM1-SPN1 complex has been described and crystallized rendering SPN1 an unusual cargo. This is further supported by the fact that in contrast to other cargoes the isolated NES of SPN1 has a rather low affinity for CRM1; however, this is more than compensated by the additional binding of the CBD and the C-terminal residues (Fig. 3D). Thus, at least for SPN1, two routes of export complex assembly (Ran or SPN1 first) could theoretically be envisioned. For each pathway crystal structures are available to provide structural information on a molecular level. However, since SPN1 is the exception rather than the rule, other cargoes are likely to associate stably only with a preformed CRM1-RanGTP complex (Fig. 7).

Structural investigations of free CRM1 (e.g. the cargo- and Ran-unbound form) have shown that it exists in two major conformations in equilibrium, namely an extended, superhelical conformation and a more compact, toroidal conformation (Fig. 8) [73,74].

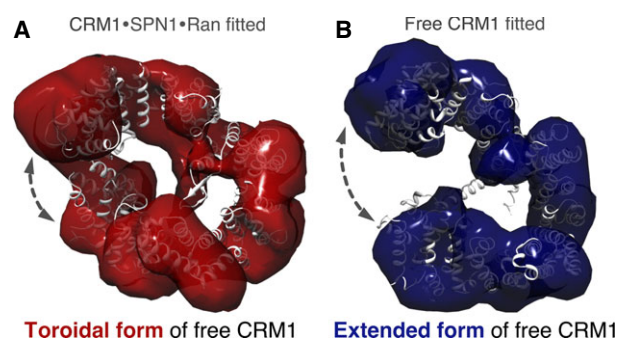


Fig. 8. Single-particle electron microscopy reconstructions of free *Chaetomium thermophilum* CRM1. CRM1 adopts toroidal (ring-like, red) (A) or extended (superhelical, blue) (B) conformations in a non-crystalline environment. The crystal structures of CRM1 in the ternary CRM1-RanGTP-SPN1 (PDB ID [3GJX](#)) export complex and free CRM1 (PDB ID [4FGV](#)) have been fitted into the toroidal and extended reconstruction, respectively.

Additionally, several crystal structures of the extended form have recently been determined at decent resolution and with reasonable model completeness (Table 1) [74,75] revealing an extended conformation of CRM1 entirely lacking interactions of the N- and C-terminal regions (Fig. 3A, left panel). Helix 21B is spanning the molecule reaching the opposing side of the superhelix (Fig. 3A, right panel) and touches the bases of HEAT repeats 9–12. The acidic loop in HEAT repeat 9 is oriented in a conformation binding to the B-helices of HEAT repeats 11 and 12 of CRM1, which form the NES cleft. Most probably these interactions stabilize the NES cleft in a closed conformation in free CRM1 thus precluding NES binding (Fig. 5H). Interestingly, the CRIME domain is quite distant to the other regions involved in RanGTP binding (Fig. 4), suggesting that RanGTP may freely access the N-terminal region of CRM1 in this state. Initial binding of RanGTP could trigger its progressive encircling by CRM1 (Fig. 3B). The helix 21B crossing the toroid in free CRM1 would clash with bound RanGTP (Fig. 3A). Thus, the displacement and rearrangement of this helix to the outside of the molecule (parallel orientation to helix 21A as in Fig. 3B) is a prerequisite for RanGTP binding. The large structural rearrangements of the acidic loop and the C-terminal helix of HEAT repeat 21 lead to a more compact structure with less superhelical pitch and tight interaction of N- and C-terminal regions mediated by a number of hydrogen bonds and salt bridges. Cooperativity is achieved by the movement of the acidic loop and its coupling to the NES cleft. After the release of the acidic loop from the back side of the NES cleft the equilibrium is shifted towards the open conformation,

which is prone for NES binding (Figs 3B and 5A). Consequently, the NES of a cargo can access the open NES cleft resulting in a locking of RanGTP by the acidic loop in the seatbelt conformation (Fig. 3B,D) and finally in an assembled functional export complex.

In the less extended, toroidal conformations that have been found to a varying extent in EM analysis (Fig. 8A) [73,74], the shape of CRM1 almost resembles that found in the CRM1-SPN1 complex (Fig. 3C). Interestingly, in this conformation helix 21B maintains the crossing position as observed in the extended, free conformation (Fig. 3C, right panel). However, the residues of the C-terminal acidic tail (amino acids 1063–1071 in human CRM1) are not defined in the electron density of the CRM1-SPN1 complex and thus are most probably disordered. This high congruence of the CRM1-SPN1 crystal structure to the EM model suggests that this conformation might be present already in solution and may be prone for binding to SPN1. This again shows the exceptional character of SPN1 as a CRM1 export cargo. In fact, SPN1 also seems to be an exceptional adapter for the nuclear import receptor importin β , as it exhibits different requirements for RanGTP-mediated release in comparison with other adapters like importin α [82,92]. In addition, for prototypical cargoes of CRM1, the nuclear RanGTP concentration *in vivo* might be significantly higher than the cargo concentration, and other auxiliary factors (e.g. RanBPs) are necessary for proper and efficient export complex formation. For example, RanBP3 is able to keep RanGTP bound to CRM1 for a prolonged time until an NES(-cargo) binds to the NES cleft and thus stabilizes the functional CRM1-RanGTP-cargo export complex [93].

Interestingly, the globular core domain of Ran in its GTP-bound state (excluding the C-terminal 36 residues) seems to be quite rigid in diverse crystal struc-

tures of transport receptor-RanGTP complexes (Table 2) [50,71,72,87,94,95]. This rigidity could be a requirement needed for the transduction of the cooperative effect from one side of CRM1 to the other binding site without direct interaction of RanGTP and cargo. Upon binding of RanGTP and/or auxiliary factors, the resulting structural changes on CRM1 are transduced via the key mediators, the acidic loop and the C-terminal helix to the still vacant cargo binding site, modulating its conformation to one prone for cargo binding (see above).

To sum up the assembly process of an export complex with a prototypical cargo, biochemical studies show a RanBP3-mediated stabilization of the CRM1-RanGTP complex, hence promoting formation of a stable CRM1-RanGTP-cargo complex. This prediction is in line with structural data available so far: RanGTP and SPN1 as a cargo both stabilize CRM1 in its toroidal form and favor conformations of the acidic loop and the C-terminal helix that promote binding of the second molecule. The fact that a binary complex of CRM1 with the exceptional cargo SPN1 is stable enough to be purified and crystallized may indicate additional functions of CRM1 in the SPN1 cycle. *In vivo* localization studies show an enrichment of SPN1 in cajal bodies if CRM1 is blocked by LMB [96]. SPN1 in complex with the UsnRNPs travels to the cajal bodies, where the final assembly of UsnRNPs is thought to occur [97,98]. Once SPN1 is released from the UsnRNP, CRM1 may take over a chaperone function thus blocking rebinding of UsnRNPs to SPN1. In fact, it becomes more and more evident that nuclear transport receptors in general, besides their pure transport function, play pivotal roles in quality control (e.g. exportin-t for tRNA quality control [99]) or as chaperones (e.g. co-import of histone H1 by importin β and importin 7 [100]).

When the ternary CRM1-RanGTP-cargo complex is assembled, it traverses the NPC central channel to the cytoplasmic side. Current models predict interactions between phenylalanine-glycine-rich repeats in Nups and the convex, outer surface of nuclear transport receptors facilitating effective translocation through the NPC to its cytoplasmic side.

Disassembly process

After passage through the NPC, the disassembly of the ternary export complex is accelerated by RanBPs, aiding Ran-mediated GTP hydrolysis. One of them, RanBP2 (Nup358), is localized directly at the cytoplasmic side of the pore bound to the filaments emanating from the NPC whereas the other, RanBP1, is a soluble

Table 2. The core domain of RanGTP (amino acids 1–170) is a rigid structure. RMSDs of known structures of RanGTP from different eukaryotes were compared with respect to structural differences.

PDB ID	Resolution (Å)	Comments	RanGTP RMSD _{Chain} (Å)
3GJX	2.50	CRM1-SPN1-Ran	Reference _C 0.13 _F
3NC1	3.35	CRM1-Ran	0.44 _C
2BKU	2.70	Importin β -Ran	0.48 _A 0.48 _C
1IBR	2.30	Importin β -Ran	0.40 _A 0.40 _C
1WA5	2.00	Cse1-importin α -Ran	0.42 _A
3M11	2.00	CRM1-Ran-RanBP1	0.44 _A

protein [101–104]. These two RanBPs have been shown to increase the low intrinsic hydrolysis rate of Ran and affinity for RanGAP1. Sumoylated RanGAP1 is tethered to RanBP2 securing spatial vicinity and availability of both factors at a time to facilitate GTP hydrolysis [12,13]. Structural analysis of RanBP1-bound CRM1 complexes revealed that binding of RanBPs to the CRM1-RanGTP-cargo complex induces significant changes in the CRM1 overall conformation (Fig. 3E). In detail, the binding of RanBP1 fixes the acidic C-terminal DEDDDL sequence (amino acids 211–216) of Ran in a position on CRM1, which leads to the displacement of the acidic loop. Such displacement is achieved by substitution of acidic loop residues involved in the interaction with the switch I region of Ran and the adjacent CRM1 surface [72]. This re-localization of the acidic loop from RanGTP to the proximity of HEAT-repeat helices 11B and 12B on the inner side of the CRM1 toroid is thought to confer mechanical strain onto the HEAT repeats 11A and 12A leading to a constriction of the NES cleft and thus mediating release of the NES cargo [72,73].

Subsequently, the RanGTP-RanBP complex has to dissociate from CRM1 in order to interact with RanGAP1. Hence, Ran-bound GTP is hydrolyzed to GDP by RanGAP1 in the presence of RanBPs. RanGDP in turn exhibits a very low affinity towards CRM1 or CRM1-cargo complexes preventing formation of a new export complex.

Upon full export complex disassembly, keeping the NES cleft of free CRM1 in a closed conformation might be supported by the C-terminal helix (HEAT 21B) of CRM1. This helix has been found in two different conformations, one oriented in a parallel fashion to the other helices when RanGTP is present (Fig. 3B,D) [50,71,72], whereas it bridges the central hole of CRM1 in all others [51,74,75] (Fig. 3A,C). Further investigations led to the model that a C-terminal acidic tail of CRM1 following HEAT 21B forms electrostatic interactions with a basic patch on HEAT repeat 12B located in the vicinity of the acidic loop binding site and thus contributes to regulation of the NES cleft binding capabilities [88].

It remains an open question whether the movement of the helix 21B occurs on its own. MD simulations did not point towards independent opening of CRM1 enabling the repositioning. Nevertheless, this opening could require longer time scales than simulated by MD experiments so far. More likely additional factors are required to facilitate such re-localization; for example RanGAP1 binding to RanGTP-RanBP in the CRM1 complex may induce opening of CRM1. In fact, such opening would be a prerequisite for the re-

localization of helix 21B to the final position observed in free CRM1.

Maintaining CRM1 in a free state for its traverse back into the nucleus is also possible by lowering the cytoplasmic pool of free cargo. For SPN1 it has been shown that importin β is able to displace it from the stable Ran-free SPN1-CRM1 complex *in vitro* [50]. This prevents rebinding to CRM1 and thus increases the probability that SPN1 binds its own cargo (UsnRNP core particles) by its CBD. In addition, for other cargoes it could be envisioned as well that cytoplasmic binding partners with a chaperoning function exist and are sufficient to prevent rebinding of the respective cargo to CRM1 independent of fixed positions for HEAT 21B and the acidic loop.

Cytoplasmic free CRM1 lacking any binding partners diffuses back into the nucleus for another round of export. Whether this occurs in a toroidal or extended overall conformation and whether the NES cleft remains closed during such passage due to its intrinsic properties or due to the binding of the acidic loop is still an open question.

Concluding remarks and future challenges

During the last decade, numerous crystal structures of CRM1 and CRM1 complexes have greatly facilitated the detailed understanding of CRM1 action and inhibition. CRM1 consists of 21 HEAT repeats and, depending on interacting partners, may adopt extended, superhelical (free form) or ring-shaped, toroidal conformations (in complexes). Bindings of RanGTP and cargo by CRM1 are cooperative events despite the fact that both molecules do not interact directly within an export complex. RanGTP is encircled by the B-helices of N-terminal HEAT repeats and additionally is kept in position by the acidic loop, while the cargo binds to A-helices of the central HEAT repeats located on the outer surface of CRM1. Key mediators of cooperativity are two regulatory regions of CRM1, the acidic loop and the C-terminal helix, which undergo large conformational rearrangements upon binding of a protein and thus transmit the binding information or facilitate a shift in the conformational equilibrium. Crucial hydrophobic Φ -residues of cargo-NESs neatly dock into the NES cleft of CRM1, which is formed between A-helices of HEAT repeats 11 and 12, and potent, mostly hydrophobic, inhibitors have been shown to block this cleft by spatial competition with cargoes. Moreover, crystal structures with the disassembly factor RanBP1 have shown how such stable export complexes can be resolved after NPC passage.

Although it may seem now that CRM1 action and inhibition is completely understood, there are still fundamental questions that remain to be solved. Future challenges are to unravel the molecular basis for the interaction of full-length prototypical cargoes like viral proteins or proto-oncogenes with CRM1 and the stabilization of such complexes by RanBP3. Moreover, it is currently unknown how more complex cargoes like ribosomal subunits, signal recognition particles or mRNAs are exported by CRM1. Although the first inhibitors of CRM1 are in clinical trials now, the structure-based development of highly effective CRM1 inhibitors with fewer side effects acting against various cancers is a formidable challenge. It remains a major and open question how the interaction of CRM1 with Nups is able to modulate the transition as well as the disassembly of CRM1 complexes. Finally, the structure–function understanding of alternative CRM1 functions, like in cell cycle control, is a major task and has just started.

Acknowledgements

We are grateful to Lin-Ta Hsu for assistance in figure preparation. This work was supported by the Deutsche Forschungsgemeinschaft Sonderforschungsbereich SFB860.

Author contributions

All authors contributed to structure analyses and writing the paper.

References

- Cook A, Bono F, Jinek M & Conti E (2007) Structural biology of nucleocytoplasmic transport. *Annu Rev Biochem* **76**, 647–671.
- Gorlich D & Kutay U (1999) Transport between the cell nucleus and the cytoplasm. *Annu Rev Cell Dev Biol* **15**, 607–660.
- Fornerod M, Ohno M, Yoshida M & Mattaj IW (1997) CRM1 is an export receptor for leucine-rich nuclear export signals. *Cell* **90**, 1051–1060.
- Kutay U, Bischoff FR, Kostka S, Kraft R & Gorlich D (1997) Export of importin alpha from the nucleus is mediated by a specific nuclear transport factor. *Cell* **90**, 1061–1071.
- Rexach M & Blobel G (1995) Protein import into nuclei: association and dissociation reactions involving transport substrate, transport factors, and nucleoporins. *Cell* **83**, 683–692.
- Gorlich D, Pante N, Kutay U, Aebi U & Bischoff FR (1996) Identification of different roles for RanGDP and RanGTP in nuclear protein import. *EMBO J* **15**, 5584–5594.
- Guttler T & Gorlich D (2011) Ran-dependent nuclear export mediators: a structural perspective. *EMBO J* **30**, 3457–3474.
- Kalab P, Weis K & Heald R (2002) Visualization of a Ran-GTP gradient in interphase and mitotic Xenopus egg extracts. *Science* **295**, 2452–2456.
- Smith AE, Slepchenko BM, Schaff JC, Loew LM & Macara IG (2002) Systems analysis of Ran transport. *Science* **295**, 488–491.
- Izaurrealde E, Kutay U, von Kobbe C, Mattaj IW & Gorlich D (1997) The asymmetric distribution of the constituents of the Ran system is essential for transport into and out of the nucleus. *EMBO J* **16**, 6535–6547.
- Bischoff FR, Klebe C, Kretschmer J, Wittinghofer A & Ponstingl H (1994) RanGAP1 induces GTPase activity of nuclear Ras-related Ran. *Proc Natl Acad Sci USA* **91**, 2587–2591.
- Mahajan R, Delphin C, Guan T, Gerace L & Melchior F (1997) A small ubiquitin-related polypeptide involved in targeting RanGAP1 to nuclear pore complex protein RanBP2. *Cell* **88**, 97–107.
- Matunis MJ, Coutavas E & Blobel G (1996) A novel ubiquitin-like modification modulates the partitioning of the Ran-GTPase-activating protein RanGAP1 between the cytosol and the nuclear pore complex. *J Cell Biol* **135**, 1457–1470.
- Makde RD, England JR, Yennawar HP & Tan S (2010) Structure of RCC1 chromatin factor bound to the nucleosome core particle. *Nature* **467**, 562–566.
- Bischoff FR & Ponstingl H (1991) Catalysis of guanine nucleotide exchange on Ran by the mitotic regulator RCC1. *Nature* **354**, 80–82.
- Fu SC, Huang HC, Horton P & Juan HF (2013) ValidNESS: a database of validated leucine-rich nuclear export signals. *Nucleic Acids Res* **41**, D338–D343.
- Xu D, Farmer A, Collett G, Grishin NV & Chook YM (2012) Sequence and structural analyses of nuclear export signals in the NESdb database. *Mol Biol Cell* **23**, 3677–3693.
- Paraskeva E, Izaurrealde E, Bischoff FR, Huber J, Kutay U, Hartmann E, Luhrmann R & Gorlich D (1999) CRM1-mediated recycling of snurportin 1 to the cytoplasm. *J Cell Biol* **145**, 255–264.
- Bohnsack MT, Regener K, Schwappach B, Saffrich R, Paraskeva E, Hartmann E & Gorlich D (2002) Exp5 exports eEF1A via tRNA from nuclei and synergizes with other transport pathways to confine translation to the cytoplasm. *EMBO J* **21**, 6205–6215.

- 20 Fischer U, Meyer S, Teufel M, Heckel C, Luhrmann R & Rautmann G (1994) Evidence that HIV-1 Rev directly promotes the nuclear export of unspliced RNA. *EMBO J* **13**, 4105–4112.
- 21 Fischer U, Huber J, Boelens WC, Mattaj IW & Luhrmann R (1995) The HIV-1 Rev activation domain is a nuclear export signal that accesses an export pathway used by specific cellular RNAs. *Cell* **82**, 475–483.
- 22 Wen W, Meinkoth JL, Tsien RY & Taylor SS (1995) Identification of a signal for rapid export of proteins from the nucleus. *Cell* **82**, 463–473.
- 23 Jang BC, Munoz-Najar U, Paik JH, Claffey K, Yoshida M & Hla T (2003) Leptomycin B, an inhibitor of the nuclear export receptor CRM1, inhibits COX-2 expression. *J Biol Chem* **278**, 2773–2776.
- 24 Higashino F, Aoyagi M, Takahashi A, Ishino M, Taoka M, Isobe T, Kobayashi M, Totsuka Y, Kohgo T & Shindoh M (2005) Adenovirus E4orf6 targets pp32/LANP to control the fate of ARE-containing mRNAs by perturbing the CRM1-dependent mechanism. *J Cell Biol* **170**, 15–20.
- 25 Brennan CM, Gallouzi IE & Steitz JA (2000) Protein ligands to HuR modulate its interaction with target mRNAs *in vivo*. *J Cell Biol* **151**, 1–14.
- 26 Culjkovic B, Topisirovic I, Skrabanek L, Ruiz-Gutierrez M & Borden KL (2006) eIF4E is a central node of an RNA regulon that governs cellular proliferation. *J Cell Biol* **175**, 415–426.
- 27 Ciuffo LF & Brown JD (2000) Nuclear export of yeast signal recognition particle lacking Srp54p by the Xpo1p/Crm1p NES-dependent pathway. *Curr Biol* **10**, 1256–1264.
- 28 Ho JH, Kallstrom G & Johnson AW (2000) Nmd3p is a Crm1p-dependent adapter protein for nuclear export of the large ribosomal subunit. *J Cell Biol* **151**, 1057–1066.
- 29 Moy TI & Silver PA (2002) Requirements for the nuclear export of the small ribosomal subunit. *J Cell Sci* **115**, 2985–2995.
- 30 Adachi Y & Yanagida M (1989) Higher order chromosome structure is affected by cold-sensitive mutations in a *Schizosaccharomyces pombe* gene *crm1+* which encodes a 115-kD protein preferentially localized in the nucleus and its periphery. *J Cell Biol* **108**, 1195–1207.
- 31 Toda T, Shimanuki M, Saka Y, Yamano H, Adachi Y, Shirakawa M, Kyogoku Y & Yanagida M (1992) Fission yeast *pap1*-dependent transcription is negatively regulated by an essential nuclear protein, *crm1*. *Mol Cell Biol* **12**, 5474–5484.
- 32 Nishi K, Yoshida M, Fujiwara D, Nishikawa M, Horinouchi S & Beppu T (1994) Leptomycin B targets a regulatory cascade of *crm1*, a fission yeast nuclear protein, involved in control of higher order chromosome structure and gene expression. *J Biol Chem* **269**, 6320–6324.
- 33 Turi TG, Webster P & Rose JK (1994) Brefeldin A sensitivity and resistance in *Schizosaccharomyces pombe*. Isolation of multiple genes conferring resistance. *J Biol Chem* **269**, 24229–24236.
- 34 Fornerod M, Boer J, van Baal S, Morreau H & Grosveld G (1996) Interaction of cellular proteins with the leukemia specific fusion proteins DEK-CAN and SET-CAN and their normal counterpart, the nucleoporin CAN. *Oncogene* **13**, 1801–1808.
- 35 Fornerod M, van Deursen J, van Baal S, Reynolds A, Davis D, Murti KG, Fransen J & Grosveld G (1997) The human homologue of yeast CRM1 is in a dynamic subcomplex with CAN/Nup214 and a novel nuclear pore component Nup88. *EMBO J* **16**, 807–816.
- 36 Kudo N, Khochbin S, Nishi K, Kitano K, Yanagida M, Yoshida M & Horinouchi S (1997) Molecular cloning and cell cycle-dependent expression of mammalian CRM1, a protein involved in nuclear export of proteins. *J Biol Chem* **272**, 29742–29751.
- 37 Fukuda M, Asano S, Nakamura T, Adachi M, Yoshida M, Yanagida M & Nishida E (1997) CRM1 is responsible for intracellular transport mediated by the nuclear export signal. *Nature* **390**, 308–311.
- 38 Neville M, Stutz F, Lee L, Davis LI & Rosbash M (1997) The importin-beta family member Crm1p bridges the interaction between Rev and the nuclear pore complex during nuclear export. *Curr Biol* **7**, 767–775.
- 39 Ossareh-Nazari B, Bachelier F & Dargemont C (1997) Evidence for a role of CRM1 in signal-mediated nuclear protein export. *Science* **278**, 141–144.
- 40 Stade K, Ford CS, Guthrie C & Weis K (1997) Exportin 1 (Crm1p) is an essential nuclear export factor. *Cell* **90**, 1041–1050.
- 41 Kehlenbach RH, Dickmanns A & Gerace L (1998) Nucleocytoplasmic shuttling factors including Ran and CRM1 mediate nuclear export of NFAT *in vitro*. *J Cell Biol* **141**, 863–874.
- 42 Ohno M, Segref A, Bachi A, Wilm M & Mattaj IW (2000) PHAX, a mediator of U snRNA nuclear export whose activity is regulated by phosphorylation. *Cell* **101**, 187–198.
- 43 Segref A, Mattaj IW & Ohno M (2001) The evolutionarily conserved region of the U snRNA export mediator PHAX is a novel RNA-binding domain that is essential for U snRNA export. *RNA* **7**, 351–360.
- 44 Turner JG, Dawson J & Sullivan DM (2012) Nuclear export of proteins and drug resistance in cancer. *Biochem Pharmacol* **83**, 1021–1032.
- 45 Lu FM, Gladden AB & Diehl JA (2003) An alternatively spliced cyclin D1 isoform, cyclin D1b, is a nuclear oncogene. *Cancer Res* **63**, 7056–7061.

- 46 Chen L, Moore JE, Samathanam C, Shao C, Cobos E, Miller MS & Gao W (2011) CRM1-dependent p53 nuclear accumulation in lung lesions of a bitransgenic mouse lung tumor model. *Oncol Rep* **26**, 223–228.
- 47 Kanai M, Hanashiro K, Kim SH, Hanai S, Boulares AH, Miwa M & Fukasawa K (2007) Inhibition of Crm1-p53 interaction and nuclear export of p53 by poly(ADP-ribosylation). *Nat Cell Biol* **9**, 1175–1183.
- 48 Nguyen KT, Holloway MP & Altura RA (2012) The CRM1 nuclear export protein in normal development and disease. *Int J Biochem Mol Biol* **3**, 137–151.
- 49 Wolff B, Sanglier JJ & Wang Y (1997) Leptomycin B is an inhibitor of nuclear export: inhibition of nucleocytoplasmic translocation of the human immunodeficiency virus type 1 (HIV-1) Rev protein and Rev-dependent mRNA. *Chem Biol* **4**, 139–147.
- 50 Monecke T, Guttler T, Neumann P, Dickmanns A, Gorlich D & Ficner R (2009) Crystal structure of the nuclear export receptor CRM1 in complex with Snurportin1 and RanGTP. *Science* **324**, 1087–1091.
- 51 Dong X, Biswas A, Suel KE, Jackson LK, Martinez R, Gu H & Chook YM (2009) Structural basis for leucine-rich nuclear export signal recognition by CRM1. *Nature* **458**, 1136–1141.
- 52 Sun Q, Carrasco YP, Hu Y, Guo X, Mirzaei H, Macmillan J & Chook YM (2013) Nuclear export inhibition through covalent conjugation and hydrolysis of Leptomycin B by CRM1. *Proc Natl Acad Sci USA* **110**, 1303–1308.
- 53 Mutka SC, Yang WQ, Dong SD, Ward SL, Craig DA, Timmermans PB & Murlis S (2009) Identification of nuclear export inhibitors with potent anticancer activity *in vivo*. *Cancer Res* **69**, 510–517.
- 54 Lapalombella R, Sun Q, Williams K, Tangeman L, Jha S, Zhong Y, Goettl V, Mahoney E, Berglund C, Gupta S *et al.* (2012) Selective inhibitors of nuclear export show that CRM1/XPO1 is a target in chronic lymphocytic leukemia. *Blood* **120**, 4621–4634.
- 55 Etchin J, Sun Q, Kentsis A, Farmer A, Zhang ZC, Sanda T, Mansour MR, Barcelo C, McCauley D, Kauffman M, *et al.* (2013) Antileukemic activity of nuclear export inhibitors that spare normal hematopoietic cells. *Leukemia* **27**, 66–74.
- 56 Inoue H, Kauffman M, Shacham S, Landesman Y, Yang J, Evans CP & Weiss RH (2013) CRM1 blockade by selective inhibitors of nuclear export attenuates kidney cancer growth. *J Urol* **189**, 2317–2326.
- 57 Zhang K, Wang M, Tamayo AT, Shacham S, Kauffman M, Lee J, Zhang L, Ou Z, Li C, Sun L *et al.* (2013) Novel selective inhibitors of nuclear export CRM1 antagonists for therapy in mantle cell lymphoma. *Exp Hematol* **41**, 67–78.
- 58 Ranganathan P, Yu X, Na C, Santhanam R, Shacham S, Kauffman M, Walker A, Klisovic R, Blum W, Caligiuri M *et al.* (2012) Preclinical activity of a novel CRM1 inhibitor in acute myeloid leukemia. *Blood* **120**, 1765–1773.
- 59 Azmi AS, Aboukameel A, Bao B, Sarkar FH, Philip PA, Kauffman M, Shacham S & Mohammad RM (2013) Selective inhibitors of nuclear export block pancreatic cancer cell proliferation and reduce tumor growth in mice. *Gastroenterology* **144**, 447–456.
- 60 Salas Fragomeni RA, Chung HW, Landesman Y, Senapedis W, Saint-Martin JR, Tsao H, Flaherty KT, Shacham S, Kauffman M & Cusack JC (2013) CRM1 and BRAF inhibition synergize and induce tumor regression in BRAF-mutant melanoma. *Mol Cancer Ther* **12**, 1171–1179.
- 61 Etchin J, Sanda T, Mansour MR, Kentsis A, Montero J, Le BT, Christie AL, McCauley D, Rodig SJ, Kauffman M, *et al.* (2013) KPT-330 inhibitor of CRM1 (XPO1)-mediated nuclear export has selective anti-leukaemic activity in preclinical models of T-cell acute lymphoblastic leukaemia and acute myeloid leukaemia. *Br J Haematol* **161**, 117–127.
- 62 Inoue H, Kauffman M, Shacham S, Landesman Y, Yang J, Evans CP & Weiss RH (2012) CRM1 blockade by selective inhibitors of nuclear export (SINE) attenuates kidney cancer growth. *J Urol* **189**, 2317–2326.
- 63 Kojima K, Kornblau SM, Ruvolo V, Dilip A, Duvvuri S, Davis RE, Zhang M, Wang Z, Coombes KR, Zhang N *et al.* (2013) Prognostic impact and targeting of CRM1 in acute myeloid leukemia. *Blood* **121**, 4166–4174.
- 64 Roscioli E, Di Francesco L, Bolognesi A, Giubettini M, Orlando S, Harel A, Schinina ME & Lavia P (2012) Importin-beta negatively regulates multiple aspects of mitosis including RANGAP1 recruitment to kinetochores. *J Cell Biol* **196**, 435–450.
- 65 Di Fiore B, Ciciarello M & Lavia P (2004) Mitotic functions of the Ran GTPase network: the importance of being in the right place at the right time. *Cell Cycle* **3**, 305–313.
- 66 Arnaoutov A, Azuma Y, Ribbeck K, Joseph J, Boyarchuk Y, Karpova T, McNally J & Dasso M (2005) Crm1 is a mitotic effector of Ran-GTP in somatic cells. *Nat Cell Biol* **7**, 626–632.
- 67 Wang W, Budhu A, Forgues M & Wang XW (2005) Temporal and spatial control of nucleophosmin by the Ran-Crm1 complex in centrosome duplication. *Nat Cell Biol* **7**, 823–830.
- 68 Torosantucci L, De Luca M, Guarguaglini G, Lavia P & Degrossi F (2008) Localized RanGTP accumulation promotes microtubule nucleation at kinetochores in somatic mammalian cells. *Mol Biol Cell* **19**, 1873–1882.
- 69 Roscioli E, Bolognesi A, Guarguaglini G & Lavia P (2010) Ran control of mitosis in human cells:

- gradients and local signals. *Biochem Soc Trans* **38**, 1709–1714.
- 70 Petosa C, Schoehn G, Askjaer P, Bauer U, Moulin M, Steuerwald U, Soler-Lopez M, Baudin F, Mattaj IW & Muller CW (2004) Architecture of CRM1/Exportin1 suggests how cooperativity is achieved during formation of a nuclear export complex. *Mol Cell* **16**, 761–775.
- 71 Guttler T, Madl T, Neumann P, Deichsel D, Corsini L, Monecke T, Ficner R, Sattler M & Gorlich D (2010) NES consensus redefined by structures of PKI-type and Rev-type nuclear export signals bound to CRM1. *Nat Struct Mol Biol* **17**, 1367–1376.
- 72 Koyama M & Matsuura Y (2010) An allosteric mechanism to displace nuclear export cargo from CRM1 and RanGTP by RanBP1. *EMBO J* **29**, 2002–2013.
- 73 Dolker N, Blanchet CE, Voss B, Haselbach D, Kappel C, Monecke T, Svergun DI, Stark H, Ficner R, Zachariae U *et al.* (2013) Structural determinants and mechanism of mammalian CRM1 allostery. *Structure* **21**, 1350–1360.
- 74 Monecke T, Haselbach D, Voß B, Russek A, Neumann P, Thomson E, Hurt E, Zachariae U, Stark H, Grubmuller H *et al.* (2013) Structural basis for cooperativity of CRM1 export complex formation. *Proc Natl Acad Sci USA* **110**, 960–965.
- 75 Saito N & Matsuura Y (2013) A 2.1-Å-resolution crystal structure of unliganded CRM1 reveals the mechanism of autoinhibition. *J Mol Biol* **425**, 350–364.
- 76 Dian C, Bernaudat F, Langer K, Oliva MF, Fornerod M, Schoehn G, Muller CW & Petosa C (2013) Structure of a truncation mutant of the nuclear export factor CRM1 provides insights into the auto-inhibitory role of its C-terminal helix. *Structure* **21**, 1338–1349.
- 77 Andrade MA & Bork P (1995) HEAT repeats in the Huntington's disease protein. *Nat Genet* **11**, 115–116.
- 78 Andrade MA, Perez-Iratxeta C & Ponting CP (2001) Protein repeats: structures, functions, and evolution. *J Struct Biol* **134**, 117–131.
- 79 Cingolani G, Petosa C, Weis K & Muller CW (1999) Structure of importin-beta bound to the IBB domain of importin-alpha. *Nature* **399**, 221–229.
- 80 Lee SJ, Sekimoto T, Yamashita E, Nagoshi E, Nakagawa A, Imamoto N, Yoshimura M, Sakai H, Chong KT, Tsukihara T *et al.* (2003) The structure of importin-beta bound to SREBP-2: nuclear import of a transcription factor. *Science* **302**, 1571–1575.
- 81 Liu SM & Stewart M (2005) Structural basis for the high-affinity binding of nucleoporin Nup1p to the *Saccharomyces cerevisiae* importin-beta homologue, Kap95p. *J Mol Biol* **349**, 515–525.
- 82 Wohllwend D, Strasser A, Dickmanns A & Ficner R (2007) Structural basis for RanGTP independent entry of spliceosomal U snRNPs into the nucleus. *J Mol Biol* **374**, 1129–1138.
- 83 Zachariae U & Grubmuller H (2008) Importin-beta: structural and dynamic determinants of a molecular spring. *Structure* **16**, 906–915.
- 84 Kappel C, Zachariae U, Dolker N & Grubmuller H (2010) An unusual hydrophobic core confers extreme flexibility to HEAT repeat proteins. *Biophys J* **99**, 1596–1603.
- 85 Gorlich D, Dabrowski M, Bischoff FR, Kutay U, Bork P, Hartmann E, Prehn S & Izaurralde E (1997) A novel class of RanGTP binding proteins. *J Cell Biol* **138**, 65–80.
- 86 Chook YM & Blobel G (1999) Structure of the nuclear transport complex karyopherin-beta2-Ran x GppNHp. *Nature* **399**, 230–237.
- 87 Vetter IR, Arndt A, Kutay U, Gorlich D & Wittinghofer A (1999) Structural view of the Ran-importin beta interaction at 2.3 Å resolution. *Cell* **97**, 635–646.
- 88 Fox AM, Ciziene D, McLaughlin SH & Stewart M (2011) Electrostatic interactions involving the extreme C terminus of nuclear export factor CRM1 modulate its affinity for cargo. *J Biol Chem* **286**, 29325–29335.
- 89 Kudo N, Matsumori N, Taoka H, Fujiwara D, Schreiner EP, Wolff B, Yoshida M & Horinouchi S (1999) Leptomycin B inactivates CRM1/exportin 1 by covalent modification at a cysteine residue in the central conserved region. *Proc Natl Acad Sci USA* **96**, 9112–9117.
- 90 Kudo N, Wolff B, Sekimoto T, Schreiner EP, Yoneda Y, Yanagida M, Horinouchi S & Yoshida M (1998) Leptomycin B inhibition of signal-mediated nuclear export by direct binding to CRM1. *Exp Cell Res* **242**, 540–547.
- 91 Askjaer P, Jensen TH, Nilsson J, Englmeier L & Kjems J (1998) The specificity of the CRM1-Rev nuclear export signal interaction is mediated by RanGTP. *J Biol Chem* **273**, 33414–33422.
- 92 Huber J, Dickmanns A & Luhrmann R (2002) The importin-beta binding domain of snurportin1 is responsible for the Ran- and energy-independent nuclear import of spliceosomal U snRNPs *in vitro*. *J Cell Biol* **156**, 467–479.
- 93 Langer K, Dian C, Rybin V, Muller CW & Petosa C (2011) Insights into the function of the CRM1 cofactor RanBP3 from the structure of its Ran-binding domain. *PLoS ONE* **6**, e17011.
- 94 Matsuura Y & Stewart M (2004) Structural basis for the assembly of a nuclear export complex. *Nature* **432**, 872–877.
- 95 Lee SJ, Matsuura Y, Liu SM & Stewart M (2005) Structural basis for nuclear import complex dissociation by RanGTP. *Nature* **435**, 693–696.

- 96 Ospina JK, Gonsalvez GB, Bednenko J, Darzynkiewicz E, Gerace L & Matera AG (2005) Cross-talk between snurportin1 subdomains. *Mol Biol Cell* **16**, 4660–4671.
- 97 Sleeman JE & Lamond AI (1999) Newly assembled snRNPs associate with coiled bodies before speckles, suggesting a nuclear snRNP maturation pathway. *Curr Biol* **9**, 1065–1074.
- 98 Sleeman JE, Ajuh P & Lamond AI (2001) snRNP protein expression enhances the formation of Cajal bodies containing p80-coilin and SMN. *J Cell Sci* **114**, 4407–4419.
- 99 Cook AG, Fukuhara N, Jinek M & Conti E (2009) Structures of the tRNA export factor in the nuclear and cytosolic states. *Nature* **461**, 60–65.
- 100 Jakel S, Albig W, Kutay U, Bischoff FR, Schwamborn K, Doenecke D & Gorlich D (1999) The importin beta/importin 7 heterodimer is a functional nuclear import receptor for histone H1. *EMBO J* **18**, 2411–2423.
- 101 Kehlenbach RH, Dickmanns A, Kehlenbach A, Guan T & Gerace L (1999) A role for RanBP1 in the release of CRM1 from the nuclear pore complex in a terminal step of nuclear export. *J Cell Biol* **145**, 645–657.
- 102 Bischoff FR & Gorlich D (1997) RanBP1 is crucial for the release of RanGTP from importin beta-related nuclear transport factors. *FEBS Lett* **419**, 249–254.
- 103 Bischoff FR, Krebber H, Smirnova E, Dong W & Ponstingl H (1995) Co-activation of RanGTPase and inhibition of GTP dissociation by Ran-GTP binding protein RanBP1. *EMBO J* **14**, 705–715.
- 104 Bernad R, van der Velde H, Fornerod M & Pickersgill H (2004) Nup358/RanBP2 attaches to the nuclear pore complex via association with Nup88 and Nup214/CAN and plays a supporting role in CRM1-mediated nuclear protein export. *Mol Cell Biol* **24**, 2373–2384.