



## ORIGINAL ARTICLE

# Efficacy of RyR2 inhibitor EL20 in induced pluripotent stem cell-derived cardiomyocytes from a patient with catecholaminergic polymorphic ventricular tachycardia

Tarah A. Word<sup>1</sup> | Ann P. Quick<sup>2</sup> | Christina Miyake<sup>1,2</sup> | Mayra K. Shak<sup>1</sup> | Xiaolu Pan<sup>1</sup> | Jean J. Kim<sup>3</sup> | Hugh D. Allen<sup>3</sup> | Martha Sibrian-Vazquez<sup>4</sup> | Robert M. Strongin<sup>5</sup> | Andrew P. Landstrom<sup>6,7</sup>  | Xander H. T. Wehrens<sup>1,2,8,9,10</sup> 

<sup>1</sup>Department of Molecular Physiology & Biophysics, Cardiovascular Research Institute, Baylor College of Medicine, Houston, TX, USA

<sup>2</sup>Section of Cardiology, Department of Pediatrics, Baylor College of Medicine, Houston, TX, USA

<sup>3</sup>Department of Molecular & Cellular Biology, Stem Cells and Regenerative Medicine Center, Baylor College of Medicine, Houston, TX, USA

<sup>4</sup>Elex Biotech Inc, Portland, OR, USA

<sup>5</sup>Department of Chemistry, Portland State University, Portland, OR, USA

<sup>6</sup>Department of Pediatrics, Division of Cardiology, Duke University School of Medicine, Durham, NC, USA

<sup>7</sup>Department of Cell Biology, Duke University School of Medicine, Durham, NC, USA

<sup>8</sup>Department of Medicine, Section of Cardiology, Baylor College of Medicine, Houston, TX, USA

<sup>9</sup>Department of Neuroscience, Section of Cardiology, Baylor College of Medicine, Houston, TX, USA

<sup>10</sup>Center for Space Medicine, Baylor College of Medicine, Houston, TX, USA

## Correspondence

Andrew P. Landstrom, Department of Pediatrics, Duke University Medical Center, Box 2652, Durham, NC 27710, USA.  
Email: andrew.landstrom@duke.edu

Xander H. T. Wehrens, Cardiovascular Research Institute, Baylor College of Medicine, One Baylor Plaza, BCM335, Houston, TX 77030, USA.  
Email: wehrens@bcm.edu

## Funding information

This work was supported by the NIH grants 1T32 HL139430-01A1 (TAW), R01-HL089598, R01-HL091947, R01-HL117641 (XHTW), K08-HL136839 (APL); and a grant from Saving Tiny Hearts Society (XHTW)

## Abstract

Catecholaminergic polymorphic ventricular tachycardia (CPVT) is an inherited cardiac arrhythmia syndrome that often leads to sudden cardiac death. The most common form of CPVT is caused by autosomal-dominant variants in the cardiac ryanodine receptor type-2 (*RYR2*) gene. Mutations in *RYR2* promote calcium ( $\text{Ca}^{2+}$ ) leak from the sarcoplasmic reticulum (SR), triggering lethal arrhythmias. Recently, it was demonstrated that tetracaine derivative EL20 specifically inhibits mutant RyR2, normalizes  $\text{Ca}^{2+}$  handling and suppresses arrhythmias in a CPVT mouse model. The objective of this study was to determine whether EL20 normalizes SR  $\text{Ca}^{2+}$  handling and arrhythmic events in induced pluripotent stem cell-derived cardiomyocytes (iPSC-CMs) from a CPVT patient. Blood samples from a child carrying RyR2 variant RyR2 variant Arg-176-Glu (R176Q) and a mutation-negative relative were reprogrammed into iPSCs using a Sendai virus system. iPSC-CMs were derived using the Stendiff™ kit. Confocal  $\text{Ca}^{2+}$  imaging was used to quantify RyR2 activity in the absence and presence of EL20. iPSC-CMs harbouring the R176Q variant demonstrated spontaneous SR  $\text{Ca}^{2+}$  release events, whereas administration of EL20 diminished these abnormal events at low nanomolar concentrations ( $\text{IC}_{50} = 82 \text{ nM}$ ). Importantly, treatment with EL20 did not have any adverse effects on systolic  $\text{Ca}^{2+}$  handling in control iPSC-CMs.

This is an open access article under the terms of the Creative Commons Attribution License, which permits use, distribution and reproduction in any medium, provided the original work is properly cited.

© 2021 The Authors. *Journal of Cellular and Molecular Medicine* published by Foundation for Cellular and Molecular Medicine and John Wiley & Sons Ltd.

Our results show for the first time that tetracaine derivative EL20 normalized SR Ca<sup>2+</sup> handling and suppresses arrhythmogenic activity in iPSC-CMs derived from a CPVT patient. Hence, this study confirms that this RyR2-inhibitor represents a promising therapeutic candidate for treatment of CPVT.

#### KEYWORDS

Catecholaminergic polymorphic ventricular tachycardia, induced pluripotent stem cells, ryanodine receptors, RyR2, tetracaine, ventricular arrhythmia

## 1 | INTRODUCTION

Catecholaminergic polymorphic ventricular tachycardia (CPVT) is a life-threatening inherited cardiac arrhythmia syndrome that can lead to sudden cardiac arrest and death at a very high rate if left untreated. It is characterized by polymorphic and/or bi-directional ventricular tachycardia (VT) that is triggered by  $\beta$ -adrenergic stimulation associated with vigorous exercise or emotional stress.<sup>1</sup> The prevalence of CPVT is estimated to be around 1:5000 to 1:10 000; both sexes are affected equally. The most common form of CPVT is caused by autosomal-dominant variants in the *RYR2* gene encoding the cardiac ryanodine receptor type-2.<sup>2,3</sup> The RyR2 channel releases Ca<sup>2+</sup> from the sarcoplasmic reticulum (SR) in response to electrical excitation of the plasma membrane, which leads to influx of Ca<sup>2+</sup> via the L-type Ca<sup>2+</sup> channel. Variants in *RYR2* promote diastolic SR Ca<sup>2+</sup> leak which causes triggered activity and can initiate arrhythmias seen in CPVT.<sup>1,4</sup>

Although CPVT is one of the most lethal forms of inherited cardiac disease, current treatment options remain limited.  $\beta$ -adrenoreceptor blockers only control symptoms and suppress arrhythmias in about 30%-50% of patients.<sup>5</sup> Flecainide—a class 1C Na<sup>+</sup> channel blocker that also normalizes RyR2 activity—has shown potential in CPVT patients but also has a black box warning for patients with any kind of structural heart disease.<sup>6,7</sup> Implantable cardioverter-defibrillators (ICDs) are used in the event of severe or recurrent arrhythmias, but ICD discharges may further aggravate catecholamine release and lead to electrical storm.<sup>8</sup> Hence, there remains an unmet need to develop new pharmacological or biological agents for the treatment of CPVT that specifically correct disease-causing molecular defects.

Several classes of drugs have been developed that target mutant or dysfunctional RyR2 channels.<sup>9</sup> These include, among others, benzothiazepine derivatives (K201, S107),<sup>10,11</sup> tetracaine derivatives (EL9, EL20),<sup>12,13</sup> class 1C anti-arrhythmic drug derivatives of flecainide and propafenone,<sup>14</sup> hydantoin derivatives (such as dantrolene),<sup>15</sup> non-beta blocking carvedilol derivatives<sup>16</sup> and unnatural verticillide enantiomers.<sup>17</sup> The efficacy of these compounds have been evaluated in various knock-in mouse models carrying RyR2 variants or calsequestrin-2 variants/knockout.<sup>11,12,14,18</sup> For example, mice heterozygous for RyR2 variant Arg-176-Glu (R176Q) are susceptible to ventricular tachycardia after injection of caffeine and epinephrine, or following programmed ventricular stimulation and administration of  $\beta$ -adrenergic receptor agonist isoproterenol (ISO).<sup>18</sup>

We recently demonstrated that tetracaine derivative EL20 can normalize aberrant SR Ca<sup>2+</sup> leak associated with CPVT in the R176Q mouse

model.<sup>13</sup> The half-maximum inhibitory concentration of EL20 in mouse myocytes was 35.4 mmol/L,<sup>13</sup> which was an order of magnitude better than that of another well-studied RyR2 inhibitor JTV519 (K201).<sup>12</sup> This tetracaine derivative does not block Na<sup>+</sup> or I<sub>Kr</sub> channels within the effective concentration range used to inhibit RyR2 channels and has a favourable plasma stability profile (data not shown). In addition, tetracaine derivatives appear to work for all gain-of-function RyR2 variants, which represent the vast majority (>95%) of all known CPVT-causing variants (>150 described to date). It remains unclear, however, whether a compound like EL20 also normalizes CPVT-mutant RyR2 in human cardiac myocytes. Therefore, we developed induced pluripotent stem cell-derived cardiomyocytes (iPSC-CMs) from a CPVT patient carrying the same R176Q variant in *RYR2*. Confocal imaging revealed that EL20 effectively suppresses the enhanced Ca<sup>2+</sup> spark frequency observed in iPSC-CMs from this CPVT patient. These findings suggest that this RyR2-inhibitor represents a promising therapeutic candidate for treatment of CPVT patients.

## 2 | MATERIALS AND METHODS

### 2.1 | Human subject recruitment

All studies were approved by the Baylor College of Medicine IRB and follow the Declaration of Helsinki guidelines. Subjects were evaluated by a paediatric electrophysiologist and a history, physical examination, echocardiogram, electrocardiogram and ancillary testing were performed. Following written receipt of informed consent, whole blood was obtained from the proband and kindred.

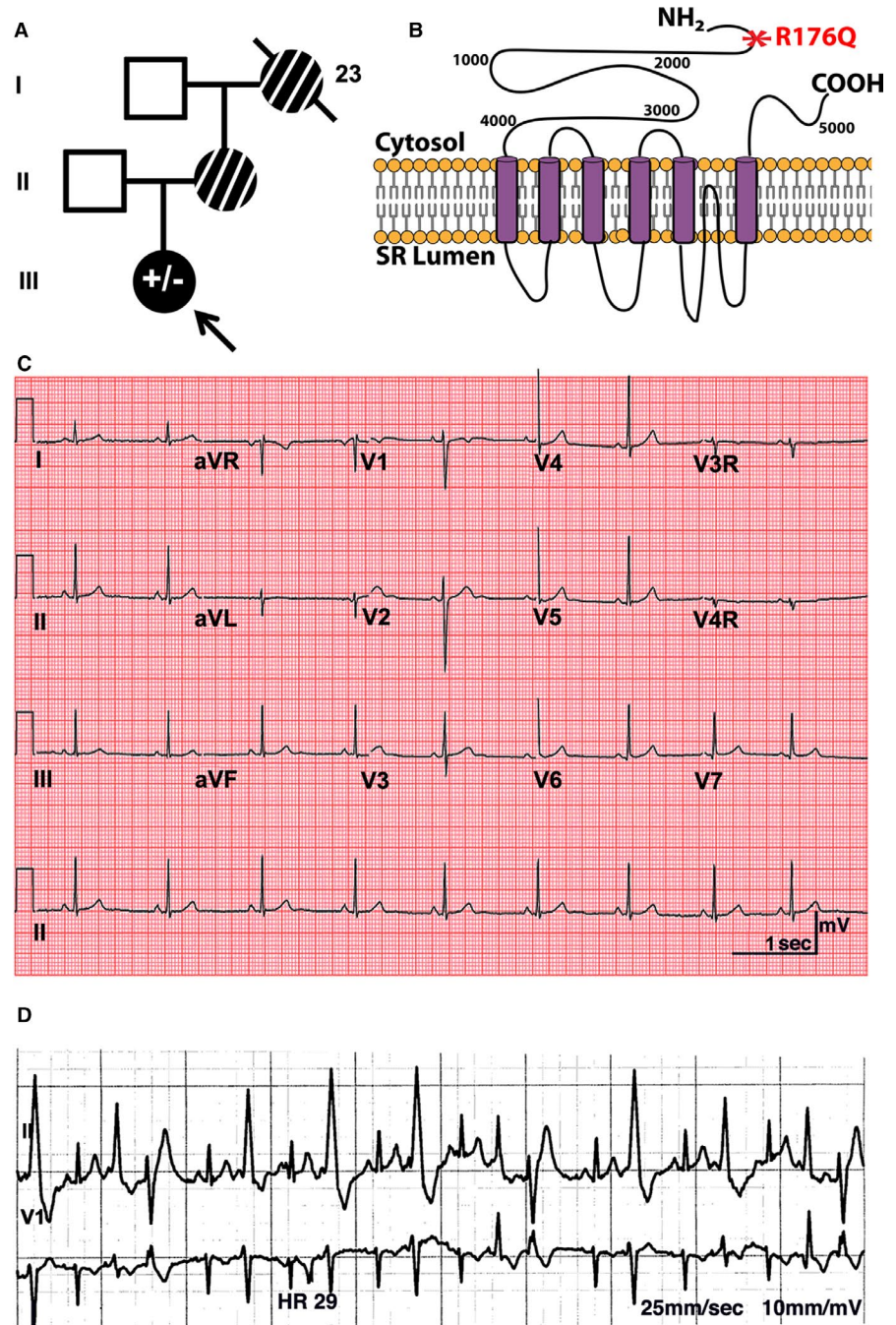
### 2.2 | Cardiac differentiation of iPSCs

iPSCs were differentiated into iPSC-CMs using the STEMdiff™ CM differentiation kit (Stemcell Technologies) according to the company protocol (Document #DX21496). See Supplemental Methods for details.

### 2.3 | Dissociation and plating of mature iPSC-CMs

Spontaneously beating CMs were dissociated using the STEMdiff™ Cardiomyocyte Dissociation Kit (Stemcell Technologies; Document #DX21497). See Supplemental Methods for details.

**FIGURE 1** Pedigree and clinical phenotype of catecholaminergic polymorphic ventricular tachycardia (CPVT) patient: A, 14-year-old proband and kindred. The CPVT proband is identified by a black arrow, and the R176Q variant in RYR2 is denoted by a filled black symbol ( $\pm$  represents heterozygosity for the R176Q variant). Unaffected family members are shown as open symbols. Family members with a history of sudden cardiac arrest who were not genetically tested are shown as striped symbols. Line through symbol represents deceased family member. B, Schematic of RyR2 protein highlighting R176Q mutation (red). C, Standard resting 12-lead ECG of the proband showing normal activity. D, Episode of polymorphic ventricular ectopy following epinephrine challenge in proband



## 2.4 | EL20 synthesis

The tetracaine derivative, 2-(diethylamino)ethyl 4-butylamino-2-methoxybenzoate, also known as EL20, was synthesized using a two-step synthesis route as previously described by Klipp et al.<sup>13</sup>

## 2.5 | Ca<sup>2+</sup> imaging of iPSC-CMs and drug treatment using EL20

For drug assay studies, iPSC-CMs were incubated with drug (concentration range 0.5 nmol/L–5  $\mu$ mol/L) for 30 minutes at 37°C. Ca<sup>2+</sup>

sparks were recorded in line-scan mode using a LSM880 confocal microscope (Carl Zeiss). CaSpF was assessed with ImageJ software using SparkMaster plugin. See Supplemental Methods for details.

## 2.6 | Statistical analysis

Results are expressed as mean  $\pm$  SEM. For clustered data in which continuous variables were observed, the generalized estimating equation was used via SPSS version 24 (IBM) or Prism 8 (GraphPad) using an unpaired Student's *t* test or ANOVA, after performing the D'Agostino-Pearson normality test for normal data distribution.

For multiple group comparison, two-way ANOVA followed by Tukey's post-test was used.  $P < .05$  was considered statistically significant.

### 3 | RESULTS

#### 3.1 | Clinical evaluation of CPVT proband

The patient was previously a seemingly healthy female with a family history of sudden cardiac death (Figure 1A,B). Her maternal grandmother died postpartum at the age of 23 years, after giving birth to the proband's mother. The proband's mother suffered an aborted cardiac arrest at the age of 19 and again at the age of 35 that consequently left her in a persistent vegetative state. The proband underwent cardiac evaluation at the age of 14 and was found to have a structurally normal heart with normal bi-ventricular function by echocardiogram (Figure S1). Her 12-lead resting ECGs revealed a normal heart rate (54 beats per minute), normal PR interval (144 ms), normal QT interval (410 ms) and a normal corrected QT interval (QTc of 389 ms) (Figure 1C). She had no prior history of syncope and denied any cardiac symptoms. A few months after initial evaluation, the patient suffered an aborted cardiac arrest after running home from school. She was found to be in ventricular fibrillation with return of spontaneous circulation after successful defibrillation. During hospital admission, she was noted to have bi-directional premature ventricular contractions during periods of stimulation. Due to suspicion of CPVT, she underwent an epinephrine challenge which revealed bi-directional VT and was subsequently diagnosed with CPVT (Figure 1D). Genetic testing confirmed a heterozygous pathogenic missense mutation in *RYR2* (c.527G>A, p.Arg176Gln and R176Q). The CPVT proband is currently being treated with a  $\beta$ -blocker and has an ICD. Her father (41-year-old) is an unaffected family member and is considered a healthy, mutation-negative control.

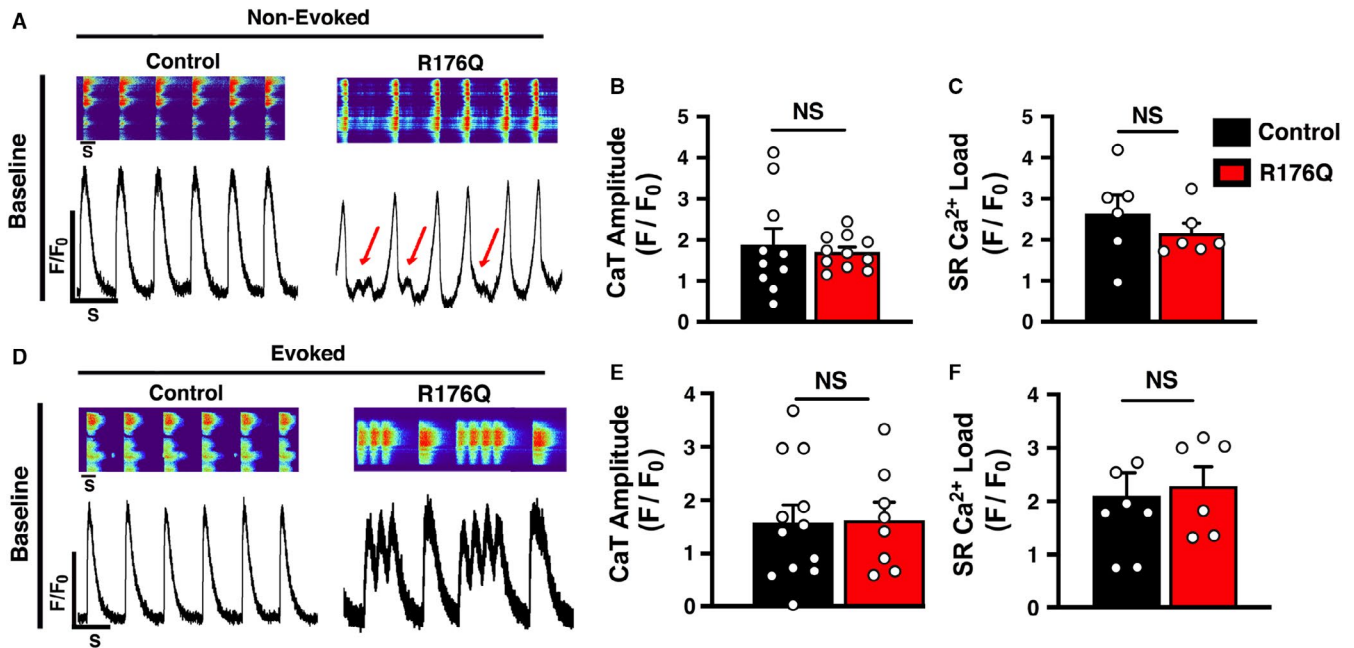
#### 3.2 | Development, characterization and cardiac differentiation of iPSCs

Blood from the CPVT proband and mutation-negative father was collected, and peripheral blood mononuclear cells (PBMCs) were extracted and subsequently reprogrammed into iPSCs using Sendai viruses (Figure S2A-D). Both cell lines were karyotyped and exhibited normal chromosomal architectures (Figure S2E). The cells were genetically sequenced and the mutant variant (G > A) was found to be present in the proband-derived iPSCs but not in those derived from the control individual (Figure S2F). The pluripotency of the cells was validated using fluorescence-activated cell sorting (FACS)

(Figure S3). CPVT proband and control-derived iPSCs were differentiated into CMs that contracted spontaneously as coordinated sheets observed under light microscopy (Figure S4A,B). iPSC-CMs dissociated into single cells from both lines maintained spontaneous contraction. qPCR demonstrated down-regulation of the pluripotency markers and SOX2 (Tables S1 and S2; Figure S4C) and up-regulation of the cardiac and  $\text{Ca}^{2+}$  handling markers (Table S2; Figure S4C). Immunofluorescence exhibited positive staining for similar cardiac and  $\text{Ca}^{2+}$  handling markers (Table S3; Figure S4D).

#### 3.3 | CPVT patient-derived iPSC-CMs exhibit spontaneous and evoked $\text{Ca}^{2+}$ transients

Previous studies revealed that beating clusters of iPSC-CMs contain a mixture of ventricular, atrial and sinus node-like cell populations based on their action potential (AP) phenotypes.<sup>19</sup> Here, we used confocal  $\text{Ca}^{2+}$  imaging to characterize intracellular  $\text{Ca}^{2+}$  handling in dissociated iPSC-CMs that exhibited a ventricular-type morphology. About 50% of iPSC-CMs exhibited non-evoked, spontaneous rhythmic beating without electrical stimulation (Figure 2A). The average spontaneous beating rate of non-evoked iPSC-CMs with the R176Q mutation was  $80.8 \pm 8.4/\text{min}$  vs control iPSC-CMs  $41.6 \pm 8.4/\text{min}$  ( $P = .002$ ) consistent with being arrhythmic (Figure S5). In addition, 60% (6 out of 10 cells) of non-evoked R176Q iPSC-CM exhibited irregular  $\text{Ca}^{2+}$  waveforms following completion of the  $\text{Ca}^{2+}$  transient, thus resembling events that could initiate delayed afterdepolarizations (DADs). The amplitudes of non-evoked  $\text{Ca}^{2+}$  transients were similar between the groups ( $F/F_0$  in R176Q:  $1.7 \pm 0.35$  vs control:  $1.9 \pm 0.33$ ;  $P = .64$ ) (Figure 2B). The SR  $\text{Ca}^{2+}$  load assessed by a caffeine dump protocol was found to be similar between both groups ( $F/F_0$  in R176Q:  $2.2 \pm 0.24$  vs control:  $2.6 \pm 0.88$  and  $P = .37$ ) (Figure 2C). Next, we performed electrical field stimulation to characterize iPSC-CMs that were not spontaneously active under baseline conditions. About 75% of the iPSC-CMs that did not spontaneously beat at baseline followed the 1-Hz pacing train (Figure 2D); the remainder of the cells did not exhibit SR  $\text{Ca}^{2+}$  release upon electrical stimulation. While similar number of iPSC-CMs with the R176Q variant responded to electrical stimulation, 63% of those iPSC-CMs exhibited aberrant SR  $\text{Ca}^{2+}$  release patterns characterized by  $\text{Ca}^{2+}$  oscillations during the  $\text{Ca}^{2+}$  transient decay phase, that resemble those seen in conjunction with early afterdepolarizations (EADs). Finally, the amplitude of the  $\text{Ca}^{2+}$  transients ( $F/F_0$  in R176Q:  $1.6 \pm 0.21$  vs control:  $1.6 \pm 0.44$ ;  $P = .94$ ) (Figure 2E) and total SR  $\text{Ca}^{2+}$  load ( $F/F_0$  in R176Q:  $2.3 \pm 0.36$  vs control:  $2.1 \pm 0.43$ ;  $P = .76$ ) (Figure 2F) was similar amongst the groups. Together, these results show that systolic SR  $\text{Ca}^{2+}$  handling was similar between R176Q and control iPSC-CMs, while aberrant diastolic SR  $\text{Ca}^{2+}$  release events were seen exclusively in iPSC-CM from the CPVT patient.



**FIGURE 2** Systolic  $\text{Ca}^{2+}$  transients in control and R176Q proband-derived induced pluripotent stem cell-derived cardiomyocytes (iPSC-CMs) under baseline conditions. A, Confocal line-scan images (top) and  $\text{Ca}^{2+}$  transients (bottom) in iPSC-CMs from the proband with the R176Q variant and healthy control under baseline conditions. Red arrows indicate spontaneous SR  $\text{Ca}^{2+}$  release events that developed during the diastolic phase in PSC-CMs from the proband. Bar graph summarizing non-evoked B,  $\text{Ca}^{2+}$  transient amplitude and C, 10 mmol/L caffeine-induced SR Load under baseline conditions of control (black) and R176Q (red) iPSC-CMs. D, Confocal line-scan images (upper panel) and transients (bottom panel) showing intracellular  $\text{Ca}^{2+}$  handling loaded with fluoro-4-AM of evoked (1-Hz field stimulation) control vs R176Q iPSC-CMs at baseline. DADs were further exacerbated in stimulated R176Q iPSC-CMs. Bar graph summarizing evoked E,  $\text{Ca}^{2+}$  transient amplitude and F, 10 mmol/L caffeine-induced SR Load under baseline conditions. Open circles represent individual cells. Data presented as mean  $\pm$  SEM (NS = not statistically significant)

### 3.4 | Isoproterenol generates EADs in R176Q iPSC-CMs spontaneous and evoked $\text{Ca}^{2+}$ transients

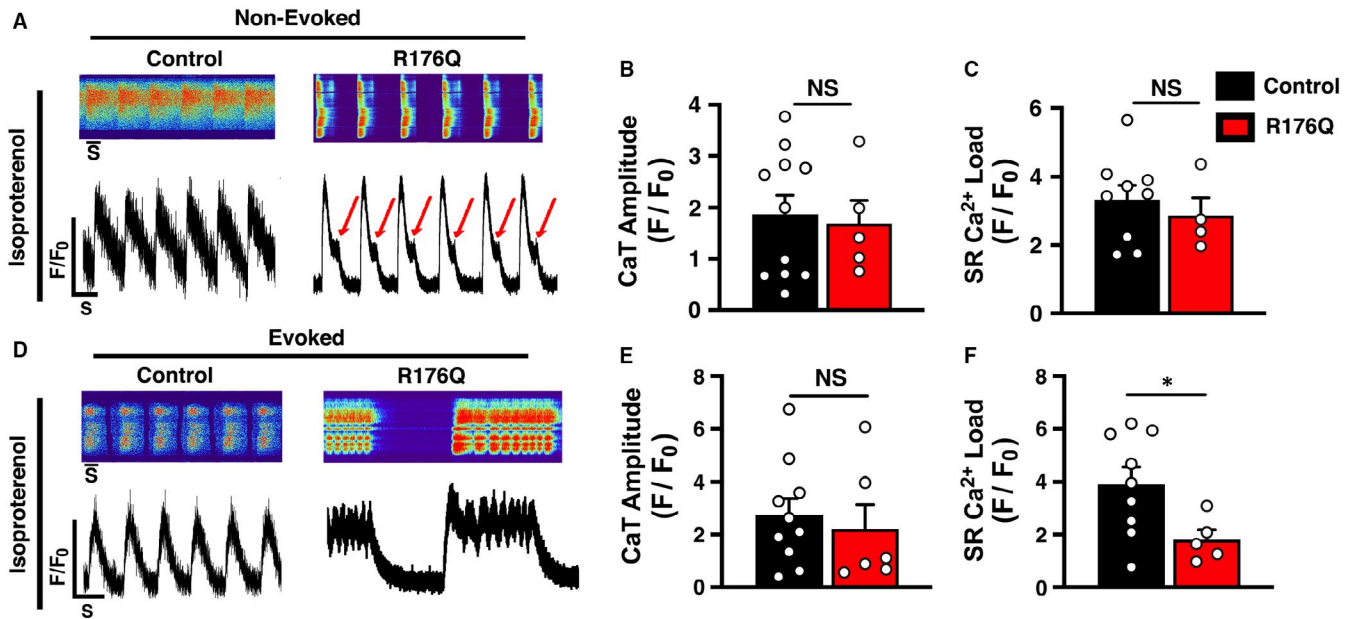
To simulate  $\beta$ -adrenergic stimulation conditions that provoke arrhythmias in CPVT patients, 100 nmol/L isoproterenol (ISO) was added to the iPSC-CMs. Addition of ISO led to a positive chronotropic response compared to baseline conditions, as typically seen in healthy iPSC-CMs.<sup>20</sup> The average spontaneous beating rate of non-evoked iPSC-CMs with the R176Q mutation was  $122.3 \pm 18.1$  /minutes vs control iPSC-CMs  $35.4 \pm 5.2$  ( $P = .002$ ). 53% of the iPSC-CMs with the R176Q variant exhibited abnormal SR  $\text{Ca}^{2+}$  release events during the final phase of SR  $\text{Ca}^{2+}$  reuptake, compared to 0% of the control cells ( $P < .05$ ) (Figure 3A). The amplitudes of non-evoked  $\text{Ca}^{2+}$  transients were similar between the groups ( $F/F_0$  in R176Q:  $1.7 \pm 0.45$  vs control:  $1.9 \pm 0.37$ ;  $P = .78$ ) (Figure 3B). The SR  $\text{Ca}^{2+}$  load was found to be similar between both groups ( $F/F_0$  in R176Q:  $2.7 \pm 0.52$  vs control:  $3.3 \pm 0.42$  and  $P = .53$ ) (Figure 3C).

About 75% of the iPSC-CMs that did not spontaneously beat did generate SR  $\text{Ca}^{2+}$  transients following the 1-Hz pacing train (Figure 3D). While similar number of iPSC-CMs with the R176Q variant responded to electrical stimulation, 71% (5 of 7) of those iPSC-CMs exhibited distinct oscillating SR  $\text{Ca}^{2+}$  release patterns that originated early during the  $\text{Ca}^{2+}$  transient recovery phase. These abnormalities were not observed in any of the control

iPSC-CMs after ISO stimulation. The amplitude of the  $\text{Ca}^{2+}$  transients ( $F/F_0$  in R176Q:  $2.2 \pm 1.5$  vs control:  $2.7 \pm 0.89$ ;  $P = .63$ ) was similar amongst the two groups (Figure 3E). However, the SR  $\text{Ca}^{2+}$  load was significantly lower in R176Q iPSC-CM ( $F/F_0$ :  $1.8 \pm 0.37$ ) compared with control iPSC-CMs ( $F/F_0$ :  $3.9 \pm 0.64$ ;  $P = .039$ ), suggesting that the oscillating SR  $\text{Ca}^{2+}$  release events interfere with SR  $\text{Ca}^{2+}$  refilling.

### 3.5 | Effect of EL20 $\text{Ca}^{2+}$ sparks in iPSC-CMs

$\text{Ca}^{2+}$  sparks were recorded using line-scan mode on a LSM880 confocal microscope to determine the diastolic activity of RyR2 in iPSC-CMs following a 1-Hz conditioning pacing train. Because spontaneous contractions in the non-evoked iPSC-CM population can potentially confound diastolic  $\text{Ca}^{2+}$  releases,  $\text{Ca}^{2+}$  imaging was done only under evoked pacing conditions to profile the drug responses of EL20 in vitro. In the presence of 100 nmol/L ISO, iPSC with the R176Q mutation exhibited a higher  $\text{Ca}^{2+}$  spark frequency (CaSpF) ( $3.6 \pm 0.45$  sparks/100  $\mu\text{m/s}$ ) compared with iPSC from the control ( $1.2 \pm 0.34$  sparks/100  $\mu\text{m/s}$ ;  $P < .001$ ) (Figure 4A,B). Next, a screening dose of 500 nmol/L of EL20 was applied to the cells to determine the effects of this RyR2 inhibitor on diastolic SR  $\text{Ca}^{2+}$  release events. In control iPSC-CMs, the CaSpF was not significantly affected by the



**FIGURE 3** Effects of isoproterenol on systolic  $\text{Ca}^{2+}$  transients in control and R176Q-proband-derived induced pluripotent stem cell-derived cardiomyocytes (iPSC-CMs) under baseline conditions. A, Confocal line-scan images (top) and  $\text{Ca}^{2+}$  transients (bottom) in iPSC-CMs from the proband with the R176Q variant and healthy control in the presence of 100-nmol/L isoproterenol (ISO). Red arrows indicate spontaneous SR  $\text{Ca}^{2+}$  release events that developed during the diastolic phase in PSC-CMs from the proband. Bar graph summarizing non-evoked B,  $\text{Ca}^{2+}$  transient amplitude and C, 10 mmol/L caffeine-induced SR Load under baseline conditions of control (black) and R176Q (red) iPSC-CMs. D, Confocal line-scan images (upper panel) and transients (bottom panel) showing intracellular  $\text{Ca}^{2+}$  handling loaded with fluoro-4-AM of evoked (1-Hz field stimulation) control vs R176Q iPSC-CMs in the presence of 100-nmol/L isoproterenol (ISO). SR  $\text{Ca}^{2+}$  oscillations were further exacerbated in stimulated R176Q iPSC-CMs. Bar graph summarizing evoked E,  $\text{Ca}^{2+}$  transient amplitude and F, 10 mmol/L caffeine-induced SR  $\text{Ca}^{2+}$  load in the presence of 100-nmol/L ISO. Open circles represent individual cells. Data presented as mean  $\pm$  SEM (\* $P < .05$ ; NS = not statistically significant)

addition of EL20 ( $1.3 \pm 0.44$  sparks/100  $\mu\text{m/s}$ ;  $P = .92$  vs vehicle). In contrast, in R176Q iPSC-CMs, EL20 significantly reduced the CaSpF by 78% (to  $0.8 \pm 0.45$  sparks/100  $\mu\text{m/s}$ ;  $P < .001$  vs vehicle).

### 3.6 | Dose-response of $\text{Ca}^{2+}$ spark inhibition by EL20

To get a better sense of what drug concentrations are needed to inhibit mutant RyR2 channels, we assessed the effects of different doses of EL20 on CaSpF in evoked iPSC-CMs derived from the CPVT proband. The dose-response curve, which is based on inhibition of the CaSpF, was determined at concentrations ranging from  $10^{-9}$  up to  $10^{-4}$  mol/L (Figure 4C). Results from the sigmoidal dose-response curve determined that the half maximal inhibitory concentration ( $\text{IC}_{50}$ ) of EL20 is  $8.2 \times 10^{-8}$  mol/L. Hence, EL20 was found to inhibit excessive SR  $\text{Ca}^{2+}$  release at low nanomolar concentrations that are clinically relevant.

### 3.7 | Absence of detrimental effects of EL20 on systolic SR $\text{Ca}^{2+}$ handling

Since EL20 inhibits aberrant SR  $\text{Ca}^{2+}$  release through mutant RyR2, it is possible that this drug has unwanted effects on systolic SR

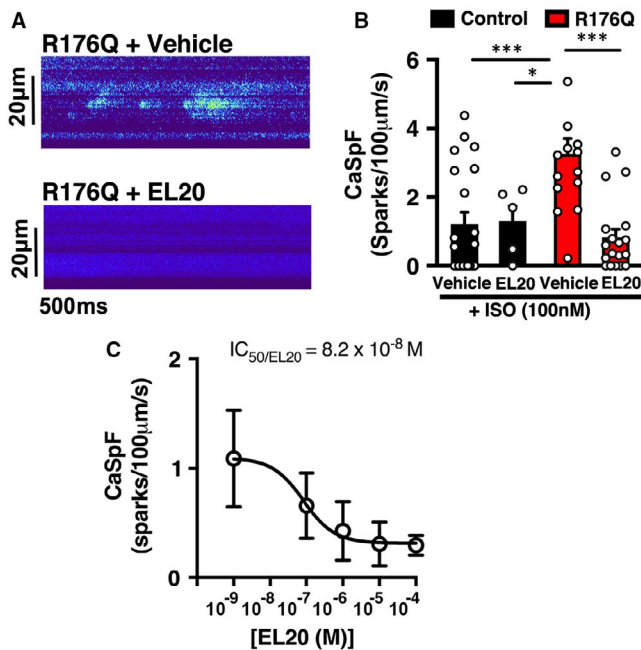
$\text{Ca}^{2+}$  transients consequently leading to unwanted side effects.<sup>21</sup> To address this concern, we measured the  $\text{Ca}^{2+}$  transient amplitude induced by field stimulation at 1-Hz in iPSC-CMs (Figure 5). The amplitude of the SR  $\text{Ca}^{2+}$  transient was not altered by EL20 in iPSC-CMs from the control ( $F/F_0$ :  $1.8 \pm 0.46$ ) compared to control + vehicle ( $F/F_0$ :  $1.9 \pm 0.27$ ;  $P = .91$ ). Importantly, EL20 also did not alter the  $\text{Ca}^{2+}$  transient amplitude in R176Q iPSC-CMs ( $F/F_0$ :  $1.7 \pm 0.20$ ) compared to R176Q + vehicle ( $F/F_0$ :  $1.9 \pm 0.46$ ;  $P = .79$ ). Interestingly, treatment with EL20 prevented to occurrence of pacing-evoked  $\text{Ca}^{2+}$  oscillations (Figure 3D), consistent with inhibition of aberrant RyR2 SR  $\text{Ca}^{2+}$  leak. Thus, EL20 does not negatively affect the  $\text{Ca}^{2+}$  transient amplitude at the cellular level, as previously seen in the CPVT mouse model.<sup>12</sup>

## 4 | DISCUSSION

Catecholaminergic polymorphic ventricular tachycardia remains a difficult to treat inherited cardiac disorder associated with arrhythmias provoked by adrenergic stress. As reviewed in great detail in this recent review article,<sup>9</sup> various classes of antiarrhythmic drugs with RyR2 inhibitory properties have been developed and some show great promise for the treatment of CPVT. Patient-derived induced pluripotent stem cell-derived

cardiomyocytes (hiPSC-CMs) offer a powerful cellular model to evaluate the potential effectiveness and safety of experimental drugs in a preclinical human cell model.<sup>22</sup> In the present study, we developed and characterized a novel iPSC-CM cell line containing an N-terminal variant R176Q in RyR2. Our studies revealed evidence for abnormal diastolic SR Ca<sup>2+</sup> release events

in spontaneously beating and paced single iPSC-CMs containing the R176Q variant in RyR2. Moreover, tetracaine derivative EL20 was able to suppress these aberrant SR Ca<sup>2+</sup> release events at low nanomolar doses, suggesting that EL20 and related compounds are promising agents for the treatment of CPVT patients.

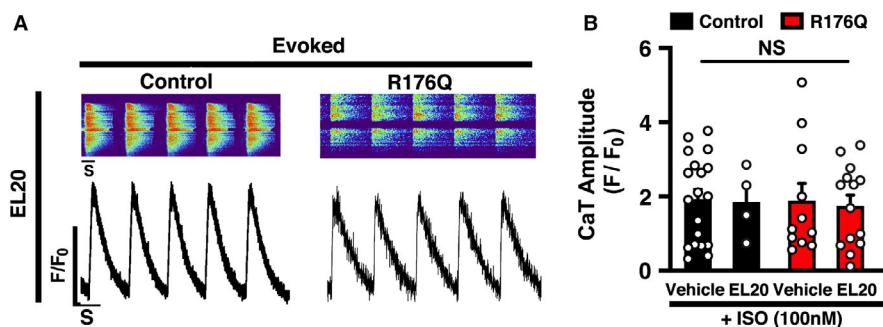


**FIGURE 4** EL20 suppresses abnormal SR Ca<sup>2+</sup> release events in induced pluripotent stem cell-derived cardiomyocytes (iPSC-CMs) derived from the catecholaminergic polymorphic ventricular tachycardia patient (CPVT) proband. A, Representative recordings of Ca<sup>2+</sup> sparks in iPSC-CMs from the CPVT proband in the absence and presence of EL20 (500-nmol/L). B, Summary data showing that EL20 reduced the Ca<sup>2+</sup> spark frequency (CaSpF) in stimulated iPSC-CM compared to vehicle treatment. C, Dose-dependence of Ca<sup>2+</sup> spark frequency inhibition and IC<sub>50</sub> determination of EL20 (n = 9–10 cells per group). Open circles represent individual cells. Data presented as mean ± SEM (\*P < .05, \*\*P < .01, and \*\*\*P < .001)

#### 4.1 | Preclinical CPVT models based on iPSC-CMs

Patient-specific induced pluripotent stem cell-derived cardiomyocytes have emerged as a powerful model of inherited arrhythmia disorders after the development of stem cell reprogramming by Yamanaka et al<sup>23</sup> iPSC-CMs containing various CPVT-associated RyR2 variants have been generated and studies using confocal imaging and patch-clamping approaches. Most studies to date revealed altered intracellular Ca<sup>2+</sup> handling, in particular during final stages of repolarization, and increased Ca<sup>2+</sup> spark frequencies, in iPSC-CMs containing RyR2 variants.<sup>24</sup> Consistent with clinical observations, the administration of β-adrenergic agonists exacerbated these Ca<sup>2+</sup> abnormalities in most studies. Jung et al<sup>25</sup> investigated intracellular Ca<sup>2+</sup> handling in great detail in CPVT iPSC-CM and found evidence for increased diastolic SR Ca<sup>2+</sup> leak as well as reduced SR Ca<sup>2+</sup> store contents after tonic stimulation. Our studies revealed similar findings including an increased SR Ca<sup>2+</sup> spark frequency and reduced SR Ca<sup>2+</sup> load after β-adrenergic stimulation. These data suggest that enhanced diastolic SR Ca<sup>2+</sup> leak in particular during β-adrenergic stimulation is the primary mechanism underlying arrhythmia formation, rather than SR Ca<sup>2+</sup> overload which has been proposed as one mechanism of CPVT by some authors.<sup>26,27</sup>

In this study, we developed iPSC-CMs derived from a 14-year-old girl with the same N-terminal RyR2 variant R176Q as the mouse model previously reported by us.<sup>13,18</sup> The R176Q variant caused a highly penetrant and severe phenotype in this affected family (Figure 1). The father, who is negative for the RyR2 variant, was the donor for the control iPSC-CM cell line. Characterization of intracellular Ca<sup>2+</sup> handling in the control iPSC-CMs revealed no



**FIGURE 5** Absence of detrimental effects on evoked systolic SR Ca<sup>2+</sup> transients by EL20. A, Confocal line-scan images (top) and transients (bottom) showing intracellular Ca<sup>2+</sup> transients recorded in induced pluripotent stem cell-derived cardiomyocytes (iPSC-CMs) loaded with fluoro-4-AM during 1-Hz field stimulation pacing in the presence 500-nmol/L EL20. B, Bar graph summarizing the Ca<sup>2+</sup> transient amplitude in iPSCs from both the catecholaminergic polymorphic ventricular tachycardia patient proband and control individual. Open circles represent individual cells. Data presented as mean ± SEM (NS = not statistically significant.)

abnormalities, confirming the specificity and validity of the CPVT iPSC-CM cell line. The iPSC-CM containing the R176Q variant exhibited several distinct abnormalities in intracellular  $\text{Ca}^{2+}$  handling. In spontaneously beating as well as pacing cells, spontaneous SR  $\text{Ca}^{2+}$  release events were seen during the late and early  $\text{Ca}^{2+}$  reuptake phase of the  $\text{Ca}^{2+}$  transient. The events during early repolarization look similar to oscillatory events associated with EADs in other studies in which action potentials were measured in iPSC-CMs.<sup>28,29</sup> These events more predominantly seen following  $\beta$ -adrenergic stimulation. In addition, aberrant SR  $\text{Ca}^{2+}$  release events were observed after or during the final repolarization phase, consistent with DADs. These findings are consistent with prior studies and recapitulate the CPVT phenotype within the iPSC-CM model.<sup>28</sup> Patients with RyR2 variants can be susceptible to both EAD- and DAD-mediated arrhythmia mechanisms because membrane voltage is strongly influenced by  $\text{Ca}^{2+}$ -sensitive ionic currents, and, conversely, cellular  $\text{Ca}^{2+}$  loading is strongly influenced by  $\text{Ca}^{2+}$  voltage-dependent currents that can promote complex AP dynamics in the heart.<sup>30</sup> The diastolic SR  $\text{Ca}^{2+}$  leak can activate the  $\text{Na}^+/\text{Ca}^{2+}$ -exchanger, leading to a net inward  $\text{Na}^+$  current that can depolarize the plasma membrane leading to an arrhythmogenic beat.

#### 4.2 | EL20 prevents arrhythmogenic $\text{Ca}^{2+}$ release events in CPVT iPSC-CMs

Several prior studies showed that iPSC-CMs derived from CPVT patients can be utilized to identify drug molecules that correct the cellular phenotypes associated with mutant RyR2.<sup>24</sup> In prior work, we synthesized a novel tetracaine derivative known as EL20 and tested its pharmacological properties in the RyR2-R176Q heterozygous mouse model of CPVT.<sup>13</sup> EL20 prevented ventricular tachycardia in R176Q/+ mice. Another tetracaine derivative known as EL9 also suppressed VT in the R176Q/+ mouse model without adverse effects on cardiac contractility.<sup>12</sup> In ventricular myocytes isolated from R176Q/+ mice, EL9 normalized the increased  $\text{Ca}^{2+}$  spark frequency with an  $\text{IC}_{50}$  of 13 nmol/L.<sup>12</sup> These findings in ventricular myocytes isolated from a CPVT mouse model were quite similar to those reported for EL20 in iPSC-CMs carrying the identical RyR2 variant R176Q. The present study represents the first to characterize the effects of a tetracaine derivative with RyR2 inhibiting activity (ie EL20) on intracellular  $\text{Ca}^{2+}$  handling properties in human cardiomyocytes. Our work reveals that EL20 can normalize intracellular  $\text{Ca}^{2+}$  handling at nanomolar concentrations and prevented cellular arrhythmogenesis in iPSC-CM from a CPVT patient (Figure S6). On the other hand, EL20 did not exhibit unwanted effects in control iPSC-CMs derived from the proband's father who is negative for the RyR2 variant. Moreover, EL20 did not affect systolic SR  $\text{Ca}^{2+}$  release as evidenced by unaltered  $\text{Ca}^{2+}$  transient amplitudes (Figure 5). Since there was no difference in SR  $\text{Ca}^{2+}$  load between control and R176Q cells under basal conditions (Figure 2C), we are quite confident that EL20 does not alter the SR

$\text{Ca}^{2+}$  load. Together, these findings indicate that EL20 directly inhibits diastolic SR  $\text{Ca}^{2+}$  release events through the R176Q mutant RyR2 channels.

Previous studies revealed that EL20 stabilizes hyperactive RyR2 channels.<sup>13</sup> The molecular mechanism underlying the therapeutic effects of EL20 is believed to involve stabilization of the mutant RyR2 channel from which calmodulin has been dissociated as a result of the CPVT variant.<sup>13</sup> On the other hand, EL20 did not alter the activity of wild-type RyR2 channel to which normal amounts of calmodulin are bound.<sup>13</sup> Future studies can be conducted to validate this model by overexpressing calmodulin or generating calmodulin variants that enhance its binding to RyR2 containing CPVT-associated variants. Regardless, the observation that EL20 and likely other tetracaine derivatives only modulate RyR2 channels containing disease-associated variants is promising and suggests that these drugs will lack significant side effects, in particular suppression of excitation-contraction coupling and reduced cardiac contractility.

## 5 | CONCLUSIONS

We found that iPSC-CMs derived from a CPVT patient carrying RyR2 variant R176Q display irregular spontaneous  $\text{Ca}^{2+}$  release events that are well-established triggers of arrhythmias. Our data show that EL20 eliminated cellular arrhythmias at nanomolar concentrations in the absence of obvious side effects on intracellular  $\text{Ca}^{2+}$  handling parameters examined in the iPSC-CMs. Therefore, EL20 is a promising lead compound for further drug development efforts that could potentially provide novel treatment options for the orphan disease CPVT. RyR2 inhibitors such as EL20 directly target the disease-causing molecular defect in patients with CPVT (ie leaky RyR2 channels) and could be more effective compared to  $\beta$  blockers that work upstream in the  $\beta$ -adrenergic receptor signaling pathway that leads to RyR2 phosphorylation and exacerbation of SR  $\text{Ca}^{2+}$  leak during stress or exercise.<sup>31</sup> In a patient with a very high arrhythmic burden, however, it might be beneficial to treat with both EL20 and  $\beta$  blockers to prevent SR  $\text{Ca}^{2+}$  leak at multiple levels in the signalling pathway. In conclusion, our patient-derived iPSC-CM model offers a promising platform for further research into the pathophysiological mechanisms of CPVT, as well as a safe tool for screening and optimizing drug therapy using novel RyR2 inhibitors.

### ACKNOWLEDGEMENTS

The compound EL20 was provided by Elex Biotech, Inc (Portland, OR).

### CONFLICT OF INTEREST

RMS and XHTW are founding partners of Elex Biotech, a start-up company that developed drug molecules to target ryanodine receptors for treatment of cardiac arrhythmias. Other authors have no conflicts related to this study.



## AUTHOR CONTRIBUTIONS

**Tarah Word:** Data curation (lead); Formal analysis (lead); Methodology (equal); Writing—original draft (lead). **Ann Quick:** Investigation (supporting); Writing—review and editing (supporting). **Christina Miyake:** Formal analysis (supporting); Investigation (supporting). **Mayra Shak:** Methodology (supporting). **Xialo Pan:** Methodology (supporting); Resources (supporting). **Jean Kim:** Methodology (supporting); Supervision (supporting). **Hugh Allen:** Supervision (supporting). **Martha Sibrian-Vazquez:** Resources (supporting). **Robert Strongin:** Supervision (supporting); Validation (supporting); Writing—review and editing (supporting). **Andrew Landstrom:** Resources (supporting); Supervision (supporting); Writing—review and editing (supporting). **Xander H. Wehrens:** Conceptualization (lead); Project administration (lead); Resources (lead); Supervision (lead); Writing—review & editing (lead).

## ORCID

Andrew P. Landstrom  <https://orcid.org/0000-0002-1878-9631>

Xander H. T. Wehrens  <https://orcid.org/0000-0001-5044-672X>

## REFERENCES

- Wehrens XH, Lehnart SE, Huang F, et al. FKBP12.6 deficiency and defective calcium release channel (ryanodine receptor) function linked to exercise-induced sudden cardiac death. *Cell*. 2003;113:829-840.
- Laitinen PJ, Brown KM, Piippo K, et al. Mutations of the cardiac ryanodine receptor (RyR2) gene in familial polymorphic ventricular tachycardia. *Circulation*. 2001;103:485-490.
- Lehnart SE, Wehrens XH, Laitinen PJ, et al. Sudden death in familial polymorphic ventricular tachycardia associated with calcium release channel (ryanodine receptor) leak. *Circulation*. 2004;109:3208-3214.
- Lehnart SE, Wehrens XH, Kushnir A, Marks AR. Cardiac ryanodine receptor function and regulation in heart disease. *Ann NY Acad Sci*. 2004;1015:144-159.
- Imberti JF, Underwood K, Mazzanti A, Priori SG. Clinical challenges in catecholaminergic polymorphic ventricular tachycardia. *Heart Lung Circ*. 2016;25:777-783.
- Watanabe H, Chopra N, Laver D, et al. Flecainide prevents catecholaminergic polymorphic ventricular tachycardia in mice and humans. *Nat Med*. 2009;15:380-383.
- van der Werf C, Kannankeril PJ, Sacher F, et al. Flecainide therapy reduces exercise-induced ventricular arrhythmias in patients with catecholaminergic polymorphic ventricular tachycardia. *J Am Coll Cardiol*. 2011;57:2244-2254.
- Roston TM, Jones K, Hawkins NM, et al. Implantable cardioverter-defibrillator use in catecholaminergic polymorphic ventricular tachycardia: a systematic review. *Heart Rhythm*. 2018;15:1791-1799.
- Connell P, Word TA, Wehrens XHT. Targeting pathological leak of ryanodine receptors: preclinical progress and the potential impact on treatments for cardiac arrhythmias and heart failure. *Expert Opin Ther Targets*. 2020;24:25-36.
- Wehrens XH, Lehnart SE, Reiken SR, et al. Protection from cardiac arrhythmia through ryanodine receptor-stabilizing protein calstabin2. *Science*. 2004;304:292-296.
- Fauconnier J, Thireau J, Reiken S, et al. Leaky RyR2 trigger ventricular arrhythmias in Duchenne muscular dystrophy. *Proc Natl Acad Sci USA*. 2010;107:1559-1564.
- Li N, Wang Q, Sibrian-Vazquez M, et al. Treatment of catecholaminergic polymorphic ventricular tachycardia in mice using novel RyR2-modifying drugs. *Int J Cardiol*. 2017;227:668-673.
- Klipp RC, Li N, Wang Q, et al. EL20, a potent antiarrhythmic compound, selectively inhibits calmodulin-deficient ryanodine receptor type 2. *Heart Rhythm*. 2018;15:578-586.
- Galimberti ES, Knollmann BC. Efficacy and potency of class I antiarrhythmic drugs for suppression of Ca<sup>2+</sup> waves in permeabilized myocytes lacking calsequestrin. *J Mol Cell Cardiol*. 2011;51:760-768.
- Kobayashi S, Yano M, Uchinoumi H, et al. Dantrolene, a therapeutic agent for malignant hyperthermia, inhibits catecholaminergic polymorphic ventricular tachycardia in a RyR2(R2474S/+) knock-in mouse model. *Circ J*. 2010;74:2579-2584.
- Smith CD, Wang A, Vembaiyan K, et al. Novel carvedilol analogues that suppress store-overload-induced Ca<sup>2+</sup> release. *J Med Chem*. 2013;56:8626-8655.
- Batiste SM, Blackwell DJ, Kim K, et al. Unnatural verticilide enantiomer inhibits type 2 ryanodine receptor-mediated calcium leak and is antiarrhythmic. *Proc Natl Acad Sci USA*. 2019;116:4810-4815.
- Kannankeril PJ, Mitchell BM, Goonasekera SA, et al. Mice with the R176Q cardiac ryanodine receptor mutation exhibit catecholamine-induced ventricular tachycardia and cardiomyopathy. *Proc Natl Acad Sci USA*. 2006;103:12179-12184.
- Zhang XH, Morad M. Calcium signaling in human stem cell-derived cardiomyocytes: evidence from normal subjects and CPVT afflicted patients. *Cell Calcium*. 2016;59:98-107.
- Schick R, Mekies LN, Shemer Y, et al. Functional abnormalities in induced pluripotent stem cell-derived cardiomyocytes generated from titin-mutated patients with dilated cardiomyopathy. *PLoS One*. 2018;13:e0205719.
- Ahola A, Polonen RP, Aalto-Setälä K, Hyttinen J. Simultaneous measurement of contraction and calcium transients in stem cell derived cardiomyocytes. *Ann Biomed Eng*. 2018;46:148-158.
- Juhola M, Penttinen K, Joutsijoki H, Aalto-Setälä K. Analysis of drug effects on iPSC cardiomyocytes with machine learning. *Ann Biomed Eng*. 2020;49(1):129-138.
- Takahashi K, Tanabe K, Ohnuki M, et al. Induction of pluripotent stem cells from adult human fibroblasts by defined factors. *Cell*. 2007;131:861-872.
- Bezzlerides VJ, Zhang D, Pu WT. Modeling inherited arrhythmia disorders using induced pluripotent stem cell-derived cardiomyocytes. *Circ J*. 2016;81:12-21.
- Jung CB, Moretti A, Mederos y Schnitzler M, et al. Dantrolene rescues arrhythmogenic RYR2 defect in a patient-specific stem cell model of catecholaminergic polymorphic ventricular tachycardia. *EMBO Mol Med*. 2012;4:180-191.
- MacLennan DH, Chen SR. Store overload-induced Ca<sup>2+</sup> release as a triggering mechanism for CPVT and MH episodes caused by mutations in RYR and CASQ genes. *J Physiol*. 2009;587:3113-3115.
- Dobrev D, Wehrens XH. Role of RyR2 phosphorylation in heart failure and arrhythmias: controversies around ryanodine receptor phosphorylation in cardiac disease. *Circ Res*. 2014;114:1311-1319.
- Kujala K, Paavola J, Lahti A, et al. Cell model of catecholaminergic polymorphic ventricular tachycardia reveals early and delayed afterdepolarizations. *PLoS One*. 2012;7:e44660.
- Zhao YT, Valdivia CR, Gurrola GB, et al. Arrhythmogenesis in a catecholaminergic polymorphic ventricular tachycardia mutation that depresses ryanodine receptor function. *Proc Natl Acad Sci USA*. 2015;112:E1669-E1677.
- Song Z, Ko CY, Nivala M, Weiss JN, Qu Z. Calcium-voltage coupling in the genesis of early and delayed afterdepolarizations in cardiac myocytes. *Biophys J*. 2015;108:1908-1921.

31. Chelu MG, Sarma S, Sood S, et al. Calmodulin kinase II-mediated sarcoplasmic reticulum Ca<sup>2+</sup> leak promotes atrial fibrillation in mice. *J Clin Invest*. 2009;119:1940-1951.

#### SUPPORTING INFORMATION

Additional supporting information may be found online in the Supporting Information section.

**How to cite this article:** Word TA, Quick AP, Miyake C, et al. Efficacy of RyR2 inhibitor EL20 in induced pluripotent stem cell-derived cardiomyocytes from a patient with catecholaminergic polymorphic ventricular tachycardia. *J Cell Mol Med*. 2021;25:6115-6124. <https://doi.org/10.1111/jcmm.16521>