

Research article

Open Access

## Pediatric reference intervals for thyroid hormone levels from birth to adulthood: a retrospective study

Klaus Kapelari\*<sup>1</sup>, Christine Kirchlechner<sup>1</sup>, Wolfgang Högler<sup>1</sup>, Katharina Schweitzer<sup>1</sup>, Irene Virgolini<sup>2</sup> and Roy Moncayo<sup>2</sup>

Address: <sup>1</sup>Department of Pediatric and Adolescent Medicine, Medical University of Innsbruck, Austria and <sup>2</sup>Department of Nuclear Medicine, Medical University of Innsbruck, Austria

E-mail: Klaus Kapelari\* - klaus.kapelari@i-med.ac.at; Christine Kirchlechner - KirchlechnerChristine@gmx.net;

Wolfgang Högler - wolfgang.hoegler@i-med.ac.at; Katharina Schweitzer - katharina.schweitzer@wienkav.at;

Irene Virgolini - irene.virgolini@i-med.ac.at; Roy Moncayo - Roy.Moncayo@i-med.ac.at;

\*Corresponding author

Published: 27 November 2008

Received: 2 August 2007

BMC Endocrine Disorders 2008, 8:15 doi: 10.1186/1472-6823-8-15

Accepted: 27 November 2008

This article is available from: <http://www.biomedcentral.com/1472-6823/8/15>

© 2008 Kapelari et al; licensee BioMed Central Ltd.

This is an Open Access article distributed under the terms of the Creative Commons Attribution License (<http://creativecommons.org/licenses/by/2.0>), which permits unrestricted use, distribution, and reproduction in any medium, provided the original work is properly cited.

### Abstract

**Background:** Age- and sex-specific reference intervals are an important prerequisite for interpreting thyroid hormone measurements in children. However, only few studies have reported age- and sex-specific pediatric reference values for TSH<sub>basal</sub> (TSH), free T3 (fT3), and free T4 (fT4) so far. Reference intervals are known to be method- and population-dependent. The aim of our study was to establish reference intervals for serum TSH, fT3, and fT4 from birth to 18 years and to assess sex differences.

**Methods:** 2,194 thyroid hormone tests obtained from a hospital-based pediatric population were included into our retrospective analysis. Individuals with diagnoses or medications likely to affect thyroid function were primarily excluded, as well as the diagnostic groups, if different from the purely healthy subgroup (n = 414). Age groups were ranging from 1 day to 1 month, 1 – 12 months, and 1 – 5, 6 – 10, 11 – 14, and 15 – 18 years, respectively. Levels of fT3, fT4 and TSH were measured on Advia<sup>®</sup> Centaur<sup>™</sup> automated immunoassay system.

**Results:** The final sample size for reference data creation was 1,209 for TSH, 1,395 for fT3, and 1,229 for fT4. Median and 2.5/10/25/75/90/97.5 percentiles were calculated for each age group. Males had greater mean fT3 concentrations than females (p < 0.001). No sex-differences were found for TSH and fT4 between age-matched serum samples. Median concentrations of fT3, fT4 and TSH were greatest during the first month of life, followed by a continuous decline with age.

**Conclusion:** Our results corroborate those of previous studies showing that thyroid hormone levels change markedly during childhood, and that adult reference intervals are not universally applicable to children. Moreover, differences of our reference intervals compared to previous studies were observed, likely caused by different antibody characteristics of various analytical methods, different populations or undefined geographic covariates, e.g. iodine and selenium status.

### Background

Hypothyroidism in children is associated with impaired physical and/or cognitive development. Therefore, neonatal screening for thyrotropin (TSH) values has been

established in the majority of developed countries to timely diagnose and treat congenital hypothyroidism, in order to prevent severe mental retardation. During childhood and adolescence, basal TSH levels are

presumed to be the most valuable parameter for diagnosing hypothyroidism and hyperthyroidism, and for the monitoring of thyroid replacement therapy. Nevertheless, measurement of free T4 (fT4) is indispensable to confirm these diagnoses, since it directly reflects hormone production by the thyroid gland [1]. Measurement of free T3 (fT3) only indirectly reflects thyroid hormone production but may provide additional information, since most of fT3 is produced by intracellular conversion by the deiodinases.

Despite their importance for interpreting individual results in clinical practice, pediatric reference values for thyroid function are scarce and published normative data often comprise only small numbers of patients [2-7]. Moreover, reference values vary considerably as they are population- and assay- specific. Significant variations of thyroid hormone levels during growth have been observed although, in contrast to a common misconception, pubertal development does not affect the concentration of thyroid hormones in children [3]. Data are inconsistent concerning sex differences. Biological variables such as nutrition and lifestyle may also influence thyroid function.

The aims of our study were 1) to establish age-specific reference intervals for serum concentrations of TSH, fT3, and fT4 in healthy children, 2) to assess sex differences in thyroid function, and 3) to compare our results to previously published reference data.

## Methods

### Subjects

Between July 2002 and October 2003 routine results of serum TSH, fT3, and fT4 were collected from existing laboratory data of 2,194 serum samples from a hospital based population of children aged 1 day – 18 years. The in- and out clinic patients had been admitted to the pediatric department of the Medical University Innsbruck for a variety of reasons. Subjects were sub-grouped according to age, ranging from 1 day to 1 month, 1 – 12 months, and 1 – 5, 6 – 10, 11 – 14, and 15 – 18 years, respectively. Classification of age groups was primarily based on those of previously published studies to facilitate reliable comparison of the results, and also specifically according to the age-related course of the obtained values. Two or more samples were taken from 410 patients, 1,085 patients had only one serum sample taken. All procedures were done in accordance with the Declaration of Helsinki.

Data were collected routinely within the setting of clinical practice according to standard procedures. The parents of the children gave their informed consent. No further measures were taken beyond clinical practice.

Classification of the patients in diagnostic categories was done using the International Classification of Diseases (ICD-10) codes. Children with conditions or concomitant medications likely to affect thyroid function were excluded from the reference group [8]. Also patients with eating disorders, with pituitary disease or chromosomal anomalies were not included in the analysis. Patients presenting a deviation in height or weight were identified at the clinical examination and classified as normal variants of growth (ICD E34.3 and E34.4) including familial or constitutional factors. All diagnostic groups have been included in a separate Excel file (additional material). Each diagnostic group was statistically evaluated in comparison to Z00.0 (n = 414; general examination and investigation of persons without complaint and reported diagnosis) using the one way ANOVA post-hoc analyses (data not shown). Serum samples from patients having the following ICD-10 diagnostic codes indicating thyroid dysfunction were excluded a-priori (n = 665): Congenital hypothyroidism with and without diffuse goiter (E03.0, E03.1), other non toxic goiter (E04.0 – E04.9), dys hormonogenetic goiter (E07.1), thyrotoxicosis (E05.0 – E05.9), autoimmune thyroiditis and unspecified thyroiditis (E06.3, E06.9), any neoplasm of the thyroid gland (C73 and D44.0), post procedural hypothyroidism (E89.0), and other specified or unspecified hypothyroidism (E03.8, E03.9).

### Methods

Analyses of TSH, fT3, and fT4 from undiluted serum samples of children and adolescents were performed on an automated immunoassay system (Advia® Centaur™, Bayer Health Care Diagnostika, Vienna, Austria) using a direct chemiluminescence detection system according to the manufacturer's instructions [9, 10]. TSH was analyzed in a two-site solid-phase format, whereas analysis of fT3 and fT4 was performed in a competitive assay. The intraassay coefficients of variation for TSH, fT3, and for fT4 were < 8.7%, < 3.5%, and < 8.1% respectively. The reference values on adult patients using this immunoassay system have recently been published in BMC Endocrine Disorders and Thyroid [11, 12].

### Statistical analysis

In addition to the selection criteria for the total reference group detailed above, serum values of TSH, fT3, and fT4 in each diagnostic group were also compared to the sub-group of primarily healthy children and adolescents (n = 414) using ANOVA and post-hoc Tukey's test. Groups that were not statistically different were pooled with the healthy reference group. Values of thyroid hormones were tested for their normal distribution. Because of the strong right-tailed skewed distribution of

TSH values, natural log transformation was required [13, 14]. Comparison between age-groups was performed using the unifactorial ANOVA test and post-hoc Tukey's test. Further post-hoc comparisons of mean values between age groups and sexes were assessed using the Student's t-test. Correlation analysis was performed using the Pearson method.

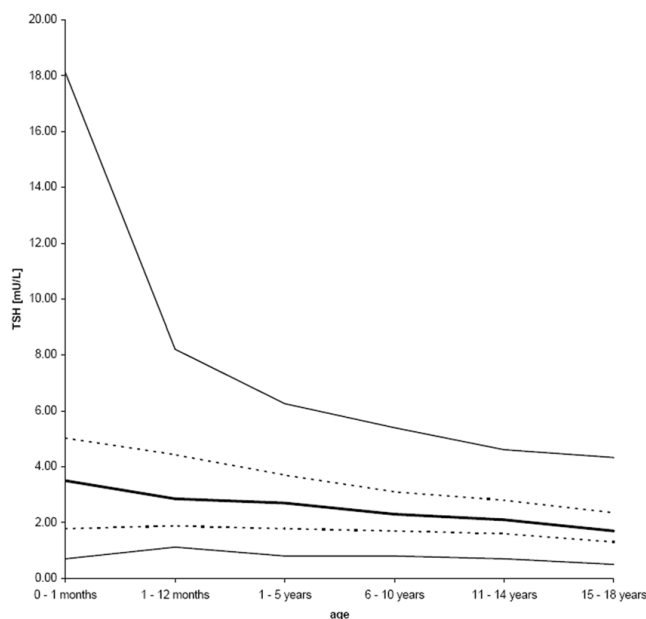
Two-tailed values of  $p < 0.05$  were considered statistically significant. Medians and percentiles (2.5<sup>th</sup> to 97.5<sup>th</sup>) for each variable were determined and taken as the reference interval. Statistical Package for Social Sciences (SPSS Inc., Chicago, IL, USA, version 12.0) was used for statistical analysis and creation of percentiles.

## Results

### TSH

The final sample size for the evaluation of TSH was 1,209. No difference was found between serum TSH concentrations of male ( $n = 636$ ; 52.6%) and female ( $n = 573$ ; 47.4%) children and adolescents ( $p = 0.689$ ) of all age groups. Therefore, both sexes were combined for the calculation of percentiles. Log transformation was done before analysis because of the significant right-tailed skewed distribution of the TSH values.

The 97.5<sup>th</sup> percentile was significantly higher in the age group of 0 – 1 month compared to all other age groups. TSH values decreased continuously with age, particularly during the first year of life. The 2.5<sup>th</sup> percentile was lower in the first month compared to the first year of life and subsequently also decreased with age (figure 1 and table 1). Variance for TSH was greatest in the first month of life and became narrower with increasing age (0–1 month: var = 15.04; 1–12 months: var = 3.55; 1–5 years: var = 2.96; 6–10 years: var = 1.46; 11–14 years: var = 1.08; 15–18 years: var = 0.98). A longitudinal sub-group of 32 patients with repeated evaluation of thyroid function showed initially elevated TSH, but normal fT3 and fT4 levels, which decreased and normalized spontaneously within 3 to 6 months without treatment. The age of these patients corresponds to that of the whole group (1 to 18 years of age). The cause for the initial elevation of



**Figure 1**  
Reference intervals for TSH of age groups listed in table 2. The central 95% range (2.5<sup>th</sup>, 25<sup>th</sup>, 50<sup>th</sup>, 75<sup>th</sup>, and 97.5<sup>th</sup> percentiles) is shown. Due to resolution reasons lines start at zero, although no samples were taken within the first hours after birth.

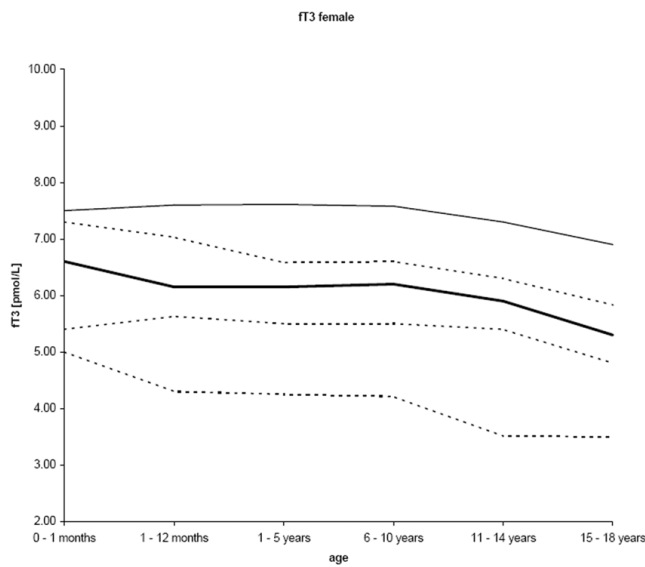
TSH was not found. The follow-up evaluations discarded the presence of subclinical hypothyroidism so that their TSH values were included. The initially elevated TSH levels were detected as outliers.

### fT3

The final number of samples for fT3 was 1,395. Results for fT3 were normally distributed. As expected, the median concentrations of fT3 were greatest in the age group up to one month, thereafter showing a continuous decline with age ( $p < 0.001$ ;  $r = -0.266$  for females and  $r = -0.196$  for males), except for males 1 – 5 years and females 6 – 10 years. Males had greater ( $p < 0.001$ ) mean fT3 concentrations ( $n = 824$ ; 59.1%) than females ( $n = 571$ ; 40.9%). The decrease of the 2.5<sup>th</sup> percentile was more distinct compared to the 97.5<sup>th</sup> percentile (figures 2 and 3, table 2).

**Table 1: Percentiles for TSH (mU/L) of children and adolescents in different age groups**

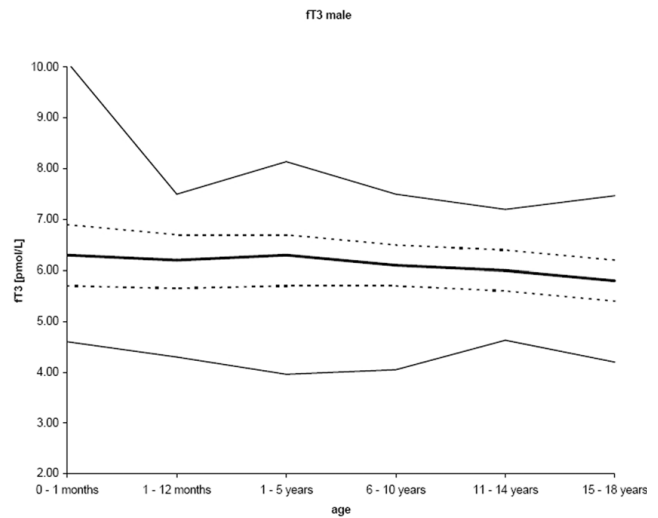
Age	n	percentiles						
		2.5	10	25	50	75	90	97.5
0 – 1 months	22	0.70	1.00	1.78	3.50	5.03	9.34	18.10
1–12 months	42	1.12	1.53	1.88	2.85	4.43	6.81	8.21
1–5 years	218	0.80	1.30	1.78	2.70	3.70	4.80	6.26
6–10 years	315	0.80	1.20	1.70	2.30	3.10	3.80	5.40
11–14 years	355	0.70	1.10	1.60	2.10	2.80	3.60	4.61
15–18 years	233	0.50	0.94	1.30	1.70	2.35	3.30	4.33



**Figure 2**  
The central 95% range for ft3 in females (2.5<sup>th</sup>, 25<sup>th</sup>, 50<sup>th</sup>, 75<sup>th</sup>, and 97.5<sup>th</sup> percentiles) is shown.

**ft4**

The final sample size was 1,229 for ft4 (638 males = 51.9%; 591 females = 48.1%). No sex-difference of ft4 values were found in any age group (p = 0.268) and results were normally distributed. Values for ft4 showed a significant negative correlation with age (p < 0.001; r = -0.122). Variance for ft4 was greatest in the first month of life and then became narrower with age (0-1 month: var = 45.91; 1-12 months: var = 8.60; 1-5 years: var = 7.68; 6-10 years: var = 6.13; 11-14 years: var = 8.20; 15-18 years: var = 8.08) (figure 4). The 97.5<sup>th</sup> percentile showed a peak value of 30.5 pmol/L during the first month of the life and subsequently quite steady concentrations between 20 and 22.5 pmol/L. The 50<sup>th</sup> percentile of ft4 was also greatest in the first month of



**Figure 3**  
The central 95% range for ft3 in males (2.5<sup>th</sup>, 25<sup>th</sup>, 50<sup>th</sup>, 75<sup>th</sup>, and 97.5<sup>th</sup> percentiles) is shown.

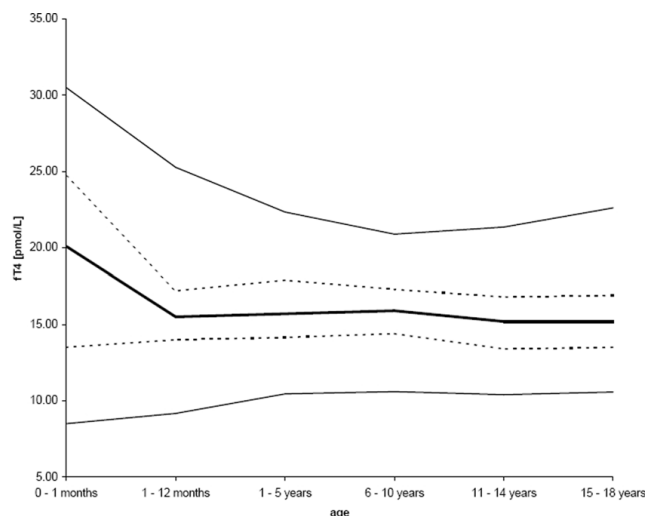
life with a rapid decrease during the first year of life and subsequently remained constant until the age of 18 years (table 3).

**Discussion**

This study provides new pediatric reference intervals for TSH, ft3, and ft4 for healthy Austrian children and adolescents using the Advia® Centaur™ assay. Adult reference values for thyroid function are well established, although the upper limit of normal TSH values is also currently under discussion [13, 15-19]. Recently adult reference values for thyroid function parameters using the Advia® Centaur™ assay have been defined by our study group [11, 12]. In children and adolescents, reliable age- and sex-specific reference intervals are an indispensable prerequisite to interpret individual

**Table 2: Percentiles for ft3 (pmol/L) of children and adolescents in different age groups.**

Age	Sex	n	percentiles						
			2.5	10	25	50	75	90	97.5
0 – 1 months	f	5	5.00	5.00	5.40	6.60	7.30	7.50	7.50
	m	9	4.60	4.60	5.70	6.30	6.90	10.10	10.10
1-12 months	f	14	4.30	4.50	5.63	6.15	7.03	7.50	7.60
	m	13	4.30	4.74	5.65	6.20	6.70	7.38	7.50
1-5 years	f	108	4.25	4.80	5.50	6.15	6.58	7.11	7.61
	m	111	3.96	5.32	5.70	6.30	6.70	7.48	8.14
6-10 years	f	163	4.21	5.10	5.50	6.20	6.60	7.00	7.58
	m	219	4.05	5.20	5.70	6.10	6.50	7.10	7.50
11-14 years	f	180	3.51	4.90	5.40	5.90	6.30	6.80	7.30
	m	252	4.63	5.20	5.60	6.00	6.40	6.80	7.20
15-18 years	f	98	3.50	4.48	4.80	5.30	5.83	6.50	6.90
	m	211	4.20	5.00	5.40	5.80	6.20	6.60	7.47



**Figure 4**  
**Age-related reference values for fT4 (both sexes).**  
 The central 95% range (2.5<sup>th</sup>, 25<sup>th</sup>, 50<sup>th</sup>, 75<sup>th</sup>, and 97.5<sup>th</sup> percentiles) is shown. Due to resolution reasons lines start at zero, although no samples were taken within the first hours after birth.

thyroid function correctly. However, thyroid hormone values are population and method-dependent [20, 21]. Thus, a series of pediatric thyroid reference data have been published using different analytical methods and antibody characteristics with variable subject numbers [2-7]. To our knowledge, only one, smaller study in children and adolescents used the Advia<sup>®</sup> Centaur<sup>™</sup> assay, which is widely used in clinical laboratories [4].

We are well aware of methodological advances in the determination of free thyroid hormones based on the technique of isotope dilution tandem mass spectrometry [22-29] which correlates better with equilibrium dialysis procedures [30]. In spite of this advantage we still advocate the used of an immunoassay procedure as we have done in this study. In previous publications we have evaluated extensively the clinical applicability of such a system for the determination of reference values for adults [11]. On

practical terms, the immunoassay procedure with the Advia Centaur<sup>®</sup> [5] will deliver results for fT3, fT4, TSH, thyroglobulin antibodies, and thyroid peroxidase antibodies within 20 minutes that meets requirements for clinical use [9, 31]. These practical conveniences outweighs the need for a high capital expenditure [32].

One limitation of our study is that it comprises a hospital-based population. Ideally, reference intervals should be determined using blood samples obtained from a large cohort of healthy subjects. However, due to ethical and practical considerations in children, reference interval determination often relies on large hospital databases, which, by applying appropriate selection criteria, ensure sufficient number of samples [33, 34]. The reference groups in this and other similar studies are not strikingly population based and results might slightly diverge. We addressed this concern by excluding all subjects with diagnoses and concomitant medications that might affect thyroid function. By this the subjects fulfilled the criteria for a healthy population as is foreseen in the category ICD10 Z00.

Median concentrations of all thyroid parameters measured were highest in the first month of life and subsequently decreased with age, apart from fT3 values of males aged 1 – 5 years and females aged 6 – 10 years. Overall, our reference data concur with those of previous studies in pediatric cohorts using various analytical methods. Slight differences of our reference intervals compared to previous studies (tables 4, 5, 6) might be explained by different analytical assays, differences in ethnicity, population or geographic derived covariates such as lifestyle, salt iodination, and nutrition. The last evaluation of iodine status done by our study group with adult patients in 2000 showed a mean value of urinary excretion of 120 µg iodine/gr creatinine (R. Moncayo, unpublished data analyzed 2002).

Significant sex differences were observed only for fT3 in our study cohort. Interestingly, Hübner et al. found sex-specific effects also on fT3 residuals, but only within the age group 11 – 14 using the same Advia<sup>®</sup> Centaur<sup>™</sup>

**Table 3: Percentiles for fT4 (pmol/L) of children and adolescents in different age groups.**

Age	n	percentiles						
		2.5	10	25	50	75	90	97.5
0 – 1 months	23	8.50	8.98	13.50	20.10	24.70	28.48	30.50
1–12 months	45	9.17	13.10	14.00	15.50	17.20	19.22	25.28
1–5 Years	229	10.45	12.80	14.15	15.70	17.90	19.70	22.35
6–10 Years	327	10.60	12.80	14.40	15.90	17.30	18.90	20.90
11–14 Years	364	10.40	12.15	13.40	15.20	16.80	19.05	21.36
15–18 Years	233	10.57	11.74	13.50	15.20	16.90	18.80	22.62

**Table 4: Comparison of our TSH reference intervals to previously published reference intervals (2.5, 50 and 97.5%) of different age groups.**

TSH	Age	Soldin et al., 1995 Abbott IMx®	Zurakowski et al., 1999 DELFIA®	Elmlinger et al., 2001 Immulin®	Djemli et al., 2004 Access 2®	Hübner et al., 2002 Advia Centaur®	Kapelari et al., Advia Centaur®
		[mU/L] n = 533	[mU/L] n = 5,558	[mU/L] n = 762	[mU/L] n = 706	[mU/L] n = 460	[mU/L] n = 1,209
	<b>1 d – 7 d</b>	F: 0.72 – 13.1	n.d.	1.79 – 4.63 – 9.69	F: 1.5 – 3.3 – 6.5	0.13 – 9.23 <sup>a</sup>	0.75 – 3.50 – 16.89
	<b>8 d–15 d</b>	M: 0.52 – 16.0	n.d.	1.80 – 3.71 – 7.97	M: 0.7 – 2.4 – 9.8	0.16 – 8.48 <sup>b</sup>	
	<b>15 d – 1 m</b>		n.d.	n.d.			
	<b>1 – 12 m</b>		0.8 – 2.2 – 6.3		F: 1.0 – 2.4 – 5.7	0.3 – 1.73 – 5.88 <sup>c</sup>	1.30 – 2.85 – 7.09
	<b>1 – 2 y</b>			0.63 – 2.04 – 4.12	M: 0.7 – 2.1 – 5.9		
	<b>2 – 3 y</b>	F: 0.46 – 8.1	F: 0.7 – 2.0 – 5.9		n.d.	0.42 – 1.98 – 4.79	1.00 – 2.70 – 5.42
	<b>3 – 4 y</b>	M: 0.55 – 7.1	M: 0.7 – 2.1 – 6.0		n.d.		
	<b>4 – 5 y</b>			0.53 – 1.60 – 2.94	n.d.		
	<b>5 – 6 y</b>	F: 0.36 – 5.8			n.d.		
	<b>7 – 8</b>	M: 0.37 – 6.0	F: 0.6 – 1.8 – 5.1	0.80 – 1.86 – 3.48	n.d.	0.48 – 1.87 – 4.67	0.90 – 2.30 – 4.40
	<b>9 – 10</b>		M: 0.7 – 1.9 – 5.4	0.85 – 2.00 – 3.50	F: 0.9 – 2.0 – 4.0		
					M: 1.0 – 1.9 – 3.7		
	<b>11</b>			0.85 – 1.90 – 3.33			
	<b>12</b>		F: 0.5 – 1.5 – 4.4	0.86 – 1.90 – 3.21	F: 0.7 – 1.7 – 3.4	0.53 – 1.78 – 4.58	0.90 – 2.10 – 4.10
	<b>13</b>		M: 0.6 – 1.7 – 4.9	0.80 – 1.81 – 3.08	M: 0.8 – 1.8 – 3.9		
	<b>14</b>			0.76 – 1.70 – 2.83			
	<b>15</b>			0.70 – 1.56 – 2.55			
	<b>16</b>			0.64 – 1.54 – 2.51	F: 0.6 – 1.5 – 3.7	0.56 – 2.00 – 4.53	0.70 – 1.70 – 3.93
	<b>17</b>		F: 0.5 – 1.3 – 3.9	0.62 – 1.51 – 2.42	M: 0.7 – 1.4 – 2.8		
	<b>18 – 19</b>		M: 0.5 – 1.6 – 4.4	0.52 – 1.36 – 2.36	n.d.		

<sup>a</sup> 1 d – 3 d<sup>b</sup> 4 d – 30 d<sup>c</sup> 61 d – 12 m

**Table 5: Comparison of our fT3 reference intervals to previously published reference intervals (2.5, 50 and 97.5%) of different age groups.**

fT3	Age	Soldin et al., 1995 Abbott IMx®	Elmlinger et al., 2001 Immulite®	Hübner et al., 2002 Advia Centaur®	Kapelari et al., Advia Centaur®
		[pmol/L] n = 1,069	[pmol/L] n = 762	[pmol/L] n = 460	[pmol/L] n = 1,295
	1 d – 7 d	2.2 – 7.4	2.76 – 6.91 – 11.67	2.32 – 8.11 <sup>a</sup>	F: 5.00 – 6.60 – 7.50
	8 – 15 d	2.2 – 8.4	2.84 – 5.53 – 11.86	2.40 – 7.94 <sup>b</sup>	M: 4.60 – 6.30 – 10.10
	15 d – 1 m		n.d.		
	1 – 12 m	3.1 – 10.6		2.72 – 5.27 – 7.30 <sup>c</sup>	F: 4.30 – 6.15 – 7.60 M: 4.30 – 6.20 – 7.50
	1 – 2 y		3.28 – 6.08 – 11.06	3.05 – 5.63 – 6.93	F: 4.45 – 6.15 – 7.46 M: 4.70 – 6.30 – 7.84
	2 – 3 y				
	3 – 4 y	3.7 – 10.3			
	4 – 5 y		3.43 – 6.57 – 10.97		
	5 – 6 y				F: 4.60 – 6.20 – 7.30
	7 – 8	4.4 – 9.2	3.58 – 6.71 – 10.75	3.30 – 5.58 – 6.79	M: 4.80 – 6.10 – 7.20
	9 – 10		3.72 – 6.44 – 10.87		
	11		3.76 – 6.13 – 9.98		
	12		3.76 – 5.88 – 8.86	3.46 – 5.54 – 6.7	F: 4.41 – 5.90 – 7.00
	13	4.8 – 9.1	3.84 – 5.64 – 8.03		M: 4.90 – 6.00 – 7.00
	14		3.81 – 5.45 – 7.28		
	15		3.69 – 5.16 – 6.87		
	16		3.61 – 4.98 – 6.88	3.57 – 5.33 – 6.65	F: 4.08 – 5.30 – 6.80
	17	5.4 – 8.8	3.54 – 4.76 – 6.60		M: 4.60 – 5.80 – 7.10
	18 – 19		3.52 – 4.65 – 6.30		

<sup>a</sup> 1 d – 3 d  
<sup>b</sup> 4 d – 30 d  
<sup>c</sup> 61 d – 12 m

analyzer system [4]. Soldin et al [5] reported sex specific reference ranges without testing for statistical significance, and Djemli et al. [6] found significant differences between girls and boys on fT4 residuals only within the age group 15 – 17, whereas Elmlinger et al. [3] did not find any sex differences between sexes, also by adjusting for pubertal stage. The reason for these inconsistent findings remains unclear. Further studies in children and adolescents are needed to investigate, whether there is a significant influence of sex on thyroid hormone levels justifying distinct reference intervals.

Interestingly, in the longitudinal subgroup of 32 children with initially elevated TSH levels in the first serum sample, TSH decreased to normal without treatment within 3 – 6 months. Decision not to treat these children was based on the clinical status, since it did not correspond to subclinical or clinical hypothyroidism even though the initial TSH value was elevated. This phenomenon suggests the presence of transient benign conditions affecting thyroid function. We therefore recommend that patients with initially elevated TSH values should be retested in approximately 3 to 6 months interval, before considering replacement therapy [35]. In addition the levels of fT3, fT4, the presence of thyroperoxidase antibodies, and, in specific cases, the

degree of stimulated TSH elevations should be taken into account before classifying a child or adolescent as hypothyroid [36, 37]. Further prospective studies in children, similar to that of Huber et al. [38] in adults, are needed to study the spontaneous course of subclinical hypothyroidism in children and adolescents, and to determine risk factors for the development of overt hypothyroidism.

Apart from the age group 15 – 18 years, differences were observed to the published reference intervals for adult populations, especially for TSH. Recently, some authors argued for a reduction of the upper cut off range for TSH to 2.5 mU/L or somewhat more moderate to 3.0 mU/L in adults [15, 16, 39, 40]. Applying this upper range to pediatric patients might lead to a considerable high number of false diagnoses of hypothyroidism and result in unnecessary lifelong replacement therapy. A similar scenario has already been described for TSH reference values for adults [41].

In conclusion, this study provides pediatric reference intervals for thyroid function tests from birth to young adulthood for a middle European population. Thyroid hormone levels markedly change during childhood without showing significant sex differences, except for

**Table 6: Comparison of our fT4 reference intervals to previously published reference intervals (2.5, 50 and 97.5%) of different age groups.**

fT4	Age	Soldin et al., 1995	Zurakowski et al., 1999	Elmlinger et al., 2001	Djemli et al., 2004	Hübner et al., 2002	Kapelari et al. Advia
		Abbott IMx® [pmol/L] n = 1,173	DELFLIA® [pmol/L] n = 353	Immulite® [pmol/L] n = 762	Access 2® [pmol/L] n = 710	Advia Centaur® [pmol/L] n = 460	Centaur® [pmol/L] n = 1,221
	<b>1d – 7d</b>	F: 11 – 25 M: 10 – 36	n.d.	29.60 – 62.40 – 79.20	F: 11.0 – 13.6 – 22.3	10.8 – 26.8 <sup>a</sup>	8.54 – 20.10 – 30.20
	<b>8 – 15 d</b>	F: 8 – 25	n.d.	18.00 – 42.30 – 63.60	M: 9.8 – 12.2 – 23.2	10.9 – 25.5 <sup>b</sup>	
	<b>15 d – 1 m</b>	M: 6 – 30	n.d.	n.d.			
	<b>1 – 12 m</b>	F: 11 – 24 M: 10 – 26	9.5 – 19.5 – 39.5	11.10 – 19.70 – 27.30	F: 9.0 – 11.3 – 16.1	11.4 – 14.5 – 20.9 <sup>c</sup>	11.95 – 15.50 – 22.51
	<b>1 – 2 y</b>				M: 8.7 – 11.7 – 16.2		
	<b>2 – 3 y</b>	F: 13 – 22	9.0 – 18.4 – 37.2		n.d.	11.4 – 14.7 – 19.0	11.90 – 15.70 – 20.85
	<b>3 – 4 y</b>	M: 12 – 21			n.d.		
	<b>4 – 5 y</b>			12.90 – 17.30 – 23.90	n.d.		
	<b>5 – 6 y</b>				n.d.		
	<b>7 – 8</b>	F: 11 – 20	8.3 – 16.9 – 34.1	12.90 – 19.30 – 24.50	n.d.	11.0 – 14.2 – 18.8	11.54 – 15.90 – 19.96
	<b>9 – 10</b>	M: 10 – 22		10.30 – 17.00 – 23.80	F: 9.6 – 11.6 – 14.5 M: 9.7 – 11.7 – 14.2		
	<b>11</b>			11.80 – 16.70 – 22.65			
	<b>12</b>	F: 10 – 19		10.40 – 16.20 – 22.91	F: 8.8 – 10.7 – 13.5	10.8 – 13.6 – 18.7	11.10 – 15.20 – 20.00
	<b>13</b>	M: 12 – 20	7.6 – 15.5 – 31.5	8.50 – 16.50 – 22.52	M: 8.4 – 10.8 – 13.0		
	<b>14</b>			12.20 – 16.50 – 23.30			
	<b>15</b>			9.10 – 17.00 – 23.40		10.7 – 14.4 – 18.7	10.80 – 15.20 – 20.33
	<b>16</b>	F: 11 – 19		12.90 – 16.70 – 23.30	F: 8.7 – 10.7 – 13.6		
	<b>17</b>	M: 12 – 20	7.0 – 14.1 – 28.7	11.80 – 17.40 – 22.50	M: 9.5 – 11.8 – 15.0		
	<b>18 – 19</b>			9.30 – 14.50 – 20.50	n.d.		

<sup>a</sup> 1 d – 3 d<sup>b</sup> 4 d – 30 d<sup>c</sup> 61 d



fT3. Moreover, differences of our reference intervals compared to previous studies were observed, likely caused by different antibody characteristics of various analytical methods, different populations or unknown geographic covariates. Our results argue in favor that adult reference intervals are not universally applicable to children. These reference intervals may serve as a tool for the correct interpretation of individual thyroid hormone results of children and adolescents.

## Conclusion

Our results corroborate those of previous studies showing that thyroid hormone levels change markedly during childhood, and that adult reference intervals are not universally applicable to children. Moreover, differences of our reference intervals compared to previous studies were observed, likely caused by different antibody characteristics of various analytical methods, different populations or undefined geographic covariates, e.g. iodine and selenium status.

## Abbreviations

TSH: thyrotropin; fT3: free triiodothyronine; fT4: free thyroxine.

## Competing interests

The authors declare that they have no competing interests.

## Authors' contributions

KK drafted the manuscript, designed and coordinated the study together with RM. CK collected retrospectively patient data and performed statistical analysis together with RM. RM and IV were in charge of the immunoassays. WH and KS participated in patient data collection. All authors read and approved the final manuscript.

## Acknowledgements

We kindly acknowledge the analytical work done by the technicians of the Department of Nuclear Medicine, Medical University of Innsbruck.

## References

- Dayan CM: **Interpretation of thyroid function tests.** *Lancet* 2001, **357**:619-624.
- Zurakowski D, Di Canzio J and Majzoub JA: **Pediatric reference intervals for serum thyroxine, triiodothyronine, thyrotropin, and free thyroxine.** *Clin Chem* 1999, **45**:1087-1091.
- Elmlinger MW, Kuhnel W, Lambrecht HG and Ranke MB: **Reference intervals from birth to adulthood for serum thyroxine (T4), triiodothyronine (T3), free T3, free T4, thyroxine binding globulin (TBG) and thyrotropin (TSH).** *Clin Chem Lab Med* 2001, **39**:973-979.
- Hubner U, Englisch C, Werkmann H, Butz H, Georgs T, Zabransky S and Herrmann W: **Continuous age-dependent reference ranges for thyroid hormones in neonates, infants, children and adolescents established using the ADVIA Centaur Analyzer.** *Clin Chem Lab Med* 2002, **40**:1040-1047.
- Soldin SJ, Morales A, Albalos F, Lenherr S and Rifai N: **Pediatric reference ranges on the Abbott IMx for FSH, LH, prolactin, TSH, T4, T3, free T4, free T3, T-uptake, IgE, and ferritin.** *Clin Biochem* 1995, **28**:603-606.
- Djemli A, Van Vliet G, Belgoudi J, Lambert M and Delvin EE: **Reference intervals for free thyroxine, total triiodothyronine, thyrotropin and thyroglobulin for Quebec newborns, children and teenagers.** *Clin Biochem* 2004, **37**:328-330.
- Wiedemann G, Jonetz-Mentzel L and Panse R: **Establishment of reference ranges for thyrotropin, triiodothyronine, thyroxine and free thyroxine in neonates, infants, children and adolescents.** *Eur J Clin Chem Clin Biochem* 1993, **31**:277-278.
- Surks MI and Sievert R: **Drugs and thyroid function.** *N Engl J Med* 1995, **333**:1688-1694.
- Vogeser M, Weigand M, Fraunberger P, Fischer H and Cremer P: **Evaluation of the ADVIA Centaur TSH-3 assay.** *Clin Chem Lab Med* 2000, **38**:331-334.
- Rawlins ML and Roberts WL: **Performance characteristics of six third-generation assays for thyroid-stimulating hormone.** *Clin Chem* 2004, **50**:2338-2344.
- Moncayo R, Moncayo H and Virgolini I: **Reference values for thyrotropin.** *Thyroid* 2005, **15**:1204-1205.
- Moncayo H, Dapunt O and Moncayo R: **Diagnostic accuracy of basal TSH determinations based on the intravenous TRH stimulation test: an evaluation of 2570 tests and comparison with the literature.** *BMC Endocr Disord* 2007, **7**:5.
- Surks MI, Goswami G and Daniels GH: **The thyrotropin reference range should remain unchanged.** *J Clin Endocrinol Metab* 2005, **90**:5489-5496.
- Draper NR: **Applied regression analysis bibliography update 1994-97.** *Communications in Statistics-Theory and Methods* 1998, **27**:2581-2623.
- Baskin HJ, Cobin RH, Duick DS, Gharib H, Guttler RB, Kaplan MM and Segal RL: **American Association of Clinical Endocrinologists medical guidelines for clinical practice for the evaluation of treatment of hyperthyroidism and hypothyroidism.** *Endocr Pract* 2002, **8**:457-467.
- National Academy of Clinical Biochemistry: **NACB laboratory medicine practice guidelines.** <http://www.nacb.org/lmpg/main.stm>.
- Zophel K, Wunderlich G, Gruning T, Koch R, Doge H and Kotzerke J: **[Where does subclinical hypothyroidism start? Implications for the definition of the upper reference limit for thyroid stimulating hormone].** *Nuklearmedizin* 2005, **44**:56-61.
- Zophel K, Wunderlich G and Kotzerke J: **Should we really determine a reference population for the definition of thyroid-stimulating hormone reference interval?.** *Clin Chem* 2006, **52**:329-330.
- Kratzsch J, Fiedler GM, Leichtle A, Brugel M, Buchbinder S, Otto L, Sabri O, Matthes G and Thiery J: **New reference intervals for thyrotropin and thyroid hormones based on National Academy of Clinical Biochemistry criteria and regular ultrasonography of the thyroid.** *Clin Chem* 2005, **51**:1480-1486.
- d'Herbomez M, Forzy G, Gasser F, Massart C, Beaudonnet A and Sapin R: **Clinical evaluation of nine free thyroxine assays: persistent problems in particular populations.** *Clin Chem Lab Med* 2003, **41**:942-947.
- Demers LM and Spencer CA: **Laboratory medicine practice guidelines: laboratory support for the diagnosis and monitoring of thyroid disease.** *Clin Endocrinol (Oxf)* 2003, **58**:138-140.
- Soukhova N, Soldin OP and Soldin SJ: **Isotope dilution tandem mass spectrometric method for T4/T3.** *Clin Chim Acta* 2004, **343**:185-190.
- Gu J, Soldin OP and Soldin SJ: **Simultaneous quantification of free triiodothyronine and free thyroxine by isotope dilution tandem mass spectrometry.** *Clin Biochem* 2007, **40**:1386-1391.
- Soldin SJ, Soukhova N, Janicic N, Jonklaas J and Soldin OP: **The measurement of free thyroxine by isotope dilution tandem mass spectrometry.** *Clin Chim Acta* 2005, **358**:113-118.
- Despres N and Grant AM: **Antibody interference in thyroid assays: a potential for clinical misinformation.** *Clin Chem* 1998, **44**:440-454.
- Landau-Levine M, Way BA, Clutter WE, Scott MG and Gronowski AM: **Antibody interference with the Abbott AxSym immunoassay for thyroid-stimulating hormone.** *Clin Chim Acta* 1999, **281**:177-180.
- Martel J, Despres N, Ahnadi CE, Lachance JF, Monticello JE, Fink G, Ardemagni A, Banfi G, Tovey J and Dykes P, et al: **Comparative multicentre study of a panel of thyroid tests using different automated immunoassay platforms and specimens at high risk of antibody interference.** *Clin Chem Lab Med* 2000, **38**:785-793.
- Kricka LJ: **Interferences in immunoassay—still a threat.** *Clin Chem* 2000, **46**:1037-1038.
- Ekins R: **Validity of analog free thyroxin immunoassays.** *Clin Chem* 1987, **33**:2137-2144.

30. Kahric-Janjic N, Soldin SJ, Soldin OP, West T, Gu J and Jonklaas J: **Tandem mass spectrometry improves the accuracy of free thyroxine measurements during pregnancy.** *Thyroid* 2007, **17**:303–311.
31. Waskiewicz D, Burkhardt A and Emancipator K: **Performance characteristics of 6 third-generation assays for thyroid-stimulating hormone.** *Clin Chem* 2005, **51**:1904–1905.
32. Singh RJ and Eisenhofer G: **High-throughput, automated, and accurate biochemical screening for pheochromocytoma: are we there yet?.** *Clin Chem* 2007, **53**:1565–1567.
33. Kouri T, Kairisto V, Virtanen A, Uusipaikka E, Rajamaki A, Finneman H, Juva K, Koivula T and Nanto V: **Reference intervals developed from data for hospitalized patients: computerized method based on combination of laboratory and diagnostic data.** *Clin Chem* 1994, **40**:2209–2215.
34. Harwood SJ and Cole GW: **Reference values based on hospital admission laboratory data.** *JAMA* 1978, **240**:270–274.
35. Diez JJ, Iglesias P and Burman KD: **Spontaneous normalization of thyrotropin concentrations in patients with subclinical hypothyroidism.** *J Clin Endocrinol Metab* 2005, **90**:4124–4127.
36. Ladenson PW, Singer PA, Ain KB, Bagchi N, Bigos ST, Levy EG, Smith SA and Daniels GH: **American thyroid association guidelines for detection of thyroid dysfunction.** *Archives of Internal Medicine* 2000, **160**:1573–1575.
37. Cooper DS: **Clinical practice. Subclinical hypothyroidism.** *N Engl J Med* 2001, **345**:260–265.
38. Huber G, Staub JJ, Meier C, Mitrache C, Guglielmetti M, Huber P and Braverman LE: **Prospective study of the spontaneous course of subclinical hypothyroidism: prognostic value of thyrotropin, thyroid reserve, and thyroid antibodies.** *J Clin Endocrinol Metab* 2002, **87**:3221–3226.
39. Stephens PA: **The Endocrine Society: current issues in thyroid disease management.** *Endocr News* 2004, **29**:23–26.
40. Dayan CM, Saravanan P and Bayly G: **Whose normal thyroid function is better—yours or mine?.** *Lancet* 2002, **360**:353.
41. Fatourechi V, Klee GG, Grebe SK, Bahn RS, Brennan MD, Hay ID, McIver B and Morris JC III: **Effects of reducing the upper limit of normal TSH values.** *JAMA* 2003, **290**:3195–3196.

### Pre-publication history

The pre-publication history for this paper can be accessed here:

<http://www.biomedcentral.com/1472-6823/8/15/prepub>

Publish with **BioMed Central** and every scientist can read your work free of charge

"BioMed Central will be the most significant development for disseminating the results of biomedical research in our lifetime."

Sir Paul Nurse, Cancer Research UK

Your research papers will be:

- available free of charge to the entire biomedical community
- peer reviewed and published immediately upon acceptance
- cited in PubMed and archived on PubMed Central
- yours — you keep the copyright

Submit your manuscript here:  
[http://www.biomedcentral.com/info/publishing\\_adv.asp](http://www.biomedcentral.com/info/publishing_adv.asp)

