

Isolation and Identification of Phyllospheric Bacteria Possessing Antimicrobial Activity from *Astragalus obtusifolius*, *Prosopis juliflora*, *Xanthium strumarium* and *Hippocrepis unisiliquosa*

Zohreh Mazinani, Marzieh Zamani, and Soroush Sardari *

Drug Design and Bioinformatics Unit, Department of Medical Biotechnology, Biotechnology Research Center, Pasteur Institute of Iran, Tehran, Iran

Abstract

Background: The widespread utilization of antimicrobial compounds has caused emergence of resistant microorganisms in the world. Hence, the research to probe the products with antimicrobial features has led to finding natural habitats and discovering new pharmaceutical products.

Methods: In this study, an attempt was made to explore the niche of novel habitat to isolate phyllospheric bacteria from the above ground parts (stems and leaves) of *Astragalus obtusifolius*, *Prosopis juliflora*, *Xanthium strumarium*, and *Hippocrepis unisiliquosa* to evaluate their antimicrobial features. The inhibitory effects of these strains on the growth of two fungi (*Aspergillus niger*, *Aspergillus fumigatus*), two yeasts (*Saccharomyces cerevisiae*, *Candida albicans*) and six bacteria (*Escherichia coli*, *Staphylococcus aureus*, *Pseudomonas aeruginosa*, *Bacillus subtilis*, *Salmonella typhi*, *Streptococcus pyogenes*) were tested.

Results: In total, 113 bacterial strains were isolated. Twenty five bacterial strains (B-1 to B-25) indicated promising antimicrobial (antibacterial and antifungal) activities against aforementioned pathogens. The identification of the bacterial strains was ascertained by morphological, physiological, biochemical tests and two strains with the strongest antimicrobial activities were further characterized based on 16s rRNA sequencing. These two strains were identified as *Bacillus amyloliquefaciens*.

Conclusion: Our results provide evidence that phyllospheric microorganisms are capable of producing some compounds with antimicrobial properties.

Avicenna J Med Biotech 2017; 9(1): 31-37

Keywords: Antimicrobial agents, 16s rRNA, *Bacillus amyloliquefaciens*

* Corresponding author:
Soroush Sardari, Ph.D., Drug
Design and Bioinformatics Unit,
Department of Medical
Biotechnology, Biotechnology
Research Center, Pasteur Institute
of Iran, Tehran, Iran
Tel: +98 21 66953311
E-mail:
ssardari@hotmail.com
Received: 21 Dec 2015
Accepted: 14 May 2016

Introduction

The aerial portions of plants such as buds, fruits and other above-ground parts as leaves and stems that make a habitat for microorganisms are called phyllosphere^{1,2}. It is an exclusive and dynamic environment that is believed to play a role in irregular and sometimes large changing of temperature, UV radiation and leaf humidity³.

Microbes can be found on different segments of plants as epiphytes on the surface and as endophytes inside the plant tissues. The most important microbial inhabitants in phyllosphere are bacteria; however, the other microorganism populations such as archaea, filamentous fungi, and yeasts are considered to be significant and are present as well^{4,5}. These bacteria include both pathogenic and non-pathogenic population that contribute to health condition of the host plant and may even play global role in carbon and nitrogen cycles⁶⁻⁹. It should be noticed that among nearly 300,000 available plant species living on earth that each is a

host to at least one of these mentioned phyllospheric bacteria, only a little portion of them has been fully studied¹⁰. Different bacteria have been isolated from different sources of plants such as trees (pines, yew), vegetables (carrot, tomatoes, soybean), fruits (citrus, pineapple) fodders (alfalfa, clover) and other crops as wheat and maize grains and coffee beans¹¹.

These bacteria have been isolated from woody plants such as gymnosperms and angiosperms and from flower, leaf, stem and fruit of different plant species as well^{12,13}. The contribution of these phyllospheric bacteria to various activities has been reported such as the contribution in defense mechanisms of plants¹¹, biological nitrogen fixation¹⁴, increasing plant mineral absorption¹⁵, decreasing disease severity^{16,17} and inducing plant growth¹⁸.

Moreover, it has been reported that endophyte bacteria can produce a number of metabolites and secondary metabolites such as antibiotics, antitumor com-

pounds and plant growth inducing factors together with other factors like biological control agents, anti-inflammatory and biological control agents¹⁹.

Astragalus obtusifolius, *Prosopis juliflora* and *Hippocrepis unisiliquosa*, families of *Fabaceae* are legumes that grow naturally in arid and semi-arid parts of the world. They have been observed in many tropical regions including Southeast Asia, South Asia, North-eastern Brazil, Australia and Africa. They have been reported to be resistant to salinity, heat and drought; and produce annually 10- 50 kg of pods used as a dietary resource for livestock and food resources for human. The flowers are small and individually invisible, both male and female, occurring in dense heads or clusters^{20,21}.

Xanthium strumarium is one of the members of *Asteraceae* family, an herb of several crops in the subtropical and temperate areas of the world, which is capable of invading watercourses, along beaches, railway and deserted places, roadsides, cultivated fields and edges, and dunes. It is an herbaceous annual plant, up to 2.5 m tall, and its leaves are broad, 15 cm in diameter and practically textured with some bristles^{22,23}.

Antimicrobial compounds are usually produced by *Bacillus* strains. *Bacillus* is a spore-forming bacterium and is capable to live in most habitats²⁴. The aim of this research was to investigate whether the internal tissues and external surfaces of four plant species *Astragalus obtusifolius*, *Prosopis juliflora*, *Xanthium strumarium* and *Hippocrepis unisiliquosa* are colonized by phyllospheric bacteria, to isolate and characterize phyllospheres and to test their antimicrobial features. This is the first report of isolation of phyllospheric bacteria from the cited plants.

Materials and Methods

Plant materials

Phyllospheric (endophytic and epiphytic) bacteria were isolated from *Astragalus obtusifolius*, *Hippocrepis unisiliquosa*, *Prosopis juliflora* belonging to the family of *Fabaceae* and *Xanthium strumarium* belonging to the family of *Asteraceae*. The above ground parts of plants were collected between 2007-08 from four locations in Khuzestan, Iran and transported to the laboratory. A total of 2 kg plant tissues were collected from each location.

Isolation of bacterial strains

The collected plants tissues (stems, leaves) were washed under running tap water to remove soil particles. Samples were then dried for 7 days at room temperature and were powdered by electric mills. 0.02 grams of plant powders were added to 15 ml of sterile distilled water for homogenization. 2-3 ml of these plant solutions were aseptically transferred to plates containing tryptic soy agar (TSA, Sigma, Germany) medium²⁵. Benomyl (50 mg/ml of each) was added to the medium to suppress fungal growth¹⁶. Plates were incubated for 4-7 days at 37°C. Isolated colonies were

purified on TSA plates and pure strains were maintained on 20% (v/v) glycerol at -20°C for further studies²⁶.

Antimicrobial activity assay

Test organisms: Antimicrobial activity of the purified isolates was carried out against many bacterial pathogens and fungal pathogens, including Gram positive organisms *Staphylococcus aureus* (ATCC 25923), *Streptococcus pyogenes* (ATCC 8668), and *Bacillus subtilis* (PTCC 1365), and the Gram negative bacteria *Escherichia coli* (ATCC 25922), *Pseudomonas aeruginosa* (*P. aeruginosa*) (ATCC 27853) and *Salmonella typhi* (PTCC 1609); and the test fungi used were *Candida albicans* (ATCC 10231), *Saccharomyces cerevisiae* (BY 4743), *Aspergillus niger* (N 402) and *Aspergillus fumigatus* (AF 293) on Nutrient Agar medium (NA, HiMedia, Mumbai) and Sabouraud Dextrose Agar medium (SDA, Merk, Germany), respectively. All the reference strains were obtained from the Department of Microbiology, Pasteur Institute of Iran, Tehran. In the present study, a microbial lawn was made to culture the reference isolates. Afterwards, the bacterial isolates were placed onto the lawn made in NA and SDA plates. The plates were incubated at 37°C for 24 and 48 hr in the case of bacterial and fungal pathogens, respectively²⁷. They were observed for a zone of growth inhibition and the isolates which showed positive antimicrobial activities were selected for phenotypic and genotypic studies.

Phenotypic characterization

The bacterial strains were identified to the genus-level based on the colony morphology (appearance, size, margin, form, elevation), microscopic examination (gram's and endospore staining), physiological tests (growth at different NaCl concentrations, temperature and pH) and biochemical tests (catalase, oxidase, nitrate reduction, starch hydrolysis, casein hydrolysis, Voges Proskauer, citrate utilization, gelatin liquefaction, methyl red) by adopting standard procedures^{16,28,29}. The strains were coded and started with B-1, and the last number was B-25.

Genotypic characterization

The genomic DNA of two bioactive isolates (having an inhibition zone against the majority of the test organisms) was extracted as described by Lee *et al*³⁰. The extracted DNA was diluted in sterile water and stored at -20°C. 16S rDNA amplification was performed using the universal primers 8F (5'-AGAGTTT-GATCCTGGCTCAG-3') and 1492R (5'-GGTTAC-CTTGTTACGACTT-3') as described by Singh *et al*³¹. The PCR reaction was performed for 30 cycles in a Thermal Cycler (Eppendorf, Germany), and the thermal program used for the PCR was under the following conditions: initial denaturation at 95°C for 2 min, final denaturation at 94 °C for 30 s, primer annealing at 50 °C for 30 s, extension at 72 °C for 90 s and an addition of 10 min at 72°C as final extension. The PCR amplifica-

tion was performed with a total volume of 20 μ l containing 1 μ l of DNA, 1 μ l of 10 pmol 8F primer, 1 μ l of 10 pmol 1492R primer (purchased from Generay Biotech, Shanghai, China), 10 μ l of Master Mix (Vivantis) and 7 μ l of sterile MilliQ water. PCR product was subjected to electrophoresis on 1.2 % (w/v) agarose gels in 1 \times TAE Buffer for 30 min at 90 V. The amplified product was visualized with UV-transilluminator. The nucleotide sequences of the 16S rRNA gene of isolates were determined using the dideoxy chain termination method utilizing big dye terminator ready reaction mix. The nucleotide sequences of the 16S rRNA gene of two isolates were registered in GenBank with accession number KM189814 (<http://www.ncbi.nlm.nih.gov/nucleotide/KM189814>) and KM189815 (<http://www.ncbi.nlm.nih.gov/nucleotide/KM189815>).

Multiple sequence alignments were carried out using MEGA 5 software (<http://www.megasoftware.net/>). For phylogenetic analyses, obtained sequences were compared to those available in the GenBank (www.ncbi.nlm.nih.gov) databases and a phylogenetic tree was constructed by the Neighbor Joining (NJ) algorithm³² (Figure 1).

Results

Isolation of bacterial strains

Endophytic and epiphytic strains were observed emerging from the above ground parts of plants sampled 4-7 days after incubation. A total of 104 bacterial strains were isolated from the four plants species, among which 18 were from *Astragalus obtusifolius*, 32 from *Prosopis juliflora*, 31 from *Xanthium strumarium* and 23 from *Hippocrepis unisiliquosa*.

Antimicrobial assay

Based on the results of antimicrobial activity (Table 1), 25 strains (26%) showed a zone of growth inhibition against one or more of the test organisms. Of 25 bioactive strains, 7 strains (B-1, B-3, B-4, B-7, B-12, B-21, and B-22) showed good antimicrobial activities against one or more of test pathogens. Among these strains, 3 (B-1, B-4 and B-22) had antibacterial activity and 4 (B-3, B-7, B-12 and B-21) showed broad antimicrobial activities from which 2 strains were selected for species identification. Interestingly, the isolate B-4 had potent antibacterial activity against *B. subtilis* (Figure 2). It is in accordance with the result of Hung *et al*²⁴ who indicated that out of 109 bacterial endophytes, 84% were capable of producing antimicrobial metabolites. In all microbial tests, standard comparison was done. The applied ATCC isolates were standard. Also, due to high reproducibility of the antimicrobial method, duplicate repeats were performed.

Phenotypic and genotypic characterization

Results of microscopic examination indicated that the selected isolates (B-7 and B-25) were Gram positive, motile, rod-shaped and endospore forming. The colonies were large, fast growing, wrinkled, and dry, white, irregular and flat on TSA medium incubated at 28°C. They grew well at 25-50°C, pH=6-9 and could tolerate up to 10% NaCl. Both of these isolates were positive for catalase, oxidase, nitrate reductase, citrate utilization, and starch- and casein-hydrolysis and negative for gelatin liquefaction, Voges-Proskauer, methyl red, and hydrolysis of urea tests. Phenotypic features of other isolates are shown in table 2 as described by Smibert *et al*³³.

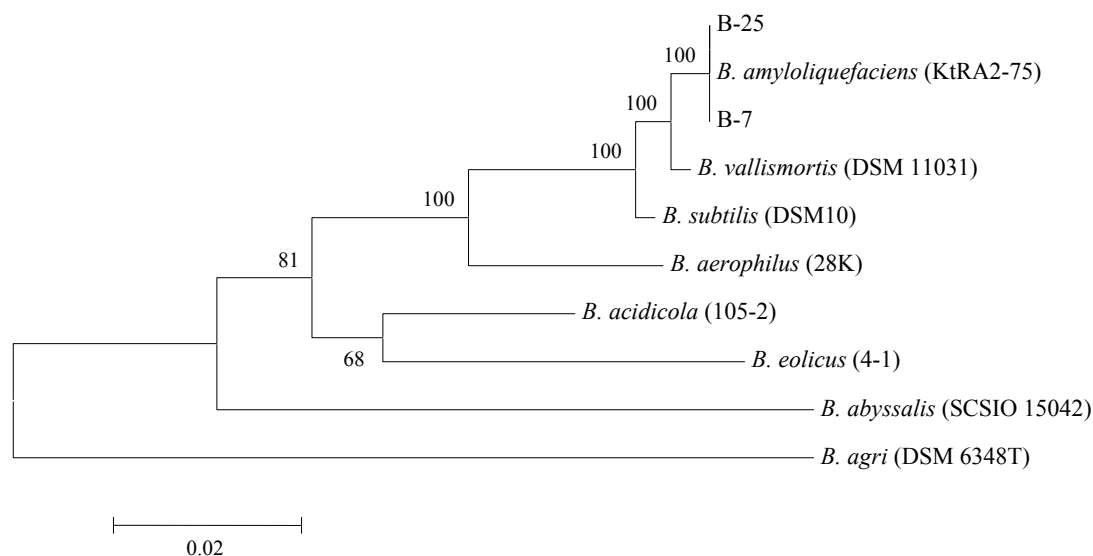


Figure 1. Phylogenetic tree based on 16S rRNA nucleotide sequences. The scale bar corresponds to 0.02-estimated nucleotide substitution per sequence position. Bootstrap values from 1000 replicates.

Antimicrobial Activities of Phyllospheric Bacteria

Table 1. Influence of bacterial strains isolated on the growth of the test organisms

Test strains	Inhibition zone (in mm diameter) caused by the test organisms								
	Gram positive bacteria			Gram negative bacteria			Yeast	Fungi	
	<i>S. aureus</i>	<i>S. pyogenes</i>	<i>B. subtilis</i>	<i>E. coli</i>	<i>S. typhi</i>	<i>C. albicans</i>	<i>S. cerevisiae</i>	<i>A. niger</i>	<i>A. fumigatus</i>
B-1	-	-	-	+	-	-	-	-	-
B-2	+	-	-	-	-	-	-	-	+
B-3	+	+	+	+	-	+	+	-	-
B-4	+	-	+	-	-	-	-	-	-
B-5, B-6, B-8	+	-	-	-	-	-	-	-	-
B-7, B-25	+	+	+	+	-	+	-	+	-
B-9, B-11	-	+	-	-	-	-	-	-	-
B-10, B-13	-	+	-	-	+	-	-	-	-
B-12	-	+	-	+	+	+	+	-	-
B-14	-	-	-	-	+	-	-	+	-
B-15, B-16	-	-	-	+	-	-	-	+	-
B-17	-	-	-	+	-	-	-	+	+
B-18	+	-	-	-	-	-	-	+	+
B-19	-	-	-	+	-	-	-	-	+
B-20, B-22, B-23	-	-	+	-	-	-	-	-	-
B-21	-	-	+	-	-	-	-	-	+
B-24	-	-	-	-	+	-	-	-	-

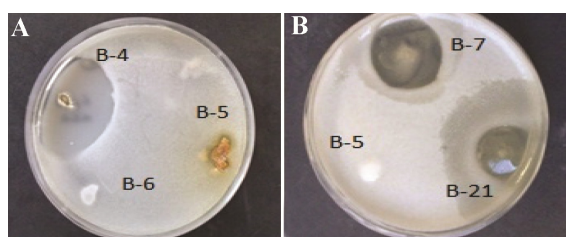


Figure 2. Zones of inhibition produced by a) strain B-4 against *B. subtilis* and b) strains B7 and B-21 against *C. albicans*.

These features revealed that the selected isolates belonged to the genus *Bacillus*. The identity was further confirmed by 16S rRNA gene sequencing and obtained results indicated 100% similarity to *Bacillus amyloliquefaciens* (Figure 2).

Discussion

Several authors have reported the presence of various bacteria species in plant samples, such as *Bacillus pumilus* (as dominant endophytes) in citrus plants³⁴, *Stenotrophomonas* sp. in sweet potato plant³⁵ and in the coffee seed³⁶, *Pseudomonas putida* in carrot³⁷, and *Serratia marcescens* isolated from rice³⁸. Our results indicated that bacillus can be obtained as epiphytes both inside leaves and stems tissues. It is in agreement with the obtained results by Ryan³⁹ and Dudjea *et al*⁴⁰ who reported the existence of *Bacillus* species and other endophytic bacteria on legume plants. The presence of bacillus generally inside the leaves and stems tissues plays a significant role in plant growth and health⁴¹. Dini Andreote *et al*⁴² reported bacillus' potential in controlling plant diseases and its ability in production of antimicrobial agents. In the present work, the pres-

ence of *Bacillus* in leaves and stems of two plant families from a tropical area was confirmed, as it was reported by Deng *et al*⁴³.

In this study, none of the strains was shown to be bioactive against *P. aeruginosa*. Antimicrobial studies of *bacillus* from plant tissues are rare. Goryluk *et al*⁴⁴ isolated 34 *bacillus* isolates from the above ground parts of *Chelidonium majus* in Warsaw, Poland, among which 19 exhibited antimicrobial properties. Only one isolate showed antifungal activity against all the tested organisms. Suciati *et al*⁴⁵ obtained 153 endophytic bacterial isolates from 67 plant species in West Java, Indonesia. 31 isolates exhibited excellent antimicrobial activities against test fungal isolates.

Genotypic analysis is in agreement with the obtained results by Ma *et al*⁴⁶ who isolated 104 endophytic bacteria from different tissues of *Panax notoginseng* and observed that the most major species in all parts of plants were *Bacillus amyloliquefaciens* subsp. Moreira *et al*²⁸ initially isolated *Bacillus* species from several different plants and identified them on the basis of the 16S rDNA sequence as *Bacillus amyloliquefaciens*. Chauhan *et al*⁴⁷ showed the predominance of *Bacillus* in different sugarcane varieties. These *Bacillus* strains were reported to have important antifungal activity. Athukorala *et al*⁴⁸ reported that *Bacillus* strains, from different microhabitats in Canada, had important antifungal activities. A novel *Bacillus* spp. AB1, with strong antifungal activity, was obtained from coffee phyllosphere of the Nile River in India by Nair *et al*⁴⁹. Muzzamal *et al*³² obtained *Bacillus* isolates from different plant tissues (stem, root, fresh and wilted leaves) in Punjab, Pakistan which were active against both Gram positive and Gram negative bacteri-

Table 2. Biochemical and physiological characteristics of *Bacillus* strains

Characteristics	B-1, B-2, B-17, B-18, B-20, B-21	B-3, B-7, B-9, B-13, B-22, B-23, B-25	B-14, B-24	B-4, B-15	B-6	B-5, B-8, B-10	B-12, B-16, B-19	B-11
Gram's staining	+	+	+	+	+	+	+	+
Endospore formation	+	+	+	+	+	+	+	+
Growth at	-	-	-	-	-	-	-	-
10 °C	+	+	+	+	+	+	+	+
25 °C	+	+	+	+	+	+	+	+
30 °C	+	+	+	+	+	+	+	+
37 °C	+	+	+	+	+	+	+	+
50 °C	+	+	+	+	+	+	+	+
65 °C	-	-	-	-	-	-	-	-
Growth at pH range								
6.0	+	+	+	+	+	+	+	+
7.0	+	+	+	+	+	+	+	+
8.0	+	+	+	+	+	+	+	+
9.0	+	+	+	+	+	+	+	+
Growth in the presence of								
3% NaCl	+	+	+	+	+	+	+	+
5% NaCl	+	+	+	+	+	+	+	+
7% NaCl	+	+	+	+	+	+	+	+
10% NaCl	+	+	+	+	+	+	+	+
Hydrolysis of								
Casein	+	+	+	+	+	+	+	+
Starch	-	+	-	+	-	+	+	+
Urea	-	-	-	+	-	-	-	+
Biochemical tests								
Catalase	+	+	+	+	+	+	+	+
Oxidase	+	+	+	+	+	+	+	+
Nitrate reduction	-	+	+	+	-	+	+	+
Gelatin liquefaction	-	-	-	-	-	+	-	-
Citrate utilization	+	+	+	+	-	-	-	-
Methyl Red (MR)	-	-	-	-	-	-	-	-
Voges Proskauer (VP)	-	-	-	-	-	-	-	-

al isolates. Wang *et al*^{50,51} reported the significance of water habitats as the source of bioactive *Bacillus*. They obtained *Bacillus* species from paddy fields in China. The culture suspension of this isolate was found to exhibit potent antifungal activity against plant pathogens.

Conclusion

As antibiotic resistance increases among human pathogenic organisms, there is an urgent need for development of new antibiotics. In this regard, exploring new sources of antibiotics is extremely important. Among the new sources, phyllospheric microorganisms that are capable of producing some compounds with antimicrobial properties are the typical ones.

Acknowledgement

This work was supported by Department of Medical Biotechnology, Pasteur Institute of Iran.

References

- Mukhtar I, Mushtaq S, Ali A, Khokhar I. Epiphytic and endophytic phyllosphere microflora of *Cassia filiformis* L. and its hosts. *Ecol Soc* 2010;5(3):17:1-8.
- Ferreira A, Quecine MC, Lacava PT, Oda S, Azevedo JL, Araujo WL. Diversity of endophytic bacteria from *Eucalyptus* species seed and colonization of seedling by *Pantoea agglomerans*. *FEMS Microbiol Lett* 2008;287(3):8-14.
- Redford A, Bowers R, Knight R, Linhart Y, Fierer N. The ecology of the phyllosphere: geographic and phylogenetic variability in the distribution of bacteria on tree leaves. *Environ Microbiol* 2010;12(3):2885-2893.
- Whipps JM, Hand P, Pink D, Bending GD. Phyllosphere microbiology with special reference to diversity and plant genotype. *J Appl Microbiol* 2008;105(2):1744-1755.
- Yadav RKP, Karamanoli K, Vokou D. Estimating bacterial population on the phyllosphere by serial and leaf imprint methods. *Ecol Soc* 2010;17(4):47-52.
- Leveau JHJ. Microbial communities in the phyllosphere. In: Riederer M, Muller C (eds.) *Biology of the plant cuticle*. Blackwell: Oxford; 2006. p. 334-367.
- Lindow SE, Brandl MT. Microbiology of the phyllosphere. *Appl Environ Microbiol* 2003;69(4):1875-1883.
- Slepecky RA, Hemphill HE. The genus *Bacillus* non-medical. In: Dworkin M, Falkow S, Rosenberg E, Schleifer KH, Stackebrandt E. *The prokaryotes*. 3rd ed. NY, USA: Springer science+ Business media: LLC; 2006. p. 530-562.

9. Zhang B, Bai Z, Hoefel D, Wang X, Zhang L, Li Z. Microbial diversity within the phyllosphere of different vegetable species. *Curr Res Technol Educ Top Appl Microbiol Microb Biotech* 2010;16(2):1067-1077.
10. Mandolesi Pereira de Melo F, Fiore MF, Alberto Beraldo de Moraes L, Estela Silva-Stenico M, Scramin Sh, Araújo Teixeira M, Soares I. Antifungal compound produced by the cassava endophytes bacillus pumilus MAIII4a. *Sci agric vol* 2009;66(2):583-592.
11. Bakker PA, Pieterse CM, Van Loon LC. Induced systemic resistance by fluorescent *Pseudomonas* spp. *Phytopathology* 2007;97(2):239-243.
12. Mano H, Morisaki H. Endophytic bacteria in the rice plant. *Microbes Environ* 2008;23(3):109-117.
13. Gyaneshwar P, James EK, Mathan N, Reddy PM, Reihhold-Hurek B, Ladha JK. Endophytic colonization of rice by a diazotrophic strain of *Serratia marcescens*. *J Bacteriol* 2001;183(8):2634-2645.
14. Martinez L, Mellado C, Orezco J, Romeiro M. Diazotrophic bacteria associated with banana (*Musa* spp). *Plant Soil* 2003;257(2):35-47.
15. Malinowski DP, Alloush GA, Belesky DP. Leaf endophyte *Newtyphodium coenophialum* modifies mineral uptake in tall fescue. *Plant Soil* 2000;227(3):115-126.
16. Kloepper JW, Ryu CM, Zhang S. Induced systemic resistance and promotion plant growth by *Bacillus* spp. *Phytopathol* 2004;94(2):1259-1266.
17. Sturz AV, Nowak. Endophytic communities of Rhizobacteria and the strategies required to create yield enhancing associated with crops. *Appl Soil Ecol* 2005;13(1):183-190.
18. Kang SH, Cho HS, Cheong H, Ryu CM, Kim JF, Park S-H. Two bacterial endophytes eliciting both plant growth promotion and plant defense on pepper (*Capsicum annuum* L.). *J Microbiol Biotechnol* 2007;17(3):96-103.
19. Shweta S, Hima Bindu J, Raghu J. Isolation of endophytic bacteria producing the anti-cancer alkaloid camptothecin from *Miquelia dentata* Bedd (Icacinaeae). *Phytomedicine* 2013;20(3):913-917.
20. Saadoun I, Challah LM, Aldhuhouri F, Hamoudi A, Joubori BA. Antagonistic effect of the exotic plant *Prosopis juliflora* extract on different bacterial pathogens. *Int J Curr Microbiol Appl Sci* 2014;3(7):865-873.
21. Sarasvati S, Sujata B, Amita Sh. Effects of fermentation on nutritional quality of *Prosopis juliflora* pods as alternative fish feed. *Res J Anim, Vet Fish Sci* 2014;2(12):1-7.
22. Khan Z, Doty SL. Characterization of bacterial endophytes of sweet potato plants. *Plant Soil* 2009;322(4):197-207.
23. Scherer R, Duarte MCT, Catharino RR, Nactigall FM, Eberlin MN, Teixeira Filho J, et al. Xanthium strumarium L. antimicrobial activity and carboxyatractyloside analysis through electrospray ionization mass spectrometry. *Rev Bras Pl Med Botucatu* 2009;2(11):159-163.
24. Hung PQ, Kumar SM, Govindsamy V, Annapurna K. Isolation and characterization of endophytic bacteria from wild and cultivated soyabean varieties. *Biol Fertil Soils* 2007;44(2):155-162.
25. Aneja KR. Experiments in microbiology, plant pathology and biotechnology. 3rd ed. Daryagang New Delhi: India; 2005. 607 p.
26. Ningthoujam DS, Sanasam S, Nimaichand S. Studies on bioactive Actinomycetes in a niche biotope, Nambul river in Manipur, India. *J Microbial Biochem Technol* 2011; S6:001.
27. Nikolic GS, Zlatkovic SA. Assaying in variation in secondary variation of St. John's wort for its better use as an antibiotic. *J Med Plants Res* 2010;4(2):211-224.
28. Moreira ZPM, Duarte EAA, Oliveira TAS, Monteiro FP, Loguercio LL, Souza JT. Host and tissue preferences of *Enterobacter cloacae* and *Bacillus amyloliquefaciens* for endophytic colonization. *Afr J Microbiol Res* 2015;9(20):1352-1356.
29. Sneath PHA. Endospore-forming Gram-positive rods and cocci. In: Sneath PHA, Mair NS, Sharpe HE, Holt JG, Murray RGE, Brenner J, et al, editors. *Bergey's manual systematic microbiology*. Baltimore: USA: Williams and Wilkins; 1986 p. 1104-1139.
30. Lee SC, Kim SH, Park IH, Chung SY, Chandra MS, Choi YL. Isolation, purification, and characterization of novel fengycin S from *Bacillus amyloliquefaciens* LSC-04 degrading crude oil. *Biotechnol Bioproc E* 2010;15(3):246-253.
31. Singh S, Moholkar VS, Goyal A. Isolation, Identification and characterization of a cellulolytic bacillus amyloliquefaciens strain SS35 from rhinoceros dung. *ISRN Microbiol* 2013;2013:728134.
32. Muzzamal H, Sarwar R, Sajid I, Hasnain Sh. Isolation, identification and screening of endophytic bacteria antagonistic to biofilm formers. *Pakistan J Zool* 2012;44(4):249-257.
33. Smibert RM, Kreig NR. Phenotypic characterization. In: Gerhardt P, Murray RGE, Wood WA, Kreig NR, editors. *Methods for general and molecular bacteriology*. Washington DC: ASM Press; 1994. p. 1200.
34. Araujo WL, Marcon J, Maccheroni WJr, van Elsas JD, van Vuurde JW, Azevedo JL. Diversity of endophytic bacterial populations and their interaction with *Xylella fastidiosa* in citrus plants. *Appl Environ Microbiol* 2002;68(10):4906-4914.
35. Vega FE, Pava-Ripoll M, Posada F, Buyer JS. Endophytic bacteria in *Coffea arabica* L. *J Basic Microbiol* 2005;45(5):371-380.
36. Surette MA, Sturz AV, Lada RR, Nowak J. Bacterial endophytes in processing carrots (*Daucus carota* L.var. sativus): their localization, population density, biodiversity and their effects on plant growth. *Plant Soil* 2003; 253(2):381- 390.
37. Rasche F, Trondl R, Nagltreiter C, Reichenauer TG, Sessitsch A. Chilling and cultivar type affect the diversity of bacterial endophytes colonizing sweet pepper (*Capsicum annum* L.). *Can J Microbiol* 2006;52(2):1036-1045.
38. Stapleton AE, Simmons SJ. Plant control of phyllosphere diversity: genotype interactions with ultraviolet- B radia-

- tion. In: Bailey MJ, Lilley AK, Timms-Wilson PTN, Spencer-Phillips PTN. *Microbial Ecology of the Aerial Plant Surface*. Wallingford, UK: CABI International; 2006.p. 223-238.
39. Ryan RP, Germaine K, Franks A, Ryan DJ, Dowling DN. Bacterial endophytes: recent developments and applications. *FEM-S Microbiol Lett* 2008;278(4):1-9.
 40. Dudeja SS, Giri R, Saini R, Suneja-Madan P, Kothe E. Interaction of endophytic microbes with legumes. *J Basic Microbiol* 2012;52(2):248-260.
 41. Haroun NE, Elamin SE, Mahgoub BM, Elssidig MA, Mohammed EH. Leaf blight: A new disease of *Xanthium strumarium* L. caused by *Curvularia lunata* and *Drechslera spicifera* in Sudan. *Int J Curr Microbiol Appl Sci* 2015;4(1):511-515.
 42. Andreote FD, Rocha NU, Araújo WL, Azevedo JL, van Overbeek LS. Effect of bacterial inoculation, plant genotype and developmental stage on root-associated and endophytic bacterial communities in potato (*Solanum tuberosum*). *Antonie Van Leeuwenhoek* 2010;97(4):389-399.
 43. Deng Y, Zhu Y, Wang P, Zhu L, Zheng J, Li R, et al. Complete genome sequence of *Bacillus subtilis* BSn5, an endophytic bacterium of *Amorphophallus konjac* with antimicrobial activity for the plant pathogen *Erwinia carotovora* subsp. *carotovora*. *J Bacteriol* 2011;193(8):2070-2071.
 44. Goryluk A, Rekosz-Burlaga H, Blaszczyk M. Isolation and characterization of bacterial endophytes of *Chelidonium majus* L. *Pol J Microbiol* 2009;58(4):355-361.
 45. Suciatiyah Y, Supriyati D, Rahmansyah M. Biodiversity of endophytic bacteria and their antagonistic activity to *rhizoctonia solani* and *fusarium oxysporium*. *Glob J Biol Agric Health Sci* 2013;2(4):111-118.
 46. Ma L, Cao YH, Cheng MH, Huang Y, Mo MH, Wang Y, et al. Phylogenetic diversity of bacterial endophytes of *Panax notoginseng* with antagonistic characteristics towards pathogens of root-rot disease complex. *Antonie Van Leeuwenhoek* 2013;103(2):299-312.
 47. Chauhan H, Bagyarj DJ, Sharma A. Plant growth-promoting bacterial endophytes from sugarcane and their potential in promoting growth of the host under field conditions. *Exp Agric* 2013;49(1):43-52.
 48. Athukorala SN, Fernando WG, Rashid KY. Identification of antifungal antibiotics of *Bacillus* species isolated from different microhabitats using polymerase chain reaction and MALDI-TOF mass spectrometry. *Can J Microbiol* 2009;55(9):1021-1032.
 49. Nair JR, Singh G, Sekar V. Isolation and characterization of a novel *Bacillus* strain from coffee phyllosphere showing antifungal activity. *J App Microbiol* 2002;93(3):772-780.
 50. Wang H, Wen K, Zhao X, Wang X, Li A, Hong H. The inhibitory activity of endophytic *Bacillus* sp. strain CH-M1 against plant pathogenic fungi and its plant growth-promoting effect. *Crop Prot* 2009;28(2):634-639.
 51. Holt JG, Krieg NR, Sneath PHA. *Bergey's manual of determinative bacteriology*. 3rd ed. Philadelphia: Williams and Wilkins Press; 1994. 787 p.