

Developmental study of rectum in broiler chicken: A stereological and morphometrical study

Rahmat-Allah Fatahian Dehkordi^{1*}, Poria Ghahremani²

¹ Department of Basic Sciences, Faculty of Veterinary Medicine, Shahrekord University, Shahrekord, Iran; ² DVM Student, Faculty of Veterinary Medicine, Shahrekord University, Shahrekord, Iran.

Article Info	Abstract
<p>Article history:</p> <p>Received: 20 April 2014 Accepted: 19 August 2014 Available online: 15 March 2016</p> <p>Key words:</p> <p>Broiler chicken Developmental period Morphometrical study Rectum</p>	<p>The objective of this study was to investigate development of the weight and the morphological development of the rectum in broiler chickens. Twenty broiler chickens (Ross 308) were used in this experiment and they were 12, 20, 35 and 44 days of age. Samples from the rectum of chicks were sectioned in an unbiased manner and examined quantitatively using stereology. In addition, the weight of both body (BW) and rectum and also rectum weight as a proportion of BW, height and width of the villi and thickness of rectum wall were measured. The results revealed that the body and rectum weight were increased with age. The greatest rectum weight as a proportion of BW was observed on day 20. An increase in height and width of the villi during the study period were obtained. The increase was more significant on days 35 and 44 than on days 12 and 20 ($p < 0.05$). There were significant difference in thickness of tunica mucosa, submucosa and muscular layer of the rectum on day 20 compared to day 35 ($p < 0.05$). The increase in the volume density of the wall, tunica mucosa and tunica muscular was greater on day 20 than on day 35. However, significant differences were observed in volume density of this layers between days 35 and 44 compared to days 12 and 20 ($p < 0.05$).</p> <p>© 2015 Urmia University. All rights reserved.</p>

مطالعه تکامل رکتوم در جوجه های گوشتی: یک مطالعه ای استریولوژیک و مورفومتریک

چکیده

هدف مطالعه حاضر بررسی روند تکامل وزن و تکامل مورفولوژی رکتوم در جوجه های گوشتی بود. ۲۰ جوجه ای گوشتی (راس ۳۰۸)، با سنین ۱۲، ۲۰، ۳۵ و ۴۴ روزگی در این آزمایش مورد استفاده قرار گرفتند. نمونه های رکتوم در یک روش صحیح برش گیری شده و با استفاده از روش کمی استریولوژی مورد بررسی قرار گرفتند. علاوه بر این، وزن بدن، وزن رکتوم، نسبت وزن رکتوم به وزن بدن، ارتفاع و پهنای پرزها و ضخامت دیواره ای رکتوم اندازه گیری شد. نتایج نشان داد که وزن بدن و وزن رکتوم با سن افزایش یافته است؛ بیشترین نسبت وزن رکتوم به وزن بدن در ۲۰ روزگی مشاهده شد. ارتفاع و پهنای پرزها در طول دوره افزایش نشان داد. این افزایش در روزهای ۳۵ و ۴۴ نسبت به روزهای ۱۲ و ۲۰ معنی دار بود ($p < 0.05$). ضخامت لایه های مخاط، زیر مخاط و عضلات رکتوم اختلاف معنی داری را در روز ۲۰ نسبت به روز ۳۵ نشان داد ($p < 0.05$). حجم دیواره، حجم لایه ای مخاطی غشاء و عضلاتی در روز ۲۰ بیشتر از روز ۳۵ بود. با این حال اختلاف معنی داری بین روزهای ۳۵ و ۴۴ نسبت به روزهای ۱۲ و ۲۰ در حجم این لایه ها مشاهده شد ($p < 0.05$).

واژه های کلیدی: جوجه ای گوشتی، دوره تکامل، رکتوم، مطالعه مورفومتریک

*Correspondence:

Rahmat-Allah Fatahian Dehkordi. DVM, PhD
Department of Basic Sciences, Faculty of Veterinary Medicine, Shahrekord University, Shahrekord, Iran.
E-mail: fatahian_1349@yahoo.com

Introduction

It has been detected that the microscopic structure of the avian large intestine tract is affected by diet. Some studies have shown that the overall size of the gut and luminal surface area in some birds varies in relation to diet.¹⁻³ A larger volume or surface area of the intestine presumably allows increasing further input in nutrients, which these foodstuffs can be digested and/or absorbed.⁴ Generally, the diluted diet causes amplification of the surface area due to villi.⁵⁻⁹ Goldstein *et al.* showed that villus of large intestine is altered with diet in wild birds.¹⁰

In birds, the size and dimension of the digestive tract and consequently the digestion may be minimized.¹¹⁻¹³ Therefore, intestinal luminal morphology is a basal function that is related to gut volume and may be reduced in Volant species.⁴

At the time of hatching, the development stage of the digestive tract, especially intestines determine the chicks' capability to consume feed.² The colon was characterized by short luminal villi and goblet cells dispersed in the epithelium.¹⁴ In between and within species, large intestine includes a great morphometrical and functional variability. For instance, many familiar avian species, such as chickens and ducks, have individual large intestine, which aid in the digestion of nutrition and in water balance.^{15,16} The influx of water into large intestine can be reabsorbed through the epithelium of the large intestine tract to maintain hydration.¹⁷⁻¹⁹ This study was designed to understand the morphometrical and quantitative changes of rectum of the Ross broiler chickens with aging.

Materials and Methods

Tissue processing. Twenty broiler chickens (Ross 308 breed) from the same batch were used in this study. Experiment was carried out in Shahrekord University, Iran. Chickens access to water and a standard ration was *ad libitum* (Starter: 32 MJ metabolizable energy (ME) per kg of diet, 230 g kg⁻¹ crude protein (CP), Grower: 32 MJ metabolizable energy (ME) per kg of diet, 200 g kg⁻¹ CP formulated to meet requirements for broilers.²⁰

The birds were divided into four groups (n = 5): 12, 20, 35 and 44 day. The birds were immediately transported to laboratory for intestinal tissue processing. Body weight was obtained by a digital balance with accuracy 10⁻³. Birds were sacrificed by an overdose (65 mg mL⁻¹) intra-peritoneal injection of sodium pentobarbital. The abdominal cavity was exposed and the lumen of the intestinal tracts was flushed using normal saline solution and intestines were removed. The rectum was cut and its fresh weight was calculated. The proximal, middle and distal segments of the rectum were dissected. Samples were fixed by immersion in buffered formalin fixative solution for 48 hr and then, samples were dehydrated and

embedded in the paraffin. Paraffin-embedded blocks were cut at 5 μm thickness by microtome and in an unbiased style at 20 equally spaced intervals through the wax blocks. The tissue sections were dewaxed and were stained with Hematoxylin and Eosin (H&E) and were then studied under light microscope (Nikon, Düsseldorf, Germany). Photographs were taken using a camera attached to microscope with maximum resolution. The villus height was measured from the top of the villus to the top of the lamina propria.

Stereological analysis. Cavalieri's Principle was used to estimate volume densities (V_v) of the rectum by point counting under light microscopy.²¹ For point counting, intersections between an eyepiece test grid and light micrographs were obtained. The number of intersections on the grid overlying the tissue component of the mucosa, submucosa, muscularis tunicae and also intestinal wall was counted for each sample. The ratio of points to the total number of the grid point was considered to be the volume density of each component, as in the following equation:

$$V_v = \frac{P_n}{P_t}$$

where, V_v is the volume density of the tissue component, P_n is the number of intersections on the grid overlying the tissue component and P_t is the total number of points on the test grid.

The absolute volume of each component was calculated by the following formula:

$$V = T \times \frac{a}{p} \times \sum_{i=1}^m p_i$$

where, T is thickness of each slice, a/p is the area associated with each point of the test grid and p_i is the number of points landing within each tracing.²²

The surface areas (SA) of components were estimated using the following formula:²³

$$SA = \frac{V_v}{d} \times 4 \times V$$

where, V_v is the volume of the measured component by the Cavalieri Principle, V is absolute volume, d is the mean diameter of the component measured, (d : if a component was cut crossly, the short axis of its profile was measured). Data obtained were analyzed using the SPSS (Version 11.5; SPSS Inc., Chicago, USA). The statistical analysis was carried out by one-way ANOVA in level $p < 0.05$. All results are represented as mean \pm SEM.

Results

Body weights and rectum weights are presented in Table 1 showing the expected increase from 12 to 44 days post hatching ($p < 0.05$). There was significant increase in BW from 520.4 \pm 38.0 g on day 12 to 2363.3 \pm 201.0 g on day 44. The body weight gains were greater on days 35 to 44 than on days 12 to 20 ($p < 0.05$). Total rectum weights

Table 1. Body weights and colon morphometrics of chickens, fresh tissue basis.

Parameter	Age (Day)			
	12	20	35	44
Body weight (g)	520.40 ± 38.00	742.70 ± 98.00	2014.60 ± 132.00	2363.30 ± 201.00
Colon weight (g)	2.04 ± 0.12	3.02 ± 0.24	4.15 ± 0.46	5.41 ± 0.35
Colon weight/Body weight ratio	38.60 (×10 ⁻⁴)	40.60 (×10 ⁻⁴)	20.60 (×10 ⁻⁴)	22.80 (×10 ⁻⁴)

was increased more rapidly on 35 to 44 days than on 12 to 20 days, the slowest value of rectum growth was observed on 12 to 20 days. However, the weight of rectum was increased and reached its highest value on day 44. The rectum weight as a proportion of BW was greatest on day 20 for the age groups studied ($p < 0.05$).

Results obtained from micrometric analysis of tunica mucosa, tunica submucosa and tunica muscularis of the rectum revealed a small increase in thickness between days 12 to 20 and also between days 35 to 44, however, a larger increase was observed between day 20 when compared to day 35 ($p < 0.05$), (Fig. 1). The villi height and width in rectum were increased with age, however, these changes were significant on days 35 and 44 than on days 12 and 20 ($p < 0.05$), (Fig. 1).

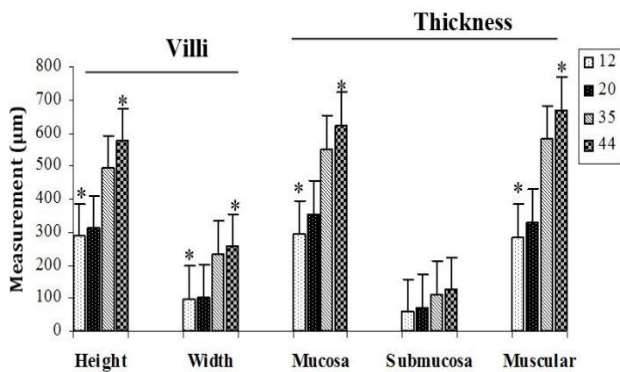


Fig. 1. Micrometric analysis of villi height and width and thickness of the rectum different layers in chickens in age groups 12 to 44 days.

* indicates significant difference among different days ($p < 0.05$).

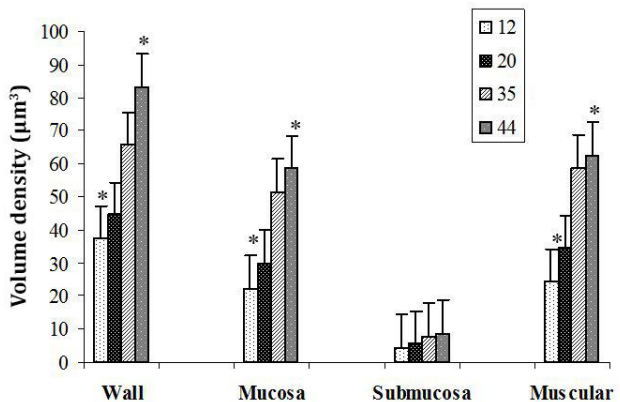


Fig. 2. The volume density of the different layers of the rectum wall in chickens, in age groups 12 to 44 days.

* indicates significant difference among different days ($p < 0.05$).

The obtained results showed that volume density of various layers of rectum (Figs. 2 and 3), such as tunica mucosa, submucosa and muscular, gradually were increased in all age groups, however, this increase only was significant on days 35 and 44 than on days 12 and 20 ($p < 0.05$).

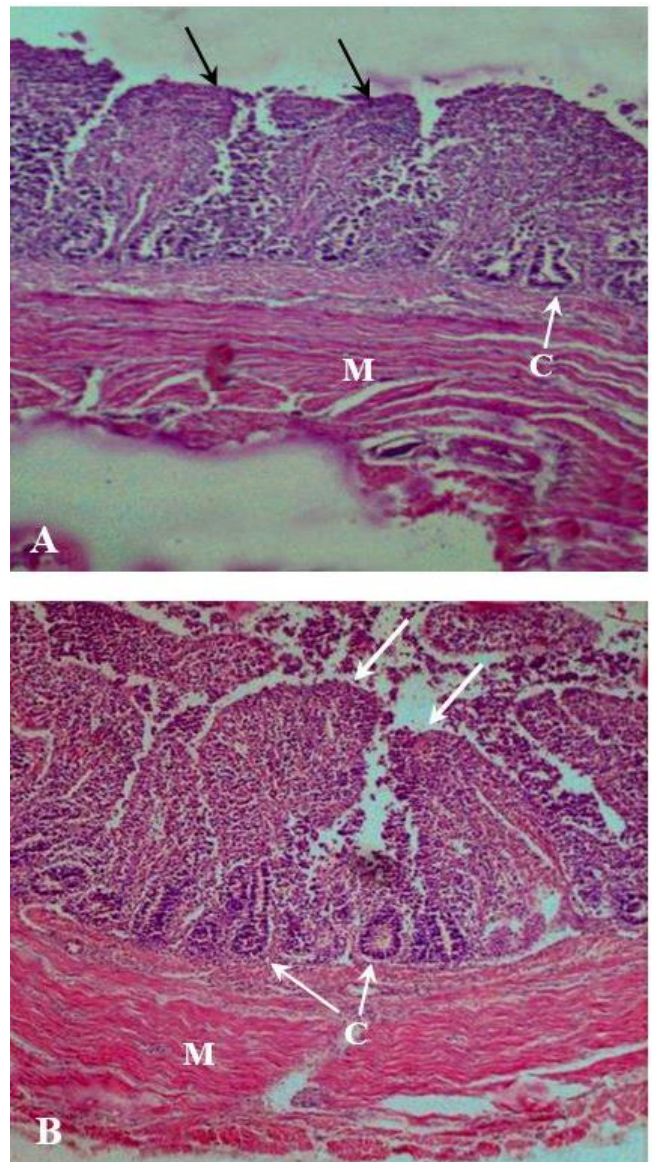


Fig. 3. Photomicrographs of colon on 20 day (A) and 35 day (B) broiler chicken. These micrographs reveal the changes of villi on 20 day (black arrows) and 35 day (white arrows) broiler chickens rectum samples. Note the number of numerous villi and crypt (C) on 35 day and the 20 day in chicks; Muscular layer (M); (H & E, 200×).

Discussion

Development of the intestinal tracts starts early in fetal life and quickly develop after birth and within this time a significant stride occur in the ontogeny of the intestinal tract in preparation of the neonate to encounter with nutrients.²⁴ Our study revealed that as chicks grew, increase in weights of the both body and rectum occurred. The size of digestive organs of birds was significantly affected by the amount and type of food taken by these birds.^{25,26} In a study by Jackson the intestinal dimensions showed positive relationship with body mass in 13 sea bird species investigated.²⁷ In the present study, excluding one exception, the chicks' intestinal (rectum) weight was in reverse proportion (negative relation) to its BW. Reversed proportion was observed from day 20 to day 44 post hatching. In contrast, Barnes and Thomas on 18 species of ducks of the genus *Anatidae* reported a positive association between intestinal weights to the BW.²⁸

In the present study, the thickness in tunica mucosa, tunica submucosa and tunica muscular of the rectum was increased with the age of the birds, from days 12 to 44. Also, the present results showed that thickness of the tunica mucosa and tunica submucosa on days 12 and 20 was slightly larger than the tunica muscularis in the same age group. There are a dense framework of fine collagen fibers within intestinal lamina propria which can affect this layer,²⁹ therefore, it seems that the further increase of the tunica mucosa and tunica submucosa thickness than tunica muscularis at age groups of 12 and 20 days might be due to the more noticeable effect of this layer in intestine.

Design-based stereological methods permit efficient quantification of cells without bias from cell size, shape, orientation, or distribution. These quantitative advantages of the stereological procedures have been reported in some papers.^{30,31} In the present study, the villi height and width in rectum were increased with age and these results were similar to those of previous studies.³² Increase in villi height and width is matched by absorption function of the intestine, increase in digestion due to increase of absorptive surface area, expression of brush border enzymes and nutrient transport systems.^{33,34} Sklan, showed that the intestinal villi increase significantly in diameter and length during the first 7 to 10 days after hatching.³⁵

The present study indicated that mean volume density of rectum wall was larger significantly in two age group 35 and 44 days compared to days 12 and 20. In goslings, it has been shown that volume density of intestinal villus wall was increased greatly from 4 to 21 post hatching.³⁴ In two diet with low salt and high salt, Mayhew *et al.* reported a higher volume density in the part of the rectum wall (coprodeum wall) of hens that fed on a low salt diet compared to a high salt diet.³⁶ However, There were differences in in morphometrical parameters of rectum samples. Values on day 44 were greatest than other age groups. The further

transformation of rectum wall in broiler chicken was observed on day 20.

Acknowledgments

This study was supported by Department of Basic Sciences in University of Shahrekord, Shahrekord, Iran.

References

1. Karasov WH. Digestion in birds: Chemical and physiological determinants and ecological implications. *Stud Avian Biol* 1990; 13: 1-4.
2. Richardson K, Wooller R. Adaptations of the alimentary tracts of some Australian lorikeets to a diet of pollen and nectar. *Aust J Zool* 1990; 38: 581-586.
3. Ricklefs R. Morphometry of the digestive tracts of some passerine birds. *Condor* 1996; 279-292.
4. Lavin SR, Karasov WH, Ives AR, et al. Morphometrics of the avian small intestine compared with that of nonflying mammals: A phylogenetic approach. *Physiol Biochem Zool* 2008; 81: 526-550.
5. Clauss W, Dantzer V, Skadhauge E. Aldosterone modulates electrogenic Cl secretion in the colon of the hen (*Gallus domesticus*). *Am J Physiol Regul Integr Comp Physiol* 1991; 261: 1533-1541.
6. Dantzer V, Moller O, Skadhauge E. Morphological and enzymic adaptation to aldosterone of the epithelium of the caudal hindgut of the hen. *J Physiol* 1988; 396: 30.
7. Bruggen KE. Anatomical adaptation of the gut to diet in red-winged blackbirds (*Agelaius phoeniceus*). *Auk* 1991; 562-567.
8. Elbrond VS, Dantzer V, Mayhew T, et al. Avian lower intestine adapts to dietary salt (NaCl) depletion by increasing transepithelial sodium transport and microvillous membrane surface area. *Exp Physiol* 1991; 76: 733-744.
9. Ciccotti BE, Macchi E, Rossi A, et al. Glass eel (*Anguilla anguilla*) acclimation to fresh water and sea water: Morphological changes of the digestive tract. *J Appl Ichthyol* 1993; 9: 74-81.
10. Goldstein DL, Williams JB, Braun EJ. Osmoregulation in the field by salt-marsh Savannah sparrows *Passerculus sandwichensis beldingi*. *Physiol Zool* 1990; 669-682.
11. Guillemette M. Digestive-rate constraint in wintering common eiders (*Somateria mollissima*): Implications for flying capabilities. *Auk* 1995; 111: 900-909.
12. Norberg U. How a long tail and changes in mass and wing shape affect the cost for flight in animals. *Funct Ecol* 1995; 9: 48-54.
13. Nudds RL, Bryant DM. Consequences of load carrying by birds during short flights are found to be behavioral and not energetic. *Am J Physiol Regul Integr Comp Physiol* 2002; 283: R249-R256.
14. Hansen CF, Vrang N, Sangild PT, et al. Novel insight into

- the distribution of L-cells in the rat intestinal tract. *Am J Transl Res* 2013; 5: 347.
15. Clench MH, Mathias JR. The avian cecum: A review. *Wilson Bull* 1995; 93-121.
 16. Kehoe FP, Ankney CD. Variation in digestive organ size among five species of diving ducks (*Aythya* spp.). *Can J Zool* 1985; 63: 2339-2342.
 17. Thomas D, Skadhauge E. Regulation of electrolyte transport in the lower intestine of birds. In: Case RM (Eds). *Electrolyte and water transport across gastrointestinal epithelia*. New York, USA: Raven Press 1982; 295-303.
 18. Thomas DH. Salt and water excretion by birds: The lower intestine as an integrator of renal and intestinal excretion. *Comp Biochem Physiol A Mol Integr Physiol* 1982; 71: 527-535.
 19. Thomas DH, Skadhauge E. Function and regulation of the avian caecal bulb: Influence of dietary NaCl and aldosterone on water and electrolyte fluxes in the hen (*Gallus domesticus*) perfused in vivo. *J Comp Physiol B Biochem Syst Environ Physiol* 1989; 159: 51-60.
 20. NRC. *Nutrient Requirements of Poultry*. Washington DC, USA: National Academy of Science Press 1994:19.
 21. Gundersen HJG, Bendtsen TF, Korbo L, et al. Some new, simple and efficient stereological methods and their use in pathological research and diagnosis. *Acta Pathol Microbiol Immunol Scand* 2009; 96: 379-394.
 22. Howard CV, Reed M. *Unbiased stereology: Three-dimensional measurement in microscopy*. 1st ed. Oxford, UK: Bios Scientific Publishers 1998: 39-106.
 23. Jorgen H, Gundersen G. Estimation of tubule or cylinder LV, SV and VV on thick sections. *J Microsc* 2011; 117: 333-345.
 24. Cranwell P. Development of the neonatal gut and enzyme systems. In: Varley MA (Eds). *The neonatal pig: Development and survival*. Wallingford, UK; CAB International 1995; 99-145.
 25. Paulus SL. Gut morphology of gadwalls in Louisiana in winter. *J Wildl Manag* 1982; 46: 483-490.
 26. Drobney RD. Effect of diet on visceral morphology of breeding wood ducks. *Auk* 1984; 93-98.
 27. Jackson S. Do sea bird gut sizes and mean retention times reflect adaptation to diet and foraging method? *Physiol Zool* 1992; 65: 674-697.
 28. Barnes GG, Thomas VG. Digestive organ morphology, diet, and guild structure of North American Anatidae. *Can J Zool* 1987; 65: 1812-1817.
 29. Dellmann HD, Eurell J. *Textbook of veterinary histology*. 5th ed. Baltimore, USA: Lippincott Williams and Wilkins 1998; 177-178.
 30. Cruz-Orive LM, Hunziker EB. Stereology for anisotropic cells: Application to growth cartilage. *J Microsc* 2011; 143: 47-80.
 31. Mayhew TM, Dantzer V, Elbrond VS, et al. A sampling scheme intended for tandem measurements of sodium transport and microvillous surface area in the coprodaeal epithelium of hens on high-and low-salt diets. *J Anat* 1990; 173: 19.
 32. Mobini B. Age-dependent morphometric changes of different parts of small and large intestines in the Ross broilers. *Int J Agro Vet Med Sci* 2011; 5: 456-463.
 33. Noy Y, Geyra A, Sklan D. The effect of early feeding on growth and small intestinal development in the post-hatch poult. *Poult Sci* 2001; 80: 912-919.
 34. Liu B, Wang Z, Yang H, et al. Developmental morphology of the small intestine in Yangzhou goslings. *Afr J Biotechnol* 2010; 9: 7392-7400.
 35. Sklan D. Development of the digestive tract of poultry. *Worlds Poult Sci J* 2001; 57: 415-428.
 36. Mayhew TM, Elbrond VS, Dantzer V, et al. Quantitative analysis of factors contributing to expansion of microvillous surface area in the coprodaeum of hens transferred to a low NaCl diet. *J Anat* 1992; 181: 73.