

CORRECTION

# Correction: A Novel Form of Progressive Retinal Atrophy in Swedish Vallhund Dogs

The *PLOS ONE* Staff

There is an error in the pedigree squares for the affected dogs in Figure 5. Please view the correct Figure 5 here.

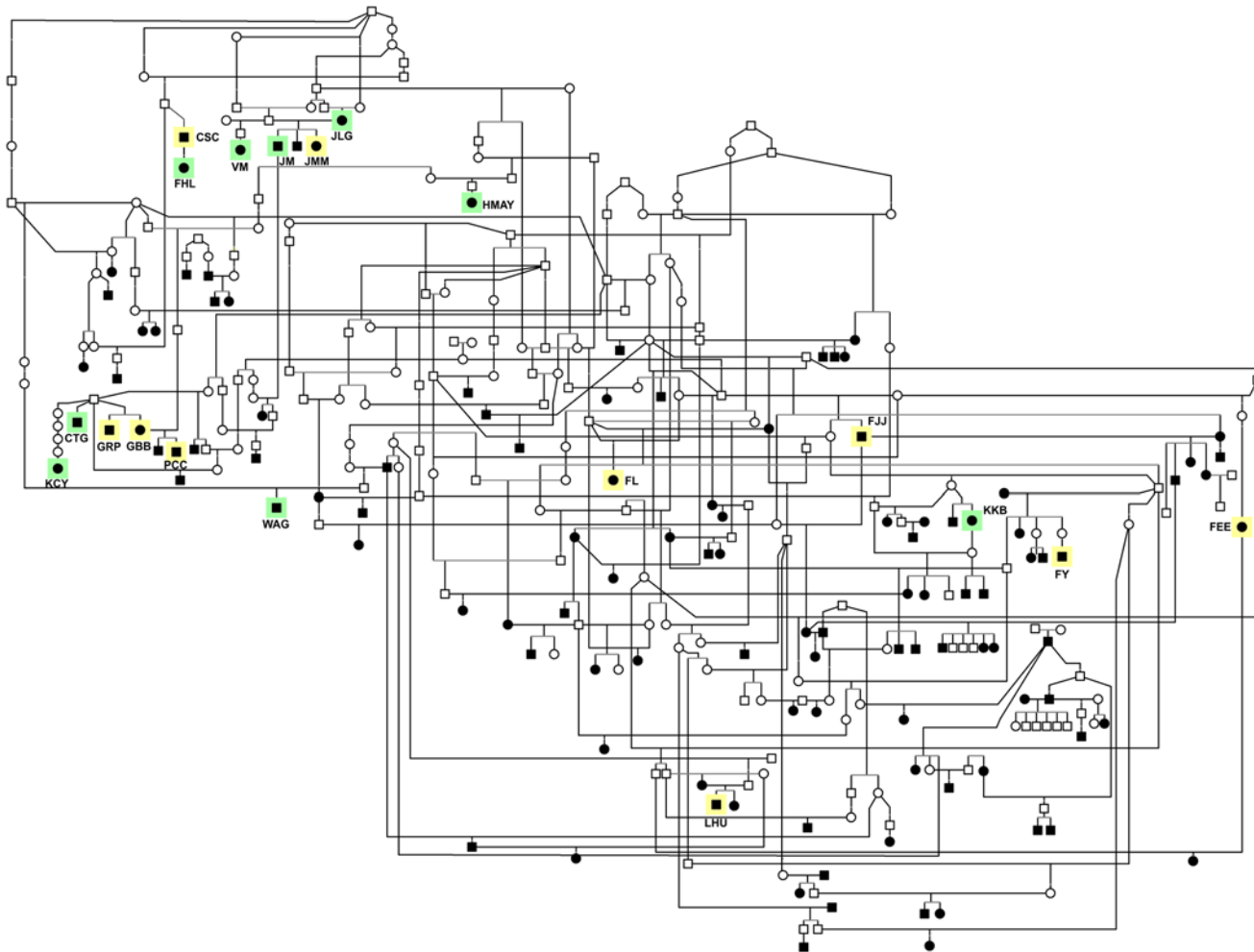


 OPEN ACCESS

**Citation:** The *PLOS ONE* Staff (2015) Correction: A Novel Form of Progressive Retinal Atrophy in Swedish Vallhund Dogs. *PLoS ONE* 10(2): e0118128. doi:10.1371/journal.pone.0118128

**Published:** February 10, 2015

**Copyright:** © 2015 The PLOS ONE Staff. This is an open access article distributed under the terms of the [Creative Commons Attribution License](https://creativecommons.org/licenses/by/4.0/), which permits unrestricted use, distribution, and reproduction in any medium, provided the original author and source are credited.



**Figure 5. Large Swedish vallhund pedigree.** This pedigree is composed of nearly 300 dogs, including 125 animals affected with the breed-specific retinopathy. Affected dogs listed in Tables 1 and 2 are highlighted in yellow and green, respectively. Squares, males; circles, females; white symbols, unaffected; black symbols, retinopathy affected.

doi:10.1371/journal.pone.0118128.g001

## Reference

1. Cooper AE, Ahonen S, Rowlan JS, Duncan A, Seppälä EH, et al. (2014) A Novel Form of Progressive Retinal Atrophy in Swedish Vallhund Dogs. *PLoS ONE* 9(9): e106610. doi: [10.1371/journal.pone.0106610](https://doi.org/10.1371/journal.pone.0106610) PMID: [25198798](https://pubmed.ncbi.nlm.nih.gov/25198798/)