

Navin Mishra, MD  
Peixiang Wang, PhD  
Danielle Goldsmith, BSc  
Xiaochu Zhao, BSc  
Yunlin Xue, BSc  
Uwe Christians, MD,  
PhD  
Berge A. Minassian, MD

*Neurol Genet*  
2017;3:e127; doi: 10.1212/  
NXG.000000000000127

## EVEROLIMUS DOES NOT PREVENT LAFORA BODY FORMATION IN MURINE LAFORA DISEASE

### OPEN

Healthy teenagers until the onset of Lafora disease (LD), patients may experience decade-long progressive and soon-intractable myoclonus, epilepsy, psychosis and dementia culminating in a vegetative state, and death in status epilepticus. The causative defects are loss-of-function mutations in the genes encoding the interacting enzymes laforin (EPM2A glycogen phosphatase) and malin (EPM2B ubiquitin E3 ligase). Through yet unclear mechanisms, loss of the laforin-malin function results in malstructured glycogen that aggregates and accumulates into Lafora bodies (LB), which induce both a defect in autophagy (which might otherwise possibly clear LB) and neuronal death.<sup>1,2</sup> Of major therapeutic importance, in LD mouse models reducing glycogen synthesis (through knockout of muscle/brain glycogen synthase [Gys1] or its activator protein PTG), even by only 50%, clears LB, restores autophagy, and rescues the LD neurologic phenotype.<sup>2,3</sup>

The mechanistic target of rapamycin (mTOR) is a homeostatic hub that promotes anabolism (including protein synthesis, cell growth, and proliferation) and downregulates autophagy. Rapamycin (sirolimus) and its analogs (e.g., everolimus) inhibit mTOR.<sup>4</sup> Recently, it was reported that rapamycin also downregulates glycogen synthesis in mouse models.<sup>5</sup> Dual glycogen synthesis reduction and autophagy enhancement (through mTOR inhibition) suggest this class of drugs as a perfect potential fit for an LD therapy. We tested whether everolimus would be therapeutic in the *Epm2a*<sup>-/-</sup> LD mouse model. We chose everolimus because it possesses improved pharmacokinetic, pharmacodynamic, and blood-brain barrier-crossing properties over sirolimus, is in clinical use in neurology (tuberous sclerosis), and is in clinical trials as a potential general antiepileptic drug.

In the LD mice, LB are not yet present at 1 month of age and are abundant by 3 months. We administered everolimus (30 mg/kg), or vehicle, to *Epm2a*<sup>-/-</sup> mice by gavage once daily from age 1 to 3 months. This achieved very high levels at 3 months, both in the periphery (309 ± 118 ng/mL in blood 24 hours after the last dose and 122 ± 20.6 ng/g in the muscle) and in the brain (186 ± 50.9 ng/g) (mean ± SD; e-Methods

at [Neurology.org/ng](http://Neurology.org/ng)). There was, however, no difference between treated and untreated mice in LB (in the muscle or brain), glycogen content, Gys1 activity, or markers of autophagy (LC3 and p62) (figure).

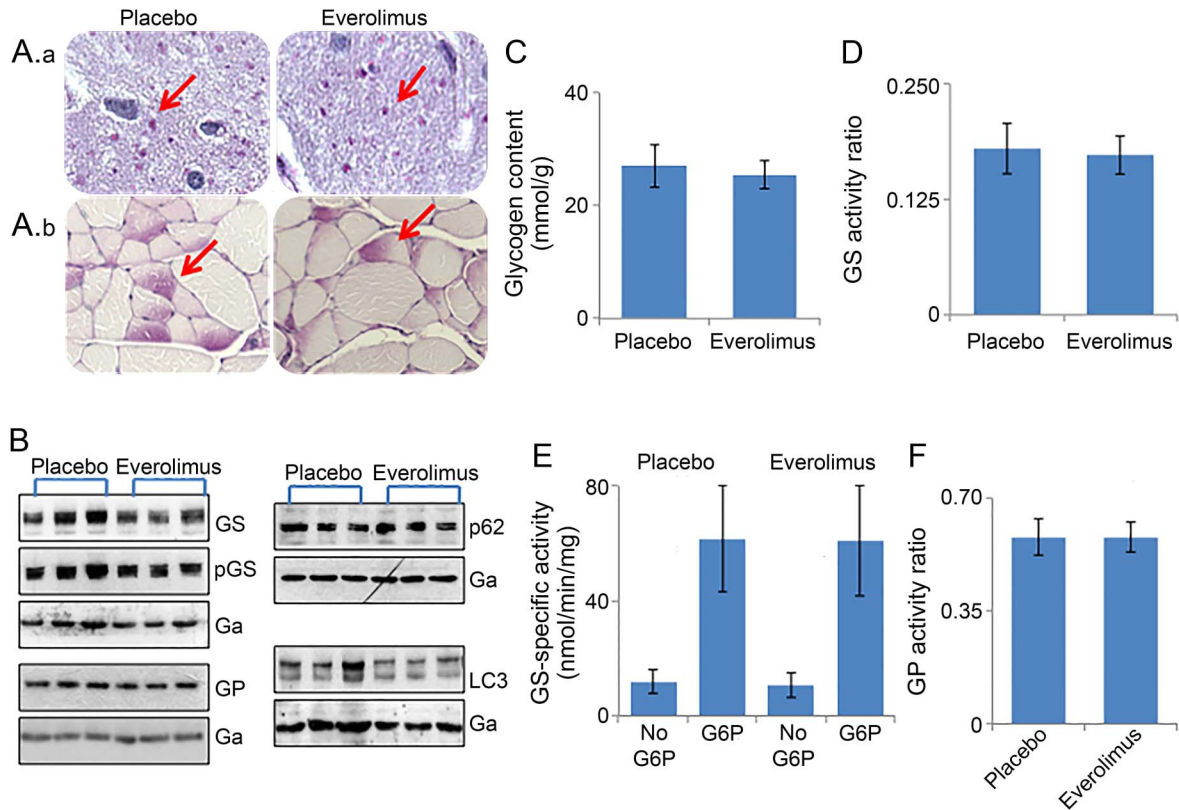
Everolimus does not appear to be a potential therapy for LD. We did not study the LD behavioral phenotype, which occurs much later (~12 months) when LB are profuse, but this phenotype is predicted by and inextricably linked to LB and glycogen accumulation,<sup>2,3</sup> neither of which was reduced in our study. It is important that we confirmed that the dosage used achieved supramaximal everolimus exposure, with trough levels in the blood, muscle, and brain higher by 2-, 5-, and 30-fold, respectively, vs those reached by the fully immunosuppressive/antiproliferative dose of 5 mg/kg in mice.<sup>6</sup> These levels were also 20–60-fold higher than immunosuppressive levels in transplant patients.

Everolimus did not have the effect on Gys1 activity reported for sirolimus. Why the 2 analogs might differ in their effects on this enzyme is unclear. The inhibitory effect of sirolimus on glycogen synthesis is surprising because mTOR increases overall cellular energy (adenosine triphosphate),<sup>4</sup> consistent with which both sirolimus and everolimus reduce glycolysis,<sup>7</sup> which should increase, not decrease, glycogen synthesis. Confirmation of the sirolimus effect on glycogen synthesis in new experiments, perhaps in LD mice, appears warranted. Certainly, lack of effect of everolimus on Gys1 and glycogen synthesis explains the lack of effect on LB, as the latter have only ever been possible to reduce through downregulation of glycogen synthesis.<sup>2,3</sup> Surprisingly, everolimus also did not affect autophagy (at least as assessed through the LC3 and p62 markers), suggesting that its effect on mTOR might be more restricted (to the anabolic arm of mTOR) than that of sirolimus. Everolimus and sirolimus have previously been shown to have certain different effects in the brain, e.g., again surprisingly, everolimus, but not sirolimus, increases mitochondrial energy generation, while both, as mentioned, decrease glycolysis.<sup>7</sup> Might the 2 compounds have sufficient differences for sirolimus to work in LB prevention where everolimus failed?

LD is arguably the severest epilepsy of adolescence. Opportunely, mere 50% glycogen synthesis downregulation rescues the disease in mouse models,<sup>2,3</sup> and

Supplemental data at  
[Neurology.org/ng](http://Neurology.org/ng)

**Figure** Lafora bodies, glycogen content, glycogen-metabolizing enzyme activities, and autophagy markers are unaltered in 3-month-old laforin-deficient mice treated with everolimus from age 1 month



(A) Representative brain cortical (A.a) and skeletal muscle (A.b) sections stained with periodic acid-Schiff-diastrase for detection of Lafora bodies (arrows). (B) Western blots on skeletal muscle extracts with antibodies against glycogen synthase (GS), phosphorylated GS (pGS), and glycogen phosphorylase (GP), and autophagy markers p62 and LC3. Glyceraldehyde 3-phosphate dehydrogenase (Ga) is the loading control for each blot. (C) Skeletal muscle glycogen content in millimoles per gram of tissue. (D) GS activity ratio, i.e., GS activity with no added G6P (G6P is the potent allosteric activator of GS) divided by GS activity with 7.2 mM G6P (the latter resulting in maximal activation of GS). This ratio conveys how much of total potential existing GS activity in the tissue is actually active, i.e., the enzyme's activation state (ratio). (E) Components of the above ratio (i.e., separate activities with no G6P or with 7.2 mM G6P) in nanomoles per minute per milligram of protein. (F) GP (a glycogen-degrading enzyme) activity ratio ( $\pm 3$  mM of the GP allosteric activator adenosine monophosphate). n = 6 for all experiments (e-Methods).

this extent of reduction would be wholly safe in humans as evidenced by normal health in heterozygous parents of patients with glycogen storage disease type 0 (patients lacking glycogen synthase). Search is actively under way for inhibitors of glycogen synthase as a therapy for LD. Our results suggest that these do not include everolimus and do not support the off-label use of everolimus in LD. Repeat of a study such as ours with sirolimus remains worthwhile.

From the Department of Paediatrics (Neurology) (N.M., B.A.M.) and Program in Genetics and Genome Biology (P.W., D.G., X.Z., Y.X., B.A.M.), The Hospital for Sick Children and University of Toronto, Canada; and iC42 Clinical Research and Development (U.C.), Department of Anesthesiology, University of Colorado, Denver.

Author contributions: Dr. Mishra and Dr. Wang: study concept and design, acquisition of data, and analysis and interpretation. Ms. Goldsmith: acquisition of data. Ms. Zhao, Ms. Xue, and Dr. Christians: acquisition of data and analysis and interpretation. Dr. Minassian: study concept and design analysis and interpretation, critical revision of the manuscript for important intellectual content, and study supervision.

Study funding: The authors received a microgrant from the Rare Disease Foundation, Canada, for the study. This work was supported by Genome Canada, the Ontario Brain Institute, the National Institute of Neurological Disorders and Stroke of the NIH under award number P01 NS097197, and families and friends of patients with Lafora disease. Everolimus was provided by Novartis Pharmaceuticals.

Disclosure: Dr. Mishra, Dr. Wang, Ms. Goldsmith, Ms. Zhao, and Ms. Xue report no disclosures. Dr. Christians has served on the editorial board of Therapeutic Drug Monitoring and receives research support from Novartis Pharmaceuticals. Dr. Minassian holds the University of Toronto Michael Baben Chair in Epilepsy research; holds patents (and receives license fee and royalty payments) for diagnostic testing of the following genes: EPM2A, EPM2B, MECP2, VMA21; and receives funding from NIH, Genome Canada, and the Ontario Brain Institute. Go to Neurology.org/ng for full disclosure forms. The Article Processing Charge was paid by the authors.

This is an open access article distributed under the terms of the Creative Commons Attribution-NonCommercial-NoDerivatives License 4.0 (CC BY-NC-ND), which permits downloading and sharing the work provided it is properly cited. The work cannot be changed in any way or used commercially without permission from the journal.

Received October 24, 2016. Accepted in final form December 7, 2016.

Correspondence to Dr. Minassian: [berge.minassian@sickkids.ca](mailto:berge.minassian@sickkids.ca)

1. Aguado C, Sarkar S, Korolchuk VI, et al. Laforin, the most common protein mutated in Lafora disease, regulates autophagy. *Hum Mol Gen* 2010;19:2867–2876.
2. Duran J, Gruart A, Garcia-Rocha M, Delgado-García JM, Guinovart JJ. Glycogen accumulation underlies neurodegeneration and autophagy impairment in Lafora disease. *Hum Mol Gen* 2014;23:3147–3156.
3. Turnbull J, DePaoli-Roach AA, Zhao X, et al. PTG depletion removes Lafora bodies and rescues the fatal epilepsy of Lafora disease. *PLoS Genet* 2011;7:e1002037.
4. Laplante M, Sabatini DM. mTOR signaling in growth control and disease. *Cell* 2012;149:274–293.
5. Ashe KM, Taylor KM, Chu Q, et al. Inhibition of glycogen biosynthesis via mTORC1 suppression as an adjunct therapy for Pompe disease. *Mol Gen Metab* 2010;100:309–315.
6. O'Reilly T, McSheehy PM, Kawai R, et al. Comparative pharmacokinetics of RAD001 (everolimus) in normal and tumor-bearing rodents. *Cancer Chemother Pharmacol* 2010;65:625–639.
7. Christians U, Gottschalk S, Miljus J, et al. Alterations in glucose metabolism by cyclosporine in rat brain slices link to oxidative stress: interactions with mTOR inhibitors. *Br J Pharmacol* 2004;143:388–396.