

J Epidemiol 29 (5) (2019) 197–204

## Cholangiocarcinoma Trends, Incidence, and Relative Survival in Khon Kaen, Thailand From 1989 Through 2013: A Population-Based Cancer Registry Study

Supot Kamsa-ard<sup>1,2</sup>, Vor Luvira<sup>2,3</sup>, Krittika Suwanrungruang<sup>2,4</sup>, Siriporn Kamsa-ard<sup>1,2</sup>, Varisara Luvira<sup>5</sup>, Chalongpon Santong<sup>4</sup>, Tharatip Srisuk<sup>3</sup>, Ake Pugkhem<sup>3</sup>, Vajarabhongsa Bhudhisawasdi<sup>3</sup>, and Chawalit Pairojkul<sup>6</sup>

<sup>1</sup>Department of Epidemiology and Biostatistics, Faculty of Public Health, Khon Kaen University, Khon Kaen, Thailand

<sup>2</sup>ASEAN Cancer Epidemiology and Prevention Research Group, Khon Kaen University, Khon Kaen, Thailand

<sup>3</sup>Department of Surgery, Faculty of Medicine, Khon Kaen University, Khon Kaen, Thailand

<sup>4</sup>Cancer Unit, Srinagarind Hospital, Faculty of Medicine, Khon Kaen University, Khon Kaen, Thailand

<sup>5</sup>Department of Community Medicine, Faculty of Medicine, Khon Kaen University, Khon Kaen, Thailand

<sup>6</sup>Department of Pathology, Faculty of Medicine, Khon Kaen University, Khon Kaen, Thailand

Received October 8, 2019; accepted November 4, 2019; released online February 5, 2020

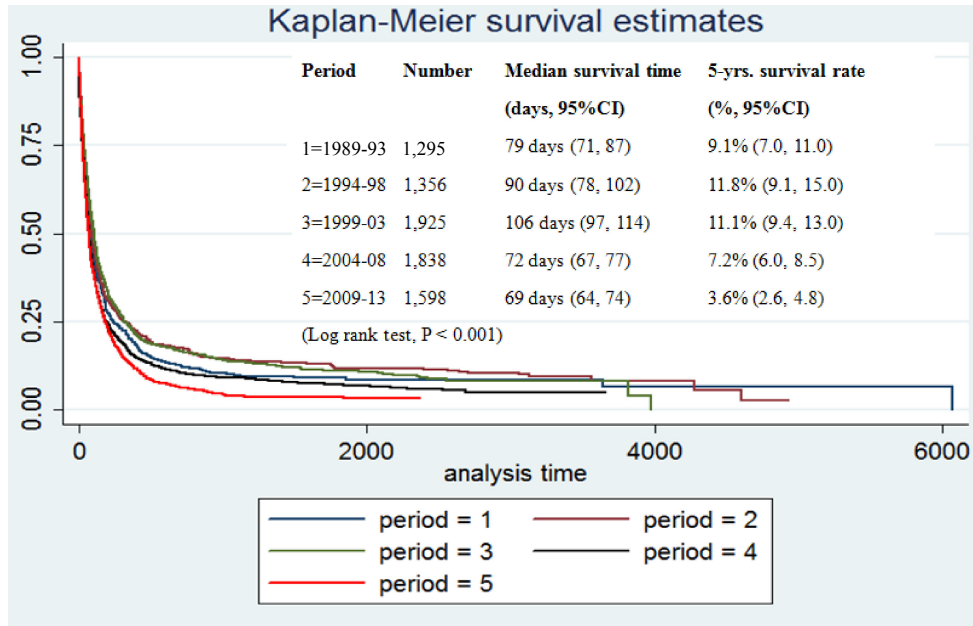
Copyright © 2020 Supot Kamsa-ard et al. This is an open access article distributed under the terms of Creative Commons Attribution License, which permits unrestricted use, distribution, and reproduction in any medium, provided the original author and source are credited.

There were three errors in **Figure 5**, and we have corrected data in the result sections. First, in the results section (page 203, **Figure 5A**), there is an error in the legend box. (Column 1 as “Period”), the label “1” should be amended a “1=1989–93”. It is not, “1=1994–93”

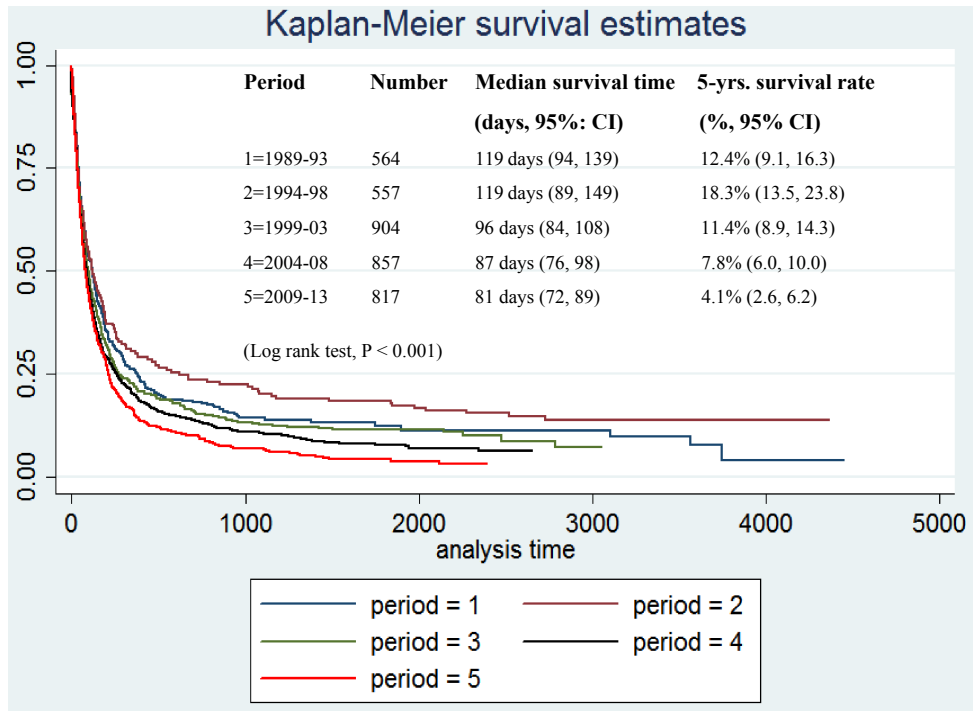
Second, in the results section (page 203, **Figure 5B**), there are errors in the legend box (Column 1 as “Period”), the label “1” should be amended a “1=1989–93”. It is not, “1=1994–93”. The column 2 as “Number”, the number for “1=1989–93”, “2=1994–98”, “3=1999–03”, “4=2004–08”, “5=2009–13” should be amended as 564, 557, 904, 857, and 817, respectively.

Third, in the results section (page 203, **Figure 5B**), the Survival curve was duplicated from **Figure 5A**, it should be changed to the correct figure.

The correct **Figure 5** is provided below. The authors apologize for these errors.



(a)



(b)

**Figure 5.** Kaplan-Meier survival curves for males (a) and females (b) with CCA in Khon Kaen Province from 1989 through 2013. The curves represents periods of time. CI, confidence interval.