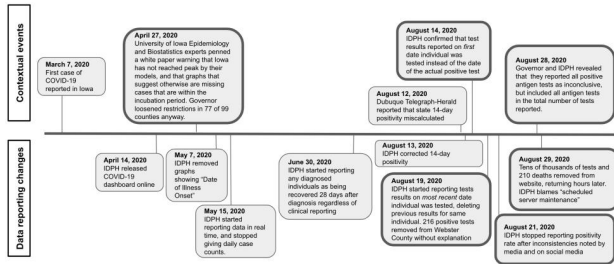
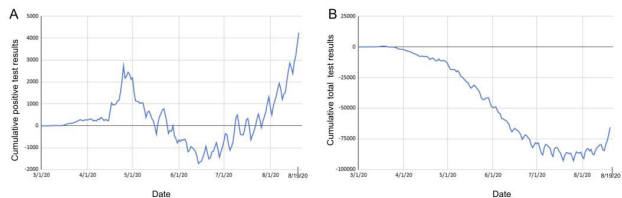


networks). Data include: number and type of tests, results, hospitalizations, intensive care unit admissions, and deaths at state/county levels.

Results. Discrepancies were identified between IDPH and non-IDPH data, with at least two confirmed by IDPH: (1) The backdating of test results identified on May 28, 2020. IDPH labeled results as occurring up to four months before the actual test date. IDPH confirmed that if a person previously tested for SARS-CoV-2, a new test result was attributed to the initial test's date. Corrections on August 19, 2020 increased positivity rates in 31 counties, but decreased the state's overall rate (9.1% to 7.5%). (2) The selective exclusion of antigen test results noted on August 20, 2020. Antigen testing was included in the total number of tests reported in metric denominators, but their results were being excluded from their respective numerators. Thus, positive antigen results were interpreted as de facto negative tests, artificially lowering positivity rates. Corrections increased Iowa's positivity rate (5.0% to 14.2%). In July 2020, the Iowa Department of Education mandated in-person K-12 learning for counties with < 15% positivity. These data changes occurred during critical decision-making, altering return-to-learn plans in seven counties. The Center for Medicare and Medicaid Services' requirements also caused nursing homes to urgently revise testing strategies.



Timeline of changes to Iowa state COVID-19 testing through the end of August 2020.



Change in positive and overall test results due to IDPH data corrections. These graphs represent the difference in cumulative total reported test results when pulled from the IDPH website on September 29, 2020 compared to data for the same dates when pulled on August 19, 2020 before the announced adjustment. The adjustment and subsequent daily changes in reported data amount to a dramatic change in the number of reported positive cases (A) with an increase of nearly 3,000 cases by April 25, as well as the loss of tens of thousands of data points when tracking total resulted tests (B).

Conclusion. Data availability, quality, and transparency vary widely across the US, hindering science-based policymaking. Independent audit and curations of data can contribute to better public health policies. We urge all states to increase the availability and transparency of public health data.

Disclosures. All Authors: No reported disclosures

382. Vitamin D Supplementation and Covid 19: Results from the U.S. N3C Data Enclave

Kim Murray, MPP¹; Kathleen M. Fairfield, MD, MPH, DrPH²; Clifford James Rosen, MD¹; Sally L. Hodder, M.D.³; Jeremy Harper, MS⁴; ¹Maine Medical Center Research Institute, Portland, Maine; ²Maine Medical Center, Portland, Maine; ³West Virginia University School of Medicine, Morgantown, West Virginia; ⁴Owl Health Works, Indianapolis, Indiana

Session: P-16. COVID-19 Epidemiology and Screening

Background. It is estimated that 18% of adults in the U.S. take Vitamin D supplements. Some observational studies suggest that vitamin D supplementation activates the innate immune system and reduces the incidence and severity of viral infections. During the SARS-CoV-2 pandemic, vitamin D supplements were touted as a potential therapy to prevent the disease and/or complications. However, supportive evidence is lacking.

Methods. The National COVID Cohort Collaborative (N3C) enclave is the largest COVID-19 data base with nearly 1.4 million positive patients at 56 sites in the U.S. We performed a retrospective analysis of vitamin D supplementation, either prescribed before or during hospitalization for SARS-CoV-2.

Results. 137,399 people took vitamin D supplements out of 1.4 million. Females prescribed vitamin D outnumbered males by almost 2:1, whereas in non-users there were no sex differences. Most supplement users were older than 50. African Americans constituted 13% of the non-users, but 23% of those prescribed vitamin D. Infected individuals with any vitamin D supplementation, pre-Covid, post-Covid or both, had a 6.66% mortality rate vs 2% mortality in non-users. Similarly, nearly a third of the

supplement users were hospitalized compared to 11% in the non-users. The Charlson Co-Morbidity Index was 3.0±3 (SD) in users vs 1.0±2 (SD) in non-users.

Conclusion. 10% of SARS-CoV-2 infected patients were taking vitamin D. They tended to be older, more likely to be African American and have significant co-morbidities. Hospitalization and mortality were higher among those taking Vitamin D in this cohort. Vitamin D is widely used to prevent and treat SARS-CoV-2 but without evidence of efficacy.

Disclosures. Sally L. Hodder, M.D., Gilead (Advisor or Review Panel member)Merck (Grant/Research Support, Advisor or Review Panel member)Viv Healthcare (Grant/Research Support, Advisor or Review Panel member)

383. Feasibility of Specimen Self-collection in Young Children Undergoing SARS-CoV-2 Surveillance for In-person Learning

Jonathan Altamirano, M.S.¹; Grace Tam, BS²; Marcela Lopez, BA²; India Robinson, BS²; Leanne Chun, BBiomed²; Nuzhat Shaikh, MBBS²; Sean Leary, B.S.¹; Yuan J. Carrington, BA²; Shilpa Jani, MPH²; Uma Pulendran, MPH²; Jasmin Ma, BS²; Elizabeth Toomarian, PhD²; C. Jason Wang, MD, PhD²; Prasanthi Govindarajan, MBBS²; Andra Blomkalns, MD, MBS²; Makeda Robinson, MD, PhD²; Yvonne A. Maldonado, MD²; ¹Stanford University School of Medicine, Stanford, CA; ²Stanford University, Stanford, CA

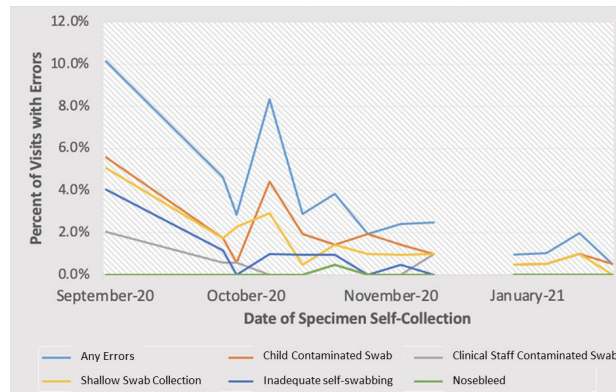
Session: P-16. COVID-19 Epidemiology and Screening

Background. While pediatric cases of COVID-19 are at low risk for adverse events, schoolchildren should be considered for surveillance as they can become infected at school and serve as sources of household or community transmission. Our team assessed the feasibility of young children self-collecting SARS-CoV-2 samples for surveillance testing in an educational setting.

Methods. Students at a K-8 school were tested weekly for SARS-CoV-2 from September 2020 - June 2021. Error rates were collected from September 2020 - January 2021. Clinical staff provided all students with instructions for anterior nares specimen self-collection and then observed them to ensure proper technique. Instructions included holding the sterile swab while making sure not to touch the tip, inserting the swab into their nostril until they start to feel resistance, and rubbing the swab in four circles before repeating the process in their other nostril. An independent observer timed random sample self-collections from April - June 2021.

Results. 2,590 samples were collected from 209 students during the study period when data on error rates were collected. Errors occurred in 3.3% of all student encounters (n=87). Error rates over time are shown in Figure 1, with the highest rate occurring on the first day of testing (n=20/197, 10.2%) and the lowest in January 2021 (n=1/202, 0.5%). 2,574 visits for sample self-collection occurred during the study period when independent timing data was collected (April - June 2021). Of those visits, 7.5% (n=193) were timed. The average duration of each visit was 70 seconds.

Figure 1. Swab Error Rates Over Time



Conclusion. Pediatric self-collected lower nasal swabs are a viable and easily tolerated specimen collection method for SARS-CoV-2 surveillance in school settings, as evidenced by the low error rate and short time window of sample self-collection during testing. School administrators should expect errors to drop quickly after implementing testing.

Disclosures. All Authors: No reported disclosures

384. SARS-CoV-2 Surveillance Testing Patterns among Hospitalized Pediatric Patients in a Single Academic Medical Center

Areej Bukhari, MD¹; Jessica Seidelman, MD, MPH¹; Becky A. Smith, MD¹; Sarah S. Lewis, MD, MPH¹; Michael J. Smith, MD, M.S.C.E²; Rebekah W. Moehring, MD, MPH³; Deverick J. Anderson, MD, MPH³; Bukunoluwa Akinboyo, MD¹; ¹Duke University, Durham, North Carolina; ²Duke University Medical Center, Durham, North Carolina; ³Duke Center for Antimicrobial Stewardship and Infection Prevention, Durham, NC