

# A Method for Removal of Low Frequency Components Associated with Head Movements from Dual-Axis Swallowing Accelerometry Signals

Ervin Sejdić<sup>1\*</sup>, Catriona M. Steele<sup>2,3</sup>, Tom Chau<sup>3</sup>

**1** Department of Electrical and Computer Engineering, University of Pittsburgh, Pittsburgh, Pennsylvania, United States of America, **2** Toronto Rehabilitation Institute and Department of Speech-Language Pathology, University of Toronto, Toronto, Ontario, Canada, **3** Bloorview Research Institute, Holland Bloorview Kids Rehabilitation Hospital and Institute of Biomaterials and Biomedical Engineering, University of Toronto, Toronto, Ontario, Canada

## Abstract

Head movements can greatly affect swallowing accelerometry signals. In this paper, we implement a spline-based approach to remove low frequency components associated with these motions. Our approach was tested using both synthetic and real data. Synthetic signals were used to perform a comparative analysis of the spline-based approach with other similar techniques. Real data, obtained from 408 healthy participants during various swallowing tasks, was used to analyze the processing accuracy with and without the spline-based head motions removal scheme. Specifically, we analyzed the segmentation accuracy and the effects of the scheme on statistical properties of these signals, as measured by the scaling analysis. The results of the numerical analysis showed that the spline-based technique achieves a superior performance in comparison to other existing techniques. Additionally, when applied to real data, we improved the accuracy of the segmentation process by achieving a 27% drop in the number of false negatives and a 30% drop in the number of false positives. Furthermore, the anthropometric trends in the statistical properties of these signals remained unaltered as shown by the scaling analysis, but the strength of statistical persistence was significantly reduced. These results clearly indicate that any future medical devices based on swallowing accelerometry signals should remove head motions from these signals in order to increase segmentation accuracy.

**Citation:** Sejdić E, Steele CM, Chau T (2012) A Method for Removal of Low Frequency Components Associated with Head Movements from Dual-Axis Swallowing Accelerometry Signals. PLoS ONE 7(3): e33464. doi:10.1371/journal.pone.0033464

**Editor:** Wilbur Lam, Emory University/Georgia Institute of Technology, United States of America

**Received:** November 3, 2011; **Accepted:** February 14, 2012; **Published:** March 29, 2012

**Copyright:** © 2012 Sejdić et al. This is an open-access article distributed under the terms of the Creative Commons Attribution License, which permits unrestricted use, distribution, and reproduction in any medium, provided the original author and source are credited.

**Funding:** This research was funded in part by the Ontario Centres of Excellence, the Toronto Rehabilitation Institute, Bloorview Kids Rehab, and the Canada Research Chairs Program. The funders had no role in study design, data collection and analysis, decision to publish, or preparation of the manuscript.

**Competing Interests:** The authors have declared that no competing interests exist.

\* E-mail: esejdic@ieee.org

## Introduction

Patients living with the effects of stroke or neurodegenerative conditions commonly encounter swallowing difficulties (dysphagia) [1]. Dysphagia occurs for various reasons in these patients (e.g., damage to the cranial nerves associated with the swallowing neural control centers) [2]–[4]. These patients have an increased risk for aspiration (the entry of material into the airway below the true vocal folds), which may cause asphyxiation and other severe consequences [5], [6]. The videofluoroscopic swallowing study (VFSS) is the current gold standard for detection and management of dysphagia [7]. Nevertheless, the VFSS is not suitable for ongoing monitoring for various reasons including excessive exposure to radiation, long waiting lists at hospitals and unavailability of the equipment at every hospital [8], [9]. In recent years, swallowing accelerometry has emerged as an alternative approach for the non-invasive assessment of swallowing function (e.g., [2], [3]) and it involves the measurement of epidermal vibrations using an accelerometer on the patient's neck. Due to the presence of two-dimensional movement of the hyoid and the larynx during swallowing [10], [11], dual-axis accelerometers provide more accurate results [12], [13] than single-axis accelerometers [14]–[17].

Previous contributions have observed that swallowing accelerometry signals contain low frequency components associated with head motions (e.g., [12], [13]). Extensive head motions can severely alter the amplitudes of dual-axis swallowing accelerometry signals. As a consequence, the accuracy of segmentation process can be affected by these head motions [12]. Similarly, these movements also affect the statistical properties of signals (e.g. [18], [19]). Therefore, there is a growing need for the automatic removal of these low frequency components associated with head motions from swallowing accelerometry signals. The goal of this paper is to develop such a system in order to increase the accuracy of processing steps of these dual-axis swallowing signals (e.g., improved segmentation of swallowing signals).

## Methods

### Data collection

In this paper, we analyzed the data collected in previous studies of swallowing accelerometry [12], [20], [21], [22]. The reader should refer to those publications for full details regarding the experiment. Here, we only provide the most essential details. We recruited four hundred and eight (408) participants (aged 18–65) who provided written consent and had no known prior swallowing disorders. The study protocol was approved by the research ethics

boards of the Toronto Rehabilitation Institute and Holland Bloorview Kids Rehabilitation Hospital, both located in Toronto, Ontario, Canada. A dual-axis accelerometer (ADXL322, Analog Devices) was attached to the participant’s neck (anterior to the cricoid cartilage) using double-sided tape. The axes of acceleration were aligned to the anterior-posterior and superior-inferior directions, as shown in Figure 1. Data were band-pass filtered in hardware with a pass band of 0.1–3000 Hz and sampled at 10 kHz using a custom LabVIEW program running on a laptop computer. Data were saved for subsequent off-line analysis.

First, each participant was cued to perform 5 saliva swallows. Subsequently, the participant completed 5 water swallows by cup with their chin in the natural position (i.e., perpendicular to the floor) and 5 water swallows in the chin-tucked position (i.e., as depicted in Figure 1, with the instruction to look down at the knees while swallowing). The entire data collection session lasted 15 minutes per participant.

### Splines and dual-axis swallowing accelerometry signals

A typical swallowing accelerometry signal,  $x(n)$ , can be expressed as:

$$x(n) = \zeta(n) + \phi(n) + \epsilon(n) \tag{1}$$

where  $0 \leq n \leq N - 1$  and  $N$  represents the length of the signal,  $\zeta(n)$  is a low-frequency signal associated with head motions,  $\phi(n)$  is a signal associated with swallowing activities of a person, and  $\epsilon(n)$  is the additive white Gaussian noise with variance  $\sigma_\epsilon^2$ . As pointed out in previous contributions (e.g., [12], [13]), any head motion can significantly alter the amplitudes of dual-axis swallowing accelerometry signals and hence confound any consequent data processing steps. Therefore, we need to diminish the effects of  $\zeta(n)$ , while not removing any parts of  $x(n)$  associated with swallowing, i.e.,  $\phi(n)$ . A possible approach to achieve this goal is to obtain samples of  $x(n)$  using lower sampling frequencies (i.e., to resample  $x(n)$  using lower sampling frequencies) in order to extract  $\zeta(n)$  while neglecting components associated with  $\phi(n)$  and  $\epsilon(n)$ . In order to accomplish this goal we implement splines [23],

[24], [25], as they provide the best cost-performance trade-off among all interpolation/approximation methods [26].

In order to gain a better understanding of our approach, we outline the basic properties of splines in “Spline interpolations” followed by an explanation how splines can be used for approximation. Then, in “Splines as a tool for removal signal components associated with head movements” we describe how splines can be used for removal of low frequency components associated with head movements.

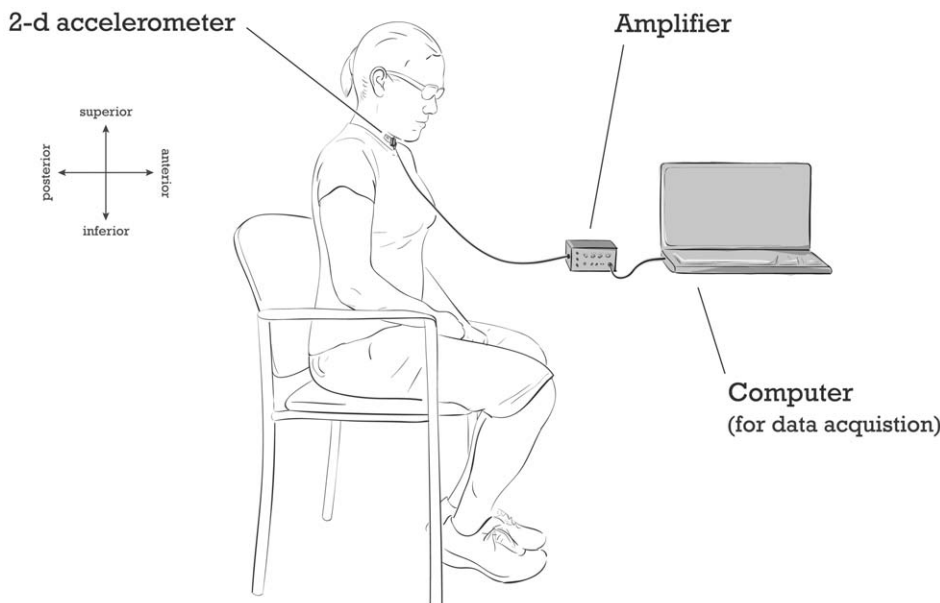
**Spline interpolations.** In simple words, splines of order  $P$  are equal to polynomials of degree  $p$  on each interval, and subsequent intervals are smoothly connected together [24], [25]. The connecting points are called knots [23], [24], [25]. It should be pointed out that the polynomials are connected in such a way that the overall function is  $(p - 1)$  times continuously differentiable even at the knots [23], [24], [25]. One of the first contributions in the field showed that discrete samples of a continuous signal,  $x(t)$ , can be represented using a  $p^{\text{th}}$  order spline with equidistant knots using the following equation [23], [24], [25]:

$$x(k) = \sum_{i=-\infty}^{+\infty} c(i)b_1^p(k-i) = b_1^p(k) * c(k) \tag{2}$$

where  $*$  represents convolution,  $c(k)$  is an  $l_2$  sequence of real numbers and  $b_1^p(k)$  is the finite impulse response of the operator known as the indirect spline filter of order  $p$ , i.e. the discrete B-spline. In other words, for  $p, m \in \mathbb{N}$ , the discrete B-spline,  $b_m^p(k)$ , is defined as a sequence of integral samples of the corresponding  $p^{\text{th}}$  order continuous B-spline,  $\beta^p(t)$ , expanded by a factor of  $m$  [23], [24], [25]:

$$b_m^p(k) = \beta^p(k/m) = \frac{1}{m^p} \sum_{j=0}^{p+1} \frac{(-1)^j}{j!} \binom{p+1}{j} (k-jm)^p \mu(k-jm) \tag{3}$$

where



**Figure 1. A dual-axis accelerometer attached to the participant’s neck.**  
doi:10.1371/journal.pone.0033464.g001

$$\mu(l) = \begin{cases} 1 & \text{for } l \geq 0 \\ 0 & \text{for } l < 0 \end{cases} \quad (4)$$

and

$$\binom{p+1}{j} = \frac{(p+1)!}{(p+1-j)!j!} \quad (5)$$

with the following starting condition:

$$b_m^0(k) = \begin{cases} 1 & \text{for } -m/2 \leq k \leq m/2 \\ 0 & \text{otherwise} \end{cases} \quad (6)$$

The B-splines of order  $p$  are compactly supported and symmetric around zero [23], [25], [27]. Furthermore, they provide a basis of the subspace of all continuous piecewise polynomial functions of degree  $p$  with derivatives up to order  $p-1$  that are continuous everywhere on the real line [23], [25], [27]. The zeroth order discrete spline,  $b_m^0(k)$ , is a rectangular window of width  $m$  that is centered with respect to the origin when  $m$  is odd. This operator corresponds to a moving average filter of size  $m$  that can be implemented recursively using a standard update procedure (two operations per sample value). For discrete B-splines with upsampling integer  $m$  greater than 1, a convolution property can be established [23], [24], [25]:

- $m$  is odd:

$$b_m^p(k) = \frac{1}{m^p} \left\{ b_m^0(k) \underset{p+1}{*} b_m^0(k) \right\} * b_1^p(k) \quad (7)$$

- $p$  odd and  $m$  even:

$$b_m^p(k) = \frac{1}{m^p} \delta_{(p+1)/2} * \left\{ b_m^0(k) \underset{p+1}{*} b_m^0(k) \right\} * b_1^p(k) \quad (8)$$

where  $\delta_i$  is a shift operator;

- $p$  even and  $m$  even:

$$b_m^p(k) = \frac{1}{m^p} \delta_{(p+2)/2} * \left\{ b_m^0(k) \underset{p+1}{*} b_m^0(k) \right\} * b_1^p(k-0.5) \quad (9)$$

where  $\underset{p+1}{*}$  denotes  $p+1$  consecutive convolutions of a signal with itself. These equations demonstrate that discrete B-splines of various widths can be constructed from repeated convolution of simple moving average filters ( $b_m^0(k)$ ) and a correction kernel ( $b_1^p(k)$ ). The main advantage is that both the direct spline transform (the process of determining the expansion coefficients) and the indirect spline transform (the process of reconstructing the original sampled values with an optional interpolation) can be interpreted as simple filtering operations. Therefore, the above result suggests that the spline coefficients,  $c(k)$ , can be determined simply by inverse filtering [23], [25], [27]. Also, in the case that one desires to obtain the discrete signal,  $x(k)$ , at a higher sampling rate, i.e., using an integral up-sampling factor  $m$ , then the reconstruction given by (2) can be rewritten as [23], [25], [27]:

$$x_m(k') = \sum_{i=-\infty}^{\infty} c(i) b_m^p(k' - im) \quad (10)$$

Furthermore, if a basic operation of the up-sampling of a signal  $\{x(k)\}$  by a factor  $m$  which produces the new sequence  $\{[x]_{\uparrow m}(k')\}$  defined as

$$[x]_{\uparrow m}(k') = \begin{cases} x(k) & \text{for } k' = mk \\ 0 & \text{otherwise} \end{cases} \quad (11)$$

then by substituting  $[c]_{\uparrow m}(k')$  in (10), it can be rewritten as [25], [27]:

$$x_m(k') = b_m^p * [c]_{\uparrow m}(k'). \quad (12)$$

It should be pointed out that the requirement of  $m$  being an integer is not a major limitation since any rational sampling rate can be obtained from a succession of integral interpolations and decimations [25], [27].

**Spline approximations.** The use of B-splines extends beyond simple interpolation. In particular, we are interested in obtaining B-spline approximations [27]. They are quite useful in noise reduction and data compression (e.g., [28]). In our case, we use them to approximate low frequency components associated with head movements, which are present in the dual-axis swallowing accelerometry signals. Such B-splines approximations can be obtained by imposing smoothness constraints on the solution (smoothing splines), or by reducing the number of coefficients (least square approximation) [24], [29]. Nevertheless, the smoothing spline has as many coefficients as the initial signal, which is not desired in our case due to computational complexity. It has been suggested that by implementing the so-called least square splines we can deal with fewer degrees of freedom [24]. De Boor described a general method for determining such solutions in the case of arbitrarily spaced data points that relies on the use of standard least squares approximation techniques [24]. The approach used here considers equally spaced nodes since it leads to substantial computational simplifications. When dealing with discrete signals, this approximation method involves some form of decimation of the spline coefficients [24], [29]. This technique is conceptually similar to resampling a signal at a lower rate which requires the use of an antialiasing filter for bandlimited approximation of a signal with minimum error. In this sense, the present theory of B-splines fitting is an extension of the conventional sampling theorem for the subspace of piecewise polynomial functions of class  $C^{p-1}(-\infty, +\infty)$  with equally spaced nodes [24], [29].

In our case, we wish to determine the least squares spline coefficients that minimize the approximation error:

$$\epsilon_m = \sum_{k=-\infty}^{+\infty} \left( x(k) - b_m^p * [c]_{\uparrow m}(k) \right)^2 \quad (13)$$

and it has been shown that the expression can be solved by inverse filtering [25], [27]:

$$c(k) = x_m^p * [b_m^p * x]_{\uparrow m}(k) \quad k \in \mathbb{Z} \quad (14)$$

where the postfilter  $x_m^p(k)$  is defined by

$$x_m^p(k) := ([b_m^p * b_m^p])^{-1}(k) \tag{15}$$

These results suggest a simple three step procedure for the determination of the least square B-spline coefficients [29]. First, we perform a prefiltering with a B-spline kernel of width  $m(b_m^p)$ . This operation is equivalent to an indirect B-spline transform. Second, a decimation by a factor of  $m$  is carried out. This step samples the signal at the position of the knots of the expanded B-spline basis functions. Third, we conduct a postfiltering of a decimated sequence with the least squares operator.

**Splines as a tool for removal signal components associated with head movements.** Our approach is based on the idea of approximating  $\zeta(n)$  and removing it from  $x(n)$ . However, since we only have access to  $x(n)$ , our algorithm approximates  $\zeta(n)$  using the least squares spline approximation of  $\zeta(n)$  and removes it from  $x(n)$  with following steps:

- Using  $M \ll N$  knots, determine a least square approximation of the expansion coefficients using

$$c_{app}(k) = ([b_m^p * b_m^p])^{-1} * [b_m^p * x]_{\uparrow m}(k) \tag{16}$$

- Using the approximated expansion coefficients, reconstruct  $\zeta(n)$  using the B-spline indirect transformations:

$$\hat{\zeta}(k) = b_m^p * [c_{app}]_{\uparrow m}(k) \tag{17}$$

- We remove the low frequency components associated with head movements using  $\hat{\zeta}(n)$ :

$$\hat{x}(n) = x(n) - \hat{\zeta}(n) \tag{18}$$

An important question here is how do we choose  $M$ ? First, let's consider the meaning of  $M$ . Essentially,  $M$  represents the number of knots, that is, the number of samples that we will use to approximate these low frequency components. Hence,  $M$  is proportional to the number of samples,  $N$ , and to this new (re)sampling frequency. The frequency has to be sufficiently small in order to avoid sampling vibrations associated with swallowing. On the hand, it has to be sufficiently high to appropriately sample the low frequency vibrations associated with the head movements. The question is how do we choose this new (re)sampling frequency? There is no fundamental difference between the process of performing a least-square spline approximation of a signal and obtaining its band-limited representation using the standard sampling procedure dictated by Shannon's theory [25]. However, is there any equivalent of the sampling theorem that tells us that the signal can be reconstructed exactly if it is sampled at a frequency  $1/T$  that is at least twice the Nyquist rate? In principle, one should expect a similar result, at least for higher-order splines [25]. Because we are performing an orthogonal projection, the approximation error will be generally non-zero unless the signal is already included in the approximation space [25]. However, we can hope to control this error by choosing a sampling step  $T$  that is sufficiently small. To analyze this situation, which is more complicated than the traditional band-limited case, we turn to

approximation theory. A fundamental result is that that the rate of decay  $L$  of the error as a function of  $T$  depends on the ability of the representation to reproduce polynomials of degree  $p = L - 1$ . The approximation error also depends on the bandwidth of the signal [25]. The relevant measure in this context is [25]:

$$\|x^{(L)}\| = \left( \frac{1}{2\pi} \int_{-\infty}^{+\infty} \omega^{2L} |X(\omega)|^2 d\omega \right)^{\frac{1}{2}} \tag{19}$$

where  $X(\omega)$  denotes the Fourier transform of  $x$ ; this is nothing but the norm of the  $L^{th}$  derivative of  $x$ . The key result from the Strang-Fix theory of approximation is the following error bound [25]:

$$\|x - P_T x\| \leq C_L T^L \|x^{(L)}\| \quad \forall x \in W_2^L \tag{20}$$

where  $P_T x$  is the least-squares spline approximation of  $f$  at sampling step  $T$  and  $C_L$  is a known constant.  $W_2^L$  denotes the space of functions that are  $L$  times differentiable in the finite-energy sense. In other words, the error will decay like  $O(T^L)$ , where the order  $L = p + 1$  is one more than the degree  $p$  [25].

Hence, using these previous findings, we used  $M = \lceil \frac{N f_l}{f_s} \rceil$ , where  $\lceil \alpha \rceil = \min\{\beta \in \mathbb{N} | \beta \geq \alpha\}$ ,  $f_s$  is the original sampling frequency and  $f_l$  is the lower sampling frequency. Specifically, this  $f_l$  is proportional to the frequency associate with head motions. A recent contribution showed that the frequencies associated with head motions are given by the following interval  $0.55 \pm 0.18$  Hz in the A-P direction, and  $0.64 \pm 0.28$  Hz in the S-I direction [30]. Therefore, we expect that  $f_l$  is at least twice the highest frequency in each direction. However, a numerical analysis, as described in Section "Data analysis", will be carried out to determine a precise value of  $f_l$  for the A-P and S-I directions.

Due to the fact that the approximation error decreases proportionally to the order of the approximating polynomial, we used fourth order splines in our research. Specifically, we choose a fourth order, since it has been shown that there are no significant gains in performance between the fourth and higher order polynomials (e.g., fifth and sixth orders), while schemes based on higher order polynomials take longer time to execute [26].

### Data analysis

Our data analysis was a three-part process. The first two parts involved the analysis of the proposed approach using synthetic signals, while the third part involved the analysis of real dual-axis swallowing accelerometry signals that were acquired as described in Section "Data collection".

In the first part, we simulated swallowing signals to analyze the effects of varying signal-to-noise ratio (SNR) on the value of  $f_l$ . Our goal was to systematically analyze whether or not statistically equivalent values of  $f_l$  were obtained under various noise conditions. To ensure that the test signals mimicked the dual-axis swallowing accelerometry signals (i.e. the signal model depicted by eqn. (1)), we split the modeling into two parts. The model for  $\zeta(n)$  is given by:

$$\zeta(n) = \sum_{h=1}^3 A_h \sin(2\pi f_h n T) \tag{21}$$

where  $T = 0.0001$  seconds;  $1 \leq n \leq N$  and  $N \sim \mathcal{N}(300000, (50000)^2)$  with a constraint that  $N > 150000$ .  $A_h$  is uniformly drawn from  $[0, 0.1]$  for the A-P direction and from  $[0, 0.3]$  for the S-I

direction. Similarly,  $f_h$  is uniformly drawn from [0.37,0.73] Hz for the vibrations in the A-P direction, and from [0.36,0.92] Hz for the vibrations in the S-I direction, where these frequency bands were based on the results of a spectral analysis of data from [30]. To model the combined effects of  $\phi(n)$  and  $\epsilon(n)$ , we implemented a model used in [12], which mandated that there should be five distinct intervals where the variance of the signals increase above the baseline variance and each of the five intervals should have random duration and random frequency components to mimic intersubject variations.  $\epsilon(n)$  was represented by additive white Gaussian noise with variance  $\sigma^2$ . The synthetic swallowing signals are given by:

$$\phi(n) = \begin{cases} \sum_{w=1}^8 0.2 \sin(2\pi f_{j_w} n T) & n_1 \leq n \leq n_2 \\ \sum_{w=1}^8 0.2 \sin(2\pi f_{j_w} n T) & n_3 \leq n \leq n_4 \\ \sum_{w=1}^8 0.2 \sin(2\pi f_{j_w} n T) & n_5 \leq n \leq n_6 \\ \sum_{w=1}^8 0.2 \sin(2\pi f_{j_w} n T) & n_7 \leq n \leq n_8 \\ \sum_{w=1}^8 0.2 \sin(2\pi f_{j_w} n T) & n_9 \leq n \leq n_{10} \\ 0 & \text{otherwise} \end{cases} \quad (22)$$

where  $N > n_{10} > n_9 > \dots > n_1$ ;  $|n_{2q} - n_{2q-1}| \sim \mathcal{N}(150000, (2500)^2)$  for  $1 \leq q \leq 5$  with a constraint that  $|n_{2q} - n_q| > 5000$ ;  $n_{2\kappa+1} - n_{2\kappa-1} = \lfloor N/5 \rfloor$  where  $1 \leq \kappa \leq 4$ ; and  $f_j \sim \mathcal{N}(10, (10)^2)$ . It should be noted that the models for low-frequency components associated with head motions given by eqn. (21) and dual-axis swallowing accelerometry signals given by eqn. (22) do not necessarily represent realistic signals, since the physiological characteristics of such signals are still largely unknown. The proposed model rather depicts statistical behaviour of those signals, i.e. the activity regions have higher variances than the baseline regions, and is only used for an accuracy analysis of the proposed algorithm. Also, for the purpose of notational simplicity we only discuss vibrations in one direction. Nevertheless, these equations apply to both directions.

Using these simulated signals, our goal was to investigate the optimal value of  $f_i$  in each direction, i.e., the value of  $f_i$  providing us with the smallest error. Specifically, we varied the value of SNR between 0 dB and 30 dB in 5-dB increments and calculated the mean square error (MSE) using 100 realizations of

$$\chi(n) = \zeta(n) + \phi(n) + \epsilon(n) \quad (23)$$

as follows:

$$MSE = \frac{1}{N} \sum_{n=1}^N (\zeta(n) - \zeta_{app}(n))^2 \quad (24)$$

where  $\zeta_{app}(n)$  represents the approximated low frequency oscillations.

In the second part of the analysis we compared performances of our approach against well known approaches based on empirical mode decomposition (EMD) [31], the smoothness priors method (SPM) [32], and piecewise polynomial fitting (PPF) [33]. Specifically, for SPM we divided signals into 1000 subintervals, while for PPF signals were divided into 5000 subintervals. Also, we used second-order polynomials for PPF. We compared these four methods for various levels of SNR ranging from 0 to 30 dB in 1 dB increments. For each SNR value, we calculated the normalized MSE (NMSE) as:

$$NMSE = \frac{\sum_{n=1}^N (\zeta(n) - \zeta_{app}(n))^2}{\sum_{n=1}^N (\chi(n))^2} \quad (25)$$

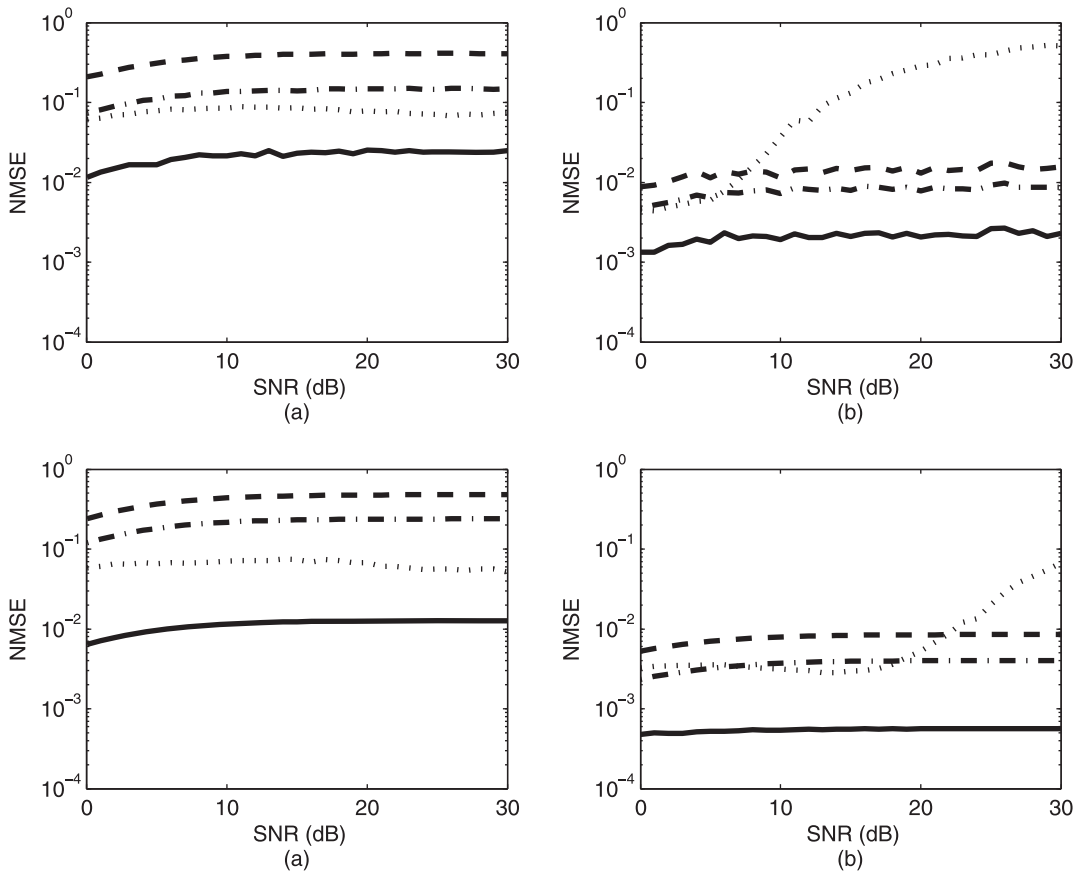
NMSE was calculated using 500 realizations of (23) under two different conditions. One condition implied that we generated new versions of  $\zeta(n)$ ,  $\phi(n)$ , and  $\epsilon(n)$  with each new realization of (23). The second condition involved keeping  $\zeta(n)$ ,  $\phi(n)$  constant, while obtaining a new version of  $\epsilon(n)$  for each new realization.

The third part of our experiment involved the analysis of real swallowing signals as described in Section ‘‘Data collection’’. Specifically, we examined the effect of removing low frequency components associated with head movements on segmentation accuracy and statistical persistence observed in these signals. To investigate the effects on the segmentation accuracy, we initially segmented recordings containing head movements using the procedure described in [12]. For each recording, we denoted the number of swallows present, the number of correctly segmented swallows (CSS), the number of false positives (NFP) and the number of false negatives (NFN). A swallow was considered correctly identified only when more than 90% of the swallow duration was captured by the segmentation process. As the second step of this analysis, the recordings were pre-processed using the proposed approach and segmented as outlined in [12]. CSS, NFP and NFN were subsequently computed and compared to values obtained without head movement removal. To investigate the effects of head movement removal on statistical persistence, our last step of data analysis involved detrended fluctuation analysis (DFA) of dual-axis swallowing accelerometry signals. Specifically, we followed the steps outlined in [18], [19]. Our goal was to compare the strength of the statistical persistence (reflected through the so-called scaling exponent,  $\alpha$ ) before and after removal of low frequency components. In other words, we examined whether previously reported trends in statistical persistence were observed even when we removed these components.

**Table 1.** Values of  $f_i$  in both directions providing the smallest MSE.

	0 db	5 dB	10 dB	15 dB	20 dB	25 dB	30 dB
A-P	1.60 ± 0.39	1.67 ± 0.45	1.69 ± 0.43	1.72 ± 0.48	1.67 ± 0.44	1.61 ± 0.42	1.73 ± 0.41
S-I	3.73 ± 0.91	3.89 ± 0.94	3.95 ± 0.78	3.65 ± 0.95	3.68 ± 0.95	3.98 ± 0.78	3.51 ± 1.01

doi:10.1371/journal.pone.0033464.t001



**Figure 2. A comparison of accuracies for the proposed method (solid line), SPM (dashed line), PPF (dash-dotted line) and EMD (dotted line).** (a) and (b) represent NMSE in the A-P and S-I directions, respectively, while generating new versions of  $\zeta(n)$ ,  $\phi(n)$ , and  $\epsilon(n)$  with each new realization of eqn. (23). (c) and (d) represent NMSE in the A-P and S-I directions, respectively, while keeping  $\zeta(n)$ ,  $\phi(n)$  constant and obtaining a new version of  $\epsilon(n)$  for each new realization of eqn. (23). doi:10.1371/journal.pone.0033464.g002

In order to establish statistical significance of our results, a non-parametric inferential statistical method known as the Mann-Whitney test was used [34], which assesses whether observed samples are drawn from a single population (i.e., the null hypothesis). For multi-group testing, the extension of the Mann-Whitney test known as the Kruskal-Wallis was used [35]. A 5% significance was used.

**Results and Discussion**

Table 1 summarizes the results of the first part of the analysis. From these results, it is obvious that the sampling frequency in

either direction remains equal regardless of the noise level (Kruskall-Wallis,  $p_{A-P} = 0.38$ ,  $p_{S-I} = 0.06$ ). Therefore, the average sampling frequency in the A-P direction is 1.67 Hz, while the average sampling frequency in the S-I direction is 3.77 Hz. These average values will be used in further analysis of the simulated and real data. As described in Section ‘‘Splines as a tool for removal signal components associated with head movements’’, it is rather clear that we can find an approximate value of the lower sampling frequency that will be consistent in terms of the error.

Figure 2 depicts the results of the comparison analysis. The proposed method (solid line) achieves the smallest MSE regardless of the condition, followed by the EMD approach in the A-P

**Table 2. Segmentation accuracy before and after removing low-frequency components.**

Swallowing type	TNS	Before removal			After removal		
		CSS	NFP	NFN	CSS	NFP	NFN
Dry swallows	1819	95.7	8.30	4.40	97.0	6.76	3.08
Wet swallows	1975	95.2	6.23	4.81	97.5	3.59	2.48
Wet chin tuck	1932	82.4	23.8	17.4	86.0	16.41	14.0
Overall	5726	91.1	12.8	8.91	93.4	8.92	6.57

TNS = total number of swallows; CSS = correctly segmented swallows; NFP = number of false positives; NFN = number of false negatives. doi:10.1371/journal.pone.0033464.t002



**Table 3.** Comparison of the scaling exponent,  $\alpha$ , before and after low-frequency components.

Swallowing type	Before removal		After removal	
	A-P	S-I	A-P	S-I
Dry swallows	0.88 ± 0.23	1.09 ± 0.15	0.23 ± 0.14	0.08 ± 0.10
Wet swallows	0.97 ± 0.23	1.14 ± 0.16	0.45 ± 0.18	0.19 ± 0.12
Wet chin tuck	1.26 ± 0.23	1.42 ± 0.17	0.48 ± 0.20	0.14 ± 0.09

doi:10.1371/journal.pone.0033464.t003

direction and the PPF approach in the S-I direction. Except with the EMD approach, all other methods exhibited consistent error across various values of SNR. This is a desirable property in real-life applications, since it does not necessitate a priori denoising of signals. It should be mentioned that EMD can produce larger errors than other methods as shown in Figure 2. This is mainly due to the fact that EMD cannot differentiate properly between low frequency oscillations associated with the trend and higher frequency oscillations associated with the swallowing phenomenon.

Table 2 represents the results of the segmentation process accuracy. In particular, these results clearly depict that removing low frequency components associated with head movement increases accuracy. Overall, we witness a 27% drop in the number of false negatives and a 30% drop in the number of false positives.

The results for the last part of our analysis are summarized in Table 3. From these results it is clear that statistical persistence was significantly reduced after removing low frequency components. In fact, this finding was anticipated in [19], where we suggested that the expected  $\alpha$  values should be between 0 and 0.5, given that segments with small fluctuations (i.e., baseline) are intermingled with segments possessing larger fluctuations (i.e., swallows). Furthermore, we anticipated that the underlying baseline characteristics (e.g., weak vibrations caused by vasomotion) and head motions were largely responsible for the observed statistical persistence. In [19], we also concluded that these temporal dependencies should be considered in the development of accelerometry-based decision support tools. The findings presented in this paper confirmed our anticipatory remarks. They clearly show that these low-frequency components should be removed since they could potentially affect the accuracy of an accelerometry-based decision support tool.

We should mention that removing low frequency components associated with head motions did introduce any previously unreported trends [19]. In particular, consistent with previous studies, there were no gender (Mann-Whitney test,  $p > 0.14$ ), age (linear regression,  $p > 0.06$ ) or BMI (linear regression,  $p > 0.15$ ) differences in either direction.

## Conclusion

In this paper, an approach for the removal of low frequency components associated with head movements was proposed for dual-axis swallowing accelerometry signals. The scheme is based on spline least square approximations of the signal and is well-suited for long signals. First, we carried out a comparative analysis of our spline-based scheme against well-known approaches using synthetic signals. We found that the spline-based scheme provided more accurate segmentation results. Then, dual-axis swallowing accelerometry signals collected during 3 swallowing tasks completed by 408 healthy participants were processed using the spline approach. In particular, we found that by removing low frequency components associated with head movements we increased the accuracy of the segmentation process. Nevertheless, we observed a significant decrease in the strength of statistical persistence suggesting that any accelerometry-based decision support tools should remove these low-frequency components since they could confound the decision support process.

## Author Contributions

Conceived and designed the experiments: CMS TC. Performed the experiments: ES. Analyzed the data: ES. Contributed reagents/materials/analysis tools: ES CMS TC. Wrote the paper: ES CMS TC.

## References

- Miller AJ (1999) The neuroscientific principles of swallowing and dysphagia. San Diego, USA: Singular Publishing Group.
- Reddy NP, Costarella BR, Grotz RC, Canilang EP (1990) Biomechanical measurements to characterize the oral phase of dysphagia. *IEEE Transactions on Biomedical Engineering* 37: 392–397.
- Reddy NP, Canilang EP, Casterline J, Rane MB, Joshi AM, et al. (1991) Noninvasive acceleration measurements to characterize the pharyngeal phase of swallowing. *Journal of Biomedical Engineering* 13: 379–383.
- Reddy NP, Canilang EP, Grotz RC, Rane MB, Casterline J, et al. (1988) Biomechanical quantification for assessment and diagnosis of dysphagia. *IEEE Engineering in Medicine and Biology Magazine* 7: 16–20.
- Smithard DG, O'Neill PA, Park C, Morris J, Wyatt R, et al. (1996) Complications and outcome after acute stroke: Does dysphagia matter? *Stroke* 27: 1200–1204.
- Ekberg O, Hamdy S, Woisard V, Wuttge-Hannig A, Ortega P (2002) Social and psychological burden of dysphagia: Its impact on diagnosis and treatment. *Dysphagia* 17: 139–146.
- Logemann JA (1998) Evaluation and treatment of swallowing disorders. Austin, Texas, USA: PRO-ED, second edition.
- Steele C, Allen C, Barker J, Buen P, French R, et al. (2007) Dysphagia service delivery by speech-language pathologists in Canada: results of a national survey. *Canadian Journal of Speech-Language Pathology and Audiology* 31: 166–177.
- Ramsay DJC, Smithard DG, Kalra L (2006) Can pulse oximetry or a bedside swallowing assessment be used to detect aspiration after stroke? *Stroke* 37: 2984–2988.
- Ishida R, Palmer JB, Hiemae KM (2002) Hyoid motion during swallowing: Factors affecting forward and upward displacement. *Dysphagia* 17: 262–272.
- Kim Y, McCullough GH (2008) Maximum hyoid displacement in normal swallowing. *Dysphagia* 23: 274–279.
- Sejdić E, Steele CM, Chau T (2009) Segmentation of dual-axis swallowing accelerometry signals in healthy subjects with analysis of anthropometric effects on duration of swallowing activities. *IEEE Transactions on Biomedical Engineering* 56: 1090–1097.
- Lee J, Steele CM, Chau T (2008) Time and time-frequency characterization of dual-axis swallowing accelerometry signals. *Physiological Measurement* 29: 1105–1120.
- Lee J, Blain S, Casas M, Kenny D, Berall G, et al. (2006) A radial basis classifier for the automatic detection of aspiration in children with dysphagia. *Journal of NeuroEngineering and Rehabilitation* 3.
- Chau T, Chau D, Casas M, Berall G, Kenny DJ (2005) Investigating the stationarity of paediatric aspiration signals. *IEEE Transactions on Neural Systems and Rehabilitation Engineering* 13: 99–105.
- Das A, Reddy NP, Narayanan J (2001) Hybrid fuzzy logic committee neural networks for recognition of swallow acceleration signals. *Computer Methods and Programs in Biomedicine* 64: 87–99.

17. Reddy NP, Katakam A, Gupta V, Unnikrishnan R, Narayanan J, et al. (2000) Measurements of acceleration during videourorographic evaluation of dysphagic patients. *Medical Engineering and Physics* 22: 405–412.
18. Sejdic E, Steele CM, Chau T (2011) Scaling analysis of baseline dual-axis cervical accelerometry signals. *Computer Methods and Programs in Biomedicine* 103: 113–120.
19. Sejdic E, Steele CM, Chau T (2010) Understanding statistical persistence of dual-axis swallowing accelerometry signals. *Computers in Biology and Medicine* 40: 839–844.
20. Hung D, Sejdic E, Steele CM, Chau T (2009) Extraction of average neck exion angle during swallowing in neutral and chin-tuck positions. *BioMedical Engineering OnLine* 8: 25–1-9.
21. Sejdic E, Steele CM, Chau T (2010) A procedure for denoising dual-axis swallowing accelerometry signals. *Physiological Measurement* 31: N1–N9.
22. Sejdic E, Falk TH, Steele CM, Chau T (2010) Vocalization removal for improved automatic segmentation of dual-axis swallowing accelerometry signals. *Medical Engineering and Physics* 32: 668–672.
23. Unser M, Aldroubi A, Eden M (1991) Fast B-spline transforms for continuous image representation and interpolation. *IEEE Transactions on Pattern Analysis and Machine Intelligence* 13: 277–285.
24. Unser M, Aldroubi A, Eden M (1993) B-spline signal processing: Part I - theory. *IEEE Transactions on Signal Processing* 41: 821–833.
25. Unser M (1999) Splines: a perfect fit for signal and image processing. *IEEE Signal Processing Magazine* 16: 22–38.
26. Unser M (2002) Splines: a perfect fit for medical imaging. In: *Proc. of SPIE Conference on Medical Imaging 2002: Image Processing* San Diego, CA, USA, volume 4684. doi:10.1117/12.467162.
27. Unser M, Aldroubi A, Eden M (1993) B-spline signal processing: Part II - efficiency design and applications. *IEEE Transactions on Signal Processing* 41: 834–848.
28. Karczewicz M, Gabbouj M (1997) ECG data compression by spline approximation. *Signal Processing* 59: 43–59.
29. Unser M, Aldroubi A, Eden M (1992) Polynomial spline signal approximations: filter design and asymptotic equivalence with Shannon's sampling theorem. *IEEE Transactions on Information Theory* 38: 95–103.
30. Sejdic E, Steele CM, Chau T (2010) The effects of head movement on dual-axis cervical accelerometry signals. *BMC Research Notes* 3: 269–1-6.
31. Liang H, Lin QH, Chen JDZ (2005) Application of the empirical mode decomposition to the analysis of esophageal manometric data in gastroesophageal reflux disease. *IEEE Transactions on Biomedical Engineering* 52: 1692–1701.
32. Tarvainen MP, Ranta-aho PO, Karjalainen PA (2002) An advanced detrending method with application to HRV analysis. *IEEE Transactions on Biomedical Engineering* 49: 172–175.
33. Ghaffari A, Homaeinezhad MR, Atarod M, Akraminia M (2009) Parallel processing of ECG and blood pressure waveforms for detection of acute hypotensive episodes: a simulation study using a risk scoring model. *Computer Methods in Biomechanics and Biomedical Engineering*.
34. Mann HB, Whitney DR (1947) On a test of whether one of two random variables is stochastically larger than the other. *The Annals of Mathematical Statistics* 18: 50–60.
35. Kruskal WH, Wallis WA (1952) Use of ranks in one-criterion analysis of variance. *Journal of the American Statistical Association* 47: 583–621.