

RESEARCH ARTICLE

Contribution of bacterial pathogens to evoking serological disease markers and aggravating disease activity in rheumatoid arthritis

Kuniaki Terato^{1☉*}, Takaki Waritani^{1‡}, Richio Fukai^{2‡}, Hiroshi Shionoya^{3‡}, Hiroshi Itoh^{4‡}, Kou Katayama^{5☉}

1 Department of Research and Development, Chondrex Inc. Redmond, WA, United States of America, **2** Fukai Pharmacy, Asahikawa, Hokkaido, Japan, **3** Research Lab Section 5, Asama Chemicals Inc. Chiyoda, Tokyo, Japan, **4** Department of Orthopedic Surgery, Asahikawa Medical University, Asahikawa, Japan, **5** Katayama Orthopedic Rheumatology Clinic, Asahikawa, Hokkaido, Japan

☉ These authors contributed equally to this work.

‡ These authors also contributed equally to this work.

* terato@chondrex.com



OPEN ACCESS

Citation: Terato K, Waritani T, Fukai R, Shionoya H, Itoh H, Katayama K (2018) Contribution of bacterial pathogens to evoking serological disease markers and aggravating disease activity in rheumatoid arthritis. PLoS ONE 13(2): e0190588. <https://doi.org/10.1371/journal.pone.0190588>

Editor: Pierre Bobé, Université Paris-Sud, FRANCE

Received: July 20, 2017

Accepted: December 18, 2017

Published: February 6, 2018

Copyright: © 2018 Terato et al. This is an open access article distributed under the terms of the [Creative Commons Attribution License](https://creativecommons.org/licenses/by/4.0/), which permits unrestricted use, distribution, and reproduction in any medium, provided the original author and source are credited.

Data Availability Statement: All relevant data are within the paper and its Supporting Information files, with the exception of patient clinical data. The authors are prevented from releasing patient clinical data per the restrictions from Asahikawa Medical University. Patients' clinical data are available upon request; data requests can be addressed to Takeo Matsuno, MD., Chairman of Asahikawa Medical School Ethical Committee (tmatsuno@asahikawa-med.ac.jp).

Funding: The authors received no specific funding for this work. KT and TW declare that they received

Abstract

Commensal bacteria and their pathogenic components in the gastrointestinal tract and oral cavity may play pathological roles in autoimmune diseases. To study the possible involvement of bacterial pathogens in autoimmune diseases, IgG and IgA antibodies against pathogenic components produced by three strains of commensal bacteria, *Escherichia coli*-lipopolysaccharide (*E. coli*-LPS), *Porphyromonas gingivalis*-LPS (Pg-LPS) and peptidoglycan polysaccharide (PG-PS) from *Streptococcus pyogenes*, were determined by an improved ELISA system for sera from two groups of patients with rheumatoid arthritis (RA), who met rapid radiographic progression (RRP) criteria and non-RRP, and compared to normal (NL) controls. Antibody responses to these bacterial pathogens are unique and consistent in individuals, and no fundamental difference was observed between RA and NL controls. Despite the similar antibody responses to pathogens, lower IgG or higher IgA and consequent higher IgA/IgG antibody ratio among the patients with RA related to disease marker levels and disease activity. Peculiarly, the IgA/IgG anti-Pg-LPS antibody ratio resulted from lower IgG and higher IgA antibody responses to Pg-LPS strongly correlated not only with rheumatoid factor (RF), but also correlated with erythrocyte sedimentation rate (ESR), C-reactive protein (CRP) and disease activity score of 28 joints with ESR (DAS28-ESR) in the RRP group. In contrast, the IgA/IgG anti-*E. coli*-LPS and anti-PG-PS antibody ratio correlated or tended to correlate with RF, ESR, CRP, and DAS28-ESR in the non-RRP group, whereas either the IgG or IgA anti-Pg-LPS antibody levels and consequent IgA/IgG anti-Pg-LPS antibody ratio did not correlate with any clinical marker levels in this group. Notably, anti-circular-citrullinated peptide (CCP) antibody levels, which did not correlate with either IgG or IgA antibody levels to any pathogens, did not correlate with severity of arthritis in both RRP and non-RRP. Taken together, we propose that multiple environmental pathogens, which overwhelm the host antibody defense function, contribute independently or

salary support from Chondrex Inc., and HS from Asama Chemicals, respectively. RF and KK declare that they were supported by Fukai Pharmacy and Katayama Orthopedic Rheumatology Clinic, respectively. HI declares that he received salary from Asahikawa Medical University. The organizations provided support in the form of salaries for the authors (KT, TW, HS, RF, KK and HI) but did not play any roles in this study design, data collection and analysis, decision to publish or preparation of manuscript. The specific roles of these authors are articulated in the 'author contributions' section.

Competing interests: Kuniaki Terato and Takaki Waritani are employed by Chondrex Inc. Richio Fukai is employed by Fukai Pharmacy. Hiroshi Shionoya is employed by Asama Chemicals Inc. There are no patents, products in development or marketed products to declare. This does not alter our adherence to all the PLOS ONE policies on sharing data and materials.

concomitantly to evoking disease makers and aggravating disease activity, and affect disease outcomes.

Trial registration: UMIN CTR [UMIN000012200](https://clinicaltrials.gov/ct2/show/study?term=UMIN000012200)

Introduction

A variety of chronic and progressive inflammatory diseases are classified as autoimmune diseases. To search for disease-causative pathogens, numerous studies on antibody responses to putative pathogens were conducted, and commonly concluded that antibodies against putative pathogens are higher, or cross-react with major histocompatibility complex (MHC) molecules or other autologous components such as collagen in rheumatoid arthritis (RA) [1], and cardiac myosin in rheumatic heart disease [2]. Thus, autoimmunity in rheumatic diseases is thought to be induced by microbial infections via cross-reactivity or molecular mimicry [3].

Based on these concepts, antibody responses to variety of potential pathogenic environmental agents have been studied: for example, antibody responses to *Escherichia coli* (*E. coli*), *Klebsiella pneumoniae*, *Proteus mirabilis*, *Serratia marcescens* [3–8], *Porphyromonas gingivalis* (*P. gingivalis*) [6, 9], and lipopolysaccharides (LPS) produced by commensal bacteria [10]. Unfortunately, these studies were conducted using immunoassay systems such as radioimmunoassay (RIA) and enzyme-linked immunosorbent assay (ELISA) without considering the intense background (BG) noise reaction caused by hydrophobic binding of immunoglobulins and immune-complexes in sample specimens to plastic surfaces. Consequently, misinterpretation of serological antibody assay data, which are largely influenced by the strong BG noise reaction and other false positive reactions, has led to uncertain conclusions and misunderstandings as discussed in detail [11–14].

Meanwhile, a growing body of research has indicated a potential association between intestinal bacteria and autoimmune diseases [15–22]. More specifically, dysbiosis, or imbalance of intestinal bacterial flora in RA was suggested by many studies on possible composition changes in intestinal microbes [23–28]. Especially, Scher [29] clearly showed that an increase of *Prevotella copri* (*P. copri*) and a decrease of *Bacteroides* populations in stool were associated with disease in new-onset, untreated patients with RA. These observations and hypotheses were supported by a variety of studies on potential disease-causative pathogens in animal models. For example, possible involvement of bacterial cell wall components in the pathogenesis of RA was suggested by studies on the arthropathic properties of bacterial cell wall polymers such as peptidoglycan-polysaccharide (PG-PS) from *Streptococcus pyrogenes* (*S. pyrogenes*) [30–32], *S. faecium* and other normal flora [33]. Furthermore, striking effects of a variety of bacterial toxins, such as *Mycoplasma arthritidis* mitogen (MAM) [34, 35], *E. coli*-LPS [35, 36], and *Staphylococcus* super-antigen B (SEB) [37], in triggering and exacerbating arthritis were shown in mouse collagen-induced arthritis (CIA) and collagen antibody-induced arthritis (CAIA) models.

Likewise, increasing evidence suggests a possible link between RA and periodontal infectious diseases caused by *P. gingivalis* [38–40] and *Aggregatibacter actinomycetemcomitans* (*A. actinomycetemcomitans*) [41]. This prediction is supported by studies in a mouse CIA model. Indeed, *P. gingivalis* infection significantly facilitates the development and progression of arthritis, including bone absorption and cartilage destruction [42–45]. Based on these observations, it is assumed that some of these pathogens are implicated in enhancing and perpetuating inflammatory arthritis, leading to severe joint damage, such as rapid radiographic progression (RRP) observed in a subset of RA patients [46–49].

In addition to potential pathogenic agents, it is also important to consider possible disorders in the host that increase susceptibility to disease-causative pathogens. For example, if the immunological and mechanical barriers of the gastrointestinal tract are disturbed by intestinal disease, the aging process, or other factors, it is highly likely that abnormal amounts of mimic antigens and bacteria-derived pathogens will be absorbed from the gastrointestinal tract. In fact, it was clearly demonstrated that bacterial toxins absorbed from the intestine are directly implicated in the development of arthritis in animal models. For example, oral administration of *E. coli*-LPS relapses arthritis at a late stage of CIA [36]. Similarly, a single oral administration of *E. coli*-LPS increases serum IL-6 levels within 2 hours, and triggers CAI within 48 hours in mice older than 8 months, but not in young mice [50]. Furthermore, long term oral administration of heterologous type II collagen (CII), *E. coli*-LPS, or a combination of these induces mild, but chronic arthritis in DBA/1 mice [51]. More importantly, *E. coli*-LPS alone induces severe destructive arthritis in mice whose immune system was disturbed by a long term oral administration of a combination of indomethacin and ovinhibitor [51].

From this standpoint, we hypothesized that lowered immune defense function or dysbiosis in the intestinal and oral environments may be the fundamental disorder in autoimmune disease, and consequently, patients are consistently exposed to excessive amounts of a variety of potential disease-causative bacterial pathogens [50, 52]. To test this hypothesis, IgG and IgA antibody responses against pathogenic components of three strains of bacteria were determined for sera from two groups of RA patients, who met RRP criteria and non-RRP, and normal (NL) controls by ELISA using the ChonBlockTM buffer system, which prevents virtually all types of non-specific reactions involved the indirect ELISA as reported [13]. Antibody responses against individual pathogens were analyzed for potential correlation with serological disease maker levels and disease activity. In this study, we found that various types of bacterial pathogens, which overwhelm IgG and IgA antibody responses, may play critical pathological roles independently or concomitantly. Importantly, disease outcomes differ noticeably depending on the types of pathogens dominantly involved.

Patients and methods

RA patients and clinical assessment

Two hundred sixty-four patients with RA were enrolled in a clinical study to examine the effects of non-biological disease-modifying anti-rheumatic drugs (DMARDs) and biological DMARDs (biologics) on intestinal immunity in patients with RA at Katayama Orthopedic Rheumatology Clinic (Trial Registration Number: UMIN000012200 approved by Asahikawa Medical University Ethics Committee). The study purposes and procedures were provided in written form, and informed consent was obtained from all patients and normal subjects before performing any study procedure according the Declaration of Helsinki. Patients with RA were diagnosed based on the American College of Rheumatology (ACR) 1987 revised criteria [53]. Clinical disease activity was assessed by measuring tender 28 joint count (TJC28), swollen 28 joint count (SJC28), disease activity score of 28 joints with erythrocyte sedimentation rate (DAS28-ESR), and visual analogue scale of patients' global estimate for RA (pVAS). In addition, radiographic films of patients' hands and feet were assessed by modified total sharp score (mTSS) [54] at first serum collection, and compared with those obtained 1 year before, to determine the annual change of mTSS (Δ mTSS/y). The patients whose mTSS value increased ≥ 5 units over a 1 year period were classified as RRP, since the complete destruction of one joint during a 1 year period corresponds to an increase of 5 units [49, 54]. Furthermore, the presence of osteitis and precise osteitis area were determined by magnetic resonance imaging (MRI) (HITACHI 0.3T Open MRI system AIRIS Elite) using Short T1 Inversion Recovery

(STIR) method as reported [55]. In this test, we confirmed that moderate to severe osteitis was present in small joints (finger, wrist, foot) in these patients as described [56, 57]. In addition, in the patients with rapid progression of middle to large joints, regardless of the Δ mTSS/y of small joints, severe osteitis was observed at all small, middle and large joints. Therefore, these patients were included in the RRP group, because we considered that rapid progression of middle to large joints is one of the features of this disease phenotype, and should be distinguished from other RA phenotypes. Accordingly, it was confirmed that no patients in the non-RRP group have either apparent osteitis or destructive progression at middle to large joints.

Blood and serum samples

Blood and serum samples were collected from all patients under treatment with current drugs before switching to other therapeutics to obtain the baseline data; ESR, C-reactive protein (CRP), matrix metalloproteinase-3 (MMP3), IgM-RF (RF), lymphocytes, white blood cells (WBC), red blood cells (RBC) and hemoglobin (Hb). One aliquot of serum sample for each patient was kept at -20°C , and assayed for serum tumor necrosis factor- α (TNF- α), interleukin 6 (IL-6), and antibodies against bacterial pathogens and circular-citrullinated peptide (CCP). For the purposes of this study, the baseline data from the selected patients, who were not accompanied by severe comorbidity and currently not treated with biological therapeutics, were collected for analysis in this study. Consequently, complete baseline data were available for 54 patients with RRP and 101 patients with non-RRP as shown in Table 1. Sera from 38 healthy NL controls (Age: 42 ± 14) were used as a reference.

Antibody assay

IgG and IgA antibody responses to three bacterial pathogens, LPS from *E. coli* O-111B4 (*E. coli*-LPS) (ultra-pure *E. coli*-LPS, List Biological Laboratories, Campbell, CA), LPS from *P. gingivalis* (Pg-LPS) (InvivoGen, San Diego, CA), PG-PS from *S. pyogenes* (Lee Laboratories, Grayson, GA), and CCP synthesized at Biosynthesis (Lewisville, TX) were assayed by ELISA using the ChonBlockTM buffer system as described in detail [13, 58]. A detailed ELISA protocol is available in the attached supplemental information (S1 Appendix). Briefly, human sera from both patients with RA and NL controls were diluted with ChonBlockTM blocking/sample dilution buffer as follows: for IgG and IgA antibodies against *E. coli*-LPS: 1/1,000 & 1/1,000 (for both IgG and IgA), Pg-LPS: 1/10,000 & 1/500, PG-PS: 1/20,000 & 1/10,000, and IgG antibodies against CCP: 1/500. Antibody levels were determined by comparing to standards prepared from normal sera, and expressed as $\times 10^3$ units/ml. The highest dose of standard was adjusted to give an OD at 450nm of 2.8 ± 0.1 , and defined as 32 units/ml.

To determine the comprehensive immune function of individual patients, IgG and IgA antibody titers against individual pathogens were standardized by dividing with a mean antibody value of NL controls, and defined as IgG and IgA Antibody Index, respectively. The sum of index values calculated based on antibody levels against “*E. coli*-LPS and Pg-LPS” was defined as Index 1, “*E. coli*-LPS plus PG-PS” as Index 2, “*E. coli*-LPS plus Pg-LPS and PG-PS” as Index 3.

Cytokine assay

Serum levels of TNF- α and IL-6 were assayed by high sensitivity human ELISA kits (Quantikine HS ELISA, R&D Systems, MIN, USA), and shown as pg/ml.

Table 1. Baseline demographics of RA patients in RRP and Non-RRP groups.

		RRP (n = 54)	Non-RRP (n = 101)	Normal (n = 38)
Age		62±14	66±11	42±14*
Sex	Female/Male	50/4	86/15	16/22
Duration (Month)		48 (23–151)	116 (52–174)	/
Therapeutics	AU	0	2 (2.0%)	/
	BUC	5 (9.3%)	11 (10.9%)	/
	Celecoxib	0	1 (1.0%)	/
	LEF	0	3 (3.0%)	/
	Minocyclin	0	1 (1.0%)	/
	Mizoribine	1 (1.9%)	0	/
	MTX	38 (70.4%)	65 (64.4%)	/
	SASP	3 (5.6%)	16 (15.8%)	/
Disease Activity Score	TAC	7 (13.0%)	2 (2.0%)	/
	SJC28	5 (3–7.5)	5 (3–7)	/
	TJC28	2 (1–7)	5 (2–8)	/
	DAS28-ESR	4.4 ± 1.4	4.7 ± 1.2	/
Serological Disease Markers	pVAS	48 (26–66)	40 (30–65)	/
	CRP (mg/dl)	0.7 (0.1–1.9)	0.5 (0.1–1.9)	/
	ESR (mm/hour)	22.5 (12.8–44)	27 (12–46)	/
	IgM-RF (IU/ml)	84 (24.1–219)	51 (11.5–167)	/
Inflammatory Markers	Anti-CCP Ab (units/ml)	3.7 (0.8–8.7)	1.1 (0.2–20)	0.08 (0.047–0.099)
	TNF-α (pg/ml)	1.4 (0.9–2.2)	1.3 (1.1–1.9)	/
	IL-6 (pg/ml)	2.5 (1.0–8.2)	6.1(2.3–16.5)	/
Hematological Markers	MMP3 (ng/ml)	128 (74.6–240)	120 (64.4–217)	/
	RBC (10 ⁶ /μl)	415±32.6	417±48	/
	WBC (count/μl)	7211±2687	6478±1757	/
	Lymphocytes (count/μl)	1539 ± 481	1442 ± 476	/
Radiographic Assessment	Hb (g/dl)	12.3 ± 1.4	12.5 ± 1.4	/
	mTSS	37 (14–68)	23 (12–76)	/
	ΔmTSS/year	5.8 (2.2–11)**	0.0 (0–0.8)	/

*: P<0.05,

** : P< 0.0001 by Wilcoxon signed-rank test,

AU: Auranofin, BUC: Bucillamine, LEF: Leflunomide, MTX: Methotrexate, SASP: Salzosulfapyridine, TAC: Tacrolimus, RRP: Rapid radiographic progression, mTSS: modified total sharp scoring, ΔmTSS/y: annual change of mTSS during a 1 year. Clinical diagnostic data, which were distributed non-symmetrically, are shown as median (interquartile range), and others are shown as mean ± SD.

<https://doi.org/10.1371/journal.pone.0190588.t001>

Statistical analysis

Serum IgG and IgA antibody levels against all pathogens tested indicated non-normal distributions among NL, RRP and non-RRP groups. Accordingly, the statistical relationships between antibody levels, serological marker levels and disease activity were analyzed by Spearman’s non-parametric rank correlation analysis, and expressed as Spearman’s rank correlation coefficient “ρ” (JMP10 SAS Institute Inc., Cary, NC, USA). Similarly, the relationship between IgG and IgA antibody responses to individual pathogens was also determined by Spearman’s non-parametric rank correlation analysis. Data were shown as nominal p-values without adjustment for multiple testing. To demonstrate the relationship between two variables in log-log scale scattered graphs, 0 value was converted to 0.01 for practical convenience.

Results

1. Characterization of IgG and IgA antibody responses to bacterial pathogens in NL, RRP, and non-RRP groups

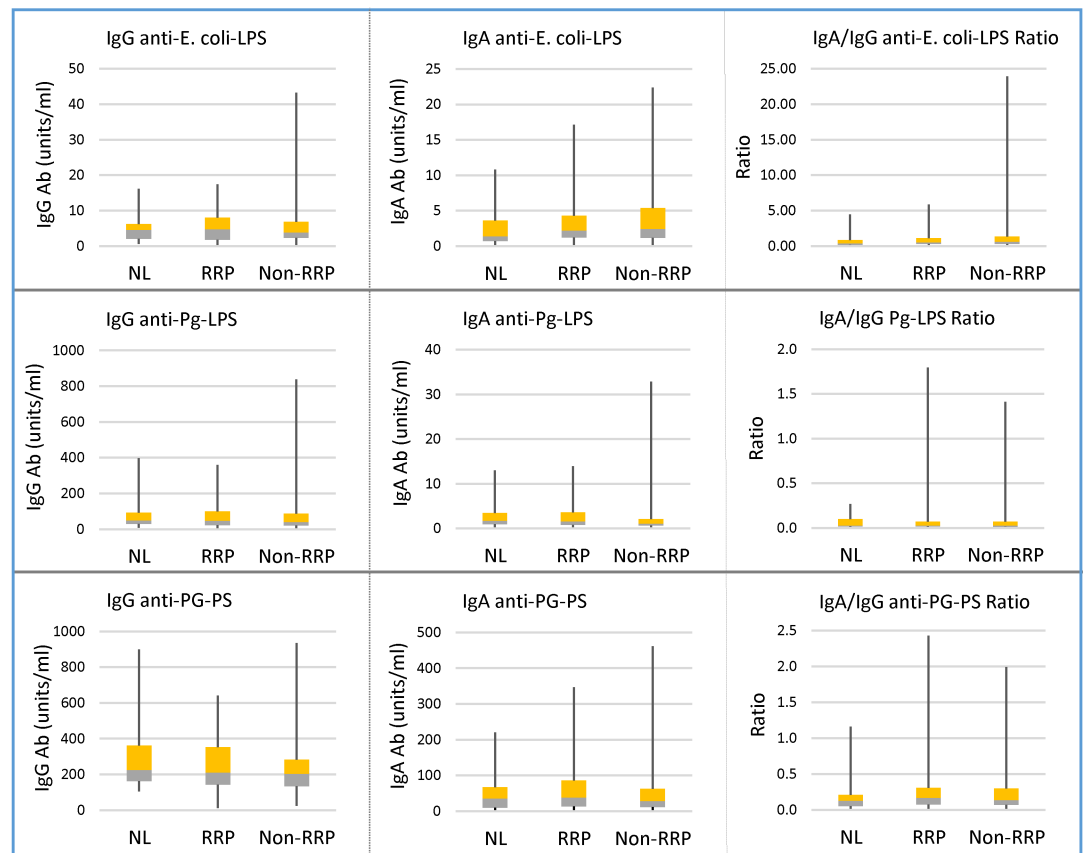
Clinical demographics of 54 RRP and 101 non-RRP patients were similar, and 38 (70.4%) patients with RRP and 65 (60.4%) patients with non-RRP were treated with methotrexate (MTX) (Table 1).

The mTSS values at the first serum collection (shown as median and interquartile range (IQR)), in the RRP group were 37 (14–68), slightly higher than 23 (17–76) in the non-RRP group, but was not statistically significant. However, the median (IQR) of disease duration in RRP group was 48 (23–151) months, and shorter than 116 (52–174) months in the non-RRP group, indicating joint destruction progresses more rapidly in the RRP group than in non-RRP group. As expected, the annual change of mTSS during a 1 year period (Δ mTSS/y) determined at joints of the hands and feet was 5.8 (2.2–11) in the RRP group, and significantly higher than the annual change value of 0.0 (0–0.8) in the non-RRP group ($p < 0.0001$). On the other hand, there was no difference in either the prevalence or antibody level of anti-CCP antibody between the RRP and the non-RRP groups. The median (IQR) of anti-CCP antibody titer was 3.7 (0.8–8.7) units/ml in RRP and 1.1 (0.2–20) units/ml in the non-RRP group compared to 0.08 (0.047–0.099) in NL controls. If sera contained more than 0.1 units/ml of anti-CCP antibody (higher than the 3rd quartile of NL controls), they were considered “positive” for anti-CCP antibody. Accordingly, 51/54 (94%) in the RRP group were positive for anti-CCP antibody, while 87/101 (84%) were positive in the non-RRP group. In addition, the average age of the NL group (42 ± 14 years old) was significantly younger than that of patients with RRP (62 ± 14) and non-RRP (66 ± 11). Despite of these differences, there were no significant differences in IgG and IgA antibody levels against all environmental pathogens and their IgA/IgG antibody ratio between NL, RRP and non-RRP groups as shown in Fig 1.

Firstly, to characterize the antibody responses to environmental pathogens, the possible effects of aging and disease duration on antibody levels were examined. Importantly, no age and no disease duration-associated changes in antibody levels were observed in NL, RRP, and non-RRP groups (S1 Fig and S2 Fig), with one exception. IgG anti-Pg-LPS antibody levels increased with age in NL group ($p = 0.0433$) (S1 Fig). These observations were confirmed by assaying IgG and IgA antibody levels against these pathogens in sera from 10 patients with RA treated with MTX for 13–113 months. Importantly, IgG and IgA antibody levels against all antigens assayed, except Pg-LPS, remained unchanged, regardless of the long-term treatment with MTX (S3 Fig). Based on these observations, it was considered that the antibody responses to environmental pathogens are unique to individuals, and generally remain at the same levels. Interestingly, apparent increases in IgG and especially IgA antibody responses to Pg-LPS were observed in these patients treated with MTX, indicating a possible adverse effect of MTX. To address this possibility, further detailed studies are required to reveal whether MTX affects oral and/or intestinal bacterial components.

To further characterize the antibody responses to environmental pathogens, the relationship between IgG and IgA antibody responses to individual pathogens was analyzed (S4 Fig). IgG and IgA antibody levels against *E. coli*-LPS, Pg-LPS and PG-PS positively correlated ($p < 0.05$) in all groups, indicating that IgG and IgA antibody production is orchestrated depending on the intestinal and oral environment of individuals. Importantly, no correlation was observed between IgG antibody levels against individual pathogens in the NL group. To the contrary, IgG anti-Pg-LPS antibody levels positively correlated with IgG anti-PG-PS antibody levels ($p < 0.0001$) in RRP, whereas IgG anti-*E. coli*-LPS antibody levels correlated with IgG anti-PG-PS antibody levels ($p = 0.0454$) in non-RRP. Similarly, no correlation was

a) IgG and IgA antibody levels against three types of bacterial pathogens



b) IgG and IgA antibody indexes

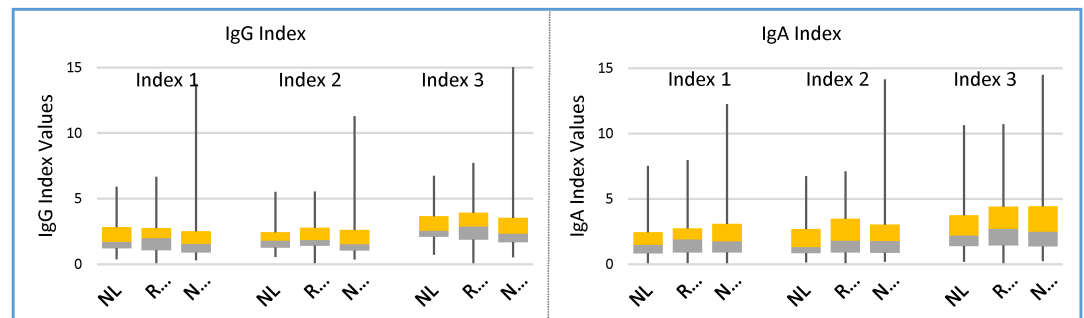


Fig 1. Comparison of antibody responses to potential pathogenic environmental agents between RA and NL controls. IgG and IgA antibody levels against *E. coli*-LPS, Pg-LPS and PG-PS were determined in sera from 38 NL controls, 54 patients with RRP and 101 patients with non-RRP (a). IgG and IgA antibody levels of individual patients were divided by the average values of NL controls, and shown as IgG and IgA index values (b). Data are shown as median and interquartile range (IQR). *E. coli*: *Escherichia coli*, Pg: *Porphyromonas gingivalis*, LPS: lipopolysaccharide, PG-PS: peptidoglycan polysaccharide from *Streptococcus pyogenes*, RRP: rapid radiographic progression, NOTE: Index 1: sum of anti-*E. coli*-LPS + anti-Pg-LPS, Index 2: sum of anti-*E. coli*-LPS + anti-PG-PS, Index 3: sum of anti-*E. coli*-LPS + anti-Pg-LPS + anti-PG-PS.

<https://doi.org/10.1371/journal.pone.0190588.g001>

observed between IgA antibody levels against individual pathogens in all groups, except IgA anti-Pg-LPS and IgA anti-PG-PS antibody levels correlated well in non-RRP ($p < 0.0063$). These observations indicated potential differences in the bacterial compositions of the digestive system between NL, RRP and non-RRP. Importantly, the positive correlation of IgG

antibody responses with certain pairs of pathogens in RA indicate a possibility that patients with low IgG antibody response against one pathogen have lower antibody response to other pathogens. Based on these basic features of antibodies, the comprehensive IgG and IgA antibody responses in individual patients were calculated, and expressed as IgG and IgA index 1–3, respectively. However, as shown in Fig 1B, no difference was observed in either IgG or IgA Indexes between NL and RA in this study employing a limited number of pathogenic agents.

2. Linkage of antibody responses to bacterial pathogens with disease markers

To understand the etiology of RA, it is important to consider that the disease process may begin many years before the clinical diagnosis of RA, and arthritis is just one distinctive symptom among multiple symptoms caused by systemic disorders. From this point of view, it is critical to identify the putative pathogens, which evoke disease markers, such as RF, ESR, CRP and anti-CCP antibody and cause hematological abnormality, and ultimately are implicated in developing autoimmune diseases.

At first, to clarify a possible involvement of environmental pathogens in RA, the relationship between antibody responses to three bacterial pathogens and serological disease marker levels was analyzed by Spearman's non-parametric rank correlation analysis. As shown in Fig 2A, RF levels in the RRP group inversely correlated with IgG antibody levels against *E. coli*-LPS ($p = 0.0028$), Pg-LPS ($p = 0.0083$) and PG-PS ($p = 0.0190$), and tended to correlate with IgA anti-*E. coli*-LPS ($p = 0.2186$) and anti-PG-PS ($p = 0.1415$) antibody levels. Consequently, RF levels correlated well with the IgA/IgG anti-Pg-LPS antibody ratio ($p = 0.0013$) and tended to correlate with the IgA/IgG anti-*E. coli*-LPS antibody ratio ($p = 0.0692$). On the other hand, no apparent relationship between RF and both IgG and IgA antibody levels against any pathogens was observed in the non-RRP group. However, it was notable that RF levels in this group apparently correlated with the IgA/IgG anti-PG-PS antibody ratio ($p = 0.0075$) as shown in Fig 2B.

Similarly, ESR in the RRP group tended to correlate inversely with IgG ($p = 0.1451$) and positively with IgA anti-Pg-LPS ($p = 0.0754$) antibody levels, and consequently correlated well with the IgA/IgG anti-Pg-LPS antibody ratio ($p = 0.0231$) (Fig 3A). On the other hand, ESR in non-RRP tended to be associated with lower IgG antibody responses to *E. coli*-LPS ($p = 0.0881$) and high IgA antibody responses to *E. coli*-LPS ($p = 0.1281$) and PG-PS ($p = 0.0220$), and consequently correlated well with the IgA/IgG anti-*E. coli*-LPS ($p = 0.0117$) and anti-PG-PS antibody ratio ($p = 0.0037$) (Fig 3B).

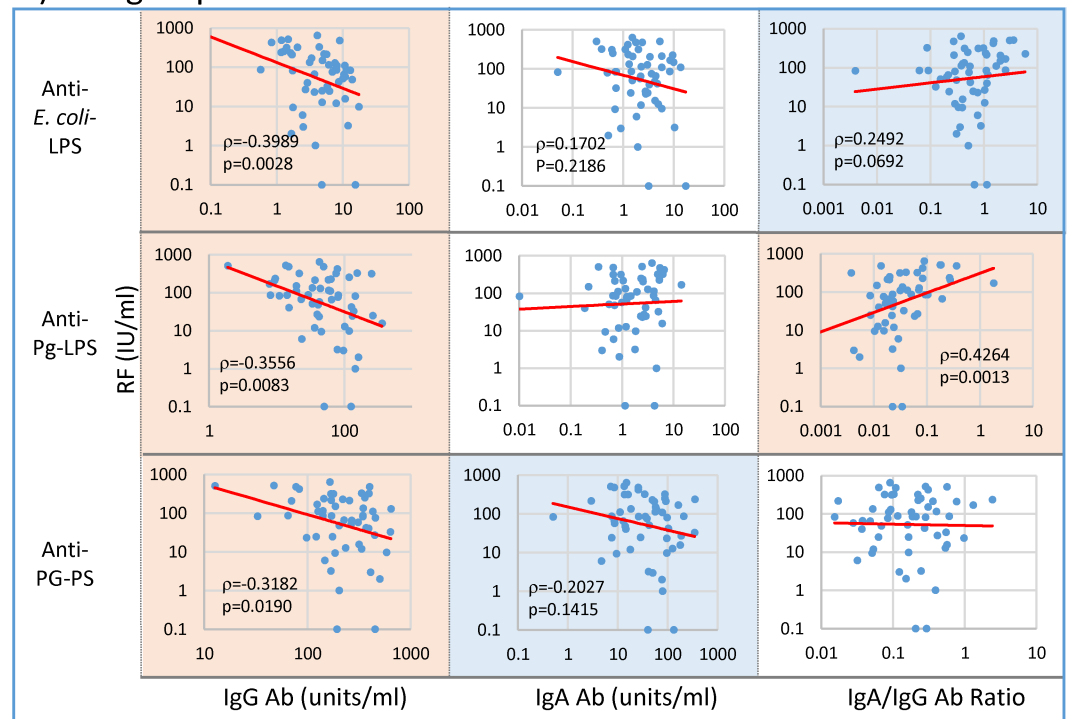
Like ESR, CRP levels correlated with the IgA/IgG anti-Pg-LPS ($p = 0.0397$) antibody ratio in RRP (Fig 4A), whereas these correlated with the IgA/IgG anti-PG-PS antibody ratio ($p = 0.0366$) in non-RRP (Fig 4B).

On the other hand, no apparent correlation was observed between anti-CCP antibody levels and antibody responses to any pathogens in both RRP and non-RRP, although anti-CCP antibody levels tended to inversely correlate with IgG anti-*E. coli*-LPS ($p = 0.0706$), and positively correlate with IgA anti-PG-PS ($p = 0.0697$) and the IgA/IgG anti-PG-PS ratio ($p = 0.0599$) in non-RRP (data not shown). These observations indicate that anti-CCP antibody production is not directly influenced by these pathogens tested, and likely to be elicited by a combination of multiple pathogens as discussed later, or by other pathogens such as leukotoxin A as suggested by Konig et al [59].

3. Linkage of antibody responses to bacterial pathogens with severity of arthritis

The observations described above indicate a possibility that a variety of environmental pathogens, which overwhelm the host's antibody responses for an extended period of time, may play

a) RRP group



b) Non-RRP group

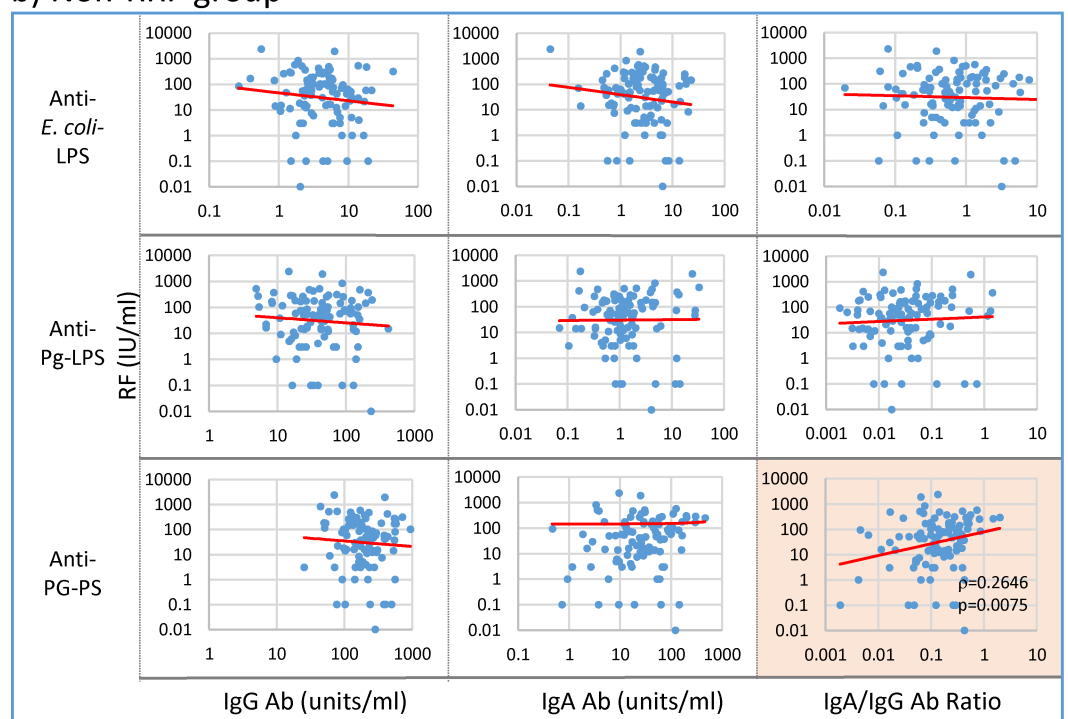
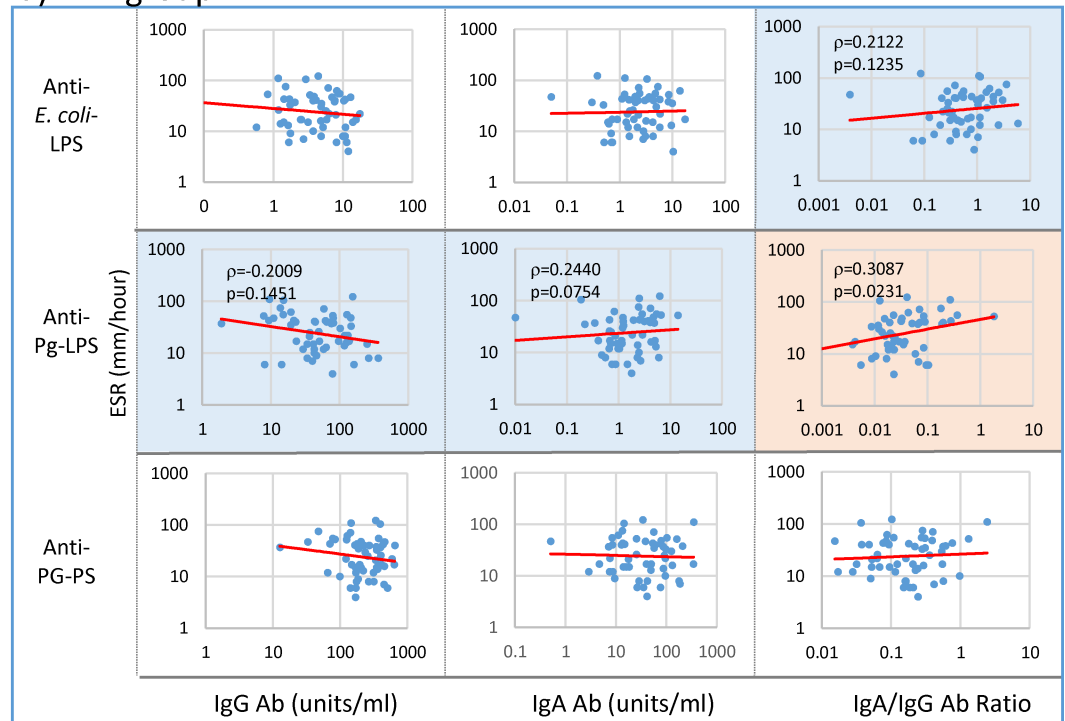


Fig 2. Linkage of RF with IgG and IgA antibody responses to bacterial pathogens in RA patients. IgG and IgA antibody levels against individual pathogens and their IgA/IgG antibody ratio were analyzed for possible correlation with RF levels in 54 patients with RRP (a) and 101 patients with non-RRP (b) by Spearman's rank correlation coefficient analysis. NOTE: Pink: significant correlation at $p < 0.05$, Blue: trending toward correlation at $0.05 \leq p < 0.15$, No color: no correlation.

<https://doi.org/10.1371/journal.pone.0190588.g002>

a) RRP group



b) Non-RRP group

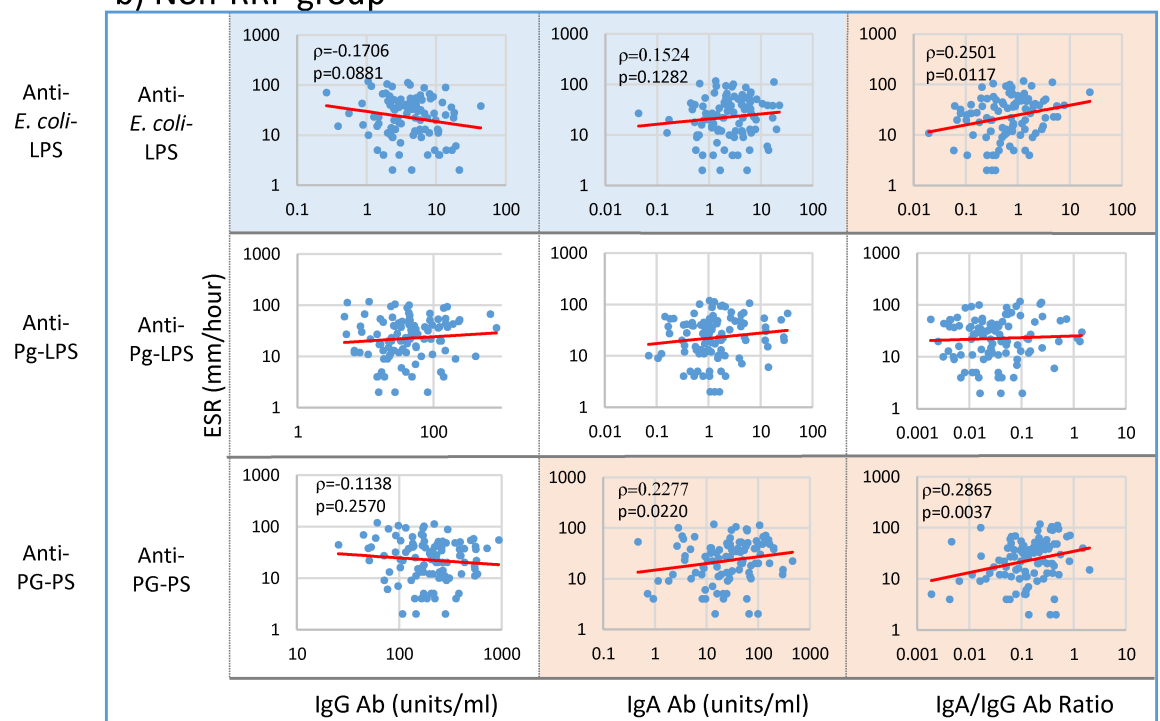
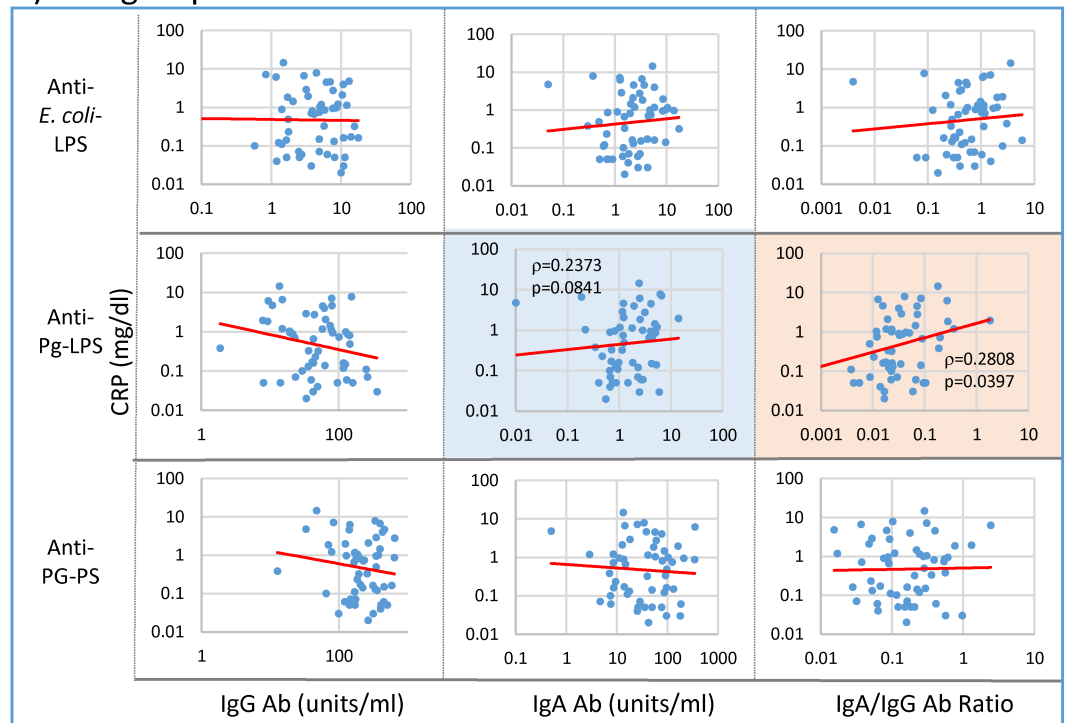


Fig 3. Linkage of ESR with IgG and IgA antibody responses to bacterial pathogens in RA patients. IgG and IgA antibody levels against individual pathogens and their IgA/IgG antibody ratio were compared with ESR in 54 patients with RRP (a) and 101 patients with non-RRP (b) by Spearman's rank correlation coefficient analysis. NOTE: Pink: significant correlation at $p < 0.05$, Blue: trending toward correlation at $0.05 \leq p < 0.15$, No color: no correlation.

<https://doi.org/10.1371/journal.pone.0190588.g003>

a) RRP group



b) Non-RRP group

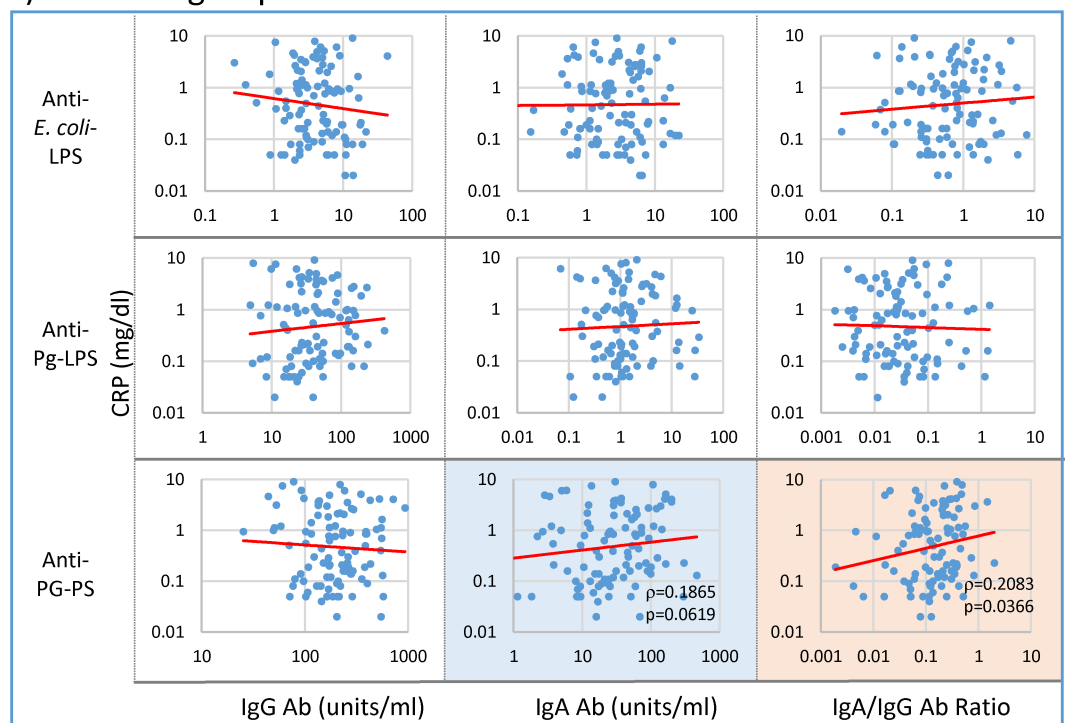


Fig 4. Linkage of CRP with IgG and IgA antibody responses to bacterial pathogens in RA patients. IgG and IgA antibody levels against individual pathogens and their IgA/IgG antibody ratio were compared with CRP levels in 54 patients with RRP (a) and 101 patients with non-RRP (b) by Spearman's rank correlation coefficient analysis. NOTE: Pink: significant correlation at $p < 0.05$, Blue: trending toward correlation at $0.05 \leq p < 0.15$, No color: no correlation.

<https://doi.org/10.1371/journal.pone.0190588.g004>

essential roles in evoking and increasing disease marker levels, and consequently perpetuating and aggravating inflammatory arthritis. To examine this possibility, we analyzed potential association between IgG and IgA antibody levels against individual pathogens and severity of arthritis by Spearman's non-parametric rank correlation analysis. As shown in Fig 5A, DAS28-ESR values correlated specifically with IgA anti-Pg-LPS antibody levels ($p = 0.0042$) and the IgA/IgG anti-Pg-LPS antibody ratio ($p < 0.0001$) in the RRP group as well as RF (Fig 2A), ESR (Fig 3A) and CRP (Fig 4A) levels. Importantly, SJC28 and TJC28 correlated with IgA/IgG anti-Pg-LPS ratio ($p = 0.0042$ and $p = 0.0025$), and pVAS scores correlated with IgA anti-Pg-LPS antibody levels ($p = 0.0198$) in the RRP group (data not shown).

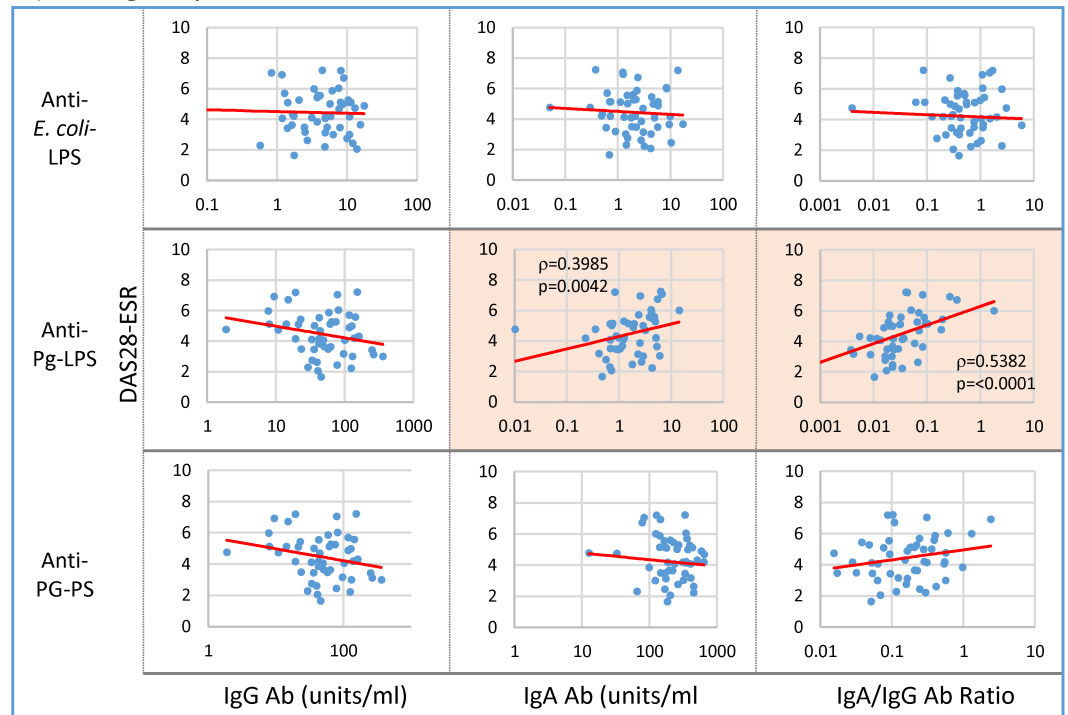
On the other hand, DAS28-ESR values in the non-RRP group positively correlated with the IgA/IgG anti-*E. coli*-LPS antibody ratio ($p = 0.0149$), but did not correlate with either anti-Pg-LPS or anti-PG-PS antibodies as shown in Fig 5B. However, pVAS score inversely correlated with IgG anti-Pg-LPS antibody levels ($p = 0.0006$) and positively correlated with the IgA/IgG anti-Pg-LPS antibody ratio ($p = 0.0040$) (data not shown), indicating that Pg-LPS also contributes to pathogenesis in the non-RRP group. Importantly, no correlation was observed between IgG and IgA anti-PG-PS antibody levels and the severity of arthritis in this group (Fig 5B), even though PG-PS seems to contribute to evoking RF, ESR and CRP (Figs 2B, 3B & 4B). These discrepancies indicate that multiple pathogens, which have unique pathogenic effects, play different pathological roles independently or concomitantly in individual patients with RA, and may affect disease outcomes with distinct disease phenotypes, such as RRP and non-RRP.

4. Linkage of serological disease maker levels with severity of arthritis

To obtain a clear picture of the etiopathogenesis of RA, we investigated the relationship of serological disease marker (RF, ESR, CRP and anti-CCP antibody) levels with arthritis severity (SJC28, TJC28, DAS28-ESR and pVAS), and hematological maker (lymphocytes, WBC and Hb) levels (Figs 6–9). In the RRP group, RF levels, which inversely correlated with IgG anti-*E. coli*-LPS, Pg-LPS and PG-PS, inversely correlated with IgG index 1–3 values as expected (Fig 6). Importantly, RF levels correlated well with severity of arthritis (SJC28, TJC28, DAS28-ESR and pVAS), serological disease maker (ESR, CRP, anti-CCP antibody) and inflammatory marker (TNF, MMP3) levels in RRP as shown in Fig 6. These observations indicate that pathogens evoking RF may directly contribute to triggering and exacerbating inflammatory reaction in the RRP group. On the other hand, RF levels in the non-RRP group did not correlate with either IgG or IgA index values, and furthermore either arthritis or inflammatory marker levels, although RF levels correlated well with ESR, CRP, and anti-CCP antibody levels (Fig 6). These data indicate that different pathogens or different combinations of pathogens are involved in evoking RF in the RRP and non-RRP groups. Notably, RF levels correlated well with anti-CCP antibody levels in both RRP and non-RRP groups, regardless of the significant differences in the profiles of RF and the progression of arthritis between the two groups. This indicates that RF may trigger CCPs and subsequent anti-CCP antibody production, regardless of the phenotype of disease, as suggested by Carmona-Rivera et al. [60].

On the other hand, ESR tended to correlate with IgA index values rather than IgG index values in both RRP and non-RRP (Fig 7). Importantly, like RF, ESR correlates with arthritis (SJC28, TJC28, DAS28-ESR and pVAS) scores and inflammatory maker (TNF and MMP-3) levels in the RRP group as shown in Fig 7, indicating that Pg-LPS, which contributes to increasing ESR (Fig 3), may also be implicated in developing arthritis in the RRP group. Similarly, ESR in the non-RRP group also correlated well with DAS28-ESR, but did not correlate with other arthritis marker levels in this group. This indicates that *E. coli*-LPS, PG-PS or both,

a) RRP group



b) Non-RRP group

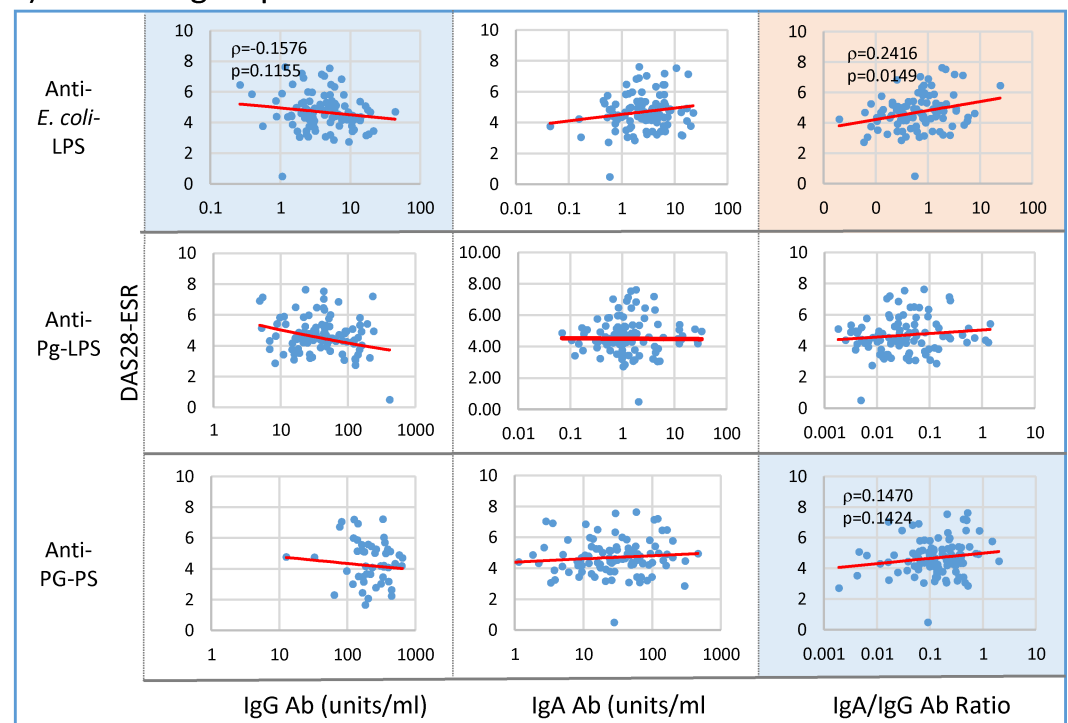


Fig 5. Linkage of DAS28-ESR with IgG and IgA antibody responses to bacterial pathogens in RA patients. IgG and IgA antibody levels against individual pathogens and their IgA/IgG antibody ratio were compared with DAS28-ESR score values in 54 patients with RRP (a) and 101 patients with non-RRP (b), using Spearman's rank correlation coefficient analysis. NOTE: Pink: significant correlation at $p<0.05$, Blue: trending toward correlation at $0.05\leq p<0.15$, No color: no correlation.

<https://doi.org/10.1371/journal.pone.0190588.g005>

Variables	RRP			Non-RRP		
	ρ Value	P Value	Plot	ρ Value	P Value	Plot
IgG Index 1	-0.4609	0.0005*		-0.1016	0.3122	
IgG Index 2	-0.4422	0.0008*		-0.1244	0.2151	
IgG Index 3	-0.5064	<.0001*		-0.0816	0.4173	
IgA Index 1	0.0135	0.9226		0.0640	0.5248	
IgA Index 2	-0.1909	0.1668		0.0481	0.6332	
IgA Index 3	-0.1098	0.4294		0.1429	0.1539	
SJC28	0.4661	0.0004*		0.1940	0.0519	
TJC28	0.3503	0.0101*		-0.0048	0.9618	
DAS28-ESR	0.5300	<.0001*		0.1429	0.1541	
pVAS	0.3299	0.0158*		-0.1170	0.2441	
ESR	0.4325	0.0011*		0.3028	0.0021*	
CRP	0.4116	0.0020*		0.2197	0.0273*	
RF	/	/		/	/	
Anti-CCP	0.4146	0.0018*		0.5707	<.0001*	
IL-6	0.2157	0.2438		0.1482	0.1868	
TNF	0.4660	0.0082*		0.1112	0.3261	
MMP 3	0.2950	0.0304*		0.0612	0.5430	
Lymp	0.1302	0.3830		-0.0590	0.5677	
WBC	0.1801	0.1926		0.1548	0.1241	
Hb	-0.0553	0.6911		0.0977	0.3334	

Fig 6. Relationship of RF with antibody response functions and clinical maker levels in patients with RRP and non-RRP. RF levels were compared with IgG and IgA index values, severity of arthritis, disease marker levels, serum cytokine levels, and hematological values in 54 patients with RRP and 101 patients with non-RRP, using Spearman's rank correlation coefficient analysis. NOTE: Plot: Visual display for positive and negative "p" value of Spearman correlation coefficient. Cells highlighted with yellow indicate significant correlation at $p < 0.05$. Index 1: sum of anti-*E. coli*-LPS + anti-Pg-LPS, Index 2: sum of anti-*E. coli*-LPS + anti-PG-PS, Index 3: sum of anti-*E. coli*-LPS + anti-Pg-LPS + anti-PG-PS.

<https://doi.org/10.1371/journal.pone.0190588.g006>

rather than Pg-LPS, are implicated in the severity of arthritis in the non-RRP group. Due to the possible difference in the pathogens involved in evoking ESR in the RRP and non-RRP groups, a significant difference was observed in the ESR profiles between the RRP and non-RRP groups; ESR did not correlate with anti-CCP antibody levels ($p = 0.7819$) in the RRP group, but correlated well ($p = 0.0048$) in the non-RRP group. Importantly, ESR correlated well with WBC in both RRP and non-RRP, indicating that the pathogens which evoke ESR may contribute to acute inflammatory reaction regardless of RA phenotype (Fig 7).

Similar patterns to those observed in ESR were observed in the relationship between CRP levels and arthritis scores and inflammatory marker levels, including WBC and Hb in both RRP and non-RRP groups (Fig 8). This indicates that the pathogens that increase ESR also contribute to increasing CRP levels in RA.

Furthermore, Hb levels were inversely correlated with ESR and CRP levels, but not with RF levels in both RRP and non-RRP groups (Figs 7 & 8), indicating pathogens that evoke ESR and CRP exert an adverse effect on Hb levels in RA. In fact, Hb levels strongly correlated with IgA anti-*E. coli*-LPS antibody levels ($P = 0.0005$) and IgA/IgG anti-*E. coli* antibody ratio ($p = 0.0181$) in the non-RRP group (data not shown). On the other hand, no correlation was observed between Hb levels and either IgG or IgA antibody responses to any pathogens in the RRP group. However, it is likely that Pg-LPS alone or in combination with *E. coli*-LPS may contribute to reducing Hb levels in the RRP group. This is evidenced by the fact that Hb levels were tightly correlated with ESR and CRP levels, which are linked to low IgG and high IgA antibody responses to Pg-LPS in this group.

Unlike these classic disease makers, anti-CCP antibody levels, which did not correlate with antibody responses to any pathogens, did not correlate with either IgG or IgA Index values in

Variables	RRP			Non-RRP		
	ρ Value	P Value	Plot	ρ Value	P Value	Plot
IgG Index 1	-0.2221	0.1066		-0.0536	0.5947	
IgG Index 2	-0.1645	0.2344		-0.2017	0.0431*	
IgG Index 3	-0.2594	0.0582		-0.0808	0.4217	
IgA Index 1	0.2875	0.0350*		0.2321	0.0195*	
IgA Index 2	0.0777	0.5767		0.2033	0.0414*	
IgA Index 3	0.1955	0.1566		0.2471	0.0127*	
SJC28	0.4857	0.0002*		0.1623	0.1048	
TJC28	0.4304	0.0013*		-0.1542	0.1236	
DAS28-ESR	0.7155	<.0001*		0.5802	<.0001*	
pVAS	0.5036	0.0001*		-0.0633	0.5291	
ESR	/	/		/	/	
CRP	0.7735	<.0001*		0.7325	<.0001*	
RF	0.4325	0.0011*		0.3028	0.0021*	
Anti-CCP	0.0386	0.7819		0.2785	0.0048*	
IL-6	0.5991	0.0004*		0.4690	<.0001*	
TNF	0.5527	0.0013*		0.1076	0.3421	
MMP 3	0.6447	<.0001*		0.4304	<.0001*	
Lymp	0.2196	0.1381		-0.1087	0.2916	
WBC	0.3590	0.0077*		0.3078	0.0018*	
Hb	-0.6255	<.0001*		-0.3144	0.0014*	

Fig 7. Relationship of ESR with antibody response functions and clinical marker levels in patients with RRP and non-RRP. ESR values were compared with IgG and IgA index values, severity of arthritis, disease marker levels, serum cytokine levels, and hematological values in 54 patients with RRP and 101 patients with non-RRP, using Spearman's rank correlation coefficient analysis. NOTE: Plot: Visual display for positive and negative "p" value of Spearman correlation coefficient. Cells highlighted with yellow indicate significant correlation at $p < 0.05$. Index 1: sum of anti-*E. coli*-LPS + anti-Pg-LPS, Index 2: sum of anti-*E. coli*-LPS + anti-PG-PS, Index 3: sum of anti-*E. coli*-LPS + anti-Pg-LPS + anti-PG-PS.

<https://doi.org/10.1371/journal.pone.0190588.g007>

both RRP and non-RRP groups, but correlated well with RF levels in both groups (Fig 9). Although anti-CCP antibody levels did not correlate with DAS28-ESR and inflammatory marker levels (IL-6, TNF and MMP-3) unlike RF, ESR and CRP, but correlated with SJC28 ($p = 0.0180$) in the RRP group, and IL-6 ($p = 0.0002$) in the non-RRP group.

These data indicate that anti-CCP antibodies may not play a dominant arthritogenic role, but are implicated in joint tissue damage at some stage of the inflammatory process. A remarkable difference between the RRP and non-RRP groups was that anti-CCP antibody levels did not correlate with CRP and ESR levels in RRP (Fig 10A), but closely correlated with these in the non-RRP group as shown Fig 10B. These differences indicate that bacterial pathogenic components such as Pg-LPS, which are assumed to dominantly contribute to increasing CRP and ESR in the RRP group, are less likely to be involved in eliciting anti-CCP antibody in the RRP group. On the other hand, *E. coli*-LPS, PG-PS or both combined, which affect CRP and ESR levels in the non-RRP group, may contribute to eliciting anti-CCP antibody by enhancing neutrophil extracellular traps (NETs) formation or activating synovial cells [60] as discussed later.

Taken together, we concluded that various types of bacterial pathogens, which exert unique pathological effects, may be actively involved in evoking and aggravating disease maker levels and disease activity independently and collectively, and play critical roles in the pathogenesis of RA as summarized in Fig 11.

Discussion

The most important finding in this study is that IgG antibody responses to environmental pathogens inversely correlate or tend to correlate with serological disease marker levels and

Variables	RRP			Non-RRP		
	ρ Value	P Value	Plot	ρ Value	P Value	Plot
IgG Index 1	-0.1422	0.3050		-0.0567	0.5732	
IgG Index 2	-0.0294	0.8327		-0.1140	0.2563	
IgG Index 3	-0.1736	0.2094		-0.0754	0.4536	
IgA Index 1	0.3450	0.0106*		0.0572	0.5701	
IgA Index 2	0.1505	0.2774		0.0959	0.3402	
IgA Index 3	0.2336	0.0891		0.1183	0.2385	
SJC28	0.4815	0.0003*		0.3149	0.0013*	
TJC28	0.3956	0.0034*		-0.0077	0.9388	
DAS28-ESR	0.5747	<.0001*		0.5292	<.0001*	
pVAS	0.4453	0.0008*		0.0225	0.8236	
ESR	0.7735	<.0001*		0.7325	<.0001*	
CRP	/	/		/	/	
RF	0.4116	0.0020*		0.2197	0.0273*	
Anti-CCP	-0.0838	0.5470		0.2583	0.0091*	
IL-6	0.6001	0.0004*		0.4889	<.0001*	
TNF	0.4588	0.0094*		0.0924	0.4148	
MMP 3	0.7443	<.0001*		0.6230	<.0001*	
Lymp	0.1748	0.2399		-0.0292	0.7776	
WBC	0.4219	0.0015*		0.3979	<.0001*	
Hb	-0.5956	<.0001*		-0.2742	0.0058*	

Fig 8. Relationship of CRP with antibody response functions and clinical marker levels in patients with RRP and non-RRP. CRP levels were compared with IgG and IgA index values, severity of arthritis, disease marker levels, serum cytokine levels, and hematological analytical values in 54 patients with RRP and 101 patients with non-RRP, using Spearman's rank correlation coefficient analysis. NOTE: Plot: Visual display for positive and negative " ρ " value of Spearman correlation coefficient. Cells highlighted with yellow indicate significant correlation at $p < 0.05$. Index 1: sum of anti-*E. coli*-LPS + anti-Pg-LPS, Index 2: sum of anti-*E. coli*-LPS + anti-PG-PS, Index 3: sum of anti-*E. coli*-LPS + anti-Pg-LPS + anti-PG-PS.

<https://doi.org/10.1371/journal.pone.0190588.g008>

severity of arthritis, whereas IgA antibody levels and the IgA/IgG antibody ratio positively correlate or tend to correlate with those marker levels among the patients with RA despite no apparent defect in the antibody response function as shown in Fig 1. More specifically, IgG anti-*E. coli*-LPS, Pg-LPS and PG-PS antibody levels inversely correlated with RF levels, whereas the IgA/IgG anti-Pg-LPS antibody ratio positively correlated not only with RF levels, but also ESR, CRP and DAS28-ESR in the RRP group (Figs 2A, 3A, 4A and 5A). In contrast, no apparent relationship was observed between IgG antibody levels and either serological disease marker levels or severity of arthritis in the non-RRP group, but IgA anti-*E. coli*-LPS and PG-PS antibody levels and the IgA/IgG anti-*E. coli*-LPS and anti-PG-PS antibody ratios positively correlated or tended to correlate with those marker levels (Figs 2B, 3B, 4B and 5B).

One of the unique features of the mucosal immune system is the production of a large amount of non-specific poly-reactive IgA and antigen-specific IgA antibodies, which prevent the penetration or translocation of pathogenic substances such as bacteria and their components into the lamina propria and the blood stream [61, 62]. On the other hand, antigen-specific IgG is produced by B-cells stimulated by antigens escaped from the IgA barrier, and may play a critical role in protecting the host from pathogens that enter the body. Therefore, we assume that the correlation between IgA/IgG antibody ratio and disease activity in RA, in spite of no apparent defect in either IgA or IgG antibody responses to the pathogens, indicates that RA patients are exposed to excessive amounts of pathogens, which overwhelm IgA and IgG antibody defense functions.

Taken together, we speculate that a fundamental disorder in RA may be dysbiosis in the intestinal tract and oral cavity or dysfunction of the gastrointestinal mucosal barrier system rather than abnormality in immune function. However, our current findings do not prove that

Variables	RRP			Non-RRP		
	ρ Value	P Value	Plot	ρ Value	P Value	Plot
IgG Index 1	-0.1924	0.1634		-0.0446	0.6575	
IgG Index 2	-0.1735	0.2097		-0.1592	0.1118	
IgG Index 3	-0.2328	0.0903		-0.0280	0.7810	
IgA Index 1	0.0182	0.8962		0.1421	0.1564	
IgA Index 2	-0.0767	0.5817		0.0708	0.4820	
IgA Index 3	-0.0540	0.6981		0.1543	0.1235	
SJC28	0.3239	0.0180*		0.1056	0.2934	
TJC28	0.1561	0.2643		-0.0781	0.4374	
DAS28-ESR	0.2253	0.1157		0.1050	0.2960	
pVAS	0.1122	0.4237		-0.0810	0.4207	
ESR	0.0386	0.7819		0.2785	0.0048*	
CRP	-0.0838	0.5470		0.2583	0.0091*	
RF	0.4146	0.0018*		0.5707	<.0001*	
Anti-CCP	/	/		/	/	
IL-6	0.1694	0.3623		0.4019	0.0002*	
TNF	0.0974	0.6022		0.1407	0.2131	
MMP 3	-0.0257	0.8537		0.1657	0.0978	
Lymp	-0.0054	0.9711		0.0602	0.5602	
WBC	-0.1066	0.4429		0.2358	0.0182*	
Hb	0.0818	0.5567		0.1057	0.2951	

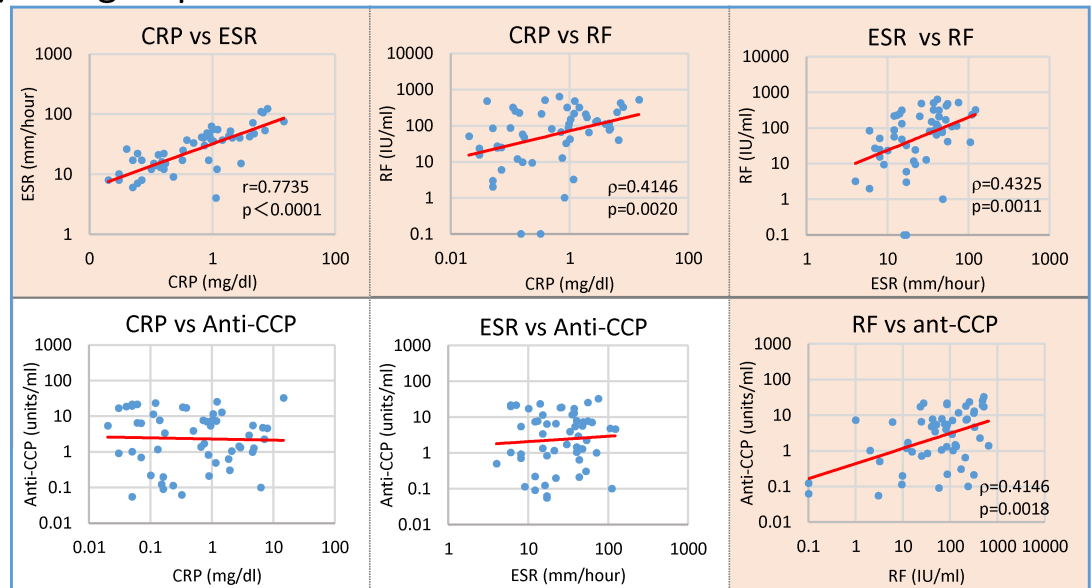
Fig 9. Relationship of anti-CCP antibody levels with antibody response functions and clinical marker levels in patients with RRP and non-RRP. Anti-CCP antibody levels were compared with IgG and IgA index values, severity of arthritis, disease marker levels, serum cytokine levels, and hematological analytical values in 54 patients with RRP and 101 patients with non-RRP, using Spearman’s rank correlation coefficient analysis. NOTE: Plot: Visual display for positive and negative “ ρ ” value of Spearman correlation coefficient. Cells highlighted with yellow indicate significant correlation at $p < 0.05$. Index 1: sum of anti-*E. coli*-LPS + anti-Pg-LPS, Index 2: sum of anti-*E. coli*-LPS + anti-PG-PS, Index 3: sum of anti-*E. coli*-LPS + anti-Pg-LPS + anti-PG-PS.

<https://doi.org/10.1371/journal.pone.0190588.g009>

individual pathogens tested in this study actually play critical pathological roles in RA. For example, there is no evidence yet that Pg-LPS actually evokes RF, ESR and CRP, and exacerbates arthritis in the RRP group. In this aspect, it is also important to take into consideration that antibody levels to individual pathogens may reflect the immune defense function not only to the pathogens tested, but also represent the overall immune defense function against related pathogens. We speculate that anti-Pg-LPS antibody levels may reflect the immune defense function not only to Pg-LPS, but also to *P. givalis* and other periodontal bacteria, and their pathogenic components. Similarly, anti-*E. coli*-LPS antibody response reflects immune defense function against not only *E. coli*-LPS, but also to *E. coli* and other intestinal bacteria, and their pathogenic components. Therefore, further studies are required to clarify the pathogenic effects of individual pathogens and their combinations in conjunction with studies on dysbiosis of the intestinal tract and oral cavity.

Regarding the etiological significance of RF, an apparent difference was observed between the RRP and non-RRP groups. RF levels correlate well with other serological disease markers, arthritis score, and inflammatory marker levels in the RRP group, but not in the non-RRP group (Fig 6), indicating possible differences in the types of pathogens dominantly involved in evoking RF in RRP and non-RRP groups as shown in Fig 2. It was reported that RF production is triggered by serum immune complexes and antigen-primed T-cells [63]. However, our data indicate that a variety of bacterial pathogens, such as *E. coli*-LPS, Pg-LPS and PG-PS, may directly contribute to evoking RF in RA as well as leukotoxin A produced by *A. actinomycetem-comitans* [59]. An additional intriguing finding is that ESR and CRP values correlate well not only with severity of arthritis and inflammatory marker levels, but also with Hb levels in both RRP and non-RRP groups (Figs 7 & 8). This evidence indicates that the pathogens that

a) RRP group



b) non-RRP group

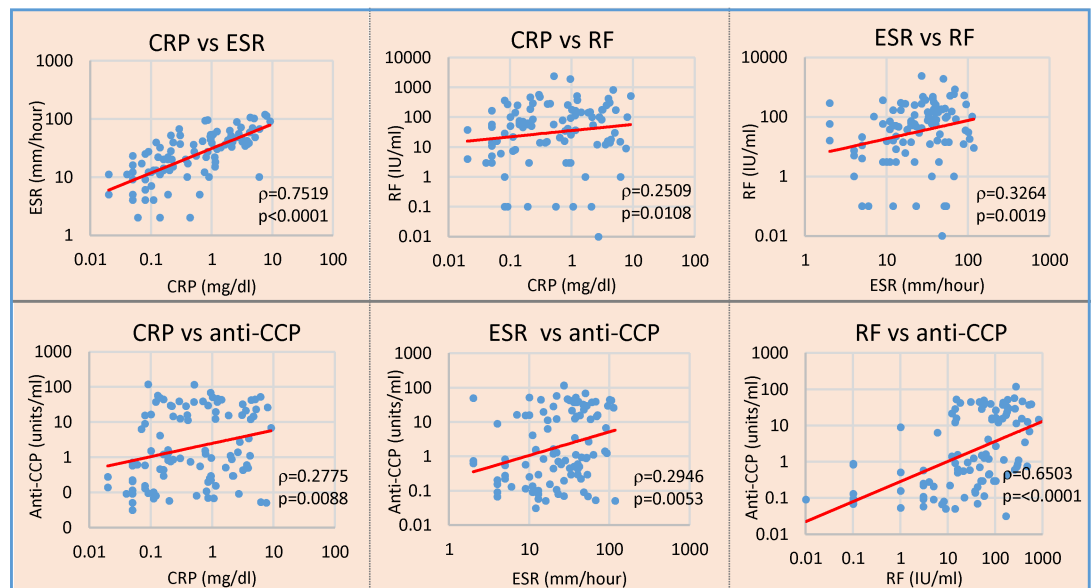


Fig 10. Differences in the relationships between individual disease markers in the RRP and non-RRP groups. Potential correlations between individual disease marker levels in 54 patients with RRP and 101 patients with non-RRP were confirmed by Spearman's rank correlation coefficient analysis. NOTE: Pink: significant correlation at $p < 0.01$, No color: no correlation.

<https://doi.org/10.1371/journal.pone.0190588.g010>

contribute to evoking ESR and CRP have an adverse influence on Hb levels, whereas the pathogens that evoke RF do not. These results again indicate that multiple pathogens with different pathological effects are involved independently and concomitantly in the pathogenesis of RA. Consequently, the clinical phenotype will vary depending on the dominant pathogens and the combinations of pathogens as shown in Fig 11.

In contrast to these classic serological disease markers, the significance of anti-CCP antibody in the pathogenesis of RA remains unknown, since anti-CCP antibody levels do not

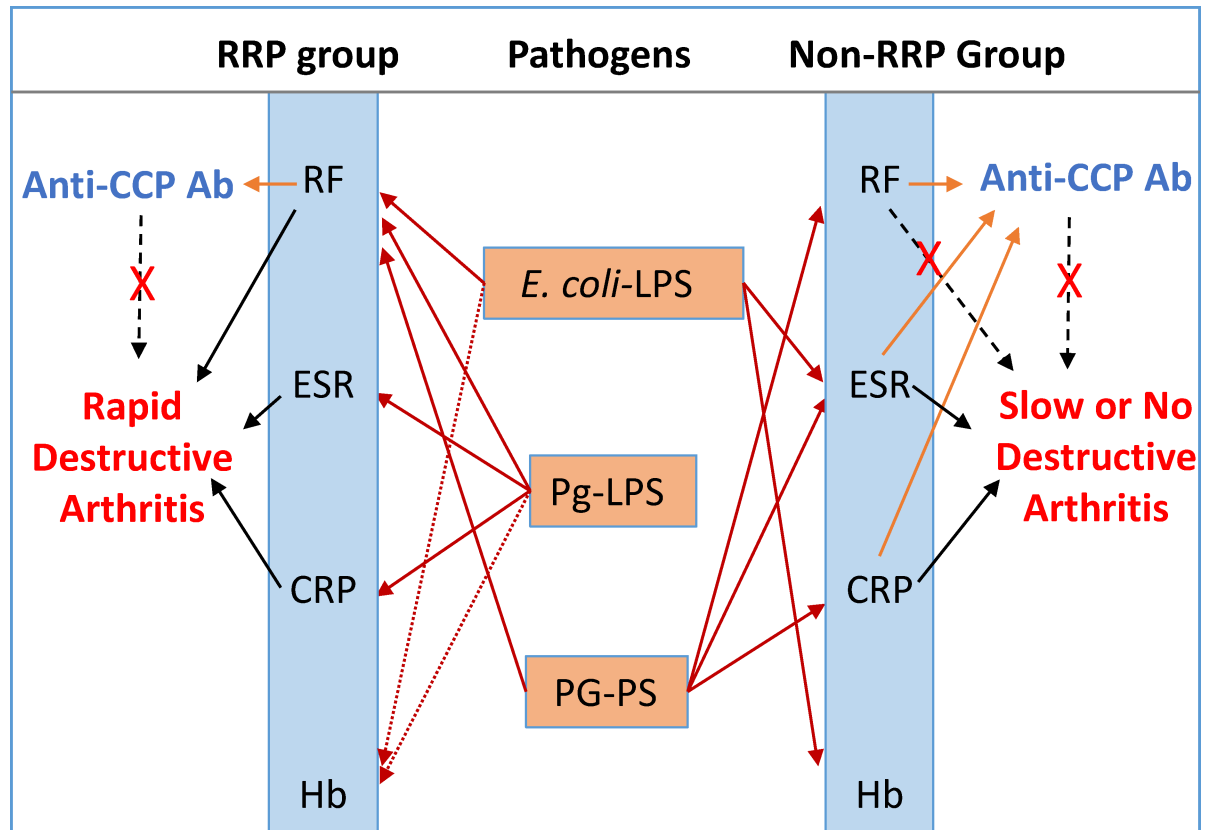


Fig 11. Multiple bacterial pathogens are implicated in evoking serological disease markers and consequently aggravating disease activity in the RRP and non-RRP groups. Low IgG antibody responses to *E. coli*-LPS, Pg-LPS and PG-PS are linked to RF, ESR and CRP levels in RRP. Among these putative pathogens, Pg-LPS and related pathogens derived from oral bacteria may play critical pathological roles in the RRP group. On the other hand, *E. coli*-LPS, PG-PS and other related pathogenic components, instead of Pg-LPS, may contribute to increasing RF, ESR and CRP levels in non-RRP. Anti-CCP antibody levels clearly correlate with RF in both RRP and non-RRP groups, but are not linked to severity of arthritis. NOTE: Arrows with solid line: Linkage, Arrows with dotted line: Possible linkage, Dashed line with X: No apparent linkage.

<https://doi.org/10.1371/journal.pone.0190588.g011>

correlate either with antibody levels against any pathogens tested or severity of arthritis in both RRP and non-RRP groups (Fig 9). Based on the assumption that RA is linked to periodontitis, it is widely believed that *P. gingivalis* peptidylarginine deiminase (PAD) is implicated in the autoimmunity of RA by creating mimic antigen, CCP, by autocitrullination [64–66]. Contrary to the *P. gingivalis* PAD hypothesis, König et al. [67] reported that *A. actinomycetemcomitans*, which releases leukotoxin A, mediates CCP production, but *P. gingivalis* and other periodontal pathogens do not. Furthermore, Carmona-Rivera et. al. [60] paid great attention to NETs formed by stimulation with IgM-RF stimulation [68], the source of CCP antigens, which are then internalized by RA synovial fibroblast-like synoviocytes. These synoviocytes act as antigen-presenting cells, which lead to antibody production against CCPs. This observation that RF is involved in eliciting anti-CCP antibodies is rational, and would explain the tight correlation between RF levels and anti-CCP antibody levels in RA (Figs 9 & 10). Importantly, the antigen internalization activity is observed in synoviocytes from RA patients and dermal fibroblasts from psoriasis patients, but not in normal dermal fibroblasts. This indicates that RA synovial cells already display a pro-inflammatory phenotype under the influence of disease-causative pathogens. Therefore, we consider CCPs and subsequent anti-CCP antibody

production is not a primary event, which is implicated in the severity and progression of arthritis.

In the clinical field, it is considered that patients positive for IgM-RF or anti-CCP antibodies are at risk for developing RRP [69], which is observed in 10–40% of RA patients despite immediate treatment with MTX [46–48]. Since RRP in the first year of early RA was reported to be a predictive indicator for further disability and joint damage progression [70], it is important to determine whether periodontal pathogenic bacteria contribute to the progression of arthritis or not. Contrary to our expectations, our data indicate that anti-CCP antibody positivity does not reflect either disease activity or prognosis of RA. However, anti-CCP antibody seems not to be a simple hallmark of exposure to *A. actinomycetemcomitans* or other periodontal bacteria in patients with RA, because of the significant differences in the anti-CCP antibody profiles between the RRP and non-RRP groups. For example, anti-CCP antibody levels do not correlate with ESR and CRP levels in the RRP group, but correlate well with these in the non-RRP groups (Figs 9 & 10), despite good correlation with RF levels in both groups. These differences between RRP and non-RRP can be explained by the difference in the types of pathogens dominantly involved in evoking RF, which may subsequently elicit anti-CCP antibodies. For instance, Pg-LPS may be the dominant pathogen that contributes to evoking RF in the RRP group, while PG-PS might be the main contributor in the non-RRP group.

These observations indicate that the patients in the RRP group are under the influence of oral pathogenic bacteria or their pathogenic components, such as Pg-LPS produced by *P. gingivalis*, leukotoxin-A produced by *A. actinomycetemcomitans*, or other related pathogens. On the other hand, patients in the non-RRP group might be affected by intestinal bacteria or their pathogenic components such as *E. coli*-LPS and PG-PS. In this regard, it is important to take into consideration that IgG and especially IgA antibody responses to Pg-LPS are significantly increased by prolonged treatment with MTX (S4 Fig). This indicates that MTX may enhance the growth of oral pathogenic bacteria or may disturb the homeostasis of oral and intestinal microbiota composition. Indeed, recent studies indicate the potential of an oral chronic infection to alter arthritis progression in susceptible patients, although the pathological mechanisms involved are not clearly understood. At this point, Nakajima et al. [71] have reported critical findings to explain the possible pathogenic roles of periodontal bacteria. A single oral administration of *P. gingivalis* in mice induced significant diversity of microbial communities in the gut, which coincided with the dissemination of enterobacteria to the liver, and decreased mRNA expression of tight junction proteins, leading to an increase in serum endotoxin levels. Importantly, the alteration of gut microbiota composition was not caused by the growth of *P. gingivalis* in the intestine, but daily influx of *P. gingivalis* to the intestinal lumen affects not only intestinal bacterial flora, but also affects immune defense function at the intestinal mucosa, and increases susceptibility to various types of bacteria and their toxins. Furthermore, Van der Post et al. [72] reported that *P. gingivalis*, which is abundant in the oral cavity, but is also found in the colon, produces a proteinase, Arg-gingipain B (RgpB), which is capable of cleaving the mucin layer that protects the colonic epithelial surfaces from the penetration of commensal bacteria, and may play a key role in triggering colitis. We believe that these proposals are a rational way to explain the potential risk of periodontitis for a certain subset of RA patients. Since periodontitis is not specific to RA, and widely distributed even in the general population, we assume that *P. gingivalis* influxed into gastrointestinal tract may play critical pathological roles in susceptible patients. In this regard, we consider that immune defense function in the gastrointestinal tract may differ among the NL, RRP and non-RRP groups. For example, it is highly likely that periodontal bacteria and their components may contribute to dysbiosis development or to damage of the mucosal barrier system in the gastrointestinal tract of a certain subset of RA patients such as those with RRP. Therefore, we believe it is important

to consider the possible implication of oral pathogenic bacteria in augmentation of disease activity in RA regardless of whether patients have infectious periodontitis or not.

In fact, imbalance of intestinal bacteria was considered as a possible factor in the etiopathogenesis of RA [73, 74]. To study the possible contribution of dysbiotic gut microbiota to the pathogenesis of RA, we treated patients with RA with a natural milk antibody preparation, which contains high levels of antibodies against pathogenic entromicrobes and their toxins. We found that supplemental treatment with this milk antibody preparation effectively reduced arthritis symptoms and improved intestinal disorders in a certain subset of RA patients [75]. Recent studies more clearly indicate dysbiosis in RA as reviewed [27]. More importantly, recent studies show a genetic influence on the composition of the dominant eubacterial population in mice [76] and children [77, 78]. In addition, Gomez et al. [79] reported that the intestinal bacterial population of CIA-susceptible DR β 1 0401 transgenic mice is dominated by a *Clostridium*-like bacterium, whereas the guts of CIA-resistant 0402 transgenic mice are enriched for members of the *Porphyromonadaceae* family and *Bifidobacteria*. Furthermore, Totaro et al. [80] reported that patients with undifferentiated peripheral inflammatory arthritis and RA, who carry the HLA-DRB1*04 allele, showed a high positivity for *P. gingivalis* DNA in the synovial tissues compared to patients negative for the allele. These observations indicate that oral and intestinal bacteria composition is under the influence of HLA types, and the gut microbiome will be a potential biomarker for susceptibility to arthritis.

Importantly, regardless of being pathogenic or non-pathogenic, bacteria commonly carry pathogen-associated molecular patterns on their surfaces, which are recognized by pattern recognition receptors (PRRs) such as toll-like receptor (TLRs), and may activate host innate and adaptive immune systems. Therefore, it is highly likely that excess amounts of a variety of potential pathogens, which overwhelm the host immune defense functions, stimulate the PRRs, and trigger an uncontrollable inflammatory reaction, leading to the development of autoimmune diseases under certain conditions [22, 81, 82]. In this study, we tested antibody responses to three potential pathogens in patients with RA, and concluded that a variety of commensal and pathogenic microbes and their components may play pathological roles under certain conditions. Lastly, we believe that oral pathogenic bacteria such as *P. gingivalis* and others influxed into the intestinal tract might play indirect but critical pathogenic roles in enhancing and perpetuating inflammatory synovitis and osteitis, leading to severe joint damage in a subset of RA patients such as classified into the RRP group, regardless these patients are affected by periodontal infection or not.

Conclusion

A variety of bacterial pathogens overwhelming host defense function may play critical pathogenic roles independently, collectively, and/or synergistically, and contribute to evoking serological disease marker levels and aggravating disease activity in RA. The outcomes of disease vary significantly depending on the types and combinations of pathogens dominantly involved. This concept will be applied for studying the pathogenesis of other autoimmune diseases.

Supporting information

S1 Appendix. “An ELISA protocol to improve the accuracy and reliability of serological antibody assays”.

(PDF)

S1 Fig. Effect of aging on IgG and IgA antibody responses to bacterial pathogens. IgG and IgA antibody levels against *E. coli*-LPS, Pg-LPS and PG-PS were determined in sera from 38

NL controls, 54 patients with RRP and 101 patients with non-RRP, and plotted against age. Antibody levels against these pathogens were not affected by age in both NL and RA groups, except IgG anti-Pg-LPS antibody, which increased with age in the NL controls, whereas tended to decrease in the RRP group. NOTE: Pink: significant correlation at $p < 0.05$, Blue: trending toward correlation at $0.05 \leq p < 0.15$, No color: no correlation.

(TIF)

S2 Fig. Effect of disease duration on IgG and IgA antibody responses to bacterial pathogens. IgG and IgA antibody levels against *E. coli*-LPS, Pg-LPS and PG-PS were determined in sera from 54 patients with RRP and 101 patients with non-RRP, and plotted against disease duration (months). No apparent antibody level change associated with disease duration was observed. This evidence was confirmed in a separate study on the effect of therapeutics on IgG and IgA antibody responses in patients with RA.

(TIF)

S3 Fig. Effect of MTX on IgG and IgA antibody responses to potential pathogens. IgG and IgA antibody levels against *E. coli*-LPS, Pg-LPS and PG-PS were determined in sera collected multiple times from 7 patients with RRP and 3 patients with non-RRP, who were treated with MTX for 13 to 113 months. MTX treatment did not affect anti-*E. coli*-LPS and PG-PS, but apparently increased IgG and IgA antibody responses to Pg-LPS. NOTE: dotted black line: RRP, dotted red line: non-RRP, solid black line: an average \pm SD at 20 months. Pink: significant correlation at $p < 0.05$. No color: no correlation.

(TIF)

S4 Fig. Characterization of IgG and IgA antibody responses to pathogens in NL and RA.

IgG and IgA antibody levels against *E. coli*-LPS, Pg-LPS and PG-PS were determined in sera from 38 NL controls, 54 patients with RRP and 101 patients with non-RRP, and analyzed potential correlation between antibody responses against individual pathogens by Spearman non-parametric rank correlation analysis. IgG antibody levels against individual pathogens correlated or tended to correlate with IgA antibody levels in both NL and RA. By contrast, IgG antibody levels to individual pathogens did not correlate with IgG antibody levels against other pathogens in NL controls, indicating that IgG antibody responses to individual pathogens are unrelated independent event. However, IgG anti-Pg-LPS antibody levels correlated with IgG anti-PG-PS antibody levels in RRP, and IgG anti-*E. coli*-LPS antibody levels correlated with IgG anti-PG-PS antibody levels in non-RRP, indicating antibody responses to Pg-LPS and PG-PS in RRP and antibody responses to *E. coli*-LPS and PG-PS in non-RRP are orchestrated.

NOTE: Plot: Visual display for positive and negative “ ρ ” value of Spearman correlation coefficient. Cells highlighted with yellow indicate significant correlation at $p < 0.05$, and blue indicate a trend at $p < 0.01$.

(TIF)

S1 File. Study protocol.

(PDF)

S2 File. Study protocol–English.

(DOCX)

Acknowledgments

The authors thank our colleagues, Bonnie McKinney and Jessica Chang, for their proof-reading of this manuscript and discussions. The authors thank Takanobu Okubo for his technical assistance with X-ray and MRI imaging.

Author Contributions

Conceptualization: Kuniaki Terato, Hiroshi Shionoya, Hiroshi Itoh, Kou Katayama.

Data curation: Kuniaki Terato, Richio Fukai.

Formal analysis: Richio Fukai, Kou Katayama.

Investigation: Kuniaki Terato.

Methodology: Kuniaki Terato, Takaki Waritani.

Project administration: Kou Katayama.

Supervision: Hiroshi Itoh.

Validation: Kuniaki Terato, Takaki Waritani, Hiroshi Shionoya, Kou Katayama.

Writing – original draft: Kuniaki Terato.

Writing – review & editing: Takaki Waritani, Kou Katayama.

References

1. Wilson C, Ebringer A, Ahmadi K, Wrigglesworth J, Tiwana H, Fielder M, et al. Shared amino acid sequences between major histocompatibility complex class II glycoproteins, type XI collagen and *Proteus mirabilis* in rheumatoid arthritis. *Ann Rheum Dis*. 1995; 54(3):216–20. PMID: [7748019](#)
2. Guilherme L, Kalil J, Cunningham M. Molecular mimicry in the autoimmune pathogenesis of rheumatic heart disease. *Autoimmunity*. 2006; 39(1): 31–9. <https://doi.org/10.1080/08916930500484674> PMID: [16455580](#)
3. Rashid T, E A. Autoimmunity in Rheumatic Diseases Is Induced by Microbial Infections via Crossreactivity or Molecular Mimicry. *Autoimmune diseases*. 2012; 2012:2012:539282.
4. Aoki S, Yoshikawa K, Yokoyama T, Nonogaki T, Iwasaki S, Mitsui T, et al. Role of enteric bacteria in the pathogenesis of rheumatoid arthritis: evidence for antibodies to enterobacterial common antigens in rheumatoid sera and synovial fluids. *Ann Rheum Dis*. 1996; 55(6):363–9. PMID: [8694575](#)
5. Rashid T, Leirisalo-Repo M, Tani Y, Hukuda S, Kobayashi S, Wilson C, et al. Antibacterial and antipeptide antibodies in Japanese and Finnish patients with rheumatoid arthritis. *Clin Rheumatol*. 2004; 23(2):134–41. <https://doi.org/10.1007/s10067-003-0847-6> PMID: [15045628](#)
6. Mikuls T, Payne J, Reinhardt R, Thiele G, Maziarz E, Cannella A, et al. Antibody responses to *Porphyromonas gingivalis* (*P. gingivalis*) in subjects with rheumatoid arthritis and periodontitis. *Int Immunopharmacol*. 2009; 9(1):38–42. <https://doi.org/10.1016/j.intimp.2008.09.008> PMID: [18848647](#)
7. Frulloni L, Lunardi C, Simone R, Dolcino M, Scattolini C, Falconi M, et al. Identification of a novel antibody associated with autoimmune pancreatitis. *N Engl J Med*. 2009; 361(22):2135–42. <https://doi.org/10.1056/NEJMoa0903068> PMID: [19940298](#)
8. Hitchon C, Chandad F, Ferucci E, Willemze A, Ioan-Facsinay A, van der Woude D, et al. Antibodies to *porphyromonas gingivalis* are associated with anticitrullinated protein antibodies in patients with rheumatoid arthritis and their relatives. *J Rheumatol*. 2010; 37(6):1105–12. <https://doi.org/10.3899/jrheum.091323> PMID: [20436074](#)
9. Okada M, Kobayashi T, Ito S, Yokoyama T, Komatsu Y, Abe A, et al. Antibody responses to periodontopathic bacteria in relation to rheumatoid arthritis in Japanese adults. *J Periodontol*. 2011; 82(10):1433–41. <https://doi.org/10.1902/jop.2011.110020> PMID: [21342003](#)
10. Arabski M, Fudala R, Koza A, Wasik S, Futoma-Koloch B, Bugla-Ploskonska G, et al. The presence of anti-LPS antibodies and human serum activity against *Proteus mirabilis* S/R forms in correlation with TLR4 (Thr399Ile) gene polymorphism in rheumatoid arthritis. *Clin Biochem*. 2012; 45(16–17):1374–82. <https://doi.org/10.1016/j.clinbiochem.2012.06.021> PMID: [22749779](#)
11. de Vries D, Dekker-Saeys A, Gyodi E, Bohm U, Ivanyi P. Absence of autoantibodies to peptides shared by HLA-B27.5 and *Klebsiella pneumoniae* nitrogenase in serum samples from HLA-B27 positive patients with ankylosing spondylitis and Reiter's syndrome. *Ann Rheum Dis*. 1992; 51(6):783–9. PMID: [1616364](#)
12. Fujii K, Tsuji M, Murota K, Terato K, Shimozuru Y, Nagai Y. An improved enzyme-linked immunosorbent assay of anti-collagen antibodies in human serum. *J Immunol Methods*. 1989; 124(1):63–70. PMID: [2809229](#)

13. Terato K, Do C, Cutler D, Waritani T, Shionoya H. Preventing Intense False Positive and Negative Reactions Attributed to the Principle of ELISA to Re-investigate Antibody Studies in Autoimmune Diseases. *J Immunological Methods*. 2014; 407:15–25.
14. Terato K, Do C, Chang J, Waritani T. Preventing further misuse of the ELISA technique and misinterpretation of serological antibody assay data. *Vaccine*. 2106; 34(39):4643–4.
15. Sartor R. Importance of intestinal mucosal immunity and luminal bacterial cell wall polymers in the aetiology of inflammatory joint diseases. *Baillieres Clin Rheumatol*. 1989; 3(2):223–45.
16. Toivanen P. Normal intestinal microbiota in the aetiopathogenesis of rheumatoid arthritis. *Ann Rheum Dis*. 2003; 62(9):807–11. <https://doi.org/10.1136/ard.62.9.807> PMID: 12922950
17. Cerf-Bensussan N, Gaboriau-Routhiau V. The immune system and the gut microbiota: friends or foes? *Nat Rev Immunol*. 2010; 10(10):735–44. <https://doi.org/10.1038/nri2850> PMID: 20865020
18. Sansonetti P. To be or not to be a pathogen: that is the mucosally relevant question. *Mucosal Immunol*. 2011; 4(1):8–14. <https://doi.org/10.1038/mi.2010.77> PMID: 21150896
19. Mathis D, Benoist C. Microbiota and autoimmune disease: the hosted self. *Cell Host Microbe*. 2011; 10(4):297–301. <https://doi.org/10.1016/j.chom.2011.09.007> PMID: 22018229
20. Scher J, Abramson S. The microbiome and rheumatoid arthritis. *Nat Rev Rheumatol*. 2011; 7(10):569–78. <https://doi.org/10.1038/nrrheum.2011.121> PMID: 21862983
21. Scheinecker C, S JS. Rheumatoid arthritis in 2010: from the gut to the joint. *Nat Rev Rheumatol*. 2011; 7(2):73–5. <https://doi.org/10.1038/nrrheum.2010.226> PMID: 21289609
22. Clemente JC, Ursell LK, Parfrey LW, Knight R. The impact of the gut microbiota on human health: an integrative view. *Cell*. 2012; 148(6):1258–70. <https://doi.org/10.1016/j.cell.2012.01.035> PMID: 22424233
23. Kjeldsen-Kragh J. Rheumatoid arthritis treated with vegetarian diets. *Am J Clin Nutr*. 1999; 70(3 Suppl):594S–600S.
24. Peltonen R, Kjeldsen-Kragh J, Haugen M, Tuominen J, Toivanen P, Førre O, et al. Changes of faecal flora in rheumatoid arthritis during fasting and one-year vegetarian diet. *Br J Rheumatol*. 1994; 33(7):638–43. PMID: 8019792
25. Peltonen R, Nenonen M, Helve T, Hänninen O, Toivanen P, Eerola E. Faecal microbial flora and disease activity in rheumatoid arthritis during a vegan diet. *Br J Rheumatol*. 1997; 36(1):64–8. PMID: 9117178
26. Vaahtovuori J, Munukka E, Korkeamäki M, L R., Toivanen P. Faecal microbiota in early rheumatoid arthritis. *J Rheumatol*. 2008; 35(8):1500–5. PMID: 18528968
27. Kang Y, Cai Y, Zhang X, Kong X, Su J. Altered gut microbiota in RA: implications for treatment. *Z Rheumatol*. 2016.
28. Xiaohao W, Bing H, Jin L, Hui F, Yinghui M, Defang L, et al. Molecular Insight into Gut Microbiota and Rheumatoid Arthritis. *Int J Mol Sci*. 2016; 17:431–41. <https://doi.org/10.3390/ijms17030431> PMID: 27011180
29. Scher JU, Sczesnak A, Longman RS, Segata N UC, Bielski C, Rostron T, et al. Expansion of intestinal *Prevotella copri* correlates with enhanced susceptibility to arthritis. *Elife*. 2013;2013 Nov 5; 2:e01202. <https://doi.org/10.7554/eLife.01202> PMID: 24192039
30. Cromartie W, Craddock J, Schwab J, Anderle S, Yang C. Arthritis in rats after systemic injection of streptococcal cells or cell walls. *J Exp Med*. 1977; 146(6):1585–602. PMID: 336836
31. Fox A, Brown R, Anderle S, Chetty C, Cromartie W, Gooder H, et al. Arthropathic properties related to the molecular weight of peptidoglycan-polysaccharide polymers of streptococcal cell walls. *Infect Immun*. 1982; 35(3):1003–10. PMID: 7040244
32. Wells A, Hightower J, Parks C, Kufoy E, Fox A. Systemic injection of group A streptococcal peptidoglycan-polysaccharide complexes elicits persistent neutrophilia and monocytosis associated with polyarthritis in rats. *Infect Immun*. 1989; 57(2):351–8. PMID: 2643565
33. Stimpson S, Brown R, Anderle S, Klapper D, Clark R, Cromartie W, et al. Arthropathic properties of cell wall polymers from normal flora bacteria. *Infect Immun* 1986; 51(1):240–9. PMID: 3940996
34. Cole B, Griffiths M. Triggering and exacerbation of autoimmune arthritis by the *Mycoplasma Arthritis* superantigen MAM. *Arthritis Rheum*. 1993; 36(7):994–1002. PMID: 8318046
35. Terato K, Harper D, Griffiths M, Hasty D, Ye X, Cremer M, et al. Collagen-induced arthritis in mice: synergistic effect of *E. coli* lipopolysaccharide bypasses epitope specificity in the induction of arthritis with monoclonal antibodies to type II collagen. *Autoimmunity*. 1995; 22(3):137–47. PMID: 8734568
36. Yoshino S, Sasatomi E, Mori Y, Sagai M. Oral administration of lipopolysaccharide exacerbates collagen-induced arthritis in mice. *J Immunol*. 1999; 163(6):3417–22. PMID: 10477613

37. Wooley P, Cingel B. Staphylococcal enterotoxin B increases the severity of type II collagen induced arthritis in mice. *Ann Rheum Dis*. 1995; 54(4): 298–304. PMID: [7763108](#)
38. de Pablo P, Dietrich T, McAlindon TE. Association of periodontal disease and tooth loss with rheumatoid arthritis in the US population. *J Rheumatol*. 2008; 35(1):70–6. PMID: [18050377](#)
39. Liao F, Li Z, Wang Y, Shi B, Gong Z, Cheng X. Porphyromonas gingivalis may play an important role in the pathogenesis of periodontitis-associated rheumatoid arthritis. *Med Hypotheses*. 2009; 72(6):732–5. <https://doi.org/10.1016/j.mehy.2008.12.040> PMID: [19246161](#)
40. Chou Yin-Yi, Lai Kuo-Lung, Chen Der-Yuan, Lin Ching-Heng, Chen H-H. Rheumatoid Arthritis Risk Associated with Periodontitis Exposure: A Nationwide, Population-Based Cohort Study. *PLoS One*. 2015; 10(10): e0139693. <https://doi.org/10.1371/journal.pone.0139693> PMID: [26426533](#)
41. Yoshida A, Nakano Y, Yamashita Y, Oho T, Ito H, Kondo M, et al. Immunodominant region of Actinobacillus actinomycetemcomitans 40-kilodalton heat shock protein in patients with rheumatoid arthritis. *J Dent Res*. 2001; 80(1):346–50. <https://doi.org/10.1177/00220345010800010901> PMID: [11269727](#)
42. Mikuls TR, Thiele GM, Deane KD, Payne JB, O'Dell JR, Yu F, et al. Porphyromonas gingivalis and disease-related autoantibodies in individuals at increased risk of rheumatoid arthritis. *Arthritis Rheum*. 2012; 64(11):3522–30. <https://doi.org/10.1002/art.34595> PMID: [22736291](#)
43. Marchesan JT, Gerow EA, Schaff R, Taut AD, Shin SY, Sugai J, et al. Porphyromonas gingivalis oral infection exacerbates the development and severity of collagen-induced arthritis. *Arthritis Res Ther*. 2013; 15(6):R186. <https://doi.org/10.1186/ar4376> PMID: [24456966](#)
44. Chukkappalli S, Rivera-Kweh M, Gehlot P, Velsko I, Bhattacharyya I, Calise SJ, et al. Periodontal bacterial colonization in synovial tissues exacerbates collagen-induced arthritis in B10.RIII mice. *Arthritis Res Ther*. 2016; 18(1):161. <https://doi.org/10.1186/s13075-016-1056-4> PMID: [27405639](#)
45. Sandal I, Karydis A, Luo J, Prislowsky A, Whittington KB, Rosloniec EF, et al. Bone loss and aggravated autoimmune arthritis in HLA-DRbeta1-bearing humanized mice following oral challenge with Porphyromonas gingivalis. *Arthritis Res Ther*. 2016; 18(1):249. <https://doi.org/10.1186/s13075-016-1143-6> PMID: [27784339](#)
46. St Clair EW, van der Heijde DM, Smolen JS, Maini RN, Bathon JM, Emery P, et al. Combination of infliximab and methotrexate therapy for early rheumatoid arthritis: a randomized, controlled trial. *Arthritis Rheum*. 2004; 50(11):3432–43. <https://doi.org/10.1002/art.20568> PMID: [15529377](#)
47. Klareskog L, van der Heijde D, de Jager JP, Gough A, Kalden J, Malaise M, et al. Therapeutic effect of the combination of etanercept and methotrexate compared with each treatment alone in patients with rheumatoid arthritis: double-blind randomised controlled trial. *Lancet*. 2004; 363(9410):675–81. [https://doi.org/10.1016/S0140-6736\(04\)15640-7](https://doi.org/10.1016/S0140-6736(04)15640-7) PMID: [15001324](#)
48. Breedveld F, Weisman M, Kavanaugh A, Cohen S, Pavelka K, van Vollenhoven R, et al. The PREMIER study: A multicenter, randomized, double-blind clinical trial of combination therapy with adalimumab plus methotrexate versus methotrexate alone or adalimumab alone in patients with early, aggressive rheumatoid arthritis who had not had previous methotrexate treatment. *Arthritis Rheum*. 2006; 54(1):26–37. <https://doi.org/10.1002/art.21519> PMID: [16385520](#)
49. Vastesaeger N, Xu S, Aletaha D, St Clair EW, Smolen JS. A pilot risk model for the prediction of rapid radiographic progression in rheumatoid arthritis. *Rheumatology (Oxford)*. 2009; 48(9):1114–21.
50. Terato K, Do CT, Shionoya H. Slipping through the Cracks: Linking Low Immune Function and Intestinal Bacterial Imbalance to the Etiology of Rheumatoid Arthritis. *Autoimmune diseases*. 2015; 2015:636207. <https://doi.org/10.1155/2015/636207> PMID: [25861466](#)
51. Terato K, Ye X, Miyahara H, Cremer M, Griffiths M. Induction by chronic autoimmune arthritis in DBA/1 mice by oral administration of type II collagen and Escherichia coli lipopolysaccharide. *Br J Rheumatol*. 1996; 35(9):828–38. PMID: [8810665](#)
52. Terato K, Do C, Comstock B, Zabrecky J, editors. A hypothesis: Two distinct factors, Autoantibody to Type II collagen elicited by mimic antigens and intestinal bacterial toxins, are involved independently and synergistically in the development of autoimmune arthritis [abstract]. *Proceedings of the 11th Asia Pacific League of Associations for Rheumatology Congress*; 2004 Sept 11–15; Jeju Korea: MediMedia Korea.
53. Arnett F, Edworthy S, Bloch D, McShane D, Fries J, Cooper N, et al. The American Rheumatism Association 1987 revised criteria for the classification of rheumatoid arthritis. *Arthritis Rheum*. 1988; 31(3):315–24. PMID: [3358796](#)
54. van der Heijde D, van Riel P.,, Nuver-Zwart I, Gribnau F, van de Putte L. Effects of hydroxychloroquine and sulphasalazine on progression of joint damage in rheumatoid arthritis. *Lancet* 1989; 8646:1036–8.
55. Ostergaard M, Edmonds J, McQueen F, Peterfy C, Lassere M, Ejlberg B, et al. An introduction to the EULAR-OMERACT rheumatoid arthritis MRI reference image atlas. *Ann Rheum Dis*. 2005; 64 Suppl 1: i3–7.

56. Hetland ML, Ejbjerg B, Horslev-Petersen K, Jacobsen S, Vestergaard A, Jurik AG, et al. MRI bone oedema is the strongest predictor of subsequent radiographic progression in early rheumatoid arthritis. Results from a 2-year randomised controlled trial (CIMESTRA). *Ann Rheum Dis*. 2009; 68(3):384–90. <https://doi.org/10.1136/ard.2008.088245> PMID: 18388160
57. Nakashima Y, Tamai M, Kita J, Michitsuji T, Shimizu T, Fukui S, et al. Magnetic Resonance Imaging Bone Edema at Enrollment Predicts Rapid Radiographic Progression in Patients with Early RA: Results from the Nagasaki University Early Arthritis Cohort. *J Rheumatol*. 2016; 43(7):1278–84. <https://doi.org/10.3899/jrheum.150988> PMID: 27134251
58. Waritani T, Chang J, McKinney B, Terato K. An ELISA Protocol to Improve the Accuracy and Reliability of Serological Antibody Assays. *MethodX*. 2017; 4:153–65.
59. König MF, Paracha AS, Moni M, Bingham CO 3rd, Andrade F. Defining the role of *Porphyromonas gingivalis* peptidylarginine deiminase (PPAD) in rheumatoid arthritis through the study of PPAD biology. *Ann Rheum Dis*. 2015; 74(11):2054–61. <https://doi.org/10.1136/annrheumdis-2014-205385> PMID: 24864075
60. Carmona-Rivera C, Carlucci P, Moore E, Lingampalli N, Uchtenhagen H, James E, et al. Synovial fibroblast-neutrophil interactions promote pathogenic adaptive immunity in rheumatoid arthritis. *Sci Immunol*. 2017; 2, eaag3358 (2017)
61. Cerutti A, R M. The biology of intestinal immunoglobulin A responses. *Immunity*. 2008; 28:740–50. <https://doi.org/10.1016/j.immuni.2008.05.001> PMID: 18549797
62. Mestecky J, Russell MW, E CO Intestinal IgA: novel views on its function in the defence of the largest mucosal surface. *Gut*. 1999; 44(1):2–5. PMID: 9862815
63. Coulie PG, Van Snick J. Rheumatoid factor (RF) production during anamnestic immune responses in the mouse. III. Activation of RF precursor cells is induced by their interaction with immune complexes and carrier-specific helper T cells. *J Exp Med*. 1985; 161(1):88–97. PMID: 2578547
64. Rosenstein ED, Greenwald RA, Kushner LJ, Weissmann G. Hypothesis: the humoral immune response to oral bacteria provides a stimulus for the development of rheumatoid arthritis. *Inflammation*. 2004; 28(6):311–8. <https://doi.org/10.1007/s10753-004-6641-z> PMID: 16245073
65. Wegner N, Wait R, Sroka A, Eick S, Nguyen KA, Lundberg K, et al. Peptidylarginine deiminase from *Porphyromonas gingivalis* citrullinates human fibrinogen and α -enolase: implications for autoimmunity in rheumatoid arthritis. *Arthritis Rheum*. 2010; 62(9):2662–72. <https://doi.org/10.1002/art.27552> PMID: 20506214
66. Schellekens G, Visser H, de Jong B, van den Hoogen F, Hazes J, Breedveld F, et al. The diagnostic properties of rheumatoid arthritis antibodies recognizing a cyclic citrullinated peptide. *Arthritis Rheum*. 2000; 43(1):155–63. [https://doi.org/10.1002/1529-0131\(200001\)43:1<155::AID-ANR20>3.0.CO;2-3](https://doi.org/10.1002/1529-0131(200001)43:1<155::AID-ANR20>3.0.CO;2-3) PMID: 10643712
67. König MF, Abusleme L, Reinholdt J, Palmer RJ, Teles RP, Sampson K, et al. *Aggregatibacter actinomycetemcomitans*-induced hypercitrullination links periodontal infection to autoimmunity in rheumatoid arthritis. *Sci Transl Med*. 2016; 8(369):369ra176. <https://doi.org/10.1126/scitranslmed.aaj1921> PMID: 27974664
68. Khandpur R, Carmona-Rivera C, Vivekanandan-Giri A, Gizinski A, Yalavarthi S, Knight JS, et al. NETs are a source of citrullinated autoantigens and stimulate inflammatory responses in rheumatoid arthritis. *Sci Transl Med*. 2013; 5(178):178ra40. <https://doi.org/10.1126/scitranslmed.3005580> PMID: 23536012
69. Granger B, Combe B, Le Loet X, Saraux A, Guillemin F, Fautrel B. Performance of matrices developed to identify patients with early rheumatoid arthritis with rapid radiographic progression despite methotrexate therapy: an external validation study based on the ESPOIR cohort data. *RMD Open*. 2016; 2(1):e000245. <https://doi.org/10.1136/rmdopen-2016-000245> PMID: 27252898
70. van den Broek M, Dirven L, de Vries-Bouwstra JK, Dehpoor AJ, Goekoop-Ruiterman YP, Gerards AH, et al. Rapid radiological progression in the first year of early rheumatoid arthritis is predictive of disability and joint damage progression during 8 years of follow-up. *Ann Rheum Dis*. 2012; 71(9):1530–3. <https://doi.org/10.1136/annrheumdis-2011-201212> PMID: 22532630
71. Nakajima M, Arimatsu K, Kato T, Matsuda Y, Minagawa T, Takahashi N, et al. Oral Administration of *P. gingivalis* Induces Dysbiosis of Gut Microbiota and Impaired Barrier Function Leading to Dissemination of Enterobacteria to the Liver. *PLoS One*. 2015; 10(7):e0134234. <https://doi.org/10.1371/journal.pone.0134234> PMID: 26218067
72. van der Post S, Subramani D, Bäckström M, Johansson M, Vester-Christensen M, Mandel U, et al. Site-specific O-glycosylation on the MUC2 mucin protein inhibits cleavage by the *Porphyromonas gingivalis* secreted cysteine protease (RgpB). *J Biol Chem*. 2013; 288(20):14636–46. <https://doi.org/10.1074/jbc.M113.459479> PMID: 23546879
73. Tlaskalová-Hogenová H, Stepánková R, Hudcovic T, Tucková L, Cukrowska B, Lodinová-Zádníková R, et al. Commensal bacteria (normal microflora), mucosal immunity and chronic inflammatory and

- autoimmune diseases. *Immunology letters*. 2004; 93(2–3):97–108. <https://doi.org/10.1016/j.imlet.2004.02.005> PMID: 15158604
74. Edwards C. Commensal Gut Bacteria and the Etiopathogenesis of Rheumatoid Arthritis. *J Rheum*. 2008; 35(8):1477–78. PMID: 18671318
 75. Katayama K, Matsuno T, Waritani T, Terato K, Shionoya H. Supplemental Treatment of Rheumatoid Arthritis with Natural Milk Antibodies against Entero-Microbes and Their Toxins: Results of an Open-Labeled Pilot Study. *Nutrition J*. 2011; 10(2).
 76. Toivanen P, Vaahtovuori J, Eerola E. Influence of major histocompatibility complex on bacterial composition of fecal flora. *Infect Immun*. 2001 69(4):2372–77. <https://doi.org/10.1128/IAI.69.4.2372-2377.2001> PMID: 11254595
 77. Stewart J, Chadwick V, Murray A. Investigations into the influence of host genetics on the predominant eubacteria in the faecal microflora of children. *J Med Microbiol* 2005 54(Pt 12):1239–42. <https://doi.org/10.1099/jmm.0.46189-0> PMID: 16278440
 78. Schmidt WP. Model of the epidemic of childhood atopy. *Med Sci Monit*. 2004; 10(2):HY5–9. PMID: 14737050
 79. Gomez A, Luckey D, Yeoman C, Marietta E, Berg Miller M, Murray J, et al. Loss of sex and age driven differences in the gut microbiome characterize arthritis-susceptible 0401 mice but not arthritis-resistant 0402 mice. *PLoS One*. 2012; 7(4):e36095. <https://doi.org/10.1371/journal.pone.0036095> PMID: 22553482
 80. Totaro MC, Cattani P, Ria F, Tolusso B, Gremese E, Fedele AL, et al. *Porphyromonas gingivalis* and the pathogenesis of rheumatoid arthritis: analysis of various compartments including the synovial tissue. *Arthritis Res Ther*. 2013; 15(3):R66. <https://doi.org/10.1186/ar4243> PMID: 23777892
 81. Midwood K, Piccinini A, Sacre S. Targeting Toll-like Receptors in Autoimmunity. *Curr Drug Targets*. 2009; 10(11):1139–55. PMID: 19715534
 82. Li M, Zhou Y, Feng G, Su S. The critical role of Toll-like receptor signaling pathways in the induction and progression of autoimmune diseases. *Curr Mol Med*. 2009; 9(3):365–74. PMID: 19355917