



OPEN

Blood pressure-lowering effects of a Bowman-Birk inhibitor and its derived peptides in normotensive and hypertensive rats

Maria Alzira Garcia de Freitas¹, Nathalia Oda Amaral², Alice da Cunha Morales Álvares¹, Sandriele Aires de Oliveira^{1,5}, Azadeh Mehdad^{1,5}, Diego Elias Honda¹, Amanda Sá Martins Bessa³, Marcelo Henrique Soller Ramada⁴, Lara Marques Naves², Carolina Nobre Ribeiro Pontes³, Carlos Henrique Castro³, Gustavo Rodrigues Pedrino²✉ & Sonia Maria de Freitas¹✉

Bioactive plant peptides have received considerable interest as potential antihypertensive agents with potentially fewer side effects than antihypertensive drugs. Here, the blood pressure-lowering effects of the Bowman-Birk protease inhibitor, BTCl, and its derived peptides, PepChy and PepTry, were investigated using normotensive (Wistar-WR) and spontaneously hypertensive rats (SHR). BTCl inhibited the proteases trypsin and chymotrypsin, respectively, at 6 μM and 40 μM , a 10-fold greater inhibition than observed with PepTry (60 μM) and PepChy (400 μM). These molecules also inhibited angiotensin converting enzyme (ACE) with IC_{50} values of 54.6 ± 2.9 ; 24.7 ± 1.1 ; and $24.4 \pm 1.1 \mu\text{M}$, respectively, occluding its catalytic site, as indicated by molecular docking simulation, mainly for PepChy and PepTry. Gavage administration of BTCl and the peptides promoted a decrease of systolic and diastolic blood pressure and an increase of renal and aortic vascular conductance. These effects were more expressive in SHR than in WR. Additionally, BTCl, PepChy and PepTry promoted coronary vasodilation and negative inotropic effects in isolated perfused hearts. The nitric oxide synthase inhibitor blunted the BTCl and PepChy, with no cardiac effects on PepTry. The findings of this study indicate a therapeutic potential of BTCl and its related peptides in the treatment of hypertension.

Cardiovascular diseases (CVDs) are one of the leading causes of mortality^{1,2}. Most of the deaths are attributed to stroke, myocardial infarction, coronary artery diseases and atrial fibrillation³, in which hypertension and obesity are considered as major risk factors⁴. Although hypertension was identified in the late 1950s as a primary risk factor, it still represents a global public health challenge^{1,2}. Thus, it is important to identify novel molecules with therapeutic potential for the treatment of hypertension and other CVDs. Pathophysiological characteristics of hypertension comprise increased total peripheral resistance⁵, endothelium dysfunction⁶ and decreased vascular blood flow⁷.

Plant protease inhibitors are of biotechnological importance and offer pharmaceutical potential for several diseases, including cardiovascular and autoimmune diseases, cancer, and inflammatory processes^{8–12}. Protease inhibitors, especially from the Kunitz and Bowman-Birk family (BBI), are commonly found in high quantities in leguminous seeds such as soybean, pea and bean. The black-eyed pea trypsin/chymotrypsin inhibitor (BTCl) - the object of the present study - is a member of the BBI family originally isolated from *Vigna unguiculata*

¹Biology Institute, Department of Cell Biology, Laboratory of Biophysics, University of Brasília (UnB), Quadra 604, Asa Norte, Bloco J 1º andar, Brasília, DF, 70910-900, Brazil. ²Center of Neuroscience and Cardiovascular Physiology; Department of Physiological Sciences, Biological Sciences Institute, Federal University of Goiás, Goiânia, GO, 74690-900, Brazil. ³Integrative Laboratory of Cardiovascular and Neurological Pathophysiology; Department of Physiological Sciences, Biological Sciences Institute, Federal University of Goiás, Goiânia, GO, 74690-900, Brazil. ⁴Graduate Program in Genomic Science and Biotechnology, and Graduate Program in Gerontology, Catholic University of Brasília, Brasília, DF, 70790-160, Brazil. ⁵Sandriele Aires de Oliveira and Azadeh Mehdad is deceased. ✉e-mail: pedrino@ufg.br; nina@unb.br

(Cowpea) seeds¹³. BTCI is a small protein of low-molecular mass (9071 Da), with seven disulfide bonds responsible for both the remarkable stability of the protein and the appropriate conformation of two opposite β -hairpins containing reactive sites (K26 and F53) against trypsin and chymotrypsin, respectively^{14,15}. This conformation enables the simultaneous and independent inhibition of trypsin and chymotrypsin, driven by an entropic and endothermic process^{16–20}. BTCI has been characterized as an enhancer of guanylin-induced natriuresis in isolated rat kidney assays protecting its degradation via chymotrypsin-like proteases. BTCI also increases urine flow, Na^+ excretion and glomerular filtration rate²¹. Intravenous administration of BTCI on Wistar rats has also shown a similar effect on bradykinin cleavage, inhibiting plasma serine proteases, as well as enhanced renal aortic vasodilation induced by bradykinin. The BTCI-Bradykinin complex has also been reported to induce smooth muscle contraction in dose-dependent manner²².

Antihypertensive agents such as thiazides, β blockers, angiotensin converting enzyme inhibitors, angiotensin receptor antagonists and calcium channel blockers are currently used for blood pressure control in the context of heart attacks and stroke prevention²³. These antihypertensive drugs, however, can cause adverse side effects, decreasing the effectiveness of drug treatment²⁴. In this context, interest has grown in the development of alternative beneficial natural and food products without the side effects observed with antihypertensive drugs^{25–27}. Indeed, the nutraceutical potential and pharmacological properties of bioactive peptides from plants and synthetic peptides are widely explored for hypertension treatment^{26–31}.

In the present study, the synthetic cyclic peptides, named as PepChy and PepTry, were designed to contain the same amino acid sequence of the two reactive loops present in the BTCI tridimensional structure¹⁶, each one connected by a disulfide bond. The cyclic peptides contained the same reactive sites of BTCI (K26 and F53), which are responsible for inhibiting trypsin and chymotrypsin, respectively, as well as trypsin-like and chymotrypsin-like proteases. Recently, a tridimensional structure of PepTry in complex with trypsin was solved at 1.15 Å resolution (PDB code 6EAT)³². Similar to BTCI (PDB code 2G81)¹⁹, this complex is mainly formed by electrostatic interactions involving the lysine reactive site of the PepTry. It is noteworthy that the cyclic peptides were also chosen based on the findings of our previous studies on the characterization of BTCI, as follows: *i*) enhancement of guanylin-induced natriuresis by inhibiting its degradation through chymotrypsin-like proteases in isolated rat kidneys²¹; *ii*) anticarcinogenic action in breast cancer cells through inhibition of trypsin-like, chymotrypsin-like and caspase-like proteases of the proteasome 20 S, on invasive MDA-MB-231 breast cancer cells and noninvasive MCF-7 breast cancer cells, as well as presenting no effect on mammary epithelial MCF-10A cells^{11,33}; *iii*) potential antihypertensive agent by hemodynamic and cardiovascular effects and its protective action on proteolytic degradation of bradykinin and derived peptides in Wistar rats, via intravenous administration, attributed to its ability to inhibit trypsin-like and chymotrypsin-like proteases²².

Considering the widely documented health benefits of Bowman-Birk inhibitors^{9–12,21,22,33–37}, as well as the general potential advantages of bioactive peptides from plants^{26–31} in terms of biodistribution, drug delivery of synthetic peptides, reduced side effects, high specificity and broad spectrum activity, the effects of the Bowman-Birk inhibitor BTCI and its derived peptides on blood pressure were investigated in the present study using normotensive and spontaneously hypertensive rats.

Results

Purification of BTCI and derived peptides PepTry and PepChy. Purification of BTCI from *V. unguiculata* seeds, and synthetic peptides derived from the BTCI structure, PepTry (CTKSIPPQC-OH; S-S on Cys 1–9) and PepChy (CTFSIPAQC-OH; S-S on Cys 1–9), and their purity analyses were performed prior to *in vivo* and *ex vivo* assays. As previously reported, BTCI was purified and presented a high purity and molecular mass of 9071.6 Da^{13–15,20}. Peptides were chemically synthesized and purified by semi-preparative high performance liquid chromatography (HPLC), as shown in Fig. 1A,C. The RP-HPLC profiles of peptides collected at 10.5 minutes (PepTry) and 12.0 minutes (PepChy) are shown in Fig. 1A,C, respectively. The molecular mass of PepTry (974.5 Da) and PepChy (967.35 Da) and their purities were confirmed by ESI-MS spectrometry, respectively, as indicated by a single spectrum obtained for each peptide (Fig. 1B,D).

Inhibition assay of BTCI, PepTry and PepChy against trypsin and chymotrypsin. The inhibitory activities of BTCI and its derived peptides, PepTry and PepChy, were evaluated through the residual enzymatic activity of serine proteases trypsin and chymotrypsin in the presence of increasing concentrations of BTCI and its derived peptides (Fig. 2A–D). In the absence of BTCI and peptides, the proteases cleave BAPNA/GPNA substrates releasing the yellow-colored p-nitroanilide product corresponding to an enzymatic activity of 100%³⁹. In the presence of BTCI and peptides, a gradual decay of the protease activities is observed. BTCI at approximately 6 μM and 40 μM inhibits trypsin and chymotrypsin, respectively, a 10-fold greater inhibition than for PepTry (60 μM) and PepChy (400 μM). The inhibition constants, K_i , of BTCI and PepTry against trypsin were $0.59 \pm 0.03 \times 10^{-8} \text{ M}$ ¹⁶ and $1.19 \pm 0.04 \times 10^{-7} \text{ M}$, respectively; K_i values against chymotrypsin for BTCI and PepChy were $1.15 \pm 0.04 \times 10^{-7} \text{ M}$ ¹⁷, and $1.21 \pm 0.26 \times 10^{-4} \text{ M}$, respectively. These values indicate that BTCI is a more potent inhibitor against trypsin than chymotrypsin, with PepTry more potent than PepChy.

In the present study, the ACE-inhibitory activity of BTCI and its derived peptides, PepChy and PepTry was evaluated at different concentrations (0–600 μM) as shown in Fig. 3. The ACE-inhibitory activity increased in a dose-dependent pattern. The highest inhibitory value of about 98% was recorded for PepTry and PepChy at 100 μM , whereas approximately 300 μM of BTCI was required to reach 94% of ACE-inhibition. The ACE-inhibition curve fitting was conducted by a non-linear method, from which the IC_{50} values for BTCI, PepChy and PepTry were estimated as $54.6 \pm 2.9 \mu\text{M}$, $24.7 \pm 1.1 \mu\text{M}$, and $24.4 \pm 1.1 \mu\text{M}$, respectively.

The ACE-inhibitory effects of PepChy and PepTry are consistent with molecular docking simulation. This methodology was used to predict the interactions of the inhibitors PepChy and PepTry with ACE by calculating interaction energies for the best pose of inhibitors closest to catalytic site of the enzyme. Best poses were achieved

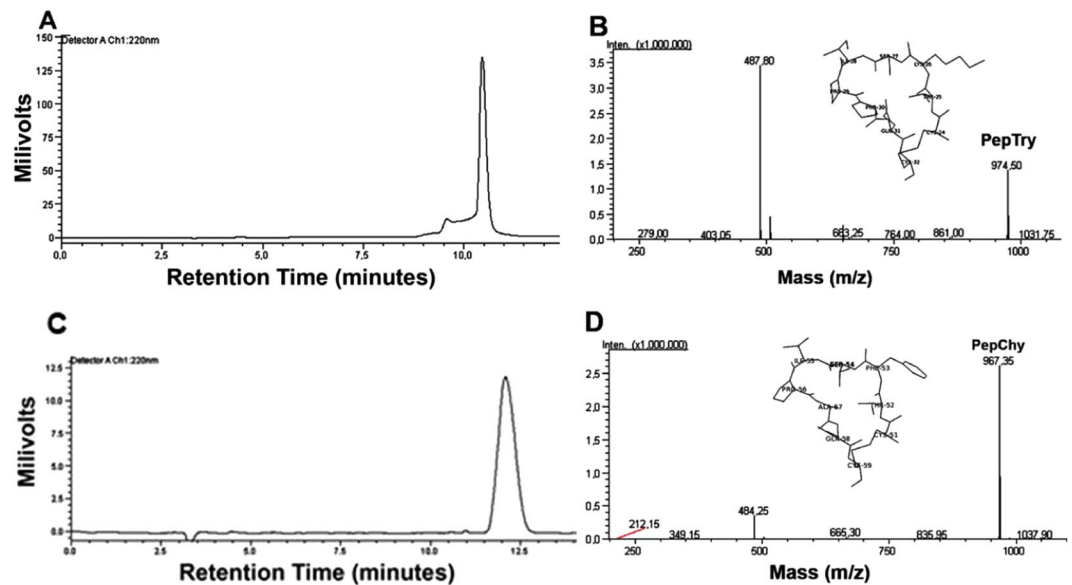


Figure 1. Purification and purity of synthetic peptides PepTry and PepChy. (A,C) Reverse-phase chromatography of PepTry and PepChy, respectively, on a C18 Shim-pak VP-ODS column using a linear gradient (5–95%) of acetonitrile. PepTry and PepChy were eluted at 10.5 minutes and 12.0 minutes and 50% and 55% ACN, respectively. (B,D) EIS-MS spectrometry analysis of PepTry (molecular mass of 974.5 Da) and PepChy (molecular mass of 967.35 Da), respectively. *In sets*: structures of PepTry and PepChy from crystal structure of BTCl¹⁹ (PDB code 2G81).

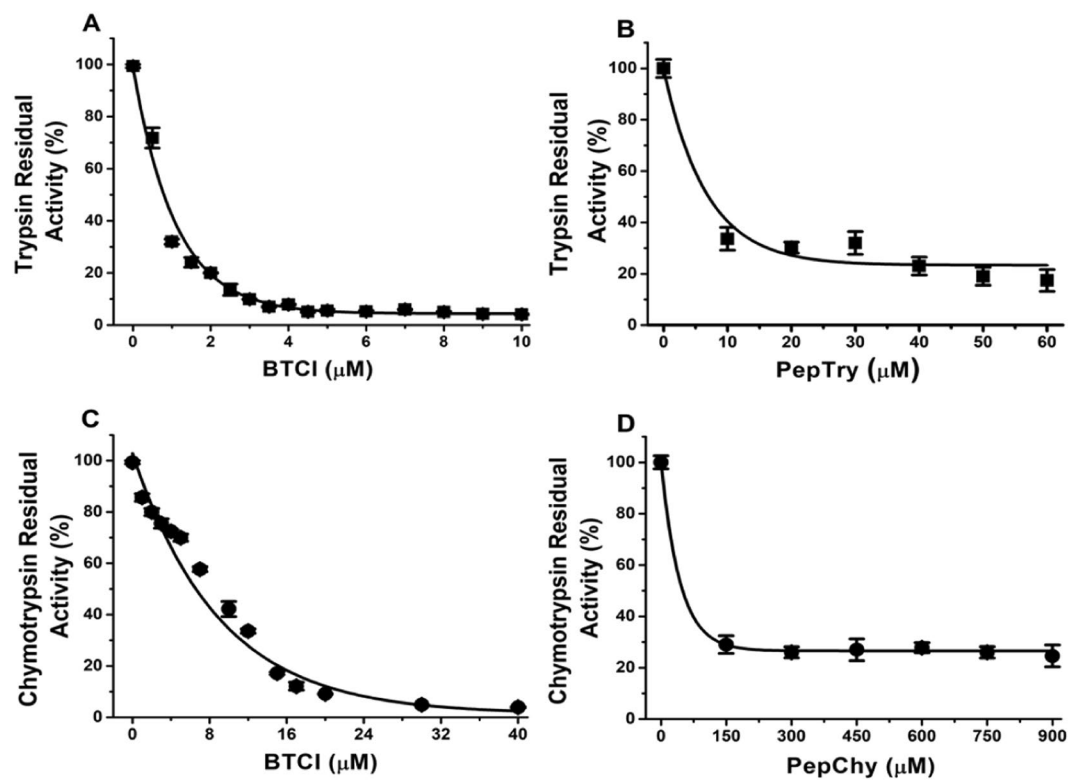


Figure 2. Inhibitory activities of BTCl and its derived peptides. (A) Residual activity of trypsin in the presence of increasing concentrations of BTCl and (B) PepTry. (C) Residual activity of chymotrypsin in the presence of increasing concentrations of BTCl and PepChy (D). The inhibitory assay showed that PepTry and PepChy required a concentration approximately six and eight times higher than BTCl in order to result in total inhibition of trypsin and chymotrypsin, respectively.

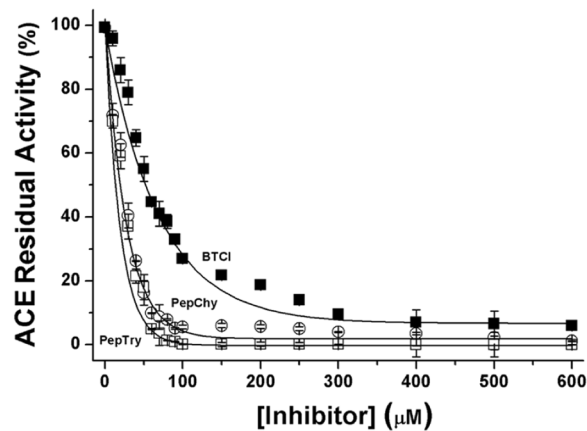


Figure 3. Inhibitory activities of BTCl (■—■), PepChy (o—o) and PepTry (□—□) against angiotensin converting enzyme (ACE). All molecules present inhibition closest to 95%. IC_{50} values were estimated for BTCl, PepChy and PepTry at $54.6 \pm 2.9 \mu\text{M}$, $24.7 \pm 1.1 \mu\text{M}$, and $24.4 \pm 1.1 \mu\text{M}$, respectively.

for both peptides, which occlude the enzyme catalytic pocket (Fig. 4A–C), interacting with ΔG binding energies of about -11.0 kcal/mol . The majority of hydrogen bonds were observed between PepChy and ACE (Fig. 4B), involving three amino acid residues in PepChy (F3, S4 and I5) and six amino acid residues in ACE (R522, E411, Y523, H383, E384 and H353). For PepTry, the majority of hydrogen bonds were observed between two amino acid residues in PepTry (T2 and K3) and three amino acid residues in ACE (R522, E384 and A354). Moreover, electrostatic interaction was observed between PepTry (K3) and ACE (E384), with T-shaped π - π -interactions between phenyl rings of Y523 in ACE and F3 in PepChy. It is noteworthy that amino acid residues H387, H383, E384 and E411 involved in coordination of Zinc in the native ACE active site also interact with PepChy and PepTry (Fig. 4B,C). Overall, the results showed that the interactions between ACE and the peptides occur within the catalytic site, leading to the complete inhibition of the enzyme, corroborating with the estimated IC_{50} , as described above (Fig. 3).

In vivo assays. Cardiovascular and hemodynamic effects were evaluated in normotensive (Wistar, WR) and spontaneously hypertensive rats (SHR). Equimolar concentrations (3.31 mM) were employed for all molecules, with doses at 30.0 mg/kg for BTCl, 3.3 mg/kg for PepTry and PepChy, and 0.9% for NaCl (Vehicle) (Figs. 5A–D, 6A–D, 7A–D). As expected, the vehicle did not promote significant changes in any of the hemodynamic parameters. In contrast, all cardiovascular parameters were modified after treatment with BTCl and its derived peptides (Figs. 5A–D, 6A–D). The comparison of the maximum response to BTCl, PepChy and PepTry between normotensive and SHR is presented in Fig. 7A–D.

Cardiovascular effects of BTCl, PepTry and PepChy administrated via gavage on SBP, DBP, RVC and AVC hemodynamic parameters in WR and SHR rats. BTCl in WR ($n=6$) decreased systolic blood pressure (SBP) (140.1 ± 1.3 to $102.0 \pm 6.3 \text{ mmHg}$; $\Delta -38.1 \text{ mmHg}$, from the baseline, Fig. 5A) and diastolic blood pressure (DBP) (91.5 ± 3.0 to $51.7 \pm 3.5 \text{ mmHg}$; $\Delta -39.8 \text{ mmHg}$, from the baseline, Fig. 5C). Additionally, the drug increased renal vascular conductance (RVC) ($72\% \pm 15.3\%$, Fig. 6A) and aortic vascular conductance (AVC) ($50.1 \pm 6.5\%$, Fig. 6C). In SHR ($n=6$), marked decreases were noticeable from baselines for SBP (175.4 ± 2.5 to $113.3 \pm 4.8 \text{ mmHg}$; $\Delta -62.3 \text{ mmHg}$, Fig. 5B) and DBP (121.3 ± 2.7 to $59.9 \pm 4.1 \text{ mmHg}$; $\Delta -61.4 \text{ mmHg}$, Fig. 5D). In addition, increases of RVC ($78 \pm 10.1\%$, Fig. 6B) and AVC ($80.3 \pm 11.5\%$, Fig. 6D) were achieved. Additionally, Fig. 7 shows the comparison of maximum cardiovascular responses induced by BTCl, PepChy and PepTry between SHR and WR. It is noteworthy that SBP, DBP and AVC variations promoted by BTCl were more expressive in SHR than in WR (Fig. 7A,B,D).

PepTry gavage at a dose of $3.3 \text{ mg}\cdot\text{kg}^{-1}$ in WR rats ($n=6$) resulted in decreases from the baseline for SBP (147.9 ± 1.8 to $108.9 \pm 4.4 \text{ mmHg}$; $\Delta -39.0 \text{ mmHg}$, Fig. 5A) and DBP (88.6 ± 1.4 to $57.3 \pm 2.7 \text{ mmHg}$; $\Delta -31.3 \text{ mmHg}$, Fig. 5C). Increases were also observed for RVC ($52.9 \pm 10.1\%$, Fig. 6A) and AVC ($58.7\% \pm 6.6\%$, Fig. 6C). In SHR ($n=6$) decreases from the baseline were observed in SBP (178.3 ± 2.0 to $123.4 \pm 4.6 \text{ mmHg}$; $\Delta -54.9 \text{ mmHg}$, Fig. 5B) and DBP ($114.8 \pm 1.2 \text{ mmHg}$ to $65.4 \pm 3.3 \text{ mmHg}$; $\Delta -49.4 \text{ mmHg}$, Fig. 5D). Increases were observed in RVC ($98.8 \pm 7.9\%$, Fig. 6B) and AVC ($69.9 \pm 8.5\%$, Fig. 6D). The variations observed in SBP, DBP and RVC promoted by PepTry were more expressive in SHR than in WR (Fig. 7A–D).

PepChy oral gavage at dose of $3.3 \text{ mg}\cdot\text{kg}^{-1}$ in WR rats ($n=6$) decreased both SBP and DBP from the baseline (147.1 ± 2.0 to $106.3 \pm 6.7 \text{ mmHg}$; $\Delta -40.8 \text{ mmHg}$, Fig. 5A) and (90.5 ± 2.5 to $55.8 \pm 3.9 \text{ mmHg}$; $\Delta -34.7 \text{ mmHg}$, Fig. 5C), respectively. In addition, RVC ($92.30 \pm 19.9\%$, Fig. 6A) and AVC ($58.2\% \pm 16.8\%$, Fig. 6C) increased. In SHR ($n=6$), the PepChy oral gavage resulted in decreased SBP and DBP from baselines (184.8 ± 2.0 to $126.8 \pm 2.3 \text{ mmHg}$; $\Delta -58.0 \text{ mmHg}$, Fig. 5B) and (117.2 ± 2.2 to 59.0 ± 2.6 ; $\Delta -58.2 \text{ mmHg}$, Fig. 5D), respectively. Increases were observed for RVC ($105.0 \pm 12.5\%$, Fig. 6B) and AVC ($105.8 \pm 5.8\%$, Fig. 6D). As observed for BTCl and PepTry, all hemodynamic responses and cardiovascular parameters in both WR and SHR were significantly

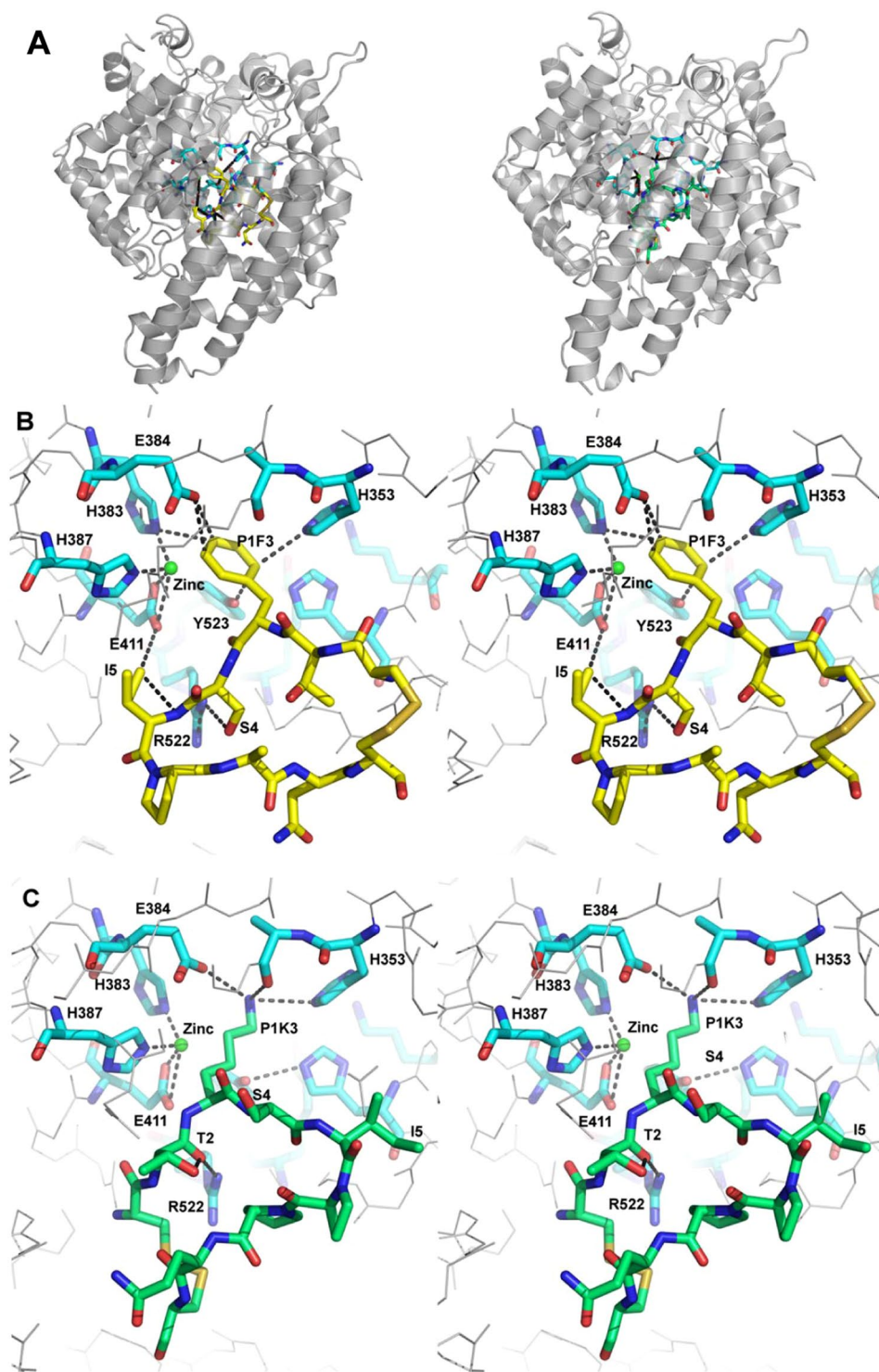


Figure 4. Tridimensional structures of the ACE-PepChy and ACE-PepTry complexes obtained by docking. **(A)** ACE (gray cartoon) in complex with PepChy (yellow sticks) and PepTry (green sticks). **(B)** Stereo view (cross-eyed) of ACE active site (blue) with bound PepChy (yellow). Interacting residues of the ACE active site and reactive site of PepChy (P1F3) are labelled. Atoms are coloured as red for oxygen, blue for nitrogen and green sphere for zinc ion. Hydrogen bonds at the complex interface are shown as dotted lines. **(C)** Stereo view (cross-eyed) of ACE active site (blue) with bound PepTry (green). Interacting residues of the ACE active site and reactive site of PepTry (P1K3) are labelled. Atoms are coloured as red for oxygen, blue for nitrogen and green sphere for zinc ion. Hydrogen bonds at the complex interface are shown as dotted lines. The crystallographic structures used by docking procedure were: ACE PDB code 1O8A⁴⁰, PepTry and PepChy from BTCl¹⁹ (PDB code 2G81).

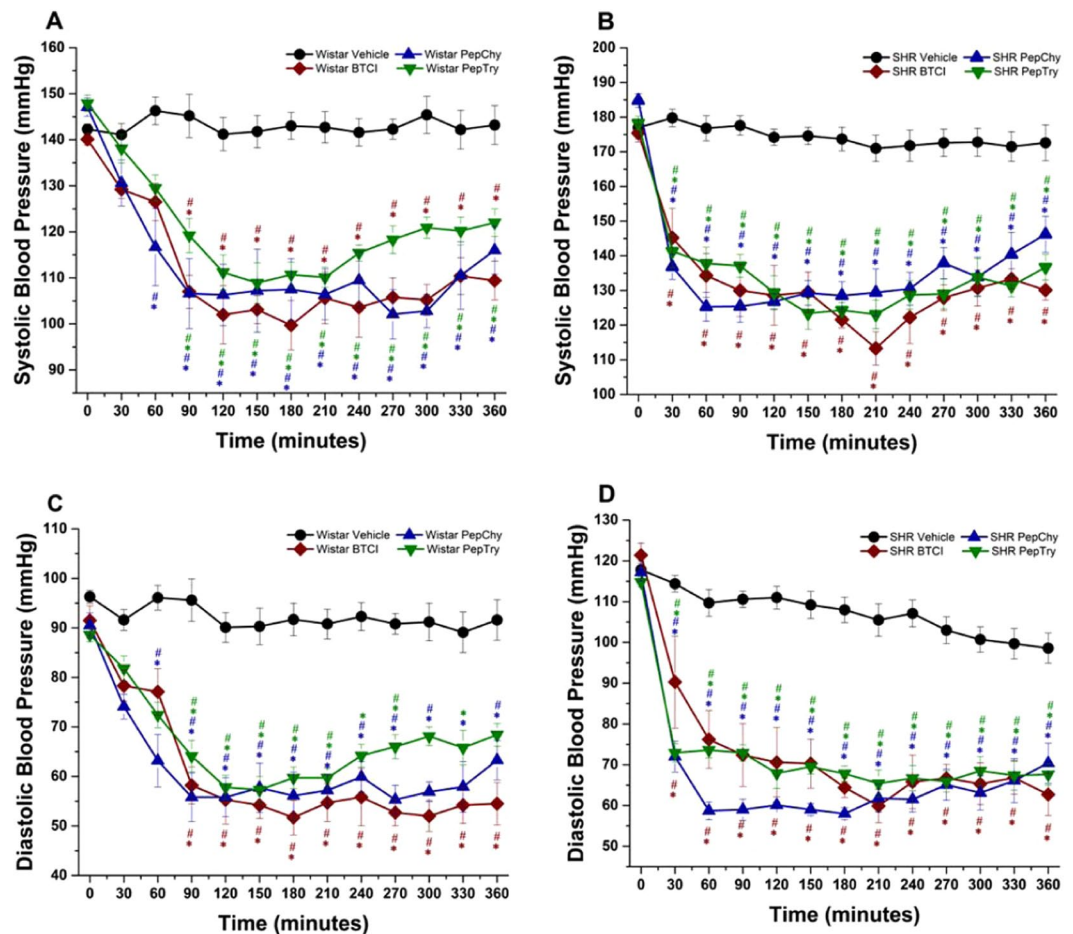


Figure 5. Hemodynamic effects in WR and SHR induced by gavage administration of BTCl ($30.0 \text{ mg}\cdot\text{kg}^{-1}$), PepTry ($3.3 \text{ mg}\cdot\text{kg}^{-1}$) and PepChy ($3.3 \text{ mg}\cdot\text{kg}^{-1}$) or Vehicle (NaCl 0.9%), in anesthetized rats. Systolic blood pressure in (A) Wistar and (B) SHR; Diastolic blood pressure in (C) Wistar and (D) SHR. The results are expressed as the mean \pm SEM. * $p < 0.05$ compared to vehicle; # $p < 0.05$ compared to basal time.

altered. In addition, the changes in SBP, DBP and AVC promoted by PepChy were more expressive in SHR than in WR (Fig. 7A–D).

As shown in Figs. 5–7, values of hemodynamic parameters evaluated in WR rats in the presence of BTCl and derived peptides presented reductions of SBP and DBP. In contrast, values for RAC and AVC increased following administration of BTCl and peptides, with the greatest response for BTCl and PepChy at 180 minutes, and PepTry at 270 minutes. In the SHR rats, values of SBP and DBP were similar, with faster reduction for BTCl and PepChy, when compared to PepTry. In contrast, an increase in RAC and AVC hemodynamic parameters was observed after 30 minutes administration of BTCl and peptides, with greater expressiveness for PepChy.

The results presented in Fig. 6A–D indicate significant increases in the renal and aortic conductance for all molecules, up to 180 minutes, compatible with a vasodilation effect on the respective arteries. Indeed, comparing the WR and SHR models studied for BTCl, the measured values were similar up to 180 minutes differing from 180 to 360 minutes. At 360 minutes, the values for the WR rats drastically decreased near to the basal level. These data indicate that vasodilation of the renal artery was greater than for the aortic artery (Fig. 6A,C). The expressive increase of CVR and AVC for PepChy in both WR and SHR models is noteworthy (Fig. 6A–D). Altogether, the *in vivo* assays suggest that BTCl and related peptides resulted in a greater hypotensive effect in SHR than in WR rats (Fig. 7A–D).

Effects of BTCl, PepChy and PepTry on left ventricular contractility and coronary vasodilation.

The effects of BTCl, PepChy and PepTry on left ventricular contractility and coronary vasomotricity in isolated hearts are presented in Fig. 8A–L. All molecules showed expressive changes in left ventricular contractility and coronary vasodilation.

The BTCl infusion promoted an increase followed by a significant reduction in the left ventricular end-systolic pressure (LVESP, E_{max} : $-17.83 \pm 4.34\%$, $p < 0.05$) (Fig. 8A). In addition, BTCl promoted a reduction in a maximal rate of left ventricular pressure rise (dP/dt_{max} , E_{max} : $-15.73 \pm 5.22\%$, $p < 0.05$) and in a maximal rate of left ventricular pressure decline (dP/dt_{min} , E_{max} : $-30.15 \pm 7.21\%$, $p < 0.05$) (Fig. 8D,G). BTCl also promoted

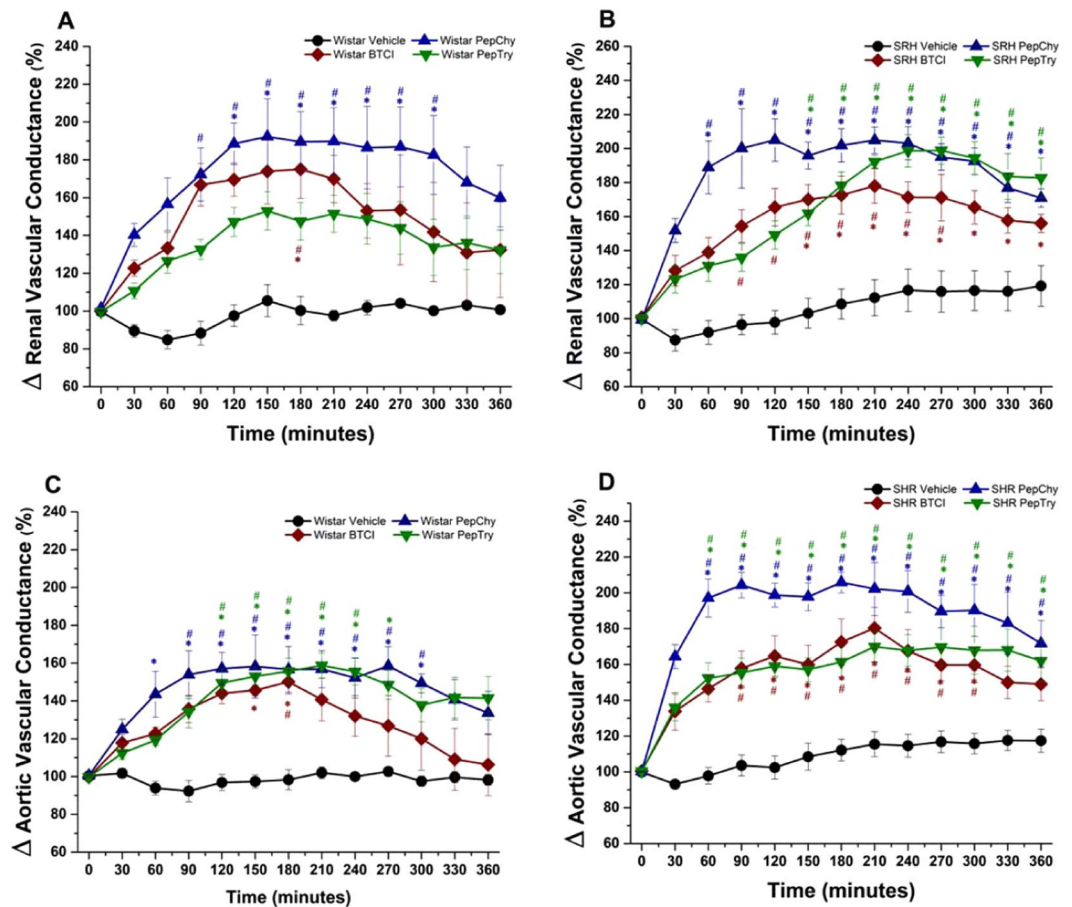


Figure 6. Cardiovascular responses induced by gavage administration of BTCl ($30.0 \text{ mg}\cdot\text{kg}^{-1}$), PepTry ($3.3 \text{ mg}\cdot\text{kg}^{-1}$) and PepChy ($3.3 \text{ mg}\cdot\text{kg}^{-1}$) or Vehicle (NaCl 0.9%), in anesthetized rats. Renal vascular conductance in (A) Wistar and (B) SHR; Aortic vascular conductance in (C) Wistar and (D) SHR. The results are expressed as the mean \pm SEM. * $p < 0.05$ compared to vehicle; # $p < 0.05$ compared to basal time.

a coronary vasodilation, observed by the reduction of the perfusion pressure (E_{max} : $-38.08 \pm 5.77\%$, $p < 0.05$) (Fig. 8J) without altered heart rate (data not shown). Pre-treatment with L-NAME blunted the cardiac effects of BTCl.

PepChy, as observed with BTCl, also induced a significant reduction in the LVESP (E_{max} : $-18.13 \pm 2.38\%$, $p < 0.05$), dP/dt_{max} (E_{max} : $-21.73 \pm 3.03\%$, $p < 0.05$) and dP/dt_{min} (E_{max} : $-29.95 \pm 4.08\%$, $p < 0.05$) (Fig. 8B,E,H). This peptide also promoted a reduction in perfusion pressure (E_{max} : $-24.59 \pm 3.94\%$, $p < 0.05$) (Fig. 8K). The pre-treatment with L-NAME abolished these effects. Unexpectedly, PepChy promoted a transitory increase in LVESP, dP/dt_{max} and dP/dt_{min} and dt/dt_{max} and dP/dt_{min} in the presence of L-NAME (Fig. 8B,E,H). The heart rate remained unaltered by PepChy (data not shown).

Perfusion with PepTry in the isolated hearts also evoked a significant reduction in the LVESP (E_{max} : $-18.55 \pm 2.70\%$, $p < 0.05$), dP/dt_{max} (E_{max} : $-17.89 \pm 3.29\%$, $p < 0.05$) and dP/dt_{min} (E_{max} : $-27.78 \pm 4.15\%$, $p < 0.05$) (Fig. 8C,F,I). This peptide also induced a significant decrease in the perfusion pressure (E_{max} : $-37.09 \pm 5.12\%$, $p < 0.05$) (Fig. 8L). No changes were observed in the heart rate (data not shown). Treatment with L-NAME only attenuated the reduction of the LVESP promoted by PepTry (Fig. 8C), but did not inhibit the effects on dP/dt_{max} , dP/dt_{min} , or perfusion pressure (Fig. 8F,I,L).

Discussion

Hypertension is a worldwide health problem, considered a major risk factor for stroke cardiovascular morbidity and mortality, as well as renal diseases. Most classes of antihypertensive drugs, in addition to providing cardiovascular benefits, can prevent non-cardiovascular diseases such as glaucoma and diabetes²³. Nevertheless, adverse side effects in some patients have been responsible for limitations and reduced compliance of current treatments^{23,24,41}. The pharmacological potential of bioactive peptides from plants and synthetic peptides has been widely examined, with activity in number in the treatment of hypertension also explored²⁶⁻³¹. Continued investigation of novel molecules, as natural, synthetic or modified compounds, has been recommended for drug development with therapeutic potential for treatment of hypertension and other cardiovascular diseases^{25,30,31,42}. In the present study, hypotensive and vasodilator properties were investigated in BTCl and two newly synthesized

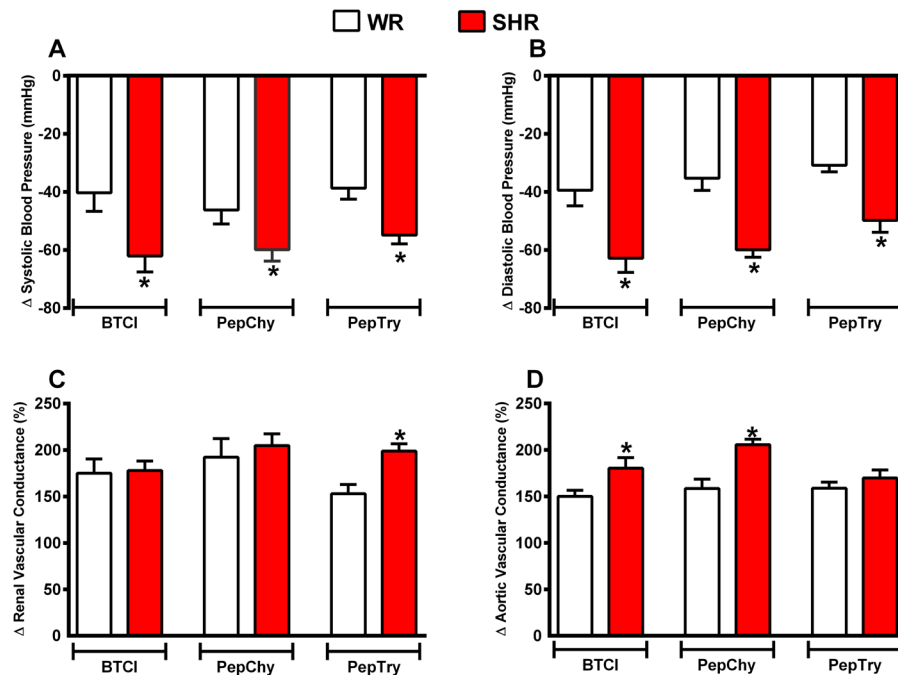


Figure 7. Maximum response induced by gavage administration of BTCl ($30.0 \text{ mg}\cdot\text{kg}^{-1}$), PepTry ($3.3 \text{ mg}\cdot\text{kg}^{-1}$) and PepChy ($3.3 \text{ mg}\cdot\text{kg}^{-1}$) in anesthetized WR rats ($n=6$) and SHR ($n=6$). (A) Systolic blood pressure; (B) Diastolic blood pressure; (C) Renal vascular conductance; (D) Aortic vascular conductance. The results are expressed as the mean \pm SEM. * $p < 0.05$ compared to WR.

peptides derived from BTCl, namely PepChy and PepTry. Additionally, potential mechanisms of action underlying hypotensive effects were evaluated.

BTCl is well-characterized as a “double-headed” protease inhibitor capable of inhibiting trypsin and chymotrypsin independently and simultaneously, irreversibly blocking the enzyme active site through its two specific reactive sites (P1), K26 and F53, respectively^{14,16–19,43,44}. Here, bioactive peptides derived from BTCl were designed to contain these reactive sites for trypsin (PepTry) and chymotrypsin (PepChy). These inhibited the proteases with less affinity than BTCl, as indicated by inhibition constants. Comparatively, the lower affinity of these peptides may be due to the lack of structural regions such as those stabilizing the whole interface of the BTCl-protease complex. This is in agreement with previous reported data in which cyclic peptides from the BBI family with additional amino acid residues after the disulfide bond presented a higher inhibitory activity against proteases^{45,46}.

Bioactive peptides have been described as blood-pressure lowering agents by decreasing renin or angiotensin-converting enzyme (ACE) activities, and by regulating the NO synthesis pathway^{27,28}. Among these, peptides with high antihypertensive potency have been designed based on the side chain amino acid cleavage position. Some of these containing charged (arginine and/or lysine), hydrophobic (valine, isoleucine, proline) and mainly aromatic amino acids (phenylalanine, tyrosine) residues, were identified as ACE inhibitors and characterized as potent antihypertensive agents^{47–49}. A BIOPEP database of biologically active peptides, including the ACE-inhibitors, together with their amino acid sequences, is available at <http://www.uwm.edu.pl/biochemia/index.php/pl/biopep>⁴⁸. Nevertheless, to date, no cyclic peptides derived from BBIs such as BTCl, which contain reactive sites formed by aromatic and positive charged amino acid residues, have been investigated as antihypertensive agents.

Similarly to BTCl, the two cyclic peptides studied contain the same reactive sites K26 and F53 responsible for inhibiting trypsin and chymotrypsin, respectively and also trypsin- and chymotrypsin-like proteases. These peptides were chosen based on our previous studies, where the natriuretic, hemodynamic, cardiovascular and anticarcinogenic effects of BTCl were attributed to its ability to inhibit trypsin and chymotrypsin-like proteases^{11,21,22,33}. Therefore, as expected, all results showed that blood pressure-lowering on WR and SHR is associated with the capability of BTCl and both peptides to inhibit proteases, such as ACE, and other trypsin/chymotrypsin-like proteases. Therefore, here, the ACE-inhibitory activity of BTCl, PepChy and PepTry increased in a dose-dependent manner, presenting IC_{50} values estimated at $54.6 \pm 2.9 \mu\text{M}$, $24.7 \pm 1.1 \mu\text{M}$, and $24.4 \pm 1.1 \mu\text{M}$, respectively.

The inhibition activities of BTCl and the peptides against ACE was performed in order to investigate the possible mechanism involved in blood pressure-lowering on WR and SHR, given that ACE is a protease involved in blood pressure control and BTCl and tested peptides are proteases inhibitors. As observed, maximum concentration of BTCl for inhibition of ACE were greater ($300 \mu\text{M}$) compared with trypsin and chymotrypsin inhibition ($6 \mu\text{M}$ and $40 \mu\text{M}$, respectively), indicating that BTCl is a more potent inhibitor against trypsin and chymotrypsin than ACE. Therefore, the differences in maximum concentration for inhibition of ACE by BTCl compared to

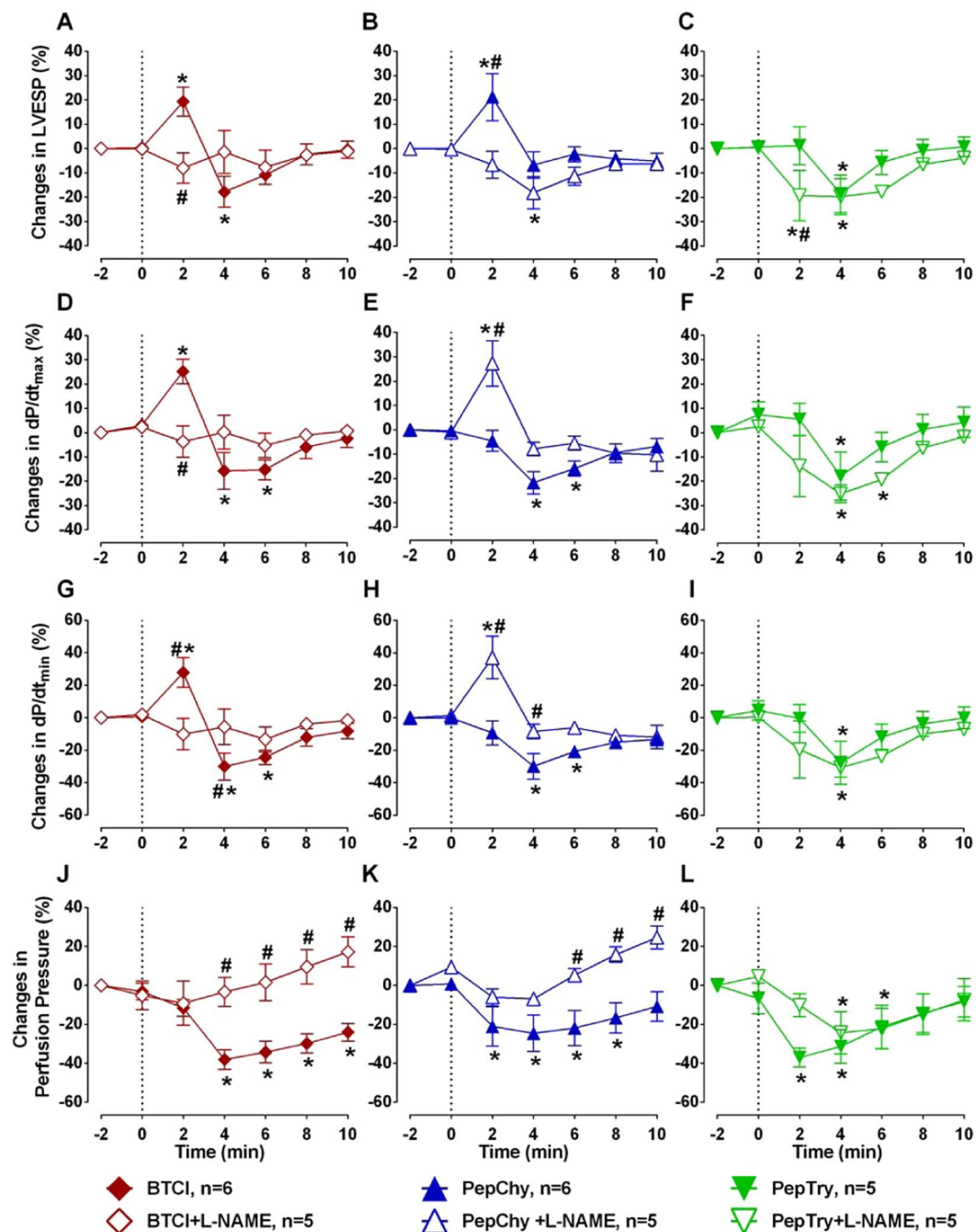


Figure 8. Effects of BTCl, PepChy and PepTry in isolated rat hearts. Effects of the PepChy, BTCl and PepTry in the (A–C) Left ventricular end-systolic pressure (LVESP), (D–F) Maximal Rate of Left Ventricular Pressure Rise (dP/dt_{max}), (G–I) Maximal Rate of Left Ventricular Pressure Decline (dP/dt_{min}), and (J–L) Perfusion Pressure. The dotted line represents the beginning of peptide infusion. Data are reported as mean \pm SE. * $p < 0.05$ vs. baseline, # $p < 0.05$ vs. between time points. *Two-way* ANOVA was followed by Sidak's multiple comparison post-test.

those proteases can be attributed to conformational differences in the active site of ACE, leading to steric impediments that avoid or hinder optimal interaction between BTCl and ACE molecules.

Based on these results, the inhibitory activities of BTCl and peptides against ACE may be mainly due to the presence of the basic (lysine) and the hydrophobic (phenylalanine) amino acids in the reactive loops that also determine the potency of protein and peptide inhibition of trypsin and chymotrypsin proteases. In all three molecules, the positively charged ϵ -amine group derived from lysine and the phenylalanine side chain might have occluded the ACE active site. It is noteworthy that peptides containing aromatic, positively charged and some hydrophobic residues (proline, isoleucine, valine and leucine), such as BTCl, have been reported as strong ACE-inhibitors and antihypertensive agents⁴⁹. Additionally, the IC_{50} values of BTCl, PepChy and PepTry are in

agreement with ACE-inhibitory peptides from several proteins deposited in the BIOPEP database (<http://www.uwm.edu.pl/biochemia/index.php/en/biopep>)⁴⁸.

The ACE-inhibitory effects of PepChy and PepTry were consistent with molecular docking simulation. As seen in Fig. 4, the hydrophobic phenylalanine and the charged lysine amino acids in all the inhibitors make the most important hydrophobic and electrostatic interactions in the ACE active site and are responsible for inhibiting ACE activity.

The docking simulation showed that the interaction between the two peptides and ACE occurs with the key residues within the catalytic site. This consists of E411, Y523, V518, H353, H513, E384, A354, Y520, E384 and Zn²⁺. The stability of ACE peptides interaction is represented by the binding energy values, dependent on the number of hydrogen bonds, hydrophobic and electrostatic interactions, as well as interaction with Zn²⁺ cofactor. Typically, high stability is related to a better inhibition showing lower IC₅₀ value. The best results were obtained for PepChy and PepTry at the ACE active site near to the Zn²⁺ ion. The lowest values of binding energies and IC₅₀ of approximately -11.0 kcal/mol and 24.0 μM, respectively, were compatible with the high stability of the ACE-peptide complexes. The peptides bind to the active site pocket of ACE through hydrogen bonds, and hydrophobic and electrostatic forces. In addition, PepChy and PepTry are also linked through F3 and K3, respectively, with specific amino acid side chains responsible for zinc coordination, such as E411, H383 and E384, by induced ion-dipole and electrostatic interactions. It has been reported that the same interactions play an important role in stabilizing the interface of the ACE-lisinopril and selenium analogues of captopril complexes^{38,40}. Therefore, these results suggested that these interactions contribute to the stabilization of the ACE-peptide complex, which lead to strong ACE-inhibitory activity. Together, these results highlight the important *in vitro* and *in vivo* antihypertensive properties and potential roles for these molecules in the reduction of blood pressure, as discussed below.

The present study was firstly motivated by the inhibitory effects of BTCI related to its natriuretic effects on the renal system model of Wistar rats. As reported, BTCI enhanced guanylin-induced natriuresis²¹ and showed a protective effect on bradykinin towards plasma serine proteases cleavage as well as enhanced renal aortic vasodilation induced by bradykinin²². Furthermore, it is also known that the cyclic peptides with nine amino acid residues stabilised by one present disulfide bond, in addition to their inhibitory activity against trypsin and chymotrypsin, through lysine and phenylalanine reactive sites, respectively, also offer structural rigidity and stability and can be tested and used as a natural protease inhibitor^{45,46}. Given the structural and inhibitory properties of BTCI and peptides, as well as the natriuretic and hemodynamic effects of BTCI, the hypotensive action through the peripheral vascular resistance and endothelial nitric oxide synthase (eNOS)/nitric oxide (NO) (eNOS/NO) pathway *in vivo* and *ex vivo*, respectively, were investigated in the present study.

The results of *in vivo* assays showed: I. BTCI and related peptides promoted a decrease of SBP and DBP and renal and aortic vasodilation in WR and SHR; II. The decrease in SBP, DBP and aortic vasodilation promoted by BTCI and PepChy is more expressive in SHR than WR; III. The reduction in SBP, DBP and renal vasodilation caused by PepTry administration is more expressive in SHR than WR. Taken together, the results demonstrate that BTCI and related peptides have antihypertensive and vasodilator effects. These findings highlight the therapeutic potential of the compounds in the treatment of hypertension.

In general, the blood pressure-lowering effects of drugs, chemical compounds or bioactive peptides are related with ability to modulate the renin-angiotensin system by the inhibition of renin or angiotensin-converting enzyme (ACE), as well as due to increased enzymatic activity of the endothelial nitric oxide synthase (eNOS), leading to increased nitric oxide (NO)^{27,28}. Antihypertensive drugs to reduce systolic or diastolic blood pressure are important in prevention of cardiovascular diseases and stroke. Our data demonstrate that BTCI and peptides administration promoted a decrease of SBP and DBP and an increase in RVC and AVC in WR and SHR. These increases indicate vasodilation in the renal and aortic territories, which possibly leads to the hypotension observed after oral administration of BTCI and the peptides. All the results are consistent with our previous data, which showed that BTCI has a protective effect on bradykinin cleavage through inhibition of plasma serine proteases, with vasodilation and hypotensive responses after intravenous administration²². It has also been demonstrated that BTCI enhanced the effect of guanylin on natriuresis, increasing urine flow, Na⁺ excretion and glomerular filtration rate²¹. In addition, the greatest effects of guanylin on osmolar clearance were achieved in the presence of BTCI. It is noteworthy that the results obtained here are consistent with those reported for bioactive peptides, hydrolysed proteins and commercial compounds that reduce SBP and DBP and increase renal and aortic vasodilation^{28,49–51}. Altogether, these effects and the sodium and water/urine excretion (pressure-natriuresis) promoted by BTCI can provide a compensatory effect on reducing blood pressure by decreasing the peripheral vascular resistance^{52–54}.

PepTry and PepChy also showed vascular relaxation and consequent hypotensive effects *in vivo*. We highlight the PepChy effects, since this peptide promoted expressive aortic vasodilation in SHR. Additionally, we demonstrated that hypotensive responses observed by peptide administration were more expressive in SHR than in WR. Therefore, these results indicate a possible therapeutic potential of BTCI and its related peptides in the treatment of hypertension.

The renin-angiotensin system (RAS) plays a crucial role in regulating blood pressure and electrolyte homeostasis. ACE catalyzes the degradation of the blood pressure lowering bradykinin that is responsible for the release of prostacyclin and nitric oxide (NO) on blood vessels^{40,55–58}. These systems were tested in *ex vivo* assays only for BTCI and PepChy, considering their higher expressive hypotensive effects *in vivo* compared to PepTry. Interestingly, no inhibitory effects of BTCI and its derived peptide, PepChy, were detected in the specific systems.

Nevertheless, BTCI and these peptides were able to promote an important coronary vasodilation, observed by the reduction in the perfusion pressure of the isolated hearts. These finding are also in agreement with the increase in the vascular conductance observed in *in vivo* assays. In addition, coronary vasodilation induced by BTCI or PepChy was completely blunted by the nitric oxide synthase inhibition. Pre-treatment with L-NAME, however, did not change the reduction in perfusion pressure induced by PepTry. Therefore, the coronary vasodilation

induced by BTCI and PepChy is mediated by the eNOS/NO pathway regulating the vascular tonus of the coronary arteries and myocardial contractility^{59–64}. In contrast, the coronary vasodilation induced by PepTry appears to be mediated in a nitric oxide-independent manner. Further investigation is required to better understand this effect. Additionally, we observed that BTCI and PepChy promoted a negative inotropic effect in isolated hearts that was inhibited by the non-selective NOS inhibitor, L-NAME. The pre-treatment with L-NAME was not able to blunt the effects of PepTry on cardiac contractility, suggesting again, that the nitric oxide is not involved in the effects evoked by this peptide.

In conclusion, the presented results showed that BTCI, PepChy and PepTry promoted reduction in blood pressure and coronary vasodilation. These data indicate great therapeutic potential in the peptides, forming the basis for further studies into the development of new drugs for treatment of cardiovascular diseases.

Material and methods

Purification of BTCI and its derived peptides, PepTry and PepChy. BTCI was purified from *Vigna unguiculata* seeds as previously described by Ventura *et al.*^{13,65}. In brief, crude extracts (CE) were obtained through incubation of homogenized seeds in distilled water in the presence of 10.0 μM phenylmethanesulfonyl fluoride (PMSF), a synthetic protease inhibitor, at 4 °C for 12 hours, followed by precipitation with 2.5% (v/v) TCA (trichloroacetic acid PA-C₂HCl₃O₂) (Sigma Aldrich, USA) and 50% ammonium sulfate ((NH₄)₂ SO₄) (m/v). The suspension was centrifuged at 8.000 g for 40 minutes at 4 °C and the precipitate (CE) collected, dialyzed and stored at 4 °C. Purification of BTCI was achieved with one step of ion exchange chromatography using previously activated DEAE-cellulose resin (Sigma Aldrich). The proteins were eluted using 10 mM phosphate buffer, pH 7.3 and a linear gradient of 0–800 mM NaCl. The fractions corresponding to BTCI were dialyzed and lyophilized.

PepTry (CTKSIPPQC-OH; S-S on Cys 1–9) and PepChy (CTFSIPAQC-OH; S-S on Cys 1–9) were purchased from AminoTech Research and Development (São Paulo, SP, Brazil), synthesized by a standard solid-phase method using the Fmoc strategy^{66,67}. Fmoc-amino acids and reagents were purchased from NovaSyn TGA (Novabiochem, San Diego, CA, USA). Peptides were synthesized through steps of deprotection of the Fmoc group using 20% (v/v) 4-methylpiperidine in dimethylformamide (DMF). The complete peptide linked to the resin was obtained after successive cycles of peptide bond formation using 2-(1H-Benzotriazole-1-yl)-1,1,3,3-tetramethylammonium tetrafluoroborate (TBTU) in DMF at room temperature and followed by removal of Fmoc groups and coupling with the subsequent amino acids⁶⁸. The peptide was cleaved from the resin with 92.5% (v/v) trifluoroacetic acid (TFA), 2.5% (v/v) thioanisole, 2.5% (v/v) 1,2-ethanedithiol, and precipitated using diisopropyl ether (–20 °C). The precipitate was solubilized using 50% (v/v) acetonitrile (ACN) and then lyophilized. The formation of disulfide bonds was achieved in diluted solution buffered adjusted with NH₄OH at pH 8.

Peptides were purified by reverse-phase high performance liquid chromatography, RP-HPLC (Class LC-20A from Shimadzu Corp., Kyoto, Japan), using a semi-preparative C18 Shim-pak VP-ODS column (5 μm, 4.6 × 250 mm) (Shimadzu Corp., Kyoto, Japan) with a linear gradient (5–45%) of ACN. The column was washed with 95% ACN and 0.1% TFA and equilibrated with 5% ACN and 0.1% TFA. Crude peptide extract was applied to the column and subjected to a linear gradient (5 to 95%) of ACN for 90 minutes at a flow rate of 1.0 mL/min. The chromatographic profile was followed by reading the absorbance at 220 nm.

Purity and molecular mass of BTCI and peptides were estimated by electrospray ionization mass spectrometry (ESI-MS) on a LCMS-2020 system (Shimadzu Corp., Kyoto, Japan). The positive reflector with external calibration, as well as molecular mass range of calibrants (900–9100 Da), were considered. Concentration of the peptides was estimated using absorbance at 215, 225 and 205 nm, as follows⁶⁹:

$$C (\mu\text{g/mL}) = \frac{[(A^{215} - A^{225}) \times 144] + (A^{205} \times 31)}{2} \times \text{dilution factor} \quad (1)$$

Inhibition assay of BTCI, PepTry and PepChy against trypsin and chymotrypsin. The inhibitory activities of BTCI, PepTry and PepChy against trypsin and chymotrypsin activities were assayed using the substrates Na-benzoyl-DL-arginine-p-nitroanilide (BAPNA) and n-glutaryl-L-phenylalanine-p-nitroanilide (GPNA), respectively (Sigma)^{19,39}. Enzymatic assays were performed in 50 mM Tris-HCl, CaCl₂, 20 mM pH 7.6 for chymotrypsin or pH 8.2 for trypsin. Forty μL of BTCI and PepTry (0 to 20 μM) and BTCI and PepChy (0 to 50 μM) were incubated with 40 μL of trypsin (2.57 μM) or chymotrypsin (28.60 μM), respectively, in a 96-well plate at room temperature for 15 minutes. Then, 200 μL BAPNA (0.064 mg/mL) or GPNA (0.8 mg/mL) were added. The reaction was stopped by addition of 30 μL 30% acetic acid (v/v). Enzymatic hydrolysis of the substrate was evaluated by recording the absorbance at 410 nm. The residual activities of the enzymes, in the presence of inhibitors, were estimated considering the free enzyme activity to be 100%. Inhibition constants of the enzyme-inhibitor complexes, K_i, were calculated from fitted inhibition curves⁷⁰ using the GRAFIT program version 3 (Erithacus Software, Horley, Surrey, United Kingdom).

ACE inhibition assay. Inhibitory activities of peptides PepTry and PepChy and BTCI against ACE were performed according to Hayakari, *et al.* (1978) using the synthetic substrate hippuryl-L-histidyl-L-leucine (HHL)⁷¹. Briefly, ACE stock solution was obtained from rabbit lung in 10 mM sodium phosphate buffer, pH 8.3, and BTCI and peptides stock solutions were prepared in MilliQ water (m/v). Concentration of BTCI was estimated from spectrophotometric absorbance at 280 nm based $A_{280}^{1\%} = 8.23$. Concentration of PepTry and PepChy were estimated according to Eq. 1. BTCI and peptides were diluted in 10 mM sodium phosphate buffer pH 8.3 to obtain concentrations ranging from 0 to 600 μM. Ten μL peptide solutions were pre-incubated with 10 μL of ACE containing 0.5 M NaCl at 37 °C for 10 min. The mixture was then incubated with 10 μL substrate containing

12.5 mM HHL in 10 mM sodium phosphate buffer, pH 8.3 and 300 mM NaCl at 37 °C for 45 min. The enzymatic reaction was terminated by adding a mixture containing 550 μ L of 100 mM sodium phosphate pH 8.3 and 332.5 μ L of 3% (m/v) 2,4,6-trichloro-s-triazine (TT) (in dioxane). The mixture was incubated for 5 min. at room temperature and then centrifuged at 1000 g for 10 min at 4 °C. The absorbance values of supernatants containing hippuric acid liberated from HHL were recorded at 382 nm using the Jasco Spectrophotometer V-530 (Jasco Analytical Instruments, Tokyo, Japan). IC₅₀ values for peptides and BTCl were calculated from nonlinear regression curve of ACE residual activity (%) versus inhibitor concentration (μ M) (BTCl, PepTry and PepChy) using Origin software (OriginLab Corporation, USA). The control was prepared containing only the substrate without enzyme solution. Assays were performed in triplicate.

Interaction of Peptides with Angiotensin converting enzyme (ACE) by docking procedure. The binding of peptides into the ACE active site was performed using the Evolutionary Algorithm for Docking (EADock)⁷², available at <http://www.swissdock.ch/docking#>. This algorithm is based on two adjust functions of molecular docking, interfaced with the CHARMM package for binding energy calculations and outputs the atomic coordinates of the protein-ligand complex. The tridimensional coordinates of target protein (ACE, PDB code 1O8A) and ligands, PepTry and PepChy, derived from BTCl structure (PDB code 3RU4), were considered for the docking procedure. The tridimensional coordinates of ligands were prepared using the Pymol program (DeLano Scientific LLC) and converted into a MOL2 file format with all hydrogen using the Open Babel GUI programa⁷³ version 2.4.1. The best model was ranked according to the position of ligands closest to the ACE active site, as well as the docking scores (Full Fitness) and the most favorable estimated Gibbs free energy values for the ACE-peptide binding process.

***In vivo* assays: hemodynamic and cardiovascular effects of BTCl, PepTry and PepChy.**

Animals. Adult male Wistar (WR) and spontaneously hypertensive (SHR) rats weighing 250 to 300 g from the Department of Physiological Sciences of the Federal University of Goiás, Brazil, were employed in all *in vivo* assays. The animals were housed in a special room under controlled conditions of a 12-h light–dark cycle and at 23 \pm 1 °C, with free access to water and food. The use of animals and the protocols for *in vivo* and *ex vivo* assays were approved by the Ethics Committee of Animal Use and Care at the Federal University of Goiás, Brazil (protocol numbers 13/2016 and 039/2017).

Surgical procedures. Surgical procedures were performed as previous described¹⁹. Rats were anesthetized with isoflurane (2% in O₂) and arterial blood flow (ABF) measurement was carried out from the right femoral or brachial artery via catheters. Administration of drugs was made through a catheter inserted into femoral veins. Anesthesia was maintained with urethane (1.2 mg.kg⁻¹, iv.). Tracheotomy was performed in order to reduce respiratory effort and airway resistance. The electrocardiogram (ECG) was monitored from needle electrodes on the forelimbs. For recording hemodynamic parameters rats were placed in a stereotaxic apparatus (Insight Ltda., Ribeirão Preto, SP, Brazil) in the ventral decubitus position. Body temperature was maintained at 37 \pm 1.0 °C with a heated water-circulating pad.

Hemodynamic and cardiovascular parameters recording. After stabilization of the cardiovascular parameters, 0.9% NaCl (vehicle - V) = or BTCl (30.0 mg/kg) and its derived peptides, PepTry and PepChy (3.3 mg/kg) were administered via gavage. The hemodynamic and cardiovascular parameters, systolic blood pressure (SBP), diastolic blood pressure (DBP), renal vascular conductance (RVC) and aortic vascular conductance (AVC) were recorded immediately after gavage and were monitored during 6 hours.

Pulsatile arterial pressure (PAP) measurements were performed through an arterial cannula connected to a pressure transducer linked to a specific amplifier (MLT0380 and Bridge Amp, ML221, AD Instruments, Bella Vista, Australia). Hemodynamic parameters were recorded (1000 samples/s), using a digital analog converter and LabChart 7 software (PowerLab 4/25, ML845, AD Instruments, Bella Vista, Australia). ECG signals were recorded (2.000 samples/s) using a digital analog converter, and were considered to calculate HR. The RBF and ABF were recorded in absolute values (mL/min) through a miniature probe on the left renal artery and abdominal aorta connected to a T206 flowmeter (Transonic Systems, Inc., Ithaca, NY, USA). The recorded signals (1000 samples/s) were analyzed using the PowerLab 4/25, ML845, AD Instruments, Bella Vista, Australia). The RVC and AVC were estimated by the ratio of RBF/mean arterial pressure (MAP) and ABF/MAP, respectively. The Δ RVC and Δ AVC were expressed as percentage change.

***Ex vivo* assays: Effects of BTCl, PepChy and PepTry on left ventricular contractility and coronary vasodilation.**

Male WR and SHR weighing 250 to 300 g were employed as described above. To evaluate the cardiac effect of BTCl, PepChy and PepTry, isolated hearts were perfused according to the Langendorff technique⁷⁴. Heparin (200 I.U) was injected intra-peritoneally and after 10–15 min animals were decapitated. The heart was carefully dissected and connected in the Langendorff system through the aortic stump and perfused with Krebs-Ringer solution containing 118.4 mM NaCl, 4.7 mM KCl, 1.2 mM KH₂PO₄, 1.2 mM MgSO₄·7H₂O, 1.25 mM CaCl₂·2H₂O, 11.7 mM glucose, and 26.5 mM NaHCO₃. In addition, albumin (0.2 mg/mL) was added to Krebs Ringer's solution to prevent aggregation of BTCl and peptides in the glassware of the system. The system was maintained with constant perfusion flow of 10.0 \pm 2 mL/min, at 37 °C and constant oxygenation (5% CO₂ and 95% O₂). Isovolumetric left ventricular systolic and diastolic pressures were measured after insertion of a balloon into the cavity of the left ventricle through a left atrium incision. Diastolic intraventricular pressure was measured during coronary perfusion via a pressure transducer connected to the aortic cannula and was adjusted to 10 \pm 2 mmHg. After 30 to 40 min, the hearts were perfused for 10 minutes with KRS containing (1) BTCl (1.0 nM), (2) PepChy (1.0 nM), or (3) PepTry (1.0 nM). To evaluate the possible effects of these

peptides on the eNOS/NO pathway, hearts were perfused with KRS containing nitric oxide synthase inhibitor NG-nitro-L-arginine methyl ester (L-NAME; 1 μ M) for 15 min before the perfusion of BTCl, PepChy or PepTr⁶¹y. The coronary vasodilatations induced by peptides were recorded and analyzed using a data acquisition system (DATAQ Instruments, Akron, OH, USA).

Statistical analysis. The GraphPad Prism software (v 6.03) was employed to calculate cardiovascular parameters as mean \pm E.P.M (Mean Standard Error). Variance (two-way ANOVA) and a subsequent Tukey's post-test were used to analyze the SBP, DBP, RVC and AVC variations. The maximum response after administration of BTCl, PepChy and PepTry were analyzed using the Student's t-Test. The results obtained for left ventricular pressure from isolated hearts were compared using two-way ANOVA and Sidak's post-test. A value of $p < 0.05$ was considered to denote a significant difference.

Ethical approval and informed consent. All procedures were performed in accordance with institutional guidelines for the use of laboratory animals of the institution and the protocols were approved by the Ethics Committee of Animal Use of the Federal University of Goiás (protocol numbers 13/2016 and 039/2017).

Data availability

All data produced during this work are available from corresponding authors on reasonable request.

Received: 17 April 2019; Accepted: 12 May 2020;

Published online: 15 July 2020

References

- Whitworth, J. A. 2003 World Health Organization (WHO)/International Society of Hypertension (ISH) statement on management of hypertension. *Journal of hypertension* **21**, 1983–1992, <https://doi.org/10.1097/00004872-200311000-00002> (2003).
- Roth, G. A. *et al.* Global, Regional, and National Burden of Cardiovascular Diseases for 10 Causes, 1990 to 2015. *Journal of the American College of Cardiology* **70**, 1–25, <https://doi.org/10.1016/j.jacc.2017.04.052> (2017).
- Bromfield, S. & Muntner, P. High blood pressure: the leading global burden of disease risk factor and the need for worldwide prevention programs. *Current hypertension reports* **15**, 134–136, <https://doi.org/10.1007/s11906-013-0340-9> (2013).
- Liu, X. Z. *et al.* Association between cardiovascular risk factors and stage 1 hypertension defined by the 2017 ACC/AHA guidelines. *Clinical and experimental hypertension (New York, N.Y.: 1993)*, 1–7, <https://doi.org/10.1080/10641963.2020.1714639> (2020).
- Bernatova. Endothelial dysfunction in experimental models of arterial hypertension: cause or consequence?. *Biomed Res. Int* **598271** (2014).
- Schulz, E., Gori, T. & Munzel, T. Oxidative stress and endothelial dysfunction in hypertension. *Hypertension research: official journal of the Japanese Society of Hypertension* **34**, 665–673, <https://doi.org/10.1038/hr.2011.39> (2011).
- Torok, J. Participation of nitric oxide in different models of experimental hypertension. *Physiological research* **57**, 813–825 (2008).
- Sharony, R., Park J, Y. P., Galloway, A. C., Mignatti, P. & Pintucci, G. Protein targets of inflammatory serine proteases and cardiovascular disease. *J Inflamm (Lond)* **7**, 45 (2010).
- Safavi, F. & Role, R. A. of serine proteases in inflammation: Bowman-Birk protease inhibitor (BBI) as a potential therapy for autoimmune diseases. *Exp. Mol. Pat.* **93**, 428–433 (2012).
- Armstrong, W. B. *et al.* Clinical modulation of oral leukoplakia and protease activity by Bowman-Birk inhibitor concentrate in a phase IIa chemoprevention trial. *Clinical cancer research: an official journal of the American Association for Cancer Research* **6**, 4684–4691 (2000).
- Mehdad, A. *et al.* A Bowman-Birk inhibitor induces apoptosis in human breast adenocarcinoma through mitochondrial impairment and oxidative damage following proteasome 20S inhibition. *Cell death discovery* **2**, 15067, <https://doi.org/10.1038/cddiscovery.2015.67> (2016).
- Clemente, A. & Arques Mdel, C. Bowman-Birk inhibitors from legumes as colorectal chemopreventive agents. *World journal of gastroenterology* **20**, 10305–10315, <https://doi.org/10.3748/wjg.v20.i30.10305> (2014).
- X-FJ., V. M. Trypsin and chymotrypsin inhibitor from black-eyed pea (*V. Sinensis* L. I). Purification and partial characterization. *An Acad Bras Cienc.* **38**, 553–566 (1966).
- Ventura, M. M. M. C. O. & Morhy, L. A trypsin and chymotrypsin inhibitor from black-eyed pea (*Vigna sinensis* L.). VI. Isolation and properties of complexes with trypsin and chymotrypsin. *An. Acad. Bras. Cienc* **47**, 335–346 (1975).
- Morhy, L. & Ventura, M. M. The complete amino acid sequence of the *Vigna unguiculata* (L.) Walp. seed trypsin and chymotrypsin inhibitor. *Anais da Academia Brasileira de Ciencias* **59**, 71–81 (1987).
- Fachetti, H. C. S. M. K. & Ventura, M. M. Thermodynamics of the black-eyed pea trypsin and chymotrypsin inhibitor. *An. Acad. Bras. Cienc* **56**, 311–317 (1984).
- de Freitas, S. M., Ikemoto, H. & Ventura, M. M. Thermodynamics of the binding of chymotrypsin with the black-eyed pea trypsin and chymotrypsin inhibitor (BTCl). *Journal of protein chemistry* **18**, 307–313 (1999).
- de Freitas, S. M. *et al.* Analysis of the black-eyed pea trypsin and chymotrypsin inhibitor-alpha-chymotrypsin complex. *FEBS letters* **409**, 121–127 (1997).
- Barbosa, J. A. *et al.* Crystal structure of the Bowman-Birk Inhibitor from *Vigna unguiculata* seeds in complex with beta-trypsin at 1.55 Å resolution and its structural properties in association with proteinases. *Biophysical journal* **92**, 1638–1650, <https://doi.org/10.1529/biophysj.106.090555> (2007).
- Silva, L. P., Bloch C. L. J. S. Jr & Freitas, S. M. Thermal stability of a black eyed pea trypsin/chymotrypsin inhibitor (BTCl). *Protein Pept Lett* **7**, 397–401 (2001).
- Carvalho, A. F. *et al.* BTCl enhances guanylin-induced natriuresis and promotes renal glomerular and tubular effects. *Brazilian journal of biology = Revista brasileira de biologia* **68**, 149–154 (2008).
- da Cunha Moraes Alvares, A. *et al.* Bowman-Birk protease inhibitor from *Vigna unguiculata* seeds enhances the action of bradykinin-related peptides. *Molecules (Basel, Switzerland)* **19**, 17536–17558, <https://doi.org/10.3390/molecules191117536> (2014).
- Law, M. R., Morris, J. K. & Wald, N. J. Use of blood pressure lowering drugs in the prevention of cardiovascular disease: meta-analysis of 147 randomised trials in the context of expectations from prospective epidemiological studies. *BMJ (Clinical research ed.)* **338**, b1665, <https://doi.org/10.1136/bmj.b1665> (2009).
- Bremner, A. D. Antihypertensive medication and quality of life—silent treatment of a silent killer? *Cardiovascular drugs and therapy* **16**, 353–364 (2002).

25. Manso, M. E. G., Biffi, E. C. A. & Gerardi, T. J. Prescrição inadequada de medicamentos a idosos portadores de doenças crônicas em um plano de saúde no município de São Paulo, Brasil. *Rev. Bras. Geriatr. Gerontol* **18**, 151–164, <https://doi.org/10.1590/1809-9823.2015.14056> (2015).
26. Chen, Z. Y. *et al.* Anti-hypertensive nutraceuticals and functional foods. *Journal of agricultural and food chemistry* **57**, 4485–4499, <https://doi.org/10.1021/jf900803r> (2009).
27. Aluko, R. E. Antihypertensive peptides from food proteins. *Annual review of food science and technology* **6**, 235–262, <https://doi.org/10.1146/annurev-food-022814-015520> (2015).
28. Yang, H.-Y., Yang, S.-C., Chen, J.-R., Tzeng, Y.-H. & Han, B.-C. Soybean protein hydrolysate prevents the development of hypertension in spontaneously hypertensive rats. Vol. 92 (2004).
29. Aluko, R. Determination of Nutritional and Bioactive Properties of Peptides. In *Enzymatic Pea, Chickpea, and Mung Bean Protein Hydrolysates*. Vol. 91 (2008).
30. Cicero, A. F. G., Fogacci, F. & Colletti, A. Potential role of bioactive peptides in prevention and treatment of chronic diseases: a narrative review. *British journal of pharmacology* **174**, 1378–1394, <https://doi.org/10.1111/bph.13608> (2017).
31. Daskaya-Dikmen, C., Yucetepe, A., Karbancioglu-Guler, F., Daskaya, H. & Ozcelik, B. Angiotensin-I-Converting Enzyme (ACE)-Inhibitory Peptides from Plants. *Nutrients* **9**, <https://doi.org/10.3390/nu9040316> (2017).
32. Fernandes, J. P. C. *et al.* Crystallographic structure of a complex between trypsin and a nonapeptide derived from a Bowman-Birk inhibitor found in *Vigna unguiculata* seeds. *Archives of biochemistry and biophysics* **665**, 79–86, <https://doi.org/10.1016/j.abb.2019.02.013> (2019).
33. Joanitti, G. A., Azevedo, R. B. & Freitas, S. M. Apoptosis and lysosome membrane permeabilization induction on breast cancer cells by an anticarcinogenic Bowman-Birk protease inhibitor from *Vigna unguiculata* seeds. *Cancer letters* **293**, 73–81, <https://doi.org/10.1016/j.canlet.2009.12.017> (2010).
34. Clemente, A., Carmen Marin-Manzano, M., Jimenez, E., Carmen Arques, M. & Domoney, C. The anti-proliferative effect of T11B, a major Bowman-Birk iso-inhibitor from pea (*Pisum sativum* L.), on HT29 colon cancer cells is mediated through protease inhibition. *The British journal of nutrition* **108**(Suppl 1), S135–144, <https://doi.org/10.1017/s000711451200075x> (2012).
35. Clemente, A., Sonnante, G. & Domoney, C. Bowman-Birk inhibitors from legumes and human gastrointestinal health: current status and perspectives. *Current protein & peptide science* **12**, 358–373 (2011).
36. Marin-Manzano, M. C., Ruiz, R., Jimenez, E., Rubio, L. A. & Clemente, A. Anti-carcinogenic soybean Bowman-Birk inhibitors survive faecal fermentation in their active form and do not affect the microbiota composition *in vitro*. *The British journal of nutrition* **101**, 967–971 (2009).
37. Souza Lda, C. *et al.* Effects of an anticarcinogenic Bowman-Birk protease inhibitor on purified 20S proteasome and MCF-7 breast cancer cells. *PLoS one* **9**, e86600, <https://doi.org/10.1371/journal.pone.0086600> (2014).
38. Akif, M. *et al.* Structural characterization of angiotensin I-converting enzyme in complex with a selenium analogue of captopril. *Febs J.* **278**, 3644–3650 (2011).
39. Erlanger, B. F., Kokowsky, N. & Cohen, W. The preparation and properties of two new chromogenic substrates of trypsin. *Archives of biochemistry and biophysics* **95**, 271–278 (1961).
40. Natesh, R., Schwager, S. L., Sturrock, E. D. & Acharya, K. R. Crystal structure of the human angiotensin-converting enzyme-lisinopril complex. *Nature* **421**, 551–554, <https://doi.org/10.1038/nature01370> (2003).
41. Tamargo, J., Duarte, J. & Ruilope, L. M. New antihypertensive drugs under development. *Current medicinal chemistry* **22**, 305–342 (2015).
42. Wroblewska, M. *et al.* Marsanidine and 7-Me-marsanidine, the new hypotensive imidazolines augment sodium and urine excretion in rats. *Pharmacological reports: PR* **65**, 1025–1032 (2013).
43. Esteves, G. F. *et al.* Crystallization, data collection and processing of the chymotrypsin-BTCI-trypsin ternary complex. *Acta crystallographica. Section F, Structural biology and crystallization communications* **63**, 1087–1090, <https://doi.org/10.1107/s1744309107056424> (2007).
44. De Honda *et al.* Interface Interactions of the Bowman-Birk Inhibitor BTCI in a Ternary Complex with Trypsin and Chymotrypsin Evaluated by Semiempirical Quantum Mechanical Calculations. *European Journal of Organic Chemistry*, 5203–5211, <https://doi.org/10.1002/ejoc.201800754> (2018).
45. Gariani, T. & Leatherbarrow, R. J. Stability of protease inhibitors based on the Bowman-Birk reactive site loop to hydrolysis by proteases. *The journal of peptide research: official journal of the American Peptide Society* **49**, 467–475 (1997).
46. Nishino, N., Aoyagi, H., Kato, T. & Izumiya, N. Synthesis and activity of nonapeptide fragments of soybean Bowman-Birk inhibitor. *Experientia* **31**, 410–412 (1975).
47. Nakamura, Y., Yamamoto, N., Sakai, K. & Takano, T. Antihypertensive effect of sour milk and peptides isolated from it that are inhibitors to angiotensin I-converting enzyme. *Journal of dairy science* **78**, 1253–1257, [https://doi.org/10.3168/jds.S0022-0302\(95\)76745-5](https://doi.org/10.3168/jds.S0022-0302(95)76745-5) (1995).
48. Iwaniak, A., Minkiewicz, P., Darewicz, M., Sieniawski, K. & Starowicz, P. BIOPEP database of sensory peptides and amino acids. *Food research international (Ottawa, Ont.)* **85**, 155–161, <https://doi.org/10.1016/j.foodres.2016.04.031> (2016).
49. Anna Iwaniak, P. M. & Małgorzata Darewicz. Food-Originating ACE Inhibitors, Including Antihypertensive Peptides, as Preventive Food Components in Blood Pressure Reduction. *Comprehensive Reviews in Food Science and Food Safety* **13**, 114–134, <https://doi.org/10.1111/1541-4337.12051> (2014).
50. Koyama, M. *et al.* Purification and identification of antihypertensive peptides from fermented buckwheat sprouts. *Journal of agricultural and food chemistry* **61**, 3013–3021, <https://doi.org/10.1021/jf305157y> (2013).
51. Daniel Martínez-Maqueda, B. M. & Recio, I. and Blanca Hernández-Ledesma. Antihypertensive peptides from food proteins: a review. *Food & Function* **3**, 350–361, <https://doi.org/10.1039/c2fo10192k> (2012).
52. Guyton, A. C. Blood pressure control—special role of the kidneys and body fluids. *Science (New York, N.Y.)* **252**, 1813–1816 (1991).
53. Aperia, A. C., Broberger, C. G. & Soderlund, S. Relationship between renal artery perfusion pressure and tubular sodium reabsorption. *The American journal of physiology* **220**, 1205–1212, <https://doi.org/10.1152/ajplegacy.1971.220.5.1205> (1971).
54. Guyton, A. C. *et al.* Arterial pressure regulation. Overriding dominance of the kidneys in long-term regulation and in hypertension. *The American journal of medicine* **52**, 584–594 (1972).
55. Peach, M. J. Renin-angiotensin system: biochemistry and mechanisms of action. *Physiological reviews* **57**, 313–370, <https://doi.org/10.1152/physrev.1977.57.2.313> (1977).
56. Reudelhuber, T. L. The renin-angiotensin system: peptides and the enzymes beyond angiotensin II. *Current opinion in nephrology and hypertension* **14**, 155–159 (2005).
57. Yang, H. Y., Erdos, E. G. & Levin, Y. A dipeptidyl carboxypeptidase that converts angiotensin I and inactivates bradykinin. *Biochimica et biophysica acta* **214**, 374–376 (1970).
58. Beuschlein, F. Regulation of aldosterone secretion: from physiology to disease. *European journal of endocrinology* **168**, R85–93, <https://doi.org/10.1530/eje-13-0263> (2013).
59. Godecke, A. *et al.* Coronary hemodynamics in endothelial NO synthase knockout mice. *Circulation research* **82**, 186–194 (1998).
60. Nunes, A. D. *et al.* Influence of antihypertensive drugs on aortic and coronary effects of Ang-(1-7) in pressure-overloaded rats. *Brazilian journal of medical and biological research = Revista brasileira de pesquisas medicas e biologicas* **50**, e5520, <https://doi.org/10.1590/1414-431x20165520> (2017).

61. Souza, A. P. *et al.* Angiotensin II type 1 receptor blockade restores angiotensin-(1-7)-induced coronary vasodilation in hypertrophic rat hearts. *Clinical science (London, England: 1979)* **125**, 449–459, <https://doi.org/10.1042/cs20120519> (2013).
62. Massion, P. B. & Balligand, J. L. Modulation of cardiac contraction, relaxation and rate by the endothelial nitric oxide synthase (eNOS): lessons from genetically modified mice. *The Journal of physiology* **546**, 63–75 (2003).
63. Rastaldo, R. *et al.* Nitric oxide and cardiac function. *Life sciences* **81**, 779–793, <https://doi.org/10.1016/j.lfs.2007.07.019> (2007).
64. Zhang, Y. H., Jin, C. Z., Jang, J. H. & Wang, Y. Molecular mechanisms of neuronal nitric oxide synthase in cardiac function and pathophysiology. *The Journal of physiology* **592**, 3189–3200, <https://doi.org/10.1113/jphysiol.2013.270306> (2014).
65. Ventura, M. M., Xavier Filho, J., Moreira, R. A., Aquino Ade, M. & Pinheiro, P. A. A trypsin and chymotrypsin inhibitor from black-eyed pea (*Vigna sinensis* L.). II. Further studies on its characterization and a reevaluation of earlier results. *Anais da Academia Brasileira de Ciências* **43**, 233–242 (1971).
66. B, M. Solid-Phase Peptide Synthesis. *Peptides: Synthesis, Structures, and Applications*, 93–169 (1995).
67. Fields, G. B. & Noble, R. L. Solid phase peptide synthesis utilizing 9-fluorenylmethoxycarbonyl amino acids. *International journal of peptide and protein research* **35**, 161–214 (1990).
68. Kaiser, E., Colescott, R. L., Bossinger, C. D. & Cook, P. I. Color test for detection of free terminal amino groups in the solid-phase synthesis of peptides. *Analytical biochemistry* **34**, 595–598 (1970).
69. Murphy, J. B. K. M.W. A note on spectrophotometric determination of proteins in dilute solution. *Biochim. Biophys. Acta* **45**, 382–384 (1960).
70. Morrison, J. F. The slow-binding and slow, tight-binding inhibition of enzyme catalyzed reactions. *Trends Biochem. Sci.* **7**, 102–105 (1982).
71. Hayakari, M., Kondo, Y. & Izumi, H. A rapid and simple spectrophotometric assay of angiotensin-converting enzyme. *Analytical biochemistry* **84**, 361–369 (1978).
72. Grosdidier, A., Zoete, V. & Michielin, O. EADock: docking of small molecules into protein active sites with a multiobjective evolutionary optimization. *Proteins* **67**, 1010–1025, <https://doi.org/10.1002/prot.21367> (2007).
73. O'Boyle, N. M. *et al.* Open Babel: An open chemical toolbox. *Journal of cheminformatics* **3**, 33, <https://doi.org/10.1186/1758-2946-3-33> (2011).
74. Bell, R. M., Mocanu, M. M. & Yellon, D. M. Retrograde heart perfusion: the Langendorff technique of isolated heart perfusion. *Journal of molecular and cellular cardiology* **50**, 940–950, <https://doi.org/10.1016/j.yjmcc.2011.02.018> (2011).

Acknowledgements

This work was supported by Conselho Nacional de Desenvolvimento Científico e Tecnológico (CNPq) grants 304733/2019-9, 423875/2016-7, 306132/2016-8, 477832/2010-5, 483411/2012-4, 447496/2014-0 and 406789/2016-9; Fundação de Amparo à Pesquisa do Estado de Goiás (FAPEG) grant 2012/0055431086; Fundação de Desenvolvimento de Tecnópolis (Funtec) grant 001/2016 and Fundação de Empreendimentos Científicos e Tecnológicos (FINATEC).

Author contributions

S.M. de F., G.R.P. and C.H.C. planned the study; M.A.G. de F., N.O.A., A. da C.M.A., S.A. de O., D.E.H., L.M.N., A.S.M.B., C.N.R.P., M.H.S.R., and S.M. de F. performed the experiments; M.A.G. de F., N.O.A., A. da C.M.A., S.A. de O., A.M., M.H.S.R., L.M.N., A.S.M.B., C.N.R.P., C.H.C., G.R.P. and S.M. de F. analyzed data; S.M. de F., G.R.P. and C.H.C. supervised the study; S.M. de F., A.M., G.R.P. and C.H.C. wrote the manuscript.

Competing interests

The authors declare no competing interests.

Additional information

Correspondence and requests for materials should be addressed to G.R.P. or S.M.d.F.

Reprints and permissions information is available at www.nature.com/reprints.

Publisher's note Springer Nature remains neutral with regard to jurisdictional claims in published maps and institutional affiliations.



Open Access This article is licensed under a Creative Commons Attribution 4.0 International License, which permits use, sharing, adaptation, distribution and reproduction in any medium or format, as long as you give appropriate credit to the original author(s) and the source, provide a link to the Creative Commons license, and indicate if changes were made. The images or other third party material in this article are included in the article's Creative Commons license, unless indicated otherwise in a credit line to the material. If material is not included in the article's Creative Commons license and your intended use is not permitted by statutory regulation or exceeds the permitted use, you will need to obtain permission directly from the copyright holder. To view a copy of this license, visit <http://creativecommons.org/licenses/by/4.0/>.

© The Author(s) 2020