

Corrigendum to: Liquid Formulation of AbobotulinumtoxinA: A 6-Month, Phase 3, Double-Blind, Randomized, Placebo-Controlled Study of a Single Treatment, Ready-to-Use Toxin for Moderate-to-Severe Glabellar Lines

Benjamin Ascher, MD; Berthold Rzany, MD, ScM; Philippe Kestemont, MD; Said Hilton, MD; Marc Heckmann, MD; Isaac Bodokh, MD; Ernst Magnus Noah, MD, PhD; Dominique Boineau, MD; Martina Kerscher, MD; Magali Volteau, PhD; Philippe Le Berre, MD; and Philippe Picaut, PharmD

Aesthetic Surgery Journal
2021, Vol 41(11) 1338
© 2021 The Aesthetic Society.
This is an Open Access article distributed under the terms of the Creative Commons Attribution-NonCommercial License (<http://creativecommons.org/licenses/by-nc/4.0/>), which permits non-commercial re-use, distribution, and reproduction in any medium, provided the original work is properly cited. For commercial re-use, please contact journals.permissions@oup.com
DOI:10.1093/asj/sjab111
www.aestheticsurgeryjournal.com

OXFORD
UNIVERSITY PRESS

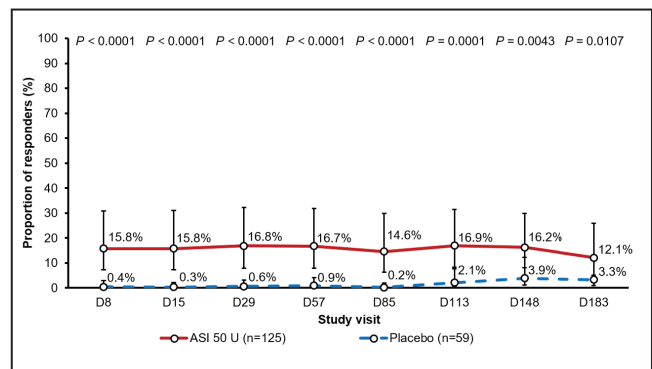
In the article “Liquid Formulation of AbobotulinumtoxinA: A 6-Month, Phase 3, Double-Blind, Randomized, Placebo-Controlled Study of a Single Treatment, Ready-to-Use Toxin for Moderate-to-Severe Glabellar Lines” by Ascher et al in *Aesthet Surg J*, sjz003, <https://doi.org/10.1093/asj/sjz003>, errors were noted and listed in this corrigendum.

Under the “Proportion of Responders at Each Posttreatment Visit According to the Investigator or Patient” heading, in the “Efficacy” section, the following texts should read: “The proportion of responders in the ILA of GL at rest was relatively stable up to Day 57; between Day 85 and Day 183, the responder rate was more variable over time. The proportion of responders treated with ASI was consistently statistically significant compared with placebo ($P < 0.0001 - 0.0015$) across study visits (Figure 2D).” instead of “The proportion of responders in the ILA of GL at rest remained relatively stable over time and was consistently statistically significant compared with placebo ($P < 0.0001-0.0107$) across study visits (Figure 2D).”

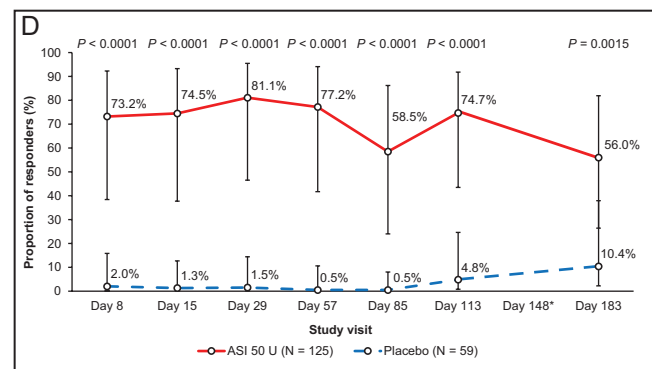
The following sentence has been added to the legend of Figure 2: “Proportion of responders was not calculable due to quasi-complete separation of data point.”

Figure 2D has been updated as follows:

Previous version:



Corrected version:



These errors have now been corrected.