

openheart Sympathetic autonomic dysfunction and impaired cardiovascular performance in higher risk surgical patients: implications for perioperative sympatholysis

John Whittle,¹ Alexander Nelson,² James M Otto,³ Robert C M Stephens,⁴ Daniel S Martin,³ J Robert Sneyd,⁵ Richard Struthers,⁵ Gary Minto,⁵ Gareth L Ackland^{1,6,7}

To cite: Whittle J, Nelson A, Otto JM, *et al.* Sympathetic autonomic dysfunction and impaired cardiovascular performance in higher risk surgical patients: implications for perioperative sympatholysis. *Open Heart* 2015;**2**:e000268. doi:10.1136/openhrt-2015-000268

► Additional material is available. To view please visit the journal (<http://dx.doi.org/10.1136/openhrt-2015-000268>).

Received 17 March 2015
Revised 8 June 2015
Accepted 18 June 2015



CrossMark

For numbered affiliations see end of article.

Correspondence to
Dr Gareth L Ackland;
g.ackland@ucl.ac.uk

ABSTRACT

Objective: Recent perioperative trials have highlighted the urgent need for a better understanding of why sympatholytic drugs intended to reduce myocardial injury are paradoxically associated with harm (stroke, myocardial infarction). We hypothesised that following a standardised autonomic challenge, a subset of patients may demonstrate excessive sympathetic activation which is associated with exercise-induced ischaemia and impaired cardiac output.

Methods: Heart rate rise during unloaded pedalling (zero workload) prior to the onset of cardiopulmonary exercise testing (CPET) was measured in 2 observation cohorts of elective surgical patients. The primary outcome was exercise-evoked, ECG-defined ischaemia (>1 mm depression; lead II) associated with an exaggerated increase in heart rate (EHRR ≥ 12 bpm based on prognostic data for all-cause cardiac death in preceding epidemiological studies). Secondary outcomes included cardiopulmonary performance (oxygen pulse (surrogate for left ventricular stroke volume), peak oxygen consumption (VO_{2peak}), anaerobic threshold (AT)) and perioperative heart rate.

Results: EHRR was present in 40.4–42.7% in both centres (n=232, n=586 patients). Patients with EHRR had higher heart rates perioperatively (p<0.05). Significant ST segment depression during CPET was more common in EHRR patients (relative risk 1.7 (95% CI 1.3 to 2.1); p<0.001). EHRR was associated with 11% (95%CI 7% to 15%) lower predicted oxygen pulse (p<0.0001), consistent with impaired left ventricular function.

Conclusions: EHRR is common and associated with ECG-defined ischaemia and impaired cardiac performance. Perioperative sympatholysis may further detrimentally affect cardiac output in patients with this phenotype.

INTRODUCTION

Perioperative pharmacological interventions aimed at attenuating sympathetic activation to

KEY QUESTIONS

What is already known about this subject?

► POISE-1 and POISE-2 trials reported that sympatholytic drugs (metoprolol, clonidine) aimed at reducing perioperative myocardial infarction paradoxically increase the risk of hypotension and, for metoprolol (POISE-1), death. Patients with propensity for tachycardia are more likely to receive such drugs, both in trials and routine perioperative practice.

What does this study add?

► Using cardiopulmonary exercise testing, we identify patients with a propensity for tachycardia in whom cardiac performance is already significantly impaired. Administering sympatholytic drugs to these patients would be expected to further compromise cardiac output, resulting in hypotension and consequently further deleterious outcomes.

How might this impact on clinical practice?

► Identifying patients with this exaggerated tachycardia phenotype will enable more personalised perioperative monitoring and treatment in an effort to gain the benefit of sympatholysis (reduced myocardial injury) while mitigating risks (hypotension).

reduce myocardial ischaemia¹ have met with apparently paradoxical results. Most notably, the largest series of randomised clinical trials—Perioperative Ischemic Evaluation (POISE)-1² and POISE-2³—found that both metoprolol and clonidine resulted in more frequent episodes of hypotension. Sympatholysis-induced haemodynamic instability may result in reduced cardiac output, suboptimal organ perfusion, and consequently may explain the increase in stroke² and non-fatal cardiac

arrest.³ Thus, the trade-off between the therapeutic benefit and detrimental off-target effects associated with perioperative sympathectomy requires further investigation.⁴⁻⁶ These data also suggest that identifying patients at risk of more extreme, or persistent, sympathetic activation could improve the risk-benefit ratio of perioperative sympathectomy through a more targeted approach.⁷

As a potent trigger of increased heart rate and acute endothelial dysfunction,⁸ exaggerated sympathetic outflow following minor stress may be an important—though underappreciated—contributor to postoperative morbidity. Excessive sympathoadrenal activation directly causes catecholaminergic-mediated impairment of cardiac, regulatory mechanisms that contribute to the pathophysiology of diverse disease states.⁹⁻¹⁴ A minority of apparently otherwise healthy individuals who exhibit increases in heart rate as a result of the stress evoked by the thought of vigorous exercise are at increased risk of sudden cardiac, and all-cause, death.¹⁵

We therefore hypothesised that exaggerated heart rate increases prior to the onset of routinely performed preoperative cardiopulmonary exercise testing (CPET) would be associated with ECG evidence for ischaemia, impaired cardiopulmonary performance and inferior postoperative outcome.

METHODS

Patient populations

Patients were enrolled at University College London Hospitals and Derriford Hospital, Plymouth, UK, having obtained IRB approval (MREC: 11/H0805/58). Informed written consent was obtained from patients undergoing preoperative CPET as routinely requested by their clinical teams prior to major elective surgery. Adherence to STROBE guidelines is documented in online supplementary table S1. Inclusion criteria were any surgical patient referred for CPET by their primary surgical and/or anaesthesia team. Exclusion criteria were according to American Thoracic Society (ATS) guidelines.¹⁶

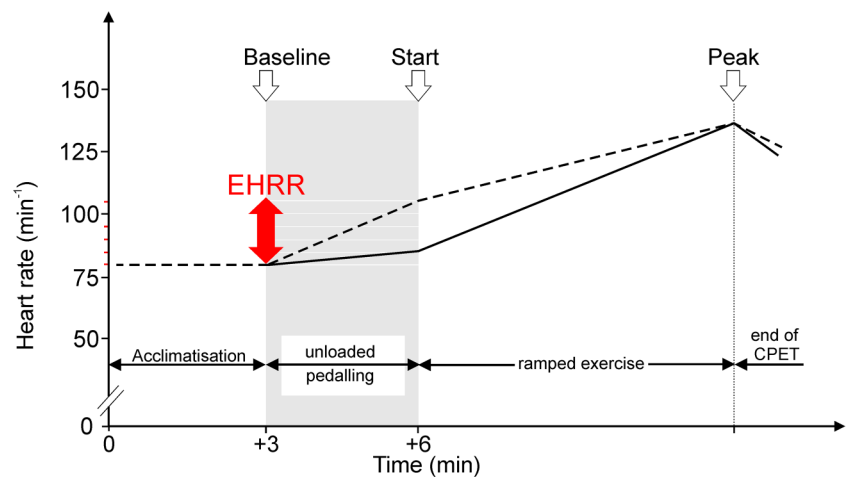
Cardiopulmonary exercise testing

Patients completed symptom-limited maximal CPET as part of their routine preoperative assessment on a stationary cycle ergometer (Zan, nSpire, Colorado, USA; Lode, Groningen, the Netherlands). Heart rate readings were obtained via ECG with the patient sitting on the cycle ergometer. Figure 1 summarises the different stages of the CPET protocol. Patients acclimatised by sitting on the cycle ergometer for 3 min, prior to the start of exercise. Patients then undertook 3 min of unloaded pedalling, prior to the initiation of ramped exercise. Non-invasive blood pressure was measured at the start (zero workload) and at the end of CPET. We assessed heart rate rise as the difference between the heart rate at rest and the heart rate measured just before starting loaded pedalling during the exercise test protocol (ie, after 3 min of unloaded (0 W) exercise). We analysed these data by quartiles, and also defined EHRR as an abnormal exaggerated heart rate ≥ 12 bpm,¹⁵ based on previous data showing an association between stress-evoked increases in heart rate before the onset of exercise and an increased risk of sudden cardiac and all-cause cardiovascular death.¹⁵ All EHRR data were analysed blinded to outcomes.

Assessment of exercise-evoked ischaemia

Continuous 12-lead ECG recordings were made throughout the CPET period to enable the detection of ischaemia and/or development of dysrhythmias. ST-segment depression was quantified in lead II, which is superior for detection of atrial dysrhythmias and more easily obtained with conventional monitors.¹⁷ Lead II ST changes were defined as abnormal when ST depression of 0.1 mV (1 mm) or more occurred, in accordance with current American College of Cardiology guidelines¹⁸ and consistent with previous studies identifying that ST-segment depression to levels ≥ 1 mm independently predict future cardiac events in asymptomatic populations.¹⁹ We also assessed ST changes by heart rate adjustment, which increases the diagnostic accuracy of the exercise ECG.²⁰ The ST–heart rate (ST/HR) index was

Figure 1 Schematic showing different phases of CPET and variables recorded. CPET, cardiopulmonary exercise testing; EHRR, exaggerated heart rate rise.



therefore calculated, by dividing the difference in ST depression at peak exercise by the exercise-induced increase in heart rate. The development at any time during the CPET of atrial and/or ventricular dysrhythmias, including ectopic beats, was also noted.

CPET performance

Anaerobic threshold (AT), which is associated with increased postoperative morbidity and mortality,^{21–26} was assessed. AT was determined by two independent assessors blinded to EHRR and according to published guidelines using the modified V-slope method and confirmed by ventilatory equivalents for carbon dioxide (\dot{V}_E/\dot{V}_{CO_2}) and oxygen (\dot{V}_E/\dot{V}_{O_2}).^{27–28} Peak oxygen consumption ($\dot{V}_{O_2\text{ peak}}$), oxygen pulse and (\dot{V}_E/\dot{V}_{CO_2}) were also recorded. Age, gender and weight-specific predicted values were calculated for $\dot{V}_{O_2\text{ peak}}$ ²⁹ and oxygen pulse,³⁰ a robust measure of left ventricular stroke volume.^{31–32}

Perioperative heart rate

We interrogated serial heart rates in patients (n=54) who had heart rate rise measured during CPET as part of their enrolment into the Post-Operative Morbidity-Oxygen delivery trial (POM-O) randomised controlled trial.³³ Mean heart rate over a 5 min period was compared preoperatively (5 min prior to induction), intraoperatively (end of operation prior to cessation of anaesthesia) and recovery (~30 min after extubation, prior to start of trial protocol).

Statistics

Baseline characteristics of participants were compared according to quartile using analysis of variance (ANOVA; quantitative variables). For continuous data, tests for skewness were performed to assess normality and, where appropriate, the data were analysed with ANOVA. Non-parametric data were analysed with the Kruskal-Wallis test. The Gehan-Breslow-Wilcoxon method was used to analyse hospital stay since this gives more weight to accelerated hospital discharge at earlier time points, which is most relevant to the hypothesis that sympathetic autonomic dysfunction increases the risk of early postoperative morbidity and hence delayed discharge. All reported p values are two-sided, with significance set at $p \leq 0.05$. Statistical analyses were performed using NCSS V.8 (Kaysville, Utah, USA).

Sample size calculation

The primary outcome was ST depression ≥ 1 mm detected during CPET. Using the VISION study definition of myocardial injury after non-cardiac surgery as a guide,¹ which reported a myocardial infarction rate of ~8% patients undergoing non-cardiac surgery, we estimated that significant ST depression would occur in twice as many patients with EHRR. Having established a prevalence of EHRR ~34% in the Plymouth cohort before analysing ST changes, we catered for a 10% drop-out rate (failure to complete CPET, difficulty in determining AT and poor

Table 1 Distribution of heart rate changes while patients acclimatised to the exercise bike conditions at zero workload (unloaded cycling)

Heart rate rise preloaded exercise (95% CI)	UCLH	Plymouth
Median	9 (9 to 10)	10 (9 to 11)
25th centile	5 (4 to 6)	5 (4 to 6)
75th centile	16 (15 to 17)	17 (15 to 19)

Data are shown as median (95% CIs).

quality ECG data) by aiming to recruit 895 patients undergoing CPET (α of 0.05; power of 80%).

RESULTS

Eight hundred and eighteen patients were recruited across both centres. Changes in heart rate while patients acclimatised to the exercise bike conditions at zero workload (unloaded cycling) were similar between centres (table 1; figure 2).

Upper tertile values were similar to previous data showing that an abnormal EHRR ≥ 12 bpm was associated with an increased risk of sudden cardiac and all-cause cardiovascular death.¹⁵ We therefore explored this upper tertile cut-off value in subsequent analyses. In the UCLH cohort, 237/586 (40.4%) demonstrated EHRR ≥ 12 bpm (table 2). Cardiovascular drug therapy and co-morbidities were similar between patients with, or without, EHRR (see online supplementary tables S2 and S3). We did not find any relationship between EHRR ≥ 12 bpm and the Revised Cardiac Risk Index (relative risk of RCRI ≥ 2 : 1.00 (95% CI 0.77 to 1.29); $p=0.98$). We observed similar results in a second (Plymouth) cohort, where 99/232 (42.7%) patients had EHRR (table 2).

We found that baseline and peak heart rates during exercise were not associated with EHRR (table 3). Consistent with this hyper-adrenergic pre-exercise phenotype, both systolic and diastolic blood pressure (measured before CPET) were higher in patients with EHRR (table 4). Although peak systolic blood pressure during exercise was similar between groups, the increase

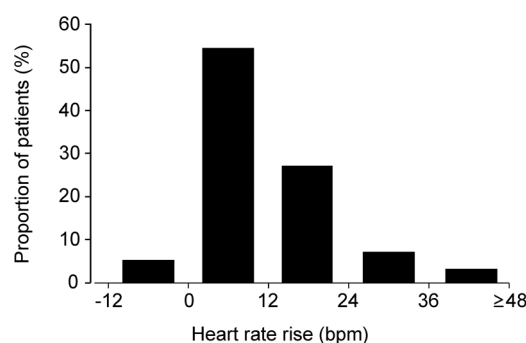


Figure 2 Distribution of changes in heart rate prior to loaded exercise.

Table 2 Demographics for both cohorts, stratified by heart rate change during unloaded cycling (zero workload) of patients acclimatised to the exercise bike conditions

	UCLH		Plymouth	
	Normal	EHRR	Normal	EHRR
Number (%)	349 (59.6)	237 (40.4)	133 (57.3)	99 (42.7)
Age (years)	61 (60 to 63)	65 (63 to 66)	65 (63 to 68)	67 (65 to 70)
Gender (male; %)	249 (71.3)	99 (41.8)	87 (65.4)	44 (45.8)
BMI (kg/m ²)	27.0 (26.4 to 27.5)	28.5 (27.5 to 29.4)	27.5 (26.7 to 28.2)	29.1 (28.2 to 30.0)
Malignancy (n; %)	120 (45.6)	89 (50.9)	103 (77.4)	72 (75)

Data are shown as median (95% CIs).

Data analysed by one-way ANOVA or Fisher's exact test.

ANOVA, analysis of variance; BMI, body mass index; EHRR, exaggerated heart rate rise. University College London Hospitals NHS Trust.

in systolic pressure from baseline was lower in patients with EHRR (table 4).

Exercise-evoked ischaemia

In both centres, similar proportions of patients (27.3–40.4%) demonstrated ST-segment depression ≥ 1 mm during CPET. Continuous ECG recordings revealed an association between EHRR and ST-segment depression ≥ 1 mm in both cohorts (table 5). Across both centres, EHRR was associated with an increased relative risk of developing significant ST depression (relative risk: 1.7 (95% CI 1.3 to 2.1); $p < 0.001$). Adjusting for changes in heart rate during exercise using the ST–heart rate (ST/HR) index, we again observed greater ST depression in EHRR patients (table 5). EHRR was not associated with exercise-evoked atrial and/or ventricular dysrhythmias (data not shown).

Preoperative cardiopulmonary performance

Given we found an association between EHRR and ECG changes compatible with coronary artery dysfunction, we predicted that this occult sympathetic autonomic dysfunction phenotype should also be associated with impaired cardiopulmonary reserve. In addition to lower $\dot{V}_{O_2 \text{ peak}}$, we found that oxygen pulse—a robust surrogate for left ventricular function—was $>10\%$ lower in patients with EHRR (table 6). Left ventricular performance was more likely to fail to meet age-, weight and gender

predicted norms in patients with EHRR (relative risk 1.26 (95% CI 1.14 to 1.39); $p < 0.001$).

Perioperative data

Patients with preoperative EHRR ($n=22/54$) had higher heart rates throughout the perioperative period ($p=0.017$; figure 3A). Outcomes data from the Plymouth and UCLH cohorts showed that EHRR was associated with longer hospital stay following major surgery ($n=566$; $p=0.03$, by Gehan-Breslow-Wilcoxon survival analysis; figure 3B).

DISCUSSION

These data demonstrate from two separate cohorts of surgical patients that the sympathetic autonomic response elicited during unloaded pedaling prior to ramped exercise (EHRR) is associated with increased risk of ECG-defined ischaemia, inferior cardiac performance and prolonged hospital stay. There is compelling physiological evidence to show that EHRR is chiefly due to mental stress. Similar rises in heart rate occur in patients sitting on a bike before exercise, but not pedalling, which are not accounted for by changes in posture.¹⁵ These data strongly suggest that EHRR is not due to pedalling-induced increased oxygen consumption, but rather to sympathetic activation due to stress. Our data add support to this assertion, since low aerobic capacity was evident regardless of presence/absence of

Table 3 CPET heart rate data, stratified by heart rate change during unloaded cycling (zero workload) of patients acclimatised to the exercise bike conditions

	Normal	EHRR	p Value
Pre-exercise			
Resting heart rate (per min)	82 (81 to 84)	82 (80 to 83)	0.75
Zero workload heart rate (per min)	88 (86 to 89)	104 (101 to 106)	<0.001
Heart rate change, zero workload (per min)	5 (5 to 6)	22 (20 to 23)	<0.001
Exercise			
Peak heart rate during CPET (per min)	134 (132 to 137)	135 (132 to 139)	0.56
Heart rate change, from baseline (per min)	51 (48 to 54)	53 (50 to 56)	0.60

Data are shown as mean (95% CIs).

Data analysed by one-way ANOVA.

ANOVA, analysis of variance; CPET, cardiopulmonary exercise testing; EHRR, exaggerated heart rate rise.

Table 4 Exercise-evoked changes in blood pressure

	Normal	EHRR	p Value
Baseline			
Systolic blood pressure (mm Hg)	144 (142 to 147)	157 (153 to 161)	<0.001
Diastolic blood pressure (mm Hg)	82 (81 to 84)	85 (83 to 87)	0.02
Exercise			
Peak systolic blood pressure (mm Hg)	189 (186 to 193)	192 (188 to 196)	0.22
Peak diastolic blood pressure (mm Hg)	89 (86 to 92)	95 (88 to 102)	0.11
Increase from baseline (systolic; mm Hg)	45 (42 to 48)	34 (31 to 37)	<0.001

Cohort from University College London Hospital: data are shown as mean (95% CIs).

Data analysed by one-way ANOVA.

ANOVA, analysis of variance; EHRR, exaggerated heart rate rise.

EHRR. Many patients express anxiety at the time of CPET, presumably because of uncertainty about their ability to undergo an unfamiliar acute, vigorous physical challenge. This observation is further supported by higher resting blood pressure in patients with EHRR, even though a diagnosis of hypertension was similarly prevalent across the groups. Several studies using a different experimental paradigm have also identified that mental stress alone can trigger silent myocardial ischaemia.^{10–14} It is conceivable—and worthy of future investigation—that mental stressors such as task-oriented tests could similarly identify preoperative patients at the greatest risk of excessive sympathetic activity.

Previous studies have demonstrated that ST-segment depression to levels ≥ 1 mm independently predict future cardiac events in asymptomatic populations.¹⁹ We did not explore early heart rate changes during exercise, which have also been associated with excess cardiovascular risk. As a potent trigger of increased heart rate and acute endothelial dysfunction,⁸ exaggerated sympathetic outflow following minor, including mental, stress may be

an important—though underappreciated—contribution to several morbidities observed commonly in the perioperative setting. Mental stress triggers myocardial ischaemia in patients with coronary artery disease, through pathological vasoconstriction following acetylcholine infusion.^{10–14} A minority of apparently otherwise healthy individuals who exhibit increases in heart rate as a result of the mental stress evoked by the thought of vigorous exercise are at increased risk of sudden cardiac death.¹⁵ In addition to well-documented consequences on myocardial ischaemia, it is increasingly recognised that excessive sympathetic activation can cause extracardiac cellular injury.⁹ High levels of endogenous catecholamines are likely to alter perioperative haemodynamic management, particularly in the absence of flow-guided monitoring.³⁴ Hepatic dysfunction,³⁵ acute lung injury³⁶ and promotion of bacterial overgrowth³⁷ provide direct and/or indirect mechanisms through which sympathetic activation can adversely influence postoperative outcomes. Persistently elevated plasma catecholamine levels also predispose to infection,³⁸ through

Table 5 ST-segment changes in both cohorts

	Normal	EHRR	p Value
ST change (mm)	−0.50 (−0.85 to −0.14)	−0.95 (−1.09 to −0.81)	<0.0001
ST/HR index (mm/min)	−0.01 (−0.02 to −0.01)	−0.02 (−0.03 to −0.02)	<0.0001

Data are shown as mean (95% CIs) for both cohorts.

Data analysed by one-way ANOVA.

ANOVA, analysis of variance; EHRR, exaggerated heart rate rise.

Table 6 Cardiopulmonary exercise testing data

	Normal	EHRR	p Value
Anaerobic threshold (mL/kg/min)	11.1 (10.8 to 11.4)	10.6 (10.2 to 11.1)	0.008
$\dot{V}_{O_2 \text{ peak}}$ (% predicted)	78 (75 to 81)	74 (71 to 77)	0.05
$(\dot{V}_E/\dot{V}_{CO_2})$	30.1 (29.6 to 30.7)	30.2 (29.5 to 30.9)	0.86
Oxygen pulse (% predicted)	95 (93 to 98)	85 (82 to 88)	0.0001

Data are shown as mean (95% CIs) for both cohorts.

Data analysed by one-way ANOVA.

ANOVA, analysis of variance; EHRR, exaggerated heart rate rise; $(\dot{V}_E/\dot{V}_{CO_2})$, ventilatory equivalents for carbon dioxide; $\dot{V}_{O_2 \text{ peak}}$, peak oxygen consumption.

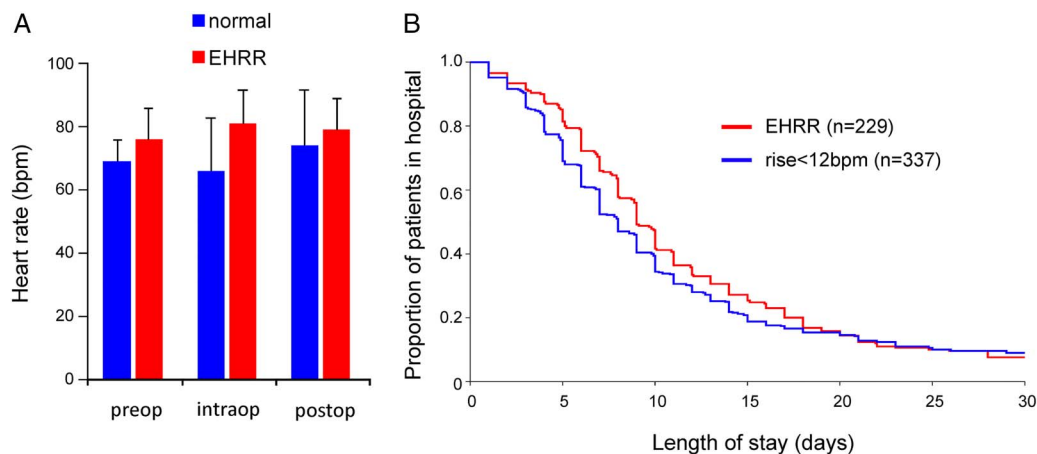


Figure 3 Perioperative associates of exaggerated heart rate responses pre-exercise. (A) Heart rate immediately preoperatively, at end of surgery and 30 min postextubation, stratified by exaggerated heart rate rise (EHRR). Two-way analysis of variance (operation time point \times cardiopulmonary exercise testing heart rate phenotype) showed that EHRR (22/54 patients in POM-O trial) was independently associated with higher heart rates during the perioperative period ($p=0.017$). (B) Kaplan-Meier plot for length of hospital stay following major surgery, stratified by EHRR ($n=566$; $p=0.03$, by Gehan-Breslow-Wilcoxon survival analysis).

dysregulation of adhesion molecules,³⁹ apoptosis⁴⁰ and β -adrenoreceptor-mediated redistribution of lymphocytes from peripheral blood to lymphatic tissue.⁴¹ Consistent with these translational insights, intraoperative tachycardia and hypertension have been associated with postoperative morbidity and prolonged hospital stay after major non-cardiac surgery.⁴²

Strengths of these data are that all analyses were performed blinded to primary and secondary outcomes, in two separate centres. Describing this dysautonomic parameter in the context of a highly phenotyped cardiovascular test enables correlation with comprehensive cardiopulmonary physiological data. Established biological plausibility for this phenomenon and preceding similar findings, albeit with different testing methodology in non-operative patients, lends important support. Interindividual genetic variation in adrenergic receptor and signalling may influence these responses.⁴³ The observational nature and lack of an intervention limit more robust conclusions.

There are several clinical implications raised by these data. A clearer understanding is required of which patients may benefit from perioperative sympatholysis. Identifying highly phenotyped patients at the highest perioperative risk of excess sympathetic activation could provide a new rationale for targeted sympatholysis, rather than a 'one-size-fits-all' approach which does not appear to have an acceptable therapeutic risk-benefit ratio.²⁻³ Our data are consistent with recent experimental rodent data identifying off-target risks of β -blockade following perioperative anaemia.⁴⁴ The subpopulation of patients we have identified who exhibit high sympathetic activity to stress, frequently driven by perioperative factors including acute blood loss and/or hypovolaemia, may have an increased risk for vital organ hypoxia and injury if sympatholysis was implemented given their established cardiac dysfunction. Certainly, sympatholysis in these

patients could play an important role in perioperative stroke, particularly given the importance of avoiding hypotension.⁴⁵ Taken together, these studies suggest that in addition to the need for further trials,⁴⁶ a mechanistic re-evaluation of the appropriate clinical indications and timing for perioperative sympatholysis is necessary to mitigate the detrimental effects of β -blockade and α -2 agonism identified by serial POISE trials.

In summary, we have identified a significant number of patients who exhibit cardiovascular changes associated with excess sympathoadrenal activity in the preoperative setting. These patients develop exercise-induced, ECG-defined ischaemia and sustain prolonged hospital stay. This subset of patients may benefit from interventions designed to counteract the multiorgan, deleterious impact of excessive sympathetic activity and/or inappropriately targeted sympatholysis on cellular function.

Author affiliations

¹Division of Medicine, Department of Clinical Physiology, University College London, London, UK

²UCL Medical School, University College London, London, UK

³Division of Surgery and Interventional Science, University College London, Royal Free Hospital, London, UK

⁴Department of Anaesthesia, University College London Hospitals NHS Trust, London, UK

⁵Plymouth University, Peninsula Schools of Medicine and Dentistry, Plymouth, London, UK

⁶Department of Neuroscience, Physiology and Pharmacology, Centre for Cardiovascular and Metabolic Neuroscience, University College London, London, UK

⁷William Harvey Research Institute, Queen Mary University of London, London, UK

Contributors GLA contributed to study hypothesis, design and data analysis. JW, AN and JMO contributed to design, data collection and data analysis. RS, DSM, GM, JRS and RCMS contributed to CPET data collection and data analysis.

Funding This project was funded in part by the Academy of Medical Sciences/Health Foundation Clinician Scientist scheme, and *British Journal of Anaesthesia*/Royal College of Anaesthetists Career Development Basic Science

Fellowship award (GLA); National Institute for Health Research Central and East London Clinical Research Network; *British Journal of Anaesthesia*/Royal College of Anaesthetists John Snow Intercolated BSc award (AN); HCA International Perioperative Medicine Fellowship (JW); Plymouth Hospitals NHS Trust. This work was undertaken at University College London Hospitals NHS Trust/University College London who received a proportion of funding from the Department of Health UK NIHR Biomedical Research Centre funding scheme.

Competing interests None declared.

Ethics approval MREC: 11/H0805/58.

Provenance and peer review Not commissioned; externally peer reviewed.

Data sharing statement Data available on request—enquiries to: g.ackland@ucl.ac.uk.

Open Access This is an Open Access article distributed in accordance with the terms of the Creative Commons Attribution (CC BY 4.0) license, which permits others to distribute, remix, adapt and build upon this work, for commercial use, provided the original work is properly cited. See: <http://creativecommons.org/licenses/by/4.0/>

REFERENCES

1. Botto F, Alonso-Coello P, Chan MT, *et al.* Myocardial injury after noncardiac surgery: a large, international, prospective cohort study establishing diagnostic criteria, characteristics, predictors, and 30-day outcomes. *Anesthesiology* 2014;120:564–78.
2. Devereaux PJ, Yang H, Yusuf S, *et al.* Effects of extended-release metoprolol succinate in patients undergoing non-cardiac surgery (POISE trial): a randomised controlled trial. *Lancet* 2008;371:1839–47.
3. Devereaux PJ, Sessler DI, Leslie K, *et al.* Clonidine in patients undergoing noncardiac surgery. *N Engl J Med* 2014;370:1504–13.
4. London MJ. Quo vadis, perioperative beta blockade? Are you "POISE'd" on the brink? *Anesth Analg* 2008;106:1025–30.
5. Fleisher LA, Poldermans D. Perioperative beta blockade: where do we go from here? *Lancet* 2008;371:1813–14.
6. Sear JW, Giles JW, Howard-Alpe G, *et al.* Perioperative beta-blockade, 2008: what does POISE tell us, and was our earlier caution justified? *Br J Anaesth* 2008;101:135–8.
7. Bouri S, Shun-Shin MJ, Cole GD, *et al.* Meta-analysis of secure randomised controlled trials of β -blockade to prevent perioperative death in non-cardiac surgery. *Heart* 2014;100:456–64.
8. Sarabi M, Lind L. Mental stress opposes endothelium-dependent vasodilation in young healthy individuals. *Vasc Med* 2001;6:3–7.
9. Barnes SJ, Ackland GL. Beta-adrenoreceptor modulation of metabolic, endocrine and immunologic function during critical illness. *Endocr Metab Immune Disord Drug Targets* 2010;10:292–300.
10. Yeung AC, Vekshtein VI, Krantz DS, *et al.* The effect of atherosclerosis on the vasomotor response of coronary arteries to mental stress. *N Engl J Med* 1991;325:1551–6.
11. Ghiadoni L, Donald AE, Cropley M, *et al.* Mental stress induces transient endothelial dysfunction in humans. *Circulation* 2000;102:2473–8.
12. Deanfield JE, Shea M, Kensett M, *et al.* Silent myocardial ischaemia due to mental stress. *Lancet* 1984;2:1001–5.
13. Rozanski A, Bairey CN, Krantz DS, *et al.* Mental stress and the induction of silent myocardial ischaemia in patients with coronary artery disease. *N Engl J Med* 1988;318:1005–12.
14. Ramachandruni S, Fillingim RB, McGorray SP, *et al.* Mental stress provokes ischaemia in coronary artery disease subjects without exercise- or adenosine-induced ischaemia. *J Am Coll Cardiol* 2006;47:987–91.
15. Jouven X, Schwartz PJ, Escolano S, *et al.* Excessive heart rate increase during mild mental stress in preparation for exercise predicts sudden death in the general population. *Eur Heart J* 2009;30:1703–10.
16. American Thoracic Society; American College of Chest Physicians. ATS/ACCP Statement on cardiopulmonary exercise testing. *Am J Respir Crit Care Med* 2003;167:211–77.
17. London MJ, Hollenberg M, Wong MG, *et al.* Intraoperative myocardial ischaemia: localization by continuous 12-lead electrocardiography. *Anesthesiology* 1988;69:232–41.
18. Fihn SD, Gardin JM, Abrams J, *et al.* 2012 ACCF/AHA/ACP/AATS/PCNA/SCAI/STS Guideline for the diagnosis and management of patients with stable ischemic heart disease: a report of the American College of Cardiology Foundation/American Heart Association Task Force on Practice Guidelines, and the American College of Physicians, American Association for Thoracic Surgery, Preventive Cardiovascular Nurses Association, Society for Cardiovascular Angiography and Interventions, and Society of Thoracic Surgeons. *J Am Coll Cardiol* 2012;60:e44–164.
19. Rywik TM, O'Connor FC, Gittings NS, *et al.* Role of nondiagnostic exercise-induced ST-segment abnormalities in predicting future coronary events in asymptomatic volunteers. *Circulation* 2002;106:2787–92.
20. Kliffeld P, Lauer MS. Exercise electrocardiogram testing: beyond the ST segment. *Circulation* 2006;114:2070–82.
21. Snowden CP, Prentis JM, Anderson HL, *et al.* Submaximal cardiopulmonary exercise testing predicts complications and hospital length of stay in patients undergoing major elective surgery. *Ann Surg* 2010;251:535–41.
22. Colson M, Baglin J, Bolsin S, *et al.* Cardiopulmonary exercise testing predicts 5 yr survival after major surgery. *Br J Anaesth* 2012;109:735–41.
23. Hartley RA, Pichel AC, Grant SW, *et al.* Preoperative cardiopulmonary exercise testing and risk of early mortality following abdominal aortic aneurysm repair. *Br J Surg* 2012;99:1539–46.
24. Hennis PJ, Meale PM, Hurst RA, *et al.* Cardiopulmonary exercise testing predicts postoperative outcome in patients undergoing gastric bypass surgery. *Br J Anaesth* 2012;109:566–71.
25. Lai CW, Minto G, Challand CP, *et al.* Patients' inability to perform a preoperative cardiopulmonary exercise test or demonstrate an anaerobic threshold is associated with inferior outcomes after major colorectal surgery. *Br J Anaesth* 2013;111:607–11.
26. Struthers R, Erasmus P, Holmes K, *et al.* Assessing fitness for surgery: a comparison of questionnaire, incremental shuttle walk, and cardiopulmonary exercise testing in general surgical patients. *Br J Anaesth* 2008;101:774–80.
27. Beaver WL, Wasserman K, Whipp BJ. A new method for detecting anaerobic threshold by gas exchange. *J Appl Physiol (1985)* 1986;60:2020–7.
28. Pina IL, Balady GJ, Hanson P, *et al.* Guidelines for clinical exercise testing laboratories. A statement for healthcare professionals from the Committee on Exercise and Cardiac Rehabilitation, American Heart Association. *Circulation* 1995;91:912–21.
29. Hansen JE, Sue DY, Wasserman K. Predicted values for clinical exercise testing. *Am Rev Respir Dis* 1984;129:S49–55.
30. Uth N, Sorensen H, Overgaard K, *et al.* Estimation of VO₂max from the ratio between HRmax and HRrest—the Heart Rate Ratio Method. *Eur J Appl Physiol* 2004;91:111–15.
31. Whipp BJ, Higgenbotham MB, Cobb FC. Estimating exercise stroke volume from asymptotic oxygen pulse in humans. *J Appl Physiol (1985)* 1996;81:2674–9.
32. Oelberg DA, Kacmarek RM, Pappagianopoulos PP, *et al.* Ventilatory and cardiovascular responses to inspired He-O₂ during exercise in chronic obstructive pulmonary disease. *Am J Respir Crit Care Med* 1998;158:1876–82.
33. Ackland GL, Iqbal S, Paredes LG, *et al.* Individualised oxygen delivery targeted haemodynamic therapy in high-risk surgical patients: a multicentre, randomised, double-blind, controlled, mechanistic trial. *Lancet Respir Med* 2015;3:33–41.
34. Gan TJ, Soppitt A, Maroof M, *et al.* Goal-directed intraoperative fluid administration reduces length of hospital stay after major surgery. *Anesthesiology* 2002;97:820–6.
35. Ackland GL, Yao ST, Rudiger A, *et al.* Cardioprotection, attenuated systemic inflammation, and survival benefit of beta1-adrenoreceptor blockade in severe sepsis in rats. *Crit Care Med* 2010;38:388–94.
36. Flierl MA, Rittirsch D, Nadeau BA, *et al.* Phagocyte-derived catecholamines enhance acute inflammatory injury. *Nature* 2007;449:721–5.
37. Freestone PP, Haigh RD, Lyte M. Catecholamine inotrope resuscitation of antibiotic-damaged staphylococci and its blockade by specific receptor antagonists. *J Infect Dis* 2008;197:1044–52.
38. Lyte M, Freestone PP, Neal CP, *et al.* Stimulation of Staphylococcus epidermidis growth and biofilm formation by catecholamine inotropes. *Lancet* 2003;361:130–5.
39. Mills PJ, Karnik RS, Dillon E. L-selectin expression affects T-cell circulation following isoproterenol infusion in humans. *Brain Behav Immun* 1997;11:333–42.
40. Hara MR, Kovacs JJ, Whalen EJ, *et al.* A stress response pathway regulates DNA damage through beta2-adrenoreceptors and beta-arrestin-1. *Nature* 2011;477:349–53.
41. Kruger K, Lechtermann A, Fobker M, *et al.* Exercise-induced redistribution of T lymphocytes is regulated by adrenergic mechanisms. *Brain Behav Immun* 2008;22:324–38.

42. Reich DL, Bennett-Guerrero E, Bodian CA, *et al*. Intraoperative tachycardia and hypertension are independently associated with adverse outcome in noncardiac surgery of long duration. *Anesth Analg* 2002;95:273–7.
43. Nagele P, Liggett SB. Genetic variation, β -blockers, and perioperative myocardial infarction. *Anesthesiology* 2011;115:1316–27.
44. Ragoonanan TE, Beattie WS, Mazer CD, *et al*. Metoprolol reduces cerebral tissue oxygen tension after acute hemodilution in rats. *Anesthesiology* 2009;111:988–1000.
45. Donovan AL, Flexman AM, Gelb AW. Blood pressure management in stroke. *Curr Opin Anaesthesiol* 2012;25:516–22.
46. Wijesundera DN, Duncan D, Nkonde-Price C, *et al*. Perioperative beta blockade in noncardiac surgery: a systematic review for the 2014 ACC/AHA guideline on perioperative cardiovascular evaluation and management of patients undergoing noncardiac surgery: a report of the American College of Cardiology/American Heart Association Task Force on Practice Guidelines. *J Am Coll Cardiol* 2014;64:2406.